

# Cambridge



# Crystal Ball

ISSUE NO. 37

MAY 1976

Published monthly by the NATIONAL CAMBRIDGE COLLECTORS, Inc.  
To encourage and to report the discovery of the elegant and boundless product  
of the Cambridge Glass Company, Cambridge, Ohio

An Invitation from your President - - - -

To the Third Annual National Cambridge Collectors Convention to be held June 25, 26, and 27 at Cambridge, Ohio.

This Convention is being held during the same time period as the first club sponsored Antique Show and Sale so that you may have the benefit of a complete weekend of Cambridge Glass.

Our Convention Headquarters will be at the same location as the Antique Show so that you will have minimal running to do. This location is at the Guernsey Catholic Central High School, which is located on State Route 209 South of Cambridge. It is just one mile South of Interstate 70 and two miles West of Interstate 77.

The Convention meals and meetings will be held at the Cambridge Country Club which is located just one mile south of the school and is also on State Route 209.

With most of the available motels being located near the I-70 and S. R. 209 interchange at Cambridge, this will make all of our activities very close together. We have made the attempt to provide you with maximum convenience so that you will all have more time to enjoy the activities and the companionship of your fellow club members.

Feel free to invite a friend or so to accompany you to the functions. They may learn to like it and become members also.

It will be your attendance that will make this convention the total success that it should be. Here's hoping that we will see you there.

MEMBERSHIP RENEWAL NOTICE  
If the date on your address label is - - - **5-76**  
This is your last issue of the Crystal Ball!  
RENEW NOW!! Don't miss a single issue.

*Bice*

CAMBRIDGE CRYSTAL BALL

P. O. Box #416  
Cambridge, Ohio 43725

NATIONAL CAMBRIDGE COLLECTORS, INC.

1975-76 Officers & Committee Chairpersons

PRESIDENT - - - - - William C. Smith  
VICE-PRESIDENT - - - - - Charles Upton  
SECRETARY - - - - - Janice Hughes  
TREASURER - - - - - David G. McFadden

BUDGET & FINANCE - - - - William C. Smith  
BY-LAWS - - - - - David G. McFadden  
CONVENTION - - - - - William C. Smith  
MEMBERSHIP - - - - - David Hardesty  
MUSEUM - - - - - Edward Ruby  
PROGRAM & ENTERTAINMENT - - - Evelyn Allen  
PUBLICITY - - - - - Frank Wollenhaupt  
STUDY GROUP ADVISORY - - - David B. Rankin

1976 ANTIQUE SHOW - - - - - Evelyn Allen  
1976 CAMBRIDGE AUCTION - - - Lynn Welker  
CRYSTAL BALL Editor - - - Phyllis D. Smith

CLASSIFIED ADVERTISING RATES

5¢ per word \$1.00 minimum

We cannot mix type size in classified advertisements. Abbreviations and initials will count as words. Payment in full must accompany all ads.

DISPLAY ADVERTISING RATES

	Members	Non-Members
1/8 page - - - - -	\$ 4.00 - - -	\$ 6.00
1/4 page - - - - -	7.00 - - -	10.00
1/2 page - - - - -	12.00 - - -	18.00
3/4 page - - - - -	17.00 - - -	25.00
Full page - - - - -	22.00 - - -	33.00

DEALERS DIRECTORY

1" ad - - - - - \$6.00 for 6 months

Advertising copy must be in our hands by the 15th of each month to assure publication in our next issue. Advertisements containing reproductions will not knowingly be accepted unless clearly stated.

CAMBRIDGE CRYSTAL BALL assumes no responsibility for items advertised and will not be responsible for errors in price, description or other information.

Back issues of the CRYSTAL BALL are available to members only at a cost of 60¢ each or 12 issues for \$7.00.

Please address all correspondence to:

NATIONAL CAMBRIDGE COLLECTORS, INC.  
P. O. Box #416  
Cambridge, Ohio - 43725

PLEASE NOTIFY US IMMEDIATELY OF ANY CHANGE IN YOUR ADDRESS!

PLEASE enclose a Self-Addressed, Stamped Envelope when requesting information.

# QUESTIONS & ANSWERS

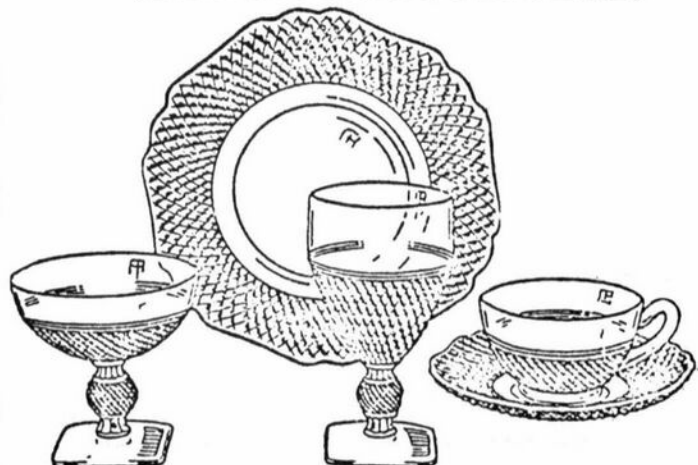
by Frank Wollenhaupt

? I recently ran across a brass Chandelier with a Cambridge, Chantilly pattern, base and the bobèche was in Rosepoint pattern. The base appears to have been made specifically for that Chandelier. Can someone in the club enlighten me? J. U., Rockaway, N.J.

**ANSWER:** I have never seen Cambridge glass used in a brass Chandelier, however, I certainly believe that it is possible. This was probably a special order item - naturally another company produced the brass fittings for the Chandelier.

I have seen bobèches etched in Rosepoint and other etchings. It is my understanding that the globe could be bought separately. It could be that the brass or lamp company ordered their globes and bobèches ground a certain way for their use. Can any of the other members help with this question?

**NOTE OF INTEREST:** Recently one of our members found a Statuesque Line cocktail with Ebony bowl and foot and Crystal nude. Most unusual!!!



# SALES OPPORTUNITY FOR MEMBERS

Do you have a few items of Cambridge glass or Antiques that you would like to sell, but not enough for a booth of your own??? If so, we have the answer for you.

The National Club has taken a booth at the Antique Show sponsored by N. C. C., and members will be permitted to consign items for sale, subject to the following rules:

1. List of items to be consigned must be received by our Secretary no later than June 15. This list should indicate your "asking" and "will take" prices.
2. There will be a limit of 15 consigned items, per member. (All items are subject to rejection by Committee.)
3. All items must be clean and ready for display. Price tags attached, etc.
4. Please indicate when your items will reach the Show. The Committee requests they have all items by 2 P.M., June 25th. However, they will accept items on June 26th, from out of town members not arriving till then.
5. Unsold items must be removed from the booth by consignee no later than 7 P. M., June 27th. Unless prior arrangements are made, any unclaimed items will be donated to the Auction.
6. N.C.C. will not be responsible for breakage or theft of your merchandise. However, reasonable care will be exercised to prevent this.
7. A 10% Commission will be charged on all items sold.

continued -----

Consignees and other members are encouraged to volunteer their services in the operation of this booth for short periods of time during the three days of the Show. Please do your part!!

For any additional information regarding this booth, please write to: Secretary, N. C. C., P.O. Box 416, Cambridge, Ohio 43725.

## notes from your EDITOR!

Busy days ahead - sometimes I wonder what to do first. Most women are thinking about Spring Cleaning. Not me, I just try to find time to keep up with the weekly dust and dirt!

If you receive this a little late this month, I hope you will forgive us. Bill and I have both been "under the weather" - me with Flu and Bill with unexpected surgery. Needless to say, our volunteer activities were brought to a halt for several days. However, we are now on the mend. Bill's reports were all good and he is back to work, and I only have a little cough left. So it's back to N.C.C. and all those fun filled days ahead.

The Convention is shaping up and looks like it will be a good one. Seems like everybody is coming - from California, Georgia, Texas, New York - and if you aren't - you will be sorry!

Our Catalogue Reprint and Price Guide will be ready by Convention if things continue as they are now. Keep your fingers crossed!

Be sure to return your Ballots and Reservation form as soon as possible so our Committees can complete their final plans.

# ..... 1976

# NOMINEES FOR

tionally and to help strengthen the National club.



RETTIG --- McFADDEN -- COYLE  
LANDMAN ---- ISAACS

Your Nominating Committee presents for your consideration, the following Resume of each of the nominees seeking to be elected to your Board of Directors for the next four years. They are listed alphabetically for your convenience.

Please follow the instructions on the Ballot(s) enclosed with this issue of the CRYSTAL BALL, in casting your vote.

- - - - -

ROBERT COYLE: Bob lives in Newark, Ohio. He is an interior designer and an antique dealer. He is a founding member of N. C. C., past president, has served as chairman of a past convention, has contributed articles to the CRYSTAL BALL and has served on other committees at various times. He is a past president of the Land of Heisey Society and has served on the National Accreditation Board of the American Institute of Interior Designers. Bob has been interested in Cambridge glass for ten years and would like to do his part to help promote Cambridge glass na-

DORIS ISAACS: Doris lives in Cambridge, Ohio, is married and the mother of three children. She is a housewife, does volunteer work at Guernsey Memorial Hospital gift shop, and operates Heritage Antiques in her home. She became a member of N.C.C. in 1974 and is a member of the Cambridge Squares study group. Doris has been interested in Cambridge glass since 1972 when she received a set of dark green Mt.Vernon dinnerware as a Christmas gift. She has had both board and committee experience with several service organizations and vows to fulfill her commitment if she is elected.

RUBY LANDMAN: Ruby lives in Ashland, Ohio, with her husband. She became a member of N.C.C. in 1973, faithfully attends Quarterly meetings and wishes there were a study group in her area which she could join. Ruby has been interested in Cambridge glass for five years and she is interested in the success of N. C. C. and would like to contribute as much time as possible toward its success.

DAVID McFADDEN: Dave lives in Galena, Ohio, with his wife. He is the Vice-President of a commercial heating and air-conditioning co. and an antique dealer. He became a member of N. C. C. in 1973, and was later appointed to serve the remainder of the unexpired board term of Ruth Forsythe. He is currently serving as treasurer of N.C.C. and chairman of the Constitution and By-Laws committee. Dave is a member of the Hokey-Pokey study group and he writes the "Is It Cambridge" column for the CRYSTAL BALL. ---  
continued on next page ---

# BOARD .....

TAL BALL. He has been interested in Cambridge glass for five years and would like to continue his work on the board in an effort to do his part to help the N.C.C.

**JACK RETTIG:** Jack is married and lives in Gahanna, Ohio. He is an electrical engineer who serves as a development group Supervisor at Bell Telephone Laboratories and he and his wife are antique dealers. Jack has been a member of N. C. C. since 1973, and writes the "Touch of History" column for the CRYSTAL BALL. He served on the Display committee for the Convention in 1975, the Nominating committee for the 1975 elections and is currently serving on the Program committee. He has been interested in Cambridge glass for four years, wants to see N. C. C. become the best and most noted glass collectors club ever, and would like to do his part to continue to enhance the image of the club.

## DISPLAY ROOM

Once again we are calling upon our members to help us fill our Display Room. If you have any rare or unusual pieces of Cambridge glass, please allow us to display them for others to see and enjoy.

The Committee must have a complete description and value of each item no later than June 10th, so arrangements can be made for Insurance. The Display will be guarded at all times.

We also need volunteers to man the Booth during Show hours. Please do your part to help out.

Send Display information to: Convention Chairman, N.C.C., P.O. Box 416, Cambridge, Ohio 43725. THANKS

# BOOKS FOR SALE

National Cambridge Collectors, Inc. is proud to announce that you can now order all of the available reference books on Cambridge glass directly from the Club.

Address your orders for any of the following to:  
BOOKS

National Cambridge Collectors, Inc.  
P. O. Box 416  
Cambridge, Ohio 43725

\*\*\*\*\*

"THE CAMBRIDGE GLASS BOOK"  
by Harold and Judy Bennett  
(96 pgs. with 59 color plates)  
Paperback \$8.95 Hardbound \$9.95

\*\*\*\*\*

"1975 PRICE GUIDE TO THE CAMBRIDGE GLASS BOOK"  
by Charles and Mary Alice Upton  
(Prices for each item in Bennett book) \$1.75

\*\*\*\*\*

"CAMBRIDGE, OHIO GLASS in COLOR"  
by Mary, Lyle and Lynn Welker  
(15 color plates w/ description and notes) \$5.95

\*\*\*\*\*

"CAMBRIDGE GLASS CO."  
by Mary, Lyle and Lynn Welker  
(120 pgs. of reprints from 8 old catalogs) \$6.95

\*\*\*\*\*

"CAMBRIDGE, OHIO GLASS in COLOR II"  
by Mary, Lyle and Lynn Welker  
(15 color plates w/ description and notes) \$5.95

\*\*\*\*\*

"CAMBRIDGE GLASS CO. BOOK II"  
by Mary, Lyle and Lynn Welker  
(119 pgs. of reprints from old catalogs) \$6.95

\*\*\*\*\*

"1903 CAMBRIDGE GLASS CO. CATALOG REPRINT"  
by Harold and Judy Bennett  
(106 page reprint of original catalog) \$7.50

\*\*\*\*\*

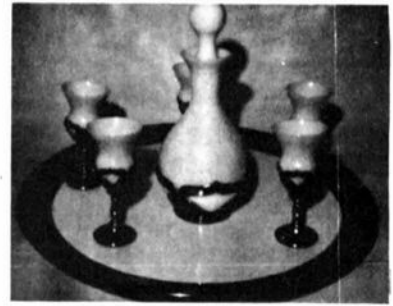
For release on June 25, 1976 (Hopefully)  
"1930 - 1934 CAMBRIDGE GLASS CO. CATALOG REPRINT"  
by National Cambridge Collectors, Inc.  
(250 page reprint of original catalog)  
Hardbound with Price Guide \$12.95

\*\*\*\*\*

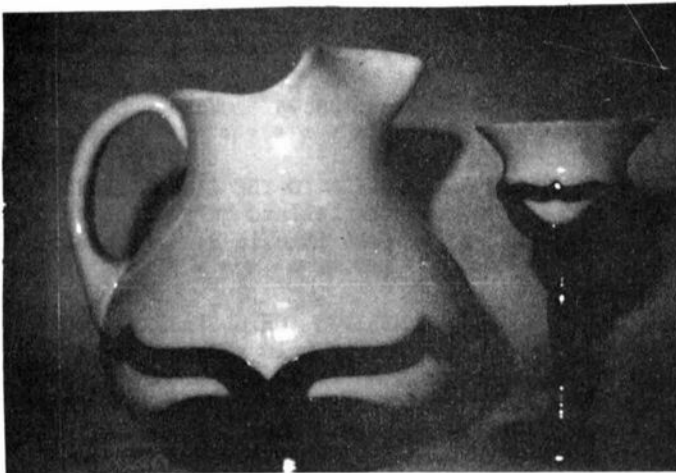
OHIO RESIDENTS ADD 4½% SALES TAX

# Gwen's Glassline by gwen shumpert

(Photos by Billy Shumpert)



*A beautiful set - milk glass in gold Farber ware holders (marked). The tray is white with gold border; decanter is 8 1/2" including ground stopper. Cordials are 4".*



*Milk glass No. 3400 line 80 oz. ball pitcher and 3 oz. milkglass cocktail. Both have gold Farberware holders - marked.*



*This set is the same as the milkglass except for colors: Forrest green/clear ground stopper decanter, green cordial inserts - all in chrome Farberware (marked)-chrome tray.*

## CAMBRIDGE GLASS/FARBERWARE HOLDERS

When I first started collecting Cambridge glass, I thought all pieces in chrome holders marked Farber Bros. were Cambridge - but not so - and since there is not much information around on these items, I decided to show you some Cambridge/Farber this month.

First of all though, I want to thank the Board of Directors of the National Cambridge Collectors Club, Inc., Bill and Phyllis Smith and Harold Bennett for their help in "weeding out" the non-Cambridge items. All photographs shown here have been positively identified as Cambridge/Farber items



*Condiment set - amethyst no. 3400 line in chrome Farberware holders. Salt and pepper have chrome tops, vinegar and oil (only one shown) have clear, ground stoppers.*

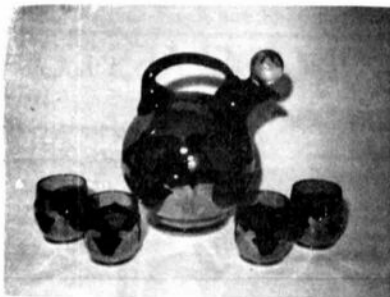
(Editors Note: The Cambridge CRYSTAL BALL wishes to express sincere thanks and appreciation to Barbara Shaeffer, Editor of the RAINBOW REVIEW GLASS JOURNAL (P.O.Box 2315, Costa Mesa, California 92626) for her permission to reprint this article by Gwen Shumpert. Gwen is a Contributing Editor to RAINBOW REVIEW GLASS JOURNAL and this article appeared in their April, 1976 issue. Since so little information is available on Cambridge Glass/Farberware Holders, we felt this article would be of particular interest to our members.)



Top: 4" cocktail, amber insert chrome holder marked Farber Bros N.Y.C. - Pat. No. 874961924011. There are 5 rings around the stem. Right: royal blue/clear handle cream pitcher, marked Farber Bros N.Y.C., chrome holder. Bottom: royal blue insert 5 1/2" dia. Farber chrome handled holder 7 1/2" wide including handles, marked.



This is the famous Cambridge nude found in so many different items. But this one is chrome - the base is marked Farber Bros. N.Y.C. The Cambridge glass insert can be found in various colors.



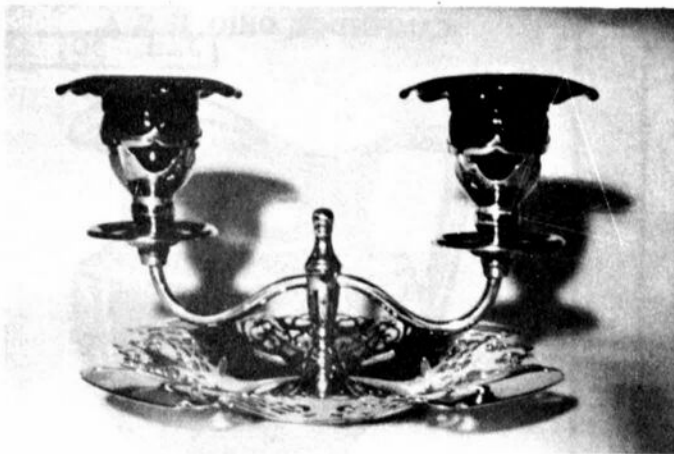
Line no. 3400 - 32 oz. amber jug/clear ground stopper; 2 1/2 oz. amber tumblers in chrome Farberware holders (marked).



Chrome tray, cocktail shaker with black Bakelite handle and holders on goblets, all marked Farber. Inserts etched "Chantilly". Note the different design of chrome holders even though patent no. is the same.



5 1/2" square green Honey dish No. 3500 Gadroon pattern. I have two of these - note the different finials. Lower one is wood and the other is metal, marked with an anvil sign "Wrought Farberware - Bklyn, N.Y."



Candleholder 4 1/2" tall and 7" diameter. This is my favorite Cambridge/Farber piece - the pierced chrome base is lovely and the liners are my favorite color CARMEN! Somehow I can't bring myself to burn candles in this gorgeous candleholder.

# TOUCH OF HISTORY

by Jack and Sue Rettig

The Cambridge ads from the front cover of the China, Glass & Lamps publications are continued showing a night water set, ice tea set, oval water jug and glass place card. In addition an announcement in the Jan. 17, 1927 issue describes new colors and shapes being added to the Cambridge line. This article dates the "Golden Showers" color and the color combinations of pink and green stemware.

## THE CAMBRIDGE GLASS CO.

CAMBRIDGE, OHIO, U. S. A.

March 21, 1927



A triumph in CAMBRIDGE Art Glass is this gold-encrusted Night Set composed of small, covered jug, oval tray and tumbler. Supplied in Amber-Glo, Peach-Blo or Emerald.

## THE CAMBRIDGE GLASS CO.

CAMBRIDGE, OHIO, U. S. A.

Aug. 30, 1926

No. 701 GLASS PLACE CARD



A novelty at a popular price which is bound to be popular and to replace the cardboard place cards on the tables of up-to-date hostesses. Center is etched for writing in name.

Illustration shows Decoration 160 with wreath border in gold. Decoration 160 shows wreath bordered by gold lines. Also furnished plain. Supplied in Amber-Glo, Emerald, Peach Blo, Blue Bell and Ivory. Place your order now.

NEW COLORS—CAMBRIDGE—NEW SHAPES

Jan. 17, 1927

New colors, new shapes, new decorations and new color combinations—these, in great array, are in the 1927 offerings of the Cambridge Glass Co., of Cambridge, Ohio. There is "Golden Showers" a new golden color in glass, true golden color. There are the new heavy silver decorations on colored glass, exquisite in their workmanship. The complete dinner service in glass with the striking cover dishes and the fetching stemware combination of pink bowls with light green foot and stem stand out also.

## THE CAMBRIDGE GLASS CO.

CAMBRIDGE, OHIO, U. S. A.

Feb. 13, 1928



In the attractive Amber-Glo, Emerald and Peach-Blo colors are Ice Tea and Refreshment Sets in a choice of styles in both jugs and tumblers with etchings or gold encrustations. The design shown is No. 91-9403 and the etching is No. 704.

## THE CAMBRIDGE GLASS CO.

CAMBRIDGE, OHIO, U. S. A.

Jan. 30, 1928



Really striking is this oval jug in Peach-Blo, Amber-Glo or Emerald transparent glass with gold encrusted band. A needed change from the customary round pitcher is this jug known as No. 935.



# Stems

by Frank & Vicki  
Wollenhaupt

The stem this month might be one of the more elusive stems that Cambridge made. The pattern number for this line is #3300.

This stem was patented by Mr. J.C. Kelly on September 17, 1929. (see figure #1)

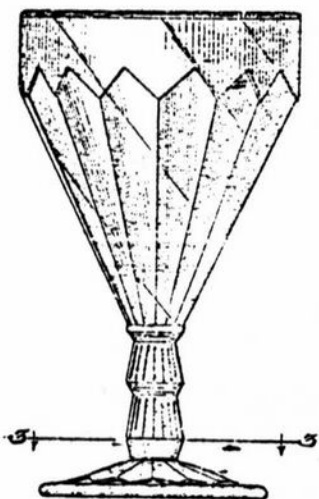


figure #1

The first and only reference for this stem (to date) has been found in the August 19, 1929, issue of "China, Glass and Lamps". --- (see figure #2)

The ad states that they made a regular 9 oz. table tumbler, an 8 oz. goblet, a tall sherbet and a footed 10 oz. soda goblet. The line could be had in the following transparent shades: Emerald, Maderia (golden amber), Peach-Blo, and Crystal. Since this line consisted mainly of tumblers and stemware, it might be possible that it was made strictly for hotels and restaurants.

THE CAMBRIDGE GLASS CO.  
CAMBRIDGE, OHIO, U. S. A.

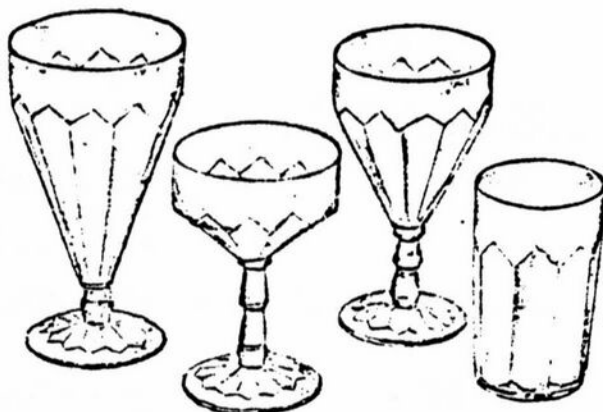


TABLE GLASSWARE

Utility in the modern manner is typified in the No. 3300 line of Cambridge glassware. The design is new and the several pieces make an attractive setting.

figure #2

This certainly is not one of Cambridge's more graceful stems, but it is an interesting one. Every item of this line that this writer has seen, has been signed.

Evidently this stem did not sell well, as it was patented in 1929, but is not mentioned in the 1930-1934 catalogue.

---

## — CAMBRIDGE AREA MOTELS —

EL RANCHO MOTEL, (AAA), 1 mi. W. of Cambridge on US RTS. 40 & 22 (32 units) 614-432-2373  
FAIRDALE MOTOR LODGE, (AAA), Exit #67 off IR-70, 4mi.E. on Rt. 22 (20 units) 614-432-2304  
HOLIDAY INN, Exit SR 209 off IR-70 614-432-7313  
KNIGHTS INN, Exit SR 209 off IR-70 614-432-6391  
RAMADA INN, Exit SR 209 off IR-70 614-432-5691  
SPIRIT OF 76 INNS, Exit SR 209 off IR-70 - 614-439-3581  
TRAVELODGE, Exit SR 209 off IR-70 614-432-7375

THIRD ANNUAL CONVENTION  
National Cambridge Collectors, Inc.

CAMBRIDGE, OHIO

June 25, 26, 27, 1976

SCHEDULE OF EVENTS

FRIDAY, June 25th

- 3:00 PM - 5:30 PM - REGISTRATION  
Guernsey Catholic Central High School  
S. R. 209 South, Cambridge, Ohio
- 6:00 PM - 9:00 PM - CAMBRIDGE '76 Antique Show & Sale PREVIEW  
Guernsey Catholic Central High School
- 9:30 PM - After Show "GET ACQUAINTED" Party  
Cambridge Country Club  
S. R. 209 South, Cambridge, Ohio  
Hosts: Bill and Phyllis Smith

SATURDAY, June 26th

- 8:00 AM -10:30 AM - REGISTRATION  
Cambridge Country Club
- 8:30 AM -10:30 AM - Continental BREAKFAST  
Cambridge Country Club  
"SHOW and TELL" - after breakfast
- 11:00 AM - 6:00 PM - CAMBRIDGE '76 Antique Show & Sale  
Guernsey Catholic Central High School
- Visit "Cambridge Glass" Display Room  
Special Displays by Study Clubs  
Opportunity to "visit" Cambridge, Ohio
- 6:45 PM - 7:30 PM - COCKTAIL HOUR - Cambridge Country Club
- 7:30 PM - N.C.C. Annual Convention BANQUET  
Cambridge Country Club  
(Roast Prime Rib of Beef)
- Guest Speaker - WILLIAM C. ORME  
Chemist for Cambridge Glass Co.  
Son of Wilbur Orme and Grandson  
of A. J. Bennett

SUNDAY, June 27th

- 9:00 AM - - Buffet BREAKFAST  
Cambridge Country Club  
N.C.C. Annual Business Meeting
- 12 Noon - 6:00 PM - CAMBRIDGE '76 Antique Show & Sale  
Guernsey Catholic Central High School

# STUDY Club News

## ----- HOKEY - POKEYS -----

The Hokey-Pokeys Study Club held their regular meeting March 21st, in the home of Dave and Sue Rankin of Englewood, Ohio. There were eight members present.

Led by our Host, Dave Rankin, our discussion centered on the Cambridge color "Blue". With the use of Blacklight, it was quite apparent that we still have much research to do, before we can put a correct name to each of the shades of Cambridge blue.

Our next meeting will be held on April 11th, in the home of Joy and Dave McFadden, Galena, Ohio. Topic to be "The Year 1927" and what was happening with Cambridge Glass back then.

## ----- CAMBRIDGE SQUARES -----

The Cambridge Squares Study Club held their regular meeting March 19th in the home of Frank and Lena Barnes, Cambridge, Ohio. There were seventeen members and two guests present. We welcomed Jean Powers of Senecaville and Josephine Barstow of Cambridge, Ohio, as new members.

A discussion was held on the program for the Convention. Everett Patterson and Larry Hughes will be in charge.

The program for the evening was led by Lena Barnes, assisted by John Wolfe. Their program topic was "Pitchers" and they had on display a total of 28 crystal and 20 colored ones.

"Show and Tell" items consisted of  
Continued -----

a NearCut, hand-painted Daisy pattern lamp, an engraved paperweight, a piece of Cambridge Art Pottery and a Crown Tuscan egg cup (?).

Judy Hardesty and Janice Hughes won prizes consisting of a Near Cut cup and saucer and a Near Cut nappy.

Refreshments were served by the Hostess. The next meeting will be held in the home of Roy and Doris Isaacs, Cambridge, Ohio. The topic will be "NearCut Patterns".

The Hokey-Pokeys and The Cambridge Squares are looking forward to meeting YOU at the Convention, June 25, 26 and 27. They are interested in helping you form a Study Club in your area. Stop by their Display and get acquainted!!

## Classified

**FOR SALE:** Twelve Rosepoint Sherbets, perfect. One new cruet. B. E. Brooks, 426 East Ave., Tallmadge, Ohio. Phone 216-633-3574

**WANTED:** Cambridge, ELAINE etching on tall Stem, Clear Crystal (ridges lengthwise in bowl). Need wines, liquors, sherbets. Mail photo or drawing to: Clara M. DeGross, 3916 Fairway Drive, Canfield, Ohio 44406.

**V I S I T FINDER'S KEEPER'S ANTIQUES**  
at the following shows

June 10, 11, 12, 13 -----  
Heisey Collectors of America  
ANTIQUÉ SHOW AND SALE  
Newark, Ohio

June 25, 26, 27 -----  
National Cambridge Collectors  
ANTIQUÉ SHOW AND SALE  
Cambridge, Ohio

We will be featuring Quality  
CAMBRIDGE GLASS


P.O.Box #303  
Dayton, Ohio  
45401

P.O.Box #16023  
Columbus, Ohio  
43216

# DEALERS



# DIRECTORY

<p>ANTIQUÉ ALLEY 24815 Broadway Bedford, Ohio - 44146 216-232-7739 Marie Spagnola CAMBRIDGE GLASS----ROYAL DOULTON</p>	<p>BLACK ROOSTER ANTIQUES 1018 Clark Street Cambridge, Ohio--43725 614-439-2549 ----- M. Sipe CAMBRIDGE GLASS - GENERAL LINE</p>	<p>COLLECTOR'S HAVEN 135 Cynthia Street Heath, Ohio -- 43055 614-522-1635 SPECIALIZING IN CAMBRIDGE GLASS</p>
<p>HOBBY HOUSE ANTIQUES Rt. #1, Cambridge, Ohio - 43725 614-432-6971 - Frank &amp; Lena TAKE RT.#209 W.FROM CAMBRIDGE TO RT.#658 - NORTH 1 1/2 MILES.</p>	<p>HAROLD AND JUDY'S ANTIQUE SHOP 437 North 8th Street Cambridge, Ohio -- 43725 614-432-3045-Open by Appointment SPECIALIZING IN CAMBRIDGE GLASS!</p>	<p>HERITAGE ANTIQUES Rt. #5, Cambridge, Ohio - 43725 614-439-3241 TAKE N.8th ST.RD.(County Rd.#33) TURN LEFT AT RAILROAD TRACK.</p>
<p>LEGEND INN  1225 W. Church St., Newark, Ohio 614-344-2136 43055 ----- Dine with us and see our CAMBRIDGE GLASS COLLECTION Open 4-11 PM Daily Closed Sunday and Holidays HAROLD &amp; MILDRED WILLEY, OWNERS</p>	<p>HOFFHAVEN ANTIQUES 21 Half Moon Lane Tarrytown, New York -- 10591 Mail-Shows-Phone -- 914-631-2140 CAMBRIDGE, Fosteria Rose In Snow</p>	<p>PRESIDENTIAL COIN &amp; ANTIQUE CO. 6222 Little River Turnpike Alexandria, Virginia - 22312 Gail B. Levine ---- 703-354-5454 WANT LISTS SOLICITED-OPEN 6 DAYS</p>
	<p>THIS 'N' THAT PLACE 101 South Street Chagrin Falls, Ohio -- 44022 Lue Koerper ----- 216-247-4928 OPEN THURS. to SAT. 10 AM - 5 PM</p>	<p>A. SPRINGBORN P. O. Box E. G. #962 Melbourne, Florida - 32935 305-254-7439 BUSINESS BY MAIL, SHOWS &amp; PHONE!</p>
<p>YOU CAN ADVERTISE YOUR ANTIQUE SHOP HERE 1 inch \$6.00 for 6 months</p>	<p>NATIONAL CAMBRIDGE COLLECTORS, Inc. P. O. Box 416 Cambridge, Ohio - 43725 Address Correction Requested</p>	
	<p>FIRST CLASS MAIL</p>	
	<p>-----</p>	
<p><u>DATES TO REMEMBER!!!</u> June 25, 26, 27, 1976 N.C.C. CONVENTION and FIRST ANTIQUE SHOW ----- August 21, 1976 ALL CAMBRIDGE GLASS AUCTION ----- MARK YOUR CALENDAR!</p>		