

Cambridge



Crystal Ball

ISSUE NO. 39

JULY 1976

Published monthly by the NATIONAL CAMBRIDGE COLLECTORS, Inc.
To encourage and to report the discovery of the elegant and boundless product
of the Cambridge Glass Company, Cambridge, Ohio

Thoughts from the President - - - -

It is with considerable personal satisfaction that we present our thoughts for this month.

We have just had the pleasure of completing a year in this office. A year that was initially accepted with some misgiving and trepidation. Were we capable? Could we recognize the needs? Could we work successfully with a group such as the club and the Board of Directors? Could we make the worth-while contribution that the office deserved? All were questions that created many anxieties. In retrospect these questions seem to have lost their ability to cause concern. All that it takes is the desire and WORK.

It has been a year of appraisal and honest effort by a group of people. People that have made every effort to work together for the good of the club. It has been a year of developing methods and assisting in the coordination of the efforts of many. Work much of the time, but enjoyable work that was advancing the cause of the club.

At the outset of the year, it was recognized that it would be necessary to establish a sound financial basis for the club. This was mandatory if we were ever to accomplish our purpose of establishing a museum. We are happy to report at this time that this effort has been successful. The year-end audit (found elsewhere in this issue) confirmed that we have indeed balanced our budget. It also revealed that we have com-

pletely erased our operating fund deficit. Our financial condition is "IN THE BLACK".

During the course of the year we made a few other advances. Our second annual Auction was a great boost to the Museum fund. The programs for our Quarterly meetings have been very enlightening and enjoyable. Our membership drop rate has been stabilized at a very low percentage. We are beginning to slowly increase our total membership. We have conceived, planned and executed our first club sponsored Antique Show and Sale. We have even entered the arena of publications with our 1930-1934 Catalog Reprint. Each of these advances have required WORK, but it has been the effort of many. All of those who have contributed to these advances can take pride in the accomplishments. Yes, as we look back on it, it has been a "Year of Progress".

As we look toward a second year, we feel a spirit of competition and try to form ideas that will prove to be even more beneficial than past efforts. What these will be is still a very large question mark. With the proven abilities that bless the club and with all of the still hidden talent that we must have, it would seem that there is no limit to the beneficial possibilities.

The general attitude that seemed to prevail through-out the convention was one of encouragement. Encouragement toward bigger and better things. Each participant seemed to echo one thought. That 1976-77 will be the "Year of Growth".

Bill

CAMBRIDGE CRYSTAL BALL

P. O. Box #416
Cambridge, Ohio 43725

STUDY Club News

Official publication of National Cambridge Collectors, Inc., a non-profit Corporation with tax exempt status. Published once a month for the benefit of its members. Membership is available for individual members at \$10 per year and additional members (12 years of age and residing in the same household) at \$3 ea. All members have voting rights, but only one CRYSTAL BALL will be mailed per household.

Back issues of the CRYSTAL BALL are available to members only, at a cost of 60¢ each or 12 issues for \$7.

1975-76 Officers & Committee Chairpersons

PRESIDENT ----- William C. Smith
VICE-PRESIDENT ----- Charles Upton
SECRETARY ----- Janice Hughes
TREASURER ----- David G. McFadden

BUDGET & FINANCE ----- William C. Smith
BY-LAWS ----- David G. McFadden
CONVENTION ----- William C. Smith
MEMBERSHIP ----- David Hardesty
MUSEUM ----- Edward Ruby
PROGRAM & ENTERTAINMENT ----- Evelyn Allen
PUBLICITY ----- Frank Wollenhaupt
STUDY GROUP ADVISORY ----- David B. Rankin

1976 ANTIQUE SHOW ----- Evelyn Allen
1976 CAMBRIDGE AUCTION ----- Lynn Welker

CRYSTAL BALL Editor ----- Phyllis D. Smith

CLASSIFIED ADVERTISING RATES

5¢ per word \$1.00 minimum

We cannot mix type size in classified advertisements. Abbreviations and initials will count as words. Payment in full must accompany all ads.

DISPLAY ADVERTISING RATES

	Members	Non-Members
1/8 page -----	\$ 4.00 - - -	\$ 6.00
1/4 page -----	7.00 - - -	10.00
1/2 page -----	12.00 - - -	18.00
3/4 page -----	17.00 - - -	25.00
Full page -----	22.00 - - -	33.00

DEALERS DIRECTORY

1" ad ----- \$6.00 for 6 months

Cambridge CRYSTAL BALL assumes no responsibility for items advertised and will not be responsible for errors in price, description, or other information.

Advertising copy must be in our hands by the 15th of each month to assure publication in our next issue. Advertisements containing reproductions will not knowingly be accepted unless clearly stated.

Please address all correspondence to:

Cambridge CRYSTAL BALL
National Cambridge Collectors, Inc.
P. O. Box #416
Cambridge, Ohio 43725

PLEASE NOTIFY US IMMEDIATELY OF ANY CHANGE
IN YOUR ADDRESS!

PLEASE enclose a Self-Addressed, Stamped
Envelope when requesting information.

- - H O K E Y - P O K E Y S - -

The Hokey-Pokey Study Group met at the Wollenhaupt home on Sunday, May 16, 1976. In our effort to learn more about Cambridge glass, we have researched information from various trade journals, and each month we are selecting a year and discussing it at our meeting. The year for this discussion was 1932.

Did you know that in 1932, "Chintz" could be found on deep blue glass, encrusted with small figures in gold or silver? Candelabrum with prisms retailed for about \$15 per pair in the stores? A full line of Martha Washington was available in crystal, amber, royal blue, forest green, ruby, heatherbloom and gold krystol and that the sweet potato vase was available in forest green, ruby, amethyst and royal blue?

Did you know also, that in 1932 the Imperial Hunt Etching on the new Tally Ho patented line was made in a complete line ranging from the 18 oz. goblet to the 1 oz. cordial and also in fancy tableware and novelty pieces in a range of Cambridge colors as well as crystal and the "Crown Tuscan" line has been received with much interest since its recent announcement.

Reported by Joy McFadden

- C A M B R I D G E S Q U A R E S -

The Cambridge Squares did not meet during the month of May. Their next meeting will be held in the home of Charles and Mary Alice Upton - time to be announced later.

DEADLINE NOTICE

Due to vacation schedules, all advertisements and copy for the September issue of the CRYSTAL BALL, must be in our hands on or before AUGUST 10, 1976!!

SEE YOU AT THE AUCTION!

SMITH RE-ELECTED

Your Board of Directors met Sunday morning, June 27th and unanimously re-elected William C. Smith President for the coming year 1976-77.

Janice Hughes was also re-elected to the office of Secretary, as was David McFadden re-elected to the office of Treasurer. McFadden was also elected to fill the office of Vice-President.

Jack Rettig, Gahanna, Ohio, was welcomed as a new member of the Board of Directors, having been elected to fill the vacancy left by outgoing Board member Ed Ruby.

The Thanks of the Board of Directors was extended to Ed Ruby who leaves the Board this month after serving as a member since the inception of N.C.C. in 1973. Ed will be greatly missed.

President Smith said that Committee Chairpersons for the coming year will be announced at a later date.

Door Prize Auctioned

Mr. J. P. Martin from Blairsville, Pa., was the winner of the Door Prize at our Annual Meeting.

He quickly turned the prize (a lovely centerpiece of flowers) over to our President to be Auctioned to the highest bidder.

Lively bidding occurred and Zee Lopes of Benicia, Calif. was high bidder at \$15. Instead of \$15 she donated \$20 to the Club and returned the flowers to be used on our Registration table for the balance of the Convention.

The Club THANKS goes to both of these generous members.

Auction Notice

The Third Annual All Cambridge Glass Auction sponsored by National Cambridge Collectors, Inc. will be held:

AUGUST 21, 1976
(Saturday)

Starting at 11 AM

Guernsey Catholic Central
High School

Route #209 South

Cambridge, Ohio

Auction Chairman Lynn Welker informs us that no more consignments can be taken for this sale. A list of all items to be sold will be mailed to all N.C.C. members in the very near future.

Food will be available by the Catholic School Mothers.

Make your plans now to attend. All proceeds benefit the Museum Fund.

Auctioneers for this Auction will be Col. Max D. Cater & Dale Snode.

STUDY GROUPS NEEDED !

If you are interested in forming a Study Club in your area, please write to: N.C.C., P.O. Box #416, Cambridge, Ohio 43725, for complete information.

Study Clubs are a necessary part of this organization.

Don't put it off - write today!

Sorry to be so late this month but we wanted to bring you the Convention news!

National Cambridge Collectors, Inc.
Statement of Operating Income and Expenses
For the Years Ended March 31, 1976 and 1975

	<u>March 31,</u> 1976	<u>March 31,</u> 1975
Income:		
Prorated membership dues	\$ 2,631.69	\$ 2,206.99
Advertising	526.60	233.90
Sales of back issues of Crystal Ball	195.90	4.80
Other	311.90	151.88
Total income	<u>3,666.09</u>	<u>2,597.57</u>
Expenses:		
Advertising	28.00	119.66
Office supplies	99.45	239.34
Postage and box rental	544.88	323.18
Printing Crystal Ball	1,705.92	2,328.30
Other	47.20	120.70
Total expenses	<u>2,425.45</u>	<u>3,131.18</u>
Net operating income (loss)	1,240.64	(533.61)
Beginning Operating Fund Balance (deficit)	<u>(1,161.72)</u>	<u>(628.11)</u>
Ending Operating Fund Balance (deficit)	<u>\$ 78.92</u>	<u>\$(1,161.72)</u>

National Cambridge Collectors, Inc.
Statement of Museum Fund Income and Expenses
For the Years Ended March 31, 1976 and 1975

	<u>March 31,</u> 1976	<u>March 31,</u> 1975
All Cambridge Glass Auction:		
Gross receipts	\$10,297.00	\$ 6,153.00
Total expenses	<u>9,301.61</u>	<u>5,513.20</u>
Income from auction	995.39	639.80
Donations	575.14	60.00
Interest	<u>86.00</u>	<u>-</u>
Net income to museum fund	1,656.53	699.80
Beginning Museum Fund Balance	<u>699.80</u>	<u>-</u>
Ending Museum Fund Balance	<u>\$ 2,356.33</u>	<u>\$ 699.80</u>

National Cambridge Collectors, Inc.
Comparative Balance Sheets
At March 31, 1976 and 1975

	March 31, 1976	March 31, 1975
Assets		
Cash:		
Operating funds	\$ 1,290.98	\$ 341.46
Invested	2,805.48	699.80
	4,096.46	1,041.26
Receivables	4.24	36.75
Other assets	305.45	47.73
Total assets	\$ 4,406.15	\$ 1,125.74
Liabilities and Members' Equity		
Accounts payable	\$ 7.90	\$ 650.32
Deferred membership dues	1,572.50	937.34
Other deferred income	390.50	-
Total liabilities	1,970.90	1,587.66
Members' Equity:		
Operating fund (deficit)	78.92	(1,161.72)
Museum fund	2,356.33	699.80
Total members' equity	2,435.25	(461.92)
Total liabilities and members' equity	\$ 4,406.15	\$ 1,125.74

QUESTIONS & ANSWERS

by Frank Wollenhaupt

What about the Tomato pieces shown on Plate 25 in Bennetts book and Plate 11 in Welkers book? Is it really Cambridge? T. R. Utah

ANSWER: From all the information that I have at this time, I will have to say No, it is not.

There are three reasons why I say this and they are as follows:

First - Mr. Bennett gives us a date of production from 1925-35. You would think that in those ten years Cambridge must have made "Tomato" in hundreds of different molds. If you really think about it you will only come up with ten or so different items and a lot of these could have been made from

the same mold. Out of these ten different items, none match any Cambridge glass shapes that I have seen.

Second - If this was an experimental color, we would have found it in the same shapes that the other experimental colors have been found in and surely some of the pieces would have been signed.

Third - In "Colored Glassware of the Depression Era" by Hazel Marie Weatherman, page 49, we find "Co-Operative Flint Glass Co." of Beaver Falls, Pennsylvania. In the text of the narrative we find "In 1925 Sunset was offered. This effect was deep red in the center thinning into lighter shades of yellow toward edges." The story also includes a few pictures and one of them shows a candlestick that matches those shown in Mr. Bennetts book.

My answer is No, Cambridge did not make the Tomato glass you question.

TOUCH OF HISTORY

by Jack and Sue Rettig

CHINA, GLASS & LAMPS

A Striking Combination

November, 1930

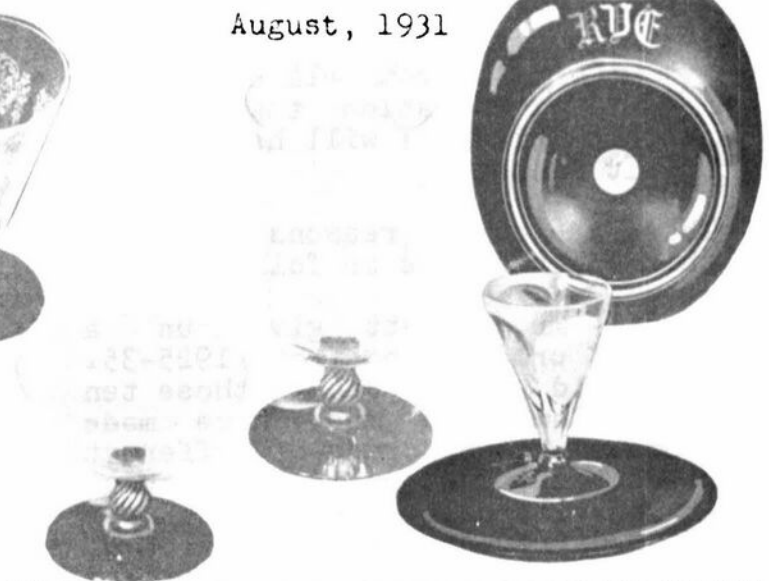
Crystal with Ebony Stem and Foot



May, 1930



August, 1931



ORIGINALITY



SATISFACTION

Book Is Delivered

Cambridge, Ohio; June 25th, 10:50 A. M.

True to his promise of delivery in time for our Convention, Mr. Bill Schroeder, of Collector Books, arrived in Cambridge this morning with 500 copies of our 1930-1934 Cambridge Glass Co. Catalog Reprint.

These books had been picked up at the bindery in Nashville, Tenn. only yesterday and by traveling all night, Mr. Schroeder was able to fulfill his commitment.

This 240 page book covering the entire production of the Cambridge Company from 1930 thru 1934 is literally a work of art. It is bound in a dark blue, linen covered, hard back with the Trademark and lettering gold embossed.



The photography and printing are of extremely fine quality. The clarity of the patterns is better than the original catalog.

Each of the more than 4700 items pictured in the book are listed in the accompanying Price Guide. This guide has been keyed to the colors that were most probably found in the general factory production during that period.

The introductory price for this important reference work is \$12.95 with Price Guide. The book carries a price of \$12.95 and the Price Guide \$2.00. Effective August First the full price of \$14.95 will be charged. (Ohio residents please add 4½% State Sales Tax) Dealer prices are available in quantity purchases. Please write for details on your business letterhead.

This book is truly a must for all novice as well as advanced collectors of Cambridge glass.

BOOKS FOR SALE

National Cambridge Collectors, Inc. is proud to announce that you can now order all of the available reference books on Cambridge glass directly from the Club.

Address your orders for any of the following to:
BOOKS

National Cambridge Collectors, Inc.
P. O. Box 416
Cambridge, Ohio 43725

"THE CAMBRIDGE GLASS BOOK"
by Harold and Judy Bennett
(96 pgs. with 59 color plates)
Paperback \$8.95 Hardbound \$9.95

"1975 PRICE GUIDE TO THE CAMBRIDGE GLASS BOOK"
by Charles and Mary Alice Upton
(Prices for each item in Bennett book) \$1.75

"CAMBRIDGE, OHIO GLASS in COLOR"
by Mary Lyle and Lynn Welker
(15 color plates w/ description and notes) \$5.95

"CAMBRIDGE GLASS CO."
by Mary, Lyle and Lynn Welker
(120 pgs. of reprints from 8 old catalogs) \$6.95

"CAMBRIDGE, OHIO GLASS in COLOR II"
by Mary, Lyle and Lynn Welker
(15 color plates w/ description and notes) \$5.95

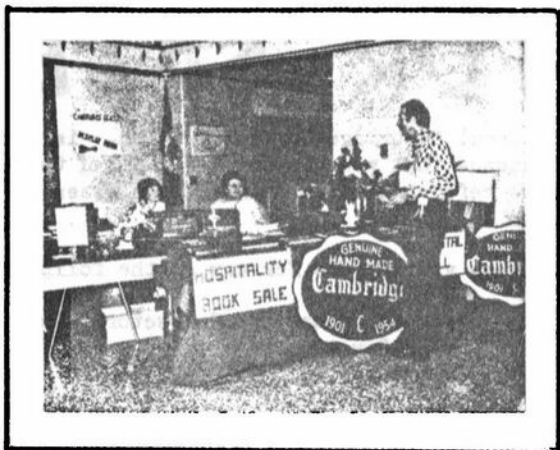
"CAMBRIDGE GLASS CO. BOOK II"
by Mary, Lyle and Lynn Welker
(119 pgs. of reprints from old catalogs) \$6.95

"1903 CAMBRIDGE GLASS CO. CATALOG REPRINT"
by Harold and Judy Bennett
(106 page reprint of original catalog) \$7.50

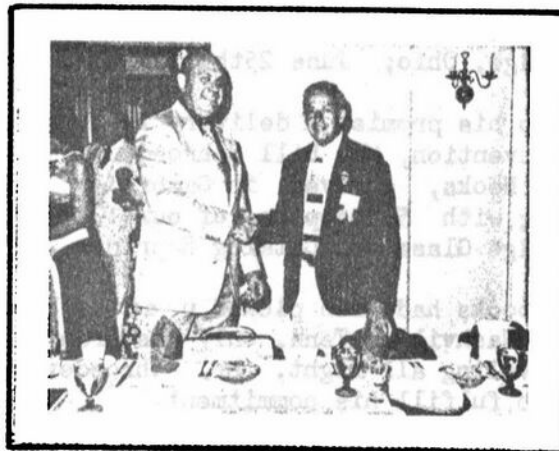
—Price Good Till August 1, 1976—
For release on June 25, 1976 (Hopefully)
"1930 - 1934 CAMBRIDGE GLASS CO. CATALOG REPRINT"
by National Cambridge Collectors, Inc.
(250 page reprint of original catalog)
Hardbound with Price Guide \$12.95

OHIO RESIDENTS ADD 4½% SALES TAX
After August 1st Price will be \$14.95

1976 CONVENTION



Greeting Robert Coyle, Newark, Ohio as he registers for the Convention was (L to R) Hospitality Chairman Marybelle Moorehead, Cambridge, Ohio, and CRYSTAL BALL Editor Phyllis Smith, Springfield, Ohio. Note our new 1930-34 Catalog standing on the table in front of Phyllis.



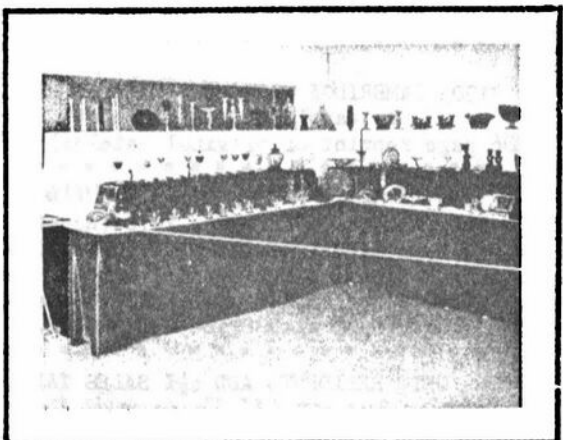
Our Convention Speaker Mr. William C. Orme (R) being welcomed home to Cambridge, by our President Bill Smith. Mr. Orme thrilled us by his talk and by bringing THE BIG X PITCHER for us to view. Some few of us were lucky enough to hold it - what a thrill!



Saturday morning at the Cambridge Country Club. The Continental Breakfast served at 8:30 AM, was well attended. We had folks in attendance from California to Massachusetts and Florida to Minn.



"Show and Tell" panel at the Saturday morning breakfast included (standing in doorway) Irene Rauck and George Hoffman from Newark, Ohio and David Rankin of Englewood, Ohio.



Our lovely Display Room at Guernsey Catholic High School was visited by many hundreds of Cambridge Glass admirers during the Convention weekend -- June 25, 26, 27, 1976.

HIGH LIGHTS

For the benefit of those of you who missed this years Convention and first Antique Show sponsored by National Cambridge Collectors, we offer this birds-eye-view of the happenings and hope you will be able to be with us next year. Next years date is already set -- June 24, 25, 26, 1977 -- so start making your plans NOW!

Things began to take shape on Thursday afternoon (June 24), at Guernsey Catholic High School when the tables arrived and Show Chairman Evelyn Allen urged her committee into action. By 6 PM Friday evening, the school gymnasium had, as if by magic, turned into an absolutely beautiful Antique Show.

Meanwhile things were stirring in the front hall of the school, with Admission, Registration and Book Sale tables being set up. In the Display Room, Chairman Steve Horner and his assistants Mildred and Harold Willey were busy getting the display of Cambridge glass ready for viewing.

Convention Chairman Bill Smith could be seen running several directions at once -- or so it seemed. By 10:30 AM Friday he was beginning to worry that our 1930-34 Catalog would not arrive in time for the Convention opening. At 10:50 AM, true to his promise, our publisher Bill Schroeder (Collector Books, Paducah, Ky.) and his printer David Long, arrived with 500 copies of the book.

The Hospitality Committee headed by Marybelle Moorehead of Cambridge, swung into action at 3PM when Registration opened. She was assisted by Phyllis Smith, Shirley Patterson, Ed and Mary Ruby, Joyce Clark, Meg and Bill Turner, Miss Mary Henderson and undoubtedly several others.

The aroma coming from the school cafeteria promised good things to eat and no one was disappointed. The women of the Church are excellent cooks as everyone can attest - especially the few who were lucky enough to get a piece of home-made Strawberry Pie!

The Antique Show opened its doors at 6 PM to a long line of eager customers from all over our country. From all reports, our first Show was a huge success. Over one third of our membership was in attendance from at least sixteen states. Some from as far away as California, Washington and Connecticut.

When the Show closed Friday evening, everyone was invited to the Cambridge Country Club for a Get Acquainted Party hosted by our President and his wife, Bill and Phyllis Smith. Besides having plenty to eat, we were entertained by a local group of singers called "The Land Of Lakes Singers". The purpose of the party was to help everyone get acquainted and it seems everyone did just that. Our newly elected members to our Board of Directors were announced and they are: Robert Coyle, David McFadden and Jack Rettig.

Saturday morning bright and early we all met at the Country Club for a Continental Breakfast and a session of "Show and Tell". The panel consisted of three persons well known for their knowledge of glass. They were Irene Rauck from Newark, Ohio, well known for her knowledge of Heisey glass as well as others; George Hoffman, Newark, Ohio, known for his knowledge of all types of glass; and David Rankin, Englewood, Ohio, known for his knowledge of Cambridge glass. It was a most enlightening session.

Both Saturday and Sunday afternoon our two Study Clubs presented programs at the school for the enlightenment and entertainment of our members and guests. Larry Hughes and Everett Patterson of the Cambridge Squares conducted a Clinic on "How To Recognize A Cambridge Swan". They had borrowed a swan mold from Tom Mosser of Mosser Glass Co., and showed just how a swan was made. They also explained the differences between Cambridge and Mosser swans. The Hokey-Pokey's ran the movie "The Crystal Lady" several times for everyone to enjoy. The film was shown by its owner Frank Wollenhaupt.

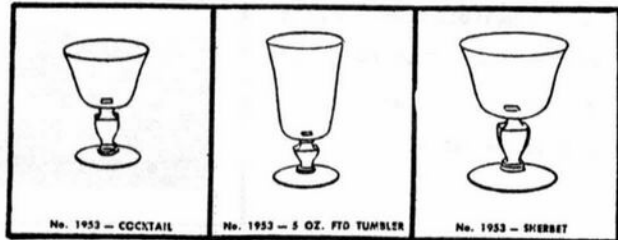
Saturday evening our Annual Banquet was held at the Cambridge Country Club. The meal was absolutely delicious and more than most could eat. The service was excellent and the atmosphere was lovely. The tables were tastefully decorated by Mary and Ed Ruby, following the Bicentennial theme. Red, White and Blue Mosser birds (from the old Cambridge mold) were used as table favors and beautiful flowers in Cambridge vases adorned each table.

Our guest speaker was Mr. William C. Orme from Chagrin Falls, Ohio. He entertained us with a most informative talk followed by a question and answer session. Mr. Orme worked at Cambridge Glass for just two years, but being the son of Wilber L. Orme and the grandson of Arthur J. Bennett, he was able to offer us an insight into what it was like growing up in the Cambridge Glass Company. It was a rare treat for all of us. He is the inventor of the formula for Cambridge Milk Glass and the designer of the #1953 stem shown below. He and two of his daughters toured our Antique Show Saturday afternoon and he was quite pleased and surprised to see a piece of his stemware for sale in one of the booths.

Sunday morning brought us once again to the Cambridge Country Club for the last session of our Convention -- our Annual Business Meeting. The Board of Directors met earlier and held their election of officers. Officers for the coming 1976-77 year are listed elsewhere in this publication.

David Rankin made the happy announcement that our Club is now operating in the BLACK and we are financially in great shape. He and his wife Sue donate their time as Auditors for the Club. We owe them a great deal of THANKS for all the time and work they have donated to this Club during the past year.

President Smith dismissed us with the thought that we have only bigger and better things to look forward to in 1976-77 and he said he expects this to be our big "YEAR OF GROWTH". Let's all see what we can do to help him make this come true!



WILLIAM C. ORME'S "CLAIM TO FAME"

CAMBRIDGE '76 ANTIQUE SHOW

Our 1976 Antique Show - Sale was a huge success according to the several hundred persons who were in attendance. Prizes were awarded the three most outstanding booths carrying out the Show theme in their decor. Judges were Attorney Russell Booth of Cambridge and Father Maloney of Belle Valley, Ohio.

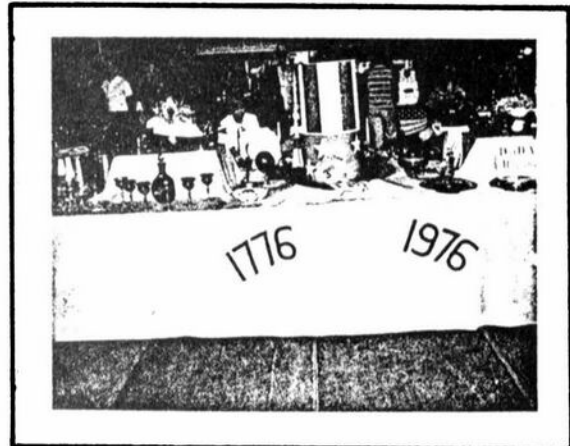


FIRST PRIZE
Robert Coyle - Newark, Ohio

Much hard WORK was involved in making our first Antique Show-Sale the success that it turned into. Show Chairman Evelyn Allen and her Committee consisting of Janice Hughes, David Hardesty, Robert Coyle and Lynn Welker all deserve a great deal of praise for a job well done! We are all looking forward to next year.

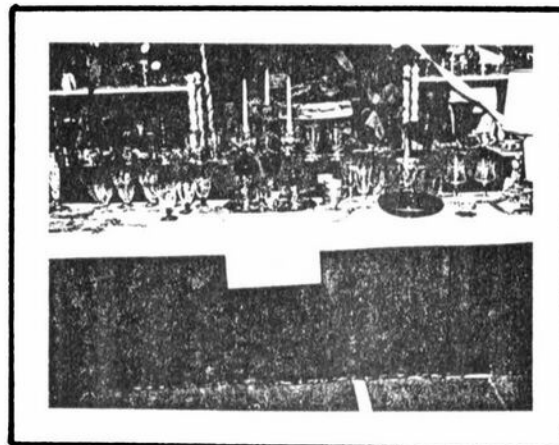


SECOND PRIZE
Finder's Keeper's Antiques -- Galena, Ohio



THIRD PRIZE
D and D Antiques -- Reynoldsburg, Ohio

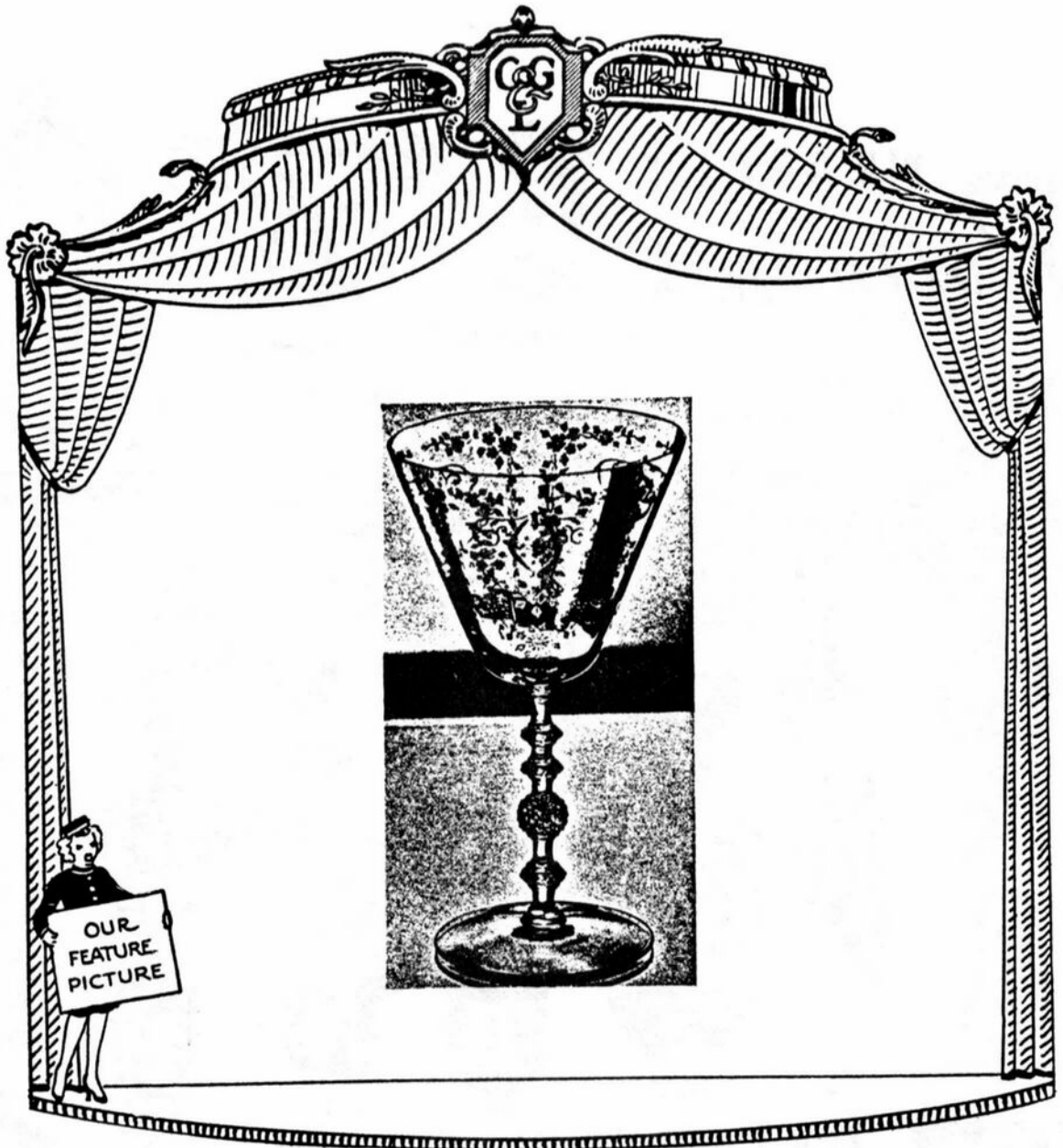
The Prize Ribbons were all beautifully hand-made by Evelyn Allen and were eagerly sought after by the Exhibitors. First Prize winner Robert Coyle generously donated his \$25 prize to N.C.C.



N.C.C. CLUB BOOTH

It was a beautiful Show for which the Exhibitors are to be congratulated. Each Booth was a lovely picture. We are just sorry we cannot show you a photo of each one. Our THANKS to each of you!

Photos courtesy of Everett Patterson



We Present For October

This has never been shown before. An exquisite glass line of domestic manufacture made in full stemware, flatware and dinnerware. The new shape has a fancy pressed stem on which patent is applied for. The decoration shows a floral relief grouped around a medallion. The line is made in crystal and a range of colors. For information address CHINA, GLASS AND LAMPS at either 104 Fifth Avenue, New York, or 650 Century Building, Pittsburgh.

Shown above is the way the Diane etching on the #3122 stemware was first presented to the public in the October, 1931 issue of China, Glass and Lamps.

NEARCUT Patterns



No. 358
12 oz. Tumbler
Ice Tea



No. 358
9, 10 and 12 inch
Dishes

TRADE
"Nearcut"
MARK



No. 121. Cracker Jar and Cover

by Phyllis Smith

Our NearCut Pattern this month is another very lovely, but fairly plain pattern. It is No. 2630 Plymouth Pattern.



No. 1. Butter and Cover.



No. 423
8 inch Vase
Taper

Plymouth is very similar in design to the later No. 2750 Colonial and No. 2800 Community Patterns. But, a little time spent studying the Plymouth design should quickly set it apart in your mind.



No. 327
8 inch Pickle Tray
No. 98
10 inch Celery Tray



No. 712
5 inch Jelly and Cover
Footed



No. 128
6 oz. Custard
Handled



No. 399
2 oz.
Wine



No. 391
4 1/2 oz. Sherbet
Footed



No. 392
3 1/2 oz. Sherbet
Footed



No. 75
5 inch Candle Stick



No. 97
Celery
Tray



No. 384
13 oz. Syrup
Nickel Top

It is entirely possible that the Plymouth and Colonial patterns were at some time absorbed into the Community Line, but this is just pure speculation on the part of this writer.



No. 41
Basket, Squat
Handled



No. 326
Pickle Jar and Cover



No. 378
Sugar Shaker, Nickel Top



No. 248
4 1/2, 5, 6, 7, 8, 9 inch
Nappies



No. 8
Spoon



No. 1
Cream



No. 1
Sugar and Cover
Small



No. 1
Sugar and Cover
Large



No. 55
7 1/2, 8 1/2 and 9 1/2 inch Bowls
Footed



No. 296
5 1/2 and 7 1/2 oz.
Oils

We have seen very few pieces of Plymouth. Our collection contains the #423 Vase and a #125 handled Custard. We have also seen a tapered quart size Tankard (not shown here). All of these pieces were marked and in Crystal.



No. 415
9 oz.
Table Tumbler

NO. 2630. PLYMOUTH PATTERN



No. 271
6 1/2, 7 1/2, 8 1/2 and 9 1/2 inch
Nappies



No. 288
5, 6, 7 and 8 inch
Nut Bowls



No. 248
4 1/2, 5, 6, 7, 8, 9 inch
Nappies



No. 56
7 1/2, 8 1/2 and 9 1/2 inch Bowls
Footed



No. 215
3/4 Gal. Jug
Tankard

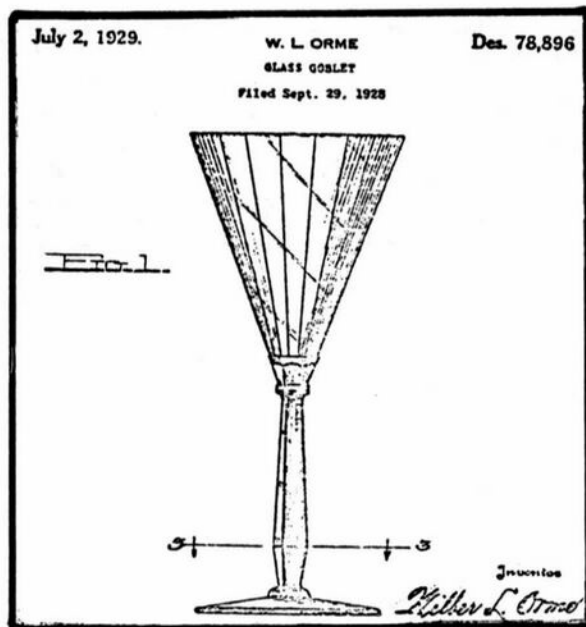
(References: Welker Reprint II, page 96 shows #2750 Colonial Design and Welker Reprint I, page 107 shows #2800 Community Pattern.)

Stems

by Frank and Vicki Wollenhaupt

This months stem is another of our odd ones. I didn't think much about it until I saw one recently at a Show. The one I saw had a Topaz bowl with a Willow Blue (light blue) stem. Boy was it pretty! A little less money and I would have added it to my collection.

Mr. Wilber L. Orme was granted design patent #78,896 on July 2, 1929 for a Glass Goblet. (Fig.#1)



The first appearance of this stem was in the April 1930 issue of "China, Glass and Lamps". It is shown with an optic Crystal bowl and an Ebony stem and foot. The stem is shown on a water goblet, a cocktail and a wine. In May 1930 this stem is shown again. This time as Line #3115.

In the 1930-34 Catalog Reprint, on pages 13, 82 and D, we find listed the following items with the #731, #742 and Cleo etchings on them. A 9 oz. goblet, 3½ oz. cocktail, 6 oz. tall sherbet and 5 oz., 8oz. 10 oz. and 12 oz. ftd. tumblers.

In the 1940 Catalog we can find no listing for this stem. Looks like the production time was something under ten years.



3115 Stemware Plate Etched "742"

FOR SALE

* * R A R E * *

CROWN TUSCAN TABLE LAMP

Height: 23" to top of harp

Base: 10½" tall

"Portia" Etching in Gold

\$500.00

REFERENCE: Welker Color
Book II, Plate 2, #1
and #2


Postage and Insurance Included
SASE Please

RUTH EILENFELD
5602 Hersholt
Lakewood, Ca. 90712
213-867-0652

DEALERS



DIRECTORY

<p>ANTIQUÉ ALLEY 24815 Broadway Bedford, Ohio - 44146 216-232-7739 ---- Marie Spagnola CAMBRIDGE GLASS ROYAL DOULTON</p>	<p>BLACK ROOSTER ANTIQUES 1018 Clark Street Cambridge, Ohio--43725 614-439-2549 ----- M. Sipe CAMBRIDGE GLASS - GENERAL LINE</p>	<p>COLLECTOR'S HAVEN 135 Cynthia Street Heath, Ohio -- 43055 614-522-1635 SPECIALIZING IN CAMBRIDGE GLASS</p>
<p>D'MARIE'S ANTIQUES Rt. #1, c/o Eastern Antique Mart. Thornburg, Virginia--22565 703-582-5859 ----- Jim Rankin OPEN DAILY - EXCEPT MONDAY</p>	<p>HAROLD AND JUDY'S ANTIQUE SHOP 437 North 8th Street Cambridge, Ohio -- 43725 614-432-3045-Open by Appointment SPECIALIZING IN CAMBRIDGE GLASS!</p>	<p>HERITAGE ANTIQUES Rt. #5, Cambridge, Ohio - 43725 614-439-3241 TAKE N.8th St.Rd.(County Rd.#33) TURN LEFT AT RAILROAD TRACK.</p>
<p>HOBBY HOUSE ANTIQUES Rt. #1, Cambridge, Ohio - 43725 614-432-6971 - Frank & Lena TAKE RT.#209 W.FROM CAMBRIDGE TO RT.#658 - NORTH 1½ MILES.</p>	<p>HOFFHAVEN ANTIQUES 21 Half Moon Lane Tarrytown, New York -- 10591 Mail-Shows-Phone -- 914-631-2140 CAMBRIDGE, Fosteria Rose In Snow</p>	<p>MARGARET LANE ANTIQUES 2 E. Main Street New Concord, Ohio--43762 Lynn Welker ----- 614-826-4418 CAMBRIDGE GLASS MATCHING SERVICE</p>
<p>LEGEND INN  1225 W. Church St., Newark, Ohio 614-344-2136 43055 ----- Dine with us and see our CAMBRIDGE GLASS COLLECTION Open 4-11 PM Daily Closed Sunday and Holidays HAROLD & MILDRED WILLEY, OWNERS</p>	<p>PRESIDENTIAL COIN & ANTIQUE CO. 6222 Little River Turnpike Alexandria, Virginia - 22312 Gail B. Levine ---- 703-354-5454 WANT LISTS SOLICITED-OPEN 6 DAYS</p>	<p>PAUL AND GINNY HENDERSON 1072 Green Street Iselin, New Jersey 08830 Open by Appointment-201-283-3181 SPECIALIZING IN CAMBRIDGE GLASS!</p>
<p>WILMA SAXTON P.O.Box 43, Berlin, N.J. 08009 CAMBRIDGE-HEISEY-ROYAL DOULTON SHOWS & MAIL ORDER--609-767-1470 Or Call TOLL FREE 800-257-8161</p>	<p>NATIONAL CAMBRIDGE COLLECTORS, Inc. Post Office Box #416 Cambridge, Ohio - 43725 Address Correction Requested</p>	
<p>GOLDSBERRY'S ANTIQUES 6336 H Ave. E. Kalamazoo, Michigan 49004 Ray and Jennie ---- 616-381-3013 SHOWS ONLY - CAMBRIDGE & HEISEY!</p>	<p style="text-align: center;">FIRST CLASS MAIL</p>	
<p>MARY & WILBUR HENDERSON 303 Guilford Avenue Woodsfield, Ohio 43793 SHOWS ONLY -- 614-472-1133 SPECIALIZING IN CAMBRIDGE GLASS!</p>		
<p>BLUE BELL ANTIQUES Route 19, Wexford, Pa. 15090 3 mi.S.Pa.Twp.Exit 3--Perry Hwy. OPEN: 10AM-5PM - FRI.& SUN.to 9PM AL AND MARY JANE MILLER</p>		
<p>ALL CAMBRIDGE GLASS AUCTION August 21, 1976 - 11 AM Guernsey Catholic Central Hi Sch.</p>	<p>MEMBERSHIP RENEWAL NOTICE If the date on your address label is --- 7-76 This is your last issue of the Crystal Ball! RENEW NOW!! Don't miss a single issue.</p>	

Reprinted 4-81

ADMISSION \$1 ea.

AUCTION

AUGUST 21, 1976

CONDITIONS OF SALE

Doors Open 9:30 AM

Sale Starts Promptly 11 AM

All glass guaranteed to be Cambridge. All pieces should be examined immediately and returned before five pieces are sold if the article is not perfect or as represented. Glass will be resold if time permits.

Terms: Check or cash at time of sale

Disputed bids will be opened only between the two bidders.

All sales are subject to Ohio and Gurensey Co. sales tax. 4½% sales tax will be charged. Dealers may sign an exemption form if the items being bought are for resale in which case tax will not be charged.

Mail bids will be taken. All bids must be accompanied by a check for the full amount. Bids will be executed secretly and bidder will pay only the final price not the full amount of the sealed bid. If you wish to have the piece shipped to you, please include adequate shipping and insurance. Please include a stamped, self-addressed envelope with all bids. You will be notified if you have bought the piece or your check will be returned and the selling price noted if you were unsuccessful in buying the piece. Ohio residents please include 4½% sales tax. All packages will be sent out the week following the auction. Please indicate how and when you would like to pick up the piece if you do not wish to have it shipped.

We have attempted to check all glass to be auctioned. There will be a few pieces with minor damage sold. These pieces are so indicated in the catalog.

We will not be responsible for accidents or glass after you have bought it. There will be adequate paper and boxes available at the auction.

Please bring this catalog to the auction.

For additional information: Phone 614-826-4418.

Auctioneers ----- Col. Max D. Cater and Dale Snode

Catalog terms: (G)-indicates piece is signed

(no.)-indicates number to be sold

Bennett's Cambridge Glass Book:	B.-Plate no.-Row no.-no.
N. C. C. Catalog Reprint:	N.-Page-item no.
Welker Color Book I	WI.-Plate no.-Row no.-no.
Welker Color Book II	WII.-Plate no.-Row no.-no.
Welker Catalog Reprint I	GI.-Page-item no.
Welker Catalog Reprint II	GII.-Page-item no.

This Auction will be held in the Gymnasium of the Guernsey Catholic Central High School, State Route 209 S., Cambridge, Ohio

DELICIOUS FOOD WILL BE AVAILABLE IN CAFETERIA

1. Moonlight Blue (4) & Mandarin Gold (4) 2½" seashell ashtrays in the original box
2. Royal Blue 5 oz. ftd. tumbler, 3122 crystal stem (7)
3. Crystal Everglades 14" crimped bowl, swan decor
4. Crystal Cascade #4000, no. 1-10 oz water goblet (5)
5. Royal Blue #1236-8" melon rib ivy ball, crys. stem
6. Willow Blue small sugar & creamer, CII,-94-1096 (C)
7. Carmen low sherbet on crystal 1066 stem & foot
8. Heliotrope lid for no. 87-1 lb. candy jar CI.-108
9. Willow Blue Decagon 11" center handled cookie tray
10. Peachblo #3300 sherbet, orig. sales tag & sticker
11. Crystal 12" ruffled bowl, 4-toed and 3-light candlestick, rock crystal engraved #656 N.-p.32-15 for cut
12. Crystal Seagull flower frog
13. Azurite 10" bowl, etch Laurel border B.-5-3-2
14. Crystal 10½" ring stem urn vase N.-32-11-no. 1305
15. Ebony Decagon 13" water tray, gold trim handles (C)
16. Mardi Gras 17" free form vase, bulbous base
17. Carmen Tally-Ho 10 oz. luncheon goblet(2) N.-32-33-1402/4
18. Crystal 4" Cambridge Square ashbowl, etched Vanadium Corporation of American
19. Forest Green liner in 2 handled Farber candy dish
20. Crystal tall goblet, Talisman Rose silk screen & gold
21. Crystal high sherbet or champagne, same as 20 (2)
22. Crystal 3400 Line 4 footed mayonnaise and liner
23. Crystal candlebase CI.-8-643
Crystal 2 holder candelabra arm for large vases
Crystal 7" arms vase
Crystal 8" arms vase (chip on edge)
24. Peachblo #3115 goblet, unknown cutting, crystal stem (6)
25. Peachblo #3115 champagnes, same decor (6)
26. Emer. Green (light) #3115 champagnes, same decor (5)
27. Dianthus Pink 11" flip bowl
28. Ebony 3½" early style swan (C)
29. Crystal Seashell small cigarette box and 3-2½" ashtrays
30. Willow Blue #3300 low sherbets (8)
31. Crown Tuscan large stemmed Nautilus shell flower center
32. Deep Blue Honeycomb 8½" comport, 5" high, engraved leaf border, rare color (C)
33. Crystal 5 oz. swan punch cups (5)
34. Forest Green s. & p. 2 cruetts in Farber, 1 stopper missing
35. Mandarin Gold 1066 low stem sherbet
36. Ivory 8½" candlestick like B.-20-4-2
37. Mulberry 10 oz. goblet, crys. 1066 stem & foot, orig. tag
38. Opaque (flesh color) Yardley creme jar, original lid
39. Amber ball jug salt and pepper
40. Azurite 11½" bowl, flared rim with gold encrusted border
41. Crys. candelabra, 2 arms, 3 nappies, lg. vase, Farber base
42. Ebony Scottie bookends, flat chip on top of ear of each
43. Azurite Community powder box & cover CI, 107, 235
44. Crystal Pristine small round salt & pepper (1 lid as is)
45. Forest Green Gadroon oval mint dish in Farber holder
46. Crystal tall footed water, Apple Blossom silk screen, gold
47. Crystal 2 handled candy, entirely gold encrusted floral
48. Amethyst 3400/92 ball jug decanter CI.-22
49. Amber Willow etching dinner plates, gold border (4)
50. Peachblo 13" center bowl, #732 etching N.-31-674

The following items are all crystal Mt. Vernon pattern. (51-59)

- 51. Square salt dips in original box, 6 have orig. tags
- 52. Square salt dip, orig. tag
- 53. Honey jar and cover, CI.-83-74.
- 54. #26 cocktails, 3½ oz. (4)
- 55. #1 goblets, 10 oz. (2)
- 56. #3-10 oz. footed tumbler (iced tea) (2)
- 57. #2-6½ oz. tall sherbet (2)
- 58. #8 large sugar and creamer
- 59. #9 covered candy urn, 8½" high, stemmed
- 60. Carmen Mt. Vernon sugar and creamer, #8 large
- 61. Royal Blue Mt. Vernon mug, applied crystal handle
- 62. Carmen Mt. Vernon mug, applied crystal handle
- 63. Crown Tuscan 11" bowl, 3400 Line, gold encrusted Chintz
- 64. Amethyst 12 oz. footed tumbler, 3126 crys. stem (5)
- 65. Mardi Gras sherbet, red flecks
- 66. Emer. Green (light) Mt. Vernon dolphin candlesticks
- 67. Royal Blue 9½"-#1233 vase, crys. ring stem (pair)
- 68. Crystal Asparagus plate (2)
- 69. Carmen cigarette urn on 3500/90 crys stem & ashtray foot
- 70. Amethyst liner in 7½" tall Farber Bros. comport base
- 71. Crystal 4½" swan (2)
- 72. Windsor Blue 2 light candlestick CI.-38-3400/64 (1 only)
- 73. Crystal 3400 Line 12" crimped shallow bowl, 4 toed
- 74. Crystal Seagull flower frog
- 75. Jade 6" high, 6½" across comport WII.-6-2-2
- 76. Amethyst ball jug salt & pepper, Farber Bros. holders
- 77. Forest Green 4 oz. cocktail in Farber Bros. stem holder
- 78. Peachblo Heirloom or Martha Washington 8" fan vase
- 79. Mardi Gras sherbet (white flecks)
- 80. Amber #3400 Line 80 oz. ball jug water pitcher, crys. handle
- 81. Heliotrope 7½" bowl, CI.-1-5-5, ebony base has been drilled
- 82. Crystal 32 oz. Ball jug decanter & 5-2½ oz. barrels

The following items are all crystal Near Cut. (83-97)

- 83. Ribbon (Checkerboard) 8½" bowl, 3½" high, signed
- 84. No. 2658 Toy mug, gold trim, enamel rose, etch Mayme 1932, CII.-111, signed
- 85. Feather wine _____
- 86. Feather milk pitcher, _____ signed.
- 87. Feather decanter, no stopper _____
- 88. Feather 7½" nappy, boat shaped, signed
- 89. Colonial #2750 basket, applied rope handle, signed
- 90. No. 4060½/415 tumbler, CI.-119.
- 91. Wheat Sheaf water pitcher & 6 tumblers (pit. 1 tumb. signed)
- 92. Wheat Sheaf 8" plate, signed (2)
- 93. Cut Wild Rose punch cup (4) 1 has original tag
- 94. No. 2693-8½" bowl, signed _____
- 95. Same, 6½", fluted
- 96. No. 2630 Child's sugar, creamer, butter, & spooner
- 97. No. 2660 Child's punch bowl & 3 cups
- 98. Inverted Thistle 4" berry bowl, signed
- 99. Emerald Green 9½" large bowl, gold decorated, signed
- 100. Emerald Green No. 2630 Child's sugar & creamer
- 101. Amethyst 5 oz. footed tumbler, crystal 3126 stem & foot
- 102. Ivory 10" stick vase, CI.-100-91
- 103. Royal Blue old fashioned tumblers in Farber holders (5)
- 104. Ebony 10½" ftd. cylinder vase, gold Laurel trim, inside chip
- 105. Forest Green 3400 ball jug cordial decanter, Farber holder
- 106. Carmen 10 oz. tall water goblet, 3500 crystal stem & foot
- 107. Crystal 8½" draped lady flower frog

107. Crystal 8" plate, blue encrusted Willow etching, rare
 108. Crown Tuscan 10" Seashell bowl, 3 feet, (C)
 109. Amber Bridge Glass holder, gold encrusted suits, edges
 110. Emer. Green (light) #138 sug/cr. with #520 etching
 111. Peachblo, Same, no etching, CI.-100
 112. Peachblo candy, (C) #3 12.00 113. Emer Gr. Same as 109
 114. Heatherbloom 3400 Line 8" plate, cup, & saucer, (C)
 115. Peachblo 8½" draped lady frog in rare 12" candlestick base
 116. Jade Twist candlestick, imperfection inside candle cup
 117. Crystal 12", 4 toed round bowl, rock crys, eng. Maryland
 118. Pistachio crackle shot glass
 119. Pistachio crackle old fashioned 17.50 120. Same, M. Gold
 121. Pistachio crackle 12 oz. tumb. 9.00 122. Same, Peachblo
 123. Emerald Green 3500 Line 3 section relish, Farber base
 124. Amethyst 3400/92 ball jug decanter, Farber base, stain
 125. Carmen high sherbet (champ.) on 3500 crystal stem, (4)
 126. Crown Tuscan cornucopia vase (2), WI,-2-4-2&3
 127. Amber Everglades console set, bubble in rim of bowl
 The following are all deep plate etchings on crystal. (128-145)
 128. Wildflower 3121 champagnes (6) (1 tiny edge nick)
 129. Same, tall goblet (3) # 1.00 130. Same, chip
 131. Same, 10 oz. ftd. (1) 4x7.00 132. Same, 12 oz. ftd. (4)
 133. Wildflower, gold encrusted, 6½" 2 div. relish, orig. tag
 134. Elaine 6" vase 8.00 135. Same, 10½" 3 div. relish
 136. Chantilly 3600 champagne 8.00 137. Same, 3779 claret
 138. Same 6" b. & b. plate 2.50 139. Same, Pristine mayo.
 140. Same, Pristine candy, 2 handles
 141. Diane 80 oz. ball jug water pitcher, gold trim spout, base
 142. Candlelight 12 oz. ftd. tumbler, 3111 stem
 143. Marjorie 3500/28-10" bowl & 2-3500/647 candlesticks
 144. Harvest, gold encrusted cocktail
 145. Wedgewood 1 lb. candy jar, CI.-108-86.
 146. Royal Blue 10 oz. tall goblets, crystal 3126 stem, (6)
 147. Same, tall sherbet or champagne (6)
 148. Rubina 6" high Honeycomb comport, B.-28-2-5
 149. Royal Blue 8" Statuesque Nude comport, crystal stem
 150. Opaque (flesh color) Yardley jar, 11-sided, orig. lid
 151. Amber #3400/113 decanter in Farber pedestal, stopper chip
 152. Amber 5 Oz. cocktail-liner in low Farber stem, (4)
 153. Emerald Green Cascade sugar, creamer, & tray
 154. Crystal Seashell 7" comport, sterling overlay shamrocks
 155. Emerald Green 5 oz. Georgian tumbler
 156. Royal Blue 9 oz. Georgian tumbler (2)
 157. Mandarin Gold 3½" swan, original tag
 158. Heatherbloom 12 oz. ftd. tumbler, 3122 crystal stem
 159. Heatherbloom 3126 champagne, Portia etch, crys. stem
 160. Amethyst (early) 10" console bowl (C) & 9½" candlesticks
 161. Crystal 6½" swan 22.50 162. Same, 8½" size
 163. Emerald Green Calla Lily candlestick (1 only) *Pi*
 164. Azurite Doric candlestick, minor base chip, CI.-100-65
 165. Crystal utility ware measuring cup (C), rare
 166. Emer. Green (light) Martha Washington comport & plate
 167. Emer. Green (light) sug/cr/tray, CII.-94-1096
 168. Peachblo, Same as 167 (these are Decagon)
 169. Heliotrope 9½" comport, gold encrusted border, CI.-106-56
 170. Forest Green 7" comport, crys ring stem, CI.-39-3400/28
 171. Azurite 7¾" across, deep bowl, CI.-105-4
 172. Amethyst insert in 5½" high Farber Bros. comport
 173. Crystal 3500 Line 2 handled candy or creme soup (2)

- _____ 174. Heliotrope pansy vase, shape as WI.-15-1-3
- _____ 175. Mocha (pale amber) mustard pot, Farber holder & lid
- _____ 176. Crystal Pristine #138 sugar & creamer
- _____ 176. Mardi Gras sherbet (red flecks)
- _____ 177. Mardi Gras 10 oz. ftd tumbler (blue flecks), orig. tag
- _____ 178. Emerald Green pencil dog _____ 179. Same, amber
- _____ 179. Royal Blue 3400 Line plates, (C), 8 $\frac{1}{2}$ "-(2), 7 $\frac{1}{2}$ "-(2)
- _____ 180. Mandarin Gold 3400 Line 3 division relish, (C)

The following are all crystal Caprice. (181-194)

- _____ 181. Salt & pepper, plastic lids _____ 182. #40 ind. sug/cr.
- _____ 183. 13" round deep bowl _____ 184. Low candlesticks, CI-5
- _____ 185. 3 section relish _____ 186. Same as 184, Alpine
- _____ 187. #200 goblets (2) _____ 188. Same, 5 oz. ftd. (5)
- _____ 189. #41 lg. sug/ cr. _____ 190. Tray for 189
- _____ 191. Small handled candy _____ 192. #41 large sugar only
- _____ 193. #38 med sug/cr. edge flaw on sugar
- _____ 194. Small dolphin foot cigarette box, minor corner chip

The following are all Moonlight Blue Caprice. (195-199)

- _____ 195. #40 ind. sug/cr. _____ 196. 4"-2 handled bonbon
- _____ 197. #200 goblets (2) _____ 198. #300 sherbet
- _____ 199. 13 $\frac{1}{2}$ " shallow bowl, Alpine finish, 4 ftd. minor edge chip
- _____ 200. LaRosa Pink Caprice 8 $\frac{1}{2}$ " plates (8)
- _____ 201. LaRosa Pink Caprice cups and saucers (8)
- _____ 202. Mocha Caprice #300 water goblets, crystal stem & foot (2)
- _____ 203. Amethyst 11 oz. goblet on 1066 crystal stem & foot (5)
- _____ 204. Royal Blue 10 oz. ftd. tumb., 1066 crys. stem & foot (8)
- _____ 205. Amber 3500 Line 2 division, 5 $\frac{1}{2}$ " round relish
- _____ 206. Forest Green 5", 2 handled candy, crimped edge
- _____ 207. Crystal Virginian 6" 2-lite candlesticks CI.-11-512, no
- _____ 208. Ebony Decagon 11" flip bowl, (C) _____ prisms
- _____ 209. Emer. Green (light) 8" plate, gold Imperial Hunt Scene (C)
- _____ 210. Ebony Seashell cig. box, orig. crystal flat lid, orig. tag
- _____ 211. Heliotrope Doric 8" plate, mint gold trim
- _____ 212. Crystal candelabra, 1-#628 base, #1562 arm, 3 peg nappies
- _____ 213. Amber 9 $\frac{3}{4}$ " comport, rare Willow etching all-over
- _____ 214. Jade 5 $\frac{1}{2}$ "-3 compartment covered candy box
- _____ 215. Amber #1215 creamer & sugar tray only, (C), edge rough
- _____ 216. Crystal candelabra arm, 2 hole for small vases
- _____ 217. Crystal candelabra arm, 2 hole for large vases
- _____ 218. Royal Blue #27-9 $\frac{1}{4}$ " belled vase (foot Royal Blue also)
- _____ 219. Carmen 3400 Line-6 $\frac{1}{2}$ " candy plate (ground off comport)
- _____ 220. Emerald Green (light) 15" flip bowl, etch Majestic, (C)
- _____ 221. Ebony 7" high X 7 $\frac{1}{2}$ " comport, CI-106-62
- _____ 222. Crystal Caprice 1st Year Cambridge Collector's Plate
- _____ 223. Amber overnight jug & cover, B.-29-1-5, no gold
- _____ 224. Amethyst 3400 Line ball decanter, 4-2 $\frac{1}{2}$ oz. barrels (1 nick)
- _____ 225. Crystal 3500/15 mini. sugar & creamer CII.-19
- _____ 226. Primrose 12" cylinder vase on stem, B.-6-1-5
- _____ 227. Jade mayo. comport, 6" across x 4 $\frac{1}{2}$ " high
- _____ 228. Amber sherbet on 1066 crystal stem & foot
- _____ 229. Royal Blue melon ribbed ivy ball on crystal ring stem
- _____ 230. Ebony Decagon ice bucket, entirely gold encrusted (C), rare
- _____ 231. Amber panelled powder jar, lid missing, (C)
- _____ 232. Crystal Pristine 10" round bowl, rare etch of Dragonflies
- _____ 233. Amber Gyro Optic barrel tumbler _____ and Waterlilies
- _____ 234. Carmen 12 oz. ftd. tumbler, 3790 crystal stem (Simplicity)
- _____ 235. Dianthus Pink 10" Geisha Girl figurine, screw into wooden
- _____ base, minor chip at bottom (no harm), very rare
- _____ 236. Heliotrope 8" Doric plate (this matches the Ram's Head)

The following items are all Rosepoint etched on crystal. (237-250)

- 237. 6" tall hurricane chimney only as on CI.-p. 21.
- 238. 3400 Line 11", 2 handled tray
- 239. Corinth Blank large 14½" torte plate
- 240. 3500 Line 8½" luncheon plate, scratched
- 241. 6¾" liner plate, has ring for mayo. or candy
- 242. 3400 Line 8½" luncheon plate (8)
- 243. 3121-12 oz. ftd. tumbler or iced tea (2)
- 244. 3121 high sherbet or champagne (4)
- 245. Same, 1 has chip, 1 has tiny crack, both-orig. tags
- 246. 3121-5 oz. footed tumbler (1)
- 247. 3500 low sherbet (3)
- 248. 3500 low sherbet (3) (chipped)
- 249. Corn dish or oblong pickle, minor nick on edge
- 250. Gold encrusted 2 division, 2 handle 6½" relish
- 251. Ruby 10 oz. goblet, 3111 crystal stem & foot
- 252. Crystal 2" dome top paperweight, etched Cambridge Glass Co., Old Home Week '21
- 253. Crystal Dresden Lady figure on ebony base (not drilled)
- 254. Crystal boullion cup and saucer, blue enamel encrusted Willow etching and gold trim, rare
- 255. Emer. Green (light) #138 sugar bowl, CII.-19.
- 256. Crystal Pristine miniature sugar & creamer
- 257. Amethyst 3400 Line ball salt & pepper in Farber holders
- 258. Crystal 3400 Line-7½" ring stem comport, rock crystal engraved #641, N.-p. 32-20 for cut.
- 259. Peachblo small sugar & creamer, (C) CII.-94-622 (2 sets)
- 260. Royal Blue candle cup insert in elaborate filigree Farber
- 261. Amber Statuesque Nude claret
- 262. Amber Statuesque Nude champagne
- 263. Crown Tuscan 10½" ring stem vase, gold encrusted Portia,
- 264. Crown Tuscan 6" globe vase, gold encrusted Rosepoint
- 265. Forest Green cornucopia vase, 11" tall (2)
- 266. Crystal 3500 Line 3 division 6½" relish, brass Farber base
- 267. Amber 8½" Martha Washington plate with leaf engraving (C)
- 268. Azurite perfume lamp, black enamel trim, fits into orig. silverplate base (needs rewired)
- 269. Amber decanter (CII.-16-1321) & 6 pinch glasses
- 270. Rubina 10 oz. flared tumbler, B.-28-1-2, rare
- 271. Amber Honeycomb 10" bowl gold encrusted border, (C)
- 272. Dianthus Pink 3 section, covered relish, B.-33-2-1
- 273. Royal Blue 5" rosebowl/vase B. 32-3-1, large orig. tag
- 274. Rubina 9½" Honeycomb bowl, beautiful color, (C)
- 275. Emer. Green (light) narrow optic tumblers (3) orig. tags and 2 handled clover tray (C)
- 276. Amethyst 3500 Line 6" crimp edge, 2 handle, candy basket
- 277. Moonlight Blue 5" star candlestick (1 only)
- 278. Crystal 2½" star candlesticks
- 279. Amber Decagon 11" center handled cookie tray
- 280. Crystal Cambridge Square sugar & creamer, platinum edges
- 281. Rubina mayonnaise ladle, beautiful, minor line in handle
- 282. Moonlight Blue 2½" seashell nutcup w/ placecard holder (2)
- 283. Peachblo 3" shell ashtray (2)
- 284. Same, Mocha
- 285. Same, Pistachio (2)
- 286. Same, Moonlight Blue
- 287. Crystal candlestick, heavy gold trim, N.-33-19-3500/32
- 288. Crystal Console set, 3400 Line-12" ruffled bowl, 8½" draped lady flower frog, & pr. of 3-lite Caprice sticks
- 289. Mandarin Gold 3½" round stack ashtray (4) (2-orig. tag)
- 290. Crystal Martha blank candlesticks