

Cambridge



Crystal Ball

ISSUE NO. 40

AUGUST 1976

Published monthly by the NATIONAL CAMBRIDGE COLLECTORS, Inc.
To encourage and to report the discovery of the elegant and boundless product
of the Cambridge Glass Company, Cambridge, Ohio

Thoughts from the President - - - -

Now that our convention is over, and nearly all of the final details taken care of, it is time to direct our thinking toward our new club year.

The annual rearrangement of people is well under way. Most of the Chairpeople have been appointed for the various committees. Each is now busy trying to determine which contributions will be most beneficial to the over-all effort. What the strength of the committee will need to be, and who will best supply this strength.

In total, the efforts of the convention week-end were very beneficial to the club. Our net income from all of the activities and sales will approach the three thousand dollar mark. This is a tremendous step toward our objective.

Our book sales are going very well. Every mail delivery brings additional requests for it. The comments we have received so far, have all been positive. They praise the quality of the book and the quantity of pieces shown. We have mentioned it before, but, we would like to remind you again, all of the proceeds realized from the book are dedicated to the Museum fund. Your support will be greatly appreciated.

We are still looking for many of those membership applications that were sent out in the February Crystal Ball. Surely, each of you can entice at least one new person to

our ranks. We have a few people that are contributing a lot of effort toward our club, but what we really need is a lot of members contributing a few efforts in our behalf occasionally. A new member would be very beneficial.

You could also contribute information for this newsletter. A few people at the convention indicated that they would submit information for this purpose, but we need bits and pieces from many of you. It is your newsletter and should reflect your interests. We are not a profit making subscription type monthly that is selling information. We are only a club newsletter trying to high-light the activities of the club and it's members. The fact that we are continuing to find additional information about Cambridge glass to publish is a bonus feature. Each contributor to this newsletter is a dues paying member also and receives no compensation for the articles.

If you are asked to serve on a committee, if you can entice a new member, if you can provide any other assistance to our efforts, please remember that every little bit helps and that it will collectively add up to our "Year of Growth".

Bill

MEMBERSHIP RENEWAL NOTICE

If the date on your address label is - - - **8-76**

This is your last issue of the Crystal Ball!
RE-NEW NOW!! Don't miss a single issue.

CAMBRIDGE CRYSTAL BALL

P. O. Box #416
Cambridge, Ohio 43725

Club News

Official publication of National Cambridge Collectors, Inc., a non-profit Corporation with tax exempt status. Published once a month for the benefit of its members. Membership is available for individual members at \$10 per year and additional members (12 years of age and residing in the same household) at \$3 ea. All members have voting rights, but only one CRYSTAL BALL will be mailed per household.

Back issues of the CRYSTAL BALL are available to members only, at a cost of 60¢ each or 12 issues for \$7.

1976-77 Officers & Committee Chairpersons

PRESIDENT ----- William C. Smith
VICE-PRESIDENT ----- David G. McFadden
SECRETARY ----- Janice Hughes
TREASURER ----- David G. McFadden

BUDGET & FINANCE ----- William C. Smith
BY-LAWS -----
CONVENTION ----- John Wolfe
MEMBERSHIP ----- Sue Rankin
MUSEUM ----- Larry Hughes
PROGRAM & ENTERTAINMENT ----- Doris Isaacs
PUBLICITY ----- Jack Rettig
STUDY GROUP ADVISORY --- Frank Wollenhaupt
PROJECT ----- David B. Rankin

1976 CAMBRIDGE AUCTION ----- Lynn Welker

CRYSTAL BALL Editor ----- Phyllis D. Smith

CLASSIFIED ADVERTISING RATES

5¢ per word \$1.00 minimum

We cannot mix type size in classified advertisements. Abbreviations and initials will count as words. Payment in full must accompany all ads.

DISPLAY ADVERTISING RATES

	Members	Non-Members
1/8 page -----	\$ 4.00 - - -	\$ 6.00
1/4 page -----	7.00 - - -	10.00
1/2 page -----	12.00 - - -	18.00
3/4 page -----	17.00 - - -	25.00
Full page -----	22.00 - - -	33.00

DEALERS DIRECTORY

1" ad ----- \$5.00 for 6 months

Cambridge CRYSTAL BALL assumes no responsibility for items advertised and will not be responsible for errors in price, description, or other information.

Advertising copy must be in our hands by the 15th of each month to assure publication in our next issue. Advertisements containing reproductions will not knowingly be accepted unless clearly stated.

Please address all correspondence to:

Cambridge CRYSTAL BALL
National Cambridge Collectors, Inc.
P. O. Box #416
Cambridge, Ohio 43725

PLEASE NOTIFY US IMMEDIATELY OF ANY CHANGE
IN YOUR ADDRESS!

PLEASE enclose a Self-Addressed, Stamped
Envelope when requesting information.

NATIONAL CAMBRIDGE COLLECTORS, INC.
Third Annual Quarterly Meeting - June 27, 1976
Cambridge Country Club, Cambridge, Ohio

The meeting was called to order at 9:50 A.M. by President Smith, with 12 Board Members and 90 Club members from 16 states in attendance. The minutes of the February 15, 1976 Quarterly meeting were read by Janice Hughes and approved.

The Treasurers report was given by Dave McFadden showing the Club has a balance of \$2,790.58 and the Museum Fund \$2,795.81.

President Smith announced that the flowers in the bud vases were donated by Mr. & Mrs. Edward Ruby and Mr. & Mrs. Larry Hughes. The red, white and blue birds which were given as favors at the Banquet, were made by the Mosser Glass Co., Cambridge, Ohio, from an old Cambridge mold.

President Smith announced the officers for the coming year as follows: President - William C. Smith, Vice-President - David G. McFadden, Secretary - Janice Y. Hughes, Treasurer - David G. McFadden.

COMMITTEE REPORTS

BY-LAWS: Chairman Dave McFadden reported the revised By-Laws were mailed in the June CRYSTAL BALL and thanked Sue Rankin and Joy McFadden for their assistance.

CONVENTION: President Smith advised he would have a full report at a later date.

CRYSTAL BALL: Editor Phyllis Smith expressed her appreciation to everyone who had helped in any way toward the publication of the CRYSTAL BALL. She advised the membership of the need for more advertising and ideas for a cartoon.

MEMBERSHIP: Chairman Dave Hardesty reported to date we have 368 members from 33 states, with 25 delinquent.

PROJECT: President Smith advised that Charles Upton had resigned as Project Chairman and thanked him for his efforts.

PUBLICITY: Chairman Frank Wollenhaupt reported he is now placing ads for the 1930-34 Cambridge Glass Company Catalog Reprint in all major publications.

STUDY GROUP ADVISORY: Chairman Dave Rankin reported there are still only two active Study Groups, but interest in forming additional groups has been expressed from Massachusetts to California.

BUDGET AND FINANCE: Dave Rankin reporting for the Budget and Finance Committee indicated that financial plans established at the beginning of the club year had proven to be successful. Membership income increased 19%, advertising income increased 125% and expenses decreased 22%. Net operating income for the year was \$1,240, bringing the operating fund balance to \$79 in the Black. The combined effect of our operating and museum activities was a \$2,900 increase in our fund balances.

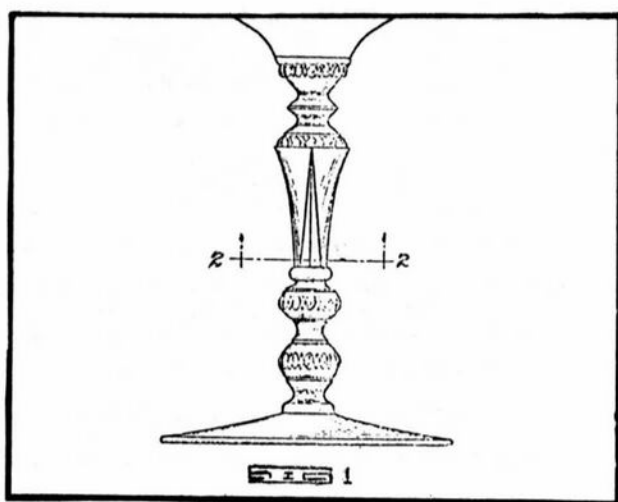
CLUB NEWS continued on page 11

Stems

by Frank and Vicki Wollenhaupt

This month finds us looking at two patents. Each patent was designed by a different person and granted 19 months apart.

The first patent was filed by W.L. Orme, August 25, 1931 and was granted design patent #85,388 on October 20, 1931. (figure 1)



The second patent was filed by J. C. Kelly, January 20, 1933 and was granted design patent #89,769 on May 2, 1933. (figure 2)

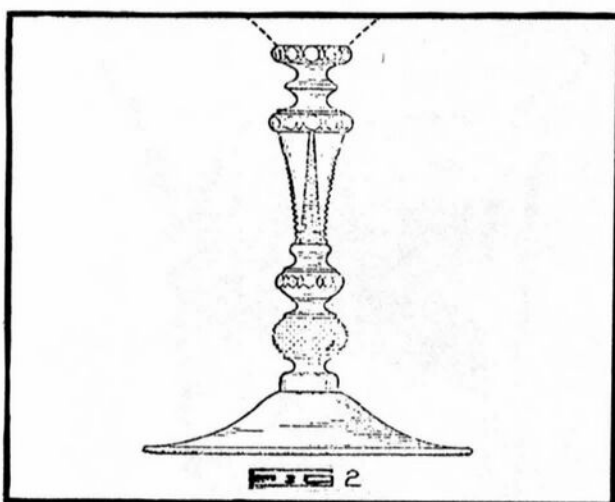
Stem #1 is a mystery stem. As far as we can tell at this time, this stem was never in production.

The second stem (figure 2) is the #3500 stem. This stem is one of the more popular. It is found with Rosepoint and many other etchings. It was also used for rock crystal engravings.

In looking at the two stems, we can see a great similarity between them. The main differences are: #1, the ring at the top of the stem; #2, the ring at the top of the points; #3, the crosshatch design on the points; #4, the round knob at the bottom of the stem; and #5, the foot.

After looking at all the similarities we can only speculate that figure 1 was the forerunner of the #3500 stem.

The #3500 stem is shown for the first time in "China, Glass and Lamps" April, 1933. The ad states "Valencia --- Continues Cambridge leadership in etching. The beautiful lattice work is set off with a bowknot effect. This etching is particularly striking on the new No. 3500 Gadroon patented shape,



in stemware and accessory pieces."

The items made in the #3500 line are as follows: goblet, long bowl, goblet, short bowl, 7 oz. tall sherbet, 7 oz. low sherbet, 5 oz. cafe parfait, 3 oz. cocktail, 2½ oz. wine, 4½ oz. claret, 4½ oz. oyster cocktail, 1 oz. cordial 13 oz. ftd. tumbler, 12 oz. ftd. tumbler, tall, 10 oz. ftd. tumbler, 5 oz. ftd. tumbler, 2½ oz. ftd. tumbler.

If anyone has one of our mystery stems, please let us know about it.

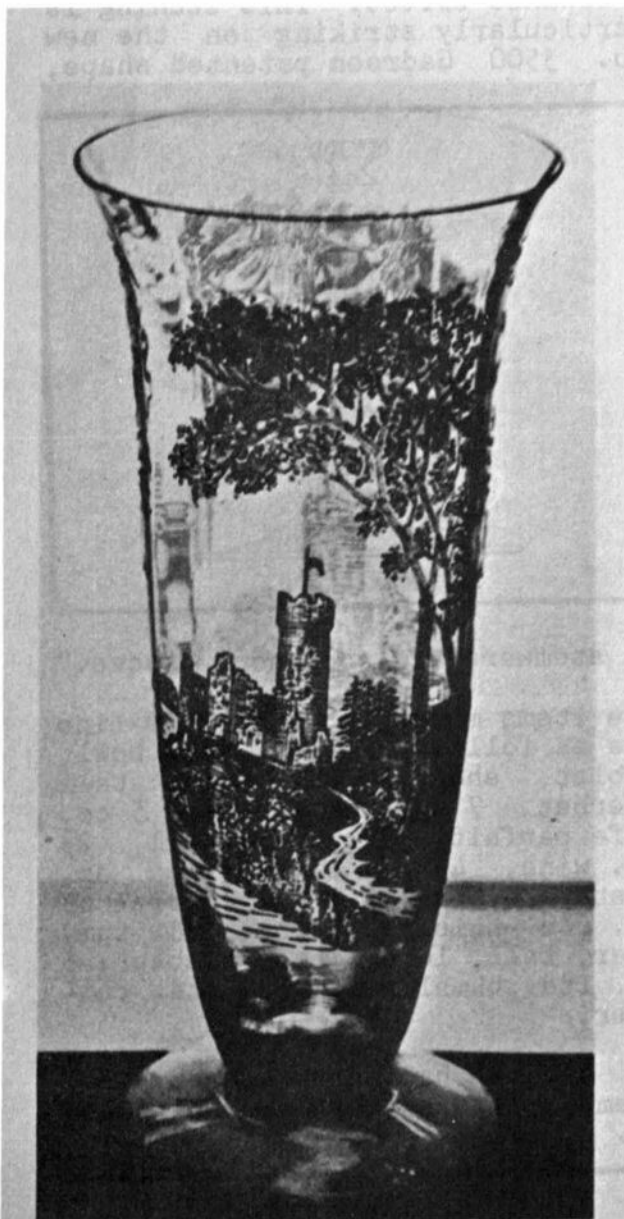
DEADLINE NOTICE

Due to vacation schedules, all advertisements and copy for the September issue of the CRYSTAL BALL, must be in our hands on or before AUGUST 10, 1976!!

etchings

The Windsor etching, (shown below) and many other new etchings can be found in our new 1930-34 Cambridge Glass Company Reprint.

The photo below was found in the February, 1931, edition of "China, Glass and Lamps".



The Cambridge vase above is brand new and features their latest etching—the Windsor. This is a very pretty number and is a typical example of their new lines.

BOOKS FOR SALE

National Cambridge Collectors, Inc. is proud to announce that you can now order all of the available reference books on Cambridge glass directly from the Club.

Address your orders for any of the following to:

BOOKS
National Cambridge Collectors, Inc.
P. O. Box 416
Cambridge, Ohio 43725

"1930 - 1934 CAMBRIDGE GLASS CO. CATALOG REPRINT"
by National Cambridge Collectors, Inc.
(250 page reprint of original catalog)
Hardbound with Price Guide \$14.95

"THE CAMBRIDGE GLASS BOOK"
by Harold and Judy Bennett
(96 pgs. with 59 color plates) \$9.95

"1975 PRICE GUIDE TO THE CAMBRIDGE GLASS BOOK"
by Charles and Mary Alice Upton
(Prices for each item in Bennett book) \$1.75

"CAMBRIDGE, OHIO GLASS in COLOR II"
by Mary, Lyle and Lynn Welker
(15 color plates w/description and notes) \$5.95

"CAMBRIDGE GLASS CO. BOOK II"
by Mary, Lyle and Lynn Welker
(119 pgs. of reprints from old catalogs) \$6.95

"1903 CAMBRIDGE GLASS CO. CATALOG REPRINT"
by Harold and Judy Bennett
(106 page reprint of original catalog) \$7.50

OHIO RESIDENTS ADD 4½% SALES TAX



Flower Holders

by Bill Smith

This month we take pleasure in introducing you to two fair ladies from Japan. Via the city of Cambridge, that is. The ladies are Geisha Girl number 522 and number 523.



FIG. #1
#522 Holder
(Uses same Base
as #523)



FIG. #2
#523 Holder
with Base

According to the catalog description, these ladies are each 13 inches high. Old advertising indicates that they are 12 inches high. From actual measurements, the catalog is more correct. There is, however, variation found in the heights.

Mr. Webster's dictionary defines a Geisha as, "a Japanese professional singing and dancing girl". Perhaps this would account for the similarity of the costumes.

We have questioned many people knowledgeable in the Oriental customs regarding the two variations of hair style. The only explanation for the difference seems to be that they are different girls. Being individuals they each had their own style.

We have heard it discussed that Mr. Bennett must have had a personal appreciation of the Orient to have used so much of it's influence in his designs. Recent glimpses into the background seem to indicate that this influence in the design of Cambridge glass would have been the result of market preferences of the period rather than the personal preference of Mr. Bennett. Many products carried similar design influence during the late Twenties.

Whatever the reason for the design, we feel that these are truly two very attractive ladies. This is especially true when viewed in the various colors of Cambridge. Our ad states that they were produced in Emerald, Amber-glo, peach-blo and crystal. We have also seen them in opaque colors.

These figures differ from those shown in past articles in the fact that the figure and the base are separate pieces. The figure, as show by Fig.#1, has a threaded screw type bottom. This threaded portion was screwed into a metal retaining ring which had been inserted into an opening in center of the base from the bottom. These parts may be seen in FIG.#3.

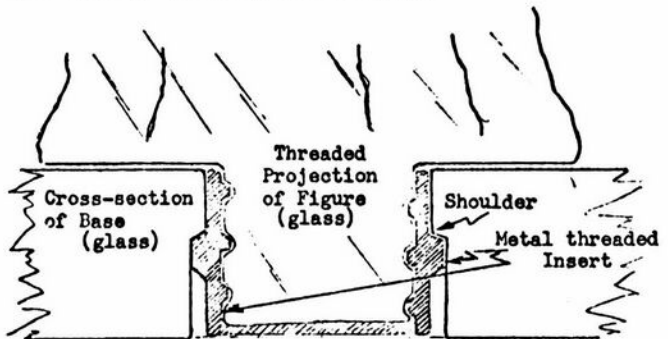


FIG. #3

The retaining ring was formed with an extension the outer circumference which engaged with a shoulder molded in the base. Pressure thus applied by the threads would hold the figure.

These figures seem to be slightly more plentiful than the Eagle recently discussed. Their attractiveness coupled with the degree of rarity creates premium prices in the show booths.

Sketches courtesy of Mr. Paul Roberts.

COLLECT CAMBRIDGE

NEARCUT Patterns

TRADE
MARK
'Nearcut'
MARK



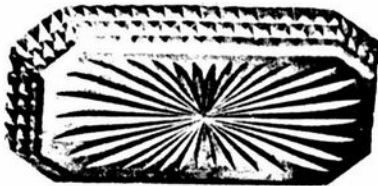
No. 41
Bucket, Sugar
Handle



No. 184
5 1/2 inch Honey Dish and Cover
Square

by Phyllis Smith

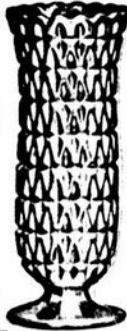
Our NearCut Pattern this month is named Lexington and is #2860. Once again, I find myself trying to give you information about a pattern of which very little is known.



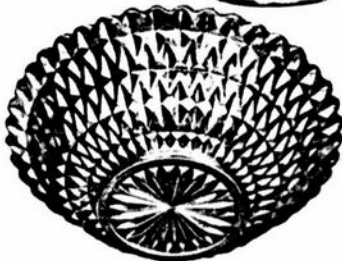
No. 98. 10 1/2 inch Celery Tray



No. 148
7 inch Rose Bowl



No. 214
8 inch Vase



No. 269
4 1/2, 6 1/2, 8 1/2 inch
Nappies



No. 1. Spoon



No. 1. Cream



No. 97. Celery, Tall



No. 328. 9 inch Pickle, Cante



No. 10
Berry Sugar



No. 10
Berry Cream



No. 1
Sugar and Cover



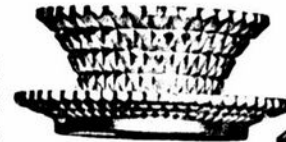
No. 215
8 1/2 inch Jug
Turquoise

The NearCut trademark shown on the catalog page these pictures came from, is my only clue as to when this pattern was introduced. According to our Trademarks authority, David Rankin, (April, 1975, CRYSTAL BALL, pg. 9), he states, "We will, therefore, use a date range of 1915-1922 on this trademark."

A couple of years ago, while researching old reference material in the Carnegie Library, Pittsburgh, Pa., we came upon several inserts for an old Cambridge Glass Company catalog. These inserts were not dated, but did contain four pages that advertised the Lexington pattern in both crystal and amber.

The fact that Lexington was made in amber (we have not seen it in other transparent colors) would indicate that it was carried in their line for several years.

We have seven pieces of Lexington in our collection (six in crystal and 1 in amber) and not one is marked in any way. So, here again, study of your pattern is very important.



No. 255
Mayonnaise Bowl and Plate



No. 1
Butter and Cover



No. 297. 7 1/2 oz. Oil



No. 55
8 inch Bowl
Footed



No. 358. 9 inch Salver, Footed



No. 335. 7 1/2 inch Preserve, Hexagon

Ebon

by CAMBRIDGE

We are this year presenting Ebon.

Ebon is a black glass with a finish totally unlike any which has been on the market before. To describe this finish is difficult; to say it has a mat finish is incorrect, it really is a rough mat finish to which has been added a luster—a dull sheen which gives it a soft beauty. Borrowing, and changing a little, a phrase from a certain cigarette advertisement, Ebon is both a Treat and a Treatment.

Ebon is modern in that it harmonizes with the decorative trends of today; but its soft luster and flowing but distinct lines make it compatible with any period. It becomes a part of any color scheme and enhances any background against which it is shown.

The Cambridge Square Line has been noted for its correct lines and distinctive square base. The Ebon treatment brings out and emphasizes these predominate traits to such an extent that it could well be named "Silhouette".

- 1953 -



THE CAMBRIDGE GLASS COMPANY

CAMBRIDGE, OHIO

... fine American hand-made glassware ...

▲ The salad bowl set illustrated at the right is from the Cambridge Glass Co.—one of their newest pressed lines, called the "Virginian." Early American in theme, this new design has a diamond pattern and a deeply-ridged edge line, and it is shown in a full line of flatware and fancy items, together with stemware.

"China, Glass and Lamps" 2-38

THE BIG ONE !

ALL

CAMBRIDGE GLASS

AUCTION

Guernsey Catholic Central
High School

S. R. 209 S
Cambridge, Ohio
(Exit I-70 at SR 209)

SATURDAY, AUGUST 21, 1976

Starting at 11 AM
(Viewing will begin at 9:30 AM)

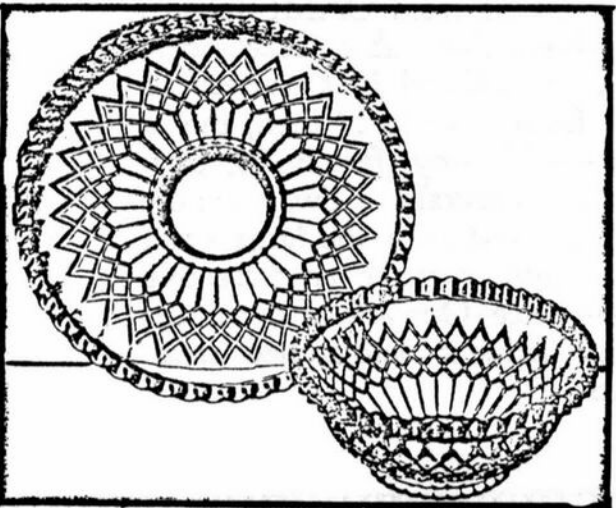
ALL PROCEEDS BENEFIT MUSEUM FUND!

All things are "GO" for our 1976 All Cambridge Glass Auction. Enclosed with this CRYSTAL BALL, you will find a complete list of items to be sold.

NOTE: In the past some consignment checks have been issued after the Auction. This year, ALL consignment checks will be mailed to consignees the following week.

Food will be available at the school by the Church women!

Auctioneers for this event are
COL. MAX D. CATER and DALE SNODE



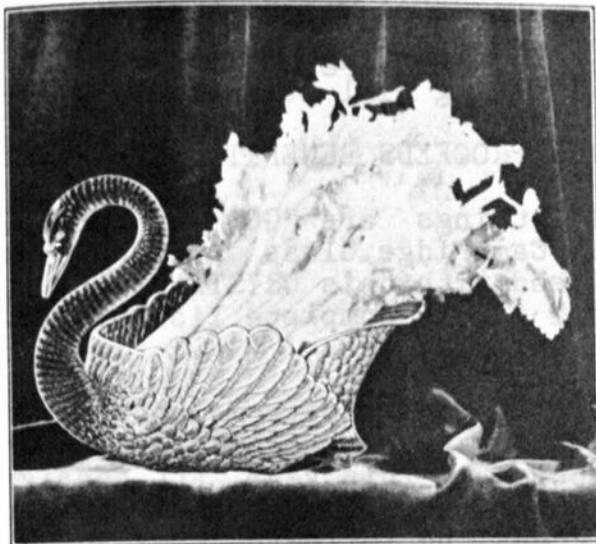
TOUCH OF HISTORY

Jack and Sue Rettig

China, Glass & Lamps

Among the outstanding wares of 1928 was the line of useful and decorative swans in attractive transparent colors. Buyers know what good merchandise the line of swans is.

Can be had in all the CAMBRIDGE colors, including Peach, Emerald, Crystal and Ebony. May be retailed at from 25 cents to \$5.00 the piece.



July, 1930



SWANS



Glass Swans from CAMBRIDGE are distinctive table accessories. They are offered in a variety of sizes, from three to 13 inch, and in choice of Ebony, Peach-Blo, Crystal and Emerald. Swan candle holders, used with the large swan flower holder, make an attractive center piece. Our line of decorated swans includes acid-etched treatments.



An Open Letter To The Membership.

I would like to say "Thank You" to everyone who made it a point to contact me and express their appreciation for my efforts as Secretary this past year at the First Annual Antique Show and the Third Annual Convention. It was such a pleasure to finally be able to put faces with all the names that I have corresponded with. It is the association with people such as you that makes the National Cambridge Collectors such an enjoyable organization. I sincerely hope all of you enjoyed the Convention events as much as I did and that you will be able to attend again next year.

I would like also to take this opportunity to say "Thank You" to Charles Upton, Margaret and Miriam Hawes, Dave Hardesty, Jean Powers, Bill and Meg Turner, Ed and Mary Ruby, John Wolfe, Joy McFadden, Vicki Wollenhaupt, Robert Coyle, Evelyn Allen and especially Doris Isaacs, Jo Barstow and my husband Larry, for their assistance at the N.C.C. Booth at the Antique Show. Please know that if I have forgotten anyone, I am sorry, but at times it was hard to distinguish between who was working or just visiting. This was my first experience at being "dealer" and might I add that I am most happy at being just a collector.

Again, with sincere "Thanks", I am

Sincerely,

Janice Hughes
Secretary

we get letters

This year's convention was the best one yet. We enjoyed the Country Club so much more than the previous headquarters. The Get-Acquainted party was a great idea. Everything seemed to move along so smoothly, we know this doesn't happen by accident but takes lots of hard work and planning.

Thanks for a lovely weekend, we're looking forward to next year's Convention.

Phyllis, we want to tell you too, what a great job you're doing with the Crystal Ball. We look forward to each new issue.

Ed & Dot Lentz, Ohio

My sincere apologies for being so tardy with our reactions to the '76 Convention. All three of us enjoyed every minute and truly felt it was worth the effort involved to get us all there.

You both should feel proud of what you and your officers have accomplished during this past year and - also - be made aware of how fine a Convention you planned for your members.

True, it was hot at the Show, but large air conditioned areas, I am sure, are not overly plentiful. Having the Show at the old scheduled date would remove us from the more intense hot weather. Guess Bob and I are routing for the old May date 'cause it better fits our schedule. However I realize we are only two out of (?) how many and we'll still make every effort to come - no matter when.

The Country Club was absolutely great for our activities and the food and service excellent. Mother is still telling everyone about the waitress who remembered she drank Sanka!!

Continued-

The only suggestion I could possibly make would be to support the suggestion of the member from Georgia who would like to have Seminars during the afternoon. Again, I realize how thin you all have to spread yourselves and there can be too many activities. However, perhaps, one Seminar could be planned. Perhaps on colors - or some such general, important, phase.

Thanks again to both of you and all involved in making such fine arrangements for the 1976 Convention. One of the most outstanding features is the friendliness of everyone.

Marcia Ellis, New York

In the April 1976 issue of Cambridge Crystal Ball you illustrated 17 NearCut glass baskets. This was the first and only time I have ever seen illustrations of them and since I collect glass baskets only, I sincerely appreciate your writing this article.

My question for you is: Do you know where any of the baskets are on sale? I have 3 or 4 Cambridge baskets but am always interested in others.

Robert N. Bell, Ohio

Comment: Dear Bob, I suggest you contact the dealers listed in our Dealers Directory (page 12). I feel sure that one or all of them would have Cambridge glass baskets. Thanks for your kind remarks concerning my NearCut Patterns article. ----- Phyllis Smith, Editor

Don't forget our _____
QUARTERLY MEETING
_____ You are invited!

Saturday, August 21, 1976 - 8 PM

Interesting Program Promised

LOCATION TO BE ANNOUNCED AT THE AUCTION

STUDY *Club News*

----- HOKEY - POKEYS -----

The June meeting of the Hokey-Pokeys Study Club was held in the home of Bill and Phyllis Smith. Eight members were present.

As we continued our discussion of researched information from trade journals, we inspected the ads for the year 1924. Two etchings were mentioned "Etta" and "Bordeaux".

This year introduced several opaque colors: Jade, Ivory and Primrose. The transparent color that was mentioned was "cobalt blue". The Cambridge Glass Company was selling gold encrusted stemware in cobalt, mulberry, emerald and amber. Boudoir sets were popular in 1924 - we collectors of today call it a night set. It was the small pitcher, glass and the tray for the bedside.

Gold and silver stippling decoration was done at the factory. Other items produced that year included: salad and desert plates in round and oval in the transparent colors, a common sense relish and a glass flower vase insert. Another new item for this year of 1924, was the Ram's Head console set.

Reported by Vicki Wollenhaupt

----- CAMBRIDGE SQUARES -----

The Cambridge Squares met at the home of Charles and Mary Alice Upton for their July 15th meeting. There were fourteen members and thirteen guests present.

Charles led the program by selecting several items from his beautiful display room and the group

identified them using catalogs. The object was to familiarize each person with the authentic reference materials available. Some items identified were #3035 stemware with Bordello decoration, Mt. Vernon comport, #2841 NearCut vase, royal blue Tally Ho urn with gold silk screen lace decoration and a #3300 pink sherbet. The May, 1976 CRYSTAL BALL was used to identify the last item.

"Show and Tell" items included an artist signed Cambridge Art Pottery mug, Rosepoint gold encrusted dish, #3300 sherbet, crystal dog and some salt dips. Black light was utilized.

The next meeting will be September 11th at the home of Reba Embree of Cambridge. The topic will be etchings.

Reported by Doris Isaacs

THANKS!

In trying to hurry with the last issue of the CRYSTAL BALL, we inadvertently left out a couple of very important items we wished to say thank you for.

First of all, we want to give a most hearty "Thanks" to John Wolfe for his excellent job as master of ceremonies at our Saturday evening Banquet. John was also present and helping in every way he could in the Display Room and the N.C.C. Booth.

We also wanted to say "Thank You" to Ed and Mary Ruby for their thoughtfulness in sending the beautiful red roses for our Show opening to be used on our registration table.

If we have missed saying "Thanks" to anyone else, please accept our apologies and forgive us our frailties.

Club News

Continued from page 2

MUSEUM: Chairman Ed Ruby advised the Museum fund has a balance of \$2,795.81, plus an inventory of 2 valves for plates; 1 paperweight; 1 urn; 1930-34 Cambridge Glass Catalog, Volumes I and II; and a 1949 original Cambridge Glass Catalog which was purchased at the 1976 All Cambridge Glass Auction. He expressed hope for a more extensive list next year.

PROGRAM: Chairman Evelyn Allen reported the three previous Quarterly meetings had programs covering: figurals, cuttings, etchings, reproductions and reissues.

SPECIAL COMMITTEE: Chairman Steve Horner reported that although the Burton Flea Market had been cancelled, he still had hopes of having a Flea Market yet this year.

1976 ANTIQUE SHOW: Chairman Evelyn Allen reported that at this time the Show was a "great success" and would show a "great profit".

1976 AUCTION: Chairman Lynn Welker reported the All Cambridge Glass Auction will be held on Saturday, August 21, 1976, possibly at Guernsey Catholic Central High School, but would definitely be announced in the July CRYSTAL BALL. He advised Mail Bids will be accepted and consignments in the amount of 25 pieces per person.

OLD BUSINESS

President Smith reported the 1930-34 Cambridge Glass Company Catalog Reprint with Price Guide was delivered at 10:50 A.M. on Friday, June 25, and reminded everyone that the Price Guide is only a guide.

NEW BUSINESS

President Smith reported the dates for the next four Quarterly meetings will be as follows:

August 21 or 22, 1976 (depending on Auction)
Sunday, November 14, 1976
Sunday, February 20, 1977
Convention, June 24, 25, 26, 1977

President Smith explained the Price Guide and advised that the profits from the 1930-1934 Cambridge Glass Company Catalog Reprint and Price Guide will go to the Museum fund.

President Smith introduced Mr. J. P. Martin of

Blairsville, Penna., whose father was a longtime employee of Cambridge Glass Company. Mr. Martin advised he will attempt to write articles for the CRYSTAL BALL.

Several members requested a more detailed description and report in the CRYSTAL BALL of the Quarterly meetings.

Secretary Janice Hughes explained to the membership the reason for the "fine" that usually appears at the end of the Secretary's report. Anyone saying "Heisey" during a Board meeting or Quarterly meeting is fined 25¢ each time the word is said.

The Door Prize, a Floral Centerpiece, was won by Mr. J. P. Martin. He then turned it over to the President to be Auctioned to the highest bidder. Zee Lopes of Benicia, Calif., was high bidder at \$15 and instead donated \$20 to the Club. She then returned the flowers to be used on the Registration table for the balance of the Convention.

President Smith reported that the Club had received a \$10 donation towards the insurance for the Display Room from Mr. & Mrs. G.W. Stone, Larkspur, Calif., and Mr. Robert Coyle, Newark, Ohio, had donated the \$25 which he won as prize for Best Show Booth at the Antique Show, back to the Club.

President Smith reported this had been a "YEAR OF PROGRESS" and hopes to make the coming year a "YEAR OF GROWTH".

A motion was made by Dave Rankin to adjourn at 11 A.M.

Janice Hughes
Secretary

Classified

FOR SALE: CAPRICE, Moonlight Blue: 8 luncheon plates, 8 bread & butter plates, 6 sherbets, 7 tumblers, 2 relishes, 1 set cream and sugar, 1 candy dish, 1 large shell ashtray, 1 small shell ashtray w/card holder, 2 sets small salt and pepper, 1 set large salt and pepper, 8 cups and saucers. Mrs. Dean Harrold, R.R. #5, Cambridge, Ohio 43725 - Phone: 614-432-6006.


WANTED
YOUR CONSIGNMENT!
For Auction At SALT FORK JUNCTION
Let Us Sell It For You One Item
Or A Truckload. NO JUNK Please
Collectors or Dealers
CALL Bob Detrick - 614-432-2873 Ken Holland 439-3757

Antique Consignment AUCTION
Aug. 14 & Sept. 11 at 12: Noon
at SALT FORK JCT.
Located on St. Rt. 22 at I-77 -
Cambridge, O.
COL. ROBERT DETRICK
Auctioneer
802 Clark Street
Cambridge, Ohio 43725
Phone 614-432-2873
TOWN & COUNTRY AUCTION SERVICE
All Under Cover Parking

DEALERS



DIRECTORY

<p>ANTIQUÉ ALLEY 24815 Broadway Bedford, Ohio - 44146</p> <p>216-232-7739 ---- Marie Spagnola CAMBRIDGE GLASS ROYAL DOULTON</p>	<p>BLACK ROOSTER ANTIQUES 1018 Clark Street Cambridge, Ohio--43725</p> <p>614-439-2549 ----- M. Sipe CAMBRIDGE GLASS - GENERAL LINE</p>	<p>COLLECTOR'S HAVEN 135 Cynthia Street Heath, Ohio -- 43055</p> <p>614-522-1635 SPECIALIZING IN CAMBRIDGE GLASS</p>
<p>D'MARIE'S ANTIQUES Rt. #1, c/o Eastern Antique Mart. Thornburg, Virginia--22565</p> <p>703-582-5859 ----- Jim Rankin OPEN DAILY - EXCEPT MONDAY</p>	<p>HAROLD AND JUDY'S ANTIQUE SHOP 437 North 8th Street Cambridge, Ohio -- 43725</p> <p>614-432-3045-Open by Appointment SPECIALIZING IN CAMBRIDGE GLASS!</p>	<p>HERITAGE ANTIQUES Rt. #5, Cambridge, Ohio - 43725 614-439-3241</p> <p>TAKE N.8th St.Rd.(County Rd.#33) TURN LEFT AT RAILROAD TRACK.</p>
<p>HOBBY HOUSE ANTIQUES Rt. #1, Cambridge, Ohio - 43725 614-432-6971 - Frank & Lena</p> <p>TAKE RT.#209 W.FROM CAMBRIDGE TO RT.#658 - NORTH 1½ MILES.</p>	<p>HOFFHAVEN ANTIQUES 21 Half Moon Lane Tarrytown, New York -- 10591</p> <p>Mail-Shows-Phone -- 914-631-2140 CAMBRIDGE, Fosteria Rose In Snow</p>	<p>MARGARET LANE ANTIQUES 2 E. Main Street New Concord, Ohio--43762</p> <p>Lynn Welker ----- 614-826-4418 CAMBRIDGE GLASS MATCHING SERVICE</p>
<p>LEGEND INN </p> <p>1225 W. Church St., Newark, Ohio 614-344-2136 43055</p> <p>-----</p> <p>Dine with us and see our CAMBRIDGE GLASS COLLECTION</p> <p>Open 4-11 PM Daily Closed Sunday and Holidays</p> <p>HAROLD & MILDRED WILLEY, OWNERS</p>	<p>PRESIDENTIAL COIN & ANTIQUE CO. 6222 Little River Turnpike Alexandria, Virginia - 22312</p> <p>Gail B. Levine ---- 703-354-5454 WANT LISTS SOLICITED-OPEN 6 DAYS</p>	<p>PAUL AND GINNY HENDERSON 1072 Green Street Iselin, New Jersey 08830</p> <p>Open by Appointment-201-283-3181 SPECIALIZING IN CAMBRIDGE GLASS!</p>
<p>WILMA SAXTON P.O.Box 43, Berlin, N.J. 08009</p> <p>CAMBRIDGE-HEISEY-ROYAL DOULTON SHOWS & MAIL ORDER--609-767-1470 Or Call TOLL FREE 800-257-8161</p>	<p>NATIONAL CAMBRIDGE COLLECTORS, Inc. Post Office Box #416 Cambridge, Ohio - 43725</p> <p>Address Correction Requested</p>	
<p>GOLDSBERRY'S ANTIQUES 6336 H Ave. E. Kalamazoo, Michigan 49004</p> <p>Ray and Jennie ---- 616-381-3013 SHOWS ONLY - CAMBRIDGE & HEISEY!</p>	<p>FIRST CLASS MAIL</p>	
<p>MARY & WILBUR HENDERSON 303 Guilford Avenue Woodsfield, Ohio 43793</p> <p>SHOWS ONLY -- 614-472-1133 SPECIALIZING IN CAMBRIDGE GLASS!</p>		
<p>BLUE BELL ANTIQUES Route 19, Wexford, Pa. 15090 3 mi.S.Pa.Twp.Exit 3--Perry Hwy.</p> <p>OPEN: 10AM-5PM - FRI.& SUN.to 9PM AL AND MARY JANE MILLER</p>		
<p>ALL CAMBRIDGE GLASS AUCTION → August 21, 1976 - 11 AM ← Guernsey Catholic Central Hi Sch.</p>		

QUARTERLY MTG. will be held at Columbia Gas Co., 202 Highland Ave., Cambridge!