

Cambridge



Crystal Ball

ISSUE NO. 43

NOVEMBER 1976

Published monthly by the NATIONAL CAMBRIDGE COLLECTORS, Inc.
To encourage and to report the discovery of the elegant and boundless product
of the Cambridge Glass Company, Cambridge, Ohio

Thoughts from the President - - - -

Recent research regarding a persons ability to remember has produced some interesting results. This research has shown that we retain 10% of what we hear, 40% of what we see, and 80% of what we get involved with.

With this issue we invite you to test the validity of this research. How?? By attending our November Quarterly Meeting.

The meeting will be held Sunday afternoon November 14th at the Columbia Gas Co. offices, 202 Highland Avenue, Cambridge. The meeting will start at 1:30 P. M.

The Program Committee indicates that they will have a guest speaker who will have something for us all to hear about the operation of the Cambridge Glass Co. They will also have a "Show & Tell" session as part of the meeting so that you can see the various pieces that other members bring for the display. And lastly, you will have the opportunity to participate and to get involved with the activity of the Club. Based on the quality of past Quarterly Meetings, if each of us are able to retain 80% of what goes on, we will reap a rich harvest of Cambridge knowledge.

Possibly the greatest benefit that you will reap will be the pleasant feeling that one derives from association with friendly, interested people. We offer you a great group of people. The Collectors of Cambridge.

We recognize that geography will preclude the attendance of many of you, but we also recognize that nearly half of our membership live within a four hour drive of Cambridge. This would indicate that we could expect to see many many more of you at the meeting. It will be great having so many more of you with us at this meeting. Getting involved and collecting more information about Cambridge to add to the memory bank.

Our best wishes for a pleasant Thanksgiving to all of you.

Bill

MEMBERSHIP RENEWAL NOTICE

If the date on your
address label is - - - **11 - 76**

This is your LAST issue of the Crystal Ball!
RENEW NOW!!! Don't miss a single issue.

CAMBRIDGE CRYSTAL BALL

P. O. Box #416
Cambridge, Ohio 43725

Official publication of National Cambridge Collectors, Inc., a non-profit Corporation with tax exempt status. Published once a month for the benefit of its members. Membership is available for individual members at \$10 per year and additional members (12 years of age and residing in the same household) at \$3 ea. All members have voting rights, but only one CRYSTAL BALL will be mailed per household.

Back issues of the CRYSTAL BALL are available to members only, at a cost of 60¢ each or 12 issues for \$7.

1976-77 Officers & Committee Chairpersons

PRESIDENT ----- William C. Smith
VICE-PRESIDENT ----- David G. McFadden
SECRETARY ----- Janice Hughes
TREASURER ----- David G. McFadden

BUDGET & FINANCE ----- William C. Smith
BY-LAWS -----
CONVENTION ----- John Wolfe
MEMBERSHIP ----- Sue Rankin
MUSEUM ----- Larry Hughes
PROGRAM & ENTERTAINMENT ----- Doris Isaacs
PUBLICITY ----- Jack Rettig
STUDY GROUP ADVISORY --- Frank Wollenhaupt
PROJECT ----- David B. Rankin

CRYSTAL BALL Editor ----- Phyllis D. Smith

CLASSIFIED ADVERTISING RATES

5¢ per word \$1.00 minimum

We cannot mix type size in classified advertisements. Abbreviations and initials will count as words. Payment in full must accompany all ads.

DISPLAY ADVERTISING RATES

	Members	Non-Members
1/8 page -----	\$ 4.00 - - -	\$ 6.00
1/4 page -----	7.00 - - -	10.00
1/2 page -----	12.00 - - -	18.00
3/4 page -----	17.00 - - -	25.00
Full page -----	22.00 - - -	33.00

DEALERS DIRECTORY

1" ad ----- \$5.00 for 6 months

Cambridge CRYSTAL BALL assumes no responsibility for items advertised and will not be responsible for errors in price, description, or other information.

Advertising copy must be in our hands by the 15th of each month to assure publication in our next issue. Advertisements containing reproductions will not knowingly be accepted unless clearly stated.

Please address all correspondence to:

Cambridge CRYSTAL BALL
National Cambridge Collectors, Inc.
P. O. Box #416
Cambridge, Ohio 43725

PLEASE NOTIFY US IMMEDIATELY OF ANY CHANGE IN YOUR ADDRESS!

PLEASE enclose a Self-Addressed, Stamped Envelope when requesting information.

STUDY Club News

HOKEY-POKEYS

The Hokey-Pokeys Study Club held their meeting October 1st, in the home of Dave & Sue Rankin, Englewood, Ohio. The discussion for the evening was based on the year 1937.

Beginning in March, 1937, the Cambridge Glass Company began their first national advertising campaign in three of America's most influential magazines -- Ladies Home Journal, The American Home and House & Garden.

Wild Flower, Firenze and Bordero were all new etchings that year. The Stradivari stem and the Pristine line were introduced in March and April.

Also new in July was the "color - Windsor Blue - a tone of icy blue in opaque glass, appearing in a small group of decorative items in the Shell shape".

Several cuttings in the Rock Crystal line were also introduced. They were Celestial, Chesterfield, Laurel Wreath and Belfast.

Submitted by Phyllis Smith

CAMBRIDGE SQUARES

The Cambridge Squares met Sept. 11, in the home of Reba Embree, Cambridge, Ohio. Fourteen members and one guest were present. We welcomed Mr. & Mrs. Burr Nichols as new members.

It was decided to take a dozen Bumper Stickers to the Bellaire Glass and Artifacts Museum, to be used with the Cambridge Glass on display there.

The topic was etchings and what a lovely display. Carmen with gold

Continued on page 5

Rock Crystal Engravings

by Joy McFadden

Rock Crystal by Cambridge is some of the most beautiful glassware produced by the Cambridge Glass Company and yet at this time seems to be of least interest to the collector.

Perhaps collectors would better appreciate Rock Crystal if they could see a glass cutter at work. Before the piece of glass goes to the cutter, a few guide lines are made with a white ink or similar substance which will come off. The cutter sits at his workbench facing the wheel attached to his bench, and as the wheel turns, water is dropped on it to decrease the friction. Touching the glass to the wheel is what makes the cuts in the glass. The glass cutter's true skill is recognized when you realize that he cuts the pattern into the glass and determines the depth and spacing of the cuts with only the aid of the guide lines. After the cutting is complete, the article cut is termed a "gray cutting". It must be acid polished to produce the brilliant surface known as Rock Crystal.

The glass cutting department at Cambridge was owned by Hershel Hancock, who worked there from about 1918 until 1954. In his 36 years at Cambridge, he created perhaps seventeen to eighteen hundred different patterns. A number was assigned to each cutting and a name was selected by the Cambridge Glass Co.

Why aren't collectors of Cambridge glass interested in Rock Crystal? Perhaps it is because the patterns are not easily recognized and there is very little published information about Rock Crystal. It would seem at this time that the easiest way to find Rock Crystal by Cambridge would be to look for a familiar blank or a recognizable stem. If one would take into consideration the number of cuttings made by Cambridge, it seems strange that so little of it surfaces for the collecting public.

In the future, we hope to provide you with information about patterns of Cambridge Rock Crystal, as this information becomes available.

HAND CUT ROCK CRYSTAL
by *Cambridge*

The matchless brilliance of the Cambridge Crystal, revealed in the jewel-like scintillations of the cutting, is famed among connoisseurs of cut rock crystal. We emphasize that every step in the design and making of these future heirlooms is a hand craft, under the sole supervision of Cambridge artisans. Yet prices are comparable to others. Cambridge designs in Hand Etched and Hand Made Crystal are also patented and exclusive. Look for the identifying trademark.

The King Edward, Whitehall, Cranston, Chesterfield, and Vesta cuttings, shown below, are each available in over 100 pieces.

The Cambridge Glass Co.
Cambridge, Ohio

GENUINE
HAND MADE
Cambridge
MADE IN U.S.A.

Cambridge Glass
HAND MADE

The advertisement features a collection of hand-cut rock crystal glassware, including a martini glass, a tumbler, a lowball, and a coupe, all with intricate cut patterns. The background is dark, making the glassware stand out. The text is arranged in a clean, professional layout, with the brand name 'Cambridge Glass' prominently displayed at the bottom.

TOUCH OF HISTORY

Jack and Sue Rettig

China, Glass & Lamps

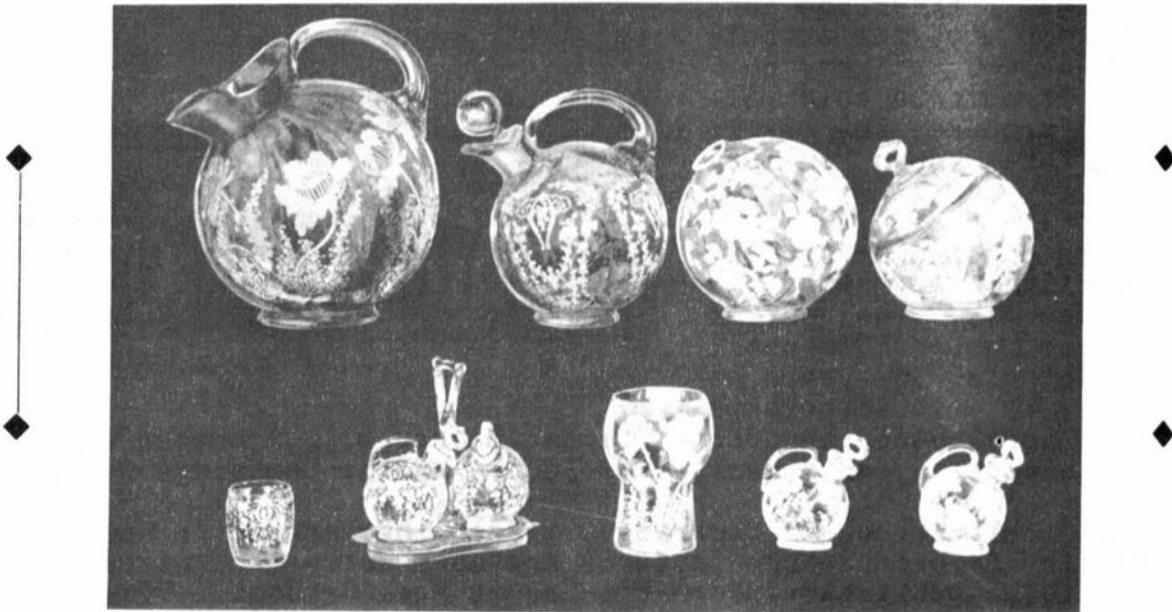


September, 1932

January, 1933



November, 1931



THE No. 3400 Ball Shape Line offers most unique items for gifts at every season. New pieces are being added regularly to the line. They sell on sight. Shown are Jug and Tumbler, Decanter and Tumbler, Ivy Ball, Puff Box, Oil Set and Perfumes. Other pieces are Sugar and Cream and Oil Bottle. All in the saucy ball shape.



PRICES here & there

by N.C.C. Members
and Phyllis Smith

Thanks to you, we have several more prices to pass on to you this month. Do hope we will hear from more of you this next month. It only takes a few minutes -- won't you please join us by sending the Cambridge selling (not asking) prices you see "here & there" in your travels?

Our California reporter informs us of the following transactions: a crown tuscan Sea Shell 8½" bowl \$35; crown tuscan iridescent Sea Shell salad plate \$15; Eleanor blue one-lite candlesticks \$30 pr; Rosepoint 14" plate \$30; crystal swan 6½" \$32; and a crystal Seagull flower holder 9½" \$32.

One of our eastern Ohio reporters attended several Auctions during September and October and here are some of the prices Cambridge glass brought: set of 8 Elaine dinner plates went for \$4 each; a Rosepoint ¼ lb. butter dish sold for \$32.50; 6 pink water goblets on crystal #1066 stems brought \$7 ea; while a center handled emerald green (light) tray with Hunt Scene etching went for only \$9. Eight sets of Decagon emerald green cups and saucers brought \$1.50 per set.

At a recent show in western Ohio, a reporter sends us the news that a #3500/90 amethyst cigarette holder with ash tray foot sold for \$10 and a crystal Aero Optic 8Ooz. ball jug went for \$10. A cute set of individual Gadroon cream and sugar on a tray brought \$22.50 in crystal.

At the same show, a set of six Rosepoint goblets were left sitting with a \$100 price tag, as was a beautiful royal blue Sea Shell footed 8½" bowl at \$65.

From out West, another reporter

sends us the fantastic news that a set consisting of a crown tuscan "mother" swan and nine "babies" was purchased at an outdoor Flea Market for \$16 (yes, you are reading right!). Also a frosted Willow blue 6" Bashful Charlotte for \$4; a crystal Giesha Girl for \$27.50; and a crystal Blue Jay on a #3 base for \$40. This proves that there are still bargains to be had - you just have to be lucky enough to be in the right place at the right time.

That is all for this month. Keep those "cards and letters comin' in folks" and we'll keep sending the information out to be enjoyed by all!

Club News

continued from page 2

encrusting, crystal with silk screen decoration and many different colors made the program a real delight. Besides the better known etchings of Rosepoint, Chantilly, Elaine, Portia, Daffodil and Apple Blossom, several older patterns were represented. These included Wedgewood, Adams, Bordero, Martha, Minerva, Valencia, Lorna, Gloria, #704 and #725.

Items on the "Show and Tell" table included a topaz Everglades mug, Tally Ho dark emerald green cordial, Tally Ho amber cordial with crystal stem, carmen wine with crystal Tally Ho stem, Rock Crystal cut sherbet with #1953 stem, a miniature gold decorated primrose vase, a lemonade set in a green and pink color combination, and -- in milk glass with floral decoration -- a footed cigarette box and a footed shell dish!

The next meeting will be in the home of Frank and Lena Barnes and the topic will be figurals.

Submitted by Doris Isaacs

etchings

by Phyllis Smith

When discussing RARE and desirable items of Cambridge glass, it seems that Japonica and Pomona come to mind first. But don't overlook the equally RARE and sometimes more desirable etched pieces.

The Dragon etching shown here is probably one of the most rare - second only to the Windsor etching shown in the August, 1976, CRYSTAL BALL. (No one has found a piece of Windsor etching that we are aware of at this time.)

Our research information tells us that the Dragon etching and the almost as rare Peacock etching, was introduced by Cambridge in early 1922.



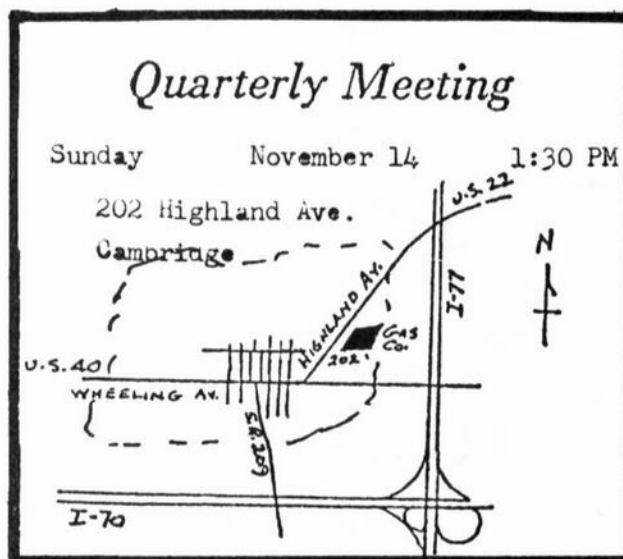
779-14'
Etched "Dragon"

These two etchings were used in 1922 on the brand new Azurite in a variety of colors which included black, green, gold and spun silver (marked Sterling). It seems that as new glass colors were introduced, these etchings were added to them. It is reasonable to assume that they were used on all opaque colors as well as the pastels and crystal.


With all the pieces that were made it would seem reasonable to believe that there would be more than ample for collectors -- but this just does not seem to be the case.

The following is a listing for your reference in studying these elusive etchings: Bennett's Color Book pages 19, 23 and 39; Welker's Color Book I plate 4; Welker's Color Book II plates 5 and 7; and Welker's Catalog Reprint I pg. 90. Our own 1930-1934 Catalog Reprint page 50 shows the vase shown at left and of course you can see a few pieces in the Bennett Museum in Cambridge, Ohio.

Keep in mind that other companies made similar etchings - so be sure to do your homework before going out and investing a large sum of money. To our knowledge, the etchings always appear on the item three times and the eyes of the Dragon are red. --- HAPPY HUNTING!



MRS. ROBERT DARROW --- 55 HINSTON RD. --- WOBURN, MASS. 01801

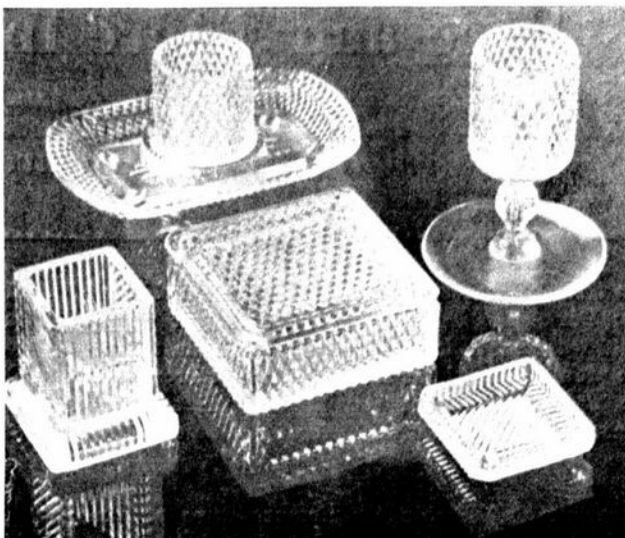
- | | |
|--|---|
| 1. Crystal 9½" #3500, Rose-point bowl (W1-41) ----- \$ 55.00 | 11. Emerald Green 7-pc. Ball Cordial set/5 cordials #3400/1341/Farber Tray ----- \$ 22.00 |
| 2. Ebony Scottie Cocktail shaker, #1020-D/987-S (NCC-31-27) ----- 75.00 | 12. Emerald Green 4-pc. Smoke set-Seashell pattern(W1-16)- 38.00 |
| 3. Ebony 3-pc. salt & pepper set P361 (W1-16) ----- 15.00 | 13. Emerald Green 6oz. #3400 ftd. sugar & cream (NCC-76) ----- 22.00 |
| 4. Crown Tuscan Flying Lady center bowl (B-15-2-3) ----- 160.00 | 14. Apple Green, 7½", Decagon plates  (NCC-15) ---- ea. 2.50 |
| 5. Crown Tuscan 14" Floral decorated Torte Plate (scarce)- 98.00 | 15. Amber 10" bud vase, gold etched #743 (NCC-51) ----- 17.00 |
| 6. Royal Blue, 8½ oz. Nautilus jug (NCC-34-1) ----- 45.00 | 16. Crystal, 6 oz. Pristine tall sherbet (W2-48) ----- 5.00 |
| 7. Royal Blue vase 18". Like #1299 - Crystal Key stem (W1-50) ----- 100.00 | 17. NearCut Feather cake salver (W2-105) ----- 30.00 |
| 8. Royal Blue 12" vase (B-18-3-1) ----- 35.00 | 18. NearCut Feather 7½" bowl --- 20.00 |
| 9. Amber Ball Jug, 80 oz. (W1-22) ----- 20.00 | 19. Emerald Green, #3400 pitcher in Farber holder/3 unusual jar type tumblers in Farber holders/Farber tray ----- 55.00 |
| 10. Emerald Green Ball Jug, 80 oz. (W1-22) ----- 25.00 | 20. Crystal Ball stopper for 6 oz. oil ----- 5.00 |

ALL ITEMS MINT ----- POSTAGE AND INSURANCE EXTRA

Send SASE for reply or return of checks

SMOKERS' ACCESSORIES

Brightly New



China, Glass & Lamps --- September, 1935

7

Classified

WANTED: CAMBRIDGE Rock Crystal Engraved - Wedding Band on #3109 stem - need wines, cordials and sherbets. Also Lynbrook and Tempo Rock Crystal engraved service pieces. Cambridge Royal Blue engraved service pieces. Crystal Nude stem cigarette boxes, comports and cordials. Please contact: Beverley Hanson, 17352 Vinewood Ave., Tustin, California 92680 - Phone: 714-544-1554

FOR SALE: NUDE STEM table goblets. Amethyst. \$45 each. Larry Hughes, R.D.#5, Northgate Addition, Cambridge, Ohio 43725 - Phone: 614-432-7823

FOR SALE: NCC BUMPER STICKERS. 50¢ each or 3/8¢. Send large SASE: Cambridge Squares, P.O. Box #416, Cambridge, Ohio 43725

In the tradition of Early American glassware design, the Mount Vernon shape is outstanding. To the many useful and attractive items, we have added some beautiful new pieces for followers of Lady Nicotine.

They are hand made and finely finished by skilled American workers.

