

Cambridge



Crystal Ball

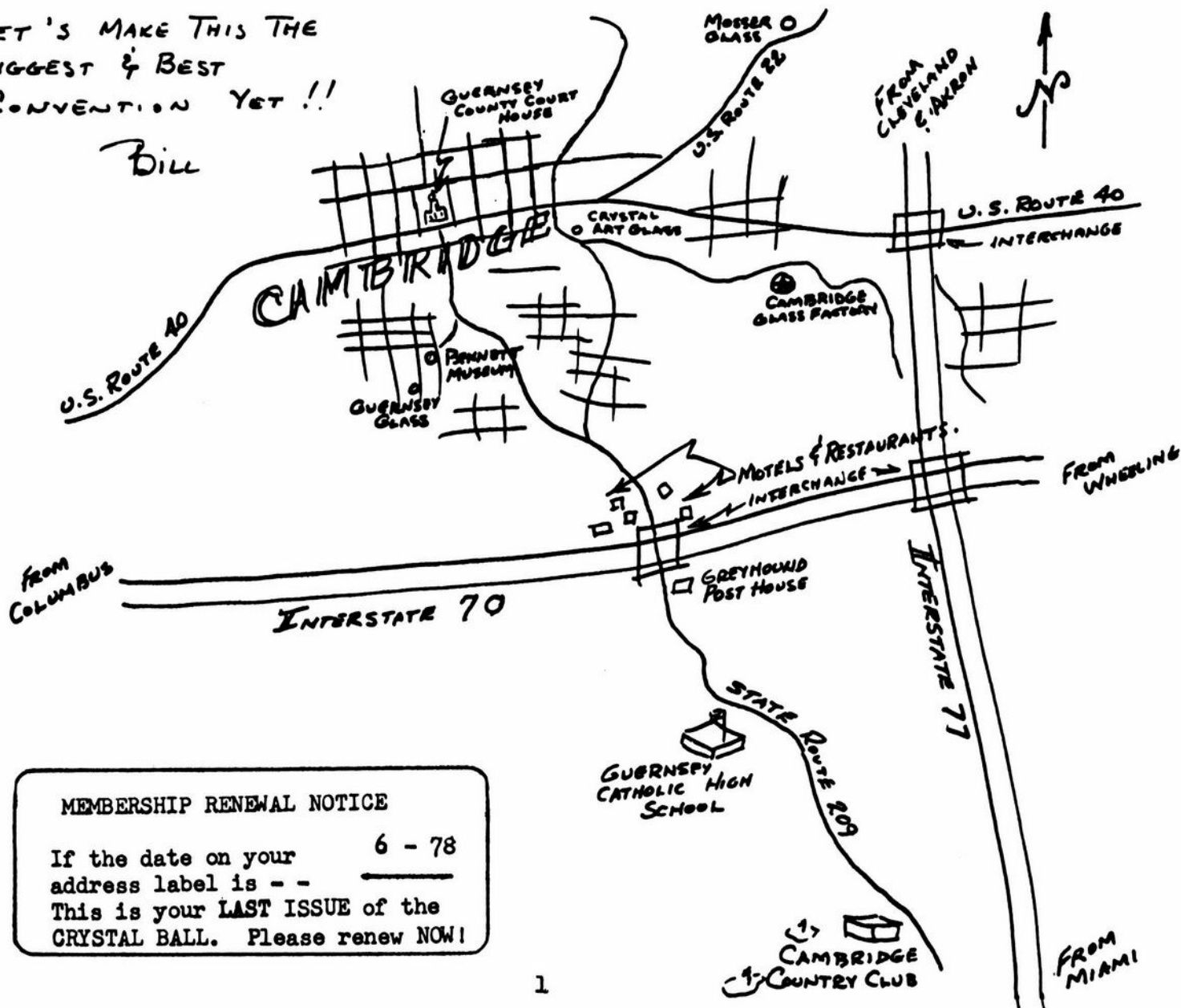
ISSUE NO. 62

JUNE 1978

Published monthly by the National Cambridge Collectors, Inc.
To encourage and to report the discovery of the elegant and boundless product
of the Cambridge Glass Company, Cambridge, Ohio

LET'S MAKE THIS THE
BIGGEST & BEST
CONVENTION YET !!

Bill



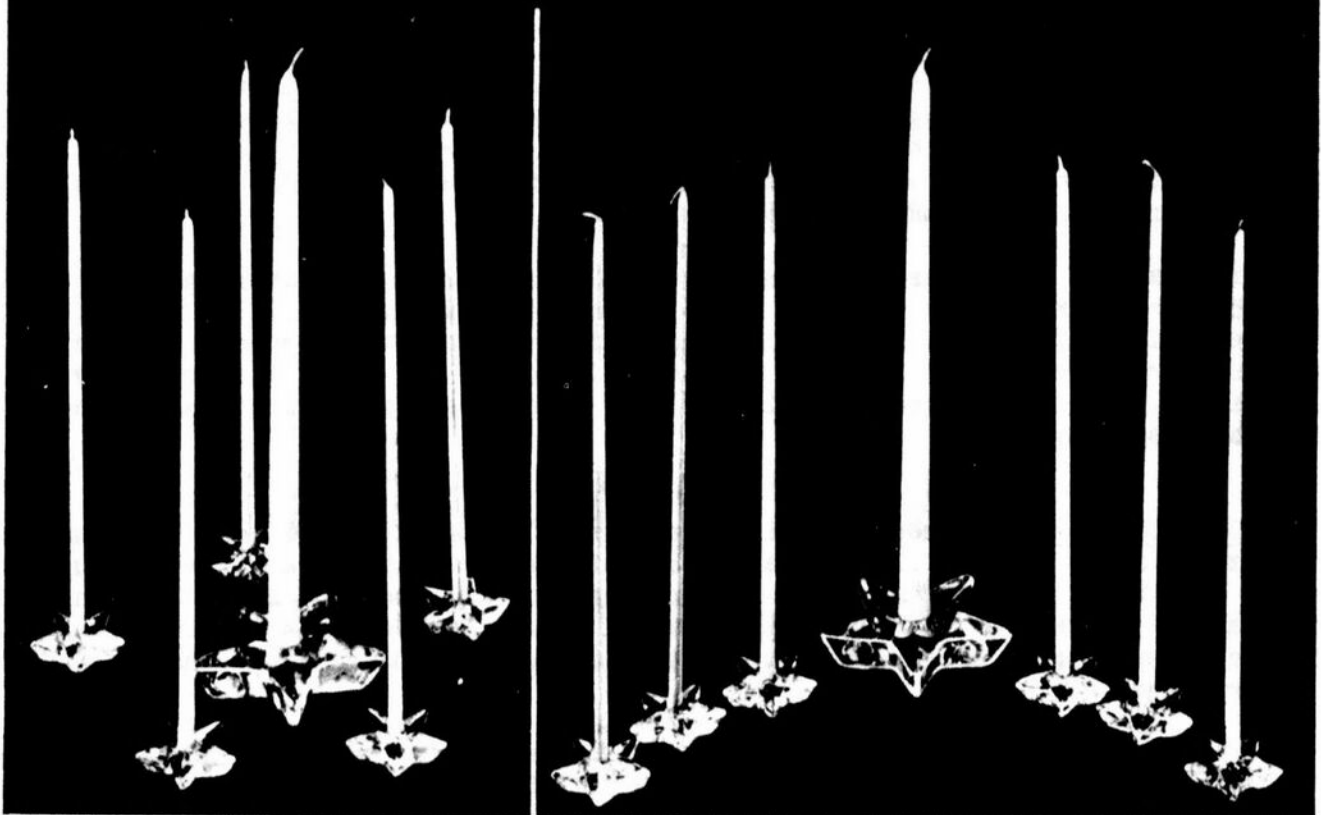
MEMBERSHIP RENEWAL NOTICE

If the date on your address label is -- 6 - 78
This is your **LAST ISSUE** of the
CRYSTAL BALL. Please renew NOW!



STAR CANDLEHOLDERS

JANUARY 1, 1940



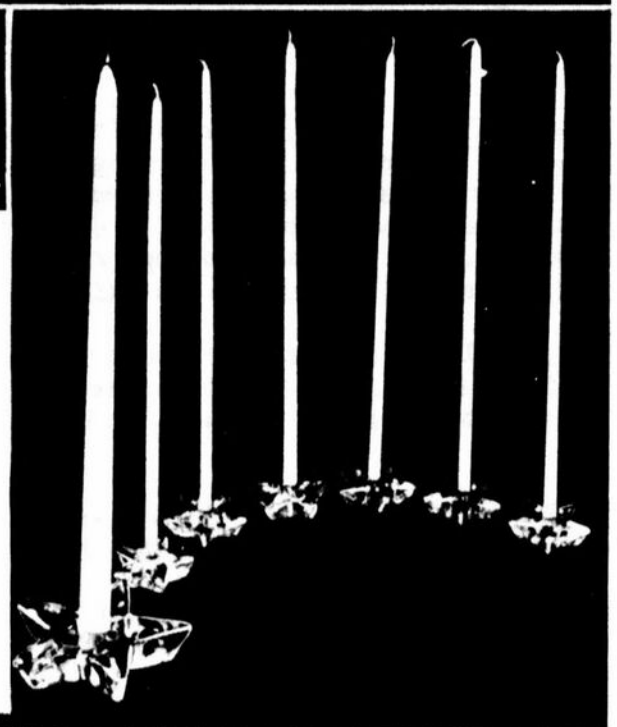
These Candleholders, molded in the shape of a Star, are attractive in any setting and for any occasion.

The Stars are made in Crystal and Moonlight. Almost any color scheme may be arranged by using various colors of Candles.

The large and medium sizes hold the regulation size Candle.

The small size is made to hold the new small diameter taper Candle.

Many interesting and novel arrangements may be made by using all of one size or a combination of the various sizes. One or two of the large or medium size may be made the center of a grouping of the small ones. The larger sizes may be used in the center of the table with rows of the small ones to the corners of the tables or with a small one at each plate. The hostess will delight in planning new arrangements with the Stars and Candles.



Cambridge, Ohio - - - U. S. A.

reflections —

by Charles A. Upton
NCC's First President 1973-74

WHO ARE WE? We are a relatively large group of people from forty different states, and as many, if not more, varying backgrounds. Our nationalities differ, as do our social, economical, intellectual, occupational and political interests, beliefs and goals. Yet, above all of these differences, we share one common interest, and that is the collecting and preservation of CAMBRIDGE GLASS!

"Collectoritis" is the word commonly used to describe the malaise with which we all seem to have been infected. Once it gets a hold on you, it is all but impossible to cure. Very few of us desire a cure anyway, since it is a truly enjoyable disease, a "hypochondriac's dream" so to speak! It has little or no after effects (except you may become financially embarrassed from time to time), and when it is happening to you, you usually always enjoy it!

WHERE DID WE COME FROM? Sometime during the year 1970, the product of the Cambridge Glass Company began to spark some interest at Antique Shows and Flea Markets around the country. As time went on, more and more people came to recognize it as being a truly high quality glassware that the public still liked, but could no longer purchase in their local department store. This created a demand and subsequently Cambridge Glass collectors came into being!

The "new-born" collectors began to "search" and the suppliers began to "hunt-out" this lovely glassware from every part of the country. Slowly at first, and then with more vigor, Cambridge Glass began to show up on sale tables, and dealers everywhere began to recognize the name "Cambridge". The old law of "supply and demand" was once again in action.

In the Fall of 1972, at an Antique Show in Columbus, Ohio, a small group of four or five people, interested in obtaining more knowledge of this fine glassware, determined that a National Cambridge Collectors club should and could be established. The first organizational meeting of this new Club was held March 5, 1973 in Cambridge, Ohio. The first Board of Directors were appointed, the Constitution and By-Laws were adopted and the first issue of the Cambridge CRYSTAL BALL was printed in May, 1973.

We were, at last, an incorporated organization, created for the purpose of establishing and maintaining a permanent Museum in Cambridge, Guernsey County, Ohio, for the study and preservation of the elegant and boundless product of the Cambridge Glass Company.

WHAT HAVE WE ACCOMPLISHED? In the last five years, yes count them, the foundation has been laid and the ground work has taken place in this organization. These years have had their "ups and downs" as in any new organization. However, the future years are ahead of us, for growing and for making the past five years worthwhile. Our accomplishments have been many and we have every reason to feel pride and satisfaction in what we have done thus far. But we still have a ways to go before our goals will be reached.

Our first endeavors as a National organization included participation in a Flea Market and setting up window displays of Cambridge glass in several Cambridge stores, during the Guernsey County Centennial Celebration in August, 1973. From these humble begin-

nings we have grown into the promoters of our own Antique Shows and "All Cambridge Glass" Auctions. We entered the publishing field in 1976 when our first Catalog Reprint 1930-34 came into being. This year our second effort, Catalog Reprint 1949-53 is soon to be a reality. This past year we became involved with the production of glassware by presenting the first of what is hoped will become a series of "Commemorative" issues. This effort proved to be quite successful.

These accomplishments all represent forward progress and we are now nearing the realization of our ultimate goal!

WHERE ARE WE GOING? We hope that this will be the year of the birth of the "Cambridge Glass Museum". We feel that the Chairman of this Committee is determined enough in his work to bring this dream into reality. This is a giant job and one to be proud of when fulfilled. However, this is not a job for our Museum Chairman alone. We must all look forward with a particular sense of determination, because the job ahead of us is even greater than the job we have accomplished thus far.

Henceforth, we must channel our efforts in two directions. One very large effort will be the enormous task of finding a suitable location for our Museum. This accomplished, there will be many details to be taken care of before it will be open for public inspection. Of course, the second effort must be that of continuing to operate our Club in the professional and business like manner that has been established. This will require continued growth in our membership, along with the enlistment of additional and capable leadership.

The words "establish" and "maintain" are the two key words in our Constitution. We are close to being "where we are going" and we should be "established" in our new home in the not too distant future.

WHAT WILL WE DO WHEN WE GET THERE? The word "maintain" will have to take on new meaning for many of us. Webster says it means "to support, sustain and uphold". Think on these words for awhile and let us ask ourselves just what our part will be in fulfilling this part of our Constitution. We, as members, will be responsible for the physical care of this establishment. We will not be able to sit back and depend on the "other guy" to do it all.

Once our Museum has been established, the roads we can follow will be endless. One definition supplied to us by Webster describes a Museum as "a building, room, etc. for preserving and exhibiting artistic, historical, or scientific objects" and also as "a place for study". We will want to incorporate the display, preservation, study and research into our Museum as quickly as possible, once we have obtained a physical structure.

When the appropriate time arrives, many donations will be needed, and we feel sure they will be forthcoming. There are many ways of donating to an organization such as ours. Donations of glassware, research materials, and of course financial assistance will always be needed. But the donations of time, talent and effort, are the donations that serve as the very foundation upon which this organization is built. Without our many members and their willingness to give of themselves, we cannot and will not exist!

We have managed to come a long way in five short years ---- we still have a long way to go!

Cambridge Connoisseur

by Doris Isaacs

When I heard that a local Study Group was being formed, I was happy to learn that the membership had not been filled. I was not sure I could get my husband Roy interested in glass, but I was sure going to try.

Prior to our moving to Cambridge he had used his spare time hunting, fishing and trapshooting, and his collecting had been limited to guns and knives.

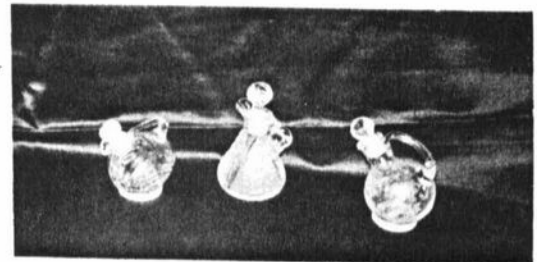
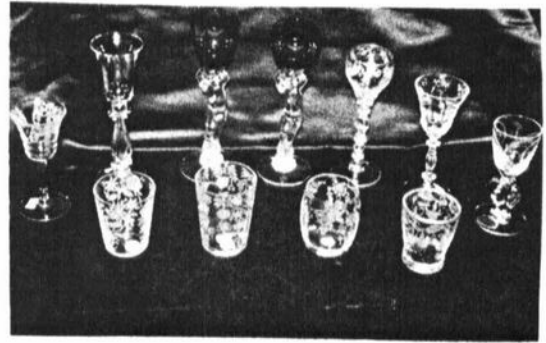
I did have a couple of things going to my advantage though! We had always tried to share each others interests, and family illness had necessitated cutting out most of our Scouting and Community related activities. When we finally had some free time, we had started attending Antique shows and auctions with a friend, and Roy enjoyed these.

He accompanied me to the first Study Group meeting (Cambridge Squares), dragging his heels all the way. For a few months there was no noticeable change in his attitude, and I thought I was losing ground. Then he decided he would pick up an occasional piece in different patterns and etchings so he would remember them. Soon he started saying to friends, "Come over, I'll show you MY Cambridge glass!"




ROY ISAACS AND SOME OF HIS GLASS

That is a child's toy Colonial candleholder in his hand and a child's Colonial butter dish in front of his watch.





Roy has confined his collecting to small pieces that are colored and/or etched, when available. He replaces plainer pieces with decorated ones when possible, but still his collection now numbers nearly 200 pieces. Although he says his first choice is stemmed cordials, he never passes up a reasonably priced whisky, butterfly, demitasse cup and saucer, etched nut cup, cruet, etc.

One set that he is particularly proud of started with the purchase of a crystal demitasse cup with satin or frosted bands and handle. It is marked with the small , has most of the original paper label and the original stock label with this information on it, "3500/151/925/1327, 3-pc. A.D. (after dinner) Set, Yukon \$22.50". (see set at Roy's right arm in photo) Last summer he purchased the #1327 crystal vase type cordial with frosted foot and band around top, at the Auction of a former Cambridge Glass Company employee. Then he kept saying "now I need the tray". We found the tray in a local antique shop. It has the #3500 Gadroon edge and is all crystal.



After this past winter, he is all set to start searching again and as any of the Cambridge Squares can tell you, he doesn't need any coaxing to get him to a show, auction, or antique shop. He has taken over most of my breakfront for his collection, and Oh Yes,

- - Come over, he'll show you HIS Glass!



EDITOR'S NOTE: Roy, Doris and their daughter Karen are all avid Cambridge Collectors and have belonged to NCC since 1975. Roy is employed by NCR as Manager, Product Quality Engineering.



The Cambridge Glass Company



Virginian



No. 281—7½ in. 3 pc.
Mayonnaise Set



No. 278—6 in. 3 pc. Mayon. set



No. 671 Ice Tub with chrom. long



No. 430—12 in. Flared Bowl
Also
No. 426—11 in. Flared Bowl



No. 407—8 in. Nut Bowl
Also
No. 405—7 in. Nut Bowl



No. 431—12 in. Crimped Bowl
Also
No. 427—11 in. Crimped Bowl



No. 315—6 in.
Candy Box & Cover



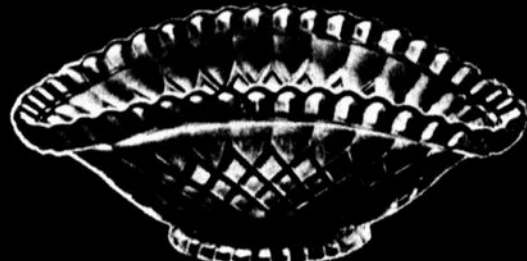
No. 382—12 in. Oval Bowl



15 pc. Tom & Jerry or Punch Set
1—No. 478—12 in. Bowl
1—No. 170—16½ in. Plate
1—No. 1402/111 Ladle
12—No. 488—5 oz. Cups



No. 428—10½ in. Salad Bowl
Also
No. 425—9½ in. Bowl



No. 642—13 in. Basket
Also
No. 641—12 in. Basket

JANUARY 1, 1940

Cambridge, Ohio - - - U. S. A.



The Cambridge Glass Company



JANUARY 1, 1940

Virginian



No. 202—6 in. 2 Compt.
Relish 1 Hdl.



No. 207—8½ in. 3 Compt.
Celery & Relish



No. 203—6 in. 3 Compt.
Relish 1 Hdl.



No. 211—10 in. 3 Compt.
Celery & Relish



No. 493 2½ in. Candlestick



No. 502—5½ in.
2 Holder Candlestick



No. 498—6½ in.
Candlestick



No. 507—7 in. Candelabrum
(w/No. 23 Bob. & 5
No. 1—2½ in. Prisms)



No. 499 7½ in
Candlestick w/1 prism



No. 512—6 in. 2 Holder
Candelabrum w/No. 27 bob.
& 12 No. 5 prisms



No. 501—6 in.
2 Holder Candlestick



No. 509—6 in. 2 Holder
Candelabrum (w/No. 27 bob.
& 12 No. 5 Prisms)



No. 511—6 in. 2 Holder
Candelabrum (w/No. 23 bob.
& 10 No. 5 Prisms)

Cambridge, Ohio - - - U. S. A.



The Cambridge Glass Company



Virginian



No. 253 Sugar & Cream



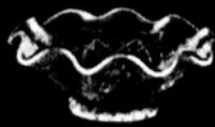
No. 332—6 in. Bonbon, 1 Hdl.



No. 319—5 in. Plate



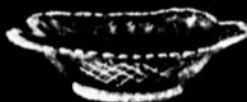
No. 318—5 in. Bonbon, turned-up edge



No. 316—5 in. Bonbon, crimped



No. 317—5 1/2 in. Basket



No. 322—4 in. Jelly



No. 323—4 in. Sq. Basket



No. 324—4 in. Sq. Bonbon



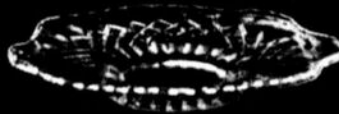
No. 150—5 in. Plate, Ftd.



No. 327—5 in. Jelly



No. 328—5 in. Sq. Basket



No. 151—6 in. Plate, Ftd.



No. 422—4 1/2 in. Ivy Ball



No. 350—9 in. Ftd. Plate or Comport



No. 465—7 1/2 in. Comport



No. 466—7 1/2 in. Crimped Comport



No. 464—6 in. Deep Comport

JANUARY 1, 1940

Cambridge, Ohio - - - U. S. A.

MEMBERSHIP REPORT

by Jo Barstow

Convention time is drawing near and we are running out of time for this year's membership drive!

We set our goal at the beginning of this membership year at 100%. It was undoubtedly an unrealistic goal, but WHY NOT set our sights high? We will not reach this goal this year, but we are within reach of a 50% increase if we will all pull together these last few days before Convention! Won't you please HELP by bringing in just one more member!

Thanks to all of you who have helped thus far and to all of you who will help these last few days. Our final report will appear in the July or August CRYSTAL BALL.

Looking forward to meeting you at the Convention!

On the Mend

We are happy to report that our President Bill Smith is recuperating at home after undergoing Heart surgery (quadruple bypass) on May 5th.

He wishes to express "heartfelt" THANKS to the many of you who expressed concern for both he and Phyllis during this trying period in their lives.

The cards, the flowers, the visits, and most of all the Prayers and the warm expressions of friendship and caring have meant so very much to their entire family.

His Doctor reports that he is doing exceptionally well and if this continues he will most definitely be seeing you at the Convention!

REMINDER

Please be sure to send your Convention Advance Registration form in before the deadline of June 10th. It is very important that we receive these in order to make proper preparations for everyone! THANKS!

FIFTH ANNUAL CONVENTION

National Cambridge Collectors, Inc.

June 23, 24, 25, 1978

SCHEDULE OF EVENTS

CAMBRIDGE, OHIO

FRIDAY, June 23rd

- 1:00 PM - 4:00 PM - REGISTRATION - Knights Inn Hotel Lobby
S. R. 209S (off I-70), Cambridge, Ohio
- 6:00 PM - 9:00 PM - CAMBRIDGE '78 ANTIQUE SHOW & SALE
PREVIEW
Guernsey Catholic Central High School
- 9:30 PM - - After Show "GET ACQUAINTED" Party
Cambridge Country Club
(Free Hors D'Oeuvres and Pay Bar)

SATURDAY, June 24th

- 8:00 AM - 10:30 AM - REGISTRATION - Cambridge Country Club
- 8:30 AM - 10:30 AM - CONTINENTAL BREAKFAST
Guest Speaker - David B. Henkin
Vice-President N.C.C.
Topic - "Cambridge Confusables"
Film - "The Crystal Lady"
- 11:00 AM - 6:00 PM - CAMBRIDGE '78 ANTIQUE SHOW & SALE
- Visit Display Rooms at Show
- 1:00 PM - - TOUR - Mosser Glass Company
Hosts: Larry Hughes and Bill Turner
- 3:00 PM - - TOUR - LaFlo Glass Company
Hosts: Larry Hughes and Bill Turner
- 6:30 PM - 7:30 PM - COCKTAIL HOUR - Cambridge Country Club
(Pay Bar)
- 7:30 PM - - N.C.C. ANNUAL CONVENTION BANQUET
(Roast Prime Rib of Beef)
Guest Speaker - Gwen Shumport
Feature Editor for the "Glass Review"
Topic - "Treasures In Glass"

SUNDAY, June 25th

- 9:00 AM - - BUFFET BREAKFAST - Cambridge Country Club
N.C.C. Annual Business Meeting
"Show and Tell" after meeting
- 12 Noon - 6:00 PM - CAMBRIDGE '78 ANTIQUE SHOW & SALE
- 4:00 PM - 6:00 PM - DISPLAY ROOMS WILL BE CLOSED
(Pick up Display Glass)

STUDY Club News

continued from page 2

MAIL ORDER BID

JAPONICA GLOBE VASE

6" Royal Blue with Moonstone Interior
Apple Blossom Pattern - Museum Quality

Starting Bid \$375

BIDS DUE JULY 1, 1978

FOR SALE

SEASHELL PATTERN

Crown Tuscan

9" 3-toed bowl ----- \$ 69.00
3" 3-toed ashtray (2) ea. ----- 12.00
3-3/4" x 4-3/4" box w/cover ---- 36.00
ftd. candy box w/cover ----- 59.00

Mandarin Gold

3" 3-toed ashtray ----- 10.00

Crystal

2 1/2" x 3 1/2" Caprice cigarette box
w/cover ----- 12.00

CROWN TUSCAN

3 pc. console set (B-14) ----- 120.00
Single candelabrum as above ---- 39.00
4-toed oval bowl, 12" ----- 39.00

EBONY

3-ftd. 6" candy box w/lid, gold
encrusted Wildflower (WI-18) --- 59.00
36oz. pinch decanter w/crystal
stopper ----- 37.00

HELIOTROPE

11 1/2" ftd. bowl ----- 39.00

CRYSTAL

4-toed bowl, 12", gold encrust-
ed Chantilly ----- 59.00

AMBER

Chromium decanter set tilt jug
w/stopper and 6 glasses ----- 58.00

CARMEN

Mt. Vernon 3oz. ftd. tumbler ---- 12.50

POSTAGE AND INSURANCE EXTRA!

Robert J. Dial

Box 75, Lake City, Ca. 96115
Phone 916-279-2365

Upon returning to the Patterson's, items on our "Show and Tell" table were discussed. There was a lovely swan in crown tuscan with Gardenia decoration, a pitcher with an intricate design and the name Ethel cut into it, a crystal Chelsea sherbet, a milk glass Dresden Lady, a 5" flower frog with pat. date in emerald green, a pink sugar shaker, and a crown tuscan kitchen slipper.

Information was given by a couple of Cambridge Square members on a recent out of State auction they had attended. The owner described the items that went up for bid with the following results. A small Caprice open salt (made by Guernsey Glass Co.) sold as pink slag for \$7; a Cambridge prism sign (made in Lore City, Ohio, cost new was about 50¢) was described as rare porcelain and brought \$17.50. In stark contrast to these two items, an original oval Cambridge sign in crystal with frosting brought only \$27.50; and a Cambridge Factory paperweight with gold and etched "Group 7 - Ohio Bankers, Cambridge, Ohio, Oct. 12, 1922" sold for \$15. Our lucky members purchased the last two items for their personal collection. It was suggested that the Auctioneer is probably still wondering why his Cambridge buyers didn't bid even once on the salt dip and "porcelain" sign!

We are looking forward to Dave Rankin's talk on "Cambridge Confusables" at the Convention Saturday morning breakfast. This should be a most enlightening program.

Submitted by Doris Isaacs

Auction Deferred

It was decided by your Board of Directors that our annual Auction held in August each year will be deferred until a later date.

Time, place, etc. will appear in the CRYSTAL BALL as soon as plans are finalized.

- Classified -

Sorry 'bout that

WANTED BY COLLECTOR: TALLY-HO #1402/29 - 17½" Cabaret Plate in royal blue. Please state condition and price. Write: Jan Kirkwood, 2209 N. Glenbrook Dr., Garland, Tx. 75040.

FOR SALE: CAMBRIDGE Caprice #70 candleholders (B-48-2-4), moonlight blue and frosted, \$35 pr.; Draped Lady, 8½", in pink \$65, and in crystal \$35; Rose Lady, crystal (slight roughness on bottom of base) \$50. Write: Eagle Point Antiques, P.O. Box 157, Oakville, Wa. 98568 - 206-273-7382.

FOR SALE: CAMBRIDGE Georgian tumblers (6), 12 oz. \$60 plus postage and insurance. MINT! Helen Critchfield, Boynton, Pa. 15532.

WANTED: TWO Ice Teas in Elaine pattern by Cambridge. State price. Contact: Louise L. Wood, 338 Beach Island Ave., Route #2, No. Augusta, S.C. 29841.


Display Award

The 1978 Display Room Committee wishes to THANK all of the members who have expressed an interest with their generous offers of glass for this year's display.

We would also like to take this opportunity to announce that the Award for the best Flower Arrangement will be a \$25 Savings Bond.

Vickie Wollenhaupt
Joy McFadden
Larry Hughes
Charles Upton

As many of you know, our new 1930-34 Price Guide for 1978 has been delivered and many of you have already received your copy.

It should be noted that there has been a small error discovered. On page 2, fourth paragraph, second line, half way over, you will find a blank space. A  should be inserted in that blank.

JUNE 15, 16, 17, 18 1978



HEISEY COLLECTORS OF AMERICA INC.


AT NEWARK HIGH SCHOOL GYM

HEISEY GLASS DISPLAY AT THE YWCA NEWARK, OHIO

THURSDAY, JUNE 15, 1 P.M. - 9 P.M.
FRIDAY, JUNE 16, 1 P.M. - 6 P.M.
SATURDAY, JUNE 17, 1 P.M. - 9 P.M.
SUNDAY, JUNE 18, 1 P.M. - 6 P.M.

60 QUALITY DEALERS FROM COAST TO COAST FEATURING HEISEY SELECTED ANTIQUES

DONATION \$1.75
25¢ off with this ad.



EIGHTH ANTIQUE SHOW AND SALE

BENEFIT: THE NATIONAL HEISEY MUSEUM

CAMBRIDGE '78

3rd ANNUAL

National Cambridge Collectors

ANTIQUES show & sale

FRIDAY 6-9 PM, SATURDAY 11 AM - 6 PM, SUNDAY Noon - 6 PM

JUNE 23, 24 & 25

GUERSEY CATHOLIC CENTRAL HIGH SCHOOL
St Rte 209S CAMBRIDGE OHIO



Chmn. G R LANDMAN POBOX 416 CAMBRIDGE OH 43725

American Glass Animals

A to Z'

by Evelyn Zemel
Edited by Ada Wilson



\$18.00
Post Paid

IT'S READY
FOR MARCH DELIVERY

- ★ 300 Pages
 - ★ 25 Company Chapters
 - ★ 285 Photos & drawings
 - ★ Articles by Leading Glass Authorities
 - ★ Large Photos
- With easy to read text

ALL THE ANIMALS FOR
THE FIRST TIME
UNDER ONE COVER!!

★★★★★★★★★★

\$18.00 Post Paid

Please send check or
money order to:
A. TO Z Productions
230 NW 126th St.
North Miami, FL 33168



The present is the period when the future
pauses for a short while before becoming
the past.

MOTEL INFO

KNIGHTS INN --- Registration Headquarters!
----- Phone - 614-432-6391

HOLIDAY INN ----- Phone - 614-432-7313

RAMADA INN ----- Phone - 614-432-5691

TRAVELODGE ----- Phone - 614-432-7375

SPIRIT OF 76 INNS --- Phone - 614-432-3581

Exit at S.R.209 off I-70. Mailing address
for all motels - Cambridge, Ohio 43725

SPRING VALLEY CAMPGROUND - S.R. 209 South,
Cambridge, Ohio 43725 - Phone-614-439-1091

DEALERS



DIRECTORY

<p>ANTIQUÉ ALLEY 24815 Broadway Bedford, Ohio 44146 216-232-7739 ---- Marie Spagnola CAMBRIDGE GLASS ROYAL DOULTON</p>	<p>BENICIA ANTIQUE SHOP 305 First Street Benicia, California 94510 OPEN 11 AM - 5 PM Closed Monday</p>	<p>BUSY BEE ANTIQUES 1044 Dublin Road Columbus, Ohio 43215 Robert Cain 614-486-8320 CAMBRIDGE ---- BROWSER'S WELCOME</p>
<p>CHURCH STREET ANTIQUES 6 Church Street Boston, Massachusetts 02116 George or Frank --- 617-426-1048 CAMBRIDGE, HEISEY, GENERAL LINE</p>	<p>Z. E. LOPES - 707-745-0978 VISIT HISTORIC BENICIA and its 28 shops Off Interstate #80 ----- ----- North of San Francisco</p>	<p>D & D ANTIQUES 184 East Kossuth Street (GERMAN VILLAGE) Columbus, Ohio 43206 DICK SLIFKO ----- 614-443-6020</p>
<p>SILVERPLATE MATCHING SERVICE Patterns from 20's, 30's, 40's Send your WANT list and SASE D. A. Nelson - 1546 W. Farwell Chicago, Illinois 60626</p>	<p>GREEN ACRES FARM 2678 State Route 310 North Pataskala, Ohio, 43062 Sat. & Sun. 1-6 PM ----- W. Bryan CAMBRIDGE & HEISEY - 614-927-1882</p>	<p>FINDER'S KEEPER'S ANTIQUES P.O. Box 303 P.O. Box 16023 Dayton, O. Columbus, O. 45401 43216 513-254-2937 614-965-1906 SPECIALIZING IN CAMBRIDGE GLASS!</p>
<p>SWISS HILLS COLLECTIBLES Mary & Wilbur Henderson 303 Guilford Avenue Woodsfield, Ohio 43793 Shows Only -- 614-472-1133 SPECIALIZING IN CAMBRIDGE GLASS!</p>	<p>HERITAGE ANTIQUES Rt. #5, Cambridge, Ohio - 43725 614-439-3241 Take N.8th St. Rd. (County Rd. #33) TURN LEFT AT RAILROAD TRACK</p>	<p>HOBBY HOUSE ANTIQUES Rt. #1, Cambridge, Ohio - 43725 614-432-6971 - Frank & Lena Take Rt. #209 W. From Cambridge To RT. #658 - NORTH 1½ MILES</p>
<p>HOFF - HAVEN ANTIQUES 21 Half Moon Lane Tarrytown, New York 10591 Shows-Mail-No Lists-914-631-2140 CAMBRIDGE, ROSE IN SNOW FOSTORIA</p>	<p>GEORGE HOFFMAN ANTIQUES 129 South 4th Street Newark, Ohio 43055 --- 614-345-8550 ---</p>	<p>D'MARIE'S ANTIQUES US Rt. 1 - just South of Rt. 606 Thornburg, Virginia 22565 703-582-6220 ----- Jim Rankin OPEN EVERY DAY 10 AM to 6 PM</p>
<p>OUR GLASS ANTIQUES 20th CENTURY COLLECTIBLES featuring CAMBRIDGE GLASS Paul & Ginny Henderson - Box 134 Iselin, NJ 08830 -- 201-283-3181</p>	<p>OLD TOLL GATE ANTIQUES Route #5, Box 7X Milan, Illinois 61264 SPECIALIZING IN HAVILAND CHINA MATCHING SERVICE</p>	<p>YOU CAN ADVERTISE YOUR ANTIQUÉ SHOP HERE! 1 inch -- \$6.00 for 6 months</p>
<p>S & J ANTIQUES 5616 Hensel Woods Road Gahanna, Ohio 43230 Sue & Jack Rettig - 614-855-1711 CAMBRIDGE GLASS OUR SPECIALITY</p>	<p>Use Schleigers book numbers or send saucer for pattern match. SASE APPRECIATED Marie Baker ----- 309-787-2392 GENERAL LINE OF ANTIQUES</p>	<p>WOLFE'S GLASS EMPORIUM 330 Woodlawn Avenue Cambridge, Ohio 43725 OPEN BY APPOINTMENT - JOHN WOLFE 614-432-2590 OR 614-855-7645</p>
<p>A. SPRINGBORN P. O. Box E. G. #962 Melbourne, Florida - 32935 Shop #34, Webster, Florida OPEN EVERY MONDAY 305-254-7439</p>	<p>THE GLASS CUPBOARD 39 Shire Oaks Drive Pittsford, New York 14534 Marcia Ellis 716-586-7596 CAMBRIDGE ONLY --- SASE FOR LIST</p>	<p>M & M ANTIQUES & COLLECTIBLES 310 N. Main - Box 417 Canton, Kansas 67428 The Martin's ----- 316-628-4705 SPECIALIZING IN CAMBRIDGE GLASS!</p>
<p>ROLLING ACRES ANTIQUES C. R. #33 (8th St. Rd.) Cambridge, Ohio 43725 Sandy Jenkins ----- 614-432-2570 CAMBRIDGE & GENERAL LINE ANTIQUES</p>	<p>YOU CAN ADVERTISE YOUR ANTIQUÉ SHOP HERE! 1 inch - \$ 6.00 for 6 months</p>	<p>JEWELL'S TREASURE BOX 6141 No. State 60, NW McCormelsville, Ohio 43725 (mail order or shows only) STERLING & PLATE FLATWARE Specializing in Older Patterns</p>

National Cambridge Collectors, Inc.
PRESENTS

Fine Handmade

TABLE GLASSWARE

by

The Cambridge Glass Company

CAMBRIDGE, OHIO

1949 - 1953

A 300 PAGE CATALOG REPRINT - HARDBOUND - FULLY INDEXED

FEATURING predominately unmarked patterns such as CAPRICE, CASCADE, CAMBRIDGE SQUARE, HEIRLOOM; etchings that include ROSEPOINT, CHANTILLY, CANDLELIGHT and many others; over 60 ROCK CRYSTAL ENGRAVED patterns; EBONY, EBONY and MILKGLASS. Also includes a PRICE GUIDE.

\$14.95

JUST RELEASED

1978 REVISED PRICE GUIDE

For 1930-1934 Cambridge Catalog Reprint

\$2.00

Be among the first to receive this new information

ORDER NOW FROM

National Cambridge Collector's, Inc. (Dept. CB)
P.O. Box 416 Cambridge, OH 43725

Ohio residents add 4% Sales Tax Dealer discount on 6 or more copies

NATIONAL CAMBRIDGE COLLECTORS, INC.
P. O. Box #416
Cambridge, Ohio 43725

Postal Hike

As the Postal Service has decided to favor us with another postage increase, we would like to suggest to our members that it is not necessary to use more than one envelope when mailing several different items to our Post Office Box number.

All mail is received, sorted and sent on to the proper department or person by the Secretary, upon receipt. Please feel free to include book orders, requests for information, renewals, ballots, etc., all in the same envelope.

May we remind you also to include a SASE when requesting a reply. Remember, a penny saved is a penny that will -----

----- **BUY CAMBRIDGE!**

Janice Hughes, Secretary

FIRST CLASS MAIL