

Cambridge



Crystal Ball

ISSUE NO. 66

OCTOBER 1978

Published monthly by the National Cambridge Collectors, Inc.
To encourage and to report the discovery of the elegant and boundless product
of the Cambridge Glass Company, Cambridge, Ohio

Thoughts from the President - - - -

Last month we mentioned that we would have news for you regarding up-coming events. A complete package of the details cannot be provided at this time, but we can give you the basics and then fill in the details as the plans are completed.

First, and foremost, will be our next Quarterly Meeting. This will be held November 11, at Baker's Restaurant. This is the same location as our last November meeting. The restaurant is 14 miles West of Cambridge, on Old U.S. Route 40. Use the Norwich exit from Interstate 70. The meeting will start at 6:30 P.M. with a Social period.

This meeting will be the Kick-off for our second bookend project. The bookend that has been selected for this project is the #1124 Pouter Pigeon. The shape can be seen on page 9 of this issue. We are not sure yet what the color will be, but we are expecting it to be a beauty. The complete dinner and bookend price information will be sent to you in a flyer later this month. The prices should be very similar to those of last year.

The Program Committee, chaired by Charles Upton, is indicating that our program will be another slide presentation and that the subject will probably be candlesticks.

The next event being planned for your pleasure is another All Cambridge Auction. This

event will be chaired by Lynn Welker, and is being planned for early March. At this time we will also hold a belated February Quarterly Meeting. The exact date and location has not yet been determined. With this knowledge you can at least start saving your pennies for your purchases and you can be giving consideration to the items that you may wish to consign.

The remaining activity for this Club year will be the Show and Convention which will be held June 22, 23, and 24, 1979. A new location has been picked for these events. They will be held at the Shenandoah Inn, which is located about eight miles East of Cambridge off Interstate 70. This facility will provide us space for the Show and all Convention activities under one roof. The Inn is fully air conditioned and carpeted for your added comfort. Adjoining Motel accommodations will be available. Probably at a reduced rate for us.

We had hoped to have an announcement for you regarding a building for the Museum, but our first efforts have not been successful. We have had to fall back and regroup somewhat, and consequently this will require more time. Hopefully '78 can still become "the Year of the Museum".

Bill

MEMBERSHIP RENEWAL NOTICE
If the date on your address label is - - 10 - 78
This is your LAST ISSUE of the
CRYSTAL BALL. Please renew NOW!

CAMBRIDGE CRYSTAL BALL

Official publication of National Cambridge Collectors, Inc., a non-profit corporation with tax exempt status. Published once a month for the benefit of its members. Membership is available for individual members at \$10 per year and additional members (12 years of age and residing in the same household) at \$3 ea. All members have voting rights, but only one CRYSTAL BALL will be mailed per household.

Back issues of the CRYSTAL BALL are available to members only, at a cost of 60¢ ea. or 12 issues for \$7.

1978-79 Officers & Committee Chairpersons

PRESIDENT ----- William C. Smith
VICE-PRESIDENT ----- George W. Hoffman
SECRETARY ----- Janice Y. Hughes
TREASURER ----- Doris J. Isaacs
SERGEANT-AT-ARMS ----- George W. Hoffman
BUDGET & FINANCE ----- William C. Smith
BY-LAWS -----
CONVENTION ----- George W. Hoffman
MEMBERSHIP ----- Josephine A. Barstow
MUSEUM ----- Arnold Lynd
PROGRAM & ENTERTAINMENT - Charles A. Upton
PROJECT -----
PUBLICITY -----
STUDY GROUP ADVISORY ---- Janice Y. Hughes

1979 CAMBRIDGE AUCTION ----- Lynn Welker

CRYSTAL BALL Editor ----- Phyllis D. Smith

CLASSIFIED ADVERTISING RATES

5¢ per word \$1.00 minimum

We cannot mix type size in classified advertisements. Abbreviations and initials will count as words. Payment in full must accompany all ads.

DISPLAY ADVERTISING RATES

	Members	Non-Members
1/8 page -----	\$ 4.00 - - -	\$ 6.00
1/4 page -----	7.00 - - -	10.00
1/2 page -----	12.00 - - -	18.00
3/4 page -----	17.00 - - -	25.00
Full page -----	22.00 - - -	33.00

DEALERS DIRECTORY

1" ad ----- \$6.00 for 6 months

Cambridge CRYSTAL BALL assumes no responsibility for items advertised and will not be responsible for error in price, description or other information.

Advertising copy must be in our hands by the 15th of each month to assure publication in our next issue. Advertisements containing reproductions will not knowingly be accepted unless clearly stated.

PLEASE ADDRESS ALL CORRESPONDENCE TO

Cambridge CRYSTAL BALL
National Cambridge Collectors, Inc.
P. O. Box #416
Cambridge, Ohio 43725

PLEASE NOTIFY US IMMEDIATELY OF ANY CHANGE IN YOUR ADDRESS!

Please enclose a self-addressed, stamped envelope when requesting information!!

Club News

National Cambridge Collectors, Inc.
Quarterly Meeting
August 27, 1978
Columbia Gas of Ohio, Cambridge, Ohio

The meeting was called to order at 2:10 PM by President Smith. In attendance were 25 Club members and 8 Board members. The minutes of the June 25, 1978 Annual Meeting were read by Janice Hughes and approved. The Treasurer's report was given by Doris Isaacs showing the Club has a balance of \$2,420.13 and the Museum Fund \$30,704.61.

COMMITTEE REPORTS

BY-LAWS: No Report.

CONVENTION: Doris Isaacs reported in the absence of Chairman George Hoffman. The Convention will be held on June 22, 23 and 24, 1979, at the Shenandoah Inn, Old Washington, Ohio. The Antique Show will be at the same location, as well as Motel accommodations.

CRYSTAL BALL: Editor Phyllis Smith apologized for the delay in the July CRYSTAL BALL as she was ill after Convention. Due to numerous rules, there will not be a decrease in the CRYSTAL BALL postage.

MEMBERSHIP: Chairman Jo Barstow reported we now have 497 \$10 members, 205 \$3 members and 5 Honorary members for a total of 707. She also thanked Chet and Naomi Gamble for several new members over the past month.

PROJECT: President Smith reported he has not appointed a new Chairman yet. He also reported plans have been finalized for the Bookend project. It will be the Pouter Pigeon and the mold will be made by Mosser Glass Company and be owned by NCC, Inc. These will be available at the November Quarterly meeting in a limited amount.

continued on page 11 —

Let's Get Acquainted

by Phyllis Smith



MARGARET COHAGEN

The newest member of our Board of Directors, Mrs. Margaret E. Cohagen, has been involved one way or another with Cambridge glass almost all of her life.

Born in Cambridge, Ohio, the daughter of Leota and John Phillips, Margaret grew up in a household in which her father was an employee of the Cambridge Glass Company for many years. Cambridge glass was always in their home and was used much as we would use any new glassware today.

Graduating from Cambridge High School, she attended Cambridge Business College and has held positions as a bookkeeper as well as a Welcome Wagon Hostess. One other job that she has particularly fond memories of is the one for which she served as a special Guide for groups desiring to tour the Cambridge Glass Company. This job enabled her to become acquainted with all of the key personnel, including A. J. Bennett.

On May 29, 1936, Margaret became the bride of R. A. Cohagen, also a native of Cambridge, Ohio. They later became the parents of two lovely daughters, Dorothy and Nancy, and they now have four grandchildren. Sorrowfully, their daughter Nancy was taken from them quite suddenly this past spring.

During their years of marriage the Cohagen family found it necessary to make several moves because of R. A.'s job with the Ohio State Highway Patrol, from which he has now retired. Their last move settled them in Bucyrus, Ohio, but where ever they have lived, Margaret has always managed to keep herself involved with family and community activities.

While in Cambridge, she served on the "Y" Board, was President of the Girl Scouts, and worked as a Welcome Wagon Hostess. She also worked as a Welcome Wagon Hostess in Findlay and Bucyrus. Margaret was also Vice-President of the Cambridge Oakland P.T.A., and served as Chairperson for the Women's Division of the Hospital Drive for the Guernsey Memorial Hospital. She served as an officer of the Alpha Pi Sigma Sorority and was a member of the Mother's Club of Findlay, as well as the Vice-President of the Girl Scouts.

Margaret is a member of St. Pauls Lutheran Church and lists knitting and collecting glass as her hobbies.

Margaret and R. A. became members of NCC in January, 1975. They have both taken an interest in Club activities by attending Quarterly meetings and Conventions and Margaret served on the Antique Show committee this past year.

Their collection of Cambridge glass consists of well over 500 pieces, some of which have been in the family for over 60 years. They have many one of a kind items including a small glass basket her father had made special for a "favor" at one of her birthday parties. These were not a production item with the glass company and of course, this makes the piece very special and unique.

Margaret has a wealth of information stored in her memory, she has energy to spare, and it is felt that she is a tremendous asset to your Board of Directors.

QUARTERLY MEETING REMINDER

Be sure to mark NOVEMBER 11, 1978, on your calendar as the date you have reserved to attend the November Quarterly Meeting and Bookend Dinner - 6:30 PM. Details later!

BOOKS FOR SALE

All of the available reference books relating to Cambridge glass can be ordered directly from the Club.

Address your orders for any of the following to:

BOOKS
National Cambridge Collectors, Inc.
P. O. Box 416
Cambridge, Ohio 43725

Ohio residents please add 4½% State Sales Tax.

by National Cambridge Collectors, Inc.

1949 - 1953 CAMBRIDGE GLASS CO. CATALOG REPRINT
(300 page reprint of original catalog)
Hardbound with Price Guide \$14.95

1930 - 1934 CAMBRIDGE GLASS CO. CATALOG REPRINT
(250 page reprint of original catalog)
Hardbound with Price Guide \$14.95

1978 PRICE GUIDE
for 1930-1934 catalog reprint \$2.00

by Mary, Lyle, and Lynn Welker

CAMBRIDGE GLASS CO.
(120 pages of reprint from 8 old catalogs) \$6.95

CAMBRIDGE GLASS CO. BOOK II
(119 pages of reprint from old catalogs) \$6.95

CAMBRIDGE, OHIO GLASS IN COLOR II
(15 color plates w/ descriptions and notes) \$5.95

by Harold and Judy Bennett

THE CAMBRIDGE GLASS BOOK
(96 pages with 59 color plates)
Paperback \$8.95

1903 CAMBRIDGE GLASS CO. CATALOG REPRINT
(106 page reprint of an original catalog) \$7.50

by Charles and Mary Alice Upton

1975 PRICE GUIDE to the CAMBRIDGE GLASS BOOK
(Prices for each item in Bennett book) \$1.75

"Near-Cut" Patterns

by Phyllis Smith

There are times when one has to stop and ask one's self the question "Just where do you come up with the nerve to write an article for the CRYSTAL BALL, when you know so little about your subject matter?" and the answer is really quite simple.

A basic belief in trying to share with others what little information we have is really all the motivation needed.

This month's offering is a case in point. The page from an old NearCut catalog that is reproduced on the next page here, shows us a Pattern #2970, called Gothic. Obviously this line was sold to restaurants, ice cream parlors, and businesses that incorporated soda fountains, etc.

Evidently this was not a large line with the Cambridge Glass Company, because there is just this one page shown in the catalog. Perhaps this explains why very, very little of this pattern has shown up to date.

Like many of the NearCut patterns produced by Cambridge, this pattern could be easily confused with several of their other offerings such as their "Colonial" and "Community" patterns.

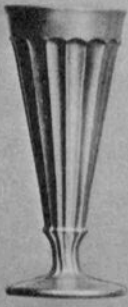
We have one piece of this pattern in our personal collection of NearCut. It is the cover for the Crushed Fruit Jar and it has a big chip on it. But, we purchased it anyway because it is Marked on the inside of the very top of the lid, thusly —

NEARCUT
D. P. APL'D FOR

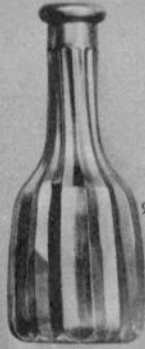
Of course we have no way of knowing if every piece in this pattern is marked or not, but since we find so many pieces in other patterns both marked and unmarked, we would doubt if this pattern would be an exception.

TRADE
"Mearcut"
MARK

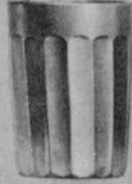
NO. 2970. GOTHIC PATTERN.—PATENTED.
SODA FOUNTAIN SERVICE.



No. 408
Grape Juice, Footed
Capacity, 4 oz.



No. 344
Phosphate or Bitters Bottle
No Tube



No. 415
9 oz. Table Tumbler



No. 415
6 oz. Water Glass



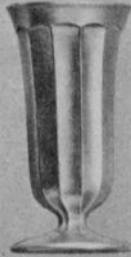
No. 391
5 oz. Footed Sherbet



No. 125
Custard, Handled
Capacity, 4 1/2 oz.



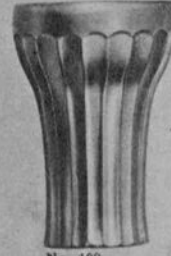
No. 392. Combination Auto Saucer
Ice Cream and Wafer Tray
Capacity, 5 1/2 oz.



No. 407
Cafe Parfait
Capacity, 4 1/2 oz.



No. 393
High Foot Auto Sundae
Capacity, 5 oz.

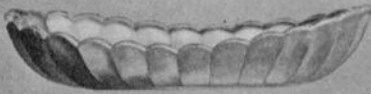


No. 409
12 oz. Soda Tumbler

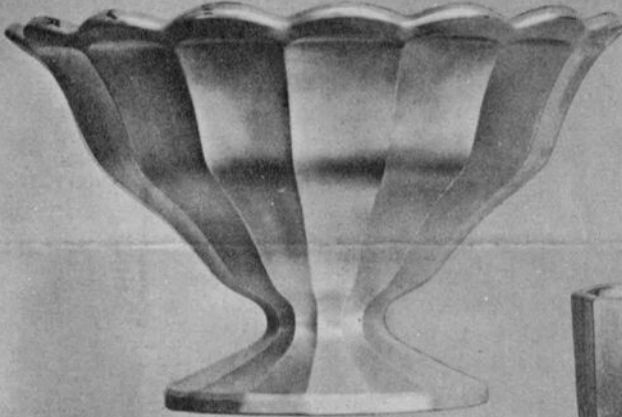


Also made
in 5 oz. size

No. 409
8 oz. Soda Tumbler



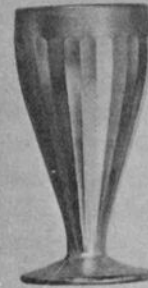
No. 38
7 inch Banana Split or Spoon Tray



No. 309
12 inch Orange Bowl, Footed



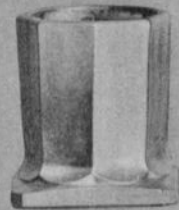
No. 388
10 oz. Soda Goblet



No. 388
7 oz. Soda Goblet



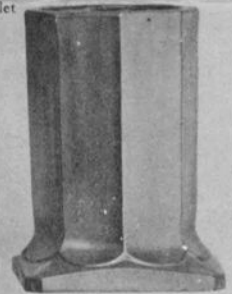
No. 388
5 oz. Soda Goblet



No. 1
Spoon Holder, Low



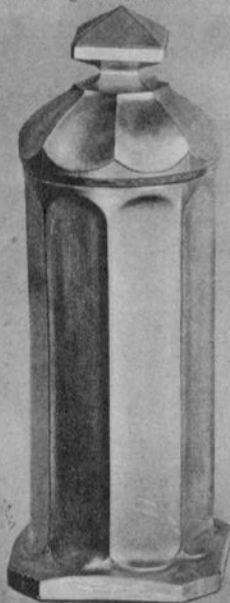
No. 1
Sugar and Cover



No. 2
Spoon Holder, Tall



No. 376
Straw or Bouquet Holder
Individual



No. 377
Straw Jar and Cover



No. 165
Crushed Fruit Jar and Cover, Tall



No. 166
Crushed Fruit Bowl and Cover
Low Sanitary

QUARTERLY MEETING REPORT

(Photos by David Rankin)

by Sue Rankin

On Sunday, August 27, 1978, thirty-two NCC members gathered for the Quarterly meeting.

A short business meeting was held, during which we discussed future programs for Quarterly meetings and the wide acceptance of the excellent slide presentations which we have had this past year. The next program will be a slide presentation on candlesticks with many of the sticks available for on the spot inspection.

There was a short discussion on starting a Study Group. There seems to be widespread interest in forming new groups, but people are having difficulty meeting other collectors in their geographical area. Members were reminded that the Club will publish notices in the CRYSTAL BALL, at no charge, to assist interested members in locating others.



BILL SMITH and JANICE HUGHES

There was some discussion concerning the "new" Lady Leg bookends being produced by the Mosser Glass Company. Mosser has produced some carnival bookends for one customer since making the bookends for the Club last November. To date none have been made in crystal or crystal frosted, which is the only way the Cambridge Company produced them, nor have any been produced in the blue color used for NCC's Bookend project.



"SHOW and TELL" ITEMS!

This led into a discussion of the next Bookend to be issued by the Club. In November, we will have another Bookend Dinner at which time we will issue the Pouter Pigeon. A new mold will be made for and purchased by NCC. Due to difficulties experienced by other organizations in their offerings, the Board of Directors decided that having the Club own the mold was the only way to guarantee a truly limited Edition. This will protect the collector as well as the Club's endeavor.

After the business meeting concluded, the chair was turned over to Frank Wollenhaupt and Lynn Welker, who presented the program.

For those members of NCC who are unable to attend Quarterly Meetings or the Annual Convention, the Project and Program committees have prepared two slide presentations which can be rented from the Club. These Shows of 80 slides each come with a written narrative and were the subject of the program for this meeting.

The first is a presentation of stemware showing approximately 70 different Cambridge stems with the narrative covering sizes, colors and decorations available for each stem. The quality of the slides is excellent and each stem is easy to study.

continued on next page--



The tumbler with "ROSEPOINT" design embossed into it's cone shaped foot is just to the left of the striped bottle!

The second was a presentation of highlights from past Convention Display rooms. For those who have attended the Convention each year and had the opportunity to view these displays, this is still an excellent slide show, since it provides the opportunity to see these pieces more closely. It also presents the individual pieces without the overwhelming feeling one often experiences in the Display rooms. For those who have never attended a Convention, these slides are your opportunity to see some truly rare and beautiful Cambridge.

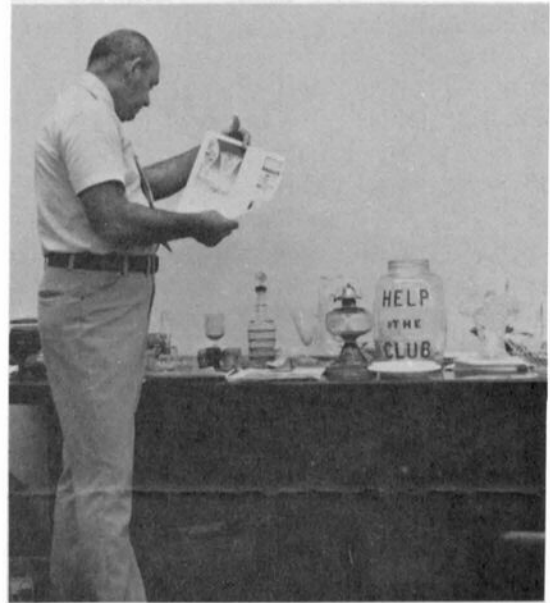
The narrative for this presentation points out the various pieces and mentions many additional facts which the collector might need in identifying similar pieces.

At the conclusion of the program, Bill Smith presented the "Show & Tell" session. As usual, there were some very rare Cambridge pieces and also some pieces which could not be identified at all.

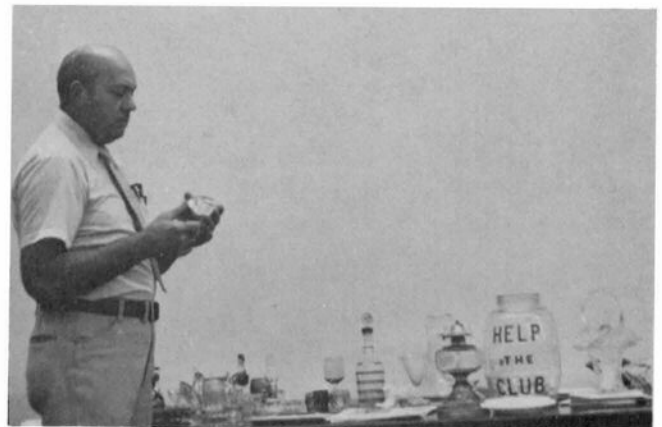
Among the more unusual pieces was a goblet with the Rosepoint pattern pressed into its crystal cone shaped stem, with a plain amber top. This goblet is believed to be a forerunner of the more common etched Rosepoint pattern. There were several beautiful NearCut pieces including a marked Crystal goblet in the Radium pattern

and a rare, small oil lamp which appears in the 1912 NearCut catalog.

Apparently more and more collectors are beginning to recognize the Blue Bell color as four pieces in this color were present. Included were a Georgian tumbler, a tall sherbet etched #731, a perfumer and a dresser tray plate etched 4, with gold encrusting.



Bill shows advertising taken from old magazines, brought in by our members.



ANOTHER VIEW OF THE "SHOW & TELL" TABLE!

MUSEUM DONATIONS

From time to time our members write us and request a list of items that have already been donated to our Museum, so that they might be able to make a decision as to what would be needed that they could donate. This kind of interest is always appreciated, as donations are always welcome. With this in mind, we will list below the items that have been donated just as a matter of information for our entire membership.

A Blue Willow dinner plate; a Jelly glass; a Goblet with "Ye Olde Ivy" etching; an Arcadia stem; a blank stem; an unfinished #3011 Nude stem brandy with amber top; a cocktail with the Sweetheart stem; a Narrow Optic pulled stem; a Martha Washington footed juice with Grape etching; and a Near Cut bowl in green with gold trim.

The Cambridge Squares Study Club have made a major contribution to NCC with the goblets they have purchased over the past two years. They are pictured below in this photo that was taken at the 1978 Convention.



They have donated over 60 goblets and it is their desire to acquire an example of each stem ever produced by the Cambridge Glass Company. This is quite an undertaking and they would welcome contributions from other members.

If any of our members would be interested in making a donation of any kind to the Museum, you are encouraged to write to: NCC Museum Fund, P. O. Box 416, Cambridge, Ohio.

Interested in a STUDY CLUB??

An increased interest in starting a Study Group has been expressed by many of our members. Listed below is a list of those who are more than a little involved in this project.

If you live in or near (within 50 to 100 miles) any of these folks and would be interested in getting together once a month (at least eight times a year), why not get in touch with them and make arrangements to meet. This is the best possible way to learn more about Cambridge glass.

Your collection seems to take on more interest when you can discuss and share it with others who have similar interests.

The character and format of a particular Study Group is determined and developed by those members making up the group. NCC suggests not less than three and not more than twenty members in each group.

Drop a line to the person nearest to your home, c/o P. O. Box 416, Cambridge, Ohio 43725. You'll be surprised how much fun a Study Group can be!

Virginia Dutcher, Hide-A-Way Hills, Ohio.

Joyce Dawson, Oregon.

JoAnne Wegman, Cleveland, O. 216-351-0799.

Raymond W. Pyle, Mentor, Ohio.

Shirley Ladouceur, Central New York, Syracuse or Rochester.

Kenneth Cook, North Central Indiana, 219-653-2511.

Beverley Hanson, California.

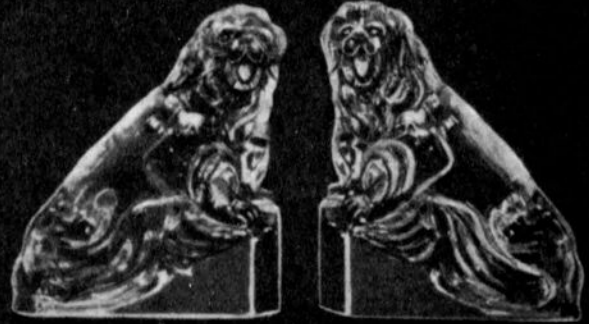
If there are others who want to belong to a Study Group, send us your name and locality, and we will be happy to help by printing your name in the CRYSTAL BALL.

Won't you please let us hear from you real soon! You'll be glad if you do!

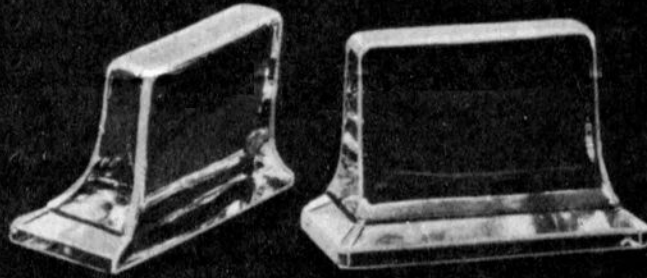
BOOK ENDS



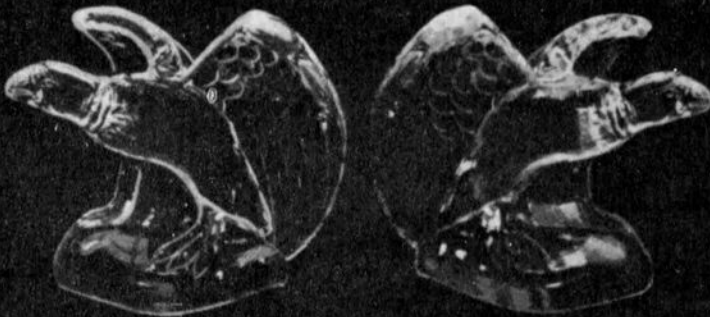
1128 Scotty Dogs



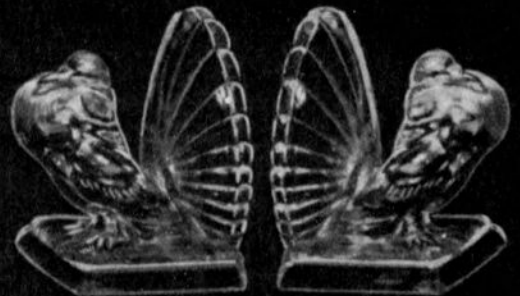
1129 Lion



511



1119 Eagle



1124 Pouter Pigeon



BELLS



3625



3575



3700



3130



3121



3650



3130

R. C. Eng. Manor



3700

R. C. Eng. Manor



3650

R. C. Eng. Montrose



3121

R. C. Eng. Montrose



3130

Etched Portia



3625

Etched Chantilly



3121

Etched Rose Point



3700

Etched Blossom
Time



3650

Etched Wildflower



3575

Etched Diane

Club News

continued from page 2

STUDY GROUP ADVISORY: Chairman Janice Hughes reported there was a list of interested parties printed in the August CRYSTAL BALL, but to date there had been no response. All information has been sent to a possible Study Group in California.

MUSEUM: Chairman Arnold Lynd reported he had presented a contract on the AT&T Building to the Mayor of Cambridge, but as it is a public property only sealed bids will be accepted. He will report on this later.

PROGRAM: Chairman Charles Upton reported the program for the November Quarterly meeting will be a slide presentation on candlesticks.

OLD BUSINESS

None.

NEW BUSINESS

There was a discussion on Study Groups in general and what they actually do.

Mr. Chet Gamble asked about the Lady Leg Bookends being reissued by another party in green carnival. President Smith advised that due to the Club not using the mold again, it was available to anyone.

President Smith asked for suggestions on a possible color for the Pouter Pigeon Bookends.

President Smith advised the facts and figures on the Convention and Antique Show are available for viewing.

President Smith reported Cambridge Glass received 30 ribbons at the Ohio State Fair this year.

Frank Wollenhaupt and Lynn Welker presented the program, showing the slide presentations on Stems and Display Rooms.

A motion was made by David Rankin to adjourn at 4:35 PM.

The next meeting will be held on November 11, 1978, at Bakers Restaurant, Norwich, Ohio.

Janice Hughes
Secretary

Classified

FOR SALE: ROSEPOINT #3121 stems: \$25.00 each item. 18 iced tea, 16 10 oz. water goblets, 5 3900/22 8" salads. Add \$2.00 postage and insurance per order. Diane Williamson, P. O. Box 422, Tulsa, Okla. 74101. 918-492-5170 after 6 PM.

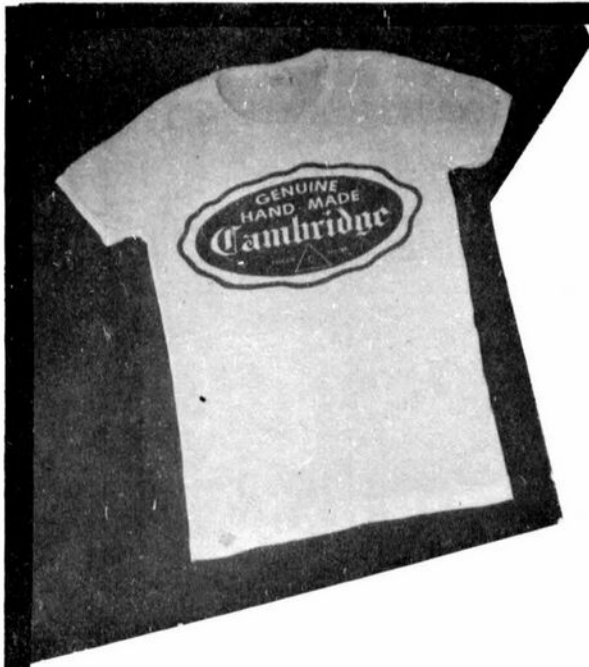
FOR SALE: CROWN TUSCAN 3-part covered relish \$47.50; Crown Tuscan 6" vase gold etched Rosepoint \$65; 3 Farber wines on 5-3/4" stems w/etched crystal inserts \$6 each; Buzz Saw 4 oz. handled Cologne \$22.50; #1219 individual salt & pepper, pink \$9.50 pr.; 2 Farber tilt Cruets, dark green \$10 ea.; ftd. Shell nut cups, crystal \$4, yellow, light green, amber, pink \$5 each. SASE Postage Extra. California residents add 6% Sales Tax. Vicki Harman, P. O. Box 290, Escondido, California 92025.

FOR SALE: CAMBRIDGE Cake Set, blue Decagon, 21 pcs. crown tuscan covered candy; crown tuscan candlestick, crown tuscan 4" Shell dish; (2) crown tuscan nut dishes; blue Caprice cigarette set; amethyst Ball Decanter set; crystal Caprice. Also Heisey. Send SASE for price list. Jeannine Oldak, 10 Edgemoor Road, Cheltenham, Pa. 19012. - 215-635-1973.

FOR SALE: CAMBRIDGE CAPRICE, stemmed goblets, sherbets w/underplates, sugar, creamer, relish and others. Original labels on most. Write: Mrs. Kathryn Jeuck, 245 Millwood Lane, Waukesha, Wis. 53186

WANTED: AMBER DECAGON 9 1/2" dinner plates to complete my set. Also top for cigarette box, crown tuscan Seashell pattern to replace broken cover. F. Lipper, 75-08 178 St., Flushing, N. Y. 11366.

continued —



T Shirts by Brandt

AN IDEAL GIFT FOR THE CAMBRIDGE COLLECTOR
 A YELLOW T-SHIRT WITH A BLACK CAMBRIDGE SEAL!

FIRST QUALITY — SPECIAL \$7.50 each

The T-Shirt you saw at the Cambridge
 Convention is now available in men's and
 women's sizes!

ORDER NOW: Send your check or money order (\$7.50 for each shirt) to:

T-Shirts by Brandt, 1305 N. W. 1st Avenue, Fort Lauderdale, Florida 33311

Please specify size when ordering: WOMEN: sm., med., lg. MEN: med., lg., x-lg.



JAPONICIA

MRS. LAURA LASKIN
 7 Tioken Road, Spring Valley, N. Y. 10977
 Phone: 914-356-2019

MAIL BID

CAMBRIDGE NUDE STEMS #3011. Amethyst bowl,
 crystal stem. (Ref: NCC 1930-34, page 34-2)

12 each of the: #3011/3 Saucer Champagne's;
 #3011/7 4½ oz. Claret's; and #3011/21 Table
 Goblet's _____ 36 pieces total

MINIMUM BID: \$1,500.00 --- MINT CONDITION
 POSTAGE & INSURANCE EXTRA!

LOIS & BURR NICHOLS
 1004½ Gaston Avenue, Cambridge, Ohio 43725
 Phone: 614-432-6725

SCARCE CAMBRIDGE FOR SALE

Pair of Crown Tuscan lighted URN VASES with
 gold Rosepoint motif and the words "Cam-
 bridge Rose Point" in gold on each side.
 MINT CONDITION _____ PAIR \$500.00

Cambridge Carnival 9¼" Center Bowl, Inverted
 Strawberry, dark amethyst --- almost red!
 Marked NEAR CUT _____ \$300.00

Large Public Auction

ANTIQUES and COLLECTIBLES

4003 OLD COLUMBUS ROAD

SPRINGFIELD, OHIO

Located 2 mi. E. of Springfield on the S.E. corner of Old Columbus & N. Bird Rds. From I-70 use exit 59 (SR 41). Go W. on 41 to Bird Rd. (2 mi.) then N. to Old Columbus Rd. (another 2 mi.).

Saturday, OCTOBER 14, - 10 AM

Because they have run out of storage room and must either sell, or move, Bill & Phyllis have decided to sell! This SALE represents 25 years of collecting by the Smith's and includes a tremendous amount of old, unusual, and interesting items. This is only a partial listing of items to be offered the day of the sale.

DEPRESSION GLASS: several hundred pieces in almost all of the major patterns shown in Weatherman's Book, including their PITCHER COLLECTION (approx. 50) and CUP & SAUCER COLLECTION, plus accessory pieces of plates, cups, saucers, bowls, tumblers, butters, etc.

OTHER GLASS: including a few pieces from each of the following companies: AKRO AGATE. ALLADIN (including: amber Cathedral Style #109 Oil Lamp; powder jar; ashtray; & several electric table lamps - both pairs & singles). CAMBRIDGE (including: 2 3" Swans, crystal & lt. green; amber Pencil Dog; pair, moonlight blue 3½" Star candleholders; #703 Flower Holder lt. green w/3" crystal block (NCC 30-34, pg. 42); crystal ring stem Ivy Ball w/amber top; 2 Bennett Juicers; set 4 Stackaway Ashtrays on holder, lt. blue, pistachio, pink & yellow; #3121 stem 3 oz. Cocktail etched Rosepoint; NearCut sugar w/lid "Four Lines" pattern; #140 crystal Candy Mug (WII-111); amber Hat (B1903-52); crystal Honey Dish w/Farber lid; #925 After Dinner Coffee set, crystal, 12 pcs., no box (NCC 30-34, pg. 33-24); etc.). DEGENHART. FOSTORIA. HEISEY (including: 4 sm. crystal Swan salt dips; green Cucumber Dish; Oyster Cocktails w/paper labels; Imperial amber slag Elephant). IMPERIAL. MCKEE. NEW MARTINSVILLE. PADEN CITY. L. E. SMITH. U. S. GLASS.

POTTERY & CHINA: McCOY (Rocking Chair planter; Wishing Well cookie jar, etc.); ROSEVILLE (original sticker on one piece); HULL; OCCUPIED JAPAN; NIPPON; SILESIA; HALL (Autumn Leaf Ball pitcher); and more.

ANTIQUES & PRIMITIVES: some jewelry; Indian stones; large oxen yoke; free; fireplace cranes; hay saw; steelyard scales; misc. hand tools (some auto); baskets; fruit jars; several typewriters; farm and buggy lanterns; Flintlock pistol; sad irons; hat pins; thimbles (3 sterling); childrens dishes and toys; and much, much more!

ANTIQUÉ FURNITURE: large Walnut Bookcase-Desk (2 piece, 8 ft. high, on high legs with drawer in table, pigeon hole compartments in desk, and glass doors on bookcase top); Poplar Cannonball Rope Bed; small round Oak dropleaf table; square Oak Parlor table; cane bottom rocker; 3 pressed back Oak kitchen chairs; 6 bentwood ice cream chairs; 4 plank bottom kitchen chairs; Oak high chair; piano stool with glass ball and metal claw feet; 3-shelf Walnut corner whatnot; Oak hat rack; and more.

MISCELLANEOUS: Railroad items (including old manual Switch Stand); telephone insulators; farm implement seat; brass steam whistle; brass lighting fixtures; WWI & II Army helmets; garden plow; collection of Zane Grey books; many assorted old books; portable sewing machine; and numerous other items not listed.

TERMS: CASH or CHECK with proper ID. Positive ID required to register for bid number!!

LUNCH SERVED ON GROUNDS

BRING YOUR CHAIR AND PLAN TO SPEND THE DAY! THIS WILL BE A BIG AUCTION!!

OWNERS

MR. & MRS. WILLIAM C. SMITH

Phone: 513-323-3888

AUCTIONEERS

COL. MAX D. CATER

COL. DALE SNODE

Steve Horner

4170 Miner Drive, Brunswick, Ohio 44212

Phone: 216-273-2703 - after 6 PM PLEASE!

FOR SALE

NUDE STEMS (Ref. NCC 30-34, pg. 34-2)

1 #3011/3 Champagne, emerald green	\$ 50.00
1 #3011/9 Cocktail, pink	45.00
1 #3011/9 Cocktail, ebony Nude, crystal bowl	50.00
1 #3011 7" cupped Comport, carmen	65.00

GEORGIAN TUMBLERS

8 5 oz., amber (all)	48.00
7 5 oz., various colors (each)	9.00
13 9 oz., various colors (each)	9.00
2 12 oz., smoke and mandarin gold (each)	11.00

DECAGON, AMBER, CLEO ETCHED

1 Sweet Pea Vase	14.00
1 center handled Server	12.00
4 cups, 2 saucers, 3 bread & butters (all)	25.00

MISCELLANEOUS

2 #3077 Goblets, Cleo etched, lt. emerald green (each)	5.00
1 Near Cut Marjorie Tankard, crystal	36.00
1 #1321 Decanter w/6 glasses, amber (WII-16) (set)	27.50
1 #1369 Decanter w/4 glasses, amber (WII-16) (set)	36.50
1 #48 Everglades 10" Bowl, crystal (NCC 30-34, pg. 33-29B)	13.00
1 Doric Candlesticks, peachblo (pair)	45.00
1 #1402/4 Tally-Ho Tumbler, 9 oz., carmen (NCC 30-34, pg. 32-33)	10.00
1 #1402/78 Tally-Ho Punch Mug, carmen (NCC 30-34, pg. 33-3)	17.50
1 Farber Decanter w/4 glasses, amber (set)	40.00
1 footed Comport, 7", crown tuscan (Bl6-33)	27.00
1 #3400/1240, Bowl, 12", Achilles etching	30.00
1 #3500/55 Basket, ebony w/gold flowers	25.00
1 Cascade Sugar and Creamer, mandarin gold (set)	19.00
1 Caprice Cruet, milk glass (WII-2)	34.00
1 Martha Washington Stein, 10 oz., carmen (NCC 30-34, pg. 32-24)	28.00
1 #487 Cracker Plate, #732 etching, pink	6.50
1 #1236 Ivy Ball, 8", two-tone (NCC 30-34, pg. 32-9)	30.00
1 #1095 Sugar, Creamer and Tray (NCC 30-34, pg. 32-9) (set)	20.00
1 5" Candlesticks, carmen (B39-3-24) (pair)	32.50

DEALERS



DIRECTORY

<p>ANTIQUE ALLEY 24815 Broadway Bedford, Ohio 44146 216-232-7739 ---- Mario Spagnola CAMBRIDGE GLASS ROYAL DOULTON</p>	<p>BENICIA ANTIQUE SHOP 305 First Street Benicia, California 94510 OPEN 11 AM - 5 PM Closed Monday</p>	<p>YOU CAN ADVERTISE YOUR ANTIQUe SHOP HERE! 1 inch - \$6 for six months</p>
<p>CHURCH STREET ANTIQUES 6 Church Street Boston, Massachusetts 02116 George or Frank --- 617-426-1048 CAMBRIDGE, HEISEY, GENERAL LINE</p>	<p>Z. E. LOPES - 707-745-0978 VISIT HISTORIC BENICIA and its 28 shops Off Interstate #80 ----- ----- North of San Francisco</p>	<p>D & D ANTIQUES 184 East Kossuth Street (GERMAN VILLAGE) Columbus, Ohio 43206 DICK SLIFKO ----- 614-443-6020</p>
<p>YOU CAN ADVERTISE YOUR ANTIQUe SHOP HERE! 1 inch - \$6 for six months</p>	<p>GREEN ACRES FARM 2678 State Route 310 North Pataskala, Ohio, 43062 Sat. & Sun. 1-6 PM ---- W. Bryan CAMBRIDGE & HEISEY - 614-927-1882</p>	<p>FINDER'S KEEPER'S ANTIQUES P.O. Box 303 P.O. Box 16023 Dayton, O. Columbus, O. 45401 43216 513-254-2937 614-965-1906 SPECIALIZING IN CAMBRIDGE GLASS!</p>
<p>SWISS HILLS COLLECTIBLES Mary & Wilbur Henderson 303 Guilford Avenue Woodsfield, Ohio 43793 Shows Only -- 614-472-1133 SPECIALIZING IN CAMBRIDGE GLASS!</p>	<p>HERITAGE ANTIQUES Rt. #5, Cambridge, Ohio - 43725 614-439-3241 Take N.8th St.Rd.(County Rd.#33) TURN LEFT AT RAILROAD TRACK</p>	<p>HOBBY HOUSE ANTIQUES Rt. #1, Cambridge, Ohio - 43725 614-432-6971 - Frank & Lena Take Rt.#209 W.From Cambridge To RT. #658 - NORTH 1 1/2 MILES</p>
<p>HOFF - HAVEN ANTIQUES 21 Half Moon Lane Tarrytown, New York 10591 Shows-Mail-No Lists-914-631-2140 CAMBRIDGE, ROSE IN SNOW POSTORIA</p>	<p>GEORGE HOFFMAN ANTIQUES 129 South 4th Street Newark, Ohio 43055 --- 614-345-8550 ---</p>	<p>D'MARIE'S ANTIQUES US Rt. 1 - just South of Rt. 606 Thornburg, Virginia 22565 703-582-6220 ----- Jim Rankin OPEN EVERY DAY 10 AM to 6 PM</p>
<p>OUR GLASS ANTIQUES Box 27, Wills Point, Tex. 75169 20th CENTURY COLLECTIBLES fea- turing CAMBRIDGE GLASS! Shows- No Lists - SASE Please - PAUL & GINNY HENDERSON -- 214-563-6971</p>	<p>OLD TOLL GATE ANTIQUES Route #5, Box 7X Milan, Illinois 61264 SPECIALIZING IN HAVILAND CHINA MATCHING SERVICE</p>	<p>OLDE TOWNE ANTIQUES 307 W. St. Louis Street Lebanon, Illinois 62254 Edith Zimmerman -- 618-537-4567 GENERAL LINE ANTIQUES</p>
<p>S & J ANTIQUES 5616 Hensel Woods Road Gahanna, Ohio 43230 Sue & Jack Rettig - 614-855-1711 CAMBRIDGE GLASS OUR SPECIALITY</p>	<p>Use Schleigers book numbers or send saucer for pattern match. SASE APPRECIATED Marie Baker ----- 309-787-2392 GENERAL LINE OF ANTIQUES</p>	<p>WOLFE'S GLASS EMPORIUM 330 Woodlawn Avenue Cambridge, Ohio 43725 OPEN BY APPOINTMENT - JOHN WOLFE 614-432-2590 OR 614-262-9353</p>
<p>KILPATRICK'S ANTIQUES (Lu, Dort and Pat) S. E. Corner Public Square Troy, Ohio 45373 Res.(513) 335-1798 Shop 339-8754 WE BUY ONE PIECE OR COLLECTIONS!</p>	<p>THE GLASS CUPBOARD 39 Shire Oaks Drive Pittsford, New York 14534 Marcia Ellis 716-586-7596 CAMBRIDGE ONLY --- SASE FOR LIST</p>	<p>M & M ANTIQUES & COLLECTIBLES 310 N. Main - Box 417 Canton, Kansas 67428 The Martin's ----- 316-628-4705 SPECIALIZING IN CAMBRIDGE GLASS!</p>
<p>ROLLING ACRES ANTIQUES C. R. #33 (8th St. Rd.) Cambridge, Ohio 43725 Sandy Jenkins ----- 614-432-2570 CAMBRIDGE & GENERAL LINE ANTIQUES</p>	<p>EVELYN M. ALLEN 135 Cynthia Street Heath, Ohio 43055 Mail Order & Shows 614-522-1635 SPECIALIZING IN CAMBRIDGE GLASS!</p>	<p>JEWELL'S TREASURE BOX 6141 No. State 60, NW McConnelsville, Ohio 43725 (mail order or shows only) STERLING & PLATE FLATWARE Specializing in Older Patterns</p>

National Cambridge Collectors, Inc.

P. O. Box 416, CAMBRIDGE, OHIO 43725



A nonprofit organization dedicated to the preservation and study of Cambridge Glass

You Are Cordially Invited To Become A Member Of The NATIONAL CAMBRIDGE COLLECTORS, INC.

Benefits derived from membership include: receipt of our club publication, The Cambridge CRYSTAL BALL; informative quarterly Meetings; Antique Shows; Auctions; and other special events.

The Cambridge CRYSTAL BALL is published the first of each month. This newsletter contains educational and interesting articles, questions and answers, information on reproductions and reissues, notices of all club functions, classified advertisements, dealers directory and many other features of interest to collectors of Cambridge glass.

Yearly dues are \$10.00 for Individual Members and \$3.00 for each Associate Member. All members have voting rights, but only one issue of the CRYSTAL BALL will be mailed per household.

Name (please print) _____ \$ 10.00

Mailing Address _____

City _____ State _____ Zip _____

Associate Members: (Must be at least 12 years of age and living in the same household.)

1. Name _____
2. Name _____
3. Name _____

Associate Members @ \$ 3.00 each \$ _____

Please make check payable to: National Cambridge Collectors, Inc.

TOTAL AMOUNT ENCLOSED: \$ _____

Recommended by _____

National Cambridge Collectors, Inc.
P. O. Box #416
Cambridge, Ohio 43725

FIRST-CLASS MAIL
U.S. POSTAGE
PAID
So. Vienna, Ohio
45369
Permit No. 15

FIRST CLASS MAIL



2691 Half Gallon Pitcher.
Height, 9 inches; packed 2 1/4 doz. to bbl.
Price, \$3.60 per dozen.
2691 Tumblers to match, 8oc per dozen.