

Cambridge



Crystal Ball

ISSUE NO. 71

MARCH 1979

Published monthly by the National Cambridge Collectors, Inc.
To encourage and to report the discovery of the elegant and boundless product
of the Cambridge Glass Company, Cambridge, Ohio



Photo circa 1924

The Cambridge Glass Co., Cambridge, Ohio

ENGRAVING DEPARTMENT

Fine work in every detail, requiring great care and skill. Accuracy is the "slogan" here.

MEMBERSHIP RENEWAL NOTICE

If the date on your address label is - - 3 - 79
This is your LAST ISSUE of the
CRYSTAL BALL. Please renew NOW!

Have placed an order for "Spring" weather for our Quarterly Meeting and Auction. Of course, anything short of a Blizzard will seem Spring-like to many of us! Hoping to see many of you in Cambridge March 2nd and 3rd!

Beel

CAMBRIDGE CRYSTAL BALL

Official publication of National Cambridge Collectors, Inc., a non-profit corporation with tax exempt status. Published once a month for the benefit of its members. Membership is available for individual members at \$10 per year and additional members (12 years of age and residing in the same household) at \$3 ea. All members have voting rights, but only one CRYSTAL BALL will be mailed per household.

Back issues of the CRYSTAL BALL are available to members only, at a cost of 60¢ ea. or 12 issues for \$7.

1978-79 Officers & Committee Chairpersons

PRESIDENT _____ William C. Smith
 VICE-PRESIDENT _____ George W. Hoffman
 SECRETARY _____ Janice Y. Hughes
 TREASURER _____ Ruby Landman
 SERGEANT-AT-ARMS _____ George W. Hoffman
 BUDGET & FINANCE _____ William C. Smith
 BY-LAWS _____
 CONVENTION _____ George W. Hoffman
 MEMBERSHIP _____ Josephine A. Barstow
 MUSEUM _____ Arnold Lynd
 PROGRAM & ENTERTAINMENT - Charles A. Upton
 PROJECT _____
 PUBLICITY _____ Donald E. Armbrecht
 STUDY GROUP ADVISORY _____ Janice Y. Hughes

1979 CAMBRIDGE AUCTION _____ Lynn Welker

CRYSTAL BALL Editor _____ Phyllis D. Smith

CLASSIFIED ADVERTISING RATES

5¢ per word \$1.00 minimum

We cannot mix type size in classified advertisements. Abbreviations and initials will count as words. Payment in full must accompany all ads.

DISPLAY ADVERTISING RATES

	Members	Non-Members
1/8 page _____	\$ 4.00	\$ 6.00
1/4 page _____	7.00	10.00
1/2 page _____	12.00	18.00
3/4 page _____	17.00	25.00
Full page _____	22.00	33.00

DEALERS DIRECTORY

1" ad _____ \$6.00 for 6 months

Cambridge CRYSTAL BALL assumes no responsibility for items advertised and will not be responsible for error in price, description or other information.

Advertising copy must be in our hands by the 15th of each month to assure publication in our next issue. Advertisements containing reproductions will not knowingly be accepted unless clearly stated.

PLEASE ADDRESS ALL CORRESPONDENCE TO

Cambridge CRYSTAL BALL
 National Cambridge Collectors, Inc.
 P. O. Box #416
 Cambridge, Ohio 43725

PLEASE NOTIFY US IMMEDIATELY OF ANY CHANGE IN YOUR ADDRESS!

Please enclose a self-addressed, stamped envelope when requesting information!!

STUDY Club News

STUDY GROUP #5 - SOUTHERN CALIFORNIA

The Cambridge Collectors of California have held two meetings since their last report appeared in this column.

On December 16th their Christmas meeting was held in the home of Joe and Linda Svehla, with twenty members and two guests present.

No business was conducted that evening as it was our annual Christmas Party with dinner and an exchange of gifts.

On January 19th, we met in the home of Jim and Paula Ashby with sixteen members and one guest present.

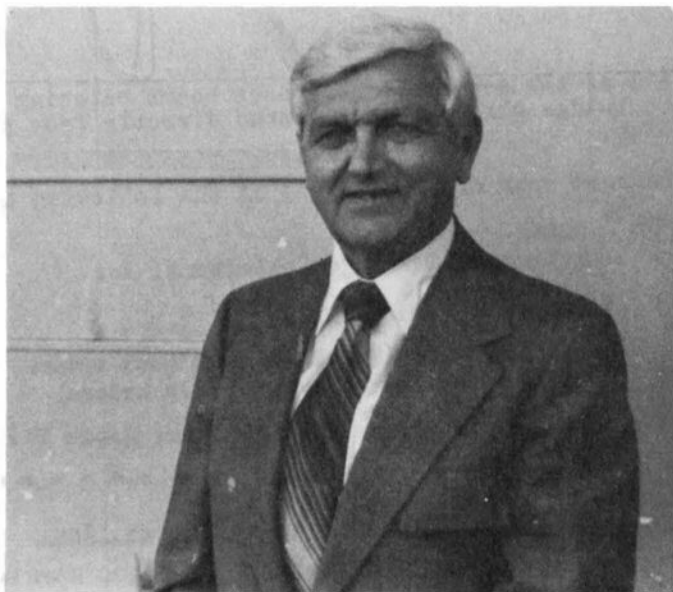


At this point, let us introduce you to our members. From left to right, standing: Don Jennings, Chet Buddenbohm, Ron Rockafellow, Harold Hanson, Tony Regan, Lois Buddenbohm, Herb Wanser, Betty Regan and Betty Losch. Seated in the middle are: Betty Wanser, Bill Losch, Paula Ashby, Linda Svehla and Beverley Hanson. Those in front row are: Sterling Carberry, Joe Svehla, Pat Carberry, Ruth Eilenfield and Yolanda Jennings. Not shown are Jim Ashby who was squeezed out and Fred Eilenfield who was taking the picture.

continued on page 8

Let's Get Acquainted

by Phyllis Smith



DON E. ARMBRECHT

It is with pleasure that we take this opportunity to introduce you to one of the newest members of our Board of Directors, Mr. Don E. Armbricht

Born in Findlay, Ohio on October 13, 1914, Don is the son of William Jr. and Jennie Armbricht. He is a graduate of Findlay High School as well as Findlay College from which he received his B. A. Degree in 1936.

On March 10th of this year, Don and the former Miss Odulla I. Lugibihl will celebrate their forty-second Wedding Anniversary. They are the parents of three adult sons and the proud grandparents of several grandchildren. They presently reside in Avon Lake, Ohio.

Serving in a position that carries responsibility is not a new experience for Don. For 23 years he has served on his local School Board, holding both the offices of Vice-President (3 yrs.) and President (2 yrs.). As a member of the Kiwanis Club the past 18 years, he has served as its Director (4 yrs.), Vice-President (3 yrs.)

and President (1 yr.). He is presently holding the office of Secretary for the "Greate Years Corp.", a non-profit organization involved with the building and operation of a Senior Citizen Retirement Center.

Don is employed as Product and Process Development Scientist by the Union Carbide Corporation. Prior to obtaining this position, he worked 35 years in Quality Control for their Carbon Products Division.

Don and his lovely wife Odulla became members of N.C.C. soon after its inception in 1973. They have actively supported the club by their attendance at almost all of the Quarterly meetings, Conventions, and other club related activities.

Their interest in Cambridge glass dates back to the year they were married. Money received as a wedding gift was used to buy several pieces of crystal Caprice. Odulla chose tall stemmed goblets, sherbets and luncheon plates because she felt it was a beautiful pattern, and she continues to feel the same admiration for this lovely glassware, even today.

Naturally they have added to their original purchase and now possess well over 100 pieces in their service. They have also enlarged their interest in collecting things of beauty and their Cambridge glass collection now numbers over 500 pieces.

Besides his interest in collecting, Don also likes to work in his garden and play tennis whenever he can. He and Odulla are active members of the United Church of Christ and have been for many years. Don has served his church in many ways, which include holding the positions of Trustee and Moderator.

As a member of the Board of Directors, Don has already accepted the job of Publicity Chairman and is busy working at this job.

It seems our Mr. Armbricht is not a man to take lightly any responsibility he accepts and it is for this reason that NCC is very fortunate indeed to number him among their membership.

Tally-ho, my Darling

by Judy Johnson

In my good ship "Nautilus"
on a sea of smooth glass
I'd sail for strange places
with you my fair lass.

We'd sail to Mount Vernon
to Corinth in Greece
To the Everglades too
if that be your Caprice.

With Chintz sails unfurled
past Apple Blossoms growing
We'd sit in the cabin
with the Candlelight glowing.

Your Decagon eyes Royal Blue
in the night
And your Willowy stems would be
a constant delight!

With your sweet Ball-Shaped body
and Gold Krystol hair
I'd Crown you with Tuscan
my beauty so fair!

Your gown would be Rosepoint
trimmed in Chantilly lace
While beautiful Blue Moonlight
would illumine your face.

I'd buy you Rock Crystal
with my Mandarin Gold
Gadroons! My darling, your
Cambridge Arms I would hold!

But my problems are many
my troubles not few
For how can I choose
from the many of you?

Will it be Cleo or Lorna
or my sweet Marlene
Why not Portia, Diane
or Elaine, so Pristine?

Then there's Gloria and Carmen
and Roselyn, too
Gadroons! Martha Washington,
what should I do?

BOOKS FOR SALE

All of the available reference books relating to Cambridge glass can be ordered directly from the Club.

Address your orders for any of the following to:

BOOKS
National Cambridge Collectors, Inc.
P. O. Box 416
Cambridge, Ohio 43725

Please add \$1.00 (P & I) on each book order.
(Not required for Price List only orders)

Ohio residents please add 4½% State Sales Tax.

by National Cambridge Collectors, Inc.

1949 - 1953 CAMBRIDGE GLASS CO. CATALOG REPRINT
(300 page reprint of original catalog)
Hardbound with Price Guide \$14.95

1930 - 1934 CAMBRIDGE GLASS CO. CATALOG REPRINT
(250 page reprint of original catalog)
Hardbound with Price Guide \$14.95

1978 PRICE GUIDE
for 1930-1934 catalog reprint \$2.00

by Mary, Lyle, and Lynn Welker

CAMBRIDGE GLASS CO.
(120 pages of reprint from 8 old catalogs) \$6.95

CAMBRIDGE GLASS CO. BOOK II
(119 pages of reprint from old catalogs) \$6.95

CAMBRIDGE, OHIO GLASS IN COLOR II
(15 color plates w/ descriptions and notes) \$5.95

by Harold and Judy Bennett

THE CAMBRIDGE GLASS BOOK
(96 pages with 59 color plates)
Paperback \$7.95

1903 CAMBRIDGE GLASS CO. CATALOG REPRINT
(106 page reprint of an original catalog) \$7.50

by Charles and Mary Alice Upton

1979 PRICE GUIDE to the CAMBRIDGE GLASS BOOK
(Prices for each item in Bennett book) \$2.00

etchings

by Phyllis Smith

Corresponding with our many members happens to be one of the more rewarding side-lights of being Editor of this publication. The gratification derived is two-fold in as much as it allows me to become better acquainted with each of you and it also affords me the opportunity of furthering my knowledge of Cambridge glass at the same time.

A case in point is the following letter from one of our newer members.

"Dear Phyllis, Last summer I became interested in Depression Glass. After subscribing to several of their publications I began reading about Cambridge Glass. It rang a bell.

Twenty-seven years ago as a Wedding present, I received eight Chantilly glasses. I never used them much because they were so pretty. Anyway, I still have seven.

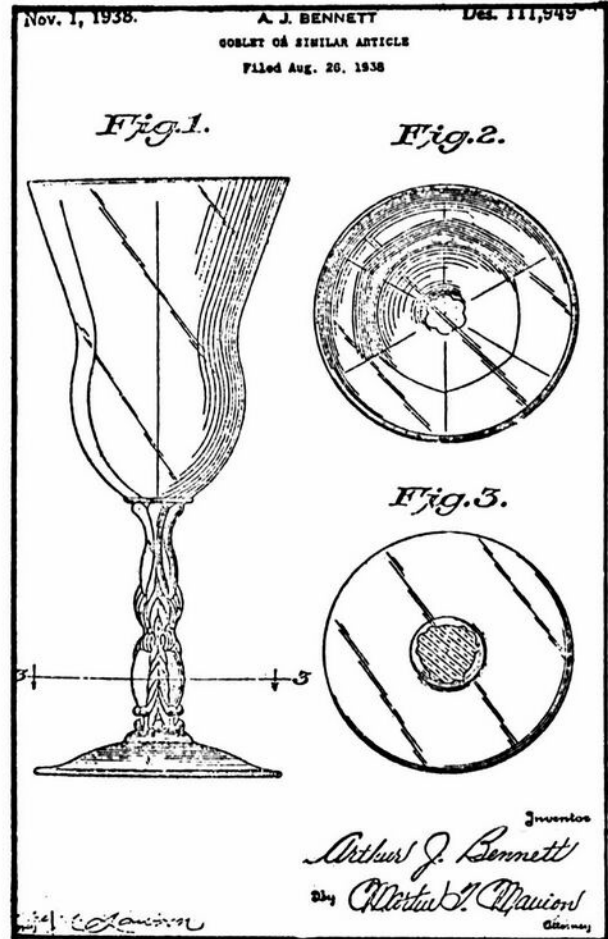
So, I promptly joined N.C.C., bought both books put out by N.C.C., Inc., and Bennett's book. I've really been studying my books and my issues of the CRYSTAL BALL. My problem is this -- I'm confused -- I don't know the difference between the 3600 Line and the 3625. In my book ('49-'53) page 58, the glasses I have look like 3625 12 oz. footed Ice Tea. The glasses are 7-3/4" tall, the stem is two inches high, they hold 12 oz. right even to the brim, and they are 6 1/4" around the smallest part. I want desperately to correctly identify them as I wish to add to them.

Another question -- I never see much Chantilly advertised for sale. Was this not produced very long? Do you think it too scarce to try to find? Any information you can give me will be appreciated.

Thank you very much -- Sincerely, Jerry Strange, Kentucky."

Being confused when it comes to identifying Cambridge stem lines is not new! In fact it is probable that we all suffer with this problem from time to time. But, do not despair Jerry (and others), there

is an answer to all our confusion and it can be summed up in just one word - STUDY!



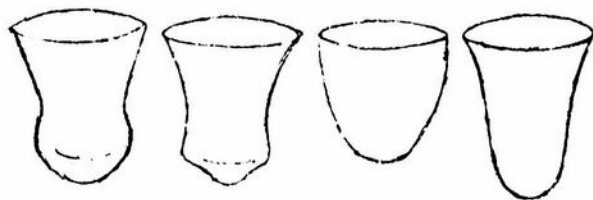
As you can see by the reproduction of the Patent application as shown here, this lovely stem line had its beginning way back in 1938. This original patent was for the STEM only. The bowl shown on this stem is the original #3600 line bowl. At a later time this line was enlarged to include different shaped bowls on this same stem and they in turn were numbered #3625, #3650 and #3675. (see next page)

The main thing to remember is that all of these lines are on the same stem - only the shape of the bowl is responsible for the various line numbers.

It is an admitted fact that every bit of study information we have available to us at this time only adds to our confusion. The photos and art work in all of the catalogs we have available use black background and therefore reproduce very poorly, making identification extremely difficult.

continued on next page

We have made the line drawings shown here in the hope that they will more clearly show the differences in the shape of the four bowls.



3600 3625 3650 3675

It is hoped that acquainting you with the fact that there are four different bowls available on this stem, rather than just two, will help and not further confuse you in your quest for identification of your particular stem line.

In answer to your question concerning the availability of the Chantilly pattern. Let us immediately put your mind at ease by telling you that this beautiful etching was produced by the Cambridge Glass Company for many years, beginning shortly before 1940 and continuing until the plant closed its doors for the final time in 1958. It could have been produced in just about everything that the company manufactured during those years, but it is shown primarily on the #3900 Line dinnerware and serving pieces.

Why it is not advertised for sale more extensively at this time can probably be attributed to lack of demand. Rosepoint etching seems to be the most popular among collectors at this time, hence it is more widely advertised.

In the April, 1977 issue of the CRYSTAL BALL, we featured one of our members in an article concerning her collection of Chantilly etched ware. In a period of two and a half years, she had managed to collect over 100 pieces of this beautiful pattern. This surely proves that it is not "too scarce" to try to collect.

Thank you for writing and affording us the opportunity of furthering our never-ending study of our favorite glass --- CAMBRIDGE!

LIST OF CHANTILLY ITEMS

3625	10 oz. Goblet
3625	7 oz. Tall Sherbet
3625	7 oz. Low Sherbet
3625	3 oz. Cocktail
3625	2½ oz. Wine
3625	4½ oz. Claret
3625	4½ oz. Oyster Cocktail
3625	1 oz. Cordial
3625	12 oz. Fid. Ice Tea
3625	10 oz. Fid. Tumbler
3625	5 oz. Fid. Tumbler
3900/17	Cup & Saucer
3900/19	2 pc. Mayonnaise Set
3900/20	6½ in. Bread & Butter Plate
3900/22	8 in. Salad Plate
3900/24	10½ in. Dinner Plate
3900/26	12 in. 4 Fid. Plate
3900/28	11½ in. Fid. Bowl
3900/33	13 in. 4 Fid. Torte Plate, R. E.
3900/34	11 in. 2 Handled Bowl
3900/35	13½ in. 2 Handled Cake Plate
3900/40	Ind. Sugar & Cream
3900/41	Sugar & Cream
3900/54	10 in. 4 Fid. Bowl, flared
3900/62	12 in. 4 Fid. Bowl, flared
3900/65	12 in. 4 Fid. Oval Bowl
3900/67	5 in. Candlestick
3900/72	6 in. 2 lite Candlestick
3900/74	6 in. 3 lite Candlestick
3900/100	6 oz. Oil, g. s.
3900/111	4 pc. Mayonnaise Set
3900/115	13 oz. Tumbler
3900/120	12 in. 5 part Celery & Relish
3900/123	7 in. Relish or Pickle
3900/124	7 in. 2 part Relish
3900/125	9 in. 3 part Celery & Relish
3900/126	12 in. 3 part Celery & Relish
3900/129	3 pc. Mayonnaise Set
3900/130	7 in. 2 handled Fid. Bonbon
3900/131	8 in. 2 handled Fid. Bonbon Plate
3900/136	5½ in. Comport
3900/165	Candy Box & Cover
3900/166	14 in. Plate, r. e.
3900/671	Ice Bucket
3900/1177	Ice Bucket with chrome Handle
274	Chrome Ice Tongs (long)
278	Salt & Pepper Shaker (doz. pr.)
279	10 in. Bud Flower Holder
968	11 in. Fid. Flower Holder
1237	13 in. Fid. Flower Holder
1238	2 pc. Cocktail Icer
1299	9 in. Fid. Flower Holder
1309	12 in. Fid. Flower Holder
1603	11 in. Fid. Flower Holder
1617	5 in. Glode Flower Holder
3121	Hurricane Lamp (Etch. Chimney only)
8004	Hurricane Lamp (Etch. Chimney only)
6004	5¾ in. Blown Comport
6004	8 in. Fid. Flower Holder
6004	8 in. Fid. Flower Holder

Chantilly Fine Lace of
Rare Beauty

And CHANTILLY glassware—what name more appropriate for this beautiful sparkling Crystal.

An Etched design of delicate intricacy done with the skill and precision for which Cambridge Hand-made glass is famous.

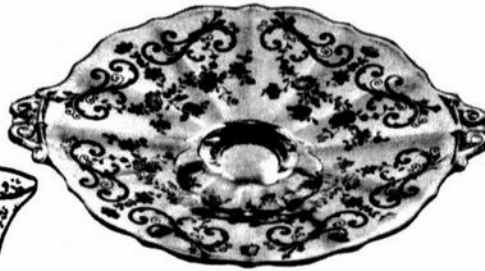
The Cambridge Glass Company
Cambridge, Ohio

ETCHED CHANTILLY

No. 49



3600—STEMWARE



3900/131
8 in. 2 handled Ftd. Bonbon Plate

No. 50



1349/647—CONSOLE SET

No. 51

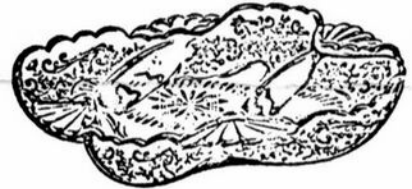


276—MAYONNAISE SET



3900/671
Ice Bucket with Chrome Handle

No. 52



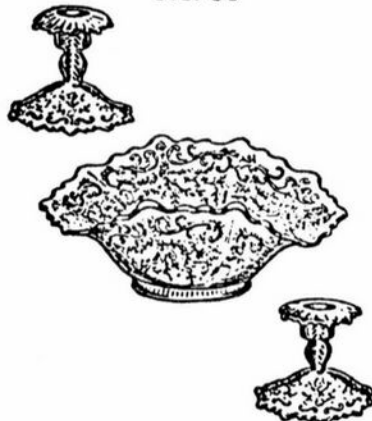
209—RELISH

No. 53



3600—GOBLET

No. 54



440/494—CONSOLE SET

3625—GOBLET



No. 55

STUDY Club News

continued from page 2

The program that evening was on Stems and quite a few were there for discussion.

After the Stem program there was the monthly raffle with lucky Tony Regan winning a 3½" crown tuscan Swan. Once a year Club members donate a piece of Cambridge for this raffle. All donations are nicely gift wrapped and it is fun to take your choice from the great looking group.

"Show & Tell" followed the raffle. Shared that evening was a pressed Rosepoint cone-shaped footed sherbet (ref: Nov.'78 C.B., pg. 6) with a carmen bowl; a set of stradivari wines in various colors, a crown tuscan hand painted Nautilus flower holder; a Cigarette Holder with lid in mandarin gold on a crystal foot; and a crystal etched "What's it?" that left us baffled as to the manufacturer.

Next month's meeting will be held in the home of Betty and Herb Wanser.

submitted by Paula Ashby
Corresponding Secretary

P. O. Box Robbed

Sometime between the hours of 6 and 11 PM, February 16th, the N.C.C. Post Office Box was broken into and an undetermined amount of mail was taken. Four checks were recovered at a later time (minus their envelopes) when found on the sidewalk across from the Post Office.

Our Secretary, Janice Hughes had picked up the mail on the 15th, so it is hoped that the losses are minimal. If you mailed anything to N.C.C. during the week previous to February 16th, and have had no response by the time you read this, please write and let us know.

"This would be a wonderful world if we would all do as much today as we expect to do tomorrow." ----- UNKNOWN

we get letters

Have just received the CRYSTAL BALL and truly enjoyed your article on "Unique Ladies". I do not have any Unique Ladies in residence, but do have a Unique Boy. It is the Two-Kids in darkish orangey-pink. This was sold to me as a "Cambridge Figurine". Later I was advised by someone more knowledgeable that Cambridge did not make figurines and that this item was probably a cut down flower frog. The base was expertly cut, with slight bevel and ground and polished ring on bottom about 3/8" wide. There are enough small scratches to indicate this figure saw a lot of use. Always enjoy your articles --- especially "Prices Here & There".

Ramona Nelson, Illinois

EDITOR'S NOTE: Your "someone more knowledgeable" was probably quite right when they told you your figurine was a cut-down flower frog. The "Mystery" surrounding the flower holder shown in our December, 1978 issue, has been solved. While in Florida last month attending a Show, we were approached by a gentleman and his wife, who claim they purchased that particular Holder shortly after it had been broken. They took it home and he ground it down, so it would fit together, as he hated to dispose of it. As stated in the article, these pieces are definitely "unique", but evidently not "rare". Thanks for kind words concerning "Prices" article's. Would gladly write it again if members would send in information.

Sorry time has not permitted Al and I to attend the meetings. We truly miss it. In the Wildflower etch I have the #P101, 32oz Decanter in crystal. Also the globe to the #1613 Hurricane Lamp with the Wildflower etch in gold. Hope this helps collectors of Wildflower.

Mary Jane Miller, Penna.

EDITOR'S NOTE: Reference for these two pieces is as follows: NCC 49-53, page 5 for the 32oz Cocktail Shaker and page 15 for the Globe.

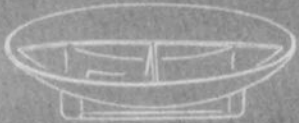
"The smallest good deed is better than the grandest good intention." -- DUGUET



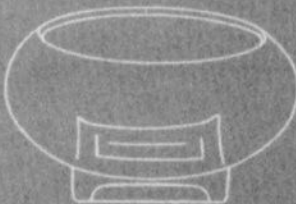
No. 3797/125
8" 3-PART RELISH



No. 3797/27
6½" SALAD BOWL



No. 3797/126
10" 3-PART CELERY AND RELISH



No. 3797/36
9½" CUPPED ROSE BOWL



No. 3797/20
6" BREAD AND BUTTER



No. 3797/22 — 7" SALAD PLATE



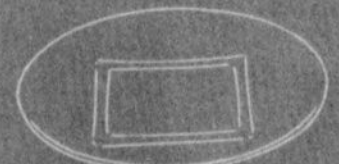
No. 3797/35
7½" CUPPED ROSE BOWL



No. 3797/85 — DECANTER



No. 3797/23
7" SALAD AND DESSERT PLATE



No. 3797/25
9½" DINNER PLATE



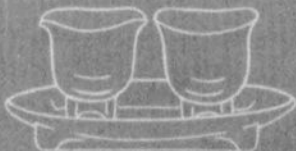
No. 3797/47 — 8" BONBON



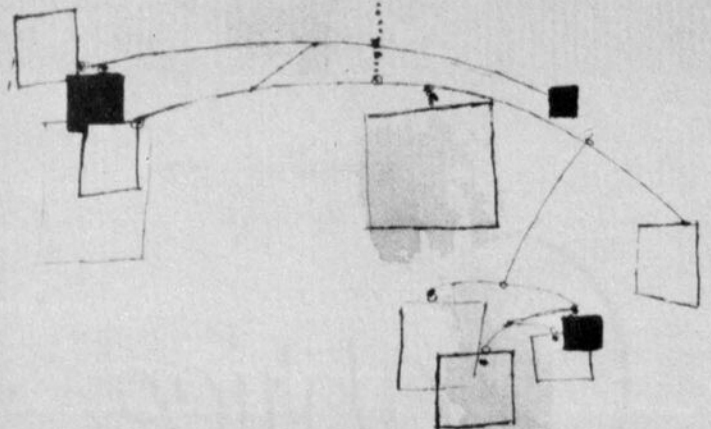
No. 3797/40
IND. SUGAR AND CREAM



No. 3797/41
SUGAR AND CREAM



No. 3797/42 — IND. 3-PIECE
SUGAR AND CREAM SET





No. C-300 - LOW SHERBET



No. C-300 - CLARET



No. C-300
10 OZ. FOOTED TUMBLER



No. C-300 - WINE



No. C-300 - LOW COCKTAIL



No. C-300
5 OZ. FOOTED TUMBLER



No. C-300 - CORDIAL



No. C-300/2
12 OZ. ICE TEA, STEMMED



No. C-66
13" CRIMPED BOWL, 4 FOOTED



No. C-301 - CORDIAL

Caprice



No. C-301 - 12 OZ. ICE TEA

No. C-300 — GOBLET



No. C-300 — COCKTAIL



No. C-301 — GOBLET



No. C-300 — TALL SHERBET



No. C-301 — SHERBET



No. C-301 — COCKTAIL



No. C-301 — WINE



No. C-301 — CLARET



No. C-301 — 5 OZ. JUICE



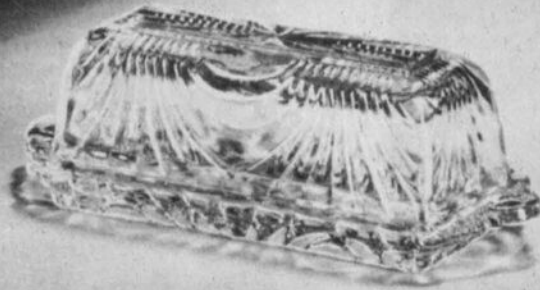
No. C-301 — LOW COCKTAIL



No. C-310
10 OZ. TABLE TUMBLER



No. C-310 — 12 OZ. ICE TEA



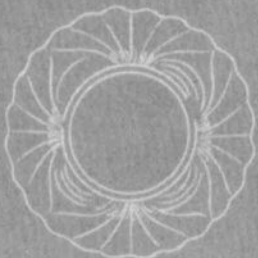
No. C-52 — BUTTER AND COVER



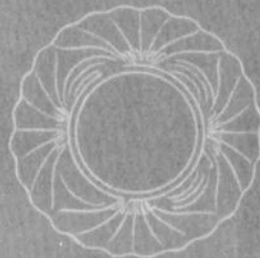
No. C-1338
3-LITE CANDLESTICK



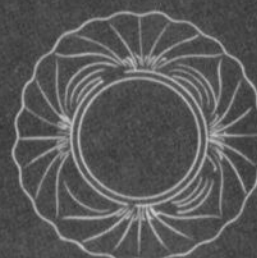
No. C-647 — 2-LITE CANDLESTICK



No. C-22 — 5 1/2" SALAD PLATE



No. C-23 — 7 1/2" SALAD PLATE



No. C-24 — 9 1/2" DINNER PLATE



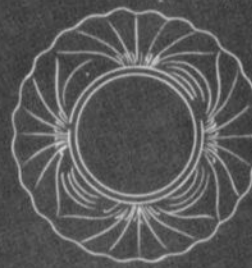
No. C-38 — SUGAR AND CREAM



No. C-96 — SALT AND PEPPER



No. C-40
IND. SUGAR AND CREAM



No. C-21
6 1/2" BREAD AND BUTTER PLATE



No. C-17 — CUP AND SAUCER



No. C-151 — 5" JELLY



No. C-130 — 7" LOW COMPORT



No. C-53
10 1/2" CRIMPED BOWL



No. C-39
3-PIECE SUGAR AND CREAM

Want Study Groups

Interest in Study Group membership is continuing to grow. Listed below are members interested in starting a Study Group in their area. If you share this interest, please contact the person nearest you by either phoning or writing them c/o N.C.C., P. O. Box 416, Cambridge, Ohio 43725.

CALIFORNIA - Beverley Hanson

CONNECTICUT, New England or New York area
- Barbara Hellman

INDIANA, North Central area
- Kenneth Cook, 219-653-2511

MICHIGAN, Burton, Flint area
- Clara K. Brown

MARYLAND - Faith Lasher

OHIO, Cleveland area
- JoAnne Wegman, 216-351-0799
Mentor area
- Raymond W. Pyle
Hide-A-Way Hills area
- Virginia Dutcher

OREGON - Joyce Dawson

VIRGINIA, Williamsburg area
- John Grubb

AN OPEN INVITATION

Don and Jane Rogers wish to extend an invitation to any NCC members traveling I-70 near St. Louis, MO. to stop by for a "Cambridge Glass" visit. Telephone them at - 314-327-8819 for directions!

Classified

FOR SALE: "ROSEPOINT" #3500, 5 water \$19, 5 champagne \$18, 7 #3900/22 salad \$20. Wildflower #3121, 1 water \$19. All prices each, Postage and Insurance extra. The Seekers, 9014 Roos Road, Houston, Texas 77036.

FOR SALE: #3400/108, 80 oz. Ball shape Cocktail Shaker with #5 top, MINT, Diane etching \$225. Pair 4" Ram's Head candlesticks, crown tuscan \$150. 2 Banquet Goblets, crystal figure, mandarin gold bowl \$85 each. 3 oz. ebony figure Cocktail, crystal bowl and foot \$65. 12" amethyst vase, key-hole base \$27. Royal blue Ivy Ball, key-hole base \$35. Don Weaver, 20415 Harvest Ave., Lakewood, California 90715. Phone: 213-924-1727.

WANTED: CAMBRIDGE, light blue, Cleo. Need 3 cups and saucers, and 1 tall sherbet. Judy Johnson, 20632 Blackhawk Street, Chatsworth, California 91311.

WANTED: Unusual CAMBRIDGE CAPRICE pieces in crystal, blue, pink, pistachio, cobalt, amethyst, ruby, amberina, forest green, amber, smoke, teal blue, yellow, mandarin gold and Alpine pieces in the above colors. E. A. Vimmer, P. O. Box 235, Westchester, Illinois 60153.

NOTICE: Will the nice couple from New York please write again and send me your address. In moving, your letter has been misplaced and I would like to write to you. Doris Isaacs, 3800 Fuchsia Circle, Seal Beach, California 90740.

11th Annual Antiques Show and Sale

Sponsored by

Beta Sigma Phi Sorority of Reynoldsburg, Ohio

SATURDAY, MARCH 10, 1979 11 A.M. - 9 P.M.

SUNDAY, MARCH 11, 1979 12 NOON - 6 P.M.

Arts and Crafts Building - Ohio State Fairgrounds

Exit 17th Ave I-71 Columbus, Ohio

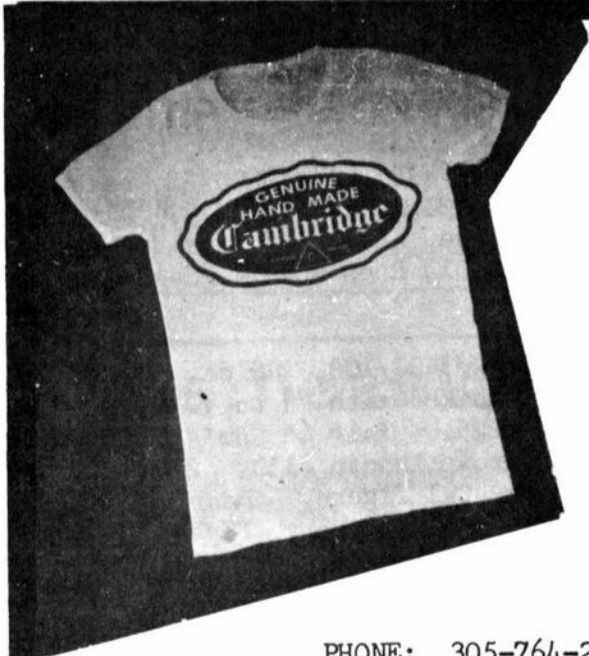
Show Chairman
Mrs. Murray Youtz

1519 Lexdale Drive
Reynoldsburg, Ohio 43068

BENEFIT: REYNOLDSBURG POLICE DEPT.
FRIENDS OF PICKERINGTON PARK

Donation \$1.25

Show Manager
George Hoffman
129 S. Fourth Street
Newark, Ohio



T Shirts by Brandt

AN IDEAL GIFT FOR THE CAMBRIDGE COLLECTOR

A YELLOW T-SHIRT WITH A BLACK CAMBRIDGE SEAL!

FIRST QUALITY — SPECIAL \$7.50 each
(includes postage and handling)

The T-Shirt you saw at the Cambridge

Convention is now available in men's and
women's sizes!

PHONE: 305-764-2063

ORDER NOW: Send your check or money order (\$7.50 for each shirt) to:

T-Shirts by Brandt, 1305 N. W. 1st Avenue, Fort Lauderdale, Florida 33311

Please specify size when ordering: WOMEN: sm., med., lg. MEN: med., lg., x-lg.

GEORGE HOFFMAN, ANTIQUES — ART GLASS —

129 SOUTH 4TH STREET
NEWARK, OHIO 43055

(P. O. Box 614)

TELEPHONE
614-345-8550

- | | |
|--|----------|
| 1. #1320 Decanter, 14 oz. _____ | \$ 18.00 |
| 2. #1402/49 Tally-Ho Jug, 88 oz., royal
blue _____ | 55.00 |
| 3. #3400/38 Ball Jug, 80 oz., mandarin
gold _____ | 35.00 |
| 4. #3126 Comport, tall 5½", emerald _____ | 27.50 |
| 5. #3126 Comport, tall 5½", amethyst _____ | 25.00 |
| 6. #1234 Vase, 12", ftd., amber _____ | 25.00 |
| 7. #1236 Ivy Ball, royal blue _____ | 40.00 |
| 8. #3400/98 Creamer, ebony _____ | 15.00 |
| 9. Everglades Cream & Sugar w/silver base,
marked "Sterling" (set) _____ | 30.00 |
| 10. #1337 Cigarette Holder, amethyst _____ | 20.00 |
| 11. Dinner Set: 6 each, 8" plates, cups and
saucers, plus cream & sugar - all 20 pcs.
marked, pink w/#520 etch (all) _____ | 82.50 |
| 12. Top Hat Cigarette Holder, royal blue _____ | 15.00 |
| 13. #1402 Celery, oblong, carmen _____ | 27.50 |
| 14. #3400 Cream & Sugar, opal (set) _____ | 40.00 |
| 15. #1066 Ivy Ball, ftd., 7", crystal _____ | 18.00 |
| 16. #3400/68 Cream & Sugar, carmen _____ | 25.00 |
| 17. #2860 Cream & Sugar (set) _____ | 22.50 |
| 18. Tray for Keg Set, ebony _____ | 17.00 |

SHIPPING \$2 — OHIO RESIDENTS ADD 4½% SALES TAX — SASE

OBSESSION IN DEPRESSION

THE AMERICAN DEPRESSION ERA COLLECTOR

Published for the buying, selling and trading
of Depression Glass.

1 year \$7 00
2 years \$13 00
CANADIAN RATES \$9 00 PER YEAR



Payable to:
Obsession
20415 Harvest Ave.
Lakewood, Calif. 90715

All issues of the "Obsession" will be mailed on the 25th of each month

NAME

ADDRESS

CITY STATE ZIP

DEALERS



DIRECTORY

<p>ANTIQUÉ ALLEY 24815 Broadway Bedford, Ohio 44146 216-232-7739 ---- Marie Spagnola CAMBRIDGE GLASS ROYAL DOULTON</p>	<p>BENICIA ANTIQUE SHOP 305 First Street Benicia, California 94510 OPEN 11 AM - 5 PM Closed Monday</p>	<p>CHARLES MIKULIK Box 416 Elizabeth, N. J. 07207 Phone 201-372-1101 BY APPOINTMENT ONLY!</p>
<p>CHURCH STREET ANTIQUES 6 Church Street Boston, Massachusetts 02116 George or Frank --- 617-426-1048 CAMBRIDGE, HEISEY, GENERAL LINE</p>	<p>Z. E. LOPES - 707-745-0978 VISIT HISTORIC BENICIA and its 28 shops Off Interstate #80 ----- ----- North of San Francisco</p>	<p>Always buying CAMBRIDGE BLUE CAPRICE in blown or unusual pieces only. CARRY MOST TYPES OF ANTIQUES</p>
<p>D & D ANTIQUES 184 East Nossuth Street (GERMAN VILLAGE) Columbus, Ohio 43206 DICK SLIFKO ----- 614-443-6020</p>	<p>GREEN ACRES FARM 2678 State Route 310 North Pataskala, Ohio, 43062 Sat. & Sun. 1-6 PM ---- W. Bryan CAMBRIDGE & HEISEY - 614-927-1882</p>	<p>FINDER'S KEEPER'S ANTIQUES P.O. Box 303 P.O. Box 16023 Dayton, O. Columbus, O. 45401 43216 513-254-2937 614-965-1906 SPECIALIZING IN CAMBRIDGE GLASS!</p>
<p>SWISS HILLS COLLECTIBLES Mary & Wilbur Henderson 303 Guilford Avenue Woodsfield, Ohio 43793 Mail & Shows -- 614-472-1133 SPECIALIZING IN CAMBRIDGE GLASS!</p>	<p>THE MOUSE HOUSE ANTIQUES Route 22 East Cambridge, Ohio 43725 Shirlee Bistor --- 614-432-3132 SPECIALIZING IN GLASSWARE!</p>	<p>HOBBY HOUSE ANTIQUES Rt. #1, Cambridge, Ohio - 43725 614-432-6971 -- Lena Barnes Take Rt. #209 W. From Cambridge To RT. #658 - NORTH 1½ MILES</p>
<p>THIS 'N' THAT PLACE 101 South Street Chagrin Falls, Ohio -- 44022 Lue Koerper ----- 216-247-4938 OPEN THURS.-SAT. -- 10 AM - 5 PM</p>	<p>GEORGE HOFFMAN ANTIQUES 129 South 4th Street Newark, Ohio 43055 --- 614-345-8550 ---</p>	<p>D'MARIE'S ANTIQUES US Rt. 1 - just South of Rt. 606 Thornburg, Virginia 22565 703-582-6220 ----- Jim Rankin OPEN EVERY DAY 10 AM to 6 PM</p>
<p>'OUR GLASS ANTIQUES Box 27, Wills Point, Tex. 75169 20th CENTURY COLLECTIBLES fea- turing CAMBRIDGE GLASS! Shows- No Lists - SASE Please - PAUL & GINNY HENDERSON -- 214-563-6971</p>	<p>OLD TOLL GATE ANTIQUES Route #5, Box 7X Milan, Illinois 61264 SPECIALIZING IN HAVILAND CHINA MATCHING SERVICE</p>	<p>OLDE TOWNE ANTIQUES 307 W. St. Louis Street Lebanon, Illinois 62254 Edith Zimmerman -- 618-537-4567 GENERAL LINE ANTIQUES</p>
<p>S & J ANTIQUES 5616 Hensel Woods Road Gahanna, Ohio 43230 Sue & Jack Rettig - 614-855-1711 CAMBRIDGE GLASS OUR SPECIALITY</p>	<p>Use Schlegers book numbers or send saucer for pattern match. SASE APPRECIATED Marie Baker ----- 309-787-2392 GENERAL LINE OF ANTIQUES</p>	<p>YOU CAN ADVERTISE YOUR ANTIQUÉ SHOP HERE! 1 inch - \$6 for six months</p>
<p>1886 HOUSE East Schodack, N. Y. 12063 MAIL and SHOWS Laurie Cruise - 518-477-5895 CAMBRIDGE-NORITAKE-AZALEA-D.G.</p>	<p>THE GLASS CUPBOARD 39 Shire Oaks Drive Pittsford, New York 14534 Marcia Ellis 716-586-7596 CAMBRIDGE ONLY --- SASE FOR LIST</p>	<p>M & M ANTIQUES & COLLECTIBLES 310 N. Main - Box 417 Canton, Kansas 67428 The Martin's ----- 316-628-4705 SPECIALIZING IN CAMBRIDGE GLASS!</p>
<p>YOU CAN ADVERTISE YOUR ANTIQUÉ SHOP HERE! 1 inch - \$6 for six months</p>	<p>EVELYN M. ALLEN 135 Cynthia Street Heath, Ohio 43055 Mail Order & Shows 614-522-1635 SPECIALIZING IN CAMBRIDGE GLASS!</p>	<p>YOU CAN ADVERTISE YOUR ANTIQUÉ SHOP HERE! 1 inch - \$6 for six months</p>

12th ANNUAL
CAMBRIDGE, OHIO

Antique Show and Sale

APR 28 10:00 A.M. - 9:00 P.M.
APR 29 NOON - 6:00 P.M.

NATIONAL GUARD ARMORY
N. 10th ST. - McFARLAND DR.

A QUALITY SHOW WITH QUALITY DEALERS

FOOD BY SILVER COURT OF THE AMARANTH

CHARLES UPTON - MANAGER

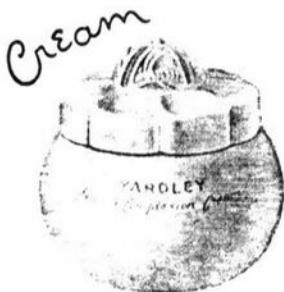
RFD 5 CAMBRIDGE, OHIO 43725

PH - 614 - 439 1983

YARDLEY'S

English Lavender

Yardley products for America are created in England and finished in the U. S. A. from the Original English Formulae, combining imported and domestic ingredients.



It is commonly believed that the Cambridge Glass Company made the jars for the Yardley Company. Is there anyone among our members who can shed further light on this subject?

(Ad sent to us from Pat Binkley)

National Cambridge Collectors, Inc.
Post Office Box 416
Cambridge, Ohio 43725

FIRST-CLASS MAIL
U.S. POSTAGE
PAID
So. Vienna, Ohio
45369
Permit No. 15

FIRST CLASS MAIL