

Cambridge Crystal Ball



ISSUE NO. 74

JUNE 1979

Published monthly by the NATIONAL CAMBRIDGE COLLECTORS, Inc.
To encourage and to report the discovery of the elegant and boundless product
of the Cambridge Glass Company, Cambridge, Ohio

Welcome To
CAMBRIDGE

4th Annual
NATIONAL CAMBRIDGE COLLECTORS
ANTIQUE SHOW & SALE
6th Annual Convention

Shenandoah Inn
INTERSTATE 70 - EXIT 186 - 7 MILES EAST OF
CAMBRIDGE, OHIO

MEMBERSHIP RENEWAL NOTICE
If the date on your address label is - - 6 - 79
This is your **LAST ISSUE** of the
CRYSTAL BALL. Please renew NOW!

JUNE 22, 23, 24, 1979

CAMBRIDGE CRYSTAL BALL

Official publication of National Cambridge Collectors, Inc., a non-profit corporation with tax exempt status. Published once a month for the benefit of its members. Membership is available for individual members at \$10 per year and additional members (12 years of age and residing in the same household) at \$3 ea. All members have voting rights, but only one CRYSTAL BALL will be mailed per household.

Back issues of the CRYSTAL BALL are available to members only, at a cost of 60¢ ea. or 12 issues for \$7.

1978-79 Officers & Committee Chairpersons

PRESIDENT ----- William C. Smith
VICE-PRESIDENT ----- George W. Hoffman
SECRETARY ----- Janice Y. Hughes
TREASURER ----- Ruby Landman
SERGEANT-AT-ARMS ----- George W. Hoffman
BUDGET & FINANCE ----- William C. Smith
BY-LAWS ----- George W. Hoffman
CONVENTION ----- George W. Hoffman
MEMBERSHIP ----- Josephine A. Barstow
MUSEUM ----- Arnold Lynd
PROGRAM & ENTERTAINMENT - Charles A. Upton
PROJECT -----
PUBLICITY ----- Don E. Armbrrecht
STUDY GROUP ADVISORY ---- Janice Y. Hughes

1979 ANTIQUE SHOW ----- William C. Smith
1979 CAMBRIDGE AUCTION ----- Lynn Welker

CRYSTAL BALL Editor ----- Phyllis D. Smith

CLASSIFIED ADVERTISING RATES

5¢ per word \$1.00 minimum

We cannot mix type size in classified advertisements. Abbreviations and initials will count as words. Payment in full must accompany all ads.

DISPLAY ADVERTISING RATES

	Members	Non-Members
1/8 page -----	\$ 4.00	\$ 6.00
1/4 page -----	7.00	10.00
1/2 page -----	12.00	18.00
3/4 page -----	17.00	25.00
Full page -----	22.00	33.00

DEALERS DIRECTORY

1" ad ----- \$6.00 for 6 months

Cambridge CRYSTAL BALL assumes no responsibility for items advertised and will not be responsible for error in price, description or other information.

Advertising copy must be in our hands by the 15th of each month to assure publication in our next issue. Advertisements containing reproductions will not knowingly be accepted unless clearly stated.

PLEASE ADDRESS ALL CORRESPONDENCE TO

Cambridge CRYSTAL BALL
National Cambridge Collectors, Inc.
P. O. Box #416
Cambridge, Ohio 43725

PLEASE NOTIFY US IMMEDIATELY OF ANY CHANGE IN YOUR ADDRESS!

Please enclose a self-addressed, stamped envelope when requesting information!!

STUDY Club News

STUDY GROUP #3 - SOUTHERN FLORIDA
"THE FLORIDA EVERGLADES"

The Florida Everglades Study Group held their meeting on April 17th in the home of John and Evelyn Knowles. There were 11 members and two guests present.

The program for the evening featured several "Cambridge Girls", including such names as Diane, Elaine, Marlene, Gloria, Portia, Lorna, Valencia, Cleo, Martha, and Minerva. Our hostess had assembled 9 of the 10 ladies mentioned for us to study. It is much easier to recognize these etchings once you have held them in your hand and examined them closely, rather than just looking at them in a book.

The next Study Group meeting will be our last one until summer is past, and it will be held in the home of Bob and Betty Bryner. The Program will be on Rosepoint.

submitted by Carroll Mellin
Secretary

STUDY GROUP #5 - SOUTHERN CALIFORNIA
"CALIFORNIA CAMBRIDGE COLLECTORS"

The California Cambridge Collectors met in the home of Fred and Ruth Eilenfield, on April 27th. There were 13 members and two guests present.

The meeting started with old and new business with members unanimously voting for a "silent auction" at our next meeting. All items for the auction will be contributed by the members and the money donated to the Cambridge Museum Fund. Items to be donated will be one piece of glass and one "collectable" each.

Tickets were then sold for the monthly raffle with Betty Wanser winning a forest green Martha Washington mug.

Ruth Eilenfield then presented an interesting program on Cambridge Shell items. The display table for the program contained many lovely items from Ruth's own collection and the collection of other members. Even knowing that Cambridge made many Shell items, it takes seeing a display to really see the enormous variety.

Rankin To Speak



DAVID, AND A FEW "CAMBRIDGE BLUES"

We are again fortunate in having for our Saturday morning Convention Speaker, Mr. David B. Rankin of Englewood, Ohio. David has chosen for his talk the very difficult subject "Cambridge Blues".

A native of New Concord, Ohio, Dave received his B.B.A. Degree from Ohio University, Athens, Ohio. Both he and his wife Susan have received their certification as Certified Public Accountants. He presently holds the position of Treasurer for Tait, Inc., Dayton, Ohio.

A member of NCC from it's inception, Dave has served this organization in many ways. He has served as a member of the Board of Directors, Convention Committee, Auction Committees, various Clinics, Budget and Finance Committees, and has joined Sue in donating their time and expertise to serve as Auditors for the Club during the years 1975 thru 1979.

A meticulous and tenacious student, David has contributed greatly to our awareness of the many facets of Cambridge information. He has graciously shared his knowledge of Cambridge glass with us via his very informative articles in the CRYSTAL BALL and in his well researched talks.

We are indeed fortunate to have Dave with us to share his information on this very controversial subject concerning the various shades and names that make up our beautiful "Cambridge Blues".

SIXTH ANNUAL CONVENTION National Cambridge Collectors, Inc.

June 22, 23, 24, 1979

ALL CONVENTION ACTIVITIES
will be held in the -

SHEANADOAH INN
P. O. Box 147, Old Washington, Ohio 43768
Phone - 614-489-5511

(Interstate 70 - Exit 186 - 7 Miles East of Cambridge, Ohio)

SCHEDULE OF EVENTS

FRIDAY, June 22nd

- 1:00 PM - 4:00 PM - REGISTRATION - Room 101
(ALL Convention Participants
----- MUST be Registered!)
- 6:00 PM - 9:00 PM - ANTIQUE SHOW & SALE -- PREVIEW
Main Ballroom
- DISPLAY ROOM OPEN - Room 100
- 9:30 PM - - "GET ACQUAINTED" Party
Banquet Room (Pay Bar)

SATURDAY, June 23rd

- 8:00 AM - 10:30 AM - REGISTRATION
8:30 AM - 10:30 AM - CONTINENTAL BREAKFAST
Banquet Room
- Guest Speaker - DAVID B. RANKIN
Englewood, Ohio
Topic - "Cambridge Blues"
- 11:00 AM - 6:00 PM - ANTIQUE SHOW & SALE
Main Ballroom
- DISPLAY ROOM OPEN - Room 100
- 1:00 PM - - SLIDE PRESENTATION - Room 101
"Cambridge Stems"
- 3:00 PM - - SLIDE PRESENTATION - Room 101
"Cambridge Candleholders"
- 6:30 PM - 7:30 PM - COCKTAIL HOUR (Pay Bar)
7:30 PM - - NCC ANNUAL CONVENTION BANQUET
Banquet Room
(Prime Rib of Beef)
- Guest Speaker - WILLIAM HEACOCK
Author and Executive Editor,
GLASS REVIEW, California
Topic - "The National Glass Co."

SUNDAY, June 24th

- 9:00 AM - - BUFFET BREAKFAST
NCC ANNUAL BUSINESS MEETING
Banquet Room
- "SHOW & TELL" (after meeting)
Moderators - Evelyn Allen,
Joanne Paul and Lynn Welker
- 12 Noon - 6:00 PM - ANTIQUE SHOW & SALE
Main Ballroom
- 12 Noon - 4:00 PM - DISPLAY ROOM OPEN - Room 100
- 1:00 PM - - FILM PRESENTATION - Room 101
"The Crystal Lady"
- 4:00 PM - 6:00 PM - DISPLAY ROOM WILL BE CLOSED
(Please pick up Display Glass)

Let's Get Acquainted

by Phyllis Smith



The latest name to be added to those who serve as members of your Board of Directors is that of Willard P. Kolb.

It is with pleasure that we introduce you to Mr. Kolb, so that you may become better acquainted with him. Of course everyone attending the Convention this year will be seeing him at sometime during the weekend, as he is chairman of this year's Display Room, and will undoubtedly be spending a lot of time there.

Willard hails from St. Clairsville, a nice little city located in southeastern Ohio, which is also the county seat of Belmont County. There, on April 16, 1933, he was born, the eldest son of Phillip and Mary Kolb. Willard is third from the oldest in a family of six children. A farm boy at heart, he recalls many happy times spent as a young man working on his parents and grandparents farms.

In 1951 Willard graduated from St. Clairsville High School. He served in the Army for two years (1956-58), spending most of that time in Germany.

The date of April 16th is one that he does not easily forget, because not only is it his birthday, but on that date in 1960 he made the former Miss Norma Deem his bride. Norma also was raised in St. Clairsville so it was natural that they continue to make it their home. They are the proud parents of three children, Lisa 18, David 15 and Lynn 13.

Willard has been employed by Clifford Motors Corp., of St. Clairsville, for the past 26 years. His present position is that of Manager for their Retread Plant and Tire Dealership.

Besides his interest in Cambridge glass, Willard has several hobbies, one of which is reading. He is especially interested in any books containing History or information of any kind concerning WWII. He is also happy when he can involve himself in a job of refinishing furniture. There are several pieces in the Kolb home of which he has every right to be proud.

The hobby that seems to hold the most fascination for Willard is his interest in museums. This interest is also shared by Norma, and much of their vacation time has been spent visiting museums. In fact this interest is partially responsible for his involvement in NCC. Several years ago Willard attended several Glass and Antique classes being held at the Olgesby Museum in Wheeling, W. Va. Here is where his interest in Cambridge glass got it's start and it wasn't long until he received a membership application from Wilbur and Mary Henderson and he and Norma became NCC members in May, 1977.

Since joining NCC Willard has attended all of our Quarterly Meetings, etc., and now that he is a member of the Board of Directors he is hoping to be of benefit by putting his hobby to use and helping make our Museum become a reality. This is exactly the kind of enthusiasm needed in our organization and we can all appreciate the value of a man such as this serving on our Board of Directors.

MOTEL INFO

Word has it that reservations are being filled quite rapidly. If you haven't made yours yet, it is suggested that you do so very soon.

Remember that "Special" rates will be provided to those who specify NCC affiliation when either writing or phoning the Shenandoah Inn Motel, P. O. Box 147, Old Washington, Ohio 43768 — 614-489-5511.

we get letters

Dear Phyllis, I am enclosing a "before" and "after" photo of a pair of lamps we got at a local auction this past fall. When we found them, they were entirely sprayed with gold paint, as the one on the left. Not being familiar with the Cambridge Dresden Lady, other than in books, I immediately believed them to be these (wishful thinking!). After we got them home and checked the book, I was rather disappointed to learn that they are not Cambridge.

With patient soaking and scrubbing, I got all of the paint off of one of them, and you can see the result on the right in the photo. We got these for a reasonable sum, but it could have been an expensive lesson as I was prepared to bid much higher. Maybe if you could print the photo in the CRYSTAL BALL, it would prevent other mistakes.

I would just love to know anything that anyone might know about these lamps: origin, date, value, etc.

Dick and Elaine Storck
Minnesota

Dear Dick and Elaine, Since your photo is in color, it is hoped that it will reproduce well enough for everyone to get a



THESE LAMPS ARE NOT CAMBRIDGE!!!

good view of your lamps. I am sorry that I cannot answer your questions concerning the maker, etc., of these lamps, but it is hoped that some of our members will be able to do so.

It is impossible to be a collector of anything and not make an occasional mistake. But when we can learn by our mistakes they usually turn into a plus, and a valuable learning experience, as this seems to have been in your case.

In one of the early issues of the CRYSTAL BALL (March 1974, Issue 11) an article entitled "Patterns" by Ruth Forsythe, contained the following information concerning our Cambridge Dresden Figure.

"Just don't want you to ever pass up a DRESDEN FIGURE as she is one of the beautiful greats of the Cambridge Glass Co.

Have never heard of the figure being marked, so one has to carry a mental picture of her. Have only seen her in all clear and satin finish with clear face, neck and arms. She wears a tiered full skirt dress which is cut low and has short sleeves. She carries a purse which hangs from her right wrist. Her hat is the bonnet type which exposes her hair at the front and above the ears.

The DRESDEN FIGURE came as just the figure and also with an ebony base with a hole in the center so the figure could be used as a lamp.

Difficult to find, but not impossible to find."

THIS LAMP IS CAMBRIDGE!



11233—Dresden Figure with
Ebony Base for Lamps
(Base has 1/2 in. Hole in Center)

The two pictures of the Dresden Figure shown here and on the next page have been taken from the Welker Catalog Reprint I. We do not have a date to give you at this time as to when these were produced.

see next page

When comparing the Cambridge Figure with your lamp, it is easy to see differences, but unless you have really studied the two closely it is very easy to understand how one could make a mistake.



As you have undoubtedly noted,

Ruth said in her article that she had "only seen her in all clear and satin finish with clear face, neck and arms". It sometimes is a bit hard to realize how much we have been able to learn about this beautiful glassware in such a short period of time. When Ruth wrote her articles, there was very little information available for us to study, and of course, NCC had only been in existence for 11 months.



It is not surprising that she had never seen the Girl Figure shown here (taken from the NCC 1949-1953 Reprint) in milk glass. Actually, very few have been seen yet today.

As you said in your letter, and I do agree with you, it is hoped that your experience with the Dresden Girl Figure will be of help to others in identifying one of these lovely ladies. I am sure many of our members join with me in thanking you for taking the time to write and send us this information. ----- Phyllis

Dear Phyllis, When growing up and hearing about Cambridge, Ohio from my family, then learning to appreciate my Grandmother's crystal - Marjorie (1910) brought because it is my mothers name, Marjorie Mahaffey Reunells, it's not at all surprising that

Since I've inherited it as my own, I'm really "hooked" on Cambridge!

I've thoroughly enjoyed the CRYSTAL BALL this past year and look forward to the Michigan Flea Markets and Antique Shows this coming summer season. However, my pattern seems to be a difficult one to find. I've never seen any reference to this very old crystal in your "our" paper.

Could you please include in the future some information about this lovely pattern? Naomi Gamble, a close friend of the family, has also been a great help to me. It would be a real thrill to open the CRYSTAL BALL and see more about Marjorie. (Not Marjorie NearCut!!)

Elizabeth Speicher
Michigan

Crystal Ball Staff: Is it possible to run some reprints of Etched Marjorie from any old catalogs. I've enjoyed all the pictures of Square. Keep up the good work.

Chuck Eyen
Ohio

Dear Elizabeth and Chuck, The next two pages are just for you!! Of course, we hope the rest of our members will enjoy them also.

Information on the old etched Marjorie is almost non-existent. If you have a copy of Welker's Reprint I, you can see on page 92 the only other page of etched Marjorie (aside from the two reprinted here) known to exist. All three pages have been reprinted through the courtesy of Tom Mosser, the owner of the old original catalog.

This old catalog has the information on its front cover that it is "Catalog No. 10" of The Cambridge Glass Co., manufacturers of Pressed and Blown Tableware and Specialties for Export and Domestic Trade. Patented Brand Pressed Tableware "Nearcut" patented Trade Mark "Cambridge Crystal" thin blown Tumblers and Stemware. There is no date on this catalog.

I hope that these two pages will be of help to you both in your study of this lovely Cambridge glass pattern. Thanks for writing. ----- Phyllis



No. 7606. 6 oz.
Saucer Champagne
or Tall Sherbet



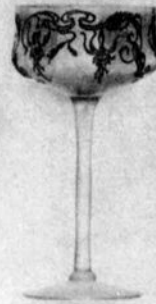
No. 7606. 6 oz.
H/H Champagne
Cut Stem



No. 7927. 5 oz.
H/S Champagne
Cut Stem



No. 7606. 2 oz.
Creme de Menthe, Long Stem
No. 7606. 2 oz.
Creme de Menthe, Short Stem



No. 7606. 3 oz.
Cocktail, Long Stem
No. 7606. 3 oz.
Cocktail, Short Stem



No. 7606. 2 oz. Sherry



No. 7606. 8 oz.
Ale Tumbler



No. 7606. 5 oz.
Champagne Tumbler



No. 8851. 1 1/2 oz.
Whiskey
Half Sham



No. 7606. 1/2 oz.
Cordial



No. 7606. 1 oz.
Pousse Cafe



No. 7606. 3/4 oz.
Brandy



No. 7606. 10 oz.
Hotel Tumbler



No. 7606. 10 oz.
Table Tumbler



No. 7606. 10 oz.
Tumbler



No. 7606. 12 oz.
Tumbler



No. 7606. 14 oz.
Tumbler



No. 7606. 16 oz.
Tumbler



No. 7606. 20 oz.
Tumbler



No. 7606. 26 oz.
Tumbler



No. 7606. 10 oz.
Goblet



No. 3223. 9 oz.
Goblet



No. 7606. 9 oz.
Goblet



No. 7606. 8 oz.
Goblet



No. 7606. 6 oz.
Champagne
Goblet



No. 7606. 4 1/2 oz.
Claret or Hock
Long Stem
No. 7606. 4 1/2 oz.
Claret or Hock
Short Stem



No. 7606. 2 1/2 oz.
Port Wine



DEEP PLATE ETCHED "MARJORIE"



No. 5000. 4 in. Ftd Nappy



No. 7606. Grape Fruit
Grape Fruit Liner Inside



No. 7606. 5 1/8 oz. Cafe Parfait



No. 7606. 6 oz. Fruit Salad
or Footed Sherbet



No. 4002. 20 oz.
Night Bottle and Tumbler



No. 5000. 8 in. Ftd Nappy



No. 7606. Finger Bowl



No. 104. 38 oz. Jug



No. 4011. 4 in Nappy



No. 4011. 8 in. Nappy



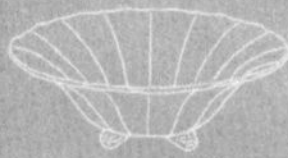
No. 103. Guest Room Jug and Tumbler
38 oz. Capacity



No. 17. Decanter, C/N., C/S.
28 oz. Capacity



No. 51. 54 oz. Jug



No. 3900/54 - 10" FOOTED BOWL



No. 3900/68 - 5" CANDLESTICK



No. 3900/72
6" 2-LITE CANDLESTICK



No. 3900/125
13 1/2" CHEESE AND CRACKER



No. 3900/115 - 13 OZ. TUMBLER



No. 3900/117 - 5 OZ. TUMBLER



No. 3900/74
6" 3-LITE CANDLESTICK



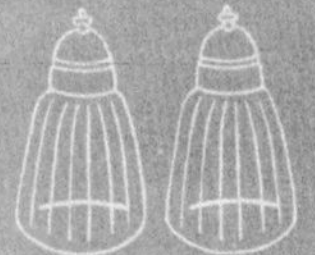
No. 3900/117 - 20 OZ. JUG



No. 3900/100 - 6 OZ. OIL



No. 3900/75 - EPERGNE



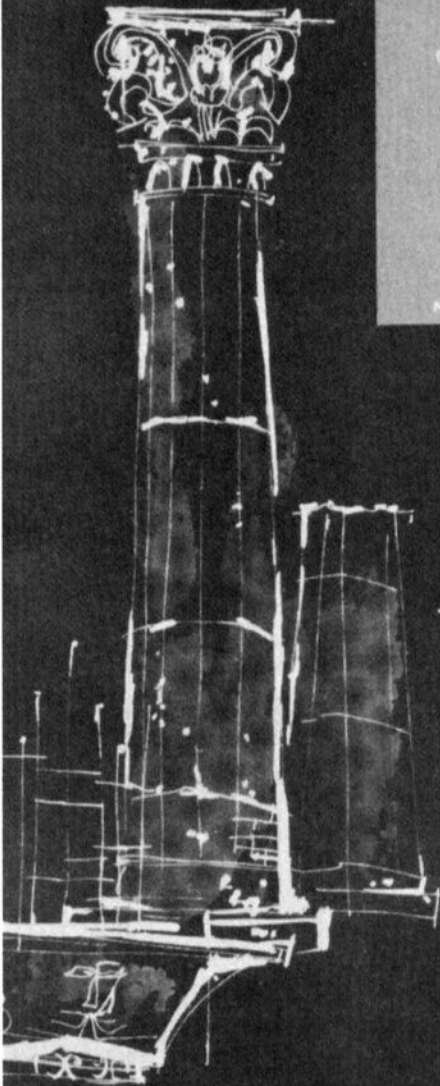
No. 3900/1177 - SALT AND PEPPER



No. 3900/131 - 8" BONBON PLATE



No. 3900/165
CANDY BOX AND COVER



Pristine



No. P-1937 — 5 OZ. FRUIT JUICE



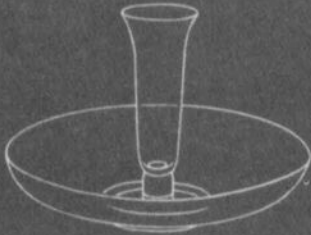
No. P-1937 — COCKTAIL OR WINE



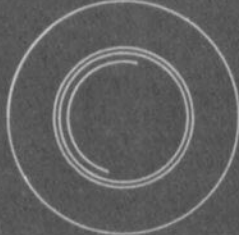
No. P-1937 — CORDIAL



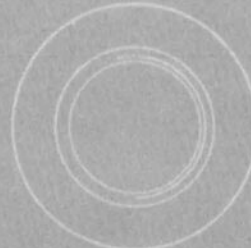
No. P-1937 — GOBLET



No. P-437
13" 2-PIECE FLOWER CENTER



No. P-555 — 7½" SALAD PLATE



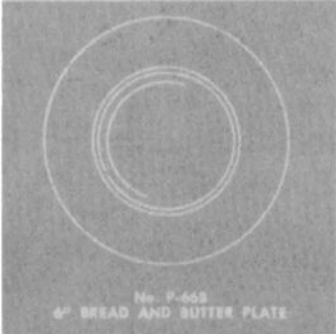
No. P-556 — 9" SALAD PLATE
No. P-819 — 9½" DINNER PLATE



No. P-1937 — SHERBET



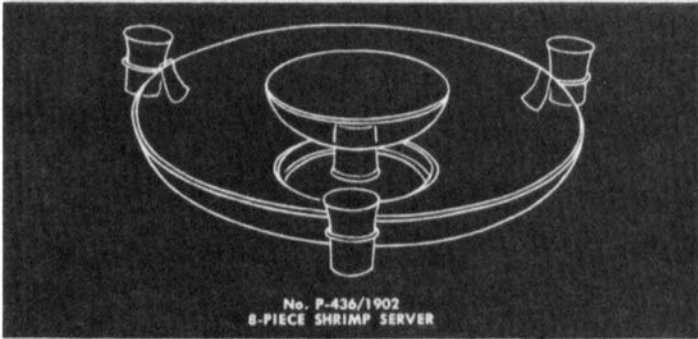
No. P-1937 — 12 OZ. ICE TEA



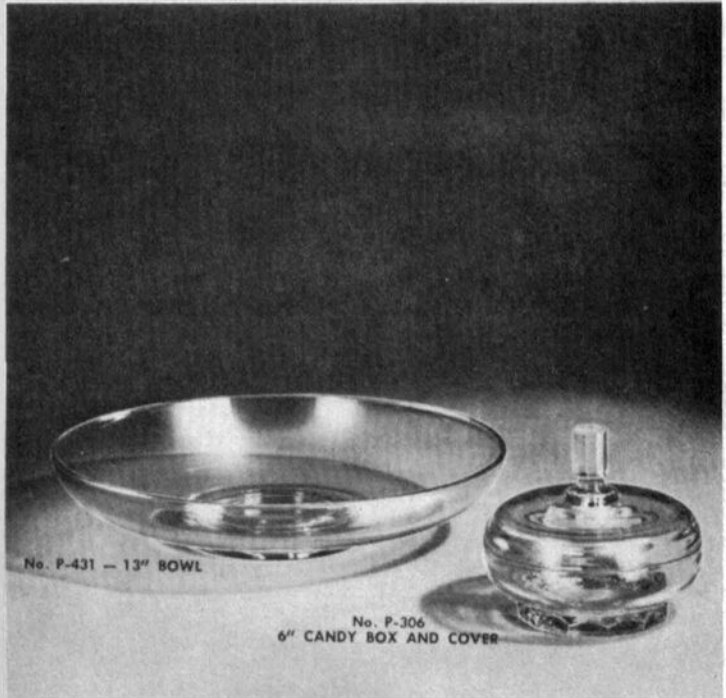
No. P-448
6" BREAD AND BUTTER PLATE



No. P-933 — CUP AND SAUCER



No. P-436/1902
8-PIECE SHRIMP SERVER

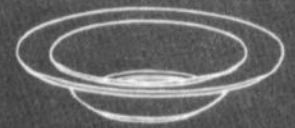


No. P-431 — 13" BOWL

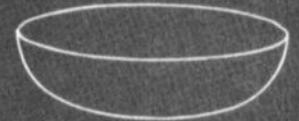
No. P-306
6" CANDY BOX AND COVER



THE CAMBRIDGE GLASS COMPANY, CAMBRIDGE, OHIO, U. S. A.



No. P-381 — 8 1/2" RIM SOUP



No. P-1534 — 5" BLOWN NAPPY



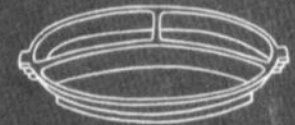
No. P-419 — 12" 2-PIECE RELISH



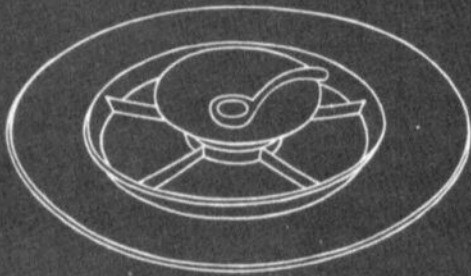
No. P-419 — 12" 6-PART RELISH
(No Center Cup)



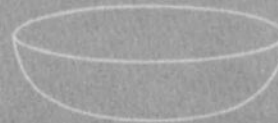
No. P-419 — SAUCE CUP



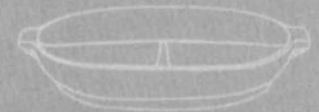
No. P-207
8" 3-PART RELISH TRAY



No. P-420 — 4-PIECE BUFFET SET



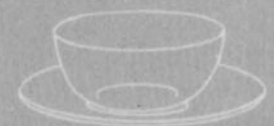
No. P-1535 — 6 1/2" BLOWN NAPPY



No. P-214 — 10" 3-PART RELISH



No. P-125 — 14" PLATE



No. P — FINGERBOWL AND PLATE

Aw, Ebon!

by Judy Johnson

Ebon, my dear Ebon
What have you to say?
I have questions galore
To pose to you today!

If an oyster had a cocktail
Would he need a cocktail icer?
If he ate it twice a day
Would it make him any nicer?

Would Pomona turn Green
If it got so much bolder?
That it smoked a cigarette
In a Farberware Holder?

If I drank Square-Etched Gin
Would it make my Bottle Bitter?
If I played a Varsity Sport
Would it make me any fitter?

Would Inverted Thistle
Hurt just the same?
Would a Rosepoint be a Rosepoint?
By any other name?

If I drank Champagne
Would I need a Bubble Stopper?
If I danced the Crystal Rock
Would I be a teeny bopper?

If my eyes were Gyro Optic
Would the light seem dimmer?
In the evening by the Moonlight
Are my Roses any Primmer?

When would a hurricane
Need a Hurricane Lamp?
If it used an Atomizer
Would it make the evening damp?

What is that, poor Ebon
What is that you say?
You're leaving town forever
And you're leaving right away?

JUNE 14, 15, 16, 17 1979

HEISEY COLLECTORS OF AMERICA
60 QUALITY DEALERS
AT
THE NEWARK HIGH SCHOOL GYM
NEWARK, OHIO
THURSDAY 9 A.M. - 8 P.M.
FRIDAY 12 P.M. - 5 P.M.
SATURDAY 12 P.M. - 8 P.M.
SUNDAY 1 P.M. - 5 P.M.
HEISEY GLASS DISPLAY
AT
THE YWCA
DONATION \$1.75
NINTH ANTIQUE SHOW AND SALE INC.

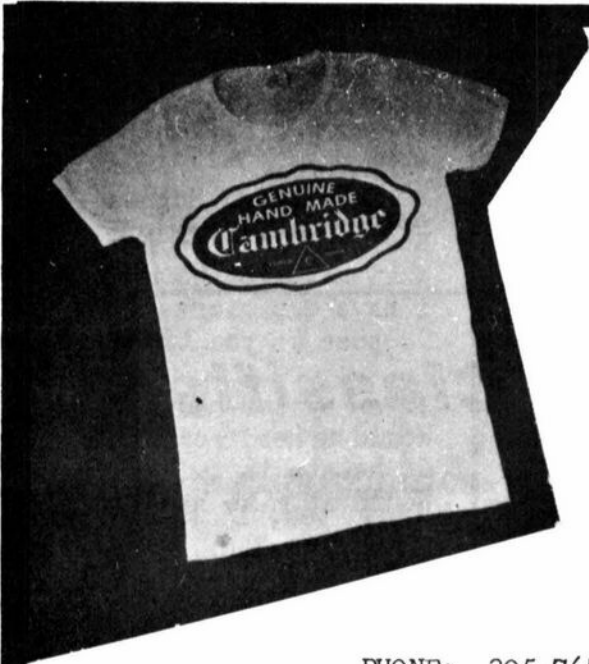
BENEFIT: THE NATIONAL HEISEY MUSEUM
25¢ OFF WITH THIS AD

STUDY Club News

continued from page 2

After the program, we held our "Show & Tell". Shared were the following items: a carmen #702 miniature Cornucopia; Swans, 3½" & 10" frosted with red beaks and black feet, 3½" signed amber and ebony; a Rosepoint milk Pitcher; Nude stem crystal oval Cigarette holder and a crown tuscan Ashtray; 2 Nude stem cupped comports, forest green w/Apple Blossom etch and crystal w/Diane etch; Cigar Humidor etched #739; #607 pink Cigarette Box w/dog figure in intaglio; ½ lb. amber Candy Jar etched #732 and a tall green Candy Jar w/pink Rose knob; a ritz blue Mt. Vernon Dolphin Candlestick; a 10" Cornucopia Vase w/Sterling base and Chantilly etch; and one member shared her find of 13 3½ oz. Wines, 11 1 oz. Cordials (#3121 Stems), and 12 8" plates, all with Rosepoint etching.

submitted by Paula Ashby, Corresponding Secretary



T Shirts by Brandt

AN IDEAL GIFT FOR THE CAMBRIDGE COLLECTOR
 A YELLOW T-SHIRT WITH A BLACK CAMBRIDGE SEAL!

FIRST QUALITY — SPECIAL \$7.50 each
 (includes postage and handling)

The T-Shirt you saw at the Cambridge
 Convention is now available in men's and
 women's sizes!

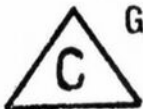
PHONE: 305-764-2063

ORDER NOW: Send your check or money order (\$7.50 for each shirt) to:

T-Shirts by Brandt, 1305 N. W. 1st Avenue, Fort Lauderdale, Florida 33311

Please specify size when ordering: WOMEN: sm., med., lg. MEN: med., lg., x-lg.

ERIE'S FIRST ANNUAL GLASS SHOW and SALE



FEATURING
Cambridge, Duncan & Miller, Heisey
 AND INCLUDING
 GLASS OF ALL PERIODS

AUGUST 25 & 26, 1979
 SAT. 1 p.m. to 9 p.m. - SUN Noon to 6 p.m.

FOSTORIA HILTON HOTEL • ERIE, PA.
 10th & State Streets
 [I-90 Exit 6 • 6 Miles North on Peach Street]



ADMISSION - \$1.75 • 25¢ DISCOUNT WITH THIS AD.
 CHILDREN UNDER 12 YEARS - FREE
 Door Prize Each Day

PROMOTION BY: Hank Pugliese - 814-456-7131

- Classified -

WANTED TO BUY: CAMBRIDGE CHANTILLY!
 Will buy 3 goblets, 3 iced teas, stem
 #3779. Also interested in other
 pieces. Please contact: Mary Marbach,
 P.O. Box 1112, Columbia, Missouri 65205
 Phone: 314-445-7126.

ETCHED "MARLENE"




Finger Bowl and Plate

DEALERS



DIRECTORY

<p>ANTIQUÉ ALLEY 24815 Broadway Bedford, Ohio 44146 216-232-7739 --- Marie Spagnola CAMBRIDGE GLASS ROYAL DOULTON</p>	<p>BENICIA ANTIQUE SHOP 305 First Street Benicia, California 94510 OPEN 11 AM - 5 PM Closed Monday Z. E. LOPES - 707-745-0978 VISIT HISTORIC BENICIA and its 28 shops Off Interstate #80 ----- ----- North of San Francisco</p>	<p>CHARLES MIKULIK Box 416 Elizabeth, N. J. 07207 Phone 201-372-1101 BY APPOINTMENT ONLY! Always buying CAMBRIDGE BLUE CAPRICE in blown or unusual pieces only. CARRY MOST TYPES OF ANTIQUES</p>
<p>CHURCH STREET ANTIQUES 6 Church Street Boston, Massachusetts 02116 George or Frank --- 617-426-1048 CAMBRIDGE, HEISEY, GENERAL LINE</p>	<p>GREEN ACRES FARM 2678 State Route 310 North Pataskala, Ohio, 43062 Sat. & Sun. 1-6 PM --- W. Bryan CAMBRIDGE & HEISEY - 614-927-1882</p>	<p>FINDER'S KEEPER'S ANTIQUES P.O. Box 303 P.O. Box 16023 Dayton, O. Columbus, O. 45401 43216 513-254-2937 614-965-1906 SPECIALIZING IN CAMBRIDGE GLASS!</p>
<p>D & D ANTIQUES 184 East Kossuth Street (GERMAN VILLAGE) Columbus, Ohio 43206 DICK SLIFKO ----- 614-443-6020</p>	<p>THE MOUSE HOUSE ANTIQUES Route 22 East Cambridge, Ohio 43725 Shirlee Bistor --- 614-432-3132 SPECIALIZING IN GLASSWARE!</p>	<p>HOBBY HOUSE ANTIQUES Rt. #1, Cambridge, Ohio - 43725 614-432-6971 -- Lena Barnes Take Rt. #209 W. From Cambridge To RT. #658 - NORTH 1½ MILES</p>
<p>SWISS HILLS COLLECTIBLES Mary & Wilbur Henderson 303 Guilford Avenue Woodsfield, Ohio 43793 Mail & Shows --- 614-472-1133 SPECIALIZING IN CAMBRIDGE GLASS!</p>	<p>GEORGE HOFFMAN ANTIQUES 129 South 4th Street Newark, Ohio 43055 --- 614-345-8550 ---</p>	<p>D'MARIE'S ANTIQUES US Rt. 1 - just South of Rt. 606 Thornburg, Virginia 22565 703-582-6220 --- Jim Rankin OPEN EVERY DAY 10 AM to 6 PM</p>
<p>BLACK ROOSTER ANTIQUES 1018 Clark Street Cambridge, Ohio 43725 614-432-3202 ----- M. Sipe CAMBRIDGE GLASS - GENERAL LINE-</p>	<p>OLD TOLL GATE ANTIQUES 600 North Avenue Milan, Illinois 61264 SPECIALIZING IN HAVILAND CHINA MATCHING SERVICE</p>	<p>OLDE TOWNE ANTIQUES 307 W. St. Louis Street Lebanon, Illinois 62254 Edith Zimmerman --- 618-537-4567 GENERAL LINE ANTIQUES</p>
<p>YOU CAN ADVERTISE YOUR ANTIQUÉ SHOP HERE! 1 inch - \$6 for six months</p>	<p>Use Schleigers book numbers or send saucer for pattern match. SASE APPRECIATED Marie Baker ----- 309-787-2392 GENERAL LINE OF ANTIQUES</p>	<p>YOU CAN ADVERTISE YOUR ANTIQUÉ SHOP HERE! 1 inch - \$6 for six months</p>
<p>1886 HOUSE East Schodack, N. Y. 12063 MAIL and SHOWS Laurie Cruise - 518-477-5895 CAMBRIDGE-NORITAKE-AZALEA-D.G.</p>	<p>THE GLASS CUPBOARD 39 Shire Oaks Drive Pittsford, New York 14534 Marcia Ellis 716-586-7596 CAMBRIDGE ONLY --- SASE FOR LIST</p>	<p>M & M ANTIQUES & COLLECTIBLES 310 N. Main - Box 417 Canton, Kansas 67428 The Martin's ----- 316-628-4705 SPECIALIZING IN CAMBRIDGE GLASS!</p>
<p>YOU CAN ADVERTISE YOUR ANTIQUÉ SHOP HERE! 1 inch - \$6 for six months</p>	<p>EVELYN M. ALLEN 135 Cynthia Street Heath, Ohio 43055 Mail Order & Shows 614-522-1635 SPECIALIZING IN CAMBRIDGE GLASS!</p>	<p>YOU CAN ADVERTISE YOUR ANTIQUÉ SHOP HERE! 1 inch - \$6 for six months</p>



4th Annual

ANTIQUE SHOW & SALE

(& 6th Annual XMAS Convention)

SHENANDOAH INN
INTERSTATE 70..EXIT 196 7 MILES EAST OF
CAMBRIDGE OHIO

JUNE 22, 23, 24, 1979

FRIDAY, JUNE 22nd 6:00 - 9:00
 (PREVIEW ADMISSION \$3.50)

SATURDAY, JUNE 23rd 11:00 - 6:00

SUNDAY, JUNE 24th 12:00 - 6:00
 (ADMISSION \$1.75)

OFFERING CAMBRIDGE AND OTHER FINE GLASSWARE
 ALONG WITH GENERAL LINES OF ANTIQUES

FOOD DOOR PRIZES PARKING

REMINDER

If you have not already done so, please take a few minutes right now and fill out your Advance Registration form and get it in the mail TODAY!

If you are planning to attend the Convention this year, it is very important that you return this form in order for us to have it by June 11th.

Also, won't you ladies who are planning to attend, please plan to help decorate at least one table for the Saturday evening Banquet. As this goes to press, we have heard from only 5 of you expressing your willingness to help! PLEASE DO YOUR PART and let us hear from you right away!

Plans are being made for YOUR enjoyment, but they cannot be completed without your help!

National Cambridge Collectors, Inc.
 P. O. Box #416
 Cambridge, Ohio 43725

FIRST-CLASS MAIL
 U.S. POSTAGE
PAID
 So. Vienna, Ohio
 45369
 Permit No. 15

FIRST CLASS MAIL