

Cambridge



Crystal Ball

ISSUE NO. 77

SEPTEMBER 1979

Published monthly by the NATIONAL CAMBRIDGE COLLECTORS, Inc.
To encourage and to report the discovery of the elegant and boundless product
of the Cambridge Glass Company, Cambridge, Ohio

Thoughts from the President - - - -

At the time of this writing we are awaiting the results of our recent efforts to raise funds for the Museum. We will not be able to pass these results along to you until next month.

We feel that some additional explanation is warranted due to the fact that the letters were sent out to you without any advance discussion of our intentions.

When the Museum Committee became aware of the property that is now under consideration, a flurry of activity started. A Special Board of Directors meeting was called so that the committee could determine from a broader view point as to whether this would be considered a desirable location. With a unanimous decision from the Board that an offer should be made, the committee entered into negotiations, thru the realtors, to determine at what price the structure could be ours.

At the same time, efforts were being aimed at arriving at cost figures for the necessary repairs and renovation that would be required to make this building meet the codes for public use.

There are at least three major considerations that will have to be taken care of before the building could be used as a museum that would be open to the public. The heating plant in the building is in need

of extensive repair or replacement, the electrical wiring would all have to be replaced, and there is considerable question as to the condition of the plumbing. It will also require a considerable amount of masonry repairs around the exterior as well as quite a bit of lawn and garden clean up.

The end result of these efforts boiled down to the situation that this property could make a very good location for our museum and that it would offer many of the features that we have been seeking in a building. It would offer potential display space in abundance, it offers work or storage space, a reasonable amount of parking could be provided, and is a structure of the same time frame as the Cambridge Glass Company. All, at a facility cost of from \$125,000 to \$150,000. The costs of furnishings and stock would be in addition to this.

Not having funds of this magnitude available, it became a question of how could we possibly proceed. The Board decision was that we would approach you with our possibility to determine if you also wanted a museum now.

Having a fairly good Museum Fund already started, it was decided that since all expenses would not have to be met at one time, we would set a goal of \$100,000. This would cover initial expenses and allow for the arranging of financing for additional expenses. If pledges in this magnitude are received from you we will proceed at this time. If not, we will be forced to rely on your judgement and seek other avenues. In either case, we will have gained valuable information as to your feelings for this venture.

It is your Club, and it will be your Museum, therefore it is only justice that it be your decision as to how we proceed.

Bill

MEMBERSHIP RENEWAL NOTICE
If the date on your address label is -- **9 - 79**
This is your **LAST ISSUE** of the **CRYSTAL BALL**. Please renew **NOW!**

CAMBRIDGE CRYSTAL BALL

Official publication of National Cambridge Collectors, Inc., a non-profit corporation with tax exempt status. Published once a month for the benefit of its members. Back issues of the CRYSTAL BALL are available to members only, at a cost of 60¢ each or 12 issues for \$7.

Membership is available for individual members at \$10 per year and additional members (12 years of age and residing in the same household) at \$3 ea. All members have voting rights, but only one CRYSTAL BALL will be mailed per household.

1979-80 OFFICERS & COMMITTEE CHAIRPERSONS

PRESIDENT William C. Smith
VICE-PRESIDENT Lynn Welker
SECRETARY Janice Y. Hughes
TREASURER Ruby Landman
SERGEANT-AT-ARMS George W. Hoffman
BUDGET & FINANCE William C. Smith
BY-LAWS
CONVENTION Lynn Welker
MEMBERSHIP Josephine A. Barstow
MUSEUM Arnold Lynd
PROGRAM & ENTERTAINMENT Frank Wollenhaupt
PROJECT Willard Kolb
PUBLICITY Don E. Armbrecht
STUDY GROUP ADVISORY John F. Rettig

1980 ALL-CAMBRIDGE AUCTION Lynn Welker
1980 ANTIQUE SHOW

CRYSTAL BALL EDITOR Phyllis D. Smith

CLASSIFIED ADVERTISING RATES

5¢ per word \$1.00 minimum
We cannot mix type size in classified advertisements. Abbreviations and initials will count as words. Payment in full MUST accompany all ads.

DISPLAY ADVERTISING RATES

	Members	Non-Members
1/8 page	\$ 4.00	\$ 6.00
1/4 page	7.00	10.00
1/2 page	12.00	18.00
3/4 page	17.00	25.00
Full page	22.00	33.00

DEALERS DIRECTORY

1" ad \$6.00 for 6 months

Cambridge CRYSTAL BALL assumes no responsibility for items advertised and will not be responsible for error in price, description or other information.

Advertising copy must be in our hands by the 15th of each month to assure publication in our next issue. Advertisements containing reproductions will not knowingly be accepted unless clearly stated.

PLEASE ADDRESS ALL CORRESPONDENCE TO
CAMBRIDGE CRYSTAL BALL
National Cambridge Collectors, Inc.
P.O. Box #416
Cambridge, Ohio 43725

PLEASE NOTIFY US IMMEDIATELY OF ANY CHANGE
IN YOUR ADDRESS!

Please enclose a self-addressed, stamped envelope
when requesting information!!

Club News

STUDY GROUP INTEREST

Interest in Study Group membership is continuing to grow. Listed below are members interested in starting a Study Group in their area. If you share this interest, please contact the person nearest you by either phoning or writing them c/o N.C.C., P.O. Box 416, Cambridge, Ohio 43725.

CALIFORNIA Beverley Hanson

CONNECTICUT
New England or New York area Barbara Hellman

INDIANA
North Central area .. Kenneth Cook, 219-653-2511

MICHIGAN
Burton, Flint area Clara K. Brown

MARYLAND Faith Lasher

OHIO
Ashland, Galion, Mansfield or Mr. Vernon area .
D. D. Rummell
Cleveland area JoAnne Wegman, 216-351-0799
Mentor area Raymond W. Pyle
Hide-A-Way Hills area Virginia Dutcher

OREGON Joyce Dawson

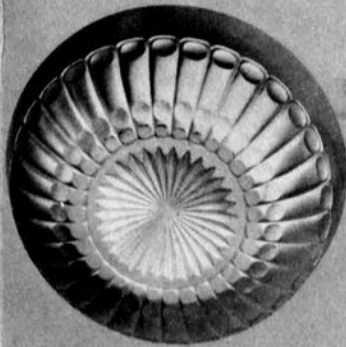
PENNSYLVANIA
Pittsburgh area Phyllis T. Freier

VIRGINIA
Williamsburg area John Grubb

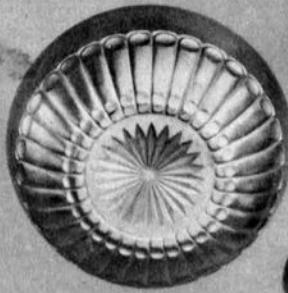
WASHINGTON
Seattle area Glenita E. Stearns

AN OPEN INVITATION

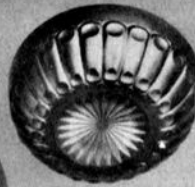
Don and Jane Rogers wish to extend an invitation to any NCC members traveling I-70 near St. Louis, MO. to stop by for a "Cambridge Glass" visit. Telephone them at 314-327-8819 for directions!



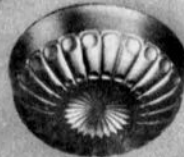
No. 47
8 1/4 inch Deep Bowl



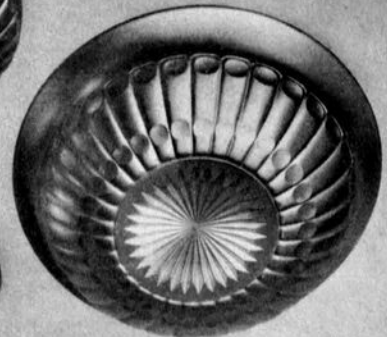
No. 48
7 inch Deep Bowl



No. 49
4 1/4 inch Fruit Saucer



No. 50
4 1/4 inch Fruit Saucer



No. 52
8 3/4 inch Deep Bowl



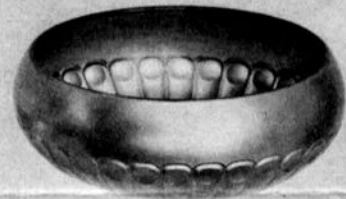
No. 53
7 1/2 inch Deep Bowl



No. 54
5 inch Fruit Saucer



No. 56
4 3/4 inch Fruit Saucer



No. 57
8 inch Deep Bowl



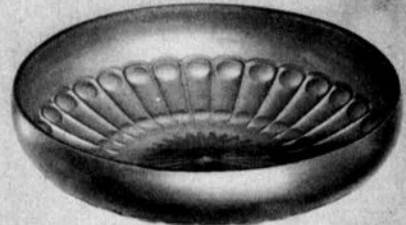
No. 58
6 3/4 inch Deep Bowl



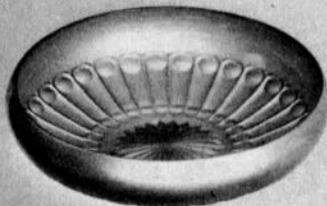
No. 59
4 3/4 inch Deep Bowl



No. 61
4 1/4 inch Deep Bowl



No. 63
9 1/4 inch Shallow Nappy



No. 64
8 inch Shallow Nappy



No. 65
5 1/2 inch Nappy



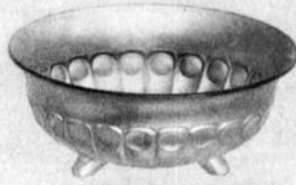
No. 66
5 inch Nappy



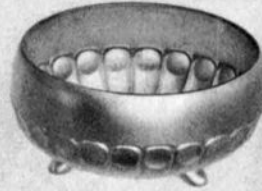
No. 67
4 3/4 inch Nappy



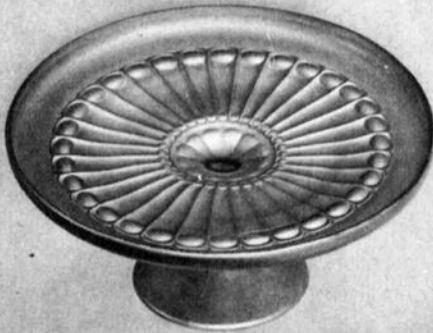
No. 71
5 3/4 inch Bowl



No. 72
6 1/4 inch Bowl



No. 73
5 1/2 inch Bowl



No. 75
9 1/4 inch Cake Salver



No. 76
7 3/4 inch Fruit Bowl



No. 77
5 1/4 inch Preserve Bowl



No. 78
6 inch Preserve Bowl



No. 79
5 1/4 inch Tall Comport



No. 81
Celery Dip
or
Almond



No. 80
Celery Dip
or
Almond



No. 83
6 1/4 inch Covered Butter



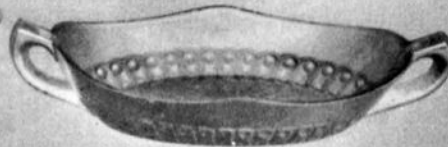
No. 84
Covered Sugar



No. 85
English Open Sugar



No. 86
Cream



No. 87
4 inch Spoon Tray



we get letters

I'd like to bring you up to date on some happenings in the world of Cambridge Carnival Glass you may not have heard of.



If you get the GLASS REVIEW, you saw the second known Near Cut Decanter pictured in the June issue. This was found by a Carnival Glass collector at an Antique Show in California last winter. I thought you might like to see a color photo of it.

Editor's Note: The color of this lovely decanter is green.

At an Auction in St. Louis, June 23rd, a Marigold Inverted Thistle water pitcher sold for \$2,000. Only a couple are known in that color. A very rare green Inverted Strawberry pitcher, with a nick having been polished out, sold for \$500. A purple Inverted Strawberry pitcher and two matching tumblers went for \$600. A green 2 oz. Buzz Saw jug sold for \$310. A green water pitcher in the same pattern went for \$190. A green (Inverted) Feather cracker jar went for \$160. A marigold Inverted Strawberry tumbler went for \$55 and a cracked one for \$7.50. Three purple Inverted Thistle tumblers brought \$240 each.

In early July we purchased a green Carnival Wheat Sheaf cracker jar base, no cover. We don't know of any other. Have you ever seen or heard of one in Carnival? This piece is shown in crystal in Bennett's color book, plate 52, row 2, no. 1.

Recently at the International Carnival Glass Convention in St. Louis we saw a marigold No. 2631 heavy pressed "Marjorie" design tumbler (not the iced tea tumbler). This tumbler is shown in both of Welker's Catalog Reprints but unfortunately the hobstar part of the design faces out rather than the more distinctive heart design. We have never heard of this design being made in Carnival except for the squat cracker jar. Have you? We were told that the one tumbler we saw was from a set of six, which made us wonder where the pitcher was.

Best Wishes, Jack Adams, WI

EDITOR'S NOTE: Thank you, Jack, for your most informative letter. Feel sure our fellow members truly appre-

ciate your sharing this information with us. I am sorry that I can not help you with answers to any of your questions. To our knowledge, you are the "expert" in our Club when it comes to Cambridge Carnival Glass. If any of our members can add any additional information, I hope they will do so! It is a shame we cannot print your photo in color, as it is truly beautiful. Thanks again for sharing!

Now that the NCC Convention is over, I am going to sit down and write a few lines. Hope everything went smoothly, and your memories are all good ones! I look forward to a report in the CRYSTAL BALL. I was sick to miss it, but as you know, this was Police Convention year for us, and I must share with you a great find of ours that weekend! Dick and I were driving into the town where the Convention was to be held (about 40 miles north of here) and we followed a "Garage Sale - Antiques" sign. As we walked up to the garage, the man politely told us that this had been the 5th day of the sale and they had everything about three-fourths packed, but we were welcome to look. I walked into the garage and nearly died when I saw a Cambridge 4" Shell with the rare candlecup insert - in the RARE Windsor Blue color! And, would you believe, it was priced at \$2.50?? I still can't believe it! It didn't entirely relieve the pain of missing the NCC Convention, but it sure helped! I think it will be a long time before I can top that one. Hopefully, we'll be in Ohio next year if all goes well.

Sincerely, Elaine Storck, MN

EDITOR'S NOTE: Words cannot express the ENVY we all feel of your good fortune! It could not have happened to a nicer couple! We look forward to seeing you in 1980.

More Convention Comments

I do want everyone to know how much their efforts on our behalf were appreciated. George Hoffman and everyone else connected with NCC produced a highly successful weekend for all attending. I must admit that when we drove by the Shenandoah I was wondering what the new location would be like, as the Country Club did offer us a nice setting for our meals and meetings.

The Show Room was a 100% improvement for both the Dealer and the members. I feel that the meetings,

continued on page 8

CAMBRIDGE BLUES

by David B. Rankin

This month our discussion of Cambridge blue colors will continue as we explore the light blue transparents.

The earliest reference to a light blue color came in July, 1928 in an article in "China, Glass and Lamps" which contained an announcement of the simultaneous introduction of two light blue formulas called Willow Blue. One of the formulas was for heavy pressed ware while the other was for light pressed and blown ware. In the article the author wrote many, many words attempting to describe Willow Blue. In essence it is a very delicate, even blue which does not gather the color effect in heavy sections of glass. Extensive references to Willow Blue appeared in "China, Glass and Lamps" through 1931 and appeared in the General Information section of the 1930 catalog.

In 1930 Cambridge was promoting the Springtime line in some unusual color names. The color names apply to this line only and appear to be a sales promotion without any real new colors. Among these colors is Mystic Blue. The current hypothesis is that Mystic Blue is really Willow Blue. The other colors were Rose du Barry (Peach-blo), Cinnamon (Amber), Jade (light Emerald) and Krystol (Crystal). This hypothesis has not been tested by careful examination of these items under blacklight (mainly due to the scarcity of Springtime items). For those of you who are not familiar with the Springtime line see pages 64-67 of the 1930-34 catalog reprint. These items were made in a satin finish with bright highlights (key design elements like the flowers were not satin finished).

After references to Willow Blue stopped in 1931 there appears to be very little activity in light blues until January, 1936 when Moonlight Blue was introduced. Moonlight Blue is the most frequently encountered of the light blues and for good reason. Caprice was also introduced in 1936 and it was a very popular line. Moonlight Blue was also the longest running light blue being produced for at least 8 years through 1943. Several colors had to be discontinued or modified during the war due to material shortages. It would appear that Moonlight Blue was one of them. After many years of absence it was sold again during the reopened period (approximately 1956-58).

There is a visible difference to the trained eye between Willow Blue and Moonlight. Several terms have been

used to describe this difference. Moonlight has more "life", more "depth", more "gathering effect". Even without more definitive terms I think you get the idea.

One final color name must be mentioned in our discussion of light blues. In 1933 a trade article in "China, Glass and Lamps" contains a reference to Eleanor Blue in connection with the Everglade line (see pages 33-25 thru 33-29b of the 1930-34 catalog reprint). Very recently we located an undated Cambridge document confirming that Eleanor Blue is a valid name and is a light blue. Although it was not dated, other information in the document is consistent with the 1933 time frame. Without confirmation of the validity of the "China, Glass and Lamps" article, until recently, no real research has been performed to discover a means of identifying Eleanor Blue.

Last month's article contained a discussion on the use of blacklight in the study of Cambridge blues, but the two opaque colors didn't really require its use. In this discussion of the light blues, its use is essential. Since all of the reactions on light blues are in the weak to medium range, it is important that these blues be viewed in the darkest possible environment.

The Decagon line was introduced in 1928 and appears to run approximately the same time range as Willow Blue. Examining a Decagon mayonnaise and plate under blacklight we found a medium, green reaction. While examining other light blue items under blacklight we found a medium, white reaction in a 3300 line sherbet. Research in "China, Glass and Lamps" shows

THE CAMBRIDGE GLASS CO. CAMBRIDGE, OHIO, U. S. A.

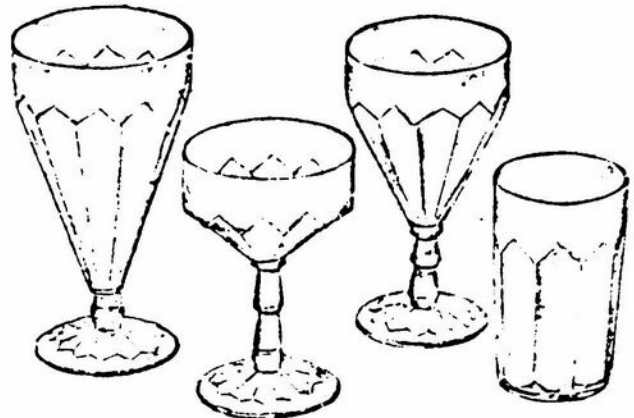


TABLE GLASSWARE

Utility in the modern manner is typified in the No. 3300 line of Cambridge glassware. The design is new and the several pieces make an attractive setting.

that the 3300 line was introduced in August, 1929 yet doesn't appear in the 1930 catalog. With such a narrow time range within the Willow Blue time range we concluded that this must be the formula for light pressed and blown ware while the Decagon items would be the heavy pressed formula.

Although the name Moonlight Blue was used during both production periods (1936-43 and 1956-58), there are at least two formulas involved. On Moonlight Blue items the most common reaction is a very, very weak, light green while another formula has a weak, blue reaction. That's right, a "Blue" reaction from a blue glass. The blue reaction was observed in a Georgian candy jar, a Gyro-Optic (3143 line) tumbler and a 200 line Caprice goblet. The Georgian candy jar appears to be unique to the reopened period while the other items were produced in the early 1940's. At this point we are unable to further clarify the period or relationship of these two Moonlight formulas.

There is one other reaction under blacklight which shows us a fifth light blue formula. Unfortunately it is in a 9 oz. Georgian tumbler. The 9 oz. Georgian was produced from the mid 1920's through the end in 1958. This is not much to go on until we can observe the same reaction in other pieces. When I first observed this item under blacklight I thought there was no reaction at all. Upon careful examination I saw a weak, dark green reaction. This item appears different to the naked eye also. A little darker than either Willow or Moonlight Blues it looks almost like a dirty blue.

From this discussion it is obvious that more research and study is needed to clarify the many facets of the light blues.

The following summarizes the characteristics of the light blues:

- 1) Willow Blue (1928-1931) - delicate even blue
Under blacklight:
 - a) Heavy pressed formula - medium, green reaction
 - b) Light pressed and blown formula - medium, white reaction
- 2) Mystic Blue (1930) - same as Willow Blue
- 3) Moonlight Blue (1936-1943 & 1956-1958) - a little darker than Willow Blue, slight gathering effect
Under blacklight:
 - a) Formula 1 - very weak, light green reaction
 - b) Formula 2 - weak, blue reaction
- 4) Eleanor Blue (1933) - characteristics unknown
- 5) Unknown Blue - dirty blue darker than Willow or Moonlight
Under blacklight: weak, dark green reaction

BOOKS FOR SALE

All of the available reference books relating to Cambridge glass can be ordered directly from the Club.

Address your orders for any of the following to:

BOOK
National Cambridge Collectors, Inc.
P.O. Box 416
Cambridge, Ohio 43725

Please add \$1.00 (P & I) on each book order.
(Not required for Price List only orders)

Ohio residents please add 4½% State Sales Tax.

★
by National Cambridge Collectors, Inc.

1949-1953 CAMBRIDGE GLASS CO. CATALOG REPRINT
(300 page reprint of original catalog)
Hardbound with Price Guide \$14.95

1930-1934 CAMBRIDGE GLASS CO. CATALOG REPRINT
(250 page reprint of original catalog)
Hardbound with Price Guide \$14.95

1978 PRICE GUIDE
for 1930-1934 catalog reprint \$2.00

★
by Mary, Lyle, and Lynn Welker

CAMBRIDGE GLASS CO.
(120 pages of reprint from 8 old catalogs) \$6.95

CAMBRIDGE GLASS CO. BOOK II
(119 pages of reprint from old catalogs) \$6.95

CAMBRIDGE, OHIO GLASS IN COLOR II
(15 color plates w/descriptions and notes) \$5.95

★
by Harold and Judy Bennett

THE CAMBRIDGE GLASS BOOK
(96 pages with 59 color plates) Paperback \$7.95

1903 CAMBRIDGE GLASS CO. CATALOG REPRINT
(106 page reprint of an original catalog) \$7.50

★
by Charles and Mary Alice Upton

1979 PRICE GUIDE to the CAMBRIDGE GLASS BOOK
(Prices for each item in Bennett book) \$2.00

★ ★

Show, Banquet, etc., being accommodated under one roof - plus the members being able to have room accommodations at the same facility was highly beneficial to all.

I did overhear someone mention that they felt it better to have two colors only to display in the Display Room, and I would like to add my approval to that. I most especially enjoyed the smallness of the Display Room since it brought one closer to the items and detail was much easier to view and to study.

Dave's (Rankin) talk on the Cambridge Blues and Lynn (Welker) and Frank's (Wollenhaupt) presenting the slides on both Stems and Candlesticks certainly offered a great study opportunity to the members. I realize that these persons had to sacrifice time from doing business, but it was a great addition to the activities.

Once again, I think I speak for all when I comment on the usual air of warmth and friendliness that I have always encountered at each Convention. The quality of sharing information has always impressed me. Isn't it great that the officers and Board members seem to be able to improve the Convention each year?

Marcia Ellis, NY

The Convention was a refreshing and delightful experience. It's nice to know that in this world of seeming desert there is an oasis of dedication, sincerity and purity of purpose. May we always remain in this spirit.

Sincerely, Adelaide Schwark, MI

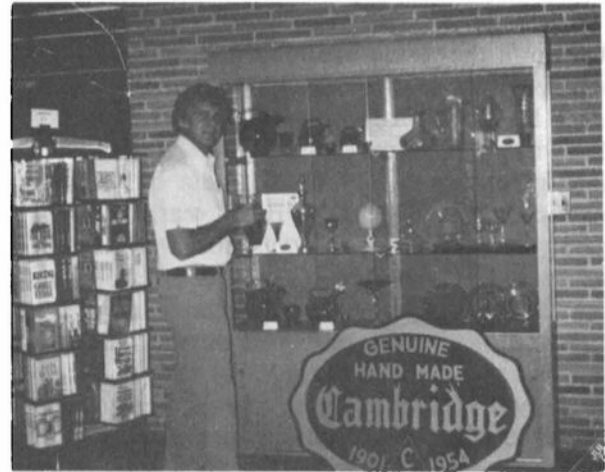
Five of the Cambridge Club members (Florida Everglades Study Group #3) attended your Convention from the Miami, Florida area. We would like to say our trip was wonderful. We were so pleased to attend this year. It is a must for all of us for June 1980. Thank you for a beautiful Convention!

Yours Truly, Evelyn & John Knowles, FL

EDITOR'S NOTE: Thanks to all of you who take the time to write to us. We do appreciate hearing from you.

Cambridge Glass Displayed

The Lakewood, Ohio, Public Library was graced with a lovely display of Cambridge Glass during the entire month of June. Joe Andrejcek, a member of the "Cambridge Arms" Cleveland Area Study Group #4, presented this Display at the request of the local librarian.



Joe Andrejcek and his Cambridge Glass Display

Included in the display case shown here were the following items from Joe's private collection. Top Shelf: #3400/38, 80 oz. ebony Jug and #498 10 oz. tumbler; #3400/92, 32 oz. amethyst Decanter and 2½ oz. tumbler; #3400/119, 12 oz. carmen Cordial and 1 oz. tumbler; #2631 "Marjorie" Water Bottle; #2651 "Feather" 8" Pitcher; #3500/41, 10" Rosepoint (Gadroon) covered Urn; and a #274, 10" Rosepoint Vase.

The middle row contained: #1321, 28 oz. amber ftd. Decanter and #7966, 2 oz. Sherry; #1321, 28 oz. amber Farberware Decanter and #5468 Cocktail; amber Bridge Hound; #1236, 7½" crown tuscan Ring Stem Ivy Ball; and a complete setting of Rosepoint, including the 10" plate, Gadroon cups and saucers, and stemmed glassware in several sizes.

The bottom shelf included: #3400/38, 80 oz. royal blue Jug and #1400/46, 10 oz. table tumbler; #3450, 28 oz. forest green Nautilus Decanter and #1402/40, 2½ oz. tumbler; #3011, 7" carmen, Nude Stem Cupped Comport; the 1973 and 1974 NCC Collector Plates; the 1977 NCC Collector Lady Leg Bookend; and an 8" green bread and butter Plate with Willow etching.

According to the Librarian, the Display was well received and many NCC Membership applications were distributed. Joe has been invited to present another Display during the month of December and it will consist of carmen and forest green pieces of Cambridge Glass. We would encourage anyone living in the area of Lakewood, Ohio, to stop in during the month of December and see this Display at the Lakewood Public Library.

Sonata the oval line

These items are also made . . .

- No. 1957/110 — OVAL CUP AND SAUCER
- No. 1957/113 — 10" PLATE WITH SEAT FOR No. 110 CUP
- No. 1957/117 — OVAL CELERY AND RELISH
- No. 1957/121 — 1-LITE CANDLESTICK



No. 1957/124 — BONBON



No. 1957/101
SMALL OVAL BOWL



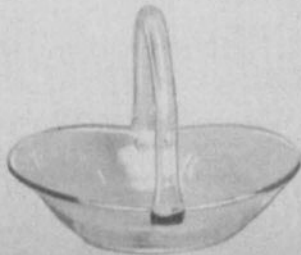
No. 1957/129 — HDL. SAUCE BOAT



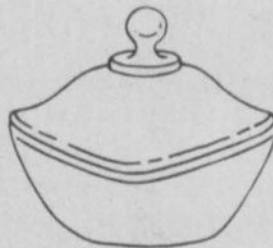
No. 1957/100
10" OVAL BOWL



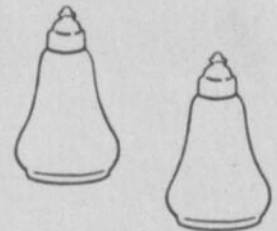
No. 1957/131 — HDL. BASKET



No. 1957/132 — HDL. BASKET



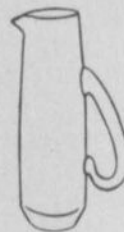
No. 1957/130
SWEET DISH & COVER



No. 1957/112 — SALT & PEPPER



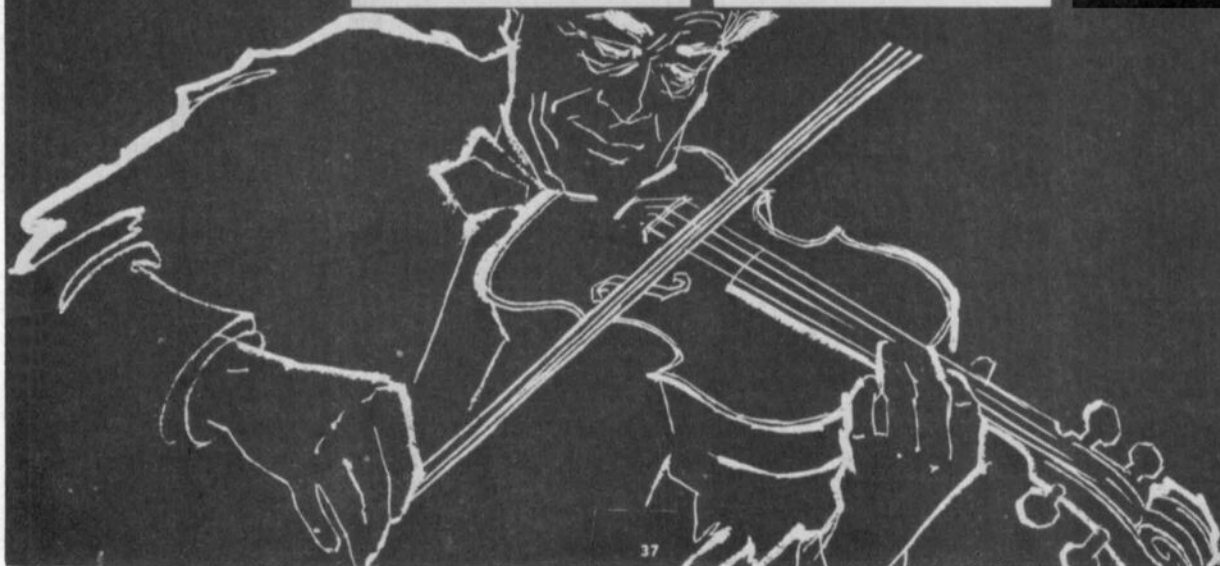
No. 1957/135 — OIL



No. 1957 — MARTINI SWIRLER



No. 1957 — GOBLET





No. 1957 GOBLET — CHARM
ROCK CRYSTAL ENGRAVED

No. 1957 GOBLET — SPRING
ROCK CRYSTAL ENGRAVED



Georgian Line



No. 319C
CANDY BOX AND COVER



No. 319 - 9 OZ. TUMBLER



No. 319 - 12 OZ. TUMBLER



No. 317 - 5 OZ. TUMBLER



No. 319/8/3 - BASKET, CRIMPED



No. 319/8/2 - BASKET

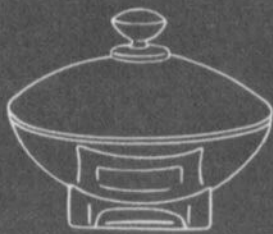


No. 3175 - SHERBET

Gifts



No. 3011 — COMFORT



No. 3797/165
CANDY BOX AND COVER



No. 3500/101
5 3/4" TALL COMFORT



No. 3400/1180
5 1/4" 2-HANDLE BOWL



No. P-212 — CELERY AND RELISH



No. 3011 — 1 OZ. CORDIAL



No. 1956/3/4 — CENTER PIECE
BLOCK AND 3 VASES



No. 3400/1181
6" 2-HANDLE PLATE



THE CAMBRIDGE GLASS COMPANY, CAMBRIDGE, OHIO, U. S. A.

beautiful, practical
Krome-Kraft 2-51
table accessories



creamer & sugar set

jam jar



Snaps On Snaps Off
(patented feature)

You'll love these unique, ever-so-smart Krome-Kraft table accessories with their fine hand-made colored glass inserts and detachable non-tarnishing chrome mountings! Easy to clean—always bright and attractive! For you to see at good stores everywhere.



FARBER BROTHERS
15 Crosby St., New York City
"Distinguished For Quality"



to truly 2-47
reflect your
hospitality

Sparkling hand-made glass in distinctive colors, and finest non-tarnishing chrome in all its lustrous beauty. Patented chrome mountings snap off for easy cleaning and replacement. At gift, jewelry and dep't stores.



Snaps off Snaps on (pat'd)

FARBER BROTHERS
17 Crosby St., New York, N. Y.

OHIO STATE FAIR REPORT

by Susan T. Rankin

Each year when it comes time to write this report, I am faced with the same problem. How do you say "Cambridge Glass Shines at State Fair" in different terms?

Once more Cambridge glass has done well at the Ohio State Fair in the Antiques division of the Family Arts and Crafts Department. 1979 found 42 pieces of Cambridge glass entered in 14 categories. There were 32 ribbons distributed as follows: 9 first place, 4 second place, 10 third place, 4 fourth place and 5 fifth place.

First place ribbons were awarded to an Amber turkey, frosted light Emerald rose lady, a Carmen Nautilus jug and four tumblers, an Amethyst boudoir set - tray, covered jug and tumbler, a Royal Blue Gadroon Rams Head bowl, a large Crystal Heron, a Topaz Keg set, a light Emerald Giesha, and a Rubina bowl.

Entry fees were raised this year by the Fair Board and this seems to have contributed to a drop off in the total number of entries, but Cambridge glass was well represented and certainly did shine at the Fair.

— Classified —

WANTED: CAMBRIDGE CAPRICE. The usual and unusual. Pieces in all colors and Alpine. E. A. Vimmer, P.O. Box 235, Westchester, IL 60153.

FOR SALE: CAMBRIDGE JAPONICA, royal blue, 12" Vase. \$800. Money order only. Will send picture - five day returnable. E. Hollandsworth, 6001 Chesapeake Drive, Lansing, MI 48910.

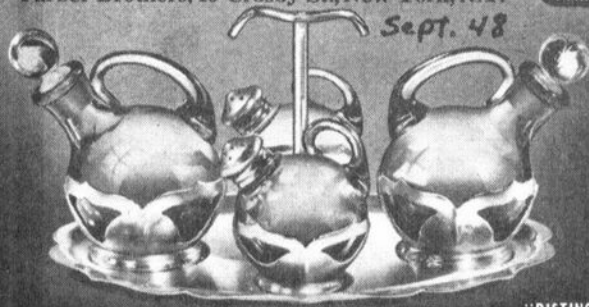
People can be divided into three groups - those who make things happen, those who watch things happen, and those who wonder what happened.

"Mutual confidence is the pillar of friendship."
from a Fortune Cookie

Right for Bright tables

A KROME-KRAFT
CONDIMENT SET

Sparkling holders of quality chrome, with gay jugs of fine colored glass. To spice up your table—and as a most practical gift. At Jewelry, Gift and Department Stores. Write for folder. Farber Brothers, 15 Crosby St., New York, N.Y.



Sept. 48



Snaps off Snaps on (pat'd)

Patented holder protects glass — makes cleaning easy.

Cruets 3 3/4 in. Salt and peppers 2 1/2 in. high. Color: Amber or Amethyst.

"DISTINGUISHED FOR QUALITY"

ALL ANTIQUE AUCTION

G. B. B. A. HALL

350 Hudson Avenue
Newark, Ohio

WEDNESDAY, SEPTEMBER 5, 1979 - 10 AM

The following collection of fine Antique items will be sold at auction. This is a fine variety and will be loaded with desirable items. Plenty of parking.

CAMBRIDGE GLASSWARE to include Tally-Ho punch set (bowl w/underplate and cups w/green handles); creamers & sugars; Farberware; crown tuscan; carmen top Nude Stem wines; 80 oz. ball jugs; Rosepoint; Chantilly; Elaine; milk glass; blue and crystal caprice; and more.

HEISEY GLASSWARE to include Greek Key punch bowl; sleeping fox ash tray; Victorian girl bell; fish; pheasant; fighting rooster; other animals; moon gleem duck flower frog; pr. New Era candlesticks; deep plate club drinking scene mug; Orchid etch; rose etch; miniatures (toothpicks, salts, etc.); custard; Moongleem; pr. cobalt Warwick candlesticks; vaseline etc.

ART & VICTORIAN GLASSWARE milk to cranberry glass ruffled edge brides basket; acid cut back La Verre Francais vase (signed); Verlys pcs; Ericson decanter; Duncan Miller opalescent; 4 mini milk glass Victorian kerosene lamps; 3 kero lamp fonts; old Imperial; Imperial slag glass animals; pattern glass in amber; wildflower cream & sugar; covered compote; goblets; carnival glass pcs; Fenton opalescent pcs; 2 paper weights.

ACCESSORY AND MISCELLANEOUS carmel slag 6 pane Victorian table lamp; partial set of old Haviland Limoges; blue transfer Staffordshire plates; H.P. plates; Fiestaware; pottery . . . Roseville, Weller, Nilok, Cowan; pictures & frames; unusual sewer tile box; primitives & wooden kitchen items; graniteware; toys to include animals & pull toys; cast iron & trucks; advertising items; coke trays; tinware; iron still banks; coins; bottles; linen & fancy work; clocks (mantle type); and much more.

FURNITURE walnut one drawer stand; ornate oak wash stand; set 4 nice spindle back chairs; sm. oak desk w/ornate legs; sm. dovetailed blanket chest; oak bookcase; fern stand; oak 2 drawer file cabinet; 2 & 4 drawer spool cabinets; ornate golden oak music cabinet; folding oak book shelf; walnut sewing cabinet; ball & claw piano stool; maple bachelor's chest (with mirror); Victorian youth bed; Victorian 3 drawer chest; walnut Victorian corner chair; open one drawer wash stand w/towel bar; nice Wehrle stove w/blue enamel; oak counter top cash drawer; walnut & poplar 2 drawer wash stand; gesso decorated table w/mirror to match; odd chairs & stands and more

Terms: Cash or check w/positive I.D. Lunch available

OWNER
George Hoffman

AUCTIONEER
Craig Connelly, Newark, Ohio
Clum, Clum, Hughes
614-587-2874

DEALERS



DIRECTORY

<p>ANTIQUÉ ALLEY 24815 Broadway Bedford, Ohio 44146 216-232-7739 Marie Spagnola CAMBRIDGE GLASS ROYAL DOULTON</p>	<p>BENICIA ANTIQUE SHOP 305 First Street Benicia, California 94510 OPEN 11 AM - 5 PM Closed Monday Z. E. LOPES 707-745-0978</p>	<p>CHARLES MIKULIK Box 416 Elizabeth, N.J. 07207 Phone 201-372-1101 BY APPOINTMENT ONLY!</p>
<p>EVELYN M. ALLEN 135 Cynthia Street Heath, Ohio 43055 Mail Order & Shows 614-522-1635 SPECIALIZING IN CAMBRIDGE GLASS!</p>	<p>VISIT HISTORIC BENICIA and its 28 shops Off Interstate #80 North of San Francisco</p>	<p>Always buying CAMBRIDGE BLUE CAPRICE in blown or unusual pieces only. CARRY MOST TYPES OF ANTIQUES</p>
<p>BLACK ROOSTER ANTIQUES 1018 Clark Street Cambridge, Ohio 43725 614-432-3202 M. Sipe CAMBRIDGE GLASS - GENERAL LINE</p>	<p>CHURCH STREET ANTIQUES 6 Church Street Boston, Massachusetts 02116 George or Frank 617-426-1048 CAMBRIDGE, HEISEY, GENERAL LINE</p>	<p>COYLE & SCHUSTER ANTIQUES Box 982 - Ph. 614-349-7362 Newark, Ohio 43055 Shows & Mail Order BUY & SELL - CAMBRIDGE - HEISEY</p>
<p>D & D ANTIQUES 184 East Kossuth Street (GERMAN VILLAGE) Columbus, Ohio 43206 DICK SLIFKO 614-443-6020</p>	<p>D'MARIE'S ANTIQUES US Rt. 1 - just South of Rt. 606 Thornburg, Virginia 22565 703-582-6220 Jim Rankin OPEN EVERY DAY 10 AM to 6 PM</p>	<p>FINDER'S KEEPER'S ANTIQUES P.O. Box 303 Dayton, O. 45401 513-254-2937 P.O. Box 16023 Columbus, O. 43216 614-885-2726 SPECIALIZING IN CAMBRIDGE GLASS!</p>
<p>THE GLASS CUPBOARD 39 Shire Oaks Drive Pittsford, New York 14534 Marcia Ellis 716-586-7596 CAMBRIDGE ONLY SASE FOR LIST</p>	<p>GREEN ACRES FARM 2678 Hazelton Etna Rd., SW Pataskala, Ohio 43062 (SR 310 North) Sat. & Sun. 1-6 PM W. Bryan CAMBRIDGE & HEISEY 614-927-1882</p>	<p>'OUR GLASS ANTIQUES Box 27, Wills Point, Texas 75169 20th CENTURY COLLECTIBLES featuring CAMBRIDGE GLASS! Shows - No Lists - SASE Please PAUL & GINNY HENDERSON 214-563-6971</p>
<p>HOBBY HOUSE ANTIQUES Rt. #1, Cambridge, Ohio 43725 614-432-6971 Lena Barnes Take Rt. #209 West from Cambridge to Rt. #658 - North 1-1/2 miles</p>	<p>GEORGE HOFFMAN ANTIQUES 129 South 4th Street Newark, Ohio 43055 614-345-8550</p>	<p>1886 HOUSE East Schodack, N.Y. 12063 MAIL and SHOWS Laurie Cruise 518-477-5895 CAMBRIDGE - NORITAKE - AZALEA - D.G.</p>
<p>LASHER ASSOCIATES 119 Water St. Gaithersburg, Md. 20760 Faith Lasher 301-977-8296 SPECIALIZING IN GLASSWARE</p>	<p>M & M ANTIQUES & COLLECTIBLES 310 N. Main - Box 417 Canton, Kansas 67428 The Martin's 316-628-4705 SPECIALIZING IN CAMBRIDGE GLASS!</p>	<p>THE MOUSE HOUSE ANTIQUES Route 22 East Cambridge, Ohio 43725 Shirlee Bistor 614-432-3132 SPECIALIZING IN GLASSWARE!</p>
<p>OLDE TOWNE ANTIQUES 307 W. St. Louis Street Lebanon, Illinois 62254 Edith Zimmerman 618-537-4567 GENERAL LINE ANTIQUES</p>	<p>YOU CAN ADVERTISE YOUR ANTIQUE SHOP HERE! 1 inch - \$6 for six months</p>	<p>ROBERT PAGE 417 S. Edgeworth St. Greensboro, N.C. 27401 SPECIALIZING IN DISCONTINUED CRYSTAL! 919-273-8085 after 6 PM</p>
<p>BILL & SHARON PHILLIPS 21730 Friday Euclid, Ohio 44123 Ph. 216-261-4665 Shows Only BUYING GLASS, ANTIQUES, ETC.</p>		<p>SWISS HILLS COLLECTIBLES Mary & Wilbur Henderson 303 Guilford Avenue Woodsfield, Ohio 43793 Mail & Shows 614-472-1133 SPECIALIZING IN CAMBRIDGE GLASS!</p>



T Shirts *by Brandt*

AN IDEAL GIFT FOR THE CAMBRIDGE COLLECTOR

A YELLOW T-SHIRT WITH A BLACK CAMBRIDGE SEAL!

FIRST QUALITY — **SPECIAL** \$7.50 each
(includes postage and handling)

The T-Shirt you saw at the Cambridge Convention
is now available in men's and
women's sizes!

Phone: 305-764-2063

ORDER NOW: Send your check or money order (\$7.50 for each shirt) to:

T-Shirts by Brandt, 1305 N. W. 1st Avenue, Fort Lauderdale, Florida 33311

Please specify size when ordering: WOMEN: small, medium, large MEN: medium, large, x-large



**OBTAINED A
NEW MEMBER?**

Do you need Membership Applications?

Do you need "Complimentary" copies of the CRYSTAL BALL?

If so, let us hear from you and we will send them off to you. We want to do all we can to help YOU become the **winner** who will receive his/her Registration fully paid to the 1980 NCC Convention.

Naturally NCC is going to be the **BIG WINNER** in this contest — and we need YOUR HELP!

National Cambridge Collectors, Inc.
P.O. Box #416
Cambridge, Ohio 43725

FIRST-CLASS MAIL
U.S. POSTAGE
PAID
So. Vienna, Ohio
45369
Permit No. 15

FIRST CLASS MAIL