

Cambridge



Crystal Ball

ISSUE NO. 99

JULY 1981

Published monthly by the NATIONAL CAMBRIDGE COLLECTORS, Inc.
To encourage and to report the discovery of the elegant and boundless product
of the Cambridge Glass Company, Cambridge, Ohio

Thoughts from the President

It's possible that by the time most of you are reading this issue of the *Crystal Ball*, the Convention will be over, or will be in progress. Phyllis is working hard to get this issue out prior to Convention. However, since the articles must be written well in advance, you people who were unable to attend will have to wait until the August issue to read about the gala event.

As of right now it looks like a full house for Andy Anderson's Saturday morning Breakfast engagement, and also for Dr. and Mrs. Adams' Saturday evening Banquet engagement. This thing is getting bigger every year and sometime in the near future we are going to have to find a place that will accommodate more people. I think we would all rather have extra accommodations than to have to turn people down for the Banquet.

The August issue of the *Crystal Ball* will be edited by our new Editor, Peg Gotschall, and will be printed at the Jeffersonian (daily newspaper) in Cambridge, Ohio. Words cannot describe the elation I felt when Peg accepted this most important job. From the very beginning, when I asked her to consider the possibility, I was impressed with the interest she showed. She immediately began checking into the possibility of the printing being done in Cambridge, and familiarizing herself with all the details connected with the publication. Having worked all of this out, she accepted the challenge. I know I can speak for the whole membership. We all owe you a lot of thanks Peg for accepting this responsibility. We know we have another capable and conscientious Editor.

Again, we want to thank you Phyllis, for the countless hours you have spent during the last six years in bringing us the *Crystal Ball*, and for the help you have given Peg in making this transition a very smooth one.

We would also like to thank Mr. Moorehead of the Jeffersonian for accepting, once again, the job of printing the *Crystal Ball*. It will be much more convenient for Peg to work with a printer and typesetter, right there in Cambridge.

Our printer for the last four and a half years has been Graphic Printing, a Division of McGregor & Werner, Inc., located in New Carlisle, Ohio. Their excellent working relationship with Phyllis, and the quality of their work has been most gratifying. We do want to thank them, especially Marilyn and Phyllis, for all the help they have given to Phyllis! She says she "couldn't have done it without them". A special thanks goes also to Joyce Bender of TIPS, Inc., Springfield, Ohio, for doing our typesetting the last two years. The consideration that these fine folks have given to both, Phyllis and NCC, has been, and always will be, most sincerely appreciated.

As you read this, work is in progress on the renovation of the building on our NCC property, as a temporary place for us to display Cambridge glass. Our tenant vacated the building on June 6th and Museum Chairman Bill Harbaugh has started work on the necessary remodeling.

For those of you that I will not be seeing during the Convention, I would like to say "thank you" for your help and understanding, as I complete what has been a very fast-paced and rewarding year for me as your President.

Willard

MEMBERSHIP RENEWAL NOTICE

If the date on your
address label is - -

7 - 81

This is your **LAST ISSUE** of the **CRYSTAL BALL**.

Please renew NOW!

CAMBRIDGE CRYSTAL BALL

Official publication of National Cambridge Collectors, Inc., a non-profit corporation with tax exempt status. Published once a month for the benefit of its members.

Membership is available for individual members at \$10 per year and additional members (12 years of age and residing in the same household) at \$3 each. All members have voting rights, but only one *Crystal Ball* will be mailed per household.

Back issues of the *Crystal Ball* are available (beginning with Issue #1, May 1973) for members only. Cost: 60¢ each or 12 issues for \$7.

1980-81 OFFICERS & COMMITTEE CHAIRPERSONS

PRESIDENT	Willard Kolb
VICE-PRESIDENT	Josephine Barstow
SECRETARY	Janice Hughes
TREASURER	William Smith
SERGEANT-AT-ARMS	Don Armbrrecht
ASSISTANT SECRETARY	Susan Rankin
BOOK SALES	Meg Turner
BUDGET & FINANCE	David Rankin
BY-LAWS	David Rankin
CONVENTION	Josephine Barstow
MEMBERSHIP	Josephine Barstow
MEMBERSHIP ASSISTANT	Brenda Harbaugh
MUSEUM	Billy Harbaugh
MUSEUM CURATOR	Charles Upton
PROGRAM & ENTERTAINMENT	Frank Wollenhaupt
PROJECT	Willard Kolb
PUBLIC RELATIONS	William Smith
PUBLICITY	Joseph Andrejcak
STUDY GROUP ADVISORY	Jack Rettig
1981 ALL-CAMBRIDGE AUCTION	Lynn Welker
1981 ANTIQUE SHOW	Charles Upton
CRYSTAL BALL EDITOR	Phyllis Smith

CLASSIFIED ADVERTISING RATES

5¢ per word \$1.00 minimum

We cannot mix type size in classified advertisements. Abbreviations and initials will count as words. Payment in full MUST accompany all ads.

DISPLAY ADVERTISING RATES

	Members	Non-Members
1/8 page	\$ 4.00	\$ 6.00
1/4 page	7.00	10.00
1/2 page	12.00	18.00
3/4 page	17.00	25.00
Full page	22.00	33.00

DEALERS DIRECTORY

1" ad (5 line maximum) \$6.00 for 6 months

Cambridge *Crystal Ball* assumes no responsibility for items advertised and will not be responsible for error in price, description or other information.

Advertising copy must be in our hands by the 10th of each month to assure publication in our next issue. Advertisements containing reproductions will not knowingly be accepted unless clearly stated.

PLEASE ADDRESS ALL CORRESPONDENCE TO

Cambridge Crystal Ball
National Cambridge Collectors, Inc.
P.O. Box 416
Cambridge, Ohio 43725

PLEASE NOTIFY US IMMEDIATELY OF ANY CHANGE IN YOUR ADDRESS!

Please enclose a self-addressed, stamped envelope when requesting information!!

STUDY Club News

STUDY GROUP #5 - SOUTHERN CALIFORNIA "CALIFORNIA CAMBRIDGE COLLECTORS"

The California Cambridge Collectors held their meeting May 15th, in the home of Joan McDowell. There were fourteen members in attendance.

A Silent Auction was held, and there were many items to bid on, and nearly everyone had a successful bid. After the Auction we voted to donate \$300 to the National Cambridge Museum Fund.

Some very choice items were displayed for our "Show & Tell". A beautiful amber Cut Wild Rose punch bowl with crystal stand and amber cups was displayed by Ron Rockafellow. Ruth Eilenfield brought a moonlight blue bridge tray. Pat Daly and Ann Harrigan shared several items, including: a crystal nude stem w/carmen Sweetmeat w/lid; an amethyst Gadroon basket; a 5 1/2" amber covered Rabbit; a crown tuscan Shell vase w/silver Seahorse decoration; amber candlesticks w/#732 etching; #647 windsor blue double candlesticks; and a milk glass Swan with Charleton painting. Betty Wanser brought a pair of crystal Tombstone bookends; a moonstone Swan; and a #2 ebony Swan. Bill Losch had Caprice moonlight blue wine glasses; #646 candlesticks, pink w/Appleblossom etching; a rectangular emerald green box w/Farber lid; and a lovely Jade covered candy dish.

The Raffle was won by Ruth Eilenfield. Her prize was a marked mandarin gold creamer and sugar.

submitted by Joan McDowell, Secretary

STUDY GROUP #7 - EASTERN OHIO "THE CAMBRIDGE BUFFS"

The Cambridge Buffs Study Group met May 13th in the home of Jim and Shirley Douglas, with eleven members present.

Our Program for the evening included a color slide presentation of different Cambridge colors, experimental pieces, and unusual pieces that were made for a short period, dating back to 1910.

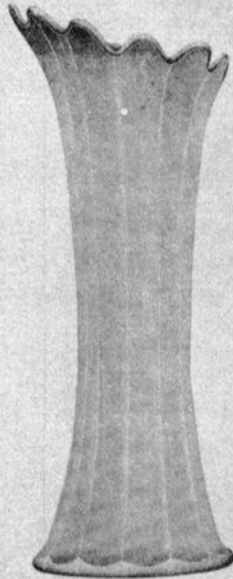
Several different pieces were identified during our "Show & Tell" period. They included the following: a Near Cut Fernland cruet; a Cat bottle; a Pomona green goblet w/Hunt Scene etching; a Cambridge Square cocktail edged with silver; a Blue Cloud sherbet; a Near Cut Radium wine; a Near Cut Feather wine; a Regency cordial and cocktail in amethyst; a Talisman rose sherbet; #3121 stem line w/Rosepoint etching; #3779 stem low goblets w/Daffodil etching; Caprice #300 9 oz. goblet; and several pieces that were identified as not Cambridge.

Our next meeting will be held June 17th in the home of Doris and Roy Isaacs.

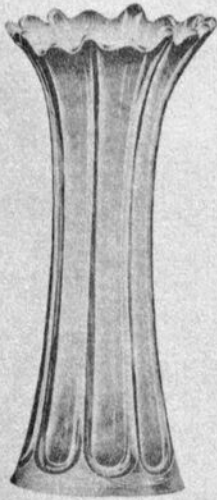
submitted by Deanne Gray

VASES AND FANCY FLOWER HOLDERS.

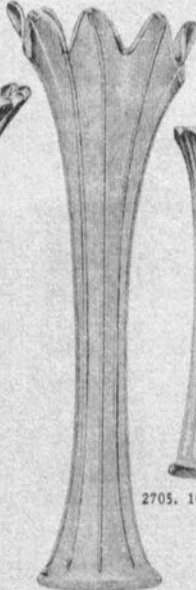
TRADE
"Mearcut"
MARK



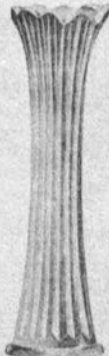
2630. 16 to 18 in.
Large Colonial Vase.



2586. 16 to 18 in.
Large Vase.



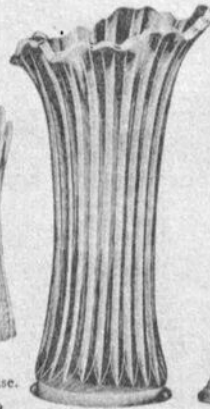
2585. 12 to 16 in.
Tall Vase.



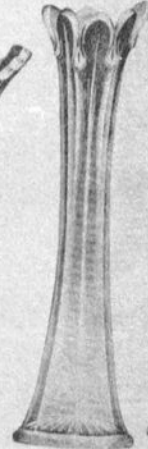
2705. 10 in. Vase.



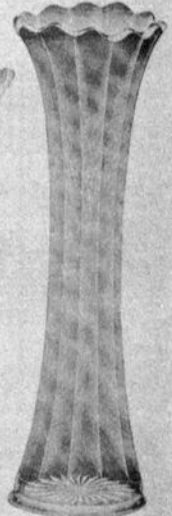
2707
6 in. Vase.



2704. 12 to 16 in. Vase.



2583. 12 in. Vase.



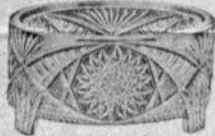
2706
12 to 16 in. Vase.



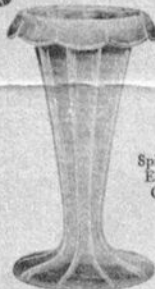
2671. 12 in.
Heavy Imitation Cut Glass.



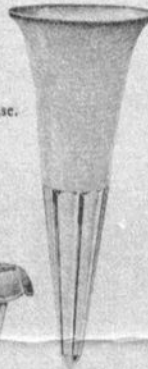
2740. Fern Dish.



2689. 6 in.
Fern Dish and Glass Liner.



2750
Turned Edge Bouquet.



2582
Spike Lawn Vase.
Either Plain or
Crimped Top.



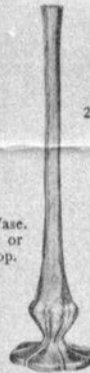
2585. Sweet Pea Vase.
Squat Shape.



2642
6 1/2 in. Footed Vase.



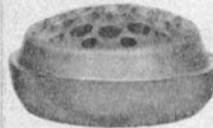
2750. Trumpet Vase.



2362
8 to 9 in.
Bud Vase.



2643. 6 1/2 in. Footed Vase.



2899. Flower Block,
all Sizes.



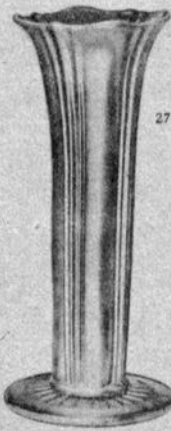
2863 1/2
3 Piece Flower Center.



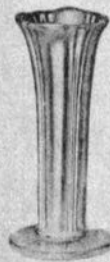
2840. 9 in. Tall Vase.
Crimp Top.



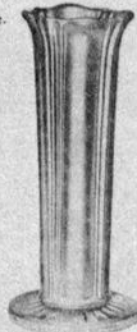
2840. 7 in. Tall Vase.
Crimp Top.



2839. 13 in.
Tall Vase.



2839. 7 in.
Tall Vase.



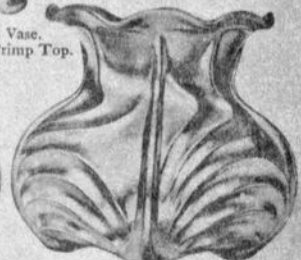
2839. 9 in.
Tall Vase.



2841. 5 in.
Low Rose Bowl.



2841. 6 in.
Low Rose Bowl.



2841. 9 in.
Low Rose Bowl.



No. 2360. 12 in.
Cut 4078



No. 2358
8, 10 and 12 inch
Cut 4078



No. 2361. 10 in.
Cut 4078



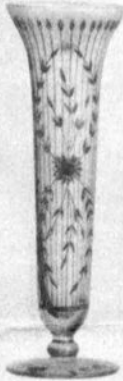
No. 2357
6 and 8 inch
Cut 4078



No. 2360. 10 in.
Cut 4078



No. 2366
8, 10 and 12 inch
Cut 4078



No. 6004
8, 10 and 12 inch
Cut 4075



No. 2366
8, 10 and 12 inch
Cut 4075



No. 2354. 10 in.
Cut 4075



No. 2355. 10 1/2 in.
Cut 4075



No. 2356. 10 in.
Cut 4075



No. 2800/209. 9 in.
Non Splash Auto
Cut 2187



Bud Vase
8, 10 and 12 in.
Cut 4078



10 in. Bud Vase
Cut 884



No. 2356. 10 in.
Cut 2057



No. 2355. 10 in.
Cut 884



No. 2354. 10 in.
Cut 887



No. 2361. 10 in.
Cut 4098



No. 2364. 6 in.
Cut 4098



No. 6001. 9 in.
Cut 2057



No. 6000. 9 in.
Cut 2



No. 6006. 6 1/2 in.
Cut 3097



No. 1633. 8 in.
Cut 844



3011 FIGURE STEM LINE

by Janice Hughes
& Lynn Welker

IVY BALL (3011/25)

The nude is 4-1/2"

(middle size made)

The top width of Ivy Ball is 4"

The length of Ivy Ball is 4"

The overall height is 9-1/2" -

9-3/4" (The difference being
some have flat base where
connected to nude and some
are ground down on top)



BUD VASE (EGG) (3011/26)

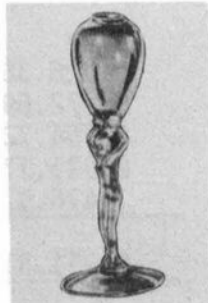
The nude is 6"

(largest size made)

The widest part is 2-1/2"

The length of vase is 3-3/4"

The overall height is 10-1/2"



MINT DISH (3011/29)

The nude is 4-1/2"

(middle size made)

The shell is 3-3/4" by 4"

The overall height is 7"



None of these are pictured in the 1930-34 Catalog Reprint as they were added to the line in the early 1940's.

The Ivy Ball is known in carmen, royal blue, crystal, forest green, amethyst, amber, gold krystal and the late colors moonlight blue, pink, pistachio, mandarin gold, emerald green and smoke. One Ivy Ball is known with a caprice optic top. The Ivy Ball was made with a frosted stem.

The Bud Vase is known in carmen, royal blue, crystal, forest green, amethyst, amber and gold krystal.

The Mint Dish is known in carmen, royal blue, crystal, forest green, amethyst, amber and gold krystal.

The Ivy Ball was made into the 1950's. The Bud Vase and Mint Dish were discontinued sometime in the 1940's. Both are harder to find than the Ivy Ball, with the Mint Dish most desirable. Both are considered rare.

No decorations are known on any of the three.

None have been reproduced.

(Next month - Comports)

NEW CRYSTAL BALL EDITOR NAMED

NCC President Willard Kolb has announced the appointment of Margaret J. "Peg" Gotschall, as Editor for the *Cambridge Crystal Ball*. Her duties will begin with the August 1981 issue. She will replace Phyllis Smith, who has served as Editor for the past six years.



Crystal Ball Editor - Peg Gotschall

Volunteer work is no stranger to Peg and it is the opinion of many that she is eminently qualified to fill this important position. She is a graduate of Muskingum College, New Concord, Ohio, where she received her B.S. in Music Education. She has taught English in public school, as well as Music. She has filled many chairmanships in such volunteer organizations as: the American Red Cross; the Board of the Campfire Council; the Cambridge Concert Association; the Craft Classes of the Salt Fork Arts and Crafts Festival; Wing 2; and the Ohio Hospital Association Show and Share. She has also held employment as a private piano instructor; Church Choir Director; and Executive Director of the Campfire Council 77-70.

Her hobbies include collecting antiques and collectibles, music, decorative painting, and needlework. She presently operates a small antique shop in her home.

Born in Dover, Ohio, 1928, Margaret J. Pfeiffer became the bride of H. Dale Gotschall in 1951. She and Dale celebrated their 30th Wedding Anniversary on June 10th. They are the parents of four sons, Douglas 27, Jeffrey 26, Mark 20, and Brad 17. The Gotschalls reside in Cambridge, Ohio, where Dale is employed as Administrator of the Guernsey Memorial Hospital. The Gotschall family are active members of the Westminster United Presbyterian Church where Peg has served as Sunday School teacher, Choir member, and member of the Women's Association and Circle.

Peg and Dale joined NCC in July 1979 and are active members of Study Group #7 "The Cambridge Buffs". They have approximately 100 pieces of Cambridge Rock Crystal engraved with the Achilles pattern. Their interest in Cambridge glass collecting is general in nature and they have many lovely pieces in their collection.

Much time and consideration was given by Peg before accepting her new job as *Crystal Ball* Editor. It is hoped that all NCC members will join President Kolb in giving our new Editor the support needed to assure the continued success of the *Cambridge Crystal Ball*.

National Cambridge Collectors, Inc.
Statement of Operating Income and Expense
For the Years ended December 31, 1980 and 1979

	<u>December 31</u> 1980	<u>December 31</u> 1979
Income:		
Prorated membership dues	\$ 8,168.97	\$ 7,047.40
Advertising	821.55	868.95
Sale of back issues of Crystal Ball	297.06	391.80
Other	<u>357.45</u>	<u>286.68</u>
Total income	<u>9,645.03</u>	<u>8,594.83</u>
Expense:		
Advertising	326.38	518.84
Office supplies	272.69	244.62
Postage and box rental	2,954.72	2,553.11
Printing Crystal Ball	2,921.11	2,120.30
Other	<u>476.91</u>	<u>362.69</u>
Total expense	<u>6,951.81</u>	<u>5,799.56</u>
Net operating income	2,693.22	2,795.27
Beginning Operating Fund Balance	<u>8,703.39</u>	<u>5,908.12</u>
Ending Operating Fund Balance	<u>\$ 11,396.61</u>	<u>\$ 8,703.39</u>

National Cambridge Collectors, Inc.
Statement of Museum Income
For the Years ended December 31, 1980 and 1979

	<u>December 31</u> 1980	<u>December 31</u> 1979
All Cambridge Glass Auction	\$ 1,526.53	\$ 1,106.88
Antique Show	2,313.08	1,441.17
Book sales, net	2,433.53	1,825.14
Bookend sales	5,596.94	
Donations	1,386.81	723.63
Interest	6,043.34	3,139.17
Other	175.81	20.64
Paperweights	56.20	
Rental income, net	(3,686.35)	
Royalties	<u>1,837.13</u>	<u>2,064.00</u>
Net income to Museum fund	17,683.02	10,322.63
Beginning Museum Fund Balance	<u>39,109.78</u>	<u>28,787.15</u>
Ending Museum Bund Balance	<u>\$ 56,792.80</u>	<u>\$ 39,109.78</u>

National Cambridge Collectors, Inc.
Comparative Balance Sheets
At December 31, 1980 and 1979

Assets	<u>December 31</u> 1980	<u>December 31</u> 1979
Cash:		
Operating funds	\$ 591.76	\$ 1,297.03
Invested - unrestricted	23,711.79	48,509.29
- restricted	4,089.90	
	28,393.45	49,806.32
Receivables	1,640.62	79.50
Inventory	2,654.39	3,246.84
United States Treasury Note 9 3/8% due 12/82 - restricted	32,502.32	
Land	24,500.00	
Building net of \$762.50 depreciation	29,737.50	
Museum display assets.	1,606.38	883.47
Other assets	1,852.13	1,016.87
	\$122,886.79	\$ 55,033.00
Liabilities and Members' Equity		
Accounts payable	\$ 37.54	\$ 3,120.43
Mortgage payable - current portion	571.01	
Deferred membership dues	4,170.43	3,943.40
Other deferred income	599.00	156.00
Accrued real estate taxes	279.45	
	5,657.43	7,219.83
Total current liabilities		
Mortgage payable - long term	49,039.95	
	54,697.38	7,219.83
Total liabilities		
Members' Equity:		
Operating fund	11,396.61	8,703.39
Museum fund	56,792.80	39,109.78
	68,189.41	47,813.17
Total members' equity		
Total liabilities and members' equity	\$122,886.79	\$ 55,033.00

PROJECTS

by Willard Kolb
Project Chairman

We have taken shipment on the Scotty Dog bookends. Your orders for the pre-Convention sales should have reached us by the time you read this article. We hope to have some of the orders processed and the bookends shipped to you before Convention (for those of you who aren't going to

pick yours up at Convention). If this doesn't come about, you will be receiving yours shortly after Convention.

For those of you who didn't get your order in before Convention, and for those of you who want the second one, please fill out the revised order blank attached to the front of your *Crystal Ball* and send it as soon as possible. Keep in mind that the main differences in the two order blanks are that the price increased to \$30.00 per bookend as of Friday June 26th and the number available per member has increased to five. These will be sold on a *first come-first served* basis.

WE GET LETTERS

Dear Phyllis, Enjoyed your article on Near Cut in the *Crystal Ball*. I wanted to show you what we managed to do with the Daisy lamp base we found. We had the Daisy Punch Bowl set so we used the bowl as a shade. It is beautiful.



PHOTO #1

What I'm wondering is, our lamp came with a Glass Shade holder, and in Welker's Catalog II, on page 117, the #2792 Portable has what looks like the shade holder. I'm wondering if the Glass Shade Holder has been seen by other NCC members. A friend seemed to think the shade was a Heisey piece. I've never seen a shade with a flanged bottom as this one has.

Sincerely, Jane Rogers, MO

Dear Jane, Until I received your letter, the Shade Holder had never caught my eye, and I have studied that catalog page many times. But now that you have brought it to my attention, I am very much interested in seeing one. The one in your photo (photo #1) doesn't seem to be exactly like the one shown in the catalog, but then your's is on a different

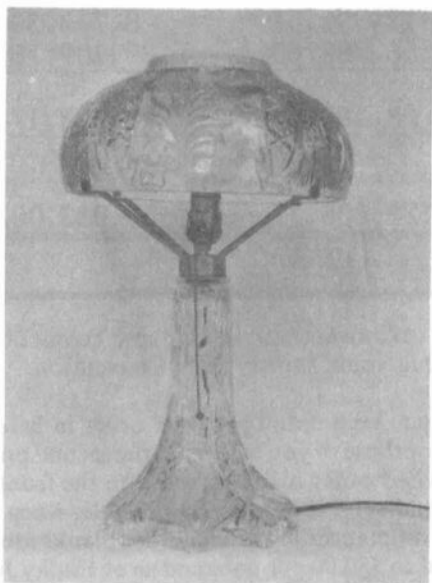


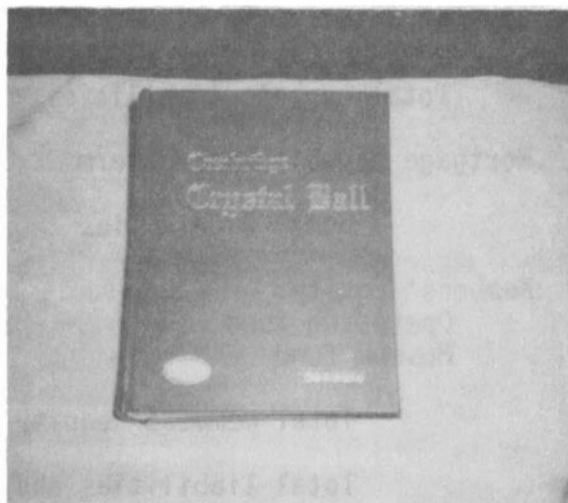
PHOTO #2

lamp and I feel sure there would have been some differences in the various holders. You will note that the patent all Glass Shade Holder on the small #2801 lamp right beside the #2792 is also different in shape. I do hope you will be able to bring your lamp to the Convention for all to study. It's not sure that we can prove positively that your shade holder was made by the Cambridge Glass Company, but until it can be proven that it was not, then it is my feeling that it will have to be accepted as Cambridge!

The up-side-down punch bowl makes a very nice shade for your lamp. Photo #2 shows our Daisy lamp with the other type holder and the original shade, but as you can see, it isn't complete - it lacks the bowl like cover for the top.

I can't help but comment on the other pieces of Cambridge glass you have setting with your lamp. The Carmen Shell flower center; the light emerald green vase with the RARE Windsor etching, with gold trim around the top; and the lovely basketweave vase in rubina. Four extremely lovely pieces of Cambridge Glass! Thanks for sharing. Phyllis

Dear Phyllis, We were pleased to read in the May 1981 issue of the *Crystal Ball* about the lady who decided to keep her membership paid up in the NCC group and the *Crystal Ball*. We are relatively new members in the group (February 1981) so to accumulate the back issues of the *Crystal Ball*, we had to purchase all the back ones. I'm sure glad we did. We have gleaned a mountain of information from these monthlies; so being in the bookbinding business I thought it would be



worthwhile to bind them. The enclosed picture of the book bound in leather shows what a wonderful work aid this can be to anyone who are Cambridge glass collectors like ourselves.

Ted & Shirley Hirshberg, CA

Dear Ted and Shirley, Thanks so much for your letter and the photo of your bound copies of the Crystal Ball. The Board of Directors have discussed from time to time the possibility of selling binders similar to yours as a money-making project for the Club, but nothing has ever been arranged. Looks like a marvelous idea to me! Phyllis



No. 3725 - 7 OZ. TALL SHERBET



No. 3725 - 4 1/2 OZ. CLARET



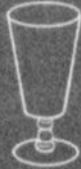
No. 3725 - 7 OZ. LOW SHERBET



No. 3725
12 OZ. FOOTED ICE TEA



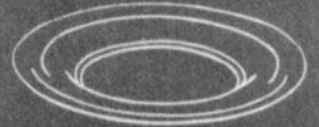
No. 3725 - 2 1/2 OZ. WINE



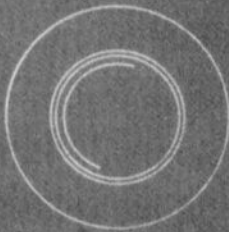
No. 3725
5 OZ. FOOTED TUMBLER



No. 3725 - 2 1/2 OZ. COCKTAIL



No. 555 - 7 1/2" SALAD PLATE



No. 556 - 8" SALAD PLATE



No. 3725 - 1 OZ. CORDIAL



No. 3725
4 1/2 OZ. OYSTER COCKTAIL



No. 3725 - 9 OZ. GOBLET

Castleton

No. 3725



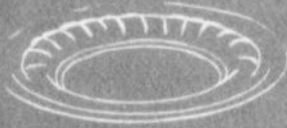
THE CAMBRIDGE GLASS COMPANY, CAMBRIDGE, OHIO, U. S. A.



No. 1401 — 1 OZ. CORDIAL



No. 1401 — 10 OZ. LOW GOBLET



No. 1401 — 8" SALAD PLATE



No. 1401 — 4 1/2 OZ. CLARET



No. 1401 — 6 OZ. LOW SHERBET



No. 1401
12 OZ. FOOTED ICE TEA



No. 1401
5 OZ. FOOTED TUMBLER



No. 1401 — 10 OZ. TALL GOBLET



No. 1401 — 10 OZ. TALL GOBLET

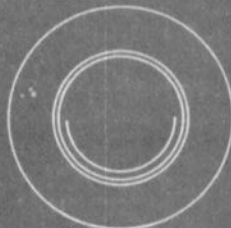
Jefferson

No. 1401

MANDARIN GOLD
EMERALD
CRYSTAL



No. 1401
3 1/2 OZ. COCKTAIL OR WINE



No. 556 — 8" SALAD PLATE



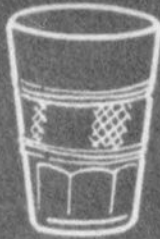
No. 1401 — 6 OZ. TALL SHERBET



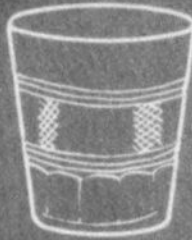
THE CAMBRIDGE GLASS COMPANY, CAMBRIDGE, OHIO, U. S. A.



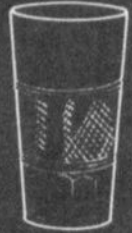
No. 27 - 3 OZ. WINE



No. 55 - 2 OZ. TUMBLER



No. 57 - 7 OZ. O. F. COCKTAIL



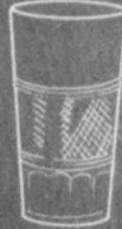
No. 59 - 14 OZ. TUMBLER



No. 56 - 5 OZ. TUMBLER



No. 87
1 OZ. FOOTED CORDIAL



No. 58 - 10 OZ. TUMBLER



No. 51 - 10 OZ. TABLE TUMBLER



No. 2 - 6 1/2 OZ. TALL SHERBET



No. 20
12 OZ. FOOTED TUMBLER



No. 21
5 OZ. FOOTED TUMBLER



No. 26 - 3 1/2 OZ. COCKTAIL

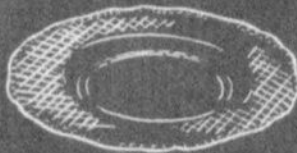
Mount Vernon



No. 1 - 10 OZ. GOBLET



No. 3
10 OZ. FOOTED TUMBLER



No. 5 - 8 1/2" SALAD PLATE

No. 19
6 3/4" BREAD AND BUTTER PLATE



No. 23
FINGERBOWL PLATE (19)



No. 22
3 OZ. FOOTED TUMBLER

Regency



REGENCY
12 OZ. FOOTED ICE TEA



REGENCY — 10 OZ. GOBLET



REGENCY — 7 OZ. TALL SHERBET



REGENCY — 3 1/2 OZ. COCKTAIL



REGENCY
10 OZ. FOOTED TUMBLER



REGENCY — 7 OZ. LOW SHERBET



REGENCY — 3 OZ. WINE



REGENCY
4 1/2 OZ. OYSTER COCKTAIL



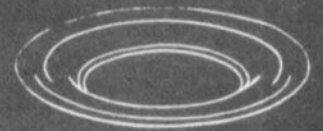
REGENCY
5 OZ. FOOTED TUMBLER



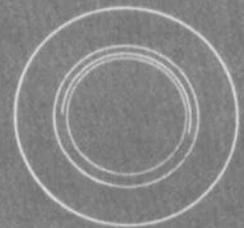
REGENCY — 1 OZ. CORDIAL



REGENCY — 4 1/2 OZ. CLARET



No. 555 — 7 1/2" SALAD PLATE



No. 556 — 8" SALAD PLATE



THE CAMBRIDGE GLASS COMPANY, CAMBRIDGE, OHIO, U. S. A.

MEMBERSHIP CONTEST ENDS IN TIE!

by Phyllis Smith

Membership Chairman Jo Barstow has announced that our Membership Contest is over, and that there were two lucky winners this year! Naomi Gamble of Cuyahoga Falls, Ohio, and Doris Isaacs of Cambridge, Ohio, tied for 1st Place, in the Contest which ended June 1st.

They will be presented with their prize during this year's Convention, at the Saturday evening Banquet. A personalized Paperweight, hand made by Tom Moser for each of them, will be awarded. Congratulations are in order for Naomi and Doris, for the splendid job they did of bringing in eight new members each, to become our winners.

All in all, the Contest was a great success. There were a total of 58 members who actively participated this year. It's too bad they can't all be awarded a Prize, but since that is impossible, we do want to publicly acknowledge their efforts.

Bringing in a total of three members each were: Jim Ahlstrand; Beverley Hanson; and Mary Henderson. Right behind them with two members each were: Evelyn Allen; Mr. & Mrs. Richard Beach; Tom & Harriette Bond; Clara Brown; Laurie Cruise; Alberta Eberwein; Reba Embree; Glen Everett; Phyllis & Harry Freier; Martha Gilbert; Shirley & Austin Hartsock; Karen Jones; Frank & Melbra Long; George Fogg & Frank Maloney; Barbara Simmons; Al Steele; and Charles Upton.

Bringing in one new member each were the following: Dr. John Adams; Ronald Beer; Joyce Colangelo; Jane & Jean Carey; Dr. Frederick Cox; Victoria Hammersley; Vicki Harman; Barbara Hellmann; Sandra Hunnicutt; Ann Kerr; Shirley Ladoucer; David Lake; Faith Lasher; Joy McFadden; Portia Oldham; Arlyn & Len Ols; Joanne Paul; William Price; Doris Schwartz; Edward Shaw; Mickey Sipe; Richard Slifko; Deborah Snyder; Albert Springborn; Mrs. G. W. Stone; Michael Strebler; Donald Tinney; Connie Williams; and Aniceta Zamborsky.

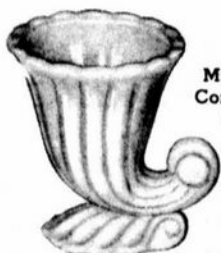
Members of the NCC Board of Directors and their families were not eligible to enter the Contest, but that did not stop several of them from signing up new members during the year. Those participating were: Don and Odulla Armbricht; Jo Barstow; George Hoffman; Janice Hughes; Willard Kolb; Susan Rankin; and Bill & Phyllis Smith.

Thanks to everyone who participated, and if you didn't win this year, be sure to try again next year!

Miscellaneous



P. 578
Miniature
Cornucopia
Coral



702
Miniature
Cornucopia
Coral

— Classified —

WANTED: CAMBRIDGE ROYAL BLUE - Anything - but love Nude Stem items. If you see Cobalt -- think COBALT CAROL Markowski, 3141 West Platte Ave., Colorado Springs, CO 80904.

BUYING: CAMBRIDGE ROSEPOINT; Depression Glass; Heisey Rose and Orchid; and Fostoria etched dinnerware. Also glass figures and unusual pieces. Nadine Pankow, 207 S. Oakwood, Willow Springs, IL 60480. Phone: 312/839-5231.

WANTED: ANTIQUE TYPEWRITERS. Collector seeks unusual early writing machines, both adult and children's models. Please describe and price. Mike Brooks, 3529 Lincoln Avenue, Oakland, CA 94602. Phone: 415/530-7474.

STUDY CLUB NEWS - continued from page 2

STUDY GROUP #8 - SOUTHERN MICHIGAN "THE MICHIGAN CAPRICES"

The Michigan Caprices Study Group attended the Great Lakes Depression Glass Show at Oakland University, on May 16th. The members were surprised at how many Cambridge etchings they were able to identify from our study at the last meeting.

Some of the items purchased were: crystal Gadroon honey dish; #250 etched peachblo asparagus dish; and peachblo Decagon cups, saucers, and salad plates.

While in the area we shopped at antique shops in Royal Oak, MI. The good news is that we saw a Japonica vase in amethyst for \$1,200.00. The bad news is that we left it at the antique shop. Are you interested? We also saw for the first time a small bowl in dark emerald green Caprice.

On the way home the members stopped at the home of Ray and Clara Brown to make plans for our attendance at the NCC Convention in June.

submitted by Betty Dasen, Secretary

Editor's Note: I think this might be the proper place to add a final few words to you good friends, as I put the finishing touches on this, my last issue of the *Crystal Ball*. It has been a long six years, but I will have to admit that I have enjoyed the experience - it has been a learning experience for me as well as you.

I'm not saying "Good-bye", because I'm not really leaving. I intend to continue to write articles, and help-out where ever I can. By resigning as Editor, it is my hope that I will have more time to do more research, so that even more information can be shared with you thru the *Crystal Ball*. Our new Editor is going to need help -- I intend to help her, and I hope that you will also!

I've written and rewritten a thousand words it seems, trying to express how I feel as I prepare to send this issue off to the printer for the very last time. I've come to the conclusion that there is no way I can say the many "thanks" that need to be said to all those who have helped me during these last seventy-two months. I just hope that you will all know how very much I have appreciated your efforts!

As the saying goes "Old Editors never die ---" this one is just going to clean a few closets, do some more research, write a few articles, and do what she can to promote the best glass club around, National Cambridge Collectors, Inc. I'll be seeing you! *Phyllis*

DEALERS



DIRECTORY

NOTE: When writing to the Dealers listed here, please enclose a SASE!

<p>EVELYN M. ALLEN 135 Cynthia Street Heath, Ohio 43055 Mail Order & Shows 614-522-1635 SPECIALIZING IN CAMBRIDGE GLASS!</p>	<p>BENICIA ANTIQUE SHOP 305 First Street Benicia, California 94510 OPEN 11 AM - 5 PM Closed Monday Z. E. LOPES 707-745-0978 VISIT HISTORIC BENICIA and its 28 shops Off Interstate #80 North of San Francisco</p>	<p>CHARLES MIKULIK Box 416 Elizabeth, N.J. 07207 — COLLECTOR — Always paying good prices for CAMBRIDGE CAPRICE in all colors 201-688-1144 CARRY MOST TYPES OF ANTIQUES</p>
<p>BLACK ROOSTER ANTIQUES 1018 Clark Street Cambridge, Ohio 43725 614-432-3202 M. Sipe CAMBRIDGE GLASS - GENERAL LINE</p>	<p>ANDREJCAK'S ANTIQUES 14533 Bayes Ave. Lakewood, Ohio 44107 Joe & Karen Andrejcek 216-226-3417 SHOWS ONLY — CAMBRIDGE — FENTON — CHINA</p>	<p><i>YOU CAN ADVERTISE YOUR ANTIQUE SHOP HERE!</i> 1 inch - \$6 for six months</p>
<p>BERKELEY ANTIQUES 69 Berkeley St. Boston, MA 02116 George or Frank 617-426-1048 CAMBRIDGE, HEISEY, GENERAL LINE</p>	<p>THE HITCHING POST 7467 S. R. 88 Ravenna, OH 44266 Ph. 216-296-3686 D. McDaniel CAMBRIDGE — HEISEY — GENERAL LINE</p>	<p>FINDER'S KEEPER'S ANTIQUES P.O. Box 303 P.O. Box 16023 Dayton, O. Columbus, O. 45401 43216 513-254-2937 614-885-2726 SPECIALIZING IN CAMBRIDGE GLASS!</p>
<p>D & D ANTIQUES Columbus, Ohio DICK SLIFKO SHOWS ONLY</p>	<p>GEORGE HOFFMAN ANTIQUES 129 South 4th Street Newark, Ohio 43055 614-345-8021</p>	<p>'OUR GLASS ANTIQUES Box 27, Wills Point, Texas 75169 20th CENTURY COLLECTIBLES featuring CAMBRIDGE GLASS! Shows - No Lists - SASE Please PAUL & GINNY HENDERSON 214-563-6971</p>
<p>THE GLASS CUPBOARD 39 Shire Oaks Drive Pittsford, New York 14534 Marcia Ellis 716-586-7596 CAMBRIDGE ONLY SASE FOR LIST</p>	<p>THE KRAUSE'S 944 Jefferson Ave. Washington, PA 15301 John & Gail Krause 412-228-5033 SPECIALIZING IN DUNCAN MILLER GLASS</p>	<p>1886 HOUSE East Schodack, N.Y. 12063 MAIL and SHOWS Laurie Cruise 518-477-5895 CAMBRIDGE - NORITAKE - AZALEA - D.G.</p>
<p><i>YOU CAN ADVERTISE YOUR ANTIQUE SHOP HERE!</i> 1 inch - \$6 for six months</p>	<p>ROLLING ACRES ANTIQUES 66484 N. 8th Street Road Cambridge, Ohio 43725 Sandy Jenkins & Anne Ingram 614-432-2570 CAMBRIDGE & GENERAL LINE ANTIQUES</p>	<p>BILL & SHARON PHILLIPS 21730 Priday Euclid, Ohio 44123 Ph. 216-261-4665 Shows Only BUYING GLASS, ANTIQUES, ETC.</p>
<p>STAGE COACH ANTIQUE MALL 7525 (Rt. 40E) East Pike Norwich, Ohio 43767 SOMETHING FOR EVERYONE Open every day, year round — 614-872-3720</p>	<p>AL STEELE Westerville, Ohio 614-882-6483 or 614-882-7124 Mail Orders and Shows Only HEISEY — CAMBRIDGE — PATTERN GLASS</p>	<p>SWISS HILLS COLLECTIBLES 303 Guilford Ave., Woodsfield, OH 43793 Mary & Wilbur Henderson 614/472-1133 SPECIALIZING IN CAMBRIDGE GLASS Shows, Mail & Stagecoach Antique Mall</p>
<p>CHARLES A. SHAW Glenwood Gardens - R.V.W.1B Yonkers, NY 10701 AMERICAN GLASS — 914-476-5175 SHOWS & MAIL ORDER!</p>	<p>SHIRLEY S. LADOUCEUR Antiques and Collectibles Specializing in Cambridge Glass BY APPOINTMENT 7597 Daphne Drive 315-458-5297 No. Syracuse, NY 13212</p>	<p><i>YOU CAN ADVERTISE YOUR ANTIQUE SHOP HERE!</i> 1 inch - \$6 for six months</p>
<p>MARGARET LANE ANTIQUES 2 E. Main St., New Concord, OH 43762 Lynn Welker 614/826-4418 CAMBRIDGE GLASS MATCHING SERVICE Hours Mon.-Fri. 1-5 PM or by Appointment</p>		



National Cambridge Collectors, Inc.

P. O. Box 416, Cambridge, Ohio 43725

A nonprofit organization dedicated to the preservation and study of Cambridge Glass

You Are Cordially Invited
To Become A Member Of The

NATIONAL CAMBRIDGE COLLECTORS, INC.

Benefits derived from membership include: receipt of our club publication, The Cambridge CRYSTAL BALL; informative Quarterly Meetings; Antique Shows; Auctions; and other special events.

The Cambridge CRYSTAL BALL is published the first of each month. This newsletter contains educational and interesting articles, questions and answers, information on reproductions and reissues, notices of all club functions, classified advertisements, dealers directory, and many other features of interest to collectors of Cambridge Glass.

Yearly dues are \$10.00 for Individual Members and \$3.00 for each Associate Member. All members have voting rights, but only one issue of the CRYSTAL BALL will be mailed per household.

Name (please print) _____ \$10.00

Mailing Address _____

City _____ State _____ Zip _____

Associate Members: (Must be at least 12 years of age and living in the same household.)

1. Name _____
 2. Name _____
 3. Name _____
- Total number of Associate Members _____ @ \$3.00 each \$ _____

TOTAL AMOUNT ENCLOSED: \$ _____

Please make check payable to: NATIONAL CAMBRIDGE COLLECTORS, INC.

Recommended by _____

USE THIS APPLICATION - NCC MEMBERSHIP MAKES A "GREAT GIFT"!

National Cambridge Collectors, Inc.

P. O. Box 416 Cambridge, Ohio 43725



FIRST CLASS MAIL



"I pledge allegiance to The Flag of the United States of America and to the Republic for which it stands; one nation under God, indivisible, with liberty and justice for all."
PLEDGE TO THE FLAG

Best Wishes for a Safe & Happy Fourth of July