

Cambridge



Crystal Ball

ISSUE NO. 112

AUGUST 1982

Published monthly by the NATIONAL CAMBRIDGE COLLECTORS, Inc.
To encourage and to report the discovery of the elegant and boundless product
of the Cambridge Glass Company, Cambridge, Ohio

THOUGHTS from your President . . .

Those of you who did not get a chance to attend the Convention or show will have an opportunity to read about the activities in this issue of the *Crystal Ball*, so I won't dwell on those in this article except to say that you missed a fun weekend.

The MUSEUM dedication was probably the highlight of the weekend. People who had not been able to see the progress through the year, but only knew that we were in the process of establishing a MUSEUM, were quite shocked when they arrived for the dedication and were taken inside to view the displays. For those of you who were not able to attend, I can only tell you that it is a MUSEUM that you can be proud of. We hope you will visit it, use it and support it. It is the culmination of the efforts of many people through the years, beginning in May of 1973 when the National Cambridge Collectors Inc. was established. It is not, however, the final effort of the organization. We are still in quest of a larger and permanent MUSEUM where we will be able to have a more comprehensive display of the products of the Cambridge Glass Co. and other memorabilia connected with these products.

In your last issue of the *Crystal Ball* the MUSEUM hours and the admission charges were published. One change to note is the hours on Tuesdays through Fridays. The hours are from 1:00 to 4:00 P.M. I guess this isn't really a change but a mistake on my part when I wrote the article. The other change is the admission charge for members. It was decided at the Board meeting prior to the Convention that the MUSEUM really belongs to the members and therefore they should not be charged admission. The charges for non-members will remain the same. We will, however, accept your donations at the MUSEUM.

In your minutes of the Annual Meeting you will see that a motion was made to increase the "Master Membership" dues to \$13 annually, beginning with all renewals and new memberships after September 1, 1982. The motion was passed unanimously. This motion stemmed from facts in the Budget and Finance Committee report given at the Board of Directors meeting prior to the Annual Meeting and also at the Annual Meeting.

Although this came at the same time the MUSEUM was opened, it had nothing whatsoever to do with the operation of the MUSEUM. The MUSEUM is funded through projects such as the bookends, mini-auction, flea market, book sales, contributions, etc., and is altogether separate from the operating fund. The operating fund is made up primarily of the previous \$10 dues and the \$3 associate dues. From this fund must come the printing and mailing of the *Crystal Ball*, advertising of certain types, printing of necessary forms and applications, and various other expenses. The printing and mailing of the *Crystal Ball* alone takes approximately \$9.12 of the \$10 master dues per member per year. (\$.37 postage + \$.39 printing per copy X 12 issues a year = \$9.12)

By the end of this year, with ever increasing costs, it was projected that we would be at a break even point or worse. The \$3 increase should see us through for several years. It will be spent wisely as it has always been in the past. I know that persons responsible for the operation and success of the Club through the years have at times spent their own monies, used their own materials, and the facilities of other persons to help stay within the operating funds of the Club. It is a tribute to their dedication that the Club has been able to operate so long with available funds. We have now asked for your help.

Willard

MEMBERSHIP RENEWAL NOTICE

If the date on your
address label is - -

8-82

This is your LAST ISSUE of the CRYSTAL BALL.

Please renew NOW!

MUSEUM Telephone Number
614-432-4245

CAMBRIDGE CRYSTAL BALL

Official publication of National Cambridge Collectors, Inc., a non-profit corporation with tax exempt status. Published once a month for the benefit of its members.

Membership is available for individual members at \$10 per year and additional members (12 years of age and residing in the same household) at \$3 each. All members have voting rights, but only one *Crystal Ball* will be mailed per household.

Back issues of the *Crystal Ball* are available (beginning with Issue No. 1, May 1973) for members only. Cost: \$.60 each or 12 issues for \$7.

1981-82 OFFICERS & COMMITTEE CHAIRPERSONS

PRESIDENT Willard Kolb
VICE-PRESIDENT Josephine Barstow
SECRETARY Janice Hughes
TREASURER William Smith
SERGEANT-AT-ARMS Don Armbrecht

BOOK SALES Meg Turner
BUDGET & FINANCE David Rankin
BY-LAWS David Rankin
CONVENTION Josephine Barstow
MEMBERSHIP Phyllis Smith
MUSEUM Billy Harbaugh
PROGRAM & ENTERTAINMENT Frank Wollenhaupt
PROJECT Willard Kolb
PUBLIC RELATIONS William Smith
PUBLICITY Joseph Andrejcek
STUDY GROUP ADVISORY Jack Rettig
1982 ALL-CAMBRIDGE AUCTION Lynn Welker
1982 ANTIQUE SHOW Joy McFadden

CRYSTAL BALL EDITOR Peg Gotschall

CLASSIFIED ADVERTISING RATES

5c per word \$1.00 minimum
We cannot mix type size in classified advertisements. Abbreviations and initials will count as words. Payment in full MUST accompany all ads.

DISPLAY ADVERTISING RATES

	Members	Non-Members
1/8 page	\$ 4.00	\$ 6.00
1/4 page	7.00	10.00
1/2 page	12.00	18.00
3/4 page	17.00	25.00
Full page	22.00	33.00

DEALERS DIRECTORY

1" ad (5 line maximum) \$6.00 for 6 months

Cambridge Crystal Ball assumes no responsibility for items advertised and will not be responsible for error in price, description or other information.

Advertising copy must be in our hands by the 10th of each month to assure publication in our next issue. Advertisements containing reproductions will not knowingly be accepted unless clearly stated.

PLEASE ADDRESS ALL CORRESPONDENCE TO

Cambridge Crystal Ball
National Cambridge Collectors, Inc.
P.O. Box 416
Cambridge, Ohio 43725

Janice Hughes, Secretary Phone 614-432-7823

Willard Kolb, President Phone 614-695-0695

PLEASE NOTIFY US IMMEDIATELY OF ANY CHANGE IN YOUR ADDRESS!

Please enclose a self-addressed stamped envelope when requesting information!!

Club News

National Cambridge Collectors, Inc.
Ninth Annual Meeting
June 27, 1982
Shenandoah Inn, Old Washington, Ohio

The meeting was called to order at 10:15 A.M. by President Kolb. In attendance were 12 Board Members and 127 club members from 20 states. The minutes of the February 26, 1982 Quarterly Meeting were read by Janice Hughes and approved. The Treasurer's report was given by Bill Smith showing the Operating Equity as of May 31, 1982 to be \$13,407.15 and the Museum Equity \$73,978.37. He also explained to the membership the difference between the two funds.

COMMITTEE REPORTS:

BY-LAWS: No report.

CONVENTION: Chairman Jo Barstow thanked everyone who had assisted with the Convention and Beverly Hanson for donating the note pads with the Cambridge seal for registration.

CRYSTAL BALL: Editor Peg Gotschall thanked everyone for submitting articles this past year and stated with the catalog pages being completed she would need more articles this year. She also reported the ads get good results and are inexpensive.

MEMBERSHIP: Chairman Phyllis Smith reported we now have 1182 members from all the states and Canada except Idaho, Maine, Vermont and Rhode Island. The five leading states are Ohio, California, Texas, New York, and Michigan. The winner of the membership contest was Naomi Gamble with 10 new members. Mrs. Smith also reported complimentary copies of the *Crystal Ball* and membership applications are available for anyone.

STUDY GROUP ADVISORY: President Kolb reported there are 8 active study groups. He read a letter from the California Cambridge Collectors and accepted a check in the amount of \$400 for the Museum Fund.

Six of the Michigan Caprices were present and thanked everyone for a very enjoyable year.

Bill Smith reported for the Florida Everglades. They will have a slide presentation on Caprice available to rent soon and donated 5 salad plates to the Museum.

Eight of the Cambridge Squares were present. Janice Hughes reported they had purchased 20 stems this past year for the Museum. All the stems are on display in the Museum. She thanked everyone for purchasing tickets.

Karen Jones reported the Cambridge Buffs are purchasing Near Cut for the Museum. They furnished the programs this year for the Show.

Marcia Ellis introduced the four members present from the Fingerlakes Study Group.

Three of the Tally Hos were present. Al Steele reported they will be having a consignment auction later this year.

Two of the Tuscan Crowns were present. Joyce Colangelo reported they were just getting organized and haven't decided on a project.

PUBLICITY: Chairman Joe Andrejcek reported ads and the Museum opening announcement have been in the major publications, newspapers and on radio.

BUDGET AND FINANCE: Chairman Dave Rankin reported with the cost of printing and postage the Operating fund is almost in the red.

MUSEUM: Chairman Bill Harbaugh reported the Museum is open and houses approximately 1800 pieces of Cambridge Glass. He thanked everyone who had worked on the Museum and furnished glass.

President Kolb recognized all the donors from the past year. Items donated at this time were; lobster plate, Tony Vimmer, blue willow etch cream soup, Dick & Elaine Storck, Encyclopedia of Duncan Glass, Gail Krause, original copy of THE CRYSTAL LADY film, Frank and Vicki Wollenhaupt, Cambridge Glass workers tools, Lyle, Mary & Lynn Welker.

PROGRAM: No report.

FLEA MARKET: Chairman Larry Hughes reported there were 80 spaces rented and thanked everyone who had assisted him.

COLOR BOOK: Bill Smith reported the book will contain 60 color plates. Photographing will take place in Springfield, Ohio on August 21 and 22. Colors needed are topaz, smoke, heatherbloom, mulberry and early blues. Frank Wollenhaupt reported a one page pocket sheet on colors will be made at the same time to be sold for reference.

PUBLIC RELATIONS: Bill Smith reported they attended the Clearwater, Florida show and will be attending the Glass Bash and the Three Rivers shows.

OLD BUSINESS: none

NEW BUSINESS: A motion was made by Frank Long to raise the master membership dues from \$10.00 to \$13.00 per year effective September 1, 1982. Motion carried.

A motion was made by Georgeann Henry for the By-Laws committee to consider changing the terms of a Board of Director to two consecutive terms. Motion carried.

The door prize, 1 free membership, was won by Al Steele. Lynn Welker conducted the Show and Tell program. President Kolb reported the 1983 Convention will be the last weekend in June.

A motion was made by Dave Rankin to adjourn at 11:50 A.M.

Janice Hughes,
Secretary

NEW PRICE GUIDE AVAILABLE

The 1982 Price Guide to the NCC 1930-34 Catalog Reprint is now available, and orders are being taken for it. Price is \$2.00 plus 25¢ postage and it can be ordered through the NCC address.

Study Club News

STUDY GROUP No. 5 - SOUTHERN CALIFORNIA "CALIFORNIA CAMBRIDGE COLLECTORS"

The May meeting of the California Cambridge Collectors was held on May 21st, 1982.

Old business consisted of planning our Christmas dinner. Bill Losch said he would check on a Chinese restaurant where he and Betty had eaten several times and had good food.

Beverly Hanson shared several lovely items during Show and Tell. One of the most impressive was a Gadroon three section covered candy in carmen. She also shared Chantilly Martha candleholders, Rosepoint Calla Lilly candleholders, Rosepoint celery and crown tuscan Seashell comport with a Charlton painted seaside scene.

My items for Show and Tell were: A carmen Decagon ice bucket, amber Boudoir Set consisting of a covered pitcher, tumbler and tray and a #274 10" light green, etched E743 bud vase w/gold trim.

At this meeting we had our annual auction. Although our group is small we each contributed several different items to the auction and the net collected was \$297. We plan to take money from our treasury to make up the difference in order to contribute a check for \$400 to the National Cambridge Collector's fund.

Betty Wanser won the prize this month. Her prize was a moonlight blue pickle dish but the pattern is unknown to us at this time. It did have the Cambridge mark, however.

submitted by Joan McDowell, Secretary

STUDY GROUP No. 8 - SOUTHERN MICHIGAN "THE MICHIGAN CAPRICES"

Just prior to the Cambridge Convention the Michigan Caprice Study Group met at the home of Frank and Phyllis Hayes to finish up work on the convention name tags.

The name tags were done in two shades of green in keeping with the convention color theme, with printing of names in a dark green. Green stars were affixed indicating entrance to the different convention affairs. Robert Dasen did the printing, Frank and Phyllis Hayes checked details, and Clara Brown typed up a master list of the names in alphabetical order.

The nicest part of this convention assignment was meeting so many of you at the registration table, and greeting you as you entered the meetings. We are already looking forward to seeing many of you again at the convention next year.

submitted by Betty Dasen

CONVENTION 82 YEAR OF THE MUSEUM

by Peg Gotschall



Ribbon Cutting for new MUSEUM

Photo by Ed Karas of the Daily Jeffersonian

Left to Right: Michelle Newton, Director Degenhart Paperweight & Glass Museum; Barbara Shaeffer, Editor/Publisher Glass Review Magazine; Bob Tracht, Executive Director Cambridge Area Chamber of Commerce; Dale Hileman, President Chamber of Commerce; Willard Kolb, President National Cambridge Collectors; Ohio State Rep. Tom Johnson; Sam Henderson, Vice-President Chamber of Commerce; Guernsey County Commissioner Andrew Rocker; James Caldwell, Board President, Degenhart Museum; Louise Ream, Executive Director Heisey Collectors of America.

On Friday, June 25th, 1982 at 3:30 P.M., the attention of a large gathering of people at Cambridge, Ohio was firmly fixed on a ribbon which would be cut to allow them to enter the beautiful new MUSEUM OF CAMBRIDGE GLASS.

Your President, Willard Kolb, gave a brief speech of dedication and was then assisted in cutting the ribbon by Ohio State Representative Tom Johnson (R-95). They were surrounded by other representatives and invited guests including those from the Cambridge Area Chamber of Commerce, the Visitors and Convention Bureau, the Guernsey County Commissioners, the Daily Jeffersonian, Degenhart Paperweight and Glass Museum, Glass Review Magazine, and the Heisey and Fostoria National Glass Collectors organizations.

Many Convention guests had arrived in time and were present, along with former Cambridge Glass employees and their families and other area residents. All were pleasantly surprised as they entered the newly renovated building which is carpeted and lined with glass display cases already holding over 1,800 pieces of glass. It is a joy to behold and a credit to the Cambridge Community, the memory and products of the Cambridge Glass Co., and to the founders and members of National Cambridge Collectors, Inc. who helped in any way to make it possible.

Some of our members have given far beyond expectation of themselves, their time and their resources. I will not even attempt to name them lest someone should be overlooked or slighted. But they know who they are and that they have put their efforts toward a lasting and worthwhile goal. We all can be proud of it, but those who made the greater effort can within themselves experience the greater sense of accomplishment.

I personally, and in behalf of the Club membership, would like to express my appreciation to all who in any way made this MUSEUM possible, and to all who came to share in the celebration of it.



Interior view of the MUSEUM

Photo by Ed Karas of the Daily Jeffersonian

CONVENTION '82 WAS:

a time for renewing old friendships
 and making new acquaintances
 a time for learning and observation
 a thing of beauty and a joy to behold
 a time to expand our collections
 good food at beautifully decorated tables
 a time of searching for something
 rare or desired
 a time of pride in our new MUSEUM
 a time for tending our business
 a time for fun — and for many — a time
 for work
 but now a time for happy memories and
 a time for looking forward
 to Convention '83

Serving as Convention Chairman again this year was Jo Barstow, who along with her committee chairmen, ran a smooth and well-planned affair.

She was ably assisted by six members of the Michigan Caprices Study Group who handled registration, made name tags and greeted the guests. They were Robert and Betty Dasen, Frank and Phyllis Hayes and Ray and Clara Brown.

Note pads with the Cambridge Seal were provided by Beverly Hanson of California, and Show programs were furnished by the Cambridge Buffs Study Group.

Our Book Sales Chairman, Meg Turner, and her helpers displayed and sold our books and publications.

Ruby and Gerald Landman were in charge of arrangements for the Research Room.

There was the traditional "line-up" of those waiting for Friday evening's Show Preview well in advance of opening time, and no one was disappointed once they were allowed in. Joy McFadden as Show Chairman, and 28 dealers from nine states presented a beautiful Show with many unusual and exceptional pieces on display. It was an outstanding Show. Joe Andrejcek has reviewed it for you.

Following the Show Preview was a Get Acquainted Party with welcoming remarks, refreshments, good conversation and another of the famous Kolb-Smith Auctions. The glass for the Mini-Auction was donated by members and purchased by members to benefit the MUSEUM, and as usual generated a lot of good fun. It was announced that Bill Smith, Frank Wollenhaupt and David Rankin had been elected to the Board of Directors for another term.

The second Cambridge Collectors Flea Market held at the Fairgrounds in Old Washington was the scene of much activity on Saturday, June 26th. It was arranged by Larry Hughes who reported 80 spaces rented, quite a sizeable growth over last year.

The Saturday morning Continental Breakfast speaker was Sid Garrett who worked as a glass cutter at Cambridge Glass Co. for 20 years and later at the La Flo Glass Co., owned and operated by Edwin E. Griffith who was also a glass cutter for Cambridge Glass Co.

Sid talked about his start at the Glass Co. as an Apprentice, working in the Stopper Grinding Department and then becoming a Journeyman cutter. He shared information on the Apprentice Program, pay and working conditions, as well as talking about actual cuttings and how they were made and polished. He displayed some cutter's tools of the trade and explained how they were used. He said there were many, many patterns. His favorite was the Vesta pattern and he displayed a beautiful bowl cut in that pattern.

The Laurel Wreath, Rondo and Harvest patterns were some that were cut most frequently. Most cuttings were made on crystal, and most of the fine cut Rock Crystal was shipped to New York and other East and West Coast areas. In 1937 there were 25 glass cutters at Cambridge Glass. Today there are only 3 of those cutters in the area.

Sid fielded many questions from the audience. We are grateful to him for his willingness to share his knowledge and experience. We have much to learn about Cambridge cut glass.

The Display Room presented a dazzling array of Cambridge greens. There were many rare and not so rare pieces, all beautifully displayed. There were pieces of Jade, Pomona Green, Pearl Green, Light Emerald, Old Emerald (Near Cut), Topaz, Forest Green, Pistachio and Dark Emerald. The committee in charge was: Lynn Welker, Jan Hughes, Jo Barstow, Bill Harbaugh, Vicki Wollenhaupt, Joy McFadden and Dean and Pauline Westfall.

The Saturday evening Banquet tables were made beautiful by Gail Grabow and her committee who made floral arrangements using green and crystal Cambridge bowls, flower figurals and candlesticks loaned by members. It is indeed a pleasure to see the beautiful Cambridge Glass in use as intended.

Our Banquet favors were especially attractive glass paperweights in a shade similar to topaz, with the Cambridge Glass Factory pictured in black.

Dr. James S. Measell, well-known authority on glass and author of several books and numerous articles about glass and glass companies, was the featured Banquet Speaker. His topic was "There's More to Glass Collecting Than Just Collecting Glass."

His speech, illustrated by slides, was well organized, fast paced, imaginative and truly entertaining as well as stimulating. In it he suggested whole new areas of collecting related to the glass industry in general or to the specific company which made one's glass collectibles.

Some of the items he suggested were: photographs of glass plants and their interiors and workers, original color ads, tools, molds, Union badges, factory badges, scrip money, stock certificates, postcards, original wrappings, salesman's samples, letterheads, booklets, trade catalogs, business cards, checks and many more.

Dr. Measell made many keen observations about the items he had collected and proved that much can be learned from the collection of such articles.

Following the Sunday morning Buffet Breakfast, the Annual Business Meeting was conducted by Willard Kolb, President. For a report on the meeting, see the Minutes under Club News. The Show and Tell program was conducted by Lynn Welker of New Concord and proved to be interesting and informative as usual.

NOTE:

Some of the photographs taken at the Convention did not develop. We are sorry because we hoped to have many good ones to share with you, but sometimes the best laid plans go awry.



SHOW ROOM

Joe Andrejcek's Review of the 7th Annual Antique Show & Sale

The 9th Annual Convention and 7th Cambridge Show and Sale can be judged as one of the best and hottest for the National Cambridge Collectors, Inc., if not "the" best ever. The show should be viewed in the proper perspective with economic conditions taken into consideration. Attendance was off from previous levels BUT the buying activity and the serious interest in Cambridge glass was a pleasant surprise to me. The show was viewed in a different light this year — as a dealer whose arms sometimes were tired from wrapping.

The year of the MUSEUM was 7 miles down the road on Route 40, but the 1982 Show and Sale was the year of what? Flower Frogs? Nude Stems? and/or etching in general and Rosepoint in particular? The first pieces of Cambridge glass that yelled out loud and clear to me ... Cambridge ... Cambridge ... were the cut Wild Rose 15 inch crystal Punch Bowl surrounded by 18 matching cups, by now safe in their new home down South. On the other side of the showroom was another set just like the first.

Everyone, well almost everyone, was awed at the large set of heatherbloom etched Portia dinnerware, and across the aisle an almost complete set of blue Cleo. All I could think of was how a spaghetti dinner would look served on those beautiful pieces. Milk Glass was well represented in one hot corner booth. There were two sizes of Martha Washington footed sugars and creamers. A W 132 8½ inch Fan Vase, a W 124 4½ inch vase, the 7½ inch Shell flower holder and the W 54 32 oz. jug. Did anyone look up in one of the booths to see the matching decorated crown tuscan Flying Nude bowls looking back at them? Other Flying Nudes were in Windsor blue and just plain old amber. Plain old, wow!

The regal looking royal blue turkey was there — or maybe his brother. If Rams Head bowls and Doric candlesticks are your favorite thing, you had choices this year — ebony or ivory (good name for a song). One ivory bowl had an ivory Rose Lady with the old style base, standing there in all her glory. See the May 1982 issue of the *Crystal Ball* for details.

If you saw red it was a Carmen 3400 line service for 12 or a Mt. Vernon decanter with glasses, or many Carmen bowls on various crystal stems. If you wanted blue: again, the Mt. Vernon Decanter with glasses, a Tally Ho top hat, a (believe it or not) 3400 line handleless 80 oz. jug with a sticker on the bottom that stated "handleless." It must have been a production item.

If you are a lover of small things in life, you missed a large variety of cordials in all the right colors and with all the stems represented. They all look so fragile but yet so beautiful.

There were very few smoke items this year except two covered, Georgian candy dishes. Speaking of Georgian, the tumblers were there as were three baskets in moonlight blue, gold and green. Swans of all sizes except the punch bowl were in almost all booths.

Near Cut Feather was very evident this year in a couple of booths from the State of New York. Do they know something or did it just tickle their fancy? Sorry! Last, but not least by any means, were the 10 or so pieces of Rubina scattered around the room and especially the basket that just sat there. It had good coloring and a good price but went unsold. Once again this year, as in the past, other Glass Houses were represented.



SHOW ROOM



**Rare Near Cut Fruit Stand made from Punch Bowl
Show & Tell item.**



Breakfast



Banquet



SHOW ROOM



Get Acquainted Party

MEMBERSHIP CONTEST RESULTS

by Phyllis Smith
Membership Chairman

For the third year in a row, it was Naomi Gamble of Cuyahoga Falls, OH, who was proclaimed the winner in the 1981-82 NCC Membership contest. For bringing in a total of ten new members during the past year, Naomi accepted her prize (paid registration to all 1982 Convention activities) during the Annual meeting held Sunday morning, June 27th. She later returned her prize as a donation to the MUSEUM fund. Naomi sets a wonderful example for everyone with her sincere devotion to, and promotion of, National Cambridge Collectors. Congratulations Naomi, for a job well done!

Our runner-up in this year's contest was Doris Isaacs who had shared the spotlight with Naomi last year. They tied for first place during our 1981 Convention. Congratulations go to Doris for bringing in a total of eight new members during the year.

In total there were fifty-six NCC families participating in our Membership Contest, including nine members of our Board of Directors. Everyone who participated in any way is to be commended. We would like to express special thanks to the following who did their part by bringing in one or more new members. Charles Weeks (6); Glen Everett, Peg Gotschall, Doris McDaniel, Debbie Snyder (4 each); Gail Grabow and Zeta Todd (3 each).

Bringing in two new members each were: Richard Beach; Sue & Bernard Boyd; Ray Eibel; Wilmar & Helen Gilbert; Tom Gray; Dorothy Kilpatrick; Mickey Sipe; Al Steele; and Norma Warden.

The following participated by bringing in one new member each: Molly Ambrosio; Robert Baird; Judy Bennett; Tom & Harriette Bond; Shirley Brown; Paul & Bobette Carlton; Karen Chippi; Laurie Cruise; Bessie Dorsett; Brenda Ferguson; Inez Frost; Beverley Hanson; Tom Henderson; George Hoffman; Joyce Hutchinson; Vicky Kaffeman; Mrs. Guy Kinkeade; Ruth Lee; Mrs. James Mann; Fred McMorro; Lenore McNabb; Cathy Mushock; Katherine Nicolozakes; Naomi Opphile; Steven Pollock; Paul Roberts; Ann Sawdey, Eugenia Sexton; Neil & Ethel Unger; Barbara Walter; and Sheila Wishek.

Special congratulations must be extended to Board of Directors member Joe Andrejcek for bringing in nine new members this past year. Other Board members who participated by bringing in new members, even though they were not eligible to win, were: Janice & Larry Hughes; Willard & Norma Kolb; Ruby & Gerald Landman; Joy McFadden; Dave & Sue Rankin; Bill & Phyllis Smith; Lynn Welker; and Frank & Vicki Wollenhaupt.

Our membership now totals 1,182 and is growing every day. We have members in every state with the exception of Idaho, Maine, Rhode Island and Vermont. Ohio has the largest number of members (almost 400) with close to 150 of those living in the Cambridge and surrounding area. States having fifty or more members include: California; Florida; Michigan; New York; and Texas. States with fifteen or more members include: Colorado; Connecticut; Illinois; Indiana; Kansas; Maryland; Massachusetts; Minnesota; New Jersey; Oklahoma; Pennsylvania; Virginia; Washington; and Wisconsin. All others have fifteen or less members.



Naomi Gamble

WE GET LETTERS

Janice Rzeszotarski writes: "Won't you please do some articles on Decagon?" How about someone volunteering to do so?

Peg

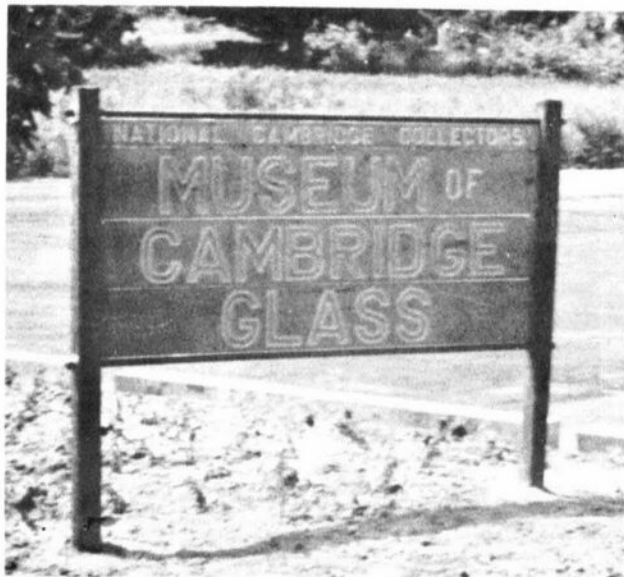
I was interested in the article on Patented Flower Frogs in the May issue of the *Crystal Ball*. The writer of the article said they would like to know how many other collectors had patent numbers on their frogs.

Between my mother and myself we have 83 flower frogs in all sizes and colors of the Draped Ladies, Rose Ladies, Mandolin Ladies, Bashful Charlotte, Two Kid, Mellon Boys, Sea Gull and Heron. We found 45 frogs had the Patent Number 1,645,577 on them.

Sincerely, Darla Maydole, California

Thanks for your reply, Darla. I know Paul Miller, who submitted the Patent Information for the May issue, will be pleased with your information.

Peg



STUDY GROUP No. 9 - NEWARK, CENTRAL OHIO "THE TALLY HO'S"

The Tally Ho's Study Group met on June 26th at Shenandoah Inn while there for the NCC Convention. Six members were in attendance and we had a discussion on the plans for our September Auction and on the 1982 Show & Convention.

submitted by George W. Hoffman

STUDY GROUP No. 10 - LONG ISLAND, NY "THE TUSCAN CROWNS"

The second meeting of Tuscan Crowns Group was used for a Show and Tell Session where stems were discussed along with such etchings as Candlelight, Portia, Apple Blossom, Chantilly, etc. In addition, we were able to see a dianthus Nude stem Ivy Bowl, an Apple Blossom hurricane lamp and cordial, Rosepoint stems, carmen Tally Ho wine, and a blue Caprice rose bowl. We agreed to research the first fifty pages of Book I and bring in any item pictured for the next meeting. We will continue to have Show and Tell as it is the best means of identifying and it provides stimulus. Our next meeting will be held Thursday July 8th at the home of Rita Berg in East Patchogue, Long Island.

submitted by Barbara Siemsen

STUDY GROUP No. 3 - SOUTHERN FLORIDA "THE FLORIDA EVERGLADES"

The South Florida Everglades Cambridge Study Group met on April 28th at the home of Betty and Bob Bryner. Seven members and four guests were present. The program consisted of the first complete showing of the Caprice slide program being prepared by the group.

The May meeting of the South Florida Everglades Study Group was held at the home of John and Evelyn Knowles on the 18th of the month. The evening was once again devoted to a review of the most frequently seen Cambridge stemware lines and seven members and two guests participated. The highlight of the evening was the Show and Tell table on which sat a rarely seen Caprice reflector candlestick in crystal. Also being shown were six willow blue Appleblossom 3130 wines.

The June activity of the South Florida Everglades Study Group was the 1982 NCC Convention and Antique Show. Five members were able to attend this year's event. Two former members of our group, now residing in El Paso, Texas, were also able to join us. The Caprice slide program was introduced and publicly shown for the first time on Saturday. The program was well received by those in attendance, and on display were several pieces of Caprice not yet shown in the slides. One more photography session is scheduled this summer and we expect to have the program available for rental by September 1st. A full announcement will be forthcoming in the August or September Crystal Ball.

submitted by Mark Nye, Secretary

Doris Isaacs sends us this portion of an article from an old Woman's Home Companion. Wouldn't it be nice to cool off with Cambridge Square and this Claret Lemonade — or even plain ice water?

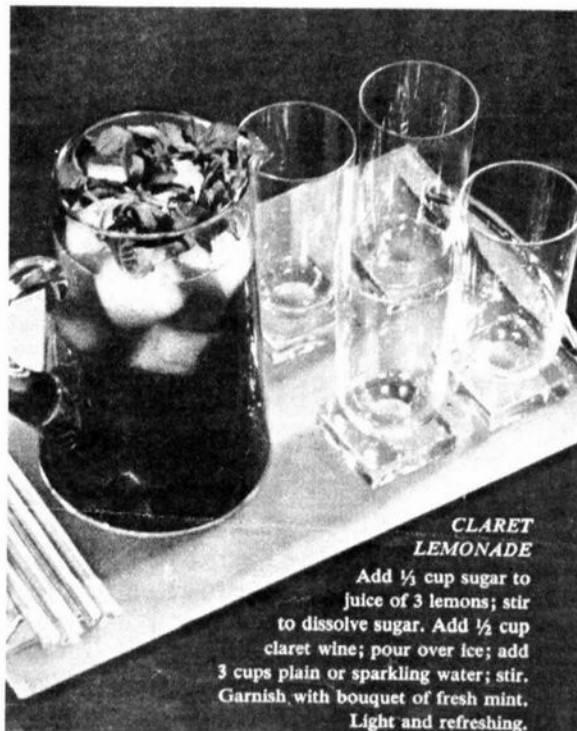


THE hot summer sun simmers in the sky. Even the leaves are still, too weary to stir. And the thermometer climbs up and up like Jack's beanstalk on its way out of sight. These are the days you need menu cool-cuts—and we have them for you!

With them you can prepare most of your dinner the night before it appears, or in the early morning. Then tuck it away in the chilly recesses of your refrigerator to thicken, blend, jell or whatever, leaving you free for the day's other demands.

And the possibilities reach out far beyond the frozen desserts that are your refrigerator's regular stock in trade. The Arctic cream soups, frosty chicken à la king and other summer dishes on these pages illustrate the many ways you can cool down while the temperature shoots up.

DOROTHY KIRK
FOOD EDITOR



CLARET LEMONADE

Add ½ cup sugar to juice of 3 lemons; stir to dissolve sugar. Add ½ cup claret wine; pour over ice; add 3 cups plain or sparkling water; stir. Garnish with bouquet of fresh mint. Light and refreshing.

— Classified —

FOR SALE: Rare Windsor Castle Vase, 11 inches tall. Crystal with gold band top and bottom. Windsor Castle etched two sides with lions on opposite sides. \$400. Cashiers Check or Money Order only. Mailing extra. MIKE LYMAN, 1361 Rowena Way, Sacramento, CA. 95825, (916) 489-9719 evenings.

WANTED: 9 oz. #3122 CAMBRIDGE DIANE water goblet. CLAYTON METCALF, 1045 S. Garrison, Carthage, MO. 64836.

TRADE: Amber Rose Lady on high base in exchange for Cambridge flower frog of like collectibility.

NEEDED: 3 plain peg nappies for Cambridge Arms. BARBARA HELLMANN, 266 Old Kelsey Point Road, Westbrook, Conn. 06498, (203) 399-9223.

WANTED: CAMBRIDGE ROYAL BLUE — Anything — but love Nude Stem items. If you see Cobalt — think COBALT CAROL Markowski, 3141 West Platte Ave., Colorado Springs, CO 80904

BUYING: Cambridge Rosepoint, Heisey Rose and Orchid, Fostoria etched dinnerware and Depression Glass. Also glass figures and unusual glass pieces. NADINE PANKOW, 207 S. Oakwood, Willow Springs, ILL. 60480. Phone: 312-839-5231

STAGE COACH ANTIQUE MALL

(formerly White Pillars Antiques)

7525 East Pike
Norwich, OH 43767
614/872-3720

MANY DEALERS

PLENTY OF PARKING

WIDE SELECTION OF GLASS
AND POTTERY
FURNITURE AND
GENERAL LINE!

BUY ----- SELL ----- TRADE

OPEN YEAR ROUND

Weekdays - 10 AM - 5:30 PM

Sunday - 12 noon - 5:30 PM

Summer Evening Hours - by Chancel

Located 9 miles E. of Zanesville, OH, on I-70 to Norwich Exit #164 - then 1/2 mile W. on Route 40.

WANTED:

Two Wine Glasses
in
Chantilly Pattern

Call 304-242-2946

Mrs. Lester C. Hess, Jr.

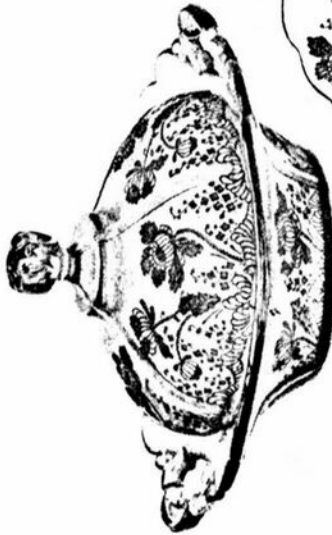
R.D. 2 - Box 297

Triadelphia, W.VA. 26059

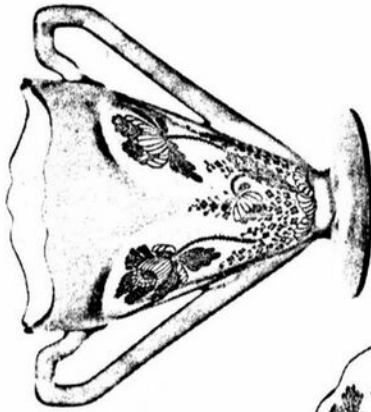


DISPLAY ROOM

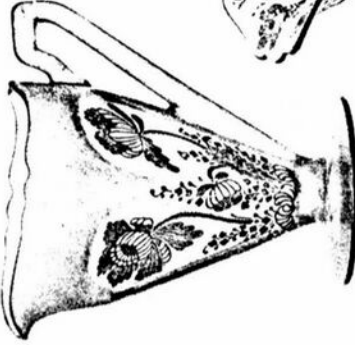
3400 Dinnerware Plate Etched 746 "Gloria"



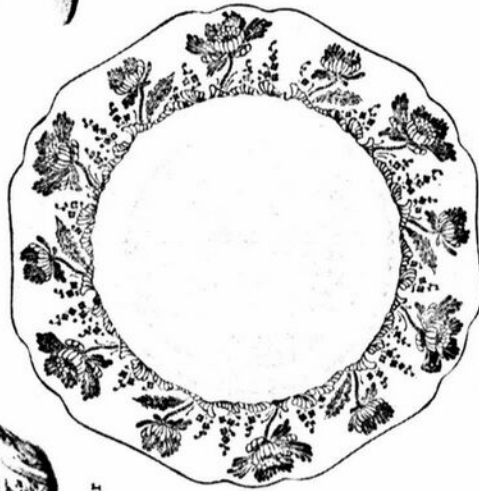
3400/52-5½" Butter
and Cover



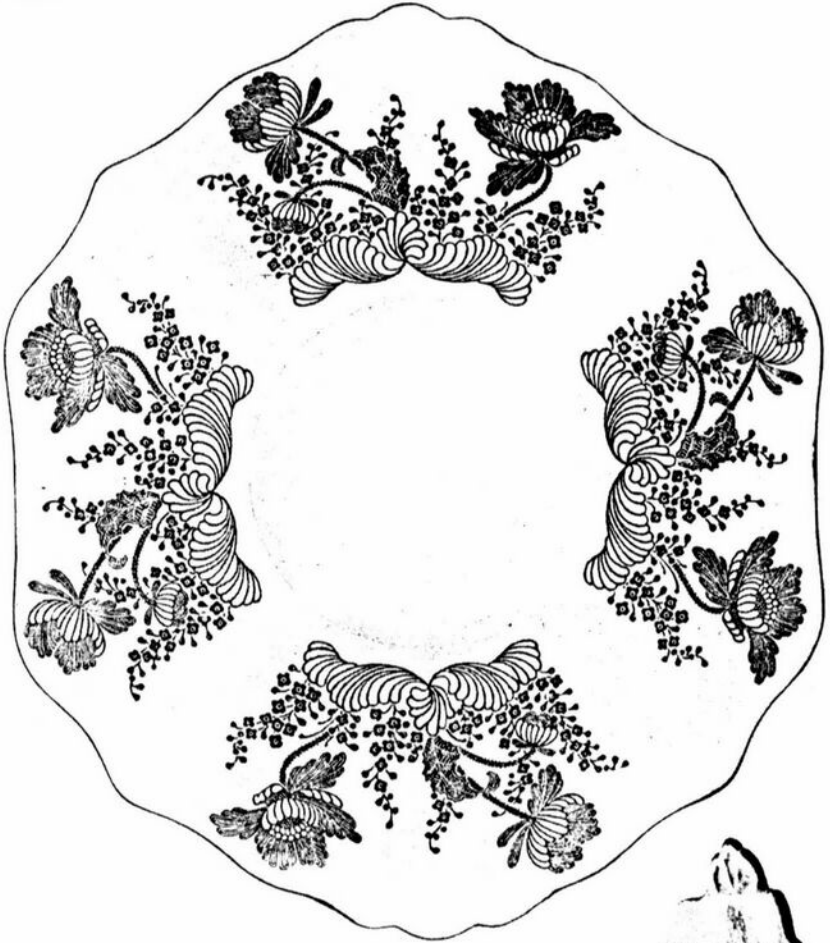
3400/16-6 oz. Ftd. Sugar and Cream



3400/56-5½" Fruit Saucer



3400/60-6" Bread and Butter Plate



3400/8-11½" Two Hdl. Sandwich Plate



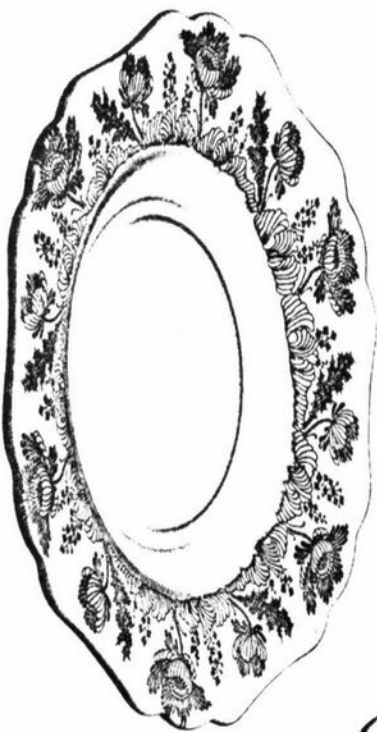
3400/59-9" Pickle Tray



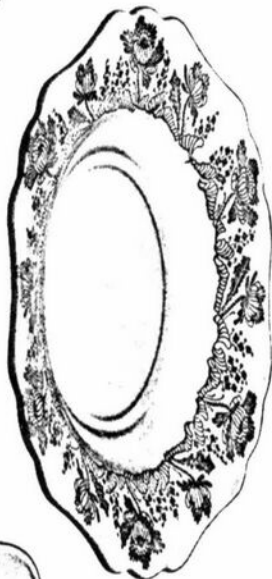
3400/67-11½" Platter



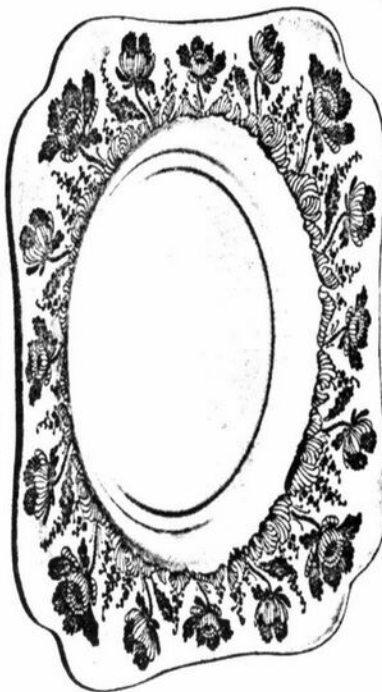
3400 Dinnerware Plate Etched 746 "Gloria"



3400/63-9 1/2" Dinner Plate



3400/61-7 1/2" Tea Plate



3400/1177 Dinner Plate



3400/1188-11" Fruit Bowl



3400/22-10" Salad Plate



3400/21-9" Salad Bowl



DEBBIE SNYDER Snyder Antiques

P.O. Box 010, Gates Mills, Ohio 44040
Phone (216) 461-2110 (after 6 PM please)

FLOWER FROGS:

8½" Draped Lady, Crystal Satin	\$100.00
8½" Draped Lady, Crystal, No. 2 Base	75.00
8½" Draped Lady, Crystal, No. 3 Base	70.00
8½" Draped Lady, Dianthus Pink	100.00
8½" Draped Lady, Amber	190.00
8½" Draped Lady, Mandarin Gold	225.00
8½" Draped Lady, Emerald Green	95.00
11" Bashful Charlotte, Crystal	175.00
13" Draped Lady, Crystal	125.00
13" Draped Lady, Emerald Green (Base Damaged)	165.00
Lady w/Roses, Emerald Green	250.00
Lady w/Roses, Dianthus Pink	250.00
½" Draped Lady, Oval Base, Dianthus Pink	235.00
Two Kid, Dianthus, w/etched flip bowl	240.00
Ritz Blue, Two Bun Geisha	850.00
Peach Blo, One Bun Geisha on attractive metal lamp base	550.00

3011 NUDES:

Amethyst Cocktail	70.00
Mandarin Cocktail	70.00
Crystal Cocktail, ebony foot & stem	85.00
Honey Mocha Cocktail	100.00
Amethyst Ivy Ball	145.00
Crown Tuscan Seashell comport, gold Deco/enameled flowers	120.00

BLUE CAPRICE:

6-6½" Plates	15.00
6-7½" Plates	16.00
6-8½" Plates	21.00
1-No. 152 2 handled lemon	18.00
1-No. 32 11" plate	45.00
1-Cup & Saucer	35.00
2-Mdm. Sugar & Cream	42.50
No. 62 Belled Bowl	50.00
No. 65 Console Bowl	42.50
No. 61 Crimped Bowl	55.00
3-9 oz. No. 300 Waters	29.00
No. 82 Salad Bowl	48.00

CRYSTAL CAPRICE:

No. 165 Covered Candy Dish	30.00
No. 74 three light candlestick w/prisms	40.00
No. 65 Alpine Console Bowl	38.00
3-No. 300 Tumblers	17.50

FARBER:

No. 3400 Forest Green Squat pitcher	42.00
No. 3400/156 Amber Decanter	35.00
No. 3400/119 Amethyst 12 oz. decanter & 4 glasses	50.00
No. 3400/119 12 oz. Cobalt decanter & 4 glasses	65.00
No. 1325 30 oz. Amethyst Decanter	50.00
Nude Figure Amber Comport	32.00

DECAGON HUNT SCENE, WILLOW BLUE:

Center Handled Sandwich tray	75.00
2 pc. Mayo set	62.50
Flip Bowl	47.50

ROSEPOINT:

12 - No. 3121 Ice Teas	25.00
4 - No. 3121 1 oz. cordials	57.50
1 - No. 3500 1 oz. cordials	57.50
4 - No. 3121 5 oz. juice	35.00
2 - No. 3121 2½ oz. wines	55.00
1 - No. 3121 9 oz. waters	25.00
1 - No. 3121 10 oz. goblets	23.00
4 - No. 498 tumblers on No. 3500/91 square tray	225.00
2 - No. 3400 Cups & Saucers	35.00
76 oz. Doulton Jug	245.00
2 - No. 3400 9½" Plates	45.00
4 - No. 3900 6½" Plates	12.50
11 - No. 3500 6½" Plates	12.50
8 - No. 3500 8½" Plates	13.00
No. 3500/28 12" bowl	45.00
No. 3400 9" oval relish	57.50
No. 3400/67 relish	75.00
Pr. No. 1338 Candlesticks	105.00
No. 274 Bud Vase	38.00
No. 6004 6" Bud Vase	35.00
No. 151 Pristine Mustard	70.00

MISCELLANEOUS:

No. 3400 Doulton Pitcher, Emerald Green, & 6-13 oz. barrel tumblers	100.00 set
80 oz. Moonlight blue Gyro Optic jug & 6-13 oz. barrel tumblers	100.00 set
3" Mandarin Gold swan	42.00
3" Peachblo swan	30.00
3" Light Emerald (Apple Green) swan	37.50
3" Dianthus Pink swan	35.00
3" Ebony signed swan	72.50
3" Milk Glass Swan	59.00
3" Carmen swan (chipped wing)	42.00

WILDFLOWER:

6 - No. 3121 Cocktails	27.50
5 - No. 3121 5 oz. juice	28.00
2 - No. 3121 1 oz. cordials	55.00
4 - 3121 Tall Sherbets	19.00
No. 3400/9 Covered Candy	115.00
Covered candy w/red rose knob	105.00
No. 3400 Low Fluted Bowl	40.00

Each piece priced individually, and perfect unless otherwise noted. Always carrying a large assortment of Cambridge Glass, please send wants.

EVELYN M. ALLEN

135 Cynthia Street
Heath, Ohio 43055
(614) 522-1635

Cambridge Rosepoint:

1. 13	No. 3121 10 oz. water goblets	\$28.00 each
2. 6	No. 3121 12 oz. ice teas	28.00 each
3. 8	No. 3121 10 oz. ice teas	25.00 each
4. 14	No. 3121 3 oz. cocktails	30.00 each
5. 2	No. 3121 6 oz. low sherbets	24.00 each
6. 8	No. 3500 6 oz. low sherbets	24.00 each
7. 1	No. 3400 cream and sugar	55.00 set
8. 1	No. 3500 cream and sugar	55.00 set
9. 1	No. 3500 individual cream and sugar	45.00 set
10. 1	No. 1299 11" vase	125.00
11. 1	No. 3400/1186 12½" platter	70.00
12. 1	No. 3400/1181 6" platter	22.00
13. 1	No. 3900/120 5 part relish	75.00
14. 1	No. 3400/52 butter dish and cover	135.00
15. 1	No. 3500/139 honey dish and cover	175.00
16. 1	No. 300 6" candy dish and cover with red rose	200.00

Cambridge Wildflower:

17. 5	No. 3121 12 oz. ice teas	20.00 each
18. 3	No. 3121 3 oz. cocktails	25.00 each

Cambridge Crystal Caprice:

19. 8	9½" dinner plates	22.00 each
20. 8	8½" plates	9.00 each
21. 8	cups and saucers	13.00 set
22. 7	No. 300 goblets	14.00 each
23. 6	No. 300 wines	20.00 each
24. 8	No. 95 2" 4 ftd. almond	12.50 each
25. 4	No. 32 ashtrays and No. 36 cigarette box and cover	40.00 set

Cambridge Blue Caprice:

26. 2	No. 300 goblets	28.00 each
27. 3	No. 300 tall champagnes	25.00 each
28. 8	No. 34 3" 3 toed ashtrays	7.00 each
29. 1	No. 36 cigarette box and cover	25.00

Cambridge Miscellaneous:

30.	Carmen top crystal nude banquet goblet	130.00
31.	Crystal optic bowl, frosted nude banquet goblet	125.00
32.	No. 3011 Carmen top, crystal nude comport	145.00
33.	No. 3011 Dk. green top, crystal nude comport	135.00
34. 2	Amber willow dinner plates	45.00 each
35.	No. 509 Pink two-kid flower figure	175.00
36.	No. 518 Mandarin gold flower figure	250.00
37.	No. 1115 Crystal draped lady flower figure	115.00

Postage And Insurance Extra. All Items In Mint Condition.

<p>HOUSE OF QUALITY ANTIQUES and COLLECTABLES <i>Specializing in Glass</i> 128 E. Elm St. Don & Jane Rogers O'Fallon, MO Home 314-272-6854 1-327-8819</p>	<p>BROWN & BROWN APPRAISALS <i>Glass - China - Pottery</i> 1944 Sioux Place Kent, Ohio 44240 Flat Rates, N & E Ohio Only</p>	<p>CHARLES MIKULIK Box 416 Elizabeth, N.J. 07207 — COLLECTOR — Always paying good prices for CAMBRIDGE CAPRICE in all colors 201-688-1144 CARRY MOST TYPES OF ANTIQUES</p>
<p>EVELYN M. ALLEN 135 Cynthia Street Heath, Ohio 43055 Mail Order & Shows 614-522-1635 SPECIALIZING IN CAMBRIDGE GLASS!</p>	<p>BENICIA ANTIQUE SHOP 305 First Street Benicia, California 94510 OPEN 11 AM - 5 PM Closed Monday Z. E. LOPES 707-745-0978</p>	<p>ROUND HOUSE BOOKS We carry more than 1000 current titles on Antique and Collectibles For More Information, Write Box 302-C, Mt. Vernon, Ohio 43050</p>
<p>DAVID NIELSEN 109 Lincolnway LaPorte, Indiana 219-326-7276 CAMBRIDGE - HEISEY - GENERAL LINE</p>	<p>VISIT HISTORIC BENICIA and its 28 shops Off Interstate #80 North of San Francisco</p>	
<p>BERKELEY ANTIQUES 69 Berkeley St. Boston, MA 02116 George or Frank 617-426-1048 CAMBRIDGE, HEISEY, GENERAL LINE</p>	<p>ANDREJCAK'S ANTIQUES 14533 Bayes Ave. Lakewood, Ohio 44107 Joe & Karen Andrejcek 216-226-3417 SHOWS ONLY — CAMBRIDGE — FENTON — CHINA</p>	<p>A. SPRINGBORN 5434 Windridge Lane Orlando, Florida 32810 SHOP No. 34 — WEBSTER, FL Open Every Monday 305/298-3011</p>
<p>D & D ANTIQUES Columbus, Ohio DICK SLIFKO SHOWS ONLY</p>	<p>THE HITCHING POST 7467 S. R. 88 Ravenna, OH 44266 Ph. 216-296-3686 D. McDaniel CAMBRIDGE — HEISEY — GENERAL LINE</p>	<p>FINDER'S KEEPER'S ANTIQUES P.O. Box 303 P.O. Box 16023 Dayton, O. Columbus, O. 45401 43216 513-254-2937 614-885-2726 SPECIALIZING IN CAMBRIDGE GLASS!</p>
<p>THE GLASS CUPBOARD 39 Shire Oaks Drive Pittsford, New York 14534 Marcia Ellis 716-586-7596 CAMBRIDGE ONLY INQUIRIES INVITED</p>	<p>GEORGE HOFFMAN ANTIQUES 129 South 4th Street Newark, Ohio 43055 614-345-8021</p>	<p>SNYDER ANTIQUES P.O. Box 010 Gates Mills, Ohio 44040 SPECIALIZING IN CAMBRIDGE GLASS Mail Order, Shows 216-461-2110 By Appointment</p>
<p>KILPATRICK'S ANTIQUES Lu & Dort 400 W. 6th St., Bloomington, IN 47401 Res. 812/332-8754 Shop 812/339-1120 We buy one piece or collections</p>	<p>J & L GLASS Laws Antique Center, Manassas, VA 22111 and 10629 Main St. Fairfax, VA 22030 703/273-8579 BUY & SELL: Depression, Cambridge, Heisey, Duncan & Fostoria Glass</p>	<p>1886 HOUSE East Schodack, N.Y. 12063 MAIL and SHOWS Laurie Cruise 518-477-5895 CAMBRIDGE - NORITAKE - AZALEA - D.G.</p>
<p>joyce's antiques Bought and Sold Specializing in HEISEY • CAMBRIDGE • VERLYS • AMERICAN GLASS P O Box 114, Albertson, N Y 11507 (516) 499-3396</p>	<p>ROLLING ACRES ANTIQUES 66484 N. 8th Street Road Cambridge, Ohio 43725 Sandy Jenkins & Anne Ingram 614-432-2570 CAMBRIDGE & GENERAL LINE ANTIQUES</p>	<p>BILL & SHARON PHILLIPS 21730 Friday Euclid, Ohio 44123 Ph. 216-261-4665 Shows Only BUYING GLASS, ANTIQUES, ETC.</p>
<p>CHARLES A. SHAW P.O. Box 147 Church St. New York, NY 10008-147 Phone (914) 476-6590 AMERICAN GLASS SHOWS & MAIL ORDER</p>	<p>AL STEELE Westerville, Ohio 614-882-6483 or 614-882-7124 Mail Orders and Shows Only HEISEY — CAMBRIDGE — PATTERN GLASS</p>	<p>SWISS HILLS COLLECTIBLES 303 Guilford Ave., Woodsfield, OH 43793 Mary & Wilbur Henderson 614/472-1133 SPECIALIZING IN CAMBRIDGE GLASS Shows, Mail & Stagecoach Antique Mall</p>
<p>MARGARET LANE ANTIQUES 2 E. Main St., New Concord, OH 43762 Lynn Welker 614/826-4418 CAMBRIDGE GLASS MATCHING SERVICE Hours Mon.-Fri. 1-5 PM or by Appointment</p>	<p>SHIRLEY S. LADOUCEUR Antiques and Collectibles Specializing in Cambridge Glass BY APPOINTMENT 7597 Daphne Drive 315-458-5297 No. Syracuse, NY 13212</p>	<p>GREEN ACRES FARM Antiques, Crystal Glass & Collectibles Sat. & Sun. 1-7 PM (614) 927-1882 2678 Hazelton Etna Road (State Route 310 North) Pataskala, Ohio 43062</p>



National Cambridge Collectors, Inc.

P. O. Box 416, Cambridge, Ohio 43725

A nonprofit organization dedicated to the preservation and study of Cambridge Glass

The National Cambridge Collectors, Inc. is proud to present an original film produced by the Cambridge Glass Co. in the 1950's. The film is entitled **THE CRYSTAL LADY**. It is a most interesting film and includes pictures of the factory and the workers making the fine Cambridge Glass. It is a 16mm sound movie that runs about 40 minutes.

The following 5 slide presentations are now available:

- No. 1 is on the Display rooms and close-up shots of particular pieces of interest.
- No. 2 is of different stems made by Cambridge Glass Co.
- No. 3 covers Cambridge Glass candlesticks.
- No. 4 is of Cambridge colors.
- No. 5 presents Cambridge Glass figurals.

These 5 presentations are available in Kodak carousel slide trays and are supplied with narratives on each slide.

NOTE: NCC Study Clubs may use these presentations free of charge except for postage to and from destination.

TO RESERVE PLEASE CHECK THE ITEM (OR ITEMS) DESIRED.

MAKE CHECK PAYABLE TO: NATIONAL CAMBRIDGE COLLECTORS, INC.

THE CRYSTAL LADY and all 5 slide presentations have a deposit fee of \$25 and a rental fee of \$15 which will be deducted from the deposit fee.

THE CRYSTAL LADY

- _____ No. 1 Display rooms and particular pieces
- _____ No. 2 Stems
- _____ No. 3 Candlesticks
- _____ No. 4 Colors
- _____ No. 5 Figurals

TOTAL DEPOSIT FEE: _____

NAME OF ORGANIZATION: _____

ADDRESS: _____

CITY & STATE: _____ ZIP _____

DATE NEEDED: _____

QUARTERLY MEETING NOTICE

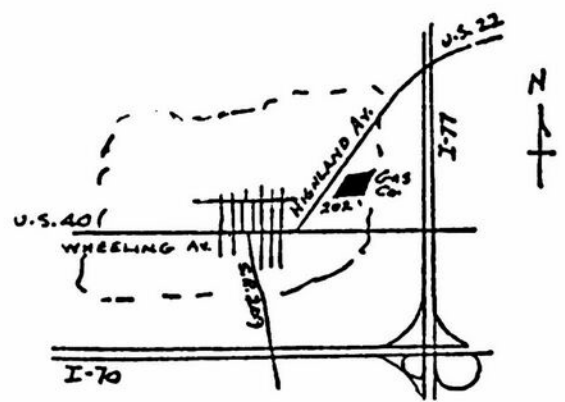
**SUNDAY, AUGUST 15th
1:00 P.M.**

The Columbia Gas of Ohio Company
202 Highland Avenue
Cambridge, Ohio

An interesting Program is being planned for your enjoyment.

There will also be a "Show & Tell" session!
(Bring your Questionable Items.)

PARKING IN REAR! USE BACK ENTRANCE!



National Cambridge Collectors, Inc.

P. O. Box 416
Cambridge, Ohio 43725

