

# Cambridge



# Crystal Ball

ISSUE NO. 119

MARCH 1983

Published monthly by the NATIONAL CAMBRIDGE COLLECTORS, Inc.  
To encourage and to report the discovery of the elegant and boundless product  
of the Cambridge Glass Company, Cambridge, Ohio

## THOUGHTS from your President . . .

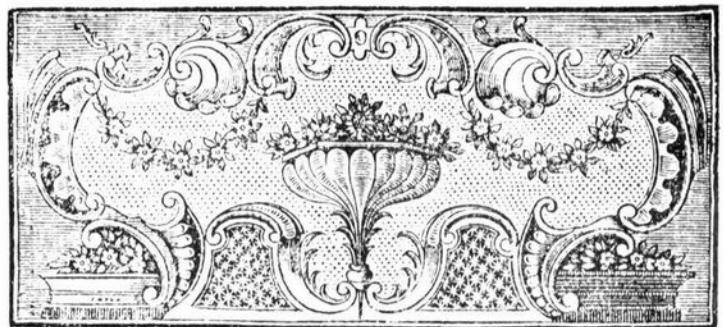
I hope all of you enjoyed the Quarterly Meeting and Auction last weekend at Shenandoah Inn. A lot of people, no doubt, went home happy because they were able to purchase the piece of Cambridge they had been wanting for so long. Also, I suppose a good many people were doing a little second guessing as to whether just one more bid would have put that piece of Cambridge in their collection. For those of you in the latter predicament, be sure to make plans to attend the Convention and show where you will probably be able to purchase another just like the one you let slip through your fingers. (While you were at the Auction, did you remember to make your motel reservations for the Convention?)

We delayed the MUSEUM opening until March 1st as you probably know by now. With the high cost of heating the MUSEUM and with other inherent costs, we felt it best not to open in February when would-be visitors would probably stay home due to weather conditions. We are now open. Come visit us and enjoy the fruits of labor of members of NCC. For those of you who haven't had the chance to see the MUSEUM because you live so far away, you could kill two birds with one stone by combining a visit to the MUSEUM along with a visit to the Convention in June. Make plans for it.

We will need lots of help for Convention this year. What we need are persons or groups to handle the centerpiece arrangements for the banquet, greeters at the door for the banquet, someone to plan a special party for the Friday night get acquainted session

(it's our tenth anniversary), someone to take care of registration, someone to handle book sales and project sales, and as always many people to spend a few hours during the weekend helping out at ticket sales for the show and various other duties. As it stands now we will not have a display room this year "per se." We have the MUSEUM, and what better display would anyone want to see? If, however, any of the Study Groups, or anyone else for that matter, would like to create a display of any kind, we will be more than happy to reserve the room and absorb any costs related to it. We will furnish the tables and risers, and maybe someone would like to do an eight place table setting of Rosepoint, Caprice or any other etching or pattern. Think about it and get involved. You'll find that you enjoy helping and being a part of everything. If you have any questions as to what the before mentioned tasks consist of or if you are interested in helping in any way, contact Jo Barstow through the NCC address.

Willard



## MUSEUM RE-OPENING MARCH 1st

Telephone Number

614-432-4245

### MEMBERSHIP RENEWAL NOTICE

If the date on your  
address label is - -

**3-83**

This is your **LAST ISSUE** of the **CRYSTAL BALL**.

Please renew **NOW!**

# CAMBRIDGE CRYSTAL BALL

Official publication of National Cambridge Collectors, Inc., a non-profit corporation with tax exempt status. Published once a month for the benefit of its members.

Membership is available for individual members at \$13 per year and additional members (12 years of age and residing in the same household) at \$3 each. All members have voting rights, but only one *Crystal Ball* will be mailed per household.

Back issues of the *Crystal Ball* are available (beginning with Issue No. 1, May 1973) for members only. Cost: \$.60 each or 12 issues for \$7.

## 1982-83 OFFICERS & COMMITTEE CHAIRPERSONS

PRESIDENT ..... Willard Kolb  
 VICE-PRESIDENT ..... Josephine Barstow  
 SECRETARY ..... Janice Hughes  
 TREASURER ..... William Smith  
 SERGEANT-AT-ARMS ..... Don Armbrrecht

BOOK SALES ..... Billy Harbaugh & Jo Barstow  
 BUDGET & FINANCE ..... David Rankin  
 BY-LAWS ..... David Rankin  
 CONVENTION ..... Josephine Barstow  
 MEMBERSHIP ..... Phyllis Smith  
 MUSEUM ..... Billy Harbaugh  
 PROGRAM & ENTERTAINMENT ..... Frank Wollenhaupt  
 PROJECT ..... Willard Kolb  
 PUBLIC RELATIONS ..... William Smith  
 PUBLICITY ..... Joseph Andrejcek  
 1983 AUCTION ..... Lynn Welker  
 1983 ANTIQUE SHOW ..... Joy McFadden  
 CRYSTAL BALL EDITOR ..... Peg Gotschall

## CLASSIFIED ADVERTISING RATES

5c per word ..... \$1.00 minimum  
 We cannot mix type size in classified advertisements. Abbreviations and initials will count as words. Payment in full MUST accompany all ads.

## DISPLAY ADVERTISING RATES

	Members	Non-Members
1/8 page .....	\$ 4.00	\$ 6.00
1/4 page .....	7.00	10.00
1/2 page .....	12.00	18.00
3/4 page .....	17.00	25.00
Full page .....	22.00	33.00

## DEALERS DIRECTORY

1" ad (5 line maximum) ..... \$6.00 for 6 months

Cambridge *Crystal Ball* assumes no responsibility for items advertised and will not be responsible for error in price, description or other information.

Advertising copy, articles, and club news and notices must be in our hands by the 10th of each month to assure publication in our next issue. Advertisements containing reproductions will not knowingly be accepted unless clearly stated.

Opinions or information stated in any signed article or letter printed in the *Crystal Ball* are those of the writer only and may or may not agree with National Cambridge Collectors, Inc. The editor reserves the right to refuse or edit material submitted for publication to conform to the editorial style of the *Crystal Ball*.

## PLEASE ADDRESS ALL CORRESPONDENCE TO

Cambridge Crystal Ball  
 National Cambridge Collectors, Inc.  
 P.O. Box 416  
 Cambridge, Ohio 43725

Janice Hughes, Secretary Phone 614-432-7823  
 Willard Kolb, President Phone 614-695-0695

PLEASE NOTIFY US IMMEDIATELY OF ANY CHANGE IN YOUR ADDRESS

Please enclose a self-addressed stamped envelope when requesting information!!

# Study Club News

## STUDY GROUP No. 5 - SOUTHERN CALIFORNIA "CALIFORNIA CAMBRIDGE COLLECTORS"

Instead of a meeting in December we had our annual dinner and gift exchange. Beverley Hanson was gracious enough to invite the club members and their spouses to her lovely new home on the lake at Lake Forest. Beverley cooked prime rib to perfection and the rest of us brought the accompaniments. Bill Losch provided some delicious champagne and everything turned out perfect. We even watched the boat parade from Beverley's patio. The boats were decorated with Christmas lights and decorations and it was a beautiful clear night.

The January meeting was a different story, however. It was the week of the big storms here in California and one of the biggest was forecast for the night of our meeting. Neither wind, nor rain, nor rising tide could discourage some of the members from attending the meeting at Bill and Betty Losch's in Long Beach. We had a short business discussion and then got right down to viewing the Color Book slides from NCC. Mother Nature had different plans, however, because before we were half through the power went out, thus sending the attendees home early in a driving rain. So we weren't able to finish the price lists. It was tough to decide on prices for most of the Cambridge Glass shown in the slides as there was much we had never seen before. But there were also some familiar pieces that we have in our collections. So anyway, we did the best we could. The treasures shown in the slides were beautiful and we can't wait to purchase the Color Book.

We did take a break and had Show and Tell before everything went dark. Betty Wanser shared some bargains which included a 3 piece 3450 Nautilus amber salt and pepper with crystal tray. She also had some moonlight blue items which included a ladle, 25 pieces of blue caprice blown stemware and a creamer and sugar.

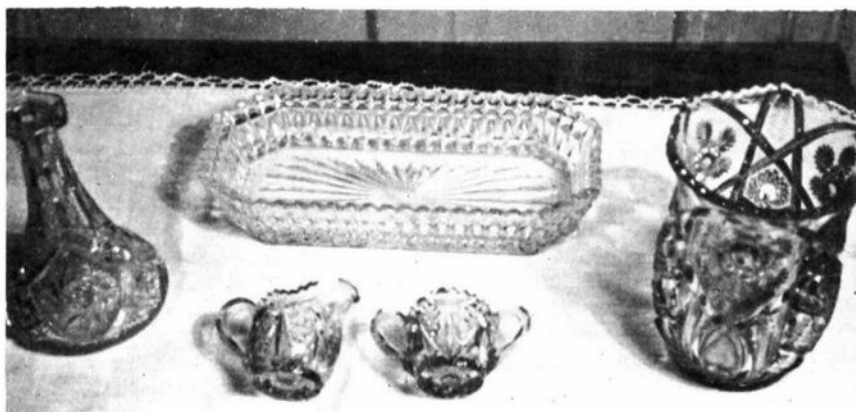
Ron was the champ again this month with the best buy. He found an epergne with 2 arms (triple) with bobèche and prisms and the blue jay perched on top for \$20.00! Also, among Ron's finds was an amber puff box, a pair of cobalt and crystal 3400 salt and pepper shakers, Rosepoint gold encrusted cigarette holder, Rosepoint martini shaker and Rosepoint pressed base cordials with Rosepoint etched tops.

Betty Losch shared a rubina muddler, Apple Blossom mandarin gold vase with gold filigree holder and a gorgeous pair of nude stem candleholders with amethyst tops. Also, among her finds was an Apple Blossom mayonnaise with ladle in mandarin gold, Corinth crystal ice bucket and tongs and a crystal Ramshead covered candy box with Valencia etching.

I shared my Christmas gifts which included a pair of mocha Gyro Optic 12 inch vases with crystal keyhole bases and a Mt. Vernon royal blue comport. Another great Cambridge gift that I received, but didn't bring along, was an epergne with prisms and Diane etching. I'm glad now that I didn't bring it because Ron would have overshadowed it with his great find anyway.

Luckily, we were also able to enjoy some delicious refreshments before the power failure. Our next meeting will be held at Herb and Betty Wanser's home in February.

## SELDOM SEEN NEAR CUT PIECES



Left to Right clockwise: Buzz Saw cologne (stopper missing), Lexington celery tray, Fernland celery vase, and child's handled spooner and creamer marked Near Cut and named "Sweetheart" by books and collectors of children's glass dishes.

**HAVE  
YOU**   
**OBTAINED A  
NEW MEMBER?**



### STUDY CLUB NEWS - Continued from page 3

#### STUDY GROUP No. 7 - EASTERN OHIO "THE CAMBRIDGE BUFFS"

Cambridge Buffs met January 12th at the home of Karen and Larry Jones.

Thirty pieces of colored glass etched with different patterns were on display. The etchings were: Apple Blossom, Chantilly, Portia, Blue Willow, Adams, Gloria, Wildflower, Cleo, Grape and several patterns with numbers only.

Show and Tell items were: Ritz blue Georgian tumbler, green candlestick, Milk Glass Mt. Vernon cordial, Tally-Ho carmen cordial, Everglades sherbet, Marlene brandy, Chantilly barrel tumbler, amethyst nut dish, Martha Washington carmen cocktail.

The next meeting will be with Roy and Doris Isaacs on February 11th.

submitted by Deanne Gray

#### STUDY GROUP No. 6 - NEW YORK STATE "THE FINGERLAKES"

On Sunday, February 6th, the Fingerlakes Study Group met at the home of Don and Shirley Ladouceur. Our business meeting and project was postponed. Our group had the opportunity to view the 60 slides which will make up the NCC Color Book and to price each item. It was a busy 5 hours, with little conversation to complete the entire project. Everyone is now anxiously awaiting the NCC first Color Book. Show and Tell consisted of: Inverted Strawberry toothpick (not Cambridge), a Chantilly cocktail shaker, a 3500 Rosepoint divided, single handled relish, a crystal Nude Stem with amethyst bowl claret and an ebony Nude Stem with crystal bowl cocktail. Our next meeting will be on April 17th in Rome, N.Y. to pick up our postponed project on cruets and stems.

submitted by Shirley Ladouceur

#### STUDY GROUP No. 10 - LONG ISLAND, NY "THE TUSCAN CROWNS"

Tuscan Crowns met January 13th at the Serzanin home in Brentwood, Long Island. The entire meeting was devoted to viewing the NCC color slides and pricing the items for the new book. However, as Rick Serzanin remarked: "We are speechless as well as price-less". Without a doubt the items pictured in the slides were beautiful and the book will be a must, BUT, it was almost an impossibility to view that many slides in one meeting and price them accurately. In fact, the majority of the items were so rare (at least to us) that pricing them would have been silly. How do you price something that you have never seen? Our intentions were good but our abilities are lacking. We hope that other study groups have better luck.

submitted by Barbara Siemsen

#### STUDY GROUP No. 8 - SOUTHERN MICHIGAN "THE MICHIGAN CAPRICES"

Friday, January 21st, the Michigan Caprices met at the home of Frank and Phyllis Hayes. Guests visiting were Martin Coppo of Flint and Doris and John Blunt of Metamora.

For Show and Tell, Lee Goppo had a beautiful crystal 6½ inch marked swan. What a great Christmas present, Martin! Clara and Ray Brown had a lovely pink Rose Lady to show along with two very nice carmen 3 inch marked swans; they had an unusual amber effect in the neck and head. Frank had a little gem to show, a 2 oz. amethyst Georgian marked tumbler.

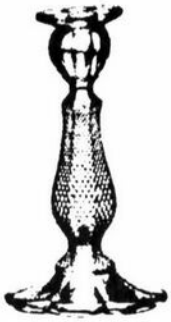
For our meeting, a large display of the Hayes' and other members' candlesticks was present. Betty Dasen had a beautiful Rosepoint 3900/67 candlestick she hopes to find a mate to some day. We studied some illustrated pages made up of Cambridge candleholders. They did not include all the candleholders produced, but a fair variety. Our Study Group now have four pages of a Handy Dandy Shopping List for comparison when they go looking for Cambridge Glass.

The meeting was concluded with dessert and coffee. The Brown's will be going to the Auction in February. We had some discussion on some of the items listed in the Auction. We also still get confused over the Cambridge pinks. Has the Convention Committee ever considered having a display of pinks?

submitted by Phyllis Hayes



Mount Vernon



35-8"



130-4"



38-13 1/2"



3400/1338

Caprice-base Candelabra

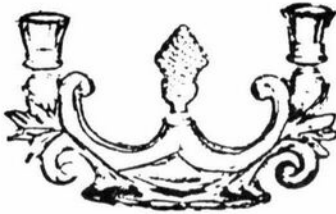


110-5"



127 2-10 1/2"

Caprice



1355



1457-6 1/2" Plain

3500/108  
2 1/2"



Caprice



1338-6"



1357



Caprice 70-7"



Caprice 69-7 1/2"



Caprice 74



1715  
Ash Tray  
upside down  
& candelstick



No 1-2 1/2"  
No 2-4"  
No 3-5"



Cupid Candelstick S 121  
#67 Cambria  
Squash Sonata



3900/72

Same style with - Occup



1041/1050



1307 5"



3011-9"



3900/74



1583 Pergrette  
Crimped top Vase



1574 Large Cornucopia 13 1/2" long  
1554 Small Cornucopia 11 1/2" long



Arcadia  
73



1209 5"  
Everglades 2



Everglades 10-4 1/2"



1211 Candelabra  
Everglades 3



Everglades 62-3 1/2"



1191



Virginia 499-7 1/2"



Virginian 501-6"



1155



Virginia 493-2 1/2"



Virginian 502-5 1/2"



Virginian  
498



1611 6"



498-7"



488 4"

Pristine



506 3 1/2"



500 6 1/2"



499



497



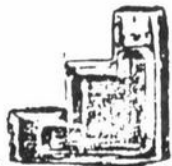
489 1 3/4"  
490 2 3/4"  
491 3 3/4"



492 1 3/4"  
493 2 3/4"  
495 3 3/4"



Pristine 503 6" Pristine 96 5"



510/1537  
Ball Candelstick



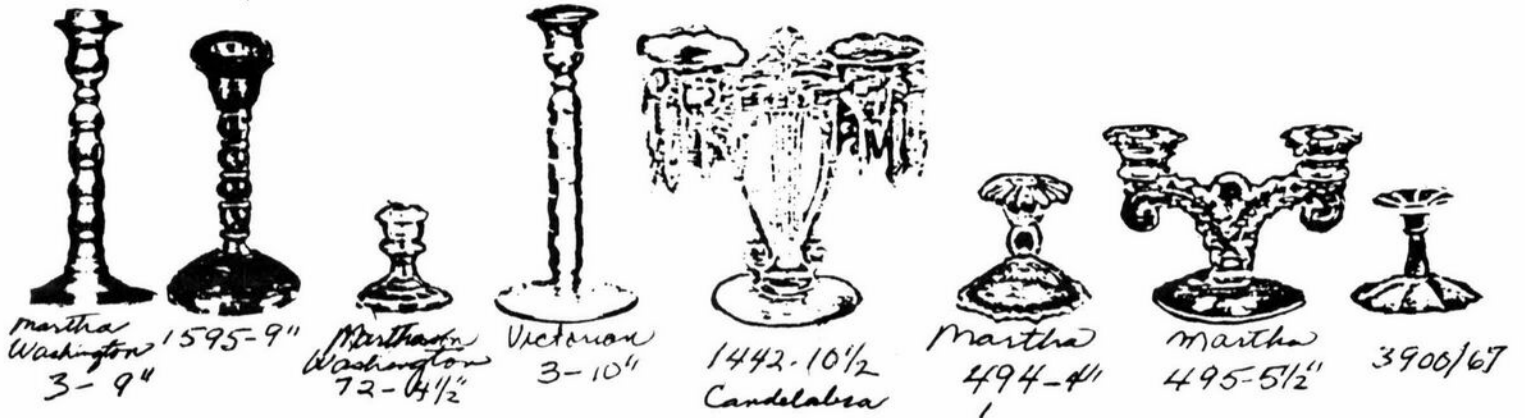
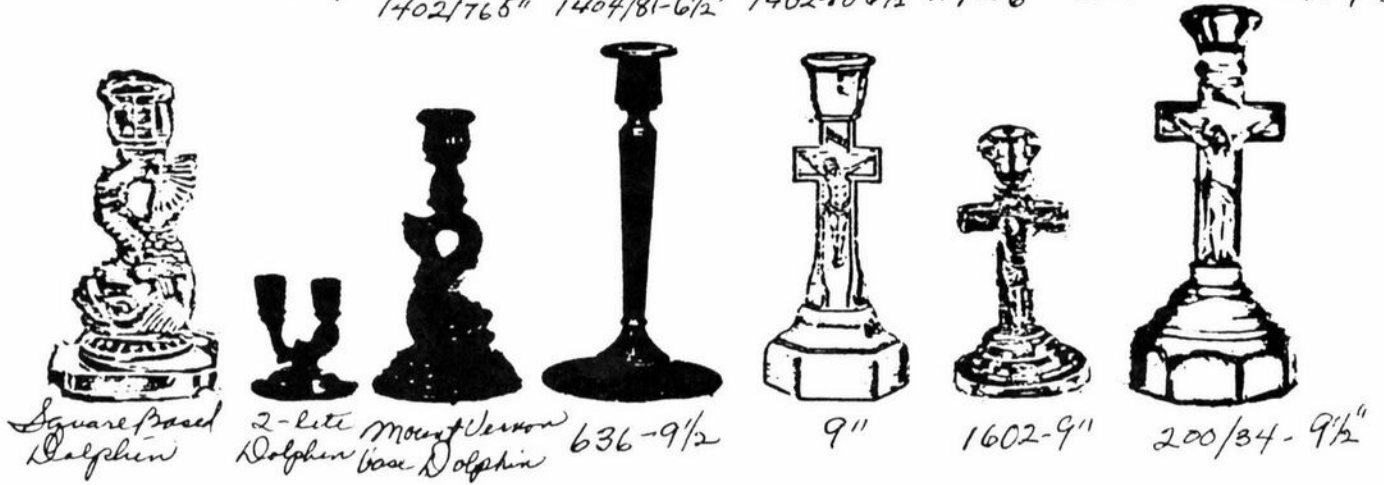
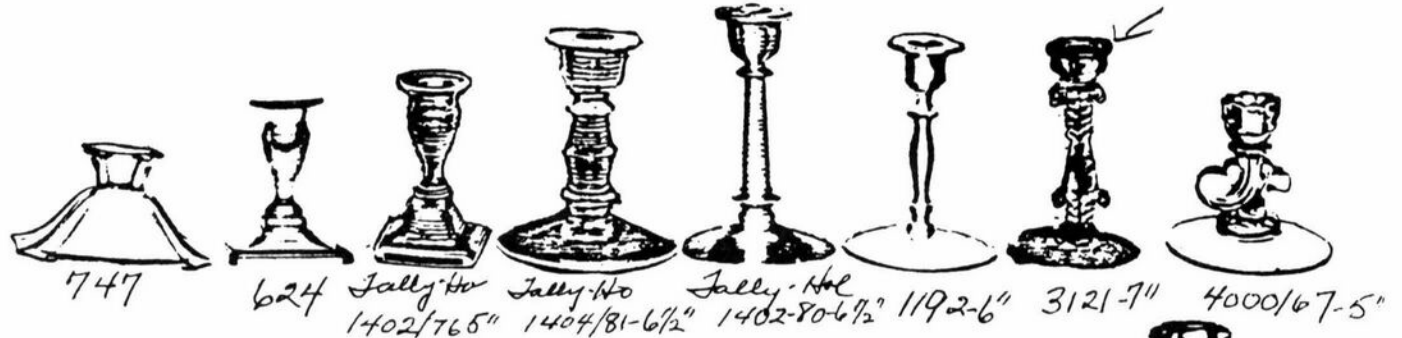
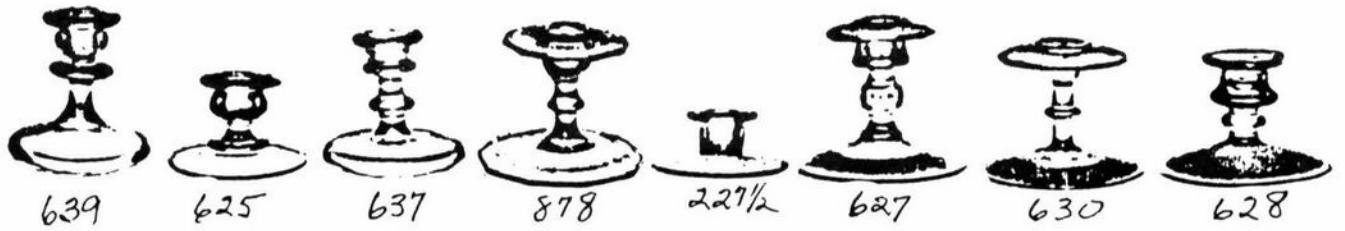
Ravis Head  
Gadroon 657-6"  
3500/94



3500/31-6"  
Gadroon



1338 Candelabrum  
Gadroon





2630



2759-5"



Caprice #13  
Reflector Candelholder



2825-5"



2818



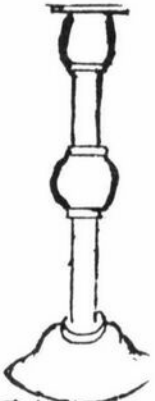
Daisy  
Arch Foot 3"  
2760



2798



2657



Drawing  
Ball stem 9 1/2"



1273-10 1/2"



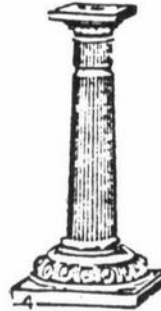
2800/111  
10"-7 1/2"



Twist  
8 1/2" 2 mold  
mark



2700/109  
8"



Doric



2700/107  
7 1/2"



2859-7"



2862  
6"-7"



2778  
8"



2991  
6"



2760



2889  
6"-7"-9"



2800/108  
9"



416 6 1/2"



2777-6"



2630-8"



2657-7"



2630-5"  
Plymouth



2750-7"  
Colonial



2809-7 1/2"



2861-7"



2630-6"



626-3 1/2"



**MISCELLANEOUS (cont'd)**

		Price Per Doz.	Price Each
3797/151	3½ in. Ash Tray	7.20	.60
Caprice 213	2¾ in. Ash Tray with Cardholder	3.00	.25
Caprice 214	4 in. Ash Tray	4.20	.35
Caprice 215	4 in. Ash Tray	6.60	.55
Caprice 216	5 in. Ash Tray	9.60	.80
Cascade 216	8 in. Ash Tray	39.00	3.25
Pristine 721	2½ in. Ash Tray, Sq.	6.00	.50
Pristine 733	3 in. Ash Tray	12.00	1.00
Pristine 734	4½ in. Ash Tray	15.00	1.25
Pristine 735	6 in. Ash Tray	30.00	2.50
Pristine 737	7 in. Ash Tray, Canoe	12.00	1.00
Caprice 207	Cig. Box & Cov., 3½x2½ in.	16.20	1.35
Pristine 728	5 pc. Ash Tray Set	42.00	3.50
Pristine 733/4/5	3 pc. Ash Tray Set	57.00	4.75
Caprice 214/215/216	3 pc. Ash Tray Set	18.00	1.50
Caprice 207/213	6 pc. Smoker Set (in Display Box)	30.00	2.50
3797/152	3 pc. Smoker Set (40/151) (in Display Box)	30.00	2.50

**SUGARS AND CREAMS**

(Prices are Per Dozen except 3 pc. Sets)

3500/15	Ind. Sugar & Cream	\$18.00	\$1.50
3797/40	Ind. Sugar & Cream	30.00	2.50
3797/41	Sugar and Cream	39.00	3.25
3797/42	3 pc. Sugar & Cream Set (Ind.)	49.80	4.15
3900/37	Sugar & Cream Tray	18.00	1.50
3900/38	3 pc. Sugar & Cream Set (Ind.)	36.00	3.00
3900/39	3 pc. Sugar & Cream Set	48.00	4.00
3900/40	Ind. Sugar and Cream	18.00	1.50
3900/41	Sugar and Cream	30.00	2.50
Caprice 37	Sugar & Cream Tray	13.20	1.10
Caprice 38	Sugar & Cream, footed	18.00	1.50
Caprice 39	Sugar & Cream Set, 3 pc.	30.00	2.50
Caprice 40	Sugar & Cream, Ind., Ftd.	16.20	1.35
*Martha 250	Sugar & Cream, Ind.	18.00	1.50
(*Also made in Mandarin Bold, Moonlight Blue, Pink, and Pistachio)			
Pristine 253	Sugar & Cream, Ind.	18.00	1.50
Pristine 254	Sugar & Cream	33.00	2.75

**SWANS**

1040	3 in. Swan	\$ 9.00	\$ .75
1041	4½ in. Swan	15.00	1.25
1042	6½ in. Swan	27.00	2.25
1043	8½ in. Swan	39.00	3.25
1044	10 in. Swan	72.00	6.00
1221	16 in. Swan	211.20	17.60

**TUMBLERS—BLOWN**

321	1½ oz. Tumbler	\$ 7.20	\$ .60
321	7 oz. O.F. Cocktail	12.00	1.00
321	9 oz. O.F. Cocktail	13.20	1.10
321	12 oz. O.F. Cocktail	19.80	1.65
496	12 oz. Tumbler	14.40	1.20
497	10 oz. Tumbler, SHAM	11.40	.95
497	12 oz. Tumbler, SHAM	13.20	1.10
497	14 oz. Tumbler, SHAM	13.20	1.10
*Ranch Line 497	16 oz. Tumbler, SHAM	13.20	1.10

\*Made in Emerald, Mandarin Gold, Amber, Amethyst, Smoke, Pink, Moonlight Blue, and Pistachio.

**MISCELLANEOUS (cont'd)**

		Per Doz. Price	Each Price
498	5 oz. Tumbler	9.00	.75
498	10 oz. Tumbler	9.60	.80
498	12 oz. Tumbler	10.80	.90
498	14 oz. Tumbler	10.80	.90
*1070	2 oz. Pinched	6.00	.50
*1341	1 oz. Tumbler	6.00	.50
*1900	1 oz. Cordial Tumbler	6.00	.50
*1901	2 oz. Wine Tumbler	6.00	.50
1902	1 oz. Tumbler	6.00	.50
*3400/92	2½ oz. Ball	6.00	.50
*Also made in Amber and Amethyst			
Caprice 310	12 oz. Tumbler	9.60	.80
Caprice 310	10 oz. Table Tumbler	9.60	.80
*3900/115	13 oz. Tumbler	10.80	.90
*3900/117	5 oz. Tumbler	9.00	.75
*Also made in Amber, Amethyst, Mandarin Gold, Emerald			
Sunset 1955	14 oz. Tumbler	15.00	1.25
Sunset 1955	6 oz. Tumbler	15.00	1.25
Sunset 1955	3 oz. Tumbler	15.00	1.25

**TUMBLERS—PRESSED**

Georgian 317	5 oz. Tumbler	\$ 6.60	\$ .55
Georgian 319	9 oz. Tumbler	7.20	.60
(Also made in Amber, Amethyst, Moonlight Blue, Mandarin Gold, Pink, Pistachio, Smoke, Emerald)			
Georgian 317	5 oz. Tumbler in Carmen (Red)	10.80	.90
Georgian 319	9 oz. Tumbled in Carmen (Red)	10.80	.90
Mt. Vernon 51	10 oz. Table	10.80	.90
Mt. Vernon 55	2 oz. Tumbler	8.40	.70
Mt. Vernon 56	5 oz. Tumbler	9.00	.75
Mt. Vernon 57	7 oz. O.F. Cocktail	10.80	.90
Mt. Vernon 58	10 oz. Tall Tumbler	10.80	.90
Mt. Vernon 59	14 oz. Tumbler	12.00	1.00
Cascade 14	12 oz. Tumbler	12.00	1.00
Cascade 15	5 oz. Tumbler	9.00	.75

**VASES**

274	10 in. Ftd. Vase	\$24.00	\$2.00
278	11 in. Ftd. Vase	66.00	5.50
1066	7 in. Ftd. Ivy Ball	36.00	3.00
1237	9 in. Ftd. Vase	39.00	3.25
1238	12 in. Ftd. Vase	66.00	5.50
1410	6 in. Rose Bowl (Not Optic)	30.00	2.50
6004	6 in. Ftd. Vase	19.80	1.65
6004	8 in. Ftd. Vase	27.00	2.25
P. 563	6 in. Sharp Crimped	36.00	3.00
P. 565	Crimped, (Ht. 5½", Width 7½")	36.00	3.00
P. 568	Crimped oblong (Ht. 6", Width 7")	36.00	3.00
P. 569	9 in. Crimped	36.00	3.00
P. 572	6 in. Vase	36.00	3.00
P. 604	8 in. Ftd. Bud Vase	30.00	2.50
3797/77	7½ in. Ftd. Vase	39.00	3.25
3797/78	9½ in. Ftd. Vase	66.00	5.50
3797/79	11 in. Ftd. Vase	99.00	8.25
3797/80	8 in. Ftd. Bud Vase	33.00	2.75
3797/91	5½ in. Vase, Belled	33.00	2.75

**MADE IN CRYSTAL AND FOLLOWING COLORS:**

(Smoke, Pink, Pistachio, Moonlight Blue, Mandarin Gold)

1517	6 in. Vase	18.00	1.50
1518	8 in. Vase	27.00	2.25
1519	10 in. Vase	36.00	3.00
1528	10 in. Vase	39.00	3.25

**MADE IN CRACKLED**

(Crystal, Smoke, Pink, Pistachio, Moonlight Blue, Mandarin Gold)

		Price Per Doz.	Price Each
1528	10 in. Vase .....	39.00	3.25
<b>MADE IN ROCK CRYSTAL ENGRAVED</b>			
1517	6 in. Vase Eng/Starlite .....	39.00	3.25
1518	8 in. Vase Eng/Starlite .....	48.00	4.00
1519	10 in. Vase Eng/Starlite .....	60.00	5.00
*1528	10 in. Vase Eng/Starlite .....	66.00	5.50
*1528	10 in. Vase Eng/Wedding Rings....	66.00	5.50
P. 580	8 in. Flip Vase Eng/Duck Cattail..	108.00	9.00

\*Also made in Pink, Pistachio, Moonlight Blue, and Mandarin Gold)

**MADE IN ETCHED**

(Crystal, Pink, Pistachio, Moonlight Blue, Mandarin Gold)

1528	10 in. Vase E/Lace .....	66.00	5.50
1528	10 in. Vase E/Lion .....	66.00	5.50
1528	10 in. Vase E/Today .....	66.00	5.50
<b>MADE IN GOLD DECORATED in Smoke only</b>			
1528	10 in. Vase D/Star .....	66.00	5.50
1519	10 in. Vase D/Moon .....	66.00	5.50

**MISCELLANEOUS ITEMS**

319C	Candy Box & Cover .....	\$14.40	\$1.20
(Made in Crystal, M. Blue, M. Gold, Pink, Smoke, Pistachio)			
319C	Candy Box & Cover		
	Carmen (Red) .....	24.00	2.00
319B2	Handle Basket, Oblong .....	14.40	1.20
319B3	Handle Basket, Crimped .....	14.40	1.20
317S	5 oz. Georgian Sherbet .....	6.60	.55
(All above items made in Amber, Amethyst, M. Blue, M. Gold, Pink, Pistachio, Smoke, Emerald and Crystal)			
317S	5 oz. Georgian Sherbet		
	Carmen (Red) .....	10.80	.90
319B2	Handle Basket, Oblong		
	Carmen (Red) .....	19.80	1.65
*496	12 oz. Tall Joe .....	15.00	1.25
*496	1 oz. Little Joe .....	7.20	.60
*496	8 pc. Tall Joe Set		
	(2 each A-Ame-E-Mg) .....	set	10.00
*496	8 pc. Little Joe Set		
	(2 each A-Ame-E-MG) .....	set	4.80
*3011	3 oz. Cocktail (Colored Bowl with Crystal Stem and Foot) .....	27.00	2.25
*3011	1 oz. Cordial (Colored Bowl with Crystal Stem and Foot) .....	27.00	2.25
*3011	8 pc. Varitone Cocktail Set		
	(2 each A-Ame-E-Mg) .....	set	18.00
*3011	8 pc. Varitone Cordial Set		
	(2 each Am-Ame-E-Mg) .....	set	18.00
7966	2 oz. Sherry (Amber and Amethyst only) .....	19.80	1.65

\*Made in Amber, Amethyst, Emerald and Mandarin Gold)

**CRACKLED WARE**

		Price Per Doz.	Price Each
*1955	14 oz. Tumbler .....	\$13.20	\$1.10
*1955	6 oz. Tumbler .....	13.20	1.10
*1955	3 oz. Tumbler .....	12.00	1.00
*1955	10 oz. Tumbler .....	13.20	1.10
*1955	1½ oz. Tumbler .....	12.00	1.00
1070	36 oz. Pinch Decanter (Pink only)	48.00	4.00
*321	1½ oz. Tumbler .....	7.20	.60
*321	9 oz. Old Fashioned .....	13.20	1.10
*321	12 oz. Old Fashioned .....	21.00	1.75
*497	12 oz. Hi Ball .....	13.20	1.10
*497	14 oz. Hi Ball .....	13.20	1.10

\*Made in Pink, Moonlight Blue, Pistachio and Mandarin Gold

**LADY FIGURE LINE**

(Made in Smoke, Pink, Mandarin Gold, Moonlight Blue, Pistachio)  
(Crystal stem and foot, colored bowl)

3011/2	Goblet .....	\$27.00	\$2.25
3011/3	Sherbet (Saucer Champagne) .....	27.00	2.25
3011/9	Cocktail .....	27.00	2.25
3011/25	Ivy Ball .....	42.00	3.50
3011	Comport .....	30.00	2.50
3011	Ash Tray .....	21.00	1.75

**Made in Cracked**

(Smoke, Pink, Mandarin Gold, Moonlight Blue, Pistachio)  
(Bowl only is Cracked)

3011/2	Goblet .....	30.00	2.50
3011/3	Sherbet (Saucer Champagne) .....	30.00	2.50
3011/9	Cocktail .....	30.00	2.50

**Made in Carmen (Red)**

(Bowl only, stem and foot crystal)

3011/2	Goblet .....	30.00	2.50
3011/3	Sherbet (Saucer Champagne) .....	30.00	2.50
3011/9	Cocktail .....	30.00	2.50
3011/25	Ivy Ball .....	48.00	4.00
3011	Comport .....	36.00	3.00
3011	Ash Tray .....	27.00	2.25

**1956 LINE**

Made in Crystal, Pink, Smoke, Pistachio  
Mandarin Gold and Moonlight Blue

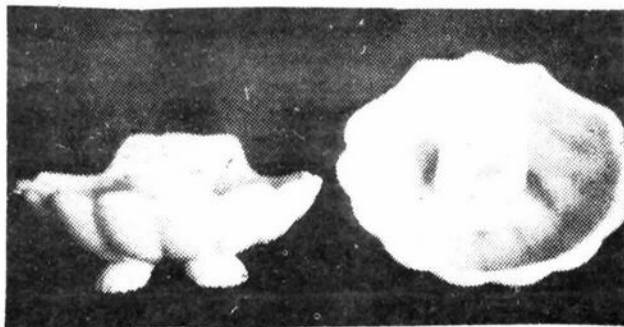
1956/1	10 in. Ash Tray (cut top only).....	\$48.00	\$4.00
1956/1	10 in. Ash Tray (Plain) .....	36.00	3.00
1956/5	8 in. Ash Tray (cut top only).....	36.00	3.00
1956/5	8 in. Ash Tray (Plain) .....	24.00	2.00
(Made in Crystal only)			
1956/10	Coaster Ash Tray & Spoon Holder	15.00	1.25
1956/101	8 in. Oval Bowl		
1956/100	10 in. Bowl		
1956/105	Salt & Pepper Shaker .....	30.00	2.50

**FLORAL CENTER PIECE**

Made in Crystal and Smoke

1956/2	#1 Ash Tray w/peg .....	\$36.00	\$3.00
1956/3	Flower Block for Ash Tray .....	7.80	.65
1956/4	5 in. Peg Vase (Optic) .....	15.00	1.25
1956/2/3/4	Floral Center Piece .....	84.00	7.00
1956/3/4	Center Piece Block & 3 Vases.....	51.00	4.25

EDITOR'S NOTE: This is another of a series of articles authored by Darlene and Joseph Bourque, and pertaining to the Cambridge Glass Company of Cambridge, Ohio. They are being printed herein through the courtesy and permission of DEPRESSION GLASS DAZE, a monthly publication devoted to the study and trade primarily of glass made during the depression and the years following. Information concerning the publication may be obtained by writing DEPRESSION GLASS DAZE, 12135 North State Road, Otisville, MI 48463.



## “Triangle C Finds” Shell Candlesticks

by Darlene and Joseph Bourque

Last winter, the outside was white all over. The snowflakes had fallen all morning long. According to the latest weather bulletin, the storm had turned into a “Nor-Eastern” and was expected to last throughout the day.

I like snow. Snow is clean and brightens everything around it. As I sat back in my rocking chair sipping a cup of tea, I peered out the window to examine the fluttering and glittering New England scene before me. I felt contented.

Beneath an oak tree in the yard, a lonely squirrel shifted from one spot to the other, digging into the frozen powder. He labored away, and seemed to dig a little deeper each time. After several attempts to find food, he emerged successfully, stood on his hind legs and held an acorn with his forepaws. He turned this acorn around and around examining it to insure himself it was not a cull. He set it aside and once more, I could see nothing of him but tail and hind legs. He emerged holding a second acorn and scrutinized it as before. Satisfied of his two finds, he placed them into his cheek pouches and happily he scurried across the hoary field to his tree nest to sate his appetite. Hmmm, I mused. It would be a good day for the hunt. The Cambridge glass hunt, that is.

I left the comfort and warmth of home and drove to the first shop which was more of a junk shop than an antique one as its sign stated. I left shortly with negative results. The second shop consisted mostly of furniture and the few pieces of glass present were uninteresting. I visited a few more like shops and was still without purchase. The wind had picked up some speed and the snow had become more dense.

The next shop I went to had closed because of the inclement weather. It was about time to quit. There was one more bric-a-brac shop on my way home. It was the sort of a shop where one had to move junk about in order to see what lay beneath the piles. As I entered I stamped the snow off my feet onto an already wet floor.

Upon looking about, I was greeted by an acquaintance who was a local dealer of antiquities. “Hello to you” I returned her greeting, adding “Any luck today?”

“Nothing worthwhile,” she retorted. We spoke about the upcoming storm and regular things as do collectors and dealers. As we spoke, she fumbled about, moving junky items from one spot to another. She reached down and pulled out an item which was covered with gray dust. She examined it by turning it around once or twice in her gloved hands. To my surprise, she was non-committal towards the item and placed it back to the depth from whence it came, placing a few items on top of it as if to even out the array of junk on the counter top. I stood there speechless, yet forced myself to act unwaivered. The item she had dug out and re-buried appeared to be a Cambridge three footed shell ashtray. She left, thereafter, as we exchanged goodbyes.

I moved a cracked Depression Era plate, two nondescript tumblers and a damaged china bowl aside and there lay the three footed Cambridge shell dish. As I picked it up and brushed the dust off, I noted it was blue in color. A super find. Upon examination I noted it was flawless. But what a surprise I had when I looked inside the item. I discovered it was not an ashtray; it was a candle holder! A rare treasure. I did not recall seeing this item in any text book, nor did I recall seeing it in the Bennett Museum of Cambridge Glass in Cambridge, Ohio.

It was not priced. When I asked the shopkeeper the proverbial question of “How much?”, he quoted a paltry sum of \$3 for the pair! I must have had a startled reaction for the unexpected showing on my face for that one. “A pair?”, I queried, as my adrenalin hit nine on the ten scale. I went back to that dark nook to shift a few more items around and there it lay, the second of a flawless pair.

As previously stated, they were blue in color. But oh, how eminently blue! The rarity of these shell candlesticks was the scarce blue color. They were Cambridge’s Windsor Blue sometimes referred to as “milk blue.”

Now I could go home. I had found my two acorns. The nature of the beast somewhat resembles that of man. As the squirrel, I too had satisfied my appetite for that weekend. A weekend with the “CCS”<sup>\*</sup> that is.

As of this writing, only two other such candleholders have been brought to my attention. Should you have one or a pair, please let me know. You may write me in care of the NCC address.

<sup>\*</sup>Cambridge Collectors Syndrome

---

*“It isn't the people who tell all they know  
that cause most of the trouble in this world,  
it's the ones who tell more.” UNKNOWN*

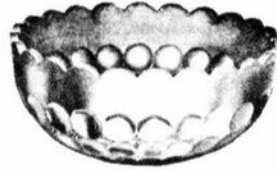
---

NEAR CUT BERRY BOWLS AND NAPPIES.

TRADE  
"Nearcut"  
MARK



2676. 11 in. Oval Orange Bowl.



2797. 7 in. Nappy.



2764. 9 in. Rose. Silver Etched Flowers and Leaves.



2670. 9 in. Deep Nappy.



2786. 9 in. Nappy.



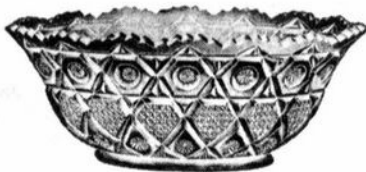
2910. 8 in. Deep Bowl.



2628. 8 in. Nappy, A Round.



2690. 9 in. Deep Nappy.



2629. 10 in. Nappy, C Belled.



2651. Special Nappy. 8 and 10 in.



2647. 9 in. Nappy. A Shape.



2588. 14 in. Fruit Bowl.



2718. 4½ in. Nappy.



2718. 10 in. Nappy.





2575 C Sewing Lamp.  
No. 2 Collar.



269 D Stand.  
No. 2 Collar.



497 B Stand.  
No. 2 Collar.



448 C Stand.  
No. 2 Collar.



360 F Stand.  
No. 2 Collar.



2575 O Footed Hand Lamp.  
No. 1 Collar.



269 A Footed Hand Lamp.  
No. 1 Collar.



497 O Flat Hand Lamp.  
No. 1 Collar.



448 O Footed Hand Lamp.  
No. 1 Collar.



360 O Footed Hand Lamp.  
No. 1 Collar.



2575 A Footed Hand Lamp.  
Made with A or B Collars.

No. 360 LAMP LINE  
Riverside Clinched on Collar

A Footed Hand Lamp, Height, 4 1/2 in.	7 1/2
OO Stand Lamp,	7 1/2
O " " " "	7 1/2
A " " " "	8 1/2
B " " " "	8 1/2
C " " " "	9 1/2
D " " " "	10
F " " " "	10 1/2
C Sewing " " "	8 1/2
D " " " "	8 1/2

No. 497 LAMP LINE  
Riverside Clinched on Collar

O Flat Hand Lamp, Height, 2 1/2 in.	4 1/2
A " " " "	4 1/2
OO Stand " " "	7 1/2
O " " " "	7 1/2
A " " " "	8 1/2
B " " " "	8 1/2
C " " " "	9 1/2
D " " " "	10 1/2
C Sewing " " "	7 1/2



448 OO Stand Lamp.  
No. 1 Collar.

No. 360 LAMP LINE  
Riverside Clinched on Collar

O Footed Hand Lamp, Height, 4 1/2 in.	7 1/2
OO Stand Lamp,	7 1/2
O " " " "	7 1/2
A " " " "	8
B " " " "	8 1/2
C " " " "	8 1/2
D " " " "	9
F " " " "	9 1/2
C Sewing " " "	7 1/2



2575 O Hand Lamp.  
No. 1 Collar.



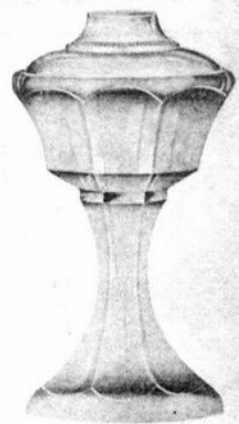
2574 C Sewing Lamp.  
No. 2 Collar.



516 D Sewing Lamp.  
No. 2 Collar.

No. 448 LAMP LINE  
Riverside Clinched on Collar

O Flat Hand Lamp, Height, 2 1/2 in.	4 1/2
O Ftd. Hand Lamp,	4 1/2
OO Stand Lamp,	7
O " " " "	7 1/2
A " " " "	8
B " " " "	8 1/2
C " " " "	8 1/2
D " " " "	9 1/2
C Sewing " " "	7 1/2



2581 C Stand Lamp.



2575 OO Stand, No. 1 Collar.  
No. 2575 LAMP LINE  
Plaster Collar. Cambridge Shrink  
on Collar. Riverside Clinched on  
Collar

O Flat Hand Lamp, Height, 3 in.	7 1/2
O Ftd. " " "	4 1/2
A " " " "	4 1/2
B " " " "	4 1/2
C " " " "	5 1/2
OO Stand Lamp,	7 1/2
O " " " "	7 1/2
A " " " "	8
B " " " "	8 1/2
C " " " "	9 1/2
D " " " "	10 1/2
C Sewing " " "	8 1/2
D " " " "	8 1/2
E " " " "	9



2574 O Footed Hand Lamp.  
No. 1 Collar.



516 O Footed Hand Lamp.  
No. 1 Collar.

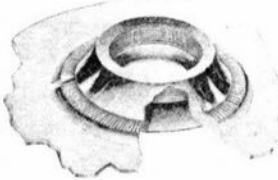
No. 2574 LAMP LINE  
Plaster Collar. Cambridge Shrink on  
Collar. Riverside Clinched on  
Collar

O Flat Hand Lamp, Height, 3 in.	7 1/2
O Ftd. " " "	5
OO Stand Lamp,	7 1/2
O " " " "	7 1/2
A " " " "	8
B " " " "	8 1/2
C " " " "	9 1/2
D " " " "	10
C Sewing " " "	8 1/2
D " " " "	8 1/2

No. 516 LAMP LINE  
Riverside Clinched on Collar.

O Ftd. Hand Lamp, Height, 5 in.	7 1/2
OO Stand Lamp,	7
O " " " "	7 1/2
A " " " "	8 1/2
B " " " "	9
C " " " "	9 1/2
D " " " "	10 1/2
C Sewing " " "	8 1/2

PATENT COLLAR.  
Clean Safe Durable  
Perfection in Lamp Construction.



2581 Footed Hand Lamp.  
No. 2581 LAMP LINE  
Riverside Clinch Collar.

O Flat Hand Lamp, Height, 2 1/2 in.	5 1/2
O Ftd. " " "	7 1/2
OO Stand Lamp,	8
O " " " "	8 1/2
A " " " "	9
B " " " "	9 1/2
C " " " "	10
D " " " "	10
C Sewing " " "	8

This is a full Double Collar with  
lock groove in the top or outer  
edge, and in the inner edge spun  
to the inside of the bowl, making  
the collar perfectly tight.  
Can not come loose or leak.  
This is the same style collar as  
used in the past by  
THE RIVERSIDE GLASS CO.

## **STAGE COACH ANTIQUE MALL**

*(formerly White Pillars Antiques)*

7525 East Pike  
Norwich, OH 43767  
614/872-3720

**MANY DEALERS. . .**

**PLENTY OF PARKING. . .**

**WIDE SELECTION OF GLASS  
AND POTTERY  
FURNITURE AND  
GENERAL LINE!**

**BUY and SELL**

**OPEN YEAR ROUND  
Weekdays - 10 AM - 5:30 PM  
Sunday - 12 noon - 5:30 PM  
Summer Evening Hours - by Chance!**

Located 9 miles E. of Zanesville, OH, on I-70 to Norwich Exit No. 164 - then ½ mile W. on Route 40.

---

## **— Classified —**

---

**FOR SALE:** Cambridge royal blue (cobalt) Tally-Ho. Nine 8" salad plates, 1402/23. Nine cups & saucers, 1402/19. Sugar & creamer, 1402/33. Six 10 oz. goblets, 1402/3 with no engravings. All pieces perfect. Will accept highest offer by April 1st, 1983. **ROGER HECKER**, 8394 Hilltop Lane, Kewaskum, Wisc. 53040.

---

**WANTED:** Would like to buy Cambridge Candlelight ice tea stems, 8" tall. **KENNETH BAGGETT**, 303 San Saba, Marble Falls, TX, 78654.

---

**WANTED TO BUY:** Carmen Nude Stem items. Write to: **SAWDEY'S ANTIQUES**, 4349 Caroline Drive, Erie, PA, 16509. Please include your phone number.

---

**BUYING:** Cambridge Rosepoint. Heisey Rose and Orchid, Fostoria etched dinnerware and Depression Glass. Also glass figures and unusual glass pieces. **NADINE PANKOW**, 207 S. Oakwood, Willow Springs, ILL, 60480, Phone: 312-839-5231.

---

---

**NATIONAL CAMBRIDGE COLLECTORS**

## **FLEA MARKET**

**Saturday - June 25th  
6 AM - 5 PM**

**GUERNSEY COUNTY FAIRGROUNDS**

**OLD WASHINGTON, OHIO**  
*(one mile East of I-70, Exit #186, on Old U.S. 40)*

**DEALER SPACE AVIALABLE**

For information or Contract write: **Larry Hughes, Chrm.**, P.O. Box 416, Cambridge, OH 43725

# DEALERS



# DIRECTORY

NOTE: When writing to the Dealers listed here, please enclose a SASE!

<p><b>EVELYN M. ALLEN</b> 135 Cynthia Street Heath, Ohio 43055 Mail Order &amp; Shows 614-522-1635 <b>SPECIALIZING IN CAMBRIDGE GLASS!</b></p>	<p><b>BENICIA ANTIQUE SHOP</b> 305 First Street Benicia, California 94510 <b>OPEN 11 AM - 5 PM</b> Closed Monday Z. E. LOPES 707-745-0978</p>	<p><b>CHARLES MIKULIK</b> Box 416 Elizabeth, N.J. 07207 <b>— COLLECTOR —</b> Always paying good prices for <b>CAMBRIDGE CAPRICE</b> in all colors 201-372-1101 <b>CARRY MOST TYPES OF ANTIQUES</b></p>
<p><b>DAVID NIELSEN</b> 109 Lincolnway LaPorte, Indiana 219-326-7276 <b>CAMBRIDGE - HEISEY - GENERAL LINE</b></p>	<p><b>VISIT HISTORIC BENICIA</b> and its 28 shops Off Interstate #80 ..... ..... North of San Francisco</p>	
<p><b>BERKELEY ANTIQUES</b> 69 Berkeley St. Boston, MA 02116 George or Frank 617-426-1048 <b>CAMBRIDGE, HEISEY, GENERAL LINE</b></p>	<p><b>ANDREJCAK'S ANTIQUES</b> 14533 Bayes Ave. Lakewood, Ohio 44107 Joe &amp; Karen Andrejcek 216-226-3417 <b>SHOWS ONLY — CAMBRIDGE — FENTON — CHINA</b></p>	<p><b>A. SPRINGBORN</b> 5434 Windridge Lane Orlando, Florida 32810 SHOP No. 34 — WEBSTER, FL Open Every Monday 305/298-3011</p>
<p><b>D &amp; D ANTIQUES</b> Columbus, Ohio <b>DICK SLIFKO SHOWS ONLY</b></p>	<p><b>THE HITCHING POST</b> 7467 S. R. 88 Ravenna, OH 44266 Ph. 216-296-3686 D. McDaniel <b>CAMBRIDGE — HEISEY — GENERAL LINE</b></p>	<p><b>FINDER'S KEEPER'S ANTIQUES</b> P.O. Box 303 Dayton, O. 45401 513-254-2937 P.O. Box 16023 Columbus, O. 43216 614-885-2726 <b>SPECIALIZING IN CAMBRIDGE GLASS!</b></p>
<p><b>THE GLASS CUPBOARD</b> 39 Shire Oaks Drive Pittsford, New York 14534 Marcia Ellis 716-586-7596 <b>CAMBRIDGE ONLY INQUIRIES INVITED</b></p>	<p><b>GEORGE HOFFMAN ANTIQUES</b> 129 South 4th Street Newark, Ohio 43055 614-345-8021</p>	<p><b>SNYDER ANTIQUES</b> P.O. Box 010 Gates Mills, Ohio 44040 <b>SPECIALIZING IN CAMBRIDGE GLASS</b> Mail Order, Shows 216-461-2110 By Appointment</p>
<p>JOHN PARR ROBERT PARR <b>"UP TO PARR"</b> Stoves, Depression Glass, Fostoria Cambridge, Heisey, Rugs, Antiques Art Deco, Fiesta, Collectibles Tues. - Sat. 2-7 p.m. (415) 552-9337 592 GUERREROST SHOP &amp; RESIDENCE SAN FRANCISCO, CA 94110</p>	<p><b>J &amp; L GLASS</b> Laws Antique Center, Manassas, VA 22111 and 10629 Main St. Fairfax, VA 22030 703/273-8579 <b>BUY &amp; SELL: Depression, Cambridge, Heisey, Duncan &amp; Fostoria Glass</b></p>	<p><b>1886 HOUSE</b> East Schodack, N.Y. 12063 MAIL and SHOWS Laurie Cruise 518-477-5895 <b>CAMBRIDGE - NORITAKE - AZALEA - D.G.</b></p>
<p><b>joyce's antiques</b> Bought and Sold Specializing in HEISEY • CAMBRIDGE • VERLYS • AMERICAN GLASS P O Box 114 Albertson, N Y 11507 (516) 499-3396</p>	<p><b>GLASS RAINBOW of California</b> Glass of the Depression Era In Historic Folsom 813-F Sutter Street Folsom, California 95630 (Sacramento Area) Neil and Ervina McCartney Shop (916) 985-2386 Res (916) 685-5485</p>	<p><b>BILL &amp; SHARON PHILLIPS</b> 21730 Priday Euclid, Ohio 44123 Ph. 216-261-4665 Shows Only <b>BUYING GLASS, ANTIQUES, ETC.</b></p>
<p><b>CHARLES A. SHAW</b> P.O. Box 147 Church St. New York, NY 10008-147 Phone (914) 476-6590 <b>AMERICAN GLASS SHOWS &amp; MAIL ORDER</b></p>	<p><b>AL STEELE</b> Westerville, Ohio 614-882-6483 or 614-882-7124 Mail Orders and Shows Only <b>HEISEY — CAMBRIDGE — PATTERN GLASS</b></p>	<p><b>BETTY'S ICE HOUSE ANTIQUES</b> 517 Fulton Street Wausau, Wisconsin 54401 Quality Antiques Cambridge - Heisey - General Line Betty R. Puestow 715-848-7145 Hours 1-5 Daily or by appointment</p>
<p><b>MARGARET LANE ANTIQUES</b> 2 E. Main St., New Concord, OH 43762 Lynn Welker 614/826-4418 <b>CAMBRIDGE GLASS MATCHING SERVICE</b> Hours Mon.-Fri. 1-5 PM or by Appointment</p>	<p><b>SHIRLEY S. LADOUCEUR</b> Antiques and Collectibles Specializing in Cambridge Glass <b>BY APPOINTMENT</b> 7597 Daphne Drive 315-458-5297 No. Syracuse, NY 13212</p>	<p><b>GREEN ACRES FARM</b> Antiques, Crystal Glass &amp; Collectibles <b>Sat. &amp; Sun. 1-7 PM (614) 927-1882</b> 2678 Hazelton Etna Road (State Route 310 North) Pataskala, Ohio 43062</p>



*A nonprofit organization dedicated to the preservation and study of Cambridge Glass*

**National Cambridge Collectors, Inc.**  
P O Box 416, Cambridge, Ohio 43725

You Are Cordially Invited  
To Become A Member Of The

**NATIONAL CAMBRIDGE COLLECTORS, INC.**

Benefits derived from membership include: receipt of our club publication, The Cambridge CRYSTAL BALL; informative Quarterly Meetings; Antique Shows; Auctions; and other special events.

The Cambridge CRYSTAL BALL is published the first of each month. This newsletter contains educational and interesting articles, questions and answers, information on reproductions and reissues, notices of all club functions, classified advertisements, dealers directory, and many other features of interest to collectors of Cambridge Glass.

Yearly dues are \$13.00 for Individual Members and \$3.00 for each Associate Member. All members have voting rights, but only one issue of the CRYSTAL BALL will be mailed per household.

Name (please print) \_\_\_\_\_ \$13.00

Mailing Address \_\_\_\_\_

City \_\_\_\_\_ State \_\_\_\_\_ Zip \_\_\_\_\_

Associate Members: (Must be at least 12 years of age and living in the same household.)

1. Name \_\_\_\_\_

2. Name \_\_\_\_\_

3. Name \_\_\_\_\_

Total number of Associate Members \_\_\_\_\_ at \$3.00 each. . . . . \$ \_\_\_\_\_

TOTAL AMOUNT ENCLOSED: \$ \_\_\_\_\_

Please make check payable to: NATIONAL CAMBRIDGE COLLECTORS, INC.

Recommended by \_\_\_\_\_

**USE THIS APPLICATION — NCC MEMBERSHIP MAKES A "GREAT GIFT"!**

**MEMBERSHIP**

Membership Contest now in progress —  
Invite and sign-up new members now!  
Prize — paid 1983 Convention Registration



**1983 NCC CONVENTION &  
ANTIQUÉ SHOW & SALE**  
June 24th, 25th, 26th, 1983

**THE SHENANDOAH INN**

P.O. Box 147, Old Washington, Ohio 43768  
I-70, Exit 186 - 7 miles E. of Cambridge  
Phone 614-489-5511  
Mention NCC when making reservations

**National Cambridge Collectors, Inc.**

P. O. Box 416  
Cambridge, Ohio 43725

