

Cambridge



Crystal Ball

ISSUE NO. 124

AUGUST 1983

Published monthly by the NATIONAL CAMBRIDGE COLLECTORS, Inc.
To encourage and to report the discovery of the elegant and boundless product
of the Cambridge Glass Company, Cambridge, Ohio

THOUGHTS from your President

During the ten years that The National Cambridge Collectors have existed its accomplishments have been many and varied. The ultimate accomplishment, and perhaps the main reason the organization was formed in the first place, was realized in June of 1982 when our MUSEUM was dedicated. It has been well received, the Membership is very proud of it. People who visit it are amazed at what they see when they enter the MUSEUM. It is small, but the interior and the displays are elaborate. It is on a par with any Museum but the question arises— DOES THE NCC MEMBERSHIP WANT TO REST ON ITS LAURELS OR DOES IT WANT TO KEEP IMPROVING AND EXPANDING ITS MUSEUM? We got our answer at the Annual Meeting on Sunday morning. Those of you who were unable to attend can give us your answer after you read this article. Let me explain.

We have known for some time that the MUSEUM is not large enough to house all of the displays of glass that been offered to us and there was a need to find more room. At the Directors Meeting on Thursday night prior to the Convention many ideas were offered. Knowing of the acceptance the Membership has given the MUSEUM the unanimous feeling among the Board members was that "WE CAN'T AFFORD TO STAND STILL". Who will keep visiting the MUSEUM if it remains the same year after year? Who will travel from far areas of the Country each year to attend the Convention and see the same MUSEUM they saw the previous year? Prior to the Annual Meeting the Board came up with a set of plans detailing what they thought should be incorporated in the improvements. Here are the plans. A twenty foot addition on the rear of the existing building which would give us about 750 sq. ft. of additional space. Part of this would be used for a much needed research room, part for storage and perhaps we would move the office and rest room to this area thus giving us much more display space in the main museum area. The roof on the present Museum is a flat built up roof, very old, and will probably need replaced in the near future. To eliminate this problem the plans call for a pitched roof to completely cover the existing building and the new addition, thus improving the overall appearance. We would also install much needed air conditioning and an electric heat pump to replace the oil furnace.

Several of us met on Saturday along with knowledgeable people in the building trades and came up with an approximate figure for these improvements. We had a problem. There was no where near the \$16,000-\$20,000 estimate in the MUSEUM operating fund. Spirits were dampened. We had already visualized in our own minds what our "NEW MUSEUM" was going to look like. Another Board meeting. The Committee presented its estimate to the Board. The discussion centered around the fact that we have to, as a Board, operate the Club as a business and we cannot spend monies we don't have. Also the small amount in operating would have to be kept for that purpose. We have other projects coming up which will net us some extra monies, we hope, but you don't spend money you don't have yet. The Board did approve the improvements "CONTINGENT UPON FINANCIAL BACKING OF THE MEMBERSHIP". We would tell the membership about the improvements at the Annual Meeting and get their reaction.

I announced to the membership present what our plans were and what the situation was and before there could be too many ifs and ands several people wanted to know what we were waiting for, "PASS THE HAT", and do you know that what represented about 10% of our membership threw about \$1400.00 worth of checks in the hat in about 5 minutes? Several others promised to send checks later. (I suspect they spent a bunch on glass at the Show and were a little short). Now we are asking the other 90% of the membership if they will help us also. I know many of you will probably never get the chance to visit your MUSEUM but you can be a great part of it with your financial help. Think of it as an investment in the future. Future generations will appreciate what you have done to promote the preservation of Cambridge Glass today. We ask you to help in any way you can. Your contributions are tax deductible and as Sue Rankin reminded us, check with the company you are working for, they may make matching contributions.

With the enthusiastic membership NCC has, we'll be around for a long, long time. Let's keep growing.

I got so hyped up about this MUSEUM thing that I almost forgot to tell you about the August Quarterly Meeting. Seriously this is always a very blah meeting. Everyone is coming down off the Convention high and it never did get much attention. Well this year we will try something different. How about a pot luck picnic at the city park in Cambridge on Sept. 11 instead? Something different. We'll get a shelter and spend all day having fun. We'll have a swap meet among members, nothing big, say enough to cover a card table. Everyone bring a dish, their own plate and silverware and we'll have a picnic meeting. Start making plans for it and we'll give you final plans for it in the next *Crystal Ball*.

Willard

MEMBERSHIP RENEWAL NOTICE

If the date on your
address label is -

8 - 83

This is your **LAST ISSUE** of the **CRYSTAL BALL**.

Please renew **NOW!**

CAMBRIDGE CRYSTAL BALL

Official publication of National Cambridge Collectors, Inc., a non-profit corporation with tax exempt status. Published once a month for the benefit of its members.

Membership is available for individual members at \$13 per year and additional members (12 years of age and residing in the same household) at \$3 each. All members have voting rights, but only one *Crystal Ball* will be mailed per household.

Back issues of the *Crystal Ball* are available (beginning with Issue No. 1, May 1973) for members only. Cost: \$.60 each or 12 issues for \$7.

1982-83 OFFICERS & COMMITTEE CHAIRPERSONS

PRESIDENT.....Willard Kolb
VICE-PRESIDENT.....Josephine Barstow
SECRETARY.....Janice Hughes
TREASURER.....William Smith
SERGEANT-AT-ARMS.....Don Armbrrecht

BOOK SALES.....Billy Harbaugh & Jo Barstow
BUDGET & FINANCE.....David Rankin
BY-LAWS.....David Rankin
CONVENTION.....Josephine Barstow
MEMBERSHIP.....Phyllis Smith
MUSEUM.....Billy Harbaugh
PROGRAM & ENTERTAINMENT.....Frank Wollenhaupt
PROJECT.....Willard Kolb
PUBLIC RELATIONS.....William Smith
PUBLICITY.....Joseph Andrejcek
1983 AUCTION.....Lynn Welker
1983 ANTIQUE SHOW.....Joy McFadden
PRINTING & MAKE-UP.....The Jeffersonian Company

CLASSIFIED ADVERTISING RATES

5c per word \$1.00 minimum
We cannot mix type size in classified advertisements. Abbreviations and initials will count as words. Payment in full MUST accompany all ads.

DISPLAY ADVERTISING RATES

	Members	Non-Members
1/8 page	\$ 4.00	\$ 6.00
1/4 page	7.00	10.00
1/2 page	12.00	18.00
3/4 page	17.00	25.00
Full page	22.00	33.00

DEALERS DIRECTORY

1" ad (5 line maximum) \$6.00 for 6 months

Cambridge *Crystal Ball* assumes no responsibility for items advertised and will not be responsible for error in price, description or other information.

Advertising copy, articles, and club news and notices must be in our hands by the 10th of each month to assure publication in our next issue. Advertisements containing reproductions will not knowingly be accepted unless clearly stated.

Opinions or information stated in any signed article or letter printed in the *Crystal Ball* are those of the writer only and may or may not agree with National Cambridge Collectors, Inc. The editor reserves the right to refuse or edit material submitted for publication to conform to the editorial style of the *Crystal Ball*.

PLEASE ADDRESS ALL CORRESPONDENCE TO

National Cambridge Collectors, Inc.
P.O. Box 416
Cambridge, Ohio 43725

Janice Hughes, Secretary Phone 614-432-7823
Willard Kolb, President Phone 614-695-0695

PLEASE NOTIFY US IMMEDIATELY OF ANY CHANGE IN YOUR ADDRESS!

Please enclose a self-addressed stamped envelope when requesting information!!

Club News

National Cambridge Collectors, Inc.
Tenth Annual Meeting
June 26, 1983
Shenandoah Inn, Old Washington, Ohio

The meeting was called to order at 10:00 A.M. by President Kolb. In attendance were 10 Board Members and 130 club members from 25 states.

The minutes of the February 25, 1983 Quarterly meeting were read by Janice Hughes and approved.

The Treasurers report will be given after Budget and Finance.

COMMITTEE REPORTS:

BY-LAWS: Chairman Dave Rankin reported only one change was proposed during the past year and it was defeated by the membership.

CONVENTION: No report.

CRYSTAL BALL: Co-Editor Janice Hughes thanked all the people who contributed articles during the past three months. The *Crystal Ball* is being mailed to over 800 members.

MEMBERSHIP: Chairman Phyllis Smith reported we now have 1253 members. Tom & Harriette Bond from Oklahoma City, Oklahoma won the free registration for obtaining 10 new members during the past year. They donated the money back to the Museum.

PROJECTS: Chairman Willard Kolb reported the cup plate will be ordered in the next color and should be available soon.

PUBLICITY: No report.

STUDY GROUP:

Janice Hughes reported The Cambridge Squares still meet informally and have purchased several stems this past year for the Museum.

Mark Nye reported the Florida Everglades have condensed the Caprice slide program and it will be available this fall.

President Kolb thanked the Everglades for their assistance in the South Florida Depression Club donating the \$1200.00 to the Museum.

Sandra O'Donnell reported the Fingerlakes Study Group from New York were all present and donated \$50.00 to the Museum.

Karen Jones on behalf of the Cambridge Buffs presented for loan to the Museum the Sample Room door from the Cambridge Glass Co.

Phyllis Hayes reported the Michigan Caprices did registration for Convention and will be starting on the Index for the *Crystal Ball*.

Joanne Paul stated the Tally Ho's are trying to stay active.

Joyce Colangelo reported the Tuscan Crowns have 10 members and are struggling and studying.

Tony Vimmer reported the Cambridge Nudes have only had one meeting on early patterns.

BUDGET AND FINANCE: Chairman Dave Rankin thanked Snyder Associates for doing the audit and the membership for approving the increase in the membership fee. He reported as of December 31, 1982 the Operating Equity was approximately \$14,000 and the Museum \$85,000.

Bill Smith gave the Treasurers report stating as of May 31, 1983 the Operating Equity to be \$14,841.60 and the Museum Equity \$86,466.91.

MUSEUM: No report.

PROGRAM: No report.

COLOR BOOK: Bill Smith reported they are working on the introduction and the Study Groups are still doing the pricing. The earliest possible release date will be at Auction.

FLEA MARKET: Chairman Larry Hughes thanked all his committee for their assistance.

SHOE: Chairman Joy McFadden thanked Willard Kolb for his assistance.

President Kolb thanked Barbara Shaeffer for dedicating the cover of the Glass Review to NCC for their 10th Anniversary.

OLD BUSINESS: None.

NEW BUSINESS:

President Kolb stated he would be sending letters to the members that donated to the Museum for tax purposes.

President Kolb announced the Board of Directors had approved the expansion of the Museum, new roof and replacing the furnace with a heat pump and air conditioning.

Dennis Snyder asked about additional lighting.

President Kolb stated we are considering tract lighting when funds permit.

Sandra O'Donnell stated that repairs should be considered a necessity instead of just cosmetic.

Bill Smith stated we need support from the membership.

Virginia Houston suggested we pass the hat.

President Kolb stated we did not want to do this.

Tony Vimmer donated showcases to the Museum.

Jan D'Amato thanked NCC for having the Museum as a place to meet and everyone for their hospitality.

Frank Long thanked everyone for the good time.

Joanne Paul stated we should pass the hat now. This was done.

Sue Rankin said everyone should check with their employers to see if they had matching funds.

Janice Hughes invited anyone visiting the Museum to call her and she would be glad to meet them.

Continued on Page 14.....

Study Club News

STUDY GROUP No. 3 - SOUTHERN FLORIDA "THE FLORIDA EVERGLADES"

The Florida Everglades did not meet during May. As in past years, the June meeting consisted of a "field trip" to the annual convention of the National Cambridge Collectors, Inc. Five of our seven members were able to attend this year and we were joined by two former members now residing in El Paso, Tx, Jim and Carmen Rea. Our next meeting to be held in July or August, will consist of a review of the slides taken for the forthcoming Cambridge color book. Regular meetings will resume in September.

The Florida Everglades will be preparing a shortened version of the Caprice Slide Program during the summer months and its availability will be announced in the September issue of the *Crystal Ball*. This shortened version will consist of some 45-50 slides and will be limited to examples of Caprice as well as some of the more unusual items.

As not all members have returned from the trip to Cambridge, a report on unusual items seen or purchased will be deferred until a later date.

Submitted by Mark Nye, Secretary

STUDY GROUP No. 7 - EASTERN OHIO "THE CAMBRIDGE BUFFS"

The Cambridge Buffs met at the home of Lena Barnes. Seven members were present. Candlesticks in different colors, style and patterns were studied. We discussed participation in the Convention. Show and Tell consisted of a Near Cut Feather decanter, crystal swan, amber cup and sugar with gold band and 2 inverted Thistle tumblers in carnival.

Submitted by Deanne Gray

STUDY GROUP No. 8 - SOUTHERN MICHIGAN "THE MICHIGAN CAPRICES"

On June 10th, the Michigan Caprices met at the home of Frank and Phyllis Hayes. We had two guests from the Detroit area, Len Lesniak and Hank Hall. We all enjoyed hearing about their Cambridge collecting.

I decided to have a study on stems. After preparing my Handy Dandy list of stems for the group, I still could not remember their numbers. However, it is fun and educational to get pictures of as many stems as possible for the groups list. The study group brought some stems from their collections so we had a lovely grouping of stems used on many different items. Would you believe, I forgot to have the Hayes photographer take some pictures. Sad.

Betty Dasen brought some lovely new baskets she had made. Then Clara Brown showed off a large basket she had purchased in the Ozarks. We could really pack some Cambridge goodies in those. Len had a very unusual small Rosepoint etched basket, a beauty! Lee Coppo had a gorgeous Diane etched 5½ inch compote on a Regency swan. Clara and Ray Brown brought several stems to help with my demonstration. They did not bring their latest find due to its size, but take my word, I have seen their #2800 Crystal Community Ewer and Basin. It is a prize!

Over coffee and dessert, we continued with talk of Cambridge glass and the up coming Convention. Happy Hunting.

Submitted by Phyllis Hayes

NATIONAL CAMBRIDGE COLLECTORS, INC.

FINANCIAL STATEMENTS

for the year ended DECEMBER 31, 1982

NATIONAL CAMBRIDGE COLLECTORS, INC.

COMPARATIVE BALANCE SHEET
DECEMBER 31, 1982

	THIS YEAR	LAST YEAR	\$ VARIANCE
LIABILITIES			
CURRENT LIABILITIES			
Accounts Payable	\$ 389.00	\$ 85.00	\$ 304.00
Current Mort Payable	690.00	637.11	52.89
Deferred Income (Sch K)	5,889.88	4,909.64	980.24
Accrued Pay Tax (Sch L)	.00	.00	.00
Accrued Taxes (Sch M)	372.61	459.50	(86.89)
TOTAL CURR LIABILITIES	7,341.49	6,091.25	1,250.24
LONG TERM DEBT			
Mortgage Payable (Note 3)	48,402.84	49,039.95	(637.11)
Current Long Term Debt	(690.00)	(637.11)	(52.89)
NET LONG TERM DEBT	47,712.84	48,402.84	(690.00)
TOTAL LIABILITIES	55,054.33	54,494.09	560.24
MEMBERSHIP EQUITY			
OPERATING EQUITY			
Beginning Balance	13,265.88	11,396.61	1,869.27
Net Income for Year (Note 1)	729.03	2,093.08	(1,364.05)
Prior Year Adjustments (Note 4)	.83	(.00)	.83
NET OPERATING EQUITY	13,995.74	13,489.69	506.05
MUSEUM EQUITY			
Beginning Balance	71,147.59	56,792.80	14,354.79
Net Income for Year (Note 1)	9,607.17	14,130.98	(4,523.81)
Prior Year Adjustments (Note 4)	4,641.00	(.00)	4,641.00
NET MUSEUM EQUITY	85,395.76	70,923.78	14,471.98
TOTAL MEMBERSHIP EQUITY	99,391.50	84,413.47	14,978.03
TOTAL LIAB AND EQUITY	\$ 154,445.83	\$ 138,907.56	\$ 15,538.27

	***** LAST YEAR	COMBINED FUNDS THIS YEAR	***** VARIANCE
INCOME: OPERATING			
Advertising	\$ 713.35	\$ 1,006.80	\$ 293.45
Prorated Members Dues	8,533.09	9,131.83	598.74
Crystal Ball Sales	796.40	562.50	(233.90)
Convention Income	4,438.00	4,108.00	(330.00)
Meeting Income	469.00	392.00	(77.00)
Interest Income	8,617.04	7,627.29	(989.75)
Donations	1,383.20	4,840.44	3,457.24
Royalties	1,614.37	1,677.00	62.63
Antique Show (Net)	1,979.05	1,735.29	(243.76)
Auction (Net)	1,481.73	1,432.29	(49.44)
Book Sales (Net)	2,150.29	2,101.38	(48.91)
Other Sales (Net)	3,228.87	636.22	(2,592.65)
Flea Market (Net)	360.12	623.57	263.45
Direct Income (Net)	985.00	636.33	(348.67)
All Other Income	233.07	111.05	(122.02)
	<hr/>	<hr/>	<hr/>
TOTAL INCOME	36,982.58	36,621.99	(360.59)
OPERATING EXPENSES			
Advertising	513.69	660.30	146.61
Crystal Ball Expense	622.86	141.99	(480.87)
Convention Expenses	3,692.09	3,547.40	(144.69)
Depreciation	1,551.10	2,473.84	922.74
Insurance	341.00	803.21	462.21
Interest Expense	5,428.99	5,362.89	(66.10)
Meeting Expense	402.08	405.00	2.92
Office Expense	480.48	434.54	(45.94)
Postage and Box Rental	3,480.55	4,322.74	842.19
Printing Crystal Ball	3,583.16	4,958.50	1,375.34
Salaries and Wages	.00	1,173.31	1,173.31
Security	.00	140.00	140.00
Supplies	.00	189.23	189.23
Taxes and Fees	375.51	446.06	70.55
Telephone	.00	278.87	278.87
Utilities	139.28	947.91	808.63
All Other Expense	147.73	.00	(147.73)
	<hr/>	<hr/>	<hr/>
TOTAL EXPENSES	20,758.52	26,285.79	5,527.27
NET INCOME FOR YEAR	\$ 16,224.06	\$ 10,336.20	\$ (5,887.86)
INCOME: MUSEUM			
Advertising	\$ 713.35	\$ 1,006.80	\$ 293.45
Prorated Members Dues	8,533.09	9,131.83	598.74
Crystal Ball Sales	796.40	562.50	(233.90)
Convention Income	4,438.00	4,108.00	(330.00)
Meeting Income	469.00	392.00	(77.00)
All Other Income	141.98	104.47	(37.51)
	<hr/>	<hr/>	<hr/>
TOTAL INCOME	15,091.82	15,305.60	213.78
OPERATING EXPENSES			
Advertising	513.69	660.30	146.61
Crystal Ball Expenses	622.86	141.99	(480.87)
Convention Expenses	3,692.09	3,547.40	(144.69)
Depreciation	26.10	26.10	.00
Meeting Expenses	402.08	405.00	2.92
Office Expense	480.48	434.54	(45.94)
Postage & Box Rental	3,480.55	4,322.74	842.19
Printing Cryst Ball	3,583.16	4,958.50	1,375.34
Taxes and Fees	50.00	80.00	30.00
All Other Expenses	147.73	.00	(147.73)
	<hr/>	<hr/>	<hr/>
TOTAL OPERATING EXPENSES	12,998.74	14,576.57	1,577.83
NET INCOME FOR YEAR	\$ 2,093.08	\$ 729.03	\$ (1,364.05)

CONVENTION ACTIVITIES

By Willard Kolb, Co-Editor

A very good Convention again this year. In fact it was a terrific Convention. Each year we hope it will be bigger and better than the previous year, and each year it happens. Before long we're going to have to build our own Convention center. We set attendance records in about everything, the Show, the Flea Market, registration, Get Acquainted Party, Banquet, and both Breakfasts. Everything went so smoothly all weekend and everyone had a lot of fun. The dealers booths at the show are always breathtaking. (The booths are also full of rampaging buyers on Preview night). The combined Get Acquainted Party and 10th Birthday party was so well attended there was hardly room to move around. (Yes, the Music was a little loud for us old folk, but my son thought it was just about right). How about all those beautiful Birthday gifts the MUSEUM received? We'll put a list of all the goodies in the *Crystal Ball*, if not this time the next.

Can you believe that after celebrating well into the wee hours of Saturday morning that Larry Hughes and his Flea Market crew were up and headed for the Fair Grounds at 3 AM? I'll bet W.T. Dawson doesn't come all the way from Oregon next year to be on Larry's crew. And the petition that was handed to me by Larry and his crew after the Flea Market, stating that they here-by give me notice that they will not do the Flea Market next year and signed by David Kolb, Lynn Kolb, Larry Hughes, Billy Harbaugh and Doyle Groves has been nulled because my son spelled his name wrong. You'll all do it again next year because you love it and you know it. Seriously, they are doing so well that next year they are expanding into two buildings.

If you think they were dreary eyed at about 9 AM, so were a lot of people who got up early to be at the Flea Market when it opened, so that they could get back for the Saturday morning breakfast to hear our Speaker Phyllis Smith and her "History of N.C.C." No one fell asleep and that's for sure. She really woke them up. (You know, Phyllis, I don't think you did tell us about the first N.C.C. Convention now that I think about it. You shouldn't have asked Bill whether you did or not, I think he sort of misled you).

Well, Saturday night brought us more good times. A delicious meal followed by our guest speaker, Gwen Shumpert and her "Treasures in Glass". No one even moved in their seats. Such beautiful treasures she brought to show us. All of those unusual glass animals. I sure would like to have them in my zoo. I sat next to Gwen as she was telling her story about each of the animals and as she put them down on the table in front of her it became a little crowded so I decided I'd help by spreading them out a little bit so they wouldn't get damaged. I whispered to her that I'd try not to break any of them when I handled them and she told me that would be alright, she'd only kill me if I did. Two of the greatest people in collecting, Gwen and Billy Shumpert. We thank you for being with us.

Sunday morning found everyone up early again to attend breakfast and the Annual Meeting. Minutes of the Annual Meeting can be found elsewhere in this *Crystal Ball* issue. Most people spent the remainder of Sunday afternoon saying good-byes and returning to the Show room to make a final deal on the piece of glass they had been wanting.

We all had fun bringing you Convention 1983, hope you will return next year and that many more will get Conventionitis in 1984.



Birthday cake



Phyllis Smith



President Kolb & Gwen Shumpert



Willard Kolb, Joy McFadden holding nude stems in original box



Evelyn Allen, Lynn Welker holding Monkey lamp



Frank Wollenhaupt holding Near Cut lamp



Jo Barstow with Banquet centerpiece



J.P. Martin, Dennis Snyder, Robert Norris, Ed Griffith



Show

Joe Andrejcek's Review of the 8th Annual Antique Show & Sale

In the June issue of the *Crystal Ball*, our esteemed President, Willard Kolb stated that he knew where we could find a lot of Cambridge Glass and once again he was right. Unfortunately, there were not any broken or chipped pieces to add to his large collection of broken or chipped pieces.

The Place? At the 8th Annual Cambridge Show and Sale in the Blue room of the Shenandoah Inn, Old Washington, Ohio.

Even after 15 hours of almost constant selling and wrapping (ask any dealer how sore their arms get from handling tissue paper and opening paper bags), there remained a large variety of quality Cambridge glass on the dealers shelves.

If you ever saw a piece of Cambridge glass in a catalogue—it was in the show this year.

Now, let us walk down memory lane—with prices, too!

A beautiful Helio, 10 piece Dresser Set—sold and in Fla. now. A Japonica red covered urn and a couple of pairs of blue candlesticks—each over \$1000. That's dollars not yen. Shelf after shelf of Rosepoint, from covered butterdishes, lemon trays, marmalades to stemware, all shapes, sizes and colors, nite sets for over \$400 and ice buckets running around \$65.00. The above should also be said of Wildflower, Diane and Elaine. It was there. All except the 10 in. dinner plates—who is hoarding these?

It is a sure bet that each and every dealer had at least 3-5 pieces of Caprice on their tables, in all colors except pistachio. No dinner plates in this pattern either.

If you like to look at nudes (Cambridge not Playboy) some were in their original box for over \$700—they were there in all their glory. Each year seems to bring out more and more of the Near Cut patterns. Is it because it is more readily available or are people finally recognizing Near Cut as the Beautiful Cambridge Glass it truly is?

Both Daisy baskets could be seen this year, the arch foot and flat. 2 or 3 different Near Cut lamps—the #2351 lamp went real fast. The light bulb didn't even get hot. Other baskets were the Four Line, Buzz Saw and Inverted Thistle. The Carnival Near Cut pieces were, a small perfume bottle and the Buzz Saw pitcher for \$300 plus. The Near Cut lamps were not alone. The Brown Monkeys still hugging each other (not for warmth) were priced around \$400 and the Owl sat there looking wise.

A couple of "two fisted", Moonlight Blue Turkeys for over \$600 and an Amber Turkey close to \$500 made their appearance this year. Other Cambridge animals were, two sizes of pink Bunny Boxes, a couple of Butterflies and moths plus Bridge Hounds in all colors. Sitting on the edge of one table was a complete Wildflower punch bowl, underliner plate and cups for over \$1000.00. Just beautiful. Back to the lamps, again. One booth had a lamp made from a Cascade vase and ashtrays, a Primrose vase and also seen around the area were lamps made from Green Calla Lily candlesticks and Doric Column candlesticks. Cambridge glass is Cambridge glass even if wires are hanging out the back.

A Penna. couple across the aisle had a kinky looking Mocha drape on their table with a 13½ in. Mocha Draped Lady standing on it. You could almost tell they had been away from home too long. New York dealers brought and sold a quantity of Candlelight pieces which do not seem to be as popular as Rosepoint and Caprice but are very beautiful and should be just as popular.

Some other quality Cambridge pieces which were for sale included an amethyst Tally Ho Top Hat for \$200 and a royal blue hat, same pattern for over \$200.

A very delicate looking Hunt Scene Lemonade Pitcher with 5 matching glasses in the Convention color of one of the pinks.

Also, saw a couple of Ebony, Silver encrusted Pitchers priced over \$250.

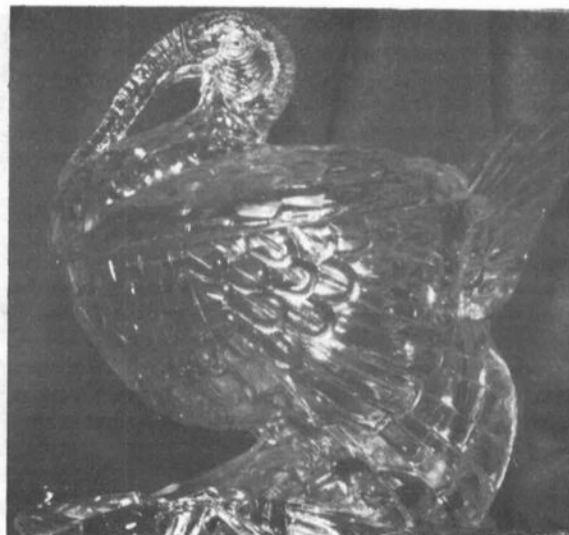
An avocado, 6 piece Desk Set with bookends, pencil holder etc. for the price of \$375.

The kneeling boy candlestick in green had a price tag of \$300.

A pretty sight was a group of Regency stems in all the delicate looking shades of blue, yellow, green etc.

Lastly, for this article anyway, were a couple of pieces of Cambridge, artist, Art Pottery. One had a price of \$145. The other was sold, fast.

Continued.....



Could not help thinking that you know you are at a good glass show when you have to move 2 or 3 pieces of glass just to see the equally good glass on the back of the shelf. And you can't decide which of the 3 pieces you are holding in your two hands are the ones you want or should buy. You know the person behind you is just waiting for you to get out of their way.

As you all know, another good sign of a successful glass show is directly proportional to the number of empty boxes that the dealers have to drag home to N.Y., Ohio, Fla., Penna., etc., etc., to fill again for next year.

But, we couldn't do this without you the Cambridge Collectors. THANK YOU!

N.D.G.A. CONVENTION BRINGS NEW MEMBERS TO N.C.C.

by Bill and Phyllis Smith

The National Depression Glass Association Convention, held the weekend of July 1-3, proved a GREAT place to be ... for Cambridge, as well as Depression glass collectors. This 9th Annual N.D.G.A. Convention Show & Sale, held in St. Charles, MO, was hosted by the Gateway-Depressioners Glass Club of Greater St. Louis.

Several N.C.C. members, who are also members of N.D.G.A. and the Gateway Club, were responsible for inviting the Smiths to be guests and to represent N.C.C. A table was provided for N.C.C. promotion and book sales, and on Saturday afternoon, Bill presented a seminar on "Cambridge Glass Produced During the Depression Era."

A large display containing both Cambridge and Heisey glass, as well as a representative piece of each of the well known Depression glass patterns, provided the background for our display and sale table. Of course, it also prompted many questions concerning glass of all kinds, but especially Cambridge! There were two Showrooms with approximately forty dealers who displayed not only Depression glass, but an abundance of Cambridge and other handmade glass which was produced during the Depression era.

It is with a great deal of pleasure that we extend a very warm "Welcome" to the fourteen NEW MEMBERS who signed up during this outstanding weekend. We hope you will enjoy your N.C.C. membership as much as we enjoyed meeting you and other N.D.G.A. members, during our weekend in St. Charles.

Should you be interested in learning more about N.D.G.A., just send a note (include a SASE) to: Georgeann Hemry, N.D.G.A. Secretary; 8337 Santa Fe Lane, Dept. NCC; Shawnee Mission, KS 66212.

MEMBERSHIP CONTEST WINNER ANNOUNCED

by Phyllis Smith, Membership Chairman

The winner of the 1982-1983 Membership Contest was announced at the N.C.C. Annual Meeting, held on Sunday morning during the 1983 Convention. Harriette Bond was proclaimed the winner and was called forward to receive her Prize of a check in the amount of \$30 (paid Convention expenses). She and her husband Tom were jointly responsible for bringing ten (10) NEW members into N.C.C. during this past year.

Harriette accepted her check and then immediately returned it, stating that she wanted to donate it to the MUSEUM Fund. This generous act was very much appreciated! Harriette and Tom reside in Oklahoma City, OK. They have been members of N.C.C. since 1980, but this was the first opportunity they have had to attend one of our Conventions.

A total of seventy members participated in our membership contest this year, and we would like to take this opportunity to say "Thank You" to each and everyone of you! Every member that you brought in, was a big plus for N.C.C.!

Special recognition must go to Marcia Ellis and Naomi Gamble, who shared second place by bringing in seven members each. Dorothy Kilpatrick was right behind them with six, and Glen Everett and Debbie Snyder each brought in five!

Bringing in a total of three members each were Judy Bennett and Bonnie VanSickle. Following right behind them with two new members each were: Janice Barnett; Richard B. Bennett; Patricia Christiansen; Keith S. Davis; Ruth L. Donnell; Peg Gotschall; Floetta Griffith; Beverley Hanson; Phyllis Hayes; George Hoffman; Rose MacConkey; Naomi Opphile; Shirley Patterson; Al Springborn; Zeta Todd; Norma Warden; and Pauline Westfall.

When we say that "every new member" is a PLUS for N.C.C., we truly mean just that! The following members each brought in one new member and we sincerely appreciate their efforts. Please keep up the good work and bring in one or more this coming year. Bringing in one member each were: Clarice Bartlett; Pat Binkley; Joseph A. Bourque; Robert Brown; Thomas A. Brown; Blanche Cannava; Becky Carter; Martha Cook; Betty Cusick; Donna Davis; Pamela Earussi; Shirley Freshley; Bill Gaston; Robin Gates; Nancy Guegold; Shirley Hirshberg; Perry Hogue; Dorothy Kell; Katie Lincoln; Falira Lisak; Betty J. Maki; Joan McDowell; Elizabeth Moe; Mary Norris; Dale Offerman; Portia Oldham; Nadine Pankow; John Parr; Nellie Rankin; Sandra Richardson; Robert D. Robinson; Don Rogers; Nancy Sarchet; Darlene Schlotthauer; Gloria Simmons; K.C. Star; H.J. Tranchitella; James J. VanSkiver, Jr.; and Barbara Wyrick.

Although Board members are not eligible to compete for the membership prize, the following members did bring in one or more new members each: Joe Andrejcek; Bill Harbaugh; Janice Hughes; Willard Kolb; Dave Rankin and Bill Smith. Your membership Chairman was also responsible for several new members.

Apple-Blossom

By Mark Nye

We depart this time from the Cambridge "girls" and turn to the Cambridge "garden" for a topic. The "girls" will return in a future issue.

Unlike the natural flower of the apple tree, Cambridge Apple-Blossom or Plate Etching No. 749 comes in a wide range of colors and some special treatments. Colors known to this writer are Crystal, Gold Krystol, Willow-Blue, Amber, Emerald (light or Apple-green), Heatherbloom, Peach-Blo, Forest Green, Amethyst, Ebony and Royal Blue. The latter three colors, at least, were used in conjunction with silver encrustation of the etching. It is possible metallic encrustation was done on other colors as well.

Silver encrusted Apple-Blossom was referred to as D/970-S and is shown on Ebony ware on several pages of the 1930-34 Cambridge catalog as reprinted by the NCC, Inc. Pictured are such items as the #3400/68 sugar and creamer, #1020 cocktail shaker, #1070 36oz pinch bottle, #1228 9" oval vase and several bowls. See photos on page 12.

Page 31-13 of the 1930-34 catalog reprint is entitled "Silver Decorated Ware". There is no mention of color but since there is duplication of items found in the Ebony/silver encrusted section of preceding pages, these were probably being offered in at least Amethyst and perhaps other colors. An advertisement in the August 1931 issue of Crockery and Glass promotes silver encrusted Apple-Blossom as "offered in a wide selection of table pieces."

I have in my collection a #646 5" candlestick, (keyhole style, single light), in Royal Blue with the Apple-Blossom etching silver encrusted. This is the first piece of this color I have seen with the Apple-Blossom etching and do not know to what extent this etching was used on Royal Blue. My guess is very little was done and all would have been silver or gold encrusted.

Dinnerware or luncheon sets are known in all of the colors previously listed with the exception of Forest Green, Ebony and Royal Blue. The pieces I have seen in Forest Green have been occasional, accessory or service items; for example, the #3400/94 3½" puff box and #3400/38 80oz ball shaped jug. Ebony Apple-Blossom, most of which if not all, would have been metallic encrusted, was apparently limited to the type of items shown in the 1930-34 catalog reprint. Royal Blue production was probably limited to vases, candlesticks and console bowls. All of the remaining colors would also have been used for a wide range of occasional, accessory, service or decorative items.

The 1930 Cambridge catalog devoted the first nine pages to the Apple-Blossom etching, 7 of which show items from the #3400 line and 2 were used to picture the nos. 3135 and 3130 stemware and 2 jugs. From the #3400 line are shown various accessory pieces such as console bowls, candlesticks, comports and the #3400/9 candy box and cover, in addition to dinnerware. Both styles of the #3400 plates, round and square are shown with the etching as is the club luncheon plate, #3400/66. (This latter piece was recently seen in Gold Krystol.) Two styles of creamers and sugars, nos. 3400/16 and 3400/68, the #3400/52 butter and cover along with serving bowls, relishes and platters are also shown as are the cream soup with saucer, cereal bowl, fruit saucer and the #3400/54 cup and saucer.

While all of the dinnerware etched Apple-Blossom shown in the 1930-34 catalog reprint and that I have seen, has been from the

#3400 line, it is possible other blanks might have been used. However, production would have been limited since the #3400 line was the primary blank used for this etching.

So far, I have been able to identify 9 Cambridge stemware lines that were etched Apple-Blossom. These are the nos. 1069, 3011, 3025, 3035, 3120, 3124, 3130, 3135 and 3400. Each of these will be discussed.

By now, I am sure everyone is aware of the Apple-Blossom etched goblet that is shown in a popular book dealing with Fostoria glassware. At first glance, the item appears to be a #1066 goblet but careful study of the stem portion and the "ball" in particular, reveals the apparent absence of vertical dividing lines in the "ball". In the 1930-34 catalog reprint are 2 illustrations of a #1069 11oz goblet, once on page 33-21 and again on page 33-B-4. This goblet appears to be similar to the #1066 line except for the lack of vertical dividing lines in the "ball". Thus, it is my opinion the pink goblet etched Apple-Blossom shown in the Fostoria book is a #1069 goblet and not from the #1066 line. I am not aware of any other stemware from either line with this etching. It is possible the etching was used on the #1066 line since other etchings were applied to this stemware. See photos on page 12.

Shown in the reprinted 1931 catalog supplement are the #3011 or nude banquet goblet, table goblet, tall sherbet or champagne, cocktail (#3011/9) and the 7" cupped comport, etched Apple-Blossom. See photos at bottom of pages 11 and 12. In the articles on the nude stem line by Hughes and Welker, previously published in the *Crystal Ball*, reference is made to wines and clarets etched Apple-Blossom, as well as to the sweetmeat. No specific information regarding colors was supplied by these authors except that reference to tall comports, cupped and flared, in Crystal and colors, is made.

A complete selection of #3130 stemware was produced with the Apple-Blossom etching, in at least 5 colors, 1 color combination and a special treatment. The known colors are Crystal, Emerald (light), Gold Krystol, Peach-Blo and Willow Blue; with the bowl, stem and foot all in the same color. The one color combination known consists of Crystal bowl with Ebony stem and foot. A Crystal #3130 footed tumbler is known with the medallion portion of the pattern encrusted gold and black. It is possible Amber #3130 stemware was etched Apple-Blossom although I am not personally aware of such being found. See photo on page 12.

Apple-Blossom etched #3135 stemware may be found in Crystal, Emerald (light), Peach-Blo and Willow-Blue. In all probability, this line was also done in other colors, particularly Gold Krystol and Amber, with this etching. All pieces seen have been solid color or all Crystal. See photo on page 12.

The #3400 line of stemware, etched Apple-Blossom, with colored bowl, stem and foot, is known in Amber, Emerald (light), Gold Krystol, Peach-Blo and Willow-Blue. This line was also produced in all Crystal and Crystal bowl with Ebony stem and foot with the etching. Other colors are possible. See photo on page 12.

The #3025 stemware etched Apple-Blossom no doubt came in the pastel colors of the 1930-34 period but I have been unable to find a reference to document which colors were used nor have I seen the line with this etching. It is shown in the 1931 catalog supplement but the general catalog contained only a general reference

Continued.....

to color, no specifics were provided, such information being contained in the price lists.

Use of the Apple-Blossom etching on the #3120 and #3124 stemware lines has been reported by a collector of this pattern and who owns examples. The #3120 piece is in Crystal and a #3124 champagne is in Gold Krystal. No doubt other colors were used for both lines.

Another collection contains #3035 stemware in Heatherbloom with the Apple-Blossom etching. Whether this stemware line in other colors was used in conjunction with this etching is not known but cannot be ruled out. This same stemware in Heatherbloom is also known with the Gloria etching.

Six styles of Apple-Blossom etched pitchers or jugs, as they were called by Cambridge, are shown in the 1930-34 catalog reprint and no doubt other jugs from the era were also decorated with this etching. Those shown are the #711 76 oz footed jug and cover, #1205 64 oz jug, #3400 50 oz footed jug, #935 64 oz jug, #3400/38 80 oz ball shaped jug, and the #3400/27 67 oz jug. All of these would have been produced in Crystal and color.

Vases are also a part of the Apple-Blossom story. Among those shown in the 1930-34 catalog reprint are the #1300-8" and #1283-8", both of which appear to be in Crystal with an Ebony base; #1304-10", #1308-6", #1234-12", 1309-5" and the #1296-12". It can be assumed, with some degree of confidence, that many of the other vases illustrated were also produced with the Apple-Blossom etching. As with the jugs, vases would have been produced in color as well as Crystal.

The #693/3000 2pc canape set is to be found with the Apple-Blossom etching, as are decanters, ice buckets and other snack

and beverage accessory items. It is interesting to note that the canape plates in my collection have a Laurel Wreath band on the rims, in addition to the Apple-Blossom etching on the flat part of the plates.

Recently seen were a pair of boudoir lamps incorporating Amber #1309 vases, etched Apple-Blossom, as the main portion of the lamp base. These would not have been assembled by Cambridge but rather by some lighting company, whose identity remains unknown.

A blown #3121/4 low candy box and cover in Crystal and etched Apple-Blossom has been acquired for my collection. For those who are unfamiliar with this piece, both the lid and box are blown and etched.

Since Apple-Blossom was an important etching in the Cambridge line during the early 1930s, a collector should not be surprised to find the etching on almost any piece of the #3400 line in production during that era, or for that matter, perhaps on any piece or line produced during those years and to which the etching was adaptable and compatible.

First introduced in 1930, the Apple-Blossom etching was discontinued prior to 1940, most likely in the mid 1930s. Later, the name Apple-blossom was used for a silk screen decoration of entirely new design not associated with the earlier etching.

If any reader has additional information regarding this etching or those discussed in earlier articles, or wishes to correct errors of commission or omission, please do not hesitate to write me in care of the *Crystal Ball*. I will share all information received in a future article. Comments are also invited in the form of letters to the editor.



11 oz. Table Goblet



3½ oz. Cocktail



3400/68 Sugar and Cream
D/970-S



3 oz. Cocktail



711-76 oz. Ftd. Jug and Cover



1066. 6 oz.
Cafe Parfait



1069. 11 oz.
Goblet



1228-9" Oval Vase
D/970-S



3 oz. Cocktail



1020 Cocktail
Shaker 2-Lip
Chrom. Top
D/970-S



1070 36-oz.
Pinch Bottle
D/970-S

ANTIQUES PLUS

P.O. Box 249
Hamlin, Pa. 18427
717-689-2014

CROWN TUSCAN

#3500/42 12" Urn, gold encrusted, Rosepoint	\$200.00
#3500/42 12" Urn, gold encrusted, Portia	200.00
#1240 12" signed oval bowl, gold encrusted, Portia	95.00
7" Nude stem comport, seashell pattern, hand painted	135.00

ROSEPOINT

#3121 Stemware 8 5 oz. footed tumblers	each 15.00
#3400/62 8 8½ plates	each 10.00
#477 9½" Pickle dish	15.00
#3400/4 12" four footed, flared bowl	37.50
#1337 Cigarette holder	18.00
#228 11" Vase w/sterling base	65.00

CARMEN

#103 Mount Vernon 3 part relish 8"	30.00
#3011 7" Nude stem flared comport	90.00
#3500/55 6" Gadroon basket	28.50

ROYAL BLUE

#3011 7" Nude stem flared comport	90.00
#1307 5" 3 light candelabra	pair 75.00
Two-tone 10" Keyhold vase Pg. 37 Bennett book	45.00

AZURITE

10" Candlesticks Pg. 24 Bennett book	pair 80.00
--	------------

EBONY

9" Doric column candlesticks w/label Pg. 34 Bennett book	pair 90.00
--	------------

HEATHERBLOOM

#3400/647 6" 2 light keyhole candelabra, Diane	pair 90.00
--	------------

EVERGLADE

#2 Crystal candlesticks	pair 28.00
-------------------------------	------------

Plus many other Cambridge items. Please contact for your needs.

— Classified —

WANTED TO BUY: Carmen Nude Stem items. Write to: SAWDEY'S ANTIQUES, 4349 Caroline Drive, Erie, PA, 16509. Please include your phone number.

BUYING: Cambridge Rosepoint, Heisey Rose and Orchid, Fostoria etched dinnerware and Depression Glass. Also glass figures and unusual glass pieces. NADINE PANKOW, 207 S. Oakwood, Willow Springs, ILL., 60480, Phone: 312-839-5231.

FOR SALE: CAMBRIDGE, Heisey, Duncan and other fine glass. Send SASE for list. M & J Antiques, c/o Sir Speedy, 431 Main St., Woburn, Ma 01801

FOR SALE: Heatherbloom, Portia 80 oz. ball jug and 14 12 oz. tumblers. \$600.00, Amethyst decanter, pinched sides, golf ball stopper and 6 matching pinched glasses, \$195.00. Cashiers check or money order. Mailing extra. Betty Boone, P.O. Box 1162, Thomson, Georgia 30824

WANTED: Colored Cambridge bobèche, any color, pairs please. Joyce Dawson, 2418 W. Crestview, Roseburg, Ore. 97470. Phone 503-672-4047

WANTED: No. 3011 covered nude stem cigarette box or ashtray in any color, also, No. 2 rooster muddler in any color. Antiques Plus, P.O. Box 249, Hamlin, Pa. 18427 or Phone 717-689-2014.

FOR SALE: Cambridge Wildflower mayonnaise 3400/129, 6" 2 part relish, 8" 3 part relish 3400/91, (2) 7" salad plates 3400/22, (5) 8" salad plates 3400/22. Cambridge Amber Sweetmeat 3400. Cambridge 4½" twisted muddler No. 1.

WANTED: Cambridge Rosepoint, (6) cups and saucers 3900/17, individual sugar 3500/15, Cambridge etching, 731 finger bowls and underplates, small accessories. Cambridge Wildflower, 4" candlestick 3900/3121, water pitcher 3400/141, (7) 2½ oz. wines 3121, (8) 6½" bread and butter plates 3900/20, (2) 8" salad plates 3900/22, (11) 1 oz. Cordials 3121, (11) cups and saucers 3900/17. Caryl Halle, 2730 Inverness Road, Shaker Heights, Ohio 44122. Phone 216-464-4726.

WANTED: Cambridge Roselyn 9 oz. Tall Goblets, 4½ oz. Clarets, 3 oz. Cocktails. Judy Johnson, 400 S. Main, North Canton, Ohio 44720. Phone 216-497-1303.

Club News continued from Page 3.....

The door prize was won by Betty Cusick.

Dick and Elaine Storch presented the video of the Museum dedication to the Museum.

Frank Wollenhaupt and Lynn Welker presented Show and Tell.

Bill Smith announced a total of \$1354.00 was realized from passing the hat.

The tentative date for the next Quarterly Meeting is August 28.

A motion was made by Jo Barstow to adjourn at 11:30 A.M.

Janice Y. Hughes
Secretary

ELECTION RESULTS

Janice Hughes, Lynn Welker and Evelyn Allen were elected to the Board of Directors to serve for four years.

Our thanks to Ruby Landman for her years of service to the Board.



STAGE COACH ANTIQUE MALL

(formerly White Pillars Antiques)

7525 East Pike
Norwich, OH 43767
614/872-3720

MANY DEALERS. . .

PLENTY OF PARKING. . .

WIDE SELECTION OF GLASS
AND POTTERY
FURNITURE AND
GENERAL LINE!

BUY and SELL

OPEN YEAR ROUND
Weekdays - 10 AM - 5:30 PM
Sunday - 12 noon - 5:30 PM
Summer Evening Hours - by Chance!

Located 9 miles E. of Zanesville, OH, on I-70 to Norwich Exit No. 164 - then ½ mile W. on Route 40.

DEALERS DIRECTORY

When Writing To
Dealers Please
Include SASE

<p>DEL'S DOING 10327 Main, Box 188 Richmond, Ill. 60071 Daily 10-5 815-678-4219 Cambridge - Heisey - Furniture - Jewelry</p>		<p>CHARLES MIKULIK Box 416 Elizabeth, N.J. 07207 — COLLECTOR — Always paying good prices for CAMBRIDGE CAPRICE in all colors 201-688-1141 CARRY MOST TYPES OF ANTIQUES</p>
<p>EVELYN M. ALLEN 135 Cynthia Street Heath, Ohio 43055 Mail Order & Shows 614-522-1635 SPECIALIZING IN CAMBRIDGE GLASS!</p>	<p>BENICIA ANTIQUE SHOP 305 First Street Benicia, California 94510 OPEN 11 AM - 5 PM Closed Monday Z. E. LOPES 707-745-0978</p>	
<p>DAVID NIELSEN 109 Lincolnway LaPorte, Indiana 46350 219-326-7276 CAMBRIDGE - HEISEY - GENERAL LINE</p>	<p>VISIT HISTORIC BENICIA and its 28 shops Off Interstate #80 North of San Francisco</p>	<p>ROLLING ACRES ANTIQUES 501 S. 9th St. Cambridge, Ohio 43725 Sandy Jenkins & Anne Ingram 614-432-2570 CAMBRIDGE & GENERAL LINE ANTIQUES</p>
<p>BERKELEY ANTIQUES 69 Berkeley St. Boston, MA 02116 George or Frank 617-426-1048 CAMBRIDGE, HEISEY, GENERAL LINE</p>	<p>ANDREJCAK'S ANTIQUES 14533 Bayes Ave. Lakewood, Ohio 44107 Joe & Karen Andrejcek 216-226-3417 SHOWS ONLY — CAMBRIDGE — FENTON — CHINA</p>	<p>A. SPRINGBORN 5434 Windridge Lane Orlando, Florida 32810 SHOP No. 34 — WEBSTER, FL Open Every Monday 305/298-3011</p>
<p>D & D ANTIQUES Columbus, Ohio DICK SLIFKO SHOWS ONLY</p>	<p>THE HITCHING POST 7467 S. R. 88 Ravenna, OH 44266 Ph. 216-296-3686 D. McDaniel CAMBRIDGE — HEISEY — GENERAL LINE</p>	<p>FINDER'S KEEPER'S ANTIQUES P.O. Box 303 P.O. Box 16023 Dayton, O. Columbus, O. 45401 43216 513-254-2937 614-885-2726 SPECIALIZING IN CAMBRIDGE GLASS!</p>
<p>THE GLASS CUPBOARD 39 Shire Oaks Drive Pittsford, New York 14534 Marcia Ellis 716-586-7596 CAMBRIDGE ONLY INQUIRIES INVITED</p>	<p>GEORGE HOFFMAN ANTIQUES 129 South 4th Street Newark, Ohio 43055 614-345-8021</p>	<p>SNYDER ANTIQUES P.O. Box 010 Gates Mills, Ohio 44040 SPECIALIZING IN CAMBRIDGE GLASS Mail Order, Shows 216-461-2110 By Appointment</p>
<p>GLASS RAINBOW of California P.O. Box 127 Elk Grove, Ca. 95624 Neil & Ervina McCartney 916-685-5485 Hours: 9 a.m.-4 p.m., 7 p.m.-9 p.m. By appointments, Shows</p>	<p>J & L GLASS Laws Antique Center, Manassas, VA 22111 and 10629 Main St. Fairfax, VA 22030 703/273-8579 BUY & SELL: Depression, Cambridge, Heisey, Duncan & Fostoria Glass</p>	<p>1886 HOUSE East Schodack, N.Y. 12063 MAIL and SHOWS Laurie Cruise 518-477-5895 CAMBRIDGE - MORITAKE - AZALEA - D.G.</p>
<p>joyce's antiques Bought and Sold Specializing in HEISEY • CAMBRIDGE • VERLYS • AMERICAN GLASS P O Box 114 Albertson N Y 11507 (516) 499-3396</p>	<p>THE ANTIQUERY 42 E. Main St., St. Rt. 40 New Concord, Ohio 43762 Ph. 614-432-4483 Richard Bennett Specializing in Cambridge Glass</p>	<p><i>YOU CAN ADVERTISE YOUR ANTIQUESHOP HERE!</i> 1 inch - \$6 for six months</p>
<p>THE MAGICAL UNICORN 40 E. Main St. New Concord, Ohio 43762 Ph. 614-826-7140 Yvonne Gordon Open 11-5 Weekdays Anytime, Chance or Appointment</p>	<p>AL STEELE Westerville, Ohio 614-882-6483 or 614-882-7124 Mail Orders and Shows Only HEISEY — CAMBRIDGE — PATTERN GLASS</p>	<p>BETTY'S ICE HOUSE ANTIQUES 517 Fulton Street Wausau, Wisconsin 54401 Quality Antiques Cambridge - Heisey - General Line Betty R. Puestow Hours 1-5 Daily 715-848-7145 or by appointment</p>
<p>MARGARET LANE ANTIQUES 2 E. Main St., New Concord, OH 43762 Lynn Welker 614/826-4418 CAMBRIDGE GLASS MATCHING SERVICE Hours Mon.-Fri. 1-5 PM or by Appointment</p>	<p>SHIRLEY S. LAPOUCEUR Antiques and Collectibles Specializing in Cambridge Glass BY APPOINTMENT 7597 Daphne Drive 315-458-5297 No., Syracuse, NY 13212</p>	<p>GREEN ACRES FARM Antiques, Crystal Glass & Collectibles Sat. & Sun. 1-7 PM (614) 927-1882 2678 Hazelton Etna Road (State Route 310 North) Pataskala, Ohio 43062</p>



National Cambridge Collectors, Inc.

P. O. Box 416, Cambridge, Ohio 43725

A nonprofit organization dedicated to the preservation and study of Cambridge Glass

The National Cambridge Collectors, Inc. is proud to present an original film produced by the Cambridge Glass Co. in the 1950's. The film is entitled THE CRYSTAL LADY. It is a most interesting film and includes pictures of the factory and the workers making the fine Cambridge Glass. It is a 16mm sound movie that runs about 40 minutes.

The following 5 slide presentations are now available:

No. 1 is on the Display rooms and close-up shots of particular pieces of interest.

No. 2 is of different stems made by Cambridge Glass Co.

No. 3 covers Cambridge Glass candlesticks.

No. 4 is of Cambridge colors.

No. 5 presents Cambridge Glass figurals.

These 5 presentations are available in Kodak carousel slide trays and are supplied with narratives on each slide.

NOTE: NCC Study Clubs may use these presentations free of charge except for postage to and from destination.

TO RESERVE PLEASE CHECK THE ITEM (OR ITEMS) DESIRED.

MAKE CHECK PAYABLE TO: NATIONAL CAMBRIDGE COLLECTORS, INC.

THE CRYSTAL LADY and all 5 slide presentations have a deposit fee of \$25 and a rental fee of \$15 which will be deducted from the deposit fee.

THE CRYSTAL LADY

No. 1 Display rooms and particular pieces

No. 2 Stems

No. 3 Candlesticks

No. 4 Colors

No. 5 Figurals

TOTAL DEPOSIT FEE:

NAME OF ORGANIZATION: _____

ADDRESS: _____

CITY & STATE: _____ ZIP _____

DATE NEEDED: _____

FIRST-CLASS MAIL
U.S. POSTAGE
PAID

Cambridge, Ohio
43725
Permit No. 1

National Cambridge Collectors, Inc.
P. O. Box 416 Cambridge, Ohio 43725

FIRST CLASS MAIL

**QUARTERLY MEETING
NOTICE
SUNDAY, SEPT. 11, 1983**

**WATCH
THIS SPACE
NEXT MONTH
FOR
DETAILS AND
DIRECTIONS**