

Cambridge



Crystal Ball

ISSUE NO. 125

SEPTEMBER 1983

Published monthly by the NATIONAL CAMBRIDGE COLLECTORS, Inc.
To encourage and to report the discovery of the elegant and boundless product
of the Cambridge Glass Company, Cambridge, Ohio

Thoughts from the President.

Well, here it is, back to school time once again, for some of our younger members at least. Oh, how I wish I could join them! I can remember the dreadful thought of summer being over and having to return to school for another nine months . . . well, I realize now that it was not nearly so dreadful as having to get up every morning for that "time to go back to work again" feeling. The "back to school" only lasted for 18 to 20 years, but this other thing lasts for 45 to 50 years . . . if you are lucky!

Well anyway, it's September already, and as we mentioned in last month's CRYSTAL BALL, we're going to have a September PICNIC instead of that dreary August Quarterly Meeting.

It will be an all day affair! We've planned a little Swap Meet to begin about 10 a.m.; Picnic Lunch from about 12 noon to 1 p.m.; Quarterly Meeting is scheduled to begin at approximately 1 p.m.; and all of this will be followed with some entertainment (if my daughter Lynn doesn't change her mind).

Everyone needs to bring a dish (filled with meat, vegetable, dessert, etc.) large enough to feed your family. Also be sure to bring your

own table service! The Club will furnish the drinks (iced tea, koolaide, coffee, or whatever). NO ALCOHOLIC beverages are permitted in the Park. . . sorry about that!

The Swap Meet is not going to be anything extravagant. Those of you who wish to participate may start at 10 a.m. and stay set-up as long as you wish. We're calling this a swap meet. . . but you can sell if you so desire! Please, just enough items to maybe fill a card table, no crates of glass spread all over the Park! We think this should be fun for everyone. Many people have already indicated that they like the idea.

We will have someone at the Park early to reserve a Shelter for us. We'll attach a large N.C.C. logo sign to the Shelter so you will be able to find us. I'm not too familiar with where the Cambridge City Park is myself . . . so look on page 16 for a map and further directions. In case you've forgotten, the date for this family affair is Sunday, SEPTEMBER 11th!

For those of you who haven't sent in your Cup Plate order. . . better do so quickly! The color editions in this series are going to be much more limited than the crystal. We are ordering less of each so we can move this series along a little more quickly. We hope to have them at two to three month intervals.

If you will check the list of Officers & Chairpersons appearing on page 2, you will find

continued on page 2.

MEMBERSHIP RENEWAL NOTICE

If the date on your
address label is - -

9 - 83

This is your LAST ISSUE of the CRYSTAL BALL.

Please renew NOW!

CAMBRIDGE CRYSTAL BALL

Official publication of National Cambridge Collectors, Inc., a non-profit corporation with tax exempt status. Published once a month for the benefit of its members.

Membership is available for individual members at \$13 per year and additional members (12 years of age and residing in the same household) at \$3 each. All members have voting rights, but only one *Crystal Ball* will be mailed per household.

Back issues of the *Crystal Ball* are available (beginning with Issue No. 1, May 1973) for members only. Cost: \$.60 each or 12 issues for \$7.

1983-84 OFFICERS & COMMITTEE CHAIRPERSONS

PRESIDENT	Willard Kolb
VICE-PRESIDENT	Josephine Barstow
SECRETARY	Janice Hughes
TREASURER	William Smith
SERGEANT-AT-ARMS	Don Armbrecht

BOOK SALES	Billy Harbaugh & Jo Barstow
BUDGET & FINANCE	David Rankin
BY-LAWS	David Rankin
CONVENTION	Josephine Barstow
MEMBERSHIP	Phyllis Smith
MUSEUM	Billy Harbaugh
PROGRAM & ENTERTAINMENT	Frank Wollenhaupt
PROJECT	Willard Kolb
PUBLIC RELATIONS	William Smith
PUBLICITY	Joseph Andrejcek

1984 AUCTION	Lynn Welker
1984 ANTIQUE SHOW	Joy McFadden

CRYSTAL BALL EDITOR Phyllis Smith

CLASSIFIED ADVERTISING RATES

5c per word \$1.00 minimum
We cannot mix type size in classified advertisements. Abbreviations and initials will count as words. Payment in full MUST accompany all ads.

DISPLAY ADVERTISING RATES

	Members	Non-Members
1/8 page	\$ 4.00	\$ 6.00
1/4 page	7.00	10.00
1/2 page	12.00	18.00
3/4 page	17.00	25.00
Full page	22.00	33.00

DEALERS DIRECTORY

1" ad (5 line maximum) \$6.00 for 6 months

Cambridge *Crystal Ball* assumes no responsibility for items advertised and will not be responsible for error in price, description or other information.

Advertising copy, articles, and club news and notices must be in our hands by the 10th of each month to assure publication in our next issue. Advertisements containing reproductions will not knowingly be accepted unless clearly stated.

Opinions or information stated in any signed article or letter printed in the *Crystal Ball* are those of the writer only and may or may not agree with National Cambridge Collectors, Inc. The editor reserves the right to refuse or edit material submitted for publication to conform to the editorial style of the *Crystal Ball*.

PLEASE ADDRESS ALL CORRESPONDENCE TO
National Cambridge Collectors, Inc.
P.O. Box 416
Cambridge, Ohio 43725

PRESIDENT: Willard Kolb	614/695-0695
SECRETARY: Janice Hughes	614/432-7823
EDITOR: Phyllis Smith	513/323-3888

PLEASE NOTIFY US IMMEDIATELY OF ANY CHANGE IN YOUR ADDRESS

Please enclose a self-addressed stamped envelope when requesting information!!

Thoughts. . . . continued from page 1

that everyone is the same as last year with the exception of the line that reads **CRYSTAL BALL Editor. . . . Phyllis Smith.** This is not a new addition, just a renewed one! What happened was that Janice and I ran out of material and we gave up what we called "Editing" (and some people called other things), and told Phyllis her vacation was over! Thanks Phyllis for accepting the editorship again, and thanks to the officers and chairpersons for accepting their responsibilities for another year.

Again, if any of you can help financially with the MUSEUM Improvement Project, we certainly would appreciate your support. We want to get started on this project as soon as possible. Thanks to all of you who have already helped!

Don't forget - **SUNDAY, SEPTEMBER 11TH**
Cambridge City Park - beginning at 10 AM

Hope to see you all there!

WILLARD

WE GET LETTERS

Enjoy the newsletter so very much. Is there a possibility of any other members in the Grand Junction, CO area on your mailing list?

Barbara Grandbauche

Club member Gladys Nelson, of Oakland, CA would like to correspond with other members who have an interest in Cambridge opaques (crown tuscan, jade, ivory, helio, etc.).

Editors Note: If you are interested in corresponding with either of the members mentioned above, please write to them at: P.O. Box 416, Cambridge, OH 43725. All letters will be immediately forwarded to them and then you will hear from them directly. It is the policy of N.C.C. to not reveal any members home address without their written permission!

GLASS INSPECTOR MUST HAVE KEEN EYES!

by JOYCE TORBERT

Ever wonder what all a glass inspector is looking for as they inspect a piece of glass? Well, at the Cambridge Glass Company in Cambridge, OH (1901-1958), they had to look for over 45 different items.

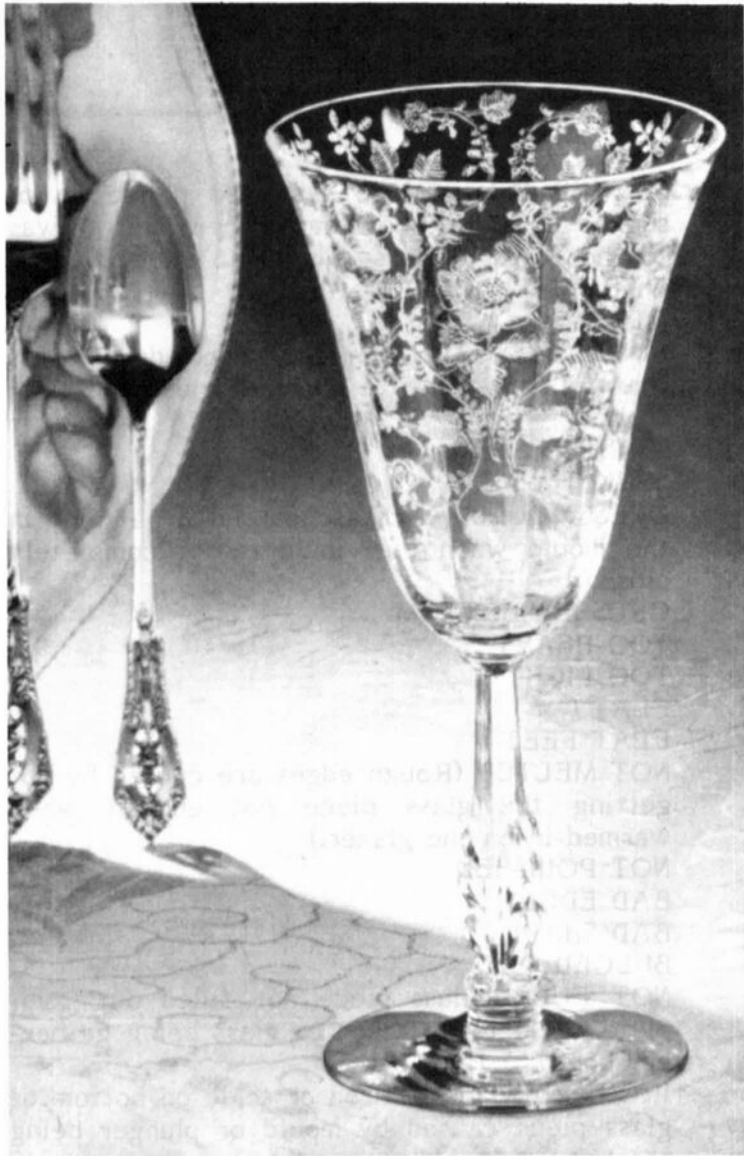
The following list represents the areas that were inspected (where applicable), according to a Cambridge Glass Company inspection form recently acquired by the **Degenhart Glass Museum** of Cambridge, OH.

The explanation of some of the terms were derived with the assistance of Bernard C. Boyd and Sidney Garrett.

CRACKED
CRACKED FOOT
CRACKED HANDLE
CHIPPED EDGES
CHIPPED BOTTOM
CROOKED ()
CROOKED HANDLE
CROOKED KNOB
CRIZZLED (Very fine surface cracks....with spider web effect....caused by the mould or plunger not being hot enough. Crizzle marks are not cracks running through the entire depth of the glass.)
CORDY (Fine wavy or distorted lines caused by poor quality glass that has a different density than the rest of the piece.)
DIRTY (Rough places caused by flecks of dust or dirt in the mould. Also caused by impurities on tools, such as, oil, beeswax or dirt.)
SEEDY (Minute bubbles caused by impurities in glass. Occurs when glass batch has not been cooked long enough to remove impure agents.)
STONY (Stones are caused by small chunks of lime or other impurities that were not dissolved or melted during the cooking of the glass batch.)
STUCK (A rough place caused by hitting the glass piece on something when warming-in or reheating the piece.)
SUNK (Glass piece has fallen out of shape. This is caused by the piece being too hot when turned out of mould.)

SUCKED (Glass piece has been pulled up or sucked up and out of shape when plunger was too hot causing glass to stick to plunger.)
WARPED
MISFITS
FINE GLASS (Tiny particles of powdered glass that fall down onto a piece of glass and stick to it.)
TWISTED STEM
SUNK TOP
OPEN MOULD (A crease caused by a joint in the mould when the mould is not completely closed.)
CRUSHED BOTTOM
TOO HEAVY
TOO LIGHT
FLAT ()
FLAT FEET
NOT MELTED (Rough edges are caused by not getting the glass piece hot enough when warmed-in on the glazer.)
NOT POLISHED
BAD EDGES
BAD SHAPE
BULGED OUT
NOT FULL (Glass piece not filled out completely due to a gather or glass being gathered short.)
IRON ON BOTTOM (Iron or scale on bottom of glass piece caused by mould or plunger being too hot.)
SHEAR MARKS (A rough, irregular, crease caused by the improper cutting of the gather of glass by the presser.)
ROCKY (Glass piece rocks on its foot or base. May have been caused by too quick a removal from the mould.)
PRESSED UP (Appearance of a thin edge of glass pressed up between the plunger and the ring.)
PRESSED OVER (Appearance of a thin edge of glass between ring and mould caused by the presser cutting the gather too heavy.)
MARKED FROM TOOLS
WAVY
BLISTERED (An unwanted bubble or air trap caused from air getting into the glass while being gathered.)
BAD BOTTOMS
RUN DOWN (Same as SUNK.)

continued on page 11



where elegance is good taste . . .

Cambridge etched crystal

Do you aspire to be a perfect hostess . . . with the finest of table appointments for your family and guests? Then, please do consider Cambridge Etched Crystal. Of beauty rare, this exquisite American handmade glassware is truly the crowning touch for festive settings, and the most appreciated of bridal gifts. The delicate lace-like designs are etched on clearest crystal and highlighted for extra brilliance. Choose from eight exclusive open stock patterns, available in complete settings, moderately priced.



Cambridge Bridal Place Setting

Goblet, Sherbet, Cocktail and Salad Plate in your bride's chosen Cambridge Etching. Attractively packaged for convenient giving, and for protection too.

The Cambridge Glass Company, Cambridge, Ohio



ROSELYN



3900/116
80 oz. Ball Jug



P. 101
32 oz. Cocktail Shaker



P. 360
Salt & Pepper
w/Chrome Top



P. 293
6 oz. Oil



3400/52
5 in. Butter & Cover

The advertisement shown at left is from a copy of the November 1950 issue of the "Ladies Home Journal." Note the Roselyn etching on the goblet, and the "Rosepoint" pattern in Wallace sterling in the background.

ROSELYN

by MARK NYE

Roselyn is a late etching. . . first appearing on pages of the 1949-53 N.C.C. Cambridge Glass Company Catalog reprint. These pages indicate that production began sometime during the last half of 1949 or the first half of 1950.

Apparently this etching remained as a stock pattern, until the time of the initial plant closing in 1954, as it is listed on the October 1953 Cambridge Glass Company price list. Evidently Roselyn was a casualty of the closing. The 1956 price list indicates this etching was available only on stemware, by special order or matching service.

Including stemware, the 1949-53 Catalog reprint shows 50 items with the Roselyn etching, and this did not represent the entire line. . . . the October 1953 price list contained 63 listings. Seemingly the only stemware used in conjunction with this etching was the #3779 stem, as none other is listed or pictured.

No dinner plate is included in the available listings, but a cup and saucer, bread and butter plate, and a salad plate were produced. The balance of the line consisted of accessory, serving and decorative items. As far as I can determine, Roselyn was etched on crystal blanks only.

The majority of etched Roselyn will be found on four blanks: #3400; #3900 (Corinth); Pristine; and the #3779 stem line.

A full line of stemware was produced, ranging in size from the 1 oz. cordial, to two styles of goblets, both low and tall.

Fifteen of the 63 items on the 1953 price list utilize the #3900 blanks. These included: three jugs (#3900/115/116/118); full and individual size creamers and sugars; three styles of celery and relish dishes (#3900/120/125/126); and the #3900 ice pail with handle.

From the Pristine line came the P290 oil bottle, the P306 candy box and cover, and the P101 32 oz. cocktail shaker. There were also creamers and sugars, mayonnaise sets, and shakers included from this line.

Blanks from the #3400 line were used for the

butter dish, three bowls (#3400/4/48/160), two relish dishes, and two bonbons.

While not indicated as such in the 1953 price list or in the 1949-53 Catalog reprint, the bread and butter and the salad plates, used for the Roselyn etching, were from the #3400 line (#3400/1174/1176 respectively). When it came time to adapt the Roselyn etching to these two plates, Cambridge elected to use a border pattern with a single flower in the center of the plate. To me, this represents the most attractive use of this etching.

The cup and saucer used for the Roselyn etching is #1170, and is described as a square saucer and round cup. This number also appears in the 1953 price list under the listing for Pristine, and for the Daffodil etching as well. This is not the regular Pristine cup and saucer, and since no picture is provided. . . nor have I seen a Roselyn etched cup and saucer, I have not been able to determine what blank or blanks these are.

Of course, there are vases and candlesticks etched Roselyn, but not to the extent found with other older etchings. Included in this group are: four vases (#274, #278, #1237, and #1238); the one and two-lite keyhole candlesticks (#646, #647); along with another old friend, #1338, constitute this grouping.

Three items shared the honor of being the most expensive piece with Roselyn etching, in October 1953. The #3900/120 12" 5-part celery and relish, the Pristine P101 cocktail shaker, and the #3900/116 80 oz. ball jug, were all priced at \$105 per dozen, or \$8.75 each. The least expensive was a bread and butter plate at \$2 while stemware was priced at \$27 per dozen, regardless of the piece.

Very little Roselyn is seen in the market place today and this is probably due to two reasons. First, the quantity produced was most likely never very large, and second, being a pattern of the early 1950s, no doubt much of what was sold still remains in china cabinets across the country.

Editor's Note: This article is the sixth of a series of articles by Mark Nye, dealing with the "Cambridge Girls", ie those etchings bearing the name of a girl.

Roselyn



3779
9 oz. Tall Goblet



3779
6 oz. Tall Sherbet



3779
9 oz. Low Goblet



3779
6 oz. Low Sherbet



3779
3 oz. Cocktail



3779
2½ oz. Wine



3779
4½ oz. Oyster Cocktail



3779
4½ oz. Claret



3779
1 oz. Cordial



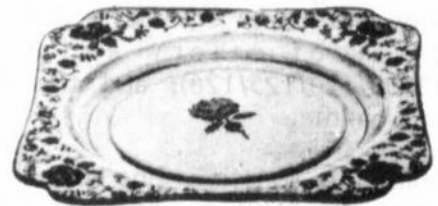
3779
12 oz. Ftd. Ice Tea



3779
5 oz. Ftd. Tumbler

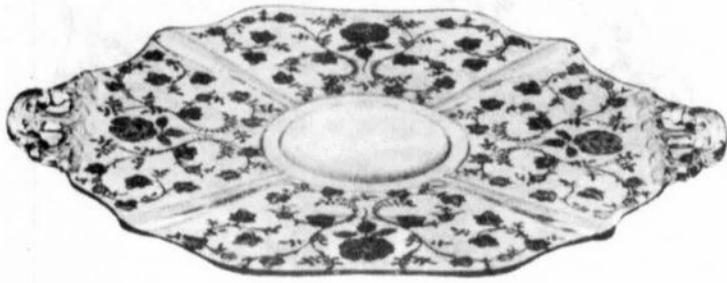


1174
6 in. B & B Plate. Square

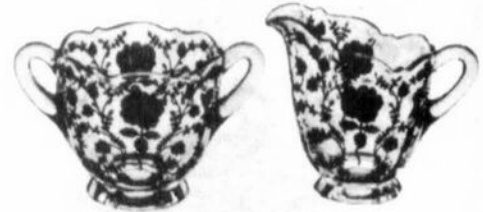


1176
8½ in. Salad Plate. Square

Roselyn



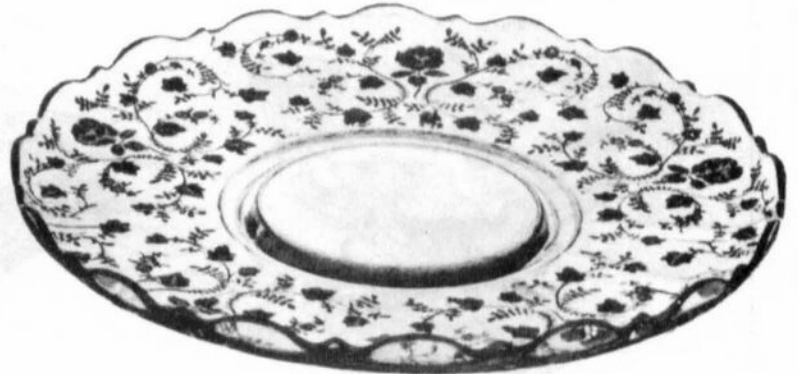
3400/35
11 in. 2 Hdl. Plate



3900/41
Sugar & Cream



3400/90
6 in. 2 part Relish



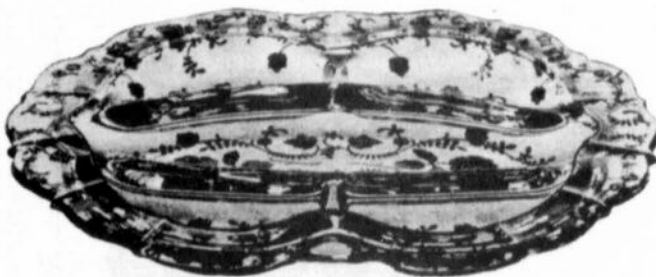
3900/166
14 in. Plate, r.e.



3900/125
9 in. 3 part Celery & Relish



3400/91
8 in. 3 part Relish



3900/120
12 in. 5 part Celery & Relish



3900/126
12 in. 3 part Celery & Relish



P. 248
11 in. Celery Tray



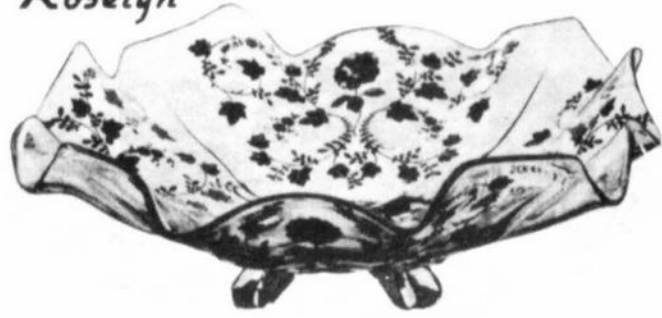
The Cambridge Glass Company



Roselyn



646
5 in. Candlestick



3400/48
11 in. 4 Ftd. Bowl, Fancy Edge



647
6 in. 2 lite Candlestick



3400/160
12 in. 4 Ftd. Bowl, oblong



1338
6 in. 3 lite Candlestick



3400/4
12 in. 4 Ftd. Bowl, flared



P. 533
3 pc. Mayonnaise Set



P. 1491
4 pc. Twin Salad Dressing Set

Cambridge, Ohio - - - U. S. A.

Ten Years Ago In The Crystal Ball

ISSUE NO. 5 SEPTEMBER 1973

N.C.C. Officers for the 1973-74 year were: President: Charles Upton; Vice-President: Ruth Forsythe; Secretary: Richard Pavlov; and Treasurer: John Wolfe.

Membership stood at 215 as reported by President Upton. He also outlined the requirements for Study Group affiliation.

Guernsey County was celebrating its 175th Anniversary, and as a part of that celebration a plaque was erected on the site of "Coach House Manor" which read in part, "formerly the A. J. Bennett Estate, founder of world famous Cambridge Glass. Built in 1907." This home is located at the corner of North 7th St. and Wall Ave. Drive by next time you are in Cambridge. The sign is still there . . . sadly, the residence has been turned into apartments.

There were no advertisements for glass in this issue, so we sneaked a peek back to ISSUE #1 (May 1973), and found the following items for sale. A pair of 9-1/2" rubina candlesticks for \$100; heatherbloom cup and saucer \$20; a 159 page, original Cambridge Glass Company catalog, with gray cover, believed to be 1952, \$60; crown tuscan 8-1/2" Pillow vase \$55; rubina Honeycomb bowls, one at \$90, and one at \$95; crystal 3-1/2" swan \$10; crystal Caprice six piece water set (pitcher #183, tumblers #9) for \$45.

Bob Coyle's "Collectors Corner" article revealed that Mrs. Paulson had added the following to her collection . . . 13" moonlight blue Lady flower frog, and a three piece console set in heatherbloom with Portia etching and gold trim. Other items reported as having been found were: Georgian tumbler in heatherboom; Georgian candy dish in carmen; crown tuscan Flying Lady bowl with painted decoration; carmen Cut Wild Rose punch bowl and ten cups; five pieces of Mardi Gras; and a second Lady flower frog in moonlight blue. Bob also reported that the Welkers had just published their Color Book II.

This issue was only eight pages in length, but it contained articles by: Jabe Tarter; John Wolfe; and Ruth Forsythe; along with those already mentioned.

EDITOR'S NOTE: For those of you who have

not purchased the back issues of the CRYSTAL BALL this is just a gentle reminder that you really should. Each issue contains some information that is not available any place else. All back issues are available. Why not order the ones you don't have TODAY? Information on cost and how to order may be found on page 2 of this issue.

HOW CAN WE HELP YOU?

When you became a member of N.C.C., we feel sure that you had a definite reason for doing so . . . undoubtedly you had in mind that by becoming a member of a national organization created for the purpose of studying Cambridge Glass, that you would soon be informed about your particular interest!

Has this happened? Have you seen an article in the CRYSTAL BALL that addressed itself to your particular interest? If not, WHY NOT?

The only way we have of knowing what your particular interest is if you write and tell us. Articles have been written over the past ten years on so many different subjects, that we sometimes wonder "what to write about next, that everyone hasn't already read." Those of us who have been members from the very beginning sometimes forget that not all of you have all of the back issues of the CRYSTAL BALL and therefore, you have not "read it all before."

It is our hope that we will hear from you . . . both old and new members . . . and that you will tell us what you would like to see in this newsletter. A very few of you have already written and we have tried (and will continue trying) to fill your requests.

Of course, we always have a few complaints about the amount of space allotted to reports from our Study Groups, etc., but since this is a club "newsletter" and the majority of the membership seems to enjoy reading about the finds of other members, we do not feel that we can leave these reports out completely.

This is YOUR newsletter . . . won't you please write to us and let us know what you think should be done to improve it so that it will meet your needs, as well as those of other members.

Thanks for your consideration in this matter!

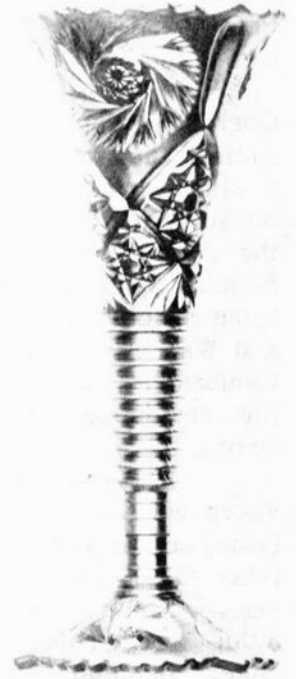
Phyllis Smith, Editor



12 in. Orange Bowl and Foot.



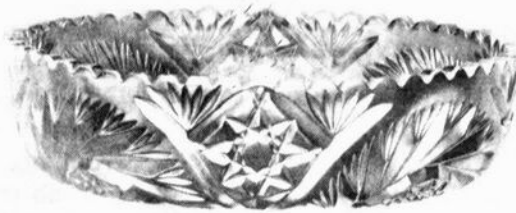
Three-piece Epergne.



14 in. Two-piece Vase.



Two-piece Epergne.



12 in. Fruit Bowl.



9 in. Sweet Pea Vase.

CAPRICE SLIDE PROGRAM

The South Florida Everglades Study Group is pleased to announce the second edition of its "CAMBRIDGE CAPRICE PATTERN" slide program. Eleven slides have been added, as well as redoing others, to include 20 additional pieces of Caprice not shown in the earlier version. The complete program now contains 115 slides and shows some 170 Caprice items, plus combination sets. Caprice was first introduced by the Cambridge Glass Company in 1936 and was continued in production until the final plant closing in 1958.

All slides are in color with the majority of the items shown in crystal. Each slide has its own narrative giving pertinent information regarding the item(s) being shown. This includes production dates, colors, and other information of interest. Top loading Kodak carousels are used.

Due to the length of the complete program, three options are now available.

1. As before, the complete program is available and will take 1-1/2 to 2 hours to present. The slides, showing Caprice in item number sequence, are evenly divided between two carousels to allow for a break during the program.

2. The complete program can be rented in two parts - one carousel at a time (each will contain approximately 67 slides). At least one hour should be allotted for showing each carousel. This version is designed for clubs or study groups who might wish to extend the program over two monthly meetings.

3. A 50 slide version containing the basic Caprice pattern plus rare or unusual items has been prepared and is available for those who do not wish the in depth, complete program. All of the slides in this version are duplicates of those contained in the complete version. One hour or less will be required for the showing.

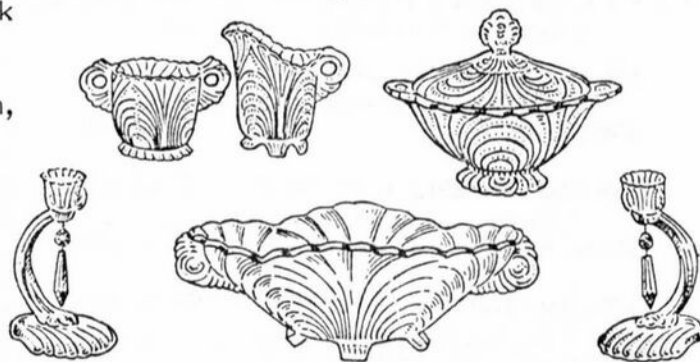
All showing times will depend on the amount of discussion that occurs within the viewing group.

The programs are available for rental by any interested group or individual. All proceeds

are to be donated to the National Cambridge Collectors Museum.

The objectives of these programs are: 1) to make available, at reasonable cost, program material for clubs; 2) to have available, a tool for the study of Caprice . . . many of the items shown are not often seen and represent over five years of collecting by their owner; and 3) to raise money for the N.C.C. Museum. Thus, the rental fee for each of the three program options has been set at \$25 plus return shipping charges.

For additional information or to rent any of the programs, write to: **South Florida Everglades Study Group**, 10045 SW 12th Terrace, Miami, FL 33174. It is recommended that the program of your choice be reserved well in advance of the date you wish to show it.



GLASS INSPECTORS continued from page 3

ASBESTOS DIRT (Asbestos stuck to glass. Caused by putting the object on asbestos paper when it was too hot.)

MELTED TOO MUCH (Glass piece became lopsided. Caused by leaving piece on glazer too long and thus getting too hot. Could also refer to color burn out.)

PINCHED (A squeezed glass piece caused by too much pressure having been exerted by the pinchers.....tools that hold a hot glass piece as it is carried from mould to Lehr.)

EDITOR'S NOTE: Joyce Torbert is Membership Secretary and HEARTBEAT Newsletter Editor for the Degenhart Glass Museum in Cambridge, OH. This article first appeared in the August 1983 issue of HEARTBEAT. Anyone interested in receiving additional information concerning membership in "FRIENDS OF DEGENHART" or the Degenhart Glass Museum may write to: Joyce Torbert, c/o Degenhart Glass Museum, P.O.Box 186, Dept. NCC, Cambridge, OH 43725. Please enclosed a SASE.

BOOKS FOR SALE

All of the available reference books relating to Cambridge Glass can be ordered directly from the Club.

Address your orders for any of the following to:

BOOKS

National Cambridge Collectors, Inc.
P.O. Box 416
Cambridge, Ohio 43725

Please add \$1.00 (P & I) on each book order.
(Not required for Price List only orders)

Ohio residents please add 6% State Sales Tax.

by National Cambridge Collectors, Inc.

1956-1958 CAMBRIDGE GLASS CO. CATALOG REPRINT
(164 page reprint of original catalog)
Paperback \$6.95

1949-1953 CAMBRIDGE GLASS CO. CATALOG REPRINT
(300 page reprint of original catalog)
Hardbound with 1983 Price Guide \$14.95

1930-1934 CAMBRIDGE GLASS CO. CATALOG REPRINT
(250 page reprint of original catalog)
Hardbound with 1982 Price Guide \$14.95

1983 PRICE GUIDE
for 1949-53 catalog reprint \$2.25 PP

1982 PRICE GUIDE
for 1930-34 catalog reprint \$2.25 PP

by Mary, Lyle, and Lynn Welker

CAMBRIDGE GLASS CO.
(120 pages of reprint from 8 old catalogs) \$6.95

CAMBRIDGE GLASS CO. BOOK II
(119 pages of reprint from old catalogs) \$6.95

CAMBRIDGE, OHIO GLASS IN COLOR II
(15 color plates w/descriptions and notes) \$5.95

by Harold and Judy Bennett

1903 CAMBRIDGE GLASS CO. CATALOG REPRINT
(106 page reprint of an original catalog) \$7.50

STAGE COACH ANTIQUE MALL

(formerly White Pillars Antiques)

7525 East Pike
Norwich, OH 43767
614/872-3720

MANY DEALERS. . .

PLENTY OF PARKING. . .

WIDE SELECTION OF GLASS

AND POTTERY

FURNITURE AND

GENERAL LINE!

BUY and SELL

OPEN YEAR ROUND

Weekdays - 10 AM - 5:30 PM

Sunday - 12 noon - 5:30 PM

Summer Evening Hours - by Chance!

Located 9 miles E. of Zanesville, OH, on I-70 to Norwich Exit No. 164 - then 1/2 mile W. on Route 40.

VICKI SANSOM

5825 Satinwood Drive
Columbus, OH 43229
614/436-4896

Rosepoint #3121 Cocktails 8/\$200
Rosepoint Cocktail Shaker \$80
13" tall, holds 48 oz., a few nicks on rim,
chrome top w/side angled spout
Carmel Slag Animals - complete set 18/\$750
Red "American Sweetheart" Depression
Glass Creamer \$75

POSTAGE & INSURANCE EXTRA
Will not ship Slag Animals!



3400/1181
6 in. 2 Hdl. Bonbon Plate

Roselyn

"If you wish your merit to be known,
acknowledge that of other people."
ORIENTAL PROVERB

Study Club News

STUDY GROUP #5 - SOUTHERN CALIFORNIA "CALIFORNIA CAMBRIDGE COLLECTORS"

The California Cambridge Collectors Study Group held a potluck dinner meeting on July 17th, in the home of Beverley Hanson, with eight members present. This was a social meeting, so we did not discuss any particular topic.

Our "Show & Tell" session included several nice items of Cambridge glass. Ron Rockafellow displayed several nude stems which included an amethyst champagne, mandarin gold wine, crystal and ebony wine, and a royal blue comport with crystal stem. He also had some cordials, wines and sherbets with amber tops on the crystal pressed Rosepoint stems, and a carmen keyhole stemmed ivy ball which he had picked up at the bargain price of \$5.

Betty Wanser shared a moonlight blue Caprice relish, and Betty Losch had both an amethyst and an amber #1369 Melon shaped 36 oz. decanter set in an unusual locking Farberware frame and tray. My contribution was a 12" azurite vase with gold trim.

The raffle prize was a crystal Pristine cocktail mixer.

Our next meeting will be hosted by Ron Rockafellow. If any southern California Cambridge collectors are interested in joining our group, we encourage you to write to: Bill Losch, P. O. Box 3327, Long Beach, CA 90803.

submitted by Joan McDowell

STUDY GROUP #7 - EASTERN OHIO "THE CAMBRIDGE BUFFS"

The Cambridge Buffs Study Group met for a Barbecue picnic in the home of Charles and Mary Alice Upton, on July 31st. There were eleven members and five guests present.

Slides of the color plates to be used in the new N.C.C. Color book were shown so that we can help with the pricing for the price guide.

"Show & Tell" items included: a carmen Cambridge Square bowl with crystal stem and

foot; Near Cut creamer and sugar #2626; #3400 sugar in experimental green color; and a #400 ball bottom 2 oz. tumbler in crystal.

submitted by Deanne Gray

— Classified —

BUYING: CAMBRIDGE Rosepoint; Heisey Rose and Orchid; Fostoria etched dinnerware; and Depression glass. Also glass figures and unusual glass pieces. Nadine Pankow, 207 South Oakwood, Willow Springs, IL 60480. 312/839-5231.

FOR SALE: CAMBRIDGE, Heisey, Duncan, and other fine glass. Send SASE for list. M & J Antiques, c/o Sir Speedy, 431 Main Street, Woburn, MA 01801.

WANTED: CAMBRIDGE colored bobèche. Any color, pairs please. Joyce Dawson, 2418 West Crestview, Roseburg, OR 97470. 503/672-4047.

EDITOR'S NOTE: In the August issue under CLASSIFIED, please note that the 7th and 8th ads should not have had a line between them. If you are interested in the items "For Sale" or "Wanted" in either of these ads, please contact: Caryl Halle, 2730 Inverness Road, Shaker Heights, OH 44122. 216/464-4726.

COMING NEXT MONTH



ETCHED CANDLELIGHT

Nice Article Watch For It!

MEMBERSHIP

Membership Contest now in progress —
Invite and sign-up new members now!

COLUMBUS, OHIO ANTIQU FLEA MARKET

Ohio State Fairgrounds - Outdoor Racetrack Show
Off I-71 Exit 17th Avenue - Columbus, Ohio

SEPTEMBER 18th

Sunday Only - 7 A.M. to 4 P.M.
Show Admission \$1.00 - Under 12 Free

**300 Quality Dealers with a Large
Variety of Antiques & Collectibles**

SELLING: Advertising Art Deco, books, Cambridge, clocks, coins, collectibles, Depression glass, dolls, Fiesta, fine early furniture, Heisey, jewelry, lamps, oak furniture, post cards, pottery, good primitives, tools and print shop items.

**Rain
or
Shine**

STOCKWELL PROMOTIONS

4214 North High Street
Columbus, Ohio 43214
(614) 267-8163/263-6830/885-2352

**Rain
or
Shine**

NEXT SHOWS: Oct. 2nd, Nov. 20th, Dec. 11th

COLUMBUS, OHIO ANTIQU FLEA MARKET

Ohio State Fairgrounds - Lausche Building
Off I-71 Exit 17th Avenue - Columbus, Ohio

OCTOBER 2nd

Sunday Only - 7 A.M. to 4 P.M.
Show Admission \$1.00 - Under 12 Free
150 QUALITY DEALERS

SELLING: Advertising Art Deco, books, Cambridge, clocks, coins, collectibles, Depression glass, dolls, Fiesta, fine early furniture, Heisey, jewelry, lamps, oak furniture, post cards, pottery, good primitives, tools and print shop items.

STOCKWELL PROMOTIONS

4214 North High Street
Columbus, Ohio 43214
(614) 267-8163/263-6830/885-2352

Bill and Phyllis Smith will be there representing N.C.C. this month!

NEXT SHOWS: Nov. 20th, Dec. 11th

DEALERS



DIRECTORY

NOTE: When writing to the Dealers listed here, please enclose a SASE!

<p>EVELYN M. ALLEN 135 Cynthia Street Heath, Ohio 43055 Mail Order & Shows 614-522-1635 SPECIALIZING IN CAMBRIDGE GLASS!</p>	<p>BENICIA ANTIQUE SHOP 305 First Street Benicia, California 94510 OPEN 11 AM - 5 PM Closed Monday Z. E. LOPES 707-745-0978</p>	<p>CHARLES MIKULIK Box 416 Elizabeth, N. J. 07207 — COLLECTOR — Always paying good prices for CAMBRIDGE CAPRICE in all colors 201-688-1144 CARRY MOST TYPES OF ANTIQUES</p>
<p>DEL'S DOING 10327 Main, Box 188 Richmond, Ill. 60071 Daily 10-5 815-678-4219 <i>Cambridge - Heisey - Furniture - Jewelry</i></p>	<p>VISIT HISTORIC BENICIA and its 28 shops Off Interstate #80 North of San Francisco</p>	
<p>BERKELEY ANTIQUES 69 Berkeley St. Boston, MA 02116 George or Frank 617-426-1048 CAMBRIDGE, HEISEY, GENERAL LINE</p>	<p>ANDREJCAK'S ANTIQUES 14533 Bayes Ave. Lakewood, Ohio 44107 Joe & Karen Andrejcek 216-226-3417 SHOWS ONLY — CAMBRIDGE — FENTON — CHINA</p>	<p>A. SPRINGBORN 5434 Windridge Lane Orlando, Florida 32810 SHOP No. 34 — WEBSTER, FL Open Every Monday 305/298-3011</p>
<p>D & D ANTIQUES Columbus, Ohio DICK SLIFKO SHOWS ONLY</p>	<p>THE HITCHING POST 7467 S. R. 88 Ravenna, OH 44266 Ph. 216-296-3686 D. McDaniel CAMBRIDGE — HEISEY — GENERAL LINE</p>	<p>FINDER'S KEEPER'S ANTIQUES P.O. Box 303 P.O. Box 16023 Dayton, O. Columbus, O. 45401 43216 513-254-2937 614-885-2726 SPECIALIZING IN CAMBRIDGE GLASS!</p>
<p>THE GLASS CUPBOARD 39 Shire Oaks Drive Pittsford, New York 14534 Marcia Ellis 716-586-7596 CAMBRIDGE ONLY INQUIRIES INVITED</p>	<p>GEORGE HOFFMAN ANTIQUES 129 South 4th Street Newark, Ohio 43055 614-345-8021</p>	<p>SNYDER ANTIQUES P.O. Box 010 Gates Mills, Ohio 44040 SPECIALIZING IN CAMBRIDGE GLASS Mail Order, Shows 216-461-2110 By Appointment</p>
<p>THE ANTIQUERY 42 E. Main St., St. Rt. 40 New Concord, Ohio 43762 Ph. 614-432-4483 Richard Bennett <i>Specializing in Cambridge Glass</i></p>	<p>J & L GLASS Laws Antique Center, Manassas, VA 22111 and 10629 Main St. Fairfax, VA 22030 703/273-8579 BUY & SELL: Depression, Cambridge, Heisey, Duncan & Fostoria Glass</p>	<p>1886 HOUSE East Schodack, N.Y. 12063 MAIL and SHOWS Laurie Cruise 518-477-5895 CAMBRIDGE - NORITAKE - AZALEA - D.G.</p>
<p>joyce's antiques Bought and Sold Specializing in HEISEY • CAMBRIDGE VERLYS • AMERICAN GLASS P O Box 114 Albertson N Y 11507 (516) 499-3396</p>	<p>GLASS RAINBOW of California P.O. Box 127 Elk Grove, Ca. 95624 Neil & Ervina McCartney 916-685-5485 Hours: 9 a.m.-4 p.m., 7 p.m.-9 p.m. By appointments, Shows</p>	<p>ROLLING ACRES ANTIQUES 501 S. 9th St. Cambridge, Ohio 43725 Sandy Jenkins & Anne Ingram 614-432-2570 CAMBRIDGE & GENERAL LINE ANTIQUES</p>
<p>THE MAGICAL UNICORN 40 E. Main St. New Concord, Ohio 43762 Ph. 614-826-7140 Yvonne Gordon Open 11-5 Weekdays Anytime, Chance or Appointment</p>	<p>AL STEELE Westerville, Ohio 614-882-6483 or 614-882-7124 Mail Orders and Shows Only HEISEY — CAMBRIDGE — PATTERN GLASS</p>	<p>BETTY'S ICE HOUSE ANTIQUES 517 Fulton Street Wausau, Wisconsin 54401 Quality Antiques Cambridge - Heisey - General Line Betty R. Puestow Hours 1-5 Daily 715-848-7145 or by appointment</p>
<p>MARGARET LANE ANTIQUES 2 E. Main St., New Concord, OH 43762 Lynn Welker 614/826-4418 CAMBRIDGE GLASS MATCHING SERVICE Hours Mon.-Fri. 1-5 PM or by Appointment</p>	<p>SHIRLEY S. LADOUCEUR Antiques and Collectibles Specializing in Cambridge Glass BY APPOINTMENT 7597 Daphne Drive 315-458-5297 No. Syracuse, NY 13212</p>	<p>GREEN ACRES FARM <i>Antiques, Crystal Glass & Collectibles</i> Sat. & Sun. 1-7 PM (614) 927-1882 2678 Hazelton Etna Road (State Route 310 North) Pataskala, Ohio 43062</p>

QUARTERLY MEETING NOTICE

SUNDAY, SEPT. 11, 1983

CAMBRIDGE CITY PARK
(see map for directions)

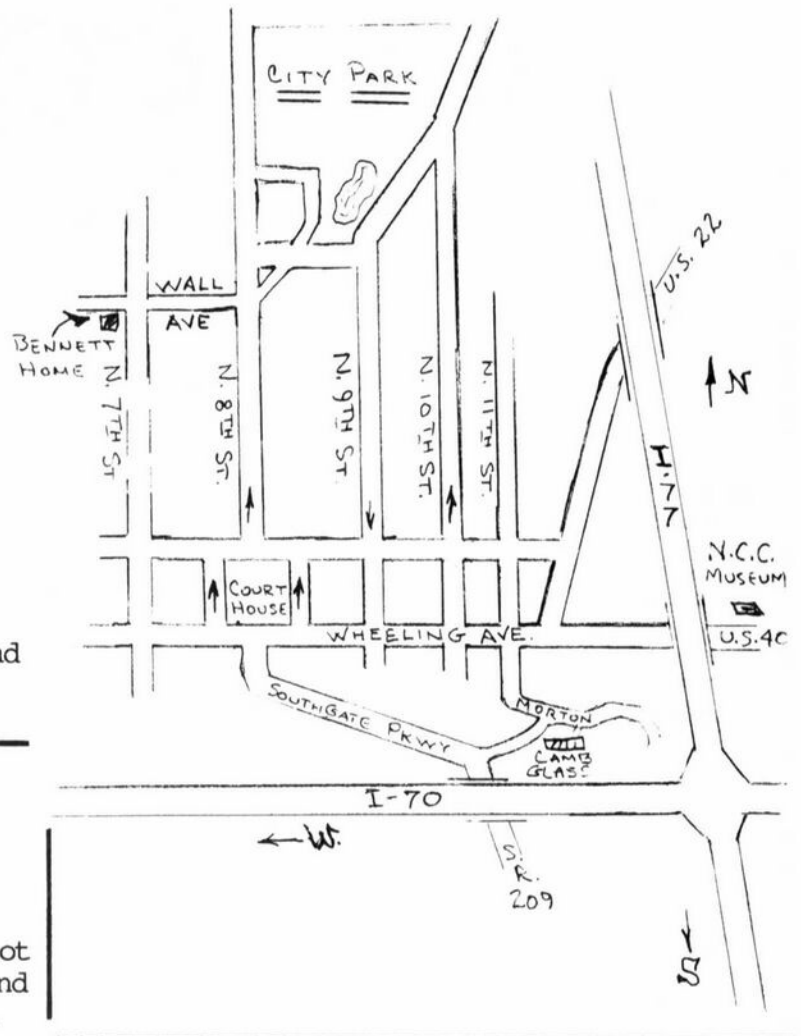
SWAP MEET beginning at 10 a.m.

PICNIC LUNCH . . 12 noon to 1 p.m.
(bring covered dish and table service)

QUARTERLY MEETING . . 1 p.m.

ENTERTAINMENT TO FOLLOW
. SEE YOU THERE!

For additional information, be sure to read
President Kolbs "Thoughts" on page 1.



VISIT YOUR MUSEUM

If you haven't been to the MUSEUM, why not
come on Saturday . . . visit the Museum and
take in the many Antique Shops in the area.



An inside view of the N.C.C. Museum.

HOURS:

Wednesday thru Sunday - 12:00 to 4:00 P.M.

Closed Monday & Tuesday

**Closed November, December, January
and February**

Museum Telephone Number — 614-432-4245

National Cambridge Collectors, Inc.
P.O. Box #416
Cambridge, Ohio 43725

FIRST-CLASS MAIL
U.S. POSTAGE
PAID
So. Vienna, Ohio
45369
Permit No. 15

FIRST CLASS MAIL