

Cambridge



Crystal Ball

ISSUE NO. 130

FEBRUARY 1984

Published monthly by the NATIONAL CAMBRIDGE COLLECTORS, Inc.
To encourage and to report the discovery of the elegant and boundless product
of the Cambridge Glass Company, Cambridge, Ohio

Thoughts from the President

It's February already? I'm still dating everything 1983! Probably the fact that I'm about a year behind in everything has something to do with that. Does it take you about half of the year to get accustomed to the new year?

Sometimes I sit and think about things that I did when I was younger, and for some reason in my dreams I just never had these problems. At work, for instance . . . you have a guy come in to buy something. You sit at the desk and make up his invoice, all the time thinking to yourself that you will fool this "dude" and get the date right, because all day you've been telling yourself that it is 1984, not 1983! Do you know what his first remark will be? "Hey, you dated that wrong. This is 1984, not 1983!" Do you know they are always right . . . "WHAT DO YOU CALL THAT?"

February, February, February! Let's see, what's happening this month? Oh yes, the "ANNUAL AUCTION." I knew there was something we needed to talk about. Did you scan your Auction list included in last month's CRYSTAL BALL? Some goodies, aye? You had better make plans to attend. The **February Quarterly Meeting** will be on Friday evening **FEBRUARY 24th** and the **AUCTION** on

Saturday (Preview begins at 9:30 a.m. - Auction at 11 a.m.) **FEBRUARY 25th**. I guarantee good weather for the weekend!

I consider the Annual Auction to be, not only a place where you can purchase that piece of Cambridge glass you've been looking for, but also as a forum where everyone can learn more about Cambridge Glass.

The Program for the Quarterly Meeting will be a "Show & Tell" of all the pieces that even the "novice" and "expert" alike will want to learn more about. So, come and learn! Don't be afraid to ask questions that may seem frivolous. I'm sure Lynn or someone will be able to answer any questions you might have. This is what this whole organization is about, learning, owning and preserving.

Let me acquaint you with two more people this month who have (although they are members of N.C.C.) shown a lot of dedication and patience.

Every year, Tommy Mosser volunteers to make our Convention favor for us. These favors have become an incentive for members to attend the Convention. They are fast becoming collectors items. For Tommy to suspend his normal production items and make these "not so profitable items" for us, once again shows his willingness to help N.C.C. **THANK YOU TOMMY . . . from all of us!**

MEMBERSHIP RENEWAL NOTICE

If the date on your
address label is -

2 - 84

This is your **LAST ISSUE** of the **CRYSTAL BALL**.

Please renew NOW!



continued on page 2

CAMBRIDGE CRYSTAL BALL

Official publication of National Cambridge Collectors, Inc., a non-profit corporation with tax exempt status. Published once a month for the benefit of its members.

Membership is available for individual members at \$13 per year and additional members (12 years of age and residing in the same household) at \$3 each. All members have voting rights, but only one *Crystal Ball* will be mailed per household.

Back issues of the *Crystal Ball* are available (beginning with Issue No. 1, May 1973) for members only. Cost: \$.60 each or 12 issues for \$7.

1983-84 OFFICERS & COMMITTEE CHAIRPERSONS

PRESIDENT Willard Kolb
 VICE-PRESIDENT Josephine Barstow
 SECRETARY Janice Hughes
 TREASURER William Smith
 SERGEANT-AT-ARMS Don Armbrrecht

BUDGET & FINANCE David Rankin
 BY-LAWS David Rankin
 CONVENTION Josephine Barstow
 MEMBERSHIP Phyllis Smith
 MUSEUM Billy Harbaugh
 PROGRAM & ENTERTAINMENT Frank Wollenhaupt
 PROJECT Willard Kolb
 PUBLIC RELATIONS William Smith
 PUBLICITY Joseph Andrejcek
 STUDY GROUP ADVISOR Evelyn Allen

1984 AUCTION Lynn Welker
 1984 ANTIQUE SHOW Joy McFadden

CRYSTAL BALL EDITOR Phyllis Smith

CLASSIFIED ADVERTISING RATES

5c per word \$1.00 minimum
 We cannot mix type size in classified advertisements. Abbreviations and initials will count as words. Payment in full MUST accompany all ads.

DISPLAY ADVERTISING RATES

	Members	Non-Members
1/8 page	\$ 4.00	\$ 6.00
1/4 page	7.00	10.00
1/2 page	12.00	18.00
3/4 page	17.00	25.00
Full page	22.00	33.00

DEALERS DIRECTORY

1" ad (5 line maximum) \$6.00 for 6 months

Cambridge *Crystal Ball* assumes no responsibility for items advertised and will not be responsible for error in price, description or other information.

Advertising copy, articles, and club news and notices must be in our hands by the 10th of each month to assure publication in our next issue. Advertisements containing reproductions will not knowingly be accepted unless clearly stated.

Opinions or information stated in any signed article or letter printed in the *Crystal Ball* are those of the writer only and may or may not agree with National Cambridge Collectors, Inc. The editor reserves the right to refuse or edit material submitted for publication to conform to the editorial style of the *Crystal Ball*.

PLEASE ADDRESS ALL CORRESPONDENCE TO

National Cambridge Collectors, Inc.
 P.O. Box 416
 Cambridge, Ohio 43725

PRESIDENT: Willard Kolb 614/695-0695
 SECRETARY: Janice Hughes 614/432-7823
 EDITOR: Phyllis Smith 513/323-3888

PLEASE NOTIFY US IMMEDIATELY OF ANY CHANGE IN YOUR ADDRESS!

Please enclose a self-addressed stamped envelope when requesting information!!

THOUGHTS continued from page 1

Because of his link to both the past and present glass making industry, the name of Tommy Mosser is familiar to most of us. But, how many of you recognize the name RUSSELL BOOTH? (No, he is not the man who shot Lincoln!)

Attorney Booth is the man who has probably "pulled his hair out" many, many times because of the legal matters of this organization. An organization such as ours has to have many legal matters attended to, not the kind that will put anyone in the pen, but opinions on questions that arise periodically.

Mr. Booth has voluntarily helped us on these matters and I am sure you will all want to join me in **THANKING him for his dedication to N.C.C.**

WILLARD

CONVENTION DISPLAY ROOM

Plans are underway to have a Display Room at the 1984 Convention site. We did not have one last year and it was missed by many of our members.

As you know, having a Display Room is a lot of work, and help is needed from our entire membership. Charles Upton and Marybelle Moorehead have agreed to do the work involved in setting up this display, but YOUR help is needed.

The color for this years display will be PURPLE. This will include pieces in: amethyst; heliotrope; heatherbloom; violet, etc. It should make a beautiful display!

Would you please be kind enough to make up a list of any pieces you might have in any or all of these colors and that you would be willing to bring to the Convention to be used in this display. Send your list to either Charles or Marybelle, c/o the Club address — and PLEASE DO IT AS SOON AS POSSIBLE. They will then contact you as to which pieces they will be able to use.

PLEASE DON'T PUT THIS OFF — DO IT NOW! THANKS.

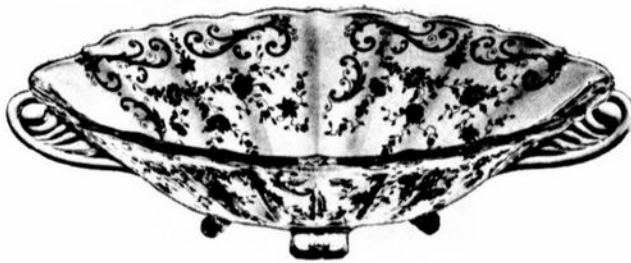
N.C.C. Convention —
 Antique Show-Sale
 June 22, 23, 24, 1984

I'm Always Surprised

by PHYLLIS D. SMITH

Regardless of the number of times I look thru the Cambridge Glass Company catalogs, it always seems to come as a surprise to me when I see something "I had never noticed before!"

This was the case a few weeks ago when Bill brought home a bowl exactly like the one pictured here . . . except for the fact that ours had no etching to help me with its identification.



3900/65
12 in. 4 Ftd. Oval Bowl

Since I don't get around to Shows, etc., like I used to, we have devised a little game whereby he brings his purchases home, all wrapped, and I try to guess what each piece is . . . before I unwrap it. Not to brag, but actually I'm getting pretty good at it and sometimes I even get lucky and guess the right color!

But, getting back to this bowl. I felt it, and felt it, and then felt it some more . . . but I soon realized it was something I had never felt before! I knew it wasn't Caprice, even tho there is some similarity in shape . . . and I soon had to give up and admit I could not tell what it was.

When I unwrapped it, I still didn't think it was a piece of Cambridge glass. In fact I was beginning to question his judgement (I really should know better by now!) in buying this obviously "non" Cambridge piece.

As you now know, I was wrong (once again - darn!) and had to admit it when he showed me the 1949-53 Catalog which pictures it in all its "plain" glory on page 38 . . . and in all its "etched" glory on numerous other pages! If this one had been etched or in one of the Cambridge colors . . . I just know I would have recognized it . . . well, maybe not.

Once again, I have to say "Study, study, and then study some more!" Does this sort of thing happen to you? I surely do hope so! At least I'll be sure to recognize this bowl as being CAMBRIDGE, if I ever see another one . . . I hope you will also!

Ten Years Ago In The Crystal Ball

ISSUE NO. 10

FEBRUARY 1974

Much good information was included in this eight page issue, and almost all of it was brand new to most of us who were still in our "infancy" when it came to collecting and recognizing Cambridge glass!

A very good article by Charles Upton gave us our first lesson in how to recognize an honest to goodness "real" Cambridge Turkey! What a thrill it was to read that information then . . . and it still holds up today. Several additional articles have been included in other issues of the CRYSTAL BALL, trying to explain in more detail the differences between the Cambridge and other turkeys, but this article was the foundation upon which the others were built.

Our FIRST of what was to become our annual Conventions was announced in this issue. It was to be held April 26th thru the 28th at the Cambridge Holiday Inn (that was plenty big enough to accommodate us then). It was also announced that Convention activities would include a tour of Bennett's Cambridge Glass Museum, as well as a glass display that would be included as a part of the 7th Annual Antique Show & Sale to be held at the Cambridge Armory the same weekend. Does all this bring back memories to many of you . . . it certainly should . . . it was a GREAT WEEKEND!

There was a nice article by Ruth Forsythe on the Stratford pattern . . . which was later turned into the Mt. Vernon by the Cambridge Glass Company. And Robert Coyle's "Collectors Corner" told us about all the wonderful finds he had heard of during the previous month. Included was a carmen Cut Wild Rose punch set, and a set of dinner service for 12, in carmen, was purchased in

continued on page 8

Sweetheart and Allegro Stems

by MARK NYE

What could be a more delightful way to celebrate St. Valentine's Day than to set a table with **Sweetheart** stemware. However, it is doubtful very many Cambridge Collectors will be able to do so.

The Sweetheart line, whose stem is a heart, appears to have been in the Cambridge line at most, for two and a half years, and perhaps was in production for even less than that.

Trade journals, during late winter and early spring of 1951, were advertising the line as new. At some point in time during the very early 1950s a supplemental page was added to the 1949 catalog showing the Sweetheart line was issued. It is from this page we learn the line number assigned was #3795. The line had been discontinued by fall of 1953 since a price list issued that October contained no reference to Sweetheart stemware or to the line number.

The few pieces of Sweetheart seen by this writer have been in crystal and undecorated. Whether or not the line was made in color or decorated is an unanswered question. What is known is, that even in crystal, one seldom finds pieces of this stemware.

Company records exist that show, prior to the initial plant closing in 1954, the stem for the #3795 stemware line was redesigned and new molds ordered. The redesigned stem consisted of two hearts interconnected at right angles. It is not yet known if the new molds were received and put into use prior to the plant closing.

The first documented proof for production of the new design is a trade journal advertisement dated February 1956. From this we learn the name for the #3795 line was also changed, the new name being Allegro.

The March 1956 Cambridge price list contained listings for Allegro stemware, plain and etched "Paisley," as did the October 1956 price list. The line is shown in the 1956-58 Cambridge catalog, plain or etched Paisley. The 1958 price list offered Allegro stemware plain, or with the rock crystal engraving

"Fascination," the Paisley etching having been discontinued by that date.

Besides Fascination, two other rock crystal engravings, "Spring" and "Fiesta" are known on Allegro blanks. Both of these engravings most likely date to 1957.

In addition to crystal, Allegro is known in smoke and smoke crackle. These treatments of the Allegro line do not appear in any known Cambridge catalog or price list and were no doubt produced for a very short time, probably during the period 1956-57.



ALLEGRO STEM WITH PAISLEY ETCHING
June 1956

This picture of the Allegro stem is actually taken from the 1956-58 Catalog, but an exact picture was in an advertisement placed by the Cambridge Glass Company in the June 1956 issue of "China, Glass & Lamps. Caption with the picture stated "Very new, very different — Paisley stemware pattern #3795. Retail \$2.35 each."

As is the case with Sweetheart, very little Allegro stemware, plain or decorated is being found today. Collectors of Cambridge stemware will do well not to pass up any opportunity to acquire a piece of either line.

It will probably never be known why the same line number was used for Sweetheart and Allegro and actually, it would only be of academic interest to learn why. To avoid confusion when discussing these lines, it is recommended the names be used, leaving the line number in its place in reference books.



3795 LINE
STEMWARE
Sweetheart



Goblet



Low Sherbet



Cocktail



Wine



Claret



Oyster Cocktail



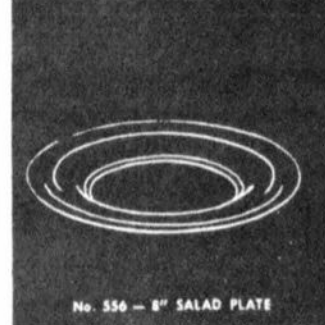
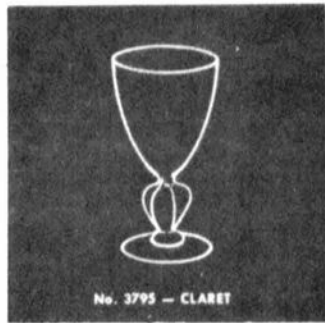
Cordial



12 oz. Ftd. Ice Tea

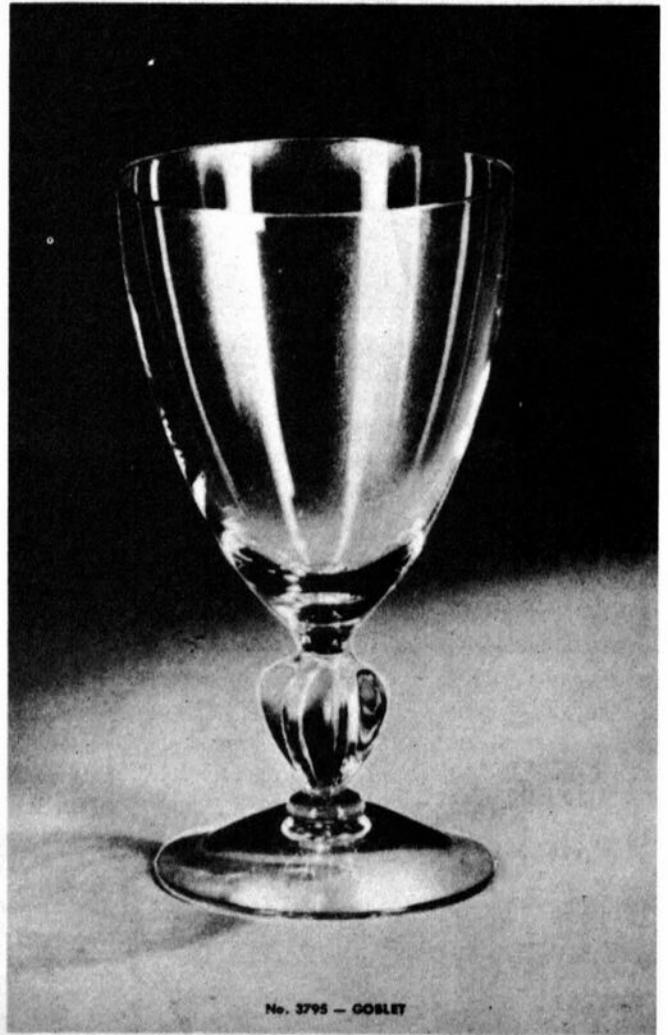


5 oz. Ftd. Tumbler



Allegro

No. 3795



Study Club News

STUDY GROUP #7 - EASTERN OHIO "THE CAMBRIDGE BUFFS"

The Cambridge Buffs Study Group held their Christmas Buffet Supper meeting on December 17th in the home of Dean and Pauline Westfall. There were fifteen members and four guests present.

Contests on Cambridge Glassware were played and the winners were Charles Upton, Shirley Douglas and Deanne Gray. A gift exchange of Cambridge Glass was held.

"Show & Tell" items were: Mt. Vernon ash tray; carmen coaster; crown tuscan Turtle flower frog; blue frosted 3 lite candlestick; amber optic vase; and a bud vase with daisy etching by Fostoria.

Mini-Auction was conducted by Dale Snode with proceeds to be used to purchase glass for the MUSEUM. Our next meeting will be held in January at the home of Jim and Shirley Douglas.

submitted by Deanne Gray

STUDY GROUP #8 - SOUTHERN MICHIGAN "THE MICHIGAN CAPRICES"

On December 11th, the Michigan Caprices met at the home of Frank and Phyllis Hayes for a Christmas Potluck.

The previous study meeting we had covered many blanks that Cambridge produced. When the Everglade pattern was mentioned, we had many questions come up. I decided that would be our December program. Clara and Ray Brown furnished several pieces of their forest green Everglade for display. What a beautiful color for Christmas.

Lee Coppo had a beautiful gold krystal #1283 vase with a Diane etching for "Show & Tell." The Hayes' had two pairs of candlesticks to show, one pair was the crystal ball candlesticks and the other a pair of Jade twist candlesticks.

The Study Group is still working on the "Index" of the CRYSTAL BALL. We are in hopes we will be able to get it all organized together soon. HAPPY NEW YEAR!

submitted by Phyllis Hayes

THINGS FOUND ON THE WAY TO LOOK UP SOMETHING ELSE!

by MARK NYE

Emerald Green and Mandarin Gold were being advertised as new colors in August 1949.

Gold Krystal was advertised as new in "China, Glass & Lamps" of September 1929.

The November 1951 issue of "China, Glass & Lamps" gave colors being used by Cambridge as: Moonlight Blue; Mandarin Gold; Amethyst; Emerald; Amber; Ebony; Crown Tuscan and Ruby.

The Caprice Doulton Pitcher was advertised in the February 1944 issue of "Crockery and Glass."

The etching "Daffodil" was advertised as new in the November 1951 issue of "Ladies Home Journal."

The Martha line punch bowl, #478, was being promoted as new in early 1939. Availability was plain or with the etchings, Chantilly, Blossom Time, Wildflower and Rosepoint.

Cambridge made bottles lettered "Ketchup," "Chili," and "Sauce," in addition to the more familiar "Oil" and "Vinegar" bottles.

The Virginian #134 cake salver remained in the Cambridge line until the final plant closing.

Etching #732 was advertised as new in the September 1929 issue of "China, Glass & Lamps."

Wildflower etching was being advertised as new in January 1937.

The #3600 2 piece cocktail icer was made with bowls in colors of Mocha, Pistachio, LaRosa and Moonlight Blue, the stem, foot and liner being in Crystal. No. 7801 tumblers (5, 10 and 12 oz. sizes) were also made in these same colors with a Crystal foot.

Tally-Ho flat tumblers were made in Dianthus Pink and Moonlight Blue, as well as in the usual colors associated with Tally-Ho.

WE GET LETTERS

Dear Phyllis, I'm glad to see you are back as editor of the CRYSTAL BALL. You do a super job, as always.

I'm writing in response to Mark Nye's "Caprice Update" in the January issue of the CRYSTAL BALL. This article prompted me to go back and reread his articles on Caprice in the November 1980 and February 1982 issues of the CRYSTAL BALL. I would like to comment on the series of Caprice vases, similar to #343 except with a smooth top. Mark stated that he owns a 4 1/2" and an 8 1/4" vase and assumes that there was also an intermediate size (roughly 6") made in that line. His assumption is correct as I own one in amethyst in this size. I also own the large 8 1/4" vase in amber, and the small 4 1/2" size in royal blue and forest green. In my collection of moonlight blue Caprice, I have a vase identical to #337 except this one has a smooth top too. I hope this information helps. I would like to publicly thank Mark for his undying interest in the research of Cambridge glass and his willingness to share his information with all of us. I have enjoyed ALL of his articles in the CRYSTAL BALL and hope they will keep coming.

If anyone has any questions on my vases or would like a Polaroid for confirmation, they can write me c/o N.C.C., P.O.Box 416, Cambridge, OH 43725, and I'd be happy to share.

In response to Vicki Sansom's letter in the January CRYSTAL BALL, if she will look on page 326 of Hazel Weatherman's "Colored Glass of the Depression Era 2," I'm sure she will see her black glass sweet pea vase with flower frog insert. It is shown in an old Greensburg Glass Works (Greensburg, PA) catalog, but since L. E. Smith Glass Company acquired Greensburg Glass Works during the depression, her vase could have been made by either company.

Now I have a question for all you members. I recently acquired a crystal Pristine Ice Bucket or large vase with original Cambridge label. It is etched and gold encrusted with this inscription: "M. D. U. Co., 1924-1949." Does anyone know what M. D. U. stands for? I found this locally but haven't been able to track down a Minnesota company with those initials.

Happy New Year to all . . . Elaine Storck, MN

I would also like to comment as members who have yet to get to Cambridge to see the MUSEUM or to any of the club functions, the CRYSTAL BALL really helps to make us feel as if we are members. Please keep up the quality of the publication (both in writing and pictures).

Sincerely Dale & Pat Ernst, WI

EDITOR'S NOTE: Thanks to all of you (Elaine, Dale and Pat) for taking the time to write. It really makes my job easier when our members take the time to help out in this manner. Please, won't more of you take the time to write and let us know what you are thinking and "what's new in your collecting Cambridge world."

Along this line, I would like to mention that we have had several of our members say that they would like to see a regular monthly column entitled "MY BEST FIND OF THE YEAR" or something similar. I am putting it to all of you — would you like to see something like this, and would you be willing to write me a letter (or article) telling about your "greatest" find during this past year. I'll be looking for YOUR LETTER IN THE MAIL! If possible please enclose a photo of same and I will be sure to return it to you. It would be nice if we could start next month — it's up to YOU!

TEN YEARS AGO . . . continued from page 3

Columbus, OH . . . but Bob didn't mention the pattern.

A few items were offered "For Sale" in a couple of advertisements . . . but probably nothing any of you would be interested in today. Let's see . . . there was an ebony 3 oz Nude Cocktail for \$18; a #658 crystal candelabra with no bobeches or prisms, but it did have tiny rams heads on ends for \$12.50. Crystal Rooster muddlers (3) were offered at \$5 each, and a 3" crown tuscan cornucopia for \$10, and then there was the moonlight blue Everglade bowl with matching candelsticks for \$115 for the set. There were several other items listed also . . . but like we said, "nothing anyone would be interested in today!" (Hope everyone knows we are joking!)

CAMBRIDGE ROSE (cont'd)

		Price Per Doz.	Price Each
3700	4½ oz. Oyster Cocktail	39.60	3.30
3700	1 oz. Cordial	39.60	3.30
3700	12 oz. Ftd. Ice Tea	39.60	3.30
3700	5 oz. Ftd. Tumbler	39.60	3.30
555	7½ in. Salad Plate	42.00	3.50
556	8 in. Salad Plate	51.00	4.25

CROESUS (722)

3500	10 oz. Goblet	\$48.00	\$4.00
3500	7 oz. Tall Sherbet	48.00	4.00
3500	7 oz. Low Sherbet	48.00	4.00
3500	3 oz. Cocktail	48.00	4.00
3500	2½ oz. Wine	48.00	4.00
3500	4½ oz. Claret	48.00	4.00
3500	4½ oz. Oyster Cocktail	48.00	4.00
3500	1 oz. Cordial	48.00	4.00
3500	5 oz. Cafe Parfait	48.00	4.00
3500	12 oz. Ftd. Ice Tea, Tall	48.00	4.00
3500	10 oz. Ftd. Tumbler	48.00	4.00
3500	5 oz. Ftd. Tumbler	48.00	4.00
968	2 pc. Cocktail Icer, Ftd.	66.00	5.50
3500/167	7½ in. Salad Plate	54.00	4.50
3500/5	8½ in. Salad Plate	57.00	4.75

CROWN (#6P)

3790	Goblet	\$45.00	\$3.75
3790	Sherbet	45.00	3.75
3790	12 oz. Ftd. Tumbler	45.00	3.75
3790	5 oz. Ftd. Tumbler	45.00	3.75
3790	Cocktail	45.00	3.75
3790	Wine	45.00	3.75
3790	Cordial	45.00	3.75
3790	Claret	45.00	3.75
556	8 in. Salad Plate	60.00	5.00

DANUBE (#32P)

Made in Moonlight Blue only

3790	Goblet	\$54.00	\$4.50
3790	Sherbet	54.00	4.50
3790	12 oz. Ftd. Tumbler	54.00	4.50
3790	Cocktail	54.00	4.50
556	8 in. Salad Plate	54.00	4.50

FESTOON (1071)

3790	Goblet	\$30.00	\$2.50
3790	Low Sherbet	30.00	2.50
3790	Cocktail	30.00	2.50
3790	Wine	30.00	2.50
3790	Claret	30.00	2.50
3790	Oyster Cocktail	30.00	2.50
3790	Cordial	30.00	2.50
3790	12 oz. Ftd. Ice Tea	30.00	2.50
3790	5 oz. Ftd. Tumbler	30.00	2.50
555	7½ in. Salad Plate	36.00	3.00

FLAME (1093)

	Price Per Doz.	Price Each
7966	Low Goblet or Ice Tea	\$30.00 2.50
7966	Low Sherbet	30.00 2.50
7966	Low Cocktail	30.00 2.50
7966	Low Wine	30.00 2.50
7966	Low Cordial	30.00 2.50
7966	5 oz. Ftd. Juice or Claret	30.00 2.50
7966	10 oz. Tall Goblet	30.00 2.50
7966/2	7½ in. Salad Plate	30.00 2.50
555		

FLIGHT (#3P)

3790	Goblet	\$30.00	\$2.50
3790	Sherbet	30.00	2.50
3790	12 oz. Ftd. Tumbler	30.00	2.50
3790	5 oz. Ftd. Tumbler	30.00	2.50
3790	Cocktail	30.00	2.50
556	8 in. Salad Plate	39.00	3.25

FORMAL

A-56	Goblet	\$33.00	\$2.75
A-56	Sherbet	33.00	2.75
A-56	12 oz. Ftd. Ice Tea	33.00	2.75
A-56	5 oz. Ftd. Tumbler	33.00	2.75
A-56	Cocktail	33.00	2.75
A-56	Wine	33.00	2.75
A-56	Claret	33.00	2.75
A-56	Cordial	33.00	2.75
556	8 in. Salad Plate	39.00	3.25

GLENDALE (1028)

3130	9 oz. Goblet	\$33.00	\$2.75
3130	7 oz. Tall Sherbet	33.00	2.75
3130	7 oz. Low Sherbet	33.00	2.75
3130	3 oz. Cocktail	33.00	2.75
3130	2½ oz. Wine	33.00	2.75
3130	4½ oz. Claret	33.00	2.75
3130	1 oz. Cordial	33.00	2.75
3130	4 ½oz. Oyster Cocktail	33.00	2.75
3130	12 oz. Ftd. Tumbler (Stemmed)..	33.00	2.75
3130	5 oz. Ftd. Tumbler	33.00	2.75
555	7½ in. Salad Plate	39.00	3.25
968	2 pc. Cocktail Icer, Ftd.	54.00	4.50

HARVEST (1053)

3750	Goblet	\$46.20	\$3.85
3750	Tall Sherbet	46.20	3.85
3750	Low Sherbet	46.20	3.85
3750	Cocktail	46.20	3.85
3750	Wine	46.20	3.85
3750	Claret	46.20	3.85
3750	Oyster Cocktail	46.20	3.85
3750	Cordial	46.20	3.85
3750	12 oz. Ftd. Ice Tea	46.20	3.85
3750	5 oz. Ftd. Tumbler	46.20	3.85
555	7½ in. Salad Plate	51.00	4.25
556	8 in. Salad Plate	60.00	5.00
P. 125	14 in. Plate	231.00	19.25
P. 212	10 in. 5 part Celery & Relish	159.00	13.25
P. 215	12 in. 3 part Relish	192.00	16.00
P. 247	11 in. Celery	108.00	9.00
P. 254	Sugar & Cream	120.00	10.00

HARVEST (1053) (cont'd)

		Price Per Doz.	Price Each
P. 306	6 in. Candy Box & Cover	144.00	12.00
P. 384	11 in. Oval Bowl	165.00	13.75
P. 418	12 in. 5 part Celery and Relish	165.00	13.75
P. 419	12 in. 2 pc. Relish	165.00	13.75
P. 427	10 in. Deep Salad Bowl	171.00	14.25
P. 430	12 in. Flower Bowl	174.00	14.50
P. 454	8 in. Crescent Salad Plate	60.00	5.00
P. 499	6½ in. Calla Lily Candlestick	72.00	6.00
103	7 in. 3 part Candy Box & Cover.....	165.00	13.75
278	11 in. Ftd. Vase	165.00	13.75
647	6 in. 2-lite Candlestick	84.00	7.00
1491	4 pc. Twin Salad Dressing Set	144.00	12.00
1613	Hurricane Lamp	264.00	22.00
3900/114	32 oz. Martini Jug	120.00	10.00
3900/115	76 oz. Jug	159.00	13.25
3900/120	12 in. 5 part Celery & Relish.....	159.00	13.25

KING EDWARD (821)

3700	9 oz. Goblet	\$52.80	\$4.40
3700	6 oz. Tall Sherbet	52.80	4.40
3700	6 oz. Low Sherbet	52.80	4.40
3700	3 oz. Cocktail	52.80	4.40
3700	2½ oz. Wine	52.80	4.40
3700	4½ oz. Claret	52.80	4.40
3700	4½ oz. Oyster Cocktail	52.80	4.40
3700	1 oz. Cordial	52.80	4.40
3700	12 oz. Ftd. Ice Tea	52.80	4.40
3700	10 oz. Ftd. Tumbler.....	52.80	4.40
3700	5 oz. Ftd. Tumbler	52.80	4.40
555	7½ in. Salad Plate	60.00	5.00
556	8 in. Salad Plate	66.00	5.50
103	7 in. 3 part Candy Box & Cover.....	159.00	13.25
P. 254	Sugar & Cream	118.80	9.90
321	1½ oz. Whiskey	30.00	2.50
321	7 oz. O.F. Cocktail	39.00	3.25
497	12 oz. Tumbler	39.00	3.25
1397	13½ in. Plate	144.00	12.00
1491	4 pc. Twin Salad Dressing Set.....	144.00	12.00
1613	Hurricane Lamp	297.00	24.75
P. 101	32 oz. Cocktail Shaker (Pat. D-133,198)	180.00	15.00
P. 212	10 in. 5 part Celery & Relish Tray	144.00	12.00
P. 247	11 in. Celery	108.00	9.00
P. 418	12 in. 5 pt. Celery and Relish.....	144.00	12.00
P. 454	8 in. Crescent Salad Plate	66.00	5.50
3900/114	32 oz. Martini Jug	118.80	9.90
3900/115	76 oz. Jug	144.00	12.00
3900/117	20 oz. Jug	92.40	7.70

LAUREL WREATH

3700	9 oz. Goblet	\$33.00	\$2.75
3700	6 oz. Tall Sherbet	33.00	2.75
3700	6 oz. Low Sherbet	33.00	2.75
3700	3 oz. Cocktail	33.00	2.75
3700	2½ oz. Wine	33.00	2.75
3700	4½ oz. Claret	33.00	2.75
3700	4½ oz. Oyster Cocktail	33.00	2.75
3700	1 oz. Cordial	33.00	2.75
3700	12 oz. Ftd. Ice Tea	33.00	2.75
3700	10 oz. Ftd. Tumbler	33.00	2.75
3700	5 oz. Ftd. Tumbler	33.00	2.75

LAUREL WREATH (cont'd)

		Price Per Doz.	Price Each
968	2 pc. Cocktail Icer, Ftd.	60.00	5.00
555	7½ in. Salad Plate	39.00	3.25
556	8 in. Salad Plate	46.20	3.85
628	3½ in. Candlestick	39.00	3.25
321	1½ oz. Whiskey	19.80	1.65
321	7 oz. O. F. Cocktail	30.00	2.50
497	14 oz. Tumbler	30.00	2.50
497	12 oz. Tumbler	30.00	2.50
P. 454	8 in. Crescent Salad Plate	51.00	4.25
P. 430	12 in. Bowl, flared	138.00	11.50
3900/72	6 in. 2-lite Candlestick	66.00	5.50
P. 306	6 in. Candy Box & Cover (Cut Knob)	108.00	9.00
533	5½ in. Comport	66.00	5.50
P. 290	6 oz. Oil, g.s.	60.00	5.00
3700	5 in. Blown Comport	93.00	7.75
P. 254	Sugar & Cream	72.00	6.00
P. 214	10 in. 3 part Relish	108.00	9.00
P. 166	13½ in. Plate, r.e.	156.00	13.00
1532	3 pc. Mayonnaise Set	81.00	6.75
P. 298	Marmalade & Cover & Spoon	45.00	3.75
P. 360	Salt & Pepper w/chrome top	54.00	4.50
P. 247	11 in. Celery	84.00	7.00
P. 418	12 in. 5 pt. Celery and Relish.....	132.00	11.00
P. 419	12 in. 5 pt. Relish	132.00	11.00
1498	8 in. 3 part Relish	92.40	7.70
3900/115	76 oz. Jug	99.00	8.25

SIX ITEM ASSORTMENT

P. 54	6 in. Low Comport	\$60.00	\$5.00
P. 56	8 in. Ftd. Plate	60.00	5.00
P. 253	Ind. Sugar & Cream	60.00	5.00
1180	5½ in. 2 Hdl. Bonbon	60.00	5.00
1497	6 in. 2 part Relish	60.00	5.00
6004	8 in. Ftd. Vase	60.00	5.00

LYNBROOK (1070)

3790	Goblet	\$30.00	\$2.50
3790	Low Sherbet	30.00	2.50
3790	Cocktail	30.00	2.50
3790	Wine	30.00	2.50
3790	Claret	30.00	2.50
3790	Oyster Cocktail	30.00	2.50
3790	Cordial	30.00	2.50
3790	12 oz. Ftd. Ice Tea	30.00	2.50
3790	5 oz. Ftd. Tumbler	30.00	2.50
968	2 pc. Cocktail Icer	54.00	4.50
555	7½ in. Salad Plate	36.00	3.00
P. 430	12 in. Bowl	138.00	11.50
628	3½ in. Candlestick	39.00	3.25
P. 306	Candy Box & Cover (cut knob)	108.00	9.00
533	5½ in. Comport	66.00	5.50
533/445	2 pc. Mayonnaise Set	72.00	6.00
P. 290	6 oz. Oil, g.s.	60.00	5.00
3700	5 in. Blown Comport	93.00	7.75
P. 254	Sugar & Cream	72.00	6.00
P. 214	10 in. 3 part Relish	108.00	9.00
P. 166	13½ in. Plate	156.00	13.00
1532	3 pc. Mayonnaise Set	87.00	7.25
P. 298	Marmalade & Cover & Spoon	48.00	4.00
P. 360	Salt & Pepper	51.00	4.25
3900/115	76 oz. Jug	99.00	8.25



1. Butter Dish and Cover.



1. Spoon Holder.



1. Cream Pitcher.



1. Sugar Bowl and Cover.



6. 7 oz. Squat Oil Bottle.



7. 8 oz. Squat Oil Bottle.



8. 8 oz. Tall Oil Bottle.



9. 5 oz. Tall Oil Bottle.



10. 6 oz. Tall Oil Bottle.



11. 4 oz. Tall Oil Bottle.



12. 8 oz. Tall Oil Bottle.



13. 7 oz. Catsup Bottle.



14. 7 oz. Tall Syrup Jug.
Ewer Cast Nickel Top.



15. 8 oz. Squat Syrup Jug.
O. K. Cast Nickel Top.



16. 13 oz. Tall Syrup Jug.
Ewer Cast Nickel Top



75. 7 oz. Cologne Bottle.



BOOKS FOR SALE

All of the available reference books relating to Cambridge Glass can be ordered directly from the Club.

Address your orders for any of the following to:

BOOKS

National Cambridge Collectors, Inc.
P.O. Box 416
Cambridge, Ohio 43725

Please add \$1.00 (P & I) on each book order.
(Not required for Price List only orders)

Ohio residents please add 6% State Sales Tax.

by National Cambridge Collectors, Inc.

1956-1958 CAMBRIDGE GLASS CO. CATALOG REPRINT

(164 page reprint of original catalog)
Paperback \$6.95

1949-1953 CAMBRIDGE GLASS CO. CATALOG REPRINT

(300 page reprint of original catalog)
Hardbound with 1983 Price Guide \$14.95

1930-1934 CAMBRIDGE GLASS CO. CATALOG REPRINT

(250 page reprint of original catalog)
Hardbound with 1982 Price Guide \$14.95

1983 PRICE GUIDE

for 1949-53 catalog reprint \$2.25 PP

1982 PRICE GUIDE

for 1930-34 catalog reprint \$2.25 PP

by Mary, Lyle, and Lynn Welker

CAMBRIDGE GLASS CO.

(120 pages of reprint from 8 old catalogs) \$6.95

CAMBRIDGE GLASS CO. BOOK II

(119 pages of reprint from old catalogs) \$6.95

CAMBRIDGE, OHIO GLASS IN COLOR II

(15 color plates w/descriptions and notes) \$5.95

by Harold and Judy Bennett

1903 CAMBRIDGE GLASS CO. CATALOG REPRINT

(106 page reprint of an original catalog) \$7.50

CLASSIQUE GLASS CO.

Box 52572 Tulsa, Oklahoma 74152
(918) 585-3203

CAPRICE

M.Blue 3-comp. 8 1/2" celery & relish	\$39.50
M.Blue creamer & sugar, standard - set	37.50
M.Blue #207 covered cigarette box, dolphin ftd.	38.00
M.Blue pair 3 ftd. ash trays for above	18.00
Mandarin Gold #66 13" 4 ftd. crimped bowl	95.00
Crystal Alpine #1338 3 lite Candelabrum	27.50
Crystal #131 low ftd. serving plate	25.00
Crystal saucer	5.00
Crystal Alpine #154 2 hdl. bonbon	17.50

CROWN TUSCAN

9 1/2" Cornucopia ftd. shell vase	85.00
13" shallow bowl shell pattern	60.00
SS35 covered cigarette box, dolphin ftd.	57.50

EVERGLADE

M.Blue #27 7 1/2" bowl	22.50
M.Blue #24 ftd. sherbet	25.00
M.Blue #19 12" oval bowl	55.00
M.Blue #26 sugar & creamer - set	65.00
Pink 3 ftd. 5" nappy	27.00
Crystal sugar bowl	15.00

ROSEPOINT ETCH

8 1/2" #3400 plate (4)	14.50
7 1/2" #3400 plate	12.00
6" diam. round saucer	6.00

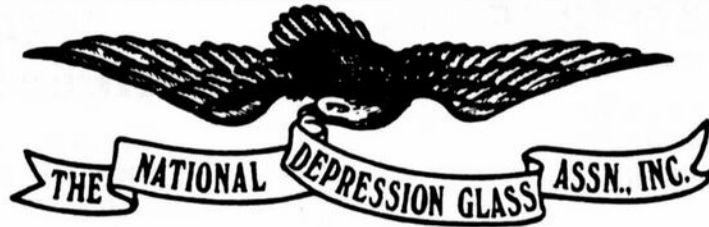
MISCELLANEOUS CAMBRIDGE

Cascade #573 9 1/2" vase, mandarin gold	45.00
Cascade #96 salt/pepper, original tops - set	15.00
Cornucopia 10" vase, mandarin gold	45.00
Chantilly etch creamer, clear w/sterling base	37.50
Chantilly etch salt/pepper, orig. metal tops	30.00
Portia etch sherbet, #3130 stem (3)	15.00
Minerva etch Gadroon ftd. creamer	37.50
Center hdl. #880 ebon bridge server	45.00
Lt.emr.(apple)gr. #3130 goblets, etch #739 (8)	22.00

ADVANCED COLLECTORS

7 1/2" carmen Nude stem compote	175.00
8" carmen Nude stem compote	200.00
Royal (cobalt) blue keyhole stem ivy bowl	57.50
8 1/2" Draped Lady flower holder	75.00

MINT UNLESS NOTED. PRICES EACH UNLESS NOTED.
POSTAGE & INSURANCE EXTRA.



THE PURPOSE OF THE ASSOCIATION IS TO UNITE PEOPLE IN GOOD FELLOWSHIP THROUGH SPONSORED ACTIVITIES AND FORM A CENTRAL ORGANIZATION OF MEMBERS WHO ARE INTERESTED IN PROMOTING DEPRESSION GLASS THROUGH AN EXCHANGE OF IDEAS AND INFORMATION.

BENEFITS OF MEMBERSHIP INCLUDE RECEIPT OF THE NEWSLETTER "NEWS & VIEWS," VOTING PRIVILEGES, AND NOTICE OF SPECIAL EVENTS SUCH AS THE ANNUAL CONVENTION, SHOW, AND SALE.

APPLICATION FOR MEMBERSHIP

MEMBERSHIP DUES PER YEAR: SINGLE \$8.00 _____ FAMILY \$10.00 _____

___ MR. ___ MRS. ___ MISS ___ MS. _____

ADDRESS _____

CITY _____ STATE _____ ZIP _____

MAKE CHECKS PAYABLE TO: NDGA, INC., AND MAIL TO
GEORGEANN HEMRY, MEMBERSHIPS
8337 SANTA FE LANE (CB)
SHAWNEE MISSION, KS 66212

COLUMBUS, OHIO ANTIQUÉ FLEA MARKET

Ohio State Fairgrounds - Lausche Building
Off I-71 Exit 17th Avenue - Columbus, Ohio

FEBRUARY 26th

Sunday Only - 7 A.M. to 4 P.M.
Show Admission \$1.00 - Under 12 Free
150 QUALITY DEALERS

SELLING: Advertising Art Deco, books, Cambridge, clocks, coins, collectibles, Depression glass, dolls, Fiesta, fine early furniture, Heisey, jewelry, lamps, oak furniture, post cards, pottery, good primitives, tools and print shop items.

STOCKWELL PROMOTIONS

4214 North High Street
Columbus, Ohio 43214
(614) 267-8163/263-6830/885-2352

NEXT SHOWS: April 1, May 13, June 24,
September 9, October 14, November 11, December 2

STAGE COACH ANTIQUE MALL

(formerly White Pillars Antiques)

7525 East Pike
Norwich, OH 43767
614/872-3720

MANY DEALERS. . .

PLENTY OF PARKING. . .

WIDE SELECTION OF GLASS
AND POTTERY
FURNITURE AND
GENERAL LINE!

BUY and SELL

OPEN YEAR ROUND
Weekdays - 10 AM - 5:30 PM
Sunday - 12 noon - 5:30 PM
Summer Evening Hours - by Chance!

Located 9 miles E. of Zanesville, OH, on I-70 to Nor-
wich Exit No. 164 - then 1/2 mile W. on Route 40.

16th Annual Antique Show & Sale

ARTS & CRAFTS BUILDING
OHIO STATE FAIRGROUNDS
(Exit 17th Ave. I-71 - Columbus, OH)

SATURDAY, FEBRUARY 18TH
11 a.m. to 9 p.m.

SUNDAY, FEBRUARY 19TH
12 noon to 6 p.m.
(Donation \$ 1.50)

Sponsored By
Xi Eta Lambda Chapter of Beta Sigma
Phi of Reynoldsburg, Ohio

Benefit: Reynoldsburg Police
Department and Discovery Day Camp

Show Chairman
Patsy Youtz
1519 Lexdale Drive
Reynoldsburg, Ohio 43068

Show Manager
George Hoffman
129 S. Fourth Street
Newark, Ohio 43055
614-345-8021

— Classified —

BUYING: CAMBRIDGE Rosepoint; Heisey Rose and Orchid; Fostoria etched dinnerware; and Depression glass. Also glass figures and unusual glass pieces. **Nadine Pankow**, 207 South Oakwood, Willow Springs, IL 60480. 312/839-5231

WANTED TO BUY: CARMEN or Royal Blue Nude Stemmed items. Write to: **Sawdeys Antiques**, 4349 Caroline Drive., Erie, PA 16509. Please enclose your phone number.

SELL & BUY: CAMBRIDGE; Fostoria; Heisey; and other crystal. Available now. Moonlight blue Caprice: cups & saucers, 4 sets \$38.50. Diane: #3500 3-part relish \$40. Elaine: #3500 10 ice teas \$25; 8 low sherbets \$18; 7 low wines \$32.50; 7 parfaits \$32.50; 8 tall cocktails \$28.50. Portia: #3126 champagne \$25; 3 #3121 champagnes \$20. Rosepoint: #3500/67 6 piece relish set \$300; 1 #1617 hurricane lamp \$225; 1 set P747 & P728 cigarette box & ashtrays \$425; 1 #3500/139 honey w/cover \$275; 6 #3500 footed waters \$32. One #119 basket etched Valencia \$150. All items priced each, plus shipping. Write wants. I search or write you list of items for sale with prices. SASE required. **Crystal Matching Service**, 1155 Willow Street #24, Faribault, MN 55021. 507/334-4457

WANTED: CAMBRIDGE heliotrope #234 1 gallon Ewer (pitcher) for Community wash bowl basin. Contact: **Pam Earussi**, 889 Stonybrook Lane, Lansdale, PA 19446. 215/855-5423

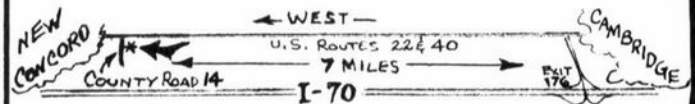
"One thing everybody in the world wants
and needs is friendliness."

WILLIAM E. HOLLER

MAGICAL UNICORN ANTIQUES

ROUTE #2 NEW CONCORD, OH 43762
(614) 826-7140

LARGE SELECTION OF CAMBRIDGE
GLASS - QUILTS - PRIMITIVES
Also Carry New Collectibles



Open by chance or
appointment! ANYTIME
to accommodate dealers
and travelers.



Owner: Yvonne L. Gordon

"Obstacles are those frightful things you see
when you take your eyes off the goal."

HANNAH MORE

Do You Agree?

COOPERATION IS DOING WITH A SMILE WHAT
YOU HAVE TO DO ANYWAY.

DEALERS



DIRECTORY

NOTE: When writing to the Dealers listed here, please enclose a SASE!

<p>EVELYN M. ALLEN 135 Cynthia Street Heath, Ohio 43055 Mail Order & Shows 614-522-1635 SPECIALIZING IN CAMBRIDGE GLASS!</p>	<p>BENICIA ANTIQUE SHOP 305 First Street Benicia, California 94510 OPEN 11 AM - 5 PM Closed Monday Z. E. LOPES 707-745-0978</p>	<p>CHARLES MIKULIK Box 416 Elizabeth, N.J. 07207 — COLLECTOR — Always paying good prices for CAMBRIDGE CAPRICE in all colors 201-688-1144 CARRY MOST TYPES OF ANTIQUES</p>
<p>COBALT CAROL'S CORNER 3141 W. Platte Ave., Colorado Springs, CO 80904 Phone: 303 / 633-7399 BUY — SELL — TRADE — GLASSWARE COBALT (ROYAL BLUE) - ANY COMPANY!</p>	<p>VISIT HISTORIC BENICIA and its 28 shops Off Interstate #80 North of San Francisco</p>	
<p>BERKELEY ANTIQUES 69 Berkeley St. Boston, MA 02116 George or Frank 617-426-1048 CAMBRIDGE, HEISEY, GENERAL LINE</p>	<p>ANDREJCAK'S ANTIQUES 14533 Bayes Ave. Lakewood, Ohio 44107 Joe & Karen Andrejcek 216-226-3417 SHOWS ONLY — CAMBRIDGE — FENTON — CHINA</p>	<p>HENDERSON'S ANTIQUES 303 Guilford Ave., Woodsfield, OH 43793 Mary & Wilbur Phone: 614 / 472-1133 SPECIALIZING IN CAMBRIDGE GLASS Shows, Mail & Stagecoach Antique Mall</p>
<p>D & D ANTIQUES Columbus, Ohio DICK SLIFKO SHOWS ONLY</p>	<p>THE HITCHING POST 7467 S. R. 88 Ravenna, OH 44266 Ph. 216-296-3686 D. McDaniel CAMBRIDGE — HEISEY — GENERAL LINE</p>	<p>FINDER'S KEEPER'S ANTIQUES P.O. Box 303 P.O. Box 16023 Dayton, O. Columbus, O. 45401 43216 513-254-2937 614-885-2726 SPECIALIZING IN CAMBRIDGE GLASS!</p>
<p>THE GLASS CUPBOARD 39 Shire Oaks Drive Pittsford, New York 14534 Marcia Ellis 716-586-7596 CAMBRIDGE ONLY INQUIRIES INVITED</p>	<p>GEORGE HOFFMAN ANTIQUES 129 South 4th Street Newark, Ohio 43055 614-345-8021</p>	<p>SNYDER ANTIQUES P.O. Box 010 Gates Mills, Ohio 44040 SPECIALIZING IN CAMBRIDGE GLASS Mail Order, Shows 216-461-2110 By Appointment</p>
<p>THE ANTIQUERY 42 E. Main St., St. Rt. 40 New Concord, Ohio 43762 Ph. 614-432-4483 Richard Bennett <i>Specializing in Cambridge Glass</i></p>	<p>J & L GLASS Laws Antique Center, Manassas, VA 22111 and 10629 Main St. Fairfax, VA 22030 703/273-8579 BUY & SELL: Depression, Cambridge, Heisey, Duncan & Fostoria Glass</p>	<p>1886 HOUSE East Schodack, N.Y. 12063 MAIL and SHOWS Laurie Cruise 518-477-5895 CAMBRIDGE - NORITAKE - AZALEA - D.G.</p>
<p>joyce's antiques Bought and Sold Specializing in HEISEY • CAMBRIDGE • VERLYS • AMERICAN GLASS P O Box 114 Albertson N Y 11507 (516) 499-3396</p>	<p>GLASS RAINBOW of California P.O. Box 127 Elk Grove, Ca. 95624 Neil & Ervina McCartney 916-685-5485 Hours: 9 a.m.-4 p.m., 7 p.m.-9 p.m. By appointments, Shows</p>	<p>ROLLING ACRES ANTIQUES 501 S. 9th St. Cambridge, Ohio 43725 Sandy Jenkins & Anne Ingram 614-432-2570 CAMBRIDGE & GENERAL LINE ANTIQUES</p>
<p><i>YOU CAN ADVERTISE YOUR ANTIQUESHOP HERE!</i> 1 inch - \$6 for six months</p>	<p>AL STEELE Westerville, Ohio 614-882-6483 or 614-882-7124 Mail Orders and Shows Only HEISEY — CAMBRIDGE — PATTERN GLASS</p>	<p>BETTY'S ICE HOUSE ANTIQUES 517 Fulton Street Wausau, Wisconsin 54401 Quality Antiques Cambridge - Heisey - General Line Betty R. Puestow Hours 1-5 Daily 715-848-7145 or by appointment</p>
<p>MARGARET LANE ANTIQUES 2 E. Main St., New Concord, OH 43762 Lynn Welker 614/826-4418 CAMBRIDGE GLASS MATCHING SERVICE Hours Mon.-Fri. 1-5 PM or by Appointment</p>	<p>SHIRLEY S. LADOUCEUR Antiques and Collectibles Specializing in Cambridge Glass BY APPOINTMENT 7597 Daphne Drive 315-458-5297 No. Syracuse, NY 13212</p>	<p>GREEN ACRES FARM <i>Antiques, Crystal Glass & Collectibles</i> Sat. & Sun. 1-7 PM (614) 927-1882 2678 Hazelton Etna Road (State Route 310 North) Pataskala, Ohio 43062</p>



National Cambridge Collectors, Inc.
P O Box 416, Cambridge, Ohio 43725

A nonprofit organization dedicated to the preservation and study of Cambridge Glass

You Are Cordially Invited
To Become A Member Of The
NATIONAL CAMBRIDGE COLLECTORS, INC.

Benefits derived from membership include: receipt of our club publication, The Cambridge CRYSTAL BALL; informative Quarterly Meetings; Antique Shows; Auctions; and other special events.

The Cambridge CRYSTAL BALL is published the first of each month. This newsletter contains educational and interesting articles, questions and answers, information on reproductions and reissues, notices of all club functions, classified advertisements, dealers directory, and many other features of interest to collectors of Cambridge Glass.

Yearly dues are \$13.00 for Individual Members and \$3.00 for each Associate Member. All members have voting rights, but only one issue of the CRYSTAL BALL will be mailed per household.

Name (please print) _____ \$13.00

Mailing Address _____

City _____ State _____ Zip _____

Associate Members: (Must be at least 12 years of age and living in the same household.)

1. Name _____

2. Name _____

3. Name _____

Total number of Associate Members _____ at \$3.00 each. \$ _____

TOTAL AMOUNT ENCLOSED: \$ _____

Please make check payable to: NATIONAL CAMBRIDGE COLLECTORS, INC.

Recommended by _____

USE THIS APPLICATION — NCC MEMBERSHIP MAKES A "GREAT GIFT"!

QUARTERLY MEETING & AUCTION!

The February Quarterly meeting will be held on Friday evening, February 24th, beginning at 8 p.m., at the Shenandoah Inn, Old Washington, OH. (I-70 & Exit 186, six miles East of Cambridge - phone: 614/489-5511)

An informative meeting will be followed by our "Show & Tell" session, as well as a preview of the Auction glassware. Be sure to bring your questionable glass for identification. Plan to stay overnite and to attend the Auction the next morning.

The All-Cambridge Glass Auction will be open for Preview beginning at 9:30 a.m. on Saturday morning, February 25th. The Auction will begin at 11 a.m.

Additional AUCTION CATALOGS are available at \$1.00 each, either postpaid or at the door day of sale. All members were sent a copy (in their January CRYSTAL BALL) if you did not receive you copy, please let us know right away.

DON'T MISS THE FUN - MAKE PLANS NOW TO ATTEND!

National Cambridge Collectors, Inc.
P. O. Box 416 Cambridge, Ohio 43725

FIRST-CLASS MAIL
U.S. POSTAGE
PAID
So. Vienna, Ohio
45369
Permit No. 15

FIRST CLASS MAIL

