

# Cambridge



# Crystal Ball

ISSUE NO. 139

NOVEMBER 1984

Published monthly by the NATIONAL CAMBRIDGE COLLECTORS, Inc.  
To encourage and to report the discovery of the elegant and boundless product  
of the Cambridge Glass Company, Cambridge, Ohio

## THOUGHTS FROM YOUR PRESIDENT . . . . .

This is the beautiful time of year . . . the time when Mother Nature brings out her paintbrush and makes all of us feel humble as she daubs her beautiful colors on the tree leaves and the leaves of other plant life.

There is a field that I have driven past twice a week, for years. It is perhaps 20 acres in size and I was always amazed at the tall green corn the farmer was always able to raise, year after year, in that field. The farmer passed away a couple of years ago and it was noticeable, in my travels, that the field seemed to have died also. Last year, as I recall, it was just a field of weeds, green yes, in the summer, but just an ugly brown after they had succumbed to the fall frosts. This year Mother Nature seems to be paying tribute to the farmer who spent so many years keeping the field so beautiful for now it is a beautiful golden sea of golden rod, so thick that when you look across it, it looks like a plush carpet.

This weekend (October 13-14) Norma and I are going to go to the mountains in Pennsylvania and enjoy Mother Nature's art work for awhile before she decides to ring down the curtain on her beautiful show. Soon, she will be throwing her colorful art work to the ground,

making the trees look like dark ghostly creatures, and turning the skies slate gray so that they reflect the ugly, dreariness of the landscape. Then, as if making amends for all this, she will put a beautiful blanket of soft white snow over the fallen art work and the ghostly dark creatures she created. Winter is coming to our area!

**SOME REMINDERS!** When you receive your CRYSTAL BALL this month, you will still have time to make plans to attend the November Quarterly Meeting, details of which can be found on page 20 of this issue. You may even have time to beat the dinner reservation deadline if you call Janice or me immediately after reading this! Our phone numbers are listed at the bottom of the first column on page 2.

I forgot to mention last month that we will hold a short "Mini-Auction" at the November Quarterly Meeting, as usual! If you have some little thing you would like to bring and donate for this MUSEUM money-maker, please do so. We will appreciate it!

All of you who are considering consigning glass to the All-Cambridge Glass Auction this year should have had your lists mailed to Lynn Welker by now. If you have not done so, be sure you bring your list to the Quarterly meeting. This doesn't give Lynn much time to assemble the glass and get the Auction List to Phyllis so it can be published in the January CRYSTAL BALL (it must be ready for the printer by December 10th). So please try to cooperate.

### MEMBERSHIP RENEWAL NOTICE

If the date on your  
address label is..

**11 - 84**

This is your LAST ISSUE of the CRYSTAL BALL.  
Please renew NOW!



# CAMBRIDGE CRYSTAL BALL

Official publication of National Cambridge Collectors, Inc., a non-profit corporation with tax exempt status. Published once a month for the benefit of its members.

Membership is available for individual members at \$13 per year and additional members (12 years of age and residing in the household) at \$3 each. All members have voting rights, but only one *Crystal Ball* will be mailed per household.

Back issues of the *Crystal Ball* are available (beginning with Issue No. 1, May 1973) for members only. Cost \$.60 each or 12 issues for \$7.

## 1984-85 OFFICERS & COMMITTEE CHAIRPERSONS

PRESIDENT .....	Willard P. Kolb
VICE-PRESIDENT .....	David B. Rankin
SECRETARY .....	Janice Y. Hughes
TREASURER .....	William C. Smith
SERGEANT-AT-ARMS .....	Marybelle Moorehead
BUDGET & FINANCE .....	David B. Rankin
BY-LAWS .....	David B. Rankin
CONVENTION .....	David B. Rankin
MEMBERSHIP .....	Phyllis D. Smith
MUSEUM .....	Billy Harbaugh
PROGRAM & ENTERTAINMENT ...	Frank Wollenhaupt
PROJECT .....	Willard P. Kolb
PUBLIC RELATIONS .....	William C. Smith
PUBLICITY .....	Joseph Andrejcek
STUDY GROUP ADVISOR .....	Evelyn M. Allen
1985 AUCTION .....	Lynn M. Welker
1985 ANTIQUE SHOW .....	Joy McFadden
1985 FLEA MARKET .....	Larry F. Hughes
CRYSTAL BALL EDITOR .....	Phyllis D. Smith

## CLASSIFIED ADVERTISING RATES

5c per word \$1.00 minimum  
 We cannot mix type size in classified advertisements. Abbreviations and initials will count as words. Payment in full MUST accompany all ads.

## DISPLAY ADVERTISING RATES

(camera ready ads preferred)

	Members	Non-Members
1/8 page (9 items) .....	\$4.00	\$6.00
1/4 Page (20 items) .....	7.00	10.00
1/2 page (20 items) .....	12.00	18.00
3/4 page .....	17.00	25.00
Full page (50 items) .....	22.00	33.00

## DEALERS DIRECTORY

5 line maximum ..... \$12.00 for 12 months

Cambridge *Crystal Ball* assumes no responsibility for items advertised and will not be responsible for error in price, description or other information.

*Advertising copy, articles, club news and notices must be in our hands by the 10th of each month to assure publication in our next issue.* Advertisements containing reproductions will not knowingly be accepted unless clearly stated.

Opinions or information stated in any signed article or letter printed in the *Crystal Ball* are those of the authors and may or may not agree with National Cambridge Collectors, Inc. The Editor reserves the right to refuse and to edit any material submitted for publication so as to conform with the editorial style of the *Crystal Ball*.

## PLEASE ADDRESS ALL CORRESPONDENCE TO

National Cambridge Collectors, Inc.  
 P.O. Box 416 Cambridge, Ohio 43725

**PRESIDENT:** Willard Kolb .... 614/695-0695  
**SECRETARY:** Janice Hughes .... 614/432-7823  
**EDITOR:** Phyllis Smith .... 513/323-3888

NCC MUSEUM of Cambridge Glass is located on U.S. Route 40, 1/8 mile east of I-77 near Cambridge. Hours: 12 noon to 4 PM - Wednesday thru Sunday. (March thru November)

PLEASE NOTIFY US IMMEDIATELY OF ANY CHANGE IN YOUR ADDRESS

Please enclose a SASE when requesting information

# CAMBRIDGE GLASS BOOKS FOR SALE

by National Cambridge Collectors, Inc.

\* **COLORS IN CAMBRIDGE GLASS**  
 (128 pages - 60 color plates - fully indexed)  
 Hardbound with 1984 Price Guide \$19.95

\* **1930-34 CAMBRIDGE GLASS CO. CATALOG REPRINT**  
 (250 page reprint of original catalog)  
 Hardbound with 1982 Price Guide \$14.95

\* **1949-53 CAMBRIDGE GLASS CO. CATALOG REPRINT**  
 (300 page reprint of original catalog)  
 Hardbound with 1983 Price Guide \$14.95

\* **1956-58 CAMBRIDGE GLASS CO. CATALOG REPRINT**  
 (164 page reprint of original catalog)  
 Paperback \$6.95

**1982 PRICE GUIDE**  
 for 1930-34 catalog reprint Postpaid \$2.25

**1983 PRICE GUIDE**  
 for 1949-53 catalog reprint Postpaid \$2.25

\* **NCC MEMBERS ONLY:** *These publications are available at 10% discount - or all four (4) at one time for \$50.00.*

by Mary, Lyle and Lynn Welker

**CAMBRIDGE GLASS CO.**  
 (120 pages of reprint from 8 old catalogs)  
 Paperback \$6.95

**CAMBRIDGE GLASS CO. BOOK II**  
 (119 pages of reprint from old catalogs)  
 Paperback \$6.95

**CAMBRIDGE, OHIO GLASS IN COLOR II**  
 (15 color pages with descriptions and notes)  
 Spiralbound \$5.95

by Harold and Judy Bennett

**1903 CAMBRIDGE GLASS CO. CATALOG REPRINT**  
 (106 page reprint of an original catalog)  
 Paperback \$7.50

Address your orders to:

**BOOKS**  
 National Cambridge Collectors, Inc.  
 P.O. Box 416  
 Cambridge, OH 43725

Please add \$1.00 (P & I) per order.  
 (Not required for Price Guide)  
 Ohio residents please add 6% state sales tax.

**DEALER DISCOUNTS AVAILABLE - PLEASE WRITE!**

# RECENT REISSUES!

by PHYLLIS SMITH

## CAPRICE 2" SALT DIP and 6 1/2" SWAN

We have received information from the Summit Art Glass Company, owned and operated by Russ and Jo Ann Vogelsong, which states that they have produced glass in two old Cambridge Glass Company molds during the past two months. The pieces produced were the Caprice 2" 4-toed salt dip and the 6 1/2" swan. Both pieces were issued in several colors.



1042  
6 1/2 in. Swan



95-2 in. 4 Ftd. Almond

It is felt that quoting directly from the promotional literature issued by Summit Art Glass Company will best answer any questions our members might have concerning these reissues.

"You will notice on the price sheet a 6 1/2" Swan and a 4 toed Caprice salt dip listed that will seem new to you, here is the reason. As most of you are aware the Imperial Glass Corporation went bankrupt and has been ordered to liquidate. Prior to this court order Imperial officials believed the courts would allow them to continue to operate in Chapter 11 (this is a phase of bankruptcy where a company can continue to operate without having to liquidate itself). It was at this time Russ negotiated with Imperial officials to test in actual production 2 molds from the old Cambridge Glass Co. The 6 1/2" Swan mold and the 2" round 4 toed Caprice salt dip. These items are listed in the

price sheet. The molds were returned to Imperial. Whether these molds will ever return to Summit Art glass is not known."

The accompanying Retail Price List indicated the 6 1/2" swan was produced in Rubina and Amberina. (Priced at \$18 each.)

The Caprice 2" 4-toed salt dip (Cambridge called them an "almond") was produced in Rubina, Watermelon, Sahara Gold and Cobalt. (Priced at \$5 each.)

It is our understanding that these items bear no markings of any kind.

Our THANKS to the Vogelsong's for sending us this information concerning the use of these old Cambridge Glass Company molds. It is our hope that they will continue to keep us informed.

## BOARD OF DIRECTORS ELECTION RESULTS!

reported by Phyllis Smith

The 1984 Convention has been history for over four months now -- and we have failed to print an article concerning election results for our Board of Directors. I do apologize to all concerned for this oversight.

MARYBELLE MOOREHEAD of Cambridge, OH was newly elected, and JOSEPH ANDREJCAK, Lakewood, OH and BILLY F. HARBAUGH, Cambridge, OH were both reelected to four year terms on the NCC Board of Directors.

At their Board of Directors meeting held on July 21, 1984, the following officers were elected to serve for the 1984-85 year.

President: WILLARD P. KOLB  
Vice-President: DAVID B. RANKIN  
Secretary: JANICE Y. HUGHES  
Treasurer: WILLIAM C. SMITH

Outgoing Board member DON E. ARMBRECHT, of Avon Lake, OH, decided to resign after serving on the Board for almost six years. We extend sincere "Thanks" to you Don, for your many years of service to NCC. Our warmest wishes to both you and Odulla, as you enjoy your retirement and those grandchildren!

# CAMBRIDGE JUGS

## PART III

by MARK NYE

The Mount Vernon line was introduced in the fall of 1931 and while our emphasis here is on jugs, I thought CRYSTAL BALL readers might enjoy the following. It is taken from the January 28, 1932 issue of "The Pottery, Glass and Brass Salesman."

"One of the patterns in the pressed glass line of the Cambridge Glass Company of Cambridge, Ohio which has recently been received . . . is known as the "Mount Vernon." Here is an early American design, noteworthy for the faithfulness with which the original is copied and, above all, for the brilliancy of its finish. Inspired by worthy traditions and executed with true craftsmanship, it lends itself naturally to the early American dining room ensemble. It is obtainable in all of the Cambridge finest antique colors, including amber, royal blue, forest green and carmine, together with crystal. It is shown in a complete range of stemware - - which, by the way, is characterized by a square foot - - and in flatware. The shapes of the stemware are absolutely authentic and include not only the square foot but the ball-shaped stem, ornamented in the same criss-cross or diamond design which characterizes the decorative treatment throughout."

Three of the four Mount Vernon jugs appearing in the 1940 catalog also were illustrated in the 1930-34 catalog. Mount Vernon #91 86 oz. jug and Mount Vernon #13 66 oz. jug were both shown in the 1932 Cambridge catalog supplement, the first appearance of the Mount Vernon line. The MV #90 50 oz. jug doesn't appear until the 1934 supplement; however, this by no means is to be construed as evidence that it was not introduced until 1934. The fourth MV jug being sold in 1940 is the MV #95 80 oz. ball jug. While not pictured in the 1930-34 catalog and supplements, this jug may have been in production at that time or perhaps was introduced during the second half of the 1930s. It is known this jug was in production by September of 1939.

As to whether or not all four of the Mount Vernon Jugs were made in all of the colors listed above remains for jug collectors and/or Mount Vernon collectors to tell us. I can tell you that by 1940, only crystal Mount Vernon was being made. While some Mount Vernon items remained in the Cambridge line until the final plant closing, the jugs were dropped from the line prior to 1949.

Cambridge catalog pages dating to early 1936 and showing the Caprice pattern pictured the #183 80 oz. ball shaped jug. The first known reference to the Caprice #178 Doulton jug and the #179 32 oz. ball shaped jug is the August 1936 issue of "China, Glass and Lamps."

The Caprice #178 jug is the second of the two jugs Cambridge, in 1940, was referring to as Doulton jugs, the other being the previously described #3400/152 jug. Note carefully the similarities between the two jugs, in particular, the handles and lips. The Caprice Doulton jug was made in crystal and moonlight, plain or Alpine, during its entire production run, 1936 to at least 1944 which is the last known dated reference to this jug. Actual discontinuance may have taken place anytime between then and 1949. One of the most difficult of all pieces in Caprice to locate today, moonlight jugs predominate over crystal ones in recent years and rarely, if ever, is an Alpine Doulton jug seen. There are doulton style Caprice jugs in other Cambridge colors but unless they have the high handle, they are not the true Doulton jug.

The Caprice #179 32 oz. jug, sometimes called a juice or milk pitcher, was made in crystal, moonlight and LaRosa, plain or Alpine. This jug was also discontinued sometime between 1940 and 1949. However, unlike the Doulton, it was later reissued by Imperial. As is the case of other Caprice by Imperial, unless the production is in colors not used by Cambridge, it is virtually impossible to distinguish between Cambridge and Imperial Caprice.

The Caprice #183 80 oz. ball jug was a hardy item in that it managed to survive until the final plant closing in 1958. Made in crystal during the entire time, the #183 jug was also made in moonlight from 1936 until at least late 1950 and, during the early years and on

continued on page 6





# JUGS



Mt. Vernon 90—50 oz.  
Jug



Mt. Vernon 91—86 oz.  
Jug



Mt. Vernon 13—66 oz.  
Jug



Caprice 179—32 oz. Ball



Caprice 178—80 oz. Doulton



Mt. Vernon 95—80 oz. Ball Jug



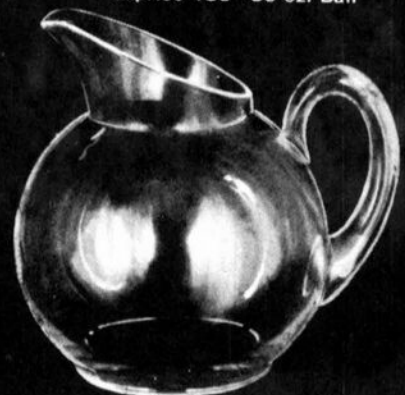
Caprice 183—80 oz. Ball



75—54 oz. Jug



76—64 oz. Ftd. Jug



71—86 oz. Jug Cut Top

CAMBRIDGE JUGS . . . continued from page 4

into the 1940s, in LaRosa. All three colors were made plain or Alpine although few Alpine jugs are seen today.

It is from the Pristine line our next three jugs come. The Pristine pattern originated circa 1936 and the 1958 price list was still listing Pristine, but the jugs had long since been discontinued, this taking place during the 1940s. The January 1940 price list had Pristine available in crystal only, with the exception of two ashtray sets, and it is doubtful if much else of the line was ever made in color.

The Pristine #71 86 oz. jug with cut top was being sold in 1940, just as you see it here, plain, undecorated and of course, in crystal, a "No Frills" jug so to speak. The other two jugs, #75 a 54 oz. jug, and #76 a 64 oz. footed jug did come decorated as well as plain. Both were being made with D/450 or as it is also known D/Astoria, a gold band edge, and D/1050 which is Laurel etched and gold encrusted. The #75 jug was also available with D/1054, etched Laurel with a gold edge.

to be continued . . . . .

**OLD MAGAZINE REPRINT!**

The following two pages (7 & 8) are from the March 1949 issue of "Ceramic Industry", a trade publication directed toward the enamel, glass and pottery industries.

The gentlemen in the photo in the lower right hand corner of page 7 has been identified as mixer George Sklenar. The lady decorator in the photo on page 8 is Mrs. Edward (Alva) Volz.

If anyone can identify any of the other men pictured on page 7, we certainly would appreciate hearing from you.

*How much is a billion?*

- *Approximately one billion seconds ago Harry Truman was President of the U.S.*
- *Give or take a few, a billion minutes ago was the time of Christ.*

THOUGHTS . . . . . continued from page 1

Christmas is getting very close and I suppose most of you still have some shopping to do. Don't forget the ideal gifts. They are available through NCC.

\*\*\*\*\*

**NCC CHRISTMAS GIFT IDEAS**

Scotty Dog bookends at \$30 each, plus \$3 postage and handling.

Cute little Pencil Dog Cup Plates in crystal, cobalt blue, teal and amethyst at \$7 each plus \$1 postage and handling.

Don't forget all the books available on Cambridge Glass . . . especially the new Color Book. Check on page 2 in this issue for our ad listing all the books we have available.

All Ohio residents, please be sure to add the 6% state sales tax to all your orders.

\*\*\*\*\*

I will see many of you before Thanksgiving at the November Quarterly Meeting. For those of you who cannot attend, have a safe and Happy Thanksgiving as you join your family and friends in giving Thanks for all we have. Perhaps in our prayers we could remember all of our fellow members who were so much a part of NCC, but whom God has chosen to make members of his own flock.

HAPPY THANKSGIVING!

WILLARD

**MARK YOUR CALENDAR**

**Quarterly Meeting**

FRIDAY, FEBRUARY 22, 1985 - 8 PM

**All Cambridge Auction**

SATURDAY, FEBRUARY 23, 1985 - 11 AM

**Convention & Antique Show & Sale**

JUNE 28, 29, 30, 1985

**All the above events will be held at the Shenandoah Inn, Old Washington, Ohio**

# Cambridge Glass Gears for Future Optimistically and Realistically

**Ups furnace capacity 33 1/3 percent.**

**Continues time-tested, fair-play personnel policies.**

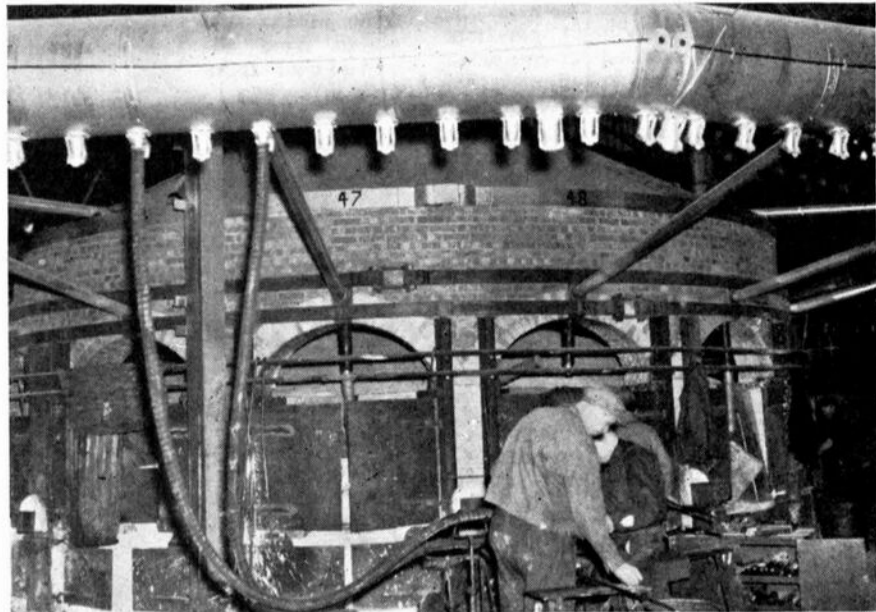
**Intensifies quality control.**

With the completion of construction and the beginning of operation of a new 14-pot furnace in January of this year, the Cambridge Glass Co., Cambridge, Ohio, in effect, gave notice to tableware manufacturers and retailers and the public at large that it is prepared to maintain high production of quality glassware in the face of stiff competition, expected recessions, and the new buyers' market.

This optimistic outlook is based on a careful evaluation of past sales, present orders, and foreseeable trends. Summing up the company's feelings in a recent statement, President W. L. Orme, said, "There is nothing unusual about the optimism at Cambridge. It stems from the plant's experience in facing other difficulties at times during the company's half century of operations and the conviction that the market for a top quality product will continue to grow."

### **Ups Melting Capacity 33 1/3%**

The new furnace represents a 33 1/3 percent increase in melting capacity for the plant. At present it



**Production from this new 14-pot regenerative furnace started in January.**

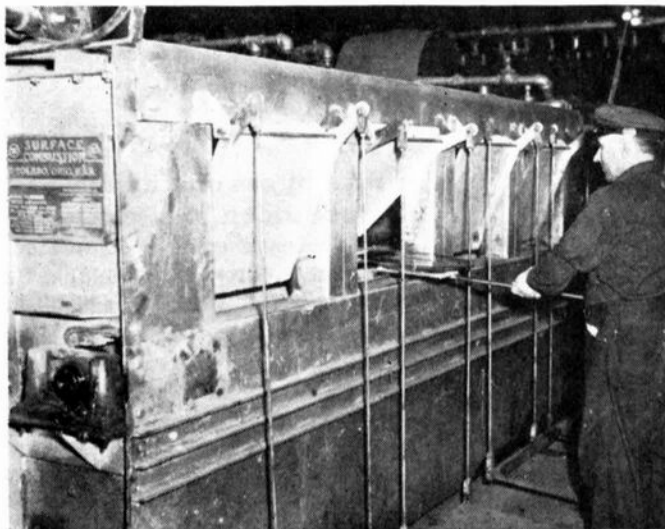
is devoted entirely to the production of lime glass for pressed ware.

### **Old-timer Presses First Ware**

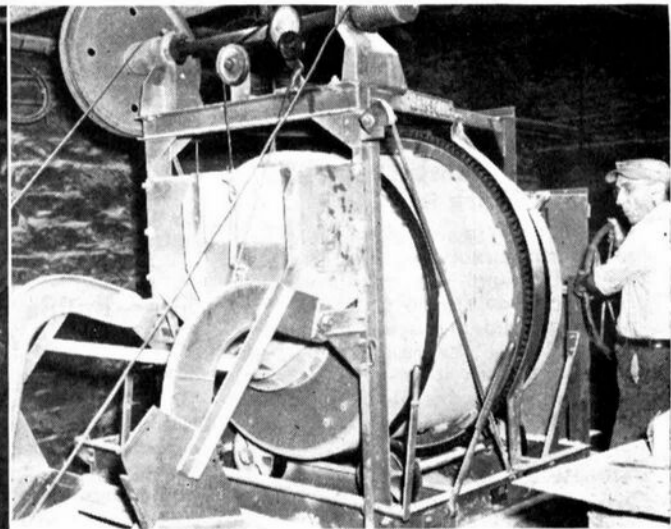
Interesting to note and a significant indication of the attitude of mutual esteem between employer and employees at Cambridge is the fact that Charles Degenhart, the presser who created some of the first ware produced when the plant opened in 1902, also pressed the first piece from the new furnace.

The policy of keeping old and faithful employees on the staff whenever possible was started during the early year of the company by its illustrious organizer and first president, Arthur J. Bennett.

The present leaders of the company, President, W. L. Orme, Sr.; G. Roy Boyd, Vice-president and Treasurer; A. B. Orme, Vice-president; W. C. McCartney, Secretary and Sales Manager; H. A. Lovelady, Assistant Sales Manager; Mrs. W. L. Orme, H. H.



**One of the six Surface Combustion lehrs at Cambridge receives a large torte plate.**



**Batches, weighing up to 1228 lbs. either lime or lead glass, are mixed in this Ransome mixer.**



Burt, W. L. Orme, Jr., Directors; and Factory Managers, O. J. Mosser, A. Van Beach, and F. G. Rickey have continued this policy, and in doing so, have surrounded themselves with a capable staff of trained and experienced artisans loyal to the company.

Although the plant is devoted entirely to the production of first quality tableware — traditionally a skilled craft requiring many hand operations, a good deal of mechanical equipment is used where it will speed operations and aid in smooth flow of production.

#### Pioneer in New Equipment

Cambridge was one of the first to convert from the old pan type lehrs many years ago, and now uses six of the gas-fired, completely-instrumented, continuous type. The first three furnaces too, originally the Murphy deep-eye type, were converted in 1905 to more efficient regenerative operation, making the plant a pioneer in the application of the principle to production equipment. Mixing, also, is handled with the most modern equipment although the batching and raw material storage facilities have yet to be modernized.

#### Generate Own Power

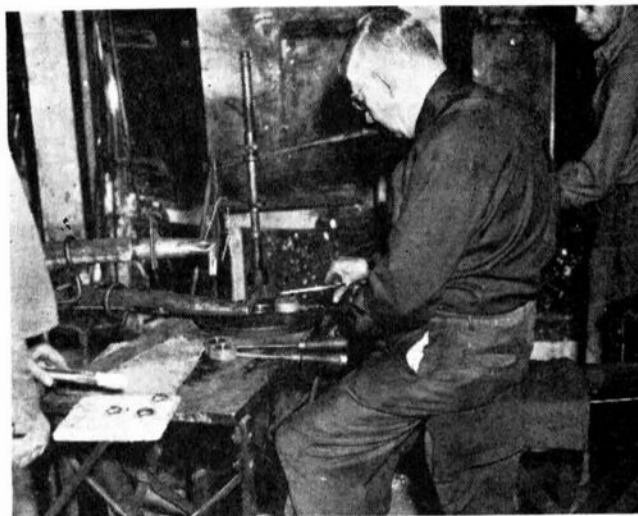
The plant generates its own electrical power in a complete and adequate power house on the premises. A five-cylinder Diesel engine is ordinarily the prime mover for the generating system, but is supplemented by stand-by equipment in case of emergency. Some years ago the company wisely invested in a nearby natural gas field so that its fuel worries are somewhat less than the usual plant's.

#### Distinctive Decorating

Any story of Cambridge Glass would not be complete unless some mention were made of the extensive decorating facilities at the plant, for there, more than anywhere else in the plant, the ware gets the distinctive touches that make it Cambridge Crystal.

Etching—by the deep plate method exclusively—cutting, and decorating

**Veteran presser Charles Degenhart shapes ware from new furnace. Degenhart pressed some of the first pieces from the original Cambridge furnace.**



**Applying Hanovia gold to an etched goblet in the Cambridge decorating department.**



with gold, silver, or platinum are all used at Cambridge to make beautiful glass more beautiful. Ware for the decorating department is carefully selected from stock and goes through a varied cycle of operations depending upon the piece being worked upon and the final results desired. The operations of decorating whether etching, cutting, or encrusting with precious metals, are done almost exclusively by hand. A large corps of skilled men and women coat ware

with wax, place and mark designs, acid dip, cut, apply precious metals, polish and inspect the ware—all working toward the production of the finest in glassware.

Today, less than a half century after the dream of Cambridge Glass was born in the mind of Arthur J. Bennett, the more than 5000 separate items in the Cambridge line are known the world over for their beauty of design and excellence of craftsmanship.

## American Celebrates Half Century Mark in 1949

American Window Glass Co., Pittsburgh, Pa., announces that the year 1949 will round out a half century of industrial achievement for the firm. High achievement during the period, they said, was the research and experimental work to produce a better glass which has resulted in its new process Suprarest Safety glass.

## Pittsburgh Corning Moves Offices to Larger Space

The home offices of the Pittsburgh (Pa.) Corning Corp. have been transferred from the Pittsburgh Plate

Glass Building to larger quarters in Pittsburgh, it was recently announced by Julian P. Staples, general manager.

## Store Builds Crystal Connecting Bridge

Rich's Fashion Store in Atlanta, Ga., recently completed construction of what is called a Crystal bridge across to its new \$7 million store for homes. The bridge is five-stories high, adequately wide, and glazed the full length. Not only does it constitute added selling and display space, but it is a building high show window across the downtown street.

## Urges Stress on Fashion Coordination in Lighting

At a recent meeting of the California Electric Supply Co., held in San Francisco, Ted Berk, merchandising vice president and director of Lightolier, Inc., New York, N. Y., urged that the stress be placed on fashion. He stated that selling in a fast-moving rhythmical pattern, from manufacturing through consumer level, is necessary to successful merchandising. People today look for style coordination in home furnishings, he continued, and they must find this element in their lighting equipment.



# CAMBRIDGE, OHIO . . . . U. S. A.



3500/111  
6 in. Tall Comport  
\$24.75 Doz.



3500/71  
7 1/2 in. Relish  
3 Compt. Center Hdl  
\$16.50 Doz.



3500/37  
7 in. 2 Hdl Tall Comport  
\$24.75 Doz.



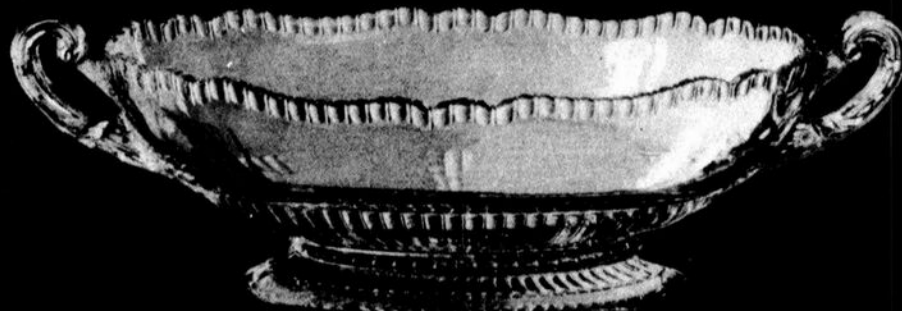
3500/36  
6 in. Tall Comport  
\$16.50 Doz.



3500/144  
5 Pc. Bridge Set  
\$23.75 Doz.



3500/114  
7 Pc. Liquor Set  
\$22.50 Doz.

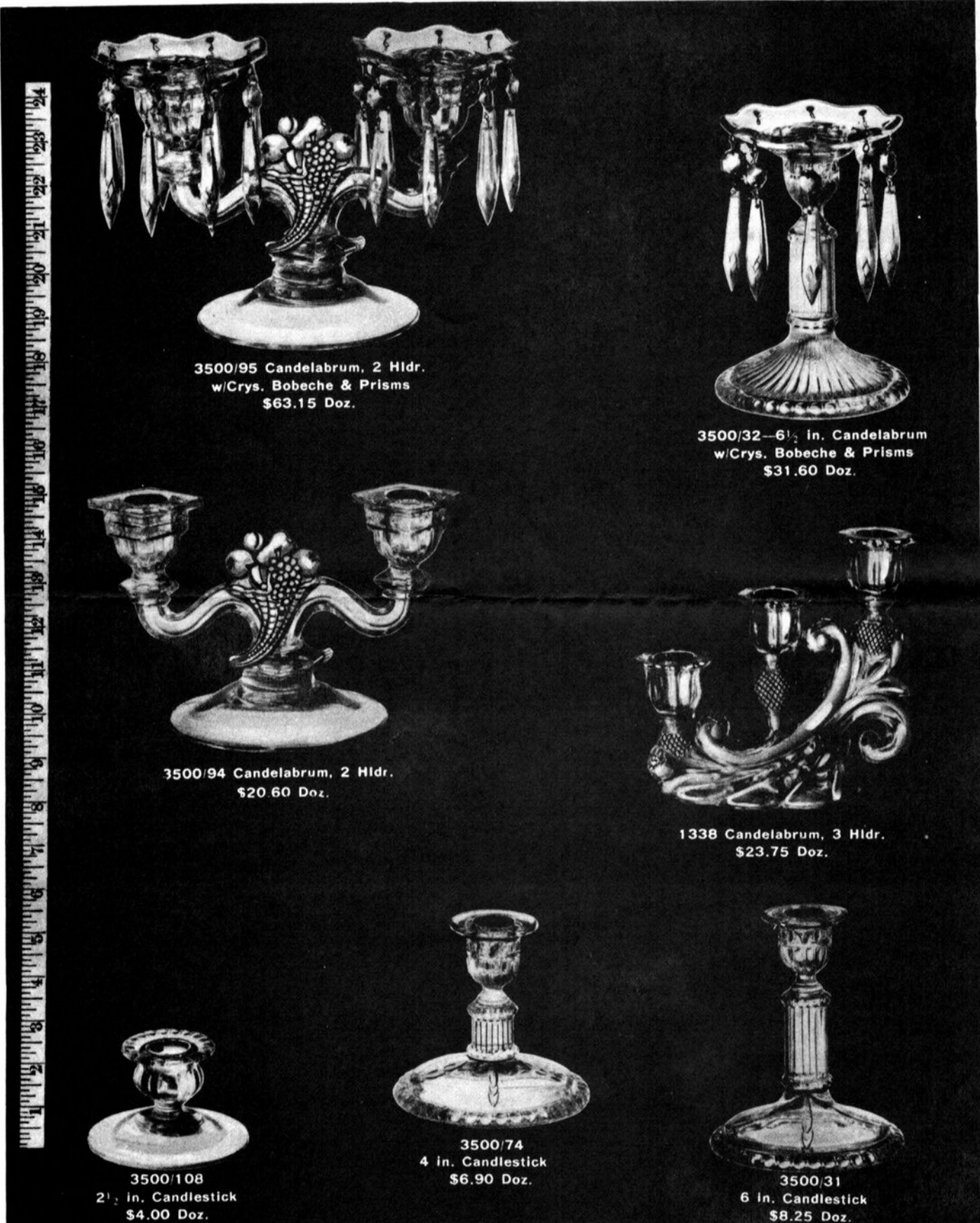


3500/21  
12 in. Ftd. and Hld. Oval Bowl  
\$41.25 Doz.

The prices shown are list prices subject to your usual discounts.



# THE CAMBRIDGE GLASS COMPANY



3500/95 Candelabrum, 2 Hldr.  
w/Crys. Bobeche & Prisms  
\$63.15 Doz.

3500/32—6½ in. Candelabrum  
w/Crys. Bobeche & Prisms  
\$31.60 Doz.

3500/94 Candelabrum, 2 Hldr.  
\$20.60 Doz.

1338 Candelabrum, 3 Hldr.  
\$23.75 Doz.

3500/108  
2½ in. Candlestick  
\$4.00 Doz.

3500/74  
4 in. Candlestick  
\$6.90 Doz.

3500/31  
6 in. Candlestick  
\$8.25 Doz.

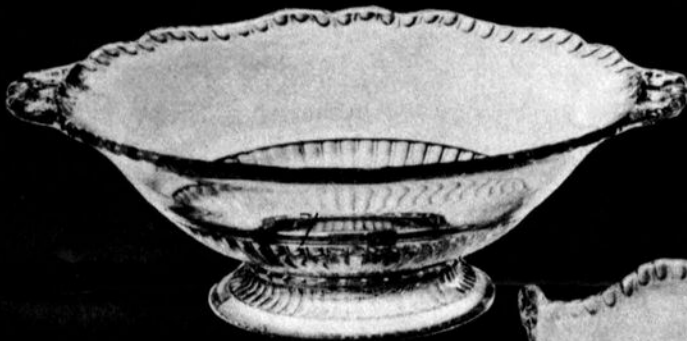
The prices shown are list prices subject to your usual discounts.



3500/27  
3 in Square Bowl (Ram's Head)  
\$20.60 Doz.



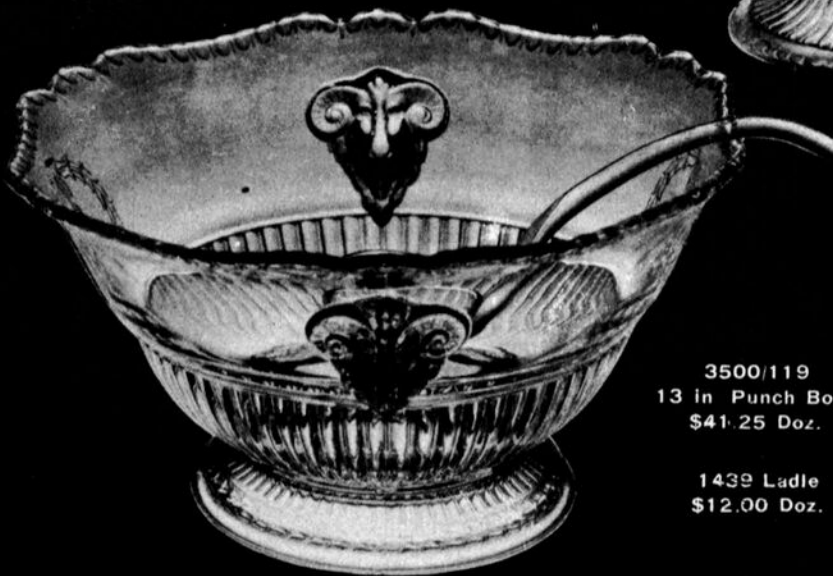
3500/16  
11 in Ftd. Bowl  
\$23.40 Doz.



3500/28  
10 in. Ftd. Bowl, 2 Hdl.  
\$16.50 Doz.



3500/17  
12 in. Ftd. Bowl  
\$23.40 Doz.



3500/119  
13 in Punch Bowl  
\$41.25 Doz.

1439 Ladle  
\$12.00 Doz.

The prices shown are list prices subject to your usual discounts.





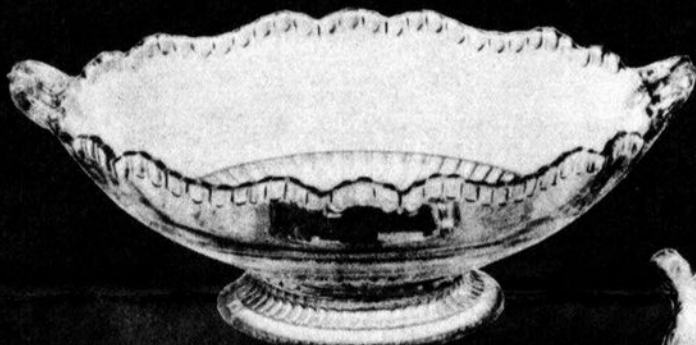
# THE CAMBRIDGE GLASS COMPANY



3500/25  
9 in. Bowl (Ram Head)  
\$20.60 Doz.



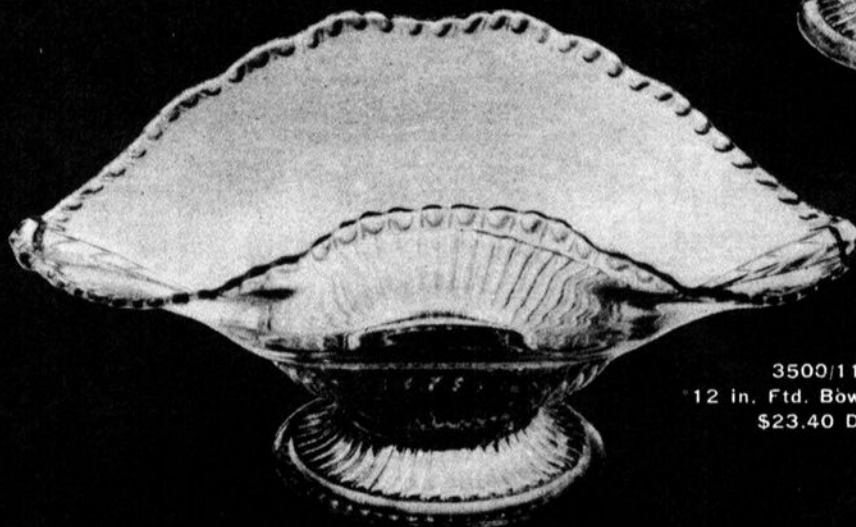
3500/26  
12 in. Fruit Basket  
Ram's Head  
\$20.60 Doz.



3500/115  
9 in. Ftd. Bowl  
2 Hdl. Flared  
\$16.50 Doz.



3500/19  
11 in. Ftd. Bowl  
Fancy Edge  
\$23.40 Doz.



3500/118  
12 in. Ftd. Bowl, Oblong  
\$23.40 Doz.

The prices shown are list prices subject to your usual discounts.

# "YUKON" DECORATION

by PHYLLIS SMITH

Photo shared by NEIL and ETTA UNGER

In trying to study and research Cambridge glass, I sometimes feel as if I am working a puzzle and someone has taken the last piece. Piece by piece, it eventually all seems to fit together, but there are times when it is a bit of a struggle!

One more piece of the picture was added to our puzzle by Neil and Etta Unger when they sent us this photo of the #1402/50 74 oz. Tally-Ho tankard and the #3112 tall sherbet and goblet . . . all displaying the "Yukon" decoration.



#1402/50 74 oz. Tally-Ho Tankard and  
#3112 Sherbet and Goblet  
"YUKON" DECORATION

Until December 1980 we had never heard of the Yukon decoration. It was at that time Doris Isaacs wrote an article for the CRYSTAL BALL (Issue #92) that included four photos of five small pieces of Cambridge glass, all with this Yukon decoration. Her article included the "proof" that this decoration was definitely produced by Cambridge and that the name "Yukon" was correct, because one of the pieces she owned contained not only the triangle c trademark on the bottom, but it also had a factory stock label which bore the name "Yukon." She stated that in the August 1935 issue of "China, Glass & Lamps" there appeared a picture and article that very clearly described

this new "frosted bands decoration" as being available in crystal and colors.

Very little is known about the #3112 stem line. It was first pictured in the CRYSTAL BALL (January 1977, Issue #45) in an article by Jack & Sue Rettig, entitled "Touch of History." The picture was taken from an old trade journal dated June 1935 and the goblet contained not the "Yukon" decoration, but the equally hard to find "Ye Olde Ivy" etching.

Since this stem line is not shown in the 1930-34 Catalog Reprint, we must assume that it was not introduced until 1935. Since it does not appear in the 1940s catalog, it was evidently used for only a very short period of time. (A catalog page from the 1935-37 time period has been found that depicts the #3112 stem line, but it is a xerox copy and the quality is too poor to reprint. However, it does give us proof that it was produced by Cambridge and gives us its line number.)

This Yukon Decoration has also been seen on the #1402/100 Tally-Ho stem line. A photo in the July 1934 issue of "China, Glass & Lamps" featured a table setting which included this #1402/100 stem line, decorated "Yukon" on both crystal and colored bowls. The decoration has been seen on forest green, carmen, royal blue and crystal bowls in this stem line. It would seem reasonable to expect that it may be found in other Cambridge colors as well.

Items shown in the article by Doris Isaacs included a #1327 1 oz. cordial and the #925 After Dinner coffee set on a tray; the small square #616 cigarette box; and the #3500/126 4" Gadroon ashtray. In addition to these items we have also seen a Gadroon sugar. If any of our readers have additional items with this Yukon decoration, please let us hear from you.

Because of the lack of catalog information covering the late 1920s; the time between 1935-40; and the mid-1940s . . . we still need to find a large number of the "lost" pieces for our Cambridge puzzle. With proper research and a great deal of luck, we should continue to find, "an old factory stock label here . . . a picture in an old trade journal there," and little by little we will continue adding pieces that will eventually complete the entire Cambridge puzzle!

# Study Club News

---

## STUDY GROUP #5 - SOUTHERN CALIFORNIA "CALIFORNIA CAMBRIDGE COLLECTORS"

Our September meeting was held in the home of Bill and Betty Losch with eight members present. We viewed the NCC slides on "Figurals."

Elections were held and reelected were President Beverley Hanson; Vice-President Bill Losch; Treasurer Betty Losch; and Secretary Joan McDowell. Raffle prize was won by Ron Rockafellow - a 3-section mandarin gold Gadroon relish.

"Show & Tell" consisted of a crystal #70 Caprice candlestick which Betty Wanser picked up for \$2. Also a mandarin gold Seashell oval bowl, ebony cigarette box or humidor with a silver golfer, a crystal square nut dish, 10" frosted swan, and a crown tuscan Nude with ashtray top. Joan McDowell shared a carmen Mount Vernon 3-section relish, a 12" azurite bowl with ebony base, and a carmen vase with crystal keyhole stem.

submitted by Joan McDowell

---

## STUDY GROUP #6 - NEW YORK STATE "THE FINGERLAKES"

After a few months break from meetings, all of our members regrouped on September 9th at the home of Bob and Marcia Ellis. A picnic lunch was followed by great thoughts on setting up our program for the coming year. We are anticipating the use of two of the Cambridge slide presentations at our October and December meetings. These should be a good refresher tool for all.

Our program consisted of a review of the last Auction by Shirley Ladouceur and a commentary on some of the various prices for which items were sold. Shirley did a fine job considering she was to have presented these facts and figures five months ago when all the information was more current and fresh in her memory. Phyllis Hayes graciously shared copies of some of her research work with us and copies were passed out to all.

Items on display for our "Show & Tell" included: two Pristine Rosepoint oils; pair of #1338 Alpine candlesticks; a Near Cut whiskey glass; small footed Rosepoint tumblers; a pair of blown Jade vase candlesticks; a Dorothy spooner; six mulberry handled lemonade mugs with gold encrusted borders; a pair of mulberry candlesticks; and a Rosepoint mustard.

Next meeting will be held at the home of Jan "D'Amato" Patchen (wedding bells rang out on October 6th) on October 21th, at 1 pm.

submitted by Marcia Ellis

---

## STUDY GROUP #7 - EASTERN OHIO "THE CAMBRIDGE BUFFS"

The Cambridge Buffs met September 7th at the home of Tom and Deanne Gray, with eight members present. A "Quiz" was given on the contents of the new Color Book of Cambridge Glass.

On display for "Show & Tell" were: crown tuscan creamer and nut dish; green Seashell plate; #731 pink top and blue footed sherbet; Jade bud vase trimmed with gold; carmen finger bowl; ebony ashtray with silver decoration; bluebell nut bowl; LaRosa tumbler; Dianthus coaster; mulberry Caprice plate for mayonnaise; Violet Mount Vernon sherbet; Mardi Gras bowl; salts in carmen, mulberry, green and bluebell.

submitted by Deanne Gray

---

## STUDY GROUP #11 - ILLINOIS "THE CAMBRIDGE NUDES"

Report of June 23, 1984 meeting of the Cambridge Nudes Study Group held in the Kersey's room at the Shenandoah Inn (after dinner).

New members Lorrie and Don Mack of Palos Heights, IL and Bob Cole of Libertyville, IL attended their first meeting. Major discussion revolved around the closing of the Imperial factory and the disposition of their molds. Funds were pledged by Nudes members to help purchase the molds in conjunction with other clubs to prevent reproductions. Tony Vimmer to represent the Nudes at the NCC Annual Business Meeting.

submitted by Rose Curnutt



---

## — Classified —

---

**BUYING:** CAPRICE Moonlight or Rosepoint by Cambridge; Rose or Orchid by Heisey; and American, June, Fairfax, Versailles, Trojan, etc., by Fostoria. Nadine Pankow, 207 South Oakwood, Willow Springs, IL 60480. 312/839-5231.

**WANTED:** CAMBRIDGE Stoppers for the following decanters - #1325; #3400/92; #3400/119; #3400/118; #3400/156; #1388; #1387. Also ball stoppers for 4 oz. oils. Any quantity, any condition. Julie Sferrazza, 144 Tanglewood Drive, Somerville, NJ 08876.

**WANTED:** CAMBRIDGE #3122 9 oz. water goblet and 7 oz. sherbet, etched Diane. C. Metcalf, 1045 S. Garrison, Carthage, MO 64836.

**MAIL BID:** CAMBRIDGE Carmen Flying Lady bowl (#3011/40). Close 11/20/84. Right to refuse! Harold Keller, 6244 S. Cook Drive, Littleton, CO 80121.

**FOR SALE:** CAMBRIDGE Square glassware set. Service for 12 nearly complete. Plates, salad plates, cups & saucers, glasses, sherbets, 3 serving bowls, cream, sugar, salt & pepper, 14" round platter, butter dish. \$500. Geraldine Burgess, Poynette, WI 53955. 608/635-2612

**FOR SALE:** CAMBRIDGE light pink #513 13" Draped Lady, small chip on base \$225; amber #158 covered marmalade \$25; light amethyst 9 oz. Georgian tumbler \$15; dark pink round #912 sauce dish Sterling Deco \$30; dark pink #845 ice bucket \$28. Insurance and postage extra. Phyllis Hayes, 313/655-4703.



*"Common sense is genius dressed in its working clothes."*

*—Ralph Waldo Emerson*

## PEG GOTSCHALL

833 N. 6th St.  
Cambridge, Ohio 43725  
Phone: 614/432-5529

- Pair #3400/638 3-lite candleabra  
and #857 14" bowl, ebony with  
Plate Etching #725, still bears  
Marshall Field & Co. label, set.....125.00
- #977 11" 2 handled basket, amber.....25.00
- #1956/1 10" ash tray, smoke.....35.00
- # 3122 5oz footed tumblers, amber with  
crystal stem and foot, (4) for.....38.00
- #W 54 32oz jug, milk glass.....90.00
- #W 123 3" urn, milk glass.....22.00
- #130 Caprice 6" tall comport, moonlight  
blue with fruit and berry decoration  
in signed Sterling Silver, beautiful..135.00
- #3500/37 Gadroon 7" tall comport with  
Minerva Etching, elegant.....55.00
- #4000/165 Cascade covered candy,  
emerald with enamel and gold dec.....60.00
- #SS 33 4" 3 ftd Shell ash tray,  
emerald with enamel and gold dec.....16.00
- #27 Everglade sugar & cream,  
crystal opalescent, beautiful, pair...100.00
- #815 Decagon 7½" plates, pink (3) ea.....7.00
- #1176 8" plates, ebony (4) ea.....12.00
- #1174 6" plates, ebony (3) ea.....9.50
- #253 Pristine individual sugar & cream  
crystal, pr.....15.00
- #2631 Marjorie Near Cut 12" punch bowl  
no foot.....50.00
- #2635 Fernland Near Cut cupped nappy  
rose bowl.....28.00

**POSTAGE & INSURANCE EXTRA**

# LYNN WELKER

2 East Main, New Concord, OH 43762

614/826-7414

## CAPRICE:

#9 12 oz. ftd. tumbler	(6)	14.00
#11 5 oz. ftd. tumbler	(10)	14.00
#2 7 oz. tall sherbet	(3)	12.00
#300 9 oz. goblet	(3)	12.00
#310 10 oz. tumbler, orig. label	(3)	16.00
#180 5 oz. tumbler	(10)	16.00
#41 large sugar & creamer	(pr)	14.00
#201 ice bucket		40.00
#104 3 pc. oil & vinegar	(set)	45.00
#129 3 pc. mayonnaise	(set)	23.00
#235 6" rosebowl		35.00
#3900/72 2 lite candlesticks with 4 #23 bobeches & prisms	(pr)	100.00
#66 13" crimped bowl, ftd.		25.00
#65 11" oval bowl, ftd.		22.00
#75-76 triple oval candlebase		18.00
#38 Amber sugar & creamer	(pr)	35.00
#17 Amber cup & saucers	(3)	25.00
#151 Mandarin Gold 5" hdd. jelly		20.00
#184 Pink 12 oz. tumbler	(5)	30.00
#67 Moonlight Blue candlesticks	(pr)	30.00

## CASCADE:

#1 goblet	(7)	6.00
#9 12 oz. ftd. tumbler(iced tea)	(11)	5.00
#2 sherbet	(11)	5.00
#17 cup & saucer	(4)	10.00
#22 8½" plate	(4)	5.00
#21 6½" plate	(8)	3.00

## DIANE:

#3122 10 oz. ftd. tumbler	(7)	15.00
#3400 8½" plate	(8)	7.00
Regency/Stradivarius cocktail	(2)	30.00

## ELAINE:

#3121 tall sherbet		14.00
#3121 10 oz. ftd. tumbler		14.00
#3900/74 epergne base		20.00
#3500/67 12" serving tray		35.00

## WIDFLOWER:

#3400/52 butter & cover		75.00
#474 9½" pickle		22.00
#628 candlesticks	(pr)	35.00
#1703 6" hat, rare		125.00
#3400 4 ftd. candy		22.00
#299 5" candy & cover, Carmen rose knob, rare		85.00

## ROSEPOINT:

#3121 7 oz. tall sherbet/champagne	(8)	18.00
#3121 3½ oz. wine	(8)	40.00
#3121 3 oz. cocktail	(5)	27.50
#3400/52 butter & cover		125.00
#157 7 oz. ftd. marmalade		90.00
#151 3 oz. mustard & cover		90.00
#1532 3 pc. mayonnaise	(set)	50.00
#3900/116 80 oz. pitcher		125.00
#3900/100 6 oz. cruet		90.00
#3400 10½" cakeplate		40.00

## CHANTILLY:

#3779 10 oz. low goblet	(5)	15.00
#3779 4½ oz. oyster cocktail	(9)	15.00

## CLEO, AMBER DECAGON:

#1075 cream soup & liner	(6)	25.00
--------------------------	-----	-------

Cordials: 12 different stemmed: Write  
Candelabra & Camb. Arms parts: Write

## ALONIS:

#3500 1 oz. cordial	(2)	45.00
#477 9½" pickle	(2)	20.00
#1066 oval cigarette holder		45.00

## ACHILLES:

#3121 3 oz. cocktails	(3)	22.00
#3900/130 7" ftd. hdd. candy		25.00

## CORSAGE:

#3116 10 oz. goblets	(6)	15.00
----------------------	-----	-------

## HARVEST:

#3750 12 oz. iced teas	(5)	12.00
------------------------	-----	-------

## LAUREL WREATH:

#3700 stems		10-14.00
#3139 stems		10-12.00

## MONTROSE:

#3700 3 oz. cocktails, orig. labels	(8)	12.00
-------------------------------------	-----	-------

## PRESSED ROSEPOINT:

Low Wine: Amber, Forest Green		55.00
Royal Blue		65.00
Tall wine: Crystal		60.00

## #3011 Nude Stemware:

Carmen goblet		110.00
Carmen claret		100.00
Carmen ivy ball		145.00
Forest Green claret		80.00
Forest Green champagne		100.00
Amethyst cocktail		70.00
Amethyst brandy		75.00
Amethyst goblet		100.00
Amber brandy		75.00
Amber claret		80.00
Royal Blue claret		100.00

## FLOWER FIGURES, FIGURALS:

Pink 6½" Bashful Charlotte		125.00
Crystal 6½" Bashful Charlotte		35.00
Amber Rose Lady, underbase chip		125.00
Crystal Geisha, base damage		300.00
Peachblo covered turkey, minor inside bruise		300.00
Crystal small Buddha		125.00
Lobster plate, shown in Sept. 84 Crystal Ball, page 13		25.00

## SWANS:

8½" Crown Tuscan		125.00
3½" Mandarin Gold		30.00
3½" Emerald (dark)		35.00
3½" Crown Tuscan		25.00
3½" Carmen		70.00
6½" Light Emerald, old style,sgd.		75.00

## CROWN TUSCAN:

#1300 8" vase, gold Portia		75.00
#274 10" vase, gold Rosepoint		75.00
#3400 8" 3 part relish, gold Rosepoint		60.00
#1309 5" rosebowl, gold Portia, signed		100.00
Other pieces: plain & gold decorated: Write		

## MISCELLANEOUS:

#1066 Carmen ivy ball		30.00
#1066 Forest Green ivy ball		25.00
Mandarin Gold Georgian basket		50.00
Milkglass Mt. Vernon ivy ball, label		30.00

## COLUMBUS, OHIO ANTIQUÉ FLEA MARKET

Ohio State Fairgrounds - Lausche Building  
Off I-71 Exit 17th Avenue - Columbus, Ohio

### NOVEMBER 11th

Sunday Only - 7 A.M. to 4 P.M.  
Show Admission \$1.00 - Under 12 Free  
150 QUALITY DEALERS

SELLING Advertising Art Deco, books, Cambridge, clocks, coins, collectibles, Depression glass, dolls, Fiesta, fine early furniture, Heisey, jewelry, lamps, oak furniture, post cards, pottery, good primitives, tools and print shop items.

### STOCKWELL PROMOTIONS

4214 North High Street  
Columbus, Ohio 43214  
(614) 267-8163/263-6830/885-2352

NEXT SHOW : **DECEMBER 2nd**



## ALL GLASS SHOW & SALE

Sponsored by:

"TUSCAN CROWNS" STUDY GROUP OF THE

*National Cambridge Collectors, Inc.*

Featuring:

CAMBRIDGE, Heisey, Fostoria, Fenton, Carnival,  
DEPRESSION GLASS, China, Pottery and More.

**FRIDAY, NOV. 23, 1984**  
6:00 p.m. - 10:00 p.m.

**SATURDAY, NOV. 24, 1984**  
**SUNDAY, NOV. 25, 1984**  
10:30 a.m. - 5:00 p.m.

Donation:  
**\$1.75 ea.**

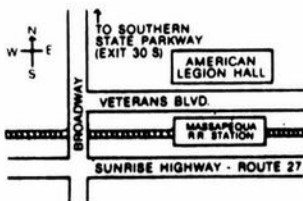
Admit 2 at:  
**\$1.50 ea.**  
WITH THIS AD

### AMERICAN LEGION HALL

66 Veterans Blvd.  
Massapequa, N.Y.  
(516) 798-9661

(OPP. MASSAPEQUA R.R. STATION)

**FOR INFORMATION:**  
R. Serzanin - (516) 273-5084



## STAGE COACH ANTIQUE MALL

*(formerly White Pillars Antiques)*

7525 East Pike  
Norwich, OH 43767  
**614/872-3720**

MANY DEALERS. . .

PLENTY OF PARKING. . .

WIDE SELECTION OF GLASS  
AND POTTERY  
FURNITURE AND  
GENERAL LINE!

**BUY and SELL**

**OPEN YEAR ROUND**  
**Weekdays - 10 AM - 5:30 PM**  
**Sunday - 12 noon - 5:30 PM**  
**Summer Evening Hours - by Chance!**

Located 9 miles E. of Zanesville, OH, on I-70 to Norwich Exit No. 164 - then ½ mile W. on Route 40.



# THE FANTASTIC SAN FRANCISCO DEPRESSION ERA

# GLASS CHINA & POTTERY SHOW & SALE

(EAST COAST DEALERS EXHIBITING)

**SAT NOV. 17th, 1984 10am-5pm.**  
**SUN NOV. 18th, 1984 10am-5pm.**

AT

## THE HALL OF FLOWERS

9TH AVE. & LINCOLN WAY  
INSIDE GOLDEN GATE PARK

**Admission \$2.50**  
**(\$2.00 WITH THIS TICKET)**  
FOR YOU & YOUR PARTY

For Information Contact  
"UP TO PARR"  
588 Guerrero Street  
San Francisco, CA 94110  
(415) 552-9337

REFERENCE BOOKS AND A WHOLE LOT MORE  
GOOD FOOD

# DEALERS



# DIRECTORY

NOTE: When writing to the Dealers listed here, please enclose a SASE!

<p><b>EVELYN M. ALLEN</b> 135 Cynthia Street Heath, Ohio 43055 Mail Order &amp; Shows 614-522-1635 <b>SPECIALIZING IN CAMBRIDGE GLASS!</b></p>	<p><b>BENICIA ANTIQUE SHOP</b> 305 First Street Benicia, California 94510  OPEN 11 AM - 5 PM Closed Monday Z. E. LOPES 707-745-0978</p>	<p><b>CHARLES MIKULIK</b> Box 416 Elizabeth, N.J. 07207  — COLLECTOR — Always paying good prices for <b>CAMBRIDGE CAPRICE</b> in all colors 201-688-1144 <b>CARRY MOST TYPES OF ANTIQUES</b></p>
<p><b>BLUE BONNET SHOPPE</b> at The Main Place 102 West Mistletoe at Main San Antonio, TX 78212.....512/736-4900 Antiques, Crystal, Collectibles! Open 7 days!</p>	<p><b>VISIT HISTORIC BENICIA</b> and its 28 shops Off Interstate #80 ..... ..... North of San Francisco</p>	
<p><b>BERKELEY ANTIQUES</b> 69 Berkeley St. Boston, MA 02116 George or Frank 617-426-1048 <b>CAMBRIDGE, HEISEY, GENERAL LINE</b></p>	<p><b>ANDREJCAK'S ANTIQUES</b> 14533 Bayes Ave. Lakewood, Ohio 44107 Joe &amp; Karen Andrejcek 216-226-3417 <b>SHOWS ONLY — CAMBRIDGE — FENTON — CHINA</b></p>	<p><b>HENDERSON'S ANTIQUES</b> 303 Guilford Ave., Woodfield, OH 43793 Mary &amp; Wilbur Phone: 614 472-1133 <b>SPECIALIZING IN CAMBRIDGE GLASS</b> Shows, Mail &amp; Stagecoach Antique Mall</p>
<p><b>D &amp; D ANTIQUES</b> Columbus, Ohio  DICK SLIFKO <b>SHOWS ONLY</b></p>	<p><b>THE HITCHING POST</b> 7467 S. R. 88 Ravenna, OH 44266 Ph. 216-296-3686 D. McDaniel <b>CAMBRIDGE — HEISEY — GENERAL LINE</b></p>	<p><b>GLASS RAINBOW of California</b> P.O. Box 127, Elk Grove, CA 95624 Neil &amp; Ervina McCartney Hours: 9am-4pm &amp; 7-9pm 916/685-5485 <b>BY APPOINTMENTS &amp; SHOWS!</b></p>
<p><b>THE GLASS CUPBOARD</b> 39 Shire Oaks Drive Pittsford, New York 14534 Marcia Ellis 716-586-7596 <b>CAMBRIDGE ONLY INQUIRIES INVITED</b></p>	<p><b>GEORGE HOFFMAN ANTIQUES</b> 129 South 4th Street Newark, Ohio 43055 614-345-8021</p>	<p><b>GREEN ACRES FARM</b> 2678 Hazelton Etna Rd., Pataskala, OH 43062 (State Route 310 North) Sat. &amp; Sun. 1-7 PM 614/927-1882 <b>Antiques, Crystal Glass and Collectibles</b></p>
<p><b>THE ANTIQUERY</b> 42 E. Main St., St. Rt. 40 New Concord, Ohio 43762 Ph. 614-432-4483 Richard Bennett <i>Specializing in Cambridge Glass</i></p>	<p><i>YOU CAN ADVERTISE YOUR ANTIQUE SHOP HERE! 1 inch - \$12 for 12 months</i></p>	<p><b>1886 HOUSE</b> East Schodack, N.Y. 12063 MAIL and SHOWS Laurie Cruise 518-477-5895 <b>CAMBRIDGE - NORITAKE - AZALEA - D.G.</b></p>
<p><b>joyce's antiques</b> Bought and Sold Specializing in HEISEY • CAMBRIDGE • VERLYS • AMERICAN GLASS P O Box 114, Albertson, N Y 11507 (516) 499-3396</p>		<p><b>SALT FORK ANTIQUES</b> 10 miles North of Cambridge Exit 54 off I-77, then 1/2 mile East Hours: Tuesday thru Saturday 12 noon - 5 p.m. 614/432-2020 614/439-4039</p>
<p><b>THE GLASS MENAGERIE</b> Unit 4, Plaza 20, Route 50 North Easton, MD 21601 Barbara &amp; Bill Danels 301/822-8794 <b>SPECIALIZING IN GLASSWARE OF THE DEPRESSION ERA</b></p>	<p><b>AL STEELE</b> Westerville, Ohio 614-882-6483 or 614-882-7124 Mail Orders and Shows Only <b>HEISEY — CAMBRIDGE — PATTERN GLASS</b></p>	<p><b>BETTY'S ICE HOUSE ANTIQUES</b> 517 Fulton Street Wausau, Wisconsin 54401 Quality Antiques Cambridge - Heisey - General Line Betty R. Puestow Hours 1-5 Daily 715-848-7145 or by appointment</p>
<p><b>MARGARET LANE ANTIQUES</b> 2 E. Main St., New Concord, OH 43762 Lynn Welker 614/826-4418 <b>CAMBRIDGE GLASS MATCHING SERVICE</b> Hours Mon.-Fri. 1-5 PM or by Appointment</p>	<p><b>SHIRLEY S. LAOUCEUR</b> Antiques and Collectibles Specializing in Cambridge Glass <b>BY APPOINTMENT</b> 7597 Daphne Drive 315-458-5297 No. Syracuse, NY 13212</p>	<p><b>THE FLOWER FROG</b> 106 E. Cairo Dr., Tempe, AZ 85282 <b>MAIL ORDER and SHOWS</b> Pat Binkley 602/967-1373 <b>CAMBRIDGE HEISEY FOSTORIA</b></p>



*A nonprofit organization dedicated to the preservation and study of Cambridge Glass*

**National Cambridge Collectors, Inc.**  
P O Box 416, CAMBRIDGE, OHIO 43725

You Are Cordially Invited  
To Become A Member Of The

NATIONAL CAMBRIDGE COLLECTORS, INC.

Benefits derived from membership include: receipt of our club publication, The Cambridge CRYSTAL BALL; informative Quarterly Meetings; Antique Shows Auctions; and other special events.

The Cambridge CRYSTAL BALL is published the first of each month. This newsletter contains educational and interesting articles, questions and answers, information on reproductions and reissues, notices of all club functions, classified advertisements, dealers directory, and many other features of interest to collectors of Cambridge Glass.

Yearly dues are \$13.00 for Individual Members and \$3.00 for each Associate Member. All members have voting rights, but only one issue of the CRYSTAL BALL will be mailed per household.

Name (please print) \_\_\_\_\_ \$13.00

Mailing Address \_\_\_\_\_

City \_\_\_\_\_ State \_\_\_\_\_ Zip \_\_\_\_\_

Associate Members: (Must be at least 12 years of age and living in the same household.)

1. Name \_\_\_\_\_

2. Name \_\_\_\_\_

3. Name \_\_\_\_\_

Total number of Associate Members \_\_\_\_\_ @ \$3.00 each ..... \$ \_\_\_\_\_

TOTAL AMOUNT ENCLOSED: \$ \_\_\_\_\_

Please make check payable to: NATIONAL CAMBRIDGE COLLECTORS, INC.

Recommended by \_\_\_\_\_

SUPPORT N.C.C. Give a "Gift of Membership!"

## QUARTERLY MEETING

NOVEMBER 10, 1984

ELKS CLUB - downstairs Banquet Room  
1048 Wheeling Avenue, Cambridge, Ohio  
(S.W. corner of Wheeling Avenue and 11th Street)  
Parking and Entrance at the rear of the building.

Cocktail Hour (pay bar) 6 PM

Buffet Dinner - \$8.50 each - 7 PM  
(Reservations Required For Dinner)

Quarterly Meeting 8 PM

(Reservations not required to attend Quarterly Meeting only.)

PROGRAM: "Cambridge Reproductions"  
Presented by Lynn Welker and Frank Wollenhaupt

RESERVATION DEADLINE IS NOVEMBER 3rd!

If you are reading this after November 3rd and would like to attend the Dinner and Meeting, Please phone either Willard Kolb 614/695-0695 or Janice Hughes 614/432-7823 and they may still be able to accept your reservation.

NOVEMBER 1984

National Cambridge Collectors, Inc.

P. O. Box 416 Cambridge, Ohio 43725

FIRST CLASS MAIL  
U S POSTAGE  
**PAID**  
So Vienna, Ohio  
45369  
Permit No 15

**FIRST CLASS MAIL**

