

Cambridge



Crystal Ball

ISSUE NO. 140

DECEMBER 1984

Published monthly by the NATIONAL CAMBRIDGE COLLECTORS, Inc.
To encourage and to report the discovery of the elegant and boundless product
of the Cambridge Glass Company, Cambridge, Ohio



Best Wishes

FOR A MERRY CHRISTMAS AND A HAPPY NEW YEAR

MEMBERSHIP RENEWAL NOTICE

If the date on your
address label is ..

12 - 84

This is your LAST ISSUE of the CRYSTAL BALL.
Please renew NOW!



From your
Officers, Board of Directors
and
CRYSTAL BALL Staff

CAMBRIDGE CRYSTAL BALL

Official publication of National Cambridge Collectors, Inc., a non-profit corporation with tax exempt status. Published once a month for the benefit of its members.

Membership is available for individual members at \$13 per year and additional members (12 years of age and residing in the household) at \$3 each. All members have voting rights, but only one *Crystal Ball* will be mailed per household.

Back issues of the *Crystal Ball* are available (beginning with Issue No. 1, May 1973) for members only. Cost \$5.60 each or 12 issues for \$7.

1984-85 OFFICERS & COMMITTEE CHAIRPERSONS

PRESIDENT	Willard P. Kolb
VICE-PRESIDENT	David B. Rankin
SECRETARY	Janice Y. Hughes
TREASURER	William C. Smith
SERGEANT-AT-ARMS	Marybelle Moorehead
BUDGET & FINANCE	David B. Rankin
BY-LAWS	David B. Rankin
CONVENTION	David B. Rankin
MEMBERSHIP	Phyllis D. Smith
MUSEUM	Billy Harbaugh
PROGRAM & ENTERTAINMENT	Frank Wollenhaupt
PROJECT	Willard P. Kolb
PUBLIC RELATIONS	William C. Smith
PUBLICITY	Joseph Andrejcek
STUDY GROUP ADVISOR	Evelyn M. Allen
1985 AUCTION	Lynn M. Welker
1985 ANTIQUE SHOW	Joy McFadden
1985 FLEA MARKET	Larry F. Hughes
CRYSTAL BALL EDITOR	Phyllis D. Smith

CLASSIFIED ADVERTISING RATES

5c per word \$1.00 minimum
 We cannot mix type size in classified advertisements. Abbreviations and initials will count as words. Payment in full MUST accompany all ads.

DISPLAY ADVERTISING RATES

(camera ready ads preferred)

	Members	Non-Members
1 8 page (9 items)	\$4.00	\$6.00
1 4 Page (20 items)	7.00	10.00
1 2 page (20 items)	12.00	18.00
3 4 page	17.00	25.00
Full page (50 items)	22.00	33.00

DEALERS DIRECTORY

5 line maximum \$12.00 for 12 months
 Cambridge *Crystal Ball* assumes no responsibility for items advertised and will not be responsible for error in price, description or other information.

Advertising copy, articles, club news and notices must be in our hands by the 10th of each month to assure publication in our next issue. Advertisements containing reproductions will not knowingly be accepted unless clearly stated.

Opinions or information stated in any signed article or letter printed in the *Crystal Ball* are those of the authors and may or may not agree with National Cambridge Collectors, Inc. The Editor reserves the right to refuse and to edit any material submitted for publication so as to conform with the editorial style of the *Crystal Ball*.

PLEASE ADDRESS ALL CORRESPONDENCE TO

National Cambridge Collectors, Inc.
 P.O. Box 416 Cambridge, Ohio 43725

PRESIDENT: Willard Kolb 614/695-0695

SECRETARY: Janice Hughes . . . 614/432-7823

EDITOR: Phyllis Smith 513/323-3888

NCC MUSEUM of Cambridge Glass is located on U.S. Route 40, 1 8 mile east of I-77 near Cambridge. Hours: 12 noon to 4 PM - Wednesday thru Sunday. (March thru November)

PLEASE NOTIFY US IMMEDIATELY OF ANY CHANGE IN YOUR ADDRESS

Please enclose a SASE when requesting information

CAMBRIDGE GLASS BOOKS FOR SALE

by National Cambridge Collectors, Inc.

* **COLORS IN CAMBRIDGE GLASS**
 (128 pages - 60 color plates - fully indexed)
 Hardbound with 1984 Price Guide \$19.95

* **1930-34 CAMBRIDGE GLASS CO. CATALOG REPRINT**
 (250 page reprint of original catalog)
 Hardbound with 1982 Price Guide \$14.95

* **1949-53 CAMBRIDGE GLASS CO. CATALOG REPRINT**
 (300 page reprint of original catalog)
 Hardbound with 1983 Price Guide \$14.95

* **1956-58 CAMBRIDGE GLASS CO. CATALOG REPRINT**
 (164 page reprint of original catalog)
 Paperback \$6.95

1982 PRICE GUIDE
 for 1930-34 catalog reprint Postpaid \$2.25

1983 PRICE GUIDE
 for 1949-53 catalog reprint Postpaid \$2.25

* **NCC MEMBERS ONLY:** *These publications are available at 10% discount - or all four (4) at one time for \$50.00.*

by Mary, Lyle and Lynn Welker

CAMBRIDGE GLASS CO.
 (120 pages of reprint from 8 old catalogs)
 Paperback \$6.95

CAMBRIDGE GLASS CO. BOOK II
 (119 pages of reprint from old catalogs)
 Paperback \$6.95

CAMBRIDGE, OHIO GLASS IN COLOR II
 (15 color pages with descriptions and notes)
 Spiralbound \$5.95

by Harold and Judy Bennett

1903 CAMBRIDGE GLASS CO. CATALOG REPRINT
 (106 page reprint of an original catalog)
 Paperback \$7.50

Address your orders to:

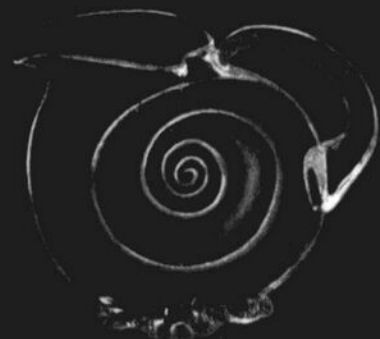
BOOKS
 National Cambridge Collectors, Inc.
 P.O. Box 416
 Cambridge, OH 43725

Please add \$1.00 (P & I) per order.
 (Not required for Price Guide)
 Ohio residents please add 6% state sales tax.

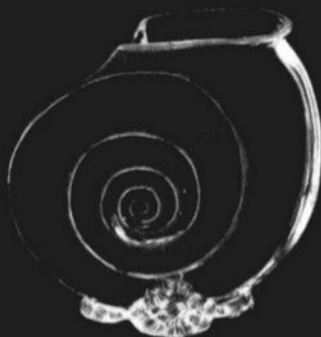
DEALER DISCOUNTS AVAILABLE - PLEASE WRITE!



SEA SHELL



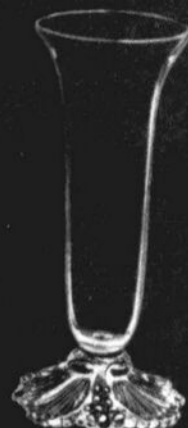
45 52 oz. Jug



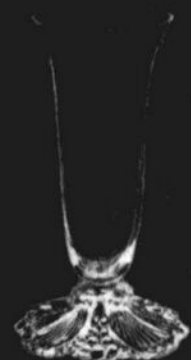
46-7½ in.
Shell Flower Holder



47-9½ in.
Cornucopia Vase



49-10½ in. Belled Vase



48-9 in. Belled Vase



70-7 in.
Candlestick w/Prism



73-Reflector Candlestick



50-8 in.
Dolphin Candlestick



1612-9½" 1 Lite Candelabrum
(29 bobèches-10 No. 10 prisms)



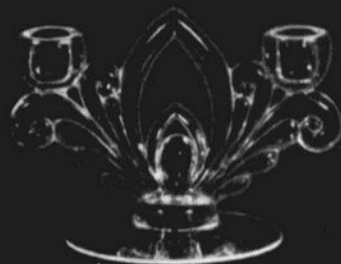
66-4 in. Candlestick



78-2 lite Candelabrum
(No. 19 Bobeche & No. 1 Prisms)



79-2 lite Candelabrum
(No. 23 Bobeche & No. 1 Prisms)



Caprice 72-6 in.
2-Lite Candlestick

CAMBRIDGE JUGS

PART IV

by MARK NYE

The Gyro Optic line was in production by March of 1938, the first dated reference I have for the line, and from it our next three jugs evolved.

The 1940 Cambridge catalog devoted two pages to Gyro Optic which, at that time, included stemware, finger bowl, two flat tumblers, 15 vases or flower holders of assorted styles and sizes, tall candy box and cover, and the three pitchers. The 1940 catalog was offering the vases in crystal, mocha and moonlight blue while the rest of the line, including the jugs, were being made in these colors plus LaRosa and Pistachio. The line, with the exception of the tumblers, was discontinued as #3143 Gyro Optic, prior to 1949.

The basic shapes of the three Gyro Optic jugs are not unique to the line. The #3134/38 80 oz. Ball shaped jug with ice lip is obviously nothing more than the #3400/38 jug with the added Gyro Optic pattern. Likewise, the Gyro Optic #3134/40 83 oz. ice lipped jug is based on the #119 jug and the #3134/39 86 oz. ice lipped Gyro Optic jug is basically the Pristine #71 jug with an ice lip and the Gyro Optic pattern.

We have another jug from the Pristine line, this time the Pristine #70 20 oz. ice lipped jug. 1940 saw this little juice or milk pitcher being made in crystal only and not being etched or otherwise decorated; however, it may have been decorated during the years prior to 1940. Like the other Pristine jugs, it too was discontinued prior to 1949.

The #1561 86 oz. jug with ice lip is simply the Pristine #71 jug with the added ice lip and yet, the jug was, at least in 1940, not listed as part of the Pristine line. Regardless of this, the #1561 jug was a popular blank, at least in 1940, for decorating. According to the January 1940 price list, this jug was being etched Rosepoint, Blossom Time, Chantilly, Elaine and Wildflower. In turn, these etched jugs were available plain, gold encrusted, or with a gold edge. However popular the #1561 jug was in 1940, it fell victim to the "terrible 40s" when so many of the older Cambridge lines were discontinued.

The Sea Shell or Shell line was introduced in 1935 and at that time the line was advertised as being made in amber, carmen, royal blue, amethyst, forest green, crystal and coral. The line, or parts of it, was also made in moonstone (which is crystal frosted on one side), and windsor blue.

The Shell #45 52 oz. jug or Snail water pitcher (as it was sometimes called), is not known to have been made in coral. This jug is rare in any of the colors and lucky is the collector who has this jug. 1940 saw the jug being made in crystal only as Shell and Krystolshell and while some Shell items remained in the Cambridge line until the final days, the #45 jug was gone by 1949.

The last of the 1940 jugs is also one of the most unusual, the #1560 80 oz. ice lipped jug with two handles. The January 1940 price list described it as "#1560 80 oz. 2-handle carrier and server" and stated it was available in crystal, amber and moonlight. Again, lucky indeed is the collector who has this jug in any color, much less all three. It too, like most of the 1940 jugs, was no longer a part of the Cambridge line as the 1940s drew to a close.

And so we come to the end of the Cambridge jugs being sold in 1940. The 34 jugs represented many of the major lines sold by Cambridge during the 1930s and 1940s. To have each of these jugs in a collection would certainly give the owner a fair sampling of Cambridge production during that era.

To answer the question posed earlier regarding the number of jugs it would take to have each of the 1940 jugs in each color it came in during the 1940s, one would need a total of 115 jugs. Now, if you also want all the etchings and decorations being used on these jugs in January 1940, add another 87 jugs to your "wants" list. The 39 jugs we started with have suddenly turned into 202 jugs, all from the January 1940 catalog. Since many of these same jugs were made in additional colors and with other etchings and decorations during the 1930s, it is conceivable that if these were added to the 202, the grand total could approach 300 jugs. Hard to believe, but true!

The new book "Colors in Cambridge Glass"

continued on page 6



JUGS



3143/38—80 oz. Ball, Ice Lipped
Gyro-Optic



3143/40—83 oz. Ice Lipped
Gyro-Optic



3143/39—86 oz. Ice Lipped
Gyro-Optic



Pristine 70—20 oz. Ice Lipped



Shell 45—52 oz.



1561—86 oz. Ice Lipped



1560—80 oz. Ice Lipped
2 Handles

CAMBRIDGE JUGS . . . continued from page 4

pictures three jugs described in this series of articles, but in colors not listed here. The #3400/141 80 oz. jug and the #1206 76 oz. Twisted Optic jug are shown in Carmen and the #3400/114 64 oz. ball jug is pictured in Crown Tuscan.

In future articles jugs from the 1949 period as well as those from the 1920s and 1930s will be covered.

to be continued



Club News

National Cambridge Collectors, Inc.
Quarterly Meeting
November 10, 1984
Elks Club, Cambridge, OH

The meeting was called to order at 8:05 PM by President Kolb. In attendance were nine Board members and 51 members and guests from two states.

The minutes of the previous meeting held on August 19, 1984 were read by Janice Hughes and approved.

The Treasurer reported the MUSEUM will probably be paid off in March by using the Treasury notes. An additional \$20,000 is available in checking so work on the interior of the MUSEUM will be done during the closed period.

COMMITTEE REPORTS

CONVENTION: President Kolb reported for Chairman Dave Rankin. The 1985 Convention will be June 28, 29 and 30 at Shenandoah Inn. Mark Nye will be the Banquet speaker.

CRYSTAL BALL: Editor Phyllis Smith reported there were 20 pages in the November issue.

MEMBERSHIP: Chairman Phyllis Smith reported we now have 1213 members.

PROJECT: Chairman Willard Kolb reported the next cup plate is being ordered and may be in carmen.

AUCTION: Chairman Lynn Welker reported the Auction will be the last weekend in February. He has all the glass needed.

PUBLIC RELATIONS: Bill Smith reported they did not attend the Redlands Show but did go to St. Charles, Missouri last month. They will be attending the Clearwater, Florida Show in March.

ACQUISITIONS: Bill Smith reported they have purchased a Near Cut Daisy arch foot decorated tumbler. President Kolb stated anyone wishing to, can donate money to be used only to purchase glass for the MUSEUM.

OLD BUSINESS: President Kolb reported a weed eater has been purchased for the MUSEUM.

NEW BUSINESS: President Kolb reported the MUSEUM will be open next year from March 1 through October 31.

President Kolb announced the Nominating Committee as follows: Wilbur Henderson, Woodsfield, Ohio; Norma Warden, Navarre, Ohio; Naomi Ophile, Bolivar, Ohio; and Bill Smith, Chairman, Springfield, Ohio.

Don Armbricht asked about reprinting of the Color Book. Bill Smith stated this will be done after the first of the year and will include an updated price guide. New price guides for the 1930-34 Catalog Reprint and the 1949-53 Catalog Reprint should be completed by that time.

President Kolb auctioned several pieces of glass.

Frank Wollenhaupt and Lynn Welker presented a program on reproductions and "Show & Tell."

A motion was made by Lynn Welker to adjourn at 9:25 PM.

JANICE HUGHES, SECRETARY



Monument to the Lexington Minute Men


LEXINGTON
1630


PERMANENT DISPLAYS AND SALES OFFICES

THE CAMBRIDGE GLASS CO.
184 Fifth Ave. New York, N.Y.

A. H. RENWICK
303 Cooper Bldg.
860 South Los Angeles St.
Los Angeles, Calif.

A. L. INGALLS
401-2 Insurance Bldg.
Dallas, Texas

THE CAMBRIDGE GLASS CO.
Room 1547
The Merchandise Mart
Chicago, Illinois

JOHN A. NIXON
824 Filbert Street, 2nd Floor
Philadelphia, Pa.

W. A. SONGSTER
1601 Emerson Street
Denver, Colo.



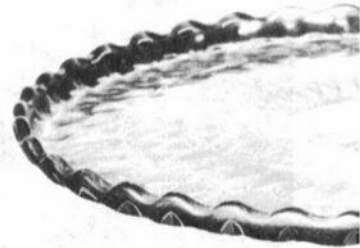
THE CAMBRIDGE GLASS CO.
CAMBRIDGE, OHIO



LEXINGTON AMBER C



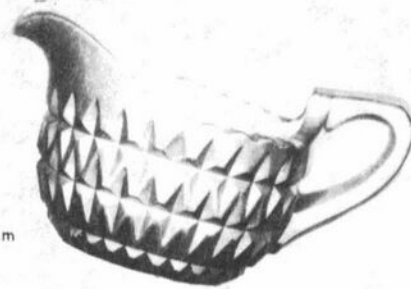
No. 1—8 inch
Footed Fruit Bowl



No. 1
Sar

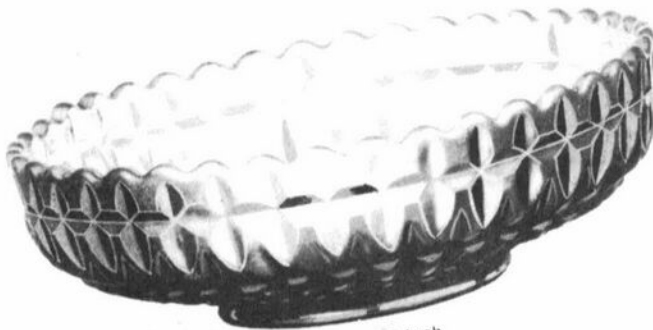


No. 7
Sugar and Cream

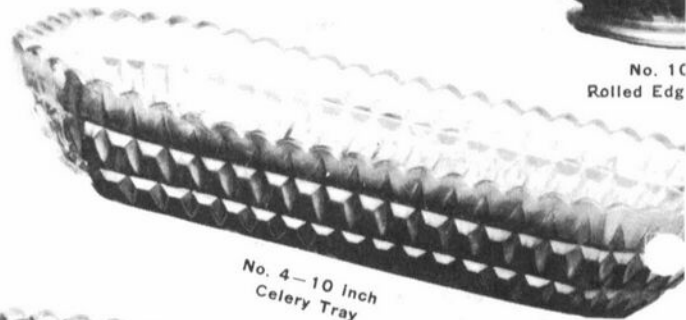


LEXINGTON

Consists of 3 piec
illustrated on this
dozen average, si
counts. Plus p
Cambridge, Ohio.
pieces of ONE
obtain this price.



No. 12—9 inch
Cabaret Bowl

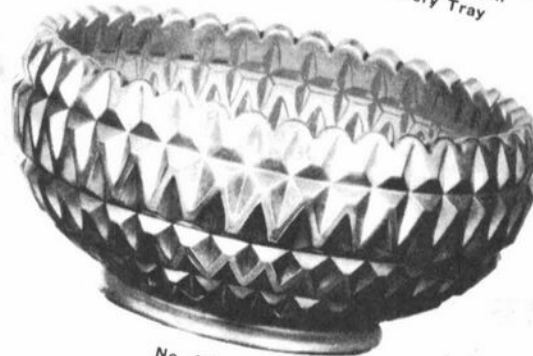


No. 4—10 inch
Celery Tray

No. 10
Rolled Edg



No. 8—5½ inch
Candy Jar and Cover
Round



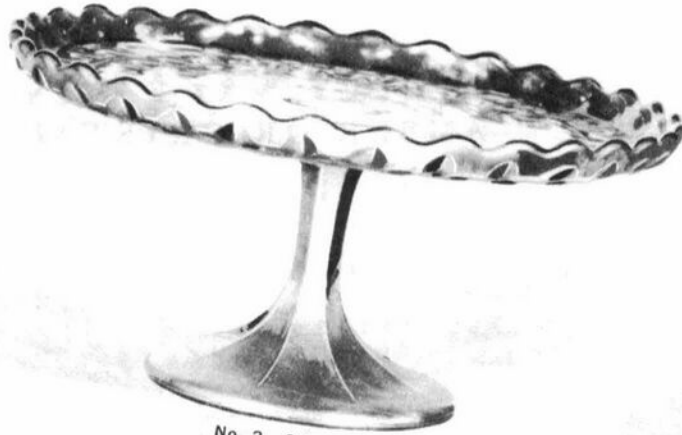
No. 13—7 inch
Rose Bowl



GTON CRYSTAL



1/2 Inch
Plate



No. 2—9 Inch
Footed Cake

OUTLET No. 1
 Each of the 14 articles
 Price \$10.65 per
 to your usual dis-
 e charge, f. o. b.
 e full outlay of 42
 must be ordered to
 cage Charge \$1.00 Bbl.



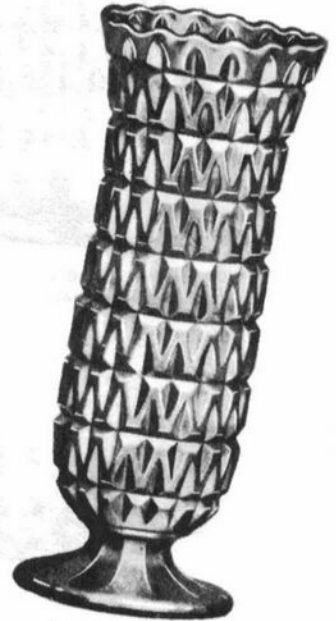
No. 9—6 inch
Ice Tub



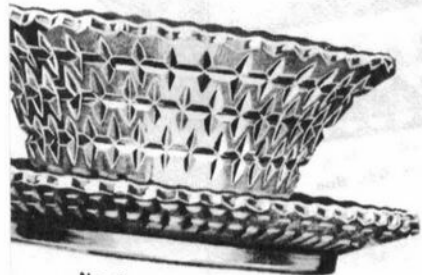
1/2 Inch
Flower Centre



No. 11—9 1/2 Inch
Flared Flower Centre



No. 6—8 inch
Footed Vase



No. 3—2 piece
Salad Dressing Set



No. 5—7 Inch
Cheese and Cover



Extra Piece to make up Fruit Set

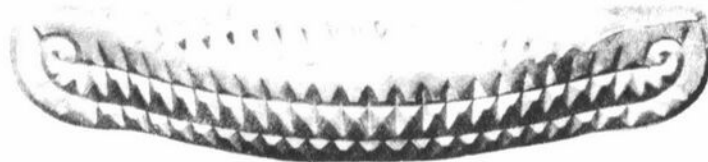


No. 23—4 1/4 Inch
Fruit

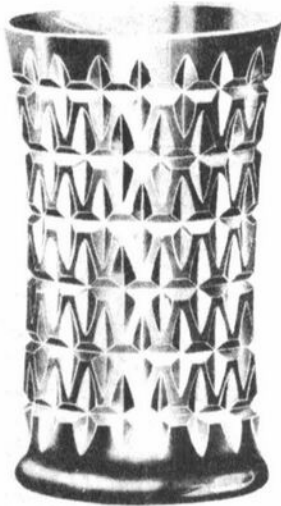
PRICE \$2.65 Doz.



LEXINGTON AMBER OR CRYSTAL



No. 21—9 inch
Canoe Pickle



No. 22—6 inch
Flower Holder

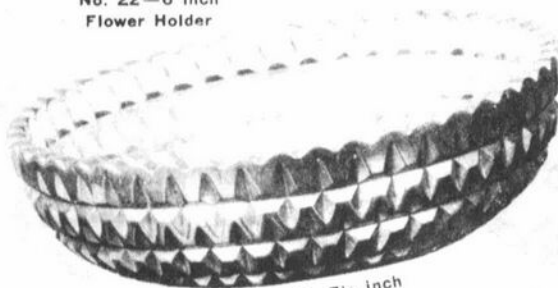
LEXINGTON OUTLAY No. 2

Consists of 6 pieces each of the 8 articles illustrated on this page. Price \$5.65 per dozen average, subject to your usual discounts. Plus package charge, f.o.b. Cambridge, Ohio. The full outlay of 48 pieces of ONE color must be ordered to obtain this price.

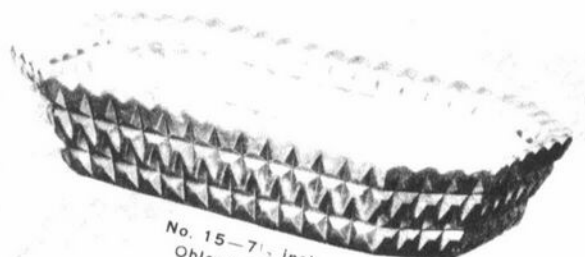
Package Charge .80c Keg.



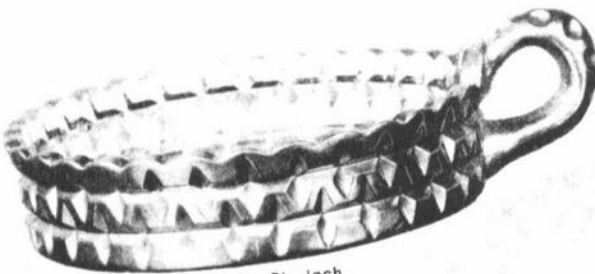
No. 20—5½ inch
Footed Conserve



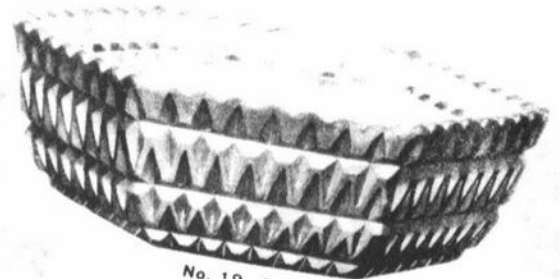
No. 18—7½ inch
Round Bon Bon



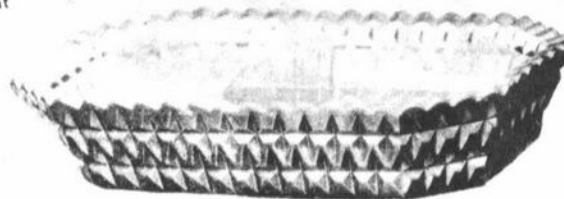
No. 15—7½ inch
Oblong Relish



No. 17—6½ inch
One Hdl. Sweetmeat



No. 19—7 inch
Hexagon Bon Bon



No. 16—7½ inch
Two Comp. Oblong Relish



Study Club News

STUDY GROUP #3 - SOUTH FLORIDA "FLORIDA EVERGLADES"

The Florida Everglades Study Group began its new season of meetings on October 2nd at the home of Mark Nye. Our group has now shrunk to five members with the departure of Bob and Betty Bryner to central Florida.

The topic for the evening, led by the host, was unusual or seldom seen Cambridge stems and was illustrated with examples from his collection.

On the "Show & Tell" table was a crystal egg cup, etched Apple Blossom.

submitted by Mark Nye

STUDY GROUP #7 - EASTERN OHIO "THE CAMBRIDGE BUFFS" Phone: 614/432-5230

The Cambridge Buffs Study Group met at the Stage Coach Antiques Mall and home of Roy and Doris Isaacs, Norwich, Ohio. Thirteen members and one guest were present.

Our program of study was presented by Doris Isaacs and Charles Upton on patterns, flowers and etchings with similar names. Also stemware that is similar, but made by different glass companies.

"Show & Tell" items included: Fenton candlesticks; a Cambridge plate with gold etching by Lotus; crown tuscan cup; Near Cut bowl; depression Pretzel type pattern by Indiana Glass; and an Imperial swan.

The Study Group purchased several pieces of Near Cut for the MUSEUM. Next meeting will be at the home of Lena Barnes.

submitted by Deanne Gray

STUDY GROUP #11 - ILLINOIS "THE CAMBRIDGE NUDES"

The October meeting of the Cambridge Nudes was held at the home of Neil and Ethel Unger with six members present.

Our topic of discussion for the evening was Crown Tuscan. Neil gave a background history of crown tuscan and the markings found on it.

There was a lovely and varied array of this beautiful glass. Some of the more unusual pieces shown were an 8 1/2" swan, a Nautilus vase with hand painted scenes on it, a 9" nude comport with a black foot, a 9" nude cigarette box with black enameling, a #3500 cup and a 3" type 2 black enameled signed swan.

Our "Show & Tell" session was a real delight with such items being shown as a #3011 9" dark emerald nude shell comport, an ivory enameled perfume bottle complete with atomizer, a helio basket, a pair of Martha #497 candlesticks etched in Rosepoint, a #3500 footed candy dish with a smooth knob etched in Rosepoint, a Regency cocktail with Cambridge Pink bowl, and a #658 horn of plenty two light gold encrusted Rosepoint candlestick. The hit of the evening was a nude stem banquet goblet with cutting #611.

Our November meeting will be held at the home of Bob Cole. We all left the Ungers feeling "in the pink!"

submitted by Jane Kersey



NCC CHRISTMAS GIFT IDEAS

Scotty Dog bookends at \$30 each, plus \$3 postage and handling.

Cute little Pencil Dog Cup Plates in crystal, cobalt blue, teal and amethyst at \$7 each plus \$1 postage and handling.

Don't forget all the books available on Cambridge Glass . . . especially the new Color Book. Check on page 2 in this issue for our ad listing all the books we have available.

All Ohio residents, please be sure to add the 6% state sales tax to all your orders.

STAGE COACH ANTIQUE MALL

(formerly White Pillars Antiques)

7525 East Pike
Norwich, OH 43767
614/872-3720

MANY DEALERS. . .

PLENTY OF PARKING. . .

WIDE SELECTION OF GLASS

AND POTTERY

FURNITURE AND

GENERAL LINE!

BUY and SELL

OPEN YEAR ROUND

Weekdays - 10 AM - 5:30 PM

Sunday - 12 noon - 5:30 PM

Summer Evening Hours - by Chance!

Located 9 miles E. of Zanesville, OH, on I-70 to Norwich Exit No. 164 - then 1/2 mile W. on Route 40.

CLASSIQUE GLASS CO.

Box 52572 Tulsa, Oklahoma 74152
(918) 585-3203

#1236 Royal Blue Ivy Ball \$ 57.50
#1917/87 Helio 1/2 lb.
covered Candy 75.00
#3500/15 std. Cream, Minerva
etching 30.00
Doulton Jug, Candlelight etch . . 275.00
8" Plate, lt. emerald,
Blue Willow etch 52.50
#138 amber Sugar, #732 etch . . . 17.50
#993 ebony 12 1/2" Floral Bowl . 35.00
#845 amber Ice Bucket 35.00
#627 ebony 4" Candlesticks, pr. . 45.00

WANT TO BUY:

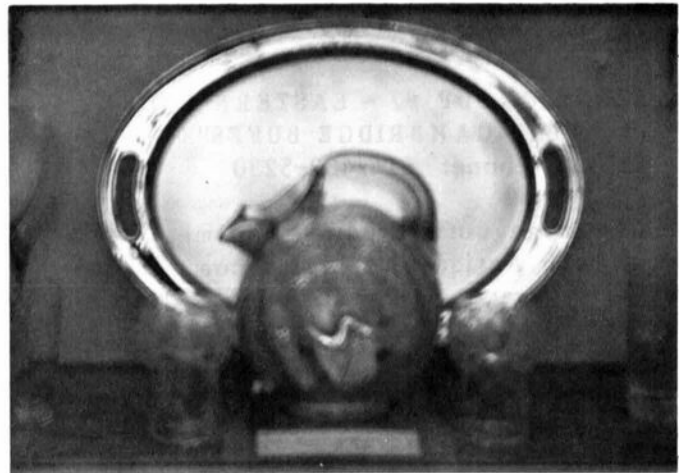
AMBER TURKEY LID — WILL PAY!!

Mint & Each Unless Noted. P & I Extra.

— Classified —

BUYING: CAPRICE Moonlight or Rosepoint by Cambridge; Rose or Orchid by Heisey; and American, June, Fairfax, Versailles, Trojan, etc., by Fostoria. Nadine Pankow, 207 South Oakwood, Willow Springs, IL 60480. 312/839-5231.

WANTED: CAMBRIDGE Stoppers for the following decanters - #1325; #3400/92; #3400/119; #3400/118; #3400/156; #1388; #1387. Also ball stoppers for 4 oz. oils. Any quantity, any condition. Julie Sferrazza, 144 Tanglewood Drive, Somerville, NJ 08876.



The above photo was sent to us by Marilyn Rochford of Maryland, with the following notation.

"Did you know that President Franklin D. Roosevelt used this ball jug and two glasses when he spoke at Gettysburg for the Independence Day celebration of 1934?"

I don't know about the rest of you, but I certainly did not know the above . . . and I am very pleased that you sent the photo and took the time to send us the little note Marilyn. It is always interesting to add this type of information to our Cambridge Trivia!

*"Worry, like a rocking chair, keeps you busy
but gets you nowhere."*

BRADFORD THOMAS

Olde Loved Things

900 RIDGEWOOD AVENUE, HOLLY HILL, FLORIDA 32017
904/252-7960 after 4 PM

ROYAL BLUE:

#1307 triple Candlesticks, pair	\$ 225.00
#3400/71 Nut Cups (4) each	25.00
#3400/91 3-part Relish	60.00
#3500/64 10" 3-part Relish	95.00
#3500/113 15" 4-part Celery	110.00
#3400/647 double Candlesticks, pair	210.00
#993 12 1/2" ftd. crimped Bowl	95.00

HEATHERBLOOM: ETCHED GLORIA

#3035 Goblets (6) and Cocktails (6), set	400.00
--	--------

WILDFLOWER:

#3900/115 Pitcher	175.00
#3400/35 11" 2-handled Plate	48.00
#3900/13 footed Bonbon	30.00
#3900/100 Cruet	85.00
#3900/123 7" Relish	35.00
#1299 11" Vase	95.00

CANDLELIGHT:

#3111 10 oz. Goblets (6) each	28.00
---	-------

DIANE:

#3400/9 Gold encrusted Candy and cover	95.00
--	-------

LUCIA: ROCK CRYSTAL CUTTING

14" Torte Plate	32.00
---------------------------	-------

CAPRICE:

#65 Bowl crystal w/Silver overlay large various leaves	48.00
Moonlight blue 6 1/2" hld. Bowl w/8" indented Plate w/Silver overlay, Grapes, Strawberries, Cherries, etc.	110.00

BASKETS:

#319 Georgian amethyst	65.00
#119 7", amethyst	100.00

CREAM/SUGARS:

#252 Blossom Time, Gold trim, pair	29.00
Cascade, forest green, pair	29.00
Cascade, mandarin gold, pair	29.00

MASTERCARD/VISA

POSTAGE & INSURANCE EXTRA



"MUSEUM ACQUISITIONS"

Several pieces of glass have been added to our MUSEUM over the last few months. Possibly the most unusual are the four stems featured in the photo shown here.

The Caprice goblet is Topaz in color. The tall goblet has tiny Ram's Heads just at the top of the stem. The other two pieces had not been seen before. All four pieces are considered to be experimental and very rare. Be sure to look for them on your next visit to your NCC MUSEUM.

Glen Everett

7309 SKYVIEW PLACE NORTH #F-304, TACOMA, WA 98406
206/565-5869

NUDES

Green 6 oz. Hoch 5" stem (5)	200.00
Crystal Cigarette Box 5" stem	275.00
Green Ashtray	235.00
Amber Cigarette Holder w/ashtray foot	450.00
Amber Ivy Ball	185.00
Carmen Ivy Ball	200.00
Royal Blue Ivy Ball	200.00
Green Ivy Ball	185.00
Amethyst Ivy Ball	185.00
Amethyst Table Goblet	150.00
Carmen Table Goblet	150.00
Green Table Goblet	150.00
Crown Tuscan Seashell Comport	170.00
Royal Blue Cupped Comport	175.00
Crown Tuscan Seashell Comport Decorated	200.00
Green Cupped Comport	165.00
Amber Cupped Comport	165.00
Green Flared Comport	165.00

DOLPHIN CANDLESTICKS:

Amber Mt.Vernon Base (mold mark in base of one), pair	225.00
Light Green, pair	300.00
Peachblo, pair	350.00
Light Emerald Green frosted, pair	250.00

MISCELLANEOUS

Amber Turkey	350.00
Pamona Green Sandwich Tray w/Gold Trim	125.00

FLOWER FROGS

Green Rose Lady	200.00
Green Two-Kid	200.00
Amber Draped Lady 8"	180.00
Pink Rose Lady 8"	210.00
Pink Mandolin Lady	375.00
Mocha Draped Lady 13"	425.00
Amber Draped Lady 13"	300.00
Crystal Rose Lady, old base	200.00
Crystal Two-Kid	185.00
Light Pink Two-Kid	215.00
Pink Draped Lady 8"	135.00
Green Satin Draped Lady 8"	170.00
Crystal Satin Draped Lady 8"	160.00
Pink Satin Two-Kid	175.00
Crystal Satin Bashful Charlotte 11"	225.00
Crystal Bashful Charlotte 11"	175.00

CROWN TUSCAN

#3400/45 11" Bowl & two-light Keyhole Candlesticks w/Gold encrusted Rosepoint (set)	350.00
#3400/45 11" Bowl w/Gold encrusted Chintz completely signed	250.00
#1240 12" Bowl w/Gold encrusted Chintz completely signed (gold a little worn)	175.00
11" footed Urn Keyhole Stem	200.00
8" Seashell Flower Center, footed	150.00
6" Seashell Flower Center, footed	100.00
Seashell Flower Holder	50.00



ALL ITEMS MINT & EACH UNLESS NOTED.

UPS EXTRA.

EXCESS REFUNDED.

DEALERS



DIRECTORY

NOTE: When writing to the Dealers listed here, please enclose a SASE!

<p>EVELYN M. ALLEN 135 Cynthia Street Heath, Ohio 43055 Mail Order & Shows 614-522-1635 SPECIALIZING IN CAMBRIDGE GLASS!</p>	<p>BENICIA ANTIQUE SHOP 305 First Street Benicia, California 94510 OPEN 11 AM - 5 PM Closed Monday Z. E. LOPES 707-745-0978</p>	<p>CHARLES MIKULIK Box 416 Elizabeth, N.J. 07207 — COLLECTOR — Always paying good prices for CAMBRIDGE CAPRICE in all colors 201-688-1144 CARRY MOST TYPES OF ANTIQUES</p>
<p>ANDREJCAK'S ANTIQUES 14533 Bayes Ave. Lakewood, Ohio 44107 Joe & Karen Andrejcek 216-226-3417 SHOWS ONLY — CAMBRIDGE — FENTON — CHINA</p>	<p>VISIT HISTORIC BENICIA and its 28 shops Off Interstate #80 North of San Francisco</p>	
<p>THE ANTIQUERY 42 E. Main St., St. Rt. 40 New Concord, Ohio 43762 Ph. 614-432-4483 Richard Bennett <i>Specializing in Cambridge Glass</i></p>	<p>BERKELEY ANTIQUES 69 Berkeley St. Boston, MA 02116 George or Frank 617-426-1048 CAMBRIDGE, HEISEY, GENERAL LINE</p>	<p>BETTY'S ICE HOUSE ANTIQUES 517 Fulton Street Wausau, Wisconsin 54401 Quality Antiques Cambridge - Heisey - General Line Betty R. Puestow Hours 1-5 Daily 715-848-7145 or by appointment</p>
<p>BLUE BONNET SHOPPE at The Main Place 102 West Mistletoe at Main San Antonio, TX 78212 512/736-4900 Antiques, Crystal, Collectibles! Open 7 days!</p>	<p>D & D ANTIQUES Columbus, Ohio DICK SLIFKO SHOWS ONLY</p>	<p>THE FLOWER FROG 106 E. Cairo Dr., Tempe, AZ 85282 MAIL ORDER and SHOWS Pat Binkley 602/967-1373 CAMBRIDGE HEISEY FOSTORIA</p>
<p>THE GLASS CUPBOARD 39 Shire Oaks Drive Pittsford, New York 14534 Marcia Ellis 716-586-7596 CAMBRIDGE ONLY INQUIRIES INVITED</p>	<p>THE GLASS MENAGERIE Unit 4, Plaza 20, Route 50 North Easton, MD 21601 Barbara & Bill Danels 301/822-8794 SPECIALIZING IN GLASSWARE OF THE DEPRESSION ERA</p>	<p>GLASS RAINBOW of California P.O. Box 127, Elk Grove, CA 95624 Neil & Ervina McCartney Hours 9am-4pm & 7-9pm 916/685-5485 BY APPOINTMENTS & SHOWS!</p>
<p>PEG AND DALE GOTSCHALL 833 N. 6th Street, Cambridge, OH 43725 ANTIQUES and COLLECTIBLES including quality crystal and colored glass Hours by Chance or Appointment 614/432-5529</p>	<p>GREEN ACRES FARM 2678 Hazelton Etna Rd., Pataskala, OH 43062 (State Route 310 North) Sat. & Sun. 1-7 PM 614/927-1882 Antiques, Crystal Glass and Collectibles</p>	<p>HENDERSON'S ANTIQUES 303 Guilford Ave., Woodfield, OH 43793 Mary & Wilbur Phone: 614 472-1133 SPECIALIZING IN CAMBRIDGE GLASS Shows, Mail & Stagecoach Antique Mall</p>
<p>THE HITCHING POST 7467 S. R. 88 Ravenna, OH 44266 Ph. 216-296-3686 D. McDaniel CAMBRIDGE — HEISEY — GENERAL LINE</p>	<p>GEORGE HOFFMAN ANTIQUES 129 South 4th Street Newark, Ohio 43055 614-345-8021</p>	<p>1886 HOUSE East Schodack, N.Y. 12063 MAIL and SHOWS Laurie Cruise 518-477-5895 CAMBRIDGE - NORITAKE - AZALEA - D.G.</p>
<p>joyce's antiques Bought and Sold Specializing in HEISEY • CAMBRIDGE • VERLYS • AMERICAN GLASS P.O. Box 114 Albertson N.Y. 11507 (516) 499-3396</p>	<p>SHIRLEY S. LAHOUSEUR Antiques and Collectibles Specializing in Cambridge Glass BY APPOINTMENT 7597 Daphne Drive 315-458-5297 No. Syracuse, NY 13212</p>	<p>MARGARET LANE ANTIQUES 2 E. Main St., New Concord, OH 43762 Lynn Welker 614/826-4418 CAMBRIDGE GLASS MATCHING SERVICE Hours Mon.-Fri. 1-5 PM or by Appointment</p>
<p>SALT FORK ANTIQUES 10 miles North of Cambridge Exit 54 off I-77, then 1/2 mile East Hours: Tuesday thru Saturday 12 noon - 5 p.m. 614/432-2020 614/439-4039</p>	<p>AL STEELE Westerville, Ohio 614-882-6483 or 614-882-7124 Mail Orders and Shows Only HEISEY — CAMBRIDGE — PATTERN GLASS</p>	<p>YOU CAN ADVERTISE YOUR ANTIQUE SHOP HERE! 1 inch - \$12 for 12 months</p>



A nonprofit organization dedicated to the preservation and study of Cambridge Glass

National Cambridge Collectors, Inc.
P O Box 416 CAMBRIDGE, OHIO 43725

You Are Cordially Invited
To Become A Member Of The

NATIONAL CAMBRIDGE COLLECTORS INC

Benefits derived from membership include: receipt of our club publication, The Cambridge CRYSTAL BALL, informative Quarterly Meetings, Antique Shows, Auctions, and other special events.

The Cambridge CRYSTAL BALL is published the first of each month. This newsletter contains educational and interesting articles, questions and answers, information on reproductions and reissues, notices of all club functions, classified advertisements, dealers' directory, and many other features of interest to collectors of Cambridge Glass.

Yearly dues are \$13.00 for Individual Members and \$3.00 for each Associate Member. All members have voting rights, but only one issue of the CRYSTAL BALL will be mailed per household.

Name (please print) _____ \$13.00

Mailing Address _____

City _____ State _____ Zip _____

Associate Members (Must be at least 12 years of age and living in the same household)

1. Name _____

2. Name _____

3. Name _____

Total number of Associate Members _____ @ \$3.00 each \$ _____

TOTAL AMOUNT ENCLOSED \$ _____

Please make check payable to: NATIONAL CAMBRIDGE COLLECTORS, INC

Recommended by _____

SUPPORT N.C.C. Give a "Gift of Membership!"

MUSEUM

Closed December, January and February



MARK YOUR CALENDAR

Quarterly Meeting

FRIDAY, FEBRUARY 22, 1985 - 8 PM

All Cambridge Auction

SATURDAY, FEBRUARY 23, 1985 - 11 AM

Convention & Antique Show & Sale

JUNE 28, 29, 30, 1985

All the above events will be held at the
Shenandoah Inn, Old Washington, Ohio

National Cambridge Collectors, Inc.
P. O. Box 416 Cambridge, Ohio 43725

FIRST-CLASS MAIL
U.S. POSTAGE
PAID
So Vienna, Ohio
45369
Permit No. 15

FIRST CLASS MAIL



DECEMBER 1984