

# Cambridge



# Crystal Ball

ISSUE NO. 144

APRIL 1985

Published monthly by the NATIONAL CAMBRIDGE COLLECTORS, Inc.  
To encourage and to report the discovery of the elegant and boundless product  
of the Cambridge Glass Company, Cambridge, Ohio

## THOUGHTS FROM YOUR PRESIDENT . . . . .

Ah! Spring is here, I think. We've had about ten days of reasonably warm weather lately, so I am going to take that as a sign that winter is over.

How about that weather for the Auction? I always guarantee good weather for the Auction, but this year I was afraid I was going to be "shot at sunrise." A week before the auction we decided not to open the Museum because there was so much snow piled up in the parking lot that we would have to get a snow plow to clear it. Would you believe that by the time Auction Saturday rolled around, the snow had all melted and it was a warm sunny day. Attendance was very good and we set another record for sales, nearly \$16,000.

The Quarterly meeting on Friday evening prior to the Auction was mostly taken up with discussion concerning our mold purchases.

continued on page 2

### MEMBERSHIP RENEWAL NOTICE

If the date on your  
address label is..

**4 - 85**

This is your **LAST ISSUE** of the **CRYSTAL BALL**.  
Please renew **NOW!**

VISIT YOUR MUSEUM

HOURS

12 noon to 4 p.m.

Wednesday thru Sunday

Closed Monday and Tuesday

Phone: 614/432:4245

## MUSEUM FREE AND CLEAR



Pictured in photo above (left to right): Secretary Janice Hughes, President Willard Kolb, Museum Chairman Bill Harbaugh, Helen and Henry Fijalkowski, Board Member Marybelle Moorehead, and Treasurer Bill Smith.

CAMBRIDGE (March 16th) - Red-letter day for members of National Cambridge Collectors, Inc.. Pay Off Made on Museum Property!

Members of the Board of Directors of NCC, Inc., met with former owners, Henry and Helen Fijalkowski, to make the final payment on the Museum building and surrounding land. A check in the amount of \$44,340.55 was presented to the Fijalkowski's, which "paid in full" the four-year mortgage on the Museum.

HAPPY EASTER!

# CAMBRIDGE CRYSTAL BALL

Official publication of National Cambridge Collectors, Inc., a non-profit corporation with tax exempt status. Published once a month for the benefit of its members.

Membership is available for individual members at \$13 per year and additional members (12 years of age and residing in the household) at \$3 each. All members have voting rights, but only one *Crystal Ball* will be mailed per household.

Back issues of the *Crystal Ball* are available (beginning with Issue No. 1, May 1973) for members only. Cost \$.60 each or 12 issues for \$7.

**1984-85 OFFICERS & COMMITTEE CHAIRPERSONS**

PRESIDENT .....	Willard P. Kolb
VICE-PRESIDENT .....	David B. Rankin
SECRETARY .....	Janice Y. Hughes
TREASURER .....	William C. Smith
SERGEANT-AT-ARMS .....	Marybelle Moorehead
BUDGET & FINANCE .....	David B. Rankin
BY-LAWS .....	David B. Rankin
CONVENTION .....	David B. Rankin
MEMBERSHIP .....	Phyllis D. Smith
MUSEUM .....	Billy Harbaugh
PROGRAM & ENTERTAINMENT ...	Frank Wollenhaupt
PROJECT .....	Willard P. Kolb
PUBLIC RELATIONS .....	William C. Smith
PUBLICITY .....	Joseph Andrejcek
STUDY GROUP ADVISOR .....	Evelyn M. Allen
1985 AUCTION .....	Lynn M. Welker
1985 ANTIQUE SHOW .....	Joy McFadden
1985 FLEA MARKET .....	Larry F. Hughes
CRYSTAL BALL EDITOR .....	Phyllis D. Smith

**CLASSIFIED ADVERTISING RATES**

5c per word \$1.00 minimum  
 We cannot mix type size in classified advertisements. Abbreviations and initials will count as words. Payment in full MUST accompany all ads.

**DISPLAY ADVERTISING RATES**

(camera ready ads preferred)

	Members	Non-Members
1 8 page (9 items) .....	\$4.00	\$6.00
1 4 Page (20 items) .....	7.00	10.00
1 2 page (20 items) .....	12.00	18.00
3 4 page .....	17.00	25.00
Full page (50 items) .....	22.00	33.00

**DEALERS DIRECTORY**

5 line maximum ..... \$12.00 for 12 months  
 Cambridge *Crystal Ball* assumes no responsibility for items advertised and will not be responsible for error in price, description or other information.

*Advertising copy, articles, club news and notices must be in our hands by the 10th of each month to assure publication in our next issue.* Advertisements containing reproductions will not knowingly be accepted unless clearly stated.

Opinions or information stated in any signed article or letter printed in the *Crystal Ball* are those of the authors and may or may not agree with National Cambridge Collectors, Inc. The Editor reserves the right to refuse and to edit any material submitted for publication so as to conform with the editorial style of the *Crystal Ball*.

**PLEASE ADDRESS ALL CORRESPONDENCE TO**

National Cambridge Collectors, Inc.  
 P.O. Box 416 Cambridge, Ohio 43725

**PRESIDENT: Willard Kolb .... 614/695-0695**  
**SECRETARY: Janice Hughes ... 614/432-7823**  
**EDITOR: Phyllis Smith .... 513/323-3888**

NCC MUSEUM of Cambridge Glass is located on U.S. Route 40, 1/8 mile east of I-77 near Cambridge. Hours: 12 noon to 4 PM - Wednesday thru Sunday. (March thru November)

PLEASE NOTIFY US IMMEDIATELY OF ANY CHANGE IN YOUR ADDRESS

Please enclose a SASE when requesting information

THOUGHTS . . . . . continued from page 1

Everyone seemed to be in agreement that we should purchase molds, as we had been doing, to protect as many of your collections as possible. I have received many phone calls from people who weren't able to attend and their thoughts were along the same lines. "We must do the best we can with the monies available." This may seem like a setback to many people, the fact that many of the molds went to other companies, but anything worth having is worth fighting for and this certainly isn't going to be the end for NCC. We will overcome this period of production changes by trying to keep you informed of the reproductions.

Perhaps many of you have not had the opportunity to keep up on the happenings at Imperial. Anna Maroon, of Maroon Enterprises, has purchased the Imperial factory. Anna is a businesswoman with a lot of energy, and she has promised to work with the "Save Imperial" committee to preserve the factory in some manner so it will still be noted for glass making, or at the very least preserve it as a tourist attraction.

Anna has not purchased any of the factory contents, as yet, and molds and other items are still being sold by Consolidated/Colony. We are still buying molds as your pledges and other monies come in, and we will continue to do so as long as we have the opportunity!

THE BIG DAY FOR US, as far as I am concerned, will be Saturday, March 16th. On that day, at 1 p.m., we will meet at the Museum and pay off the mortgage on the Museum and property!

The monies for this purpose had been invested in Treasury notes for several years at a higher rate of interest than that on our mortgage. We had the option to renegotiate periodically with the seller, and since the mortgage rate and our investment rate difference was gaining us from two to three percent a year, we chose not to pay off until now, when the two rates are almost identical. Confusing? What I am saying is that it is no longer to our benefit not to pay the mortgage off.

We now own our Museum, property and much more, and we are going to continue to grow and be the best . . . thanks to all of you!

**WILLARD**

# 1985 ALL-CAMBRIDGE GLASS AUCTION

by JOE ANDREJCAK  
Publicity Chairman

We "North Coast" people saw for the first three weekends in February 1985, "Snow up to our axles." Who would have ever thought that the last weekend in February - the weekend of the National Cambridge Collectors, Inc., All-Cambridge Glass Auction - would dawn clear, balmy and in the low 60's? It did!

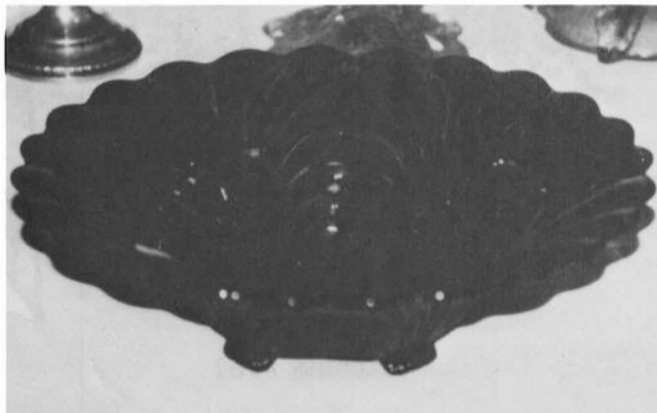
By now it's a common sight to see people standing in line along one wall, to see the Cambridge Glass, when the doors at the Shenandoah Inn open for the 9:30 a.m. Preview.

It is always a thrill to see, for the first time, the artful and well thought out placement of the glass by Auction Chairman Lynn Welker and his not so well paid staff made up of Board members.

Does anyone realize the amount of time that can be spent looking for one crystal stopper which is buried under what seems like a ton of newspapers and is found in the next to last box? Ask Lynn and committee - they can tell you all about it!

The Auction was again handled by Craig Connelly, an Auctioneer who, after all these years, "knows" Cambridge Glass. Now, if he would only wear his glasses so he could read the catalog! Craig gaveled approximately one piece of Cambridge Glass a minute. Over 17 items were sold every 15 minutes.

Over 150 people saw such rare items as an all emerald #1066 Ivy Ball sell for \$120. A #94 rubina 6 1/2" Sweet Pea Vase go for \$225. Another rare item was the carrara Cheese and



AMETHYST CAPRICE BOWL - A BEAUTY

Cracker Set, \$160. A good buy at \$45 was a pressed Rosepoint, forest green, low Wine.

The Cordials sold in the low \$20 - \$40 range this year. The extremely rare #2672 Near Cut 5 oz. bottle Candlestick went for \$200, while the Countess Near Cut Night Lamp dropped at \$75.

Three more extremely rare pieces were the #62 amethyst Caprice 12 1/2" bowl - \$300! The #8 blue opaque experimental color 11" Sea Shell salad Bowl brought \$300, and a very tall, crystal Martini Pitcher with 19th Hole Club House scene in sterling silver overlay went for \$265.

For the Rosepoint lovers, a #3500/42 12" covered Urn sold for over \$600 while the Rosepoint Doulton Jug with the high handle found a new home at \$175. Carmen bowl Nudes sold in the \$170 - \$180 range and an amethyst 7" Nude Comport went at \$100. The Rare, Art Deco etched red enamel #1025 ebony Cigar Humidor sold for \$235. The complete Auction Results Price list can be found on page 13 of this issue.



"ART DECO" #1025 EBONY CIGAR HUMIDOR

At 4 p.m., it was over . . . some in the crowd were glad they had added new pieces to their Cambridge glass collections . . . dealers knew they could sell their purchases for a profit . . . and others were no doubt thinking "why didn't I go that extra \$5 or \$10, that piece could have belonged to me!" There's always next year . . . !

Now, on to the 10th Annual Show & Sale; 12th Annual National Cambridge Collectors, Inc., Convention; and 5th Annual Flea Market. See y'all June 28, 29, 30, 1985 at the Shenandoah Inn in Old Washington, Ohio.

# 1985 CONVENTION PREVIEW

by DAVID B. RANKIN  
Convention Chairman

Believe it or not, spring and summer are just around the corner. With summer comes NCC's 12th annual convention. Now is the time to plan to attend our big event on June 28, 29 and 30 at the Shenandoah Inn near Cambridge.

It is not always possible to plan something new every year, but we think this year's convention and the 10th annual antique show and sale will be the best ever.

For those who will be attending for the first time or have missed out in the past, Barbara Harbaugh will again be arranging tours of local operating glass factories on Friday afternoon. Our Friday night get-acquainted party will feature a mini-auction conducted by Willard Kolb to raise funds for the museum. Everyone enjoys this opportunity to socialize, renew old acquaintances and make new friends.

The Saturday morning breakfast will feature a discussion on decorating glassware presented by Francis Hanse of the Lotus Glass Company. This will be a very timely discussion since the club has recently acquired so many of the Cambridge etching plates. Early examination of some of these plates has renewed questions on how some of the decorations were applied.

A new idea on this year's agenda will be a seminar on Cambridge colors led by Joe Andrejcek. He plans to lead a stimulating discussion on the colors presented in the new color book. The seminar will be on Saturday afternoon.

The big convention event this year, as always, will be the annual banquet on Saturday night. Mark Nye has written many informative articles in the Crystal Ball and promises an equally informative presentation as our banquet speaker.

After breakfast on Sunday morning we must conduct some business at our annual meeting. This will be followed by a show and tell session led by Lynn Welker. Be sure to bring your questionable and interesting glass pieces for display and discussion.

Former Cambridge Glass Company employees will hold their reunion on Sunday afternoon. Details for this meeting are being arranged by Bill Smith.

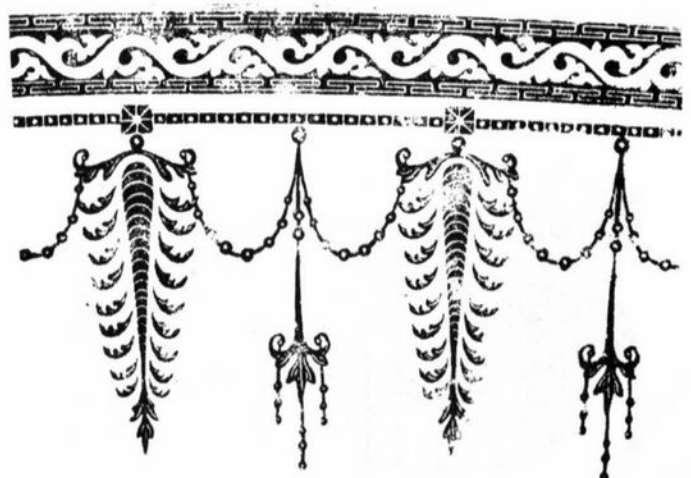
If all this isn't enough, there will be a display room featuring the Amber colors and, of course, the antique show always features many, many items of Cambridge glass.

No convention just happens. We need your help. Marybelle Moorehead is our display room coordinator and would appreciate any interesting items in Amber that you can bring for the display room. Phyllis Hayes is our banquet table decoration coordinator. She plans an elegant setting with Amber console sets and crystal epergnes. Can you bring any of these items to help Phyllis? Please let us know if you can assist. Arrangements for 25 table settings cannot be left until the last minute.

Plan now to attend your convention. Look in next month's Crystal Ball for the registration form. For those planning to stay at the Shenandoah, reservations may be made by phone at (614) 489-5500 or by writing to Box 126, Old Washington, OH 43768. Facilities are also available approximately seven miles from the Shenandoah at the route 209 exit off I-70. These include Best Western, Holiday Inn and others.

---

## ETCHINGS IDENTIFIED



Etching #702

FOUND ON CAMBRIDGE ROUND  
and #9403 TUMBLERS

# CAMBRIDGE DECANTERS

## Part III

by MARK A. NYE

During the years 1949-54 ten different decanters, at varying times, were in the Cambridge line. They were: the Pristine #92, the Pinch #1070, the #1321, #1380, #3400/92, #3400/119, #3797/85 Square line, Mt. Vernon #47 and #52, and the #1379 Colonial.

Of these ten, only three did not remain in the Cambridge line thru the initial closing and into the subsequent re-open period. These three are the Mt. Vernon decanters and the #1379 Colonial decanter. Since decanters available during the re-open period were previously discussed in the first two articles of this current series, only the Mt. Vernon and the #1379 decanters will be covered in this article.

The Mt. Vernon line was introduced in 1931 and a trade journal write-up of the line dating to 1932 was included in Part II of the Cambridge Jug series published in the November 1984 issue of the Cambridge CRYSTAL BALL.

The Mt. Vernon #52 40 oz. decanter with ground stopper was not pictured on the initial catalog pages showing the line issued in 1931, but it did appear on pages published the following year. Until further information becomes available, we can only surmise the M.V. #52 decanter was not included in the original offering of the line.



Mt. Vernon No. 52. 40 oz.

Quoting from the 1932 trade journal write-up, "It (Mount Vernon) is obtainable in all of the Cambridge finest antique colors, including amber, royal blue, forest green and carmine, together with crystal." Mt. Vernon catalog pages dating to 1935 and recently reprinted in the Cambridge CRYSTAL BALL, included the following statement, "These prices are for crystal and represent high retail prices. This line is also made in carmen (ruby) see separate price list." Since no other colors are mentioned, the probability is high that by 1935 Mt. Vernon was no longer being made in amber, royal blue and forest green. Exactly how long carmen Mt. Vernon was in production is not known, but it was definitely out of production by January 1940. The items being illustrated by 1935 did include the 40 oz. decanter. You will find the Mt. Vernon #52 decanter in all of the mentioned colors, but not with any great frequency or regularity.

On a catalog page entitled "Liquor Sets" and issued by Cambridge in 1934, there is shown a 10-piece set that included the M.V. #52 decanter, 6 M.V. #57 old-fashioned cocktail tumblers, the M.V. #62 bitter bottle, and 1 #1 muddler, all on a #3500/72 tray.

From 1940 until at least 1950, the M.V. #52 decanter, in crystal only, continued in the Cambridge line. The September 1950 price list offered the decanter by itself, or as a 7-piece decanter set with 6 M.V. #22 3 oz. ftd.

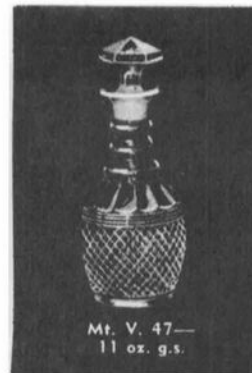
tumblers, and as a 7-piece wine set utilizing the M.V. #27 3 oz. wine.

The 1953 price list, while listing a few Mt. Vernon items, contained no reference to the M.V. #52 decanter. However, this decanter was incorporated into the Cambridge milk glass line as W71 40 oz. decanter and it sold at retail for \$72 a dozen. This may sound inexpensive today, but then \$6 for a decanter was, for many people, a sizable sum of money. In addition to being sold by itself, the W71 decanter was combined with W68 (aka M.V. #22 3 oz. ftd. tumbler) to form a 7-piece set. While a limited number of Mt. Vernon pieces were in the Cambridge line during the re-open period, the #52 decanter was not included.

After the Imperial glass Company purchased the Cambridge molds they used selected ones, including the M.V. #52 decanter which became known as the Imperial #41187 decanter and stopper. Between 1974 and 1979 production was in crystal and crystal with fired on gold. Prior to this, during the years 1960-1974, other colors could have been used to produce this decanter.

The Mount Vernon #47 11 oz. decanter with ground stopper is somewhat of a mystery.

It did not appear on any known catalog pages and price lists until June 1949 when it was shown in the catalog issued at that time. It was still listed in September 1950 as a single item, or along with 6 of the M.V. #57 1 oz. cordials as a 7-piece cordial set. There is no indication the decanter was made in any color other than crystal during that time period.



Mt. V. 47—  
11 oz. g.s.

The #47 decanter had been dropped from the Mt. Vernon line by the fall of 1953. However, like the M.V. #52, this decanter was incorporated into the milk glass line. While captioned on the catalog page illustrating it as W70 11 oz. decanter, the accompanying price list listed this piece as "W70 11 oz. decanter or cologne." There was also a milk glass 7-piece decanter set using this item and 6 W69 1 oz. footed cordials (aka M.V. #57 1 oz. cordial).

As with the Mt. Vernon #52 decanter, the #47 11 oz. decanter did not reappear during the re-open period.

The first published reference to the #1379 26 oz. decanter is a supplemental catalog page dating to 1934.



1379. 26 oz.

However, it is highly likely this decanter dates to the Near Cut years and is from a Near Cut line. Hopefully additional research in coming months will confirm this supposition. The 1934 appearance of the #1379 decanter was on a catalog page entitled "Decanters." No other information regarding this decanter during the 1930s is available at this time.

continued on next page

CAMBRIDGE DECANTERS . . . . . continued from page 5

The 1940 catalog and price list added the word Colonial to the description of the #1379 decanter and from the price list it is learned this decanter was being made in crystal only and sold undecorated as the 1940s dawned.

The June 1949 catalog again had the #1379 decanter available only in crystal but now it was being sold plain as well as cut Manhattan and Norwood. By the fall of 1953, it was no longer being offered decorated but did remain available plain. Like the two Mt. Vernon decanters, the #1379 Colonial 26 oz. decanter did not make the transition into the reopen period.

Returning to a decanter covered in Part I, the #1321 28 oz. decanter was being offered in 1940 with decoration D/1048 or Gold Bands as a single item or with the #7966 2 oz. sherry, similarly decorated, as a 7-piece sherry set.

..... to be continued



# Club News

National Cambridge Collectors, Inc.  
Quarterly Meeting  
February 22, 1985  
Shenandoah Inn, Old Washington, OH

The meeting was called to order at 8:05 p.m. by President Kolb. In attendance were 11 Board members and approximately 100 members and guests from nine states.

The minutes of the previous meeting held on November 10, 1984 were read by Janice Hughes and approved.

The Treasurers report was given by Bill Smith showing the Operating Equity as of December 31, 1984 to be \$20,912.00 and the Museum Equity \$88,341.98.

## COMMITTEE REPORTS

**CRYSTAL BALL:** Editor Phyllis Smith reported the CRYSTAL BALL was at the printers and would be a few days late.

**MEMBERSHIP:** Chairman Phyllis Smith reported we now have 1,204 members. To save postage the membership

cards will be sent with the CRYSTAL BALL.

**PROJECT:** Chairman Willard Kolb reported the cup plate has not been ordered yet.

**PUBLICITY:** Chairman Joe Andrejcek reported all the free publicity has been sent to the major publications for the Auction and the Antique Show.

**MUSEUM:** Chairman Bill Harbaugh reported the Museum will open on March 1.

**ANTIQUE SHOW:** Chairman Joy McFadden reported the contracts have been sent out and several have been returned.

**FLEA MARKET:** Chairman Larry Hughes reported there will be three buildings available. The contracts will be sent out the first week in March.

**PUBLIC RELATIONS:** Bill Smith reported they would be attending several shows during the next few months.

**OLD BUSINESS:** President Kolb reported the updated price guides for all three books will be going to the printer soon.

**NEW BUSINESS:** Chairman Bill Smith reported nominees for the Board of Directors are as follows:

Willard Kolb, St. Clairsville, OH

Joy McFadden, Columbus, OH

D. D. Rummel, Bellville, OH

President Kolb announced the floor open for nominations. There were none. President Kolb closed the nominations.

Charles Upton reported the Cambridge Buffs are selling copies of a Near Cut catalog reprint at a cost of \$9.95. Proceeds to benefit the Museum Fund.

President Kolb announced Consolidated International/Lancaster Colony have donated the original copy of the 1930-34 catalog to the Museum along with other papers.

President Kolb reported NCC started purchasing molds at Imperial on December 20, 1984. He stated there were over 4,400 Cambridge Glass molds at the factory and it was impossible to purchase all of them. The committee is being selective and buying such molds as to protect collectors. Some of these are the #3011 line, Mt. Vernon stems, Martha Washington, Cascade, Ram's Head bowl and candlesticks, some Caprice, all the bookend molds and over 1,000 etching plates. A complete list will be in the CRYSTAL BALL when the purchases are completed. Bill Smith reported approximately \$16,000 has been spent to date. Several pledges made at the 1984 Convention have been received and additional funds are needed.

Door Prizes were won by Norman Mason and Lyle Welker and returned to use for Mini-Auctions.

Convention Chairman Dave Rankin reported Mark Nye will be the Banquet speaker and a representative from Lotus will speak at the Saturday morning breakfast. Further details will be in the April CRYSTAL BALL.

Lynn Welker presented "Show & Tell" and reported on the Auction glass. A motion was made by Frank Wollenhaupt to adjourn at 9:20 p.m.

Janice Y. Hughes, Secretary

# Study Club News

---

## STUDY GROUP #3 - SOUTH FLORIDA "FLORIDA EVERGLADES"

While not always prompt with news of their meetings, the Florida Everglades are alive, not withstanding the recent freeze. Our November meeting was at the home of John and Evelyn Knowles where Mark Nye led the discussion on Cambridge Jugs.

December saw us at the home of Mark Nye and our host presented an overview of Cambridge engravings.

Our January meeting was on the night of the "Big Freeze" and had to be moved from the Ft. Lauderdale home of the Brandts due to a "brown out." We met at the Knowles and Luene Brandt presented a program on ice tubs and ice buckets.

submitted by Mark Nye

---

## STUDY GROUP #5 - SOUTHERN CALIFORNIA "CALIFORNIA CAMBRIDGE COLLECTORS"

The California Cambridge Collectors held their February meeting in the home of Bill and Betty Losch. There were six members and one guest (former member Pat Daly) present. The program for the evening included the NCC slide presentation on Cambridge etchings. Several good etching examples were on display from the Losch collection.

Bill and Betty shared several new acquisitions from their collection. A recently purchased large Mardi Gras vase, an amber Nautilus decanter, a crystal candy dish with rosebud knob, four amethyst #1066 cordials, a pair of crown tuscan dolphin candlesticks, and a royal blue Gadroon candlestick. The cordials were only \$15 for all four, which is really a steal. Ron Rockafellow shared a Rosepoint goblet with an unusual stem. Also an amethyst and farberware decanter set.

Betty served a delicious buffet after the meeting. The next meeting will be our annual auction at Joan and Jim McDowell's.

submitted by Joan McDowell

---

## STUDY GROUP #6 - NEW YORK STATE "THE FINGERLAKES"

The Fingerlakes Study Group held their meeting January 27th, in the home of Don and Shirley Ladouceur, with four members and one guest present.

Our group enjoyed the NCC Color slide program, and we had 32 pieces of glass present during the presentation that enabled us to actually examine and compare many of the colors. The narrative accompanying the slides produced much discussion with some resulting research using the NCC books.

"Show & Tell" contained such items as: crystal #27 Everglade sugar and cream, a Doulton 80 oz. jug w/Elaine

etch, and a #3011 Nude candlestick with bobèche and prisms.

During our meetings each hostess is to display a creative use of Cambridge glass. This day we used a Cambridge epergne with pink (4) candles and a combination of pink carnations, baby's breath and evergreens in the three nappies.

Our next meeting will be held at the home of Bob and Marcia Ellis, Rochester, NY on March 10th.

submitted by Shirley Ladouceur

---

## STUDY GROUP #8 - SOUTHERN MICHIGAN "THE MICHIGAN CAPRICES" Phone: 313/655-4703

The Michigan Caprices met at the home of Ray and Clara Brown on January 25th. The eight members and one guest present continued the study of Cambridge Near Cut.

From the Brown's collection we examined items in the following patterns: Colonial; Buzz Saw; Daisy; Fernland; Guernsey; and Wheat Sheaf. We also admired a tumbler with a rare fish pattern and two horn-shaped candy containers.

Phyllis Hayes brought two pieces from her collection; a bowl with the Buzz Saw pattern and a cracker jar in Ribbon.

### 1985 NCC CONVENTIONEER'S PLEASE NOTE!

There was discussion on the Convention Banquet table centerpieces. Many amber console sets and crystal two-lite epergne sets are still needed. If you are planning to attend the Convention and could loan any of these items to our Committee, won't you please drop us a note so we will be able to plan accordingly. Write to: Phyllis Hayes, 6067 King Arthur Dr., Swartz Creek, MI 48473. Do it today PLEASE!

Lee Coppo brought an article which had appeared in the "Daily Jeffersonian" about the new book on Cambridge colored glass. The article will be placed in our club scrapbook.

Our next meeting will take place on February 22nd at the home of Martin and Lee Coppo. The meeting concluded with a delicious dessert served on delicious blue Caprice.

submitted by Carol Christensen

---

February 22nd . . . the Michigan Caprices met at the home of Lee and Martin Coppo. Visibility was almost nil that evening with an unusually heavy fog, but we still had a good turnout.

Lee presented a program on needle etchings that were produced by the Cambridge Glass Company during the Near Cut era. Our group has had many questions concerning this and it was very interesting to receive

continued on page 8

STUDY CLUB NEWS. . . . . continued from page 7

information on the subject. She also included an interesting article on ways we should check our homes to discourage being burglarized. The article had been written by a former burglar. It gave us all a lot to think about, as we all want to protect our collections.

"Show & Tell" included a milk glass Sea Shell bonbon with Charleton decoration and a beautiful #3400 2 handled bowl with Diane etching. The meeting was concluded with dessert and coffee.

submitted by Phyllis Hayes

**STUDY GROUP #10 - LONG ISLAND, NY  
"THE TUSCAN CROWNS"  
Phone: Charles or Loretta at 516/589-9168**

January's meeting was held at the home of Rick and Jean Serzanin. Tentative plans for our 2nd All-Glass Show & Sale sponsored by the Cambridge Study Group to be held sometime in November were discussed.

We decided to concentrate on Rock Crystal cuttings starting in February. Also reinforcement of the etched patterns will be discussed starting with "A" for Apple Blossom.

A fund raiser in the form of a blind Chinese Auction will also be held in February. (Editor's Note: How about explaining for the benefit of those of us who have never heard of a "blind Chinese Auction" just what it is. Sounds like fun!)

Some items for "Show & Tell" were: crown tuscan 11" vase w/gold Diane etch, crown tuscan small rose bowl w/gold Portia etch, two baskets - pistachio and peachblo, Apple Blossom pinch decanter (lavender tint - could be sun colored), small amber urn, Rosepoint etched compote w/gold trim, egg shaped Rosepoint etched shakers, and Portia etched shakers.

submitted by Rita Berg

February's meeting was held at the home of Joyce and Al Colangelo with nine members present. Everyone loves to go to Joyce's, she serves the greatest desserts!

A lengthy discussion followed regarding the Cambridge molds that the society has been trying to purchase, also much concern.

Three members of the study group, Charlie and Loretta Weeks and Rita Berg were fortunate enough to be able to attend the February Quarterly meeting and Auction. Much information was gathered (not to mention glass). A return trip is planned for next year.

A review of the Rock Crystal cuttings were discussed, but few examples can be found here on Long Island. We had a fund raiser - a Chinese Auction. Some of the prizes were a Viking rabbit and two Cambridge stock certificates which were purchased at the Quarterly meeting in Ohio. Also discussed were plans for our 2nd Annual All-Glass Show & Sale sponsored by the Study Group to be held Thanksgiving weekend.

"Show & Tell" items were: the "famous" Rosepoint covered urn purchased at the Auction, a crystal 7" nude compote, a piece of Cambridge art pottery, a crystal two-kid flower holder, crystal dolphin candlesticks, a carmen table goblet, and ebony candles and candy dish.

submitted by Rita Berg

**STUDY GROUP #11 - ILLINOIS  
"THE CAMBRIDGE NUDES"**

Our final meeting of 1984 was held at the home of Jim and Rose Curnutt . . . after a premeeting dinner at a nearby restaurant.

Our program was a comparison of the various green colors. Using the NCC color book and a variety of items brought for display, we covered the sometimes confusing variations of green. Items on display ranged from the light emerald 13" draped lady and two-kid flower frogs, to the dark emerald #3011 line (Nude) 7" cupped comport. Examples of Jade treatment, pistachio, avocado and forest green were all present. The most heated discussion was over whether certain pieces were forest green or the late emerald.

We concluded with a mini-auction of items donated by members. The proceeds are being sent to the MUSEUM Glass Requisition Fund.

submitted by Rose Curnutt

**NEW REPRINT AVAILABLE  
Ca. 1910 Near Cut Catalog**

GREAT NEWS Cambridge Lovers . . . another new catalog reprint has been made available for YOU!

**1910 NEAR-CUT CATALOG REPRINT**  
113 page reprint of an original Cambridge Glass Company Catalog. Price Guide included.

Members of the Cambridge Buffs Study Group #7 have been busy these past few months readying this old Cambridge Near Cut Catalog for publication. Anyone who has ever worked on this type project knows the tremendous amount of work involved . . . especially in compiling the Price Guide that must go along with such a book.

This new book should shed a lot of information on this heretofore neglected part of Cambridge collecting. We wish to extend our best wishes to this group for a very successful outcome to their project.

All profits from this venture have been dedicated to benefit the NCC Museum.

You may order your copy by sending your check or money order to: Cambridge Buffs, Study Group #7, P.O. Box 248, Cambridge, OH 43725.

1910 Near Cut Catalog Reprints are \$ 9.95 each  
Please add \$ 1.00 each postage & handling  
(Ohio residence add \$ .60 ea. sales tax)



» Preview Showing « » Full Illustrations and Descriptions to follow later «

# SeaShell

Made in Sea Shell Coral, Carmen, Amber,  
Royal Blue, Forest Green and Amethyst as listed

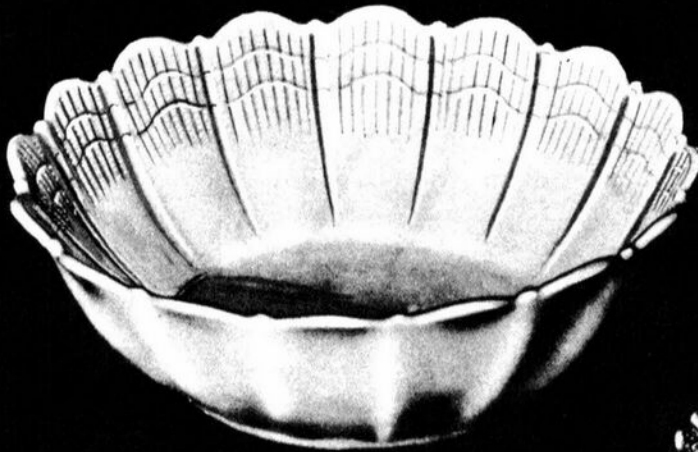
A NEW CREATION



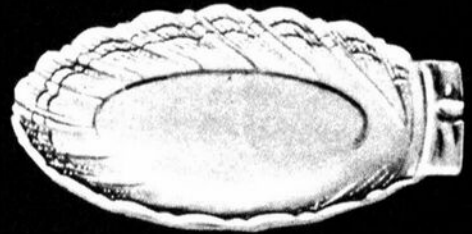
Write for full information



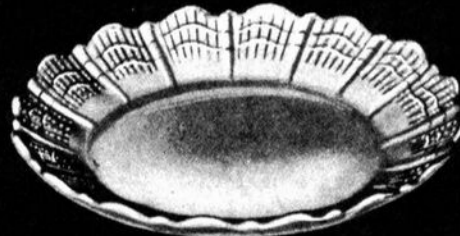
# THE CAMBRIDGE GLASS COMPANY



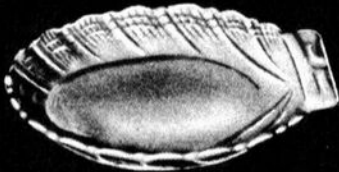
8-11 in. Salad Bowl  
Coral—\$40.00 Doz.



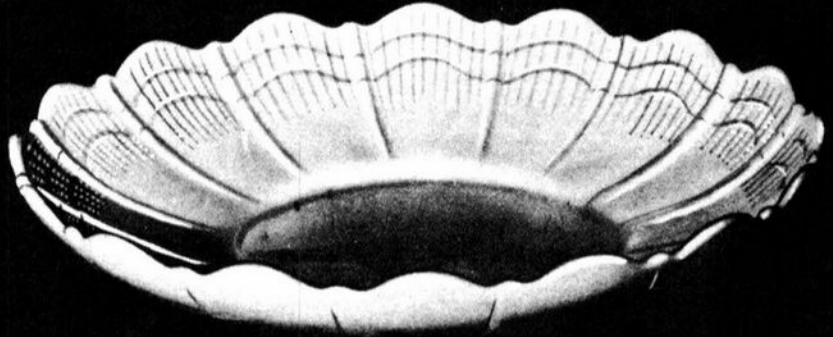
2-7 in. Salad Plate  
Coral—\$8.15 Doz.  
Carmen—\$13.15 Doz.



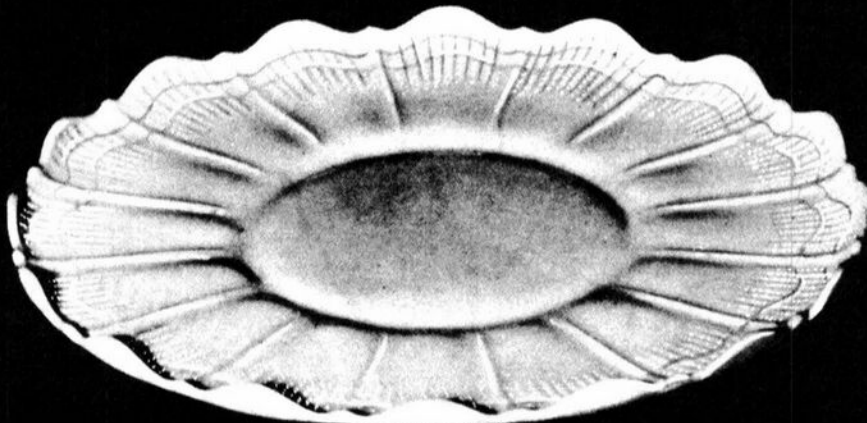
5-7 in. Salad Plate  
Coral—\$7.50 Doz.  
Carmen—\$11.90 Doz.



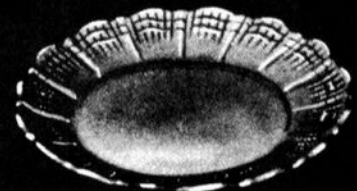
1-5 in. B. & B. Plate  
Coral—\$5.60 Doz.  
Carmen—\$7.25 Doz.



9-13 in. Salad Bowl  
Coral—\$40.00 Doz.



7-14 in. Sandwich Plate  
Coral—\$40.00 Doz.



4-5 in. B. & B. Plate  
Coral—\$5.00 Doz.  
Carmen—\$6.60 Doz.

The prices shown are list prices subject to your usual discounts.



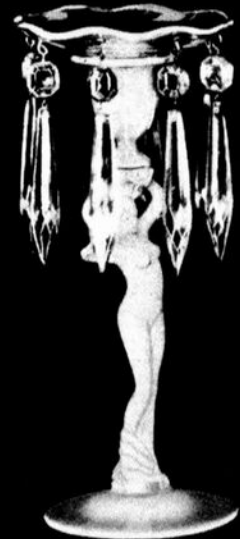
51—8 In. Dolphin Candelabrum  
w/Bobeche & Prisms  
Coral—\$54.00 Doz.  
Carmen—\$61.50 Doz.  
A-Rb-Fg-Ame—\$40.25 Doz.



50—8 In. Dolphin Candlestick  
Coral—\$22.50 Doz.  
Carmen—\$30.00 Doz.  
A-Rb-Fg-Ame—\$18.75 Doz.



60—9 In. Candlestick  
Coral—\$30.00 Doz.  
Carmen—\$33.00 Doz.  
A-Rb-Fg-Ame—\$24.75 Doz.



61—9 In. Candelabrum  
w/Bobeche & Prisms  
Coral—\$61.50 Doz.  
Carmen—\$64.50 Doz.  
A-Rb-Fg-Ame—\$56.25 Doz.



12—8 In. Footed Comport  
Coral—\$30.00 Doz.



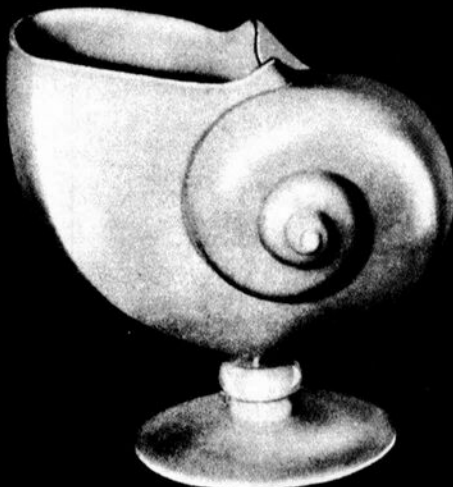
2899—3 In. Flower Block  
Coral—\$5.60 Doz.



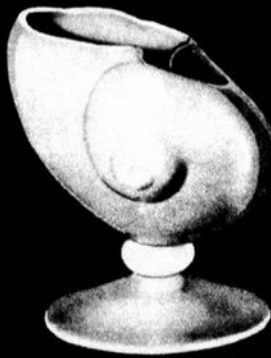
40—10½ In. Flower  
or Fruit Center  
Coral—\$60.00 Doz.  
Carmen—\$82.50 Doz.  
A-Rb-Fg-Ame—\$45.00 Doz.



70 Turtle Flower Block  
Coral—\$7.50 Doz.



42—8 In. Flower Center  
Coral—\$45.00 Doz.  
Carmen—\$67.50 Doz.  
A-Rb-Fg-Ame—\$37.50 Doz.



44—6 In. Flower Center  
Coral—\$22.50 Doz.  
Carmen—\$30.00 Doz.  
A-Rb-Fg-Ame—\$18.75 Doz.



14—9 In. Footed Comport  
Coral—\$30.00 Doz.



# THE CAMBRIDGE GLASS COMPANY

Prefixes On Items

A - Amber  
RB - Royal Blue  
FG - Forest Green  
Ame - Amethyst

64-9 in. Epergne  
w/Bobeche & Prisms  
Coral \$91.50 Doz.  
Carmen \$94.50 Doz.  
A-Rb-Fg-Ame-\$86.25 Doz.

65-9 in. Epergne  
w/Bobeche & Prisms  
Coral \$91.50 Doz.  
Carmen \$94.50 Doz.  
A-Rb-Fg-Ame-\$86.25 Doz.

63-9 in. Epergne  
Coral \$60.00 Doz.  
Carmen \$63.00 Doz.  
A-Rb-Fg-Ame-\$54.75 Doz.

52-8 in. Dolphin Epergne  
Coral \$52.50 Doz.  
Carmen \$60.00 Doz.  
A-Rb-Fg-Ame-\$48.75 Doz.

53-8 in. Dolphin Epergne  
Coral \$52.50 Doz.  
Carmen \$60.00 Doz.  
A-Rb-Fg-Ame-\$48.75 Doz.

62-9 in. Epergne  
Coral \$60.00 Doz.  
Carmen \$63.00 Doz.  
A-Rb-Fg-Ame-\$54.75 Doz.

54-8 in. Dolphin Epergne  
w/Bobeche & Prisms  
Coral \$84.00 Doz.  
Carmen \$91.50 Doz.  
A-Rb-Fg-Ame-\$70.00 Doz.

55-8 in. Dolphin Epergne  
w/Bobeche & Prisms  
Coral \$84.00 Doz.  
Carmen \$91.50 Doz.  
A-Rb-Fg-Ame-\$70.00 Doz.

The prices shown are list prices subject to your usual discounts.

# 1985 AUCTION RESULTS

1.	\$ 47.50	61.	\$160.00	121.	\$ 22.50	181.	\$ 35.00	241.	\$ 7.50	
2.	15.00	62.	40.00	122.	22.50	182.	25.00	242.	20.00	
3.	90.00	63.	40.00	123.	60.00	183.	7.50	243.	40.00	
4.	15.00	64.	125.00	124.	37.50	184.	40.00	244.	45.00	* Indicates
5.	15.00	65.	265.00	125.	30.00	185.	65.00	245.	110.00	the following
6.	70.00	66.	20.00	126.	35.00	186.	120.00	246.	17.50	changes.
7.	20.00	67.	35.00	127.	200.00	187.	65.00	247.	45.00	
8.	12.50	68.	55.00	128.	75.00	188.	30.00	248.	25.00	
9.	10.00	69.	60.00	129.	17.50	189.	15.00	249.	35.00	16. 2 instead
10.	22.50	70.	25.00	130.	145.00	190.	10.00	250.	17.50	of 1
11.	55.00	71.	22.50	131.	35.00	191.	4.00	251.	15.00	
12.	48.00	72.	10.00	132.	117.50	192.	245.00	252.	30.00	25. 2 pair
13.	17.50	73.	10.00	133.	55.00	193.	265.00	253.	55.00	instead of
14.	55.00	74.	5.00	134.	125.00	194.	300.00	254.	45.00	1 pair
15.	70.00	75.	27.50	135.	25.00	195.	80.00	255.	22.50	
16.	55.00*	76.	80.00	136.	45.00	196.	100.00	256.	20.00	58. 1 chipped
17.	45.00	77.	100.00	137.	20.00	197.	475.00*	257.	20.00	
18.	40.00	78.	62.50	138.	22.50	198.	260.00*	258.	45.00	98. Amber not
19.	30.00	79.	35.00	139.	30.00	199.	70.00	259.	17.50	Mocha
20.	40.00	80.	87.50	140.	15.00	200.	70.00	260.	15.00	
21.	30.00	81.	20.00	141.	35.00	201.	155.00	261.	12.50	197. 3 instead
22.	22.50	82.	150.00	142.	30.00	202.	20.00	262.	100.00	of 1
23.	30.00	83.	85.00	143.	25.00	203.	17.50	263.	18.00	
24.	40.00	84.	200.00	144.	20.00	204.	25.00	264.	25.00	198. 2 instead
25.	70.00*	85.	17.50	145.	55.00	205.	55.00	265.	20.00	of 1
26.	22.50	86.	30.00	146.	150.00	206.	95.00	266.	22.50	
27.	20.00	87.	15.00	147.	85.00	207.	50.00	267.	30.00	268. Not
28.	10.00	88.	45.00	148.	190.00	208.	30.00	268.	Not Sold*	Cambridge
29.	27.50	89.	50.00	149.	40.00	209.	30.00	269.	10.00	
30.	30.00	90.	25.00	150.	27.50	210.	40.00	270.	20.00	151A Moonlight
31.	40.00	91.	137.50	151.	75.00	211.	50.00	271.	15.00	8½" Draped
32.	45.00	92.	45.00	152.	20.00	212.	20.00	272.	30.00	Lady
33.	35.00	93.	235.00	153.	20.00	213.	15.00	273.	25.00	
34.	45.00	94.	60.00	154.	40.00	214.	55.00	274.	50.00	
35.	60.00	95.	30.00	155.	18.00	215.	35.00	275.	30.00	
36.	57.50	96.	25.00	156.	25.00	216.	22.50	276.	40.00	
37.	50.00	97.	50.00	157.	50.00	217.	35.00	277.	13.00	
38.	55.00	98.	30.00*	158.	12.00	218.	15.00	278.	35.00	
39.	60.00	99.	60.00	159.	60.00	219.	35.00	279.	45.00	
40.	40.00	100.	52.50	160.	12.00	220.	30.00	280.	35.00	
41.	75.00	101.	112.50	161.	17.50	221.	17.50	281.	20.00	
42.	120.00	102.	45.00	162.	15.00	222.	17.00	282.	45.00	
43.	40.00	103.	35.00	163.	20.00	223.	35.00	283.	50.00	
44.	30.00	104.	12.50	164.	25.00	224.	35.00	284.	20.00	
45.	42.50	105.	22.50	165.	30.00	225.	30.00	285.	20.00	
46.	15.00	106.	110.00	166.	25.00	226.	30.00	286.	8.00	
47.	30.00	107.	145.00	167.	4.00	227.	22.50	287.	30.00	
48.	25.00	108.	145.00	168.	7.50	228.	30.00	288.	20.00	
49.	35.00	109.	90.00	169.	7.00	229.	625.00	289.	18.00	
50.	12.50	110.	75.00	170.	15.00	230.	45.00	290.	20.00	
51.	35.00	111.	55.00	171.	6.00	231.	40.00	291.	42.00	
52.	25.00	112.	85.00	172.	15.00	232.	175.00	292.	37.50	
53.	225.00	113.	70.00	173.	15.00	233.	195.00	293.	15.00	
54.	12.50	114.	5.00	174.	30.00	234.	80.00	294.	32.50	
55.	10.00	115.	77.50	175.	6.00	235.	80.00	295.	7.50	
56.	35.00	116.	20.00	176.	7.50	236.	40.00	296.	12.50	
57.	25.00	117.	40.00	177.	12.50	237.	70.00	297.	60.00	
58.	62.50*	118.	40.00	178.	65.00	238.	22.50	151A.	225.00*	
59.	30.00	119.	37.50	179.	300.00	239.	205.00			
60.	50.00	120.	30.00	180.	35.00	240.	7.50			

## STAGE COACH ANTIQUE MALL

(formerly White Pillars Antiques)

Doris & Roy Isaacs

7525 East Pike  
Norwich, OH 43767

614/872-3720

MANY DEALERS. . .

PLENTY OF PARKING. . .

WIDE SELECTION OF GLASS

AND POTTERY

FURNITURE AND

GENERAL LINE!

**BUY and SELL**

**OPEN YEAR ROUND**

**Weekdays - 10 AM - 5:30 PM**

**Sunday - 12 noon - 5:30 PM**

**Summer Evening Hours - by Chance!**

Located 9 miles E. of Zanesville, OH, on I-70 to Nor-  
wich Exit No. 164 - then ¼ mile W. on Route 40.

MOSTLY  HEISEY

RHODA CURLEY

16 Clayton Place, Albany, NY 12209

HEISEY and CAMBRIDGE

OUR SHOP: "Worth a Trip From Anywhere!"

By Appointment

518/482-6272

## WANTED TO BUY

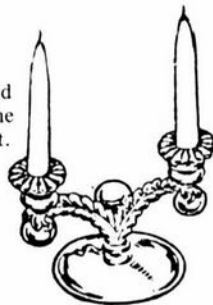
**Martha 495 - 5½" 2-Light Candlestick  
with Pressed Foot**

This Candlestick was made with both a pressed  
and an applied foot. The desired type with the  
pressed foot will show two mold marks on foot.

**Charles A. Upton**

Ph. 614/439-1983

68764 Eighth Street Road  
Cambridge, Ohio 43725



## — Classified —

**BUYING:** Caprice blue or Rosepoint by Cambridge, Rose or Orchid by Heisey, American, June, Fairfax, Versailles, Trojan, etc. by Fostoria and Depression Glass in crystal or colored. **Nadine Pankow**, 207 S. Oakwood, Willow Springs, IL 60480. 312/839-5231

**FOR SALE:** Twelve page pictorial booklet, "The Cambridge Arms" \$5.00. **Country Scottie**, P.O. Box 1512, Dept. 44, Columbus, IN 47202.

**BUYING:** #3121 stemware and #3400 dinnerware with Wildflower etching—plain or gold decorated. Especially interested in ebony items with Wildflower etching with gold overlay. All pieces must be mint. SASE required. **Mike Tippens**, 712 Roy Beatty Lane, Waco, TX 76705. 817/799-8983

**FOR SALE:** Gold Krystal: 3 pc. Mayo set, ice bucket w/tongs, and 3 1/2" swan. All pieces marked. Amethyst: Wine set, 32 oz. decanter w/4 glasses (in book). Pink: 8" round plates (4) and 7" many sided plates (4). All marked. Green: Cups and saucers (4 sets) and bowls (4). All marked. Crystal Caprice: Cream & sugar (set), tumblers (4), sherbets (4), low candleholders (pair), ftd. hld. compote, and 14" ftd. round dish, curved edge. Carmen Georgian Tumblers: large (8), medium (4), juice (3). Caprice: send SASE for price list. **Mary's Country Place**, Route #1, Kingsley, IA 51028.

### Easter Specials

Little girls looking Easter bonnie

—Louella Dunann

Easter lilies, white-robed missionaries of  
the field

—Sunshine Magazine

Children getting all eggcited

—Betty Dunagin

An Easter rabbit munching garden  
salad—delighted that no one believes in  
him anymore

—Harold F. Reeves



**COLUMBUS ANTIQUE  
FLEA MARKET  
(ANTIQUES & COLLECTIBLES)**

Ohio State Fairgrounds - Lausche Building  
Off I-71 Exit 17th Avenue - Columbus, Ohio

**APRIL 21st**

Sunday Only - 7 A.M. to 4 P.M.  
Show Admission \$1.00 - Under 12 Free  
150 QUALITY DEALERS

SELLING Advertising Art Deco, books, Cambridge, clocks, coins, collec-  
tibles, Depression glass, dolls, Fiesta, fine early furniture, Heisey, jewelry,  
lamps, oak furniture, post cards, pottery, good primitives, tools and print  
shop items

**STOCKWELL PROMOTIONS**

4214 North High Street  
Columbus, Ohio 43214  
(614) 267-8163/263-6830/885-2352

**NEXT SHOWS:** May 12, June 23, September 8,  
October 13, November 10, and December 1

NATIONAL CAMBRIDGE COLLECTORS

**FLEA MARKET**

**SATURDAY, JUNE 29th**

**6 A.M. to 5 P.M.**

DEALERS MUST REMAIN SET UP UNTIL 2 P.M.

**GUERNSEY COUNTY FAIRGROUNDS**

OLD WASHINGTON, OHIO  
*(one mile East of I-70, Exit #186, on Old U.S. 40)*

**DEALER SPACE AVAILABLE**

For information or Contract write: Larry Hughes, Chrm., P.O. Box 416, Cambridge, OH 43725

FIESTA

FENTON

PADEN CITY

ART GLASS

MORGANTOWN  
IMPERIAL  
HALL  
GLASS  
DEPRESSION  
TIFFIN  
CAMBRIDGE  
FOSTORIA  
HEISEY

TIFFANY  
CARNIVAL  
DRESDEN  
MIESSEN  
WEDGEWOOD  
CRYSTAL  
BAUER  
ROSEVILLE

THE FANTASTIC  
**SAN FRANCISCO**  
**DEPRESSION ERA**  
**GLASS**  
**CHINA & POTTERY**  
**SHOW & SALE**

(EAST COAST DEALERS EXHIBITING)

**SAT APRIL 13th, 1985 10am-5pm.**

**SUN APRIL 14th, 1985 10am-5pm.**

AT

**THE HALL OF FLOWERS**

9TH AVE. & LINCOLN WAY  
INSIDE GOLDEN GATE PARK

**Admission \$2.50**

**(\$2.00 WITH THIS TICKET)**

**FOR YOU & YOUR PARTY**

For Information Contact  
"UP TO PARR"

588 Guerrero Street  
San Francisco, CA 94110  
(415) 552-9337 - (415) 285-7799

REFERENCE BOOKS AND A WHOLE LOT MORE  
GOOD FOOD



# MOSTLY HEISEY

RHODA CURLEY 518/482-6272  
16 Clayton Place, Albany, NY 12209  
UPS EXTRA

## PORTIA ETCHING

#3121 Goblet, 10 oz. (12) each.....	\$ 21.00
#3121 Cocktails, 6 oz. (20) each.....	22.00
#3121 Wines, 3 1/2 oz. (14) each.....	27.00
#3121 Sherbets, 6 oz. (5) each.....	19.00
#3900/41 Sugar.....	15.00

## CAPRICE PRESSED

#11 Tumblers, 9 oz. (5) each.....	15.00
#11 Tumblers, 5 oz. (6) each.....	13.00
#6 Wines, 3 oz. (3) each.....	18.00
#42 Cream and Sugar with Tray (2) each.....	27.00
#43 Cream and Sugar.....	22.00
#154 Bon Bon, 2 handled.....	13.00
#213 Ash Tray (2) each.....	5.00
#38 Sugar, Pink.....	15.00

## CAPRICE MOONLIGHT BLUE

#183 Jug, 80 oz.....	175.00
#28 Plate, 13".....	50.00
#61 Crimped Bowl, 12 1/2".....	50.00
#213 Ash Tray, 2 1/2".....	15.00
#235 Rose Bowl, 6 1/2".....	90.00
#235 Rose Bowl, 7 1/2".....	125.00

## CROWN TUSCAN

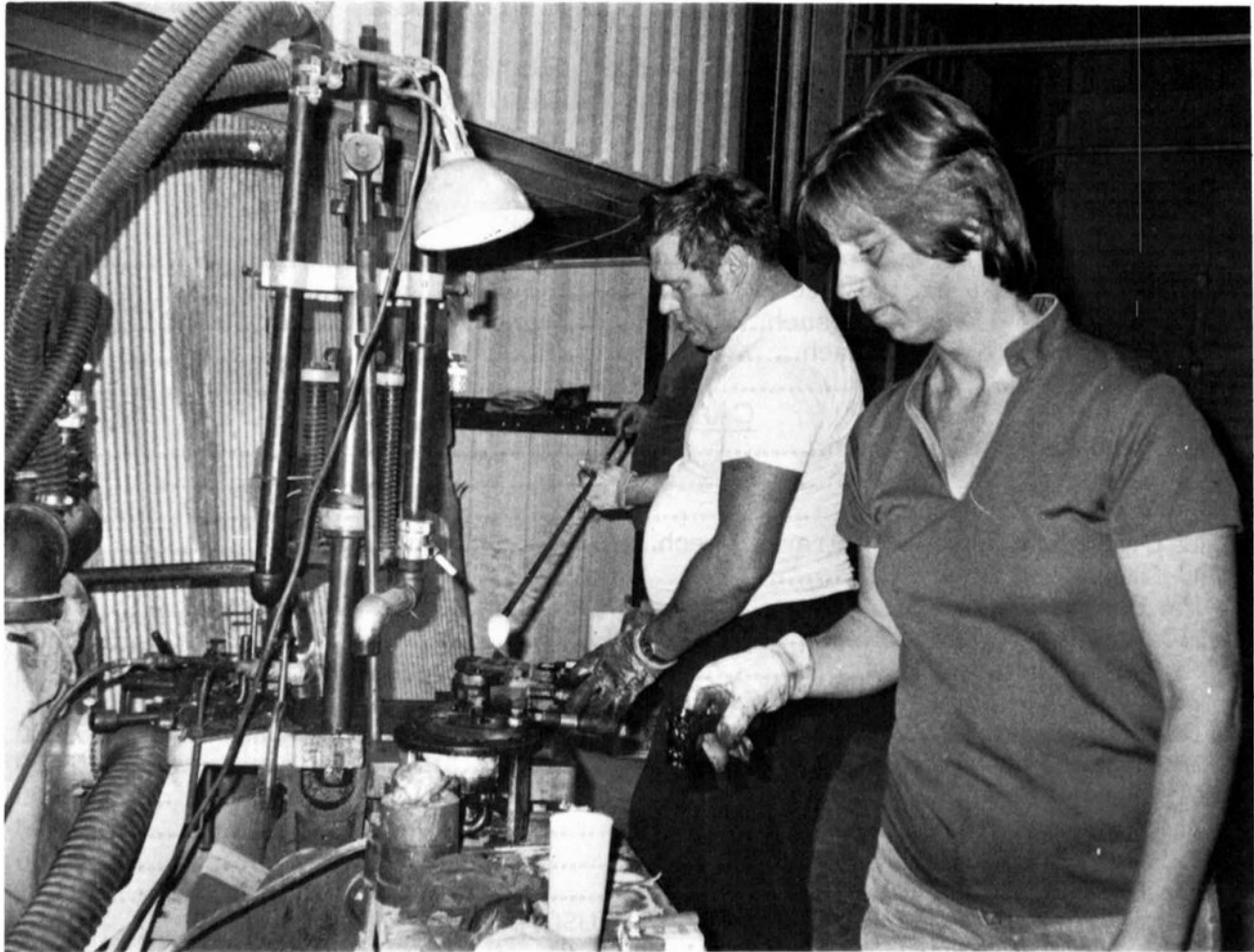
SS Bowl, footed, Shell 9", 3 toed.....	48.00
SS Nude Candlesticks, 9", pair.....	240.00
SS Nude Compote 8", Shell 7 1/2", nice gold decoration.....	195.00
#3500/56 Candy dish and cover (2) each.....	67.00
#30 Relish 9", 4 toed, 3 compartment, lovely gold decoration.....	39.00
#33 Ash Tray 4", 3 footed (7) each.....	18.00
#1040 Swan 3" (2) each.....	35.00

## MISCELLANEOUS

#1138 Sea Gull Flower Holder 8 1/2" (4) each.....	40.00
#1136 Heron Flower Holder 12".....	140.00
#1238 Keyhole Vase 14", Amber.....	60.00
#3011 Nude Candlesticks 9", Farberware only, pair.....	48.00
#3500/26 Ram's Head Fruit Basket, Amber.....	175.00
#110 Seafood Cocktails, frosted (2) each.....	30.00
#58 Ice Tub 8" Martha Washington 7".....	35.00
#3400/38 Jug 80 oz., Adonis Rock Crystal engraving.....	195.00
#3011 Nude Cocktail, Amethyst.....	80.00
#3011 Nude Cordial, Light Emerald (Apple) Green, 1 oz.....	125.00
Royal Blue 6" Plates and Finger Bowls (9 sets) each set.....	35.00
Dinner Plates 9" Decagon, Gold color (8) each.....	20.00

If you are planning to attend shows at BRIMFIELD or DUANESBURG this Spring and Summer why not stop and see our many pieces of HEISEY and CAMBRIDGE.  
Our shop is "WORTH A TRIP FROM ANYWHERE." By Change or Appointment!

**VISIT OUR FACTORY - SEE GLASSWARE BEING MADE .....**



**HAND PRESSED BY EXPERIENCED CRAFTSMAN**

Stop in on your way to and from the Heisey and Cambridge Conventions.  
Continuous Factory tours MONDAY - FRIDAY 8 AM to 4 PM.

Now working over 450 molds from Tiffin, Westmoreland, Cambridge, Imperial, St. Clair and Summit Art Glass. If you are a Cambridge collector you may want to see the Mannequin Head mold we have obtained. This is the biggest piece of glass ever blown at the Cambridge Glass factory.

We have a sales area in the factory where all items we manufacture are on display.

**Summit  
art glass co.**

4171 SANDY LAKE ROAD  
RAVENNA, OH 44266  
216/296-2850

# DEALERS



# DIRECTORY

NOTE: When writing to the Dealers listed here, please enclose a SASE!

<p><b>EVELYN M. ALLEN</b> 135 Cynthia Street Heath, Ohio 43055 Mail Order &amp; Shows 614-522-1635 <b>SPECIALIZING IN CAMBRIDGE GLASS!</b></p>	<p><b>BENICIA ANTIQUE SHOP</b> 305 First Street Benicia, California 94510  <b>OPEN 11 AM - 5 PM</b> Closed Monday Z. E. LOPES 707-745-0978</p>	<p><b>CHARLES MIKULIK</b> Box 416 Elizabeth, N.J. 07207  <b>— COLLECTOR —</b> Always paying good prices for <b>CAMBRIDGE CAPRICE</b> in all colors 201-688-1144  <b>CARRY MOST TYPES OF ANTIQUES</b></p>
<p><b>ANDREJCAK'S ANTIQUES</b> 14533 Bayes Ave. Lakewood, Ohio 44107 Joe &amp; Karen Andrejcek 216-226-3417 <b>SHOWS ONLY — CAMBRIDGE — FENTON — CHINA</b></p>	<p><b>VISIT HISTORIC BENICIA</b> and its 28 shops Off Interstate #80 ..... ..... North of San Francisco</p>	
<p><b>ABRAHANTE'S Matching Service</b> Discontinued China, Crystal &amp; Flatware Patterns 7288 S.W. 40th Street Miami, FL 33155 <b>PHONE: 305 / 262-7336 BUY &amp; SELL</b></p>	<p><b>RICHARD BENNETT</b> 64183 Warne Drive, Cambridge, OH 43725 Phone: 614 / 432-4483 <b>SPECIALIZING IN CAMBRIDGE GLASS</b></p>	<p><b>BERKELEY ANTIQUES</b> 69 Berkeley St. Boston, MA 02116 George or Frank 617-426-1048 <b>CAMBRIDGE, HEISEY, GENERAL LINE</b></p>
<p><b>BLUE BONNET SHOPPE</b> at The Main Place 102 West Mistletoe at Main San Antonio, TX 78212.....512/736-4900 <b>Antiques, Crystal, Collectibles! Open 7 days!</b></p>	<p><b>D &amp; D ANTIQUES</b> Columbus, Ohio  <b>DICK SLIFKO SHOWS ONLY</b></p>	<p><b>THE FLOWER FROG</b> 106 E. Cairo Dr., Tempe, AZ 85282 <b>MAIL ORDER and SHOWS</b> Pat Binkley 602/967-1373 <b>CAMBRIDGE HEISEY FOSTORIA</b></p>
<p><b>THE GLASS CUPBOARD</b> 39 Shire Oaks Drive Pittsford, New York 14534 Marcia Ellis 716-586-7596 <b>CAMBRIDGE ONLY INQUIRIES INVITED</b></p>	<p><b>THE GLASS MENAGERIE</b> Unit 4, Plaza 20, Route 50 North Easton, MD 21601 Barbara &amp; Bill Danels 301/822-8794 <b>SPECIALIZING IN GLASSWARE OF THE DEPRESSION ERA</b></p>	<p><b>"Happiness Is" - The Stultzs</b> 3106 Warren Ct., Glen Allen, VA 32060 Shows and Mail (Richmond Area) 804/262-1273 <b>GLASS CIRCA 1890-1960</b></p>
<p><b>PEG AND DALE GOTSCHALL</b> 833 N. 6th Street, Cambridge, OH 43725 <b>ANTIQUES and COLLECTIBLES</b> including quality crystal and colored glass Hours by Chance or Appointment 614/432-5529</p>	<p><b>GREEN ACRES FARM</b> 2678 Hazelton Etna Rd., Pataskala, OH 43062 (State Route 310 North) Sat. &amp; Sun. 1-7 PM 614/927-1882 <b>Antiques, Crystal Glass and Collectibles</b></p>	<p><b>HENDERSON'S ANTIQUES</b> 303 Guilford Ave., Woodsfield, OH 43793 Mary &amp; Wilbur 614/472-1133 <b>SPECIALIZING IN CAMBRIDGE GLASS</b> Shows, Mail &amp; Stagecoach Antique Mall</p>
<p><b>THE HITCHING POST</b> 7467 S. R. 88 Ravenna, OH 44266 Ph. 216-296-3686 D. McDaniel <b>CAMBRIDGE — HEISEY — GENERAL LINE</b></p>	<p><b>GEORGE HOFFMAN ANTIQUES</b> 129 South 4th Street Newark, Ohio 43055 614-345-8021</p>	<p><b>1886 HOUSE</b> East Schodack, N.Y. 12063 <b>MAIL and SHOWS</b> Laurie Cruise 518-477-5895 <b>CAMBRIDGE - NORITAKE - AZALEA - D.G.</b></p>
<p><b>L &amp; M ANTIQUES</b> 1331 S.E. 4th Ave., Pompano Beach, FL 33060 Lydia &amp; Cliff McNeil 305/943-2274 <b>CAMBRIDGE &amp; FOSTORIA OUR SPECIALTY</b> Buy &amp; Sell Shows Only</p>	<p><b>SHIRLEY S. LADOUCEUR</b> Antiques and Collectibles Specializing in Cambridge Glass <b>BY APPOINTMENT</b> 7597 Daphne Drive 315-458-5297 No. Syracuse, NY 13212</p>	<p><b>MARGARET LANE ANTIQUES</b> 2 E. Main St., New Concord, OH 43762 Lynn Welker 614/826-4418 <b>CAMBRIDGE GLASS MATCHING SERVICE</b> Hours Mon.-Fri. 1-5 PM or by Appointment</p>
<p><b>THE COUNTRY PEDDLER ANTIQUES</b> 111 W. Main St., New Concord, OH 43762 JACK &amp; SHARON BOGART PHONE 614/826-7439 <b>BUY SELL APPRAISE REFINISH</b> General Line-Cambridge Glass</p>	<p><b>AL STEELE</b> Westerville, Ohio 614-882-6483 or 614-882-7124 Mail Orders and Shows Only <b>HEISEY — CAMBRIDGE — PATTERN GLASS</b></p>	<p><b>SKYLINE DRIVE ANTIQUES</b> 5432 Skyline Drive, Cambridge, OH 43725 Drew &amp; Donna Davis 614 / 432-2621 <b>SPECIALIZING IN CAMBRIDGE GLASS!</b> Shows Mail Order Matching Service</p>

# MOLD ACQUISITIONS (a partial listing)

## BOOK ENDS

- 511 "Tombstone" (2)
- 1119 Eagle (2)
- 1124 Pouter Pigeon (2)
- 1128 Scotty Dog (2)
- 1129 Lion (2)

## CAPRICE

- 1 Goblet (Heavy Pressed)
- 13 Coaster
- 17 Cup and Saucer
- 22 8 1/2" Plate, Salad
- 70 Candlestick
- 73 Reflector Candlestick  
(This mold incomplete)
- 98 3 oz. Oil (Ball Shape)
- 117 3 oz. Oil
- 165 Candy Box and Cover
- 178 90 oz. Doulton Jug
- 179 32 oz. Jug (Ball Shape)
- 201 Ice Bucket
- 202 Cracker Jar and Cover
- 204 Cigarette Holder
- 205 Cigarette Holder
- 206 3" Ash Tray
- 207 Cigarette Box and Cover
- 474 Punch Bowl

## STEMS ONLY for Blown Caprice Stemware!

- 3130 (4)
  - 3790 (2)
- ### CASCADE
- Goblet
  - 17 Cup and Saucer
  - 616 Cigarette Box and Cover

### CUT WILD ROSE

- 3200 5 oz. Cup

### GADROON

- 6 6" Nappy (Ram's Head)
- 25 9" Bowl (Ram's Head)
- 31 6 1/2" Candlestick  
(Ram's Head)
- 41 10" Urn and Cover
- 119 13" Punch Bowl  
(Ram's Head)
- 124 Coaster/3 1/4" Ash Tray
- 125 3 1/2" Ash Tray
- 126 4" Ash Tray

### HEIRLOOM

- 40 Cream and Sugar
- 41 Cream and Sugar
- 44 Cream and Sugar
- 45 Cream and Sugar

## MARJORIE

- 2631 15" Punch Bowl
- 2631 5 oz. Cup

## MOUNT VERNON

- 27 Wine
- 53 Whiskey
- 63 Coaster
- 87 Cordial

## 3011 STATUESQUE

- Stem for 7" Comport
- Stem for Cocktail
- Stem for Table Goblet
- 29 4" Mint
- Paste Molds for 3 or 4  
blown tops.

## SWAN

- 1221 Punch Bowl
- 1221 Base
- 1221 5 oz. Cup

## 3400 LINE

- 70 Nut Dish

## MISCELLANEOUS

- 1 Twist Muddler
- 2 Rooster Muddler
- 578 Miniature Cornucopia
- 702 Miniature Cornucopia
- P733 3" Ash Tray
- P737 Canoe Ash Tray
- 1401 Wine (Jefferson)
- 3 STEMS ONLY for the  
REGENCY Stemware.

10th Annual

## NATIONAL CAMBRIDGE COLLECTORS

# ANTIQUÉ SHOW & SALE

(& 12th Annual NCC Convention)

## SHENANDOAH INN

INTERSTATE 70 · EXIT 186 · 7 MILES EAST OF  
CAMBRIDGE, OHIO

**JUNE 28, 29, 30, 1985**

HOURS	
FRIDAY, JUNE 28th (PREVIEW ADMISSION \$3.50)	6:00 - 9:00
SATURDAY, JUNE 29th	11:00 - 6:00
SUNDAY, JUNE 30th (ADMISSION \$1.75)	12:00 - 5:00

OFFERING CAMBRIDGE AND OTHER FINE GLASSWARE  
ALONG WITH A GENERAL LINE OF ANTIQUES

FOOD      DOOR PRIZES      PARKING

National Cambridge Collectors, Inc.  
P. O. Box 416      Cambridge, Ohio 43125

**FIRST CLASS MAIL**

FIRST-CLASS MAIL  
U.S. POSTAGE  
**PAID**  
So. Vienna, Ohio  
45369  
Permit No. 15

APRIL

1985