

Cambridge Crystal Ball



ISSUE NO. 152

DECEMBER 1985

Published monthly by the NATIONAL CAMBRIDGE COLLECTORS, Inc.
To encourage and to report the discovery of the elegant and boundless product
of the Cambridge Glass Company, Cambridge, Ohio

MERRY CAMBRIDGE CHRISTMAS



*Wishing you
happiness not only
at Christmas but
every day of the
New Year*



From your
Officers, Board of Directors
and
CRYSTAL BALL Staff

MEMBERSHIP RENEWAL NOTICE

If the date on your
address label is..

12 - 85

This is your LAST ISSUE of the CRYSTAL BALL.
Please renew NOW!

CAMBRIDGE CRYSTAL BALL

Official publication of National Cambridge Collectors, Inc., a non-profit corporation with tax exempt status. Published once a month for the benefit of its members.

Membership is available for individual members at \$13 per year and additional members (12 years of age and residing in the household) at \$3 each. All members have voting rights, but only one *Crystal Ball* will be mailed per household.

Back issues of the *Crystal Ball* are available (beginning with Issue No. 1, May 1973) for members only. Cost \$.60 each or 12 issues for \$7.

1984-85 OFFICERS & COMMITTEE CHAIRPERSONS

PRESIDENT	Willard P. Kolb
VICE-PRESIDENT	David B. Rankin
SECRETARY	Janice Y. Hughes
TREASURER	William C. Smith
SERGEANT-AT-ARMS	Marybelle Moorhead
BUDGET & FINANCE	David B. Rankin
BY-LAWS	David B. Rankin
CONVENTION	David B. Rankin
MEMBERSHIP	Phyllis D. Smith
MUSEUM	Billy Harbaugh
PROGRAM & ENTERTAINMENT ...	Frank Wollenhaupt
PROJECT	Willard P. Kolb
PUBLIC RELATIONS	William C. Smith
PUBLICITY	Joseph Andrejcek
STUDY GROUP ADVISOR	Evelyn M. Allen
1985 AUCTION	Lynn M. Welker
1985 ANTIQUE SHOW	Joy McFadden
1985 FLEA MARKET	Larry F. Hughes
CRYSTAL BALL EDITOR	Phyllis D. Smith

CLASSIFIED ADVERTISING RATES

5¢ per word \$1.00 minimum
 We cannot mix type size in classified advertisements. Abbreviations and initials will count as words. Payment in full MUST accompany all ads.

DISPLAY ADVERTISING RATES

(camera ready ads preferred)

	Members	Non-Members
1/8 page (9 items)	\$4.00	\$6.00
1/4 Page (20 items)	7.00	10.00
1/2 page (20 items)	12.00	18.00
3/4 page	17.00	25.00
Full page (50 items)	22.00	33.00

DEALERS DIRECTORY

5 line maximum \$12.00 for 12 months
 Cambridge *Crystal Ball* assumes no responsibility for items advertised and will not be responsible for error in price, description or other information.

Advertising copy, articles, club news and notices must be in our hands by the 10th of each month to assure publication in our next issue. Paid advertisements containing reproductions or new glass will not knowingly be accepted for publication.

Opinions or information stated in any signed article or letter printed in the *Crystal Ball* are those of the authors and may or may not agree with National Cambridge Collectors, Inc. The Editor reserves the right to refuse and to edit any material submitted for publication so as to conform with the editorial style of the *Crystal Ball*.

PLEASE ADDRESS ALL CORRESPONDENCE TO

National Cambridge Collectors, Inc.
 P.O. Box 416 Cambridge, Ohio 43725

PRESIDENT: Willard Kolb 614/695-0695
SECRETARY: Janice Hughes ... 614/432-7823
EDITOR: Phyllis Smith 513/323-3888

NCC MUSEUM of Cambridge Glass is located on U.S. Route 40, 1/8 mile east of I-77 near Cambridge. Hours: 12 noon to 4 PM - Wednesday thru Sunday. (March thru October)

PLEASE NOTIFY US IMMEDIATELY OF ANY CHANGE IN YOUR ADDRESS

Please enclose a SASE when requesting information

CAMBRIDGE GLASS BOOKS FOR SALE

by National Cambridge Collectors, Inc.

* **COLORS IN CAMBRIDGE GLASS**
 (128 pages - 60 color plates - fully indexed)
 Hardbound with Price Guide \$19.95

* **1930-34 CAMBRIDGE GLASS CO. CATALOG REPRINT**
 (250 page reprint of original catalog)
 Hardbound with Price Guide \$14.95

* **1949-53 CAMBRIDGE GLASS CO. CATALOG REPRINT**
 (300 page reprint of original catalog)
 Hardbound with Price Guide \$14.95

* **1956-58 CAMBRIDGE GLASS CO. CATALOG REPRINT**
 (164 page reprint of original catalog)
 Paperback \$6.95

1985 COMBINED PRICE GUIDE
 for 1930-34 & 1949-53 catalog reprints Postpaid \$5.75

*NCC MEMBERS ONLY: *These publications are available at 10% discount - or all four (4) at one time for \$50.00.*

by Mark Nye

CAMBRIDGE STEMWARE
 (95 Stemware lines with 107 illustrations)
 Paperback \$14.95

by Cambridge Buffs Study Group

NEARCUT
 (108 page reprint of 1910 Cambridge Catalog)
 Paperback with Price Guide \$9.95

by Mary, Lyle and Lynn Welker

CAMBRIDGE GLASS CO.
 (120 pages of reprint from 8 old catalogs)
 Paperback \$6.95

CAMBRIDGE GLASS CO. BOOK II
 (119 pages of reprint from old catalogs)
 Paperback \$6.95

CAMBRIDGE, OHIO GLASS IN COLOR II
 Spiralbound \$5.95

by Harold and Judy Bennett

1903 CAMBRIDGE GLASS CO. CATALOG REPRINT
 (106 page reprint of an original catalog)
 Paperback \$7.50

Address your orders to:

BOOKS
 National Cambridge Collectors, Inc.
 P.O. Box 416
 Cambridge, OH 43725



Please add \$1.00 (P & I) per order.
 (Not required for Price Guide)
 Ohio residents please add 6% state sales tax.

DEALER DISCOUNTS AVAILABLE - PLEASE WRITE!

THOUGHTS from your President . . .



There are only about twenty-three shopping days left until Christmas. Still plenty of time to order from the club shopping list on page 13 of this issue of your Cambridge CRYSTAL BALL. These items make fine gifts and you will also be helping NCC with your purchases! Why go fight the crowds in the stores . . . when you can do your shopping by mail?

We had a great time at the November Quarterly. It was not all that well attended for a November meeting, but for those of us who were there, it was a most enjoyable evening. For those of you who did not attend, I can only tell you that you missed a wonderful meal and a great program. Frank Wollenhaupt presented a slide program of the Display Rooms and Shows from almost all, if not all, of our Conventions. It was quite interesting, and the oh's and ah's' were quite noticeable along with a lot of comments like, "I once owned that," and "can you believe I sold it for such and such a price?"

The Director's meeting prior to the Quarterly meeting was taken up mostly with normal proceedings. The three main topics of discussion were handled as follows. First of all, we discussed finishing the addition to the main Museum. Work will begin on the showcases shortly and we plan to have everything completed by June. The second matter had to do with purchasing a computer system for the Museum, if we are unable to acquire one by donation possibly from NCR. David Rankin will be handling this acquisition, either way. Hopefully it will be in place by the end of the year. When plans are completed, David has agreed to write an article for the CRYSTAL BALL, explaining its usage.

The third, and perhaps most important item we discussed, was the gift to the Museum from Floetta Hancock Griffith. As you know from reading your October issue of the CRYSTAL BALL, Edwin Earl Griffith, owner of LaFlo Glass Company of Cambridge, Ohio, passed away on September 11th. The LaFlo Glass Company cutting shop, along with numerous other items that came from the Cambridge Glass factory, will be dismantled and taken to our Museum. We will meet with James Moss, son-in-law of Mrs. Griffith, on Friday, November 8th, and begin moving these items. As you may remember, Mr. Griffith donated the first Cambridge Glass molds to our Museum. There were seventeen stem molds, I believe, that LaFlo had owned. We appreciate this greatly, and we certainly appreciate Mrs. Griffith's desire to keep other memorabilia from the factory in Cambridge and especially at our Museum so it can be enjoyed by everyone. When the move is completed I will let you know what items were in the acquisition. "Thank you" Mrs. Griffith for your splendid donation. I'm certain that it is, and will be for year to come, greatly appreciate by everyone!

Are my ears deceiving me . . . or did I hear people wonder aloud where they are going to get enough tax deductions for 1985? If you need a deduction in any amount, we can accommodate you very easily. We still need money to pay off the loan on the new building! As we indicated earlier, this is still part of the mold acquisition. We had to have a place to store the molds. We are moving along very rapidly now and we would hope that our finances are not going to interfere with our progress. We will get the work done if you will help pay for the materials. You should all be very proud of what you have accomplished so far, but we still need financial support. Get your donations to us by the end of December and I will spend New Year's Eve writing you a "Thank You" letter. If you already have enough deductions for 1985, look ahead to 1986.

MERRY CHRISTMAS and A HAPPY AND PROSPEROUS NEW YEAR TO ALL OF YOU!

During this festive season, let us all remember the true meaning of Christmas.

CASCADE

by MARK NYE

A post World War II pattern, Cascade or #4000 Line, was actually designed during the war years as the design patent applications were filed January 26, 1945 and granted in the spring of the same year. Probably as the result of wartime shortages in material and labor, and for other reasons as yet unknown, Cascade was not actually produced for sale until late 1947 or early 1948. Among the first trade advertisements for the pattern was the following taken from the December 1947 issue of "Crockery and Glass Journal."

"Cascade . . . a fascinating new glassware design by Cambridge to be presented in early January at Cambridge showrooms. The magic enchantment of the clear, tumbling waters of a mountain waterfall are to be seen in Cambridge's distinctive new glassware design . . . 'Cascade.' This brilliant, beautiful line of fine American crystal - offered at prices surprisingly moderate for such superb quality and styling - may be seen in January at the Cambridge showrooms in Chicago, New York, Denver, Dallas, Los Angeles and Cambridge, Ohio. A cordial invitation is extended to buyers."

From "Crockery and Glass" as well as other trade journals come the following trade advertisements that originally appeared during 1984.

"Cambridge Glass Co. introduced two new lines of pressed glassware recently. One line, called 'Cascade' includes a complete line of fancy tableware and stemware, including hi-ball and fruit juice tumblers. Stemware retails for about 69 cents each."

"Cascade, a brilliant new glassware, with design featuring a step-down effect in true cascade fashion."

"Here is crystal of magnificent beauty inspired by the gay enchantment of clear, tumbling waters a splash with wondrous brilliance. The step-down effect of the pattern in true cascade fashion is an innovation in fine glassware design."

"Like a stream of pure light tumbling rhythmically into sun-splashed pools, Cascade brings you one of the most fascinating brilliant new crystal designs to be seen in years. It is a handmade modern crystal in a variety of pieces . . . substantial, ornamental use. Priced moderately at good stores."

January 1949 saw this description of Cascade appearing in "Crockery and Glass Journal."

"Cascade by Cambridge - The rhythmic pattern of falling sunlit waters captured in even more brilliant crystal! Cascade by Cambridge . . . wholly modern, therefore practical and durable as well as beautiful in any setting. Display this popular, nationally advertised design now for volume selling."

It was also during 1949 that Cambridge advertisements in "Ladies Home Journal" were promoting the Cascade line in this manner:

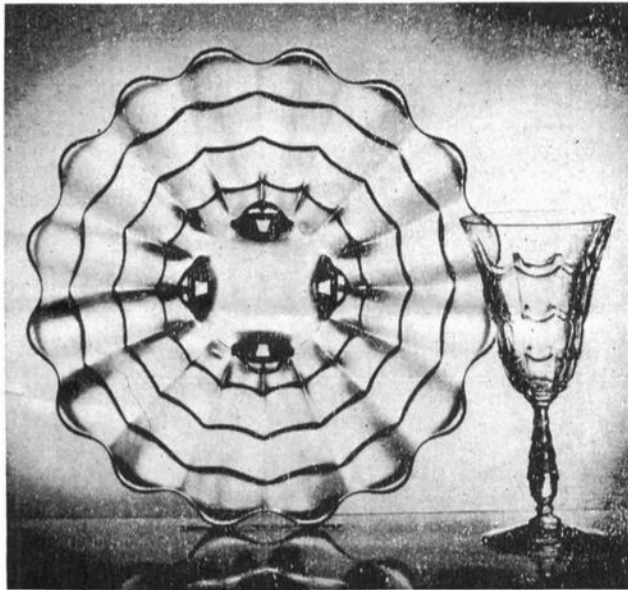
"Cascade by Cambridge . . . Sturdy, modern, magnificent. Glory in the splendor of this dazzling, rich table crystal, bountiful with brilliance and created for every day use! For Cascade is definitely modern and robust in design --- fashioned in shapes you'll find as practical as they are beautiful."

"Cascade by Cambridge . . . Pamper this fascinating new crystal for its beauty but use it every day! For Cascade is sturdy, modern . . . meant to be an 'all occasion' design, meant to be practical, and is! How your friends will compliment you on its flawless clarity, its rich brilliance! A superb gift for the bride."

Thus we have the descriptive text Cambridge used to attract buyers for the Cascade line. It is as enticing today as it must have been almost forty years ago.

The Cascade line is, to today's collectors and for all practical purposes, a pressed line. Originally, it was to have included at least a blown goblet and perhaps a full line of blown stemware. A blown goblet was shown in a trade advertisement (see photo next page) published in February 1948 and at least one example is known. However, no catalog or price list reference has been found for blown Cascade stemware.

The first available listing of the Cascade line is the June 1949 catalog and price list in which 44 items are listed and shown. At that time, there was no listing for Cascade items in color, production being done only in crystal. The Cascade line was not a complete dinnerware line, at least as it was promoted in 1949 and later, as there is no dinner plate. The Cascade place setting consists of a bread and butter plate, 8 1/2" salad plate, cup and saucer, fruit saucer, four tumblers (two are flat and two are footed), goblet, sherbet, and cocktail. Serving and accessory items, ash trays, cigarette box, three vases and a punch set complete the line. (The punch set was discussed as a part of the series dealing with punch bowls -- see August 1984 issue of the Cambridge CRYSTAL BALL.)



CASCADE, brilliant new glassware, with design featuring a step-down effect in true cascade fashion. The Cambridge Glass Company, Cambridge, Ohio.

from "China & Glass"
February 1948

About the time mandarin gold and emerald (late, dark green) were introduced in the summer of 1949, supplemental pages to the June 1949 Cambridge catalog were issued. Here we find the first mention of colored Cascade. Shown as being available in these two colors were the #129 3-piece mayonnaise set with crystal ladle, the #165 candy box and cover, the Cascade #573 9 1/2" vase, the #41 sugar and cream, and the 3-piece sugar and cream set - Cascade #39. Do note very carefully that there is no Cascade patterned tray for the sugar and cream. The tray used

in both crystal and color is the #37 tray from the Corinth line and when found in color belongs to the Cascade line.

The same array of pieces offered in June 1949 remained available in September 1950. The colored Cascade items, except for the 3-piece mayonnaise set, were also a part of the Cambridge line as the 1950s began. For some reason, yet unknown, the mayonnaise set in color had been discontinued in the previous months.

Between June 1949 and September 1950, a price increase went into effect. In September 1950 Cascade stemware was listed at 80 cents each, versus the 70 cents each retail price in 1949. In addition, the Cascade salt and pepper shakers, as well as most shakers, were now being offered with either plastic or chrome tops with chrome commanding a higher price.

By October 1953, only 12 items remained in the Cascade line: the stemware and tumblers; salad plate; the 8" ash tray which, by the way, is also used as the base to the punch bowl; the punch bowl; the 21" underplate to the punch bowl; and the punch cup. None of these items were listed as being available in color.

Among the molds used to produce the milk glass line were at least two from the Cascade line. The #165 candy box and cover which was designated W89 and the Cascade #573 vase, made in milk glass as W133. Both items were illustrated on the supplemental catalog pages. However, the price list issued for the milk glass line stated that several items illustrated were not actually in production. Included in this group was the W89 or milk glass Cascade candy and cover.

Just before the reopening of the Cambridge factory in the early spring of 1955, a physical inventory of the plant was taken. At that time, the Cascade inventory consisted of 1 punch bowl, 3 underplates, 24 dozen punch cups, and 114 dozen additional pieces, consisting primarily of cocktails, 12 oz. ftd. tumblers, and 5 oz. flat tumblers. Also on hand were 2 dozen of the W133 vases, these listed as being discontinued ware.

The 12 items available in October 1953 were made available during the first years of the

continued on next page

CASCADE. continued from page 5

reopen period but the line was totally dropped sometime between late 1956 and the issuance of the final Cambridge price list, dated 1958.

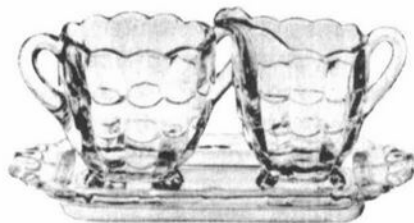
In addition to the colors already mentioned, a few pieces of cascade have been found in crown tuscan and two unusual goblets are known, one in Tahoe blue and one in carmen. These latter two items must be considered very unusual and could very well be one of a kind items, highly experimental in nature. While not in the same rarity class as the two colored goblets, crown tuscan Cascade will be found in very few Cambridge collections.

The Cascade stemware was molded in one piece, that is the stem and bowl were not produced separately and then joined. This brings us to an unusual feature of the Cascade line, the existence of two styles of stemware, one with the "cascades" on the stem going in the same direction as those on the bowl, namely downward, and a second version with the stem "cascades" pointed upward, toward the bowl, while those on the bowl still go downward. The patent application and the 1949 catalog show the stemware with all the "cascades" going downward. The whys and when of the variant remain unanswered questions.

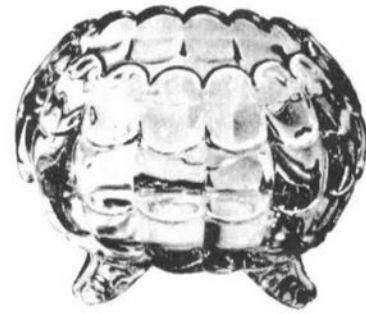
Cascade, while not abundant, is available in today's market place. It makes a good pattern to collect for frequent use since it is durable pattern, one not easily broken, and remains relatively inexpensive.

Have a
merry old Christmas!

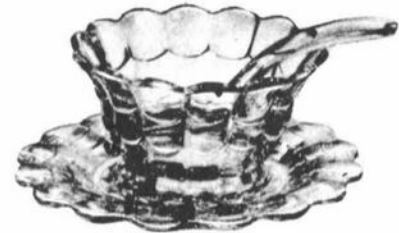
Moss



39
Cascade
3 pc. Sugar and Cream Set



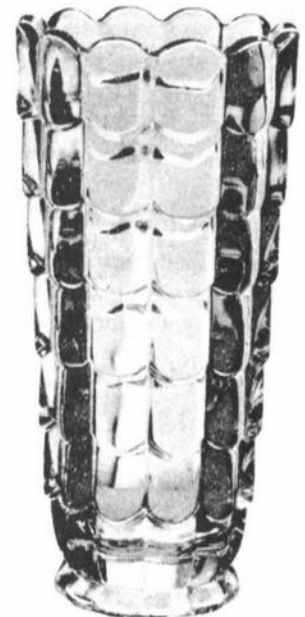
235
Cascade
5 in. Rose Bowl



Cascade 129
3 pc. Mayonnaise Set
(Crystal Ladle)



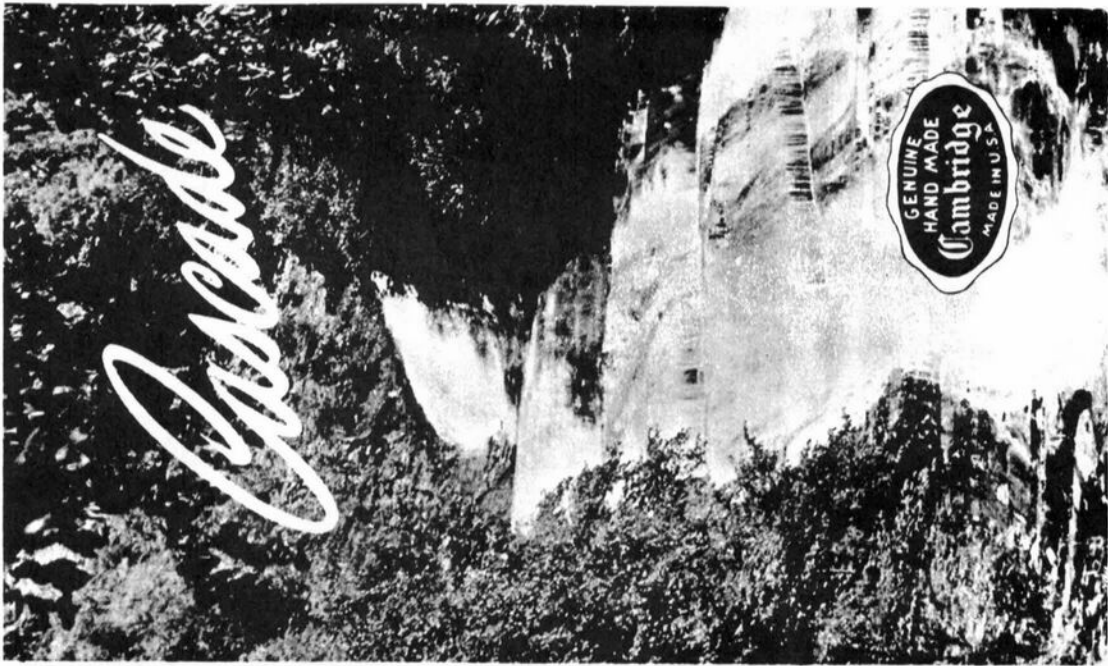
4000/67
5 in. Candlestick



Cascade 573
9 1/2 in. Vase

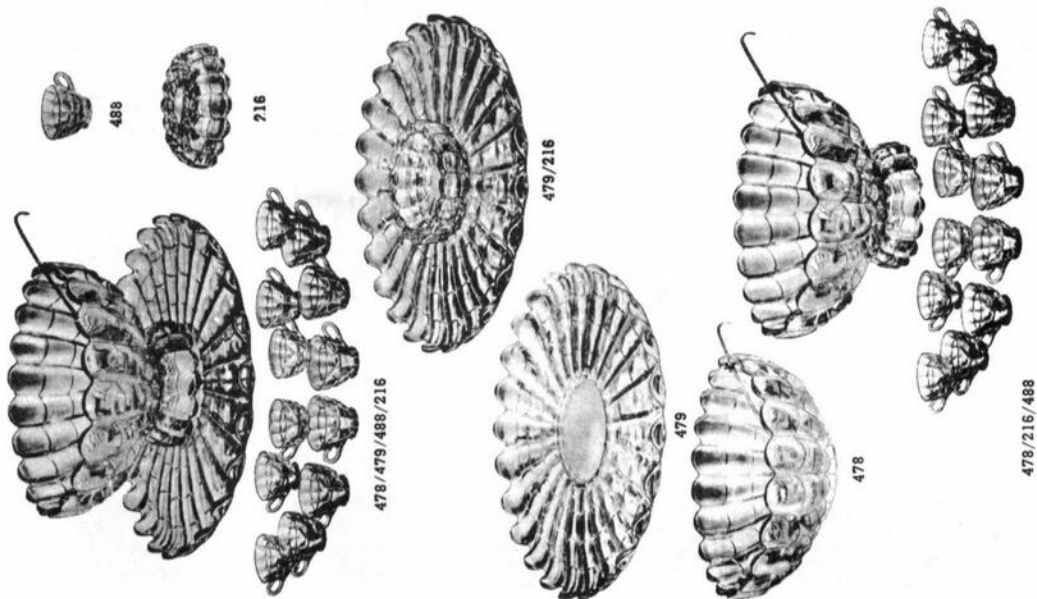


Cascade 96



LIST OF CASCADE ITEMS

- | | |
|-----------------|--------------------------------------------------|
| 1 | Goblet |
| 2 | Sherbet |
| 3 | Cocktail |
| 9 | 12 oz. Fid. Tumbler |
| 11 | 5 oz. Fid. Tumbler |
| 14 | 12 oz. Tumbler |
| 15 | 5 oz. Tumbler |
| 16 | 4 1/2 in. Fruit Saucer |
| 17 | Cup & Saucer |
| 21 | 6 1/2 in. Bread & Butter Plate |
| 22 | 8 1/2 in. Salad Plate |
| 26 | 11 1/2 in. 4 Fid. Plate |
| 33 | 14 in. 4 Fid. Torte Plate, r.e. |
| 41 | Sugar & Cream |
| 54 | 10 in. 4 Fid. Bowl, flared |
| 62 | 12 1/2 in. 4 Fid. Bowl, flared |
| 64 | 10 in. 3 part Celery & Relish |
| 65 | 12 in. 4 Fid. Oval Bowl |
| 67 | 5 in. Candlestick |
| 72 | 6 in. 2 lite Candlestick |
| 81 | 10 1/2 in. 4 Fid. Bowl, shallow |
| 82 | 13 in. 4 Fid. Bowl, shallow |
| 89 | 6 1/2 in. Relish or Pickle |
| 90 | 6 1/2 in. 2 part Relish |
| 96 | Salt & Pepper Shaker |
| 129 | 3 pc. Mayonnaise Set |
| 130 | 7 in. 2 Handled Fid. Bonbon Plate |
| 131 | 8 in. 2 Handled Fid. Bonbon Plate |
| 136 | 5 1/2 in. Compot |
| 164 | 6 in. Bonbon |
| 165 | 6 in. Mayonnaise & Ladle |
| 214 | Candy Box & Cover |
| 215 | 4 1/2 in. Ash Tray |
| 216 | 8 in. Ash Tray |
| 214/215/216 | 3 pc. Ash Tray Set |
| 573 | 9 1/2 in. Vase |
| 574 | 9 1/2 in. Vase, Oval |
| 616 | Cigarette Box & Cover |
| 671 | Ice Tub |
| 478 | Chrome Ice Tong (short) |
| 479 | 15 in. Punch Bowl (10 qts.) |
| 488 | 21 in. Plate |
| | 5 oz. Punch Cup |
| 478/216/488 | Chrome Punch Ladle |
| 478/479/488 | 15 pc. Punch Set with Chrome Ladle |
| 478/479/488/216 | 15 pc. Punch Set, with Chrome Ladle |
| 479/216 | 16 pc. Punch Set, with Chrome Ladle |
| | 21 in. 2 pc. Sunday Evening Supper or Buffet Set |



Cascade

GENUINE
HAND MADE
Cambridge
MADE IN U.S.A.



1



2



3



9



11



14



15



96



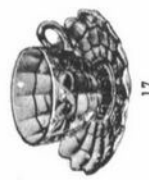
96



16



164



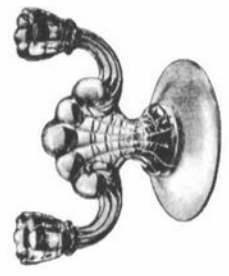
17



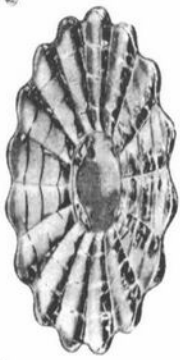
90



89



72



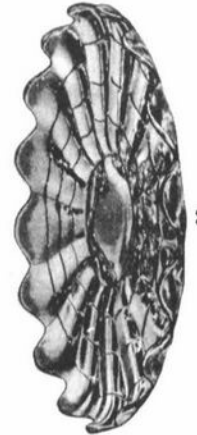
26



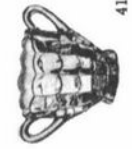
21



22



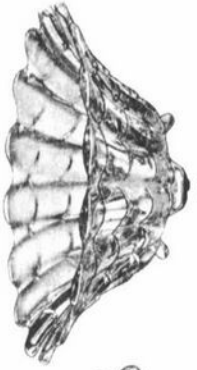
33



41



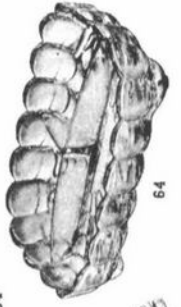
82



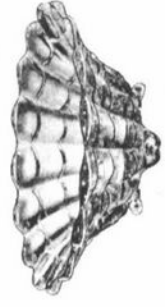
62



67



64



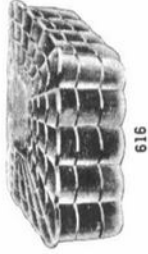
54



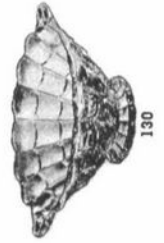
81



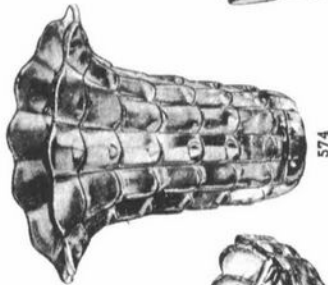
185



616



130



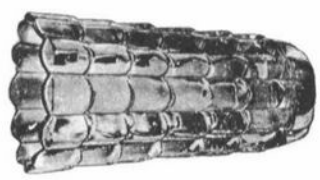
574



129



216



573



131



136



214



215

Club News

National Cambridge Collectors, Inc.
Quarterly Meeting
November 2, 1985
Elks Club, Cambridge, Ohio

The meeting was called to order at 8:05 p.m. by President Kolb. In attendance were 10 Board members and 32 members and guests.

The minutes of the previous meeting held on August 25, 1985 were read by Janice Hughes and approved.

The Treasurer's report was given by Bill Smith showing the Operating Equity as of September 30, 1985 to be \$23,394.84 and the Museum Equity \$117,424.69. He also stated members still have time to donate to the Mold or Museum fund before the end of the year.

COMMITTEE REPORTS

CONVENTION: Chairman Dave Rankin reported the Convention in 1986 will be at Shenandoah Inn and in 1987 at Salt Fork Lodge.

MEMBERSHIP: Chairman Phyllis Smith reported we now have 1,245 members.

CRYSTAL BALL: Editor Phyllis Smith reported the November issue was mailed on October 29. We now have members in all the states and Canada except Hawaii, Idaho, North Dakota and Rhode Island. She stated the CRYSTAL BALL needs ads and articles.

MUSEUM: Chairman Bill Harbaugh reported the Museum will be closing for the winter on November 3. He also stated interior of both buildings should be completed by next June.

Mr. James Moss, son-in-law of Mr. Edwin Griffith, reported with the death of Mr. Griffith last month, it was the end of the LaFlo Cut Glass Company. He reported Mrs. Floetta Griffith is donating several items from the Cambridge Glass Company to the Museum, including marking, selecting, cutting, polishing, washing and packing departments. (Mr. Griffith had previously donated seventeen stem molds.)

President Kolb reported the new service building is completed and has been inspected and is already too small.

AUCTION: Chairman Lynn Welker reported the Auction will be on March 1 at Shenandoah Inn. He has 350 lots so the Auction will start one half hour earlier. The list will be in the January CRYSTAL BALL.

NOMINATING: President Kolb announced the Nominating Committee as follows: Harold Snyder, Marshallville, Ohio; Barbara Harbaugh, Senecaville, Ohio; Carole West, Springfield, Ohio; Reba Embree, Cambridge, Ohio and Bill Smith, Chairman, Springfield, Ohio.

PUBLIC RELATIONS: Bill Smith reported they have attended two shows recently.

OLD BUSINESS: President Kolb announced the August Quarterly Meeting for 1986 will be a picnic on Saturday.

NEW BUSINESS: Dave Rankin reported on the club purchasing a computer. He has contacted NCR about a donation.

Karen Jones asked about the city and county plans for the Cambridge Glass Company factory. It was reported this is still in the planning stage. President Kolb will send a letter to the Guernsey County Commissioners and the Visitors and Convention Bureau informing them of our support.

President Kolb conducted a mini-auction that realized \$112.50

Show & Tell was presented by Lynn Welker

Frank Wollenhaupt presented a slide program on the past display rooms and shows.

A motion was made by Frank Wollenhaupt to adjourn at 9:45 p.m.

JANICE HUGHES, Secretary



"SHOW & TELL" AT QUARTERLY MEETING

WE GET LETTERS

Dear Mrs. Smith, As a new member of the National Cambridge Collectors I am writing to say how interesting I found the Crystal Ball. I would be interested in purchasing past issues. Would you please let me know how many back issues are available so that I can send you a cheque.

Unfortunately, my distance from Ohio makes it impossible for me to volunteer my services, but I would be very happy to be of whatever assistance I can. (Are there any other N.Y. vicinity members?)

I do have a question that maybe the members of the organization could answer. I have a few pieces of Chantilly etched - with sterling silver bases - a 12" bowl, salt & pepper, and an individual size sugar and creamer. Someone told me these were anniversary gifts of the time. I have not been able to find out any other information. Can you enlighten me? Also, I have the Cambridge catalogues and price lists but they are not listed. Is there a book about this - and how can I find an approximate value for these pieces?

Again, let me say how pleased I am to be a member of the National Cambridge Collectors, and thank you for all your assistance.

Sincerely, Barbara Ritchin, NY

Dear Barbara, Of course I have already written to you, but I hope you won't mind my using your letter in our "Letters" column. First let me say thank you once again for your kind words concerning the Crystal Ball and your pleasure in being a member of NCC. We never tire of hearing that sort of praise.

All of the back issues of the CRYSTAL BALL are available to our members and can be purchased in groups of 12 for \$7 or at 60 cents for single copies of less than 12. This issue, December 1985, is ISSUE NO. 152 . . so if a new member wanted to purchase the first 151 issues, the simple arithmetic would work out to \$88.20.

We have two Study Groups in NY. I hope you were able to attend the All-Glass Show sponsored by the Tuscan Crowns Study Group in Massapequa, NY, and meet some of their members over Thanksgiving weekend. The other group meets in the Fingerlakes area.

You quite probably answered your own question on Chantilly etched pieces with sterling silver base when you offered the suggestion that they were Anniversary gifts. The glass was purchased from Cambridge by the silver maker (Wallace Silversmiths, Toronto, Canada) and then sold by them--as opposed to being sold by Cambridge. Cambridge did do some silver decorating during the 1930s, but not of the type you are talking about. Examples of the Cambridge silver decorations can be found in the 1930-34 NCC Catalog Reprint.

I know of no book on this subject and I am afraid that we cannot help you with prices. However, our dealers who advertise in the Crystal Ball are all very knowledgeable about such things and I would suggest that you read their ads and contact them with any questions. Be sure to enclose a SASE (self-addressed, stamped, envelope) if you require a reply. Thanks again for your kind letter.

PHYLLIS

Study Club News

STUDY GROUP #7 - EASTERN OHIO
"THE CAMBRIDGE BUFFS"
Phone: 614/432-5230

The Cambridge Buffs Study Group held their October meeting at the home of Mr. & Mrs. Thomas Gray. There were eight members present. Our next meeting will be held at the home of Roy and Doris Isaacs.

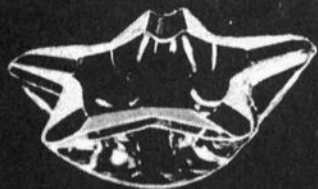
Study for the evening was on vases. On display were: milk glass Caprice, Mt. Vernon, Everglade, Cascade and Cornucopia; ebon Cambridge Square; green Aero Optic; vase cordials; vases decorated w/Talisman Rose, gold etched Wildflower, and Lily of the Valley; vases in opaque colors of jade, primrose, helio, and crown tuscan; Buzz Saw; pink Crackle; green Everglade; green Weatherford; Narcissus bulb vases in royal blue and emerald.

"Show & Tell" items included: goblet cut Lily of the Valley; swirl cordial; #3077 amber cordial, mocha nut dish; Buzz Saw berry dish. Charles Upton showed colored slides of the decorations done by the Lotus Glass Company of Barnesville, Ohio.

submitted by Deanne Gray



SMOKERS' ITEMS



P.731—6½ in. Star Ash Tray



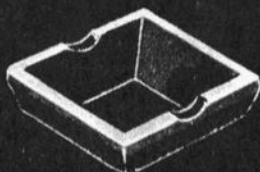
P.726—5 in. Star Ash Tray



1040—3 in. Swan Ash Tray



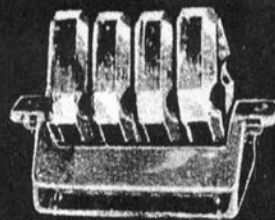
P.721—2½ in. Ash Tray, Square



P.725—3½ in. Ash Tray, Square



P.732—3½ in. Ash Tray, Square



P.728—5 pc. Ash Tray Set



C.214—3 in. Ash Tray



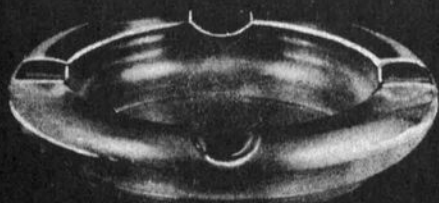
C.215—4 in. Ash Tray



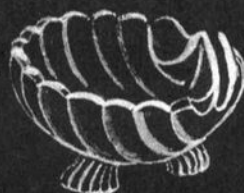
C.216—5 in. Ash Tray



C. 214 215 216—3 pc. Ash Tray Set



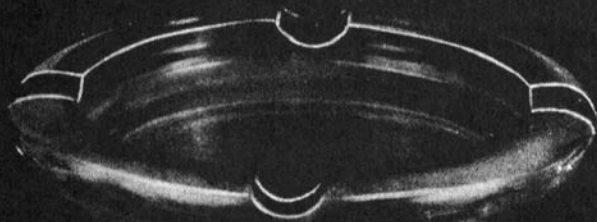
390—6 in. Ash Tray



C.213—2¾ in. 3 Ftd. Ash Tray w placocard holder



C.207—3½x2½ in. Cigarette Box & Cover



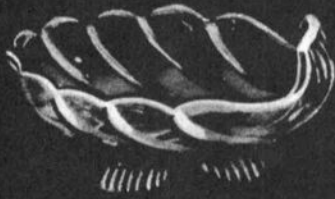
391—6 in. Ash Tray



C.208—4½x3½ in. Cigarette Box & Cover



SMOKERS' ITEMS



Sea Shell 33—4 in. 3 Ftd. Ash Tray



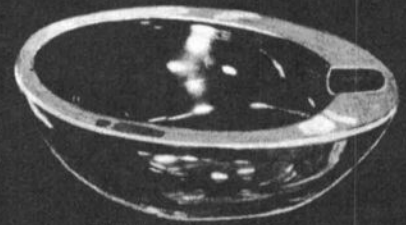
Sea Shell 34—4 in. 3 Ftd. Ash Tray



P.733—3 in. Ash Tray



P.734—4 1/2 in. Ash Tray



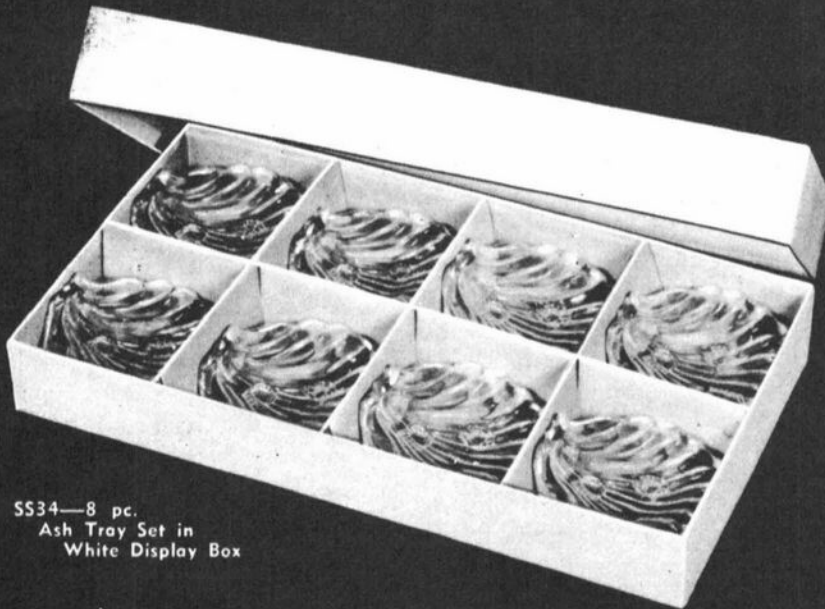
P.735—6 in. Ash Tray



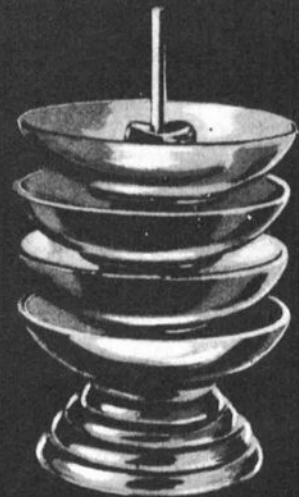
P.733 4 5—3 pc. Ash Tray Set



C.207 213—5 pc. Cigarette Set in White Display Box



SS34—8 pc. Ash Tray Set in White Display Box



"Stackaway" Ash Tray Set



NCC CHRISTMAS GIFT IDEAS

When making up your Christmas list this year, don't forget to add a membership in NCC for that special friend or relative who loves glass!

Send in their name and address (\$13 for individual member and \$3 for each associate living in the same house) to reach us by December 5th, and we'll send a greeting card with your name and their membership card(s) enclosed, to reach them in time for Christmas. Their membership will begin with the January 1986 issue of the CRYSTAL BALL. HURRY - TIME IS SHORT!

If a new membership isn't just what you're looking for, then how about a new book. See page 2 for a complete listing. Don't forget that two new books have been published this year. One on NEAR CUT, and one on CAMBRIDGE STEMS. Also, the new price guide for the 1930-34 and 1949-53 NCC Catalog Reprints (they have been combined into one book) is now available.

If you are looking for "stocking stuffers," we still have a few of those cute little "pencil dog" Cup Plates in crystal, cobalt, teal and amethyst at just \$7 each, plus \$1 postage and handling. These come individually boxed and ready to wrap. Better order these quick - there aren't too many left!

The frosted ebony Scotty Dog bookends would make a nice gift for anyone and at only \$30 each, plus \$3 postage and handling, they are a collectible that is bound to increase in value as the years go by.

. . . if you live in Ohio, please add 6% state sales tax.

Make your checks payable to National Cambridge Collectors, Inc., and mail to: N.C.C., Inc., P.O. Box 416, Cambridge, OH 43725.

FOR SALE

CAMBRIDGE BLUE CAPRICE

- #17 cup & saucer (8)
- #41 sugar & cream (pair)
- 2 oz. oil, crystal stopper (1)
- #102 9" pickle (1)
- #130 7" low ftd. comport (1)
- #151 5" 2-hdld. jelly (1)
- #96 salt & pepper, plastic tops, (pair)
- #70 7" candlesticks, alpine, (pair)
- #131 8" low ftd. plate (1)
- #300 12 oz. ftd. tumbler (5 perfect, 1 sm. chip, 1 flake)
- #21 6 1/2" bread & butter plate (1)
- #23 7 1/2" salad plate (1)
- #22 8 1/2" salad plate (7)
- #24 9 1/2" dinner plate (5)



SOLD AS A SET ONLY! \$850.00 FIRM!

JIM KENNON

P.O. Box 251, Amherst, OH 44001
216 / 233-7764

STAGE COACH ANTIQUE MALL

(formerly White Pillars Antiques)

Doris & Roy Isaacs

7525 East Pike
Norwich, OH 43767

614/872-3720



MANY DEALERS. . .

PLENTY OF PARKING. . .

**WIDE SELECTION OF GLASS
AND POTTERY
FURNITURE AND
GENERAL LINE!**

BUY and SELL

OPEN YEAR ROUND

Weekdays - 10 AM - 5:30 PM

Sunday - 12 noon - 5:30 PM

Summer Evening Hours - by Chance!

Located 9 miles E. of Zanesville, OH, on I-70 to Norwich
Exit #164 - then 1/2 mile W. on Route 40.

— Classified —

BUYING: Caprice blue or Rosepoint by Cambridge; Rose or Orchid by Heisey; American, June, Fairfax, Versailles, Trojan, etc., by Fostoria; and Depression Glass in crystal or colors. **Nadine Pankow**, 207 S. Oakwood, Willow Springs, IL 60480. 312/839-5231

WANTED: Cambridge Portia etched glass. Crystal or colors. Provide description and price. **Bill Alexander**, 6270 Malvern, Troy, MI 48098.

FOR SALE: Caprice: (guaranteed old) #1 pressed 10 oz. blue goblet and #2 tall sherbet \$38 each; crystal #76 oval, 3-lite candleholder \$45. Rosepoint: #3500 cup and saucer set \$35; 6" 3-lite #3900/74 candlestick \$50. Everglade: (swans) crystal #18 shallow 3-toed 15" bowl \$50; #15 deep, crimped 11" bowl \$50. Cambridge Arms: peg vase \$25; 7" crimped top vase \$50; 4 candle arm \$55; 2 vase arm \$50. \$3 minimum shipping charge! **Billy Shumpert**, 1246 Boggan, Tupelo, MS 38801. 601/842-6716

FOR SALE: Cambridge Everglade: 17" plate \$25; creamer sugar \$20; 7 sherbets \$9 each; 8 8 1/2" plates \$8 each; or best offer. Perfect. **Stephens**, 116 North Hopkins, Sayre, PA 18840.

FOR SALE: Console set: #3400/4 12" bowl & pair #3400/627 6" duo candleholders, Heatherbloom with Portia etch, \$350. Rosepoint #3900/100 6 oz. oil, \$55; #3900/671 ice bucket, \$100. #3400/68 sugar and cream, carmen \$35; #1095 sugar and cream on tray, pink w/unknown cutting, \$35. #1095 crystal sugar and cream on black tray, \$30. All pieces mint, UPS charges extra. **Linda Douglas**, 2558 Cornell Drive, Lapeer, MI 48446. 313/664-8069 6-11 pm EST or weekends only.

*This time, like
all times, is a
very good one if
we but know
what to do with it.*

Emerson



CLASSIQUE GLASS CO.

Box 52572 Tulsa, Oklahoma 74152
(918) 585-3203



CAPRICE

12 oz. ftd. tumbler, pressed, blue.....	\$ 36.00
10 oz. goblet, pressed, blue....	37.50
10 oz. goblet, pressed, crystal (8) ea.....	12.50
#81 11 1/2" 3-ftd. bowl, blue alpine.....	62.50
#136 7" comport, blue.....	65.00
#67 2 1/2" single candle- stick, blue.....	18.50
#647 keyhole 2-lite candle- stick, blue, pair.....	75.00
#17 cup & saucer, blue (2) each set.....	35.00
#300 12 oz. ftd. tumbler (5) crystal, each.....	11.50
#165 3-ftd. candy w/lid, cry....	36.50
#124 8 1/2" 3-part celery- relish, blue.....	38.00
#208 cigarette box & cover, large, blue.....	49.50
#213 3-ftd. ind. ashtrays (2) blue, each.....	10.00
#22 8 1/2" salad plate, pistachio.....	19.00

CASCADE

#165 covered, ftd. candy, mandarin gold.....	36.00
#573 9 1/2" vase, mandarin gold.	45.00
#165 covered, ftd. candy, cry...	30.00

CROWN TUSCAN

14" Shell torte plate.....	47.50
13" Shell bowl.....	47.50
#1301 10" vase, gold Portia etch, marked crown tuscan, exquisite.....	95.00

PRISTINE

#285 2-part salad dressing and underplate.....	20.00
---------------------------------------------------	-------

HELIO

#96 Special Article, 1/2 lb. covered candy.....	70.00
----------------------------------------------------	-------

CHANTILLY ETCHED STEMS & OTHER ITEMS!
Call or Write!



COLUMBUS ANTIQUE FLEA MARKET (ANTIQUES & COLLECTIBLES)

Ohio State Fairgrounds - Lausche Building
Off I-71 Exit 17th Avenue - Columbus, Ohio

DECEMBER 1st — JANUARY 5th

Sunday Only - 7 A.M. to 4 P.M.
Show Admission \$1.00 - Under 12 Free
150 QUALITY DEALERS

SELLING Advertising Art Deco, books, Cambridge, clocks, coins, collec-
tibles, Depression glass, dolls, Fiesta, fine early furniture, Heisey, jewelry,
lamps, oak furniture, post cards, pottery, good primitives, tools and print
shop items

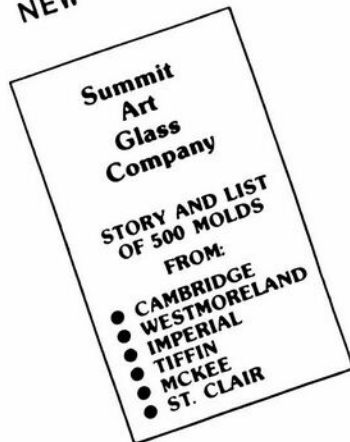
STOCKWELL PROMOTIONS

4214 North High Street
Columbus, Ohio 43214
(614) 267-8163/263-6830/885-2352

NEXT SHOWS: February 23, April 20, May 11, June 29, September 7, October 12, November 9, and December 14

NOW AVAILABLE !

NEW * NEW



FIND OUT WHICH MOLDS WERE
RECENTLY PURCHASED BY RUSS
VOGELSONG OF SUMMIT ART GLASS
COMPANY - COMPLETE LISTING!



MANY GLASS EXAMPLES ARE
SHOWN IN THIS SIXTEEN 'FULLY
PACKED' BOOKLET - VERY IN-
FORMATIVE!

JUST \$3.50 ppd.

Order today from: Glass Review Magazine, P.O. Box 542,
Marietta, OH 45750.





NADINE PANKOW

APPLE BLOSSOM - Etching

#3135 goblet, blue.....	\$ 35.00
#3400 grill plate, yellow.....	18.75
#3400 cup, yellow.....	12.75
#3400 sq. underliners, yellow (3)	2.75
#3400 2 1/2 oz. tumblers, " (6).	25.00
#3130 champagnes, yellow (5).....	14.75

CHANTILLY - Etching

#3625 goblets (12).....	\$ 18.00
#3625 champagnes (4).....	15.00
#3625 cocktails (3).....	18.00
5 1/2" flat, hdd., candy w/lid..	55.00
#70 7" candlestick w/prism.....	45.00
Flat cream & sugar.....	19.75
#3400/156 12oz. decanter in sterling.....	150.00
Oil & vinegar cone w/stopper on sterling base.....	85.00

CLEO - Etching

#627 4" candlestick, pink.....	\$ 15.00
#124 68 oz. pitcher w/lid, pink..	325.00
Butter bottom, amber.....	30.00
8 1/4" plates, green (11).....	7.50
Ice bucket, green.....	50.00

MISCELLANEOUS - Etchings & Patterns

<u>Diane</u> , amber, barrel tumblers (6) pitcher free w/all above...\$	25.00
<u>Portia</u> , #3121 champagnes (9).....	14.00
cocktails (8).....	16.50
wine.....	20.00
<u>Hunt Scene</u> , green champagnes (5).	25.00
Tally-Ho 18 oz. goblets, crystal (12).....	39.75
<u>Lorna</u> , pink, cheese & cracker....	42.50
<u>#520</u> , pink 8" plates (7).....	7.75
pink cups & saucers (7)....	7.00
or all for \$50.00	
<u>#731</u> , amber 12 oz. ice tea (4)...	12.00
<u>#732</u> , amber covered casserole....	85.00
<u>#739</u> , yellow #3130 cocktail.....	8.50
ebony #638 triple candle- sticks, pair.....	75.00
<u>Decagon</u> , ctr. hdd. plate, blue..	20.00
ctr. hdd. plate, pink.....	20.00
<u>Everglade</u> , #13 crystal 13" bowl..	49.75
blue 16" Buffalo bowl.....	195.00
<u>Nautilus</u> , royal blue shakers, pr.	65.00
<u>Pristine</u> , #84 2 oz. sherry (5)...	9.75
<u>Round</u> , pink 10 1/2" dinners (4)..	16.75
blue shakers, pr.....	40.00
<u>Sea Shell</u> , cream & sugar, cry....	25.00
6" flower center, crystal..	25.00
14" 3-toed plate, crystal..	39.25

NUDE STEM ITEMS

Brandy: amber (3); amethyst (2); dark green (2).....	\$115.00
gold krystal (4); carmen...	125.00
Cocktail: amethyst (3); dark green (2).....	115.00
carmen (3); royal blue (4); crystal w/ebony stem....	125.00
amber (2); gold krystal (2); CT stem w/yellow top (10)	120.00
cry. w/ebony stem; carmen w/frosted stem.....	145.00
Claret: carmen; royal blue.....	150.00
dk. grn. (3); amethyst (3).	140.00
Table Goblet: carmen (5).....	145.00
amethyst (6); dk. grn. (7).	135.00
Saucer Champagne: carmen (2).....	135.00
Ash Tray: dark green (2).....	200.00
carmen (2); royal blue.....	225.00
Cigarette Box: 9" crystal, engraved "FCH".....	325.00
7 1/2" CT gold encrusted...	475.00
Ivy Ball: CT; amethyst; carmen; crystal; royal blue.....	175.00
carmen and royal blue, with frosted stems.....	250.00
Compote, cupped: 8" crystal; dark green; carmen; & 7" carmen.	120.00
Compote, flared: 8" dark green; amethyst.....	120.00
Compote SS/10: 5 1/2" CT; cryst..	155.00
CT w/flowers/gold.....	175.00
Compote SS/11: 7 3/4" CT.....	155.00
windsor blue.....	455.00
Candlestick: windsor blue w/ bobeche.....	325.00
CT pedal out/gold trim, pr.	250.00
CT w/bobeche/gold " , pr.	300.00
Flying Lady bowl: CT w/gold.....	225.00
amber.....	775.00
windsor blue.....	850.00

CROWN TUSCAN

Electric 21" Lamp from 12" Nautilus vase.....	\$150.00
Candy, 6" ftd., covered.....	85.00
Candy, 6" ftd., covered, w/gold..	85.00
Cigarette box w/lid.....	55.00
Cigarette box w/lid, w/flowers...	75.00
#1299 11" ftd. vase.....	49.50
#1617 11" ftd. vase.....	49.50
Covered candy, 3-part.....	75.00
Covered candy, 3-part, w/flowers.	95.00
#66 4" ftd. Dolphin candles, pr..	175.00

NADINE PANKOW



OPAQUES

Windsor blue, 2" Sea Shell candleholders, pair.....	450.00
Ivory, Rams Head bowl & Doric candlesticks, set.....	350.00
Ebony, #648 3-lite candleholders etched, pair.....	49.50
Jade, 10 1/2" ctr. hldd. tray....	35.00
Jade, 9 1/2" column candles, pr..	49.75
Azurite, 9 1/2" column " , pr..	55.00
Azurite, 10" sq. base " , pr..	60.00
Azurite, 8 1/2" bowl.....	30.00
Azurite, 7" bowl w/gold.....	25.00

SWANS

Crystal, 10 1/2".....	\$ 85.00
Crystal, 8".....	35.00
Crystal, 4 1/2".....	15.00
Crystal, 3 1/2".....	15.00
Pink, 10 1/2".....	200.00
Pink, 3 1/2".....	29.75
Green (lt.) 3 1/2".....	35.00
Green (dk.) 3 1/2".....	45.00
Ebony, 10 1/2" & (2) 4 1/2" w/ cry. candle blocks, set....	375.00

CAPRICE - Moonlight

Covered candy, 6" ftd.....	\$ 70.00
Ice tea, thin (8) ea.....	25.00
Sherbet, thin (12) ea.....	19.50
Ftd. juice, thin (5) ea.....	24.50
Oval tray, 10 1/2" x 5".....	25.00
Ball pitcher.....	175.00
Coasters (2) ea.....	20.00
Alpine, 4 1/2" bowls (12) ea.....	39.50
Alpine, #70 candlesticks w/prisms, pair.....	55.00

CAPRICE - Crystal

Goblet, thin (6) ea.....	\$ 12.00
Cocktail, thin (5) ea.....	14.25
Sherbet, low thin (6) ea.....	5.75
Dinner plate, 9 1/2" (6) ea.....	32.50
Plate, 6" (8) ea.....	4.25
Cups & saucers (11).....	10.00
Ball jug pitcher (2) ea.....	60.00
#65 11" bowl, 4-toed, hldd.....	12.00
#70 7" candlesticks w/prisms (2 pair) ea. pair.....	25.00
#188 2 oz. tumblers (5) ea.....	12.00
#1358/5, 3-lite epergne w/arms, vases & bobèches.....	100.00
#1358/8, same (ref: WII, pg. 29).	100.00
Ashtray/cardholders (4) ea.....	8.00
Alpine, Ball water pitcher.....	99.50

CAPRICE - Ebony & Crystal

Ebony cigarette box w/crystal lid & 2 ebony on lid ashtrays..	\$125.00
------------------------------------------------------------------	----------

CAMBRIDGE - Miscellaneous

Decanter & stopper "Scotch".....	\$ 65.00
#324 relish, 12" 6-piece, amber w/gold.....	29.75
P101 3-piece cocktail shaker.....	40.00
Stackaway ashtray set, 5-piece...	45.00
Stackaway ashtray, yellow.....	5.00
#3143/50 Gyro Optic tumbler, 13 oz., moonlight (12) ea..	8.75
#1206 Spiral Rib flat tumbler 12 oz., moonlight (6) ea...	8.50
8" round plate, amethyst (8) ea..	4.75
NCC 1974 Commemorative Plate, blue (4) ea.....	35.00
Ivy ball, keyhole stem crown tuscan.....	32.50
amethyst (2) ea.....	29.75
green.....	29.75
#3121 comport, w/amethyst bowl...	29.75
Farber comport, 7 1/2" w/amber bowl.....	19.75
Amber 10" vase w/keyhole stem....	25.00
#1358 3-lite candelabra, arms, vases & bobèches w/prisms..	100.00
Scotty bookend, crystal.....	65.00
Eagle bookend, crystal.....	60.00

LIQUOR SETS

Amber Keg set - open barrel w/2 tumblers, rack & tray, set.\$	85.00
#3400/113 amber 35 oz. decanter & #3109 2 oz. tumblers (6) in tall Farber, set.....	99.50
#1321 28 oz. decanter, amethyst..	47.50
#3400/156 dk. green 12 oz. decanter & 1 1/2 oz. tall tumblers (7), in Farber w/ big ctr. hldd. tray.....	95.00

PITCHERS & WATER SETS

#58 3 1/2 pt. juice pitcher amber.....	\$ 25.00
pink w/Martha etch & 2 juice tumblers, set....	125.00
#937 68 oz. pitcher, deep amber Chrysanthemum etch.....	95.00
#119 83 oz. pitcher green w/Tulip etch.....	75.00
same as above w/#1630 12 oz. tumblers (6) set.....	125.00
pink w/etch similar to Gloria & #1630 12 oz. tumblers (3) - "C" struck twice - set.....	150.00



continued on next page



NADINE PANKOW

ROSEPOINT - Etching

<u>#3400:</u>	9 1/2" dinner plates (8)...	\$ 75.00
	8 1/2" plates (12).....	15.00
	7 1/2" plates (12).....	15.00
	cups & saucers (8).....	40.00
	#1181 6" 2-hdld. plate.....	12.00
	#851 ice bucket.....	150.00
	#1180 5 1/4" 2-hdld. bonbon.	32.50
	#91 8" 3-part relish.....	42.50
	#90 8" 2-part relish.....	39.50
	#7 5 1/4" cheese comport...	32.50
	#74 5" 4-toed nut dish.....	75.00
	#141 Doulton pitcher.....	300.00
	#4 12" 4-toed flared bowl..	45.00
	#168 10 1/2" bowl.....	47.50
	#48 13" 4-toed, fancy edge, shallow bowl.....	65.00
	#52 bottom for butter.....	50.00
	#77 shakers, pair.....	45.00
	#77 shaker, single.....	22.00
	#59 9" pickle tray.....	49.50
<u>#3900:</u>	#123 7" relish.....	35.00
	#41 cream & sugar, pair....	36.00
	13 oz. barrel tumblers (6).	45.00
	#671 ice bucket.....	165.00
	10 1/2" dinner plate (12)..	95.00
	8" plate (12).....	15.00
	7 1/4" plate (12).....	15.00
	#120 5-part celery/relish..	75.00
	#68 5" candlestick.....	65.00
	#111 4-pc. mayo set.....	85.00
	#131 9" hdld. plate.....	29.75
	#126 12" 3-part relish.....	65.00
<u>#3121</u>	Stems: goblets (12).....	20.00
	low sherbets (12).....	17.75
	champagnes (18).....	20.00
	cocktails (12).....	27.00
	clarets (6).....	65.00
	ftd. juice tumblers (8)....	29.50
	cordials (10).....	60.00
	10 oz. ftd. tumblers (4)...	28.00
	oyster cocktails (12).....	37.50
	wines (12).....	55.00
	clarets, gold encrusted (8)	75.00
	5 1/2" open candy, blown...	125.00

<u>#3500:</u>	cups & saucers (8).....	\$ 40.00
	cream & sugar, pair.....	39.50
	8" plate (8).....	15.00
	5 oz. cafe parfait (6)....	60.00
	cocktails (12).....	30.00
	champagnes (9).....	22.00
	oyster cocktails (5).....	42.50
	dinner bell.....	60.00
	#55 6" hdld. basket.....	40.00
	#71 7 1/2" 3-part center hdld. relish.....	150.00
	#64 10" 4-toed, 3-part relish.....	45.00
	#61 6 1/2" loop hdld. 3-part relish.....	95.00
	#57 8" 3-part candy w/lid..	75.00
	#148 8" comport.....	95.00
	#78 6" candy w/lid, rams head handles.....	275.00
	#652 12" celery.....	59.75
	#69 6 1/2" 3-part relish on sterling RP base.....	75.00

MISCELLANEOUS - Rosepoint

(Is there really such a thing?)

#1533	4 1/2" blown cheese/butter cover.....	\$525.00
M170	13" ftd. cake salver.....	275.00
P130	14" blown torte plate.....	175.00
#797	8" flip vase.....	150.00
#1242	11" vase.....	175.00
#1337	cigarette holder w/wash- tray foot.....	150.00
#147	8 oz. marmalade & plate....	75.00
#1523	3-piece mayo set.....	42.75
#1402/89	6" 2 hdld. nappy.....	32.75
P360	salt shaker.....	45.00
	Martha cream & sugar.....	45.00
#647	2-lite keyhole candles, pr..	65.00
	Calla Lilly candlesticks, pr....	375.00
#7966	cone sherry (6).....	95.00
	Martha #495 2-lite candles, pr...	75.00
#968	2-pc. shrimp cocktail (8)...	65.00

Priced each or in sets. All pieces MINT!
 Seven (7) day return with sticker intact
 . . NO EXCEPTIONS! UPS - \$3 minimum!

NADINE PANKOW

207 S. Oakwood
 Willow Springs, IL 60480
 312 / 839-5231

HAPPY HOLIDAYS!



DEALERS DIRECTORY



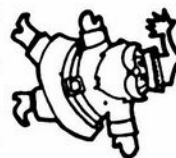
NOTE When writing to the Dealers listed here please enclose a SASE!

<p>THE GLASS URN 456 West Main Street, Suite G. Mesa, AZ 85201 602 / 833-2702 Mail Order Shows Open Shop CAMBRIDGE, FOSTORIA, HEISEY, ETC.</p>		
<p>EVELYN M. ALLEN 135 Cynthia Street Heath, Ohio 43055 Mail Order & Shows 614-522-1635 SPECIALIZING IN CAMBRIDGE GLASS!</p>	<p>BENICIA ANTIQUE SHOP 305 First Street Benicia, California 94510 OPEN 11 AM - 5 PM Closed Monday Z. E. LOPES 707-745-0978</p>	<p>CHARLES MIKULIK Box 416 Elizabeth, N.J. 07207 — COLLECTOR — Always paying good prices for CAMBRIDGE CAPRICE in all colors 201-688-1144 CARRY MOST TYPES OF ANTIQUES</p>
<p>ANDREJCAK'S ANTIQUES 14533 Bayes Ave. Lakewood, Ohio 44107 Joe & Karen Andrejcek 216-226-3417 SHOWS ONLY — CAMBRIDGE — FENTON — CHINA</p>	<p>VISIT HISTORIC BENICIA and its 28 shops Off Interstate #80 North of San Francisco</p>	
<p>ABRAHANTE'S Matching Service Discontinued China, Crystal & Flatware Patterns 7288 S.W. 40th Street Miami, FL 33155 PHONE: 305 / 262-7336 BUY & SELL</p>	<p>RICHARD BENNETT 64183 Warne Drive, Cambridge, OH 43725 Phone: 614 / 432-4483 SPECIALIZING IN CAMBRIDGE GLASS Stagecoach Mall - Bldg. 3 - Norwich, OH</p>	<p>BERKELEY ANTIQUES 69 Berkeley St. Boston, MA 02116 George or Frank 617-426-1048 CAMBRIDGE, HEISEY, GENERAL LINE</p>
<p>MOSTLY HEISEY 16 Clayton Place, Albany, NY 12209 Rhoda Curley 518 / 482-6272 SHOP and MAIL ORDER</p>	<p>D & D ANTIQUES Columbus, Ohio DICK SLIFKO SHOWS ONLY</p>	<p>THE GLASS MENAGERIE 322 Market Street: Suite 101 Denton, Maryland 21629 Barbara & Bill Danels 301/822-8794 SPECIALIZING IN GLASSWARE OF THE DEPRESSION ERA</p>
<p>THE GLASS CUPBOARD 39 Shire Oaks Drive Pittsford, New York 14534 Marcia Ellis 716-586-7596 CAMBRIDGE ONLY INQUIRIES INVITED</p>	<p>JUDY'S ANTIQUES Judy Bennett 422 S. Ninth Street (Corner of Jefferson) Cambridge, Ohio 43725 BUYING Ph. 614-432-5855 SELLING <i>Cambridge Glass my Specialty</i></p>	<p>"Happiness Is" - The Stultzs 3106 Warren Ct., Glen Allen, VA 32060 Shows and Mail (Richmond Area) 804/262-1273 GLASS CIRCA 1890-1960</p>
<p>PEG AND DALE GOTSCHALL Antiques, Cambridge and Other Quality Glass 833 N. 6th St., Cambridge, Ohio 43725 Phone 614/432-5529 Stagecoach Mall — Bldg. 2 — Norwich, Ohio</p>	<p>GREEN ACRES FARM 2678 Hazelton Etna Rd., Pataskala, OH 43062 (State Route 310 North) Sat. & Sun. 1-7 PM 614/927-1882 Antiques, Crystal Glass and Collectibles</p>	<p>HENDERSON'S ANTIQUES 303 Guilford Ave., Woodsfield, OH 43793 Mary & Wilbur 614/472-1133 SPECIALIZING IN CAMBRIDGE GLASS Shows, Mail & Stagecoach Antique Mall</p>
<p>THE HITCHING POST 7467 S. R. 88 Ravenna, OH 44266 Ph. 216-296-3686 D. McDaniel CAMBRIDGE — HEISEY — GENERAL LINE</p>	<p>TASTE OF HONEY <i>Glassware - Collectibles</i> Clarke & Carole West 3433 Turner Drive Springfield, Ohio 45504 SHOWS ONLY</p>	<p>1886 HOUSE East Schodack, N.Y. 12063 MAIL and SHOWS Laurie Cruise 518-477-5895 CAMBRIDGE - MORITAKE - AZALEA - D.G.</p>
<p>L & M ANTIQUES 1331 S.E. 4th Ave., Pompano Beach, FL 33060 Lydia & Cliff McNeil 305/943-2274 CAMBRIDGE & FOSTORIA OUR SPECIALTY Buy & Sell Shows Only</p>	<p>SHIRLEY S. LADOUCEUR Antiques and Collectibles Specializing in Cambridge Glass BY APPOINTMENT 7597 Daphne Drive 315-458-5297 No. Syracuse, NY 13212</p>	<p>MARGARET LANE ANTIQUES 2 E. Main St., New Concord, OH 43762 Lynn Welker 614/826-4418 CAMBRIDGE GLASS MATCHING SERVICE Hours Mon.-Fri. 1-5 PM or by Appointment</p>
<p>THE COUNTRY PEDDLER ANTIQUES 111 W. Main St., New Concord, OH 43762 JACK & SHARON BOGART PHONE 614/826-7439 BUY SELL APPRAISE REFINISH General Line-Cambridge Glass Stagecoach Mall — Bldg. 2 — Norwich, Ohio</p>	<p>AL STEELE Westerville, Ohio 614-882-6483 or 614-882-7124 Mail Orders and Shows Only HEISEY — CAMBRIDGE — PATTERN GLASS</p>	<p>SKYLINE DRIVE ANTIQUES 5432 Skyline Drive, Cambridge, OH 43725 Drew & Donna Davis 614 / 432-2621 SPECIALIZING IN CAMBRIDGE GLASS! Shows Mail Order Matching Service</p>



A nonprofit organization dedicated to the preservation and study of Cambridge Glass

National Cambridge Collectors, Inc.
P O Box 416, CAMBRIDGE, OHIO 43725



You Are Cordially Invited
To Become A Member Of The

NATIONAL CAMBRIDGE COLLECTORS, INC

Benefits derived from membership include receipt of our club publication. The Cambridge CRYSTAL BALL, informative Quarterly Meetings: Antique Shows, Auctions, and other special events.

The Cambridge CRYSTAL BALL is published the first of each month. This newsletter contains educational and interesting articles, questions and answers, information on reproductions and reissues, notices of all club functions, classified advertisements, dealers directory, and many other features of interest to collectors of Cambridge Glass.

Yearly dues are \$13.00 for Individual Members and \$3.00 for each Associate Member. All members have voting rights, but only one issue of the CRYSTAL BALL will be mailed per household.

Name (please print) _____ \$13.00

Mailing Address _____

City _____ State _____ Zip _____

Associate Members: (Must be at least 12 years of age and living in the same household)

1. Name _____

2. Name _____

3. Name _____

Total number of Associate Members _____ @ \$3.00 each \$ _____

TOTAL AMOUNT ENCLOSED \$ _____

Please make check payable to: NATIONAL CAMBRIDGE COLLECTORS, INC.

Recommended by _____

SUPPORT N.C.C. Give a "Gift of Membership!"

DATES FOR YOUR CALENDAR

FEBRUARY QUARTERLY MEETING

Friday, February 28, 1986 - 8 p.m.
SHENANDOAH INN
Old Washington, Ohio

ALL-CAMBRIDGE GLASS AUCTION

Saturday, March 1, 1986 - 11 a.m.
SHENANDOAH INN
Old Washington, Ohio

1986 NCC CONVENTION

and

ANTIQUÉ SHOW & SALE

June 27, 28, 29, 1986
SHENANDOAH INN
Old Washington, Ohio



All above events to be held at:

THE SHENANDOAH INN

P.O. Box 147, Old Washington, Ohio 43768
I-70, Exit 186 — 7 Miles E. Of Cambridge
Phone 614-489-5511

Mention NCC When Making Reservations

National Cambridge Collectors, Inc.

P. O. Box 416 Cambridge, Ohio 43725

FIRST-CLASS MAIL
U.S. POSTAGE
PAID
So Vienna, Ohio
45369
Permit No 15

FIRST CLASS MAIL

