



Cambridge Crystal Ball

Published monthly by the National Cambridge Collectors, Inc.
to encourage and report the discovery of the elegant and boundless product
of the Cambridge Glass Company of Cambridge, Ohio

Issue No. 156

April 1986

THOUGHTS FROM YOUR PRESIDENT

We were treated well by someone last weekend! The weather was beautiful for the Auction. March came in like a beautiful lamb . . . however, the lamb has turned into a hungry lion only a week later. Temperatures are in the teens and we are having what is probably the worst blizzard of the season in this area.

Anyway, we had another very successful Auction this year. Very good attendance as usual, lots of beautiful glass, and as always some fine bargains! The list telling what each item sold for can be found inside on page 12. Thanks to Lynn Welker and all of his helpers for making it such a success. Also Thanks to Craig Connelly, our auctioneer, and of course, Thanks to all of you fine people who did all the bidding.

The Auction, along with the Annual Show & Sale are our prime money raisers during the year. But, "Look out Lynn and Joy!" Larry Hughes is determined to bring the Flea Market in line with you in so far as money raising projects are concerned.

Ed Sweeney from Centerville, Ohio, was the successful "Guesser" for our little "guesstimate" game during the Auction. For those of

you who don't understand what this is, we give everyone in attendance a slip on which they write down what they think the total Auction will bring. The closest to the final figure wins a prize. Ed missed it by \$6, and a lot of you were very close.

The Museum is now open for the season. As I explained at the Quarterly meeting, "PLEASE EXCUSE OUR DUST." We didn't remove the glass from the showcases and wash it and the showcases before opening this year. Everything else was cleaned and put in order before opening, but there were no drastic changes made in the displays. All of this is because we are still working and making a mess in the new addition. When the new showcases are finished (by May 1st we hope), we will be moving several of the displays and adding new ones. It didn't make sense to clean and move twice.

The new addition is progressing well. In fact we are ahead of our original schedule. Painting, lights and wiring, showcase frames, divider wall, and storage shelves have all been completed. The carpet, glass shelving and showcase doors, and the free standing showcases have all been ordered. The Audio-Visual equipment has all been delivered and the computer and all of its components should be delivered by the time you read this. This leaves only a thousand little things that will have to be completed before Convention.

Speaking of Convention, it isn't too soon to

continued on page 13

MEMBERSHIP RENEWAL NOTICE

If the date on your address label is..

4 - 86

This is your LAST ISSUE of the CRYSTAL BALL.
Please renew NOW!

CAMBRIDGE CRYSTAL BALL

Official publication of National Cambridge Collectors, Inc., a non-profit corporation with tax exempt status. Published once a month for the benefit of its members.

Membership is available for individual members at \$13 per year and additional members (12 years of age and residing in the household) at \$3 each. All members have voting rights, but only one *Crystal Ball* will be mailed per household.

Back issues of the *Crystal Ball* are available (beginning with Issue No. 1, May 1973) for members only. Cost \$5.60 each or 12 issues for \$7.

1984-85 OFFICERS & COMMITTEE CHAIRPERSONS

PRESIDENT	Willard P. Kolb
VICE-PRESIDENT	David B. Rankin
SECRETARY	Janice Y. Hughes
TREASURER	William C. Smith
SERGEANT-AT-ARMS	Marybelle Moorehead
BUDGET & FINANCE	David B. Rankin
BY-LAWS	David B. Rankin
CONVENTION	David B. Rankin
MEMBERSHIP	Phyllis D. Smith
MUSEUM	Billy Harbaugh
PROGRAM & ENTERTAINMENT ...	Frank Wollenhaupt
PROJECT	Willard P. Kolb
PUBLIC RELATIONS	William C. Smith
PUBLICITY	Joseph Andrejcek
STUDY GROUP ADVISOR	Evelyn M. Allen
1985 AUCTION	Lynn M. Welker
1985 ANTIQUE SHOW	Joy McFadden
1985 FLEA MARKET	Larry F. Hughes
CRYSTAL BALL EDITOR	Phyllis D. Smith

CLASSIFIED ADVERTISING RATES

5¢ per word \$1.00 minimum
We cannot mix type size in classified advertisements. Abbreviations and initials will count as words. Payment in full MUST accompany all ads.

DISPLAY ADVERTISING RATES

(camera ready ads preferred)

	Members	Non-Members
1 8 page (9 items)	\$4.00	\$6.00
1 4 Page (20 items)	7.00	10.00
1 2 page (20 items)	12.00	18.00
3 4 page	17.00	25.00
Full page (50 items)	22.00	33.00

DEALERS DIRECTORY

5 line maximum \$12.00 for 12 months
Cambridge *Crystal Ball* assumes no responsibility for items advertised and will not be responsible for error in price, description or other information.

Advertising copy, articles, club news and notices must be in our hands by the 10th of each month to assure publication in our next issue. Paid advertisements containing reproductions or new glass will not knowingly be accepted for publication.

Opinions or information stated in any signed article or letter printed in the *Crystal Ball* are those of the authors and may or may not agree with National Cambridge Collectors, Inc. The Editor reserves the right to refuse and to edit any material submitted for publication so as to conform with the editorial style of the *Crystal Ball*.

PLEASE ADDRESS ALL CORRESPONDENCE TO

National Cambridge Collectors, Inc.
P.O. Box 416 Cambridge, Ohio 43725

PRESIDENT: Willard Kolb 614/695-0695
SECRETARY: Janice Hughes 614/432-7823
EDITOR: Phyllis Smith 513/323-3888

NCC MUSEUM of Cambridge Glass is located on U.S. Route 40, 1/8 mile east of I-77 near Cambridge. Hours: 12 noon to 4 PM - Wednesday thru Sunday. (March thru October)

PLEASE NOTIFY US IMMEDIATELY OF ANY CHANGE IN YOUR ADDRESS

Please enclose a SASE when requesting information

CAMBRIDGE GLASS BOOKS FOR SALE

by National Cambridge Collectors, Inc.

* **COLORS IN CAMBRIDGE GLASS**
(128 pages - 60 color plates - fully indexed)
Hardbound with Price Guide \$19.95

* **1930-34 CAMBRIDGE GLASS CO. CATALOG REPRINT**
(250 page reprint of original catalog)
Hardbound with Price Guide \$14.95

* **1949-53 CAMBRIDGE GLASS CO. CATALOG REPRINT**
(300 page reprint of original catalog)
Hardbound with Price Guide \$14.95

* **1956-58 CAMBRIDGE GLASS CO. CATALOG REPRINT**
(164 page reprint of original catalog)
Paperback \$6.95

1985 COMBINED PRICE GUIDE

for 1930-34 & 1949-53 catalog reprints Postpaid \$5.75

*NCC MEMBERS ONLY: *These publications are available at 10% discount - or all four (4) at one time for \$50.00.*

by Mark Nye

CAMBRIDGE STEMWARE
(95 Stemware lines with 107 illustrations)
Paperback \$14.95

by Cambridge Buffs Study Group

NEARCUT
(108 page reprint of 1910 Cambridge Catalog)
Paperback with Price Guide \$9.95

by Mary, Lyle and Lynn Welker

CAMBRIDGE GLASS CO.
(120 pages of reprint from 8 old catalogs)
Paperback \$6.95

CAMBRIDGE GLASS CO. BOOK II
(119 pages of reprint from old catalogs)
Paperback \$6.95

CAMBRIDGE, OHIO GLASS IN COLOR II
Spiralbound \$5.95

by Harold and Judy Bennett

1903 CAMBRIDGE GLASS CO. CATALOG REPRINT
(106 page reprint of an original catalog)
Paperback \$7.50

Address your orders to:

BOOKS
National Cambridge Collectors, Inc.
P.O. Box 416
Cambridge, OH 43725

Please add \$1.00 (P & I) per order.

(Not required for Price Guide)

Ohio residents please add 6% state sales tax.

DEALER DISCOUNTS AVAILABLE - PLEASE WRITE!

CONVENTION PREVIEW

by DAVE RANKIN
Convention Chairman

It's just about time to make your final arrangements for the 1986 annual antique show and convention. Planning on this end is nearly complete and here is a preview.

The past 12-18 months have seen many developments in Cambridge glass, mostly as a result of the closing of Imperial Glass last year. The club obtained a lot of information in the liquidation; literature, molds and etching plates. This all came too late to have much impact on last year's convention. Additional new information was revealed in the 1927-1929 catalog reprinted by Bill and Phyllis Smith. As a result this year promises to be different.

To help bring you as much new information as we can, we have scheduled three of the most knowledgeable and involved speakers we could get. Last year's banquet speaker, Mark Nye, will start us off at the Saturday morning breakfast with a very informative talk. This year's theme is ETCHINGS, and Lynn Welker will present a slide program on etchings Saturday afternoon. The Saturday night banquet is always the highlight of the year and Bill Smith will present "Did You Know?" This promises to be a wide open discussion of newly discovered or clarified information on Cambridge glass. How many of you have seen the airplane beverage set?

For those of you who could not attend the quarterly meeting last August, we are planning another tour of the old Cambridge Glass factory. Friday's traditional tours of the operating factories will begin in the morning with tours of the Mosser Glass and Crystal Art Glass factories. After lunch, we will start the old Cambridge tour with the showing of "The Crystal Lady" film which shows several scenes from the old factory. This will be followed by a short talk and then the tour will proceed to the factory.

Sunday afternoon, we will again hold a reunion for the glass factory workers.

And if this isn't enough, we hope to be able to present several of the existing slide programs for those who have not had an opportunity to see them or for those who just want a refresher course.

As always, there will be an educational display room featuring etchings and the ever exciting three day antique show and the Saturday flea market.

Don't miss the most exciting convention ever. Plan now to attend June 27-29.

Club News

National Cambridge Collectors, Inc.
Quarterly Meeting
February 28, 1986
Shenandoah Inn, Old Washington, Ohio

The meeting was called to order at 8:11 PM by President Kolb. In attendance were 10 Board members and 50 members and guests.

The minutes of the previous meeting held on November 2, 1985 were read by Janice Hughes and approved.

The Treasurers report was given by Bill Smith showing the operating Equity as of December 31, 1985 to be \$26,772.80 and the Museum Equity \$118,689.27.

COMMITTEE REPORTS

CONVENTION: Chairman Dave Rankin reported Mark Nye will speak at the Saturday morning meeting, Lynn Welker in the afternoon, and Bill Smith at the Banquet. Mr. Smith's topic will be "etchings."

MEMBERSHIP: Chairman Phyllis Smith reported we now have 1,247 members, showing an increase of 43 for 1985. She asked everyone send renewals on time and seek new members.

CRYSTAL BALL: Editor Phyllis Smith reported the March issue was mailed on Thursday, February 27. There was a problem with the computer so there is only 16 pages.

She also reported the heading for the front page of the CRYSTAL BALL has been changed, thanks to a member from the new Study Group.

Mrs. Smith expressed her appreciation and thanks to Mark Nye, Charles Upton, and Willard Kolb for writing articles.

continued on page 4

CLUB NEWS continued from page 3

PROJECTS: Chairman Willard Kolb reported a new color cup plate will be ordered soon. Also, the bookend series will be continued, possibly with the eagle.

MUSEUM: Chairman Bill Harbaugh reported the Museum opened today, February 28. Work is continuing on the back room and should be completed by Convention. The new building will be finished within the next year.

President Kolb reported due to work on the back room, the front of the Museum has not been cleaned, but will be, and also rearranged by Convention.

FLEA MARKET: Chairman Larry Hughes reported the facilities will be improved this year. Contracts will be sent out soon.

President Kolb reported since the outside flea market spaces cannot be controlled, the price was increased to \$10.

PUBLIC RELATIONS: Bill Smith reported they would be attending several shows after Convention in Missouri, Indiana, Michigan and Ohio.

President Kolb thanked the members of the Tuscan Crowns Study Group for the \$600 donation.

OLD BUSINESS: Dave Rankin reported NCR cannot help with the donation of a computer, so a new one will be ordered.

President Kolb stated he had written to the Guernsey County Commissioners and the Visitors and Convention Bureau giving our support for their purchase of the old Cambridge Glass factory for possible use as a Convention Center, flea market, etc.

NEW BUSINESS: Barbara Harbaugh reported nominees for the Board of Directors are as follows:

- Tony Vimmer, Westchester, IL
- Mark Nye, Miami, FL
- Bill Smith, Springfield, OH
- Marlene Snyder, Marshallville, OH

President Kolb announced the floor open for nominations. There were none. President Kolb closed the nominations.

Dennis Snyder suggested NCC donate a piece of Cambridge Glass to the Henry Ford

Museum. Bill Smith will check with a contact he has at the Museum.

Mark Nye asked if there is a floor plan of the Cambridge Glass factory since there is a possibility of the buildings being altered and/or torn down. It was advised he check with Lynn Welker.

The door prizes were won by Gerald Landman and Marion Aron. The Mini-Auction realized \$25. Lynn Welker presented Show & Tell and reported on the Auction glass.

A motion was made by Frank Wollenhaupt to adjourn at 9:05 PM.

Janice Hughes, Secretary

Study Club News

STUDY GROUP #7 - EASTERN OHIO "THE CAMBRIDGE BUFFS"

The Cambridge Buffs Study Group held their meeting February 20th in the home of Jim and Shirley Douglas. There were eight members present.

The program for the evening was Crown Tuscan made by Cambridge and similar colors produced by such companies as Guernsey, Degenhart, Boyd, Westmoreland, etc. Pieces used for example to show the difference in the color included: a mustard jar, cigarette holder, vases, pencil dog, swans, and Sea Shell nut dishes by Cambridge; as well as many other pieces from the other companies. Show & Tell consisted of a Hazel Atlas cup; Imperial swan; Westmoreland cat; and a Cambridge blue miniature cup.

Pictures are being made by the Study Group to sell at the Convention. Next meeting will be held in the home of Charles and Mary Alice Upton.

submitted by Deanne Gray

STUDY GROUP #10 - LONG ISLAND, NY "THE TUSCAN CROWNS"

Phone: Charles or Loretta at 516/589-9168

February's meeting was held at the home of Gloria and Palmer Bunger with nine members present.

continued on page 13

THE DAILY JEFFERSONIAN

Cambridge History From News Articles

by CHARLES A. UPTON

(EDITOR'S NOTE: This series of Historical articles began in the February 1986 issue of the CRYSTAL BALL. Two or four pages will appear each month as space permits (printed back to back so they may be added to your research files if desired). From time to time we must stop right in the middle of an article and continue to the following month. This was the case last month. We apologize for this inconvenience. The article continues below . . .)

"THE GLASS PLANT" continued

This company is organized, simply to enable the town and its citizens to do collectively what no one can do alone, and if anyone can show a better plan for securing this great benefit to the town, the company is ready to retire. Its stockholders will not only pay for their stock but the tax also.

It is the intention, as we understand, to issue bonds, which will run at least twenty years, at 4 per cent, so that all we will have to pay within that time is \$300 a year, or about 25 cents, on the \$1000 of taxable value. The tax on property valued at \$250 to \$1000 for taxation, which will include the large majority of modest homes, will run from 6 cents to 25 cents a year. This will literally not be felt, and it will enable us to secure an industry which will add to our population more people than we had when the C. & M. Ry. was built.

Those who ought to know say this will be four times as big as the Byesville glass works, which has already required the building of one hundred and ten houses there, and that as many more are still needed. We estimate that these works will require the building of from five to eight hundred houses, will add from 2500 to 3000 to our population, and will increase our wealth more than \$1,000,000.

We ask everybody to support this plan, or devise a better one. R. V. Orme, W. H. McFarland, J. C. Beckett, T. W. Scott, J. W. Campbell, H. P. Woodworth, C. L. Campbell, S. A. Craig and Fred L. Rosemond.

#####

"THOSE WHO HAVE PAID IN 10 PER CENT"
The Daily Jeffersonian, Cambridge, Ohio.
Friday, November 16, 1900 . . . The directors

of the Cambridge Improvement Company authorize the publication of the names of those who have subscribed and paid the first call of ten per cent. Below are the names with the amount subscribed followed by amount paid.

J.W. Campbell \$2,000, \$200; J.C. Morton \$1,700, \$170; Fred L. Rosemond \$1,500, \$150; J.C. Beckett \$1,500, \$150; W.H. McFarland \$1,200, \$120; H.P. Woodworth \$1,000, \$100; Mary E. Campbell \$800, \$80; Charles S. McMahan \$800, \$80; S.A. Craig \$500, \$50; J.L. Looke \$500, \$50; T.W. Scott \$500, \$50; A.R. Murray \$500, \$50; W.B. Green \$400, \$40; R.D. Hood \$300, \$30; P.C. Patterson \$300, \$30.

The following have subscribed \$200 each and paid \$20 each; - J.B. Siegfried, Andy Sarchet, O.M. Hoge, Dr. T.C. White, Turner G. Brown, M.L. Hartley, M.R. Potter, C.C. Cosgrove, Ed McCollum, E.W. Mathews, S.W. Price, J.G. Bair, T.M. McFarland, F.R. Smith, J.C. Patterson, E.A. Patterson, Carpenter's Union, R.T. Scott, Stewart & Trenner, Teamster's Union, and Local Labor Union No. 7320.

The following have subscribed \$100 and paid \$10; - Wm. Wharton, Dr. A. Cooper, C.E. Warne, T.M. McBride, W.A. Hunt, Frank Prindle, Turnbaugh Bros., T.M. Bond, J.L. Roller, George Fultz, Hugh Williams W.S. McCarty, A.B. Clark, Joseph M. Wood, Mason's Union, C.W. Erven, G.T. Jones, T.G. Kerr, W. Forney, Mrs. R.H. Atkins, J.K. Casey, Trenner & Stewart, F. Zink, C.L. Casey, J.R. Barr, B. F. McDonald, F.B. Gardner, W.C. Suitt, H.R. Hawthorne, C.F. Gallup, R.W. McWilliams, Charles F. Duffey, R.A. Coleman, Alex Fulton, R.D. Barber, W.D. Baker, George Urban, Henry Coffman, T.J. Norris, Churchman and McCollum, South Side Hose Co., Will Scott, A.F. Hubert, Scott Plumbing Co., W.L. Boden, Branthoover & Johnson, R.M. Logan, C.L. Urban, J.H. Logan, M.H. Seins, W.C. Smith, George W. Smith, Morton C. Campbell, T.F. Marling.

#####

"MASS MEETING TONIGHT"
"RALLY FOR ELECTION TOMORROW"
The Daily Jeffersonian, Cambridge, Ohio.
Saturday, November 17, 1900 . . . Let everybody attend the mass meeting tonight to

continued on page 6

appoint rallying committees and take other necessary steps for the election tomorrow. This will be the last effort to secure the glass plant. It is feared that we are already too late. There are rumors that they will not come here but go to a nearby town. Let everyone put his shoulder to the wheel for one effort.

"THE GLASS WORKS"

During the past week, we have admitted all sides of the discussion concerning the proposed glass plant to a full hearing in these columns. The question has been quite fully discussed. The willing citizens have subscribed to the capital stock of the Improvement Co. to the extent of their ability as they think and according to the best judgement of those who have most carefully investigated, the sum is not ample.

The City council has proposed a plan to raise the balance and the proposition will be voted upon tomorrow. If the vote is against the proposed plan the improvement fails. If it is carried the improvement will be pushed as rapidly as possible.

This is, in our opinion, a severe test to our city. It will be a calamity to let this proposition fail. If it fails we greatly fear nothing in the way of improvement will soon again be acted upon or secured and Cambridge will begin to retrograde.

We regard the statement published in yesterday's Daily by the trustees of the Improvement Company as a very strong, fair statement and to our mind conclusive.

We do not like the idea of voting a tax upon unwilling property owners, but can see no other way of it if we secure the improvement and therefore urge upon all voters to cast their votes in its favor. If any citizen feels sufficiently aggrieved to attempt to stop the improvement, he has the undoubted right to do so to the extent of his legal rights. We favor the improvement with all our heart.

"VOTING PLACES"

The following places for voting on Saturday November 17th are given out by the trustees:

- First Ward - Hose House, Steubenville Avenue.
- Second Ward - Berwick Hotel
- Third Ward - Noel Hotel

The Daily Jeffersonian, Cambridge, Ohio.
Monday, November 19, 1900 . . . The mass meeting at the courthouse last evening was well attended. Judge E.W. Mathews was called on and spoke of the increase in value of property as a result of securing the C. & M. Railroad, rolling mill and other factories. As an illustration he used the property on the corner of Wheeling Avenue and 7th Street, which he said sold for \$44 per front foot in 1871, while today its worth \$208 per front foot, and that property all over the city had also increased in value. He said if we fail to secure the glass plant it will certainly be a calamity.

Rev. Dr. McFarland followed with a few remarks and J. D. Beckett said he was afraid that we would loose the industry because of the delay. He regretted that the matter had to go to council, but there was no other way to get the plant. Remarks were then made by J.H. Morgan, L.G. Haines and Charles S. Turnbaugh. Mr. Turnbaugh said that what was necessary was to organize and appoint committees from each ward to get out the vote.

On motion of Mr. Turnbaugh the citizens from each ward met in different parts of the room and organized ward committees to get out the vote and work at the polls. Adjourned to meet Tuesday evening at 7:30.

"OVERWHELMING"

The vote of Cambridge for Bonds 16 to 1, Yes.

The special election for the issue of bonds, by the city of Cambridge held on Saturday Nov. 17th resulted as follows: 1st Ward for 335, against 14; 2nd Ward for 229, against 19; 3rd Ward for 294, against 28; 4th Ward for 236, against 13; 5th Ward for 229, against 11. Total for 1,323, against 85.

There were 18 tickets not counted, being either improperly marked or not marked at all. This overwhelming vote shows the feeling of the citizens in regard to the proposed improvement and now all await the action of the management with much anxiety, hoping it will materially develop Greater Cambridge.

#####

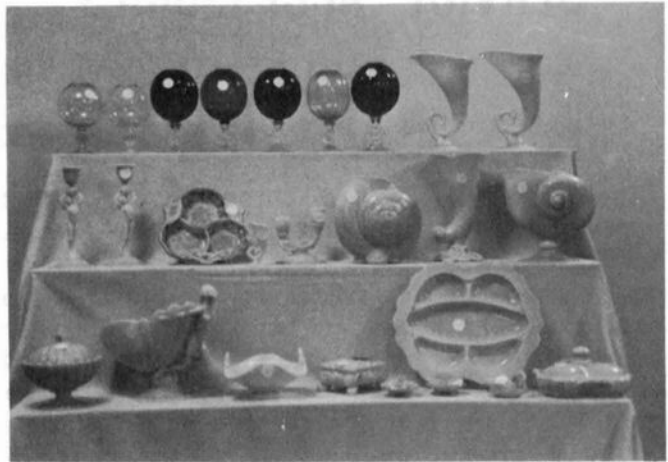
(Sorry we only have room for 2 pages this month . . . to be continued in the May '86 C.B.)

AUCTION OBSERVATIONS

by PHYLLIS SMITH

Our February Quarterly Meeting and Annual All-Cambridge Glass Auction is always well attended, and this year was no exception. The weather cooperated and many of those in attendance were here for the very first time. It was really nice to see so many "new" faces, and we certainly hope we will see them again real soon! We were sorry that a few of our "regular" faces didn't make it this time — hope it wasn't illness that kept them away. Whatever the reason, "we missed you!"

We had folks fly in from Massachusetts and Florida, as well as those who drove many miles to attend. It was great to see and visit with so many old and new friends, but I guess we have to admit that they didn't come to see us — they really came to buy Cambridge Glass!



And buy, they did! The blue Bashful Charlotte (6") sold for \$435; the Owl Lamp went home with the fellow who "came to buy" for a mere \$600; and one of many surprise buy's of the day were the crystal swan punch cups that sold for \$70 each!



The Auction was a lot of fun and almost everyone went home with something! As usual, there were prices that no one can explain. Some things went low that should have brought more and some things went higher than anyone would have thought. Put your prices (page 12) on your Auction list and you will see what I am talking about. There are several prices on there that will have you shaking your head.

SERVICE ACCESSORIES

PART I

by MARK A. NYE

The Cambridge catalog dated January 1940 contained four pages captioned "Unusual Service Accessories." Pieces shown on these pages range from several styles of icers to exotic serving dishes and back to a few rather mundane items. Most were not new items and also appear in other sections of the same catalog. Their appearance as a group was no doubt a promotional effort on the part of Cambridge to sell a selection of items in the general catalog that might otherwise have been overlooked.

Under the classification of "Unusual Service Accessories," this group of items was offered only in crystal, undecorated. However, since many date to prior years and were also shown elsewhere in the same 1940 catalog, many will be found in color and decorated, in addition to unadorned crystal blanks.

Two items shown on the first of the four pages date to before 1930; these are the #969 2-pc. Cocktail Icer (pressed) and the #968 2-pc. Cocktail Icer. A third, the #3400/41 3-pc. Frappe set was probably introduced around 1930. The #968 remained in the Cambridge line until the end of 1958 while the other two had been discontinued by June 1949.

In the 1930 catalog both the #969 and #968 are shown with a Decagon liner. The #968 later appears in the 1932 catalog supplement with a circular rimmed liner and this is the way it appears in later catalogs. There is little doubt that both icers were likely made in most of the 1930s pastel colors and that the #968 was etched with all of the major etchings from those years and perhaps some of the minor ones as well. The etchings will be found on crystal as well as colored blanks.

The #3400/41 3-pc. Frappe set was no doubt also made in the pastel shades of the 1930s as well as being made in crystal and sold plain and etched with many of the popular etchings of the day. The Frappe set is seldom encountered today, indicating it did not achieve the popularity the cocktail icers did.

While not listed under "Unusual Service

Accessories" as being made in color, the #968 2-pc. Icer is listed in the 1940 price list with various stemware lines that were being produced in color. In this manner we find the #968 Icer apparently being offered in amber, royal blue, dianthus pink, amethyst, forest green and moonlight, as well as crystal. Production of this icer in these colors at that time, if it in fact did take place, appears to have been rather limited, as few, if any, are seen today. There is no doubt about the other two items being made only in crystal during the 1940s as for them there are no ambiguous price list entries.

The #969 Icer was available from the 1940 catalog plain only, but such was not the case with the #968, and to a lesser extent for the #3400/41 Frappe set. The latter, in addition to being available plain, was offered etched Diane, Elaine and Portia.

The #968 Icer was a popular piece, produced during the early 1940s with six different etchings--Candlelight, Diane, Elaine, Portia, Rose Point, and Wildflower. All except Wildflower were also produced with the etchings gold encrusted. The Wildflower etched icer was made with a gold edge as were ones etched Rose Point and Elaine. In addition to the preceding, the #968 was made with D/1046, Gold Bands.

The #968 Icer continued to be a popular item throughout the 1940s and remained so as the 1950s opened. In the fall of 1950, it was available etched Candlelight, Chantilly, Diane, Elaine, Portia, Rose Point, and Wildflower, as well as with D/460, Gold Band edge with hair line. In addition to the etched versions, the icer was, at that time, being engraved with no less than fifteen rock crystal patterns--Achilles, Adonis, Cordelia, Croesus, Deerfield, Glendale, Juliana, Larchmont, Laurel Wreath, Lexington, Lucia, Manor, Maryland, Roxbury and Tempo.

As the 1950s progressed, the #968 Cocktail Icer, in a way, was a barometer indicating the fortunes of the Cambridge Glass Company, with ever decreasing availability. By the time the final price list was issued in 1958, this icer was listed with only one rock crystal pattern, Tempo, and the three remaining major etchings--Rose Point, Chantilly, and Wildflower.

The #3600 2-pc. Cocktail Icer is basically the
continued on page 11



UNUSUAL SERVICE ACCESSORIES



969—2 pc. Cocktail Icer
(Pressed)



18—2 pc. Cocktail Icer



968—2 pc.
Cocktail Icer



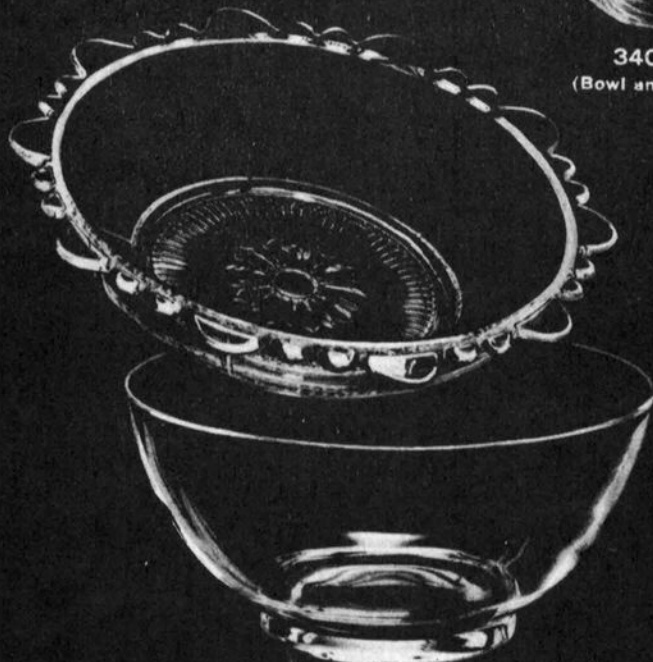
3600—2 pc. Cocktail Icer



187—2 pc.
Grape Fruit or Salad Icer



3400/41—3 pc. Frappe Set
(Bowl and one each 2 sizes of Tumblers)



188—2 pc.
Salad or Fruit Icer



68—Shrimp Cocktail
or Strawberry Service

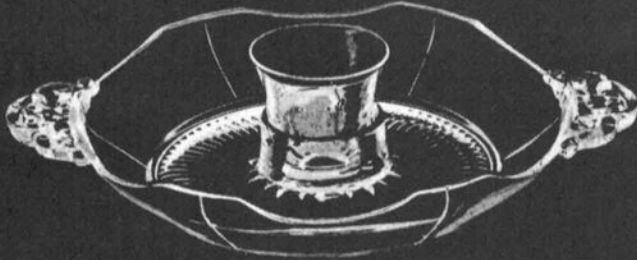


69—2 pc.
Shrimp Cocktail Icer

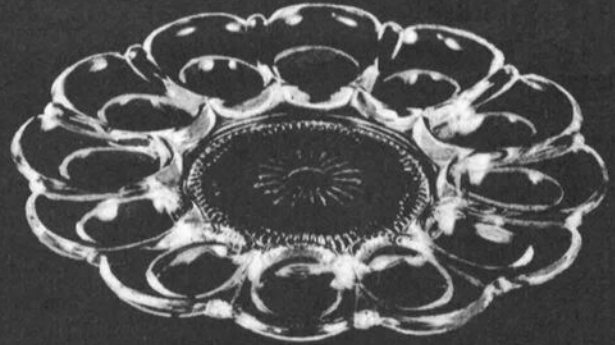
JANUARY 1, 1940



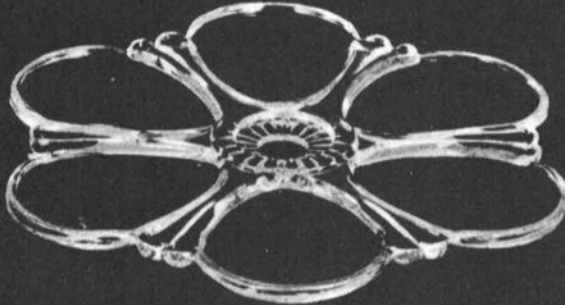
UNUSUAL SERVICE ACCESSORIES



155—2 pc. Shrimp Cocktail Icer



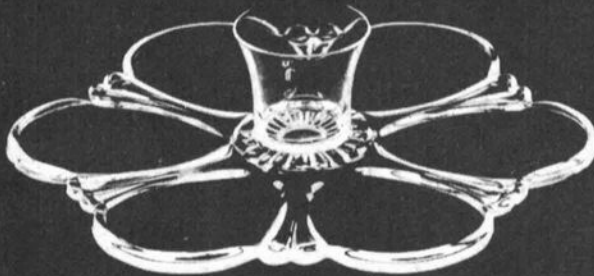
157 Deviled Egg Plate
Patent No. 112168



156 Oyster Plate
Patent No. 111504



160—9 in. Asparagus Tray



156/69 Oyster Plate & Sauce Cup
Patent No. 111504



163—8½ in. Asparagus Plate



155—4 pc. Oyster Service
(156 Oyster Plate and Sauce Cup)
(155 Ice Bowl)
(244 Service Plate)
Patent No. 111504



158 Artichoke Plate

JANUARY 1, 1940

UNUSUAL SERVICE.....continued from page 8

Pristine #18 without the Pristine foot and the regular Cambridge foot used in its place. The icer in no way resembles the balance of the #3600 stemware lines, even though it is shown with these lines. The #3600 stemware line dates to 1938 and no doubt the icer was conceived at about the same time. This icer was discontinued during the 1940s as it does not appear in the 1949 Cambridge catalog.

At its peak in popularity, the #3600 Icer was a part of the Blossom Time, Chantilly, Rose Point, Portia, Elaine, Diane, and Wildflower etched lines. The #3600 Icer will also be found with gold encrusted Blossom Time and Chantilly as well as both patterns with a Gold Edge.

The Pristine line, including the #18 Cocktail Icer and the #187 Grapefruit Icer, was introduced ca 1937. While the stemware remained in the Cambridge line until 1956, the icers were discontinued during the 1940s.

Pristine stemware, as a line, is rarely seen etched since very little was made. However, the Pristine #18 Cocktail Icer was listed in 1940 as being made etched Candlelight, Diane, Elaine, Portia, Rose Point, Wildflower, plain and gold encrusted except for the Wildflower icer which came only with a gold edge. Also available with a gold edge with the icers etched Elaine and Rose Point. This same icer was also sold with D/Astoria-gold band edge, D/1046, and D/1050-etched Laurel and gold encrusted.

The larger of the two icers, the Pristine Grapefruit or Salad Icer, #187, was also offered etched. Blossom Time, Chantilly, Diane, Elaine, Portia, Rose Point, and Wildflower etchings were being placed on this blank. D/1054, etched Laurel with a gold edge, will also be found on this icer. Note that the insert for this icer or for any of the others was never etched.

While it is known Pristine stemware was decorated with a number of rock crystal engravings, it has not been determined if the icers were ever so treated.

The remaining item on this page is the #188 2-pc. Salad or Fruit Icer. A service piece, the #188 2-pc. set is from the Martha Line and is made up of the Martha #188 11" Salad or Fruit bowl and a bowl from the Pristine line,

the #427 10" bowl. (How can this be, an 11" liner fitting into a 10" bowl? The Martha #188 bowl was measured from outside of rim to outside of rim with the actual "bowl" part being somewhat smaller.) Introduced in the late 1930s, the #188 Icers were dropped from the Cambridge catalog during the 1940s.

In its prime, the #188 Icer was available with seven etchings--Portia, Elaine, Diane, Rose Point, Wildflower, Blossom Time and Chantilly. If this item was ever gold decorated, it occurred prior to 1940 as no mention of such ware is found in the 1940 catalog.

All of the items on the second page of "Unusual Service Accessories" are from the Martha line, and for the most part were not made in color nor etched. The one known exception to the no color is the Asparagus plate which is known in forest green.

The Deviled Egg plate remained in the Cambridge line thru the final years of the reopen period while the Oyster plate was discontinued at the time the plant reopened in 1955. The other items were all discontinued prior to 1949.

The #156 Oyster plate was made with D/Astoria during the early 1940s. The sauce cup used with this item is the Pristine #69, while the underplate to the 4-pc. Oyster service is the 10½" Round line service plate.

..... to be continued

**VISIT YOUR MUSEUM
of
CAMBRIDGE GLASS**

HOURS:
Wednesday thru Sunday - 12:00 to 4:00 P.M.
Closed Monday & Tuesday
**Closed November, December, January
and February**

Museum Telephone Number – 614-432-4245

1986 AUCTION RESULTS

1. \$ 21.00	66. \$ 15.00	131. \$ 25.00	196. \$ 11.00	261. \$ 12.50	326. \$ 15.00
2. 10.00	67. 8.00	132. 54.00	197. 50.00	262. 15.00	327. 24.00
3. 16.00	68. 12.50	133. 195.00	198. 15.00	263. 3.00	328. 10.00
4. 6.00	69. 93.00	134. 30.00	199. 30.00	264. 12.50	329. 10.00
5. 20.00	70. 55.00	135. 25.00	200. 60.00	265. 10.00	330. 15.00
6. 8.00	71. 17.50*	136. 25.00	201. 15.00	266. 8.00	331. 10.00
7. 5.00	72. 27.50	137. 20.00	202. 15.00	267. 20.00	332. 25.00
8. 7.50	73. 35.00	138. 15.00	203. 30.00	268. 20.00	333. 15.00
9. 32.50	74. 70.00	139. 60.00	204. 15.00	269. 70.00	334. 3.00
10. 25.00	75. 30.00	140. 15.00	205. 34.00	270. 32.00	335. 4.00
11. 16.00	76. 30.00	141. 15.00	206. 55.00	271. 16.00	336. 4.00
12. 27.50*	77. 20.00	142. 25.00	207. 10.00	272. 1.00	337. 4.00
13. 50.00	78. 40.00	143. 60.00	208. 50.00	273. 75.00	338. 12.50
14. 35.00	79. 40.00	144. 55.00	209. 70.00*	274. 35.00	339. 5.00
15. 35.00	80. 45.00	145. 35.00	210. 25.00	275. 20.00	340. 50.00
16. 7.00	81. 20.00	146. 57.50	211. 40.00	276. 205.00	341. 40.00
17. 20.00	82. 35.00	147. 35.00	212. 60.00	277. 60.00	342. 20.00
18. 5.00	83. 22.50	148. 12.50	213. 200.00	278. 10.00	343. 2.00
19. 37.50	84. 80.00	149. 40.00	214. 400.00	279. 35.00	344. 5.00
20. 52.00	85. 17.50	150. 60.00	215. 50.00	280. 21.00	345. 4.00
21. 27.50	86. 35.00	151. 40.00	216. 20.00	281. 30.00	346. 12.50
22. 40.00	87. 35.00	152. 20.00	217. 67.50	282. 42.50	347. 20.00
23. 22.50	88. 35.00	153. 15.00	218. 135.00	283. 40.00*	348. 3.00
24. 32.50	89. 37.00	154. 30.00	219. 47.50	284. 30.00	349. 7.00*
25. 64.00	90. 17.50	155. 15.00	220. 40.00	285. 15.00	350. 5.00
26. 56.00*	91. 90.00	156. 20.00	221. 50.00	286. 15.00	351. 2.00
27. 15.00	92. 30.00	157. 62.50	222. 45.00	287. 3.00	140A. 22.50*
28. 27.50	93. 10.00	158. 12.00	223. 32.50	288. 30.00	
29. 35.00	94. 100.00	159. 22.00	224. 20.00	289. 22.50	
30. 21.00	95. 20.00	160. 37.50	225. 50.00	290. 15.00	=====
31. 30.00	96. 35.00	161. 17.50	226. 22.50	291. 25.00	CORRECTIONS and
32. 70.00	97. 60.00*	162. 45.00	227. 17.50	292. 35.00	ADDITIONS *
33. 25.00	98. 30.00	163. 25.00	228. 280.00	293. 22.50*	12. Etched
34. 27.50	99. 30.00	164. 22.00	229. 210.00	294. 17.50	Ch=ntilly
35. 55.00	100. 40.00	165. 14.00	230. 600.00	295. 80.00	
36. 20.00	101. 70.00	166. 12.50	231. 16.00	296. 100.00	26. 2 chipped
37. 50.00	102. 25.00	167. 15.00	232. 40.00	297. 25.00	instead of 1
38. 35.00	103. 30.00	168. 20.00	233. 25.00	298. 12.50	
39. 15.00	104. 40.00	169. 67.50	234. 185.00	299. 15.00	45. 3 instead of 1
40. 12.50	105. 36.00	170. 95.00	235. 195.00	300. 25.00	
41. 3.00	106. 15.00	171. 65.00	236. 22.50	301. 35.00	71. Stained
42. 10.00	107. 33.50	172. 17.50	237. 35.00	302. 4.00	
43. 7.00	108. 47.50	173. 36.00	238. 40.00	303. 27.50	97. #1573 instead
44. 13.00	109. 45.00	174. 50.00	239. 75.00	304. 10.00	of #1432
45. 21.00*	110. 30.00	175. 90.00	240. 55.00	305. 60.00	
46. 30.00	111. 170.00	176. 40.00	241. 20.00	306. 35.00*	140A. #3400 Carmen
47. 36.00	112. 150.00	177. 35.00	242. 25.00	307. 60.00	Cake Plate
48. 39.00	113. 40.00	178. 125.00	243. 20.00	308. 50.00	
49. 9.00	114. 135.00	179. 200.00	244. 55.00	309. 40.00	209. Child's size
50. 60.00	115. 100.00	180. 35.00	245. 70.00	310. 25.00	
51. 11.00	116. 15.00	181. 40.00	246. 340.00	311. 25.00	283. Chip inside
52. 10.00	117. 37.50	182. 40.00	247. 125.00	312. 25.00	top
53. 17.50	118. 50.00	183. 30.00	248. 25.00	313. 36.00	
54. 10.00	119. 20.00	184. 30.00	249. 20.00	314. 44.00	293. 1 cloudy
55. 30.00	120. 50.00	185. 50.00	250. 30.00	315. 75.00	
56. 66.00	121. 6.00	186. 80.00	251. 135.00	316. 35.00	306. Chip at base
57. 40.00	122. 10.00	187. 90.00	252. 85.00	317. 40.00	
58. 35.00	123. 15.00	188. 65.00	253. 220.00	318. 17.50	349. 5 in lot
59. 37.50	124. 30.00	189. 36.00	254. 35.00	319. 90.00	
60. 7.50	125. 9.00	190. 10.00	255. 90.00	320. 50.00	
61. 55.00	126. 15.00	191. 155.00	256. 30.00	321. 30.00	
62. 6.00	127. 55.00	192. 42.50	257. 25.00	322. 25.00	
63. 17.50	128. 20.00	193. 20.00	258. 435.00	323. 10.00	
64. 30.00	129. 35.00	194. 32.50	259. 42.50	324. 15.00	
65. 12.50	130. 70.00	195. 30.00	260. 5.00	325. 25.00	

STUDY CLUB NEWScontinued from page 4

The topic for Study this month was Cambridge decanters and stoppers. We used the CRYSTAL BALL as reference.

A treasurers report revealed that we were able to send the Cambridge Museum a donation of \$600 as a result of our Second all Glass Show & Sale.

Show & Tell items consisted of an amethyst #1070 36 oz. decanter; frosted 10" urn vase with silver overlay and iris flower decoration; a farber nude compote with Chantilly insert; a crown tuscan nude cocktail; gold krystal footed nut cup; and a moonlight blue two-kid flower holder.

We raffled off a luncheon service for two in pink Cambridge Round, etched #704. The lucky winner - Charles Weeks. Also raffled off was a year's subscription to the Daze - won by Palmer Bungler.

Next month will be devoted to crown tuscan.
submitted by Rita Berg

THOUGHTS continued from page 1


make plans for attending. I'll let Dave Rankin tell you about all of the goodies this year. (see Convention Preview on page 3)

Several of our dedicated members have suffered serious illnesses recently. Those I am aware of are: Jack Conners, KY; and Pauline Westfall, Don Warden and Gilbert Glasgow, all from OH. Perhaps we could include them in our prayers.

See you at "CONVENTION '86!".....WILLARD

— Classified —

BUYING: Caprice blue or Rosepoint by Cambridge. Rose or Orchid by Heisey. American, June, Fairfax, Versailles, Trojan by Fostoria. Also Depression Glass and all crystal or colored of that era. Nadine Pankow, 207 S. Oakwood, Willow Springs, IL 60480. 312/839-5231



THE
LONG
AWAITED

Cambridge Glass 1927-1929

66 Page Catalog Reprint
with Identification Guide
and Value Comparison

Showing many new items and lines.

Wetherford, Aero Optic,
early Decagon, early Cambridge
Round, new Stem lines, new Etchings,
new Figurals, and much more.

\$7.95

Please add \$1.00 P&H. Ohio residents add \$.48 Sales Tax

Bill and Phyllis Smith, CB
4003 Old Columbus Road
Springfield, Ohio 45502




**HAVE YOU
OBTAINED A
NEW MEMBER?**

If not PLEASE do so soon.

You'll feel good about it, and so will we!

THANKS

MOSTLY  HEISEY

RHODA CURLEY 518/482-6272
16 Clayton Place, Albany, NY 12209
UPS EXTRA

#156/69 Oyster Plates (12)
and Sauce Cups (9)..set \$ 20
ALL for.... \$ 200

These can be used as individual fruit
or relish plates -- Stickers on some.

OUR SHOP: "Worth a Trip From Anywhere!"

COLUMBUS ANTIQUE FLEA MARKET (ANTIQUES & COLLECTIBLES)

Ohio State Fairgrounds - Lausche Building
Off I-71 Exit 17th Avenue - Columbus, Ohio

APRIL 20th

Sunday Only - 7 A.M. to 4 P.M.
Show Admission \$1.00 - Under 12 Free
150 QUALITY DEALERS

SELLING: Advertising Art Deco, books, Cambridge, clocks, coins, collectibles, Depression glass, dolls, Fiesta, fine early furniture, Heisey, jewelry, lamps, oak furniture, post cards, pottery, good primitives, tools and print shop items.

STOCKWELL PROMOTIONS

4214 North High Street
Columbus, Ohio 43214
(614) 267-8163/263-6830/885-2352

NEXT SHOWS: May 11, June 29, September 7, October 12, November 9, and December 14

The DAZE

★ SPECIAL OFFER
to NCC friends
\$2. off the 1 year
subscription price,
when on this form
or copy of.

The Original, National monthly newspaper dedicated to the buying, selling & collecting of colored glassware and china including Depression Glass and the Elegant Glass (Cambridge, Heisey, Fostoria etc.) . We educate and inform you each month with feature articles by top notch columnists, readers "finds", club happenings, show news and a multitude of ads. Find those missing pieces to your 30s, 40s or 50s pattern. Can't identify it? Perhaps we can help. "Keep up with what's happening with a subscription to the DAZE. Buy, sell or trade from the convenience of your easy chair.

Name _____ Street _____

City _____ State _____ Zip _____

1 yr. - \$15.00 2 yrs. \$29.00 \$1.75 single current copy

Check enclosed MasterCard Visa

Exp. date _____ Card No. _____

Signature _____

Orders to D.G.D., Box 57NC, Otisville, MI 48463

Please allow 30 days for your first issue— Canadian subscribers, add \$1. per year and subscribe by charge card only! This Special Offer May Not Be Combined With Other Special Offers

STAGE COACH ANTIQUE MALL

(formerly White Pillars Antiques)

Doris & Roy Isaacs

7525 East Pike
Norwich, OH 43767

614/872-3720

MANY DEALERS. . .

PLENTY OF PARKING. . .

WIDE SELECTION OF GLASS
AND POTTERY
FURNITURE AND
GENERAL LINE!

BUY and SELL

OPEN YEAR ROUND

Weekdays - 10 AM - 5:30 PM

Sunday - 12 noon - 5:30 PM

Summer Evening Hours - by Chance!

Located 9 miles E. of Zanesville, OH, on I-70 to Norwich
Exit #164 - then 1/2 mile W. on Route 40.

NATIONAL CAMBRIDGE COLLECTORS

FLEA MARKET

SATURDAY, JUNE 28th

6 A.M. to 5 P.M.

DEALERS MUST REMAIN SET UP UNTIL 2 P.M.

GUERNSEY COUNTY FAIRGROUNDS

OLD WASHINGTON, OHIO

(one mile East of I-70, Exit #186, on Old U.S. 40)

DEALER SPACE AVAILABLE

For information or Contract write: Larry Hughes, Chrm., P.O. Box 416, Cambridge, OH 43725

NORMA J. WARDEN

3933 GROVELAND S.W., NAVARRE, OH 44662

Phone: 216/832-5851

FIGURE FLOWER HOLDERS

Rose Lady, 8½", pink satin (chip on base).....	\$160.00
Two-Kid, 8½", peachblo.....	180.00
Draped Lady, 8½", lt. green....	95.00
Sea Gull.....	40.00

MISCELLANEOUS

#3011 Nude Comport, cupped carmen.....	\$140.00
Flying Nude Bowl & pair #3011 Candlesticks, crown tuscan - set.....	400.00
Rubina, 8½" low Comport.....	110.00
Rubina, 10" petal edge Bowl & pr. 9" Candlesticks - set..	260.00
#1066 flat Cigarette Urn, cut Lucia.....	45.00
Swan, 4½", style III, signed, crystal.....	30.00
Sherry Decanter, emerald.....	30.00

Decanter, 12 oz. (no stopper), & 4 mushroom Cordials, amethyst.....	\$ 30.00
#300 Caprice Cordials (2) ea...	22.00
#1356, 7", 2-lite Candelabra...	65.00
Community Child's Table Set, 4 pieces.....	95.00
Ebony tall Comport, sterling silver overlay - marked "sterling" 8 places.....	50.00
Tall Comport, moonlight blue, etched #731.....	37.50

ROSEPOINT

#3400 Cheese Comport.....	\$ 35.00
#3121 Goblets (2) ea.....	22.00
#3121 ftd. Ice Tea (2) ea.....	25.00
#3121 Cocktails (4) ea.....	28.00
#274 10" Bud Vase, gold encr...	50.00
#6004, 6", ftd. Flower Holder..	25.00
Mustard (no lid).....	40.00

POSTAGE and INSURANCE EXTRA!

LYNN WELKER

2 EAST MAIN STREET, NEW CONCORD, OH 43762
Phone: 614/826-7414 or 614/826-4418

CAPRICE

#300 Tall Sherbets (7).....	\$ 10
#17 Cups & Saucers (7).....	10
#96 Salt & Pepper (pr.).....	14
#103 12" Celery, handled.....	40
#180 5 oz. Tumblers (2).....	14

CAPRICE, Moonlight

#2 Tall Sherbets (6).....	\$ 22
#11 5 oz. ftd. Tumblers (6).....	24
#300 10 oz. ftd. " , Alpine (5)..	22
#17 Cups & Saucers (3).....	30
#184 12 oz. Tumblers (7).....	30
#62 12½" Belled Bowl, 4 ftd.....	45
#41 Large Sugar & Cream (pr.).....	35
#212 3½" Coaster (2).....	20
#40 Ind. Sugar & Cream.....	30

CHANTILLY

#3600 Clarets (2).....	\$ 25
#3600 Cordials (3).....	40

DIANE

#3122 Goblets (3).....	\$ 18
#3122 10 oz. ftd. Tumblers (2)....	15
#3122 5 oz. ftd. Tumblers (3).....	15

GLORIA, Gold Krystol

#3035 2½ oz. Wines.....	\$ 27
-------------------------	-------

ROSEPOINT

#3121 6 oz. Low Sherbets (8).....	\$ 15
#3121 10 oz. Goblets (8).....	22
#3121 6 oz. Tall Sherbets (8).....	20
#3121 3 oz. Cocktails (6).....	25
#3121 3½ oz. Wines (6).....	40
#3121 1 oz. Cordials (8).....	47
#3121 5 oz. ftd. Tumblers (8).....	25
Pristine Butter Tub & Cover.....	140
#151 Mustard & Cover.....	100
#3400 Master Nut Dish, 4 ftd.....	65
#3900/100 6 oz. Oil & Stopper.....	85
#3400/38 12 oz. Tumblers (5).....	30
#628 Cambridge Arms base.....	30
#3400/851 Ice Bucket, hdl.,tongs..	100
Bobeches for Candelabras (4) and	
60 other Rosepoint pieces	

FIGURALS

Crystal Buddha.....	\$125
#1 Butterfly, satin finish.....	35
Draped Lady, 8½", mandarin gold...	175
Ram's Head cov'd. Candy, cut.....	60

#3011 NUDE STEMWARE

Claret, forest green.....	\$ 80
Cocktails, amber, f.grn., ameth...	70
Claret, royal blue.....	110
Wine, royal blue.....	150
Wine, carmen.....	175
Comports, amber, forest green.....	125
Brandies, amber, forest green.....	75
Champagne, amethyst.....	100
Goblet, amethyst.....	100
15 other Nude Stems	

SWANS

Style II, 3½", gold krystol.....	\$ 35
Style III, 3½", crown tuscan.....	25
Style II, 3½", lt. emerald.....	30
Style III, 3½", carmen.....	75
10 other Swans	

MISCELLANEOUS

#55 M. Washington Stein, f. grn...\$	20
#163 Asparagus Plates (2).....	15
W126 Everglade Vase, milk glass...	35
W88 Cascade Candlesticks, m.glass.	45
#1263 Ivy Ball, amethyst.....	32
Georgian Basket, peachblo, gold...	45
#3122 Low Sherbets, carmen (4)....	14
#43 M.Washington 3-compt. cov'd.	
Candy, carmen.....	60
30 other Carmen pieces	
#3400 Salt/Pepper, topaz, rare ...	35
#1382 Decanter, royal blue.....	45
#3130 Bell, cut Manor, orig.....	40
20 Cigarette Urns w/Ashtray foot	
20 other Smoker's items	
Bobeches for Candelabras, arms	

NEARCUT

Buzz Saw Basket.....	\$ 35
Daisy Cruet.....	40
Daisy Decanter, Basket, Salt/Pepper	

POSTAGE EXTRA -- EXCESS REFUNDED!

CAMBRIDGE MISCELLANEOUS: #3725 Water Goblets, cut Star (12).....	\$ 12.00
Sea Shell Nude stem Comport, 7½", crown tuscan.....	145.00
#1563 4-lite Candle Arm (2).....	8.00
#1536 Peg Nappy (2).....	6.00
#1633 Peg Vases, 5½" (2).....	9.00
#604 5" Coasters (7).....	3.00
#1136 Heron Flower Holder, 9".....	50.00
#1 Keg Tumblers, 2", cobalt blue (4).....	12.00
Plates, 8", pink, Laurel Wreath (12).....	5.00
#993 Console Bowl, 12", 4 ftd., w/Maryland cutting & original Label.....	35.00
Mt. Vernon, ftd. Sugar, gold krystol.....	12.00
Novelty Plate shaped Basket, moonlight blue.....	22.00
Star Candlesticks, 2" pair and 4" pair.....(each pair).....	18.00
#1238 Keyhole Vase, 12", amethyst.....	25.00
#3500 Candleholders, 2", amethyst (pair).....	22.00
#1124 Pouter Pigeon Bookend, frosted.....	60.00
#1675 Eagle hdd. 3-part relish, 8".....	65.00
#518 Draped Lady Flower Holder.....	55.00
#1138 Sea Gull Flower Holder.....	45.00
#119 Basket, ebony, 11".....	75.00
CAPRICE: Cup and Saucer Sets (11).....	10.00
Sugar and Cream, 3", moonlight blue, pair.....	22.00
CHANTILLY: Cigarette Holders, ruffled, Sterling base (2).....	18.00
Wine Goblets in Farber holders (6).....	12.00
DIANE: #1307 3-lite Candlestick, 5".....	28.00
#3900/72 2-lite Candlestick, 6".....	28.00
#3400/68 Sugar, 3".....	15.00
#3500 5½" Comports (2).....	23.00
#3122 9 oz. ftd. Tumblers (2).....	14.00
#3400/36 Shaker, no top.....	12.00
#3500/15 Individual Creamer.....	12.00
ELAINE: #3500 2½ oz. Wine Goblets (2).....	8.00
#3500 Water Goblet w/gold trim.....	18.00
#3500 Tall Sherbet Goblet w/gold trim.....	14.00
CAMBRIDGE IN FARBER HOLDERS: Amber Compote, 7".....	18.00
Amethyst Bowl Nude Compote.....	30.00
Cocktail, 3 oz. Goblet, green (2).....	6.00
Cocktail, 3 oz. Goblet, smoke (2).....	6.00
ROSEPOINT: #1312 Sugar.....	18.00
#3500 Goblets, tall Sherbet (4).....	22.00
Cheese & Cracker set, 11½".....	90.00
#3500 10 oz. Water Goblets (7).....	24.00
#3900/111 divided Mayonnaise.....	38.00
#1532 Mayonnaise, 3-pc. set, gold trim.....	38.00
#3900/166 14" Plate.....	45.00
#3500 10 oz. ftd. Tumblers, gold trim (4).....	18.00
#3500 7 oz. low Sherbets, gold trim (11).....	16.00
#3500 4½ oz. Oyster Cocktail, gold trim (8).....	18.00

CRYSTAL UNLESS NOTED -- PRICED EACH -- ALL PIECES MINT -- U.P.S. \$3 MINIMUM

DANIEL FORTNEY -- NO.713

CHALET AT THE RIVER -- 823 N. 2ND STREET
MILWAUKEE, WI 53203 PHONE: 414/224-1089

– SAN FRANCISCO –
WELCOME TO
THE “ALL STAR SHOW”
Sat. & Sun. APRIL 12th & 13th
10 a.m. - 5 p.m.

Admission \$2.50 - \$2.00 with this ad
At the “Hall Of Flowers”
(9th Ave. & Lincoln Way)

☆ Glass Repair ☆ Door Prizes Every Hour

THE “STARS” FROM FAR & WIDE

- | | |
|---------------------------|---------------------|
| ★ ★ Deer Trail Antiques | ★ ★ Mark Schliesman |
| ★ ★ Nadine Pankow | ★ ★ Rusty Melin |
| ★ ★ Glen & Louise Everett | ★ ★ Sandi Boon |

THE STARS FROM CALIFORNIA

- | | |
|-----------------------|--------------------------------------|
| ★ R & L Antiques | ★ Beverly Forrester |
| ★ Sharon Taylor | ★ Mel Riffeel |
| ★ Davis Lusty | ★ Miracle Glass Repair |
| ★ Colectimania | ★ Deborah Basile |
| ★ Naomi’s Antiques | ★ Washburn Antiques |
| ★ Virginia Anderson | ★ Joan Hartman |
| ★ Robert Bettinger | ★ Marson Co Antiques |
| ★ Robert Pries | ★ John & Robert Parr |
| ★ Ann Anderson | ★ Agnes Allison |
| ★ Glass Rainbow of CA | ★ Jewels Glass &
Ferns Glass Room |
| ★ Virginia Roueche | ★ Dishes Delmar |
| ★ Karma Vullo | ★ Patricia Disalvo |

*Just The Best In The West “Depression Era”
Glass, Pottery & China Show & Sale*

An ‘UP TO PARR’ Promotion
588 Guerrero St., S. F., CA 94110
(415) 552-0690

DEALERS



DIRECTORY

NOTE: When writing to the Dealers listed here, please enclose a SASE!

<p>EVELYN M. ALLEN 135 Cynthia Street Heath, Ohio 43055 Mail Order & Shows 614-522-1635 SPECIALIZING IN CAMBRIDGE GLASS!</p>	<p>BENICIA ANTIQUE SHOP 305 First Street Benicia, California 94510 OPEN 11 AM - 5 PM Closed Monday Z. E. LOPES 707-745-0978</p>	<p>CHARLES MIKULIK Box 416 Elizabeth, N.J. 07207 — COLLECTOR — Always paying good prices for CAMBRIDGE CAPRICE in all colors 201-688-1144 CARRY MOST TYPES OF ANTIQUES</p>
<p>ANDREJCAK'S ANTIQUES 14533 Bayes Ave. Lakewood, Ohio 44107 Joe & Karen Andrejcek 216-226-3417 SHOWS ONLY — CAMBRIDGE — FENTON — CHINA</p>	<p>VISIT HISTORIC BENICIA and its 28 shops Off Interstate #80 North of San Francisco</p>	
<p>BOGART'S ANTIQUES (two locations) 111 W. Main St., New Concord, OH 43762 and Stagecoach Mall, Norwich, OH, Bldg.No. 2 Jack & Sharon Bogart 614/826-7439 and 614/872-3514 BUY SELL APPRAISE REFINISH SEAT WEAVING CLOCK REPAIR COPPER & BRASS POLISHING GENERAL LINE - CAMBRIDGE GLASS</p>	<p>RICHARD BENNETT 64183 Warne Drive, Cambridge, OH 43725 Phone: 614 / 432-4483 SPECIALIZING IN CAMBRIDGE GLASS Stagecoach Mall - Bldg. 3 - Norwich, OH</p>	<p>BERKELEY ANTIQUES 69 Berkeley St. Boston, MA 02116 George or Frank 617-426-1048 CAMBRIDGE, HEISEY, GENERAL LINE</p>
<p>THE GLASS CUPBOARD 39 Shire Oaks Drive Pittsford, New York 14534 Marcia Ellis Cambridge, Duncan Miller (716) 586-7596 Shows, Mail Order, Appt.</p>	<p>D & D ANTIQUES Columbus, Ohio DICK SLIFKO SHOWS ONLY</p>	<p>THE GLASS MENAGERIE 322 Market Street: Suite 101 Denton, Maryland 21629 Barbara & Bill Danels 301/822-8794 SPECIALIZING IN GLASSWARE OF THE DEPRESSION ERA</p>
<p>PEG AND DALE GOTSCHALL Antiques, Cambridge and Other Quality Glass 833 N. 6th St., Cambridge, Ohio 43725 Phone 614/432-5529 Stagecoach Mall — Bldg. 2 — Norwich, Ohio</p>	<p>JUDY'S ANTIQUES Judy Bennett 422 S. Ninth Street (Corner of Jefferson) Cambridge, Ohio 43725 BUYING Ph. 614-432-5855 SELLING <i>Cambridge Glass my Specialty</i></p>	<p>"Happiness Is" - The Stultzs 3106 Warren Court, Glen Allen, VA 23060 Shows and Mail (Richmond Area) 804/262-1273 GLASS CIRCA 1890-1960</p>
<p>THE HITCHING POST 7467 S. R. 88 Ravenna, OH 44266 Ph. 216-296-3686 D. McDaniel CAMBRIDGE — HEISEY — GENERAL LINE</p>	<p>GREEN ACRES FARM 2678 Hazelton Etna Rd., Pataskala, OH 43062 (State Route 310 North) Sat. & Sun. 1-7 PM 614/927-1882 Antiques, Crystal Glass and Collectibles</p>	<p>MOSTLY HEISEY 16 Clayton Place, Albany, NY 12209 Rhoda Curley 518 / 482-6272 SHOP and MAIL ORDER</p>
<p>L & M ANTIQUES 1331 S.E. 4th Ave., Pompano Beach, FL 33060 Lydia & Cliff McNeil 305/943-2274 CAMBRIDGE & FOSTORIA OUR SPECIALTY Buy & Sell Shows Only</p>	<p>TASTE OF HONEY <i>Glassware - Collectibles</i> Clarke & Carole West 3433 Turner Drive Springfield, Ohio 45504 SHOWS ONLY</p>	<p>1886 HOUSE East Schodack, N.Y. 12063 MAIL and SHOWS Laurie Cruise 518-477-5895 CAMBRIDGE - NORITAKE - AZALEA - D.G.</p>
<p>THE GLASS URN 456 West Main Street, Suite G. Mesa, AZ 85201 602 / 833-2702 Mail Order Shows Open Shop CAMBRIDGE, FOSTORIA, HEISEY, ETC.</p>	<p>SHIRLEY S. LADOUCEUR Antiques and Collectibles Specializing in Cambridge Glass BY APPOINTMENT 7597 Daphne Drive 315-458-5297 No. Syracuse, NY 13212</p>	<p>MARGARET LANE ANTIQUES 2 E. Main St., New Concord, OH 43762 Lynn Welker 614/826-4418 CAMBRIDGE GLASS MATCHING SERVICE Hours Mon.-Fri. 1-5 PM or by Appointment</p>
	<p>AL STEELE Westerville, Ohio 614-882-6483 or 614-882-7124 Mail Orders and Shows Only HEISEY — CAMBRIDGE — PATTERN GLASS</p>	<p>SKYLINE DRIVE ANTIQUES 5432 Skyline Drive, Cambridge, OH 43725 Drew & Donna Davis 614 / 432-2621 SPECIALIZING IN CAMBRIDGE GLASS! Shows Mail Order Matching Service</p>



National Cambridge Collectors, Inc.

P. O. Box 416, Cambridge, Ohio 43725

The National Cambridge Collectors, Inc. is proud to present an original film produced by the Cambridge Glass Co. in the 1950's. The film is entitled THE CRYSTAL LADY. It is a most interesting film and includes pictures of the factory and the workers making the fine Cambridge Glass. It is a 16mm sound movie that runs about 40 minutes.

The following 5 slide presentations are now available:

No. 1 is on the Display rooms and close-up shots of particular pieces of interest.

No. 2 is of different stems made by Cambridge Glass Co.

No. 3 covers Cambridge Glass candlesticks.

No. 4 is of Cambridge colors.

No. 5 presents Cambridge Glass figurals.

These 5 presentations are available in Kodak carousel slide trays and are supplied with narratives on each slide.

NOTE: NCC Study Clubs may use these presentations free of charge except for postage to and from destination.

TO RESERVE PLEASE CHECK THE ITEM (OR ITEMS) DESIRED.

MAKE CHECK PAYABLE TO: NATIONAL CAMBRIDGE COLLECTORS, INC.

THE CRYSTAL LADY and all 5 slide presentations have a deposit fee of \$25 and a rental fee of \$15 which will be deducted from the deposit fee.

THE CRYSTAL LADY

No. 1 Display rooms and particular pieces

No. 2 Stems

No. 3 Candlesticks

No. 4 Colors

No. 5 Figurals

TOTAL DEPOSIT FEE:

NAME OF ORGANIZATION:

ADDRESS:

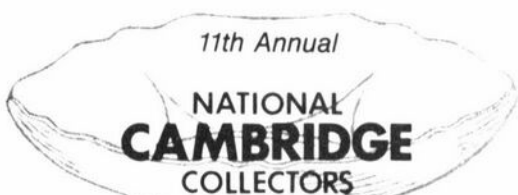
CITY & STATE: ZIP

DATE NEEDED:

National Cambridge Collectors, Inc.
P. O. Box 416 Cambridge, Ohio 43725

FIRST-CLASS MAIL
U.S. POSTAGE
PAID
So. Vienna, Ohio
45369
Permit No. 15

FIRST CLASS MAIL



11th Annual

NATIONAL
CAMBRIDGE
COLLECTORS

ANTIQUÉ SHOW & SALE

(& 13th Annual NCC Convention)

SHENANDOAH INN

INTERSTATE 70 · EXIT 186 · 7 MILES EAST OF
CAMBRIDGE, OHIO

JUNE 27, 28, 29, 1986

HOURS	
FRIDAY, JUNE 27th	6:00 - 9:00
(PREVIEW ADMISSION \$3.50)	
SATURDAY, JUNE 28th	11:00 - 6:00
SUNDAY, JUNE 29th	12:00 - 5:00
(ADMISSION \$2.00)	

OFFERING CAMBRIDGE AND OTHER FINE GLASSWARE
ALONG WITH A GENERAL LINE OF ANTIQUES

FOOD DOOR PRIZES PARKING



APRIL 1986