



Cambridge Crystal Ball

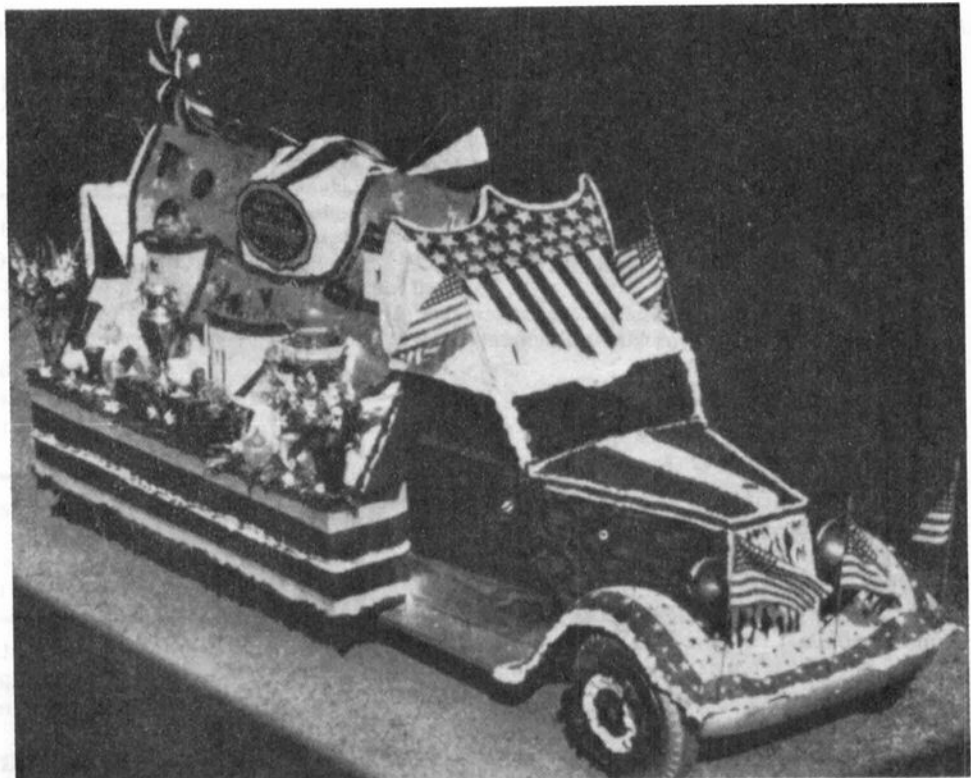
Published monthly by the National Cambridge Collectors, Inc.
to encourage and report the discovery of the elegant and boundless product
of the Cambridge Glass Company of Cambridge, Ohio

Issue No. 161

September 1986

CAMBRIDGE GLASS COMPANY took a prominent part in the Labor Day celebration at Cambridge, Ohio, home of the glass concern. The affair was sponsored by the Trades Labor Assembly, of which the Cambridge workers are members.

One of the features of the parade was a float entered by Cambridge Glass. It was decorated with glass, vases and stemware, wired on. Flatware pieces were drilled and screwed on the float. Large vases filled with gladioli were placed at the four corners and fresh flowers were attached to the ledges.



CAMBRIDGE GLASS FLOAT Attracts Many In Labor Day Parade

The silver loving cup seen in the picture was given the company by the sales organization on the twenty-fifth anniversary of the organization. No prizes were awarded but glass company officials stated it was the consensus on the street and at City Park where the float was displayed for the day, that it was outstanding in the parade.

The float was taken from the park in the late afternoon and placed in front of a theater on the main street of the town, which is on Route 40, east to west. It drew throngs of persons, including many tourists, causing numerous traffic jams.

The appearance of the float was so unusual that many persons passing through stopped their cars and took photographs of it. Flashlights were numerous and the picture taking continued until 10 o'clock at night when the float was removed. (Reprinted from the American Glass Review, Sept. 28, 1946.)

Membership Renewal Notice

This is your **last** issue of the *Crystal Ball*—if the date on your address label reads **9-86**.
Please renew now!

CAMBRIDGE CRYSTAL BALL

Official publication of National Cambridge Collectors, Inc., a non-profit corporation with tax exempt status. Published once a month for the benefit of its members.

Membership is available for individual members at \$13 per year and additional members (12 years of age and residing in the household) at \$3 each. All members have voting rights, but only one *Crystal Ball* will be mailed per household.

Back issues of the *Crystal Ball* are available (beginning with Issue No. 1, May 1973) for members only. Cost \$.60 each or 12 issues for \$7.

1986-87 OFFICERS & COMMITTEE CHAIRPERSONS

PRESIDENT.....	Willard P. Kolb
VICE-PRESIDENT.....	Mark A. Nye
SECRETARY.....	Janice Y. Hughes
TREASURER.....	William C. Smith
SERGEANT-AT-ARMS.....	Marybelle Moorehead
BUDGET & FINANCE.....	David B. Rankin
BY-LAWS.....	Ekkehart A. Vimmer
CONVENTION.....	Mark A. Nye
MEMBERSHIP.....	Phyllis D. Smith
MUSEUM.....	Billy F. Harbaugh
PROGRAM & ENTERTAINMENT.....	Marlene K. Snyder
PROJECT.....	Willard P. Kolb
PUBLIC RELATIONS.....	William C. & Phyllis D. Smith
PUBLICITY.....	Joseph Andrejcek
STUDY GROUP ADVISOR.....	Phyllis D. Smith
1987 AUCTION.....	Lynn M. Welker
1987 ANTIQUE SHOW.....	Joy R. McFadden
1987 FLEA MARKET.....	Larry F. Hughes
CRYSTAL BALL EDITOR.....	Phyllis D. Smith

CLASSIFIED ADVERTISING RATES

5c per word \$1.00 minimum
We cannot mix type size in classified advertisements. Abbreviations and initials will count as words. Payment in full MUST accompany all ads.

DISPLAY ADVERTISING RATES

(camera ready ads preferred)

	Members	Non-Members
1 8 page (9 items)	\$4.00	\$6.00
1 4 Page (20 items)	7.00	10.00
1/2 page (20 items)	12.00	18.00
3/4 page	17.00	25.00
Full page (50 items)	22.00	33.00

DEALERS DIRECTORY

5 line maximum \$12.00 for 12 months
Cambridge *Crystal Ball* assumes no responsibility for items advertised and will not be responsible for error in price, description or other information.

Advertising copy, articles, club news and notices must be in our hands by the 10th of each month to assure publication in our next issue. Paid advertisements containing reproductions or new glass will not knowingly be accepted for publication.

Opinions or information stated in any signed article or letter printed in the *Crystal Ball* are those of the authors and may or may not agree with National Cambridge Collectors, Inc. The Editor reserves the right to refuse and to edit any material submitted for publication so as to conform with the editorial style of the *Crystal Ball*.

PLEASE ADDRESS ALL CORRESPONDENCE TO

National Cambridge Collectors, Inc.
P.O. Box 416 Cambridge, Ohio 43725

PRESIDENT: Willard Kolb 614/695-0695
SECRETARY: Janice Hughes 614/432-7823
EDITOR: Phyllis Smith 513/323-3888

NCC MUSEUM of Cambridge Glass is located on U.S. Route 40, 1/8 mile east of I-77 near Cambridge. Hours: 12 noon to 4 PM - Wednesday thru Sunday. (March thru October)

PLEASE NOTIFY US IMMEDIATELY OF ANY CHANGE IN YOUR ADDRESS

Please enclose a SASE when requesting information

CAMBRIDGE GLASS BOOKS FOR SALE

by National Cambridge Collectors, Inc.

* **COLORS IN CAMBRIDGE GLASS**
(128 pages - 60 color plates - fully indexed)
Hardbound with Price Guide \$19.95

* **1930-34 CAMBRIDGE GLASS CO. CATALOG REPRINT**
(250 page reprint of original catalog)
Hardbound with Price Guide \$14.95

* **1949-53 CAMBRIDGE GLASS CO. CATALOG REPRINT**
(300 page reprint of original catalog)
Hardbound with Price Guide \$14.95

* **1956-58 CAMBRIDGE GLASS CO. CATALOG REPRINT**
(164 page reprint of original catalog)
Paperback \$6.95

1985 COMBINED PRICE GUIDE
for 1930-34 & 1949-53 catalog reprints Postpaid \$5.75

*NCC MEMBERS ONLY: *These publications are available at 10% discount - or all four (4) at one time for \$50.00.*

by Bill & Phyllis Smith

CAMBRIDGE GLASS 1927-1929
(66 page reprint of original catalog)
Paperback with Identification Guide \$7.95

by Mark Nye

CAMBRIDGE STEMWARE
(95 Stemware lines with 107 illustrations)
Paperback \$14.95

by Cambridge Buffs Study Group

NEARCUT
(108 page reprint of 1910 Cambridge Catalog)
Paperback with Price Guide \$9.95

by Mary, Lyle and Lynn Welker

CAMBRIDGE GLASS CO.
(120 pages of reprint from 8 old catalogs)
Paperback \$6.95

CAMBRIDGE GLASS CO. BOOK II
(119 pages of reprint from old catalogs)
Paperback \$6.95

CAMBRIDGE, OHIO GLASS IN COLOR II
Spiralbound \$5.95

by Harold and Judy Bennett

1903 CAMBRIDGE GLASS CO. CATALOG REPRINT
(106 page reprint of an original catalog)
Paperback \$7.50

Address your orders to:

BOOKS
National Cambridge Collectors, Inc.
P.O. Box 416
Cambridge, OH 43725

Please add \$1.00 (P & I) per order.
(Not required for Price Guide)
Ohio residents please add 6% state sales tax.

DEALER DISCOUNTS AVAILABLE - PLEASE WRITE!

THOUGHTS from your President . . .

Election is over and you will just have to put up with me as your President, for another year. I thought I could wiggle my way out of it this year, but I just wasn't quick enough on the draw. We do have a new Vice-President, Mark Nye, who will also be your Convention Chairman next year. Janice Hughes and Bill Smith were also slow "on the draw" and were reelected to Secretary and Treasurer, respectively. All of the chairpersons agreed, under duress, to serve for another year. There will be a few new chairpersons listed to fill the vacancies left by Dave Rankin and Frank Wollenhaupt.

Other than the election of officers, most of the discussion at the Board of Directors meeting centered around our financial status at present and where next year's Convention and Show will be held.

As for our financial status, per the recommendations of the Budget and Finance Committee, we should not make any great expenditures this year. Our Museum operating costs are not being offset by admissions and sales and thus the Museum Fund is dwindling. It was decided that we should spend most of this year utilizing work parties to get all of the molds and other equipment cleaned and inventoried; and the listing of these items and numerous other information into the computer.

As it stands right now, the Convention will again be at the Shenandoah Inn. Much discussion was held concerning possible problems at Salt Fork with holding the Show there. Also, it was felt that the room costs would be prohibitive for a lot of people and if they chose to stay in Cambridge, the driving time to Salt Fork would be too long.

Prior to the Directors meeting David Rankin held a training session on the use of the computer. Now everyone, including Dave, says how easy they are to use and I believe them, but frankly, Janice and I (who will be using it considerably) are scared to death of it! I mean you can't even lie to it, it talks back and tells you you're wrong. My wife doesn't even do that. Dave tells us to just sit down and practice on it, we can't hurt it. Wanna bet? Anyway, Janice and I are determined we are going to hold some training sessions for ourselves and learn how to use it. We like what that darn machine can do. When you start getting your "thank you" letters for donations, you'll know that I have found the right button

to push to have the computer printer write your letter!

One other thing that I want to mention. Any of you dealers who are buying club books for resale can buy them through the Club for the same discount that any of the book suppliers will give you. (Please write for additional information.) This would give us a little added income on the books and we would certainly appreciate it.

On a sad note, I am sure you will join with me in extending our deepest sympathy to the families of Gilbert Glasgow, Mark Schliesmann and Don Warden. All three men passed away during the past few weeks. They will be sadly missed by all of us.

WILLARD

IN MEMORIAM

"No one hears the door that opens
When we pass beyond the call;
Soft as loosened leaves of roses
One by one our loved ones fall.
From our chain these links have fallen,
In our land their stars have set,
But enshrined on memory's tablet,
Their true worth we'll ne'er forget."

GILBERT GLASGOW

St. Clairsville, Ohio

Gib, as you will remember, was in charge of the molds at Imperial during the liquidation and made a tremendous effort to see that we got all that we did. He wasn't a member of N.C.C. very long, but he certainly made a tremendous contribution in that short period of time.

MARK SCHLIESMANN

Racine, Wisconsin

Mark authored several books on glass, and was proud of the fact that he held membership and was active in all of the National Glass Clubs, including N.C.C. He and his wife Jo Ann were dealers in our Show during Convention.

DONALD WARDEN

Navarre, Ohio

Don and his wife Norma have been active members of N.C.C. for many years. They were missed by many of us this year during Convention, but Don was just too ill to attend.

New in Cambridge Showrooms

by MARK A. NYE

My talk at the convention in June covered this same subject with an emphasis on etchings and, out of necessity, the items chosen for inclusion, for the most part, were rather brief. The following two selections, taken from trade journals dating to the spring and summer of 1925, not only describe what was then new from the Cambridge factory, but also to a lesser degree cover the increasing popularity of glass dinnerware and other items for the home.

I think we tend to forget that glass dinnerware was not always the vogue and probably has never really achieved the same position held by china. Beginning in the mid 1920s, however, glass dinnerware did rise to new heights in popularity and Cambridge Glass Co. was innovative in adapting to this new demand for dinnerware in not only clear glass (crystal), but also in color, plain and decorated. What they were doing in 1925 to meet the buying public's wishes is clearly described below.

This first article is taken from a column printed in the August 3, 1925 issue of China, Glass and Lamps, entitled "New York Trade Notes" written by Jane Littell.

"An unusual number of lovely new things have arrived at the showrooms of the Cambridge Glass Co., at 184 Fifth Avenue, since my last visit. The most important is a new color in glass known as Peachblo. It is made up in stemware and in footed and straight sided tumblers, in wide optic, and may be had either undecorated, or with an encrusted band and line treatment.

The color is absolutely unique in modern glass. It has the warmth and sparkle of amber, and the gayety of the DuBarry rose, and is different from these, while combining the charms of both. The name -- Peachblo -- describes it perfectly.

Mr. Graham tells me that he will soon have samples of ice tea sets, water sets, vanity sets, salad sets, etc., in this lovely new color. Of course, launching a

new color is a serious matter, but I don't see how this concern can avoid making their full line of fancy ware in the new Peachblo.

The stemware is made on their 305 (NOTE: this 305 number is undoubtedly a misprint as we can find no record of a #305 stem line -- #3051; 3065; 3075; 3085, etc., yes, but not 305.) shape, which is tall, slender and slightly cupped, and they have the same shape in amber, amethyst, green and crystal, as well as the new peachblo.

The other two new lines are of equal importance. One is a full table service, with the exception of vegetable dishes, of undecorated colored glass. A table is set with this line in amber, and it rates a lot of adjectives. There are service plates, salad plates, bread and butter plates, dessert plates, soup plates, grape fruits, sugars and creams, cold meat platters, cups and saucers and stemware -- all matching. Shown against a background of white, the effect is charming. For hot weather use, for tea, for luncheon, this service of glass is a novelty that ought to appeal rather widely to women who like to have unusual services for special occasions. It will never, of course, displace the elaborate china for formal occasions, nor is it intended to, but it has its use and charm all its own.

The third new line consists of deep plate etchings on stemware, plates and fancy ware, which may be had with a gold hairline and drop, or with no decoration but the etching. There are two patterns shown, one an inch and a quarter band in lacy scroll work, with an etched medallion in the center of each piece, and the other also a lacy pendant pattern, wider than the band and with more contrast between the etched and the plain sections of the pattern. The effect of an etching on colored glass -- it is made in amber and green -- is unusually airy and dainty."

Our second and last selection is an article headlined "New Designs in Glassware Shown by Cambridge Glass Co." taken from Crockery and Glass Journal and first published May 14, 1925.

"The modern vogue for table glassware has become so firmly established

that manufacturers of this commodity, in order to meet the never-ceasing demand for "something new" are constantly working out some novel adaptation of glassware for table use. In fact it is now possible to equip the table almost completely in glassware.

The Cambridge Glass Co., Cambridge, O. have done some splendid work in creating and adapting glassware for practically every table use, as well as for boudoir and other special purposes. Shown at the New York office of this concern at 184 Fifth Avenue are many new and interesting samples.

One of their newest items is a cocktail set, in crystal, amber glow, or green, consisting of six footed, fluted glasses with footed shaker with sterling silver top. A new console set introduces a pair of dolphin candlesticks combined with a tall rose jar in plain or twisted optic, in four colors, green, amber glow, blue or mulberry, the jar having black cover and stand. They are gracefully modeled and combine charmingly to make an interesting piece of decoration.

A thirty-three piece luncheon set will make a wonderful summer number, coming as it does, in amber glow, green or mulberry, all colors especially suited for porch and cottage use. The set consists of cups and saucers in two styles, sugar and cream, baked apple dishes, salad and bread and butter plates and a large plate for sandwich or bread.

For purely decorative purposes there are flower baskets and tall and slender vases, footed, in three sizes, and in green, mulberry and amber glow, some with encrusted gold decorations, new round and oval shapes in mayonnaise sets in amber glow and gold, some with gold encrustations in heavy band with rich design broken by open work medallions. Sugars and creamers on a tray come with the same decorations as do, service plates, salad and bread and butter plates.

The "Classic" design appearing in gold on some of the slender vases, has an open work panel running down the length of the vase and alternating with short festoon motif.

For the dressing table there comes a charming set consisting of two graceful perfume bottles with drip stoppers and a large powder box. These come in four decorations and three colors, blue, green and amber glow. One in a satin finish, solid color has an etched design. The others are decorated in gold in delicately traced designs, a butterfly and rose motif, one a Grecian urn and another a spreading floral spray.

Another new feature being introduced by the Cambridge Company is an eighteen piece household assortment consisting of six goblets, six tall sherbets and six iced tea glasses packed in a shipping carton. These may be had in the favorite colors, green, mulberry and amber glow.

The last shade, by the way, is a new amber tint of a rich deep hue, and is a color of wonderful warmth and of strong appeal in the many numbers in which it is featured."

EDITOR'S NOTE: Please excuse the lack of illustrations with Mark's article this month -- but it was almost impossible to do so, with any degree of accuracy, not knowing exactly which pieces the authors were describing.

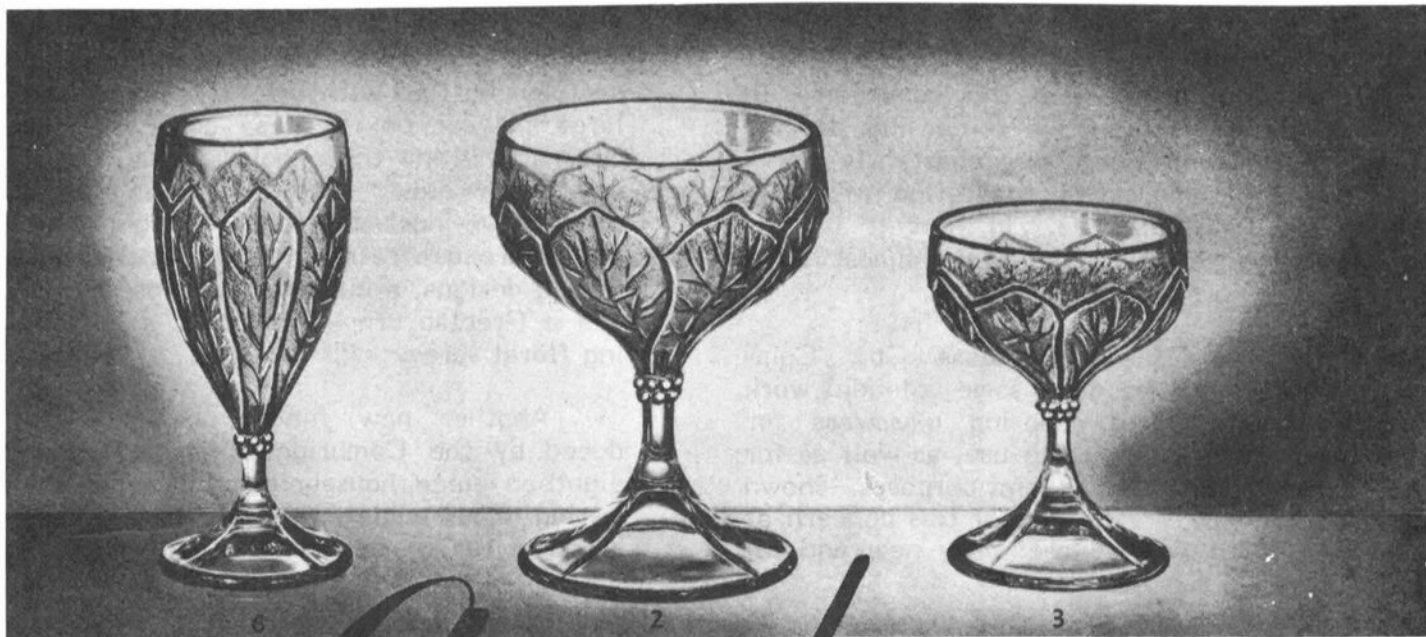
We would suggest that you use the new 1927-29 Catalog Reprint for reference, and draw your own conclusions as to which pieces they were referring. If you haven't as yet ordered this new book, you may do so from the Club. See page 2 for instructions listed under "Books For Sale."

Mark Nye's book on Cambridge Stems; the Near Cut book published by the Cambridge Buffs Study Group; and the 1985 Combined Price Guide for the 1930-34 and 1949-53 Catalog Reprints are also available. Why not take a few minutes and order these fine books, if you do not already have them.

"ARCADIA" CATALOG PAGES!

The following five (5) pages of Arcadia represent all of the known catalog pages of this pattern.

These pages were added as supplements to the 1940 Catalog after August 1940. Patent applications were filed August 26, 1941.

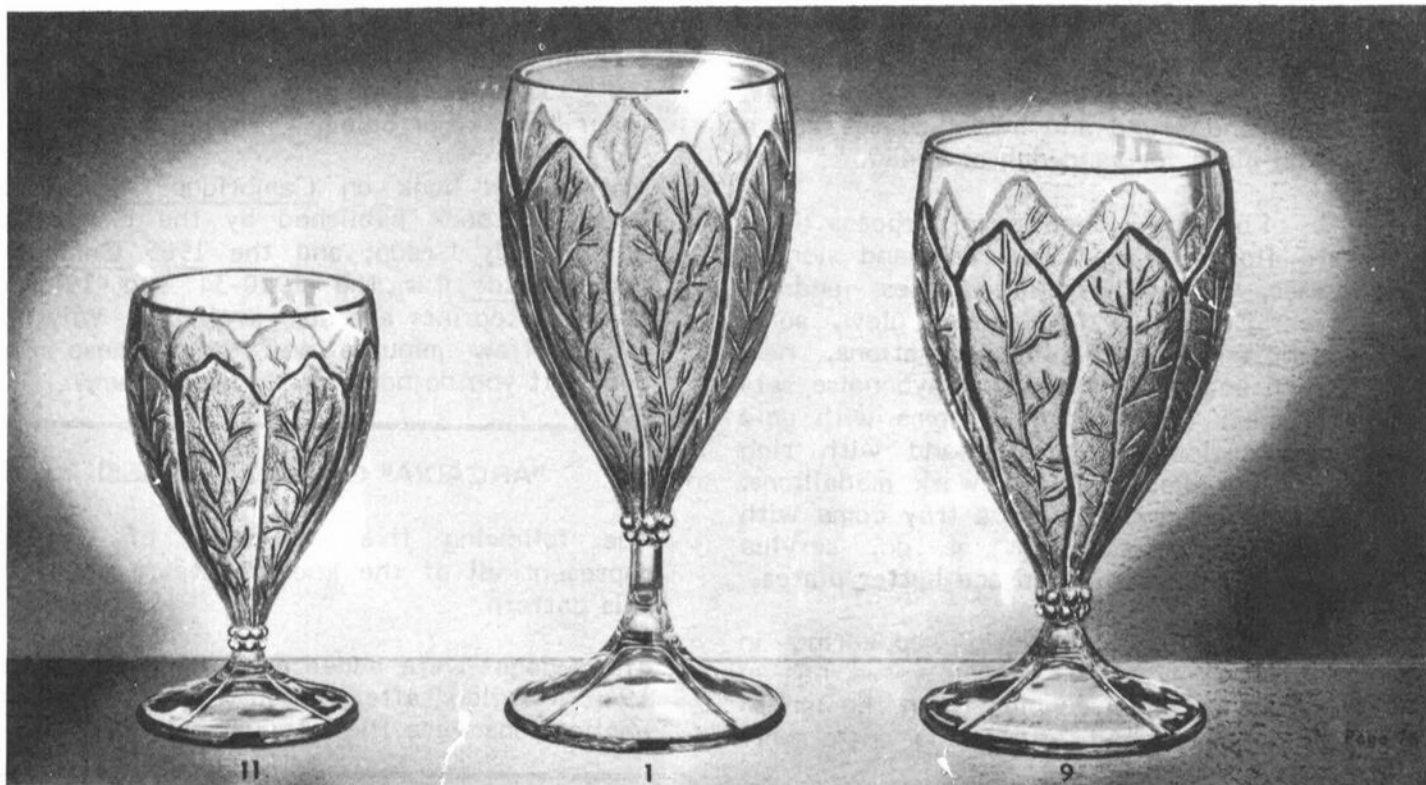


Arcadia

Patent Nos.
 130228
 130229
 130230
 130231



The Cambridge Glass Company, Cambridge, Ohio, U. S. A.





ARCADIA



146



144



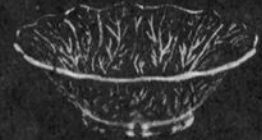
129



105



153



154



132



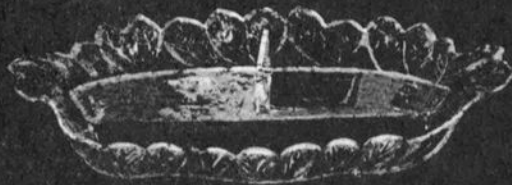
135



123



27



64



124



133



130



155



201



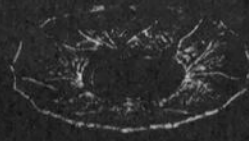
151



120



121



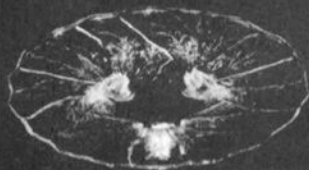
145



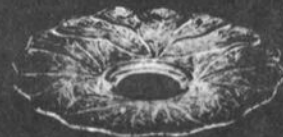
21



ARCADIA



125



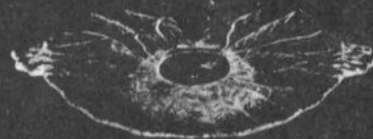
152



25



71



131



39



19



52



62



54



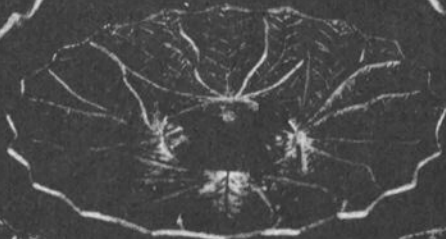
33



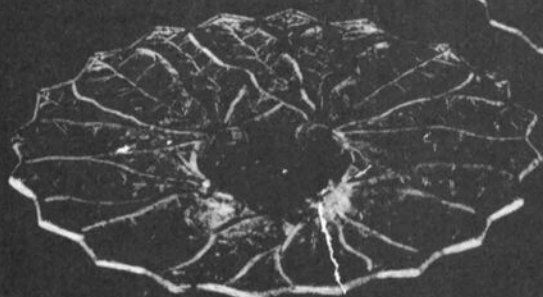
32



69



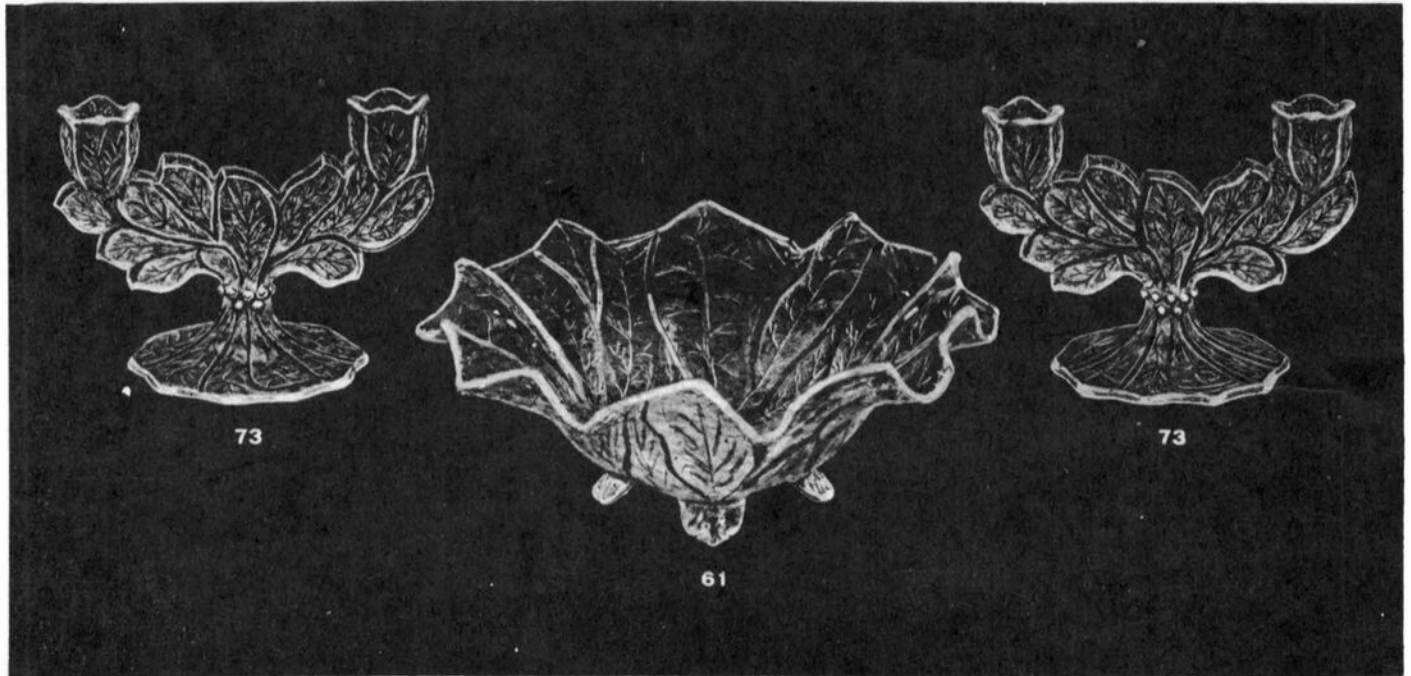
26



28



70



Arcadia

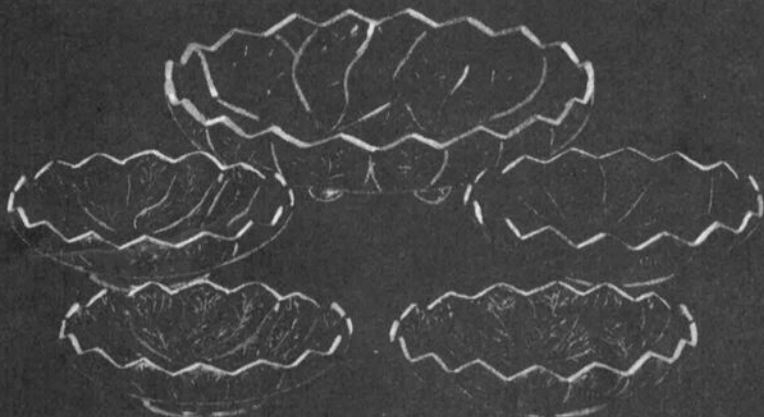
1 Goblet	1056 in. 2 pc. Mayonnaise Set (Bowl & Ladle)
2 Sherbet	1296 in. 3 pc. Mayonnaise Set
3 Cocktail	1656 in. Candy Box & Cover
6 Wine	6410 in. 3 part Celery & Relish
912 oz. Ftd. Ice Tea	1248½ in. 3 part Relish
115 oz. Ftd. Tumbler or Claret	1307 in. Bonbon, 2 Hdl.
216½ in. B & B Plate	1318 in. Bonbon Plate, 2 Hdl.
258½ in. Salad Plate	1327½ in. Bonbon Bsket, 2 Hdl.
2611½ in. Plate	1336 in. Bonbon, 2 Hdl.
3211 in. Plate, turned Edge	1357 in. Bonbon, Crimped, 2 Hdl.
2814 in. Plate	1206 in. Bonbon, 3 Ftd.
3313½ in. Plate, turned edge	1215½ in. Bonbon, 3 Ftd.
7015 in. Plate	1237 in. Bonbon, crimped, 3 Ftd.
6914½ in. Plate, turned edge	1258 in. Bonbon Plate, 3 Ftd.
1912 in. Bowl, Oval, Fancy Edge	1514½ in. Bonbon
3913 in. Bowl, Oval, Shallow Crimped	1527½ in. Bonbon Plate
5410½ in. Bowl, flared	1536½ in. Bonbon, Shallow
529½ in. Bowl, crimped	1546 in. Bonbon
6212½ in. Bowl, flared	1444½ in. Bonbon or Fruit
6112½ in. Bowl, crimped	1456 in. Bonbon Plate
7113½ in. Bowl, shallow cupped	1465 in. Bonbon or Fruit
72 (not illustrated) 3½ in. Candlestick	201Ice Pail w/Hdl.
736 in. 2 light Candlestick		
27 Sugar & Cream		

The Cambridge Glass Company, Cambridge, Ohio, U. S. A.



ARCADIA

Patent Nos. 130228, 130229, 130230, 130231



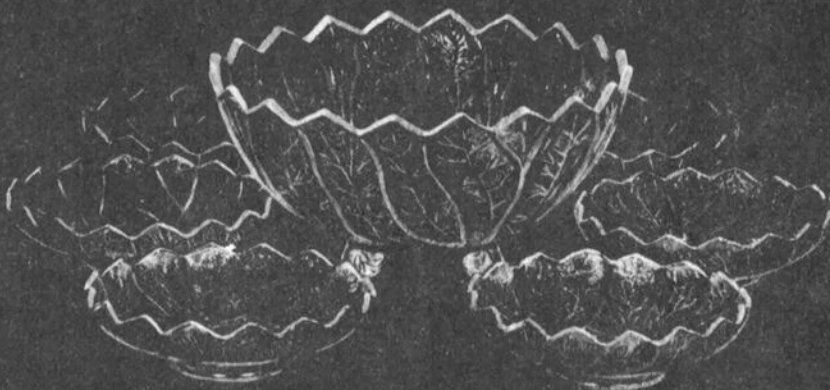
81—10 in. Salad Bowl (Shallow)
153—6½ in. Individual Salad Bowl
81/153—5 Piece Salad Set



82—12 in. Salad Bowl (Shallow)
Use with six No. 153 to make
82/153—7 Piece Salad Set



49—8 in. Salad Bowl (Deep)
Use with four No. 153 to make
49/153—5 Piece Salad Set



57—10 in. Salad Bowl (Deep)
153—6½ in. Individual Salad Bowl
57/153—7 Piece Salad Set



161—10 in. Footed Bowl



75—6 in. 2 Lite
Candlestick



74—5 in.
Candlestick



72—3½ in.
Candlestick

Westfall's Auction

On June 26th (the day before the 1986 NCC Convention got underway) Dean and Pauline Westfall of Cambridge, Ohio, held an auction, selling most of their collection of Cambridge glass and many, many other fine collectibles.

Over 500 pieces of Cambridge glass sold that evening and the following Saturday. Through their kindness, we have been given the results of that sale, and permission to publish same in the CRYSTAL BALL. We will start listing them this month, and finish next month, as space allows.

We are pleased to mention also that the Westfall's designated one item, a crown tuscan Seashell #7, 14" Torte plate with Charleton decoration, to be sold with all proceeds to go directly to the NCC Museum Fund.

We thank Dean and Pauline for their generosity, and kindness in allowing us to print the results of this Auction, and for their continued support of NCC!

As with all Auctions -- some of the items went for much less than what is considered market value; while others brought much more than anyone would ever have dreamed! You can never "hang your hat" on an Auction price, but they are fun to read about and ponder over!

Weatherford 6 3/4" Comport, em. grn.	20.00
11" Celery Tray, willow blue, signed	20.00
Cocktail, Farber hldr., f. grn.	6.00
Martha 2-hdl. Basket, crystal #326	11.00
#3500/17 7" Comport, Gadroon cryst.	17.50
Calla Lilly candlestick, ebony	12.50
#749, 6 1/4" BonBon, ebony	5.00
#138 Cream/Sugar, E520, peachblo	20.00
#16, 7" Helio Bowl	15.00
Mt.Vernon #9 Urn, slight damage, cryst.	22.50
Mt.Vernon #8 Cream/Sugar, carmen	25.00
Bashful Charlotte, 6", crystal	100.00
M.Washington 9" candlestick, cryst.	12.50
Everglade #2, 5" candlesticks, cryst.	30.00
#95 Weatherford matinee sugar, amber	7.00
#865 Cup/Saucer E731, peachblo	8.00
Comport, Farber holder, amethyst	17.50
Vase 9", E/Blossomtime, ebony w/gold	120.00
Martha deviled egg plate, crystal	27.00
#1066 9oz cryst.ft.& stem, RB Tumbler	90.00
#701 Name Plate, amber	52.50

#3400/119 12oz Ball Decanter, farber holder, amethyst	17.00
#17 Caprice cup/saucer, mocha	17.50
#3500/69, 3-pt Relish, f.grn. Gadroon	5.00
Martha Pickle Dish, 8 1/2" cryst.	16.00
Calla Lilly candlesticks, em. grn.	32.50
Cambridge Square Tea cup/saucer	10.00
NearCut Feather Bowl 5 1/2"	17.50
NearCut Feather shallow Bowl 11"	11.00
W127 Milk Glass 6" Vase	25.00
#1040 3" Swan, carmen, style #3	52.50
Lt. emer. grn. 3" Swan, style #1	27.50
#120 crys. Caprice 2-pt.Relish	14.00
#207 Cig. box w/lid, Caprice, rough	15.00
#65 crys. 11" oval Bowl, 4-ftd.	17.50
#3400/54 Cup/Saucer, heatherbloom	25.00
#12 Mt.Vernon Rose Bowl, heatherblm.	40.00
Decagon Celery Tray 11", E/Cleo, willow blue	20.00
#41 Cascade Cream/Sugar, em. grn.	20.00
#92 Mt.Vernon Ice Bucket, cryst.	32.50
#3500/94 Rams Head Candlestick E/Elaine, cryst.	45.00
#1043, 8 1/2" Swan, style 1, ebony	40.00
10 1/2" Tally-Ho Plate, carmen silver floral design	155.00
#43 Everglade Beer Mug, milk glass	20.00
NearCut Sugar, Wheat Sheaf #2660	22.00
Mt.Vernon Cup/Saucer, heatherbloom	10.00
#1402/37 2 1/2oz hdl. Tumbler, R.B.	9.00
#102 Oval Ind. Salt, crystal	21.00
Lady Legs Bookends, cryst. frosted	190.00
5 oz. Georgian Tumbler, smoke	16.00
Dolphin 2-lite, 5" Candlestick, crys.	30.00
#1044, 10" Swan, crys. style 1,flake	90.00
#1043, 8 1/2"Swan, crown, style 3,flake	50.00
#1043, 8 1/2"Swan, crys. style 3, chip	20.00
#1042, 6 1/2" Swan, ebony, style 1	50.00
Tally-Ho 3 oz Cocktail, Royal Blue, metal stem & bell foot	25.00
#863 10" Bowl, lt. em. grn.	40.00
10 1/4"Vase, lt. em. grn., block optic bottom	25.00
#870 Decagon 10 1/2" Tray, peachblo	20.00
#865 lt. em. grn. Cup/Saucer	10.00
#387 lt. em. grn. 2 1/2" Ashtray	5.00
#940 Ind. Cream, lt. em. grn.	7.00
#19 5 oz Cream, lt. em. grn.	7.00
#1147 Ice Tub, lt. em. grn.	20.00
#620, 3-pc. Sugar/Cream set w/silver overlay, lt. em. grn.	32.50
Lt. em. grn., base for hand mixer	7.00
#384 Bone Tray, lt. em. grn.	9.00
#3011/25 Nude Ivy Ball, royal blue	80.00
#1236, 8" ftd. Ivy Ball, royal blue	27.50
Blue Willow Cup & Saucer	25.00

continued on page 12

by MARK A. NYE

As long ago as the summer of 1937, companies like Cambridge Glass were coming up with new ideas to sell an existing product. They were busy creating a new market for old products, products readily available and perhaps not selling as well as they should.

Take for example, the piece of glass known as a Hollow Stem Saucer Champagne. Without reading any further, can you think of another use for this item, other than as a drinking vessel? Well, someone at Cambridge did, as witnessed by the following, written 49 years ago

"We (Cambridge management) have just recently discovered a new use for Hollow Stem Saucer Champagnes. This use is for Fruit Salad.

Fill the bowl with a nice fruit salad and then pour over the salad a little grenadine, raspberry, cherry or any bright colored juice. This of course goes down into the hollow stem and makes a most beautiful piece on the table.

We believe if you promote this idea to your customers, you will find that they will be able to sell a great many Hollow Stem Champagnes.

. . . . we would suggest that you have one of these fixed up by one of the concerns who make displays for restaurants and soda fountains out of artificial fruit.

For your own satisfaction, simply get your wife to make up a fruit salad in a hollow stem champagne then write and tell us just what you think of the idea.

Yours Truly
THE CAMBRIDGE GLASS COMPANY"

It was, and remains, an innovative use of Hollow Stem Champagnes. I would try it, but have none in my collection. If any of the CRYSTAL BALL readers have such items available, do try serving fruit salad in this manner and share your thoughts (and photo's) with us through the CRYSTAL BALL, on the appearance and how it was received.

#1236, 8" ftd. Ivy Ball, forest grn.	17.50
#1236, 8" ftd. Ivy Ball, amethyst	25.00
#3300 4 oz. Sherbet, willow blue	2.00
#1096 Sugar, willow blue	5.00
#3500/55 Gadroon 6" Basket, f.grn.	9.00
#3400/11 3-pc. Mayo Set, f. grn.	30.00
Sea Shell 8" 4-toed oval Bowl, f. grn.	17.00
#1066 7 oz. tall Sherbet, f. grn.	4.00
#933 Avocado Cup & Saucer	75.00
#42 Shell Flower Center, f. grn.	55.00
#42 Shell Flower Center, crown 8"	70.00
Farber Cream/Sugar/chrome tray, f.grn.	15.00
Farber 3-pc. same as above, amber	20.00
#1066 Ivy Ball, 7", amber	15.00
#1067 2-compt. Relish 9", amber	15.00
#758, 5 1/2" BonBon, 2-hldd., amber	11.00
#112 Lexington 5" Mayo, amber	17.50
#1217 4oz Bitters Btl., amber	27.50
#387, 2 1/2" Ashtray, amber	1.00
#815 Decagon 7 1/2" Plate, amber	6.00
#437 Candlesticks 9 1/2", amber	22.50
6" Caprice Mayo Plate, blue	10.00
#216 Caprice 5" Ashtray, blue	7.50
#3400/638 3-lite Candelabra, willow blue frosted	25.00
#16 Comport 7" windsor blue	60.00
Decagon 7" Plates, cobalt blue (6)	18.00
Decagon Cups/Saucers, cobalt blue (4)	21.00
#3400/62 8" Salad Plates, amethyst (6)	42.00
#3400/38 12oz. Tumblers, amethyst (5)	20.00
#8161 2oz Tumbler, amethyst	3.00
#3400/68 Sugar, amethyst	3.00
#3450 5oz Nautilus Tumbler, royal blue	6.00
W131 milk glass 7 1/2" Sea Shell Vase	65.00
Chrome Farber Nude Candlestick	22.50
Covered Candy Farber holder, amethyst	15.00
#756 12" Decagon Bowl, amethyst	20.00
10" Basketweave Bowl, lt.blue	20.00
#437 9 1/2" Candlesticks, royal blue	40.00
9" Heron Flower Holder	42.50
8 1/2" Decagon Crackle Plate, peachblo	2.00
#1095 3-pc. Sugar/Cream Set, peachblo	16.00
#870 11" Sandwich Tray, peachblo	20.00
#652 11" Celery, peachblo	21.00
#138 Cream/Sugar E703, peachblo	15.00
#867 Decagon Crm./Sug., peachblo	25.00
#300/6 3-toed Candy w/lid E725 p'blo.	25.00
#1128 crystal Scottie Dog Bookends	130.00
#1138 Sea Gull Flower Holder	30.00
#1115 11" Bashful Charlotte, di. pink	42.50
#1042 6 1/2" Swan, dianthus pink	35.00
#3011/40 10" Flower or Fruit Center, crown tuscan	160.00
#46 7 1/2" Shell flower holder, crown	80.00
6 1/2" green Carnival Strawberry Near Cut Bowl	37.50
Brown Monkey Lamp, cracked	500.00

THE DAILY JEFFERSONIAN

Cambridge History From News Articles

by CHARLES A. UPTON

(EDITOR'S NOTE: This is the eighth in a series of Historical articles which began in the February 1986 issue of the Cambridge CRYSTAL BALL.)

CAMBRIDGE			
Stoebe	181	148	187
Ayers	135	129	170
Parks	143	175	191
Strong	136	154	164
Laverty	<u>150</u>	<u>170</u>	<u>170</u>
Totals	<u>745</u>	<u>776</u>	<u>882</u>

#####

"LAD INJURED AT GLASS PLANT"

The Daily Jeffersonian, Cambridge, Ohio.

Friday, January 15, 1909 . . . John Carlisle, age about 16, of Carlisle Avenue, had his foot painfully mashed at the Glass plant, Wednesday night, by a heavy mould falling on it. He has been confined to his home since the accident and it will be several days before he will be able to return to work.

#####

"LOCAL MOLD MAKERS TAKE OVER NEWARK"

The Daily Jeffersonian, Cambridge, Ohio.

February 1, 1909 . . . IN SECOND CONTEST, GAMES AT HANNAN'S ALLEYS SATURDAY NIGHT WERE INTERESTING.

The Mold Makers of the Cambridge Glass Plant and the Mold Makers of the Newark Glass Plant played the second of their series of games Saturday night, at Hannan's Alleys, the locals winning out by ninety pins. The first game of the series was played in Newark two weeks ago, and resulted in a victory for the Newark boys, but since that time the locals have been putting in their time practicing and turned the tables.

All three of the games were interesting although no high scores were made. With a victory for each team, the third contest will no doubt be very interesting. The date for the rubber has not been decided on.

The scores for the games Saturday evening were as follows:

NEWARK			
Trickey	136	186	153
Squiggens	156	148	141
Hawkins	176	192	183
Wendelham	107	140	153
Tracy	<u>152</u>	<u>145</u>	<u>145</u>
Totals	<u>727</u>	<u>811</u>	<u>775</u>

The Cambridge Jeffersonian.

Thursday, February 4, 1909 . . . A remarkably clean and pure glass sand field is about to be opened in Coshocton County, said to be the finest in the country. New Philadelphia capitalists are behind the enterprise.

#####

The Cambridge Jeffersonian.

Thursday, February 11, 1909 . . . The actual work of dissolving the National Glass Company began yesterday, when the company sent out circular letters notifying the trade that the factories will be operated independently hereafter. The company was organized a few years ago, capitalized at \$5,000,000 and controlled 21 factories all making tableware. Employees are suffering by the dissolution, as there appears to be disposition in many of the plants, now that they are operating independently, not to keep to the agreement the big company made for all plants — Martins Ferry Times.

#####

"TRANSFER OF PLANT COMPLETED"

The Cambridge Jeffersonian.

Wednesday, May 26, 1909 . . . ENTIRE HOLDINGS OF BANKRUPT NATIONAL GLASS CO. NOW OWNED BY McLLOYD.

The property of the bankrupt National Glass Co., part of which is the building and some of the machinery has been acquired by David McLloyd from the Union Trust Co., trustee of the bondholders, consideration \$200,000. The property transferred is located in seven Ohio counties — Muskingum, Guernsey, Belmont, Washington, Fairfield, Hancock and Stark counties.

continued on next page

UPTON RESEARCH....continued from last page

The deed was executed Nov. 10, 1908, and has been recorded in all of the above counties, and the property described consists of glass factories in those seven counties.

The change does not effect the running of the local plant, but a lease from the new owners must be obtained by The Cambridge Glass Co. This company expects to have the lease within a short time.

#####

"PATENT GRANTED"

The Cambridge Jeffersonian.

Thursday, June 3, 1909 . . . H.E. Dunlap, patent lawyer, of Wheeling, W. Va., and 216 McGill Building, Washington, D. C., reports the recent issue of the following patents to Eastern Ohio inventors, and among them is A. J. Bennett, Cambridge, lemon-squeezer.

#####

"RESIGNS AS TREASURER OF GLASS CO."

The Daily Jeffersonian, Cambridge, Ohio.

Friday, July 2, 1909 . . . George W. Dewey has resigned as treasurer of the Cambridge Glass Company and expects to leave in a short time for Oklahoma, where he will be associated with his father-in-law, who is engaged extensively in the oil business. Mr. Dewey has been connected with The Cambridge Glass Company for two years and has proven very efficient in the important position which he has held. He has also made many friends in and out of the office who will regret to have him leave Cambridge.

The position of treasurer has been filled by G. Roy Boyd, former secretary-treasurer of the same company and later president and manager of a large glass company at Martins Ferry, Ohio. The difficulties which the National Glass Company later encountered, let Mr. Boyd out of his position, and the local company is very fortunate to again secure his services. The company's organization is now practically the same as existed before Mr. Boyd was transferred.

#####

"GLASS PLANT CLOSES DOWN"

The Daily Jeffersonian, Cambridge, Ohio.

Wednesday, July 7, 1909 . . . The Cambridge Glass Plant closed down Saturday at noon for the annual two weeks vacation. Last year there was no summer vacation because of the

large number of big orders on hands that had to be filled at once, and because of that fact needed repairs to the factory were not made.

This year the shut-down was necessary for repairs, which will include a new floor in the factory part of the plant. Many of the operators at the plant are taking advantage of the shut-down to visit relatives and friends in other cities.

#####

"NEAR CUTS WIN IN 18 INNINGS"

The Daily Jeffersonian, Cambridge, Ohio.

Monday, August 2, 1909 . . . REMARKABLE BATTLE WITH MARIETTA. CARPENTER, THE NEW SLAB ARTIST, STARS. The Cambridge "Near Cuts" team have returned after playing two of the most remarkable games in their history Saturday and Sunday.

SATURDAY'S GAME

For 18 innings, these two rivals battled hard for supremacy. Cambridge finally securing the winning tally in the eighteenth. Score 3 to 2. Carpenter, the new "Near Cut" find, was on the mound and allowed only five hits. Meissner, the other new player secured by Manager Clark played like a veteran at short, and the game was a hair-raiser. In the second on a passed ball, Marietta secured the first tally, and not until the ninth did another man cross the rubber, when a two-bagger by Capt. Ed. Strong, followed by a ringing single by Meissner scored Strong. In the fourteenth, Cambridge pushed another over the plate, but Marietta likewise scored. And on they fought until the eighteenth. Cook caught the game. The hits and errors were Cambridge 14 hits, 2 errors; Marietta 5 hits, 2 errors.

PARKERSBURG GAME

The West Virginia bunch succeeded in shutting out the visitors in Sunday's game. Dutch Walters pitched an elegant game, allowing only four hits, but three of them came together in the 9th and gave two runs, while in the 2nd, a passed ball let in the first tally. Cook caught this game also. The hits and errors were: Cambridge 6 hits, 2 errors; Parkersburg 4 hits, 2 errors.

A full account of both of these games taken from Marietta and Parkersburg exchanges will appear in tomorrow's issue.

Manager Clark and Capt. Ed. Strong have reorganized the "Near Cut" team, making a much stronger aggregation. They have their winning clothes on and the very best sport can be expected.

#####

Duncan & Miller Research Reveals a Treasure Trove

by George A. Fogg

From the Pottery, Glass & Brass Salesman,
Vol. XLIII, No. 1, February 5, 1931.

The PG&BS had a page entitled "Buyin Chicago," under which they proclaimed "The Great Central China and Glassware Market," and on this page was a column headed "The Rounder" -- whatever that means. This page had little boxes for advertisements down each side of the page, not unlike ones run in the CRYSTAL BALL. The middle of the page was devoted to "The Rounder." The article below is from Vol. XLIII, No. 1, February 1931.

"Cambridge Glass Co.

Three New Numbers Have the Merit of
Distinctive Novelty

Felix Wohlgemuth, manager of the Chicago sales office of the Cambridge Glass Company, Cambridge, Ohio, is showing several novelties of interest to the trade at his show-rooms in the Merchandise Mart. The novelties include a figure flower holder, an unusual candle-holder of Victorian motif and a distinctive comport set priced especially for a February sale. Designed with a high degree of artistic ability, these novelties achieve that difficult effect of being 'novel' and in good taste simultaneously.

Probably the most unusual of the three numbers is the candle-holder. It is featured by a locking bobèche which by a patented feature cannot fall off. Suspended from this bobèche are six glass pendants, reminiscent of the oil lamps of the traditional Victorian drawing room. The holder is a graceful concession to the current interest which is being evidenced in the worthy efforts of the Victorian era.

The flower holder is distinguished by the graceful figure of a heron standing on a base containing ten holes for flowers. Surrounded by flowers of equal or greater height, the effect is one of striking loveliness, simulating with charming accuracy a heron surrounded by tall growing things in its natural habitat."

You will find the writer of these articles is generally glowing with phrases and praises of whatever he is describing. An aside to all this, the articles remained all very much in the same vein all the way through the PG&BS.

The column proclaims three numbers. Fine -- but notice how the writer kisses off the comport set. Much is said about the "candle-holder" and the "heron flower holder," but only the most brief mention of the comport set is made. One wonders what comport it could have been. Also, what candlestick. This should send you all to the catalog reprints to see what you can come up with for suggestions. Have fun looking and let me know how you like this column. How about our candlestick authority telling us what stick he thinks it is?

— Classified —

BUYING: Caprice blue or Rosepoint by Cambridge. Rose or Orchid by Heisey. American, June, Fairfax, Versailles, Trojan by Fostoria. Also Depression Glass and all crystal or colored of that era. **Nadine Pankow**, 207 S. Oakwood, Willow Springs, IL 60480. 312/839-5231

FOR SALE: Crystal 3½" Chantilly Coaster \$20. Forest green Bitter Bottle w/Farber base \$15. Top Hat cigarette holder, crystal w/ruby flashing on rim \$22. Crystal oval Cambridge Display Sign \$105. **Mike & Karen Tippens**, 712 Roy Beatty Lane, Waco, TX 76705. 817/799-8983 after 3 p.m. Postage Extra.

LOT SALE: Collection of Blue Caprice. 20 year collection — 139 pcs. Blue Caprice and 6 pcs. misc. moonlight blue. To Sell Only as Total Collection! Best reasonable offer. Complete list available. Call: Akron, OH 216/724-3232. Leave message on phone recorder if no answer!

Study Club News

STUDY GROUP #7 - EASTERN OHIO "THE CAMBRIDGE BUFFS" Phone: 614/432-5230

The Cambridge Buffs Study Group held their July meeting in the home of Pauline and Dean Westfall. Fourteen of our sixteen members were present.

Program was on Georgian tumblers and was presented by Tom Gray who has a large collection of different sizes and colors.

Show & Tell items included: Primrose comport; Alpine blue Caprice stemware; moonstone vase with silver overlay.

Our August meeting will be held at the home of Charles and Mary Alice Upton. We will have a guest speaker.

submitted by Deanne Gray

STUDY GROUP #8 - SOUTHERN MICHIGAN "THE MICHIGAN CAPRICES" Phone: 313/655-4703

(Editor's Note: I apologize for the lateness of this report. It was received quite some time ago, and misplaced. I found it while attempting to clear off my desk!)

May 27th, the Michigan Caprices met at the home of Clara and Ray Brown. Shirley and Don Ladouceur from the New York Fingerlakes were guests. The Brown's & Ladouceur's had attended the Midland Antique & Flea Market the day before, and had found a few interesting Cambridge items.

We had a general talk on Cambridge glass. For Show & Tell Carol Coppo had a beautiful #1238 Vase with a Diane etching, which had another etching on the top not very often seen. You might check page 101 in NCC's 1949-53 book. Of course we had to see the beauties Don and Shirley found. I'm sure you will see some of them at the Show during Convention.

The meeting was concluded with dessert and coffee.

submitted by Phyllis Hayes

STUDY GROUP #11 - ILLINOIS "THE CAMBRIDGE NUDES"

The Cambridge Nudes met June 29th, in Room 231 at the Shenandoah Inn, during the 1986 NCC Convention. There were 14 members and guests present.

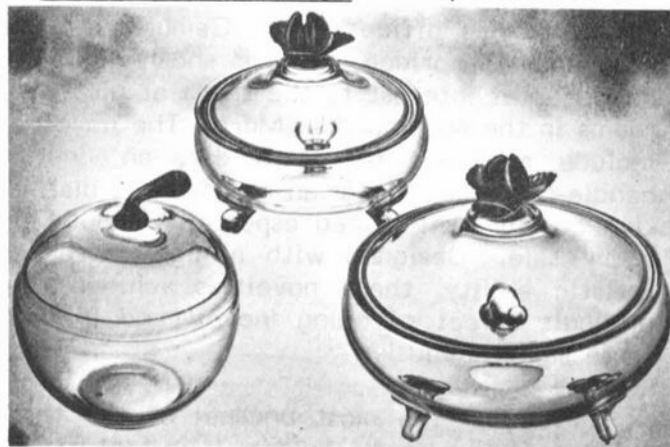
The Nudes welcomed four new "Nudes". Mary Sue Lyons, Linda Balster, and Marti and Toby Mack.

We discussed T-Shirt sales and decided to donate 100 shirts to the Museum. Since our meeting was held after the Saturday evening Banquet, it was kept short. We then adjourned to our beds to have visions of "Cambridge Glass" dance thru our heads.

Next meeting will be August 8th at the home of the Curnutts.

submitted by Jane Kersey

China, Glass & Lamps for September 1940



Cambridge Candy Boxes Seen at Macy's

SHOWCASE ANTIQUE and GIFT SHOP

EVELYN M. ALLEN

1263 HEBRON RD. (Rt. 79), HEATH, OH 43056
614/522-1785

HOURS: 12:30 to 5 PM DAILY
(Closed Monday)

BUYING and SELLING: CAMBRIDGE, HEISEY,
FOSTORIA, FENTON, & OTHER AMERICAN
MADE GLASS, & POTTERY.
NEW GIFT ITEMS.

Other hours by Appointment Home Phone: 614/522-1635

**COLUMBUS ANTIQUE
FLEA MARKET
(ANTIQUES & COLLECTIBLES)**

Ohio State Fairgrounds - Lausche Building
Off I-71 Exit 17th Avenue - Columbus, Ohio

SEPTEMBER 7th

Sunday Only - 7 A.M. to 4 P.M.
Show Admission \$1.00 - Under 12 Free
150 QUALITY DEALERS

SELLING: Advertising Art Deco, books, Cambridge, clocks, coins, collectibles, Depression glass, dolls, Fiesta, fine early furniture, Heisey, jewelry, lamps, oak furniture, post cards, pottery, good primitives, tools and print shop items.



4214 North High Street, Columbus, Ohio 43214
(614) 267-8163 (614) 263-6830 (614) 885-2352

NEXT SHOWS: October 12, November 9, and December 14

The DAZE

★ SPECIAL OFFER
to NCC friends
\$2. off the 1 year
subscription price,
when on this form
or copy of.

The Original, National monthly newspaper dedicated to the buying, selling & collecting of colored glassware and china including Depression Glass and the Elegant Glass (Cambridge, Heisey, Fostoria etc.) . We educate and inform you each month with feature articles by top notch columnists, readers "finds", club happenings, show news and a multitude of ads. Find those missing pieces to your 30s, 40s or 50s pattern. Can't identify it? Perhaps we can help. "Keep up with what's happening with a subscription to the DAZE. Buy, sell or trade from the convenience of your easy chair.

Name _____ Street _____

City _____ State _____ Zip _____

1 yr. - \$15.00 2 yrs. \$29.00 \$1.75 single current copy
 Check enclosed MasterCard Visa

Exp. date _____ Card No. _____

Signature _____

Orders to D.G.D., Box 57NC, Otisville, MI 48463

Please allow 30 days for your first issue — Canadian subscribers, add \$1. per year and subscribe by charge card only! This Special Offer May Not Be Combined With Other Special Offers

STAGE COACH ANTIQUE MALL

(formerly White Pillars Antiques)

Doris & Roy Isaacs

7525 East Pike
Norwich, OH 43767

614/872-3720

MANY DEALERS . . .

PLENTY OF PARKING . . .

WIDE SELECTION OF GLASS
AND POTTERY
FURNITURE AND
GENERAL LINE!

BUY and SELL

OPEN YEAR ROUND
Weekdays - 10 AM - 5:30 PM
Sunday - 12 noon - 5:30 PM
Summer Evening Hours - by Chance!

Located 9 miles E. of Zanesville, OH, on I-70 to Norwich
Exit #164 - then 1/2 mile W. on Route 40.

FIESTA

FENTON

DECO

ART GLASS

MORGANTOWN
IMPERIAL
HALL
DEPRESSION GLASS
TIFFIN
CAMBRIDGE
FOSTORIA
HEISEY

TIFFANY
CARNIVAL
DRESDEN
MIESSEN
WEDGEWOOD
CRYSTAL
BAUER
ROSEVILLE

SAN FRANCISCO ANTIQU & DEPRESSION ERA GLASS CHINA, POTTERY SHOW & SALE

(EAST COAST DEALERS EXHIBITING)

SAT OCT. 11th, 1986 10am-5pm.

SUN OCT. 12th, 1986 10am-5pm.

AT

THE HALL OF FLOWERS

9TH AVE. & LINCOLN WAY
INSIDE GOLDEN GATE PARK

Admission \$2.50
(\$2.00 WITH THIS TICKET)

For Information Contact
"UP TO PARR"
592 Guerrero Street
San Francisco, CA 94110
(415) 285-5657

REFERENCE BOOKS - GLASS REPAIR AND A WHOLE
LOT MORE



DEALERS DIRECTORY

NOTE When writing to the Dealers listed here please enclose a SASE!

SPECIALIZE IN CAMBRIDGE GLASS & ANTIQUES
DOYLE L. BYINGTON
 58 Buena Vista Ter., San Francisco, CA 94117
 415/621-1854
 Shows: Mail-Order - Buy & Sell - By Appointment

MILBRA'S MATCHING SERVICE
 P.O. Box 363, Rio Vista, TX 76093
Milbra Long 817 / 645-6066
 FOSTORIA * CAMBRIDGE * HEISEY * DEPRESSION
 ERA GLASSWARE
BUY and SELL

ANDREJCAK'S ANTIQUES
 14533 Bayes Ave.
 Lakewood, Ohio 44107
 Joe & Karen Andrejcek 216-226-3417
SHOWS ONLY — CAMBRIDGE — FENTON — CHINA

BOGART'S ANTIQUES
 Stagecoach Mall, Building #2
 Norwich, OH 43767
 * * * * *
Jack and Sharon Bogart
 614/826-7439 and 614/872-3514
 * * * * *
 BUY - SELL - APPRAISE - REFINISH
 SEAT WEAVING - CLOCK REPAIR
 COPPER & BRASS POLISHING
GENERAL LINE CAMBRIDGE GLASS

THE GLASS CUPBOARD
 39 Shire Oaks Drive
 Pittsford, New York 14534
 Marcia Ellis Cambridge, Duncan Miller
 (716) 586-7596 Shows, Mail Order, Appt.

PEG AND DALE GOTSCHALL
 Antiques, Cambridge and Other Quality Glass
 833 N. 6th St., Cambridge, Ohio 43725
 Phone 614/432-5529
 Stagecoach Mall — Bldg. 2 — Norwich, Ohio

THE HITCHING POST
 7467 S. R. 88
 Ravenna, OH 44266
 Ph. 216-296-3686 D. McDaniel
CAMBRIDGE — HEISEY — GENERAL LINE

L & M ANTIQUES
 1331 S.E. 4th Ave., Pompano Beach, FL 33060
 Lydia & Cliff McNeil 305/943-2274
CAMBRIDGE & FOSTORIA OUR SPECIALTY
 Buy & Sell Shows Only

THE GLASS URN
 456 West Main Street, Suite G.
 Mesa, AZ 85201 602 / 833-2702
 Mail Order Shows Open Shop
CAMBRIDGE, FOSTORIA, HEISEY, ETC.

BENICIA ANTIQUE SHOP
 305 First Street
 Benicia, California 94510
OPEN 11 AM - 5 PM
 Closed Monday
 Z. E. LOPES 707-745-0978
VISIT HISTORIC BENICIA
 and its 28 shops
 Off Interstate #80
 North of San Francisco

RICHARD BENNETT
 64183-Warne Drive, Cambridge, OH 43725
 Phone: 614 / 432-4483
SPECIALIZING IN CAMBRIDGE GLASS
 Stagecoach Mall - Bldg. 3 - Norwich, OH

D & D ANTIQUES
 Columbus, Ohio
DICK SLIFKO SHOWS ONLY

JUDY'S ANTIQUES
 Judy Bennett
 422 S. Ninth Street (Corner of Jefferson)
 Cambridge, Ohio 43725
BUYING Ph. 614-432-5855 SELLING
Cambridge Glass my Specialty

GREEN ACRES FARM
 2678 Hazelton Etna Rd., Pataskala, OH 43062
 (State Route 310 North)
 Sat. & Sun. 1-7 PM 614/927-1882
Antiques, Crystal Glass and Collectibles

BUY-SELL 513/390-3617
Taste of Honey
 Glassware—Collectibles
 CLARKE & CAROLE WEST 3433 Turner Dr.
 Springfield, OH 45504

REMEMBRANCES
 7597 Daphne Dr., No. Syracuse, NY 13212
 Shirley S. Ladouceur 315 / 458-5297
 ANTIQUES and COLLECTIBLES
MAIL ORDER SHOWS APPOINTMENTS

AL STEELE
 Westerville, Ohio
 614-882-6483 or 614-882-7124
 Mail Orders and Shows Only
HEISEY — CAMBRIDGE — PATTERN GLASS

CHARLES MIKULIK
 Box 416
 Elizabeth, N.J. 07207
— COLLECTOR —
 Always paying good prices for
CAMBRIDGE CAPRICE
 in all colors
 201-688-1144
CARRY MOST TYPES OF ANTIQUES

BERKELEY ANTIQUES
 69 Berkeley St., Boston, MA 02116
OPEN: Monday thru Saturday 11 AM to 5 PM
 GEORGE & FRANK 617/426-1048
DUNCAN, CAMBRIDGE, HEISEY, GENERAL LINE

THE GLASS MENAGERIE
 322 Market Street: Suite 101
 Denton, Maryland 21629
 Barbara & Bill Danels 301/822-8794
SPECIALIZING IN GLASSWARE OF THE DEPRESSION ERA

"Happiness Is" - The Stultzs
 3106 Warren Court, Glen Allen, VA 23060
 Shows and Mail (Richmond Area) 804/262-1273
 GLASS CIRCA 1890-1960

MOSTLY HEISEY
 16 Clayton Place, Albany, NY 12209
 Rhoda Curley 518 / 482-6272
SHOP and MAIL ORDER

1886 HOUSE
 East Schodack, N.Y. 12063
MAIL and SHOWS
 Laurie Cruise 518-477-5895
CAMBRIDGE - NORITAKE - AZALEA - D.G.

MARGARET LANE ANTIQUES
 2 E. Main St., New Concord, OH 43762
 Lynn Welker 614/826-4418
CAMBRIDGE GLASS MATCHING SERVICE
 Hours Mon.-Fri. 1-5 PM or by Appointment

SKYLINE DRIVE ANTIQUES
 5432 Skyline Drive, Cambridge, OH 43725
 Drew & Donna Davis 614 / 432-2621
SPECIALIZING IN CAMBRIDGE GLASS!
 Shows Mail Order Matching Service



National Cambridge Collectors, Inc.

P. O. Box 416, Cambridge, Ohio 43725

The National Cambridge Collectors, Inc. is proud to present an original film produced by the Cambridge Glass Co. in the 1950's. The film is entitled THE CRYSTAL LADY. It is a most interesting film and includes pictures of the factory and the workers making the fine Cambridge Glass. It is a 16mm sound movie that runs about 40 minutes.

The following 5 slide presentations are now available:

No. 1 is on the Display rooms and close-up shots of particular pieces of interest.

No. 2 is of different stems made by Cambridge Glass Co.

No. 3 covers Cambridge Glass candlesticks.

No. 4 is of Cambridge colors.

No. 5 presents Cambridge Glass figurals.

These 5 presentations are available in Kodak carousel slide trays and are supplied with narratives on each slide.

NOTE: NCC Study Clubs may use these presentations free of charge except for postage to and from destination.

TO RESERVE PLEASE CHECK THE ITEM (OR ITEMS) DESIRED.

MAKE CHECK PAYABLE TO: NATIONAL CAMBRIDGE COLLECTORS, INC.

THE CRYSTAL LADY and all 5 slide presentations have a deposit fee of \$25 and a rental fee of \$15 which will be deducted from the deposit fee.

THE CRYSTAL LADY

No. 1 Display rooms and particular pieces

No. 2 Stems

No. 3 Candlesticks

No. 4 Colors

No. 5 Figurals

TOTAL DEPOSIT FEE:

NAME OF ORGANIZATION:

ADDRESS:

CITY & STATE:

ZIP

DATE NEEDED:

MARK YOUR CALENDAR

NCC QUARTERLY MEETING

Saturday, November 8, 1986

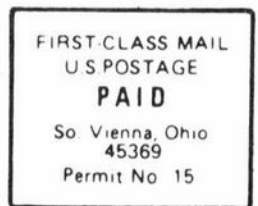
Elk's Club
Cambridge, Ohio

Complete Details in the October 1986

CRYSTAL BALL

WATCH FOR IT!

National Cambridge Collectors, Inc.
P. O. Box 416 Cambridge, Ohio 43725



FIRST CLASS MAIL

What happens if a glass blower breaths in?
He gets a pane in his stomach!

--- Virginia Houston

First Day of Autumn