



# Cambridge Crystal Ball

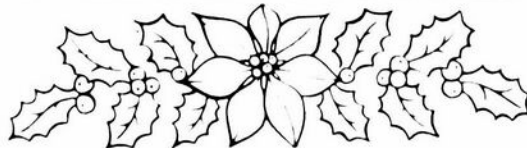
Published monthly by the National Cambridge Collectors, Inc.  
to encourage and report the discovery of the elegant and boundless product  
of the Cambridge Glass Company of Cambridge, Ohio

Issue No. 164

December 1986



*A warm and friendly  
wish of cheer*



*for Christmas and  
the New Year~*

### **Membership Renewal Notice**

This is your **last** issue of the *Crystal Ball*—if the date on your address label reads **12-86**.  
*Please renew now!*

**From your  
Officers, Board of Directors  
and  
CRYSTAL BALL Staff**

# CAMBRIDGE CRYSTAL BALL

Official publication of National Cambridge Collectors, Inc., a non-profit corporation with tax exempt status. Published once a month for the benefit of its members.

Membership is available for individual members at \$13 per year and additional members (12 years of age and residing in the household) at \$3 each. All members have voting rights, but only one *Crystal Ball* will be mailed per household.

Back issues of the *Crystal Ball* are available (beginning with Issue No. 1, May 1973) for members only. Cost \$6.00 each or 12 issues for \$7.

## 1986-87 OFFICERS & COMMITTEE CHAIRPERSONS

PRESIDENT.....	Willard P. Kolb
VICE-PRESIDENT.....	Mark A. Nye
SECRETARY.....	Janice Y. Hughes
TREASURER.....	William C. Smith
SERGEANT-AT-ARMS.....	Marybelle Moorehead
BUDGET & FINANCE.....	David B. Rankin
BY-LAWS.....	Ekkehart A. Vimmer
CONVENTION.....	Mark A. Nye
MEMBERSHIP.....	Phyllis D. Smith
MUSEUM.....	Billy F. Harbaugh
PROGRAM & ENTERTAINMENT.....	Marlene K. Snyder
PROJECT.....	Willard P. Kolb
PUBLIC RELATIONS.....	William C. & Phyllis D. Smith
PUBLICITY.....	Joseph Andrejcek
STUDY GROUP ADVISOR.....	Phyllis D. Smith
1987 AUCTION.....	Lynn M. Welker
1987 ANTIQUE SHOW.....	Joy R. McFadden
1987 FLEA MARKET.....	Larry F. Hughes
CRYSTAL BALL EDITOR.....	Phyllis D. Smith

## CLASSIFIED ADVERTISING RATES

5c per word \$1.00 minimum  
 We cannot mix type size in classified advertisements. Abbreviations and initials will count as words. Payment in full MUST accompany all ads.

## DISPLAY ADVERTISING RATES

(camera ready ads preferred)

	Members	Non-Members
1 8 page (9 items) .....	\$4.00	\$6.00
1 4 Page (20 items) .....	7.00	10.00
1 2 page (20 items) .....	12.00	18.00
3 4 page .....	17.00	25.00
Full page (50 items) .....	22.00	33.00

## DEALERS DIRECTORY

5 line maximum ..... \$12.00 for 12 months  
 Cambridge *Crystal Ball* assumes no responsibility for items advertised and will not be responsible for error in price, description or other information.

*Advertising copy, articles, club news and notices must be in our hands by the 10th of each month to assure publication in our next issue. Paid advertisements containing reproductions or new glass will not knowingly be accepted for publication.*

Opinions or information stated in any signed article or letter printed in the *Crystal Ball* are those of the authors and may or may not agree with National Cambridge Collectors, Inc. The Editor reserves the right to refuse and to edit any material submitted for publication so as to conform with the editorial style of the *Crystal Ball*.

## PLEASE ADDRESS ALL CORRESPONDENCE TO

National Cambridge Collectors, Inc.  
 P.O. Box 416 Cambridge, Ohio 43725

**PRESIDENT: Willard Kolb .... 614/695-0695**  
**SECRETARY: Janice Hughes ... 614/432-7823**  
**EDITOR: Phyllis Smith .... 513/323-3888**

NCC MUSEUM of Cambridge Glass is located on U.S. Route 40, 1 8 mile east of I-77 near Cambridge. Hours: 12 noon to 4 PM - Wednesday thru Sunday. (March thru October)

PLEASE NOTIFY US IMMEDIATELY OF ANY CHANGE IN YOUR ADDRESS  
 Please enclose a SASE when requesting information

# CAMBRIDGE GLASS BOOKS FOR SALE

by National Cambridge Collectors, Inc.

\* **COLORS IN CAMBRIDGE GLASS**  
 (128 pages - 60 color plates - fully indexed)  
 Hardbound with Price Guide \$19.95

\* **1930-34 CAMBRIDGE GLASS CO. CATALOG REPRINT**  
 (250 page reprint of original catalog)  
 Hardbound with Price Guide \$14.95

\* **1949-53 CAMBRIDGE GLASS CO. CATALOG REPRINT**  
 (300 page reprint of original catalog)  
 Hardbound with Price Guide \$14.95

\* **1956-58 CAMBRIDGE GLASS CO. CATALOG REPRINT**  
 (164 page reprint of original catalog)  
 Paperback \$6.95

## 1985 COMBINED PRICE GUIDE

for 1930-34 & 1949-53 catalog reprints Postpaid \$5.75

\*NCC MEMBERS ONLY: *These publications are available at 10% discount - or all four (4) at one time for \$50.00.*

by Bill & Phyllis Smith

**CAMBRIDGE GLASS 1927-1929**  
 (66 page reprint of original catalog)  
 Paperback with Identification Guide \$7.95

by Mark Nye

**CAMBRIDGE STEMWARE**  
 (95 Stemware lines with 107 illustrations)  
 Paperback \$14.95

by Cambridge Buffs Study Group

**NEARCUT**  
 (108 page reprint of 1910 Cambridge Catalog)  
 Paperback with Price Guide \$9.95

by Mary, Lyle and Lynn Welker

**CAMBRIDGE GLASS CO.**  
 (120 pages of reprint from 8 old catalogs)  
 Paperback \$6.95

**CAMBRIDGE GLASS CO. BOOK II**  
 (119 pages of reprint from old catalogs)  
 Paperback \$6.95

**CAMBRIDGE, OHIO GLASS IN COLOR II**  
 Spiralbound \$5.95

by Harold and Judy Bennett

**1903 CAMBRIDGE GLASS CO. CATALOG REPRINT**  
 (106 page reprint of an original catalog)  
 Paperback \$7.50

Address your orders to:

**BOOKS**  
 National Cambridge Collectors, Inc.  
 P.O. Box 416  
 Cambridge, OH 43725



Please add \$1.00 (P & I) per order.  
 (Not required for Price Guide)  
 Ohio residents please add 6% state sales tax.

**DEALER DISCOUNTS AVAILABLE - PLEASE WRITE!**



## THOUGHTS from your President . . .

First of all, I think it stinks when you have to spend the most beautiful time of the year confined to a hospital bed. The leaves were just beginning to turn to all the beautiful hues on September 26th when I made my trip to the hospital. I figured that on my return trip home, in about a week, everything would be so beautiful. After all, my doctor had practically assured me that the third time (third back operation) would be a charm. So far it has been a disaster. Two weeks later, I am still confined to bed in the hospital and all I can see from my window are a few scraggly trees on the Ohio side of the river.

If everything goes right in the next week, I should be home -- only to be confined to bed for another month. If things don't go right, I'm going to take a zipper with me into surgery and insist that they install it to save time later on! I've already teased my doctor about this. Hopefully everything will be alright and it won't be necessary. Believe me, this time, I am going to listen to my doctor during recovery!

Probably the worst part of this whole thing is that I had to miss the November 8th Quarterly meeting. My wife Norma attended and called me this morning to tell me about it. She said they had a wonderful meal, great Program and Show & Tell. Members attending picked up their Eagle bookends and were quite pleased with them. There are still some left to be sold at \$30 (see order form on page 13). If you are interested in one I wouldn't wait too long to order. There are several non members interested in these items. There are also members who were only allowed to buy one because of single membership who are ordering after the November 8th deadline so that they can have a pair. There were only 200 made, so you know they won't last long.

Don't forget to look closely at the "N.C.C. Christmas Shopping List" (page 13). Do your shopping by mail. It will really help the club! Don't overlook the possibility of giving a book on Cambridge Glass this year. They are all listed on page 2. Buy one for a friend, or be good to yourself and order that book you've been wanting, but just keep putting off. You never can have too many books! Of course a really good "year 'round" gift is N.C.C. Membership. An application blank is on page 20, but you don't need to tear it out -- just list the name and address of your friends on a sheet of paper and send it along with your check. It's not too late -- we'll send their membership card in a Christmas card from you.

I think I finished up all of my "Thank You" letters before I came to the hospital. If anyone has donated anything during the year -- glass, money, or whatever -- and hasn't received a letter for tax purposes, please let me know. I hurried to get them finished and probably made some mistakes.

Here comes another needle. Oh well, I'll have time to finish this because they will have to spend 15 minutes trying to find a place they haven't stuck me yet.

Have a Joyous and safe Holiday Season.  
Merry Christmas and a Happy and Prosperous New Year to all of You!

WILLARD

# BLOWN CANDY BOXES

by MARK A. NYE

In anticipation of the upcoming holidays, I thought this would be a good time to take a look at some appropriate candy containers. May I suggest that any of the items described in the following paragraphs would make a most suitable gift and a Cambridge Blown Candy Box filled with homemade chocolate fudge would indeed be a fine and long remembered gift.

This article will deal first with the seven blown candy boxes shown in the 1940 Cambridge catalog. In addition, several blown comports shown in this same catalog (see page 6) will also be discussed since it would have been a simple task to place a lid on any or all of them and presto, a blown candy box with lid! While we have no indication that, for this particular group of blown comports, it was ever done by Cambridge, such does remain within the realm of possibility.

With two exceptions, a dimension of 5 3/8" is given for the blown candy boxes. This refers to the diameter of the box (or bowl since they are all round) and does not indicate height. There are tall and low versions of most styles, the only difference being in the height of the stem. In those instances where there are boxes in color as well as crystal, both the box and the lid will be in color while, with one exception, the stem and foot will be in crystal.

Please note before going any further the original 1940 catalog page, (reprinted here on page 5) has two of the candy boxes incorrectly identified. In the upper left corner, the box captioned as #3600/3 is really the #3500/103 or Gadroon candy while the box shown on the right side of the middle row is the #3600/3, not the #3500/103.

The Gadroon line first appeared in the 1933 catalog supplement and while neither the #3500/101 comport, from which the Gadroon blown candy box is made, nor the candy box itself were shown at that time, it is entirely possible at least the comport was in the line from the very beginning. The first reference for the #3500/101 comport dates to 1935 when it appeared on catalog pages issued that year. Some three years later, 1938, this particular Gadroon comport was available engraved Adonis and Croseus but so far, no

reference to an Adonis or Croseus candy box has been found. In the fall of 1939, the Gadroon candy box was listed as being etched Valencia, Minerva, Rosepoint, Elaine, Diane, Portia and Wildflower on crystal blanks. Undoubtedly, most if not all had been available for sometime. The 1940 price list had this box available with the Diane, Elaine, Portia, Rosepoint and Wildflower etchings. The #3500 line is one of the instances where there is only one blown candy box in the line, there being no low version.

When discussing the Gadroon #3500/101 comport, be sure to identify it by number as there are several other Gadroon comports, each of which have their own item number, not to mention a distinctly different appearance. These other comports were never used for candy boxes.

All available evidence supports a 1938 introduction for the #3600 line of stemware and it is reasonable to assume the comports and candy boxes would have been brought out at the same time. As shown on the catalog page, there are both tall and low versions of the #3600 candy box and each was made plain in addition to being etched Blossom Time and Chantilly. All indications are these particular candy boxes were not made in color.

Gyro Optic was also introduced in 1938, at approximately mid-year, and like the #3600 line, there is no reason to suspect the candy box was not brought out at the same time or shortly thereafter. This box was not further decorated since the optic pattern does not lend itself to etching or other types of decorations. The #3143/19 or Gyro Optic candy box and cover was made in color - mocha and moonlight, as well as crystal. Unlike the other blown candy boxes, this is an instance where the stem and foot will be the same color as the box and lid.

The #3121/3 candy box and cover (tall) was probably in production by the mid-1930s and definitely by 1936-37. An example of the #3121/3 candy box etched Apple Blossom is known to this author and the existence of this piece indicates a relatively early introduction date for the candy box. When the low version, #3121/4 was introduced is not known at this time but we do know that it was in production

continued on page 7





## BLOWN CANDY BOXES



3600/3—5<sup>3</sup>/<sub>8</sub> in.  
Tall Candy Box & Cover (blown)



3600/4—5<sup>3</sup>/<sub>8</sub> in.  
Low Candy Box & Cover (blown)



No. 3143/19—5<sup>3</sup>/<sub>8</sub> in.  
Candy Box & Cover



3121/3—5<sup>3</sup>/<sub>8</sub> in. Candy Box  
and Cover (Tall)



No. 3500/103—5<sup>3</sup>/<sub>8</sub> in.  
Candy Box and Cover (Blown)



3121/4—5<sup>3</sup>/<sub>8</sub> in. Candy Box  
and Cover (Low)



1066/4—5<sup>3</sup>/<sub>8</sub> in. Candy Box  
and Cover (Low)

JANUARY 1, 1940



BLOWN COMPORTS



3600/2—5 3/8 in.  
Low Comport (blown)



3114/2—6 in.  
Low Comport



3111—5 3/8 in.  
Low Comport



3121/2—5 3/8 in.  
Comport (Low)



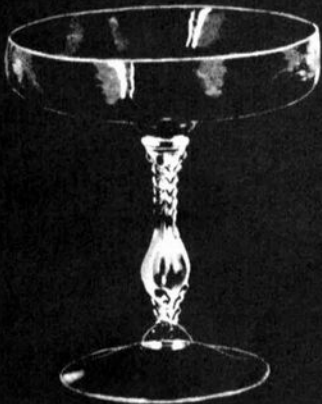
1066—5 3/8 in.  
Low Comport



3143/18—5 3/8 in.  
Comport



3600/1—5 3/8 in.  
Tall Comport (blown)



3121/1—5 3/8 in.  
Tall Comport



3500/101—5 3/8 in.  
Comport (Tall)



3114/1—6 in.  
Tall Comport



3122—5 3/8 in.  
Comport (Tall)

JANUARY 1, 1940

by the beginning of 1939. In the fall of 1939 both styles, tall and low, were being offered to the consumer etched Diane, Portia, Elaine, Rosepoint and Wildflower, plain and gold encrusted; Elaine, Rosepoint and Wildflower also being available with a gold edge. At this time two other etchings were also being used to decorate #3121 candy boxes, namely Minerva and Valencia; these however in the late 1930s were being offered plain only, no gold enhancement. With the advent of the 1940s, the #3121 candy boxes remained available with these same etchings with the exception of Minerva and Valencia. While the etchings were placed only on crystal #3121 blown candy boxes, both styles were also made in amber.

Apparently made only in what was referred to as the low style, the #1066/4 candy box and cover nonetheless did utilize the complete #1066 stem which in itself is a short stem. The basis for the #1066 blown candy box, the #1066 low comport, was shown in the 1933 catalog supplement, but exactly when the lid was added to make a candy box has not yet been determined. The first known reference is dated 1939 but certainly they were in production before then.

In the late 1930s the #1066 comport was being made in crystal, amber, emerald, dianthus pink, moonlight, amethyst, royal blue and forest green. The candy box and cover, however, as far as is known at this time, were only available in crystal, amber and royal blue.

The crystal #1066/4 candy box was sold plain as well as etched during the mid-to-late 1930s and on into the 1940s. Etchings to be found on this candy box are Diane, Portia, Valencia, Elaine, Minerva, Rosepoint and Wildflower. Valencia and Minerva etched pieces will, of course, date to pre-1940 as these two etchings were discontinued in 1939.

The only one of the blown candy boxes to make it into the 1950s, the #1066/4 was missing from the original 1949 Cambridge catalog, but it did reappear in the September 1950 price list as well as on a supplement catalog page. In the fall of 1950, it was being offered in crystal, amber, amethyst, emerald (dark), mandarin gold and carmen. By the fall of 1953 only the crystal version remained in the Cambridge line and when the plant reopened, fol-

lowing the 1954 closing, it too had passed into history.

On the catalog page following the blown candy boxes, eleven blown comports were shown, seven of which had appeared on the previous page as the basis of the blown candy boxes. As said earlier, there is nothing in the design of the remaining four blown comports that would have prevented them from having been used, with the addition of a lid, by Cambridge as candy boxes. Even today, such a piece could result from a "marriage" of a lid and comport and it would be hard to say it is not an authentic item.

From the #3114 stemware line we have two comports, the #3114/2 low comport and the #3114/1 tall comport, both of which are described as 6" comports, again, referring to the diameter of the bowl, not the height. Introduced in 1936, the #3114 line was discontinued in the mid-1940s and indications are the comports as well fell victim to the war. This line was made only in crystal and did not carry an optic pattern on the bowl.

The third comport in this group derives from the #3111 stemware line and is known as the #3111 5 3/8" low comport. The #3111 stemware was brought out ca 1932 and remained in the Cambridge catalog until 1952; however, the comport was not one of the items being made in the final years of this stemware line. While the stemware is known in several colors, it is not known if prior to 1940 the comport was also made in color; however beginning in 1940, production of the comport was limited to crystal.

The #3122 5 3/8" comport (tall), is the comport most likely to have been utilized as part of a covered candy box. The #3122 line of stemware was introduced in the summer or fall of 1931 and remained in the Cambridge line until the initial plant closing in 1954. The comport, however, was discontinued sometime prior to 1949. Existing company records indicate the #3122 comport was made in crystal, amber and royal blue during the late 1930s and in 1940 was available in these same colors plus carmen. #3122 blown candy boxes in crystal, amber and royal blue would not be a surprise and chances are they were probably made at some point; however, at this time their existence is purely supposition.

**Best Wishes for the Holiday Season & may one  
& all have a Happy and Prosperous New Year!**



# 1987 CONVENTION

## June 26, 27, & 28

by MARK A. NYE  
NCC CONVENTION CHAIRMAN

Here it is not even Christmas 1986 and probably the last thing on your mind is a Summer 1987 happening. However, it is not too early to make preliminary plans to attend next year's convention. Because of the attention to details required to ensure a successful convention, plans for the 1987 Convention have been underway since shortly after the conclusion of the June 1986 convention. In the coming months, as arrangements for the convention are finalized, I will be passing this information along to you. At this point, very little has been finalized except for location and theme.

During the past several years, there has been much talk, and at times serious discussion, about moving our convention from the Shenandoah Inn. I don't think I need to go into the reasons why such a move was proposed. Polls regarding members' preference for a move were taken and unfortunately, there was never an overwhelming majority for either a move, or to stay put. This same division of opinion has also been found amongst your Board of Directors.

For those of you unfamiliar with the Cambridge area, there is, unfortunately, a very limited choice of sites, none of which are entirely satisfactory. Over the years we have outgrown most of the available locations, including the Cambridge Holiday Inn.

The number of places that come close to meeting our requirements for a showroom and banquet facilities are two, the Shenandoah and the Salt Fork Lodge. Salt Fork Lodge is located some 15 miles from Cambridge, further out than the Shenandoah, and while the facilities are unquestionably better, room rates reflect this, in the range \$54-62 per night, as do the catering charges.

To come directly to the point, the decision has been made to hold the 1987 N.C.C., Inc. Convention at the Shenandoah Inn. Deciding on the location was not an easy decision to make, but one that had to be made early on and so it was. In addition to reasons already

presented, other factors entering into the decision was the not so satisfactory layout of the show that would have been required at Salt Fork, including the use of two rooms and difficulty in securing the area after hours, the distance from the club museum and the Saturday Flea Market. Had we opt for Salt Fork, an increase in convention fees would have been required since food costs would have been higher. Also, members staying at the Salt Fork Lodge would have been required to make room deposits, something the Shenandoah does not require, tying up money for several months prior to the convention.

We have been talking with the Shenandoah management about making some improvements and the prospects look good in some areas. While I cannot promise a wholesale remodeling, the more objectionable aspects will be addressed.

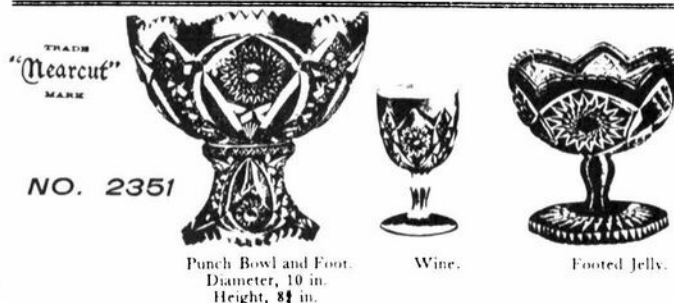
As it stands now, an increase in convention fees should not be required but this cannot be determined until late winter when the food functions are finalized. If there is a change, it will probably result from replacing the Saturday morning continental breakfast with a buffet or served meal. If an increase is required, costs will still be below what was projected at the alternate site.

The theme for the 1987 Convention will be:

### CAMBRIDGE - THE NEARCUT YEARS

Many people have suggested Nearcut as a topic for articles and convention talks and it is an aspect of Cambridge that remains to be fully explored. Hence, the decision to emphasize it at next year's convention. We will be needing examples of Nearcut era wares for the display room and if any member would be willing to present a program on any topic related to Nearcut era glassware, please let me know as soon as possible. This is your convention and thru your help it can be the best one ever.

Think Nearcut! Cambridge or Bust June 1987!





# THE DAILY JEFFERSONIAN

## Cambridge History From News Articles

---

by CHARLES A. UPTON

---

(EDITOR'S NOTE: This is the tenth in a series of Historical articles which began in the February 1986 issue of the Cambridge CRYSTAL BALL. This series was deleted from the November 1986 issue for lack of space.)

---

### "MAY START THE BYESVILLE PLANT"

The Daily Jeffersonian, Cambridge, Ohio.

Thursday, February 17, 1910 . . . Citizens of Byesville are rejoicing over the prospects of the Byesville Glass Plant being started in full by President A.J. Bennett, of the Cambridge Glass Plant. A citizen of Byesville, who was in Cambridge Thursday afternoon, stated that providing the citizens of his town and President Bennett could agree on a proposition, now under consideration, the plant at Byesville, which has been idle for a number of years would resume operations in full about March 1st. Just what the proposition is he declined to say, but thought that everything would be settled satisfactorily in the next few days.

Some time ago President Bennett was considering the matter of starting the Byesville plant in order to take care of some of the local work, but at that time the Ohio Fuel Supply Co. informed him that it could not furnish the necessary gas. Since that time, however, the company has secured a greater supply and there is no doubt now but that this can be adjusted. A representative of the Cambridge Glass Plant stated Thursday that the operation of the Byesville plant would be a great help in taking care of some of the work, as the Cambridge plant had more than it could handle.

#####

---

**THE BYESVILLE GLASS PLANT TO START AT ONCE. CITIZENS START TO AID IN REPAIRS. PRES. BENNETT WILL OPERATE IT WITH CAMBRIDGE PLANT."**

The Daily Jeffersonian, Cambridge, Ohio.

Thursday, February 24, 1910 . . . Byesville, Feb. 24. — After a period of idleness covering three years, the Byesville glass plant is to

start in full and will be operated by President A.J. Bennett, of the Cambridge Glass Co. This was decided last night at an enthusiastic meeting of citizens held in Anderson Hall, when the proposition made by Mr. Bennett was accepted and a committee started out with subscription papers.

Mr. Bennett did not ask for a bonus — his proposition in brief was that if Byesville would raise a sum to help repair the buildings and furnace, he would operate the plant, and this means employment for at least 125 men at good wages. He already has control of the plant, but during its period of idleness it necessarily got out of repair.

### Will start Monday

The committee, composed of Messrs. E.S. Blake, B.V. Witten, Milton Hall, S.W. Morris and A.J. True report this morning that they are meeting with splendid success and expect to have the money in hand so that repairs will begin Monday morning. The confidence in Mr. Bennett and the fact that he will manufacture the same ware that is being made in Cambridge, and so successfully marketed over the world, convinces all that this is one of the best propositions Byesville has ever accepted.

When Mr. Bennett was interviewed today, he stated that he was ready to begin repairs on the Byesville plant as soon as the citizens were ready to proceed, according to the proposition, and that within thirty days from the time they begin such work, glass would be turning out at the plant. He will transfer certain lines there, and this will permit the local plant to turn out more work and the company to catch up with the steady stream of orders. Byesville is to be congratulated on this movement, as The Cambridge Glass Co. has been a valuable factor in building up this city and this plan will prove of equal benefit in our neighboring city.

#####

---

### "CONFIDENT OF RAISING FUNDS"

The Daily Jeffersonian, Cambridge, Ohio.

Thursday, March 2, 1910 . . . C.S. Gage of the committee appointed by Byesville citizens to raise a fund of \$3,000 with which to secure

continued on next page

the operation of the Byesville Glass Plant, was in the city Thursday. Mr. Gage stated that at a meeting of the soliciting committee Wednesday evening reports showed that \$2,500 of the required amount had been raised and he was instructed to come to Cambridge Thursday to secure, if possible, the remaining \$500 from the business firms which have extensive business dealings with citizens of Byesville. Mr. Gage expressed himself as confident that the committee will be successful and that within a few days after the money is raised President Bennett of the Cambridge Glass Plant will have the Byesville plant in full operation.

By the terms of the agreement between President Bennett and the Byesville citizens the money should have been raised by last Saturday night but this was impossible and at the request of the citizens, President Bennett extended the time until Saturday evening of this week.

#####

---

**"RESOLUTIONS TO PRES. A.J. BENNETT"**

The Daily Jeffersonian, Cambridge, Ohio.

**Thursday, March 3, 1910 . . .** The following resolutions accompanying a letter in accordance with a standing vote of the members on Sunday, Feb. 27th, after the dedication service of the communion set, which was secured for the church through his benefaction, were forwarded to the donor through the pastor, by request.

Whereas, through the kindness of President A.J. Bennett in donating certain articles to a member of the A.M.E. Church, the members were privileged to enjoy the uses of the individual communion set on the above date, at the quarterly meeting service and

Whereas, this act of kindness from Mr. Bennett is a demonstration of his consideration and sympathy for us as a section of Christ's church that is striving along with others for the advancement of Christ's kingdom and the uplift of humanity.

Resolved that the thanks of the entire membership of the church are sincerely and gratefully tendered to Mr. Bennett for his kindness and pray God's blessing upon himself and family, and be it further

Resolved; That the presiding elder and pastor participate in said Thanks and appreciation with the members in behalf of the church.

J.B. Harewood, Pastor

#####

---

**"OPERATION OF THE BYESVILLE PLANT ASSURED"**

The Daily Jeffersonian, Cambridge, Ohio.

**Thursday, March 10, 1910 . . .** The Byesville Glass Plant will resume operations in full, under the management of President A.J. Bennett of the Cambridge Glass Plant, as soon as the necessary repairs on the building and the large furnace can be made. This announcement was made in Byesville and Cambridge Wednesday afternoon.

For the past four weeks the committee of Byesville citizens have been busy circulating subscription papers in their efforts to collect \$3,000 and late Wednesday afternoon a member of the committee announced that they had secured pledges for the entire amount. President Bennett accompanied by M.L. Hartley of this city were in Byesville Tuesday afternoon, inspecting the buildings, the latter making an estimate of the cost of repairs on the roof of the main buildings.

President Bennett stated Thursday afternoon that if possible the repairs would be started next Monday and that as soon as they were completed the plant would be placed in full operation.

He said he thought it would take at least five weeks to complete these repairs.

The operation of the plant at Byesville, as a branch of the Cambridge works, will mean that a number of employees in the office of the local plant will be promoted as it will require a full office force at Byesville. It will also mean employment for a great many citizens of Byesville.

#####

---

**"BEGIN REPAIRS ON BYESVILLE PLANT"**

The Daily Jeffersonian, Cambridge, Ohio.

**Monday, March 14, 1910 . . .** The work of making the repairs on the buildings and grounds of the Byesville glass plant was started Monday morning under the direction of John Hamilton, who has a large force of men at work with instructions to push it forward as rapidly as possible. The contract for repairing the roofs of the buildings will be awarded to M.L. Hartley of this city. It is expected that it will require about five weeks to make the necessary repairs.

#####

---

**Thought for the Day**

I will honor Christmas in my heart, and try to keep it all year.

## Duncan & Miller Research Reveals a Treasure Trove by George A. Fogg

From Vol. XLIII, No. 18, June 4, 1931 of The Pottery, Glass & Brass Salesman, under the column "Buyin Chicago," the following article:

"Cambridge Glass Co.

Two New Iced-Tea Sets That Look Like Quality Merchandise.

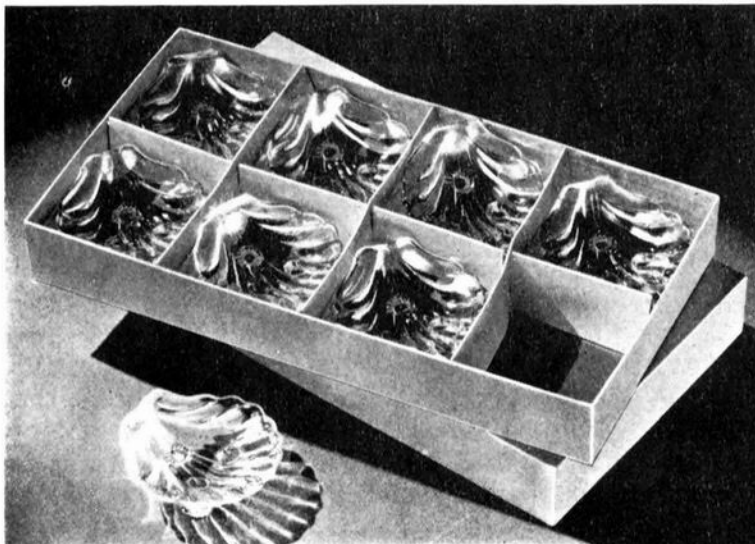
Two new iced-tea sets are being shown in the Merchandise Mart display rooms of the Cambridge Glass Company, Cambridge, Ohio. the sets have received unusually skillful treatment and are distinctly 'quality' merchandise. For those who have sought for some of the beauty of higher priced glassware in such sets, which are frequently regarded as too temporary or seasonal for high-grade workmanship, the new Cambridge sets will prove a happy solution of their difficulties.

The sets come in two shapes in both plain and etched glass. The etchings are unusually attractive and are as appropriate to the dining room as to the summer porch. One of the sets comes in a ball shape placed on a base, after the manner of an ivy ball. The tilted position of the pitcher permits the placing of the handle in a position immediately over the center of gravity, thus enabling the lifting of the pitcher with the greatest ease.

The other set is designed with the lower half of the pitcher of considerably larger diameter than the upper half. an important feature of both pitchers is the clever ice-retaining lip, which enables the free pouring of the pitchers contents without the nuisance of having the ice leave the pitcher with a disastrous splash.

Another feature of the sets is the exact matching of shapes of the pitchers and tumblers. The sets come in plain or etched glass and in crystal, green, rose, amber and a beautiful shade of cobalt blue."

This article is an interesting bit/ Note how the colors are stated. To peak your interest watch for future color quotes from The pottery, Glass & Brass Salesman and see what happens.



CHINA, GLASS and LAMPS  
January 1941



**S**OLD in gift boxes of eight, this new "Shell" ash tray group from the Cambridge Glass Co. offers an interesting unit for late Winter and Spring merchandising. The ash trays are featured in various colors — two each of Pistachio, Mocha, Moonlight, and La Rosa.



---

---

# Club News

---

---

National Cambridge Collectors, Inc.  
Quarterly Meeting  
November 8, 1986  
Elks Club, Cambridge, Ohio

The meeting was called to order at 7:45 p.m. by Vice-President Mark Nye. In attendance were eight Board members and 48 members.

The minutes of the previous meeting held on August 23, 1986 were read by Janice Hughes and approved.

The Treasurers report was given by Bill Smith showing the Money Market to be \$14,491.64 and the checking balance \$2,534.33. He reported we did not pay off the mortgage on the Service building as reported at the last meeting, but paid \$4,000. The mortgage holder reduced the interest on the balance from 11% to 7½%. He asked if anyone knew a CPA in the organization to let him know as our auditor has resigned.

## COMMITTEE REPORTS

**CONVENTION:** Chairman Mark Nye reported the 1987 Convention will be at Shenandoah Inn. The manager has promised changes, such as new paint, curtains, lights, etc. Salt Fork Lodge was not feasible because of multiple rooms for the show and possible security problems. He reported the theme will be "Cambridge, The Near Cut Years." The activities will start with seminars on Thursday and a reception in the evening. He asked for suggestions regarding programs and speakers.

**MEMBERSHIP:** Chairman Phyllis Smith reported we now have 1236 members. She reported an unusual drop in September.

**PROJECTS:** Bill Smith reported sales of the Eagle bookend are good and we are about to break even. Sales of the Museum Inventory items are doing well.

**PUBLICITY:** Bill Smith reported Joe Andrejcek has placed all the free publicity and the Auction ads will be out soon.

**MUSEUM:** Chairman Bill Harbaugh reported the Museum is closed for the winter. Janice

Hughes reported 734 people visited the Museum this year.

**AUCTION:** Chairman Lynn Welker stated consignments are closed and the Auction list will be in the January CRYSTAL BALL.

**NOMINATING COMMITTEE:** Vice-President Nye announced the nominating committee as follows: Vicki Wollenhaupt, Dayton, Ohio; Barbara Harbaugh, Senecaville, Ohio; Charles Moorehead, Cambridge, Ohio; and Bill Smith, Springfield, Ohio, Chairman.

**FLEA MARKET:** Chairman Marybelle Moorehead reported the location has been reserved and the contracts will be sent the first of the year.

**PUBLIC RELATIONS:** Bill Smith reported they attended the Dearborn Michigan Show and acquired several new members. They may be attending the 20-30-40 Show in Chicago in March and possibly Florida in February. Mark Nye will represent NCC at the Sanford Florida show in January.

**OLD BUSINESS:** Bill Smith read a letter from Doyle and J.D. Hanes with a monetary donation in memory of Mrs. Hanes. He also reported several monetary donations have been made in memory of Mark Schliesmann.

**NEW BUSINESS:** Drew Davis reported at a show recently he heard of a lot of "new Caprice" on the market. He asked NCC to find out what molds are being used and report to members.

A motion was made by Frank Wollenhaupt to adjourn at 8:10 p.m.

JANICE HUGHES, Secretary

---

---

## Study Club News

---

---

We have a space problem again this month, so we will have a short, combined Study Group report and a promise of more later. Group #6, the New York "Fingerlakes"; #7 the Cambridge, Ohio "Bufs"; #8 the Michigan "Caprices"; and #10 the Long Island, New York "Tuscan Crowns" all report that they are holding meetings -- the Tuscan Crowns held a Show, the Bufs had a factory worker speak to them -- and everybody found Cambridge glass . . . . . more next month!!

# N. C. C. CHRISTMAS SHOPPING SUGGESTIONS

Earliest postmarks will determine lucky purchasers in cases of insufficient quantities.

## BOOKENDS

- #1129 LION, Amber, Second of the Museum Reissue Series,.....(ea)...\$38.00  
(Add \$3.00 P. & H. - Ohio residents add \$2.09 tax)
- #1129 LION, Amber Frosted, Special Treatment Item,.....(ea)...\$75.00  
(Add \$3.00 P. & H. - Ohio residents add \$4.13 tax)
- #1128 SCOTTY, Black Frosted, Third of the Museum Reissue Series,.....(ea)...\$30.00  
(Add \$3.00 P. & H. - Ohio residents add \$1.65 tax)
- #1119 EAGLE, Cobalt Blue, Fourth in the Reissue Series,.....(ea)...\$30.00  
(Add \$3.00 P. & H. - Ohio residents add \$1.65 tax)

## CONVENTION FAVORS

### Paperweights

- 1979 - Amber with Club Logo and Date..(limited quantity).....(ea)...\$16.00  
(Add \$1.50 P. & H. - Ohio residents add \$.88 tax)
- 1980 - Windsor Blue with Club Logo and Date.....(ea)...\$16.00  
(Add \$1.50 P. & H. - Ohio residents add \$.88 tax)
- 1981 - Tomato with Club Logo (not dated).....(ea)...\$75.00  
(Add \$1.50 P. & H. - Ohio residents add \$4.13 tax)
- 1982 - Gold Krystol with Club Logo and Date.....(ea)...\$14.00  
(Add \$1.50 P. & H. - Ohio residents add \$.77 tax)

### Georgian Tumblers, 2½ oz.

- 1983 - Cobalt Blue, Marked "10th Anniversary - 1973 N.C.C. - 1983"...(ea)...\$18.00  
(Add \$1.50 P. & H. - Ohio residents add \$.99 tax)
- 1984 - Pink, Marked "N. C. C." no date.....(ea)...\$12.00  
(Add \$1.50 P. & H. - Ohio residents add \$.66 tax)
- 1985 - Amber, with Club Logo and Date.....(ea)...\$14.00  
(Add \$1.50 P. & H. - Ohio residents add \$.77 tax)
- 1986 - Gold Krystol, with Club Logo and Date.....(ea)...\$14.00  
(Add \$1.50 P. & H. - Ohio residents add \$.77 tax)

## CUP PLATES

- Crystal (limited number); Cobalt Blue (limited number); Amethyst; Teal (ea)..\$7.00  
(Add \$1.00 P. & H. - Ohio residents add \$.39 tax)

## CAMBRIDGE GLASS COMPANY STOCK CERTIFICATES

- These are original certificates suitable for framing.....(ea)..\$5.00  
(Price includes mailing - Ohio residents add \$.28 tax)

See BOOK LIST on page 2 for additional suggestions

National Cambridge Collectors, Inc.  
P.O. Box 416  
Cambridge, OH 43725





*Wishing special joy  
for you  
At Christmas time  
and all year through.*

**Taste of Honey**  
GLASSWARE — COLLECTIBLES



CLARKE & CAROLE WEST

3433 Turner Drive  
Springfield, OH 45504

## For the Cambridge Collector who has everything (?)

(So, maybe you couldn't afford the Japonica vase—you can afford this!)

Wish a Merry Christmas to your favorite Cambridge collector with a 50%-50% poly/cotton T-shirt with crew neck. Cambridge gold with black silk screened logo. Adult sizes only (S, M, L, XL). Quantities are limited, so hurry! **\$10.00** includes shipping and handling.

Please send S  M  L  XL

\_\_\_\_\_ shirts × \$10.00 = \$ \_\_\_\_\_  
amount enclosed

Make check payable to **Study Group No. 11**  
and mail to P.O. Box 357  
Western Springs, IL 60558

Name \_\_\_\_\_

Address \_\_\_\_\_  
(NO P.O. Box #s)

City, State & Zip \_\_\_\_\_

Allow 4 weeks for delivery. Project financed by NCC Study Group No. 11. All proceeds to benefit NCC MUSEUM

## — Classified —

**BUYING:** Caprice blue or Rosepoint by Cambridge. Rose or Orchid by Heisey. American, June, Fairfax, Versailles, Trojan by Fostoria. Also Depression Glass and all crystal or colored of that era. **Nadine Pankow**, 207 S. Oakwood, Willow Springs, IL 60480. 312/839-5231.

**NEEDED:** Cambridge Arms Parts. Epergne and Peg Vases, Pedestals, etc. **Penny Bernhardt**, 4463 Elm Ave., Long Beach, CA 90807. 213/423-7218.

**FOR SALE:** 600 piece Collection of Cambridge Rosepoint crystal - #3400, #3121, #3500, #3900 and more. Will sale 1 item or 12 items. For list write to: **Dorothy Godbey**, 117 Hearthstone Dr., Fayetteville, NC 28304. 919/867-8922.

**FOR SALE:** Mandarin Gold 8 1/2" Draped Lady \$150. Pink 11" Swan, rough mold, no chips \$200. I match crystal. Write specific wants with SASE. **Crystal Matching Service**, Route #2, Box 58, Kenyon, MN 55946. 507/789-5837.



*Have a very happy Holiday*

### SHOWCASE ANTIQUE and GIFT SHOP

**EVELYN M. ALLEN**

1263 HEBRON RD. (Rt. 79), HEATH, OH 43056  
614/522-1785

**HOURS: 12:30 to 5 PM DAILY**  
(Closed Monday)

BUYING and SELLING CAMBRIDGE HEISEY  
FOSTORIA FENTON & OTHER AMERICAN  
MADE GLASS & POTTERY  
NEW GIFT ITEMS

Other hours by Appointment Home Phone 614 522-1635





## THE MIAMI DEPRESSION ERA GLASS SHOW

**Saturday,  
February 7th, 1987**  
from 10:00 am to 5:00 pm

**Sunday,  
February 8th, 1987**  
from 12:00 noon to 5:00 pm

One of the most important  
and popular antiques events  
in Florida

featuring  
CAMBRIDGE, FOSTORIA, HEISEY,  
ART DECO AND OTHER  
DEPRESSION ERA GLASSWARE  
AS WELL AS CHINA AND POTTERY  
OF THE TIMES.

**North Miami  
National Guard Armory**  
13250 N.E. 8th Avenue  
North Miami, Florida

**SPECIAL GUEST**  
Nora Koch, editor, the DAZE

**DIRECTIONS:**  
From I-95, exit at 135th Street and  
go east to N.E. 8th Avenue.  
Turn right on N.E. 8th Avenue  
and proceed to Armory.

Sponsored by the  
South Florida  
Depression Glass Club

**INFORMATION:**  
(305) 448-5568

A  
gathering of  
select  
dealers  
from 15  
states  
with quality  
items to  
intrigue the  
beginner,  
service the  
collector,  
and cater to  
the  
connoisseur

snack bar  
door prize  
American  
glassware  
& crystal  
matching  
and  
identification

Admission  
\$2.50  
(good both  
days)



# Ray Talbot & Bob Riley

P.O. BOX 4180, SPRINGFIELD, MA 01101  
Phone: 413/737-8004 - 8 am to 11 am & 8 pm to 11 pm EST

## CARMEN

#1066 7" Ivy Ball .....	\$ 45
#3400/1182 6" Basket, signed .....	15
#759 7" Plate .....	10
#647 2-lite Candlestick .....	40
Georgian low Sherbet .....	15
Georgian tall Sherbet .....	15

## EBONY

#16 7 1/2" Bowl, signed, minor wear .....	\$ 10
#1070 36 oz. Pinch Decanter no stopper .....	12
#3400/48 13" crimped Bowl .....	20
#97 3-compt. covered Candy with pearl lustre & seaweed decor. (gold worn on knob) .....	30

## CRYSTAL

Caprice #345 5 1/2" Vase .....	\$ 15
Caprice #38 Sugar .....	5
Chelsea 7" low ftd. Comport .....	12
#647 2-lite Candlesticks (pr.) ....	20
22 oz. Cat Bottle .....	15
#3 5" Star Candlesticks (pr.) ....	15
Leaf Line #1211 double Candelabrum.	40
#646 5" Candlesticks w/bobeche & prisms, etched Rosepoint (pair) .....	80

## DARK GREEN

#1402/100 6" Comport (forest) .....	\$ 20
#3400/67 12 Celery/Relish w/Apple Blossom etch (emerald) .....	45
#1550 Sweet Potato Vase (forest) ..	15
SS33 4" Ashtray (forest) .....	12

## MANDARIN GOLD

SS31 8" oval Dish .....	\$ 35
SS33 4" Ashtray .....	12
#1057 1/2, 14 oz. Weiss Beer (2) each .....	20

## CROWN TUSCAN

#1236 7" Ivy Ball .....	\$ 45
SS31 8" oval Dish .....	37
SS33 4" Ashtray (4) each .....	15
SS21 6" ftd. Candy & cover .....	50

## AMBER

#3500/49 5" Nappy .....	\$ 7
#3500/55 6" Basket .....	8
#3500/68 2-compt. 5 1/2" Relish .....	7
#3500/69 3-compt. 6 1/2" Relish, w/Farber base .....	9
#3500/70 4-compt. 7 1/2" Relish, w/Farber base .....	9
#3500/652 11" Celery, signed & etched Diane .....	40
#3126 10 oz. ftd. Tumbler .....	9
#3126 9 oz. Goblet (4) each .....	9
#3126 7 oz. low Sherbet (3) each .....	7
#652 11" Celery, signed .....	10
#397 5-compt. Celery/Relish Tray.....	20
Wetherford #102 12" Celery w/line etch .....	12
#805 Syrup & cover (fleck inside rim) .....	15
#676 11 1/2" Bowl, signed .....	10
#16 7 1/2" Bowl, signed .....	8
#1550 Sweet Potato Vase .....	15
#3400/68 Sugar, signed .....	7
#47 6 3/4" Comport .....	8
#87 1/2 lb. Candy, optic .....	10
#88 1 lb. Candy, optic .....	12
#1236 Ivy Ball (minor lip roughness) .....	30
8" Cocktail Shaker (no lid), signed .....	10
#1239 14" Vase .....	45
#925 After-Dinner Cups & Saucers, set of 4, signed .....	60
Farber Nude Stem 5 3/4" Comport..	25

continued on next page

# Ray Talbot & Bob Riley

## AMBER

<u>ROUND</u> Dinnerware Set: #933 cups & saucers (9 sets & 3 extra saucers); #668 bread & butter plates (16); #556 8" plates (17); #922 cream soups w/underplates (5 sets & 1 extra soup); #928 5" fruit dish (2); and #138 sugar (2) and cream (1). Many pieces are marked. (set).....	\$ 160
<u>DECAGON</u> #867 Cream .....	8
#842 12" Bowl, etched Gloria, signed .....	40
#870 11" Sandwich Server .....	15
#646 5" Candlesticks (pair) .....	25
#627 Candlesticks (pair) .....	20
#984 10" Bowl (mold bruise on handle) .....	15
#972 11" Plate .....	20
#977 11" Basket, signed .....	25
#1082 9" Pickle, signed (2) each ..	10
#1088 10 1/2" oval Vegetable, signed .....	20
#808 8 1/2" flat rim Soup (3) ea. .	10
<u>DECAGON</u> Dinnerware Set: service for 6 - #865 cups & saucers; #809 Bread & butter plates; #815 7 1/2" plates; #597 8 1/2" #1096 cream & sugar; and #870 server. Most pieces signed. (set) .....	\$ 140

## ROYAL BLUE

#157 crystal Marmalade w/blue ft...\$	40
#3121 5 3/8" tall blown Comport ...	30
#1299 11" Vase .....	40
#1337 Cigarette Holder, crystal stem & foot .....	40
#1550 Sweet Potato Vase .....	20

## LIGHT BLUE

C122 8" 3-part Relish .....	\$ 30
#534 3" Ashtry (3) each .....	3
#973/881 5 pc. Bridge Set, signed .	40
#3400/1093 2-pt. hdd. Relish .....	40
#3 5" Star Candlesticks .....	35

## AMETHYST

#1236 7" Ivy Ball .....	\$ 32
#1239 14" Vase .....	35
#1066 5 3/8" blown Comport .....	25
#3126 7 oz. tall Sherbets (set 6)..	55

## LIGHT EMERALD GREEN

8 oz. Cat Bottle .....	\$ 15
#254 5 1/2" Comport (2) ea. ....	11
#1005 6 1/2" Vase (stone on side)	15
#387 2 1/2" Ashtray - signed ....	5
#638 3-lite Candelabra .....	25
#1079 15" oval Decagon platter, signed (slight wear) .....	18
#3400/8 11 1/2" 2-hdd. Sandwich Plate, signed (slight wear).	8
#441 10 1/2" low Comport, signed.	18
#447 6" low comport, flared, signed .....	8
#3400/67 12" Celery/Relish, w/floral cutting .....	20
#611 2 1/2" ind. Almond (2) ea...	12
#1095 3-pc. Sugar & Cream set ...	25
#488 9 1/2" Tray .....	10
#620 3-pc. Sugar & Cream Set, signed .....	20
#1082 9" Decagon Pickle, (2) ea..	10
#749 6 1/4" Decagon BonBon .....	5
#758 5 1/2" Decagon BonBon .....	5
#759 7" Decagon Plate, signed ...	5
#3400/90 6" 2-pt. Relish, signed.	8
#3400/52 5 1/2" Butter no lid....	5
#1301 10" Vase w/crystal foot ...	15
#922 Cream Soup/Saucer (4 sets)..	20
<u>ROUND</u> Dinnerware Service for 9: #933 cups & saucers; #668 bread & butters; #556 8" plates; #3400/1177 9" dinner plates; and #934 2-hdd. soups w/underplates. (set) .....	\$ 175

## MISCELLANEOUS

Gold Krystal Georgian Sherbet ...\$	10
Ebon #3797/165 Square Candy & cover w/gold band decor. (minimal wear on knob) .....	22
Primrose #47 6 3/4" low Comport..	20
Helio #46 8" low Comport .....	35
Jade 7 1/2" flared Comport .....	30
Coral Mt. Vernon #4 ind. Cream & Sugar .....	40
Cobalt 14 panel bowl, signed ....	20
Mulberry 8" Cocktail Shaker (no lid) signed .....	10
Mulberry #441 10 1/2" low Comport	15
Pink #534 3" Ashtray (3) each ...	3
Pistachio #534 3" Ashtray (7) ea.	3

MINT UNLESS SPECIFIED!

POSTAGE & INSURANCE EXTRA!







**COLUMBUS ANTIQUE  
FLEA MARKET  
(ANTIQUES & COLLECTIBLES)**

Ohio State Fairgrounds - Lausche Building  
Off I-71 Exit 17th Avenue - Columbus, Ohio

**DECEMBER 14th**

Sunday Only - 7 A.M. to 4 P.M.  
Show Admission \$1.00 - Under 12 Free  
150 QUALITY DEALERS

SELLING Advertising Art Deco, books, Cambridge, clocks, coins, collectibles, Depression glass, dolls, Fiesta, fine early furniture, Heisey, jewelry, lamps, oak furniture, post cards, pottery, good primitives, tools and print shop items



4214 North High Street, Columbus, Ohio 43214  
(614)267-8163 (614)263-6830 (614)885-2352

NEXT SHOW: January 11, 1987

**The DAZE**

★ SPECIAL OFFER  
to NCC friends  
\$2. off the 1 year  
subscription price,  
when on this form  
or copy of.

The Original, National monthly newspaper dedicated to the buying, selling & collecting of colored glassware and china including Depression Glass and the Elegant Glass (Cambridge, Heisey, Fostoria etc.) We educate and inform you each month with feature articles by top notch columnists, readers "finds", club happenings, show news and a multitude of ads. Find those missing pieces to your 30s, 40s or 50s pattern. Can't identify it? Perhaps we can help. "Keep up with what's happening with a subscription to the DAZE. Buy, sell or trade from the convenience of your easy chair.

Name \_\_\_\_\_ Street \_\_\_\_\_

City \_\_\_\_\_ State \_\_\_\_\_ Zip \_\_\_\_\_

1 yr. \$15.00  2 yrs. \$29.00  \$1.75 single current copy

Check enclosed  MasterCard  Visa

Exp. date \_\_\_\_\_ Card No. \_\_\_\_\_

Signature \_\_\_\_\_

Orders to D.G.D., Box 57NC, Otisville, MI 48463

Please allow 30 days for your first issue— Canadian subscribers, add \$1. per year and subscribe by charge card only! This Special Offer May Not Be Combined With Other Special Offers

WELCOME TO GLASS COUNTRY!

I-70

STOP AND SEE US

ROUTE 40

WE FEATURE GLASSWARE OF:  
CAMBRIDGE, HEISEY, FENTON & FOSTORIA

Plus a full line of Art Pottery and a General line of Quality Antiques

*Stage Coach  
Antique Mall*

RT. 40, ONE-HALF MILE WEST OF I-70 NORWICH EXIT #164  
MANY DEALERS-WIDE SELECTION-PLENTY PARKING

DORIS AND ROY ISAACS  
BUY AND SELL  
614-872-3720



7525 EAST PIKE  
NORWICH, OHIO 43787

MON THRU SAT 10-5:30 SUN 12-5:30  
SUMMER EVENING HOURS BY CHANCE

MANY DEALERS - PLENTY OF PARKING

# DEALERS DIRECTORY

When Writing To  
Dealers Please  
Include SASE

<p><b>SPECIALIZE IN CAMBRIDGE GLASS &amp; ANTIQUES</b> <b>DOYLE L. BYINGTON</b> 58 Buena Vista Ter., San Francisco, CA 94117 415/621-1854  Shows: Mail-Order - Buy &amp; Sell - By Appointment</p>		<p><b>THE MUTED SWAN ANTIQUES</b> 5486 Peachtree Rd. Chamblee, GA 30341 Heart of Chamblee Antique Row Specializing in Cambridge, Heisey and Fostoria Bill &amp; Pat Miller 404-451-7620</p>
<p><b>MILBRA'S MATCHING SERVICE</b> P.O. Box 363, Rio Vista, TX 76093 <b>Milbra Long 817 / 645-6066</b> FOSTORIA * CAMBRIDGE * HEISEY * DEPRESSION ERA GLASSWARE <b>BUY and SELL</b></p>	<p><b>BENICIA ANTIQUE SHOP</b> 305 First Street Benicia, California 94510  <b>OPEN 11 AM - 5 PM</b> Closed Monday  Z. E. LOPES 707-745-0978</p>	<p><b>CHARLES MIKULIK</b> Box 416 Elizabeth, N.J. 07207  — <b>COLLECTOR</b> — Always paying good prices for <b>CAMBRIDGE CAPRICE</b> in all colors  201-688-1144  <b>CARRY MOST TYPES OF ANTIQUES</b></p>
<p><b>ANDREJCAK'S ANTIQUES</b> 14533 Bayes Ave. Lakewood, Ohio 44107 Joe &amp; Karen Andrejcek 216-226-3417 <b>SHOWS ONLY — CAMBRIDGE — FENTON — CHINA</b></p>	<p><b>VISIT HISTORIC BENICIA</b> and its 28 shops Off Interstate #80 ..... ..... North of San Francisco</p>	
<p><b>BOGART'S ANTIQUES</b> Stagecoach Mall, Building #2 Norwich, OH 43767 ***** <b>Jack and Sharon Bogart</b> 614/826-7439 and 614/872-3514 ***** BUY - SELL - APPRAISE - REFINISH SEAT WEAVING - CLOCK REPAIR COPPER &amp; BRASS POLISHING <b>GENERAL LINE CAMBRIDGE GLASS</b></p>	<p><b>RICHARD BENNETT</b> 64183 Warne Drive, Cambridge, OH 43725 Phone: 614 / 432-4483 <b>SPECIALIZING IN CAMBRIDGE GLASS</b> Stagecoach Mall - Bldg. 3 - Norwich, OH</p>	<p><b>BERKELEY ANTIQUES</b> 69 Berkeley St., Boston, MA 02116 <b>OPEN: Monday thru Saturday 11 AM to 5 PM</b> GEORGE &amp; FRANK 617/426-1048 <b>DUNCAN, CAMBRIDGE, HEISEY, GENERAL LINE</b></p>
<p><b>THE GLASS CUPBOARD</b> 39 Shire Oaks Drive Pittsford, New York 14534 Marcia Ellis Cambridge, Duncan Miller (716) 586-7596 Shows, Mail Order, Appt.</p>	<p><b>D &amp; D ANTIQUES</b> Columbus, Ohio  DICK SLIFKO <b>SHOWS ONLY</b></p>	<p><b>THE GLASS MENAGERIE</b> 212 Market Street Denton, Maryland 21629 Barbara &amp; Bill Danels 301/822-8794 <b>SPECIALIZING IN GLASSWARE OF THE DEPRESSION ERA</b></p>
<p><b>THE GLASS CUPBOARD</b> 39 Shire Oaks Drive Pittsford, New York 14534 Marcia Ellis Cambridge, Duncan Miller (716) 586-7596 Shows, Mail Order, Appt.</p>	<p><b>JUDY'S ANTIQUES</b> Judy Bennett 422 S. Ninth Street (Corner of Jefferson) Cambridge, Ohio 43725 <b>BUYING Ph. 614-432-5855 SELLING</b> <i>Cambridge Glass my Specialty</i></p>	<p><b>"Happiness Is" - The Stultzs</b> 3106 Warren Court, Glen Allen, VA 23060 Shows and Mail (Richmond Area) 804/262-1273 <b>GLASS CIRCA 1890-1960</b></p>
<p><b>PEG AND DALE GOTSCHALL</b> Antiques, Cambridge and Other Quality Glass 833 N. 6th St., Cambridge, Ohio 43725 Phone 614/432-5529 Stagecoach Mall — Bldg. 2 — Norwich, Ohio</p>	<p><b>GREEN ACRES FARM</b> 2678 Hazelton Etna Rd., Pataskala, OH 43062 (State Route 310 North) Sat. &amp; Sun. 1-7 PM 614/927-1882 <b>Antiques, Crystal Glass and Collectibles</b></p>	<p><b>MOSTLY HEISEY</b> 16 Clayton Place, Albany, NY 12209 Rhoda Curley 518 / 482-6272 <b>SHOP and MAIL ORDER</b></p>
<p><b>THE HITCHING POST</b> 7467 S. R. 88 Ravenna, OH 44266 Ph. 216-296-3686 D. McDaniel <b>CAMBRIDGE — HEISEY — GENERAL LINE</b></p>	<p><b>BUY-SELL 513/390-3617</b> <b>Taste of Honey</b> Glassware—Collectibles CLARKE &amp; CAROLE WEST 3433 Turner Dr. Springfield, OH 45504</p>	<p><b>1886 HOUSE</b> East Schodack, N.Y. 12063 <b>MAIL and SHOWS</b> Laurie Cruise 518-477-5895 <b>CAMBRIDGE - NORITAKE - AZALEA - D.G.</b></p>
<p><b>L &amp; M ANTIQUES</b> 1331 S.E. 4th Ave., Pompano Beach, FL 33060 Lydia &amp; Cliff McNeil 305/943-2274 <b>CAMBRIDGE &amp; FOSTORIA OUR SPECIALTY</b> Buy &amp; Sell Shows Only</p>	<p><b>REMEMBRANCES</b> 7597 Daphne Dr., No. Syracuse, NY 13212 Shirley S. Ladouceur 315 / 458-5297 ANTIQUES and COLLECTIBLES <b>MAIL ORDER SHOWS APPOINTMENTS</b></p>	<p><b>MARGARET LANE ANTIQUES</b> 2 E. Main St., New Concord, OH 43762 Lynn Welker 614 826-4418 <b>CAMBRIDGE GLASS MATCHING SERVICE</b> Hours Mon.-Fri. 1-5 PM or by Appointment</p>
<p><b>THE GLASS URN</b> 456 West Main Street, Suite G. Mesa, AZ 85201 602 / 833-2702 Mail Order Shows Open Shop <b>CAMBRIDGE, FOSTORIA, HEISEY, ETC.</b></p>	<p><b>AL STEELE</b> Westerville, Ohio 614-882-6483 or 614-882-7124 Mail Orders and Shows Only <b>HEISEY — CAMBRIDGE — PATTERN GLASS</b></p>	<p><b>SKYLINE DRIVE ANTIQUES</b> 5432 Skyline Drive, Cambridge, OH 43725 Drew &amp; Donna Davis 614 / 432-2621 <b>SPECIALIZING IN CAMBRIDGE GLASS!</b> Shows Mail Order Matching Service</p>



A nonprofit organization dedicated to the preservation and study of Cambridge Glass

# National Cambridge Collectors, Inc.

P O Box 416 Cambridge, Ohio 43725

You Are Cordially Invited  
To Become A Member Of The

NATIONAL CAMBRIDGE COLLECTORS INC

Benefits derived from membership include receipt of our club publication The Cambridge CRYSTAL BALL, informative Quarterly Meetings, Antique Shows, Auctions and other special events

The Cambridge CRYSTAL BALL is published the first of each month. This newsletter contains educational and interesting articles, questions and answers, information on reproductions and reissues, notices of all club functions, classified advertisements, dealers directory and many other features of interest to collectors of Cambridge Glass

Yearly dues are \$13.00 for Individual Members and \$3.00 for each Associate Member. All members have voting rights but only one issue of the CRYSTAL BALL will be mailed per household

Name (please print) \_\_\_\_\_ \$13.00

Mailing Address \_\_\_\_\_

City \_\_\_\_\_ State \_\_\_\_\_ Zip \_\_\_\_\_

Associate Members (Must be at least 12 years of age and living in the same household)

1 Name \_\_\_\_\_

2 Name \_\_\_\_\_

3 Name \_\_\_\_\_

Total number of Associate Members \_\_\_\_\_ @ \$3.00 each \_\_\_\_\_ \$ \_\_\_\_\_

TOTAL AMOUNT ENCLOSED \$ \_\_\_\_\_

Please make check payable to NATIONAL CAMBRIDGE COLLECTORS INC

Recommended by \_\_\_\_\_

IT'S NOT TOO LATE TO GIVE A CHRISTMAS GIFT  
of N.C.C. MEMBERSHIP. SEND IN TODAY!

## MARK YOUR CALENDAR

### ALL CAMBRIDGE AUCTION

SATURDAY - FEBRUARY 28, 1987

THE SHENANDOAH INN  
Old Washington, Ohio

Auction list and complete details will be included in the January 1987 issue of the CRYSTAL BALL.

Plan also to attend the

FEBRUARY QUARTERLY MEETING

FRIDAY - February 27th, 8 PM  
Auction Room, at Shenandoah.

We wish everyone a Blessed  
Christmas Season.



National Cambridge Collectors, Inc.  
P. O. Box 416 Cambridge, Ohio 43725

**FIRST CLASS MAIL**

FIRST-CLASS MAIL  
U.S. POSTAGE  
**PAID**  
So. Vienna, Ohio  
45369  
Permit No. 15



DECEMBER 1986