



Cambridge Crystal Ball

Published monthly by the National Cambridge Collectors, Inc.
to encourage and report the discovery of the elegant and boundless product
of the Cambridge Glass Company of Cambridge, Ohio

Issue No. 173

September 1987



**Sea Shell No. 40-10"
oval Table Center**

Shown in Coral, but may
also be had in Moon-
stone (Crystal with a
soft Satin effect) both
at \$60.00 doz.

*Ask for full illustrations
of our New Sea Shell
Design.*

PLAN A VISIT TO THE N.C.C. MUSEUM OF
CAMBRIDGE GLASS!

Hours: Wednesday thru Sunday - 12 noon to 4 p.m.
MARCH thru OCTOBER

Membership Renewal Notice

This is your **last** issue of the *Crystal Ball*—if the date
on your address label reads 9-87.

Please renew now!

CLOSED
Monday & Tuesday also Easter & July 4th

Cambridge Crystal Ball

Official publication of National Cambridge Collectors, Inc., a non-profit corporation with tax exempt status. Published once a month for the benefit of its members.

Membership is available for individual members at \$13 per year and additional members (12 years of age and residing in household) at \$3 each. All members have voting rights, but only one *Crystal Ball* will be mailed per household.

Back issues of the *Crystal Ball* are available (beginning with Issue No. 1, May 1973) for members only. Cost: 60 cents each or 12 issues for \$7.

1986-87 Officers & Committee Chairpersons

President	Willard P. Kolb
Vice-President	Mark A. Nye
Secretary	Janice Y. Hughes
Treasurer	William C. Smith
Sergeant-at-Arms	Marybelle Moorehead
Budget & Finance	David B. Rankin
By-Laws	Ekkehart A. Vimmer
Convention	Mark A. Nye
Membership	Phyllis D. Smith
Museum	Billy F. Harbaugh
Program & Entertainment	Marlene K. Snyder
Project	Willard P. Kolb
Public Relations	William C. & Phyllis D. Smith
Publicity	Joseph Andrejcek
Study Group Advisor	Phyllis D. Smith
1987 Auction	Lynn M. Welker
1987 Antique Show	Joy R. McFadden
1987 Flea Market	Marybelle Moorehead
Crystal Ball Editor	Phyllis D. Smith

Classified Advertising Rates

5 cents per word \$1.00 minimum

We cannot mix type size in classified advertisements. Abbreviations and initials will count as words. Payment in full must accompany all ads.

Display Advertising Rates

(Camera-ready ads preferred)	Members	Non-Members
1/8 page (9 items)	\$ 4.00	\$ 6.00
1/4 page (20 items)	7.00	10.00
1/2 page (20 items)	12.00	18.00
3/4 page	17.00	25.00
Full page (50 items)	22.00	33.00

Dealers Directory

Five-line maximum \$12.00 for 12 months

Cambridge *Crystal Ball* assumes no responsibility for items advertised and will not be responsible for errors in price, description or other information.

Advertising copy, articles, club news and notices must be in our hands by the 10th of each month to assure publication in our next issue.

Paid advertisements containing reproductions or new glass will not knowingly be accepted for publication.

Opinions or information stated in any signed article or letter printed in the *Crystal Ball* are those of the authors and may or may not agree with National Cambridge Collectors, Inc. The Editor reserves the right to refuse and to edit any material submitted for publication so as to conform with the editorial style of the *Crystal Ball*.

Please Address All Correspondence to:

National Cambridge Collectors, Inc.
P.O. Box 416 Cambridge, Ohio 43725

President — Willard Kolb, 614/695-0695

Secretary — Janice Hughes, 614/432-7823

Editor — Phyllis Smith, 513/323-3888

NCC Museum of Cambridge Glass is located on U.S. Route 40, one-eighth mile east of I-77 near Cambridge. Hours: 12 noon to 4 p.m., Wednesday through Sunday (March through October). Closed Easter and July 4th.

Please notify us immediately of any change in your address.

Please enclose an SASE when requesting information.

CAMBRIDGE GLASS BOOKS FOR SALE

by National Cambridge Collectors, Inc.

* **COLORS IN CAMBRIDGE GLASS**
(128 pages - 60 color plates - fully indexed)
Hardbound with Price Guide \$19.95

* **1930-34 CAMBRIDGE GLASS CO. CATALOG REPRINT**
(250 page reprint of original catalog)
Hardbound with Price Guide \$14.95

* **1949-53 CAMBRIDGE GLASS CO. CATALOG REPRINT**
(300 page reprint of original catalog)
Hardbound with Price Guide \$14.95

* **1956-58 CAMBRIDGE GLASS CO. CATALOG REPRINT**
(164 page reprint of original catalog)
Paperback \$6.95

1985 COMBINED PRICE GUIDE

for 1930-34 & 1949-53 catalog reprints Postpaid \$5.75

*NCC MEMBERS ONLY: These publications are available at 10% discount - or all four (4) at one time for \$50.00.

by Bill & Phyllis Smith

CAMBRIDGE GLASS 1927-1929
(66 page reprint of original catalog)
Paperback with Identification Guide \$7.95

by Mark Nye

CAMBRIDGE STEMWARE
(95 Stemware lines with 107 illustrations)
Paperback \$14.95

by Cambridge Buffs Study Group

NEARCUT
(108 page reprint of 1910 Cambridge Catalog)
Paperback with Price Guide \$9.95

by Mary, Lyle and Lynn Welker

CAMBRIDGE GLASS CO.
(120 pages of reprint from 8 old catalogs)
Paperback \$6.95

CAMBRIDGE GLASS CO. BOOK II
(119 pages of reprint from old catalogs)
Paperback \$6.95

CAMBRIDGE, OHIO GLASS IN COLOR II
Spiralbound \$5.95

by Harold and Judy Bennett

1903 CAMBRIDGE GLASS CO. CATALOG REPRINT
(106 page reprint of an original catalog)
Paperback \$7.50

Address your orders to:

BOOKS
National Cambridge Collectors, Inc.
P.O. Box 416
Cambridge, OH 43725

Please add \$1.00 (P & I) per order.

(Not required for Price Guide)

Ohio residents please add 6% state sales tax.

DEALER DISCOUNTS AVAILABLE - PLEASE WRITE!

THOUGHTS FROM YOUR PRESIDENT

It seems like every time I turn around the deadline for my article comes up. Beginning my seventh year as President I am finding it difficult to come up with anything new to write about.

I've solved the problem of my cluttered desk! Right now there is nothing on it except for this typewriter. I don't know why it took me so long to figure out how to get rid of my mess. It was really very simple -- took about two minutes! I just grabbed it and drug it over to the other side of the basement and, as I started moving it, everything fell off in a heap. If it gets cluttered over here I still have one more corner to go. That should last me until the end of this term.

We held our Directors meeting, for the purpose of electing officers, on July 19th. As you probably noticed in your last CRYSTAL BALL, the officers are the same. Personally I wish it was not this way. I think the office of president should turn over more than once every seven years. I've enjoyed being President and have had wonderful cooperation from the Board and the membership, but after awhile you get into a rut and run out of fresh ideas.

I think we hit a high when we bought the Museum property, built and furnished it, built the storage building and acquired molds and other equipment. Now, and I am speaking for myself, we seem to be coming down off the high but still have many important things to do. New faces and new ideas may put us back on the track to another new high. So much for that idea.

For years we have needed a copying machine at the Museum. This was discussed at the last Directors meeting and by the time you read this we probably will have purchased one. Several of us have probably worn out a few copying machines doing copy work for the club (while we were working for our respective companies), but we no longer have access to these machines. If my memory serves me right, one of our Study Groups also used a company copying machine to print the CRYSTAL BALL in the early days of NCC.

I won't go into all of the discussions at the last Board meeting, for lack of space, but will mention the important issues that should be of interest to you.

We decided to print the Constitution & By-laws in the CRYSTAL BALL once a year rather than mail out individual pamphlets when we get a new member. This will cut down considerably on cost and it should be easier for you to find your copy when you need it.

During the convention, Jack Smith volunteered to make identification signs for all the glass in the Museum. The Museum committee will be getting the first list to him shortly. Jack will be doing this at his leisure so it will take some time to be completed. Thanks Jack!

We are looking into the possibilities of having post cards made to be sold at the Museum. These will depict the interior and exterior of the Museum. This is being done at the request of several members during Convention.

It was decided to set the date for the August and November Quarterly meetings to fall on the first Saturday of that month for this year and in the future. All 1988 meeting date were set and you will find them listed periodically on the back page of your CRYSTAL BALL.

Mark Nye was appointed to research the idea of an Encyclopedia of Cambridge Glass and report to the Board on the feasibility. This was also discussed by our members during the Annual meeting. At the same time, Mark will also look into the possibility of publishing a Museum Catalog.

There was a discussion at the Annual meeting (following a suggestion) that we hold an Auction and allow the high bidder, in each case, to select a name for the numbered Cambridge patterns. The idea being to help collectors identify pieces by name rather than by line numbers. This was discussed at considerable length during the Board meeting and it was felt that until we complete our research of all available material and determine that Cambridge did not have a name for these lines, we could possibly cause a lot of confusion. To arbitrarily name these lines and then find that they already had a name could be disastrous, not to mention the confusion that would be caused when we try to correct any errors. (My personal view is that you don't change history to suit your needs.)

We discussed printing the 1940 Catalog which

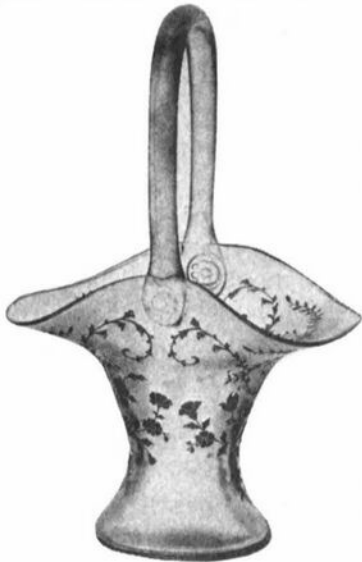
continued on page 16

Baskets

PART III

by MARK A. NYE

Apparently glass baskets were not a popular item in the late 1920s and early 1930s, as not a single basket is shown in the 1930 Cambridge catalog. It was not until the 1932 supplement was issued that one finally appeared and then it was a basket first made some years before -- the #119 7" Basket.



#119 7" Basket

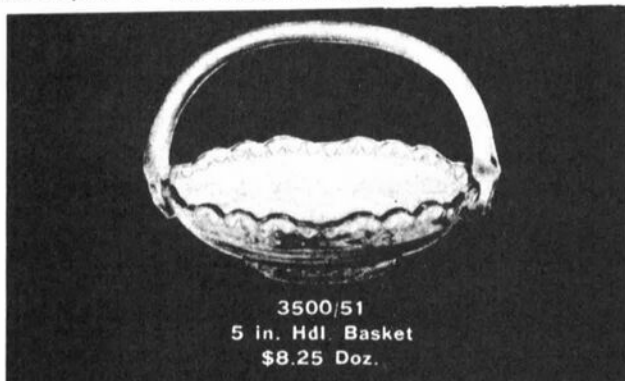
In this appearance it is shown etched Portia and at the same time may also have been available etched Diane.

In the same 1932 catalog supplement the #119 described as "#119 7" Basket (12" high)" appears on a page headed "Cambridge" Two Tone "Quick Sellers" where it is illustrated in a dark color, possibly royal blue, forest

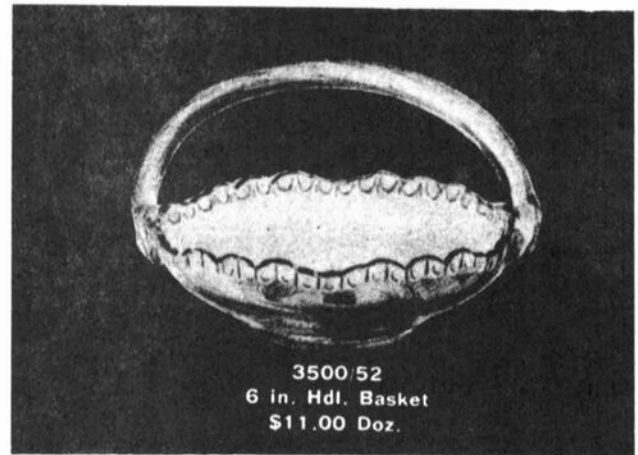
green or carmen, with a crystal handle.

The #119 basket also appears in the 1934 Catalog supplement, this time in crown tuscan with D/1001 (etched Portia) gold encrusted. This basket is also known in crown tuscan without any type of decoration.

The 1933 supplement saw the introduction of the #3500 or Gadroon line and its two squat style baskets; the #3500/51 5" and the #3500/52 6" handled baskets.



3500/51
5 in. Hd. Basket
\$8.25 Doz.



3500/52
6 in. Hd. Basket
\$11.00 Doz.

During the second half of the 1930s, the #3500/51 and #3500/52 baskets were produced only in crystal and were sold plain or etched Valencia, Minerva, Elaine, Rose Point, Diane and Portia. In 1939, these two baskets were also being offered with D/1041 (gold encrusted Rose Point), and D/1014 (gold encrusted Elaine). In addition #3500/51 was available with D/1001 (gold encrusted Portia) and D/1012 (gold encrusted Diane).

In 1940 the #119 was being offered in crystal, amber, royal blue, forest green, amethyst and carmen. No doubt this basket was also produced in the same colors during the preceding years. During the mid-to-late 1930s, the #119 basket was available etched Diane, Portia, Valencia, Elaine, Minerva, Rose Point and Wildflower.



Basket.
Packed 16 dozen in a barrel:
Made in Crystal, Blue and Amber.

Our next group of baskets dates back to 1902 or 1903. The 1903 Cambridge catalog contained an illustration of what then was simply designated "Basket" on a page of Opal Novelties. This little basket is the one that became known

as the #1506/1 4" basket. The 1906 Cambridge catalog illustrates this basket with the caption as shown here. Sometime after 1906, this basket was discontinued as it does not appear in catalogs issued in following years.

It is not known when the #1506 Novelty Baskets were reintroduced but they were once again in production by the summer of 1938. As can be seen on the next page, these were designed to resemble woven baskets. This group consists of the #1506/1 4" basket (tall); #1506/2 5" basket (low); #1506/3 4 1/2"

continued on next page

BASKETS continued

basket (medium); and the related item #1506/4 5" plate. Produced into the early 1940s in mocha, pistachio, moonlight, la rosa, and crystal, these items were also manufactured in crystal with a satin finish and with the decoration D/Gold. (Editor's Note: the #1506/1 4" basket has also been seen in crown tuscan.)

A third #3500 or Gadroon line basket was in production by early 1939 and probably dates earlier. It is listed as the #3500/79 3" Favor basket and in 1939 was being made in crystal, amber, royal blue, forest green and amethyst. In the 1940 Cambridge catalog this little basket, in addition to being listed as a basket, is also found under the category "Vases" as is the #119 7" basket.

The #3500/51 and #3500/52 baskets were produced only in crystal during the 1940s and



3500/79
3 in. Favor Basket
\$4.00 Doz.

were available plain as well as etched Diane, Portia, Elaine and Rose Point.

During the 1940s the #119 basket was manufactured and sold plain or etched Diane, Portia, Rose Point, Elaine, and Wildflower.

During the 1940s the market for glass baskets must have disappeared or, after the war, was supplied by imports. Not a single basket of any type appears in the 1949 Cambridge catalog or any of its supplemental pages. It was not until the

continued on page 6

NOVELTY BASKETS



1506/2—5 In.



1506/1—4 In.



1506/3—4½ In.



1506/4—5 In. (Plate Shape)

VASES



79 8 in.
CT. PI \$16.25



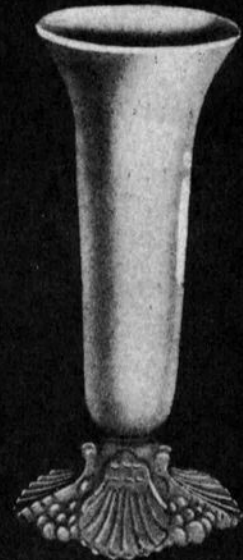
80 10 in.
CT. PI \$24.75



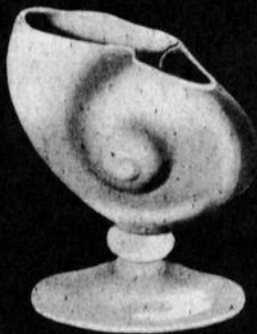
47 9 in. Cornucopia Vase
C. PI \$30.00
Coral or Moonstone \$37.50



48 9 in. Belled Vase
C. PI \$15.00
Coral or Moonstone \$22.50



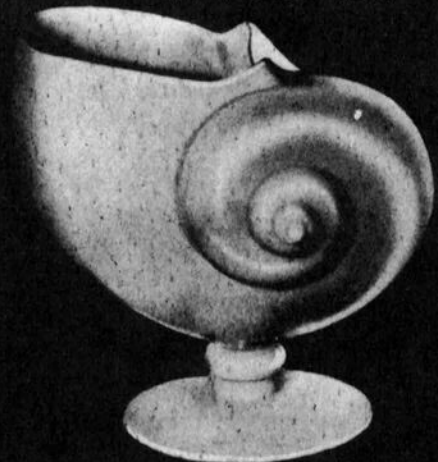
49 10 in. Belled Vase
C. PI \$22.50
Coral or Moonstone \$30.00



44 6 in. Flower Center
C. A. Rb. Fg. Amie. PI \$18.75
Coral or Moonstone \$22.50
Car. PI \$30.00



46 7 1/2 in. Shell Flower Holder
C. A. Rb. Fg. Amie. PI \$22.50
Coral or Moonstone \$30.00



42 8 in. Flower Center
C. A. Rb. Fg. Amie. PI \$37.50
Coral or Moonstone \$45.00
Car. PI \$67.50

C-Crystal A-Amber E-Emerald Dp-Dianthus P-Pk Mt-Moonlight Fg-Forest Green Rb-Royal Blue Amie-Amethyst CT-Crown Tuscan Car-Carmen E-Etched PI-Plan
All prices are per dozen. All subject to your usual discount.



The Cambridge Glass Company



38 11 in. Fid. Everglade
C. A. M. Fg. Pl. \$16.50



22 6 in. Everglade
A. M. Fg. Pl. \$12.40



23 6 in.
C. A. M. Fg. Pl. \$12.40



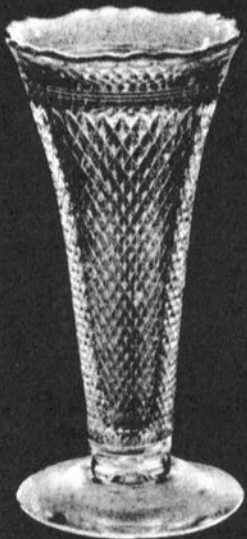
21 7 in. Everglade
A. M. Fg. Pl. \$15.15



23 5 in. Everglade
C. A. M. Fg. Pl. \$6.90
1319 5 in. Finsted
C. A. Fg. Rb. Pl. \$6.25



50 6 in. Mt. Vernon
C. A. Fg. Rb. Pl. \$4.90
Car. Pl. \$18.00



46 10 in. Mt. Vernon
C. A. Fg. Rb. Pl. \$13.15
Car. Pl. \$25.50



54 7 in. Mt. Vernon
C. A. Fg. Rb. Pl. \$9.20
Car. Pl. \$14.20



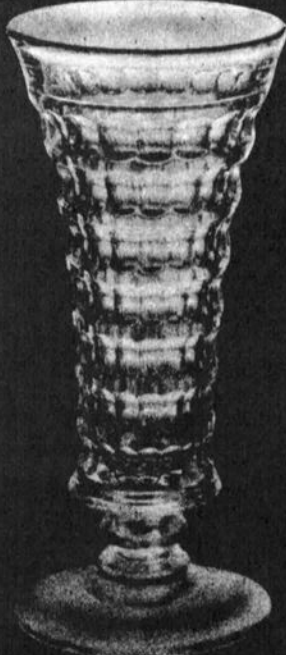
20 10 in. Everglade
C. A. M. Fg. Pl. \$20.60



16 10 in. Fid. M. W.
C. A. Fg. Rb. Pl. \$24.00
Car. Pl. \$66.00

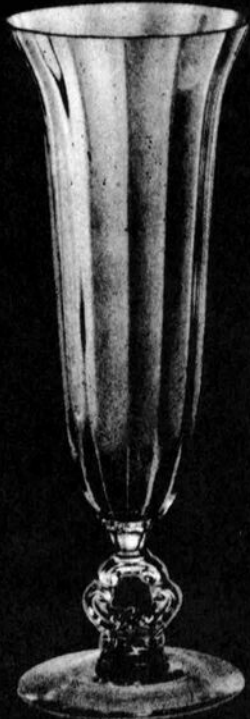


17 7 in. Mt. M. W. Fg.
C. Pl. \$16.00

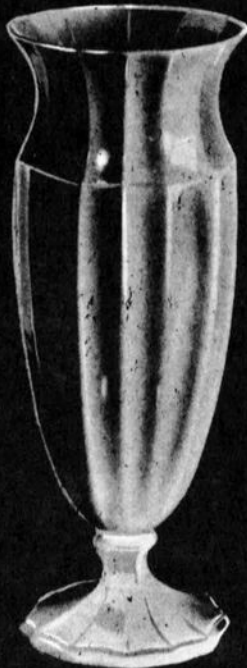


16 10 in. Fid. M. W.
C. A. Fg. Rb. Pl. \$24.00
Car. Pl. \$66.00

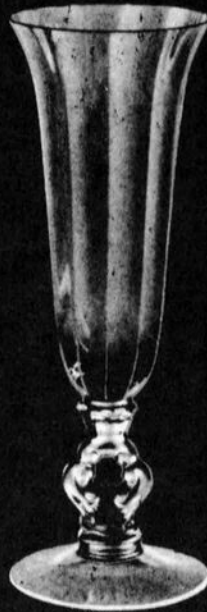
C-Crystal, A-Amber, E-Emerald, Dp-Dianthus Pink, Mt-Moonlight, Fg-Forest Green, Rb-Royal Blue, Amc-Amethyst, Ct-Crown Tuscan, Car-Carmen, E-Etched, Pl-Plain
All prices are per dozen, f.o.b. subject to your annual discount.



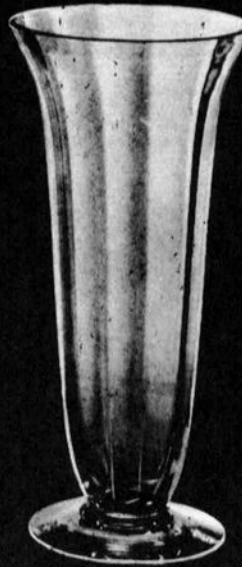
1238 12 in. Ftd.
C-A-E Dp Fg PI \$24.75 E \$40.50
Rb. Ame. PI \$24.75
Car. PI \$45.00
CT. PI \$33.00



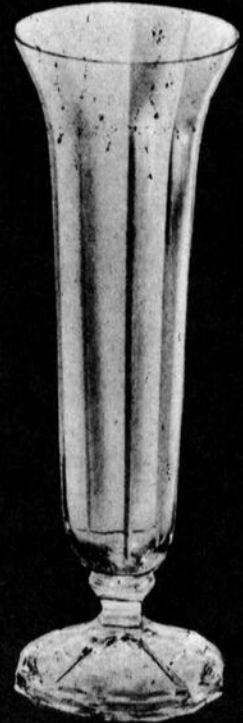
1297 11 in. Ftd.
CT. PI \$33.00



1237 9 in. Ftd.
C-A-E Dp Fg PI \$16.50 E \$24.50
Rb. Ame. PI \$16.50
Car. PI \$30.00



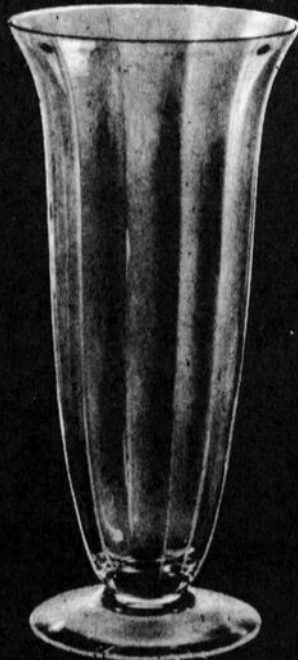
277 9 in. Ftd.
A Fg PI \$15.00 E \$27.00
Rb. Ame. PI \$15.00
Car. PI \$30.00



1296 12 in. Ftd.
C-A-E Dp Fg PI \$22.50 E \$37.50
Rb. Ame. PI \$22.50



279 13 in. Ftd.
C-A-E Dp. MI Fg PI \$49.50 E \$73.00
Rb. Ame. PI \$49.50
Car. PI \$99.00



278 11 in. Ftd.
C-A-E Dp. MI Fg PI \$24.75 E \$40.50
Rb. Ame. PI \$24.75
Car. PI \$45.00



1298 13 in. Ftd.
CT. PI \$44.00



1239 14 in. Ftd.
C-A-E Dp Fg PI \$33.00 E \$56.75
Rb. Ame. PI \$33.00
Car. PI \$67.50

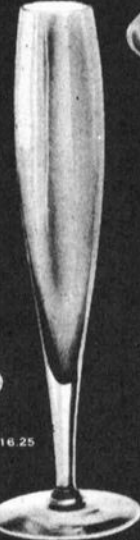
C-Crystal, A-Amber, E-Emerald, Dp-Dianthus-Pink, MI-Moonlight, Fg-Forest Green, Rb-Royal Blue, Ame-Amethyst, CT-Crown Tuscan, Car-Carmen, E-Etched, PI-Plain
All prices are per dozen list, subject to your usual discount.



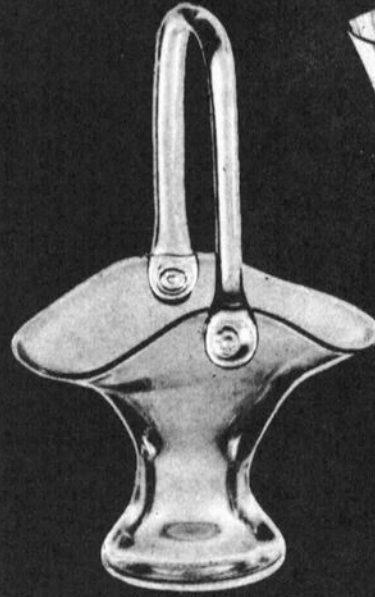
The Cambridge Glass Company



274-10 in. Ftd.
C-A-E-Dp-Mi-Fg-PI \$8.25-E-\$16.25
Rb-Amc-PI \$8.25
CT-PI \$11.00



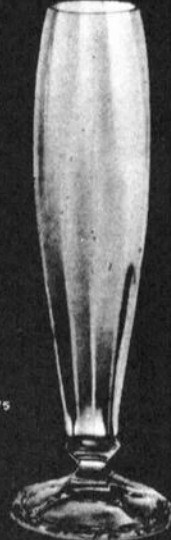
272-10 in. Ftd.
C-A-E-Dp-Mi-Fg-PI \$8.25-E-\$16.25
Rb-Amc-PI \$8.25
Car-PI \$15.00



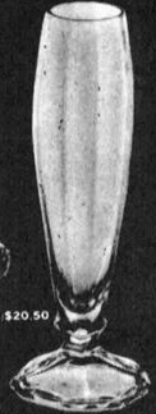
119-7 in. Hld. Basket
C-A-E-Dp-Fg-PI \$16.50-E-\$34.00
Rb-Amc-PI \$16.50
Car-PI \$30.00
CT-PI \$24.75



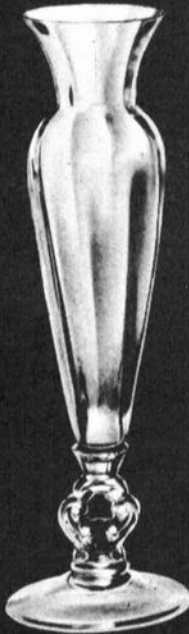
1299-11 in. Ftd.
C-A-E-Dp-Fg-PI \$33.00-E-\$56.75
Rb-PI \$33.00
Car-PI \$67.50
CT-PI \$44.00



1284-10 in. Ftd.
C-A-E-Dp-Fg-PI \$12.50-E-\$20.50



1283-8 in. Ftd.
C-A-E-Dp-Mi-Fg-PI \$8.25-E-\$16.25
Rb-Amc-PI \$8.25
CT-PI \$11.00



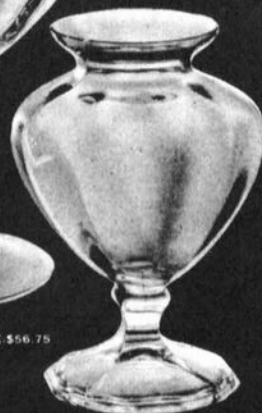
1234-12 in. Ftd.
C-A-E-Dp-Fg-PI \$16.50-E-\$28.50
Rb-Amc-PI \$16.50
Car-PI \$30.00



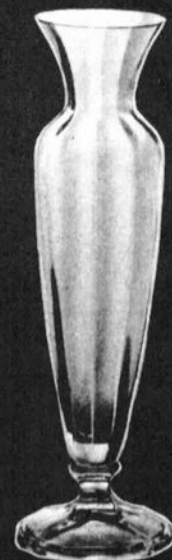
1233-9 in. Ftd.
C-A-E-Dp-Fg-PI \$12.50-E-\$20.50
Rb-Amc-PI \$12.50
Car-PI \$22.50



1302-9 in. Ftd.
C-A-Fg-PI \$33.00-E-\$56.75
Rb-Amc-PI \$33.00
Car-PI \$67.50
CT-PI \$44.00



1303-7 in. Ftd.
C-A-E-Dp-Fg-PI \$12.50-E-\$20.50



1301-10 in. Ftd.
C-A-E-Dp-Fg-PI \$12.50-E-\$20.50
Rb-Amc-PI \$12.50
Car-PI \$22.50
CT-PI \$16.50



1300-8 in. Ftd.
C-A-E-Dp-Fg-PI \$8.25-E-\$16.25
Rb-Amc-PI \$8.25
Car-PI \$15.00
CT-PI \$11.00

C-Crystal, A-Amber, E-Emerald, Dp-Dianthus Pink, Mi-Moonlight, Fg-Forest Green, Rb-Royal Blue, Amc-Amethyst, CT-Crown Tuscan, Car-Carmon, E-Etched, PI-Plain
All prices are per dozen, list, subject to your usual discount



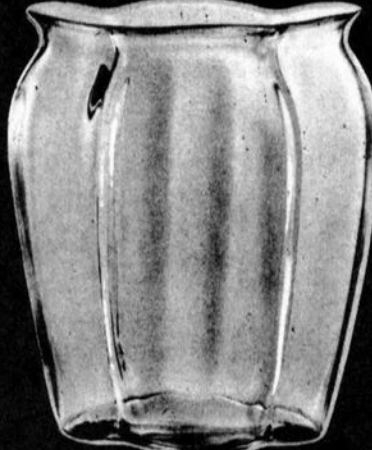
1335-12 in.
C-A-Fg-PI \$22.00 E-\$46.00
Rb-Ame-PI \$22.00
Car-PI \$37.50



1418-5 1/2 in.
CT-PI \$20.60



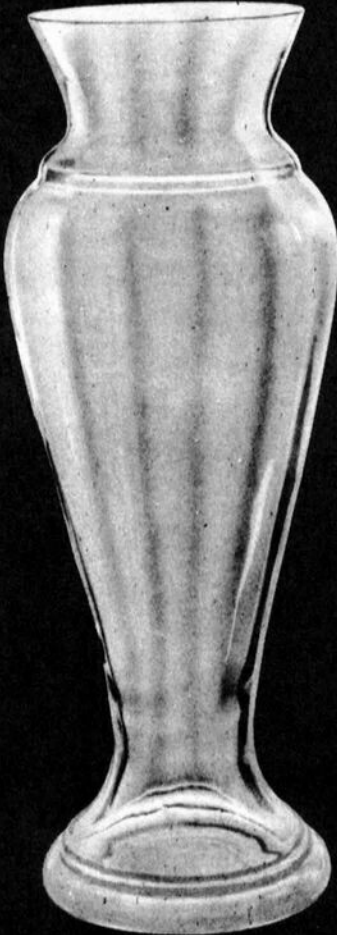
1430-8 in.
C-A-Fg-PI \$18.00 E-\$34.00
Rb-Ame-PI \$18.00
Car-PI \$31.60
CT-PI \$24.75



1228-9 in. Oval
C-A-E-Dp-Fg-PI \$33.00 E-\$56.75
Rb-PI \$33.00
Car-PI \$75.00
CT-PI \$44.00



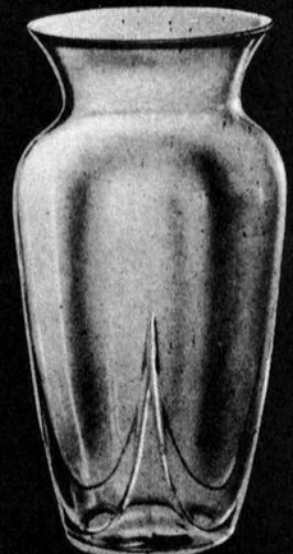
1417-8 in.
C-A-Fg-PI \$15.00 E-\$31.00
Rb-Ame-PI \$15.00



1336-18 in.
C-Fg-PI \$75.00 E-\$150.00
Rb-Ame-PI \$75.00
Car-PI \$150.00



779-14 in.
A-E-Dp-PI \$44.00 E-\$78.00
Rb-Ame-PI \$44.00
Car-PI \$90.00



1242-10 in.
C-A-E-Dp-Fg-PI \$16.50 E-\$32.50
Rb-Ame-PI \$16.50
Car-PI \$30.00

C-Crystal, A-Amber, E-Emerald, Dp-Dianthus, P-pink, MI-Moonlight, Fg-Forest Green, Rb-Royal Blue, Ame-Amethyst, CT-Crown Tuscan, Car-Carmen, E-Etched, PI-Plain
All prices are per dozen, list, subject to your usual discount



The Cambridge Glass Company



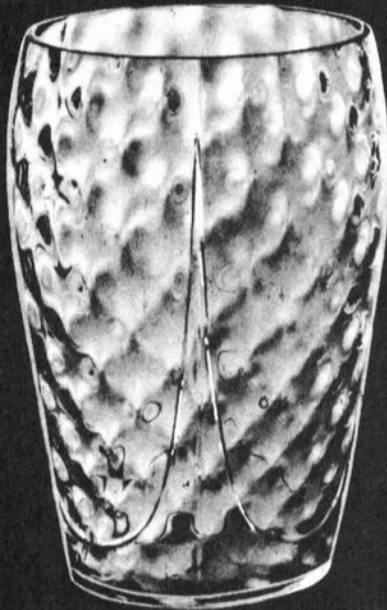
1309-5 in.
C-A-E-Dp-Fg-PI \$8.25 E \$16.25
Rb-Ame-PI \$9.25
Car-PI \$15.00
CT-PI \$11.00



3400 102 5 in. Globe
C-A-E-Dp-Fg-PI \$11.00 E \$23.00
Rb-Ame-PI \$11.00
Car-PI \$18.00
CT-PI \$15.10



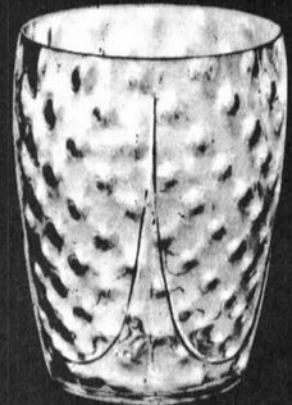
3400 103 6 1/2 in. Globe
C-A-E-Dp-Fg-PI \$15.00 E \$31.00
Rb-Ame-PI \$15.00
Car-PI \$22.50
CT-PI \$20.60



1448-10 in.
C-A-Fg-Rb-Ame-PI \$22.50



1447-8 in.
C-A-Fg-Rb-Ame-PI \$18.00



1446-6 in.
C-A-Fg-Rb-Ame-PI \$12.00



782-8 in.
C-A-E-Dp-Fg-PI \$12.50 E \$24.00
Rb-Ame-PI \$12.50



783-9 in.
A-E-Dp-Fg-PI \$15.00 E \$31.00
Rb-Ame-PI \$15.00



402-12 in.
C-A-E-Dp-Ml-Fg-PI \$18.00 E \$42.00
Rb-Ame-PI \$18.00

C-Crystal, A-Amber, E-Emerald, Dp-Dianthus Pink, Mi-Moonlight, Fg-Forest Green, Rb-Royal Blue, Ame-Amethyst, CT-Crown Tuscan, Car-Carmen, E-Etched, PI-Plain
All prices are per dozen list subject to your usual discount



3500.122 7 in. Ftd. Vase
C A Fg Pl \$12.40 E \$24.25
Rb Ame Pl \$12.40



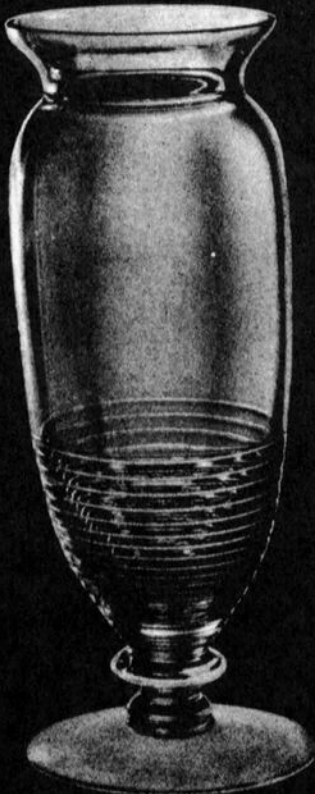
3500.45 10 in. Ftd. Vase
C A Fg Pl \$29.70 E \$45.00
Rb Ame Pl \$29.70
Car Pl \$52.80



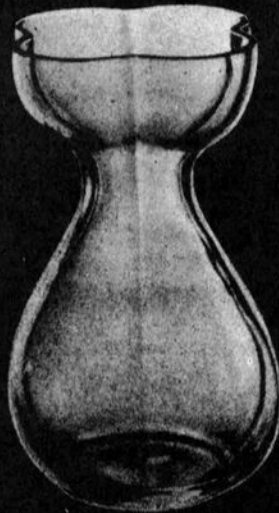
3400.93 Ivy Ball
C A Fg Pl \$11.60 E \$19.50
Rb Ame Pl \$11.60
Car Pl \$20.60



1236 Ftd. Ivy Ball
C A E Dp Fg Rb Ame Pl \$16.50
Car Pl \$22.50
CT Pl \$24.75



1402.79 12 in. Ftd. Vase
C A Fg Pl \$33.00 E \$56.75
Rb Ame Pl \$33.00
Car Pl \$66.00



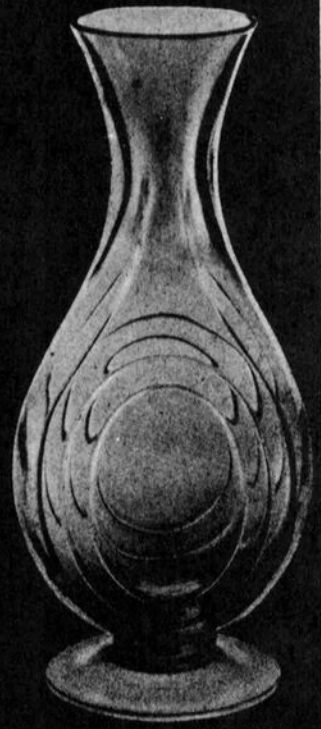
1431 8 in. Bulb. Vase
A Fg Rb Ame Pl \$15.00
Car Pl \$22.50



3500.44 8 in. Ftd.
C A Dp Ml Fg Pl \$15.00 E \$27.00
Rb Ame Pl \$15.00
Car Pl \$26.25



3450 7 in. Ftd. Vase
C A Fg Rb Ame Pl \$20.00
Car Pl \$41.25



3450 9 in. Ftd. Vase (1130)
C A Fg Rb Ame Pl \$24.75
Car Pl \$49.50
CT Pl \$31.00

C Crystal A Amber E Emerald Dp Dresden Pink Ml Moonlight Fg Forest Green Rb Royal Blue Ame Amethyst CT Crown Tuscan Car Carmen E Etched Pl Plain
All prices are per dozen and subject to your usual discount.



The Cambridge Glass Company



306-3 in. Miniature
Fg-Rb-Ame. Pl \$4.10



561-4 in. Miniature
Fg-Rb-Ame. Pl \$4.10



6004-6 in. Miniature
Fg-Rb-Ame. Pl \$5.75
Car. Pl \$10.50
CT. Pl \$7.50



6004-5 in. Miniature
Fg-Rb-Ame. Pl \$5.50



3450-3 in. 2 Hds
C-A-Fg-Rb-Ame. Pl \$10.40
Car. Pl \$20.60



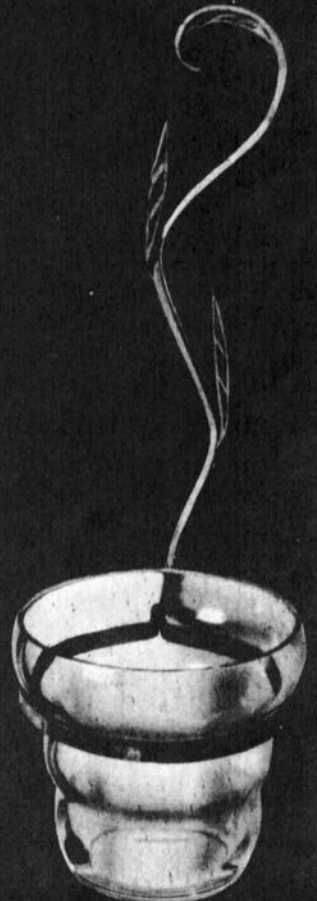
3400-167-6 in.
C-A-Fg. Pl \$9.25-E \$16.25
Rb-Ame. Pl \$8.25
Car. Pl \$15.00



309-4 1/2 in. Miniature
Fg-Rb-Ame. Pl \$4.10



2707-7 in. Miniature
Fg-Rb-Ame. Pl \$3.30



1330 Sweet Potato Vase w Bracket
A-Fg-Rb-Ame. Pl \$15.00
Car. Pl \$22.75
also
without Bracket
A-Rb-Fg-Ame. Pl \$11.00
Car. Pl \$22.50



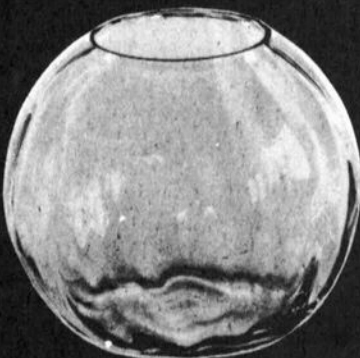
1409-4 1/2 in. Floating Rose Bowl w 2 1/2 in. Opening
C-A-Rb-Ame. Pl \$7.50
Car. Pl \$15.00



1410-6 in. Floating Rose Bowl w 3 in. Opening
C-A-Rb-Ame. Pl \$11.90

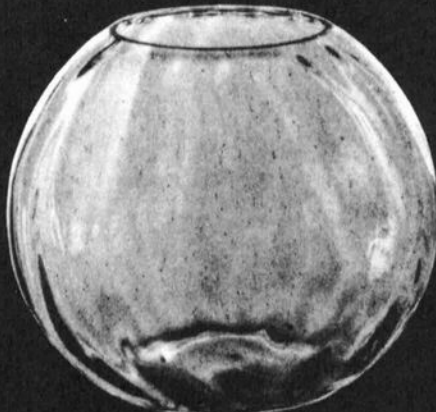


308-4 in. Miniature
Fg-Rb-Ame. Pl \$5.75



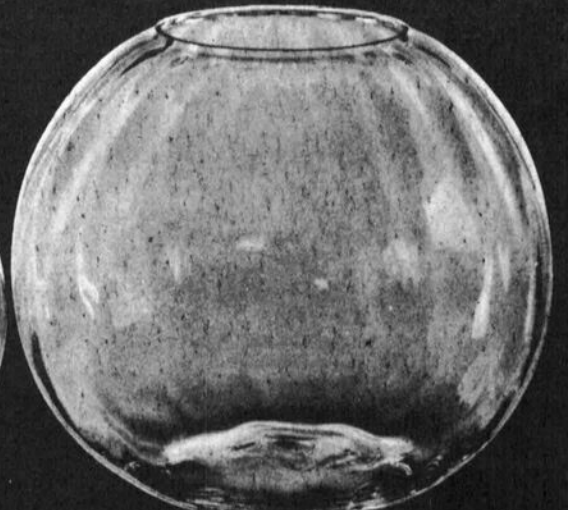
1411-7 in. Floating Rose Bowl w 3 1/2 in. Opening
C-A-Rb-Ame. Pl \$18.75
Car. Pl \$37.50

also
1449-7 in. w 4 1/2 in. Opening



1412-8 in. Floating Rose Bowl w 4 1/2 in. Opening
C-A-Rb-Ame. Pl \$26.25
Car. Pl \$52.50

also
1450-8 in. w 6 in. Opening



1413-10 in. Floating Rose Bowl w 4 1/2 in. Opening
C-A-Rb-Ame. Pl \$45.00

also
1451-10 in. w 8 in. Opening

C-Crystal. A-Amber. E-Emerald. Dp-Dianthus Pink. Ml-Moonlight. Fg-Forest Green. Rb-Royal Blue. Ame-Amethyst. CT-Crown Tuscan. Car-Carmen. E-Etched. Pl-Plain
All prices are per dozen (1st. Subject to your usual discount)

Club News

National Cambridge Collectors, Inc.
Quarterly Meeting
August 8, 1987
NCC Museum of Cambridge Glass
Cambridge, Ohio

The meeting was called to order at 1:50 p.m. by President Kolb. In attendance were six Board members and 35 club members.

President Kolb thanked Charles Upton for mowing and trimming the grass at the Museum this summer.

The minutes of the previous meeting held on June 28, 1987, were read by Janice Hughes and approved.

The Treasurer did not give a report.

COMMITTEE REPORTS

CRYSTAL BALL: Editor Phyllis Smith thanked everyone for the articles and photos from the Convention, and apologized for the CRYSTAL BALL being late this month.

MEMBERSHIP: Chairman Phyllis Smith reported we now have 1,227 members.

PUBLIC RELATIONS: Bill Smith reported they did not attend the NDGA Convention, but would be attending the Central Michigan Show in Dearborn on October 17th & 18th.

OLD BUSINESS: Bill Smith reported that the Glass House, Inc. is issuing stock, but he has not seen a prospectus as yet. On August 29 they will have an all day dig. There will be an admission charge of \$3 and a charge of \$1 per pound for any glass kept.

Bill Smith reported we have purchased ten 8' tables and ten 6' tables.

President Kolb reported we have purchased a copier for the Museum. Members are welcome to copy research material at a nominal fee.

Bill Smith reported we will be having post cards made to sell in the Museum. If anyone has any photos of the Museum or glass,

suitable to use, please send them to him right away.

President Kolb reported the dates for the August and November Quarterly meetings will always be on the first Saturday of the month. The November Quarterly meeting will be on November 7th at The Upstairs in downtown Cambridge. Details will be in the CRYSTAL BALL.

President Kolb showed Caprice items made in Country Cranberry by Fenton. Also a sample Nautilus vase. These will be shown in the CRYSTAL BALL soon.

Janice Hughes reported the City of Cambridge will erect directional signs to the Museum.

Phyllis Smith suggested changing the membership age. By-laws Chairman J.D. Hanes will check on this and report at the next Quarterly meeting.

A motion was made by Phyllis Smith to adjourn at 2:30 p.m.

Janice Y. Hughes, Secretary

Ebon



Vases in the new Ebon line of black glass have matte-like finish with a dull sheen, gold decorations. Star vase, 5½" high, is \$4.50; Swallows, 9½" tall, is \$8. Cambridge Glass Co., Cambridge, O.

Crockery & Glass Journal
February 1954

THOUGHTS continued from page 3

would have to be done without a price guide. A price guide for this catalog would be a volume in itself. It seems that someone had the idea that we were withholding information by not publishing this catalog. So far as I know, the only pages that have not been reprinted in either the Welker books or the NCC books, have been reprinted in the CRYSTAL BALL since we acquired the catalog. There is a complete copy of this 1940 Catalog in the research area at the Museum for everyone to use.

We will be looking into the possibility of a separate Museum benefit auction of donated glass, or the possibility of selling some donated glass at the Annual auction. This has some drawbacks and some new rules would have to be adopted.

Also discussed were the auditing procedures; format for donating glass to the Museum; advertising signs for the four main entrances to Cambridge promoting our Museum; the purchase of four more standing showcases for the Museum; and, of course, the expenditures of money.

One of the Board members reported that it had been suggested to them that NCC was a Cambridge or Ohio "inside" group and that at

least one Quarterly meeting should be held outside the State of Ohio. I was asked to write an article discussing this suggestion for the CRYSTAL BALL. I will get this in the next issue.

Tomorrow is the August Picnic meeting. Hopefully we will have a good attendance -- I know there will be a lot of good calories!

WILLARD

1988 AUCTION

Saturday, FEBRUARY 27, 1988
THE SHENANDOAH INN
Old Washington, Ohio

CONSIGNMENT ITEMS WELCOME!

The 1988 All-Cambridge Glass Auction will be here before you know it! If you plan to consign glass, please contact Chairman Lynn Welker as quickly as possible.

If you wish to consign glass to this auction, please send your list of consignment glass to: Lynn Welker, 2 E. Main Street, New Concord, OH 43762. It would be best if you could have your glass to him by the November Quarterly Meeting.



The Cambridge Glass Company



NOVELTY FIGURES



No. 1 Bird



No. 2 Bird



No. 3 Bird



Squirrel



Frog



1371 Bridge Hound



No. 1 Butterfly



No. 2 Butterfly



No. 3 Butterfly

The DAZE

★ SPECIAL OFFER
to NCC friends
\$2. off the 1 year
subscription price,
when on this form
or copy of.

The Original, National monthly newspaper dedicated to the buying, selling & collecting of colored glassware and china including Depression Glass and the Elegant Glass (Cambridge, Heisey, Fostoria etc.). We educate and inform you each month with feature articles by top notch columnists, readers "finds", club happenings, show news and a multitude of ads. Find those missing pieces to your 30s, 40s or 50s pattern. Can't identify it? Perhaps we can help. "Keep up with what's happening with a subscription to the DAZE. Buy, sell or trade from the convenience of your easy chair.

Name _____ Street _____

City _____ State _____ Zip _____

1 yr. - \$15.00 2 yrs. \$29.00 \$1.75 single current copy
 Check enclosed MasterCard Visa

Exp. date _____ Card No. _____

Signature _____

Orders to D.G.D., Box 57NC, Otisville, MI 48463

Please allow 30 days for your first issue— Canadian subscribers, add \$1. per year and subscribe by charge card only! This Special Offer May Not Be Combined With Other Special Offers

WELCOME TO GLASS COUNTRY!

I-70

STOP AND SEE US

ROUTE 40

WE FEATURE GLASSWARE OF:
CAMBRIDGE, HEISEY, FENTON & FOSTORIA

Plus a full line of Art Pottery and a General line of Quality Antiques

Stage Coach Antique Mall

RT. 40, ONE-HALF MILE WEST OF I-70 NORWICH EXIT #164
MANY DEALERS-WIDE SELECTION-PLENTY PARKING

DORIS AND ROY ISAACS
BUY AND SELL
614-872-3720



7525 EAST PIKE
NORWICH, OHIO 43767

MON THRU SAT 10-5:30 SUN 12-5:30
SUMMER EVENING HOURS BY CHANCE

MANY DEALERS - PLENTY OF PARKING

SPRINGFIELD Antique Show & Flea Market

Clark County Fairgrounds

SPRINGFIELD, OH

Exit 59 on I-70

400-800 DEALERS

INSIDE AND OUTSIDE

Ohio's largest year round show with an
emphasis on quality antiques

9:00 AM - 5:00 PM

Admission \$1.00 per Weekend

Children under 12 FREE

NEXT SHOW
EXTRAVAGANZA
SEPT. 18-19-20

1987 SHOW DATES

SEPT. 18-19-20 EXTRAVAGANZA
OCT. 17-18 INSIDE & OUTSIDE

NOV. 14-15 INSIDE
DEC. 12-13 INSIDE

BRUCE KNIGHT, MGR.

For Information Write:
P.O. Box 2429, Springfield, OH 45501
Phone (513) 325-0053

Fenton • Akro • McKee

Cambridge • Heisey • Duncan Miller • Fostoria

The Depression Glass Club of Greater Rochester
presents its

11th Annual Depression Glass Show & Sale

Glass Repair • Raffle • Food

Saturday Sept. 19	Admission	Sunday Sept. 20
10 AM - 5 PM	\$2.00	11 AM - 4:30 PM

EISENHART AUDITORIUM

East Avenue and Goodman Street
Rochester, N.Y.

Depression Era Glass • Kitchen Ware • New Martinsville

American Pottery and China

"Nothing is so empty as a day without a plan."
ANONYMOUS

— Classified —

WANTED TO BUY: Stopper for Cambridge Barrel Set. **R. Clarke West**, 3433 Turner Dr., Springfield, OH 45504. Phone: 513/390-3617.

FOR SALE: #3122 Diane etched: 7 1/4" goblets (11); 5" juices (12); Sherbets (8); 6 1/4" under plates (5). **Barbara Jennings**, 134 Garden Parkway, Henrietta, NY 14467. 716/334-5066.

**VISIT YOUR MUSEUM
of
CAMBRIDGE GLASS**

HOURS:

Wednesday thru Sunday - 12:00 to 4:00 P.M.

MARCH thru OCTOBER

22nd Semi-Annual

**METROPLEX
GLASS SHOW AND SALE**

23 DEALERS FROM 7 STATES

**ARLINGTON
CONVENTION CENTER
1200 Stadium Drive East**

Between Six Flags Over Texas and Ranger Stadium
Interstate 30 Take Exit 360 or Hiway 157

SEPTEMBER 26 - 27, 1987

Saturday 10:00 am-6:00 pm
Sunday 11:00 am-4:00 pm

Depression Glass; Elegant Glass of Depression Era, Imperial, Heisey, Cambridge, Fostoria, etc. Pottery and Kitchen Collectibles

Admission \$2.50
Tax Included
Good Both Days

Collector's Loot
3816 Hastings Dr
Arlington, TX 76013
817-275-6342

**COLUMBUS ANTIQUE
FLEA MARKET
(ANTIQUES & COLLECTIBLES)**

Ohio State Fairgrounds - Lausche Building
Off I-71 Exit 17th Avenue - Columbus, Ohio

SEPTEMBER 13th

Sunday Only - 7 A.M. to 4 P.M.
Show Admission \$1.50 - Under 12 Free
150 QUALITY DEALERS

SELLING Advertising Art Deco, books, Cambridge, clocks, coins, collectibles, Depression glass, dolls, Fiesta, fine early furniture, Heisey, jewelry, lamps, oak furniture, post cards, pottery, good primitives, tools and print shop items



4214 North High Street, Columbus, Ohio 43214
(614) 267-8163 (614) 263-6830 (614) 885-2352

NEXT SHOWS: Oct. 11th; Nov. 8th; Dec. 13th

DEALERS



DIRECTORY

NOTE: When writing to the Dealers listed here, please enclose a SASE!

<p>MILBRA'S MATCHING SERVICE P.O. Box 363, Rio Vista, TX 76093 Milbra Long 817 / 645-6066 FOSTORIA * CAMBRIDGE * HEISEY * DEPRESSION ERA GLASSWARE BUY and SELL</p>	<p>BENICIA ANTIQUE SHOP 305 First Street Benicia, California 94510 OPEN 11 AM - 5 PM Closed Monday Z. E. LOPES 707-745-0978</p>	<p>THE MUTED SWAN ANTIQUES 5486 Peachtree Rd. Chamblee, GA 30341 Heart of Chamblee Antique Row Specializing in Cambridge, Heisey and Fostoria Bill & Pat Miller 404-451-7620</p>
<p>ANDREJCAK'S ANTIQUES 14533 Bayes Ave. Lakewood, Ohio 44107 Joe & Karen Andrejcek 216-226-3417 SHOWS ONLY — CAMBRIDGE — FENTON — CHINA</p>	<p>VISIT HISTORIC BENICIA and its 28 shops Off Interstate #80 North of San Francisco</p>	<p>SPECIALIZE IN CAMBRIDGE GLASS & ANTIQUES DOYLE L. BYINGTON 553 Sanchez Street, San Francisco, CA 94114 415/621-1854 Shows: Mail-Order - Buy & Sell - By Appointment</p>
<p>BOGART'S ANTIQUES Stagecoach Mall, Building #2 Norwich, OH 43767 ***** Jack and Sharon Bogart 614/826-7439 and 614/872-3514 ***** BUY - SELL - APPRAISE - REFINISH SEAT WEAVING - CLOCK REPAIR COPPER & BRASS POLISHING GENERAL LINE CAMBRIDGE GLASS</p>	<p>RICHARD BENNETT 64183 Warne Drive, Cambridge, OH 43725 Phone: 614 / 432-4483 SPECIALIZING IN CAMBRIDGE GLASS Stagecoach Mall - Bldg. 3 - Norwich, OH</p>	<p>BERKELEY ANTIQUES 69 Berkeley St., Boston, MA 02116 OPEN: Monday thru Saturday 11 AM to 5 PM GEORGE & FRANK 617/426-1048 DUNCAN, CAMBRIDGE, HEISEY, GENERAL LINE</p>
<p>THE GLASS CUPBOARD 39 Shire Oaks Drive Pittsford, New York 14534 Marcia Ellis Cambridge, Duncan Miller (716) 586-7596 Shows, Mail Order, Appt.</p>	<p>JUDY'S ANTIQUES Judy Bennett 422 S. Ninth Street (Corner of Jefferson) Cambridge, Ohio 43725 BUYING Ph. 614-432-5855 SELLING <i>Cambridge Glass my Specialty</i></p>	<p>"Happiness Is" - The Stultzs 3106 Warren Court, Glen Allen, VA 23060 Shows and Mail (Richmond Area) 804/262-1273 GLASS CIRCA 1890-1960</p>
<p>PEG AND DALE GOTSCHALL Antiques, Cambridge and Other Quality Glass 833 N. 6th St., Cambridge, Ohio 43725 Phone 614/432-5529 Stagecoach Mall — Bldg. 2 — Norwich, Ohio</p>	<p>GREEN ACRES FARM 2678 Hazelton Etna Rd., Pataskala, OH 43062 (State Route 310 North) Sat. & Sun. 1-7 PM 614/927-1882 Antiques, Crystal Glass and Collectibles</p>	<p>MOSTLY HEISEY 16 Clayton Place, Albany, NY 12209 Rhoda Curley 518 / 482-6272 SHOP and MAIL ORDER</p>
<p>THE HITCHING POST 7467 S. R. 88 Ravenna, OH 44266 Ph. 216-296-3686 D. McDaniel CAMBRIDGE — HEISEY — GENERAL LINE</p>	<p>BUY-SELL 513/390-3617 <i>Taste of Honey</i> Glassware—Collectibles CLARKE & CAROLE WEST 3433 Turner Dr. Springfield, OH 45504</p>	<p>1886 HOUSE East Schodack, N.Y. 12063 MAIL and SHOWS Laurie Cruise 518-477-5895 CAMBRIDGE - NORITAKE - AZALEA - D.G.</p>
<p>L & M ANTIQUES 1331 S.E. 4th Ave., Pompano Beach, FL 33060 Lydia & Cliff McNeil 305/943-2274 CAMBRIDGE & FOSTORIA OUR SPECIALTY Buy & Sell Shows Only</p>	<p>REMEMBRANCES 7597 Daphne Dr., No. Syracuse, NY 13212 Shirley S. Ladouceur 315 / 458-5297 ANTIQUES and COLLECTIBLES MAIL ORDER SHOWS APPOINTMENTS</p>	<p>MARGARET LANE ANTIQUES 2 E. Main St., New Concord, OH 43762 Lynn Welker 614/826-4418 CAMBRIDGE GLASS MATCHING SERVICE Hours Mon.-Fri. 1-5 PM or by Appointment</p>
<p>THE GLASS URN 456 West Main Street, Suite G. Mesa, AZ 85201 602 / 833-2702 Mail Order Shows Open Shop CAMBRIDGE, FOSTORIA, HEISEY, ETC.</p>	<p>AL STEELE Westerville, Ohio 614-882-6483 or 614-882-7124 Mail Orders and Shows Only HEISEY — CAMBRIDGE — PATTERN GLASS</p>	<p>YOU CAN ADVERTISE YOUR ANTIQUe SHOP HERE!</p>

Quarterly Meeting

NOVEMBER 7, 1987

"THE UPSTAIRS"

(Next door to Coney Island, at)

632 Wheeling Av.; Cambridge, OH

COCKTAILS (Pay Bar).....6:00 PM	DINNER \$9.00 - Choice of the following
DINNER (Sit Down).....7:00 PM	Baked Chicken....._____
BUSINESS MEETING.....8:00 PM	Baked Ham....._____
PROGRAM (To Follow Meeting)	Roast Beef....._____
	Please indicate your choice(s).

Name _____ Number of Reservations _____

RESERVATIONS MUST BE RECEIVED BY NOVEMBER 2ND
A RESERVATION FORM WILL BE PROVIDED IN YOUR OCTOBER CRYSTAL BALL

1988

DATES TO REMEMBER
(mark your calendar now)

FEBRUARY QUARTERLY MEETING
Friday, February 26th - 8 PM

ALL-CAMBRIDGE GLASS AUCTION
Saturday, February 27th - 10:30 AM
(Preview beginning at 9:30 AM)

15th ANNUAL N.C.C. CONVENTION
June 23, 24, 25, 26

13th ANNUAL ANTIQUE SHOW & SALE
June 24, 25, 26

AUGUST QUARTERLY MEETING
Saturday, August 6th - Picnic at Noon
Flea Market 10 AM - Meeting 1 pm

National Cambridge Collectors, Inc.
P. O. Box 416 Cambridge, Ohio 43725

FIRST CLASS MAIL

FIRST-CLASS MAIL
U.S. POSTAGE
PAID
So. Vienna, Ohio
45369
Permit No. 15