
GENUINE
HAND MADE
Cambridge
1901 © 1954

Cambridge Crystal Ball

Published monthly by the National Cambridge Collectors, Inc.
to encourage and report the discovery of the elegant and boundless product
of the Cambridge Glass Company of Cambridge, Ohio

Issue No. 188

December 1988



Wishing you a houseful
of old-fashioned
holiday cheer!

From your
Officers, Board of Directors
and
CRYSTAL BALL Staff

Cambridge Crystal Ball

Official publication of National Cambridge Collectors, Inc., a non-profit corporation with tax exempt status. Published once a month for the benefit of its members.

Membership is available for individual members at \$13 per year and additional members (12 years of age and residing in household) at \$3 each. All members have voting rights, but only one *Crystal Ball* will be mailed per household.

Back issues of the *Crystal Ball* are available (beginning with Issue No. 1, May 1973) for members only. Cost: 60 cents each or 12 issues for \$7.

1988-89 Officers & Committee Chairpersons

President	Mark A. Nye
Vice-President	Cynthia A. Arent
Secretary	J. D. Hanes
Treasurer	William C. Smith
Sergeant-at-Arms	Marlene K. Snyder
Acquisition	Lynn Welker, Bill Smith, Mark Nye, Joy McFadden, J.D. Hanes
Budget & Finance	David B. Rankin
By-Laws	J. D. Hanes
Convention	Mark A. Nye
Membership	Phyllis D. Smith
Museum—Facilities	Willard P. Kolb
Museum—Interior	Lynn Welker, Janice Hughes, Marybelle Moorehead
Non-Glass Items	J. D. Hanes, Cindy Arent, Judy Momirov
Nominating	Willard P. Kolb
Program	R. Clarke West
Project	William C. Smith
Public Relations	William C. & Phyllis D. Smith
Publicity	Cynthia A. Arent
Study Group Advisor	Phyllis D. Smith
1989 Auction	Lynn M. Welker
1989 Antique Show	Joy R. McFadden
1989 Flea Market	Marybelle Moorehead
Crystal Ball Editor	Phyllis D. Smith

Classified Advertising Rates

10 cents per word \$2.00 minimum
We cannot mix type size in classified advertisements. Abbreviations and initials will count as words. Payment in full **must** accompany all ads.

Display Advertising Rates

(Camera-ready ads preferred)	Members	Non-Members
1/8 page (9 items)	\$ 6.00	\$10.00
1/4 page (20 items)	10.00	15.00
1/2 page (20 items)	18.00	25.00
3/4 page	25.00	35.00
Full page (50 items)	33.00	45.00

Dealers Directory

Five-line maximum \$18.00 for 12 months

Cambridge *Crystal Ball* assumes no responsibility for items advertised and will not be responsible for errors in price, description or other information.

Advertising copy, articles, club news and notices must be in our hands by the 10th of each month to assure publication in our next issue.

Paid advertisements containing reproductions or new glass will not knowingly be accepted for publication.

Opinions or information stated in any signed article or letter printed in the *Crystal Ball* are those of the authors and may or may not agree with National Cambridge Collectors, Inc. The Editor reserves the right to refuse and to edit any material submitted for publication so as to conform with the editorial style of the *Crystal Ball*.

Please Address All Correspondence to:

National Cambridge Collectors, Inc.
P.O. Box 416 Cambridge, Ohio 43725

President — Mark A. Nye, 305/221-0343

Secretary — J.D. Hanes, 614/432-6794

Editor — Phyllis Smith, 513/323-3888

Please notify us immediately of any change in your address

Please enclose an SASE when requesting information.

CAMBRIDGE GLASS BOOKS FOR SALE

by National Cambridge Collectors, Inc.

* **COLORS IN CAMBRIDGE GLASS**
(128 pages - 60 color plates - fully indexed)
Hardbound with Price Guide \$19.95

* **1930-34 CAMBRIDGE GLASS CO. CATALOG REPRINT**
(250 page reprint of original catalog)
Hardbound with Price Guide \$14.95

* **1956-58 CAMBRIDGE GLASS CO. CATALOG REPRINT**
(164 page reprint of original catalog)
Paperback \$6.95

1985 COMBINED PRICE GUIDE
for 1930-34 & 1949-53 catalog reprints Postpaid \$5.75

*NCC MEMBERS ONLY: These publications are available at 10% discount

by Bill & Phyllis Smith

CAMBRIDGE GLASS 1927-1929
(66 page reprint of original catalog)
Paperback with Identification Guide \$7.95

by Mark Nye

CAMBRIDGE STEMWARE
(95 Stemware lines with 107 illustrations)
Paperback \$14.95

by Cambridge Buffs Study Group

NEARCUT
(108 page reprint of 1910 Cambridge Catalog)
Paperback with Price Guide \$9.95

by Mary, Lyle and Lynn Welker

CAMBRIDGE GLASS CO.
(120 pages of reprint from 8 old catalogs)
Paperback \$6.95

CAMBRIDGE, OHIO GLASS IN COLOR II
Spiralbound \$5.95

by Harold and Judy Bennett

1903 CAMBRIDGE GLASS CO. CATALOG REPRINT
(106 page reprint of an original catalog)
Paperback \$7.50

Address your orders to:

BOOKS
National Cambridge Collectors, Inc.
P.O. Box 416
Cambridge, OH 43725

Please add \$1.00 (P & I) per order.

(Not required for Price Guide)

Ohio residents please add 6% state sales tax.

DEALER DISCOUNTS AVAILABLE - PLEASE WRITE!

NCC Museum of Cambridge Glass

The museum is located on U.S. Route 40, one-eighth mile east of I-77 near Cambridge. Hours: 12 noon to 4 p.m., Wednesday through Sunday (March through October). Phone 614/432-4245. Closed Easter and July 4th.

Season's Greetings

From The President's Desk

Tradition! What would the Holiday Season be without tradition? I remember reading some years ago, a story, fact or fiction I cannot remember, with a moral that amounted to, Christmas (or for that matter any occasion) is what you put into it.

Nothing just happens. Years of family gatherings create a celebration that is looked forward to for almost all of the preceding twelve months. Young couples, or single individuals, separated from their families by countless miles, must strive to start their own traditions and means of celebrating; be it Christmas or other religious or secular holidays. If you don't, holidays can be a sad and lonely time.

Since I live a great distance from my brothers and sisters, do not have my own family, and most years find it impossible to travel north to visit a brother or sister for the Holidays, I have my own traditions which include serving an elaborate dinner to my closest and dearest friends on Christmas Eve. Later, some of us attend traditional Midnight Services, at a site of our own choosing. The afternoon of Christmas Day finds much the same group at another home enjoying another holiday meal, this one usually being Italian. Most years I spend Christmas morning preparing the desserts to be eaten Christmas Night, after the latter meal.

Other traditions I follow include making my own plum puddings, baking several types of cookies, including one that is traditionally associated with a Jewish holiday occurring in the Spring, and the German cookie known as Lebkucken. Two trees usually decorate my home. One as a showpiece, and one that is a traditional tree, a real tree decorated with multicolored lights and ornaments, some of which I have had since I first celebrated Christmas in Florida almost 30 years ago. This tree reminds me of the ones we had at home during my childhood and I still carry the scar incurred during a tree cutting, many years ago. Many other things, little and big, also make up my traditions, including preparing dates stuffed with walnuts or peanut butter and rolled in sugar.

If the giving of gifts is part of your tradition, don't forget the N.C.C. Christmas Shopping Suggestions published on page 15 of this issue.

Holidays are time for remembering Holidays Past. Back to the time of childhood, high school, college and the start of your own families. Do not be sad, for these are fond memories, even though there are family and friends no longer here to help in the celebration. I sometimes shed a small tear as I think back to Christmas Past; it is wiped away and then on to Christmas Present and Future.

This is the time of year to think of others and part of many traditions is to share what you have with others less fortunate; and in doing so bring cheer and pleasure into the life of those who, without our help, may not be able to provide for the needs of themselves or their families.

Do not forget this: it does not matter what you share with others, big or little, great or small; what counts is you are sharing what you are capable of doing.

We may not all celebrate the same holidays, or in the same manner, but we can walk side by side as we go to our respective places of worship and family gatherings. To each and every one and to your families and friends, I say

Merry Christmas, Happy Hanukkah, Happy Holidays.



Transparent Colors

PART II

by MARK A. NYE

Crockery and Glass Journal, in the issue dated May 14, 1925, published an article entitled "New Designs in Glassware Shown by Cambridge Glass Co." It appears to have been written by a staff writer and not by Cambridge. In this article are several references to a color called "amber glow" and late in the article is this description:

"The last shade <amber glow>, by the way, is a new amber tint of a rich deep hue, and is a color of wonderful warmth and of strong appeal in the many numbers in which it is featured."

References to this color continue to appear during 1925 and in 1926 Cambridge advertisements began to contain references to it with a slightly different spelling, "Amber-Glo." For the next three years, Cambridge advertising included this color name with the last found reference dated May 1929. Concurrent examination of amber colored items from various time periods (excluding known Mocha and Maderia pieces) will reveal several shades of color, indicating formula changes at various times over the years. Thus the appearance of the name amber-glo may have signaled a change in the formula, one that produced a different amber tint than previously used by Cambridge.

Included in the May, 1925 article, cited above, was a reference to a console set being available in "green, amber glow, blue or mulberry."

"A new console set introduces a pair of dolphin candlesticks combined with a tall rose jar in plain or twisted optic, in four colors, green, amber glow, blue or mulberry, the jar having black cover and stand."

Again, from the same article comes this statement:

"For the dressing table there comes a charming set consisting of two graceful perfume bottles with drip stoppers and a large powder box. These come in four

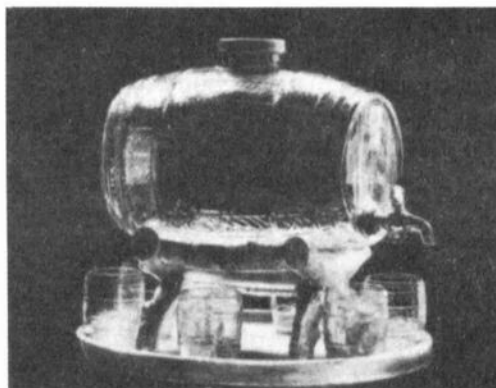
decorations and three colors, blue, green and amber glow."

Prior to this, China, Glass and Lamps of January 12, 1925, in describing the annual Pittsburgh Exhibition contained this statement regarding Cambridge Glass Company:

". . . These encrustations are offered on assortments of solid and transparent colors, the latter including amber, mulberry and cobalt blue.

From the May 5, 1925 issue of China, Glass and Lamps comes the following:

"Among the new samples at their display room . . . is an all-glass liquor set in the form of a keg, set on a black glass base like a rustic wooden bench, a glass tray and 6 whiskey glasses. The tray is of black glass like the base for the keg and the keg itself and glasses may be had in blue, topaz or amber."



#1 Keg Set

(from 1927-29 Catalog Reprint)

On the cover of the June 8, 1925 issue of China, Glass and Lamps was a Cambridge advertisement for a decanter and glass stated to be had in "amber, Emerald, Mulberry and Blue."

The next month, June 1925, saw Crockery and Glass making reference to a blue color in these statements:

"Among the latest additions to their lines are three-piece vanity sets, each consisting of footed powder box and two perfumes. They come with decorative floral bands in amber glow, mulberry, emerald and the new "Night" Blue, a recent addition to the colors brought out by the Cambridge factory."

continued on next page

Continued



**No. 589/189 Three-Piece Vanity Set.
Furnished in Crystal, Amber, Emerald,
Mulberry and Blue. By far the best set on
the market today.**

(China, Glass & Lamps, June 29, 1925)

"There are also delightful new stemware numbers, console sets and other fancy items in the 'Night' Blue which is a color of great charm, especially in table ware of delicate modeling."

References to a blue color continue through 1925 and into early 1926. It is generally believed all of the above references to "blue" refer to the color now designated by Cambridge collectors as Cobalt Blue II. The fact the term "Night" is enclosed in quotation marks in the original reference leads me to believe this was an invention by the author to describe the color and was not an official name. Cambridge experts believe the color Cobalt Blue II was discontinued sometime during 1926.

During 1925, 1926 and 1927, the most commonly mentioned colors in Cambridge advertising were: amber-glo, emerald, and peach-blo. Seldom mentioned were: ebony, mulberry, blue and topaz.

From a column published in the September 13, 1926 issue of China, Glass & Lamps comes this paragraph with its reference to another Cambridge color.

"The illustration shows the glass place card in decoration No. D160 which has a pressed wreath effect covered with gold. the cards also can be had with gold lines on each side of the wreath and they also are furnished plain with neither gold nor wreath border. All the popular colors are available in these place cards, including Amber-Glo, Emerald, Peach-Blo, Blue Bell and Ivory."

The next reference to blue bell is found a year later, in the September 12, 1927 issue of the same journal.

". . . There is one liqueur set, with a handled tray and six tiny tumblers, the tray in peach and the tumblers in six individual colors - amber, emerald, peach, topaz, bluebell and amethyst - with a particularly inviting aspect. . . Also on the list is a fine cocktail set on a glass tray, naturally on a larger scale than the liqueur and whisky sets, consisting of a large shaker and the tray, to be had in peach, amber or emerald, and six cocktail glasses, in individual colors of amber, emerald, peach, topaz, bluebell and amethyst."

Indications are the color Bluebell was only in production for a limited amount of time during the late 1920s. The color was revived during the early 1940s, for a short time, under the name Tahoe Blue. With little or no change in the formula, it was used in Harlequin sets that featured eight colors. After the molds for pressed Cascade stemware were created, the color was once again tried, but apparently never reached the stage of once again being a production item.

July 23, 1928 saw the following headlines and article published in China, Glass and Lamps:

"Cambridge To Show New Blue Glassware"

"Simultaneous Display of new Shade of Pressed and Blown Table and Stemware to be Made in Leading Cities. New Blue Color is Unusually Attractive."

"A new color in transparent glass will be shown August 1 by the Cambridge Glass Co. of Cambridge, Ohio. ...The new transparent color is called 'Willow Blue.'

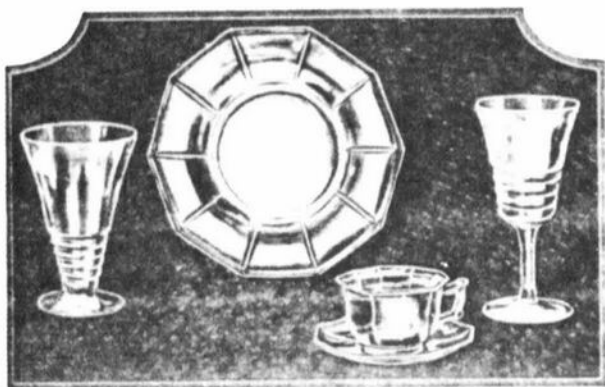
Before placing this new color glassware on the market, the Cambridge Glass Co. made a thorough survey of merchandising conditions and decided that a blue glass, "truly blue" would fill a need of the trade. Having reached this decision, the next step was to develop a blue glass up to the standard and quality desired.

For some months, the Cambridge Glass Co. has been working on this new blue shade. Rather than rush into the market, the chemists and glassmakers at Cambridge experimented with various batch

continued on next page

Continued from last page

combinations. The laboratory work was completed several weeks ago and manufacturing tests have been so favorable that the company feels at liberty to announce definitely the introduction of "Willow Blue."



Cambridge Glass Company's new "Willow Blue" Glass

(Crockery and Glass Journal August 1928)

The color of the new glass is totally different than any now on the market. It is not a deep color, rather it is a strong pastel shade. In the blown pieces, such as goblets, footed tumblers and so on, the color is rather faint than strong. There is just enough color to give fascinating shadows of blue. Pressed ware in the new color, such as plates, bowls and heavy pieces, is free from preponderance of color in one place. A plate, for instance, when viewed alongside a goblet before strong sunlight at a window, shows no 'bunching' of color and to the eye is of the same color and depth of color as the thin-blown goblet. This, of course, leads to uniformity.

'Willow Blue' is not a heavy color. At a distance, it has the appearance of quality crystal with a blue shadow. It is hard to express just exactly the color-shade in words. It is possible only to intimate the beautiful, consistent coloring of this new glass.

The exact shade of blue also is hard to describe, but it can be said that it virtually matches in glassware the blue of the very popular all-over Blue Willow and other decorations on semi-porcelain and china.

The coloring is more whimsical and fanciful than solid. It is suggestive more than compelling. But such factors add to

its attractiveness, because pieces in the new color do not smash the eye or offend the color sense with glaring preponderance of color. While the color, of course, is in the glass, many of the uninitiated might believe it is applied faintly as a light blue iridescence.

The new color is most adaptable to the great variety of shapes of staple and novelty glassware made by the Cambridge company. It is certain the new color will be welcomed as a most fitting addition to the Cambridge line of colored glass, which includes, 'Peach-Blo,' 'Emerald' and 'Amber-Glo.'

We have no doubt buyers will want to see the new 'Willow Blue.' As mentioned before, the new glass will be on display simultaneously in the Cambridge Glass Co. show rooms in New York, Chicago, Philadelphia, Boston and Detroit on August 1."

To Be Continued

Auction Update

As we finish this issue of the CRYSTAL BALL, we must include this sad note. Our Auction Chairman Lynn Welker informs us that the Auction List, etc., has had to be put on "Hold" for what is hoped will be a very short time.

Lynn's father, Lyle W. Welker, is very ill and hospitalized at this time. Therefore, Lynn and the entire Welker family are spending most of their time with him at the hospital.

If you have not had a reply concerning your auction glass consignment, please be patient. Lynn will be getting things completed just as quickly as he can.

We all send our "Best Wishes" to Lyle for a quick and complete recovery.

FEBRUARY QUARTERLY MEETING
and AUCTION PREVIEW
Friday, February 24, 1989 - 8 PM

ALL-CAMBRIDGE GLASS AUCTION
Saturday, February 25, 1989 - 10 AM
Preview beginning at 9 AM

PLEASE TURN TO PAGE 14

Club News

National Cambridge Collectors, Inc.
Quarterly Meeting
November 5, 1988
The Upstairs, Cambridge, Ohio

The meeting was called to order at 8:25 pm by President Nye. In attendance were 11 Board members and 32 Club members and friends.

The minutes of the previous meeting held on August 6, 1988 were read by J.D. Hanes and approved.

The Treasurer did not give a report.

COMMITTEE REPORTS

MEMBERSHIP: Chairman Phyllis Smith reported that we now have 930 Individual, 355 Associate and 7 Honorary members, for a total of 1,292. She reminded everyone that a membership to N.C.C. is a great Christmas gift.

CRYSTAL BALL: Editor Phyllis Smith stated that they are running out of topics to write about. She asked for ideas from the membership. She also stated that they would do a question and answer column if requested. One recommendation for this column is that a photograph be sent of the item. Mark Nye asked for articles for the CRYSTAL BALL also.

STUDY GROUP ADVISORY: Chairman Phyllis Smith stated that she has been receiving regular reports from the Cambridge Cordials and the Miami Valley (Ohio) groups. She also reported that the Cambridge Nudes and the Tuscan Crowns have started meeting again during the summer and that the Michigan Caprices would start again in the near future. Mark Nye stated that the Florida Everglades were meeting on a quarterly basis.

BY-LAWS: Chairman J.D. Hanes reported on a proposed change to the By-laws concerning the Study Group Advisory committee. The proposed change will be printed in a future issue of the CRYSTAL BALL and will be voted on at the Quarterly meeting in February.

AUCTION: Chairman Lynn Welker reported

that the starting time of the Auction will be 10 am instead of 10:30 am. The Preview on Saturday morning will start at 9 am. President Nye reminded everyone that the Quarterly meeting will be held on February 24, 1989, and the Auction on February 25, 1989.

CONVENTION: Chairman Mark Nye stated that we would be stressing the Glass Show as an Elegant Glass show and not an All-Cambridge show. He stated that the theme for the Convention will be a dual theme. It will be "Cambridge: The War Years" and "Cuttings." The war years are termed 1940-1948. He stated that we seem to know the least about this period, and about cuttings. A speaker has not been decided on yet. He stated that there would probably only be a mini-display at Convention instead of the larger display. The reason being that we have the Museum and that Convention attendees could see the items from that period at the Museum. Sue Rankin stated that it was acceptable to do this, however, we should have the free standing show-cases displaying glass of the Convention theme.

FLEA MARKET: Chairman Marybelle Moorehead reported that it would be at the same location as last year.

PUBLIC RELATIONS: Chairman Bill Smith reported that they had attended the Lakeland Florida show and that Mark Nye had a Cambridge display, next to their information booth, which generated good traffic. They also attended the Dearborn Michigan show and the Western Reserve show in Cleveland. Both shows did well, as they generated over \$600 in business and signed up 17 new members.

BUDGET & FINANCE: No report.

MUSEUM INTERIOR: Lynn Welker reported that the Board of Directors has authorized the purchase of new free-standing showcases for the rear of the Museum. The approximate cost will be \$6,500. This will allow more display area, as the meeting room in the rear of the Museum will be removed for more display area. He also stated, that possibly a Rosepoint display will be added in the near future, along with a display of some of the paper work from the factory. Janice Hughes stated that, starting the first of the year, they will be washing the glass in the Museum and that volunteers are needed to help.

continued on page 12

Cleaning of Molds

or
HOW TO GET COVERED WITH RUST DUST
in THREE EASY STEPS!

by J.D. Hanes
Co-Chairperson
Non-Glass Items Committee

In the beginning, there was a storage building filled with items from the Cambridge Glass factory. The items consisted of molds, snaps, punties, gauges, miscellaneous tools and paper records.

Next, there were two naive member/collectors who asked "could they be of help?" That is a daring question to ask Bill Smith or Mark Nye!

After spending last fall cleaning gauges, Cindy Arent and myself found ourselves, along with Judy Momirov, being appointed as the co-chairpersons of the "Non-Glass Items" committee. Step one is now completed - asking to help!

Step two is to go to the storage building and get out some molds or tools to clean.

Step three is to clean these with a wire brush or motor driven wheel.

There you have it! Covered with "Rust Dust" in three easy (?) steps!!

In reality, doing this kind of work is really interesting. All of the people who have worked on the cleaning of these items have learned things that they did not know, or even realized they wanted to know.

For example. Some did not know that tools and molds were re-tooled to be used for different items. Also, learned rather quickly, was the fact that the men who moved these molds must have been "very strong!" These molds are extremely heavy.

If you have been fortunate enough to take one of the tours through the old Cambridge Glass factory in the past few years, and wondered why the steps from the mold room to the main factory were so warped and grooved by those who trod upon them - we can now understand. Those molds were "HEAVY!"



Doyle Hanes, Judy Momirov and J.D. putting the N.C.C. tow-motor to work lifting a box of heavy molds.

There is one thing that we really do need from you, our fellow members - HELP!

It isn't necessary that you get involved in collecting "rust dust," unless you really want to get into the physical part of cleaning these items. We also need people who can write down the information from the items, as they are cleaned. There are a great many paper records that need to be sorted and recorded. Light or heavy work . . . there is plenty of both types to suit your individual skills!



Sally Bennett and Judy Momirov collecting their fair share of "Rust Dust." If they look tired, it is only because they are!

If any members are going to be in the Cambridge area and would like to give us
continued on next page

Continued

some help, please let us know. We can be available most evenings and on weekends.

We realize, of course, that it is now too cold to be doing this type of work in an unheated building, but please keep us in mind next spring. As soon as the weather breaks and we can work in comfort, we will be back at it, full force.

Please, write to us in care of the club post office box (see page 2), or call us in the evenings. My phone number is (614)432-6794, and Cindy's is (614)439-4582.



Hard at work - Doyle Hanes, on his knees, J.D. making sure he does it right, and Rich Bennett supervising the job!

If you are going to be in the Springfield, Ohio, area next spring, I'm sure that Bill Smith or Clarke West could use your help in cleaning etching plates. You can reach them via the club post office box, or by calling them. Bill's number is (513)323-3888 and Clarke's is (513)390-3617.

On the following page you will find a complete listing of the molds we have inventoried thus far. Needless to say, there are many parts to molds mixed in with these. Until we get all of them inventoried, we really do not know what complete molds we own.

I'll try to keep you updated as we go, so until the next report, keeping collecting Cambridge!

Photo's courtesy of Judy Momirov

ADDITIONAL MUSEUM ACTIVITES

The weekend of October 28th thru 30th saw some additional activity at the N.C.C. Museum storage building, a home in Chantilly, Virginia, and during the many hours and miles between.

On Friday morning, October 28th, Bill Smith and his son Ed started from Springfield, Ohio, in Bill's pick up truck, pulling a rented horse trailer . . . on a most unusual journey. They were headed for Chantilly, Virginia, and the home of N.C.C. member Janet Sanders.

They were to pick up, and haul back to the Museum, close to two tons of glass shelving, showcase doors, wall brackets, miscellaneous hardware, etc. A gift to N.C.C. from Janet!



Helping to unload "glass delivery" at the Museum storage building is: J.D. Hanes (white hat and coat), Ed Smith, Bill Smith in truck, and Sally Bennett.

When they arrived at the Museum, around noon on Sunday, they were greeted by a work party from the Cambridge Cordials Study Group. In no time at all, they were able to unload the heavy cargo and get it safely placed in the storage building. There it will rest until such time as it is needed, for building additional showcases, for display in the Museum itself.

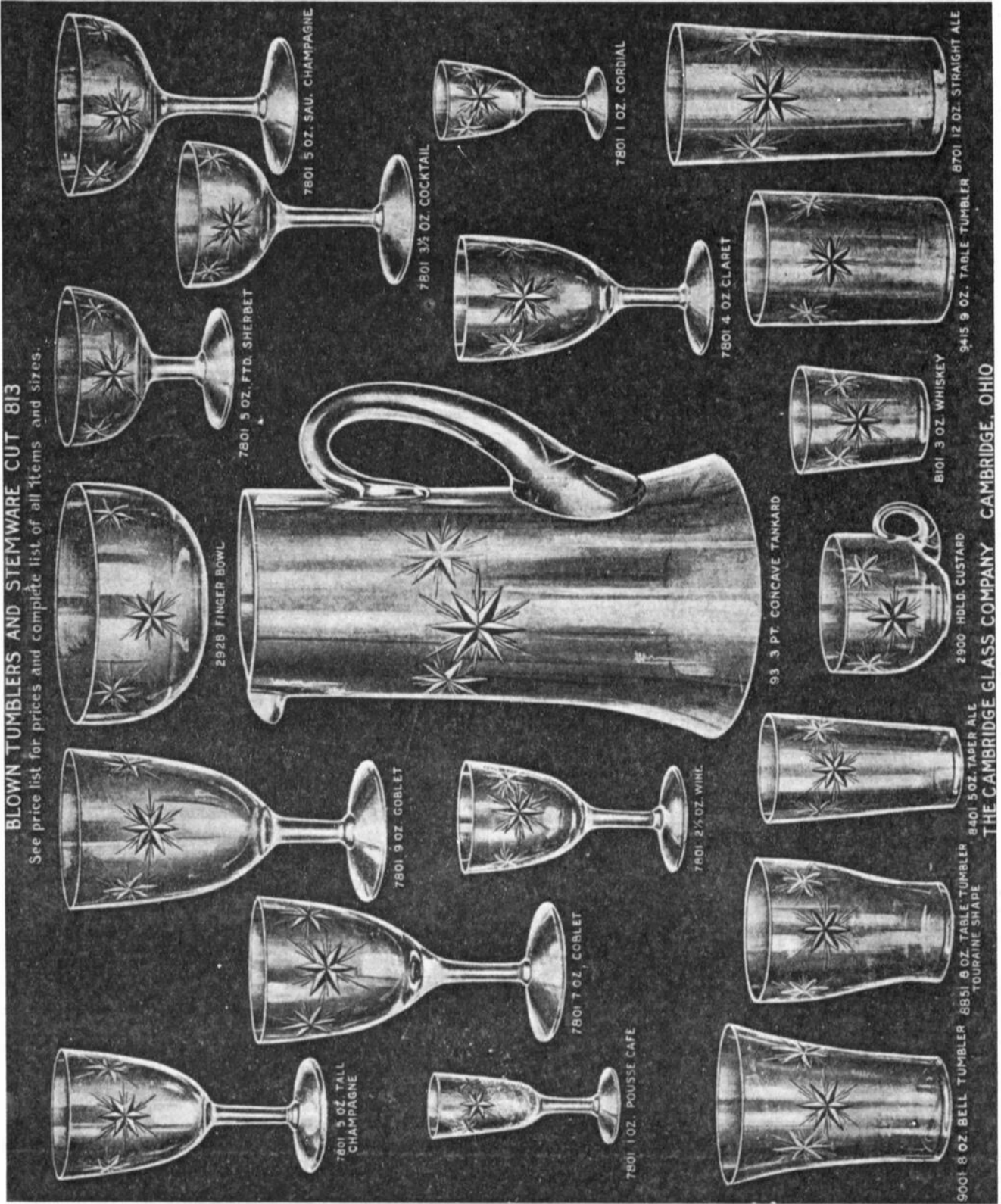
We are happy to report that only one small shelf was broken while handling this large amount of glass. Of course, Bill and Ed ran into several problems, but all were worked out and the glass was safely delivered. Many thanks go to Janet for her generous donation, and to Bill and Ed for delivering same!

LIST OF CLEANED MOLDS - FIRST REPORT

<u>NUMBER ON MOLD</u>	<u>DESCRIPTION ON MOLD</u>	<u>REFERENCE</u>
1957/112	SALT	Sonata Shaker
0688	SUGAR (Farber type)	Private Mold
940	SUGAR	Cambridge Round Sugar 30-34 Reprint, pg. 40
2590/506	BUTTER COVER KNOB	Last Shown in 1906 Catalog
1512	BASE	Not Identified
170	CRYSTAL	Probably Molasses Jar
3900/117	CUSTARD	Probable Item # Misprint Probable that this is Corinth cup - 3900/17
2580	M J COVER	Mustard Jar ? ?
26	BOBECHE	? ?
495	BOULLION	Cambridge Round 30-34 Reprint, pg. 34
0610	COVER	Private Mold
F717 712	ASH TRAY	? ?
231/2	A D CUP PLATE	After Dinner
071	CIGARETTE BOX	Private Mold
138 CR 2	CR	Cambridge Round Cream 30-34 Reprint, pg. 34 Mold #2
4000 616	COVER	Cascade Cigarette Box Cover
4000 616	CIG BOX	Cascade Cigarette Box
-----	TURTLE	
3500 6R 78	-----	? ?
1203	2½ OZ	Tumbler 30-34 Reprint, pg. 33-B-8
4000 217 488	CUP	Cascade Punch Cup
5000 40	CR	Heirloom Cream
5000 40	SUG	Heirloom Sugar
4000 41	SUG	Cascade Sugar
5000 44	CREAM	Heirloom Cream
5000 14	CR	Heirloom Cream
4000 40	CRM	Cascade Cream
3500 464	SMALL URN COVER	Gadroon
578	VASE	? ?
602 415	MOLASSES CAN	May Not Be Cambridge
1937	COCKTAIL	Pristine
0505	NAPPY	Private Mold
4000	SAUCER	Cascade

BLOWN TUMBLERS AND STEMWARE CUT 813

See price list for prices and complete list of all items and sizes.



THE CAMBRIDGE GLASS COMPANY, CAMBRIDGE, OHIO

CLUB NEWS continued from page 7

NON-GLASS ITEMS: Chairman J.D. Hanes reported that they have been cleaning molds. Since the weather has turned cold they will not be working at the building, but will be taking some of the paper work home to catalog during the winter.

OLD BUSINESS: None.

NEW BUSINESS: President Nye discussed the 1940 Catalog. He stated that some members felt it should be printed. Bill Smith has checked into this. The catalog is approximately 375 pages and the estimated price per copy for a paperback edition would be \$25. It is opinion that this would not hold up well due to the size. The catalog would also contain pages that have already been printed in the CRYSTAL BALL. It was the general consensus not to try and reprint it at this time.

President Nye reported that by February we hope to have a Rosepoint book. It will have illustrations and text pages. If this book does well, it is possible to do books on all major lines, etchings and cuttings. The estimated price for the book is \$12. The price guide will be separate.

President Nye then discussed the subject of Fund Raising. He reported that at the Board of Directors meeting, approximately \$10,000 had been appropriated for Museum display cases, Museum glass, and other projects. He also stated that if members had read his letter in the November CRYSTAL BALL it was looking to the future in the way of Museum space and Museum owned glass. He had listed several possibilities on Museum space. He stated that if every member of the club put aside one dollar every week for the next two years, and donated it to the club, we would have over \$100,000.

David Rankin stated that he thought we need to have specific plans for the money if we are go get total support. Bill Smith stated that we could borrow against our equity and go into debt. Sue Rankin asked if the membership was aware that a majority of the glass in the Museum is not Museum owned. Al Tuttle stated that he would rather see us spend money raised on whatever the need, instead of paying interest to a bank. President Nye stated that by February he will have a formal proposal as to Fund Raising and what it will be used for.

Bill Smith suggested that if anybody is making out a Will, that it would be nice to remember the Museum in it. He stated that it would be nice to have a Memorial Fund built up to use for Museum purchases.

The meeting was adjourned at 9:05 pm.

"Show & Tell" was conducted by Lynn Welker.

A program on Paperweights and Glass History in Guernsey County was given by Erna Burris of the Degenhart Paperweight and Glass Museum, Cambridge, Ohio.

J.D. Hanes, Secretary

Study Club News

STUDY GROUP #11 - ILLINOIS "THE CAMBRIDGE NUDES"

The September meeting of the Cambridge Nudes was held in the home of Roy and Jo Ann (Schliesmann) Nelson. There were six members and one guest present at this summer Barbecue meeting, and a good time was had by all.

There was no planned meeting, as such, and no "Show & Tell." The resignation of Neil and Eddie Unger was read. They felt their time commitment was such that this was the best decision.

The Nudes also held a meeting during the 1988 Convention, with 13 members present.
submitted by Jane Kersey

(Editor's Note: We are happy to be able to report that our good friend Jane Kersey has received a clean bill of health from her Doctor, concerning her recent bout with cancer. Great News, Jane!

STUDY GROUP #13 - SOUTH WEST OHIO "MIAMI VALLEY, OHIO"

The October meeting of the Miami Valley Ohio Study Group was held on the 11th at the Huber Heights Library, Huber Heights, Ohio. There were 13 members present.

Our Nominating committee was formed with Helen Kennon as Chairman. Our program on

continued on page 13

"Figurals" was presented by Bill Smith. The display included such items as: bookends, novelty figures, covered turkey, various flower frogs, Dresden Lady, dog and cat bottles, and the Dolphin candlestick.

The "Show & Tell" portion of our meeting included: Jade rope candlesticks; Ivory stick vase with enamel decoration; muddlers; Oriental girl (two bun); amber nite jug etched Tulips; a bluebell 13" Draped Lady; and a #3400 cup and saucer in experimental blue.

Miami Valley Ohio Study Group met November 1st, at the Huber Heights Library. There were 17 members present.

Discussion included our Christmas Dinner meeting which will be held jointly with the local Heisey Study Club, December 6th, at Anticolie's restaurant, Dayton, Ohio.

We held election of officers and they are: Phyllis Smith, President; Jim Kennon, Vice-President; Clarke West, Treasurer; and Vicki Wollenhaupt, Secretary.

We also set up our next three programs and they will be: January, the "Process of Etchings" and how they are created. Bill Smith will lead this discussion. Frank Wollenhaupt will be doing "Examples of Etchings" in February. The March program "Reactions of Glass to Black Light" to be led by Jim Kennon.

"Show & Tell" items for this meeting were: crystal Tombstone bookends with gold etched Knight on horseback; Pair of black 2-light candlesticks by L.E. Smith; a black lamp, maker unknown; a #1186 12-1/2" 2-handled plate, Rock Crystal engraved #1022 Plymouth; a #993 12-1/2" bowl, Rock Crystal engraved #979 Vesta; an ash tray/candlestick in a transparent odd purple color; a moonlight blue egg cup; a topaz perfume; a crystal Geisha Girl with the flower frog screw-on base; a Farber Nude with a gold wash that had a carmen insert. Sally Hayler shared the October 1988 AAA magazine that had a photo of Cambridge glass in it.

The program for the evening was presented by Dave Rankin. We viewed the slide program on "Cambridge Stems."

submitted by Vicki Wollenhaupt

Warmest greetings of the Season

STUDY GROUP #14 - CAMBRIDGE, OHIO "THE CAMBRIDGE CORDIALS"

Contact person - Judy Momirov

Phone: 614/432-2896

The October 15th meeting of the Cambridge Cordials was held in the home of Judy Momirov. There were nine members and one guest present.

Cindy Arent called the meeting to order and a brief discussion was held on the job of cleaning items in the storage building at the Museum. She stated that the Miami Valley Study Group would help us on a weekend. The date will be October 30th if that is acceptable with them. J.D. Hanes will check with them on this date.

Our topic of discussion for the evening was the History of the Cambridge Glass Company. Judy has done a lot of research into this and had some reprints of articles and books that had different information. She had also found some information on other glass factories, and pottery and china factories that had operated in the Cambridge area.

Our guest, Chryse Dascoulias, stated that at the Ohio Historical Center there is a display of Cambridge Art Pottery and Cambridge Glass. There is also a display of Cambridge Glass at the Fashion Museum at Kent State University.

It was also discussed as to how civic minded Mr. A.J. Bennett was, in donating Cambridge Glass to local churches for the purpose of serving meals and receptions.

Rich and Sally Bennett inquired if any of us had seen the movie "Prizzi's Honor." According to them, the movie has a kitchen scene in which an 80 oz. Ball jug with Sterling overlay in a lace design, is shown. It was also restated that the movie "The Sting" shows two Flying Lady bowls on a bar in one of its scenes.

After this discussion session we moved on to "Show & Tell." Items brought for show, were: a 3-1/2" ebony swan with Sterling overlay; a

continued on page 14

— Classified —

FOR SALE: Topaz 9-1/2" panel bowl \$22. #935 64 oz. emerald green jug etched #724 \$40. Cleo etched blue center handled tray \$37; cups & saucers (8) \$18 each; cream and sugar \$30. Decagon moonlight blue #878 candleholders, pair \$30. Rosepoint etched #647 candleholders, pair \$45. Priced each and as stated. UPS Extra. **Robert Taylor**, 80 Middle St., Apt. 21, Gloucester, MA 01930. Phone: 508/281-4637. Thank you all for your business in 1988. Hope you all will have a Peaceful Holiday Season.

FOR SALE: Cambridge Glendale cutting. 8 juices; wines; waters; teas; and plates. 6 champagne/sherbets at \$10 each. Better price for entire lot. **Patton House**, Box 5117, Louisa, VA 23093. Phone: 703/967-1181.

FOR SALE: Apple Blossom goblet \$22.50. Candlelight #3111 sherbets (5) \$20. Caprice, crystal: sherbets (7) \$12; footed ice tea \$17; individual ash trays w/place card holders (12) \$7.50; 6" plates (4) \$6; 7" plates (18) \$7.50; 9" plates (20) \$20; 3-toed covered candy \$35; champagnes (5), ftd. waters (10) \$16; cocktails (4) \$20; ftd. juice \$15; wine \$25; 13-1/2" 4-ftd. plate \$35; cup & saucer sets (14) \$15. Caprice, blue: saucer \$6; 3-part relish \$35; ftd. ice tea \$30; sherbet \$25; 6" plate \$12. Caprice, pink: 6" 2-handled lemon plate \$30. Cascade: goblets (2), ftd. juice (4) \$15. Chantilly: #3600 sherbet \$20; #3625 champagnes (4), sherbets (3) \$20, ice tea \$22.50, wines (8) \$35. Daffodil #3779 champagne \$20. Diane gadroon 3-part celery/relish \$35. Elaine #3130 sherbets (8) \$18; #3500 ice teas (3), champagne, sherbets (8), 4-3/4" flat tumblers (5) \$20. Mount Vernon wines (2) \$12.50. Portia: #3126 champagne \$20; #3121 champagnes (4) \$20. Rosepoint: #3500 low goblets (5) \$28.50, wine \$45; #3121 low goblets (3) \$25; sherbets (4) \$20; #3400/54 cup and saucer sets (2) \$35 and #3900/17 sets (6) \$35; #3900/66 14" plate \$65. Swans 3-1/2": crown tuscan \$35; ebony \$50; amber \$35. Sea gull \$40. All prices each, plus shipping. Also Duncan, Fostoria, Heisey, etc. Write specific wants. SASE required. **Betty J. Anonby**, Crystal Matching Service, Route 2, Box 58A, Kenyon, MN 55946. Phone: 507/789-5837.

— Classified —

BUYING: Moonlight Caprice or Rosepoint by Cambridge; Rose or Orchid by Heisey; & June, American, Fairfax, Versailles, Trojan, etc., by Fostoria. **Nadine Pankow**, 207 South Oakwood, Willow Springs, IL 60480. 312/839-5231.

FOR SALE: #3122 Diane etched: 7-1/4" goblets (11); 5" juices (12); sherbets (8); 6-1/4" underplates (5). Make offer. **Barbara Jennings**, 134 Garden Parkway, Henrietta, NY 14467.

WANTED: Perfect peachblo/dianthus pink bridge hounds. Also amber, amethyst and blue. **Mark E. Westerfield**, 6336 N. Frostwood Parkway, Peoria, IL 61615.

STUDY CLUB NEWS . continued from page 13

crystal tumbler with enameled Flying Fruit; a #3121 comport in crystal with gold encrusted Rosepoint; and a 32 oz. Ball jug in crown tuscan, gold encrusted Chintz and acid mark.

The next meeting date has been changed to November 12th at the home of Cindy and Mike Arent; and the December meeting will be December 17th at the home of Doyle and J.D. Hanes. The topic of discussion for November will be "Nearcut."

submitted by J.D. Hanes

In Memoriam

LYLE L. WELKER
Died November 20, 1988

It is with great sorrow that we extend this expression of sympathy to his wife Mary, son Lynn and other family members.

"We have not lost the memory of him nor the love we had for him, but rather it is the pleasure of his company we have lost. We will be lonely for him and someday we shall be reunited with him, to part no more. Do not grieve for him, for he has exchanged his pain, suffering and sorrows for peace and rest with our Heavenly Father."

N. C. C. CHRISTMAS SHOPPING SUGGESTIONS

Earliest postmark will determine purchaser in case of insufficient quantities.

BOOKENDS

(add \$3 each for p&h)

- #1129 LION, Amber, 2nd of the
Museum Reissue Series.....\$ 38
- #1129 LION, Amber Frosted,
Special Treatment Item.....\$ 75
- #1128 SCOTTY, Black Frosted
3rd of the Museum Reissue Series...\$ 30
- #1119 EAGLE, Cobalt Blue,
4th of the Museum Reissue Series...\$ 30

CONVENTION FAVORS

(add \$1.50 each for p&h)

- 1980 - Paperweight, Windsor Blue,
w/N.C.C. Logo & date.....\$ 16
- 1982 - Paperweight, Gold Krystol
w/N.C.C. Logo & date.....\$ 14
- 1983 - Georgian Tumbler, 2½ oz.,
Cobalt Blue, marked "10th Anniver-
sary 1973 N.C.C. 1983".....\$ 18
- 1984 - Georgian Tumbler, 2½ oz.,
Pink, marked "N. C. C." no date....\$ 12
- 1985 - Georgian Tumbler, 2½ oz.,
Amber, w/Club Logo & date.....\$ 14
- 1986 - Georgian Tumbler, 2½ oz.,
Gold Krystol, w/N.C.C. Logo & date.\$ 14
- 1987 - Nearcut Marjorie Punch Cup
Light Blue, marked "N.C.C. Conven-
tion 1987" in gold.....\$ 16
- 1988 - Cambridge Square Cigarette
Holder, Cobalt Blue, marked "N.C.C.
Convention 1988" in gold.....\$ 20

CUP PLATES

(add \$1 each p&h)

- Crystal, Cobalt, Amethyst, Teal
w/bulldog replica & N.C.C. name
(limited in each color).....ea..\$ 7

ORIGINAL STOCK CERTIFICATES from the CAMBRIDGE GLASS COMPANY

(price includes p&h)

These original certificates are
suitable for framing.....\$ 5

T-SHIRTS w/N.C.C. LOGO

(add \$1 each p&h)

Yellow/orange T-Shirt w/N.C.C. Logo
in black - sizes: S - M - L.....\$ 5

MISCELLANEOUS

(prices include p&h)

Post Cards

White card w/factory photo and
"The Home of NEAR-CUT" in
black ink.....\$ 1

Reprints of original Cambridge
booklet, pamphlets & leaflets
Booklet "Cambridge Arms.....\$ 4

Pamphlet "Rosepoint".....\$ 2

Pamphlet "Cambridge Square".....\$ 2

Leaflet "Rondo".....\$ 1

Leaflet "Laurel Wreath".....\$ 1

Leaflet "Lynbrook".....\$ 1

Marble (NEW 1988) Milk Glass
Marked "The Cambridge Glass Co.,
Est. 1901".....\$ 15

BOOKS

See "BOOKS FOR SALE" on page 2
for additional suggestions.

OHIO RESIDENTS add 6% State Sales Tax

Mail your order, along with your check
or money order, to:
NATIONAL CAMBRIDGE COLLECTORS, INC.
P.O. BOX 416
CAMBRIDGE, OH 43725



To Our Friends,

May your home be filled with happiness and good cheer during the Holidays and all through the coming year.

With Warmest Regards,
Clarke and Carole West

TASTE of HONEY
3433 Turner Drive
Springfield, OH 45504
513/390-3617

ANNOUNCING . . .

Farber Brothers Krome-Kraft

A Guide for Collectors
by Julie Sferrazza

- 180 pgs. - 48 in color (6" X 9")
- 450 items illustrated with inserts from Cambridge, Morgantown, Lenox, and many others.
- Original catalog reprints and advertisements.
- \$16.95 with value guide (plus \$3.00 P./H.)

Also: Farber Bros. 1941 Catalog Reprint \$8.95 or order both for \$22.00.

Antique Publications, (CB)
P.O. Box 553, Marietta, OH 45750
1-800-533-3433 or 1-800-282-9771 (Ohio)

The DAZE

★ SPECIAL OFFER
to NCC friends
\$2. off the 1 year
subscription price.
when on this form
or copy of.

The Original. National monthly newspaper dedicated to the buying, selling & collecting of colored glassware and china including Depression Glass and the Elegant Glass (Cambridge, Heisey, Fostoria etc.) We educate and inform you each month with feature articles by top notch columnists, readers "finds", club happenings, show news and a multitude of ads. Find those missing pieces to your 30s, 40s or 50s pattern. Can't identify it? Perhaps we can help. "Keep up with what's happening with a subscription to the DAZE. Buy, sell or trade from the convenience of your easy chair.

Name _____ Street _____

City _____ State _____ Zip _____

1 yr. \$15.00 2 yrs. \$29.00 \$1.75 single current copy

Check enclosed MasterCard Visa

Exp. date _____ Card No. _____

Signature _____

Orders to D.G.D., Box 57NC, Otisville, MI 48463

Please allow 30 days for your first issue— Canadian subscribers, add \$1. per year and subscribe by charge card only! This Special Offer May Not Be Combined With Other Special Offers

MICHAEL KRUMME
P.O. Box 5542, Santa Monica, CA 90405
Phone: 213/936-4214

Apple Blossom, yellow cig. box w/cover.....	\$ 45
Caprice, crystal 80 oz Ball jug.....	65
Mt. Vernon, royal blue #52, 40 oz. decanter w/crystal stopper.....	75
Rosepoint, #3900 mayonnaise.....	25
Rosepoint, gold encrusted crown tuscan 8 1/2" footed bud vase.....	40
Tally-Ho, scarce #1402/100 tall champagne/ sherberts, amber bowl, crystal stem, ea....	20

P&H extra. SASE required for return of excess postage. Write wants, I search, all lists kept on file. Paden City, Duncan-Miller my specialties.



May you and yours
enjoy all the special beauty
of the season.

ROBERT W. RILEY

P.O. Box 4180, Springfield, MA 01101

Phone: 413/737-0884 8-11 pm EST

GADROON #3500

#148 comport, crystal E/Portia.....\$ 32
#652 11" celery, amber E/Diane..... 22
#57 3-comp. candy w/lid, amber..... 25
#26 12" Rams Head basket, amber.... 150
#109 4-toed Rams Head bowl,
forest green..... 140
Jade Rams Head bowl w/Doric
candlesticks, set..... 190
#26 12" Rams Head basket w/6"
Rams Head sticks, pink, set..... 250

CAPRICE

#346 7" vase, flat rim, amethyst...\$ 80
#207 cigarette box w/4 ash trays
crystal..... 30
Same as above, moonlight blue..... 60
#151 5" jelly, moonlight blue..... 20
#82 13" bowl, moonlight blue..... 22
#65 11" oval bowl w/#70 7" sticks
moonlight blue, set..... 125

AMBER

#842 12½" bowl, E/#755.....\$ 25
#1239 14" Keyhole vase..... 30
#120 Mt. Vernon oval salt..... 20
#3400/1312 cvd. cigarette box..... 34
#3400 oil & vinegar/salt & pepper
in Farber, w/Farber tray, set... 32
#3400/1386 Decanter w/Farber..... 35
#646 5" Decagon candlesticks, pr... 15
#1506/3 novelty basket, mocha..... 24

CROWN TUSCAN

#1337 cigarette holder w/ash tray
foot.....\$ 60
#1043 8½" swan..... 210
#33 4" ash trays (4) each..... 9
#17 9" 3-toed bowl..... 30
#15 6" comport..... 20

EBONY

#2862 7" candlesticks, pair.....\$ 40
#94 sweet pea vase..... 38
#3400/28 7" compote..... 50
#4 7½" bowl w/gold rim..... 17

MISCELLANEOUS

#156 oyster plates w/cups (11) ea.\$ 5
#646 6" stick E/Rosepoint..... 22
#674 13" bowl E/Chintz..... 25
#163 8½" Martha asparagus plate... 12
#3400/144 cigarette holder w/ash
tray foot, carmen..... 55
Keyhole 2-lite stick, carmen..... 40
Oval center-handle server E/#704
light emerald..... 20
#935 64 oz. jug, light emerald.... 30
#3400/38 80 oz. Ball jug,
amethyst..... 30
#W105 9" 3-toed bowl, milk glass.. 50
#1200 10" Decagon club plate,
gold krystal (5) each..... 5
#1402/39 34 oz. decanter,
royal blue..... 75
#23 5" Everglade vase, violet..... 110
#SS32 2½" ash tray, windsor blue.. 45
#SS15 6" comport, windsor blue.... 60
#25 8" Everglade plate, willow
blue (7) each..... 20
4" Star candlesticks, moonlight
blue, pair..... 20
#1595 9" sticks, cobalt, pair..... 45

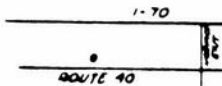
POSTAGE & INSURANCE EXTRA

LAYAWAY AVAILABLE



WELCOME TO GLASS COUNTRY!

STOP AND SEE US



WE FEATURE GLASSWARE OF
CAMBRIDGE, HEISEY, FENTON & FOSTORIA

Plus a full line of Art Pottery and a General line of Quality Antiques

RT 40 ONE HALF MILE WEST OF I-70 NORWICH EXIT #184
MANY DEALERS-WIDE SELECTION-PLENTY PARKING

DORIS AND ROY ISAACS
BUY AND SELL
614-872-3720



7525 EAST PIKE
NORWICH, OHIO 43787

MON THRU SAT 10-5:30 SUN 12-5:30
SUMMER EVENING HOURS BY CHANCE

MANY DEALERS - PLENTY OF PARKING

SPRINGFIELD Antique Show & Flea Market

Clark County Fairgrounds

SPRINGFIELD, OH

Exit 59 on I-70

400-800 DEALERS

INSIDE AND OUTSIDE

Ohio's largest year round show with an
emphasis on quality antiques

9:00 AM - 5:00 PM

Admission \$1.00

Children under 12 FREE

NEXT SHOW

DECEMBER 10 & 11, 1988

1989 SHOW DATES

JAN	21-22	Inside
FEB	18-19	Inside
MARCH	18-19	Inside
APRIL	15-16	Inside & Outside

R. BRUCE KNIGHT, MGR.

For Information Write
P.O. Box 2429, Springfield, OH 45501
Phone (513) 325-0053



COLUMBUS ANTIQUE FLEA MARKET (ANTIQUES & COLLECTIBLES)

Ohio State Fairgrounds - Lausche Building
Off I-71 Exit 17th Avenue - Columbus, Ohio

DECEMBER 11 TH

Sunday Only - 7 A.M. to 4 P.M.
Show Admission \$1.50 - Under 12 Free
150 QUALITY DEALERS

SELLING Advertising Art Deco, books, Cambridge clocks, coins, collec-
tibles, Depression glass, dolls, Fiesta, fine early furniture, Heisey, jewelry,
lamps, oak furniture, post cards, pottery, good primitives, tools and print
shop items



4214 North High Street, Columbus, Ohio 43214
(614) 267-8163 (614) 263-6830 (614) 885-2352

NEXT SHOW: January 8, 1989



DEALERS DIRECTORY

NOTE: When writing to the Dealers listed here, please enclose a SASE!

<p>THE GLASS URN 456 West Main Street, Suite G. Mesa, AZ 85201 602 / 833-2702 Mail Order Shows Open Shop CAMBRIDGE, FOSTORIA, HEISEY, ETC.</p>	<p>ETTELMAN'S DISCONTINUED CHINA & CRYSTAL Cambridge a Specialty P.O.Box 6491-CB Corpus Christi, TX 78466 Phone (512) 888-8391 Include S.A.S.E.</p>	
<p>MILBRA'S CRYSTAL MATCHING P O Box 363, Rio Vista, TX 76093 Milbra Long 817 / 645-6066 FOSTORIA * CAMBRIDGE * HEISEY * DEPRESSION ERA GLASSWARE BUY and SELL</p>	<p>BENICIA ANTIQUE SHOP 305 First Street Benicia, California 94510 OPEN 11 AM - 5 PM Closed Monday Z. E. LOPES 707-745-0978</p>	<p>THE MUTED SWAN ANTIQUES 5486 Peachtree Rd. Chamblee, GA 30341 Heart of Chamblee Antique Row Specializing in Cambridge, Heisey and Fostoria Bill & Pat Miller 404-451-7620</p>
<p>Mama Manning's Cherished Relics 3118 Terry Rd., Jackson, MS 39212 JENELL P. MANNING VELMA PICKLE Bus. (601)372-1713 (601)353-5316 Res. (601)372-0456</p>	<p>VISIT HISTORIC BENICIA and its 28 shops Off Interstate #80 North of San Francisco</p>	<p>Elegant American Glassware of the Early 1900s ABBA Antiques Bill & Barbara Adt (404) 279-1942 P.O. Box 2485 Lilburn, Georgia 30226</p>
<p>BOGART'S ANTIQUES Stagecoach Mall, Building #2 Norwich, OH 43767 ***** Jack and Sharon Bogart 614/826-7439 and 614/872-3514 ***** BUY - SELL - APPRAISE - REFINISH SEAT WEAVING - CLOCK REPAIR COPPER & BRASS POLISHING GENERAL LINE CAMBRIDGE GLASS</p>	<p>ANTIQUES ON THE MALL SPECIALIZING IN CAMBRIDGE GLASS Stagecoach Mall - Bldg. 3 - Norwich, OH Virginia Bennett 614/432-4483 64183 Warne Drive, Cambridge, OH 43725</p>	<p>BERKELEY ANTIQUES 69 Berkeley St., Boston, MA 02116 OPEN: Monday thru Saturday 11 AM to 5 PM GEORGE & FRANK 617/426-1048 DUNCAN, CAMBRIDGE, HEISEY, GENERAL LINE</p>
<p>THE GLASS CUPBOARD 39 Shire Oaks Drive Pittsford, New York 14534 Marcia Ellis Cambridge, Duncan Miller (716) 586-7596 Shows, Mail Order, Appt.</p>	<p>D & D ANTIQUES Columbus, Ohio DICK SLIFKO SHOWS ONLY</p>	<p><i>YOU CAN ADVERTISE YOUR ANTIQUE SHOP HERE!</i></p>
<p>"Days of Future Passed" 4 Newbrook Lane, Bayshore, L.I., NY 11706 LYNN DEZMAIN (516) 665-3890 Cambridge, Elegant Glass, D. G., Collectibles</p>	<p>JUDY'S ANTIQUES Judy Bennett 422 S. Ninth Street (Corner of Jefferson) Cambridge, Ohio 43725 BUYING Ph. 614-432-5855 SELLING <i>Cambridge Glass my Specialty</i></p>	<p>"Happiness Is" - The Stultzs 3106 Warren Court, Glen Allen, VA 23060 Shows and Mail (Richmond Area) 804/262-1273 GLASS CIRCA 1890-1960</p>
<p>THE HITCHING POST 7467 S. R. 88 Ravenna, OH 44266 Ph. 216-296-3686 D. McDaniel CAMBRIDGE — HEISEY — GENERAL LINE</p>	<p>GREEN ACRES FARM 2678 Hazelton Etna Rd., Pataskala, OH 43062 (State Route 310 North) Sat. & Sun. 1-7 PM 614/927-1882 Antiques, Crystal Glass and Collectibles</p>	<p>MOSTLY HEISEY & CAMBRIDGE 16 Clayton Place, Albany, NY 12209 Rhoda Curley 518 / 482-6272 SHOP and MAIL ORDER</p>
<p>L & M ANTIQUES 1331 S.E. 4th Ave., Pompano Beach, FL 33060 Lydia & Cliff McNeil 305/943-2274 CAMBRIDGE & FOSTORIA OUR SPECIALTY Buy & Sell Shows Only</p>	<p>BUY-SELL 513/390-3617 <i>Taste of Honey</i> Glassware—Collectibles CLARKE & CAROLE WEST 3433 Turner Dr. Springfield, OH 45504</p>	<p>CRYSTAL LADY 1819 Vinton St., Omaha, NE 68108 Joann D. Hagerty Bus. (402)341-0643 Res. (402)391-6730 Specializing in Elegant Glass & Collectables</p>
<p>GLASS RESTORATION CRYSTAL AND GLASSWARE Don & Lynne Mt. Clemens, Mich. Wormland (313) 791-9191</p>	<p>REMEMBRANCES 7597 Daphne Dr., No Syracuse, NY 13212 Shirley S. Ladouceur 315 / 458-5297 ANTIQUES and COLLECTIBLES MAIL ORDER SHOWS APPOINTMENTS</p>	<p>MARGARET LANE ANTIQUES 2 E. Main St., New Concord, OH 43762 Lynn Welker 614 826-4418 CAMBRIDGE GLASS MATCHING SERVICE Hours Mon.-Fri. 1-5 PM or by Appointment</p>
<p>AL STEELE Westerville, Ohio 614-882-6483 or 614-882-7124 Mail Orders and Shows Only HEISEY — CAMBRIDGE — PATTERN GLASS</p>	<p>BUD'S TRADING POST GENERAL STORE — FLEA MARKET 501 Wheeling Ave. Cambridge, OH 43725 10-5 Mon. thru Sat. 614-432-4688 CAMBRIDGE - PATTERN - ART GLASS This Bud's for Y'all</p>	



National Cambridge Collectors, Inc.

P. O. Box 416 Cambridge, Ohio 43725

A nonprofit organization dedicated to the preservation and study of Cambridge Glass



You Are Cordially Invited
To Become A Member Of The
NATIONAL CAMBRIDGE COLLECTORS, INC.

Benefits derived from membership include: receipt of our club publication, The Cambridge CRYSTAL BALL, informative Quarterly Meetings, Antique Shows, Auctions, and other special events.

The Cambridge CRYSTAL BALL is published the first of each month. This news letter contains educational and interesting articles, questions and answers, information on reproductions and resues, notices of all club functions, classified advertisements, dealers directory and many other features of interest to collectors of Cambridge Glass.

Yearly dues are \$13.00 for Individual Members and \$3.00 for each Associate Member. All members have voting rights, but only one issue of the CRYSTAL BALL will be mailed per household.

Name (please print) _____ \$13.00

Mailing Address _____

City _____ State _____ Zip _____

Associate Members (Must be at least 12 years of age and living in the same household.)

1 Name _____

2 Name _____

3 Name _____

Total number of Associate Members _____ @ \$3.00 each \$ _____

TOTAL AMOUNT ENCLOSED \$ _____
Please make check payable to NATIONAL CAMBRIDGE COLLECTORS, INC.

Recommended by _____

Give a gift they'll appreciate all through the year.

DECEMBER 1988



Remember how it used to be
When magic sparkled on the tree,
When secrets hovered in the air,
And waiting seemed too much to bear,
When you would thrill with sweet surprise
As dreams came true before your eyes...
Remember how it was, and then--
This Christmas, be a child again!

National Cambridge Collectors, Inc.
P. O. Box 416 Cambridge, Ohio 43725

FIRST CLASS MAIL

FIRST-CLASS MAIL
U.S. POSTAGE
PAID
So. Vienna, Ohio
45369
Permit No. 15

Membership Renewal Notice
This is your **last** issue of the *Crystal Ball*—if the date on your address label reads **12-88**.
Please renew now!