



Cambridge Crystal Ball

Published monthly by the National Cambridge Collectors, Inc.
to encourage and report the discovery of the elegant and boundless product
of the Cambridge Glass Company of Cambridge, Ohio

Issue No. 189

January 1989



No. 1169 Bon Bon, Handled,
With tongs. Etching 739.

Always Interesting New Items in the Cambridge Line

Illustrated are wares which can be used
profitably by every department and shop.
They are useful. They are well designed
and they are most attractive.



Here is a Relish Dish every
one will want. It is No. 862.

All wares available in
several colors in transpar-
ent glass including Peach-
Blo, Emerald, Madeira,
Willow Blue.

This 12-inch vase is No.
402. Comes in several etch-
ings. No. 717 etching shown.

SALES ROOMS
New York—184 Fifth Avenue, Oliver C. Graham, Manager. Eugene P. Henn, Assistant Manager.
SALES ROOMS
Chicago—Room 311 Shops Building, 17 N. Wabash Avenue, Ben Franklin, Manager.

QUALITY
ORIGINALITY  BALABILITY



THE CAMBRIDGE GLASS COMPANY
CAMBRIDGE, OHIO



Advertisement
appeared in the
December 1929
issue of
"China, Glass and
Lamps."

See related article
by Mark Nye
beginning
on page 3.

HAPPY
NEW
YEAR!

Cambridge Crystal Ball

Official publication of National Cambridge Collectors, Inc., a non-profit corporation with tax exempt status. Published once a month for the benefit of its members.

Membership is available for individual members at \$13 per year and additional members (12 years of age and residing in household) at \$3 each. All members have voting rights, but only one *Crystal Ball* will be mailed per household.

Back issues of the *Crystal Ball* are available (beginning with Issue No. 1, May 1973) for members only. Cost: 60 cents each or 12 issues for \$7.

1988-89 Officers & Committee Chairpersons

| | |
|---------------------|---|
| President | Mark A. Nye |
| Vice-President | Cynthia A. Arent |
| Secretary | J.D. Hanes |
| Treasurer | William C. Smith |
| Sergeant-at-Arms | Marlene K. Snyder |
| Acquisition | Lynn Welker, Bill Smith, Mark Nye, Joy McFadden, J.D. Hanes |
| Budget & Finance | David B. Rankin |
| By-Laws | J.D. Hanes |
| Convention | Mark A. Nye |
| Membership | Phyllis D. Smith |
| Museum—Facilities | Willard P. Kolb |
| Museum—Interior | Lynn Welker, Janice Hughes, Marybelle Moorehead |
| Non-Glass Items | J.D. Hanes, Cindy Arent, Judy Momirov |
| Nominating | Willard P. Kolb |
| Program | R. Clarke West |
| Project | William C. Smith |
| Public Relations | William C. & Phyllis D. Smith |
| Publicity | Cynthia A. Arent |
| Study Group Advisor | Phyllis D. Smith |
| 1989 Auction | Lynn M. Welker |
| 1989 Antique Show | Joy R. McFadden |
| 1989 Flea Market | Marybelle Moorehead |
| Crystal Ball Editor | Phyllis D. Smith |

Classified Advertising Rates

10 cents per word \$2.00 minimum
We cannot mix type size in classified advertisements. Abbreviations and initials will count as words. Payment in full must accompany all ads.

Display Advertising Rates

| (Camera-ready ads preferred) | Members | Non-Members |
|------------------------------|---------|-------------|
| 1/8 page (9 items) | \$ 6.00 | \$10.00 |
| 1/4 page (20 items) | 10.00 | 15.00 |
| 1/2 page (20 items) | 18.00 | 25.00 |
| 3/4 page | 25.00 | 35.00 |
| Full page (50 items) | 33.00 | 45.00 |

Dealers Directory

Five-line maximum \$18.00 for 12 months

Cambridge *Crystal Ball* assumes no responsibility for items advertised and will not be responsible for errors in price, description or other information.

Advertising copy, articles, club news and notices must be in our hands by the 10th of each month to assure publication in our next issue.

Paid advertisements containing reproductions or new glass will not knowingly be accepted for publication.

Opinions or information stated in any signed article or letter printed in the *Crystal Ball* are those of the authors and may or may not agree with National Cambridge Collectors, Inc. The Editor reserves the right to refuse and to edit any material submitted for publication so as to conform with the editorial style of the *Crystal Ball*.

Please Address All Correspondence to:

National Cambridge Collectors, Inc.
P.O. Box 416 Cambridge, Ohio 43725

President — Mark A. Nye, 305/221-0343

Secretary — J.D. Hanes, 614/432-6794

Editor — Phyllis Smith, 513/323-3888

Please notify us immediately of any change in your address.

Please enclose an SASE when requesting information.

CAMBRIDGE GLASS BOOKS FOR SALE

by National Cambridge Collectors, Inc.

* **COLORS IN CAMBRIDGE GLASS**
(128 pages - 60 color plates - fully indexed)
Hardbound with Price Guide \$19.95

* **1930-34 CAMBRIDGE GLASS CO. CATALOG REPRINT**
(250 page reprint of original catalog)
Hardbound with Price Guide \$14.95

* **1956-58 CAMBRIDGE GLASS CO. CATALOG REPRINT**
(164 page reprint of original catalog)
Paperback \$6.95

1985 COMBINED PRICE GUIDE
for 1930-34 & 1949-53 catalog reprints Postpaid \$5.75

*NCC MEMBERS ONLY: These publications are available at 10% discount

by Bill & Phyllis Smith

CAMBRIDGE GLASS 1927-1929
(66 page reprint of original catalog)
Paperback with Identification Guide \$7.95

by Mark Nye

CAMBRIDGE STEMWARE
(95 Stemware lines with 107 illustrations)
Paperback \$14.95

by Cambridge Buffs Study Group

NEARCUT
(108 page reprint of 1910 Cambridge Catalog)
Paperback with Price Guide \$9.95

by Mary, Lyle and Lynn Welker

CAMBRIDGE GLASS CO.
(120 pages of reprint from 8 old catalogs)
Paperback \$6.95

CAMBRIDGE, OHIO GLASS IN COLOR II
Spiralbound \$5.95

by Harold and Judy Bennett

1903 CAMBRIDGE GLASS CO. CATALOG REPRINT
(106 page reprint of an original catalog)
Paperback \$7.50

Address your orders to:

BOOKS
National Cambridge Collectors, Inc.
P.O. Box 416
Cambridge, OH 43725

Please add \$1.00 (P & I) per order.
(Not required for Price Guide)
Ohio residents please add 6% state sales tax.

DEALER DISCOUNTS AVAILABLE - PLEASE WRITE!

NCC Museum of Cambridge Glass

The museum is located on U.S. Route 40, one-eighth mile east of I-77 near Cambridge. Hours: 12 noon to 4 p.m., Wednesday through Sunday (March through October). Phone 614/432-4245.
Closed Easter and July 4th.

HAPPY NEW YEAR

FROM THE PRESIDENT'S DESK

Occasionally I am asked if I have a job other than my efforts for N.C.C. The answer is yes, I do have a full-time position with Baxter Healthcare Corporation here in Miami, Florida. Every now and then it requires a great deal of my time, time above and beyond the normal week. This past month has seen such demands and I find myself unable to write a New Year's message. I have had the following in my files for some-time, and find it quite appropriate as a New Year's message, in that if we all lived and worked by these rules and philosophies, what a great world this would be.

Best Wishes to all, for a Very Happy New Year.



"All I Ever Really Needed to Know, I Learned in Kindergarten"

by Robert Fulghum

Most of what I really need to know about how to live, and what to do, and how to be, I learned in kindergarten. Wisdom was not at the top of the Graduate school mountain, but there in the sandbox at nursery school.

These are the things I learned: Share everything. Play fair. Don't hit people. Put things back where you found them. Clean up your own mess. Don't take things that aren't yours. Say you're sorry when you hurt somebody. Wash your hands before you eat. Flush. Warm cookies and cold milk are good for you. Live a balanced life. Learn some and think some and draw and paint and sing and dance and play and work every day some.

Take a nap every afternoon. When you go out into the world, watch for traffic, hold hands and stick together. Be aware of wonder. Remember the little seed in the plastic cup. The roots go down and the plant goes up and nobody really knows how or why, but we are all like that.

Gold fish and hamsters and white mice and even the little seed in the plastic cup - they all die. So do we.

And remember the book about Dick and Jane and the first word you ever learned, the biggest word of all: LOOK. Everything you need to know is in there somewhere. The Golden Rule and love and basic sanitation. Ecology and politics and sane living.

Think of what a better world it would be if we all - the whole world, had cookies and milk about 3 o'clock every afternoon and then lay down with our blankets for a nap. Or if we had a basic policy in our nation and other nations to always put things back where we found them and cleaned up our own messes. And it is still true, no matter how old you are, when you go out into the world, it is best to hold hands and stick together.

Transparent Colors

PART III

by MARK A. NYE

Continuing with the introduction of Willow Blue in the summer of 1928, the following text was published as a full page advertisement in the August 13, 1928 issue of China, Glass and Lamps.

"The Cambridge Glass Company Presents
WILLOW BLUE GLASSWARE - DECAGON
DINNERWARE - NOVELTIES.

This appealing product is our answer to the demand for a new, quality colored glassware in a design of real beauty. It is offered in the confident belief that it will be an outstanding favorite with the buying public during the Fall and Holiday season. It is worthy of your attention. If your order has not yet been placed, arrange to see it at once. You will not be disappointed, and remember: CAMBRIDGE WARES STIMULATE SALES. The new 'Willow Blue' is on display at our factory and showrooms."

From Crockery and Glass Journal, July 1928, comes this description of the new Cambridge color.

"A New Cambridge Blue of Rare Charm -- Introducing for the first time a brand new shade of blue in glassware which they have named 'Willow Blue.' The Cambridge Glass Co., Cambridge, O., have attained a truly notable achievement in a color which is destined to meet with immediate popularity. The individuality of the color, which is distinct unto itself, has only been accomplished after long experimentation on the part of the factory. An interesting point to be stressed in connection with this new blue is the fact that it particularly harmonizes with the present day popular pastel tints found in fancy pottery and other attractive decorative pieces in the modern home. The Cambridge firm is especially featuring the Willow Blue in their tableware on the Decagon shape. Some idea of how attractive this color is in combination with this line may be derived by reference to the illustration herewith. No great stretch of the imagination is necessary to visualize

how adaptable it is in this respect. A full line of the new samples may now be seen at the New York Salesroom, 18 Fifth Ave."

Advertisements published during the Spring of 1929 made frequent mention of emerald, amber, peach-blo and willow blue. Among these was one featuring Cleo on Decagon blanks that included this statement:

". . . in Willow Blue, an unusual shade of blue; in Peach-Blo, a unique shade of pink and in Emerald, a green of spring time freshness."

Then, in June 1929, a new color name, Madeira, appears in an advertisement published on the cover of China, Glass and Lamps: "CAMBRIDGE glass is made in beautiful transparent colors of Emerald, Madeira, Peach-Blo and Willow Blue." In this advertisement, no indication of the nature of Madeira is provided, but one week later the following appeared in the June 17, 1929 issue of the same publication:

"GOLDEN, AMBER TRANSPARENT
COLOR ADDED TO CAMBRIDGE GLASS
CO. LINE

Adding to its variety of transparent colors, the Cambridge Glass Co., Cambridge Ohio, recently has introduced a light golden amber shade which it has named 'Madeira.' This new color is in addition to the attractive Willow Blue, Peach-Blo and Emerald which have been the leading transparent colors with the Cambridge Glass Co.

The 'Madeira' is neither a canary yellow nor a deep amber, but what might be described as half-way between the two. It is a clear, entrancing color and keeps its tone effect in both blown and pressed ware.

Many of the new items brought out in the past few weeks by the Cambridge Glass Co. are being offered in 'Madeira' or in combinations, especially stemware, of 'Madeira' bowl and crystal stem and foot"

During the following months various Cambridge advertisements referred to the new color Madeira and described it as a "golden amber."

Once again, the cover of China, Glass and Lamps was used to introduce a new color for it is there, the August 26, 1929 issue to be exact, we find this statement: "The newest in stemware is Gold-Krystal glass. See it and you will admire it." The following month a more complete description of the color appeared:

"GOLD KRYSTAL' STEMWARE LATEST OFFERING OF CAMBRIDGE GLASS CO. Among the new lines which the Cambridge Glass Co. of Cambridge, Ohio, is offering in blown and pressed glassware for the coming Holiday trade, the newest in stemware is called 'Gold Krystal' in combination of the bowl in the new transparent color - gold and crystal foot and stem.


The transparent shade which gives to 'Gold Krystal' its attractive coloring is an entirely new color with the Cambridge factory. It is a light gold and bright and attractive, a close approximation in glass to 'gold.' The coloring holds throughout and it can be distinguished easily. There is no amber tinge to the 'Gold Krystal' of the Cambridge factory. It is rather a deep yellow-gold than an amber-gold.

The new color is attractive in optic or in plain shape with or without decoration. It is quite effective in the 'aero' optic which has been a feature in Cambridge glassware this year. An attractive number in 'Gold Krystal' with etching is the No. 3120 shape, which has a beautiful stem. Various etched designs are available, including the new No. 733."

Do note the difference in spelling of "Krystal" in the preceding vs "Krystal" in the original advertisement. Subsequent Cambridge advertisements in September and October of the same year continued to use the "Krystal" version. An advertisement published in December of 1929 mentioned Madeira, Peach-Blo, Emerald and Willow Blue, but failed to include Gold Krystal. This, however, should not be taken to mean Gold Krystal had been dropped, for it does appear in listings published the next month. Taken in context of the advertisement, it probably is an indication the items shown, were not, at the time, available in this color.

A listing of Cambridge colors was published in the 1930 edition of the China, Glass and Lamps Trade Directory and these colors were:

THE CAMBRIDGE GLASS CO.
CAMBRIDGE, OHIO, U. S. A.



NO. 17—BEVERAGE SET

Included in the many useful and unique wares in the Cambridge line on colored transparent glass are Beverage and Cocktail Sets. One of the newer types of Beverage Sets is illustrated. Other Beverage Sets include different types of glasses and decanters. Also for the Holidays, see our No. 1105 Cocktail Set.

The newest in stemware is Gold-Krystal glass. See it and you will admire it.

SALESROOMS

New York—184 Fifth Avenue, Oliver C. Graham, Manager,
Eugene F. Henn, Assistant Manager.
Chicago—Room 311 Shops Building, 17 N. Wabash Avenue,
Benjamin F. Franklin, Manager.

China, Glass and Lamps August 26, 1929

Gold Krystal, Emerald, Willow Blue, Peach-Blo, Amber-Glo and Ebony. No mention was made of Madeira and in its place we find a return of the name Amber-Glo. However, another listing, this time in paragraphs describing new wares from the Cambridge factory, we find Madeira rather than Amber-Glo being listed. Early in 1930, very possibly during January of that year, Cambridge issued a new catalog and in that catalog is this statement regarding colors:

"Refer to Price List for COLORS in which Glassware shown in this catalog is made. Practically all items illustrated are made in Crystal, as well as the prevailing transparent colors, such as Amber, Emerald, Peach-Blo, Willow Blue and Gold Krystal. Many items are made in Ebony also. The price list gives full information as to the colors in which each line is made."

continued on next page

COLORS continued from page 5

Unfortunately, a copy of the price list that accompanied this catalog has not yet surfaced. Do note the spelling and capitalization used in the statement. Documents known to be of Cambridge origin and Cambridge advertisements no doubt reflect the proper color nomenclature and spelling designated by the company.

In this case, it can be concluded Madeira had been discontinued by the start of 1930 and a new amber shade, known simply as "Amber" had replaced it. This Amber is darker than Madeira and those amber colored items etched Apple Blossom are examples of the 1930 Amber.

To be continued

PROPOSED BY-LAWS CHANGE

The following change in the By-Laws of the National Cambridge Collectors, Inc., shall be voted on at the February Quarterly Meeting, February 24, 1989.

Whereas, it has been deemed necessary to not limit a committee, now, therefore be it

Resolved that Article VI, Section 7, be amended to read:

ARTICLE VI - DUTIES OF COMMITTEES

Section 7 Study Group Advisory. The Study Group Advisory Committee shall maintain official record of the activities of approved study groups. They shall furnish assistance and guidance to the study groups including, but not limited to, suggested topics for meetings, group projects, and research activities. They shall, further, make newsworthy information and current listings of contact representatives available to the Publicity Committee.

(EDITOR'S NOTE: A copy of the N.C.C., Inc., Constitution and By-Laws was printed in the March 1988 (Issue #179) of the Cambridge CRYSTAL BALL. If you would like a copy of the Constitution and By-Laws sent to you, please send a large SASE to: **National Cambridge Collectors, Inc., P.O. Box 416, Cambridge, OH 43725.**)

Study Club News

STUDY GROUP #7 - EASTERN OHIO
"THE CAMBRIDGE BUFFS"
Phone: 614/432-5230

The Cambridge Buffs Study Group held their November meeting in the home of Lena Barnes. There were seven members present.

Charles Upton called the meeting to order and led the group in a discussion of Cambridge Colors. He had printed color charts and discussion was held on the different shades that are hard to define.

There were approximately one hundred small items of glassware, such as: birds; salts; pencil dogs; cups, cordials; and many other pieces. Each member had to identify the glass and the color, from the chart.

Next meeting will be our Christmas meeting at the home of Roy and Doris Isaacs.
submitted by Deanne Gray

STUDY GROUP #13 - SOUTH WEST OHIO
"MIAMI VALLEY, OHIO"

The Miami Valley Study Group and the local Heisey Group held a combined Christmas dinner meeting, December 5th, at a Dayton, Ohio, restaurant. There was no formal meeting or program, but a social time was enjoyed by the approximately thirty people in attendance.

Next meeting for the Miami Valley Group will be January 10th at the Huber Heights Library, 7 PM. Interested NCC members are welcome.
submitted by Vicki Wollenhaupt

STUDY GROUP #14 - CAMBRIDGE, OHIO
"THE CAMBRIDGE CORDIALS"
Contact person - Judy Momirov
Phone: 614/432-2896

The Cambridge Cordials Study Group held their November 12th meeting in the home of Mike and Cindy Arent. There were nine members present.

Topic for the evening was Nearcut. Rich Bennett shared a copy of an article on

continued on page 12

No. 2508 Ware.

25

SCALE, HALF SIZE.

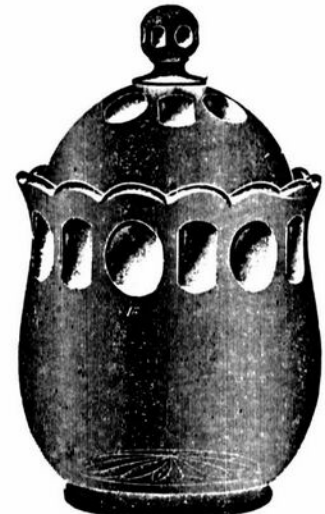


Spoon.
Packed 10 dozen in a barrel.

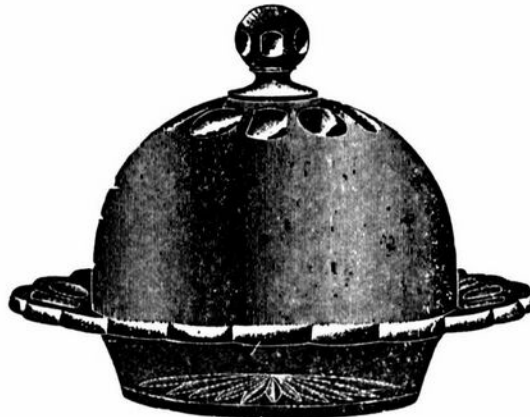
Set packs 1½ dozen in a barrel.



Cream, Stuck Handle.
Packed 10 dozen in a barrel.



Sugar and Cover.
Packed 6½ dozen in a barrel.



Butter and Cover.
Packed 4 dozen in a barrel.



Tall Celery.
Packed 5 dozen in a barrel.



Salt and Pepper.
Packed 32 dozen in a barrel.
Original package is 12 dozen.



Molasses Can, Capacity 16¼ ounces.
Packed 7 dozen in a barrel.

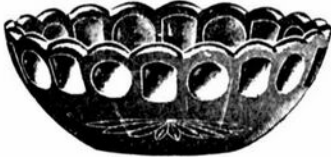
This and the next four pages are taken from the 1906 Cambridge Glass Company catalog.

No. 2508 Ware.

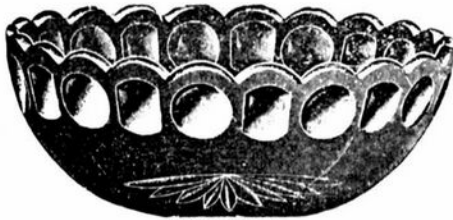
SCALE, HALF SIZE.



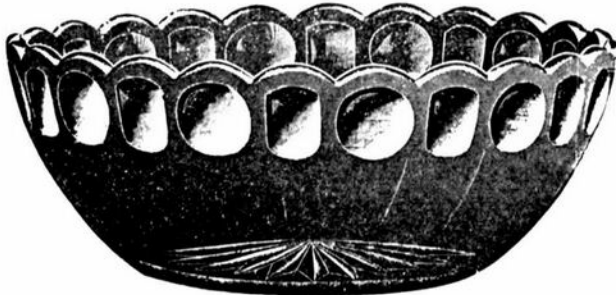
4 inch Nappy.
Packed 36 dozen in a barrel.



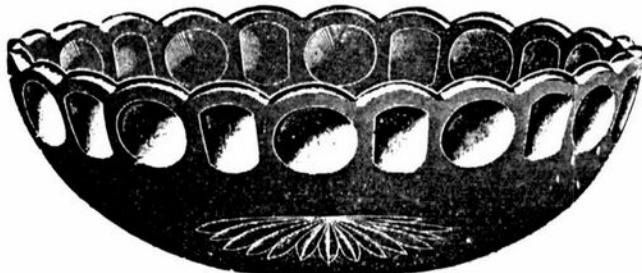
4½ inch Nappy.
Packed 28 dozen in a barrel.



6 inch Nappy.
Packed 10 dozen in a barrel.



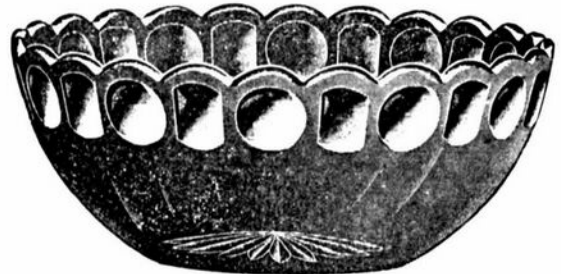
8 inch Nappy.
Packed 4 dozen in a barrel.



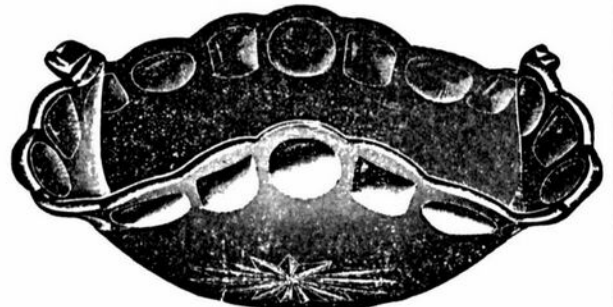
9 inch Nappy.
Packed 4 dozen in a barrel.



10 inch Salver.
Packed 1½ dozen in a barrel.



7 inch Nappy.
Packed 6 dozen in a barrel.



7 inch Nappy, C Shape.
Packed 3¼ dozen in a barrel.
Also made in 8 inch size,
8 inch Nappy.
Packed 2¼ dozen in a barrel.

No. 2508 Ware.

27

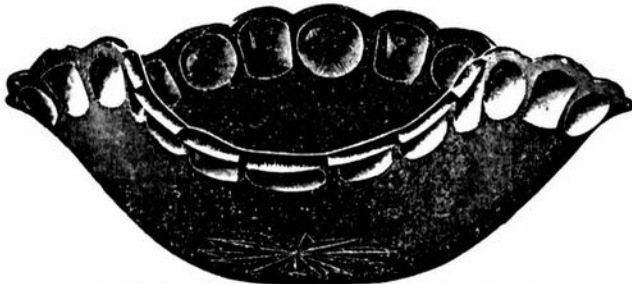
SCALE, HALF SIZE.



8 inch Silver. Packed 2 dozen in a barre

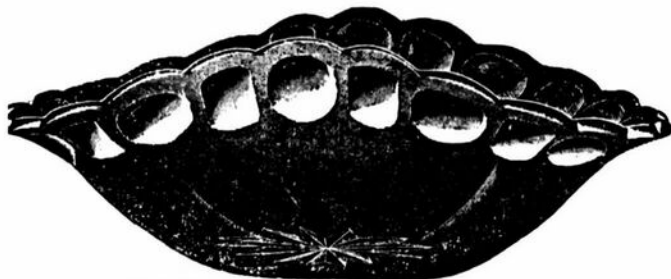


7 inch Scalloped High Footed Bowl. Packed 1 $\frac{1}{4}$ dozen in a barrel.
Also made in 6 inch and 8 inch sizes.
6 inch Bowl. Packed 2 $\frac{1}{4}$ dozen in a barrel.
8 inch Bowl. Packed 1 $\frac{1}{4}$ dozen in a barrel.



7 inch Nappy, D Shape. Packed 3 $\frac{1}{4}$ dozen in a barrel.
Also made in 8 inch size.

8 inch Nappy. Packed 2 $\frac{1}{2}$ dozen in a barrel.



7 inch Nappy, B Shape. Packed 4 dozen in a barrel.
Also made in 8 inch size.

8 inch Nappy. Packed 2 $\frac{1}{4}$ dozen in a barrel.



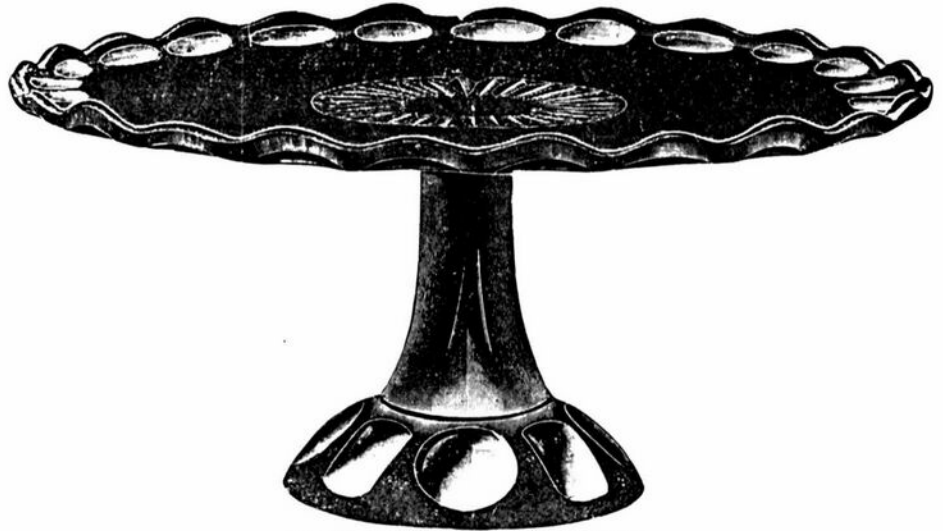
7 inch Fruit Bowl. Packed 2 dozen in a barrel.
Also made in 8 inch and 9 inch sizes.
8 inch Bowl. Packed 1 $\frac{1}{4}$ dozen in a barrel.
9 inch Bowl. Packed 1 dozen in a barrel.

No. 2508 Ware.

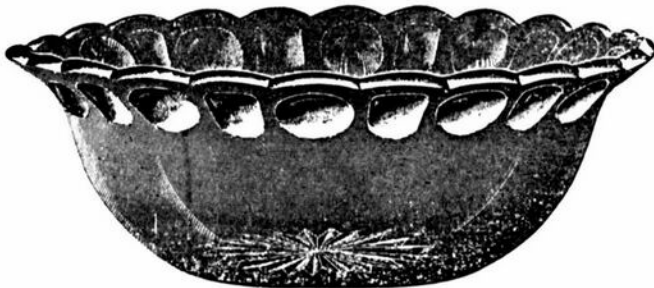
SCALE, HALF SIZE.



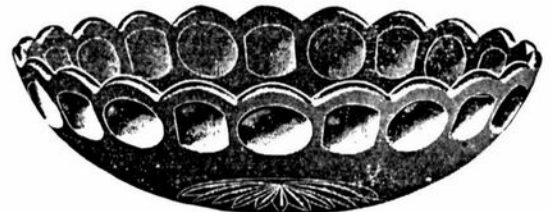
5 inch Preserve.
Packed 30 dozen in a barrel.



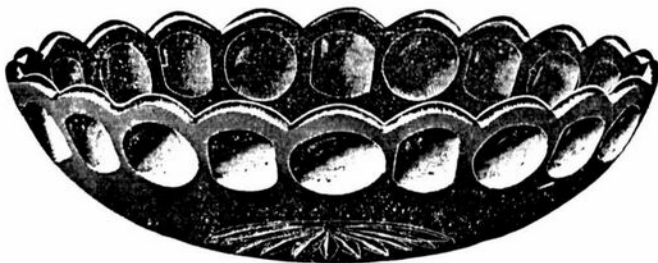
12 inch Salver. Packed $\frac{3}{4}$ dozen in a barrel.



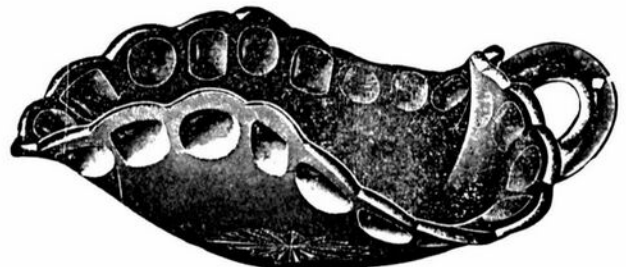
7 inch Nappy, A Shape. Packed 7 dozen in a barrel.
Also made in $4\frac{1}{4}$ and 8 inch sizes.
 $4\frac{1}{4}$ inch Nappy. Packed 35 dozen in a barrel.
8 inch Nappy. Packed 4 dozen in a barrel.



7 inch Preserve.
Packed 12 dozen in a barrel.



9 inch Preserve. Packed 6 dozen in a barrel.
Also made in 8 inch size.
8 inch Preserve. Packed 7 dozen in a barrel.



6 inch Handled Nappy, D Shape.
Packed 5 dozen in a barrel.

No. 2508 Ware.

29

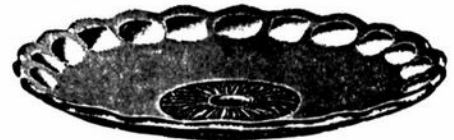
SCALE, HALF SIZE.



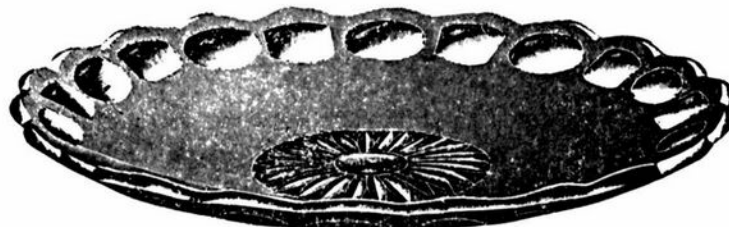
Half Gallon Tankard Pitcher.
Stuck Handle.
Packed $1\frac{1}{2}$ dozen in a barrel.



8 inch Plate.
Packed 15 dozen in a barrel.



6 inch Plate.
Packed 25 dozen in a barrel.



10 inch Plate.
Packed 7 dozen in a barrel.

**CLASSIQUE
GLASS
CO.**

BOX 52572
TULSA, OK 74152
918 744-5409

- Block Optic 9" Rubina compote..\$ 95
 Ram's Head 2-lite candleholder,
 bobeches, prisms, Super!.pr.\$ 135
Caprice, Crystal Alpine
 #66 13" 2-hdl.4-ftd.oval bowl..\$ 75
 14" Torte plate.....\$ 49
Caprice, Blue
 #82 10½" 4-ftd. shallow,
 cupped bowl.....\$ 65
 #1 10 oz. molded gobets (2)...\$ 40
 #300 blown sherbet (4).....\$ 26
 #300 blown Alpine champagne...\$ 35
 #300 blown 12 oz. ice tea.....\$ 34
Caprice, Gold
 #65 11" 2-hdl.4-ftd.oval bowl..\$ 60
Rosepoint Etch
 #3121 goblet (8).....\$ 28.50
 #3121 champagne (8).....\$ 27.50
 #3900 8½" plates (5).....\$ 15
 #3500 4½"x15½" 3-compartment
 celery/relish, scarce.....\$ 135
 All Items Mint and Priced Each
 Unless Noted. UPS Extra.

The DAZE

***SPECIAL OFFER**
 to NCC friends \$2. off
 the 1 year subscription
 price when on this form
 or copy of.

The Original National monthly newspaper dedi-
 cated to the buying, selling & collecting of colored
 glassware and china including Depression Glass
 and the Elegant Glass (Cambridge, Heisey, Fostoria,
 etc.) We educate and inform you each month
 with feature articles by top notch columnists,
 readers "finds", club happenings, show news and a
 multitude of ads. Find those missing pieces to your
 30s, 40s or 50s pattern. Can't identify it? Perhaps
 we can help "Keep up with what's happening with
 a subscription to the DAZE. Buy, sell or trade from
 the convenience of your easy chair.

Name _____ Street _____
 City _____ State _____ Zip _____
 1 yr \$17 2 yrs \$33 \$2. Single Current Copy
 Exp date _____ Card No. _____
 Signature _____

Orders to D.G.D., Box 57NC, Otisville, MI 48463
 Please allow 30 days for your first issue - Canadian subscribers, add \$1.
 per year and subscribe by charge card only! This Special Offer may not be
 combined with any other special offer.

— Classified —

FOR SALE: Happy New Year! All Rosepoint:
 #3500/17 12" bowl \$60; #3400/6 cheese and
 cracker \$75; #3400/851 ice bucket \$120; 3 oz.
 mustard \$115; 8 oz. marmalade \$140. UPS
 Extra. **Robert Taylor**, 80 Middle St., Apt. 21,
 Gloucester, MA 01930. Phone: 508/281-4637.

BUYING: Moonlight Caprice or Rosepoint by
 Cambridge; Rose or Orchid by Heisey; & June,
 American, Fairfax, Versailles, Trojan, etc., by
 Fostoria. **Nadine Pankow**, 207 South Oakwood,
 Willow Springs, IL 60480. 312/839-5231.

FOR SALE: #3122 Diane etched: 7-1/4" gob-
 lets (11); 5" juices (12); sherbets (8); 6-1/4"
 underplates (5). Make offer. **Barbara Jennings**,
 134 Garden Parkway, Henrietta, NY 14467.

WANTED: Perfect peachblo/dianthus pink
 bridge hounds. Also amber, amethyst and blue.
Mark E. Westerfield, 6336 N. Frostwood Park-
 way, Peoria, IL 61615.

Study Club News

STUDY CLUB NEWS . . continued from page 6

Carnival Glass dealing with that made by
 Cambridge.

Mike Arent had arranged a game for us in
 naming the lines of Nearcut when shown
 examples. Judy Momirov was the winner.

Items on display for "Show & Tell" were:
 Dorothy punch bowl, base and six cups; #2651
 lamp base and shade; #2560 hatchet; Inverted
 Strawberry Carnival berry bowl; Community
 primrose toothbrush holder; Marjorie sherbet;
 Marjorie creamer; Marjorie cruet; and a
 Marjorie card tray (heart and club).

It was decided to have a \$10 general gift
 exchange at the Christmas meeting.

Our Christmas meeting will be held December
 17th, in the home of J.D. and Doyle Hanes, at
 7 PM.

submitted by J.D. Hanes

ART GLASS AUCTION

Saturday Evening, February 18, 1989

6:00 p.m.

Travel Lodge - Marietta, Ohio

Interstate 77 (Exit 1) and Route 7 North

275 LOTS of ART GLASS which includes FENTON, NORTHWOOD, DUGAN, HOBBS, MILLERSBURG, IMPERIAL, U.S. GLASS COMPANY, CAMBRIDGE

Bristol Custard Glass oil lamp; Fenton (#1921) Vasoline Topaz Opalescent Coinspot "Top Hat"; Millersburg Marigold Hobnail variant (?) 17" Vase; Northwood Green Peach pitcher w/6 glasses (signed); Fenton 9" Green Opalescent Hobnail water tankard (circa 1948); Fenton Amber Sailboat/Windmill & Flowers large footed ruffled bowl; Northwood Blue Opalescent Town Pump and Trough; Fenton vertical stripe water pitcher w/lid and cobalt handle; Northwood Sun Glow Reddish Marigold Good Luck Bowl (scarce); Dancing Ladies 18 1/2" covered urn lamp by Northwood; Fenton Honeysuckle Amber Coinspot swag lamp (circa 1948); Fenton Marigold Mikado giant compote; Northwood Custard Grape & Gothic Arch water pitcher w/6 glasses; Cranberry Swirl one-lily epergne (13" tall) (scarce); Fenton Marigold Floral & Grape Cannonball pitcher;

Auctioneer: Ross Thomas

(614)374-8629

MAIL BIDS ACCEPTED. CATALOG \$1.00 + SASE. FOR INFORMATION SEND SASE TO:

Mildred Coty
121 West 12th Street
Parkersburg, WV 26101

Terms of Sale: Cash, Traveler's Check, Cashier's Check or Personal Check with positive identification known by auctioneer. Not responsible for loss or accidents. Licensed and bonded in favor of the State of Ohio.

HAVE MORE FUN COLLECTING GLASS - JOIN A NATIONAL GLASS CLUB BECOME MORE KNOWLEDGEABLE ABOUT YOUR COLLECTIBLE GLASS

The National glass collecting clubs listed below have each been organized to serve you, the collector. Each club is dedicated to the education of the collector, and the preservation of their particular type or manufacture of glassware. Each would appreciate the opportunity to help you achieve more satisfaction from your collection.

If you are interested in membership in any of these organizations, check the list below. The appropriate club(s) will acknowledge your application with either a membership card (if remittance is enclosed) or additional information as required. MAIL TO:

NATIONAL GLASS CLUBS

P.O. Box 416
Cambridge, OH 43725

My Name is _____

Address _____

City _____ State _____ Zip Code _____

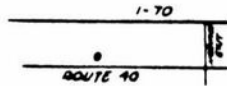
I am interested in the following club(s)

| | |
|--|---------|
| _____ Fenton Art Glass Collectors of America, Inc. | \$15.00 |
| _____ Fostoria Glass Society of America, Inc. | \$10.00 |
| _____ Heisey Collectors of America, Inc. | \$15.00 |
| _____ National Cambridge Collectors, Inc. | \$13.00 |
| _____ National Depression Glass Association, Inc. | \$10.00 |
| _____ National Duncan Glass Society | \$10.00 |
| _____ National Imperial Glass Collectors Society | \$10.00 |
| _____ Tiffin Glass Collectors Club | \$10.00 |

Please make check
payable to the name of
the organization you
wish to join

WELCOME TO CLASS COUNTRY!

STOP AND SEE US



WE FEATURE GLASSWARE OF:
CAMBRIDGE, HEISEY, FENTON & FOSTORIA

Plus a full line of Art Pottery and a General line of Quality Antiques

Stage Coach Antique Mall

RT. 40, ONE-HALF MILE WEST OF I-70 NORWICH EXIT #184
MANY DEALERS-WIDE SELECTION-PLENTY PARKING

DORIS AND ROY ISAACS
BUY AND SELL
614-872-3720



7525 EAST PIKE
NORWICH, OHIO 43767

MON THRU SAT 10-5:30 SUN 12-5:30
SUMMER EVENING HOURS BY CHANCE
MANY DEALERS - PLENTY OF PARKING

SPRINGFIELD Antique Show & Flea Market

Clark County Fairgrounds

SPRINGFIELD, OH

Exit 59 on I-70

400-800 DEALERS

INSIDE AND OUTSIDE

Ohio's largest year round show with an
emphasis on quality antiques

9:00 AM - 5:00 PM

Admission \$1.00

Children under 12 FREE

NEXT SHOW

JANUARY 21 & 22, 1989

1989 SHOW DATES

| | | |
|-------|----------|------------------|
| FEB. | 18-19 | Inside |
| MARCH | 18-19 | Inside |
| APRIL | 15-16 | Inside & Outside |
| MAY | 19-20-21 | Extravaganza |

BRUCE KNIGHT, MGR.

For Information Write
P.O. Box 2429, Springfield, OH 45501
Phone (513) 325-0053

COLUMBUS ANTIQUE FLEA MARKET (ANTIQUES & COLLECTIBLES)

Ohio State Fairgrounds - Lausche Building
Off I-71 Exit 17th Avenue - Columbus, Ohio

JANUARY 8th

Sunday Only - 7 A.M. to 4 P.M.
Show Admission \$1.50 - Under 12 Free
150 QUALITY DEALERS

SELLING Advertising Art Deco, books, Cambridge, clocks, coins, collec-
tibles, Depression glass, dolls, Fiesta, fine early furniture, Heisey, jewelry,
lamps, oak furniture, post cards, pottery, good primitives, tools and print
shop items.



4214 North High Street, Columbus, Ohio 43214
(614) 267-8163 (614) 263-6830 (614) 885-2352

NEXT SHOW: February 26, 1989



DEALERS DIRECTORY

NOTE: When writing to the Dealers listed here, please enclose a SASE!

| | | |
|--|---|---|
| <p>THE GLASS URN 456 West Main Street, Suite G. Mesa, AZ 85201 602 / 833-2702 Mail Order Shows Open Shop CAMBRIDGE, FOSTORIA, HEISEY, ETC.</p> | <p>ETTELMAN'S DISCONTINUED CHINA & CRYSTAL Cambridge a Specialty P.O.Box 6491-CB Corpus Christi, TX 78466 Phone (512) 888-8391 Include S.A.S.E.</p> | |
| <p>MILBRA'S CRYSTAL MATCHING P.O. Box 363, Rio Vista, TX 76093 Milbra Long 817 / 845-6066 FOSTORIA * CAMBRIDGE * HEISEY * DEPRESSION ERA GLASSWARE BUY and SELL</p> | <p>BENICIA ANTIQUE SHOP 305 First Street Benicia, California 94510 OPEN 11 AM - 5 PM Closed Monday Z. E. LOPES 707-745-0978</p> | <p>THE MUTED SWAN ANTIQUES 5486 Peachtree Rd. Chamblee, GA 30341 Heart of Chamblee Antique Row Specializing in Cambridge, Heisey and Fostoria Bill & Pat Miller 404-451-7620</p> |
| <p>Mama Manning's Cherished Relics 3118 Terry Rd., Jackson, MS 39212 JENELL P. MANNING VELMA PICKLE Bus. (601)372-1713 (601)353-5316 Res. (601)372-0456</p> | <p>VISIT HISTORIC BENICIA and its 28 shops Off Interstate #80 North of San Francisco</p> | <p>Elegant Depression Era Glassware ABBA ANTIQUES 1157 Charlie Lane Lilburn, GA 30247 Bill & Barbara Adt (404) 279-1942 Shows, Mail Order, & by Appointment</p> |
| <p>BOGART'S ANTIQUES Stagecoach Mall, Building #2 Norwich, OH 43767 ***** Jack and Sharon Bogart 614/826-7439 and 614/872-3514 ***** BUY - SELL - APPRAISE - REFINISH SEAT WEAVING - CLOCK REPAIR COPPER & BRASS POLISHING GENERAL LINE CAMBRIDGE GLASS</p> | <p>ANTIQUES ON THE MALL SPECIALIZING IN CAMBRIDGE GLASS Stagecoach Mall - Bldg. 3 - Norwich, OH Virginia Bennett 614/432-4483 64183 Warne Drive, Cambridge, OH 43725</p> | <p>BERKELEY ANTIQUES 69 Berkeley St., Boston, MA 02116 OPEN: Monday thru Saturday 11 AM to 5 PM GEORGE & FRANK 617/426-1048 DUNCAN, CAMBRIDGE, HEISEY, GENERAL LINE</p> |
| <p>THE GLASS CUPBOARD 39 Shire Oaks Drive Pittsford, New York 14534 Marcia Ellis Cambridge, Duncan Miller (716) 586-7596 Shows, Mail Order, Appt.</p> | <p>D & D ANTIQUES Columbus, Ohio DICK SLIFKO SHOWS ONLY</p> | <p>YOU CAN ADVERTISE YOUR ANTIQUE SHOP HERE!</p> |
| <p>"Days of Future Passed" 4 Newbrook Lane, Bayshore, L.I., NY 11706 LYNN DEZMAIN (516) 665-3890 Cambridge, Elegant Glass, D. G., Collectibles</p> | <p>JUDY'S ANTIQUES Judy Bennett 422 S. Ninth Street (Corner of Jefferson) Cambridge, Ohio 43725 BUYING Ph. 614-432-5855 SELLING Cambridge Glass my Specialty</p> | <p>"Happiness Is" - The Stultzs 3106 Warren Court, Glen Allen, VA 23060 Shows and Mail (Richmond Area) 804/262-1273 GLASS CIRCA 1890-1960</p> |
| <p>THE HITCHING POST 7467 S. R. 88 Ravenna, OH 44266 Ph. 216-296-3686 D. McDaniel CAMBRIDGE — HEISEY — GENERAL LINE</p> | <p>GREEN ACRES FARM 2678 Hazelton Etna Rd., Pataskala, OH 43062 (State Route 310 North) Sat. & Sun. 1-7 PM 614/927-1882 Antiques, Crystal Glass and Collectibles</p> | <p>CRYSTAL LADY 1819 Vinton St., Omaha, NE 68108 Joann D. Hagerty Bus. (402)341-0643 Res. (402)391-6730 Specializing in Elegant Glass & Collectibles</p> |
| <p>L & M ANTIQUES 1331 S.E. 4th Ave., Pompano Beach, FL 33060 Lydia & Cliff McNeil 305/943-2274 CAMBRIDGE & FOSTORIA OUR SPECIALTY Buy & Sell Shows Only</p> | <p>Taste of Honey Glassware—Collectibles CLARKE & CAROLE WEST 3433 Turner Dr. Springfield, OH 45504</p> | <p>MARGARET LANE ANTIQUES 2 E. Main St., New Concord, OH 43762 Lynn Welker 614/826-4418 CAMBRIDGE GLASS MATCHING SERVICE Hours Mon.-Fri. 1-5 PM or by Appointment</p> |
| <p>GLASS RESTORATION CRYSTAL AND GLASSWARE Don & Lynne Mt. Clemens, Mich. Wormland (313) 791-9191</p> | <p>REMEMBRANCES 7597 Daphne Dr., No. Syracuse, NY 13212 Shirley S. Ladouceur 315 / 458-5297 ANTIQUES and COLLECTIBLES MAIL ORDER SHOWS APPOINTMENTS</p> | <p>BUD'S TRADING POST GENERAL STORE — FLEA MARKET 501 Wheeling Ave. Cambridge, OH 43725 10-5 Mon. thru Sat. 614-432-4688 CAMBRIDGE - PATTERN - ART GLASS This Bud's for Y'all</p> |
| <p>AL STEELE Westerville, Ohio 614-882-6483 or 614-882-7124 Mail Orders and Shows Only HEISEY — CAMBRIDGE — PATTERN GLASS</p> | <p>AL STEELE Westerville, Ohio 614-882-6483 or 614-882-7124 Mail Orders and Shows Only HEISEY — CAMBRIDGE — PATTERN GLASS</p> | |



National Cambridge Collectors, Inc.

P O Box 416, Cambridge, Ohio 43725

A nonprofit organization dedicated to the preservation and study of Cambridge Glass

You Are Cordially Invited
To Become A Member Of The

NATIONAL CAMBRIDGE COLLECTORS, INC.

Benefits derived from membership include receipt of our club publication The Cambridge CRYSTAL BALL, informative Quarterly Meetings, Antique Shows Auctions, and other special events

The CambridgeCRYSTAL BALL is published the first of each month. This newsletter contains educational and interesting articles, questions and answers, information on reproductions and reissues, notices of all club functions, classified advertisements, dealers directory, and many other features of interest to collectors of Cambridge Glass

Yearly dues are \$13.00 for Individual Members and \$3.00 for each Associate Member. All members have voting rights, but only one issue of the CRYSTAL BALL will be mailed per household

Name (please print) _____ \$13.00

Mailing Address _____

City _____ State _____ Zip _____

Associate Members (Must be at least 12 years of age and living in the same household)

1 Name _____

2 Name _____

3 Name _____

Total number of Associate Members _____ @ \$3.00 each \$ _____

TOTAL AMOUNT ENCLOSED \$ _____

Please make check payable to NATIONAL CAMBRIDGE COLLECTORS, INC.

Recommended by _____

Give a gift they'll appreciate all through the year.

January 1989



HAPPY NEW YEAR



National Cambridge Collectors, Inc.
P. O. Box 416, Cambridge, Ohio 43725

FIRST CLASS MAIL

FIRST-CLASS MAIL
U.S. POSTAGE
PAID
So. Vienna, Ohio
45369
Permit No. 15

Membership Renewal Notice
This is your **last** issue of the *Crystal Ball*—if the date on your address label reads **1-89**.
Please renew now!

NATIONAL CAMBRIDGE COLLECTORS, Inc.
AUCTION INFORMATION

AUCTIONEER: CRAIG CONNELLY

ADMISSION: \$1.00

LOCATION: Shenandoah Inn
Intersection I70 & Route 285
Old Washington, Ohio (6 miles East of Cambridge)

TIME: February 25, 1989 PREVIEW: 9:00 AM AUCTION: 10:00 AM

All glass guaranteed to be Cambridge. The auction committee has checked all glass to be auctioned. All pieces should be examined immediately and returned before five items are sold if the article is not as represented. Any damage is indicated in this Catalog. If no color is indicated, the item is Crystal.

TERMS: Cash or check with proper identification, day of sale. All sales are subject to 6% Ohio Sales tax. Dealers may sign an exemption form if the items are purchased for resale, in which case, no tax will be charged.

CATALOG INSTRUCTIONS: Number references may be found in the National Cambridge Collectors publications or Welker reprints. The number in parenthesis () at the end of each listing indicates the amount of items to be sold. Bidding will be by the piece if a number occurs at the end or as a lot if pair, set or lot is indicated. You may buy 1 piece of any item if a number appears at the end of an item description.

MAIL BIDS: All bids must be accompanied by a check for each lot. Bids will be executed secretly, and the bidder will pay only the final auction price. Please include a stamped, self-addressed envelope with bids. You will be notified if you are the successful bidder. If not, your check(s) will be returned, and the final selling price will be noted. Ohio residents, please include 6% sales tax or your Vendor's #. If you wish to have the pieces shipped to you, please include a separate check for adequate postage. All pieces will be shipped via UPS the week immediately following the auction. Please include your UPS delivery address. All items are sold in perfect condition unless noted, and you may expect to receive them that way if you mail bid. All items will be carefully checked again before they are shipped. For additional information, phone (614) 826-7414.

Bids must be received by February 24 to be eligible. Mail bids to: Lynn Welker 2 East Main St. New Concord, OH 43762. Make checks payable to: National Cambridge Collectors, Inc.

Motel Reservations: Phone (614) 489-5511. Mention N.C.C. for reasonable rates. Food available on the premises.

QUARTERLY MEETING: Friday, February 24 at 8:00 PM. An informative meeting will be presented as well as a preview of the auction glass. Bring a friend and your Show and Tell glass to the meeting.

Additional auction catalogs: \$1.00 postpaid or at the door.

1. #1455 Cigarette urn & (2) #1456 ashtrays (set)
2. #1236 Amber 7½" ivy ball, Crystal ring stem & foot (2)
3. #438 Pristine 10" 2 hdd. bowl, etched Firenze, slight scratches
4. #3500/14 sugar and #3500/15 individual sugar (Lot)
5. #9 Mt. Vernon candy urn base, Sterling grapes & leaves decor
6. #1005 Peachblo Aero Optic 6½" footed vase
7. #597 Peachblo Decagon 8¾" plates, etched Cleo, signed (4)
8. #1402/4 Carmen Tally-Ho finger bowl
9. #1402/1 Amethyst Tally-Ho 18 oz. goblet
10. #21 Crown Tuscan Seashell 6" candy box & cover, Charleton roses
11. #1402/67 Forest Green Tally-Ho 6½", tall comport
12. #1402/12 Forest Green Tally-Ho 2½ oz. wines (4)
13. #1402/90 Forest Green Tally-Ho 6" 2 hdd. 2 compt. relish
14. #663 3 lite epergne base
15. #3450 Amber Nautilus 84 oz. jug water pitcher
16. #432 Jade Doric Column 9" candlesticks (match Ram's Head)(pr)
17. #32 Azurite 10½" bowl, gold trim, scratched
18. #732 Avocado 12" 4 ftd. planter (bathtub shape), hard to find
19. #732 Amber 12" 4 ftd. planter (bathtub shape)
20. #1402 Tally-Ho 11" 3 compartment deep bowl, signed
21. Ruby (from Rubina) 9½" low ftd. comport, Block Optic
22. #47 Crown Tuscan 9½" shell foot cornucopia vases (2)
23. #70 Azurite candlesticks, gold Laurel Wreath trim (pair)
24. #1070 Ebony 36 oz. pinch decanter, original Crystal stopper
25. #319 Bluebell 9 oz. Georgian tumbler, signed, rare
26. #319 Mulberry 9 oz. Georgian tumbler, hard to find
27. #319 Gold Krystol 9 oz. Georgian tumbler
28. #319 Emerald 9 oz. Georgian tumbler
29. #319 Amethyst 9 oz. Georgian tumbler
30. #319 Dark Amber.9 oz. Georgian tumbler
31. #319 Amber.9 oz. Georgian tumbler
32. #319 Royal Blue 12 oz. Georgian tumbler, hard to find
33. #317 Moonlight Blue 5 oz. Georgian tumbler
34. #317 Mandarin Gold 5 oz. Georgian tumbler
35. #3175 Moonlight Blue Georgian sherbet
36. #3175 Carmen Georgian sherbets (2)
37. #319/B/2 Smoke Georgian basket, Smoke handle, hard to find
38. Helio perfume lamp, original silverplate base, fittings, box, rare
39. #1203 Carmen 8 oz. tumblers (1 has bad mold flaw), signed (4)
40. #1176 Ebony 8" plate, gold silkscreen Lily of Valley, beautiful
41. #870 Peachblo Decagon 11" center handled sandwich tray
42. Crystal doorknobs with original fittings
43. #45 Rubina 9½" low footed comport, Block Optic
44. #3400/1116 Royal Blue 14 oz. steins, Crystal handle (2)
45. #3400/1116 Amethyst 14 oz. steins, Crystal handle (2)
46. #3400/1116 Forest Green 14 oz. steins, Crystal handle (2)
47. #3500/69 Emerald 6½" 3 compartment relish, Farber base
48. #3400 Amethyst sugar & creamer, Farber holders (pair)
49. #3400 Amethyst salt & pepper, Farber holdrs, orig. labels (pair)
50. #3400/92 Forest Green 32 oz. ball jug decanter, Farber holder
51. #3900/114 32 oz. martini pitcher, Dawn etch, unusual
52. #17 Martha Washington 7½" footed fan vase
53. Turquoise Queen salt & pepper, rare early color (pair)
54. #3790 Lynbrook cut 5 oz. ftd. juice, orig & sample room labels
55. #3139 iced teas, elaborate floral cutting (2)
56. #478 Virginian punchbowl (scratched), #170 matching 16½" plate, and (10) #488 matching cups (lines in cup handles) (Set)
57. #1315 Crystal 5" Rabbit box and cover, rare
58. #1128 Crystal Scotty bookends (2)
59. #3700 King Edward cut 9 oz. goblets, orig labels & packing (8)
60. #3707/100 Cambridge Square 4½ oz. oils, original stoppers (2)
61. #18 Crown Tuscan Seashell 10" 3 toed bowl, signed
62. #274 Crown Tuscan 10" vase, Charleton roses & mint gold
63. Helio 5½" basket, hard to find
64. #52 Carmen Mt. Vernon 40 oz. decanter, original Crystal stopper
65. #134 Virginian 10½" cake salver
66. #119 Ebony 7" basket, 10½" tall, signed
67. #1236 Forest Green 7½" ivy ball, Crystal ring sten & foot
68. #518 Peachblo 8½" Draped-Lady flower figure

69. #1040 Emerald 3" swan, Style III
70. #66 Mt. Vernon cigarette holder with ashtray foot
71. #3300 Willow Blue Moderne 6 oz. tumblers, signed (3)
72. #3300 Willow Blue Moderne 3½ oz. low sherbets (8)
73. Topaz satin Wetherford 8" bowl & (4) matching sauces, rare (Set)
74. #2653 Ribbon signed Nearcut cracker jar (1 edge chip on lid)
75. #2766 Thistle signed Nearcut 9" bowl, E crimp
76. #2660 Wheat Sheaf Nearcut 6" vase
77. #2670 Daisy signed Nearcut spooner
78. #2670 Daisy Nearcut 32 oz. decanter, original stopper
79. #2780 Strawberry signed Nearcut ½ gallon tankard pitcher
80. #2780 Strawberry tumblers (8)
81. #2651 Feather Nearcut wine
82. #2635 Radium Nearcut wine
83. #2658 Emerald signed Nearcut novelty mug, gold trim, Ollie 1912
84. Chelsea Nearcut 7" cupped comport, 6" high
85. Chelsea Nearcut 8½" oval basket, floral cut, unusual
86. #2891 Guernsey Semi-Colonial Nearcut child's cakestand
87. #2630 Emerald Colonial child's spooner & sugar(chip under edge)(set)
88. #2635 Cobalt Fernland child's creamer, hard to find
89. #2635 Fernland child's covered butter, mint
90. #2699 Buzz Saw Nearcut 6 oz. tall cologne, original stopper
91. #2699 Buzz Saw signed Nearcut 5½" nappy, C belled
92. #2766 Thistle signed Nearcut 4½" nappy, A round
93. #2699 Green Carnival Buzz Saw Nearcut tumbler
94. #2651 Green Carnival Feather Nearcut cracker jar, superb color, rare
95. #2660 Wheat Sheaf electric lamp, 12" base to top of glass plus original fittings, unusual cylinder shape unlisted
96. #2660 Wheat Sheaf Nearcut 32 oz. decanter (damage to bottom of stopper & (5) matching 23/4" whiskey tumblers (Set)
97. #2351 Nearcut 11" 4 handled vase, mint and hard to find
98. #2836 Fish Nearcut ½ gal. tankard (Welker II, p.106), very rare
99. #2833 Nearcut 9" candy horn, original closure
100. #2834 Nearcut 9" bottle horns, (1 suncolored) (2)
101. #2780 Strawberry Nearcut 6" flared, footed vase
102. #2800 Community 1 gallon ewer & bason (Welker I, p.107), rare
103. #2635 Fernland Nearcut 8" pitcher
104. #2635 Fernland Nearcut 8" vase
105. #2651 Feather Nearcut spooner & creamer (creamer signed) (pair)
106. #2651 Feather Nearcut toothpick (chip)
107. #2651 Feather signed Nearcut 7 oz. tall oil, not orig. stopper
108. #2966 Nearcut covered cracker jar
109. #518 Moonlight Blue 8½" Draped Lady flower figure
110. #518 Crystal 8½" Draped Lady flower figure
111. #1402/100 Royal Blue low sherbets, gold encr. D1007/8, rare (2)
112. #1402/11 Carmen 4 oz. low stem cocktails or oyster cocktails (5)
113. #3400/646 Amber Appleblossom etch 5" 1 lite candlesticks (pair)
114. #3400/646 Peachblo Appleblossom etch 5" 1 lite candelstick (1)
115. #396 Amber Decagon salt & pepper, platinum on foot, orig.lids (pair)
116. #2 Crown Tuscan 7" Seashell plate, Charleton roses & mint gold
117. #693/3000 Satin 2 pc. canape set, red enamel Hunt Scene, unusual
118. #1043 Peachblo 8½" swan, Style I, signed (chip on fin)
119. #6004 Crown Tuscan 6" footed vase
120. #34 Crown Tuscan 3" 3 toed shell, Charleton roses & mint gold
121. 2½" insert flower holder for blown vase, unusual
122. #3121 7" candlesticks with bobeches & prisms (pair)
123. #3400/38 80 oz. ball jug, Sterling Chrysanthemums & heavy trim
124. Carmen insert in gold Farber comport, unusual figure 8 stem
125. #3400/113 Amber 35 oz. decanter(handle line)&(4) 2½ oz. barrels(set)
126. #1402/116 Royal Blue Tally-Ho salt & pepper(large chip inside 1)(pr)
127. #15 Crown Tuscan Seashell 6" comport
128. #2674 Bennett juice extractor (lemon size) (2)
129. #432 Jade 8½" Ram's Head bowl & Jade 9" Doric candlesticks, rare (set)
130. #135 Ivory 10" cheese & crackers, gold encrusted bands (set)
131. #111 Azurite 6" sweetmeat, gold encr. fruit band decor, pretty
132. #1111 Crystal 12" Heron flower figure
133. #3011 Forest Green goblets, Crystal Nude stem (3)
134. #3011 Forest Green champagnes, Crystal Nude stem (2)
135. #1956/1 Mandarin Gold 10" hambone ashtray
136. #1956/1 Moonlight Blue 10" hambone ashtray

137. #1956/1 Smoke 10" hambone ashtray
138. #1956/1 Pistachio 10" hambone ashtray
139. #2560 Milkglass hatchet (1903 catalog,p.43), worn souv. Cambridge
140. Ebony boudoir lamp, mint gold ring decor, orig. fitting,paper shade
141. #3400/119 Amethyst 12 oz. cordial decanter & (6) Ameth. cordials(set)
142. #198 Peachblo perfume, original stopper, no dauber
143. #1352 Forest Green Frog handled vase/pitcher, rare
144. #299 5" candy box & cover, Carmen rose knob
145. #1066 Crystal stemmed ivy ball, unusual in Crystal
146. #2 Rooster muddler
147. #1 Carmen twist muddler
148. #1 Forest Green twist muddler
149. #1 Amber twist muddler
150. #P940 King Edward cut individual creamer
151. #925 after dinner cup, gold rings decor, signed
152. #925 after dinner cup & saucer, signed
153. #300 Moonlight Blue Caprice 1 oz. cordial
154. #1402/100 Tally-Ho 1 oz. tall cordial
155. Pistachio Stradivarius 1 oz. cordial
156. #1401 Jefferson 1 oz. cordial
157. #7967 Melody 1 oz. cordial, Dawn etch, unusual
158. #1327 Mocha & Pistachio 1 oz. cordials (1 of each)
159. #3400/1341 Royal Blue, Amethyst,F.Green,Carmen,Moonlight cordials(5)
160. #3500 Crystal center handled cordial tray
161. #3077 Peachblo 1 oz. cordial, wide optic
162. #3077 Amber 1 oz. cordial, wide optic
163. #3130 Amber Appleblossom etch 2½ oz. footed tumbler
164. Light Emerald Wetherford individual stemmed almonds (3)
165. #611 Peachblo individual stemmed almond
166. #611 Gold Krystal Decagon individual stemmed almond
167. #3400/70 3½" 4 ftd. cranberry, ctu #640
168. #1501 Peachblo 3" ashtrays (2)
169. #33 Crystal Seashell 4" 3 toed ashtray
170. #34 Mocha Seashell 3" 3 toed ashtray
171. Carmen Top Hat ashtray
172. #599 Royal Blue 5" coaster, signed
173. #180 cross stopper for #3400 cruet (Welker II, p. 21)
174. #400 Amber tub salt dip
175. Royal Blue tiny salt dip (2)
176. #3011/13 Amber 1 oz. brandy, Crystal Nude stem
177. #3011/13 Amethyst 1 oz. brandy, Crystal Nude stem
178. Old Home Week paperweight, etched Cambridge Glass Co. souvenir
179. #3135 Willow Blue Appleblossom etch 8 oz. goblet
180. #749 Peachblo Decagon Cleo etch 6¼" 2 handled bonbon
181. #577 Smoke 8" .horn of plenty, hard to find
182. #1540 decanters(2) with Rye & Scotch tags,bar holder,lock & key (set)
183. #168 Ivory 10" center handled sandwich tray
184. #680 Light Emerald vanity box, satin lid, marked Pat.apl. for
185. #980 5" round covered box, grey cut daisies & leaves, signed
186. 3½" Yardley jar, flesh color opaque, 11 panels, original lid
187. #3797/26 Cambridge Square salt & pepper (pair)
188. #1070 Peachblo 36 oz. pinch decanter, orig.pink stopper(slight stain)
189. #1630 Rubina 12 oz. tumbler, superb color, hard to find
190. Rubina 10" basketweave vase, engraved dot & lines cutting
191. #1040 Mandarin Gold 3" swan, Style III
192. #1040 Amber 3" swan, Style II, signed
193. Peachblo 9½" Melon Boy flower figure, very rare
194. #5 Emerald Photographic tray, 7" X 9", unusual
195. Milkglass doorknob, unusual
196. #3500/139 honey dish, original Farber hammered aluminum lid
197. #758 Ebony Decagon 5½" handled bonbon, signed
198. #3900/166 14" torte plate, BEO sorocity cut, slight scratches
199. #429 Light Emerald 10¼" pickle, heavy gold etched border
200. #70 Turtle 3½" flower block (damage to foot & tail), rare
201. #8 Cambridge Glass Co. early chemical/laboratory catalog, complete
202. #2361 9½" thin paste vase, heavy blue enamel swallows decor
203. #3797/150 Cambridge Square 6½" ashtray, Magnolia etch, usual
204. #115 Azurite 4½" ashtray with matchbook holder
205. #244 Amber 10½" service plate, Willow etch boorders (2)
206. Amber Lexington cylinder spooner, unusual

- 207. #1959 Doric goblet, airtrap stem, elaborate floral & monogram, chip
- 208. Experimental pink opalescent Everglades hdd. nappy, extremely rare
- 209. #3799 Sample etch mums and leaves 9 oz. goblet, rare
- 210. #513 Ivory 13½" Draped Lady flower figure, old style tall base, some annealing lines in base, very rare
- 211. Ivory Weatherford 8" bowl (petal edge), rare
- 212. #3400 Royal Blue jug salt & pepper (pair)
- 213. #497 Sunset Gyro Optic 16 oz. ranch tumbler, finest color, rare
- 214. #3060 Blue Cloud sherbet (NCC Color, Plate 48), original label
- 215. #3060 White Rain sherbet (NCC Color, Plate 48), original label
- 216. Carmen pressed Rosepoint goblet
- 217. Forest Green pressed Rosepoint low wine
- 218. #011 Smoke Nude compote, cupped, short Crystal Nude stem, rare
- 219. #1043 8½" swan with original glass lid & rose knob (chip under edge of rose), extremely rare
- 220. #3400/4 Amethyst 12" bowl, signed & #3400/646 Amethyst 1 lite candlesticks, gold encl. Gloria (gold wear on bowl edge) (set)
- 221. #3 Everglades 6" 2 lite cadelabrum (pair)
- 222. Cambridge door portiere chains: Royal Blue, Crystal, Amber, Mulberry, Jade, Ivory, Helio, Ebony, Azurite, Primrose (2nd strands in from each end missing 2 and 4 links), worker's novelty, usual
- 223. Ivory Doric Column 9½" candlesticks (match Ram's Head) (pair)
- 224. #626 Crown Tuscan 3¼" candlesticks, unusual (pair)
- 225. #1 Peachblo keg set (chip at top), no tray & #845 ice bucket (set)
- 226. #40 Willow Blue Everglades 6" comport
- 227. #26 Forest Green Everglades footed creamer
- 228. #P431 Cambridge Arms 13" round bowl
- 229. #628 Cambridge Arms 3½" candlebase
- 230. #1563 Cambridge Arms 4 lite candlearms (2)
- 231. #1536 Cambridge Arms peg nappies (4)
- 232. #1537 Cambridge Arms peg nappies with candlewell (3)
- 233. #1633 Cambridge Arms peg vases (3)
- 234. #19 Cambridge Arms bobeches with prisms (3)
- 235. #101 Moonlight Blue Caprice 3 oz. oil, original Crystal stopper
- 236. #52 Moonlight Blue Caprice Alpine 9½" 4 ftd. crimped bowl
- 237. #13 Moonlight Blue Caprice 3½" coasters (8)
- 238. Moonlight Blue Caprice 6" low ftd. bonbon, square, original label
- 239. #95 Moonlight Caprice 2" 4 ftd. almonds (1 mint, 3 inside rough) (4)
- 240. #101 Moonlight Blue Caprice 3 oz. oil, original stopper
- 241. #154 Moonlight Blue Caprice 5" 2 hdd. bonbon, square
- 242. #261 Moonlight Blue Caprice 5" ashtrays (1 scratched) (2)
- 243. #21 Moonlight Blue Caprice 6½" b&b plates, (slight scratches) (6)
- 244. #22 Moonlight Blue Caprice 8½" lunch plates (scratches) (5)
- 245. #151 Mandarin Gold Caprice 5" 2 handled jelly
- 246. Caprice 6½" ftd. bonbon, curved up sides
- 247. #38 Caprice sugar
- 248. #124 Caprice 8½" 3 part celery & relish
- 249. #22 Caprice 8½" lunch plates (10)
- 250. #341 Caprice 4½" vase with smooth top, unusual
- 251. #169 Caprice 6" heart dish
- 252. #235 Caprice 6" 4 footed rosebowl
- 253. #62 Caprice Alpine 12½" 4 footed bowl
- 254. #200 Caprice goblets (2)
- 255. #200 Caprice tall sherbets (8)
- 256. #200 Caprice 5 oz. ftd. tumblers (4)
- 257. #200 Caprice iced teas (8)
- 258. #3111 Candlelight 3 oz. cocktail
- 259. #3111 Candlelight 4½ oz. oyster cocktail
- 260. #3111 Candlelight 7 oz. low sherbet
- 261. #3400/54 Candlelight cup
- 262. #3400/851 Candlelight ice bucket, orig. handle & tongs, signed
- 263. #3400 Chantilly salt & pepper, Sterling bases, (pair)
- 264. #3400 Chantilly 80 oz. water pitcher
- 265. #439 Chantilly Martha cheese & crackers (plate scratched) (set)
- 266. #3138 Cantilly 7 oz. tall sherbet
- 267. #147 Diane 8 oz. marmalade, Sterling foot, lid & spoon
- 268. #3500/108 Diane 2½" candlesticks (pair)
- 269. #1268 Diane 6" 2 lite candlestick (cup crack) & 2 etched bobeches
- 270. #3122 Diane 3 oz. cocktails (3)
- 271. #3400/175 Diane cocktail shaker, original chrome lid

272. #1402/94 Elaine (gold encrusted) 12" Tally-Ho celery, beautiful
 273. #3900/100 Elaine 6 oz. oil, original stopper, some scratches
 274. #3500/14 Elaine 6" 2 hdd. ftd. bonbon
 275. #3130 Portia 12 oz. (stemmed) iced teas (7)
 276. #3130 Portia 5 oz. ftd. tumblers (4)
 277. #3130 Portia 8 oz. goblets (3)
 278. #3130 Portia 6 oz. tall sherbets (3)
 279. #3130 Portia 3 oz. cocktails (9)
 280. #3500/64 Portia 10" 3 compartment celery & relish
 281. #993 Rosepoint 12½" ftd. bowl
 282. #3400/175 Rosepoint cocktail shaker, original chrome lid
 283. #3400/67 Rosepoint 12" celery & relish
 284. #3400/1180 Rosepoint bonbon & #3400/1181 Rosepoint hdd. plate (set)
 285. #3500/64 Rosepoint (gold encr) Amber 10" 3 compt celery/relish (rare)
 286. #1402/95 Rosepoint Tally-Ho 2 part mayo & liner
 287. #3500/108 Rosepoint 2½" candlesticks (pair)
 288. #3900/74 Rosepoint 3 lite candlestick with orig. Camb. worksheet
 289. #944 Rosepoint flat creamer, unusual
 290. #3121 Wildflower 12 oz. iced teas (4)
 291. #3131 Wildflower 4½ oz. oyster cocktails (4)
 292. #3121 Wildflower 2½ oz. wines (5)
 293. #3121 Wildflower 6 oz. tall sherbets (4)
 294. #3900/19 Wildflower 2 pc. mayo and ladle (set)
 295. #3797/492 Cambridge Square 1¾" candlesticks (2 chip) (3) (Lot)
 296. #3797/493 Cambridge Square 2¾" candlesticks (pair)
 297. #1238 Amethyst 12" vase, Crystal ring stem and foot
 298. #2 Crown Tuscan Seashell 7" plate (tiny chip)
 299. #16 Helio 7½" bowl & ebony base (chip 1 foot of base)
 300. Light Emerald 9½" bowl, Block Optic, signed
 301. #3400/638 Peachblo 3 lite candlesticks, gold trim wear (pair)
 302. #3500/69 Dark Amber 6½" 3 part relish, Farber base
 303. #3500/54 Mocha 6½" 2 hdd. ftd. bonbon
 304. Forest Green comport insert in 7½" Farber Nude comport
 305. Forest Green comport insert in 5½" Farber comport
 306. #47 Mt. Vernon 11 oz. cordial decanter & (6) #87 Mt. V. cordails (set)
 307. #104 Mt. Vernon 12" 5 part celery & relish
 308. #7 Mt. Vernon cups & saucers (4)
 309. #2 Mt. Vernon 6½ oz. tall sherbets, suncolored (4)
 310. 2¾" Yardley jar, flesh color opaque, original lid & labels
 311. 1¾" Yardley jar, flesh color opaque, original lid & labels
 312. #1066 Moonlight Blue 5 oz. ftd. tumblers (7 original labels) (8)
 313. #1066 Moonlight Blue 12 oz. iced teas (3)
 314. #1402/34 Amber Tally-Ho 11½" 2 hdd. sandwich plate
 315. #1402/17 Amber Tally-Ho sauceboat, 6" plate, Crystal ladle (set)
 316. #1402/4 Amber Tally-Ho 10 oz. lunch goblets (5)
 317. #1402/23 Amber Tally-Ho 8" lunch plates (6)
 318. #1402/33 Amber Tally-Ho sugar & creamer (pair)
 319. #556 Amber 8" plates (5), #933 cups/s (1 chip) (4) #138 sug/cr, signed (Lot)
 320. #P728 5 pc. Smoker's set, 2 Moonlight & 2 gold ashtrays, label (set)
 321. #1955 Moonlight (2), Gold (2), Amethyst, Green 6 oz. tumblers (6)
 322. #1955 Moonlight (1), Gold (2), Amethyst 1½ oz. shot glasses (4)
 323. #21 Crown Tuscan Seashell 6" ftd. candy box & cover
 324. #274 Crown Tuscan 10" vase, Charleton roses and gold
 325. #18 Forest Green Everglades 14" ftd. bowl (bruise 1 foot)
 326. #70 Primrose 8" candlesticks, black & gold base trim (pair)
 327. #17 Milkglass Seashell 9" 3 toed bowl
 328. #14 Jade 10" bowl
 329. #3121 Royal Blue tall comport (1 minor nick)
 330. Light Emerald 8" rings candlesticks, cut leaves on bases (pair)
 331. Amber 8" rings candlesticks (pair)
 332. #1321 Amber 28 oz. sherry decanter, original Crystal stopper
 333. #3400/102 Amber 5" globe vase
 334. #3400/119 Amber 12 oz. decanter, no stopper
 335. #3400/64 Light Emerald 10½" dinner plates, signed (scratches) (6)
 336. #979 Light Emerald Decagon creamer & sugar, signed (pair)
 337. #3077 Light Emerald 10 oz. ftd. tumblers (1 chip) (4)
 338. #3450 Forest Green Nautilus salt & pepper, no lids (pair)
 339. #3400/48 Emerald 12" 4 ftd. bowl (scratched)