



Cambridge Crystal Ball

Published monthly by the National Cambridge Collectors, Inc.
to encourage and report the discovery of the elegant and boundless product
of the Cambridge Glass Company of Cambridge, Ohio

Issue No. 196

August 1989

Glass collectors meet for 16th year

By ROSE McAFEE

Special Reporter to "The Daily Jeffersonian" Cambridge, Ohio

OLD WASHINGTON -- It was an exciting weekend for collectors of Cambridge Glass as they converged on the Shenandoah Inn for the 16th annual National Cambridge Collectors Convention.

Using slides, Ms. Sferrazza told of the various glass-chrome combinations and the special popularity of some designs. She noted the Krome Kraft holloware of Farber is the insignia of fine craftsmanship.

Starting Thursday with the president's reception, each day and evening was packed with activities, Speakers, glass identification, educational glass seminars, and prizes were on the agenda.

Julie Sferrazza of New Jersey addressed those at the Saturday night banquet sharing her expertise about Farber Brothers Krome Kraft. She spoke of the decade between 1940 and 1950 and the connection of the Farber Brothers product to Cambridge Glass.

She said Cambridge was perhaps the greatest supplier of glass inserts for the chrome Farberware holders.



NCC Pres. Mark Nye (center) with convention speakers Julie Sferrazza and Frank Wollenhaupt.

falls of collecting glass. He and his wife Vicki found their first pieces of Cambridge -- a cabaret plate and a celery both in moonlight blue Caprice -- at a Lebanon (Ohio) flea market. And the hunt was on!

The Wollenhauts knew nothing of Cambridge Glass, but books by the Bennetts and continued on page 3

She said she regretted that the peak years of the late 1930s and early 1940s -- which were restricted by World War II -- were never again reached in the glass-chrome market.

Frank Wollenhaupt was the Saturday breakfast speaker, amusing and informing his listeners about the pit-

Cambridge Crystal Ball

Official publication of National Cambridge Collectors, Inc., a non-profit corporation with tax exempt status. Published once a month for the benefit of its members.

Membership is available for individual members at \$13 per year and additional members (12 years of age and residing in household) at \$3 each. All members have voting rights, but only one *Crystal Ball* will be mailed per household.

Back issues of the *Crystal Ball* are available (beginning with Issue No. 1, May 1973) for members only. Cost: 60 cents each or 12 issues for \$7.

1988-89 Officers & Committee Chairpersons

President	Mark A. Nye
Vice-President	Cynthia A. Arent
Secretary	J.D. Hanes
Treasurer	William C. Smith
Sergeant-at-Arms	Marlene K. Snyder
Acquisition	Lynn Welker, Bill Smith, Mark Nye, Joy McFadden, J.D. Hanes
Budget & Finance	David B. Rankin
By-Laws	J.D. Hanes
Convention	Mark A. Nye
Membership	Phyllis D. Smith
Museum—Facilities	Willard P. Kolb
Museum—Interior	Lynn Welker, Janice Hughes, Marybelle Moorehead
Non-Glass Items	J.D. Hanes, Cindy Arent, Judy Momirov
Nominating	Willard P. Kolb
Program	R. Clarke West
Project	William C. Smith
Public Relations	William C. & Phyllis D. Smith
Publicity	Cynthia A. Arent
Study Group Advisor	Phyllis D. Smith
1989 Auction	Lynn M. Welker
1989 Antique Show	Joy R. McFadden
1989 Flea Market	Marybelle Moorehead
Crystal Ball Editor	Phyllis D. Smith

Classified Advertising Rates

10 cents per word \$2.00 minimum
We cannot mix type size in classified advertisements. Abbreviations and initials will count as words. Payment in full must accompany all ads.

Display Advertising Rates

(Camera-ready ads preferred)	Members	Non-Members
1/8 page (9 items)	\$ 6.00	\$10.00
1/4 page (20 items)	10.00	15.00
1/2 page (20 items)	18.00	25.00
3/4 page	25.00	35.00
Full page (50 items)	33.00	45.00

Dealers Directory

Five-line maximum \$18.00 for 12 months

Cambridge *Crystal Ball* assumes no responsibility for items advertised and will not be responsible for errors in price, description or other information.

Advertising copy, articles, club news and notices must be in our hands by the 10th of each month to assure publication in our next issue.

Paid advertisements containing reproductions or new glass will not knowingly be accepted for publication.

Opinions or information stated in any signed article or letter printed in the *Crystal Ball* are those of the authors and may or may not agree with National Cambridge Collectors, Inc. The Editor reserves the right to refuse and to edit any material submitted for publication so as to conform with the editorial style of the *Crystal Ball*.

Please Address All Correspondence to:

National Cambridge Collectors, Inc.
P.O. Box 416 Cambridge, Ohio 43725

President — Mark A. Nye, 305/221-0343

Secretary — J.D. Hanes, 614/432-6794

Editor — Phyllis Smith, 513/323-3888

Please notify us immediately of any change in your address

Please enclose an SASE when requesting information.

CAMBRIDGE GLASS BOOKS FOR SALE

by National Cambridge Collectors, Inc.

* **COLORS IN CAMBRIDGE GLASS**
(128 pages - 60 color plates - fully indexed)
Hardbound with Price Guide \$19.95

* **1930-34 CAMBRIDGE GLASS CO. CATALOG REPRINT**
(250 page reprint of original catalog)
Hardbound with Price Guide \$14.95

* **1956-58 CAMBRIDGE GLASS CO. CATALOG REPRINT**
(164 page reprint of original catalog)
Paperback \$6.95

1985 COMBINED PRICE GUIDE
for 1930-34 & 1949-53 catalog reprints Postpaid \$5.75

*NCC MEMBERS ONLY: These publications are available at 10% discount

by Bill & Phyllis Smith

CAMBRIDGE GLASS 1927-1929
(66 page reprint of original catalog)
Paperback with Identification Guide \$7.95

by Mark Nye

CAMBRIDGE STEMWARE
(95 Stemware lines with 107 illustrations)
Paperback \$14.95

by Cambridge Buffs Study Group

NEARCUT
(108 page reprint of 1910 Cambridge Catalog)
Paperback with Price Guide \$9.95

by Mary, Lyle and Lynn Welker

CAMBRIDGE GLASS CO.
(120 pages of reprint from 8 old catalogs)
Paperback \$6.95

CAMBRIDGE, OHIO GLASS IN COLOR II
Spiralbound \$5.95

by Harold and Judy Bennett

1903 CAMBRIDGE GLASS CO. CATALOG REPRINT
(106 page reprint of an original catalog)
Paperback \$7.50

Address your orders to:

BOOKS
National Cambridge Collectors, Inc.
P.O. Box 416
Cambridge, OH 43725

Please add \$1.00 (P & I) per order.
(Not required for Price Guide)
Ohio residents please add 6% state sales tax.

DEALER DISCOUNTS AVAILABLE - PLEASE WRITE!

NCC Museum of Cambridge Glass

The museum is located on U.S. Route 40, one-eighth mile east of I-77 near Cambridge. Hours: 12 noon to 4 p.m., Wednesday through Sunday (March through October). Phone 614/432-4245. Closed Easter and July 4th.

CONVENTION continued from page 1

the Welkers enlightened them a little. They met the Smiths and Rankins and became involved with NCC.

The Wollenhaupts, defying authorities who claimed their frog shaped pitcher was an Italian import, found later that they were right and proudly claimed it as Cambridge.

Odd pieces are sometimes acquired, he noted. "But when you give away an unmatched lid, you find the bottom half the next week! It is the hunt for specific glass, the research, the meeting of other collectors, which makes it fun." he concluded.

President Mark Nye presented name paper-weights to both Ms. Sferrazza and Wollenhaupt for their programs.

Dinner was served Saturday evening to 200 guests at tables centered with Cambridge Glass bowls flanked by matching candlesticks. Flowers were arranged in the glassware by Deanne Gray, Mary Alice Upton and Shirley Douglas of NCC and Louise Williams and Lola Cihon of the Eureka Garden Club. Invocation was by Marybelle Moorehead.

Door prizes were given and convention souvenirs were teal blue Mount Vernon cordials, reproduced by Mosser Glass.

Special guests were Frank and Julie Leyshon who opened their home Saturday afternoon to NCC members for a tour. The home was the former residence of A.J. Bennett, president of Cambridge Glass Co.



This photo, taken in the former A. J. Bennett home, shows the beautiful living room. Note the lovely brass fireplace, the beamed ceiling and the ceiling and wall lighting fixtures



This original, leaded glass and brass, lighting fixture hangs in the formal dining room of the former home of A. J. Bennett, President of the Cambridge Glass Company.

Earlier in the day, NCC members visited the Tudor home to view the extensive restoration done to the 1907 vintage Bennett Dwelling. The beveled and leaded windows and tiger oak paneling added charm to the interior, visited by 125 members.

Charles Upton, one of the earliest of NCC members, displayed three Cambridge stems in the rare (experimental) tomato color. He explained only five exist, since the formula pot blew up and no more were made.



Charles Upton and Lynn Welker examine the extremely rare tomato colored cocktails presented to NCC from the Mosser family.

The three pieces were given to the club by Marjorie Addison and Tom Mosser, who retained two of the stemware pieces. The club will place one in the Museum and offer the other two for sale at the annual Auction to be held in February 1990.

continued on page 4

CONVENTION continued from page 3

Mark Nye, hosted the gala Convention Chairman's reception, on Thursday evening, to open this year's convention. The party-time event began four days of recognitions, demonstrations, seminars, food and fun.

Activities rotated between Shenandoah Inn and the club's Museum of Cambridge Glass.

NCC members met Friday morning at the NCC Museum for a "Coffee with Cambridge." Special guest was Bill Davis, representing the local Chamber of Commerce.

Afterward, Sid Garrett, a master glass cutter whose work years were spent at the Cambridge glasshouse and the LaFlo Co., demonstrated his art of incising designs on glass.

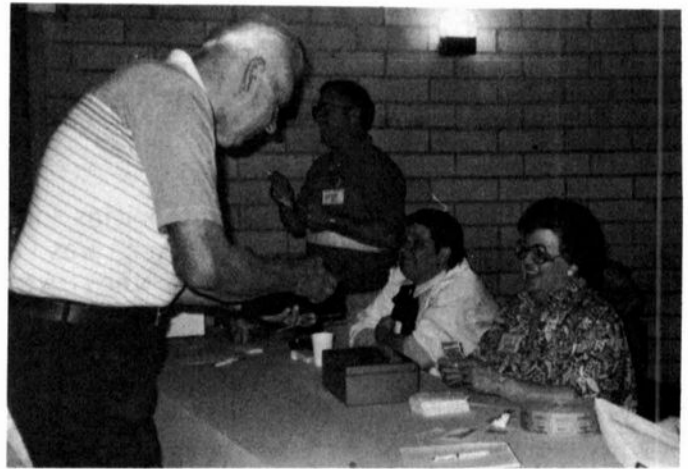


Watching intently as Sid Garrett demonstrates his art of glass cutting are: (l to r) Don Wormland, Michigan; Bill Losch, California; and Pat Daly, Pennsylvania.

Working with improvised equipment in the NCC storage building, Garrett took plain pieces of glass and enhanced them with cut designs and flowerettes, leaves and fern fronds as NCC members watched. A relish dish, on which he marked a variety of designs, was auctioned that evening at the club's mini-sale, bringing a special price for a "one of a kind" piece.

Thousands of pieces of the select glass -- Rosepoint, Chantilly, Caprice and others -- were on display and for sale in the ballroom at Shenandoah Inn.

As always, the Antique showroom was outstanding with its beautiful array of glass, displayed by twenty-five dealers from thirteen states. First in line, beginning at noon for the



Antique Show chairman Joy McFadden (right) and her assistant Mary Beth Hackett are shown here selling tickets. Willard Kolb is in the background.

5 p.m. opening, were NCC members Glen and Louise Everett from Everett, Washington. Opening time saw the line extended the full length of the Shenandoah main hallway.

Recognition was given several persons during the Friday evening gathering, by President Nye. He recognized board members and introduced Mary Martha Mitchell, longtime secretary to A. J. Bennett, president of Cambridge Glass Co., and later president of the firm herself when it was started again in the 1950s. Janice Hughes was cited for having served as secretary for 14 years and Priscilla Southworth commended for helping with the convention registration.

NCC Board members elected, were: Willard Kolb, Joy McFadden and Doyle Hanes.

A mini-auction was held, bringing in \$882 for the Club's museum expansion fund. Kolb served as auctioneer, with Bill Smith, Frank Long and Julie Sferrazza as runners.

The "Show & Tell" program by Lynn Welker, held Saturday afternoon, has gained in popularity at each convention, drawing a full house in the back of Shenandoah's dining area.

Welker, an expert on glass identification, commented on the various pieces brought to him. "Beautiful, beautiful," he said about a Cambridge Carnival Inverted Strawberry butter dish.

He called a Stratford lavender jar, the fore-runner of Mount Vernon, "a great piece." An atomizer by Cambridge in crystal with black

enameling brought out the single comment, "Wow!"

Afternoon seminars on glass included "Cambridge Etchings," "Cambridge Colors" and "Cambridge Stemware." Three new transparency projections, prepared and narrated by Nye, informed more about the locally made glass. "Cambridge in the 1940s" used catalog pages and advertising material to show how the local firm promoted its product. It showed the types and colors of glass produced in those years and how the war affected sales.

"Rock Crystal Engravings" introduced viewers to patterns created in the 1920s, 1930s and 1940s. Magazine ads called the locally made glass "the aristocrat of the dining room" and likened the handcrafted rock crystal to "a flame with beauty."

"Rose Point" provided information on the most popular of Cambridge's etchings. Patterned after French lace, Rose Point was frequently given for wedding gifts. A recently published N.C.C. book on "Rose Point" by Mark Nye, is available at the convention and at the museum.

Sunday's breakfast was followed by the annual meeting, with Nye presiding. Reports were by Bill Smith, J.D. Hanes, Phyllis Smith, Lynn Welker, Janice Hughes, Marybelle Moorehead, Willard Kolb, Judy Momirov, Cindy Arent, Joy McFadden and David Rankin.

It was reported that the Saturday morning Flea Market was well attended, by both glass dealers and collectors alike. Held at the school building in Old Washington, beginning with dealer set up at 5 a.m., it was all over by noon. Marybelle Moorehead was chairman of this project.

A carmen Japonica vase was presented to the museum by the Welker family in memory of Lyle Welker.

Phyllis Smith announced membership now stands at 1,313, an increase over the past year. A memorial tribute was paid to deceased members.

Members were reminded that the 200th issue of the club's publication the "Cambridge CRYSTAL BALL" will be printed in December.

Consignment lists of glass for the February Auction should be sent to Lynn Welker starting September 1.

The new book on Rose Point Glass is now available at the museum or by mail order. The club plans a printing of one on Caprice in the coming year. Members were told that payroll records of the old glasshouse are being bound and may be seen at the museum. A list of former workers there is being compiled.

Reports were made by study group representatives: Mark Nye, Florida Everglades; Bill Losch, California Cambridge Collectors; Charles Upton, Cambridge Buffs; Judy Momirov, Cambridge Cordials; and Clarke West, Miami Valley of Ohio. Museum donations of time and money were made by these groups

Members were told the old glasshouse time clock has been restored and its mechanism is working. It is in the expanded section of the museum.

The NCC picnic will be held at noon on August 5, at the museum service building, with a potluck dinner to be served. The next quarterly meeting will be November 4.

EDITOR'S NOTE: We very much appreciate and wish to thank Rose McAfee for her time and the effort she expends in our behalf, providing such outstanding publicity for our annual conventions.



ROSE McAFEE

This gracious lady has been attending our annual convention for many many years. She began her coverage while a full-time employee of The Daily Jeffersonian and when she retired a few years ago, she continued to attend and has always provided us with the very best coverage - including photo's and advance publicity as well.

We do wish to take this opportunity to say "Thanks Rose" you are very much appreciated!

This article is comprised of two separate articles which appeared in The Daily Jeffersonian on June 24th and 26th.

Photo's used in this issue of the CRYSTAL BALL have been provided courtesy of Rose McAfee, Judy Momirov and Cindy Arent.

Club News

National Cambridge Collectors, Inc.
Sixteenth Annual Meeting
June 25, 1989
Shenandoah Inn
Old Washington, OH

The meeting was called to order at 9:55 a.m. by President Nye. In attendance were twelve Board members and approximately 100 club members from 25 states.

The minutes of the previous meeting held on February 24, 1989, were read by J. D. Hanes and approved.

The treasurer's report was given by Bill Smith showing the Operating Equity to be \$22,881 and the Museum Equity to be \$125,136 for a total of \$148,017. He reported that these figures are a little lower than those reported in February, but that there is no real worry. He stated that in our Checking account the balance is \$4,248 and in the Money Market account the balance is \$12,817 for a total of \$17,065. He stated that this is a little better than in February. He stated that miscellaneous donations had been coming in, in the form of tools, supplies, etc., as well as money, and thanked all those who had given.

COMMITTEE REPORTS

MEMBERSHIP: Chairman Phyllis Smith reported that we have had an increase since the report of last year, which was a total of 1,246. She reported that as of today, we have 945 individual members, 361 associate and 7 honorary, for a total of 1,313. This is an increase of 67 over last year. She thanked everyone who had signed up new members. She then remembered those who have passed on since the last annual meeting.

CRYSTAL BALL: Editor Phyllis Smith reported that the July issue was in the registration packets and the remainder would be mailed on Monday. She reported that by doing this we had a savings of over \$50 in postage. She also reminded that the binders for the CRYSTAL BALL, as well as back issues of the CRYSTAL BALL, are on sale. She then reported that the December issue of the CRYSTAL BALL will be the 200th, and

asked members to contribute advertising, articles, or Christmas greetings for this special issue. She stated that ideas for articles, as well as articles themselves, are always appreciated.

President Nye thanked Phyllis Smith for all the work that she does on the CRYSTAL BALL.

AUCTION: Chairman Lynn Welker reported that he will be receiving lists of glass only from September 1 until October 1. He restated that this is lists only. He stated for people not to send glass.

MUSEUM INTERIOR: Janice Hughes reported that the new showcases had been installed and filled. Also that the front of the Museum had been totally cleaned and would work on the back for next year. She thanked all those who had helped with the cleaning of the Museum and the installation of the cases. Lynn Welker thanked those who have helped also, as well as those who have donated or loaned glass to the Museum. He then reported on some of the donations of glass that had been given over the weekend.

President Nye reported that the large Japonica vase in carmen was being donated by the Welker family "In Memory of Lyle Welker."

MUSEUM FACILITIES: Chairman Willard Kolb reported that as soon as it stops raining they will be working on the drainage problem on the Museum grounds.

BY-LAWS: No report.

NON-GLASS ITEMS: J.D. Hanes reported that they have cleaned approximately fifteen boxes of molds, the rack of snaps and puntys, and the storage building in general. He also reported that they had set up a display, in the back of the Museum, of tools and a mold. They had also set up the cutting lathe for Sid Garrett to use on Friday morning at the Museum. He also reported that the payroll records had been bound. He thanked all those who had helped in these jobs. J. D. Hanes then thanked those who had helped him during this first year as Secretary of the club. He reported that this year in addition to the usual letters the club received, we had received one from a dealer outside of Sidney, Australia.

continued on page 15

Former glass workers swap memories at reunion here

By ROSE McAFEE

"It brings back memories," Clara Colvin, former glasshouse worker, commented as she looked over the shelves at the National Cambridge Collectors Inc. Museum of Cambridge Glass.

The occasion was the annual reunion of former workers at the old Cambridge glasshouse, held Sunday in conjunction with the NCC Convention.

Mrs. Myrl Hill registered 52 former workers, plus relatives and friends, who came for the event. It was an exciting time as friends greeted former co-workers, shared stories with them and looked over the glassware they helped make. Bill Smith of Springfield arranged the reunion. Refreshments were served by Roger and Marjorie Seaton.

Velva Vandenburg told friends, "I started in the glasshouse when I was 16 years old."

George Yonek of Charlotte Harbor, Florida, went about asking "When did you work there? Oh yes, you were in my department."

Mary Burik, 87, of Byesville says she never misses the reunion. She worked in the etching department years ago. Still driving, she brought other friends to the reunion.

Andy Kulick of Barberton was looking for old glasshouse friends. "Anyone from Derwent?" he asked.

Harold Conrath worked in the hot metal department at the glasshouse, but was taught how to "pull bits" by "Toothpick" Goodwin. "He liked to have fun on weekends and wanted someone who could do his work."

Conrath tells that the little artist paint pots

were made with a wooden stamp. "We didn't cut the bit. We 'pulled' it. We could do 1,200 of them in four hours." Conrath presented an amethyst paint pot to the museum.



l to r: Richard Anderson, John Yonek and Wilbert Watson, former Cambridge Glass Co. employees, talk about old glasshouse days.

Carlos Potts, retired Lore City postal worker, was a timekeeper for the Cambridge glassworks from 1945 to 1954. "I worked with Walter O'Malley and was there when it (the glasshouse) went under."



Longtime Cambridge Glass Company employee Mary Martha Mitchell and NCC board member Clarke West enjoy a quite visit during the Former Glass Workers Reunion.

Pearl Conrath said she cut out prints in the etching department. Her father had told her never to accept a supervisory job. "You're on your way out then!"

Gwen Cortese of Winter Haven, Florida, did not work in the glass plant itself. "But my sister, Betty, and I had the job of taking tourists through."

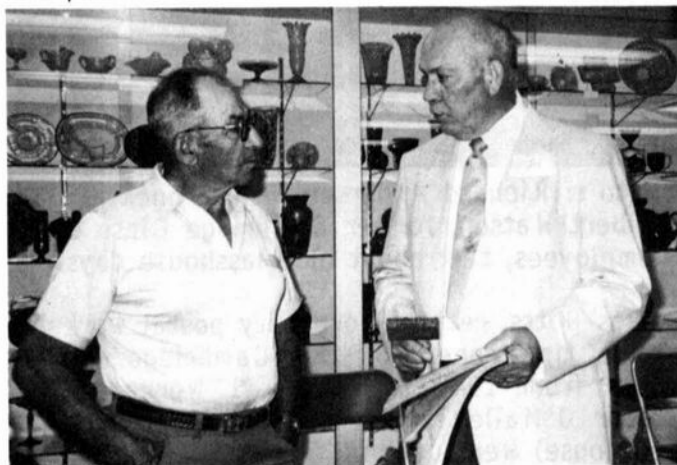
continued on next page

REUNION continued from page 7

Audrey McDowell enjoyed seeing the colorful glass in the new cases in the expanded room. She presented two prisms with the Cambridge Glass Co. name imprinted on them to the Museum.

Mike Lengen donated some glasshouse payroll sheets to the Museum.

Ed Lehotay shared a book, "China, Glass and Lamps," printed in 1926 which contained glasshouse ads and had a 25 year history of the plant.



Ed Lehotay (left), former glasshouse worker, shows a book and a stamper to Bill Smith at the former workers reunion.

Mary Martha Mitchell served as secretary to A.J. Bennett, president of Cambridge Glass Co. She later held that position herself when the glasshouse reopened.

"I don't want to miss a single one," she said, trying to talk to all the former workers.

Among the longtime workers present for the reunion were: Beatrice Saltz Horton; who started at the glasshouse in 1923; Andy Kulick, who worked from 1921 to 1936; Leroy Conrath, a gatherer from 1923 to 1954; Pearl Conrath, who was in etching and decorating from 1923 to 1944; and John Yonek of Grove City, Ohio, Foreman in hot metal from 1927 to 1952.

Other former employees in attendance who have not been mentioned previously were: Dorothy Babcock; Olga Berilla; Nettie Bohannon; Mildred Bowman; James Boyd; James J. Boyd; Julia Branchik; George Buttress; Clara Colvin; Ralph Cramblett; Sid Garrett; Alice Holmes; Daisy Moffatt Hagan;

Helen Hosko; Alice Howell; John Krak; Michael Kulick; Anna Lengen; Fern Lengen; Helen Lucas; Margaret Lucas; Helen Marsh; Dorothy McFarland; Vernon Mercer; Mary Rudish; Fred Steele; Dorothy Steele; Susanna Stillion; Clara Valentine; Elva Volz; Maxine Weisenstine; Mabel Williams; Mary Williams; and Vada Wilson.

There were sixteen new glasshouse workers in attendance at this year's 6th Annual Reunion, hosted by N.C.C., Inc. Four of the attendees hold the distinction of having been present at each Reunion. They are: Alice Howell; John Krak, Mary Martha Mitchell, and Bill Smith.

All former Cambridge Glass Co. employees are invited and urged to attend these yearly get-togethers'. If you know a former worker who is not aware of these meetings, please inform them and/or send their name and address to the club.

Study Club News

STUDY GROUP #11 - ILLINOIS "THE CAMBRIDGE NUDES"

The Cambridge Nudes Study Group held their latest meeting on May 1st. There were eleven members present.

A surprise pizza birthday party was held for our May meeting. Mary Scharf was the guest of honor.

"Show & Tell" displayed some rare and lovely items. Ivory one bun 12" Geisha flower holder with base; Primrose Community line pin box; #3011 Nude cocktail w/crystal stem and royal blue bowl; topaz Sauterne w/crystal Nude stem; #3400 Temple jar, royal blue w/pewter design overlay of ships; crystal Nude cigarette box decorated in silver hunting hounds; large crystal star candleholder; #867 willow blue cream and sugar etched Cleo; and a pair of #439 7½" Rubina candlesticks.

PENNSYLVANIA STUDY GROUP

If you live near Lansdale, Pa. and are interested in joining a Cambridge Study Group, please write to: Pam and Bill Earussi, N.C.C., Inc., P.O. Box 416, Cambridge, OH 43725.

FROM THE PRESIDENT'S DESK —

As I said at this time last year, little did I realize when I joined NCC some years ago that I would someday be president of the organization. Even now, having just completed my first term of office and beginning the second, I am still just a little amazed that things turned out the way they have. Since a new year is beginning for the club, I thought I would take time this month to review what has taken place during this past year, as well as my thoughts on what we, as a group, must face in the coming months and years. You might call this a "State of the Club" message.

The display area at our Museum was increased this past spring by eliminating the meeting room, rearranging existing display cases and the purchase of eight free standing cases, seven of which are located in the rear room. These new cases, made entirely of glass, have their own top lighting and have been utilized this year to display etchings and cuttings.

We now have, mounted on a wall at the museum, pictures of all three Cambridge Glass Company presidents, Arthur J. Bennett, Wilbur L. Orme and Mary Martha Mitchell. Hanging nearby is a refurbished and functional factory time clock.

Expansion of the display area also permitted a small collection of tools to be brought down from the storage building and put on display. Additional items, from the museum's collection, are also on display for the first time, including Mr. Bennett's personally signed copy of Catalog No. 10.

A major fund raising drive, with a goal of \$100,000, was initiated early in 1989. It is hoped a large portion of the goal can be raised by each member pledging to give \$104 over the next two years, the length of time the drive is slated to run. The monies obtained from the drive are to be used for two purposes; acquisition of glass for the museum and museum expansion. Even with the expanded display, the museum is cramped and additional collections would be loaned for display if space was available.

The past year saw two of our books go out of print, the 1930-34 and the 1949-53 Catalog Reprints. A few copies of the 1930-34 Catalog Reprint remain in stock, but the 1949-53 is no longer available. The 1956-58 Catalog Reprint is also out of stock, but is in

the process of being reprinted. Also out of print is "Cambridge Stemware" by Mark Nye, but it is anticipated a second edition will be published early next year. The good news is the long awaited Cambridge "Rose Point" has been published and is available for immediate shipping. (See page 17 for information.)

Where do we go from here? During the next year your Board of Directors and the membership at large must address, at least in preliminary form, and in some instances resolve, several important issues. The need for additional operating funds, improvement of existing museum grounds and museum expansion or relocation, and publications. These are briefly covered in the following paragraphs.

Financial operations of the club and the museum are kept separate. Museum operations include maintenance of the building and properties, costs associated with operation of the museum and glass acquisitions. Club operations include the newsletter and other membership support with the primary source of income being membership dues. For the past two years, club operations have ended the year with deficits. Granted they have been small, but none the less, income is not matching expenses. The primary expense of the club is publication of the newsletter and every effort has been and is being taken to keep costs down. But, the time has come when there are no other ways to reduce expenses and still provide a quality publication. Thus, we are faced with the issue of increasing membership fees versus a reduction in services. The question of an increase in membership fees will be brought before the Board at it's August meeting.

After a very dry 1988, the Cambridge, Ohio, along with the surrounding areas, had a very wet spring. An existing problem with ground water and drainage of the museum property has developed into a situation that must be addressed in the near future. The land between the museum building and the storage building simply does not drain well and the driveway into the storage building becomes quite muddy with the least amount of rain. Some work has been done, but it did not resolve the problem, only provided temporary relief. We expect to have consultants examine the property in the next few weeks and inform us what needs to be done to correct the situation. Whatever the proposed solution, it will probably not be inexpensive. At the

continued on next page

same time, additional landscaping to improve the overall appearance of the property may be undertaken, along with connecting the museum to the city water supply.

Our current museum building does not provide sufficient office or library space and we could currently use more display areas, if such were available. In the not so distant future the need for additional display space will become critical; as will the need for a library or research room and replacement of the meeting room. Further expansion of the present building is probably not recommended since it is located in a flood plane. Maintaining the museum at the present location most likely means erecting an entirely new building on higher ground, behind the present building. If we are to do this, then any land improvements, including those to improve drainage, must be carried out with this in mind.

At this time, it is not known if Collectors Books will reprint the 1930-34 and the 1949-53 catalogs. If they elect not to, then the issue of NCC undertaking the project will be addressed by the Board of Directors. The issuance of any book by the club itself means a substantial outlay of cash. However, over the years, book sales have been a main source of continuing income for the museum and well worth such an investment. We do hope to have a new book ready by Convention 1990, the subject of which will be Caprice.

Overall, the organization as a whole, and its museum, continues to be viable and is where I expect it should be at this time, given its age, the development of the museum and available resources. None of the issues facing us are insurmountable and the final solutions may only require a little more commitment, on the part of each and every member, to be realized. If we all do our fair share and give support thru whatever means is possible, our goals will be reached.



THANKS!

submitted by J.D. Hanes

Our club could not operate without dedicated volunteers. Those recognized at the Annual meeting and what they helped to do, are listed below.

CRYSTAL BALL: Phyllis Smith, Mary Nye, Bill Smith, Mark Smith, the Cambridge Cordials.

MUSEUM INTERIOR: Janice Hughes, Lynn Welker, Marybelle Moorehead, Judy Momirov, Cindy Arent, Mike Arent, J.D. Hanes, Doyle Hanes, Larry Hughes, Willard Kolb, Mark Nye, Charles Upton, Mary Alice Upton, Bill Smith.

NON-GLASS ITEMS: J.D. Hanes, Cindy Arent, Judy Momirov, Mike Arent, Carl Beynon, Shirley Beynon, Rich Bennett, Sally Bennett, Kevin Weinman, Lorraine Weinman, Doyle Hanes, Dick Storck, Charles Moorehead, Marybelle Moorehead, Neil Ross, Willard Kolb, Dave Rankin, Sue Rankin, Sid Garrett, Bill Smith, Ed Smith, Josh Blackledge.

SECRETARY: J.D. Hanes, Janice Hughes, Bill Smith, Phyllis Smith, Mark Nye.

CONVENTION: Mark Nye, Priscilla Southworth, Frank Wollenhaupt, Julie Sferrazza, Beverley Hanson, Clarke West, Carole West.

FLEA MARKET: Marybelle Moorehead, Mike Arent, Lynn Welker, W.T. Dawson, Charles Moorehead.

ANTIQUE SHOW: Joy McFadden, Mary Beth Hackett, Betty Peary, Willard Kolb, Mark Nye, Clarke West.

This is but a small list of the people who help out each year. It is not possible to list everyone here. Of course, those who are in our Study Groups are a big asset also. Again, thanks to all of you who help make our club a success.

Editor's Note: In the photo, shown here on the left, please take note of the beautiful old time clock that was once used in the Cambridge Glass factory. We are sorry, but we cannot identify the folks shown in this photo taken during the former workers reunion.

Gwen Mitchell Cortese

Worker Of The Month

by MIKE & CINDY ARENT

The Cambridge Cordials Study Group did not meet as usual this past month due to all of the activity surrounding the NCC Convention. A few of the members did, however, get a chance to video tape an interview of former Cambridge Glass Co. worker, Gwen Cortese.

Gwen Mitchell Cortese started work at the Cambridge Glass Co. in 1940. Her first and only position was that of Visitor's Tour Guide. As tour guide, she conducted as many as four one hour tours per day until the plant closing in 1954. During her 16 years, thousands of visitors toured the plant and heard Gwen's colorful description of how Cambridge glass was made.



GWEN MITCHELL CORTESE

When we asked Gwen to describe a typical plant tour, we found that she remembered exactly how it went. Her tour description is interesting because it gives an overview of each department while at the same time tying together the many departments into a complete factory description.

Gwen started the tours by leading visitors out of the showroom onto the factory floor. The first pot they would encounter would be where blown ware was made. Gwen described for us what the visitors would see and went into detail on the many steps to constructing a blown goblet. She also gave us a detailed description of how a ball bottom tumbler was made. According to Gwen, all ball bottom tumblers were blown by the same worker, George Pettit.



MIKE & CINDY ARENT

After seeing a blown piece made, the visitors were led to another area where they could watch workers make pressed ware. Gwen's description of this area includes a detailed description of workers pressing a punch bowl. Gwen stated that she always started off by giving the visitors the opportunity to see both a blown and pressed piece being made.

Moving on, the visitors were taken past the Lehr and into the finishing department where the tops were cut and polished. From there they would go to the grinding room where some pieces, such as ball bottom tumblers and ash trays, would have their bottoms ground and polished.

After leaving the grinding room, the visitors would be taken to the cooper shop where they would watch the resident barrel maker make wooden barrels for packing and shipping Cambridge glass. This trade had been handed down for several generations within the family of Dutch Conrad. The last two generations of the Conrad family, Dutch and his son, made barrels at the Cambridge Glass factory.

Next, the visitors were taken to the etching department where they witnessed the many steps involved in the etching process. This was followed by a tour of the cutting and decorating departments, and finally the packing and shipping area.

When the tour was all done, the group returned to the showroom where Gwen gave each of them a souvenir Bridge Hound, a booklet on the history of the Cambridge Glass Co., and leaflets on many of the different glass patterns. Visitors were not allowed to purchase glass from the showroom, but were always referred to local merchants where they could make purchases.

Convention Reflections

by J.D. HANES

The 1989 NCC Convention is now history. One thing about the convention is that it is always enjoyable. This year was no exception.

It is always great to see people that you only get to see once a year or so. Many of whom travel quite a distance to attend the convention.

Another thing that you can count on, is to make new friends from near and far. All of these people are very special. Even those from New York that take you to their room to show you the way they set up the Cambridge Arms set they have purchased at the show!

It was nice to see a year's work come together by convention chairman Mark Nye and his other chairmen. I am sure that individual thank you's are in his article, so I will not duplicate him.

However, I would like to express my thanks to several special folks who helped me with the project of setting up the area for the cutting demonstration, that was held on Friday morning, in the service building. They were: Neil Ross, Cindy & Mike Arent, Marybelle Moorehead, Doyle Hanes, Willard Kolb, Josh Blackledge, and last, but definitely not least, Sid Garrett, master glass cutter and former cutter at the Cambridge Glass Co.

To end on a light note, there are always traditions: the Saturday afternoon power failure; the social time in the first floor rooms until late, late, late; the "what am I doing up at this hour?" look on faces at the Flea market beginning at 5 a.m.; and of course, the trials Frank and Vicki Wollenhaupt experience each year with their coat rack!

It's always nice to look forward to next year. Until then, think "Convention 1990!"

The Cullet Bin

Non-Glass Items Committee

In order to help with the cleaning of molds and tools in the NCC storage building; and in keeping the building clean, we are in need of the following items:

Floor squeegees with handles
Cans of WD-40
Plastic trash Cans (outdoor size)
Hand cleaner (D/L cream type)
Wiping cloths and rags
Work gloves
White chalk
Step stool
Step ladder

If you would like to donate any of these items, they can be dropped off at the Museum, or shipped to: N.C.C. Secretary, J.D. Hanes, 308 N. 6th St., Cambridge, OH 43725.

Where Was Frank??

by J.D. HANES

After reading the minutes of the Annual Meeting, many of you may be asking, "What happened to the annual speech by Frank Long of Cleburne, Texas?" Well, with his permission, here is Frank's speech. He asked that we please pay attention to the Whereas's and the Therefore's.

"Whereas, the 1989 N.C.C. Convention has been a great success and, Whereas, the officers, Board and committees have spent many long hours and, Whereas the out-of-towners have been the recipients of this hard work, planning and any other task to make this convention one of the greatest, Therefore, let it be resolved that all of the afore mentioned be commended for the success of the 1989 N.C.C. Convention with a standing ovation."

FRANK LONG
June 25, 1989

WE GET LETTERS

Dear Phyllis and Bill,

Just a note to tell you how fabulous I thought convention was -- it was the most well orchestrated convention I've ever attended. I now realize that a handful of people from Ohio, plus Mark (Nye), do most of the work for the N.C.C. and the convention. I'm hoping that next year I can offer my services in some capacity. We'll (Pat and her mom Ann Horgan) see you at convention 1990 if not before.

Best Wishes, Pat Daly
Pennsylvania

Molasses Cans.

SCALE, HALF SIZE



No. 2506 Molasses Can.
Capacity, 13 ounce.
Packed 7 dozen in a barrel



No. 2530 Molasses Can.
Capacity, 18½ ounce.
Packed 6¼ dozen in a barrel.



No. 2534 Molasses Can.
Capacity, 12 ounce.
Packed 10 dozen in a barrel.



No. 2525 Pressed Glass Lip Molasses Can.
Capacity, 16 ounce.
Packed 5¼ dozen in a barrel.



No. 2538 Molasses Can.
Capacity, 15 ounce.
Packed 6¼ dozen in a barrel.

Molasses Cans

79

SCALE, HALF SIZE.



No. 2533 Molasses Can.
Capacity, 18½ ounce.
Packed 6¼ dozen in a barrel.



No. 2529 Molasses Can.
Capacity, 16½ ounce.
Packed 7¼ dozen in a barrel.



No. 2526 Blown Molasses Can.
Capacity, 18½ ounce.
Packed 7 dozen in a barrel.



No. 2527 Molasses Can.
Capacity, 14 ounce.
Packed 8½ dozen in a barrel.



No. 2522 Blown Molasses Can.
Capacity, 24½ ounce.
Packed 5¼ dozen in a barrel.

MINUTES continued from page 6

NOMINATING: No report.

CONVENTION: Chairman Mark Nye reported that it is almost over. He thanked all of those who had helped, especially Rose McAfee who has retired from The Daily Jeffersonian, but continues to do the articles for us.

He stated that he would not be Convention chairman next year and asked for volunteers.

FLEA MARKET: Chairman Marybelle Moorehead thanked all those who helped make it a success. She reported an approximate profit of \$1,350.

ANTIQUÉ SHOW: Chairman Joy McFadden thanked all of those who had helped during set-up and those who had worked at the ticket table. She asked if any dealers wanted to be on the waiting list for next year to contact her.

PROJECTS: Chairman Bill Smith reported that the binder sales have gone well. We had sold approximately 100 at the Auction. He reported that a second order from the supplier had been placed. He reported that the Rose Point book had been selling well and thanked Graphic Printing.

STUDY GROUP ADVISORY: Chairman Phyllis Smith stated that she would call on each group for a report.

Florida Everglades: Mark Nye reported that they were inactive.

California Cambridge Collectors: Bill Losch reported that they meet two or three times a year. He presented the club with a check for \$450.00.

Fingerlakes: Phyllis Smith reported that they are inactive.

Cambridge Buffs: Charles Upton reported that they have not been too active but hoped to change that this year.

Michigan Caprices: Phyllis Smith reported that they had disbanded.

Tuscan Crowns: Phyllis Smith reported that she had received reports from them and a donation.

Cambridge Nudes: No report.

Miami Valley of Ohio: Clarke West presented a donation of \$300 from the project on Thursday night.

Cambridge Cordials: Judy Momirov reported that they had donated two stems to the Museum. One cut Achilles and the other cut King Edward. She also reported that they had supplied the materials and the labor for the binding of the payroll records, the video tapes and equipment for the taping of the former workers from the factory and had been sending in an article to the CRYSTAL BALL almost monthly. She then thanked Doyle Hanes for donating the money for the mechanism of the time clock from the factory to be restored and she thanked J. D. Hanes for doing the work on refinishing the case of the clock. She encouraged all to see it.

PUBLICITY: Chairman Cindy Arent reported where she had placed advertising, free and paid, this year.

PUBLIC RELATIONS: Bill Smith reported that they would be attending the Medford, Oregon show in September and the Dearborn, Michigan show in November. He reminded club members of the Quarterly meeting dates of August 5th and November 4th, and encouraged all to attend.

OLD BUSINESS: President Nye reported that a list will be published in the CRYSTAL BALL of Museum owned stems.

President Nye then reported that a list will be published in the CRYSTAL BALL of those who have given their total pledge amount of \$104, in either money or goods. He stated that we would continue to publish lists of what items are needed by the club.

NEW BUSINESS: President Nye reminded everyone of the Former Glass Workers Reunion at the Museum this afternoon.

President Nye then thanked Lynn Welker for doing "Show & Tell" on Saturday afternoon.

After inadvertently overlooking it, President Nye asked for a report from the Budget and Finance committee.

BUDGET & FINANCE: Chairman David Rankin reported that last year he had given a rather negative report. Our revenues were down and our expenses were up. He stated that we did end the year losing money.

continued on page 16

MINUTES continued from page 15

Chairman Rankin then made a recommendation to the Board of Directors that they consider raising dues in the future.

President Nye stated that a Board of Directors meeting would be held immediately after the Annual meeting for the election of officers.

Judy Momirov thanked Phyllis Smith for her work on the CRYSTAL BALL.

Willard Kolb then auctioned off a banquet favor.

Phyllis Smith asked if the banquet favor could continue the same for a few years.

A motion was made by David Rankin to adjourn at 10:50 a.m. Seconded by Willard Kolb. Motion carried. Meeting adjourned.

Submitted by J.D. Hanes
Secretary

— Classified —

FOR SALE: #3400/92 carmen decanter and stopper in Farber holder \$45. #5 Cambridge Arms, 2 pieces \$40. Milk glass cordial inserts in brass Farber holders (6) \$16. Crystal epergne, 5 lite w/2 flower holders, 4 pieces \$85. Diane #3400 cheese compote \$18. Rosepoint: #3400/1240 12" ftd. oval bowl \$70; #3900/40 ind. sugar & cream \$38; keyhole 10" vase \$70; #3900/135 cheese & cracker \$85; #3900/68 candlesticks, pair \$60. Priced each and as stated. UPS Extra. Robert Taylor, 80 Middle St., Apt. 21, Gloucester, MA 01930. Phone: 508/281-4637.

FOR SALE: #3122 Diane etched: 7-1/4" goblets (11); 5" juices (12); sherbets (8); 6-1/4" underplates (5). Make offer. Barbara Jennings, 134 Garden Parkway, Henrietta, NY 14467. Phone: 716/334-5066.

WANTED: Crystal oval base flower holder. Crystal #1091 sauce boat liner. Cambridge Apple Blossom in crystal. Dana Stephens, 6224 Old Collinsville Rd., Farview Hgts., IL 62208.

WANTED: Mint condition pieces of Rock Crystal Achilles (#698), stem #3121. Send information and prices to Nancy Callis, 4 Tami Court, Bloomington, IL 61701.

WANTED: One #628 3 1/2" pink Cambridge candleholder, Etched #725 (Etching ref: 1930-34 Catalog Reprint, page 46). Please notify Mrs. N. G. Lancaster, 1600 So. Joyce St., A-1011, Arlington, VA 22202.

FOR SALE: Rose Point: P101 32 oz. cocktail shaker \$135; #3900/24 10 1/2" dinner plates (9) \$90 ea.; #498 10 oz. tumbler \$44; #498 12 oz. tumbler \$44; #3900/33 13" 3-ftd. R.E. plate \$55; #1617 Hurricane Lamps (2) \$125 each. #1314 carmen ashtray #1066 stem \$80. #3011 crystal Nude stem w/amethyst ivy ball \$225. Crown Tuscan 9" #3011 Nude candlesticks, pair \$275. UPS Extra. Shirley Ladouceur, 7597 Daphne Dr., N. Syracuse, NY. 13212. Phone: 315/458-5297.

**NEW Price Guide to
The N.C.C. COLOR BOOK**

\$2.00 EACH

National Cambridge Collectors, Inc.,
P.O. Box 416, Cambridge, OH 43725

**Tiffin Glass Collectors' Club
4th ANNUAL ANTIQUE SHOW & SALE**

**NATIONAL GUARD ARMORY
500 Riverside Drive, Tiffin, Ohio**

ADMISSION \$1.00

Saturday, September 16 - 10 am to 8 pm

Sunday, September 17 - 11 am to 5 pm

GUESTS

**Fred Bickenheuser, Author Tiffin Books
Jim Measell, Findlay & Greentown Author**

Information

Shirley (419)447-9875

GINNY (419)447-5832 * Joyce (419)435-1262

SUPPORT OUR ADVERTISERS!

Announcing Cambridge Rose Point



**Rose Point Book, N.C.C. Inc.
P.O. Box 416, Cambridge, OH 43725**

A new book from the National Cambridge Collectors

Compiled & edited by Mark A. Nye

- 96 pages,
- Lists all known items in this etched pattern.
- Informative articles.
- Reprints of original catalogs.
- Price guide included.
- \$12.95 (Plus \$1.00 Shipping & handling, \$.77 tax for Ohio residents.)

*** NOW AVAILABLE ***

Crystal Ball Binders



Top quality, clear vinyl covered, 1-1/2", 3 ring, loose leaf binders.

Printed inserts for Cover and Spine show Cambridge Glass Co. trademark and Crystal Ball title strip with indexing for binder contents.

Each binder holds approximately 20 twenty page issues.

Six binders are adequate for Issues 1 thru 188. Seventh binder needed for current and future issues.

ORDER NOW FOR IMMEDIATE DELIVERY

National Cambridge Collectors, Inc.
P. O. Box 416
Cambridge, Ohio 43725

**\$6.00 each Plus \$1.00 each Postage & Handling
(Ohio residents add \$.36 each for State Sales Tax)**

THESE COLLECTIONS ARE FOR SALE

SPoons	CAMERAS	SOUP LADLES
RELIGIOUS MEDALS	CRUCIFIXES	ANTIQUE JEWELRY
POST CARDS	SALT & PEPPERS	KEYS TOYS
LADIES COMPACTS	VICTORIAN CRYSTAL	BELLS
CIGARETTE CASES	AUTO MEMORABILIA	THIMBLES
ICE PICKS	ANTIQUE TOOLS	EYE CUPS
WRIST WATCHES	RULERS	VICTORIAN SILVER
COINS	DEPRESSION GLASS	TRAINS
SAFETY RAZORS	BADGES	LETTER OPENERS
STILL BANKS	SHAVING MUGS	MILITARY RELICS
SHOE HORNS	FOUNTAIN PENS	AVON ITEMS
MILITARY MEDALS	PEN KNIVES	FIRST DAY COVERS
PAPER MEMORABILIA	MECHANICAL PENCILS	POCKET WATCHES

CHARLES MIKULIK BOX 416 ELIZ., NJ

COLLECTORS & DEALERS WE OFFER A FINE SELECTION



OF CAMBRIDGE GLASSWARE AT COMPETITIVE PRICES

SUBSTANTIAL ROSEPOINT (PRESSED & ETCHED),
CAPRICE: COLORED, CLEAR, & ALPINE, NUDE STEMS,
CHANTILLY, WILDFLOWER & IMPERIAL HUNT ETCH
FIGURAL FLOWER FROGS, ANIMALS, CANDLESTICKS
MT. VERNON, EVERGLADES, GEORGIAN, CROWN TUSCAN,
SIMILAR SELECTIONS IN HEISEY, DUNCAN, FOSTORIA
NEW MARTINSVILLE, FENTON & OTHER ELEGANTS
CALL OR WRITE. WE'D LIKE TO KNOW YOUR "WANTS"

CLASSIQUE GLASS CO.

BOX 52572 • TULSA, OKLAHOMA 74152 • (918) 744-5409

WELCOME TO GLASS COUNTRY!

I-70

STOP AND SEE US

ROUTE 40

WE FEATURE GLASSWARE OF:
CAMBRIDGE, HEISEY, FENTON, & FOSTORIA
Plus Art Pottery & a General Line of Antiques

Stage Coach
Antique Mall

RT. 40 ONE-HALF MILE WEST OF I-70 EXIT #164
MANY DEALERS - WIDE SELECTION - PLENTY PARKING

DORIS AND ROY ISAACS
BUY AND SELL
614-872-3720



7525 EAST PIKE
NORWICH, OHIO 43767

MON THRU SAT 10-5:30 SUN 12-5:30
SUMMER EVENING HOURS BY CHANCE

SPRINGFIELD Antique Show & Flea Market

Clark County Fairgrounds

SPRINGFIELD, OH

Exit 59 on I-70

400-800 DEALERS

INSIDE AND OUTSIDE

Ohio's largest year round show with an
emphasis on quality antiques

9:00 AM - 5:00 PM

Admission \$1.00

Children under 12 FREE

NEXT SHOW

AUGUST 19 & 20, 1989

1989 SHOW DATES

SEPT	15-16 17	Extravaganza
OCT	21 22	Inside & Outside
NOV	13-19	Inside
DEC	9-10	Inside

BRUCE KNIGHT, MGR.

For Information Write
P.O. Box 2429, Springfield, OH 45501
Phone (513) 325-0053

The DAZE

***SPECIAL OFFER**
to NCC friends \$2. off
the 1 year subscription
price when on this form
or copy of.

The Original National monthly newspaper dedi-
cated to the buying, selling & collecting of colored
glassware and china including Depression Glass
and the Elegant Glass (Cambridge, Heisey, Fostoria,
etc.) We educate and inform you each month
with feature articles by top notch columnists,
readers "finds", club happenings, show news and a
multitude of ads. Find those missing pieces to your
30s, 40s or 50s pattern. Can't identify it? Perhaps
we can help "Keep up with what's happening with
a subscription to the DAZE. Buy, sell or trade from
the convenience of your easy chair.

Name _____ Street _____

City _____ State _____ Zip _____

1 yr \$17 2 yrs \$33 \$2. Single Current Copy

Exp date _____ Card No. _____

Signature _____

Orders to D.G.D., Box 57NC, Otisville, MI 48463
Please allow 30 days for your first issue - Canadian subscribers, add \$1.
per year and subscribe by charge card only! This Special Offer may not be
combined with any other special offer.

DEALERS



DIRECTORY

NOTE: When writing to the Dealers listed here, please enclose a SASE!

<p>MILBRA'S CRYSTAL MATCHING P.O. Box 363, Rio Vista, TX 76093 Milbra Long 817 / 645-8066 FOSTORIA * CAMBRIDGE * HEISEY * DEPRESSION ERA GLASSWARE BUY and SELL</p>	<p>BENICIA ANTIQUE SHOP 305 First Street Benicia, California 94510 OPEN 11 AM - 5 PM Closed Monday Z. E. LOPES 707-745-0978</p>	<p>THE MUTED SWAN ANTIQUES 5486 Peachtree Rd. Chamblee, GA 30341 Heart of Chamblee Antique Row Specializing in Cambridge, Heisey and Fostoria Bill & Pat Miller 404-451-7620</p>
<p><i>YOU CAN ADVERTISE YOUR ANTIQUE SHOP HERE!</i></p>	<p>VISIT HISTORIC BENICIA and its 28 shops Off Interstate #80 North of San Francisco</p>	<p>Elegant Depression Era Glassware ABBA ANTIQUES 1157 Charlie Lane Lilburn, GA 30247 Bill & Barbara Adt (404) 279-1942 Shows, Mail Order, & by Appointment</p>
<p>THE GLASS URN 456 West Main Street, Suite G. Mesa, AZ 85201 602 / 833-2702 Mail Order Shows Open Shop CAMBRIDGE, FOSTORIA, HEISEY, ETC.</p>	<p>ANTIQUES ON THE MALL SPECIALIZING IN CAMBRIDGE GLASS Stagecoach Mall - Bldg. 3 - Norwich, OH Virginia Bennett 614/432-4483 64183 Warne Drive, Cambridge, OH 43725</p>	<p>BERKELEY ANTIQUES 69 Berkeley St., Boston, MA 02116 OPEN: Monday thru Saturday 11 AM to 5 PM GEORGE & FRANK 617/426-1048 DUNCAN, CAMBRIDGE, HEISEY, GENERAL LINE</p>
<p>ETTELMAN'S DISCONTINUED CHINA & CRYSTAL Cambridge a Specialty P.O.Box 6491-CB Corpus Christi, TX 78466 Phone (512) 888-8391 Include S.A.S.E.</p>	<p>D & D ANTIQUES Columbus, Ohio DICK SLIFKO SHOWS ONLY</p>	<p><i>YOU CAN ADVERTISE YOUR ANTIQUE SHOP HERE!</i></p>
<p>THE GLASS CUPBOARD 39 Shire Oaks Drive Pittsford, New York 14534 Marcia Ellis Cambridge, Duncan Miller (716) 586-7596 Shows, Mail Order, Appt.</p>	<p>JUDY'S ANTIQUES Judy Bennett 422 S. Ninth Street (Corner of Jefferson) Cambridge, Ohio 43725 BUYING Ph. 614-432-5855 SELLING <i>Cambridge Glass my Specialty</i></p>	<p>"HAPPINESS IS" The Stultzs 3106 Warren Court Glen Allen, VA 23060 SHOWS & MAIL 804-872-8102 (RICHMOND AREA) AMERICAN MADE GLASS CIRCA 1890-1960.</p>
<p>"Days of Future Passed" 4 Newbrook Lane, Bayshore, L.I., NY 11706 LYNN DEZMAIN (516) 665-3890 Cambridge, Elegant Glass, D. G., Collectibles</p>	<p>GREEN ACRES FARM 2678 Hazelton Etna Rd., Pataskala, OH 43062 (State Route 310 North) Sat. & Sun. 1-7 PM 614/927-1882 Antiques, Crystal Glass and Collectibles</p>	<p>MOSTLY HEISEY & CAMBRIDGE 16 Clayton Place, Albany, NY 12209 Rhoda Curley 518 / 482-6272 SHOP and MAIL ORDER</p>
<p>THE HITCHING POST 7467 S. R. 88 Ravenna, OH 44266 Ph. 216-296-3686 D. McDaniel CAMBRIDGE — HEISEY — GENERAL LINE</p>	<p>BUY-SELL 513/390-3617 Taste of Honey Glassware—Collectibles CLARKE & CAROLE WEST 3032 Armsgate Road Springfield, OH 45503</p>	<p>CRYSTAL LADY 1819 Vinton St., Omaha, NE 68108 Joann D. Hagerty Bus. (402) 341-0643 Res. (402) 391-6730 Specializing in Elegant Glass & Collectables</p>
<p><i>YOU CAN ADVERTISE YOUR ANTIQUE SHOP HERE!</i></p>	<p>REMEMBRANCES 7597 Daphne Dr., No. Syracuse, NY 13212 Shirley S. Ladouceur 315 / 458-5297 ANTIQUES and COLLECTIBLES MAIL ORDER SHOWS APPOINTMENTS</p>	<p>MARGARET LANE ANTIQUES 2 E. Main St., New Concord, OH 43762 Lynn Welker 614/826-4418 CAMBRIDGE GLASS MATCHING SERVICE Hours Mon.-Fri. 1-5 PM or by Appointment</p>
<p>GLASS RESTORATION BRILLIANT CRYSTAL ELEGANT DEPRESSION DON & LYNNE WORMLAND MT. CLEMENS, MICH. (313) 791-9191</p>	<p>AL STEELE Westerville, Ohio 614-882-6483 or 614-882-7124 Mail Orders and Shows Only HEISEY — CAMBRIDGE — PATTERN GLASS</p>	<p>BUD'S TRADING POST GENERAL STORE — FLEA MARKET 501 Wheeling Ave. Cambridge, OH 43725 10-5 Mon. thru Sat. 614-432-4688 CAMBRIDGE- PATTERN- ART GLASS This Bud's for Y'all</p>

QUARTERLY MEETING & PICNIC

Saturday, Aug. 5 at the Museum

**Flea Market 10 - Noon Picnic Lunch Noon - 1pm
Quarterly Meeting 1 pm**

BRING A COVERED DISH, YOUR TABLE SERVICE, & CHAIRS

**August
1989**



National Cambridge Collectors, Inc.

P. O. Box 416 Cambridge, Ohio 43725

FIRST-CLASS MAIL
U.S. POSTAGE
PAID

So. Vienna, Ohio
45369
Permit No. 15

FIRST CLASS MAIL



One of the beautiful table arrangements
for the Saturday night Banquet.
(see inside for complete Convention coverage)

Membership Renewal Notice

This is your **last** issue of the *Crystal Ball*—if the date
on your address label reads **8--89**

Please renew now!