



Cambridge Crystal Ball

Published monthly by the National Cambridge Collectors, Inc.
to encourage and report the discovery of the elegant and boundless product
of the Cambridge Glass Company of Cambridge, Ohio

Issue No. 203

March 1990

From The President's Desk

Someone needs to find a means of creating more hours in a day, more days in a week, and more weeks in a month. There just is not enough time to accomplish all I have to do, should do, and want to do! This is being written just one day before it is due on Phyllis's desk, and since I am here and she is there, it obviously is going to be late. Those tasks that have to be done always seem to get done, albeit a little late on occasion, but, the optional ones, those that I want to do, tend to slip further and further behind.

The last weekend in January I was at the Sanford Florida Depression Glass Show; and the first weekend in February, at the Miami Show. Why anyone would pack used dishes into chicken boxes, tomato boxes, liquor boxes or what have you, drive hundreds of miles, unpack all these used dishes and arrange (?) them to create an urge to buy, sit there for two days listening to someone say "we use to have this" or "mine is just like this, except...", then list numerous differences, most of which you can't understand, and then ask "What is it?"; pack up all that didn't sell, drive hundreds of miles home, and enjoy, is something that is hard to believe. I can't answer the question "why," except that I find it enjoyable, a change of pace from my regular job, a chance to see old friends and meet new ones, and there is the opportunity to add to your collection. Oh yes, while basically most of what we collect is "used dishes" none of us, myself included, ever think of Cambridge, Heisey, Fostoria or Depression Glass in such a manner, except when poking fun at ourselves.

I was able to add pieces to my collection at both of these shows; the only problem is now where do I put them? There is at least ten pieces of stemware to add to the already crowded shelves and the Wedgwood edged covered candy dish may have to hunt for its own place to rest. A lack of space has never prevented me from buying one more piece of glass. That extra little bit of room always appears, sooner or later. What I first thought was a small Caprice vase may in fact be a second style covered marmalade, without its lid, since the standard lid fits perfectly. More on this later.

The March 2nd Quarterly Meeting will be highlighted by nominations for this year's election to the Board of Directors, and by presentation of additional "Committed to Cambridge" awards. Following the meeting there will be an Auction Preview and the annual All-Cambridge Glass Auction takes place the following day, March 3rd.

By the time you read this, the annual Convention will only be four months away and now is the time to be making plans to attend. As always, there will be plenty to do at the Convention, and we would like to see more of you there, especially members who have never seen our Museum.

The Museum will reopen Friday, March 2nd and remain open until after the Fall Quarterly meeting, next November. There will be new displays this year, so even if you were at the Museum last year, a visit this year is in order.

Until next time, Collect Cambridge!



Cambridge Crystal Ball

Official publication of National Cambridge Collectors, Inc., a non-profit corporation with tax exempt status. Published once a month for the benefit of its members.

Membership is available for individual members at \$15 per year and additional members (12 years of age and residing in household) at \$3 each. All members have voting rights, but only one *Crystal Ball* will be mailed per household.

Back issues of the *Crystal Ball* are available (beginning with Issue No. 1, May 1973) for members only. Cost: 60 cents each or 12 issues for \$7.

1989-90 Officers & Committee Chairpersons

President	Mark A. Nye
Vice-President	Cynthia A. Arent
Secretary	J. D. Hanes
Treasurer	William C. Smith
Sergeant-at-Arms	Marlene K. Snyder
Acquisition	Mark Nye, Lynn Welker, Bill Smith, Joy McFadden, J. D. Hanes
Budget & Finance	David B. Rankin
By-Laws	J. D. Hanes
Membership	Phyllis D. Smith
Museum—Facilities	Willard P. Kolb, Doyle Hanes
Museum—Interior	Lynn Welker, Janice Hughes, Marybelle Moorehead
Non-Glass Items	J. D. Hanes, Cindy Arent, Judy Momirov, Marlene Snyder
Nominating	Willard P. Kolb
Program	R. Clarke West
Project	William C. Smith
Public Relations	Bill & Phyllis Smith
Publicity	Cynthia A. Arent
Study Group Advisor	Phyllis D. Smith
1990 Auction	Lynn M. Welker
1990 Antique Show	Joy R. McFadden, Mary Beth Hackett
1990 Convention	Marybelle Moorehead
1990 Flea Market	Doyle C. Hanes
Crystal Ball Editor	Phyllis D. Smith

Classified Advertising Rates

10 cents per word \$2.00 minimum
We cannot mix type size in classified advertisements. Abbreviations and initials will count as words. Payment in full must accompany all ads.

Display Advertising Rates

(Camera-ready ads preferred)	Members	Non-Members
1/8 page	\$ 6.00	\$10.00
1/4 page	10.00	15.00
1/2 page	18.00	25.00
3/4 page	25.00	35.00
Full page	33.00	45.00

Dealers Directory

Five-line maximum \$18.00 for 12 months

Cambridge *Crystal Ball* assumes no responsibility for items advertised and will not be responsible for errors in price, description or other information.

Advertising copy, articles, club news and notices must be in our hands by the 10th of each month to assure publication in our next issue.

Paid advertisements containing reproductions or new glass will not knowingly be accepted for publication.

Opinions or information stated in any signed article or letter printed in the *Crystal Ball* are those of the authors and may or may not agree with National Cambridge Collectors, Inc. The Editor reserves the right to refuse and to edit any material submitted for publication so as to conform with the editorial style of the *Crystal Ball*.

Please Address All Correspondence to:

National Cambridge Collectors, Inc.
P.O. Box 416 Cambridge, Ohio 43725
President — Mark A. Nye, 305/221-0343
Secretary — J.D. Hanes, 614/432-6794
Editor — Phyllis Smith, 513/323-3888

Please notify us immediately of any change in your address.

Please enclose an SASE when requesting information.

CAMBRIDGE GLASS BOOKS FOR SALE

by National Cambridge Collectors, Inc.

* **COLORS IN CAMBRIDGE GLASS**
(128 pages - 60 color plates - fully indexed)
Hardbound with Price Guide \$19.95

* **1930-34 CAMBRIDGE GLASS CO. CATALOG REPRINT**
(250 pages - *Out of Print* catalog)
Hardbound with Price Guide \$14.95

* **1956-58 CAMBRIDGE GLASS CO. CATALOG REPRINT**
(164 page reprint of original catalog)
Paperback \$6.95

1985 COMBINED PRICE GUIDE
for 1930-34 & 1949-53 catalog reprints Postpaid \$5.75

*NCC MEMBERS ONLY: These publications are available at 10% discount

by Bill & Phyllis Smith

CAMBRIDGE GLASS 1927-1929
(66 page reprint of original catalog)
Paperback with Identification Guide \$7.95

by Cambridge Bufts Study Group

NEARCUT
(108 page reprint of 1910 Cambridge Catalog)
Paperback with Price Guide \$9.95

by Mary, Lyle and Lynn Welker

CAMBRIDGE GLASS CO.
(120 pages of reprint from 8 old catalogs)
Paperback \$6.95

CAMBRIDGE, OHIO GLASS IN COLOR II
Spiralbound \$5.95

by Harold and Judy Bennett

1903 CAMBRIDGE GLASS CO. CATALOG REPRINT
(106 page reprint of an original catalog)
Paperback \$7.50

Address your orders to:

BOOKS
National Cambridge Collectors, Inc.
P.O. Box 416
Cambridge, OH 43725

Please add \$1.00 (P & I) per order.
(Not required for Price Guide)

Ohio residents please add 6% state sales tax.

DEALER DISCOUNTS AVAILABLE - PLEASE WRITE!

NCC Museum of Cambridge Glass

The museum is located on U.S. Route 40, one-eighth mile east of I-77 near Cambridge. Hours: 10 a.m. to 4 p.m. Wednesday through Saturday, 12 noon to 4 p.m. Sunday. (March through October)
Closed: Monday & Tuesday
Easter and July 4th.



OTHER TRAVEL DISCOUNTS

by J.D. HANES

As was described in last month's CRYSTAL BALL, your Board of Directors, along with Ohio AAA, have arranged discounts for travel to this year's Convention.

To recap, travel discounts to Columbus, thru USAir, are being offered at 40% off for full coach and 5% off excursion fares. Reservations can be made by calling, toll free, 1-800-937-8687 and requesting the fares for the N.C.C. Convention. Major credit cards are accepted, or payment by check can be made at the time of ticketing.

We have also arranged for a discount with the Holiday Inn of Cambridge, for a special rate for those who wish to stay there. The rate is \$41 for single, double, triple or quad occupancy. There is a limited number of rooms available at this cost, so please make your reservations early. The number for the Holiday Inn is: 614/432-7313. Please make sure that you identify yourself as attending the N.C.C. Convention, to receive the rate.

Also, for those who will be flying into Columbus, 3-C Rent-a-Car has offered special rates for June 21st to 24th. The rates are: a mid-size car for \$22.95 per day, plus 200 free miles; or a full-size car at \$25.95 per day, plus 200 free miles. There is also an optional collision damage waiver at \$9.95 per day. Reservations for the car can be made at the same time you book your flight by calling toll free 1-800-937-8687. A credit card will be necessary to reserve a car. Upon arrival at the Columbus airport, you may use the courtesy phone to have a valet from 3-C pick you up and take you to the off airport location. Please make sure that you give your reservation number and name at the time of the call. When you drop off your car, a 3-C valet will take you to the terminal for your return flight.

We hope that this will make your travel plans easier and less costly for this year's Convention. If you have any questions, call either the toll free Ohio AAA numbers or me (J.D. Hanes) at: 614-432-6794.

Do hope to see all of you at Convention.

1990 CONVENTION

A Letter From Your Chairperson

MARYBELLE MOOREHEAD

While you are sitting at home, enjoying the Auction list included in your January issue of the CRYSTAL BALL, we are here at the NCC Museum, looking at some of the Auction glass, and hoping to get our favorite piece, come auction day. Sorry that some of you will not be able to make it to the Auction, but do hope that you have sent in a mail bid! Best wishes on getting that one special piece of glass that you want.

The Convention will be here before you know it. Helping to get the auction glass ready has reminded me to ask all of you who will be bringing glass donations, for the museum or the Friday night mini-auction (and I hope all of you will be doing this), to be sure that you put your name on each piece. It only takes you a minute and makes it so much easier to write thank you notes and keep our records straight. Also, it is much easier to make up a list and number each item, before the mini-auction begins. Please bring any of these donations to the convention office, in room 100, or give them to Janice Hughes, Lynn Welker, or J.D. Hanes.

We are planning something a little different this year that we hope everyone will enjoy. As always, we are asking those who can to bring console bowls and candlesticks, in pink and crystal, to be used on our banquet tables. We need these, in room 100 on Friday, before 2 pm, so they can be decorated and put on display by 5 pm on Friday evening. We will leave them on display until Saturday afternoon when they will be moved upstairs and put on the banquet tables. We need at least 25 console sets and we are counting on each of you to bring at least one set. I thank you, in advance, for your cooperation with this.

As you know by now, the theme for this year's convention is "Tickled Pink with Cambridge Cordials." Last month I explained what "tickled" means to me; this month I want you to know what "pink" means. The dictionary describes pink as a "pale-red" color, but when I think of "pink," I am reminded of the pretty flowers of Spring. Like the Convention, the pretty flowers of spring will be here soon. Make your plans now. I'll see you there!

BUILDING THE CAMBRIDGE FACTORY

by MARK A. NYE

During my visit to the Rakow Library at the Corning Glass Museum last fall, I began the monumental task of going through all the issues of Crockery & Glass Journal that might contain information concerning the Cambridge Glass Company. It is a slow, tedious, process that requires careful reading in order not to miss any possible news regarding Cambridge. This article is based on that research and covers the building and opening of the Cambridge Glass Company factory as told in Crockery & Glass Journal.

7/04/01 "The new plants commencing and undergoing construction in the glassware field are reported to be going forward satisfactorily. The National's new Cambridge works have the foundation in and work on the three stacks will commence this week."

7/11/01 "Their (National Glass Co.) Cambridge and Rochester building operations are progressing quite satisfactorily."

7/18/01 "The National Glass Co. brought in their second gas well at Cambridge this past week Their construction work at Cambridge is going on favorably. The foundations are all in, and Nichols & Matthews are putting in their furnaces and doing their glasshouse work. They will have three fourteen-pot furnaces."

7/25/01 "The construction of the National Glass Co.'s Cambridge plant is progressing finely, and they are now ready for and awaiting some structural iron or steel. If they are not delayed on this material their plant will be completed by the first of October."

8/15/01 "The National Glass Co.'s building projects at Cambridge, O., and Rochester, Pa., are moving along rather slowly just now, owing to a delay in delivery of structural steel."

9/05/01 " . . . Fairly good progress is reported at their new Cambridge, O., plant."

9/19/01 "The National Glass Co. have topped out their three furnaces at Cambridge, and,

their structural iron having arrived, they are rapidly pushing the construction of this important plant . . . "

10/03/01 "The National Glass Co. during the past year have been reconstructing works destroyed by fire and building a large plant at Cambridge, Ohio. All will be completed by Jan. 1 and they will then have a much larger producing capacity . . . "

10/17/01 "The National Glass Co. are now dismantling and removing the Central Glass Co.'s works at Summitville, Ind. The valuable machinery goes to Cambridge, O."

10/31/01 "Everything is reported to be moving smoothly at the National Glass Co. and . . . They incorporated their new plant as the Cambridge Glass Co., with a capital of \$500,000, presumably on the plan of having a distinct works with a capitalization covering its value. They also incorporated their gas and oil territory under the name of Guernsey Gas and Oil Co. with a capital of \$300,000. Secretary Addison Thompson, Treasurer M. L. Case, Andrew Herron, (chairman of the executive committee), H. Morris and F. L. Raymond are the incorporators. The construction of the Cambridge Plant is moving along vigorously, also the brick work of the Rochester is now going up. Both will be ready for operation by January 1."

11/07/01 "The National Glass Co. retired \$200,000 of their old . . . They expect to have their Cambridge and Rochester plants completed and ready for operations the first of the year . . . "

11/14/01 "The National Glass Co. reported business good at the numerous plants, and manufacturing moving along smoothly and efficiently. Building at Cambridge and Rochester is going along rather slowly, owing to failure in delivery of materials, and it is questionable whether they will have these plants fully ready to operate before late in January . . . "

12/12/01 "Arthur J. Bennett, who for many years has been prominent in connection with B. F. Hunt & Sons, has resigned to accept the presidency of the Cambridge Glass Co., Cambridge, O., to which office he was elected last month. Mr. Bennett will make his home in Cambridge after January 1."

12/12/01 "The Dalzell Gilmore plant at Find-
continued on next page

CAMBRIDGE FACTORY continued

lay, O., was permanently shut down the past week. The valuable machinery will be moved to Cambridge, O., where the National is completing a large new plant. This is the second factory shut down to be removed to Cambridge . . . The Central at Summitville, Ind., have been previously closed."

12/19/01 "The National Glass Co. . . . With the completion of the Rochester Tumbler and their new Cambridge Works they will have the largest tumbler capacity in the world, and plants equipped with every possible modern appliance."

02/13/02 "Business conditions at the National Glass Co. . . . Their Cambridge plant will be in operation some time during next month."

02/20/02 "Business at the National Glass Co. is reported to be fairly normal for the season . . . The extreme cold has been unfavorable to the completion of their Rochester and Cambridge plants, but all the material is now on the ground, and it is to be hoped that no further delays will be experienced."

02/27/02 "The National Glass Co.'s two important plants under construction were expected to be in operation this month sure. The Rochester works have the foundation and the steel girders for the first floor in place, with a small portion of the frame for the second story erected. Their Cambridge plant has the building erected and the majority of the machinery installed. These two plants will add eight large furnaces to the National's capacity. They are being constructed in the most approved manner and will have the best equipment extant."

03/20/02 "Arthur J. Bennett, who left New York to take the presidency of the Cambridge Glass Co., Cambridge, O., says that there is every prospect that the factory will be making glass early next month. Severe weather and the difficulty in obtaining building material retarded progress, but now everything seems to be going ahead. He says the factory is about as near perfect as can be, and with natural gas and good shipping facilities they will be able to hold their own with any of the other factories."

03/20/02 "The National Glass Co. are pushing along energetically the work on their two plants at Cambridge and Rochester."

04/10/02 "The Cambridge plant of the National Glass Co., it is now announced by the managers, will be completed and making glass on May 1. It will make general lines of glassware, tumblers, tableware, etc. It is a three furnace plant and one of the most complete extant."

04/27/02 "Thos. G. Edge, who will handle in this market the product of the Cambridge Glass Co., has just received their catalogue. It contains 140 pages of cuts, which include about everything that is made in table glass. It is expected that in another week the factory will be turning out glass."

05/08/02 "The Cambridge Glass Works, a model three furnace plant with every modern improvement, commenced making glass this week."

05/22/02 "Thos. G. Edge has received his first lot of samples from the Cambridge (Ohio) Glass Co. The ware is very good, and for a first output from a new factory is far above the average of glass from a new factory. When everything is in smooth working order they will hold their own with any of the factories."

09/04/02 "A new Canton Glass Co. has been organized and will build a plant at Marion, Ind., with a capital of \$75,000. The old Canton Glass Works, of the National, was abandoned and its valuable machinery removed to the Cambridge (O.) glass factory . . . "

09/11/02 "Thos. G. Edge has just received an entire new line of glass from the Cambridge Glass Co. in both crystal and decorated. It is a good line at a medium price. He has also a cheap line in a double diamond pattern which is very effective. It is a double pattern by reason of the outside or large diamond being made up of small diamond figures. There is a new line of all glass lamps, decorated, and many pieces of table and bar glass, the latter making the bar line now complete."

10/09/02 " . . . The Cambridge has three fifteen-pot furnaces and is operated on druggists' glassware, lines formerly made by the dismantled Canton Glass Works -- and in addition pressed and blown tableware and specialties . . . "

Next: The First Years of Production.

we get letters

Have just received the February CRYSTAL BALL and we must say thanks to you for the splendid article by Mr. C. Ingersoll on the evolution of the Cambridge swan molds.

We are quite new at the art of Cambridge collecting and as all beginners, we need all of the documentation that we can find on proper identification of Cambridge pieces. We would like to say to our customers that -- YES, this piece is Cambridge. This is particularly true of items that may have gone the "replica" route.

Have there been any descriptive articles such as this done in the past on the Flower Holder Figures (such as the Draped Lady and Bashful Charlotte)?

We would be most appreciative of any information from anyone.

Sincerely, Anne and Dick Kinsell, Indiana

Dear Anne and Dick,

Thank you for your nice letter. I feel sure Clyde Ingersoll will be very pleased to read your words of appreciation. He worked many months researching and writing his most informative article. It's nice to hear that it was well received. Perhaps he will write another one of these days.

In answer to your question concerning Figure Flower Holders, I am happy to inform you that we have had several articles on this subject. I am listing these issues below. As you know, all back issues of the CRYSTAL BALL are available to our members at a cost of \$7 for 12 and 60¢ for single copies (less than 12). Please feel free to order any or all of these back issues.

Phyllis Smith, Editor

Issue #17 base types & Rose Lady; #19 Bashful Charlotte; #20 #2899 flower block; #21 Draped Lady; #22 self-arranging block; #23 #1500 series blocks; #33 vase insert; #34 Eagle & Cockatoo; #35, #98 & #101 Turtle; #38 Mandolin Lady; #40 Geisha; #41 Heron; #60 article w/photos; #146 updated color chart; and #145 & #170 info on reissues.

Study Club News

STUDY GROUP #13 - SOUTH WEST OHIO "MIAMI VALLEY, OHIO"

The Miami Valley Study Group held their meeting January 9th at the Huber Heights Library. There were ten members present.

Our business meeting included discussion of future programs and money making projects. It was decided to repeat last year's fund raiser, of chancing off Cambridge items, on both Thursday and Friday evenings during Convention.

Our program was on Cambridge cordials. There were forty-one cordials on display and they created a lot of informative discussion.

"Show & Tell" included: two Mt. Vernon items, a crystal jelly and a heatherbloom juice; a Doulton jug, salad plate and #3600 stem, all etched Chantilly; #3400 cream & sugar in royal blue; #3400 cup & saucer E/742; a Decagon saucer & Round cup, both in pink; and a crystal Draped Lady figure lamp.

submitted by Vicki Wollenhaupt

STUDY GROUP #14 - CAMBRIDGE, OHIO "THE CAMBRIDGE CORDIALS"

Contact person - Judy Momirov
Phone: (614) 432-2897

The Cambridge Cordials held their meeting January 20th at the N.C.C. Museum. There were eight members present.

Our main topic of discussion was a donation to the Museum. This will be given at the Convention. Ideas were discussed for a fund raising project.

Items on display for "Show & Tell" were: #1468 shakers w/ebony base and unknown cutting; SS33 4" green ash tray w/Charleton

continued on page 15

The following eight pages are reprinted from the 1906 Cambridge Glass Company catalog. These pages represent the entire "Radium" #2626 Line in production at that time.

Radium.

No 2626.

SCALE, HALF SIZE.



Berry Sugar.
Packed 14 dozen in a barrel.



Berry Cream.
Packed 17 dozen in a barrel.



Sugar and Cover.
Packed 6 $\frac{1}{4}$ dozen in a barrel.



Spoon.
Packed 9 dozen in a barrel.

Sets pack 1 $\frac{1}{4}$ dozen in a barrel.



Cream, Stuck Handle.
Packed 8 dozen in a barrel.



Butter and Cover.
Packed 4 $\frac{1}{4}$ dozen in a barrel.

Radium.

No. 2626.

SCALE, HALF SIZE.



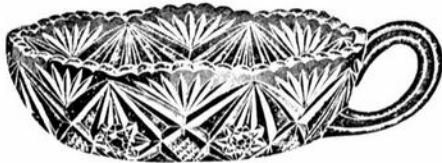
4 inch Nappy, A Shape.
Packed 25 dozen in a barrel.
Original package is 12 dozen.



7 inch Nappy, A Shape.
Packed 4¼ dozen in a barrel.



4¼ inch Nappy, A Shape.
Packed 20 dozen in a barrel.
Original package is 12 dozen.



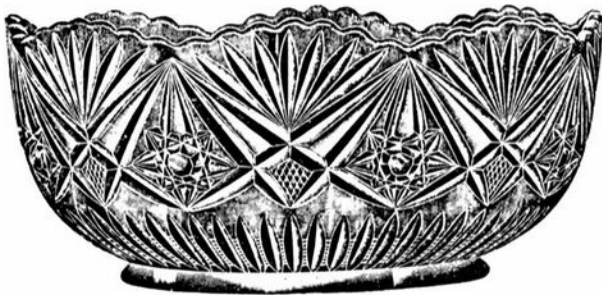
5 inch Handled Olive.
Packed 13 dozen in a barrel.



6 inch Bowl, A Shape.
Also made in 7 inch and 8 inch.
A Shape, 8 inch packed 1¾ dozen in a barrel.
A Shape, 7 inch packed 1¾ dozen in a barrel.
A Shape, 6 inch packed 2¼ dozen in a barrel.



5 inch Ice Saucer.
Packed 28 dozen in a barrel.



8 inch Nappy, A Shape.
Packed 4 dozen in a barrel



Pickle Jar and Cover.
Packed 10½ dozen in a barrel.
Condensed Milk Jar same as Pickle Jar,
with Tin inside cover.



7¾ inch Pickle.
Packed 11 dozen in a barrel.



10 inch Oval.
Packed 5 dozen in a barrel.
8 inch.
Packed 8¾ dozen in a barrel.

Radium.

No. 2626.

SCALE, HALF SIZE.



6 inch Nappy, B Shape.
Packed 5¼ dozen in a barrel.



7 inch Nappy, B Shape.
Packed 4 dozen in a barrel.



Toothpick, B Shape.
Packed 36 dozen in a barrel.
Original package is 12 dozen.



Toothpick, A Shape.
Packed 36 dozen in a barrel.
Original package is 12 dozen.



8 inch Bowl, B Shape. Also made in 7 inch and 6 inch.
B Shape, 8 inch, packed 1¼ dozen in a barrel.
B Shape, 7 inch, packed 1¼ dozen in a barrel.
B Shape, 6 inch, packed 2 dozen in a barrel.



Toothpick, C Shape.
Packed 36 dozen in a barrel.
Original package is 12 dozen.



Salt or Pepper, B Shape.
Packed 36 dozen in a barrel.
Original package is 12 dozen.



Salt and Pepper, A Shape.
Packed 36 dozen in a barrel.
Original Package is 12 dozen.



Oil, D. S.
Packed 12 dozen in a barrel.



8 inch Nappy, B Shape.
Packed 3 dozen in a barrel.

Radium.

No. 2626.

SCALE, HALF SIZE.



6 inch Nappy, C Shape.
Packed 9 dozen in a barrel.



7 inch Nappy, C Shape.
Packed 5¼ dozen in a barrel.



6 inch Bowl, C Shape. Also made in 7 inch and 8 inch.
C Shape, 8 inch packed 1¼ dozen in a barrel.
C Shape, 7 inch packed 1¾ dozen in a barrel.
C Shape, 6 inch packed 2¼ dozen in a barrel.



4 inch Nappy, C Shape.
Packed 30 dozen in a barrel.
Original Package is 12 dozen.



4½ inch Nappy, C Shape.
Packed 20 dozen in a barrel.
Original Package is 12 dozen.



8 inch Nappy, C Shape.
Packed 3¾ dozen in a barrel



Tall Celery.
Packed 5 dozen in a barrel.

Radium.

No. 2626.

SCALE, HALF SIZE.



6 inch Nappy, E Shape.
Packed 8 dozen in a barrel.



7 inch Nappy, E Shape.
Packed 5 dozen in a barrel.



7 inch Bowl, E Shape.
Also made in 8 inch and 6 inch.
E Shape, 8 inch packed 1½ dozen in a barrel.
E Shape, 7 inch packed 1½ dozen in a barrel.
E Shape, 6 inch packed 2¼ dozen in a barrel.



Double Handled Sugar.
Packed 5¼ dozen in a barrel.



8 inch Nappy, E Shape.
Packed 3¼ dozen in a barrel.



9 inch Salver.
Also made in 10 inch.
9 inch packed 2 dozen in barrel.
10 inch packed 1½ dozen in a barrel.

Radium.

No. 2626.

SCALE, HALF SIZE.



8 inch Nappy, D Shape.
Packed 4 dozen in a barrel.



Wine.
Packed 40 dozen in a barrel.
Original package is 12 dozen.



Cordial.
Packed 100 dozen in a barrel.
Original package is 12 dozen.



7 inch Nappy, D Shape.
Packed 6 $\frac{1}{4}$ dozen in a barrel.
6 inch packed 8 $\frac{1}{4}$ dozen in a barrel.



Goblet, Straight.
Packed 9 $\frac{1}{4}$ dozen in a barrel.



8 inch Cabaret, A Shape.
Packed 8 dozen in a barrel.



Goblet, Cupped.
Packed 9 $\frac{1}{4}$ dozen in a barrel.



9 inch Cabaret A Shape.
Packed 5 dozen in a barrel.

Radium.

No. 2626.

SCALE, HALF SIZE.



Water Bottle.
Packed 3 dozen in a barrel.



Half Gallon Jug.
Packed 2 dozen in a barrel.



Half Gallon Jug, Pressed Handle.
Packed 2 dozen in a barrel.



Half Gallon Tankard.
Packed 2½ dozen in a barrel.

Radium.

No. 2626.

SCALE, HALF SIZE.



Tumbler.
Packed 18 dozen in a barrel



Custard.
Packed 30 dozen in a barrel.



14 inch Punch Bowl on Foot.
Packed 5-12 dozen in a barrel.

ROBERT W. RILEY

P.O. Box 4180, Springfield, MA 01101
 Phone: 413/737-0884
 8 - 11 PM EST

Postage & Insurance Extra!

MOONLIGHT BLUE

Draped Lady, 8½".....	\$ 225
#151 Caprice 5" 2-hdld. jelly...	22
#136 Caprice 7" tall comport....	80
#70 Caprice 7" sticks w/prisms..	75

CRYSTAL

#1307 candelabrum.....	\$ 25
P92 26 oz. decanter w/#321 (11)	
1½ oz. whiskey RC/Lattice	
no stopper - set.....	150
#531 7" tall comport RC/Manor...	15
#3500/47 5" bon bon E/Rosepoint	
w/gold trim.....	35
#3122 9 oz. ftd. tumblers	
E/Diane (4) set.....	55
#3122 9 oz. goblets E/Diane	
(4) set.....	60
#3122 7 oz. tall sherbets	
E/Diane (4) set.....	55
#3122 2½ oz. wine E/Diane	
(3) set.....	80
#3122 3 oz. cocktail E/Diane	
(3) set.....	65

MISCELLANEOUS

#300 Caprice 1 oz. cordial,	
pistachio.....	\$ 100
#1506/4 5" novelty basket,	
pistachio.....	35
#3500/26 fruit basket w/6" Rams	
Head sticks, pink - set.....	250
Rams Head 9" bowl w/Doric	
sticks, jade - set.....	175
Swan, 6½" style III, emerald....	100
#1297 11" vase, amber E/Gloria..	100
#1200 Decagon 10" club luncheon	
plates, gold krystal (5) set.	45

STUDY CLUB NEWS . . continued from page 6

decoration; #797 flip vase in ebony w/gold encrusted Blossom Time etch; 3-ftd. bowl base in azurite; #3121 candlesticks w/bobeche & prisms; #1242 vase, royal blue w/sterling Chintz etch; and a large blown plate, etched Rosepoint.

submitted by J. D. Hanes

In Memoriam

RAY PANKOW
 Willow Springs, Illinois

Word has been received that we have lost yet another of our glass collecting friends. Ray Pankow passed away on February 4th, after having been ill for quite some time.

He and his dear wife Nadine are well known in the glass collecting world, and have been dealers in our Antique Shows.

Our deepest sympathy is extended to Nadine, their family and many friends.

MARK YOUR CALENDAR

QUARTERLY MEETING & AUCTION

Meeting - Friday, March 2nd - 8 p.m.
 Auction - Saturday, March 3rd - 10 a.m.
 Preview - 9 a.m.

CONVENTION and ANTIQUE SHOW & SALE
 June 21 - 24, 1990

All Events Held At
 SHENANDOAH INN - Old Washington, Ohio

March Madness

It's not too early to start planning what you're going to do wrong with your garden this year.

Bill Vaughan in *Kansas City Star*

How about that? The funny-looking snowman in our yard turned out to be the charcoal grill.

Changing Times, The Kiplinger Magazine

Sometimes March comes in like a lion with a sheepish grin on its face.

- Gerry Wallace, WIBW, Topeka



THESE COLLECTIONS ARE FOR SALE

SPOONS	CAMERAS	SOUP LADLES
RELIGIOUS MEDALS	CRUCIFIXES	ANTIQUE JEWELRY
POST CARDS	SALT & PEPPERS	KEYS.....TOYS
LADIES COMPACTS	VICTORIAN CRYSTAL	BELLS
CIGARETTE CASES	AUTO MEMORABILIA	THIMBLES
ICE PICKS	ANTIQUE TOOLS	EYE CUPS
WRIST WATCHES	RULERS	VICTORIAN SILVER
COINS	DEPRESSION GLASS	TRAINS
SAFETY RAZORS	BADGES	LETTER OPENERS
STILL BANKS	SHAVING MUGS	MILITARY RELICS
SHOE HORNS	FOUNTAIN PENS	AVON ITEMS
MILITARY MEDALS	PEN KNIVES	FIRST DAY COVERS
PAPER MEMORABILIA	MECHANICAL PENCILS	POCKET WATCHES

CHARLES MIKULIK BOX 416 ELIZ., NJ

Cambridge FLOWER FROG Collection of
MURRAY & ELAINE SCHNEIDER

2982 Cheryl Rd., Merrick NY 11566
(516) 868-3154

48 Flower Frogs
plus 5 assorted Cambridge pieces
to be sold ONLY as a collection.
Call or send for a list.
BEST OFFER WILL BE ACCEPTED

L. A. MANESS

RT. 1, BOX 552, ASHLAND, VA 23005
(804) 798-1825

C = MARKED P & I \$3 CTN.

3400/48 13" 4-ftd. shallow bowl w/crimped edge	\$ 25
Decagon 8-3/8" plate, willow blue (6) C each	10
Decagon cup, willow blue (6) C ea.	10
Decagon saucer, willow blue (6) C each	5
Decagon center handled sandwich server, amethyst	40
#3900/22 8" plates, E Diane (6) each	10
Pristine A.D. cup C/saucer w/E725, green (6) each set	18
Round 9 1/2" plate w/E520, green (6) C each	18
#3900/120 Carnation 12" 5-part celery/relish	45

VISA/MASTERCARD WELCOME

— Classified —

FOR SALE: #3122 Diane etched: 7-1/4" gob-
lets (11); 5" juices (12); sherbets (8); 6-1/4"
underplates (5). Make offer. Barbara Jennings,
134 Garden Parkway, Henrietta, NY 14467.
Phone: 716/334-5066.

FOR SALE: "Farber Brothers Krome-Kraft a
Guide for Collectors" by Sferrazza - \$16.95
ppd. 1941 Farber Brothers Catalog Reprint w/
free price guide - \$10.95 ppd. Both books -
\$25.00 ppd. Ben's Books, P.O. Box 5301, North
Branch, NJ 08876. NJ residents add sales tax.

FOR SALE: Ebony Decagon #1090 7" compute
\$35. Rosepoint: #3400/160 12" bowl \$65;
#3400/38 (2) 12 oz. tumblers \$37; #3900/111
4-piece mayo set \$70. Priced each and as
stated. UPS Extra. Robert Taylor, 80 Middle
Street, Apt. 21, Gloucester, MA 01930. Phone:
508/281-4637.

FOR SALE: Gadroon pattern, 2-hdl. #3500/55
6" square crystal candy dish. Gold Edge. Ex-
cellent condition. Make Offer. Frances D.
Locke, 6836 Hyde Park Drive, #H, San Diego,
CA 92119. UPS and Insurance extra.

FOR SALE: (1) #1401 crystal Jefferson tall
sherbet, etched Old Fashioned Grape. (6)
#1066 goblets, crystal stem and foot, royal
blue bowl. Make offer. Mary Ann Williams,
3110 - 19th Ave., #118, Forest Grove, OR
97116. UPS and Insurance Extra. 305/329-9250

ADDITIONAL BOOK on CAMBRIDGE GLASS
(not listed in ad on page 2)

CAMBRIDGE ROSE POINT
compiled & edited by Mark A. Nye

\$12.95 - includes price guide
(add \$1 S&H 78¢ tax for Ohio residents)

ATTENTION --- NEW MUSEUM HOURS

Wednesday thru Saturday - 10 AM to 4 PM
Sunday - 12 noon to 4 PM
Closed Monday & Tuesday - Easter & July 4th



P. O. Box 52572, Tulsa, OH 74152
 Phone: (918) 744-5409

ROSEPOINT ETCH - #3121 STEM

Goblet (6).....\$ 32.00
 Champagne (12)..... 29.00
 Ice Tea (6)..... 31.00
 Cocktail (4)..... 27.00
 Juice, 5 oz (12)..... 33.00
 Sherbet (4)..... 22.00
 Wine, small (12)..... 53.00
 Cordial (4)..... 95.00

ROSEPOINT ETCH - #3500 STEM

Relish, 15" 4-compt., hld....\$165.00

ROSEPOINT ETCH - #3900 STEM

Torte Plate, 13".....\$ 88.00
 Cup (8)..... 28.00
 Ball Jug, 80 oz..... 200.00
 Plate, 8" (10)..... 22.00

ROSEPOINT ETCH - #3400 STEM

Dinner Plate (8).....\$110.00
 Plate, 8" (3)..... 22.00

ROSEPOINT ETCH - #968 STEM

Seafood Cocktail Icer
 2 piece (12).....\$ 85.00

WILDFLOWER ETCH - #3121 STEM

Goblet (6).....\$ 27.00
 Champagne (9)..... 22.00
 Wine (11)..... 44.00
 Plate, #3900 8" (4)..... 9.00

CHANTILLY ETCH - PLEASE CALL/WRITE

CAPRICE

Relish, #122 8" 3-compt., blue..\$ 39.00
 Relish, #124 8" 3-compt., blue.. 39.00
 Bowl, #66 13" crimped, 4-ftd.,
 blue..... 85.00
 Dinner Plate, crystal (6).....\$ 32.00

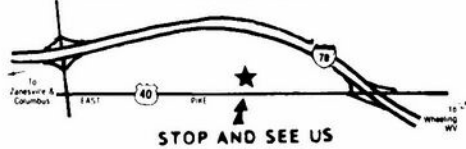
ADVANCED COLLECTORS: HEATHERBLOOM

Martha Washington 11" footed,
 covered candy.....\$165.00

MINT - PRICED EACH, EXCEPT NOTED
 UPS EXTRA

*Stage Coach
 Antique Mall*

WELCOME TO GLASS COUNTRY!



RT. 40 ONE-HALF MILE WEST OF I-70 EXIT #164
 MANY DEALERS - WIDE SELECTION - PLENTY PARKING

WE FEATURE GLASSWARE OF:
 CAMBRIDGE, HEISEY, FENTON, & FOSTORIA
 Plus Art Pottery & a General line of Antiques

DORIS AND ROY ISAACS
 BUY AND SELL
 614-872-3720



7525 EAST PIKE
 NORWICH, OHIO 43767

MON THRU SAT 10-5:30 SUN 12-5:30
 SUMMER EVENING HOURS BY CHANCE

SPRINGFIELD

Antique Show & Flea Market

Clark County Fairgrounds

SPRINGFIELD, OH

Exit 59 on I-70
400-800 DEALERS

INSIDE AND OUTSIDE

Ohio's largest year round show with an emphasis on quality antiques

9:00 AM - 5:00 PM

Admission \$1.00

Children under 12 FREE

NEXT SHOW

MARCH 17 & 18, 1990

1990 SHOW DATES

APRIL	21-22	Inside & Outside
MAY	18-19-20	Extravaganza
JUNE	16-17	Inside & Outside
AUGUST	18-19	Inside & Outside

BRUCE KNIGHT, MGR.

For Information Write
P.O. Box 2429, Springfield, OH 45501
Phone (513) 325-0053

The DAZE

***SPECIAL OFFER**
to NCC friends \$2. off
the 1 year subscription
price when on this form
or copy of.

The Original National monthly newspaper dedicated to the buying, selling & collecting of colored glassware and china including Depression Glass and the Elegant Glass (Cambridge, Heisey, Fostoria, etc.) We educate and inform you each month with feature articles by top notch columnists, readers "finds", club happenings, show news and a multitude of ads. Find those missing pieces to your 30s, 40s or 50s pattern. Can't identify it? Perhaps we can help "Keep up with what's happening with a subscription to the DAZE. Buy, sell or trade from the convenience of your easy chair.

Name _____ Street _____

City _____ State _____ Zip _____

1 yr \$17 2 yrs \$33 \$2. Single Current Copy

Exp date _____ Card No. _____

Signature _____

Orders to D.G.D., Box 57NC, Otisville, MI 48463

Please allow 30 days for your first issue - Canadian subscribers, add \$1. per year and subscribe by charge card only! This Special Offer may not be combined with any other special offer.

27th METROPLEX GLASS SHOW AND SALE

Depression Glass - Adam to Windsor: Cambridge, Fostoria, Heisey, Imperial, etc. Kitchen Collectibles and Pottery

March 10th and 11th, 1990 Saturday 10:00 am - 6:00 pm
Sunday 11:00 am - 4:00 pm

SPECIAL GUEST: *Teri Steele, Editor of The Daze*
Mark Nye, National Cambridge
Collectors Club, President

ARLINGTON CONVENTION CENTER
1200 Stadium Drive East
(Between Six Flags and Ranger Stadium)

1-30 E. Pennant Drive Exit

1-30 W. Hiway 157 Exit

Admission \$2.50
Good Both Days
Door Prizes

Metroplex Glass Show
3816 Hastings Drive
Arlington, TX 76013
817-275-6342

SPECIAL DISPLAYS

28 Quality Dealers from Florida, Illinois, Indiana, Kansas,
Kentucky, Louisiana, Missouri, Oklahoma and Texas.

DEALERS



DIRECTORY

NOTE: When writing to the Dealers listed here, please enclose a SASE!

<p>MILBRA'S CRYSTAL MATCHING P.O. Box 363, Rio Vista, TX 76093 Milbra Long 817 / 645-8066 FOSTORIA * CAMBRIDGE * HEISEY * DEPRESSION ERA GLASSWARE BUY and SELL</p>	<p>BENICIA ANTIQUE SHOP 305 First Street Benicia, California 94510 OPEN 11 AM - 5 PM Closed Monday Z. E. LOPES 707-745-0978</p>	<p>THE MUTED SWAN ANTIQUES 5486 Peachtree Rd. Chamblee, GA 30341 Heart of Chamblee Antique Row Specializing in Cambridge, Heisey and Fostoria Bill & Pat Miller 404-451-7620</p>
<p><i>YOU CAN ADVERTISE YOUR ANTIQUE SHOP HERE!</i></p>	<p>VISIT HISTORIC BENICIA and its 28 shops Off Interstate #80 North of San Francisco</p>	<p>Elegant Depression Era Glassware ABBA ANTIQUES 1157 Charlie Lane Lilburn, GA 30247 Bill & Barbara Adt (404) 279-1942 Shows, Mail Order, & by Appointment</p>
<p>THE GLASS URN 456 West Main Street, Suite G. Mesa, AZ 85201 602 / 833-2702 Mail Order Shows Open Shop CAMBRIDGE, FOSTORIA, HEISEY, ETC.</p>	<p>ANTIQUES ON THE MALL SPECIALIZING IN CAMBRIDGE GLASS Stagecoach Mall - Bldg. 3 - Norwich, OH Virginia Bennett 614/432-4483 64183 Warne Drive, Cambridge, OH 43725</p>	<p>BERKELEY ANTIQUES 69 Berkeley St., Boston, MA 02116 OPEN: Monday thru Saturday 11 AM to 5 PM GEORGE & FRANK 617/426-1048 DUNCAN, CAMBRIDGE, HEISEY, GENERAL LINE</p>
<p>ETTELMAN'S DISCONTINUED CHINA & CRYSTAL Cambridge a Specialty P.O.Box 6491-CB Corpus Christi, TX 78466 Phone (512) 888-8391 Include S.A.S.E.</p>	<p>D & D ANTIQUES Columbus, Ohio DICK SLIFKO SHOWS ONLY</p>	<p><i>YOU CAN ADVERTISE YOUR ANTIQUE SHOP HERE!</i></p>
<p>THE GLASS CUPBOARD 39 Shire Oaks Drive Pittsford, New York 14534 Marcia Ellis Cambridge, Duncan Miller (716) 586-7596 Shows, Mail Order, Appt.</p>	<p>JUDY'S ANTIQUES Judy Bennett 422 S. Ninth Street (Corner of Jefferson) Cambridge, Ohio 43725 BUYING Ph. 614-432-5855 SELLING <i>Cambridge Glass my Specialty</i></p>	<p>"HAPPINESS IS" The Stultzs 3106 Warren Court Glen Allen, VA 23060 SHOWS & MAIL 804-672-8102 (RICHMOND AREA) AMERICAN MADE GLASS CIRCA 1890-1960.</p>
<p>"Days of Future Passed" 4 Newbrook Lane, Bayshore, L.I., NY 11706 LYNN DEZMAIN (516) 665-3890 Cambridge, Elegant Glass, D. G., Collectibles</p>	<p>GREEN ACRES FARM 2678 Hazelton Etna Rd., Pataskala, OH 43062 (State Route 310 North) Sat. & Sun. 1-7 PM 614/927-1882 Antiques, Crystal Glass and Collectibles</p>	<p>COSHOCTON ANTIQUE CENTER 309 South 4th Street Coshocton, Ohio 25+ Dealers - Open 10 - 6 (Closed Mon. Winter) Glass Restoration & Chair Caning 614 622-3223</p>
<p>THE HITCHING POST 7467 S. R. 88 Ravenna, OH 44266 Ph. 216-296-3686 D. McDaniel CAMBRIDGE — HEISEY — GENERAL LINE</p>	<p>PATCHES OF VIRGINIA THE ANTIQUES LOFT 205 Main St. Chardon, OH 44024 Virginia T. Houston Home (216)975-8315 Bus.(216)285-3764</p>	<p>CRYSTAL LADY 1819 Vinton St., Omaha, NE 68108 Joann D. Hagerty Bus. (402)341-0643 Res. (402)391-6730 Specializing in Elegant Glass & Collectables</p>
<p>JOHN C. WOLFE, JR. Visual Display, Suite S 592 E. Main St., Columbus, OH 43215 CAMBRIDGE, A SPECIALTY VINTAGE WRISTWATCHES</p>	<p>REMEMBRANCES 7597 Daphne Dr., No. Syracuse, NY 13212 Shirley S. Ladouceur 315 / 458-5297 ANTIQUES and COLLECTIBLES MAIL ORDER SHOWS APPOINTMENTS</p>	<p>MARGARET LANE ANTIQUES 2 E. Main St., New Concord, OH 43762 Lynn Welker 614/826-4418 CAMBRIDGE GLASS MATCHING SERVICE Hours Mon.-Fri. 1-5 PM or by Appointment</p>
<p>GLASS RESTORATION BRILLIANT CRYSTAL ELEGANT DEPRESSION DON & LYNNE WORMLAND MT. CLEMENS, MICH. (313) 791-9191</p>	<p><i>YOU CAN ADVERTISE YOUR ANTIQUE SHOP HERE!</i></p>	<p>BUD'S TRADING POST GENERAL STORE — FLEA MARKET 501 Wheeling Ave. Cambridge, OH 43725 10-5 Mon. thru Sat. 614-432-4688 CAMBRIDGE - PATTERN - ART GLASS This Bud's for Y'all</p>



National Cambridge Collectors, Inc.

P O Box 416, Cambridge, Ohio 43725

A nonprofit organization dedicated to the preservation and study of Cambridge Glass

You Are Cordially Invited
To Become A Member Of The
NATIONAL CAMBRIDGE COLLECTORS, INC

Benefits derived from membership include receipt of our club publication The Cambridge CRYSTAL BALL, informative Quarterly Meetings, Antique Shows Auctions, and other special events.

The Cambridge CRYSTAL BALL is published the first of each month. This newsletter contains educational and interesting articles, questions and answers, information on reproductions and reissues, notices of all club functions, classified advertisements, dealers directory, and many other features of interest to collectors of Cambridge Glass.

Yearly dues are \$15.00 for Individual Members and \$3.00 for each Associate Member. All members have voting rights, but only one issue of the CRYSTAL BALL will be mailed per household.

Name (please print) _____ \$15.00

Mailing Address _____

City _____ State _____ Zip _____

Associate Members (Must be at least 12 years of age and living in the same household)

1 Name _____

2 Name _____

3 Name _____

Total number of Associate Members _____ @ \$3.00 each _____ \$ _____

TOTAL AMOUNT ENCLOSED \$ _____

Please make check payable to NATIONAL CAMBRIDGE COLLECTORS, INC

Recommended by _____

Give a gift they'll appreciate all through the year.

VISIT YOUR MUSEUM of CAMBRIDGE GLASS

ATTENTION --- NEW MUSEUM HOURS

Wednesday thru Saturday - 10 AM to 4 PM
Sunday - 12 noon to 4 PM
Closed Monday & Tuesday - Easter & July 4th



MARCH 1990

Flower — Jonquil • Birthstone — Aquamarine



National Cambridge Collectors, Inc.
P. O. Box 416 Cambridge, Ohio 43726

FIRST CLASS MAIL
U S POSTAGE
PAID
So Vienna, Ohio
45369
Permit No 15

Membership Renewal Notice

This is your **last** issue of the *Crystal Ball*—if the date on your address label reads 3-90.

Please renew now!

1 9 9 0

NATIONAL CAMBRIDGE COLLECTORS, Inc.
AUCTION INFORMATION

AUCTIONEER: CRAIG CONNELLY

ADMISSION: \$ 1.00

LOCATION: Shenandoah Inn
Intersection 1-70 & Route 285
Old Washington, Ohio (6 miles East of Cambridge)

TIME: March 3, 1990

PREVIEW: 9:00 AM

AUCTION: 10:00 AM

All glass guaranteed to be Cambridge. The Auction committee has checked all glass to be auctioned. All pieces should be examined immediately and returned before five items are sold if the article is not as represented. Any damage is indicated in this Catalog. If no color is indicated, the item is Crystal.

TERMS: Cash or check with proper identification, day of sale. All Sales are subject to 6% Ohio sales tax. Dealers may sign an exemption form if the items purchased are for resale, in which case, no tax will be charged.

CATALOG INSTRUCTIONS: Number references may be found in the National Cambridge Collectors publications or Welker reprints. The number in parenthesis () at the end of each listing indicates the amount of items to be sold. Bidding will be by the piece if a number occurs at the end or as a lot if pair, set, or lot is indicated. You may buy any number of an item if a number appears at the end of an item description.

MAIL BIDS: All bids must be accompanied by a check for each lot. Bids will be executed secretly, and the bidder will pay only the final auction price. Please include a stamped, self-addressed envelope with bids. You will be notified if you are not the successful bidder, and your check(s) will be returned, and the final selling price will be noted. Ohio residents, please include 6% sales tax or your Vendor's number. If you wish to have the pieces shipped to you, please include a separate check for adequate postage. All pieces will be shipped via UPS the week immediately following the auction. Please include your UPS delivery address (not a P.O. Box). All items are sold in perfect condition unless noted, and you may expect to receive them that way if you mail bid. All items will be carefully checked again before they are shipped. For additional information, phone: (614) 826-7414.

Bids must be received by March 2nd to be eligible. Mail bids to: Lynn Welker, 2 E. Main Street, New Concord, OH 43762. ~~Make~~ checks payable to: **National Cambridge Collectors, Inc.**

Motel Reservations: Phone: (614) 489-5511. Mention N.C.C., Inc., for reasonable rates. Food available on the premises.

QUARTERLY MEETING: Friday, March 2nd at 8:00 PM. An informative meeting will be presented as well as a Preview of the auction glass. Bring a friend and your "Show & Tell" glass to the meeting.

Additional Auction Catalogs: \$ 1.00 postpaid or at the door.

1. #278 Crown Tuscan 11" belled footed vase
2. Primrose 10" (across) high stem comport
3. #3500 Crystal 10" handled bowl, curved up sides
4. #3126 Amber 9 oz. goblets (2)
5. #3400/38 Amber 12 oz. (balltop) tumblers (5)
6. #47 Primrose 6³/₄" low ftd. mayo comport
7. #3500/74 Ram's Head 4" candlesticks (pr)
8. #102 Azurite 6" bonbon & cover (tiny nick inside lid)
9. #509 Amber 8³/₄" Two Kid flower figure frog, mint
10. #3123 Gold Krystol Aero Optic 9 oz. goblets (6)
11. #559 Gold Krystol Aero Optic 8¹/₂" plates, sgd (7)
12. #3400/90 Carmen 6¹/₂" 2 part relish, sgd (Amberina shading)
13. #3500/71 Royal Blue 7¹/₂" center hdd 3 part relish
14. #3400/1186 Gold Krystol 12¹/₂" sandwich plate, sgd, scratched
15. #3500/57 Amber 8" 3 part candy box & cover (chip on divider)
16. #3058 Amber Imperial Hunt Scene 6 oz. sherbets (1 chip) (3)
17. #34 Crown Tuscan 3" ftd. shells (1 Charleton roses) (2)
18. #1042/67 Tally-Ho 6¹/₂" tall comport
19. #7966 Low ftd. waters, gold Woodlily decor (2)
20. #3400/96 Optic 2 oz. oil & stopper, (roughness on lip)
21. #3400/28 Forest Green 7" comport, Crystal keyhole stem & foot
22. #3400/91 8" 3 part relish, rock crystal cut #615, sgd.
23. #31 Heatherbloom Mt. Vernon 4" fruit saucer & #19 underplate (set)
24. Regency/Stradivarius 10 oz. goblets (9)
25. #1402 Carmen Tally-Ho ftd. punch cups (3)
26. #319 Crystal 12 oz. Georgian tumbler
27. #319 Royal Blue 12 oz. Georgian tumbler
28. #319 Amethyst 9 oz. Georgian tumbler
29. Amber 9 oz. Georgian tumblers (2)
30. Mandarin Gold 9 oz. Georgian tumbler (original label)
31. Carmen 9 oz. Georgian tumbler (1 original label) (4)
32. #317 Carmen.5 oz. Georgian tumblers (1 tiny inside rough) (2)
33. #317 Mandarin Gold 5 oz. Georgian tumbler
34. #1201 Amber 2¹/₂ oz. Georgian tumbler, sgd.
35. #1201 Forest Green 2¹/₂ oz. Georgian tumbler
36. Topaz (satin) Wetherford 4" berry bowl
37. #602 Amber 5¹/₂" coasters (6) (set)
38. #1066 Crystal 6³/₄" ivy balls (2)
39. #4 Mt. Vernon individual sugar/creamer/tray (set)
40. #198 Amber cologne, complete dauber stopper
41. #P499 Mandarin Gold Calla Lily candlesticks (pr)
42. #3400/48 Mandarin Gold 13" bowl, 4 ftd, crimped shallow
43. #441 Crystal 10¹/₂" Round compote, etch #704
44. #993 Crystal 12¹/₂" bowl, 4 ftd, etch #755 (rose trellis) sgd.
45. #1236 Amber 7¹/₂" ivy ball, Crystal Keyhole stem & foot
46. #3400/91 Crown Tuscan 8" 3 part relish, 3 hdd.
47. #647 Crown Tuscan 6" 2 lite candlestick (1)
48. #512 Peachblo (satin) 9¹/₂" Rose Lady flower figure (minor under chip)
49. #3900 Mandarin Gold 12¹/₂" (across) high cakestand, rare
50. #157 Martha 10" deviled egg plate
51. #14 Ivory 10" bowl with original ebony base, 3 ftd.
52. #7966 4 oz. claret, gold encr Talisman Rose (D/1063)
53. #173 12" ctr. hdd. oval tray, satin, Decalware flowers
54. #3060 Light Emerald 2¹/₂ oz. wine, etch #520
55. #463 Amber 12" Dolphin Head oval ftd. bowl, rare
56. #814 tall cream pitcher, satin, Decalware flowers
57. #12 Gold Krystol 4¹/₂" ftd. ivy ball
58. #3900/114 32 oz. martini jug, cut King Edward, Sterling foot
59. #3077 Peachblo Imperial Hunt Scene finger bowl, narrow optic
60. #835 Amber 5" candlesticks, etch Cleo (pr)
61. #3500/31 Moonlight Blue 6" Ram's Head candlesticks (pr)
62. #P499 Emerald Green 6¹/₂" Calla Lily candlesticks (pr)
63. #1236 Royal Blue 7¹/₂" ivy ball, Crystal Keyhole stem & foot
64. #3011 Carmen Nude 7" comport, cupped top
65. #1955 Peachblo Crackle 1¹/₄ oz. tumblers (some ground) (4)
66. #3011/3 Crystal Nude saucer champagne, optic bowl
67. #1402/100 Forest Green Tally-Ho 6" comport, Crystal stem
68. #1704 Gold Krystol 5" top hat, unusual
69. #1704 Willow Blue 5" top hat, unusual
70. #789 Peachblo 9" Aero Optic vase, ftd.
71. #35 Emerald Green Seashell 4¹/₂" X 3¹/₂" cigarette box & cover

72. #4 Azurite bowl, sponged acid exterior
73. #1236 Crown Tuscan 7½" ivy ball, Keyhole stem
74. #2699 Buzz Saw Nearcut 5½" (#269) nappies (4)
75. #2699 Buzz Saw Nearcut 6" (#268) deep nappy, sgd.
76. #2699 Buzz Saw Nearcut 6" comport, ruffled edge, sgd.
77. #2699/215 Buzz Saw Nearcut quart tankard pitcher, sgd.
78. #99 Chelsea Lemonade bowl (ftd. punchbowl) cut flowers, rare
79. Chelsea Nearcut covered butterdish
80. Chelsea Nearcut 45/8" ftd. violet vase, cut flowers
81. Roses (satin finish pattern) Nearcut 9" deep bowl, very rare,sgd
82. #2631 Marjorie Nearcut cruets, original stopper, sgd.
83. #2631 Marjorie Nearcut napkin ring
84. #2631 Marjorie Nearcut 5 oz. cups (3)
85. #2635 Fernland Nearcut cruets, original stopper
86. #2651 Feather Nearcut wine
87. #2651 Feather Nearcut 14½" oval tray (small chip 1 handle)
88. #2651 Feather Nearcut 9½" cake salver (slight stain) sgd.
89. #2351 Nearcut 10" punchbowl, foot & 6 cups (nick on bowl) (set)
90. #2351 Nearcut 11" oval orange bowl & foot (Welker II,p.101)(rare)
91. Nearcut Duchess miniature (oil) night lamp, complete, rare
92. #2660 Wheat Sheaf Nearcut child's punch bowl
93. #2760 Daisy Nearcut tall jelly compote
94. #2766 Thistle Nearcut 10½" cake salver, sgd.
95. #2780 Strawberry Nearcut hdd custard cups, sgd (10)
96. #2630 Plymouth Nearcut 7" basket (#41 squat) sgd.
97. #2800 Community Nearcut ½ gallon jug (worn) sgd.
98. #3011/9 Crown Tuscan 3 oz. Nude cocktail, Gold bowl (flaw in arm)
99. #3900/130 7" 2 hdd ftd. bonbon
100. #760 Decagon 7" 2 hdd. basket, sgd.
101. #620 3 pc. sugar/creamer/tray, gold encr border trim (set)
102. #44 Amethyst 6" Seashell (snail) ftd. flower center, Crystal foot
103. #1121 Peachblo ice bucket, etch Chrysanthemum, sgd.
104. #1130 Crown Tuscan 11" ftd. vase (Nautilus)
105. #3795 Sweetheart stem goblets (3)
106. #3795 Sweetheart stem cocktails (4)
107. #39 Azurite 11½" bowl, black encr. border etch, early acid sign.
108. Ebony 10" boudeir lamps, original fittings, fair gold trim (2)
109. #3400/38 Royal Blue 12 oz. tumblers, etch Lorna, unusual (5)
110. #3400/66 Gold Krystol 10" club lunch plates, etch Gloria (6)
111. #1402/50 Amber Tally-Ho 74 oz. jug
112. #1402/49 Amber Tally-Ho 88 oz. jug, sgd (tiny nick)
113. #1402/25 Carmen 10½" dinner plates (1 scratched), sgd (3)
114. Carmen Tally-Ho 6" candy box and cover, hard to find
115. #1043 Ebony 8½" swan (Style I) sgd (chip on wing-minor)
116. #52 Forest Green Mt. Vernon 40 oz. decanter, orig. Crys. stopper
117. #3122 Gold Krystol 5 oz. ftd. tumbler, etch Diane, tiny nick
118. #3400/27 Light Emerald 12 oz. tumbler, etch Gloria, gold encr.
119. #3400/646 Amber 5" candlesticks, etch Appleblossom (pr)
120. W133 Milkglass Cascade 9½" vase (part original label)
121. #198 Amber cologne, gold silkscreen decor, complete dauber stopp.
122. #597 Gold Krystol 83/8" Decagon plates, etch #733, sgd (4)
123. Dianthus Pink 10" Doric Column candlesticks (pr)
124. Primrose 6" paste mold blown vase
125. #52 Amber Mt. Vernon 40 oz. decanter, original Crystal stopper
126. #84 Amber Mt. Vernon 14 oz. stein, applied Crystal handle, sgd.
127. #1402/52 Forest Green Tally-Ho ice bucket
128. #1328 Amber 28 oz. sherry decanter, original Crystal stopper
129. #115 Azurite matchbook ashtray, enamel roses, dated 1922, rare
130. #1206 76 oz. Twisted Optic water pitcher, ice lip
131. #1 Amber keg dispenser, Ebony log foot (no top)
132. Ebony 4½" early basket
133. #153 Azurite 8" plate, gold encr border etch mint
134. #1114 Peachblo 6½" Bashful Charlotte flower figure frog, mint
135. #513 Dianthus Pink 13" Draped Lady flower figure frog, mint
136. Light Emerald Melon Boy candlestick, very rare
137. #92 Mt. Vernon ice bucket, chrome handle & tongs
138. #518 8½" Draped Lady flower figure frog, mint
139. #3200 Carmen 5 oz. Wild Rose punch cups, super color (6)
140. #3400/60 Carmen 6" bread & butter plates (6)
141. #497 12 oz. tumblers, cut Wedding Rings (11)
142. #6004 Crown Tuscan 6" vase, gold encr Rosepoint, foot cracked

143. #1402/3 Carmen Tally-Ho 10 oz. goblet, gold encr D1107, rare
144. #702 Crown Tuscan miniature cornucopia
145. #520 Amber Buddha figure (very minor underbase chip) rare
146. #1040 Mandarin Gold 3" swan (Style III)
147. #3400/70 Willow Blue 3½", 4 ftd. cranberry, sgd.
148. #102 Lt. Emerald Mt. Vernon ind. 2 hdd oval salt, sgd.
149. #102 Stratford (Mt. Vernon) ind. 2 hdd oval salt, sgd.
150. #1402/100 Carmen 1 oz. cordials, gold encr D1007, rare (2)
151. #3103 Crystal ¾ oz. (stemmed) brandy
152. #3103 Carmen 1 oz. pousse cafe, Crystal stem & foot
153. #1327 Amber 1 oz. cordial
154. #87 Milkglass Mt. Vernon 1 oz. cordial
155. #3750 1 oz. high stem cordial
156. #1401 Jefferson 1 oz. cordial
157. #1402/100 Tally-Ho 1 oz. high stem cordial
158. #1400 Martha Washington 1 oz. cordial
159. #1341 Ebony 1 oz. cordial
160. #1341 Amethyst 1 oz. cordial, part of original label
161. #1402/37 Amethyst Tally-Ho 2½ oz. hdd whiskey tumbler
162. #3400/127 Forest Green 2½ oz. hdd whiskey tumbler, etch Portia
163. #250 Martha individual creamer
164. #925 After dinner cups, gold rings decor, sgd (2)
165. #3400/92 Amethyst, Amber, Royal Blue, Carmen 2½ oz. barrels (1 each)
166. #496 Pistachio, Peachblo, Amethyst 1 oz. Little Joe shots (1 each)
167. #1 Amberina 4½" muddler
168. #1 Emerald 4½" muddler
169. #1 Amber 4½" muddler
170. #1501 Peachblo 3" ace ashtrays (2)
171. Carmen Top Hat ashtray
172. Topaz Top Hat ashtray
173. Willow Blue Top Hat ashtray
174. #34 Mandarin Gold 3" ftd. shell
175. #1477 2" cigarette holder
176. Stackaway ashtray set, 1 each Moonlight, Mocha, Amethyst, Royal (set)
177. #1455 Moonlight Blue cig. box (chip inside) & (2) #1456 ashtrays (set)
178. #1956/1 Moonlight Blue 10" (hambone) ashtray
179. #1956/1 Peachblo 10" (hambone) ashtray
180. #16 Crown Tuscan Seashell 7" comport, super color, original label
181. #94 Helio 7" X 8½" sweet pea vase, platinum encr. border etch
182. Milkglass rolling pin, orig. wooden handles, mkd Imp. Mfg. Camb.
183. #1917/88 Mulberry ½ lb. candy jar & cover, wide optic, sgd.
184. Ebony 10" (across) tall compote, gold encr. border etch
185. #3797/82 Carmen Cambridge Square 12" bowl (scratches in bottom)
186. #993 Peachblo 12" bowl, 4 ftd, urn etching, sgd.
187. #3135 Peachblo 12 oz. tumbler, Windsor Castle etch, rare (2)
188. #3400/54 Willow Blue cups/saucers, etch Appleblossom, sgd (2)
189. #3400/60 Willow Blue 6" plates, etch Appleblossom, sgd (4)
190. #3400/62 Willow Blue 8½" plates, etch Appleblossom, sgd (4)
191. #3400/1181 Willow Blue 6" hdd. plate, sgd.
192. #3400/3 Lt. Emerald 11" low ftd. bowl, etch Appleblossom
193. #3400/71 Lt. Emerald 3" 4 ftd nutcups, etch Appleblossom (4)
194. #3400/38 Amethyst 80 oz. ball jug, etch Appleblossom, rare
195. #3400/64 Gold Krystal 10½" dinners, etch Appleblossom, sgd (4)
196. #3400/54 Gold Krystal cups/saucers, etch Appleblossom, sgd (6)
197. #3143/38 Moonlight Blue Gyro Optic 80 oz. ball jug
198. #3400/38 Ebony 80 oz. ball jug (slight scratches)
199. Set Cambridge Glass door knobs with original fittings
200. #3500/58 Crown Tuscan 6" 2 hdd mayonnaise
201. #1206 Amber 76 oz. Twisted Optic jug, ice lip
202. #1043 Emerald Green (dark) 8½" swan (Style III)
203. #1675 Crystal 8" 3 part relish, Eagle center handle
204. #3400/92 Royal Blue 32 oz. decanter, original Crystal stopper
205. #300 Emer, Pistachio, M. Blue, Pink, Tahoe, Mocha 2½ oz cremedementhe (6)
206. #3450 Forest Green Nautilus tumbler
207. #3103 Royal Blue 2 oz. sherry, Crystal stem & foot
208. #509 Light Emerald 8¾" Two Kid flower figure, mint
209. #3011 Crown Tuscan 7" Seashell Nude comport, Charleton roses, label
210. #1040 Crown Tuscan 3" swan (Style III) original label
211. #3900/116 Amber 80 oz. ball jug, optic
212. #1 Carmen Mt. Vernon 10 oz. goblet
213. #1066 Amethyst 7 oz. tall sherbets (6)

- 214. #1066 Amethyst 5 oz. ftd. tumblers (4)
- 215. #3139 12 oz. iced teas, rock crystal cut Maryland (6)
- 216. Rubina 8½" Twist candlesticks (chip side each socket), unusual (pr)
- 217. #51 Carmen Martha Washington 10 oz. goblets (2)
- 218. #P499 Crystal Calla Lily 6½" candlesticks (pr)
- 219. #1043 Light Emerald 8½" swan (Style I) sgd.
- 220. #1108 Light Emerald 9½" Mandolin Lady flower figure, mint
- 221. #676 Light Emerald 11" flip bowl (matches above) sgd.
- 222. AmberFarber peg nappies(4), #1563 crystal arm, Farber base (set)
- 223. #3011/13 Amber Nude 1 oz. brandy (chip on foot)
- 224. #2 Violet Mt. Vernon 6½ oz. tall sherbet (very hard to find)
- 225. #112 5½" openwork plate, enamel George Washington busthead, 1932 Centennial and trim in red, white, & blue enamel, rare
- 226. #693/3000 Polo Scene, gold encr. 2 pc. canape set, rare decor
- 227. Cane, glassmaker's whimsey, 52" long, hollow with white opaque stripes, guaranteed made at Cambridge, rare (cannot ship)
- 228. Carmen pressed Rosepoint iced tea
- 229. Amethyst pressed Rosepoint wine
- 230. #3011/14 Forest Green 1 oz. Nude cordial, rare
- 231. #3130 Tomato (experimental carmen/yellow opaque) 6 oz. tall sherbets (1 small chip)(1 glued together at bowl), ext.rare (2)
- 232. #1536 Cambridge Arms peg nappies (3)
- 233. #1563 Cambridge Arms 4 candlearm (2)
- 234. #628 Cambridge Arms low candlebase
- 235. #1562 Cambridge Arms triple vase arm
- 236. #1636 Cambridge Arms peg bluejay
- 237. 8" ruffled epergne vases (3)
- 238. #200 Caprice ftd. iced tea
- 239. #300 Caprice #300 cocktails (5)
- 240. #235 Caprice 6" rosebowl, 4 ftd.
- 241. #207 Caprice 3½" X 2½" cig. box & cover (tiny nicks under lid)
- 242. #13 Caprice 3½" coasters (8)
- 243. #96 Caprice salt shaker, glass lid (1)
- 244. #58 Caprice 10½" square bowl, deep, 4 ftd.
- 245. #62 Caprice Alpine 12½" belled bowl, 4 ftd, tiny roughness edge
- 246. #126 Caprice Alpine 12" 4 part relish, hldd, hard to find
- 247. #207 Moonlight Blue Caprice 3½" X 2½" cig. box & cover
- 248. #40 Moonlight Blue Caprice individual sugar & creamer (pr)
- 249. #41 Moonlight Blue Caprice large sugar & creamer (pr)
- 250. #67 Moonlight Blue Caprice 2½" low candlesticks (pr)
- 251. #32 Moonlight Blue Caprice 8½" luncheon plates (6)
- 252. #65 Moonlight Blue Caprice 11" 2 hldd, 4 ftd.
- 253. #70 Moonlight Blue Caprice 7" candlesticks with prisms (pr)
- 254. #61 Moonlight Blue Caprice Alpine 12½" crimp bowl (chip 1 foot)
- 255. #339 Amber Caprice 8½" vase (flat polish top instead of crimp)
- 256. #346 Amethyst Caprice 7½" vase (flat polish top instead of crimp)
- 257. #214 Mandarin Gold Caprice 3" ashtray
- 258. #3035 Appleblossom 6 oz. tall sherbets (4)
- 259. #3400/9 Appleblossom 7" candy box & cover
- 260. Blossomtime (Martha blank) 12" banana dish
- 261. #3111 Candlelight fingerbowl
- 262. #3400/91 Candlelight 8" 3 part relish, 3 hldd.
- 263. #3775 Chantilly 6 oz. tall sherbets (3)
- 264. Chantilly 7" belled vase in wire holder (8½" overall)
- 265. #3900/100 Chantilly 6 oz. oil creut & stopper
- 266. #P576 Chantilly 10½" cornucopia vase, Sterling base
- 267. #3400 Chantilly jug salt & pepper (pr)
- 268. Chantilly blown 8 oz. marmalade, Sterling lid & base
- 269. #1617 Chantilly hurricanes (bases plain) (chips base shades) (pr)
- 270. #3138 Chantilly 6 oz. tall sherbet (top ground)
- 271. #P206 Daffodil 2 division relish
- 272. #3400/67 Diane 12" 5 part celery & relish
- 273. #3400/157 Diane cocktail shaker, chrome Derby Shelton top
- 274. #3122 Diane 2½ oz. ftd. tumblers (chip 1 base) (6)
- 275. #3122 Diane 9 oz. goblets (6)
- 276. #3122 Diane 7 oz. tall sherbets (4)
- 277. #3500/37 Elaine 7" (10½" tall) hldd comport, gold encr., mint
- 278. #3400/200 Elaine 11" oval 3 part celery & relish, original label
- 279. #1402/52 Elaine Tally-Ho ice bucket (no handle)
- 280. #3121 Elaine 12 oz. ftd. iced tea

- 281. #1066 Elaine 11 oz. goblet, unusual
- 282. #7606 Marjorie finger bowls & liners (chip inside 1 bowl)(2 sets)
- 283. #7606 Marjorie 10 oz. goblets (2)
- 284. #7606 Marjorie 8 oz. tumblers (2)
- 285. #7606 Marjorie 6 oz. low sherbets (2)
- 286. #1402/73 Minerva 11" Tally-Ho pan bowl, sgd.
- 287. #3500/17 Minerva 12" ftd. bowl
- 288. #3400/4 Minerva 12" square 4 ftd. bowl
- 289. #3500/42 Minerva 12" urn & cover, gold encrusted, mint
- 290. #170 Portia 13" 4 ftd cakeplate (scratches) (nick inside 1 foot)
- 291. #3900/1177 Portia salt & pepper, plastic lids (pr)
- 292. #3400/38 Portia 12 oz. tumblers (balltop) (2)
- 293. #3400/91 Portia 8" 3 part relish, 3 hdd., gold encr., mint
- 294. #3900/120 Rosepoint 12" celery & relish (chip inside flange)
- 295. #646 Rosepoint 5" candlesticks, gold encr., mint (pr)
- 296. #3121 Rosepoint 1 oz. cordials (2)
- 297. #3500/37 Rosepoint 7" (10 $\frac{1}{2}$ " tall) 2 hdd. comport
- 298. #3900/126 Rosepoint 12" 2 hdd 3 part celery & relish
- 299. #3500 Rosepoint 10 oz. goblets (3)
- 300. #3500/91 Rosepoint 6" 2 hdd. square tray, unusual
- 301. #3500/64 Valencia 10" 2 hdd. 3 part celery & relish
- 302. #1532 Wildflower 3 pc. mayo set, gold encr.
- 303. #647 Wildflower 6" 2 lite candlesticks (pr)
- 304. #3400/38 Forest Green 80 oz. ball jug
- 305. #96 59 oz. tankard pitcher, cut Star (scratched)
- 306. #2899 Crystal 3 $\frac{1}{2}$ " flower frog, patent dated
- 307. #3778 12 oz. iced teas, rock crystal cut Larchmont (5)
- 308. #3060 Amber 5 oz. parfaits, etch #704 (6)
- 309. #3060 Amber 2 $\frac{1}{2}$ oz. wines, etch #704 (5)
- 310. #1402/100 Tally-Ho goblet, unknown rock crystal cut
- 311. #1402/100 Tally-Ho tall sherbet, unknown rock crystal cut
- 312. #1402/100 Tally-Ho 12 oz. ftd. tumbler, unknown rock crystal cut
- 313. #3077 Willow Blue 9 oz. goblets, unknown cut (2)
- 314. 1974 Caprice (blue) NCC collector's plate (Imperial glass)
- 315. #90 Ebony 8" stick vase, gold band trim
- 316. #3143/50 Moonlight Blue Gyro Optic 13 oz. tumblers (4)
- 317. #3500/55 6" 2 hdd square basket, sterling overlay floral
- 318. #3400/1181 6" 3 hdd plate, sterling overlay & etch floral
- 319. #1066 Amethyst 6 $\frac{3}{4}$ " ivy balls (2)
- 320. #3300 Willow Blue Moderne 3 $\frac{1}{2}$ oz. low sherbets (4)
- 321. 22 oz. cat bottle, some remaining enamel trim
- 322. #3400/646 Amber 5" keyhole candlesticks, etch Appleblossom (pr)
- 323. #861 Amber 11" ctr. hdd. 3 part server, etch #4 (annealing lines)
- 324. #1917/329 Helio 8" plates with 4 $\frac{1}{2}$ " seat (scratched) (2)
- 325. #3400/91 Amber 8" 3 part relish, etch Cleo, sgd.
- 326. #1393 Crystal cocktail mixer (minor nick edge of spout)
- 327. #18 Crown Tuscan 10" Seashell bowl, 3 toed, sgd (chip 2 feet)
- 328. #3400/113 Amber 35 oz. decanter, Farber holder, orig. stopper
- 329. #500/122 Light Emerald 56 oz. jug (no lid)
- 330. Krystolshell sugar & creamer (pr)
- 331. Krystolshell 2 hdd. bonbon
- 332. #1263 bottle & stopper, etched Ketchup
- 333. #663 6" 3 lite candlesticks (pr)
- 334. #3400/60 Heatherbloom 6" bread & butter plates, sgd (11)
- 335. #3400/62 Heatherbloom 8 $\frac{1}{2}$ " luncheon plates, sgd (11)
- 336. #957 Peachblo ice bucket, etch Tulip, sgd.
- 337. #898 Light Emerald sauce boat (for roast beef set)(tiny nick) sgd.
- 338. #3797/76 Cambridge Square salt shaker, chrome lid
- 339. #3797/10 Cambridge Square 4 $\frac{1}{2}$ oz. oils (inside nicks, 1 stained) (2)
- 340. #P101 32 oz. cocktail shaker, cut Belfast (base suncolored)
- 341. #2 Crown Tuscan 7" Seashell salad plate
- 342. #1 Crown Tuscan 5" Seashell bread & butter plates (1 chip) (4)
- 343. Opaque (flesh color) Yardley jar, plastic lid, orig. Yardley label
- 344. #7 Mt. Vernon cups/saucers (2 sets)
- 345. #5 Mt. Vernon 8 $\frac{1}{2}$ " luncheon plates (scratched) (12)
- 346. #52 Mt. Vernon 40 oz. decanter & original stopper
- 347. #870 Willow Blue Decagon 11" center hdd. sandwich tray
- 348. #3400/52 5" butter & cover
- 349. #3 5" star candlesticks (pr)
- 350. #1305 10 $\frac{1}{2}$ " keyhole stem urn vase (scratched, stain ring inside)