



Cambridge Crystal Ball

Published monthly by the National Cambridge Collectors, Inc.
to encourage and report the discovery of the elegant and boundless product
of the Cambridge Glass Company of Cambridge, Ohio

Issue No. 206

June 1990

From The President's Desk

Members of the Procrastinator's Club, Please Take Note: By the time you are reading this, Convention '90 will be just three short weeks away. You really do need to get that Registration form in the mail! For Class I Procrastinators there is still sufficient time to make plans to attend the 1990 NCC Convention, mail in the Registration form, and be in Cambridge by June 21st. But you must hurry!

All joking aside, if you haven't already mailed in your Registration form, do so immediately, as it must be in Cambridge by June 9th. Just in case you missed it, the Registration form was in your May newsletter.

I hope you all noticed the full page in the May issue that detailed the Special Airfare Program for this year's Convention. If you live in a market that is served by USAir, do take advantage of this offer and save yourself some money - money that you can spend later on Cambridge glass! For other travel discounts, refer back to the March issue of the Cambridge CRYSTAL BALL.

The Figural slide program will be ready for showing at the Convention but I am beginning to have doubts about the one on Cambridge Pinks. It is still a possibility, but I make no promises. The candle is already burning at both ends.

While many of you have travel plans that require a Sunday morning departure from Cambridge, I would urge anyone who can, to stay thru Sunday afternoon in order to attend the Former Cambridge Glass Co. Employees' Reunion. The date is Sunday, June 24th, at 1:30 pm - the site is the NCC Museum.

Also in the May newsletter was your election Ballot. Each year an election is held to fill three positions on the NCC Board of Directors, and those elected serve a four year term. I urge each and every member to vote, since by voting you are participating in the running of the club. In order to be counted, ballots must be received on or before June 15th.

Work is progressing on preparing the Museum and grounds for Convention visitors and the coming tourist season. If you are attending this year's Convention, but can't make the "Coffee with Cambridge" on Friday morning, do plan to visit the Museum sometime during the weekend. If your plans will bring you to the Cambridge area later in the year, be sure to include a visit at that time. Do note the extended Museum hours: Wednesday thru Saturday - 10 am to 4 pm and Sunday remains the same - 12 noon to 4 pm.

continued on page 14



Only a few more days...

**HAVE YOU
MAILED YOUR
REGISTRATION**

DEADLINE IS -JUNE 9TH

Cambridge Crystal Ball

Official publication of National Cambridge Collectors, Inc., a non-profit corporation with tax exempt status. Published once a month for the benefit of its members.

Membership is available for individual members at \$15 per year and additional members (12 years of age and residing in household) at \$3 each. All members have voting rights, but only one *Crystal Ball* will be mailed per household.

Back issues of the *Crystal Ball* are available (beginning with Issue No. 1, May 1973) for members only. Cost: \$1.00 each or 12 issues for \$10.00.

1989-90 Officers & Committee Chairpersons

President	Mark A. Nye
Vice-President	Cynthia A. Arent
Secretary	J. D. Hanes
Treasurer	William C. Smith
Sergeant-at-Arms	Marlene K. Snyder
Acquisition	Mark Nye, Lynn Welker, Bill Smith, Joy McFadden, J.D. Hanes
Budget & Finance	David B. Rankin
By-Laws	J. D. Hanes
Membership	Phyllis D. Smith
Museum—Facilities	Willard P. Kolb, Doyle Hanes
Museum—Interior	Lynn Welker, Janice Hughes, Marybelle Moorehead
Non-Glass Items	J. D. Hanes, Cindy Arent, Judy Momirov, Marlene Snyder
Nominating	Willard P. Kolb
Program	R. Clarke West
Project	William C. Smith
Public Relations	Bill & Phyllis Smith
Publicity	Cynthia A. Arent
Study Group Advisor	Phyllis D. Smith
1990 Auction	Lynn M. Welker
1990 Antique Show	Joy R. McFadden, Mary Beth Hackett
1990 Convention	Marybelle Moorehead
1990 Flea Market	Doyle C. Hanes
Crystal Ball Editor	Phyllis D. Smith

Classified Advertising Rates

10 cents per word \$2.00 minimum
We cannot mix type size in classified advertisements. Abbreviations and initials will count as words. Payment in full must accompany all ads.

Display Advertising Rates

(Camera-ready ads preferred)	Members	Non-Members
1/8 page	\$ 6.00	\$10.00
1/4 page	10.00	15.00
1/2 page	18.00	25.00
3/4 page	25.00	35.00
Full page	33.00	45.00

Dealers Directory

Five-line maximum \$18.00 for 12 months

Cambridge *Crystal Ball* assumes no responsibility for items advertised and will not be responsible for errors in price, description or other information.

Advertising copy, articles, club news and notices must be in our hands by the 10th of each month to assure publication in our next issue.

Paid advertisements containing reproductions or new glass will not knowingly be accepted for publication.

Opinions or information stated in any signed article or letter printed in the *Crystal Ball* are those of the authors and may or may not agree with National Cambridge Collectors, Inc. The Editor reserves the right to refuse and to edit any material submitted for publication so as to conform with the editorial style of the *Crystal Ball*.

Please Address All Correspondence to:

National Cambridge Collectors, Inc.
P.O. Box 416 Cambridge, Ohio 43725

President — Mark A. Nye, 305/221-0343

Secretary — J.D. Hanes, 614/432-6794

Editor — Phyllis Smith, 513/323-3888

Please notify us immediately of any change in your address.

Please enclose an SASE when requesting information.

CAMBRIDGE GLASS BOOKS FOR SALE

by National Cambridge Collectors, Inc.

* **COLORS IN CAMBRIDGE GLASS**
(128 pages - 60 color plates - fully indexed)
Hardbound with Price Guide \$19.95

* **1930-34 CAMBRIDGE GLASS CO. CATALOG REPRINT**
(250 pages *Out of Print* catalog)
Hardbound with Price Guide \$14.95

* **1956-58 CAMBRIDGE GLASS CO. CATALOG REPRINT**
(164 page reprint of original catalog)
Paperback \$6.95

1985 COMBINED PRICE GUIDE
for 1930-34 & 1949-53 catalog reprints Postpaid \$5.75

*NCC MEMBERS ONLY: These publications are available at 10% discount

by Bill & Phyllis Smith

CAMBRIDGE GLASS 1927-1929
(66 page reprint of original catalog)
Paperback with Identification Guide \$7.95

by Cambridge Buffs Study Group

NEARCUT
(108 page reprint of 1910 Cambridge Catalog)
Paperback with Price Guide \$9.95

by Mary, Lyle and Lynn Welker

CAMBRIDGE GLASS CO.
(120 pages of reprint from 8 old catalogs)
Paperback \$10.00

CAMBRIDGE, OHIO GLASS IN COLOR II
Spiralbound \$5.95

by Harold and Judy Bennett

1903 CAMBRIDGE GLASS CO. CATALOG REPRINT
(106 page reprint of an original catalog)
Paperback \$7.50

Address your orders to:

BOOKS
National Cambridge Collectors, Inc.
P.O. Box 416
Cambridge, OH 43725

Please add \$1.00 (P & I) per order.

(Not required for Price Guide)

Ohio residents please add 6% state sales tax.

DEALER DISCOUNTS AVAILABLE - PLEASE WRITE!

NCC Museum of Cambridge Glass

The Museum is located on U.S.40, one-eighth mile East of I-77 near Cambridge. Hours: 10 am to 4 pm Wednesday thru Saturday. Noon to 4 pm Sunday. March thru October Closed: Monday & Tuesday Easter and July 4th

Phone: 614/432-4245

MARY BURIK

WORKER OF THE MONTH

by LORRAINE WEINMAN

As a recent guest of the Cambridge Cordials Study Group, Mary Burik agreed to a videotaped interview. This former Cambridge Glass Company worker has now added her knowledge and personal memories to this ongoing project.



MARY BURIK

Mary described her experiences in the Hot Wax and Etching departments. She was employed at the Cambridge Glass Company two separate times. The first was for only a short time; but, the second was from 1935 until the company closed. Since she lived in Byesville, she took a bus to get to work . . . but found that around Christmas when there were so many shoppers and the weather was nice, it was quicker to walk home along the railroad tracks. Anyone familiar with the area realizes that this is not just a "walk around the block."

In the Hot Wax department, the pay was by "day rate," not "piece work." Her wages were eighteen cents an hour for six and a half days of work (nine dollars a week). When asked if there were any pieces of glass that could be pur-

chased for eighteen cents, she replied that you could sign up for goblets that were seconds, selling for seventeen cents apiece. Mary stated, that originally they had no vacation or insurance benefits. Later on they did get some insurance.

Mary gave an account of what she did while employed in the Graduating department. She described how one person would use water to measure amounts and would put dots on the containers; then, Mary's job was to etch a circle around the dots.

She continued with a vivid description of the Wax department. Each girl had her own table with her own tools. The tables were made of tin and had heated tubs of wax on them. The workers used different sized artist brushes which they dipped in the hot wax and then applied to the places where the glass was to remain bare. She showed how she put the wax on the top edge and inside of the glass. The stems were dipped last. While the wax on the stems was still warm, they were stuck to a board that had the worker's number on it. This way the company could keep track of production. Each worker inspected her own work. Those pieces with errors could be washed off and started over. After the wax was applied, the glass was taken to be dipped in the acid.

Mary's favorites were the sherbets because she found them to be the easiest to handle. She said that plates and bowls were a lot slower. Some days they did stemware all the day and other days they had a variety of items. While she was working there, she only worked on crystal items.

These memories and descriptions have helped us picture these processes. The personal stories were extremely interesting. We appreciate Mary Burik's cooperation in this interview and videotaping. The next "Worker of the Month" will be Susanna Stillion, who offered some additional views of working at the Cambridge Glass Company.

NATIONAL CAMBRIDGE COLLECTORS, INC.

ANNUAL CONVENTION

June 21 - 24, 1990

TENTATIVE SCHEDULE of CONVENTION EVENTS

THURSDAY - June 21st

- 10:00 am - Convention Office Opens in Room 100. Registration packets available for pick up. **Bring console sets and silent & mini-auction donations to Room 100.** Convention Office closes at 5 pm.
- 7:00 pm - Convention Chairman's Reception. Upstairs Banquet Room.
Silent Auction - Refreshments - Cash Bar. **Registration Required.**

FRIDAY - June 22nd

- 9:00 am - "Coffee with Cambridge" at the Museum. **Registration Required.**
Registration packets available for pick up at Museum.
- 11:00 am - Convention Office Opens. Registration packets available for pick up in Room 100. **Bring console sets and mini-auction donations to Room 100 before 2 pm.** Convention Office Closes at 7 pm.
- 12 noon - Slide Programs begin.
- 4:30 pm - Book Sales Opens - Room 101. Closes at 7 pm.
- 5:00 pm - Antique Show Opens - **Ticket Required.** Closes at 8 pm.
Console sets on display in Room 100 - now until 2 pm Saturday.
- 8:00 pm - Opening Session - Upstairs Banquet Room. **Ticket Required.**
Cash Bar - Dinner - Announcements - Mini-Auction.

SATURDAY - June 23rd

- 5:00 am - Dealer set up at Flea Market. **Admission Fee** for non-dealers.
- 6:00 am - Flea Market Opens - Buckeye Trail High School, Old Washington.
Admission Fee.
- 8:00 am - Buffet Breakfast - Upstairs Banquet Room. **Ticket Required.**
- 9:15 am - Saturday Morning Program
Guest Speaker: **Lynn Welker.** Topic: "Cambridge Cordials"
- 11:00 am - Antique Show reopens. Closes at 5:30 pm.
Book Sales reopens - Room 101. Closes at 5 pm.
Convention Office reopens - Room 100. Closes at 4 pm.
- 12 noon - Slide Programs Resume.
- 3:00 pm - Annual "Show & Tell" Program - Location to be announced.
Bring your interesting items for discussion and identification.
Leader: **Lynn Welker.**
- 6:30 pm - President's Reception - Banquet Room Upstairs. Cash Bar.
- 7:00 pm - Annual National Cambridge Collector's Banquet. **Ticket Required.**
Guest Speaker: **James W. Bryan,** President, Bryan Crystal Inc.
Topic: "America's Elegant Glassware: Comparisons Between Yesterday and Today"

SUNDAY - June 24th

- 8:00 am - Buffet Breakfast - Upstairs Banquet Room. **Ticket Required.**
Annual Meeting of N.C.C., Inc. to follow breakfast.
- 11:00 am - Antique Show reopens. Book Sales reopen. Both close at 4 pm.
- 1:30 pm - Former Cambridge Glass Company Employees' Reunion.
N.C.C. Museum. **Bill Smith** Coordinator.

CONVENTION SPEAKERS

R. Clarke West, Program and Entertainment chairman, has obtained the services of two outstanding speakers for our Convention. If you have not sent in your registration, please do so soon. The deadline is June 9th.

SATURDAY BREAKFAST

Our Saturday breakfast speaker will be, the well known Cambridge glass author, authority on many glass companies, antique dealer, and N.C.C. Board member, Lynn Welker. Appropriately, his topic will be "Cambridge Cordials," the theme for this year's Convention.



LYNN WELKER

Mr. Welker lives in New Concord, Ohio, where he is manager of the Margaret Lane Antique shop.

Along with his parents, Lyle & Mary Welker, he has co-authored two color books on Cambridge glass, and published two books contain-

ing reprinted pages from several original Cambridge Glass Company catalogs.

Lynn became a member of N.C.C. in 1975 and was elected to the Board of Directors in the Spring of that same year. He has served as chairman of the Auction committee for the past fourteen years.

He has collected Cambridge glass for many years and has a fabulous collection of rare and unusual pieces, most of which can be seen in the N.C.C. Museum.

Lynn is a 1970 graduate of Muskingum College with a degree in Music. He is a member of the W.E. Methodist Church, where he sings in the choir and serves on the Administrative Board. He is also an active advisor of the Kappa Sigma Fraternity at Muskingum College.

Lynn has spoken to us at both the Saturday breakfast and banquet, in past years, and we are indeed fortunate that he has agreed to speak to us once again.

ANNUAL BANQUET

Saturday evening we will be honored to have as our guest speaker, James W. Bryan, President of Bryan Crystal, Inc., Sharon, Pennsylvania.



JAMES W. BRYAN

According to Mr. Bryan, Bryan Crystal, Inc., is the only glass producing company in the United States, that cuts and polishes fine crystal by hand.

An article appearing in the February 16, 1990, evening edition of The Herald, Sharon, Pennsylvania, by staff writer Amy Garvey, describes in detail just what this young man (he's only 34) and his company is all about.

The following, is that article:

"Gesturing at dust-covered, bulky machinery that cuts and polishes lead crystal, James Bryan joked that he runs 'a working museum of glass machinery.' Some of the cutting stones and machines that run them date from just after the Civil War.

But hidden behind sheets of plywood in the Silver Street factory is a piece of glass-working machinery so new, so high-tech, so experimental that its manufacturer made Bryan vow not to show it to anyone until everyone is certain it works the way it's supposed to.

'The glass industry went to hell in the 1960s with foreign competition, just like the automobile industry did,' said Bryan, 34. 'The difference is, nobody cared about the glass industry, so no federal funds were poured into it. More than 80 percent of the companies went out of business.'

Bryan acquired his old machinery at bargain prices at those going-out-of-business sales. He has even taken a shovel and gone to sites where an entire building was demolished and plowed under, and conducted a salvage operation for parts. His new 'secret weapon' machine should put those others out of operation.

continued on page 6

SPEAKERS continued from page 5

'The new machine will enable us to manufacture glass at a rate 40 times faster than any lead crystal facility in the world,' he explained. 'What would take \$5 to \$10 to make a sample of, with the new machine will only cost \$1.'

Of those glass companies that did survive the '60s, none are doing what Bryan does. Everywhere else, machines are doing the decorative cutting of crystal. Bryan and his 14 employees do it by hand. The hand-decorating gives a much more intricate cut and design than machines can produce.

'What we're doing hasn't been done in America in 20 years, and how we're starting hasn't been done in 100 years. I like to think we're bringing up the prestige level of American glass,' he said.

The Sharon native acquired his appreciation of high-quality decorated crystal when, as a child, his parents lugged him along on their glass-collecting excursions. The old-timers who were doing glass cutting by hand took a liking to the youngster and entertained him with glass-cutting lessons while his parents shopped. When Bryan was a teen-ager, and those glass companies had closed, he visited those new friends at their homes.

Those visits, where his 'teachers' had glass-cutting machinery in their basements, and a few trips to Italy to confer with the masters there, mark the sum total of Bryan's glass-cutting education. A college degree in speech communications took him into radio for awhile, but he wasn't having fun there, he said. With the tolerance and support of his new wife, in 1985 Bryan set up a glass factory in the basement of his home in Warren, Ohio; let the word out in the industry that he was available; and began doing what he loved best.

He advertised only once. A \$30,000 spread in Town and Country magazine (touting Bryan Glass as 'among America's finest') right next to an ad for Tiffany & Co. let the world know that Bryan was in business without letting it know that the business was in a basement. It wasn't long before more orders for hand-cut crystal come in than one man could fill.

For 13 months, Bryan struggled with Ohio authorities trying to find a site and a starter loan to take his business out of the basement. One day, he wrote Sharon Mayor, Robert T. Price about his quandary.

'I couldn't believe it. In three days I got everything I had been asking for in the last 13 months,' Bryan said. 'When I saw this place I said it would be everything I would need for

the next 20 years. Five months later, we outgrew this. We met our five-year projection in just five months.'

Today, Bryan is working on plans to build a factory in Sharon's South Flats Industrial Park, and has changed the company's name to keep up with his increased crystal work.

It seems the world wants what Bryan can do. He has orders from all over the globe for the fine work he produces. Some from the major companies that are his competitors (such as Lennox) send work to Bryan Crystal to be finished. Occasionally, an individual with an awful lot of money to spend on a special gift will phone in a request for a one of a kind piece. Bryan creates those himself.

The bulk of his employees are unskilled laborers hired from the welfare rolls and trained by Bryan.

'With the closing of the glass companies, the apprentice system lost two generations. This is the beginning of a new apprentice generation. Except it's a three-week crash course that replaces four to seven years of apprenticeship . . . I take the mystique out of it. If they never had a preconceived notion of how to do it, they won't know it's supposed to be difficult. I say, 'This is how you do it, and here, you try it, now. It's really hand-eye coordination, not artistic skill. I have forklift operators and truck drivers doing the work. I'm willing to give them a chance, and we have very few failures. It's amazing.'

With the opening of the new building, Bryan's employment rolls will swell. He'll have the space to produce glass from scratch, and will add a glass-blower to his outfit as a tourist attraction. His plans include opening the Silver Street building as an outlet store for his wares.

'We can make your table look a little better, or add a little bit of sparkle to a room. People might not realize that a lot of our product line is not much more expensive than other glass.'"

Won't you please join us on Saturday, June 23rd for, what should prove to be, two very interesting programs.

REMEMBER THESE IMPORTANT DATES

JUNE 9th
Convention Registration deadline.

JUNE 15th
Ballots must reach N.C.C.

CAMBRIDGE - - THE FIRST YEARS

PART III

by MARK A. NYE

Last month we concluded with a news item from Crockery and Glass Journal dated October 1908, that indicated business for the Cambridge Glass Co. was quite good. We resume our history this month with a news item and a Cambridge advertisement, both from the Glass and Pottery World issue of January 1909. Throughout this month's and future articles, the source of each item will be indicated by using the following code: CGJ = Crockery and Glass Journal; CGL = China, Glass and Lamps. Other less frequently used journals will be fully identified.

01/--/09 "Cambridge Glass Co. Cambridge, O.the Guernsey pattern of tableware in semi-colonial treatment is a most noticeable departure from other lines. It is decidedly good. A very heavy imitation cut pattern, No. 2660 is especially rich. The large punch bowls have a foot of a shape not heretofore employed and are sure to meet with favor. Some of the vases have the weight and brilliancy of cut glass." Glass and Pottery World.

01/--/09 The following is the text of a Cambridge advertisement that was placed in Glass and Pottery World in January 1909. "High Grade Tableware. GUERNSEY PATTERN. Semi-Colonial - - Distinctively Different. In Shape, Metal and Finish, it Leads the Procession for 1909."

01/09/09 "The Cambridge Glass Co. has brought nothing to the show except what it has to offer in the form of new productions. Mr. C. C. Rockhill was in charge when the display was first installed and was joined later in the week by A. J. Bennett. There are all sorts of things in the display for it is display from which the buyer is expected to select his needs in the glass line regardless of general competition. One of the principal features is the new Colonial line in pressed ware. The shapes are particularly attractive and present an excellent appearance. Near them is shown the medium weight imitation cut pattern, with its countless facets from which is reflected the light as though it had only come from the hand of the cutter. Then there is a line of

light-weight imitation cutting, also presenting a pleasing appearance and of undoubted durability. One handsome cut punch bowl is the center of attraction because of its imposing appearance and the excellence of the work. These things combine with whiskey decanters, jugs and graceful vases to complete a display that is at once attractive and educational. A novelty which appears in this display, as in many others, is the salt shaker with the glass top, metal bound to make it durable, but so arranged as to prevent the salt from touching the metal. The company is not showing its tumblers and bar goods this year, as they are very well known to the trade." CGL

10/02/09 "The Cambridge Glass Co., Cambridge, O., will soon have a new general catalog. Send in your name and get one. It will be worth while." CGL

10/09/09 "The Cambridge Glass Co., Cambridge, O. They make the patented Bennett Lemon Extractor. Sells on sight. If you have not seen it get in line." CGL

10/30/09 "The new catalog to be ready for 1910 business has some new features that are peculiar to the Cambridge Glass Co." CGL

11/13/09 "Business at the Cambridge Glass Co.'s works was never as good as it is at the present time. Three furnaces and one day tank are in operation, while a new day tank, just completed, has fire in and will be melting glass sometime this week. The company recently purchased eight more presses, mostly small ones, for use in this factory. The company has tremendous order for toy sets." CGL

12/25/09 "No. 2760 design has no equal in pressed glass. Combination Rock Crystal design made on patented shape. All pieces footed and of exquisite form. Offered in straight crystal and etched. Suitable for the best trade. Cambridge Glass Co." CGL

12/25/09 "No. 2750 design is a new Colonial, perfectly plain, correct in every detail. Cambridge Glass Co." CGL

01/15/10 "Notable among the novelties exhibited at the Fort Pitt Hotel by the Cambridge Glass Co. is the famous lemon squeezer. It allows the juice to escape but retains the seeds. Housekeepers demand them. Buyers find no better sellers. The one hole shaker made by the Cambridge Glass Co. and

continued on page 8

FIRST YEARS continued from page 7

shown in its exhibit . . . tells its own story. there is nothing better." CGL

02/03/10 "The floral display in the suite at the Ft. Pitt occupied by the Cambridge Glass Co. was one of the delights of the exhibit. Here and there was a bouquet of flowers that added brightness to the display, and A. J. Bennett, who was in charge, was complimented highly upon his efforts in this direction." CGJ

04/25/10 "The Cambridge Glass Co. ... have been experiencing a considerable amount of trouble on account of a pronounced shortage of small help. Broken pots have also been a large factor of late in preventing the management from securing full production." CGL

05/09/10 "At the Byesville factory of the Cambridge Glass Co., very little work has been done as yet owing to the breaking of pots." CGL

12/05/10 "The Cambridge Glass Co. are operating their 12 pot furnace at Byesville, O. with eleven shops on the payroll. A fine grade of glass is being turned into a general line of pressed goods. Quite a number of repairs have been made recently at this plant. Electricity has been installed and material is on the ground for a new wind pipe which will in all probability be installed within a week or ten days. At the Company's big Cambridge plant President A. J. Bennett reports all the business they can take care of. Among the special trade winners of this company may be mentioned their semi-colonial line, a very fine plain effect with small mitres and rich fine cutting on very unique and practical shapes; the Rock Crystal Scotch Thistle design, claimed to be the most perfect rock crystal design yet produced, and three other very choice rich cut patterns in an extensive variety of items and shapes that appeal to buyers."

01/09/11 "... Silver-etched novelties appear in profusion, adding luster to the display and making their presence felt as one of the chief points of attraction. There is another design in old roses and nasturtium, each very beautiful and well worthy of the praise they bring from every quarter. Among the novelties may be found the large orange and grapefruit juice extractor, modeled after the Bennett lemon juice extractor, but larger, and the famous Bennett one-hole salt cellar. Another element of attraction in the display is the Buzz-Saw

cutting, modeled after the old cut glass, and one of the best things seen this year." CGL

06/01/11 "Willing Dealing just received a consignment of samples of pressed glass of a rich and pleasing pattern. The strawberry plant, with both blossoms and fruit, is used as the motive with remarkable ingenuity. A few seasonable pieces bearing this design in the form of an ice cream set would not fail to fulfill its mission." CGJ

06/26/11 "The Cambridge Glass Co. ... will install a complete producer system in their plant during the summer stop period." CGL

12/18/11 "Nearcut Fancy Portables and Oil Lamps. This lamp is now ready for the market and your orders can be promptly filled. We have also several other lamps completed and ready for the trade. Let us make you up a sample package at this time. The illustration is only one of the new ideas that we have on display at the January Show in Pittsburg. Our line of Gas and Electric Portables as well as line of fancy Imitation Cut Glass Oil Lamps are being shown at Room 643 Fort Pitt Hotel. This same design Portable can be furnished with gas fittings. We have also Kerosene Oil Lamps with Center Draft Burner." CGL Note: This is the text of an advertisement that featured an illustration of the No. 2760 Electric Portable.

01/08/12 "When they tell you in the pleasant rooms where are located the display of the Cambridge Glass Co., of Cambridge, O., that 'everything's new' they do not adhere to the strict letter of the law, but they are so close to it that they may be pardoned for overstepping the bounds just a little. As a matter of fact the showing made by the company could not be excelled. It is among the very best displays of glass ever seen in Pittsburg or any other city and is pleasing in the extreme. Particular attention has been give to artistic display, and the room is filled with reflected light and a thousand different articles from which it springs. The Cambridge company has fairly outdone itself in preparing for the excellent trade glass men anticipate this year, and there is no reason why its expectations should not be realized to the fullest extent. Foremost in the display is a handsome line of lamps. Here the touch of the artist is clearly seen in splendid and substantial uprights of glass, surmounted by a shade which reflects the light form within and without."

to be continued next month

No. 2504 Ware.

SCALE, HALF SIZE.



Butter and Cover.
Packed 4½ dozen in a barrel.



Spoon.
Packed 9 dozen in a barrel.



Cream, Pressed Handle.
Packed 8 dozen in a barrel.

Set packs 1¾ dozen in a barrel.



Sugar and Cover.
Packed 6 dozen in a barrel.



Cream, Stuck Handle.
Packed 8 dozen in a barrel.



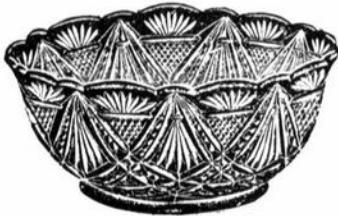
Individual Salt.
Packed 75 dozen in a barrel.



Salt and Pepper.
Packed 32 dozen in a barrel.

No. 2504 Ware.

SCALE, HALF SIZE.



4 inch Nappy, Flared.
Packed 36 dozen in a barrel.



4½ inch Nappy, Round.
Packed 36 dozen in a barrel.



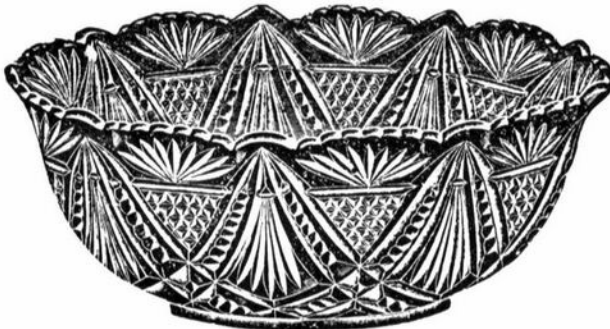
4½ inch Nappy, Cupped.
Packed 28 dozen in a barrel.



8 inch Nappy, Cupped.
Packed 3 dozen in a barrel.



7 inch Nappy, Cupped.
Packed 4 dozen in a barrel.
Also made in 6 inch Size.
6 inch Nappy.
Packed 6 dozen in a barrel.



8 inch Nappy, Flared.
Packed 4½ dozen in a barrel.



7 inch Nappy, Flared.
Packed 6 dozen in a barrel.
Also made in 6 inch size.
6 inch Nappy.
Packed 8 dozen in a barrel.



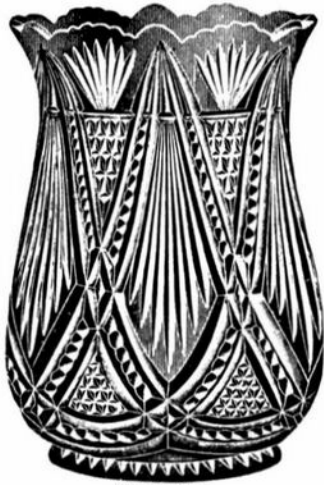
8 inch Nappy, Round.
Packed 2½ dozen in a barrel.
Also made in 6 inch size.
6 inch Nappy.
Packed 7 dozen in a barrel.



7 inch Nappy, Round.
Packed 5 dozen in a barrel.

No. 2504 Ware.

SCALE, HALF SIZE.



Tall Celery.
Packed 5¼ dozen in a barrel.



Half Gallon Pitcher, Stuck Handle.
Packed 2 dozen in a barrel.



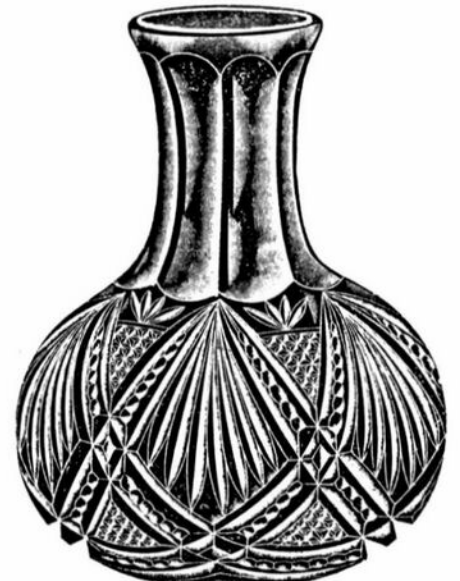
Tumbler.
Packed 20 dozen in a barrel.



Half Gallon Tankard Jug, Tall.
Packed 2 dozen in a barrel.



8 ounce Oil, D. S.
Packed 12 dozen in a barrel.



Pressed Water Bottle.
Packed 2¼ dozen in a barrel.

In Memoriam

*"Oh, safely rest thy soul on high,
A long good-bye beyond the sky,
A place for thee, thou earned thy keep,
Where Angels care in peaceful sleep,
And harken now, they softly sing,
Eternal spring to thee I bring."*

GEORGE SIONAKIDES
DeWitt, Michigan
1946 - 1990

The glass collecting world has lost another good friend. George Sionakides (known affectionately to his many friends as, "George the Greek") passed away on Friday, May 18th. His death was not unexpected, as he had been fighting a battle with cancer for several years. But, his death leaves a void that cannot be filled, as George was a one of a kind personality.

George was born in Greece in 1946, and came to the United States at the age of 18. He attended Iowa Wesleyan College and Michigan State University, where he received his Masters Degree in Physics. After graduation, he was hired by M.S.U. and while working there, he and his wife Roni discovered D.G. So great was their interest and love of fine glassware, that George resigned his position with the University in order to devote full time to his D.G. business. He was widely known and respected for his knowledge of all collectible glass and his straight forward business practices. We have all enjoyed the many articles he wrote for the DAZE and the N.D.G.A. newsletter, describing his escapades "On The Road," as a dealer in collectible glass. George and Roni, along with their son Zack have been dealers in our Cambridge Show for many years, and had hoped to be with us again this year. George called to cancel, just a few weeks ago.

George is survived by his wife Roni and their eleven year old son Zack. Also his mother and sister who were visiting with him, at the time of his death, from Greece.

Services were held at 2:30 p.m. at the Greek Orthodox Church, Lansing, Michigan, on Monday, May 21st. It was requested that flowers be omitted, but donations to the Nat'l. Cambridge Collectors, Nat'l. Depression Glass Assoc., Fostoria Glass Collectors, or the American Cancer Soc., would be appreciated.

National Cambridge Collector's extend heart-

felt sympathy to the family, and to the many friends, of our dear friend George, who will be greatly missed.

MARY E. MOOREHEAD
Cambridge, Ohio

Mary E. Moorehead passed away April 1st in Cambridge, Ohio.

Mrs. Moorehead was not a member of N.C.C., but we do express our sympathy to her son Charles, daughter-in-law, N.C.C. Board Member and Convention Chairperson, Marybelle, two grandchildren, two great-grandchildren and other family members and friends.

EDWARD EMBREE
Cambridge, Ohio

Former N.C.C. member, Edward Embree passed away April 25th, following a four year battle with cancer. He is survived by his dear wife Reba, their adult children, grandchildren and other family members and friends.

Reba has been an active and well known member of N.C.C. since it's beginning. We do wish to express our sympathy to her and the entire Embree family.

Fund Drive Update

Recent contributors to the fund drive are: Robert Dietrich; Carrie & George Stone; J.D. Dixon; Ronald Hermone; Luene Brandt; Alfred & Joyce Colangelo; Ron Hufford; Wilbur & Adrianna Maloney; and Robert Lawrence.

Among the items purchased, during the past few months, with money raised by the drive are: #1108 lt. emerald 9½" Mandolin Lady; carmen Swan punch cup; #2651 Feather Nearcut cake salver; #2351 Nearcut punch bowl, foot & 6 cups; #3400/38 royal blue tumbler, etched Lorna; #509 amber 8½" Two-Kid; #512 satin peachblo 9½" Rose Lady; and last, but not least, an outstanding Caprice Display stand, once used in a Midwest department or jewelry store.

Your contributions to the fund drive are helping us acquire a small but representative core collection of Cambridge glass. Keep that money coming in since the larger the amount available, the more glass we can buy.

Study Club News

STUDY GROUP #7 - EASTERN OHIO "THE CAMBRIDGE BUFFS" Phone: 614/432-5230

The Cambridge Buffs Study Group held their meeting April 22nd, in the home of Tom and Deanne Gray. There were ten members in attendance.

Study program for the evening was on Cambridge cream and sugars. Seventy-one different examples in patterns, etchings and colors were displayed. Included were: Dresden, Cleo, blue #1096, etch #703 in peach-blo, both old and new Wildflower, amber Everglade, cinnamon etched Grape Tally-Ho, blue Carnival, Cambridge Square, Inverted Strawberry, Jenny Lind, Heirloom, Harvest etch, Martha Washington, Lily of the Valley etch, Caprice, Mt. Vernon, Lotus, Dorothy, Daisy, Marjorie, Radium, ebony, Sea Shell, carmen and many more. This was quite a selection. The Study Group may make a slide presentation of them.

Next meeting will be held in the home of Jim and Shirley Douglas.

submitted by Deanne Gray

STUDY GROUP #13 - SOUTH WEST OHIO "MIAMI VALLEY, OHIO"

The Miami Valley, Ohio Study Group met April 10th, in the Huber Heights Library. There were sixteen members present.

Bill Smith went over the items we have for our project at the Convention. He also discussed the need for a new price guide for the 1930-34 and 1949-53 Catalog Reprints that will soon be reprinted. Several members will be working on this and Sue Rankin volunteered to do the final averaging.

It was suggested that our September meeting program be on "Summer Finds." December 11th was suggested as a Christmas dinner meeting date. Jim Kennon will speak to the local Heisey Study club concerning arrangements for us to meet together.

Our program for the evening was the color "Green." All the Cambridge greens were

represented. A black light was used. Several other companies green colors were present and used for comparison.

"Show & Tell" included: crystal #3130 etched Gloria; crystal #3500 cut Adonis; tin railroau seal "Cambridge Glass" - used to seal boxcars; #3400 forest green 32 oz. jug with Farber snap-ons & 5 barrel tumblers; Tally-Ho crystal frosted, divided mayo with silver overlay water lilies and pods; and an old pattern glass, footed, large pitcher with ruby flashing, the maker unknown.

submitted by Vicki Wollenhaupt

STUDY GROUP #14 - CAMBRIDGE, OHIO "THE CAMBRIDGE CORDIALS" Contact person - Judy Momirov Phone: 614/432-2897

The Cambridge Cordials Study Group held their meeting April 21st at the home of Carl and Shirley Beynon. There were nine members and three guests present.

Our former glass company employees were Mary Burik and Susanna Stillion, from the Etching department. (see related article on page 3)

Items for "Show & Tell" included: 4" crystal swan; emerald Nautilus salt shaker; Caprice #91 salt, Alpine moonlight blue; #3400/76 cabinet flask etched Portia; shot glass etched Gloria; #3400 bowl w/unknown cutting; #157 mustard & cover etched Rosepoint; #274 ebony vase gold encrusted Wildflower; #3400 cream etched Rosepoint; #165 vase, madeira etched Tulip w/border etch; #889 peach-blo salt & pepper; #3060 8 oz. ftd. tumbler, crystal foot, carmen bowl, etched #731; #680 dresser compact, blue bell, etched #713 gold encrusted w/frosted lid; #91 vase, ebony w/enameled flowers; oval amber cheese plate etched Hunt Scene; emerald decanter, hollow stopper, etched Hunt Scene; Jade bowl with etched baskets & flowers, with border etch, border and baskets in gold, flowers enameled.

Our next meeting will be held at the Museum Storage building.

submitted by J. D. Hanes

PLEASE - DON'T FORGET

To bring your console sets for the Banquet tables - and your donations for both the Silent and Mini-Auctions. THANKS Marybelle

Sidney Garrett

Sorry, we made a mistake

As announced in last month's CRYSTAL BALL, Sid Garrett will be demonstrating his glass cutting ability for us again this year. However, he will be doing it at the Degenhart Museum and not the NCC Storage building as announced.

The arrangements are the same. He will put on a glass cutting demonstration for us at approximately 10 am, Saturday morning. Plan to come to the NCC Museum at 9 am for "Coffee with Cambridge," visit the Museum and Storage building, and then around 10 am, you can journey to the Degenhart Museum for his demonstration.



SID GARRETT

We are sorry for our error - but feel sure you will enjoy this demonstration, as well as your visit to the Degenhart Museum.

NEW COLLECTORS CLUB FORMED

The National Westmoreland Glass Collectors Club has been formed and they are holding a Seminar Dinner and their first All Glass Show & Sale on June 8, 9 & 10, 1990. Location is the Eastland Exhibitors Center, East McKeesport, PA (1 mile E. Geo. Westinghouse Bridge - 1½ miles S. Rt. 30).

Anyone interested in attending their activities are asked to call Jo Forsythe at 412/863-1329 or write to: Westmoreland Glass Museum, 1725 Trimble Ave., Port Vue, PA 15133.

PRESIDENT continued from page 1

I can't believe it, but I was home for the entire month of April. However, all that changes soon. By the time you read this, I will have been in Cambridge and Central Ohio for a week, and will be looking forward to returning for the Convention, the August Quarterly meeting and picnic, and the November Quarterly meeting and dinner. In between those trips I have a business trip to Chicago in July and a trip to the Northwest in late September to be a guest at the Medford, Oregon show. Other possibilities are the NDGA Convention in July and a trip to the Midwest sometime during the summer months. An, on top of this, my boss expects me to work!

See you at the Convention!

— Classified —

FOR SALE: #3122 Diane etched: 7-1/4" goblets (11); 5" juices (12); sherbets (8); 6-1/4" underplates (5). Make offer. Barbara Jennings, 134 Garden Parkway, Henrietta, NY 14467. Phone: 716/334-5066.

FOR SALE: #3400/38 carmen pitcher \$80. #3400/38 amethyst pitcher w/8 10 oz. tumblers, 9 pieces \$110. #880/8701 center-handled bridge tray, pink \$35. Royal blue hld. basket in Farber mosaic gold holder \$35. Gloria, amber #3400/91 3-part relish \$25. Rosepoint: #3500/161 low ftd. 8" plate \$25; #3500/139 Honey dish, bottom only \$60; #3400/7 cheese compote \$35. UPS extra. Robert Taylor, 80 Middle St., Apt. 21, Gloucester, MA 01930. Phone: 508/281-4637.

WANTED: Carmen Cut Wild Rose punch bowl. Need bowl only! G. G. George, 1102 W. Palm Lane, Phoenix, AZ 85007. 602/252-3151.

FOR SALE: Book "Cambridge Rose Point" w/price guide, by Mark A. Nye. \$12.95. Add \$1 S&H & Ohio residents 78¢ tax. Send order to: Books, National Cambridge Collectors, Inc., P. O. Box 416, Cambridge, OH 43725.

NOTE: Welker's are reprinting their Catalog Reprints Book I & II. The new price is \$10 ea.

NATIONAL CAMBRIDGE COLLECTORS, INC.

FLEA MARKET

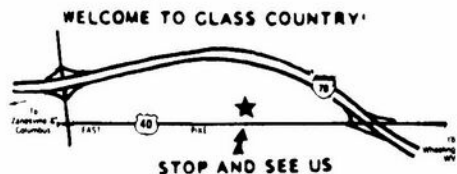
SATURDAY - JUNE 23, 1990
6 am - 12 noon

BUCKEYE TRAIL HIGH SCHOOL
In the heart of downtown Old Washington

For contract or additional information
write to:

Flea Market Chairmen
Marlene & Harold Snyder
P.O. Box 416
Cambridge, OH 43725
Phone: 614/432-6794.

Stage Coach Antique Mall



RT. 40 ONE-HALF MILE WEST OF I-70 EXIT #164
MANY DEALERS - WIDE SELECTION - PLENTY PARKING

WE FEATURE GLASSWARE OF:
CAMBRIDGE, HEISEY, FENTON, & FOSTORIA
Plus Art Pottery & a General line of Antiques

DORIS AND ROY ISAACS
BUY AND SELL
614-872-3720



7525 EAST PIKE
NORWICH, OHIO 43767

MON THRU SAT 10-5:30 SUN 12-5:30
SUMMER EVENING HOURS BY CHANCE

L. A. MANESS

RT. 1, BOX 552, ASHLAND, VA 23005
(804) 798-1825

C = MARKED P & I \$3 CTN.

Farberware Set including metal tray, amethyst shakers w/crys. hdles. & pair of amethyst cruets w/crystal stoppers.....	\$ 75
Chantilly #495 duo candlestix, pr.	60
Decagon 8-3/8" plate, willow blue (6) each C.....	10
Pristine A.D. cup/saucer w/#725 etch (6) set.....	18
Round #138 cream or sugar, etched, pink C.....	25
#3900/22 Diane etch, 8" plates (6) each.....	10
#3900/120 Carnation, 5-part relish.....	45
Caprice crystal w/silver Decoration Bowls, 8 1/2" and 9 1/2", handled & footed, each.....	25

VISA/MASTERCARD WELCOME

H & R Antique Center



1063 Pike Street
Etna, Ohio 43018

(614) 927-4053

Off I-70 Exit 118, 1/2 mile north
to Pike St., turn left

April thru September: Daily 10-5
October thru March: Wednesday thru Sunday 10-5
Dealer Space Available

SPRINGFIELD

Antique Show & Flea Market

Clark County Fairgrounds

SPRINGFIELD, OH

Exit 59 on I-70

400-800 DEALERS
INSIDE AND OUTSIDE

Ohio's largest year round show with an
emphasis on quality antiques

9:00 AM - 5:00 PM

Admission \$1.00

Children under 12 FREE

NEXT SHOW

JUNE 16 & 17, 1990

1990 SHOW DATES

AUGUST	18-19	Inside & Outside
SEPT.	14-15-16	Extravaganza
OCT.	20-21	Inside & Outside
NOV.	17-18	Inside

BRUCE KNIGHT, MGR.

For Information Write
P.O. Box 2429, Springfield, OH 45501
Phone (513) 325-0053

The DAZE

***SPECIAL OFFER**
to NCC friends \$2. off
the 1 year subscription
price when on this form
or copy of.

The Original National monthly newspaper dedicated to the buying, selling & collecting of colored glassware and china including Depression Glass and the Elegant Glass (Cambridge, Heisey, Fostoria, etc.) We educate and inform you each month with feature articles by top notch columnists, readers "finds", club happenings, show news and a multitude of ads. Find those missing pieces to your 30s, 40s or 50s pattern. Can't identify it? Perhaps we can help "Keep up with what's happening with a subscription to the DAZE. Buy, sell or trade from the convenience of your easy chair.

Name _____ Street _____

City _____ State _____ Zip _____

1 yr \$17 2 yrs \$33 \$2. Single Current Copy

Exp date _____ Card No. _____

Signature _____

Orders to D.G.D., Box 57NC, Otisville, MI 48463

Please allow 30 days for your first issue - Canadian subscribers, add \$1.
per year and subscribe by charge card only! This Special Offer may not be
combined with any other special offer.

COLUMBUS ANTIQUE FLEA MARKET (ANTIQUES & COLLECTIBLES)

Ohio State Fairgrounds - Lausche Building
Off I-71 Exit 17th Avenue - Columbus, Ohio

JUNE 24th

Sunday Only - 7 A M to 4 P M

Show Admission \$1 50 - Under 12 Free

150 QUALITY DEALERS

SELLING Advertising Art Deco, books, Cambridge, clocks, coins, collectibles, Depression glass, dolls, Fiesta, fine early furniture, Heisey, jewelry, lamps, oak furniture, post cards, pottery, good primitives, tools and print shop items



4214 North High Street, Columbus, Ohio 43214
(614) 267-8163 (614) 263-6830 (614) 885-2352

NEXT SHOW: September 9, 1990

ROBERT W. RILEY

P.O. Box 4180, Springfield, MA 01101
 Phone: 413/737-0884
 8 pm to midnight EST

Postage & Insurance Extra

Crystal

#3500/47 5" bon bon E/Rosepoint w/gold border.....	\$ 35
#3121 5-3/8" blown candy box w/cover, E/Rosepoint w/minor nicks inside rim of box.....	80
#3900/67 5" candlesticks, pair.....	25
Pristine #286 salad dressing set w/1 ladle.....	15
#3500/113 tray.....	20
#3500/148 6" comport E/Wild Flower w/gold border.....	45
#1402/66 6" high ftd. mint w/gold ring decoration.....	22
#1402/99 7" hdld. plate w/gold ring decoration.....	15

AMBER

Mt. Vernon #102 2-hdld. salt.....	\$ 25
Farber cocktail set.....	80
Farber 7½" comport.....	30
#1297 11" vase E/Gloria.....	100

LIGHT EMERALD

#509 Two-Kids flower holder.....	\$ 175
#300 6" candy box E/725.....	50
#732 Refectory bowl.....	35
Heirloom 12½" plate.....	15

EMERALD

Heirloom 9½" urn.....	\$ 60
#3500/113 tray.....	40

MISCELLANEOUS

Moonlight blue 8½" Draped Lady.....	\$ 200
Ritz Blue Decagon #1076 cream and sugar.....	45
Carmen #1701 9" top hat.....	100
Carmen #3500 cocktails, set of 5...	100
Carmen #3500 5 oz. ftd. tumblers, set of 6.....	120
Amethyst Nude cocktail.....	70
Royal blue #1238 12" vase.....	75
Pistachio #1506/4 plate shaped basket.....	32
Smoke #1956/1 10" ashtray.....	35
Milk #105 9" 3-toed bowl.....	75
Pink Mt. Vernon #102 2-hdld. salt..	25
Ebon Cambridge Square cig. urn.....	20
Crown tuscan #3500/54 6½" 2-hdld. low comport w/gold border.....	40
Mandarin gold 2½ oz. Georgian tumbler.....	15



SIXTEENTH ANNUAL CONVENTION SHOW AND SALE

TULSA, OKLAHOMA
 TULSA CONVENTION CENTER
 (7th St. & Houston Ave. in Downtown Tulsa)

JULY 14 & 15, 1990

Sat. 10 a.m. to 5 p.m. Sun. 11 a.m. to 5 p.m.
 Admission: \$2.50 (good both days)

Top quality dealers from across the United States present an outstanding display of Depression Era Glassware including Cambridge, Imperial, Heisey, Fenton & Fostoria; china; pottery and related items of the era.

DISPLAYS! SLIDE PROGRAMS! SEMINARS!

SPECIAL GUESTS! DOOR PRIZES!

Information: (918) 747-4164

Art & Shirley Moore
 2161 South Owasso Place
 Tulsa, Oklahoma 74114

PUBLIC WELCOME!

The National Duncan Glass Society

15th Annual Duncan Convention
 Show, Sale and Auction

Hand-House Glass of America

Auction — July 20 6:30 P.M.

Show — July 21 & 22 11:00 A.M. to 5:00 P.M.

Holiday Inn Meadowlands, Washington, PA
 I-79 N. of Washington, PA, Racetrack Rd. Exit

Guest Lecturers: Fred Bickenheuser - George Fogg

Frank Maloney



ADMISSION: \$2.50

For Information Call: 222-6376

TENTH ANNIVERSARY
1980-1990

Fostoria Glass Society

Convention
Show & Sale
of Fostoria & other fine Glassware

Delf Norona Museum
Eighth Street & Jefferson Avenue
Moundsville, West Virginia

FRIDAY, JUNE 8 -- 6:00-9:00 P.M.
Premier Admission \$4.00

SATURDAY, JUNE 9 -- 11:00-5:00 P.M.
Annual Meeting - 9:00 A.M.

AUCTION - 6:00 P.M.

SUNDAY, JUNE 10 -- 11:00-4:00 P.M.
General Admission - \$2.00
(Good for Sat. & Sun.)

Lectures Identifications Films
Books Souvenirs Catalogs

FLEA MARKET

For information call (817) 645-6066
Write: P.O. Box 826, Moundsville, WV 26041



14th ANNUAL NATIONAL IMPERIAL GLASS COLLECTORS' SOCIETY CONVENTION

Stone Crab/Hospitality Inn
St. Clairsville, Ohio

SHOW & SALE

Saturday, June 9 1:00 p.m. to 5:00 p.m.

Sunday, June 10 12:00 noon to 4:00 p.m.

Donation

SEMINAR IMPERIAL THE EARLY YEARS

Speakers: Doug Archer and Richard Ross
Saturday, June 9 11:00 a.m. to 12:00 p.m.
OPEN TO PUBLIC - FREE ADMISSION

FOR INFORMATION, WRITE:
National Imperial Glass Collectors' Society
P.O. Box 534 - Bellaire, OH 43906
or Phone (614) 676-2422 - (614) 676-9827



Old Morgantown Glass Collectors' Guild

FIRST
ANNUAL CONVENTION

and
GLASS DISPLAY

June 19-21, 1990

ERICKSON ALUMNI CENTER
West Virginia University Campus
Morgantown, West Virginia

+++

Join us for the 3-day
MID-WEEK ACTIVITIES!

Convention Schedule/Fees and
Motels/Rates will be forwarded by
sending SASE to the address below--

Mrs. L. Biever
Apt. 615 - OMCGG
211 - 2nd Street N.W.
Rochester MN 55901

HEISEY MORGANTOWN CAMBRIDGE
June 14-17 JUNE 19-21 June 22-24



1990

20th Annual Antique Show & Sale Heisey Glass Display

19th ANNUAL CONVENTION
OSUN-COTC Newark Campus
Country Club Drive, Newark, Ohio

Friday June 15 12:00 p.m. to 6:00 p.m.

Saturday, June 16 11:00 a.m. to 5:00 p.m.

Sunday, June 17 12:00 p.m. to 5:00 p.m.

(DISPLAY CLOSES AT 4:00 P.M. ON SUNDAY)

Donation \$2.50

Plenty of Free Parking

GALA PREVIEW THURSDAY, JUNE 14, 1990

Donation \$10.00 Includes Meal

Dinner 5:00 p.m. to 7:00 p.m.

Show 6:00 to 9:00 p.m. Display 7:00 p.m. to 9:00 p.m.

sponsored by

Heisey Collectors of America, Inc.

Benefit National Heisey Glass Museum

FLEA MARKET ON THE SQUARE

SPONSORED BY BUCKEYE STUDY CLUB

Saturday, June 9

Saturday, June 16

Sunday, June 10

Sunday, June 17

Dawn to ???

FOR INFORMATION CALL 614-345-2932

DEALERS



DIRECTORY

NOTE: When writing to the Dealers listed here, please enclose a SASE!

<p><i>YOU CAN ADVERTISE YOUR ANTIQUE SHOP HERE!</i></p>	<p>BENICIA ANTIQUE SHOP 305 First Street Benicia, California 94510</p> <p>OPEN 11 AM - 5 PM Closed Monday</p> <p>Z. E. LOPES 707-745-0978</p>	<p>THE MUTED SWAN ANTIQUES 5486 Peachtree Rd. Chamblee, GA 30341 Heart of Chamblee Antique Row</p> <p>Specializing in Cambridge, Heisey and Fostoria Bill & Pat Miller 404-451-7620</p>
<p>SANDY'S ANTIQUE MALL 617 Wheeling Ave. Cambridge, OH 43725 Phone 614/432-2570</p> <p>COLLECTOR'S ITEMS Summer 9 - 6 Daily * Winter 9 - 4:30 Mon - Sat</p>	<p>VISIT HISTORIC BENICIA and its 28 shops</p> <p>Off Interstate #80 North of San Francisco</p>	<p>Elegant Depression Era Glassware</p> <p>ABBA ANTIQUES 1157 Charlie Lane Lilburn, GA 30247</p> <p>Bill & Barbara Adt (404) 279-1942 Shows, Mail Order, & by Appointment</p>
<p>THE GLASS URN 456 West Main Street, Suite G. Mesa, AZ 85201 602 / 833-2702</p> <p>Mail Order Shows Open Shop CAMBRIDGE, FOSTORIA, HEISEY, ETC.</p>	<p>ANTIQUES ON THE MALL SPECIALIZING IN CAMBRIDGE GLASS</p> <p>Stagecoach Mall - Bldg. 3 - Norwich, OH Virginia Bennett 614/432-4483 64183 Warne Drive, Cambridge, OH 43725</p>	<p>BERKELEY ANTIQUES 69 Berkeley St., Boston, MA 02116</p> <p>OPEN: Monday thru Saturday 11 AM to 5 PM GEORGE & FRANK 617/426-1048 DUNCAN, CAMBRIDGE, HEISEY, GENERAL LINE</p>
<p>ETTELMAN'S DISCONTINUED CHINA & CRYSTAL Cambridge a Specialty</p> <p>P.O. Box 6491-CB Corpus Christi, TX 78466 Phone (512) 888-8391 Include S.A.S.E.</p>	<p>D & D ANTIQUES Columbus, Ohio</p> <p>DICK SLIFKO SHOWS ONLY</p>	<p>BUYING COLORED CAMBRIDGE GLASS (Send List with Prices)</p> <p>FEDERAL HILL ANTIQUES 78 Maple Street Bristol, CT 06010</p>
<p>THE GLASS CUPBOARD 39 Shire Oaks Drive Pittsford, New York 14534</p> <p>Marcia Ellis Cambridge, Duncan Miller (716) 586-7596 Shows, Mail Order, Appt.</p>	<p>JUDY'S ANTIQUES Judy Bennett 422 S. Ninth Street (Corner of Jefferson) Cambridge, Ohio 43725</p> <p>BUYING Ph. 614-432-5855 SELLING Cambridge Glass my Specialty</p>	<p>"HAPPINESS IS" The Stultzs 3106 Warren Court Glen Allen, VA 23060</p> <p>SHOWS & MAIL 804-672-8102 (RICHMOND AREA) AMERICAN MADE GLASS CIRCA 1890-1960</p>
<p>"Days of Future Passed" 4 Newbrook Lane, Bayshore, L.I., NY 11706</p> <p>LYNN DEZMAIN (516) 665-3890 Cambridge, Elegant Glass, D. G., Collectibles</p>	<p>GREEN ACRES FARM 2678 Hazelton Etna Rd., Pataskala, OH 43062 (State Route 310 North)</p> <p>Sat. & Sun. 1-7 PM 614/927-1882 Antiques, Crystal Glass and Collectibles</p>	<p>COSHOCTON ANTIQUE CENTER 309 South 4th Street Coshocton, Ohio</p> <p>25+ Dealers - Open 10 - 6 (Closed Mon. Winter) Glass Restoration & Chair Caning 614 622-3223</p>
<p>THE HITCHING POST 7467 S. R. 88 Ravenna, OH 44266</p> <p>Ph. 216-296-3686 D. McDaniel CAMBRIDGE — HEISEY — GENERAL LINE</p>	<p>PATCHES OF VIRGINIA Specializing in China and Glass Virginia T. Houston</p> <p>34116 Roberts Rd., Eastlake, OH 44095 Phone: (216) 975-8315</p>	<p>CRYSTAL LADY 1819 Vinton St., Omaha, NE 68108</p> <p>Joann D. Hagerty Bus. (402) 341-0643 Res. (402) 391-6730 Specializing in Elegant Glass & Collectables</p>
<p>JOHN C. WOLFE, JR. Visual Display, Suite S 592 E. Main St., Columbus, OH 43215</p> <p>CAMBRIDGE, A SPECIALTY VINTAGE WRISTWATCHES</p>	<p>REMEMBRANCES 7597 Daphne Dr., No. Syracuse, NY 13212</p> <p>Shirley S. Ladouceur 315 / 458-5297 ANTIQUES and COLLECTIBLES MAIL ORDER SHOWS APPOINTMENTS</p>	<p>MARGARET LANE ANTIQUES 2 E. Main St., New Concord, OH 43762 Lynn Welker 614/826-4418</p> <p>CAMBRIDGE GLASS MATCHING SERVICE Hours Mon.-Fri. 1-5 PM or by Appointment</p>
<p>GLASS RESTORATION</p> <p>BRILLIANT CRYSTAL ELEGANT DEPRESSION</p> <p>DON & LYNNE WORMLAND MT. CLEMENS, MICH. (313) 791-9191</p>	<p>WATKINS (Fine Quality) CAMBRIDGE GLASS SHOP 1429 Marquand Ave. (Corner of Woodlawn) Cambridge, OH (614) 432-4460 Lana Watkins</p>	<p>BUD'S TRADING POST GENERAL STORE — FLEA MARKET 501 Wheeling Ave. Cambridge, OH 43725 10-5 Mon. thru Sat. 614-432-4688</p> <p>CAMBRIDGE - PATTERN - ART GLASS This Bud's for Y'all</p>

Welcome To
CAMBRIDGE

15th Annual
NATIONAL
CAMBRIDGE
COLLECTORS

ANTIQUE SHOW & SALE
(& 17th Annual NCC Convention)

SHENANDOAH INN
INTERSTATE 70 -- EXIT 186 -- 7 MILES EAST OF
CAMBRIDGE, OHIO

Shenandoah Inn
P.O. Box 147, Old Washington, Ohio 43768
Phone - 614-489-5511

Mention NCC when making reservations

June 21 - 24, 1990

**VISIT YOUR MUSEUM
of
CAMBRIDGE GLASS**



Special
Announcement

MUSEUM HOURS EXTENDED
Convention Week

June 18 - 24

The N.C.C. Museum will be open
every day during Convention week.

HOURS: 10 am to 4 pm

Be sure to visit the Storage Building
while you are there. The molds, etching
plates, etc., are on display.

JUNE 1990

Flower — Rose • Birthstone — Pearl

HAPPY FATHER'S DAY

National Cambridge Collectors, Inc.
P. O. Box 416 Cambridge, Ohio 43726

FIRST CLASS MAIL
U.S. POSTAGE
PAID
So. Vienna, Ohio
45369
Permit No. 15

FIRST CLASS MAIL

Membership Renewal Notice

This is your **last** issue of the *Crystal Ball*—if the
date on your address label reads 6-90.

Please renew now!