



Cambridge Crystal Ball

Published monthly by the National Cambridge Collectors, Inc.
to encourage and report the discovery of the elegant and boundless product
of the Cambridge Glass Company of Cambridge, Ohio

Issue No. 212

December 1990



CHRISTMAS GREETINGS
May every moment of today
Be bright with Christmas cheer,
And peace and joy attend your way
Throughout the coming year.

From your
Officers, Board of Directors
and
CRYSTAL BALL Staff



(This Christmas Greeting is shared with us by our President Mark Nye.
It is reprinted from a Christmas card sent to his parents in 1927.)

Cambridge Crystal Ball

Official publication of National Cambridge Collectors, Inc., a non-profit corporation with tax exempt status. Published once a month for the benefit of its members.

Membership is available for individual members at \$15 per year and additional members (12 years of age and residing in household) at \$3 each. All members have voting rights, but only one *Crystal Ball* will be mailed per household.

Back issues of the *Crystal Ball* are available (beginning with Issue No. 1, May 1973) for members only. Cost: \$1.00 each or 12 issues for \$10.00.

1990-91 Officers & Committee Chairpersons

President	Mark A. Nye
Vice-President	Cynthia A. Arent
Secretary	J. D. Hanes
Treasurer	William C. Smith
Sergeant-at-Arms	Judy Momirov
Acquisition	Joy McFadden
Budget & Finance	David B. Rankin
By-Laws	J. D. Hanes
Membership	Phyllis D. Smith
Museum—Facilities	Dovle Hanes
Museum—Interior	
Non-Glass Items	J. D. Hanes
Nominating	Willard P. Kolb
Program	Cynthia A. Arent
Project	R. Clarke West
Public Relations	Bill & Phyllis Smith
Publicity	Cynthia A. Arent
Study Group Advisor	Judy Momirov
1991 Auction	Lynn M. Welker
1991 Antique Show	Joy R. McFadden, Mary Beth Hackett
1991 Convention	Marvella Moorehead
1991 Flea Market	Marlene Snyder
Crystal Ball Editor	Phyllis D. Smith

Classified Advertising Rates

10 cents per word \$2.00 minimum
We cannot mix type size in classified advertisements. Abbreviations and initials will count as words. Payment in full must accompany all ads.

Display Advertising Rates

(Camera ready ads preferred)	Members	Non-Members
1/8 page	\$ 6.00	\$10.00
1/4 page	10.00	15.00
1/2 page	18.00	25.00
3/4 page	25.00	35.00
Full page	33.00	45.00

Dealers Directory

Five-line maximum \$18.00 for 12 months

Cambridge *Crystal Ball* assumes no responsibility for items advertised and will not be responsible for errors in price, description or other information.

Advertising copy, articles, club news and notices must be in our hands by the 10th of each month to assure publication in our next issue.

Paid advertisements containing reproductions or new glass will not knowingly be accepted for publication.

Opinions or information stated in any signed article or letter printed in the *Crystal Ball* are those of the authors and may or may not agree with National Cambridge Collectors, Inc. The Editor reserves the right to refuse and to edit any material submitted for publication so as to conform with the editorial style of the *Crystal Ball*.

Please Address All Correspondence to:

National Cambridge Collectors, Inc.
P.O. Box 416 Cambridge, Ohio 43725
President — Mark A. Nye, 305/221-0343
Secretary — J.D. Hanes, 614/432-6794
Editor — Phyllis Smith, 513/323-3888

Please notify us immediately of any change in your address.

Please enclose an SASE when requesting information.

CAMBRIDGE GLASS BOOKS FOR SALE

by National Cambridge Collectors, Inc.

* **COLORS IN CAMBRIDGE GLASS**
(128 pages - 60 color plates - fully indexed)
Hardbound with Price Guide \$19.95

* **1930-34 CAMBRIDGE GLASS CO. CATALOG REPRINT**
(250 page reprint of original catalog)
Paperback with Price Guide \$14.95

* **1949-53 CAMBRIDGE GLASS CO. CATALOG REPRINT**
(300 page reprint of original catalog)
Paperback with Price Guide \$14.95

* **1956-58 CAMBRIDGE GLASS CO. CATALOG REPRINT**
(164 page reprint of original catalog)
Paperback \$6.95

1985 COMBINED PRICE GUIDE
for 1930-34 & 1949-53 catalog reprints Postpaid \$5.75

*NCC MEMBERS ONLY: These publications are available at 10% discount

by Bill & Phyllis Smith

CAMBRIDGE GLASS 1927-1929
(66 page reprint of original catalog)
Paperback with Identification Guide \$7.95

by Cambridge Buffs Study Group

NEARCUT
(108 page reprint of 1910 Cambridge Catalog)
Paperback with Price Guide \$9.95

by Mary, Lyle and Lynn Welker

CAMBRIDGE GLASS CO.
(120 pages of reprint from 8 old catalogs)
Paperback \$10.00

CAMBRIDGE, OHIO GLASS IN COLOR II
Spiralbound \$5.95

by Harold and Judy Bennett

1903 CAMBRIDGE GLASS CO. CATALOG REPRINT
(106 page reprint of an original catalog)
Paperback \$7.50

Address your orders to:

BOOKS
National Cambridge Collectors, Inc.
P.O. Box 416
Cambridge, OH 43725

Please add \$1.00 (P & I) per order.
(Not required for Price Guide)
Ohio residents please add 6% state sales tax.

DEALER DISCOUNTS AVAILABLE - PLEASE WRITE!

Season's Greetings

From the President's Desk

TRADITION! What would the Christmas Season, or for that matter any Holiday Season, be without tradition. And what is tradition but years of celebrating in the same manner; thus making an occasion an event to remember, one to look forward to celebrating again and again. In other words, you do reap what you sow when it comes to traditions.

Nothing just happens. Years of family gatherings create a celebration that is looked forward to for months. Young couples or singles, separated from their families by countless miles and unable to return, must strive to start their own traditions and means of celebrating; be it Christmas or any other religious or secular holiday. If you don't, holidays can be sad and lonely times.

Home for the Holidays is the dream of many. The following paragraphs taken from "The Southern Heritage Family Gatherings Cookbook" explains it quite nicely.

"There is no doubt about it: the homing instinct peaks at holiday time. The college freshman, away for the longest time in her (or his) young life, the careerist working several states away, the aunt alone who needs including -- they come home Thanksgiving, the Christmas and New Year's holidays, and Easter are for drawing in, the family gaining strength by sharing the happenings and ideas that are constantly shaping their lives. What does not change is the warm and caring atmosphere of the Southern home place.

Heading home for the Holidays may entail weeks or months of planning: vacation time is hoarded, along with the wherewithal to finance the trip. In colonial days going home was as simple as hitching horse to carriage for a few miles overland."

If you can't go home, and many cannot, make your own "home" and share the Holidays with friends and whatever family is possible. It does not take long until your own traditions become firmly rooted and looked forward to each year.

Holidays are time for remembering Holidays Past, back to times of youth and young adulthood. Do not be sad, for these are fond memories even though many in your thoughts are no longer here to partake of the festivities. I sometimes shed a small tear as I think of Christmas Past; it is wiped away and then on to Christmas Present and Future.

This is the time of year to think of others. Part of many traditions is to share what you have with others less fortunate; and in doing so, bring a little cheer and pleasure into the lives of those who, without our help, may not be able to provide for their needs or those of their families. Do not forget this: it doesn't matter what you share with others, big or little, great or small, what counts is you are sharing what you are capable of, and if we all do this, no one will be without.

We may not all celebrate the same holidays, or in the same manner, but we can walk side by side as we go to our respective gathering places. To each and every one, I say

Merry Christmas, Happy Hanukkah,
Happy Holidays!

Mark





CORINTH

*... classic beauty forever yours
in this gracious new crystal*

There is a *timeless quality* about Corinth. You can see it in the clean, graceful lines and perfect proportions of the design ... in the matchless, rich brilliance of the crystal itself ... in the dainty yet sturdy appearance of every piece. Truly a supreme achievement in fine glassmaking, Corinth is priced with in reach of most of your customers. Stock—*sell* Corinth ... *now!*

The Cambridge Glass Company
Cambridge, Ohio



(This advertisement was used in the December 1949 issue of "China, Glass & Lamps.")

December Ads - Cambridge Glass Co.

by MARK A. NYE

The December 1949 issue of "China, Glass and Lamps" contained this brief article dealing with Cambridge.

"A line of tableware pieces including bowls, chop plates, console sets, sugars and creamers, and double mayonnaise bowls in the beautiful 'Harvest' cutting has been brought out by Cambridge Glass Company to match the stemware line in this pattern. Stalks of wheat, gray, in a polished cutting, this distinctive design was introduced a couple of years ago in stemware only. The popular 'Crown Tuscan' cocktail glasses with the graceful coral figure holding the mandarin gold bowl are now back again to retail at \$1.50 apiece.

Cambridge also has two new package deals on the Cambridge Arms centerpieces. These versatile centerpieces come in nine-piece and 11-piece sets retailing at \$10.95 and \$13.95 respectively, already packed in shipping cartons to eliminate need for repacking. A surprising total of 43 different combinations has been worked out with these simple interchangeable pieces, and a book picturing quite a few of the suggested decorative arrangements is available.

Like Topsy, this centerpiece idea 'just grew.' Originally the candelabra was made with a finial instead of a well, until one day someone looked at a stack of them in the factory and began to realize what flexibility of design might be achieved with a group of moveable, interchangeable pieces. At first, too, the vases were made of blown glass, but the breakage on these proved so large that they were soon supplanted by pressed glass."

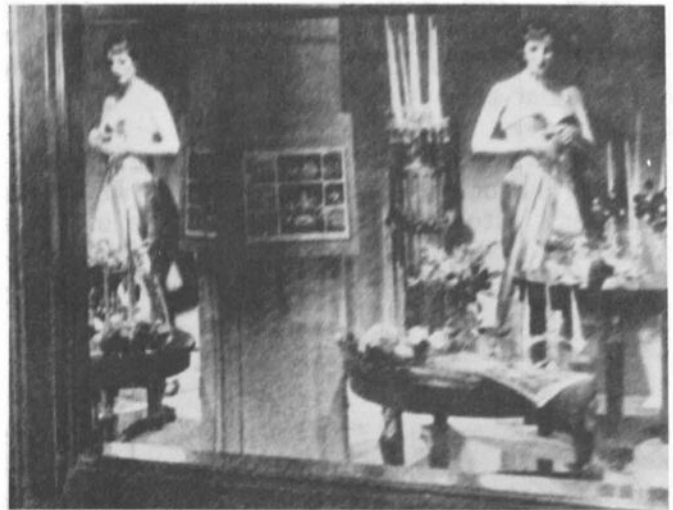
The following is taken from the December, 1950 issue of "China, Glass and Lamps."

"Promoting "Combination" Glassware

A major highlight in current glassware merchandising developed recently with the nation-wide promotion of the 'Cambridge Arms' line, launched through the November

issue of the Woman's Home Companion to 4,500,000 readers and tied in with 337 stores in 45 states.

Featured in the Picture Companion section of the magazine was a four page spread entitled 'Sparkling Switchabouts,' illustrating the line of decorative glassware by Cambridge which is derived from a number of basic items such as a bowl, candlesticks, vase arm and others. These may be combined into innumerable arrangements to suit practically every decorative requirement of the table or living room." (Editor's Note: This four page spread was reprinted in C.B. Issue #149 - Sept. '85.)



"Excellent results were reported by Dorothy Durkin of Lord and Taylor, New York, with tie-in promotion using windows like this featuring 'Cambridge Arms' glass. With the store calling it 'Arrangements Unlimited,' the line is illustrated in editorial pages from Woman's Home Companion.

Major appeal derived from the attractiveness of the ware and low retail prices for each item ranging from \$1 to \$3.95. Actually sales possibilities are enlarged because of the varied combinations which can be developed to require a bigger purchase. Stores participating in the promotion have to date reported generally excellent results.

The November issue marks the first appearance of tableware in the magazine's Picture Companion section. Normally this department concentrates on such topics as clothing fashions. In addition, the section featuring Cambridge was larger than usual. In other respects the development of the Cambridge project followed a standard policy established by the magazine.

continued on next page

NYE ARTICLE....continued from previous page

Merchandise featured in the Picture Companion is selected from available lines entirely on an editorial basis. The Cambridge ware was chosen for its qualities of interest, attractiveness, gift character and exclusiveness. These factors, together with the price, were deemed ideal for the Thanksgiving and Christmas season.

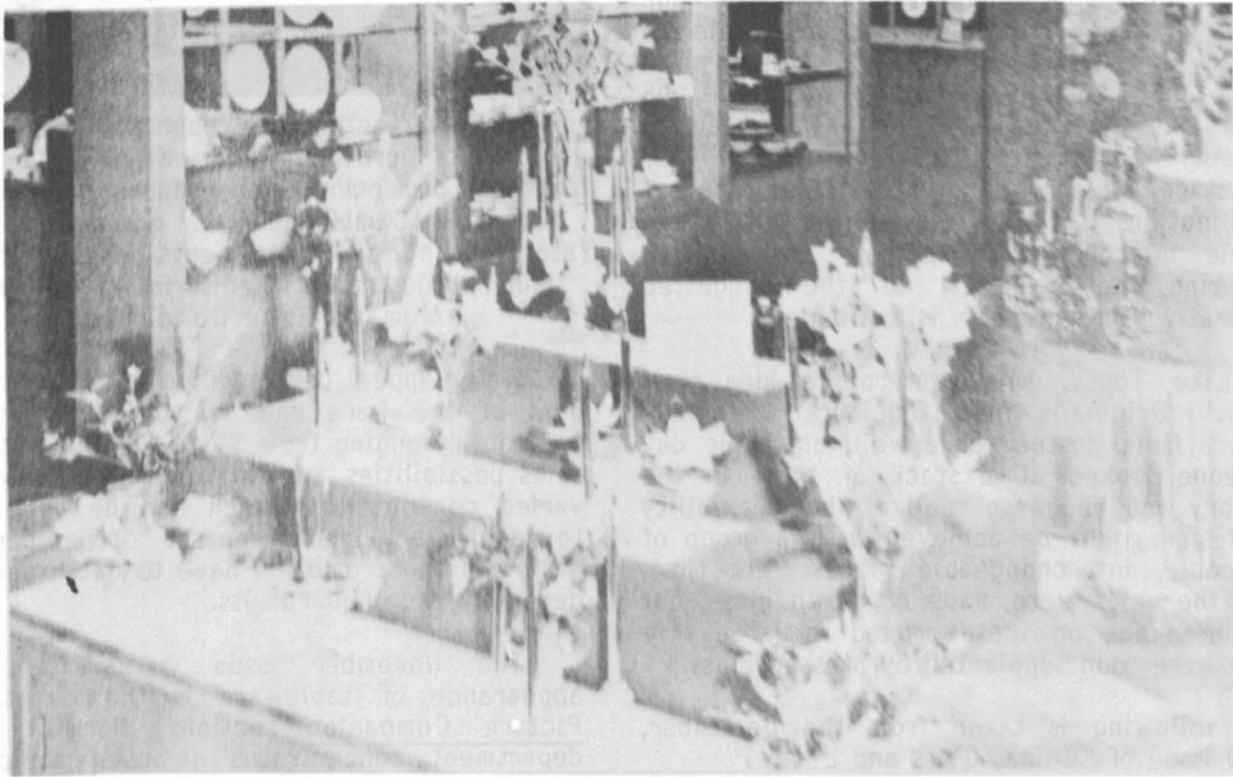
These same factors, of course, should make 'Cambridge Arms' an equally good choice for personal gift occasions in the future and spring gift occasions such as Easter. The magazine's promotional set up also is flexible and is potentially available on other occasions to stores not included in the particular promotion.

With each promotion, the magazine carries a list of participating stores to which the reader's attention is directed. Each of these has the featured merchandise exclusively in a given retailing area. Stores involved in Com-

panion promotions vary, because the magazine's staff gauges each promotion to determine what stores are best suited to the merchandise involved. Hence, the retail outlets are not always department stores, but often include specialty shops, jewelry stores and others.

In this case, the 337 outlets included Lord & Taylor and Loeser's in New York; Kresge's in Newark; Carson Pirie Scott, Chicago; Miller & Rhoads, Richmond Va.; and LaSalle's, Toledo.

The editorial article itself was developed with the assistance of the Cambridge New York representative, Gene Henn, who aided the magazine's merchandising department head, Miss Minki Hart. After the story was written, the project was turned over to Miss Hart, who, with Mr. Henn, worked directly with stores in the New York area. The majority of the other stores involved was handled by mail."



"At Carson Pirie Scott, Chicago, this island displays features direct tie-in with national publicity through magazine articles describing ware as 'Sparkling Switchabouts.' The store, one of 337 linked to the promotion, has obtained good results in emphasizing attractive price, versatility and exclusiveness."

**on
the**

■ . . . Cambridge will present at the Pittsburgh China & Glass Show one of the most distinctive new crystal shapes ever created by American glassmakers. It is a pattern aloof from the conventional—an ultra-smart, imaginative design brilliant with the beauty of flawless crystal and astir with the mood of the times.

■ You are cordially invited to see this exciting new pattern at rooms 101-103 in the William Penn Hotel. On the square . . . we believe you'll like it!

square

THE CAMBRIDGE GLASS COMPANY
Cambridge, Ohio

Also on display at our showrooms in New York and Chicago. Visit us during the February Gift Shows!



(This advertisement was used in the December 1951 issue of "China, Glass & Lamps.")

Club News

National Cambridge Collectors, Inc.
Quarterly Meeting
November 3, 1990
Holiday Inn, Cambridge, Ohio

The regular meeting was called to order at 7:59 p.m. by President Nye. In attendance were 10 Board members and 33 club members.

A motion was made by David Rankin to dispense with the reading of the minutes of the previous meeting since they are published in the CRYSTAL BALL. Motion carried.

The treasurer's report was given by J. D. Hanes in the absence of Bill Smith. As of September 30, 1990 the balance in the Money Market account was \$22,108.48 and in the Checking account \$17,730.19, for a total in cash of \$39,838.67.

J. D. also reported that we had received an exemption on our real estate taxes and that Bill estimated that this would save the club approximately \$1,000 per year.

COMMITTEE REPORTS

ACQUISITIONS: Chairman Joy McFadden stated that they will be making some purchases for the Museum.

Mark Nye stated that if anyone saw anything that might be of interest to the committee to please contact them.

BUDGET & FINANCE: No report.

MEMBERSHIP: J. D. Hanes reported in the absence of Phyllis Smith. As of October 31, 1990 we had 991 Individual members, 371 Associate and 7 Honorary for a total of 1,369.

MUSEUM FACILITIES: No report.

NON-GLASS ITEMS: J. D. Hanes reported that they had cleaned 10 boxes of moulds at the last work party. He thanked all those who had helped. He stated that he would be working on a schedule for 1991 and would have it published in the CRYSTAL BALL.

NOMINATING: Mark Nye announced that in accordance with the By-Laws, Willard Kolb

would be the chairman of this committee. He asked for volunteers for this committee.

PROGRAM: No report.

PUBLICATIONS: Mark Nye reported in the absence of Bill Smith. He reported that the 1930-34, the 1949-53 and the Color Book had all been reprinted. He stated that the updated price guides are now bound in the books. As a service to our members, Collector Books had agreed that we could sell copies of the price guides to members only. The cost for these will be \$2 for the Color book and \$3 each for the 1930-34 and 1949-53. These prices do include postage.

Mark then reported that work is still going on for the Caprice book and the rewrite of the Stemware book. Also, the Rosepoint book will be reprinted and will have some additions, which will be shown in the price guide.

PROJECTS: No report.

PUBLIC RELATIONS: J. D. Hanes reported in the absence of Bill and Phyllis Smith. He stated that the Smiths had represented the club at the Western Reserve show, near Cleveland, on October 20 and 21. They had good attendance at the show and had signed up 10 new members and sold approximately \$400 in books and merchandise.

J. D. Then reported that the reason the Smiths were not in attendance was that they are representing the club at the Dearborn, Michigan show. They will be staying there through Monday so that Bill can do a presentation for the Michigan club's meeting.

The Smiths will also be representing the club at the Sparkling Clearwater show in Clearwater, Florida on February 9 and 10, 1991.

J. D. Then stated that if anyone would like membership forms or complimentary copies of the CRYSTAL BALL to hand out at shows, to please drop a line to the club post office box.

Mark Nye reported that he had represented the club at the Medford, Oregon show. Also he had attended the Lakeland, Florida show and did a display and some talking about Cambridge.

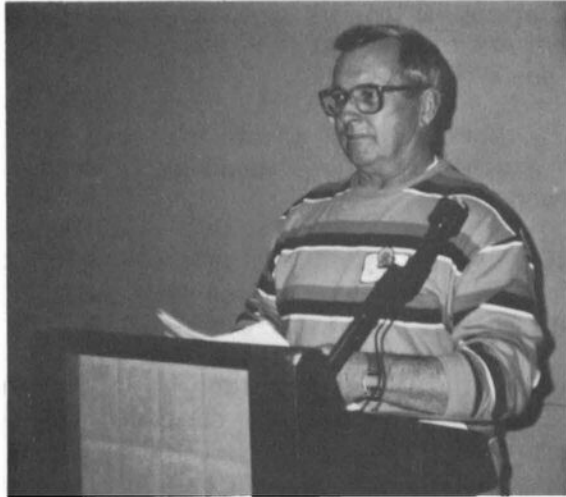
PUBLICITY: No report.

continued on page 10

NOVEMBER QUARTERLY MEETING

by CINDY ARENT

The National Cambridge Collectors held their November Quarterly meeting Saturday evening, November 3rd, at the Holiday Inn, Cambridge, Ohio. Our speaker for the evening was Willard Kolb, NCC Board member and former NCC president.



WILLARD KOLB

Willard is a native of St. Clairsville, Ohio, and a student of the glassmaking industry in the Ohio Valley. His topic for the evening was "Paste Molds - the Miracle of Glassmaking."

Willard presented a slide program discussing several methods of producing blown glassware using various types of molds and processes. In keeping with his topic, he described in depth, the Hokey-Pokey process, which uses a particular type of mold called the paste mold. During the discussion he provided a step by step description of several different processes used by the glass industry to make stemmed glassware. This included a comparison of how the Imperial Glass Company made a Candle-wick goblet, verses how the Cambridge Glass Company made the well known #3011 Nude stem goblet.

During the business meeting it was announced that the National Cambridge Collectors presently have 1,369 members. President Mark Nye informed the membership that Mildred Hughes, longtime NCC Museum employee, has retired, and expressed thanks for her dedicated service to the Museum.

Several Study Groups were also involved in the evenings activities. The Cambridge Buffs

group donated several pieces of Cambridge glass to the NCC Museum. The Cambridge Cordials group conducted a raffle, with Betty Frontz winning a Cambridge glass decanter.



Paul White, Belmont, Ohio, and Lynn Welker, New Concord, Ohio, discuss a piece of glass.

Lynn Welker then identified pieces of glass, brought by members, during the "Show & Tell" portion of the meeting.

Also shown, were the last aerial photographs of the Cambridge Glass plant. Copies of these photographs will be for sale, by the Cambridge Cordials Study Group, sometime in the future.

The next Quarterly Meeting will be held Friday evening, March 1, 1991, at the Shenandoah Inn, Old Washington, Ohio. The Annual All-Cambridge Glass Auction will be held the following day, Saturday, March 2nd, also at the Shenandoah.

(EDITOR'S NOTE: Complete information on the next Quarterly Meeting and the All-Cambridge Glass Auction will be included in your January 1991 issue of the CRYSTAL BALL.

Be sure to add these dates to your calendar!

MARCH 1 & 2, 1991
N.C.C. Quarterly Meeting and
All-Cambridge Glass Auction

JUNE 27 thru 30, 1991
N.C.C. Convention and
Antique Show & Sale

Both events to be held at the Shenandoah Inn, Old Washington, Ohio

CLUB NEWS continued from page 8

STUDY GROUP ADVISORY: Chairman Judy Momirov reported that she is looking into ways to improve communications. Also, if anyone needs help with the group or in forming a group, to please contact her.

AUCTION: Chairman Lynn Welker reported that the Auction will be held March 2, 1991. Letters to consignors are out. He will be working on the catalog so that it can be in the January issue of the CRYSTAL BALL.

1991 SHOW: Co-chairman Mary Beth Hackett stated that they had no real report. However, they could always use volunteers to help with loading and unloading and set-up.

CONVENTION: Chairman Marybelle Moorehead reported that the theme will be Candlesticks. She is working on getting all of her committees together.

FLEA MARKET: Mark Nye reported that Harold and Marlene Snyder will be chairmen again this year and they are working on it.

MUSEUM INTERIOR: Mark Nye reported that the Museum is closed for the year. He also reported that our longtime worker, Midge Hughes, had decided to retire.

CRYSTAL BALL: J. D. Hanes reported in the absence of Phyllis Smith. He reported that as always we are looking for articles and advertising. There are a couple of Dealers Directory spaces available if anyone would like one. He also reported that the Auction list will be in the January issue.

OLD BUSINESS: Mark Nye reported that the Grand Prize in the fund raising drive will be an oval base, pink, Two-Kid flower holder. He stated that approximately 110 people have given the full amount to the drive. He also reported that we have had a problem in getting the Committed to Cambridge awards and asked that everyone be patient, as they will be shipped as soon as we receive them.

J.D. Hanes reported on the Pritchard-Laughlin Civic Center. He stated that they are having some problems and the earliest that we could use it for convention would be 1992.

NEW BUSINESS: Marybelle Moorehead asked for a special Board meeting to follow the Quarterly meeting.

Ron Hufford started discussion on the letter concerning the loss of the glass display at the Smithsonian.

Charles Upton reported on the letter and response that he had received from the Smithsonian. All members were urged to write to the Smithsonian concerning this.

J. D. Hanes reported on the demolition of the glass factory. He stated that he is in negotiations with the contractor on getting some items that are still in the factory, along with some of the bricks.

Regina Gerko asked about the cost of the brick and how much we would get. Discussion followed.

Mark Nye then asked for volunteers for the Nominating committee. Volunteers were Mike Arent, Charles Upton and Clarke West.

A motion to adjourn was made by J. D. Hanes at 8:25 p.m. Motion carried. Meeting adjourned.

"Show & Tell" was conducted by Lynn Welker.

An informative and delightful program was given by Willard Kolb, on "Paste Molds."

J.D. Hanes, Secretary

Study Club News

STUDY GROUP #7 - EASTERN OHIO
"THE CAMBRIDGE BUFFS"
Phone: 614/432-5230

The Cambridge Buffs Study Group held their meeting October 13th in the home of Doris and Roy Isaacs. There were eight members present.

Charles Upton gave a report that the Smithsonian Institute was planning to eliminate the Glass exhibit at the Museum. The Glass Research Society of New Jersey would like groups to help to support keeping the Glassware on display. Mr. Upton wrote a reply to Mr. Roger Kennedy, Director of the Smithsonian. (Editor's Note: Both Mr. Upton

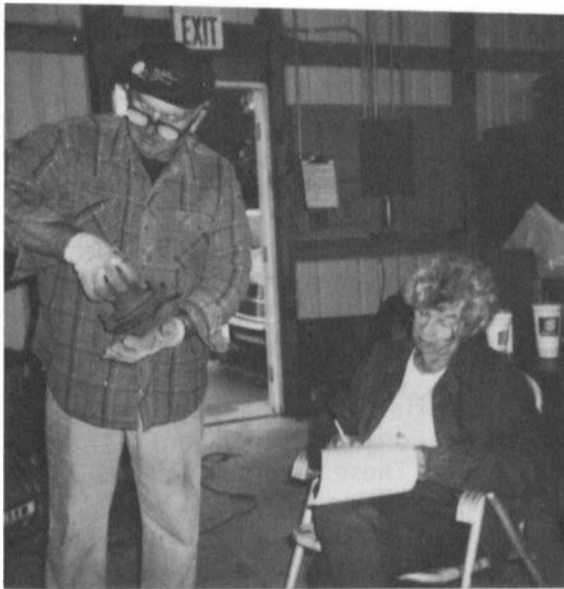
continued on page 12

Mold Cleaning - - Update

by J. D. HANES

The last mould cleaning work party of 1990 was held at the N.C.C. storage building on Saturday, October 13th. I would like to thank, Cindy Arent, Rich Bennett, Doyle Hanes, Don and Betty Frontz, Regina Gerko and her sons Jeff and Mark, and Willard Kolb, for all their help.

We cleaned, at least for identification purposes, 10 boxes of moulds. This was a lot of dust and some bruised fingers will attest.



Betty Frontz records the number of the mould as Don Frontz calls it off to her.

This day brought back memories for Don, as he was a gatherer at the factory.

Some of the moulds we cleaned were: Pristine #746 cigarette box, #693 ash tray, #3078 finger bowl, #3126 finger bowl, #1234 10" vase, 1632 Hurricane, Pristine #91 32 oz. decanter, and the #802 inverted show jar. Some of these are paste moulds and, of course, the numbers and descriptions are taken directly from the moulds.

Regina Gerko along with her sons Jeff and Mark, and Rich Bennett managed to keep busy with brushes, finding numbers. (see photo in next column) Let's hope that the Gerko brothers keep their enthusiasm for glass. Their first question when we finished for the day was, "When can we do this again?"

As an answer to that question, I hope to have a schedule, for 1991 Cleaning Parties, in the February CRYSTAL BALL. We would like to have at least one work party a month, to finish the moulds and then we can start on tools.



Regina, Jeff and Mark Gerko along with Rich Bennett cleaning the old Cambridge moulds.

In closing, let me again say, Thank You to all who helped with this ongoing project in 1990, and may you all have a "Very Merry Christmas and a delightful New Year!"

we get letters

Dear Sir:

I am writing in regard to my husband, Earnest E. Watson. He was a glass blower/gatherer for years at the Cambridge Glass. Started there when he was 14 years old.

He has been very sick and he will be 85 years old on December 14th. He was born December 14, 1905. Would like to get cards from other Glass workers and friends. Address is:

Mr. Earnest E. Watson
7020 Sherrard Road
Cambridge, OH 43725

Yours Truly, Mrs. Earnest Watson

EDITOR'S NOTE: We were sorry to hear that Mr. Watson is ill. Do hope many of you will take the time to send him a birthday card.

STUDY CLUB continued from page 10

and Mr. Kennedy's letters will be reprinted in the January C.B., for your information, if space allows. Lack of space in this issue prohibits us from printing them this month.)

Doris Isaacs presented glassware to be purchased and donated to the N.C.C. Museum. Items included a 4-part relish etched Rosepoint, a Dolphin candlestick, a glass gearshift knob, and a Primrose vase w/ gold decoration.

The group worked on the price guide update for the NearCut book. Next meeting will be October 29th at the home of Deanne and Tom Gray.

The Cambridge Buffs held their October 29th meeting in the home of Tom and Deanne Gray. There were eight members present.

Charles Upton had received a reply to his letter to the Director of the Smithsonian Institute about their glassware display. It seems that they are doing away with the glass displays there. Glass will be displayed elsewhere or loaned out. Their remodeling may take two or three years.

"Show & Tell" items were: 13" #279 crystal vase etched #717 Bird; Georgian basket and handle in gold krystal; and a Marjorie Near Cut water bottle.

The group worked on the NearCut book price guide update. This has been a real hard job, but very interesting. We learn a lot about the glass and the value of it. Doris is a big help.

Next meeting will be held November 11th in the home of Jim and Shirley Douglas.

submitted by Deanne Gray

**STUDY GROUP #11 - ILLINOIS
"THE CAMBRIDGE NUDES"**

The Cambridge Nudes Study Group held their meeting October 20th in the home of Jim and Rose Curnutt. There were 14 members present.

An auction of glass was held with the proceeds being given to the N.C.C. Total amount is \$455. Each member donated a piece of glass worth at least \$25 to be auctioned.

"Show & Tell" consisted of the following: 6½"

amber Caprice vase; 10" vase in peach-blo etched Betty; #1323 royal blue decanter w/crystal stopper; ebony 5-part relish w/platinum overlay in Gloria; #3900 dark emerald comport; pair of gold krystal candle holders; mayo set in amber w/Willow etch; Rosepoint gold encrusted cigarette holder; Martha blank 3-part relish etched Chantilly; #6004 6" vase gold encrusted Wildflower. A Rosepoint etched Martini pitcher w/stir; amber perfume in Farber holder; pair Mt. Vernon shakers w/sterling holders; primrose perfume; enameled perfume; 10" vase in smoke; and a light green 4" perfume. There were also several pieces of Heisey, Fostoria, New Martinsville, etc., on display.

submitted by Jane Kersey

**STUDY GROUP #13 - SOUTH WEST OHIO
"MIAMI VALLEY, OHIO"**

The Miami Valley Study Group met October 9th in the Huber Heights, Ohio, library. There were 17 members present.

It was reported that we did finish cleaning the remainder of the etching plates (75 this time) on September 22nd. There was general discussion about the catalog reprints.

Our Nominating chairman Clarke West asked if anyone would like to fill an office for the next year. Those running will be: President, Jim Kennon; Vice-President, Norma Hufford; Treasurer, Clarke West; and Secretary, Sue Rankin. Election will be held in November.

Program for the evening was on Perfumers and associated items. Frank Wollenhaupt led the discussion. There were 26 perfumers and atomizers, and 10 powder boxes on display.

"Show & Tell" items consisted of the following: light emerald green oval cheese and cracker w/satin finish; #3400 approx. 12" vase etched Portia; a tall ring stemmed vase etched Portia; crystal Caprice vase, approx 4"; pink crackle tumbler; #3400 4-ftd. bowl etched Diane; several Cambridge Arms pieces. A pair of Azurite candleholders; #3400 32 oz. amethyst jug w/silver overlay of Tavern scene with small tumblers w/silver overlay of "Just a Swallow"; crystal Lexington covered sugar; #1409 crystal rose bowl; dark green Blue Jay; and a #585 blue bell perfumer.

submitted by Vicki Wollenhaupt

continued on page 14




THE CAMBRIDGE GLASS CO.

extends

Season's Greetings

with best wishes for a prosperous New Year



*Visit us in
Rooms 514 & 516
at the W.M. PENN HOTEL
Pittsburgh
January 11th
through 13th*

Bearing holiday cheer in another timely arrangement of unique table accessory units, Cambridge brings you glad tidings. There'll be hosts of glorious designs, fresh as the New Year, on display at the Pittsburgh Show in January. Be the first to see and sell this lovely Cambridge glassware all America wants. New, current and time-honored Cambridge patterns open stock . . . no price increase anticipated at present. Enjoy the added profit of Cambridge's 2-10 cash discount. Order from The Cambridge Glass Co., Cambridge, Ohio.



(This advertisement was used in the December 1955 issue of "Crockery & Glass Journal.")

STUDY CLUB continued from page 12

STUDY GROUP #14 - CAMBRIDGE, OHIO
"THE CAMBRIDGE CORDIALS"
Contact person - Judy Momirov
Phone: 614/432-2897

The Cambridge Cordials Study Group held their meeting October 20th in the home of Rich and Sally Bennett. There were 11 members and two guests present.

We did not have a former Cambridge glass worker for this meeting. We did decide on what item to have for our Raffle at the November Quarterly meeting.

Items for "Show & Tell" included: Pristine look-a-like cocktails; #3500 3-part covered candy in crown tuscan, etched Rosepoint; Nearcut Buzz Saw miniature covered butter; decanter with Skier decoration.

Next meeting will be held in the home of Mike and Cindy Arent.

submitted by J. D. Hanes

Fund Drive Update

by MARK A. NYE

It is with pleasure that I am able to announce this month, that the grand "Committed to Cambridge" Award has been selected. We wanted an item that was unique to Cambridge and hence the item selected is a Peach-blo Two-Kid figural flower holder on an oval base. One individual, randomly selected, from among those who have donated the full \$104 by the time of the Spring 1991 Quarterly meeting, will be the lucky recipient of the award in recognition of their fund drive support.

If you wish to take advantage of a 1990 tax deduction, your donation must be made prior to December 31, 1990. Remember, donations to the National Cambridge Collectors, Inc., are tax deductible to the full extent allowed by law.

Support your organization and its goals by participating in the fund drive, if you have not already done so.

Have a Merry Christmas



Sunday Flea Market Crowd

by - Paul White

Saturday Night! I'll be ready
For tomorrow's flea market or show.
Packed and priced in anticipation
Of a crowd of buyers or lookers

And some of them I know!

There'll be Joe Doakes from Alphadelphia,
If there's a bargain he'll find it
And bring it to me to show.

And crow.

Also Merrily Madcap will follow
Leave fingermarks on all of the glass.
She'll leave without spending a penny,
Though she'll say, "I'll be back,"

And pass.

Then perilous Pauline picks everything up
To show to her daughter Paulette.

She'll describe it in detail

At the name she will fail

She's never been known to be right,

Yet.

Then the Jones'es will examine each item
Taking prices to be used at their booth
And say they were looking for Tiffany
Being sure I have none!

What a goof!

Then Paperback Patty will finger the cards.
What she's hunting I'll never know.

She'll leave with no purchase

Sorted cards a disgrace,

She just used my chair through the show.

Then, bless her, here's Betty the Buyer,

She'll never haggle for price.

She likes what she finds

And Triumphantly smiles

At her prize.

I could go on for hours

Detailing the ones we both meet

But Suffice it to say

It'll be a great day

I'll cherish them all

And not cheat.

NEW BOOK ON RUBY GLASS

A new book by Naomi L. Over and edited by Tom Klopp, entitled "Ruby Glass of the 20th Century" may prove of interest to Cambridge collectors. It contains several color pages of Cambridge glass. It is well researched and includes an up-to-date price guide. If you are interested you can receive additional information by writing to: Antique Publications, P.O. Box 553 CB, Marietta, Ohio 45750.



N.C.C. CHRISTMAS SHOPPING SUGGESTIONS



For a Merry Cambridge Christmas, there are many items available from N.C.C. to make any Cambridge collector happy on Christmas morning. Be sure to place your order early and we will do our best to make sure everything arrives in plenty of time for Christmas giving.

Ohio residents add 6% State Sales Tax. Send your order, along with check or money order to cover same, to:

National Cambridge Collectors, Inc.
P. O. Box 416
Cambridge, OH 43725

MEMBERSHIP in N.C.C. is always a welcome gift and it keeps giving all year long. We will send a Christmas card signed as you request, along with membership card(s), and all information, to the person of your choice. Please send all needed information to reach us no later than December 5th. Individual Membership \$15 - Associates (at least 12 years of age and living in the same house) \$3. each.

BOOKS are always a welcome gift - especially so if you collect Cambridge Glass. In addition to the books listed in our Book Ad on page 2 of this issue, we also have the Rosepoint book w/P.G. for \$12.95. Please follow instructions in the ad concerning sales tax and P&I. **Updated Price Guides** are now available to **NCC MEMBERS ONLY** for the 1930-34 & 1949-53 Reprints at \$3.00 each; and the NCC Color Book at \$2. These prices include P&I.

CRYSTAL BALL BACK ISSUES make a nice addition to any Cambridge collectors' library. We have all back issues beginning with Issue #1 and continuing thru the current Issue #212. Cost is \$10 for 12 issues and \$1 each for quantities less than 12. Write for information on issues concerning a particular pattern, etc.

CRYSTAL BALL BINDERS - top quality, clear vinyl covered, 1½", 2 ring, loose leaf, holds approximately 24-36 issues. \$6 plus \$1 P&I.

BOOKENDS - Scotty, black frosted (3rd in the Museum Reissue Series); Eagle, cobalt blue (4th of the Museum Reissue Series). A few

left at \$30.00 each (your choice), plus \$3 P&I.

POST CARDS - white card w/factory photo & "The Home of NEAR-CUT" in black ink \$1.

CUP PLATES - with bulldog replica and NCC name - crystal, amethyst and teal (limited numbers of each) \$7 plus \$1 P&I.

CONVENTION FAVORS - add \$1.50 each P&I. Paperweight w/NCC logo and date - amber (1979); gold krystal (1982) \$14 each. Windsor blue (1980) \$16.

Georgian Tumbler, 2½ oz. w/NCC logo and date - amber (1985); gold krystal (1986) \$14 each; marked N.C.C. no date - pink (1984) \$12; marked "10th Anniversary 1973 N.C.C. 1983" cobalt blue (1983) \$18.

Nearcut Marjorie Punch Cup, light blue, marked "N.C.C. Convention 1987" in gold \$16. Cambridge Square Cigarette Holder, cobalt blue, marked "N.C.C. Convention 1988" in gold \$20.

Mt. Vernon Cordial, teal blue, marked "N.C.C. Convention 1989" in gold \$20.

Mt. Vernon Cordial pink, marked "N.C.C. Convention 1990" in gold \$20.

PAMPHLETS - reprints of original Cambridge booklet, pamphlets and leaflets - priced each, includes P&I.

Booklet "Cambridge Arms" \$2.

Pamphlet "Blossom Time," "Rose Point," "Chantilly," "Cambridge Square," "Martha" \$1. Leaflet "Rondo," "Star," "Laurel Wreath," "Roxbury," "Lynbrook" 50¢.

DAILY JEFFERSONIAN INSERT - 1989 Convention and related information \$1 each.

MARBLE (new 1988) milk glass, marked "The Cambridge Glass Co., Est. 1901" \$5 each.

T-SHIRT orange w/N.C.C. logo in black \$5 each (write for available sizes).

VCR TAPE - "The Crystal Lady" \$15 each plus \$2 P&I.

COLUMBUS ANTIQUE FLEA MARKET

(ANTIQUES AND COLLECTIBLES)

DECEMBER 9th

Ohio State Fairgrounds—Lausche Building—Off I-71 Exit 17th Ave.

SUNDAY ONLY—7:00 AM TO 4:00 PM

1991 SCHEDULE 1991

JAN. 13th • FEB. 24th • APRIL 7th • MAY 5th
SEPT. 8th • OCT. 6th • NOV. 10th • DEC. 8th

10TH
YEAR

10TH
YEAR

150 Quality Dealers

Show admission \$1.50 • Children under 12 free

Heated/Air Conditioned • Concession



*"The Friendly
Family Business"*

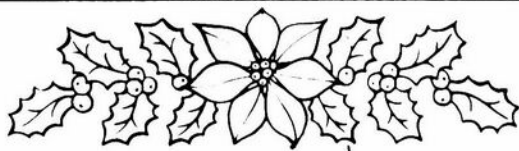
4214 North High Street, Columbus, Ohio 43214
(614) 267-8163 (614) 263-6830 (614) 885-2352

— Classified —

WANTED: Carmen, "Cut Wild Rose," punch bowl. Need bowl only! G. G. George, 1102 W. Palm Lane, Phoenix, AZ 85007. 602/252-3151.

WANTED TO BUY: Any Cambridge Elaine etch pieces. #3400 stem. E. Smith, P.O. Box 432, Newark, IL 60541. 708/554-9655.

FOR SALE: Happy Holidays! #638 light green candlesticks, pair \$125. Apple Blossom etched #646 candlesticks, gold krystal, pair \$55. Diane etched #3400/62 8½" plates 6 for \$65. Dolphin candlesticks, light green, pair \$160. Rosepoint: round 7" mayo plate \$15; #3400/77 ftd. shaker \$25; #3900/1177 shakers, pair \$40. UPS Extra. Robert Taylor, 80 Middle St., Apt. 21, Gloucester, MA 01930. 508/281-4637.



REPLACEMENTS, LTD.

A Million Pieces! Obsolete, Active & Inactive China, Crystal & Flatware.

Nick your best crystal?
Drop a spoon down the disposal?
Replacements, Ltd. keeps these
everyday hazards from devaluing
your patterns and stealing
precious memories.

To Buy or Sell:

Call (919) 697-3000, or write:
1089 Knox Rd., P.O. Box 26029
Greensboro, NC 27420
(SASE Please)

LYNN WELKER

2 East Main Street
Phone (614) 826-7414.

New Concord, OH 43762
UPS extra, Excess ref.

Adonis, stem #3500, cut: Tall sherbet/champagnes	(8) \$22.	Rosepoint: #3900/17 cups/saucers	(7) \$30.
Appleblossom, Yellow: #3400/62 8½" plates	(8) \$ 9.	#3400/176-7½" plates	(8) \$12.
#3400/60 6" plates	(4) \$ 8.	#3400/54 cups/saucers	(2) \$30.
#3130 tall sherbets	(5) \$18.	#3400/34 2 hdd. vegetable	\$60.
#3400/71 3" 4 ftd. nutcups	(4) \$45.	#3121 cocktails	(8) \$25.
Blossomtime, stem #3600: Clarets	(2) \$28.	#3121 clarets, rare	(7) \$55.
Wine	(1) \$25.	#3500/124-3¼" ashtray	\$40.
Caprice: Mocha cups/saucers	(5) \$25.	#3500/126-4" ashtray	\$50.
Pistachio cup/saucer	(1) \$30.	Sterling salt spoons	(8) \$12.
Emerald #66-13" bowl	\$55.	Much more-rarities, vases-Write	
Crystal #180-5 oz. tumblers	(3) \$16.	Crown Tuscan: #1309 5" rosebowl/ vase	\$30.
Crystal #300 cocktails	(8) \$15.	#16-7" shell comport,	
Chantilly: #3625 goblets	(7) \$20.	Charleton rose, boat scene	\$60.
#3625 tall sherbet/champs.	(7) \$18.	Dolphin 2 lite candlesticks	\$125.
#3625-5 oz. ftd. juices	(7) \$18.	#6004 gold Portia vase	\$65.
Cups/saucers (Martha blank)	(8) \$25.	#702 miniature cornucopia	\$15.
8½" plates (Martha blank)	(4) \$12.	#3500/41-10" urn lid only	\$50.
#3900/126-12" celery & relish	\$40.	Nudes-25 different, Write.	
#1612/1614-16" dolphin hurricane	\$175.	Swans-3½": Crown Tuscan, Style III	\$30.
Diane, stem #3122: Goblets	(8) \$20.	Ebony, Style II, signed	\$50.
12 oz. iced teas	(7) \$20.	Mocha, Style II, signed	\$75.
Tall sherbet/champagnes	(7) \$16.	Crystal, Style III	\$14.
3 oz. cocktails (tall)	(8) \$16.	Candelabras, parts: #2355-8" large epergne vases	\$16:
Hunt Scene, Pink, gold encrusted: Goblets, tall	(6) \$40.	#2355-7" Camb. Arms vases	\$18.
Clarets, rare All mint	(6) \$40.	Bobeches with 8 prisms	\$20.
Cocktails gold	(6) \$35.	#1537-B peg nappies w/well	\$10.
Sherbets	(6) \$30.	#645 5 pc. epergne complete	\$75.
Marjorie, etched: Champagne/sherbets	(12) \$10.	#1358 lg. Caprice epergne	\$120.
Rose, Cambridge, cut: #3700 goblets	(5) \$12.	More parts-Write.	
		Miscellaneous: Ebony 5½" tall early basket	\$40.
		Dark Amber Jenny Lind basket	\$75.
		Violet Everglades #23 vase	\$85.
		Amber Mt. Vernon #84 stein	\$25.
		Pink Cleo Decagon 12" bowl	\$30.
		Peachblo Round demi cup/s.	\$15.
		Marjorie Nearcut mapkin ring	\$18.

Prices each. UPS extra. Excess refunded. Return privilege.

L. A. MANESS

RT. 1, BOX 552, ASHLAND, VA 23005
(804) 798-1825

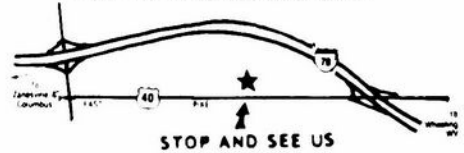
C = MARKED P & I \$3 CTN.

- #1321 28oz. decanter, amethyst w/crystal stopper.....\$ 75
- #3400 line 8" 3-part relish, crystal w/#615 cutting C.....\$ 47
- Chantilly duo candlesticks, crystal, pair.....\$ 60
- Caprice 7" ftd. comport w/silver decoration, crystal.....\$ 30
- Decagon cups & saucers, green (8) C set.....\$ 15
- Decagon 7½" plates, green (4) C each.....\$ 10
- Decagon #1096 cream or sugar, gold krystal, each.....\$ 15
- Decagon 11" center handled plate, gold krystal.....\$ 45
- Pristine Demi cups & saucers w/#725 etch, green (8) C set...\$ 15

VISA/MASTERCARD WELCOME

Stage Coach Antique Mall

WELCOME TO CLASS COUNTRY!



RT. 40 ONE-HALF MILE WEST OF I-70 EXIT #164
MANY DEALERS - WIDE SELECTION - PLENTY PARKING

WE FEATURE GLASSWARE OF:
CAMBRIDGE, HEISEY, FENTON, & FOSTORIA
Plus Art Pottery & a General line of Antiques

DORIS AND ROY ISAACS
BUY AND SELL
614-872-3720



7525 EAST PIKE
NORWICH, OHIO 43767

MON THRU SAT 10-5:30 SUN 12-5:30
SUMMER EVENING HOURS BY CHANCE

SPRINGFIELD Antique Show & Flea Market

Clark County Fairgrounds

SPRINGFIELD, OH

Exit 59 on I-70

400-800 DEALERS

INSIDE AND OUTSIDE

Ohio's largest year round show with an
emphasis on quality antiques

9:00 AM - 5:00 PM

Admission \$1.00

Children under 12 FREE

NEXT SHOW

DECEMBER 8 & 9, 1990

1991 SHOW DATES

JAN.	19-20	Inside
FEB.	16-17	Inside
MARCH	16-17	Inside
APRIL	20-21	Inside & Outside
MAY	17-18-19	Extravaganza

BRUCE KNIGHT, MGR.

For Information Write
P.O. Box 2429, Springfield, OH 45501
Phone (513) 325-0053

The DAZE

***SPECIAL OFFER**
to NCC friends \$2. off
the 1 year subscription
price when on this form
or copy of.

The Original National monthly newspaper dedicated to the buying, selling & collecting of colored glassware and china including Depression Glass and the Elegant Glass (Cambridge, Heisey, Fostoria, etc.) We educate and inform you each month with feature articles by top notch columnists, readers "finds", club happenings, show news and a multitude of ads. Find those missing pieces to your 30s, 40s or 50s pattern. Can't identify it? Perhaps we can help "Keep up with what's happening with a subscription to the DAZE. Buy, sell or trade from the convenience of your easy chair.

Name _____ Street _____

City _____ State _____ Zip _____

1 yr \$17 2 yrs \$33 \$2. Single Current Copy

Exp date _____ Card No. _____

Signature _____

Orders to D.G.D., Box 57NC, Otisville, MI 48463

Please allow 30 days for your first issue. Canadian subscribers, add \$1. per year and subscribe by charge card only! This Special Offer may not be combined with any other special offer.

DEALERS



DIRECTORY

NOTE: When writing to the Dealers listed here, please enclose a SASE!

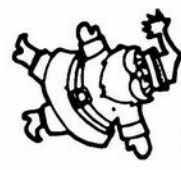
<p>SANDY'S ANTIQUE MALL 617 Wheeling Ave. Cambridge, OH 43725 Phone 614/432-2570</p> <p>COLLECTOR'S ITEMS Summer 9 - 6 Daily * Winter 9 - 4:30 Mon - Sat</p>	<p>BENICIA ANTIQUE SHOP 305 First Street Benicia, California 94510</p> <p>OPEN 11 AM - 5 PM Closed Monday</p> <p>Z. E. LOPES 707-745-0978</p>	<p>THE MUTED SWAN ANTIQUES 5486 Peachtree Rd. Chamblee, GA 30341 Heart of Chamblee Antique Row Specializing in Cambridge, Heisey and Fostoria Bill & Pat Miller 404-451-7620</p>
<p><i>YOU CAN ADVERTISE YOUR ANTIQUE SHOP HERE!</i></p>	<p>VISIT HISTORIC BENICIA and its 28 shops Off Interstate #80 North of San Francisco</p>	<p>Elegant Depression Era Glassware</p> <p>ABBA ANTIQUES 1157 Charlie Lane Lilburn, GA 30247 Bill & Barbara Adt (404) 279-1942 Shows, Mail Order, & by Appointment</p>
<p>THE GLASS URN 456 West Main Street, Suite G. Mesa, AZ 85201 602 / 833-2702 Mail Order Shows Open Shop CAMBRIDGE, FOSTORIA, HEISEY, ETC.</p>	<p>ANTIQUES ON THE MALL SPECIALIZING IN CAMBRIDGE GLASS Stagecoach Mall - Bldg. 3 - Norwich, OH Virginia Bennett 614/432-4483 64183 Warne Drive. Cambridge, OH 43725</p>	<p>BUYING COLORED CAMBRIDGE GLASS (Send List with Prices) FEDERAL HILL ANTIQUES 78 Maple Street Bristol, CT 06010</p>
<p>ETTELMAN'S DISCONTINUED CHINA & CRYSTAL Cambridge a Specialty P.O.Box 6491-CB Corpus Christi, TX 78466 Phone (512) 888-8391 Include S.A.S.E.</p>	<p>D & D ANTIQUES Columbus, Ohio</p> <p>DICK SLIFKO SHOWS ONLY</p>	<p><i>YOU CAN ADVERTISE YOUR ANTIQUE SHOP HERE!</i></p>
<p>THE GLASS CUPBOARD 39 Shire Oaks Drive Pittsford, New York 14534 Marcia Ellis Cambridge, Duncan Miller (716) 586-7596 Shows, Mail Order, Appt.</p>	<p>JUDY'S ANTIQUES Judy Bennett 422 S. Ninth Street (Corner of Jefferson) Cambridge, Ohio 43725 BUYING Ph. 614-432-5855 SELLING Cambridge Glass my Specialty</p>	<p>"HAPPINESS IS" - THE STULTZS 3106 Warren Court Glen Allen, VA 23060 SHOWS & MAIL 804-672-8102 (RICHMOND AREA) AMERICAN MADE GLASS CIRCA 1890-1960</p>
<p>JOHN C. WOLFE, JR. Visual Display, Suite S 592 E. Main St., Columbus, OH 43215 CAMBRIDGE, A SPECIALTY VINTAGE WRISTWATCHES</p>	<p>GREEN ACRES FARM 2678 Hazelton Etna Rd., Pataskala, OH 43062 (State Route 310 North) Sat. & Sun. 1-7 PM 614/927-1882 Antiques, Crystal Glass and Collectibles</p>	<p>CROW'S NEST ANTIQUES Constance Crow Buying & Selling Elegant Depression Era Glassware Austin Antique Mall 7511 McCann Austin, TX 78758 (512) 371-0244</p>
<p>THE HITCHING POST 7467 S. R. 88 Ravenna, OH 44266 Ph. 216-296-3686 D. McDaniel CAMBRIDGE — HEISEY — GENERAL LINE</p>	<p>PATCHES OF VIRGINIA Specializing in China and Glass Virginia T. Houston 34116 Roberts Rd., Eastlake, OH 44095 Phone: (216) 975-8315</p>	<p>CRYSTAL LADY 1817 Vinton St., Omaha, NE 68108 Joann D. Hagerty Bus. (402) 341-0643 Res. (402) 391-6730 Specializing in Elegant Glass & Collectables</p>
<p><i>YOU CAN ADVERTISE YOUR ANTIQUE SHOP HERE!</i></p>	<p>REMEMBRANCES 7597 Daphne Dr., No Syracuse, NY 13212 Shirley S. Ladouceur 315 / 458-5297 ANTIQUES and COLLECTIBLES MAIL ORDER SHOWS APPOINTMENTS</p>	<p>MARGARET LANE ANTIQUES 2 E. Main St., New Concord, OH 43762 Lynn Welker 614/826-4418 CAMBRIDGE GLASS MATCHING SERVICE Hours Mon.-Fri. 1-5 PM or by Appointment</p>
<p>GLASS RESTORATION</p> <p>BRILLIANT CRYSTAL ELEGANT DEPRESSION</p> <p>DON & LYNNE WORMLAND MT. CLEMENS, MICH. (313) 791-9191</p>	<p>WATKINS (Fine Quality) CAMBRIDGE GLASS SHOP 1429 Marquand Ave. (Corner of Woodlawn) Cambridge, OH (614) 432-4460 Lana Watkins</p>	<p>HELEN & JIM KENNON Heisey, Cambridge, Fostoria, Duncan, Imperial, Fenton, Tiffin P.O. Box 114 Brookville, OH 45309 PH: (513) 833-5406 SHOWS ONLY</p>



National Cambridge Collectors, Inc.

P O Box 416 Cambridge, Ohio 43725

A nonprofit organization dedicated to the preservation and study of Cambridge Glass



You Are Cordially Invited To Become A Member Of The

NATIONAL CAMBRIDGE COLLECTORS, INC.



Benefits derived from membership include: receipt of our club publication. The Cambridge CRYSTAL BALL; informative Quarterly Meetings; Antique Shows; Auctions; other special events; and unlimited admission to the museum.

The Cambridge CRYSTAL BALL is published the first of each month. This newsletter contains educational and interesting articles, questions and answers, information on reproductions and reissues, notices of all club functions, classified advertisements, dealers directory, and many other features of interest to collectors of Cambridge Glass. Yearly dues are \$15.00 for Individual Members and \$3.00 for each Associate Member. All members have voting rights, but only one issue of the CRYSTAL BALL will be mailed per household.

Name (please print) _____ \$15.00

Mailing Address _____

City _____ State _____ Zip _____

Associate Members: (Must be at least 12 years of age and living in the same household)

- 1. Name _____
- 2. Name _____
- 3. Name _____

Total number of Associate Members _____ @ \$3.00 each \$ _____

TOTAL AMOUNT ENCLOSED: \$ _____

Please make check payable to: NATIONAL CAMBRIDGE COLLECTORS, INC. Recommended by _____

THE PERFECT CHRISTMAS GIFT! N.C.C. MEMBERSHIP

National Cambridge Collectors, Inc. P. O. Box 416 Cambridge, Ohio 43725

FIRST CLASS MAIL U.S. POSTAGE PAID So Vienna, Ohio 45369 Permit No 15

FIRST CLASS MAIL



GREETINGS!

Merry Christmas

DECEMBER 1990

Flower — Narcissus • Birthstone — Turquoise

Membership Renewal Notice This is your last issue of the Crystal Ball—if the date on your address label reads 12-90. Please renew now!