



Cambridge Crystal Ball

Published monthly by the National Cambridge Collectors, Inc.
to encourage and report the discovery of the elegant and boundless product
of the Cambridge Glass Company of Cambridge, Ohio

Issue No. 216

April 1991

From The President's Desk

The 1991 All-Cambridge Glass Auction is now history, and as always, there were surprises. That is, items going for a lot more than one would expect. For example, an item recently advertised in the CRYSTAL BALL went unsold, and yet, at the auction an identical item went for more than twice the advertised price!

A word of caution. A single auction sale does not establish the value of a piece of glass. In the case of a rarity, such a sale does give a good idea of a price range, but on the other hand, two bidders wanting the same piece of no great distinction, to complete a set or for other reason or reasons, can drive bidding to unbelievable heights. The next auction may, on the other hand, see the same piece going for much less.

I constrained myself this year, bidding primarily on items I had preselected; and I was quite successful, without spending a great deal. Everything I bought this year fell into the category of stemware, and I am beginning to wonder where they are going to go. The shelves I installed a couple of years ago and then remodeled to provide more space, are once again full. There are pieces of stemware sitting on the floor under the display shelves, as well as being packed away; and at this point I have no idea what I am going to do, except to pitch a tent in the backyard and let the glass take over the house! Little did I know what the future held when I bought that first piece of Cambridge stemware, some seven years ago.

Among the items brought home to Miami, was a Virginian tall sherbet with a satin finish stem. The Virginian line is just not that plentiful, flatware or stemware, and I have only seen stemware pieces for sale one or two times in the past seven years. I was not aware it was made with the satin finish stem, and it makes a nice addition to the collection. Two sets of stemware, the #3114 tall sherbets etched Yukon, and Pristine low sherbets etched Laurel and gold encrusted, sold below what I thought they would command; so rather than just buy one for the collection, the sets themselves journeyed South.

Little by little the pieces to the puzzle come together. A number of the Cambridge etching plates, acquired a few years ago, bear etchings that are unquestionably Cambridge, and yet, are unidentified and go unseen on actual pieces. We have now identified one more by means of a factory identification label on a peach-blo #3051 goblet (that recently surfaced), as "Wild Rose." Based on the stemware line on which it was found and its color, along with the existing catalogs, this etching was probably in use between 1925 and 1930. Since there was more than one of the Wild Rose etched goblets, I was able to bring one home.

Other "goodies" recently added to my collection are: a willow blue straight sided, flat bottom tumbler, etched Diane; and two Plainware plates, dinner & salad, in ivory.

continued on page 4

Cambridge Crystal Ball

Official publication of National Cambridge Collectors, Inc., a non-profit corporation with tax exempt status. Published once a month for the benefit of its members.

Membership is available for individual members at \$15 per year and additional members (12 years of age and residing in household) at \$3 each. All members have voting rights, but only one *Crystal Ball* will be mailed per household.

Back issues of the *Crystal Ball* are available (beginning with Issue No. 1, May 1973) for members only. Cost: \$1.00 each or 12 issues for \$10.00.

1990-91 Officers & Committee Chairpersons

President	Mark A. Nye
Vice-President	Cynthia A. Arent
Secretary	Joseph Andrejcek
Treasurer	William C. Smith
Sergeant-at-Arms	Judy Momirov
Acquisition	Joy McFadden
Budget & Finance	David B. Rankin
By-Laws	Marybelle Moorehead
Membership	Phyllis D. Smith
Museum—Facilities	Doyle Hanes
Museum—Interior	J.D. Hanes
Non-Glass Items	J.D. Hanes
Nominating	Willard P. Kolb
Program	Cynthia A. Arent
Project	R. Clarke West
Publications	William C. Smith
Public Relations	Bill & Phyllis Smith
Publicity	Cynthia A. Arent
Study Group Advisor	Judy Momirov
1991 Auction	Lynn M. Welker
1991 Antique Show	Joy R. McFadden, Mary Beth Hackett
1991 Convention	Marybelle Moorehead
1991 Flea Market	Marlene & Harold Snyder
Crystal Ball Editor	Phyllis D. Smith

Classified Advertising Rates

10 cents per word \$2.00 minimum
We cannot mix type size in classified advertisements. Abbreviations and initials will count as words. Payment in full **must** accompany all ads.

Display Advertising Rates

(Camera-ready ads preferred)	Members	Non-Members
1/8 page	\$ 6.00	\$10.00
1/4 page	10.00	15.00
1/2 page	18.00	25.00
3/4 page	25.00	35.00
Full page	33.00	45.00

Dealers Directory

Five-line maximum \$18.00 for 12 months

Cambridge *Crystal Ball* assumes no responsibility for items advertised and will not be responsible for errors in price, description or other information.

Advertising copy, articles, club news and notices must be in our hands by the 10th of each month to assure publication in our next issue.

Paid advertisements containing reproductions or new glass will not knowingly be accepted for publication.

Opinions or information stated in any signed article or letter printed in the *Crystal Ball* are those of the authors and may or may not agree with National Cambridge Collectors, Inc. The Editor reserves the right to refuse and to edit any material submitted for publication so as to conform with the editorial style of the *Crystal Ball*.

Please Address All Correspondence to:

National Cambridge Collectors, Inc.
P.O. Box 416 Cambridge, Ohio 43725

President — Mark A. Nye, 305/221-0343

Secretary — J.D. Hanes, 614/432-6794

Editor — Phyllis Smith, 513/323-3888

N.C.C. Museum — 614/432-4245

Please notify us immediately of any change in your address.

Please enclose an SASE when requesting information.

CAMBRIDGE GLASS BOOKS FOR SALE

By National Cambridge Collectors, Inc.

- **Colors in Cambridge Glass***
128 pages, 60 color plates, fully indexed
Hardbound with price guide \$19.95
 - **1930-34 Cambridge Glass Company Catalog Reprint***
250-page reprint of original catalog
Paperback with price guide \$14.95
 - **1949-53 Cambridge Glass Company Catalog Reprint***
300-page reprint of original catalog
Paperback with price guide \$14.95
 - **1956-58 Cambridge Glass Company Catalog Reprint***
164-page reprint of original catalog
Paperback \$6.95
- *For NCC members only, the above publications are available at a 10 percent discount.

By Bill and Phyllis Smith

- **Cambridge Glass 1927-1929**
66-page reprint of original catalog
Paperback w/identification guide \$7.95

By Cambridge Buffs Study Group

- **Nearcut**
108-page reprint of 1910 Cambridge catalog
Paperback with price guide \$9.95

By Mark A. Nye

- **Cambridge Rose Point**
94 pages, fully indexed
Paperback with value guide \$12.95

By Mary, Lyle and Lynn Welker

- **Cambridge Glass Company**
120 pages of reprints from eight old catalogs
Paperback \$10.00
- **Cambridge, Ohio Glass in Color II**
Spiralbound \$5.95

By Harold and Judy Bennett

- **1903 Cambridge Glass Company Catalog Reprint**
106-page reprint of an original catalog
Paperback \$7.50

Address your orders to:

Books
National Cambridge Collectors, Inc.
P.O. Box 416
Cambridge, OH 43725

Please add postage and handling to your order (first book, \$2.00; each additional book, 50 cents). Ohio residents add 6 percent state sales tax.

Dealer discounts available—please write!

DECAGON VS. EGG HARBOR

by F. R. "BUD" WALKER

For those of you who do not know me, my name is Bud Walker. I live in Egg Harbor, New Jersey. I have been around glass all of my life. My great grandfather owned a window glass factory, and I was a mold boy for my neighbor who had a small shop in his back yard. I worked with a fellow named Wib Orme who was the grandson of A. J. Bennett - the man who made the Cambridge Glass Company the success that it was. Before Wib passed away, he gave me a carmen mug with a crystal handle. This was the beginning of my Cambridge collection.

This article is not about the Cambridge Glass Company. It's about an almost forgotten glass company that was located in Egg Harbor City, New Jersey. The name of this company was Liberty Works, at one time, and Liberty Glass Company, at another.



This article is written in the hope of ending the confusion between the Liberty Glass Works' "Egg Harbor" line (which was a 24 piece breakfast set), and the Cambridge Glass Company's "Decagon" line. Both companies produced their lines in emerald green and pink, which further adds to the confusion.

This past fall, my wife and I were at a large flea market in Pennsylvania where we came upon an Egg Harbor breakfast set. The price was right and we had about decided to purchase it, when the dealer approached us and said that it was a lovely Cambridge Decagon set. I told her that I collected Cambridge and that the set was not their's. Before I could say who's it was, I got the old "don't tell me, I've been in the antique business for more than twenty years and I know Cambridge when I see it." One word led to another and she lost a sale, and I lost the breakfast set that I wanted to purchase from her. I learned a lesson! If they are interested in learning, I tell. If they insist it's Cambridge, that's okay by me.

In order to identify the Liberty's Egg Harbor line you need to know that the cups are six

sided and flare way out from the base. Each of the panels is dished at the lip of the cup and the handles are round. The saucers are eight panelled and are slightly dished at the edges. The luncheon plates are also eight panelled.



EGG HARBOR

The Cambridge Decagon cups have ten panels. The sides are almost straight with a slight flair at the lip. The handles are square. The Decagon saucer is 3-3/8" and has ten panels. It has a more rounded look. The base of the Egg Harbor saucer is 3-3/8" across, while the Decagon saucer is 2-3/8". The base of both cups is 2". Cup height is 2-1/4"



DECAGON

for Cambridge and 2-1/8" for Liberty. The Egg Harbor luncheon plate is 8" while the Decagon is 8-5/8".



DECAGON and EGG HARBOR

In my opinion, there is no way that you can tell who made the piece by its color. The finish on the Decagon pieces feel slightly smoother to the touch than the pieces of Egg Harbor. Cambridge glass quality is much better than Liberty's.



PRESIDENT continued from page 1

If my recent trip, to and from Columbus, Ohio (en route to Cambridge) was any indication, reservations for air travel to and from this year's Convention should be made soon. Particularly in those markets where Eastern Airlines was strong. All segments of the trip were close too, if not at, capacity seating.

Plan now to attend the 1991 Convention. Ask anyone who has attended and you will be told, we do have fun, buy glass, and learn about the Cambridge Glass Co. and its product.

Regardless of Convention plans, do participate in the upcoming NCC elections. Your vote does count, and it is your way of having a say in how the club is run. One of our basic freedoms is the right to vote in legitimate elections. So, exercise your right at every opportunity, local, state and federal elections; as well as those of organizations to which you may belong.

Until next month - Collect Cambridge!

A great big THANKS

by MARK A. NYE

It is a pleasure to announce that the winner of the Grand Committed to Cambridge Award (a peach-blo Two-Kid flower holder) is Joanne Paul of Newark, Ohio. Mary Martha Mitchell was asked to draw the winning name during the Quarterly meeting. The Fund Drive came to a conclusion last month and the name of everyone who contributed the full \$104 to the drive, was included in this drawing.

My thanks, and those of the other officers and Board members, go to Joanne and all others who participated in the Fund Drive.

When an 8 oz. tumbler contains four ounces, is it half full or half empty? When there are some clouds in the sky, is it partly sunny or partly cloudy? Did the Fund Drive succeed, or did it fail? In every instance, it is your perspective that determines the answer.

The Fund Drive, over the two year period, raised a total of \$18,424.50 in cash, Cambridge glass & paper, and supplies & services. Cash contributions amounted to \$11,787.50; Cambridge glass and other company related items for the museum came to \$3,809.00; and

goods and services totaled \$2,828.00. As stated two years ago, the proceeds from the drive will be split between buying glass for the museum and starting a building fund. It will not be used to fund day to day museum operations.

So, did the drive succeed or fail? It succeeded in that we have \$18,424.50, in cash, glass, other items, supplies & services, more than we had two years ago. It failed in that we did not come close to achieving the established goal of \$100,000.. One should always look at the positive side, and on that basis, the Fund Drive did succeed!

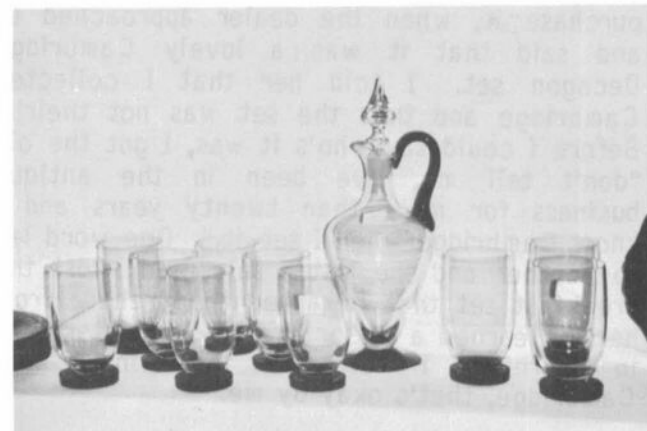
Late contributors to the drive, who were not listed in last month's C.B., but were included in the drawing, are: John McNabb; Paul White, Suzanne Smith; Loretta & Charles Weeks; Joy McFadden; Linda Roberts; and Reba Embree. Again, to all who participated, we say

T H A N K Y O U !

1991 AUCTION WAS GREAT SUCCESS!



Gold encrusted Rosepoint bowl went for \$50, while ind. cream & sugar set brought \$40.



All 10 of the 12 & 14 oz. Tuxedo tumblers sold for \$84; and the decanter brought \$75.

AUCTION REPORT

by CINDY ARENT

Whenever a large selection of Cambridge glass is auctioned, you can expect spirited bidding throughout the day. This year's annual N.C.C. Auction, organized by Lynn Welker, was no exception. From beginning to end, auctioneer Craig Connelly of Granville, Ohio, did an excellent job at encouraging attendees, from many states, to be the top bidder on each piece of glassware.

As usual, the 1991 Auction contained an excellent representation of the many types of elegant glassware produced, by the Cambridge Glass Company, between 1901 and 1958. All of the favorites were present, including: Nearcut, Nudes, Caprice, Etchings, Swans, Crown Tuscan, and much more. Many of the favorite faces were also present in the crowd, and also some new faces that we hope will return at Convention time.

The highest priced item, and the biggest surprise of the day, was a helio color, 24" tall, electric lamp with original fittings, which sold for \$600.



Helio lamp shown on top shelf. Smaller lamp in Blue II (2nd shelf) brought \$250.

Many were also surprised when a Cambridge Glassworker's badge in the shape of the first Cambridge pitcher brought a winning bid of \$280.

Cambridge swans are always a favorite at the auction and this year was no exception. A signed, royal blue, 3" swan went home with a happy bidder for \$225; while an ebony, signed, 8½" swan sold for \$200.

This year's auction list contained a good

variety of Nearcut pieces. Among them were: a Countess Nearcut miniature lamp which went for \$110; and a Radium Nearcut cake salver which brought \$55. The Marjorie Nearcut punch bowl, base and eight cups, shown below, went very reasonably for \$100.



NEARCUT "MARJORIE" PUNCH SET

Another very popular line is the #3011 Nude or Statuesque line. This year, Nude stem items ranged from \$70 for an amethyst cocktail, to \$350 for an amber 6 oz. hock. A crown tuscan stemmed cocktail with mandarin gold bowl, sold for \$100.

The auction included several unusual single pieces of stemware, as well as, attractive stemware sets. A single #3130 8 oz. gold krystal goblet with gold encrusted Gloria etch, sold for \$100; and a #3115 topaz 9 oz. goblet with willow blue stem and foot, sold for \$35. A nice set of six #3114 Yukon etch tall sherbets sold for \$9 each.

The Caprice line was also well represented in this year's auction. Caprice items were sold in such colors as moonlight, pistachio, mocha, la rosa, and crystal. A pistachio Caprice cup and saucer went for \$40, and a moonlight, footed, 12½" plate brought \$95.

The pressed Rosepoint champagne in royal blue, and wine in amethyst, sold for \$105 each. The Queen salt & pepper in turquoise brought \$150. And, the topaz Dog bottle went for \$100 while the Cat brought \$150.

As usual, no matter what you collect, the auction provided an excellent chance to add to your collection. If you missed the auction this year, the National Cambridge Collector's Antique Show & Sale will be June 28 - 30, at the Shenandoah Inn, Old Washington, Ohio. I hope we will see you there.

Club News

National Cambridge Collectors, Inc.
Quarterly Meeting
March 1, 1991
Shenandoah Inn, Old Washington, Ohio

The regular meeting was called to order at 8:10 pm by President Nye. In attendance were approximately 60 club members and all 12 Board members. A motion was made by Frank Wollenhaupt to dispense with the reading of the minutes of the previous meeting since they are published in the CRYSTAL BALL. Motion carried.

Due to the temporary absence of Bill Smith, the Treasurer's report was deferred until later in the meeting.

COMMITTEE REPORTS

ACQUISITIONS: No report.

BY-LAWS: No report.

CONVENTION: Chairman Marybelle Moorehead reported that the dates of the Convention are June 26 to June 30, 1991. The theme will be Candlesticks. Marybelle then stated that since candlesticks will be the theme, these will be decorated with flowers for the tables and we will not need console bowls, but will still need candlesticks. She then reported that the speakers for Convention will be Frank Wollenhaupt for Saturday Breakfast; and George Fogg and Frank Maloney for the Banquet.

CRYSTAL BALL: Editor Phyllis Smith reported that the March issue had been mailed on Wednesday (February 27). She stated that as always we can use articles or ideas for articles, and additional advertising.

MEMBERSHIP: Chairman Phyllis Smith reported that as of 2-28-91, we had 1011 Individual, 374 Associate, and 7 Honorary members, for a total of 1392. She stated that she thought this was an all time high on membership.

With the return of Bill Smith, President Nye called for the Treasurer's report.

Treasurer Bill Smith reported that the report for the end of 1990 would be unofficial since the auditors had not finished with the books.

As of 12-31-90 our Museum income was \$12,934.00 to increase the total Museum equity to \$146,891.00; and our Operating income was \$2,527.00 to increase the Operating equity to \$25,445.00 for a total equity of \$172,336.00. Bill then reported that as of 1-31-91 our Operating equity had income of \$50.00 to increase Operating equity to \$25,395.00 and Museum income had been \$816.00 to increase Museum equity to \$147,706.00 for a total equity of \$173,102.00.

President Nye then explained that equity is a total of our assets and cash, and not the cash that we have to work with.

After the Treasurer's report, the agenda returned to the Committee reports.

FLEA MARKET: Co-chairman Marlene Snyder reported that the Flea Market would be held at the same location as last year, the Buckeye Trail Middle School in Old Washington, Ohio. She also reported that they had mailed the contracts for the Flea Market. She then reported that the Flea Market would be held on Saturday, June 29, 1991.

AUCTION: Chairman Lynn Welker will give a "hi-light" talk after the meeting.

ANTIQUe SHOW: Co-chairman Joy McFadden reported that the first mailing of the contracts are out and are due back in two weeks. She reported that they had received about 70% of them back so far. She then reported that the advertising has been printed and she will bring it to the Auction on Saturday.

MUSEUM FACILITIES: Chairman J.D. Hanes reported that the Museum had opened today. He told of some changes in displays and some new items that had been placed in the museum.

MUSEUM FACILITIES: No report.

NON-GLASS ITEMS: No report.

NOMINATING: Chairman Willard Kolb reported that Joe Andrejcek had been appointed to fill the vacancy created by the resignation of Janice Hughes.

Willard Kolb then announced that those nominated for the Board are Lynn Welker, J.D. Hanes, Joe Andrejcek, Tom Kullman, and Bud Walker.

continued next page

Board members whose terms expire in 1991 are: Lynn Welker, J.D. Hanes and Joe Andrejczak.

President Nye then asked if there were any nominations from the floor. Phyllis Smith nominated David Rankin.

There being no other nominations, President Nye announced the nominations closed. Therefore, nominees for the Board of Directors for this year are, in alphabetical order:

Joseph Andrejczak, Lakewood, Ohio
J. D. Hanes, Cambridge, Ohio
Thomas D. Kullman, Jr., Zanesville, Ohio
David B. Rankin, Brookville, Ohio
F. R. Bud Walker, Egg Harbor, New Jersey
Lynn M. Welker, New Concord, Ohio

PUBLICITY: Chairman Cindy Arent reported that she will be sending out advertising for Convention and the Antique Show & Sale, in the next few weeks. She reported that she had also written to tour companies and some AAA Clubs about the Museum.

PUBLIC RELATIONS: Co-chairman Bill Smith reported that they had attended the Western Reserve Show in Cleveland in October and that it had been nice. In November they attended the Dearborn, Michigan Show and had done well. In February they had attended the Sparkling Clearwater Show in Pinellas Park, Florida, and had done very well.

STUDY GROUP ADVISORY: Chairman Judy Momirov stated that if anyone wanted to start a Study Group, to please write to her at the club post office box, and she would help all she could.

OLD BUSINESS: J.D. Hanes reported that work was going slow on the Pritchard-Laughlin Civic Center in Cambridge. He reported that they had been doing some tile work for the sewer system and for the storm drains. He also reported that the contract for construction had been let and that construction was to begin in April of 1991, with a completion date of 12 to 14 months from the time of the start of construction. This would put the date for the earliest that we could use the facility in 1992, but more likely 1993 for Convention.

President Nye then reported on the Fund Raising Drive. He stated that the fund raising drive had begun two years ago tonight. The goal had been to raise \$100,000.00. So far,

the total given was \$18,424.50. This total is subject to adjustment. The breakdown of the total is approximately \$11,800.00 in cash; approximately \$3,800.00 in glass and paper items; and approximately \$2,800.00 in other donations.

President Nye then explained the delay in the issuing of the "Committed to Cambridge" award signs. The delay was caused by the condition of the mould and he asked everyone to please be patient as they would be shipped as soon as we get them.

President Nye then showed the item for the Grand Prize. It is a 8½", pink, Two-Kid flower holder. He stated that all those who had given the full amount to the Fund Drive were eligible to be in the drawing for the grand prize. President Nye asked Mary Martha Mitchell to draw the name for the prize. The prize went to Joanne Paul, Newark, Ohio.

NEW BUSINESS: Charles Upton told of his proposed amendment to the Constitution of the club. This will be printed in the May issue of the CRYSTAL BALL, to be voted on at the Annual Meeting in June.

Mike Arent raised the question of asking the Smithsonian Institute, since they are no longer going to have American glass on permanent display, if they would loan any or all of their Cambridge glass to our Museum. This could be used as a good marketing tool. Discussion followed. Mark Nye will check on this.

Bud Walker thanked those who had written letters to the Smithsonian Institute and those who also wrote to their Congressmen and Senators. He reported on different clubs and groups that had been involved in this. Bud then stated that it was his understanding that they were going to leave about 100 pieces of glass on display in the Museum, but also let the foreign ceramics stay.

Don Armbrecht asked about continuing communications with the Smithsonian and of their response.

Bud Walker explained that there had been some response and that he would be going to the Smithsonian.

Anna Walker asked about putting a reminder in the CRYSTAL BALL and a "Thank You" to those who had written.

continued on page 8

CLUB NEWS continued from page 7

Mary Kuhlman asked about having a petition for people to sign.

Reba Embree suggested that maybe a petition signing could be held at the Courthouse in Cambridge to get more signatures.

Phyllis Smith suggested having an article in the Cambridge Jeffersonian to promote awareness.

Rich Bennett told about the interest in the factory after the article with a picture had appeared in the Jeffersonian when the factory was torn down. Discussion followed. Rich Bennett was selected to be the chairman of a committee to look into the petition and article for the Jeffersonian.

A motion to adjourn was made by Frank Wollenhaupt at 8:40 pm. Motion carried. Meeting adjourned.

"Show & Tell" and an Auction Preview was given by Lynn Welker.

J.D. Hanes, Recording Secretary

Study Club News

STUDY GROUP #13 - SOUTH WEST OHIO "MIAMI VALLEY, OHIO"

The Miami Valley (Ohio) Study Group held their meeting February 12th, at the Huber Heights Public Library. There were eight members present.

There was more discussion regarding a fund raiser toward our contribution to NCC in June; and the Christmas gift exchange was approved.

Our program was the NCC Caprice slide program narrated by Norma Hufford.

"Show & Tell" included a gold krystal 4-section relish E. Apple Blossom in fancy brass holder; crystal 2-lite Mt. Vernon candlesticks with ball in center; crystal Caprice 3-lite stairstep candlestick E. Chantilly; pink favor vase/cordial; #1066 wine with crystal stem and emerald green bowl; crystal doorknob with purple cast; pink mushroom shaped flower frog - not Cambridge; #1066

cordial with crystal stem and amber optic bowl; and tall, round Yardley jar with pink spray on outside - may not be Cambridge.

PERSONNEL CHANGES

Over the winter changes have occurred within the NCC, Inc. organization and we would like to bring all of our members up to date regarding these changes.

First, longtime member Janice Hughes, in order to have more time to pursue other interests, has resigned from the NCC Board of Directors. On an interim basis, her seat will be filled by another familiar member, Joe Andrejcek. The term of office for the seat Janice held expires this June and a permanent replacement will be elected by the membership in the upcoming elections.

Mildred Hughes has decided she has worked long enough and so retired from her position as NCC Museum attendant. J. D. Hanes has been hired to be her replacement and will also continue in his position of corresponding secretary for the Club. In order to do this, J.D. has resigned his elected office of NCC Secretary. The Board of Directors elected Joe Andrejcek to the position of NCC Secretary for the balance of the 1990-91 year.

Bill Smith, who apparently is busier now than he was before he retired, has given up his position as chairman of the Publications committee. For the time being, that position remains unfilled.

Over the years, the NCC, Inc., has seen many changes, but what remains unchanged is our commitment to the study and preservation of the glass produced by the Cambridge Glass Company, Cambridge, Ohio.



If Spring is here, can the
1991 Convention
be far behind?

MAKE YOUR PLANS NOW
and we'll see you
JUNE 27 - 30

1906 CAMBRIDGE CATALOG

The following four pages are being reprinted here from the 1906 Cambridge Glass catalog.

Pressed Jugs.

SCALE, HALF SIZE.



No. 2521 Pitcher.
Capacity, 32 ounce.
Packed 2 1/4 dozen in a barrel.



No. 2625 Pitcher.
Capacity, 32 ounce.
Packed 2 1/4 dozen in a barrel.



No. 2618 Pitcher.
Capacity, 32 ounce.
Packed 2 1/4 dozen in a barrel.



No. 2619 Pitcher.
Capacity, 32 ounce.
Packed 2 1/4 dozen in a barrel.

Pressed and Blown Jugs.

SCALE, HALF SIZE.



No. 2579 Quart Jug.
Packed 2½ dozen in a barrel.



No. 91 Half Pint Pitcher.
Packed 12 dozen in a barrel.



No. 91 Pint Pitcher.
Packed 6 dozen in a barrel.



No. 91 Half Gallon Rebecca Jug.
Packed 1½ dozen in a barrel.



No. 91 Quart Pitcher.
Packed 3 dozen in a barrel.

Blown Water Bottles.



No. 2617 Pressed Finger Bowl.
Packed 12 dozen in a barrel.
Cut, Half Size.



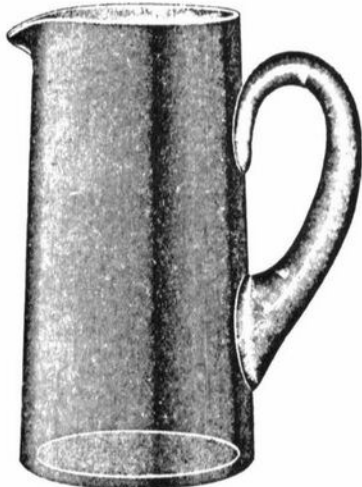
No. 1216 Water Bottle.
Packed 3 dozen in a barrel.
Cut, One-third Size.



No. 1215 Blown Water Bottle.
Packed 3 dozen in a barrel.
Cut, Half Size.

Blown Tankards.

SCALE, HALF SIZE.



No. 95 Pint Tankard.
Packed 6 dozen in a barrel.



No. 95 Quart Tankard.
Packed 3 dozen in a barrel.



Five Pint Vinegar Jug.
Graduated or Plain.
Packed 1 1/4 dozen in a barrel.



No. 95 Half Gallon Tankard.
Packed 2 dozen in a barrel.

CONVENTION PREVIEW

by PHYLLIS D. SMITH

During the Quarterly Meeting held Friday evening, March 1st, Convention Chairman Marybelle Moorehead announced that plans are moving right along and shaping up very well, for this year's Convention.

Activities will follow much the same format as previous years, with activities beginning on Thursday evening, June 27th and ending Sunday afternoon, June 30th. As always, there will be much to do Convention weekend. Included in the activities will be: parties; seminar/slide presentations; the beautiful Antique Show beginning on Friday evening and running thru Sunday; the Saturday morning Flea Market; Speakers; Banquet; "Show & Tell"; Annual Meeting; and much, much more!

Marybelle announced that our speakers for the weekend will include: Frank Wollenhaupt for our Saturday morning breakfast; and Frank Maloney and George Fogg for our Saturday evening Banquet. All three men have spoken to us in years past and are being brought back by popular demand. Their topics and additional information will appear in next month's C.B.

A tentative Schedule of Events, as well as the Convention Registration form, will be included in the May CRYSTAL BALL. So be sure you start making your plans now and get your reservations in early. You won't want to miss out on any of the FUN. See you there!

RETIRE FROM CAMBRIDGE GLASS CO.

(This little article was printed in the Daily Jeffersonian, Cambridge, Ohio, Jan. 24, 1954 and was sent to us by ROSE McAFEE.)

"Mr. & Mrs. Arthur Dingus of 2015 Central Ave. (Cambridge) have taken their rightful places on the retirement list after serving numerous years at the Cambridge Glass Co.

Mr. Dingus, age 71, was employed back in 1929 and worked in the hot metal department during his entire career at the plant. Mrs. Dingus, 65, also started in 1929 but retired a few years later. She was called back to work during the wartime rush in 1942. She washed and shined glassware. The Dingus couple retired officially on Nov. 2."

MOTEL INFO

There are several motels in the Cambridge and surrounding area. If you would like information on these, as well as local activities and points of interest, you can receive a FREE brochure by writing to:

Cambridge/Guernsey County
Visitors & Convention Bureau
2250 Southgate Parkway
Cambridge, OH 43725

Please mention that you are a member of National Cambridge Collectors, and PLEASE send a large SASE with your request.

ENJOYING LIFE TO THE FULLEST

by PAUL WHITE

Forgive me if I seem to have
More fun than I deserve;
If nothing I have done has earned
The right to throw a curve.
To bounce back to enjoyment
From a day that's far from sweet.
To fall asleep relaxing
After having too much to eat.
If you think my contentment
Is a fake, not really true
Just remember I enjoy it all,
It's mostly because of you.
You said "Hello" when you met me -
Smiled like you meant it too,
"Good morning." took on meaning
And all my trouble flew.

Interested in a STUDY CLUB??

If you are interested in starting a Study Group in your area of the country, then Study Group Advisor Judy Momirov is interested in hearing from you.

It only takes three N.C.C. members, with an interest in learning more about Cambridge Glass, to get started. Why not drop Judy a note today. Her address is:

Judy Momirov, N.C.C. Study Group Advisor,
P.O. Box 416, Cambridge, OH 43725

Museum Activities

by J. D. HANES

This is the first, in what I hope will be a continuing series of articles to keep all of you informed as to what is occurring with your museum.

The Museum opened for the season, on Friday March 1st. By this time, all of the glass for the Auction had been loaded into a van and we were ready for our first visitors. Marybelle Moorehead, Lynn Welker and myself had spent numerous hours getting the Museum cleaned and some displays changed for this year. We hope to have some more displays changed before Convention. Now, to tell you of some of the changes already made.

Since the Convention theme this year is "Candlesticks" we moved all of the candlesticks and candelabra out of the wall case in the back room and into three of the free standing showcases in the middle of the room, in order to highlight them. With the lights in the tops of these showcases, it has really made the candlesticks attractive.

So far, that is the only major change in a display. Other minor changes were additions to the crown tuscan display, the cordial display, rearranging in the nude case, and two new additions in the experimental case.

I would like to tell you about the additions to the experimental case. The first is a #3400 line creamer in a opaque orange. It is the same color as the experimental stem in #3121 line. It is a very outstanding color. The other item is a rose bowl shaped item in cased glass. Many of us did not realize that Cambridge had tried cased glass. This item is milk glass, with tahoe blue and crystal. It is very thick, not like high quality cased glass. Anyway, we are very fortunate to have this item on loan and I ask you to please note it if you get to visit the Museum this year.

During Auction, we did receive some very nice donations to the Museum. I hope to each month list donations of glass or paper items that are received for the Museum. The items that we received at Auction and the donors are:

Willard Kolb: #1337 crystal cigarette holder w/ashtray foot, etched Elaine.
Elmer & Ida Martens: Special articles #151

11" and #353 8" plates in ivory; and a #3116 2½" ftd. tumbler engraved #897 Candlelight.

Jim Curnutt: #65 ivory Doric Column candlestick.

Paul White: Smoke Georgian flared candy made from a 9 oz. Georgian and a Jenny Lind amber bowl that is shaped like the basket but without a handle.

Suzanne Smith: #3011 flared comport with a carmen bowl and crystal stem and foot.

That should have you up-to-date on what is going on with your Museum. Since this is a new feature, I would like to know what all of you would like to hear about concerning the museum. Please send a letter or card, to the post office box, with your ideas for future features in this article.

Remember that this is your Museum and we will always accept any kind of input, compliments or criticisms.

Until next time, keep your eyes open for that special piece of Cambridge.

1991 AUCTION LIST CORRECTIONS

(indicated on the Auction Results with an *)

- 9. tiny chip on base
- 43. tiny nick on rim
- 52. chip under lid of both
- 79. chip on handle
- 93. chip on rim
- 100. 12 oz. instead of 5 oz.
- 114. 2 instead of 1
- 266. 7 instead of 8
- 285. 6 instead of 5
- 318. #732 etch instead of #723
- 323. scratched
- 330. 2 instead of (4)
- 335. broken in shipment, not sold

- 40A #21 heatherbloom Mt.Vernon 5 oz. ftd. tumbler.
- 292A #3400 Rosepoint 10" cake plate

1991 CONVENTION HEADQUARTERS

THE SHENANDOAH INN
P.O. Box 147
Old Washington, OH 43768

For Reservations
Phone: 614/489-551

1991 AUCTION RESULTS

1. \$ 20.00	61.\$ 27.50	121.\$ 22.50	181.\$ 45.00	241.\$ 16.00	301. \$ 30.00
2. 20.00	62. 27.50	122. 100.00	182. 175.00	242. 12.50	302. 25.00
3. 102.00	63. 17.50	123. 60.00	183. 60.00	243. 62.50	303. 40.00
4. 56.00	64. 12.50	124. 120.00	184. 95.00	244. 40.00	304. 15.00
5. 47.00	65. 24.00	125. 40.00	185. 70.00	245. 80.00	305. 20.00
6. 24.00	66. 20.00	126. 56.00	186. 55.00	246. 80.00	306. 12.50
7. 24.00	67. 65.00	127. 28.00	187. 45.00	247. 95.00	307. 17.50
8. 9.00	68. 25.00	128. 15.00	188. 50.00	248. 100.00	308. 17.50
9.* 7.00	69. 17.50	129. 30.00	189. 30.00	249. 140.00	309. 24.00
10. 17.00	70. 95.00	130. 25.00	190. 100.00	250. 135.00	310. 35.00
11. 13.00	71. 20.00	131. 20.00	191. 150.00	251. 35.00	311. 40.00
12. 22.50	72. 30.00	132. 185.00	192. 50.00	252. 70.00	312. 50.00
13. 54.00	73. 35.00	133. 120.00	193. 35.00	253. 80.00	313. 25.00
14. 42.50	74. 30.00	134. 15.00	194. 35.00	254. 7.50	314. 45.00
15. 35.00	75. 10.00	135. 22.50	195. 25.00	255. 45.00	315. 25.00
16. 50.00	76. 100.00	136. 20.00	196. 48.00	256. 20.00	316. 25.00
17. 75.00	77. 55.00	137. 7.00	197. 55.00	257. 36.00	317. 25.00
18. 35.00	78. 55.00	138. 40.00	198. 20.00	258. 140.00	318.* 10.00
19. 20.00	79.* 30.00	139. 25.00	199. 20.00	259. 40.00	319. 20.00
20. 55.00	80. 40.00	140. 18.00	200. 30.00	260. 50.00	320. 30.00
21. 27.50	81. 10.00	141. 85.00	201. 80.00	261. 140.00	321. 17.50
22. 25.00	82. 35.00	142. 45.00	202. 100.00	262. 12.50	322. 30.00
23. 55.00	83. 25.00	143. 25.00	203. 120.00	263. 40.00	323.* 35.00
24. 27.50	84. 55.00	144. 36.00	204. 105.00	264. 40.00	324. 25.00
25. 22.50	85. 35.00	145. 27.50	205. 60.00	265. 35.00	325. 15.00
26. 22.50	86. 110.00	146. 280.00	206. 200.00	266.* 87.50	326. 20.00
27. 25.00	87. 55.00	147. 32.50	207. 27.50	267. 30.00	327. 40.00
28. 25.00	88. 27.50	148. 35.00	208. 45.00	268. 35.00	328. 35.00
29. 50.00	89. 10.00	149. 22.50	209. 225.00	269. 40.00	329. 30.00
30. 32.50	90. 45.00	150. 25.00	210. 137.50	270. 20.00	330.* 10.00
31. 15.00	91. 35.00	151. 27.50	211. 60.00	271. 115.00	331. 20.00
32. 50.00	92. 50.00	152. 25.00	212. 40.00	272. 25.00	332. 22.50
33. 130.00	93.* 8.00	153. 17.50	213. 35.00	273. 80.00	333. 15.00
34. 27.50	94. 20.00	154. 10.00	214. 50.00	274. 40.00	334. 25.00
35. 130.00	95. 30.00	155. 55.00	215. 140.00	275. 35.00	335.*
36. 32.50	96. 80.00	156. 25.00	216. 110.00	276. 75.00	336. 20.00
37. 33.00	97. 17.00	157. 20.00	217. 25.00	277. 75.00	337. 45.00
38. 7.50	98. 45.00	158. 22.50	218. 350.00	278. 75.00	338. 35.00
39. 55.00	99. 30.00	159. 50.00	219. 50.00	279. 35.00	339. 15.00
40. 90.00	100. 12.00	160. 50.00	220. 105.00	280. 55.00	340. 12.50
41. 155.00	101. 20.00	161. 30.00	221. 105.00	281. 100.00	341. 75.00
42. 65.00	102. 40.00	162. 10.00	222. 45.00	282. 80.00	342. 5.00
43.* 17.50	103. 30.00	163. 20.00	223. 50.00	283. 5.00	343. 12.50
44. 25.00	104. 30.00	164. 30.00	224. 30.00	284. 6.00	344. 25.00
45. 52.50	105. 40.00	165. 75.00	225. 85.00	285. 135.00	
46. 30.00	106. 22.50	166. 22.50	226. 150.00	286. 50.00	40A.*35.00
47. 35.00	107. 15.00	167. 20.00	227. 250.00	287. 85.00	292A.*95.00
48. 55.00	108. 70.00	168. 25.00	228. 600.00	288. 60.00	- - - - -
49. 36.00	109. 75.00	169. 45.00	229. 200.00	289. 30.00	* = Auction
50. 50.00	110. 70.00	170. 12.50	230. 55.00	290. 70.00	Corrections
51. 45.00	111. 15.00	171. 17.50	231. 80.00	291. 85.00	
52.* 57.50	112. 17.50	172. 5.00	232. 55.00	292. 40.00	see
53. 25.00	113. 30.00	173. 7.50	233. 30.00	293. 90.00	previous
54. 20.00	114.* 40.00	174. 35.00	234. 50.00	294. 15.00	page
55. 35.00	115. 8.00	175. 35.00	235. 175.00	295. 77.00	
56. 10.00	116. 80.00	176. 22.50	236. 15.00	296. 30.00	
57. 30.00	117. 22.50	177. 70.00	237. 17.50	297. 40.00	
58. 35.00	118. 27.50	178. 75.00	238. 45.00	298. 40.00	
59. 30.00	119. 30.00	179. 75.00	239. 8.00	299. 130.00	
60. 35.00	120. 20.00	180. 72.00	240. 90.00	300. 50.00	

— Classified —

WANTED: Adonis pattern Rock Crystal (manufactured by Cambridge). Seeking 12 of each item. Must be in Mint condition. Please write to **Steven Jackoski**, 31 Lafayette St., Hudson Falls, NY 12839, even if you have only one piece. Also looking for the Cordelia pattern.

FOR SALE: Crystal Caprice. Ball pitcher, 8 place settings and several serving pieces. Make offer. **Don Ludwick**, P.O. Box 899, Coshocton, OH 43812. Phone: 614/622-5363

FOR SALE: RC Engraved Laurel Wreath. #556 salad plates (8); round saucer; #3400/100 76 oz. pitcher; #674 13" bowl; 3-section oval relish tray; 6" ftd. bowl; stemmed compote; sugar & cream. For information write: **Martha Slater**, 2206 N. Laurel Ave., Phoenix, AZ 85007 or call collect 602/271-4765.

Memory tempers prosperity, consoles adversity, cautions youth and delights old age.

16th Annual



**NATIONAL
CAMBRIDGE
COLLECTORS**

ANTIQUÉ SHOW & SALE

(& 18th Annual NCC Convention)

SHENANDOAH INN
INTERSTATE 70 · EXIT 186 · 7 MILES EAST OF
CAMBRIDGE, OHIO

JUNE 28, 29, 30, 1991

HOURS	
FRIDAY, JUNE 28th (PREVIEW ADMISSION \$3.50)	5:00-8:00
SATURDAY, JUNE 29th	11:00-5:30
SUNDAY, JUNE 30th (ADMISSION \$2.00)	11:00-4:00

OFFERING **CAMBRIDGE AND OTHER FINE GLASSWARE**
Including *Wesley, Imperial, Periton, Duncan, Tiffin, etc.*



ROBERT W. RILEY

P. O. BOX 4180, SPRINGFIELD MA 01101
Phone: 413/737-0884 8 pm - 12 midnight EST

P & I EXTRA

CRYSTAL

- #1108 Mandolin Lady.....\$ 150
- #32 Rams Head candlesticks,
etched Minerva.....\$ 150
- #3500/15 Heirloom, ind. cream
and sugar.....\$ 25
- #663 3-lite epergnes, pair.....\$ 135

AMBER

- #849 Two-Kids.....\$ 175
- #22 Mt.Vernon 3 oz. tumbler.....\$ 20
- #4 Heirloom 9" bowl.....\$ 25
- Stradavari/Regency cordial.....\$ 40
- 9" Honeycomb bowl (big mark).....\$ 25
- Honeycomb comport.....\$ 25
- #1337 cigarette holder.....\$ 35

PINK

- #3500/26 Rams Head 12" basket
w/#32 Rams Head candlesticks...\$ 250
- #9 Heirloom 10" comport.....\$ 30
- #1 Heirloom sugar.....\$ 25

NEARCUT

- #2760 6½" ftd. oval banana split..\$ 25
- #2760 tall celery holder.....\$ 25
- #2760 arch foot, 9" ruffled bowl..\$ 35

MISCELLANEOUS

- #512 Rose Lady, light emerald....\$ 150
- #1238 12" keyhole vase, royal
blue.....\$ 75
- #145 7 oz. marmalade w/cover,
royal blue.....\$ 40
- #33 4" shells, crown tuscan (4)
each.....\$ 10
- #628 3½" candlestick, m. blue....\$ 20
- Stradavari/Regency cordial,
moonlight blue.....\$ 50
- #22 Mt.Vernon 3 oz. tumbler,
forest green.....\$ 20
- #1401 Jefferson tall sherbets,
6 oz., forest green (6) set....\$ 40
- #22 Mt.Vernon 3 oz. tumbler,
carmen.....\$ 20
- #319 Georgian sherbets, gold
krystal (6) each.....\$ 12
- #94 Sweet Pea vase, helio, w/gold
floral band.....\$ 45
- #54 7" comport, azurite.....\$ 28
- #3400/13 sugar w/chrome hdl.
amethyst.....\$ 35

COLUMBUS ANTIQUE FLEA MARKET

(ANTIQUES AND COLLECTIBLES)

APRIL 7th

Ohio State Fairgrounds—Lausche Building—Off I-71 Exit 17th Ave.

SUNDAY ONLY—7:00 AM TO 4:00 PM

1991 SCHEDULE 1991

MAY 5th

SEPT. 8th • OCT. 6th • NOV. 10th • DEC. 8th

**10TH
YEAR**

**10TH
YEAR**

150 Quality Dealers

Show admission \$1.50 • Children under 12 free

Heated/Air Conditioned • Concession



*"The Friendly
Family Business"*

4214 North High Street, Columbus, Ohio 43214
(614) 267-8163 (614) 263-6830 (614) 885-2352

NATIONAL CAMBRIDGE COLLECTORS

FLEA MARKET

SATURDAY - JUNE 29, 1991

6 AM - 12 NOON

OLD WASHINGTON MIDDLE SCHOOL
in the heart of downtown
OLD WASHINGTON, OHIO

For contract or additional information
write to: N.C.C. Flea Market Chairmen,
Marlene & Harold Snyder, P.O. Box 416,
Cambridge, OH 43725

Aladdin

ELECTRIC LAMPS, 1930-1956

ALADEX • VELVEX • OPALIQUE • ALACITE

Deluxe Hardbound - Color - 229 pages
\$24.95 ppd. - Add \$3 for first class

Order your Book from the Author:

J.W. COURTER

R-1 • Simpson, IL 62985

ADVERTISE IN THE CRYSTAL BALL

Have you looked everywhere and still can't find that piece of Cambridge glass you need to fill a spot in your collection? Why not try a Classified Ad in the CRYSTAL BALL. For 10¢ a word (minimum \$2 - see page 2 for other rates) you just might find what you are looking for. Of course the same applies, if you have something to sell.

We have a few openings in our Dealers Directory - only \$18 for one year - 12 issues. Why not give it us a try?

L. A. MANESS

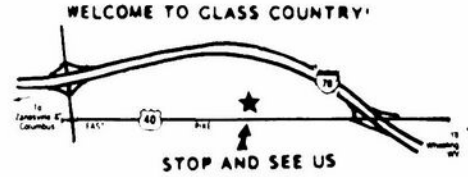
RT. 1, BOX 552, ASHLAND, VA 23005
(804) 798-1825

C = MARKED UPS \$3.50 CTN

- | | |
|---|--------|
| #1321 28 oz. Decanter, amethyst w/crystal stopper..... | \$ 49 |
| #3400/91 3-part, 8" relish, amber w/Cleo etching C..... | \$ 52 |
| Chantilly etched, 2-lite candlesticks, pair..... | \$ 60 |
| Pristine 8" plates, pink (8) C ea. | \$ 10 |
| Round 9½" plates, green w/#520 etching (8) C each..... | \$ 15 |
| <u>Caprice - Blue</u> | |
| #154 6" square bon bon, hld..... | \$ 35 |
| #179 32 oz. Ball pitcher..... | \$ 295 |
| #26 4-ftd. 11½" plate with scalloped edge..... | \$ 62 |
| #124 3-part 8½" relish..... | \$ 40 |

VISA/MASTERCARD WELCOME

Stage Coach Antique Mall



RT. 40 ONE-HALF MILE WEST OF I-70 EXIT 8164
MANY DEALERS - WIDE SELECTION - PLENTY PARKING

WE FEATURE GLASSWARE OF:
CAMBRIDGE, HEISEY, FENTON, & FOSTORIA
Plus Art Pottery & a General line of Antiques

DORIS AND ROY ISAACS
BUY AND SELL
614-872-3720



7525 EAST PIKE
NORWICH, OHIO 43767

MON THRU SAT 10-5:30 SUN 12-5:30
SUMMER EVENING HOURS BY CHANCE

SPRINGFIELD Antique Show & Flea Market

Clark County Fairgrounds

SPRINGFIELD, OH

Exit 59 on I-70

400-800 DEALERS

INSIDE AND OUTSIDE

Ohio's largest year round show with an emphasis on quality antiques

9:00 AM - 5:00 PM

Admission \$1.00

Children under 12 FREE

NEXT SHOW

APRIL 20 & 21, 1991

1991 SHOW DATES		
MAY	17-18-19	Extravaganza
JUNE	15-16	Inside & Outside
AUGUST	17-18	Inside & Outside
SEPT.	20-21-22	Extravaganza
OCT.	19-20	Inside & Outside

R. Bruce Knight, MGR.

For Information Write
P.O. Box 2429, Springfield, OH 45501
Phone (513) 325-0053

The **DAZE** Inc.

***SPECIAL OFFER**
to NCC friends \$2. off
the 1 year subscription
price when on this form
or copy of.

The Original National monthly newspaper dedicated to the buying, selling & collecting of colored glassware and china including Depression Glass and the Elegant Glass (Cambridge, Heisey, Fostoria, etc.) We educate and inform you each month with feature articles by top notch columnists, readers "finds", club happenings, show news and a multitude of ads. Find those missing pieces to your 30s, 40s or 50s pattern. Can't identify it? Perhaps we can help "Keep up with what's happening with a subscription to the DAZE. Buy, sell or trade from the convenience of your easy chair.

Name _____ Street _____

City _____ State _____ Zip _____

1 yr \$19 2 yrs \$37 \$2. Single Current Copy

Exp date _____ Card No. _____

Signature _____

Orders to D.G.D., Box 57NC, Otisville, MI 48463

Please allow 30 days for your first issue - Canadian subscribers, add \$1. per year and subscribe by charge card only! This Special Offer may not be combined with any other special offer.

DEALERS



DIRECTORY

NOTE: When writing to the Dealers listed here, please enclose a SASE!

<p>SANDY'S ANTIQUE MALL 617 Wheeling Ave. Cambridge, OH 43725 Phone 614/432-2570</p> <p>COLLECTOR'S ITEMS Summer 9 - 6 Daily * Winter 9 - 4:30 Mon - Sat</p>	<p>BENICIA ANTIQUE SHOP 305 First Street Benicia, California 94510</p> <p>OPEN 11 AM - 5 PM Closed Monday</p> <p>Z. E. LOPES 707-745-0978</p>	<p>THE MUTED SWAN ANTIQUES 5486 Peachtree Rd. Chamblee, GA 30341 Heart of Chamblee Antique Row</p> <p>Specializing in Cambridge, Heisey and Fostoria Bill & Pat Miller 404-451-7620</p>
<p><i>YOU CAN ADVERTISE YOUR ANTIQUE SHOP HERE!</i></p>	<p>VISIT HISTORIC BENICIA and its 28 shops</p> <p>Off Interstate #80 North of San Francisco</p>	<p>Elegant Depression Era Glassware</p> <p>ABBA ANTIQUES 1157 Charlie Lane Lilburn, GA 30247 Bill & Barbara Adt (404) 279-1942 Shows, Mail Order, & by Appointment</p>
<p>THE GLASS URN 456 West Main Street, Suite G. Mesa, AZ 85201 602 / 833-2702</p> <p>Mail Order Shows Open Shop CAMBRIDGE, FOSTORIA, HEISEY, ETC.</p>	<p>ANTIQUES ON THE MALL SPECIALIZING IN CAMBRIDGE GLASS</p> <p>Stagecoach Mall - Bldg. 3 - Norwich, OH Virginia Bennett 614/432-4483 64183 Warne Drive, Cambridge, OH 43725</p>	<p><i>YOU CAN ADVERTISE YOUR ANTIQUE SHOP HERE!</i></p>
<p>ETTELMAN'S DISCONTINUED CHINA & CRYSTAL Cambridge a Specialty</p> <p>P.O. Box 6491-CB Corpus Christi, TX 78466 Phone (512) 888-8391 Include S.A.S.E.</p>	<p>D & D ANTIQUES Columbus, Ohio</p> <p>DICK SLIFKO SHOWS ONLY</p>	<p><i>YOU CAN ADVERTISE YOUR ANTIQUE SHOP HERE!</i></p>
<p>THE GLASS CUPBOARD 39 Shire Oaks Drive Pittsford, New York 14534</p> <p>Marcia Ellis Cambridge, Duncan Miller (716) 586-7596 Shows, Mail Order, Appt.</p>	<p>JUDY'S ANTIQUES Judy Bennett 422 S. Ninth Street (Corner of Jefferson) Cambridge, Ohio 43725</p> <p>BUYING Ph. 614-432-5855 SELLING Cambridge Glass my Specialty</p>	<p>"HAPPINESS IS" - THE STULTZS 3106 Warren Court Glen Allen, VA 23060</p> <p>SHOWS & MAIL 804-872-8102 (RICHMOND AREA) AMERICAN MADE GLASS CIRCA 1890-1960</p>
<p><i>YOU CAN ADVERTISE YOUR ANTIQUE SHOP HERE!</i></p>	<p>GREEN ACRES FARM 2678 Hazelton Etna Rd., Pataskala, OH 43062 (State Route 310 North)</p> <p>Sat. & Sun. 1-7 PM 614/927-1882 Antiques, Crystal Glass and Collectibles</p>	<p>CROW'S NEST ANTIQUES Constance Crow Buying & Selling Elegant Depression Era Glassware</p> <p>Austin Antique Mall 8822 McCann Austin, TX 78758 (512) 371-0244</p>
<p>THE HITCHING POST 7467 S. R. 88 Ravenna, OH 44266</p> <p>Ph. 216-296-3686 D. McDaniel CAMBRIDGE — HEISEY — GENERAL LINE</p>	<p>PATCHES OF VIRGINIA Specializing in China and Glass Virginia T. Houston</p> <p>34116 Roberts Rd., Eastlake, OH 44095 Phone: (216) 975-8315</p>	<p>CRYSTAL LADY 1817 Vinton St., Omaha, NE 68108</p> <p>Joann D. Hagerty Bus. (402) 341-0643 Res. (402) 391-6730 Specializing in Elegant Glass & Collectables</p>
<p><i>YOU CAN ADVERTISE YOUR ANTIQUE SHOP HERE!</i></p>	<p>REMEMBRANCES 7597 Daphne Dr., No. Syracuse, NY 13212</p> <p>Shirley S. Ladouceur 315 / 458-5297</p> <p>ANTIQUES and COLLECTIBLES MAIL ORDER SHOWS APPOINTMENTS</p>	<p>MARGARET LANE ANTIQUES 2 E. Main St., New Concord, OH 43762 Lynn Welker 614/826-4418</p> <p>CAMBRIDGE GLASS MATCHING SERVICE Hours Mon.-Fri. 1-5 PM or by Appointment</p>
<p>GLASS RESTORATION</p> <p>BRILLIANT CRYSTAL ELEGANT DEPRESSION</p> <p>DON & LYNNE WORMLAND MT. CLEMENS, MICH. (313) 791-9191</p>	<p>WATKINS (Fine Quality) CAMBRIDGE GLASS SHOP 1429 Marquand Ave. (Corner of Woodlawn) Cambridge, OH (614) 432-4460 Lana Watkins</p>	<p>HELEN & JIM KENNON Heisey, Cambridge, Fostoria, Duncan, Imperial, Fenton, Tiffin P.O. Box 114 Brookville, OH 45309 PH: (513) 833-5406 SHOWS ONLY</p>

Have More Fun Collecting Glass - Join A National Glass Club Become More Knowledgeable About Your Collectable Glass

The national glass collecting clubs listed below have each been organized to serve you, the collector. Each club is dedicated to the education of the collector, and the preservation of their particular type or manufacture of glassware. Each would appreciate the opportunity to help you achieve more satisfaction from your collection.

If you are interested in membership in any of these organizations, check the list below. The appropriate club(s) will acknowledge your application with either a membership card (if remittance is enclosed) or additional information as required. MAIL TO:

NATIONAL GLASS CLUBS
P.O. BOX 826, MOUNDSVILLE, WV 26041

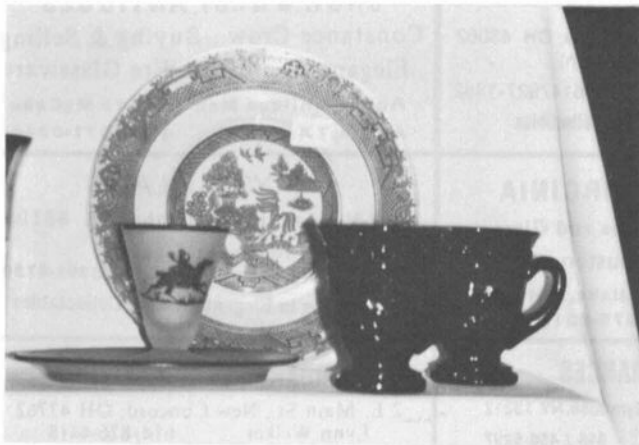
My Name Is _____
Address: _____
City: _____ State: _____ Zip +4 _____

I am interested in the following club(s):

- Fenton Art Glass Collectors of America, Inc. \$15.00
- Fostoria Glass Society of America, Inc. \$12.50
- Heisey Collectors of America, Inc. \$18.50
- National Cambridge Collectors, Inc. \$15.00
- National Depression Glass Assoc. Inc. \$12.00
- National Imperial Glass Collectors Society \$12.00
- National Duncan Glass Society \$12.50
- Tiffin Glass Collectors Club \$10.00
- Old Morgantown Glass Collectors Guild \$15.00

Please make check payable to the name of the organization you wish to join.

APRIL 1991



1991 ALL-CAMBRIDGE GLASS AUCTION
See complete results on page 15.

NCC Museum of Cambridge Glass

The museum is located on U.S. Route 40, one-eighth mile east of I-77 near Cambridge. Hours: 10 a.m. to 4 p.m., Wednesday through Saturday; noon to 4 p.m., Sunday (March through October). Phone 614/432-4245.
Closed Mondays, Tuesdays, Easter and the Fourth of July.

National Cambridge Collectors, Inc.
P.O. Box 418 Cambridge, Ohio 43725

FIRST CLASS MAIL

FIRST-CLASS MAIL
U.S. POSTAGE
PAID
So. Vienna, Ohio
45369
Permit No. 15

Membership Renewal Notice

This is your **last** issue of the *Crystal Ball*—if the date on your address label reads 4-91.

Please renew now!