



# Cambridge Crystal Ball

Published monthly by the National Cambridge Collectors, Inc.  
to encourage and report the discovery of the elegant and boundless product  
of the Cambridge Glass Company of Cambridge, Ohio

Issue No. 225

January 1992

## President's Message

It is January 1992  
HAPPY NEW YEAR!!

Tax forms are in the mail. Your Auction list is included in this issue (if Lynn survived the flu). The list will whet your appetite and hopefully spur you to plan a trip to glass country for the Auction. The Auction date is Saturday, February 29, 1992. Plan to come on Friday, the 28th and attend the Quarterly Meeting and the Auction Preview. Both events will be held at the Shenandoah Inn, Old Washington, Ohio.

Have you made your lodging reservations for our June Convention? If not, you had better get busy. Ameriflora is being advertised world-wide and Ohio will be the place to be in 1992.

(Editor's Note: Because it is so very important that you make your lodging reservations early, we are running the motel information again this month - see page 3. 1992 Convention dates are: Thursday, June 25th thru Sunday June 28th. Please don't delay!)

The Convention Antique Show chairperson reports space for a few dealers. If you would like to apply for a space, please write to: Mary Beth Hackett, N.C.C. Show Chairperson, P.O. Box 416, Cambridge, OH 43725.

If you have never attended a Convention, this promises to be an exciting year with our move to a brand new Convention Center.

As I write this it is two weeks till Christmas and I have not made that first purchase of

gifts. It is difficult to think ahead to 1992, but I will, just to say, Happy New Year!

On a sad note, we have received word from our dear friends Joyce and W.T. Dawson of Roseburg, Oregon, that their son Randy died last month, following a lengthy illness. Our deepest sympathy is sent to Joyce, W.T., other family members and friends.



by PAUL E. WHITE

It's time to shout "Happy New Year"  
Steal a kiss, ring bells and stuff!  
The only difficulty I see -  
'91 didn't last long enough.  
So many things we planned to do  
Are waiting for '92,  
Just as back in 1990  
We didn't find what we wanted to!  
Our collection has lots of spaces,  
The shelf has room to grow  
And duplicates for the museum  
Have never been packed to go.  
Let's hold the old year till auction,  
See if Lynn can't make it fine,  
And then we can toast the new year,  
If Phyllis can find the time!

# Cambridge Crystal Ball

Official Publication of National Cambridge Collectors, Inc. a non-profit corporation with tax exempt status. Published once a month for the benefit of its members.

Membership is available for individual members at \$15 per year and additional members (12 years of age and residing in household) at \$3 each. All members have voting rights, but only one *Crystal Ball* will be mailed per household.

Back issues of the *Crystal Ball* are available (beginning with Issue No. 1, May 1973) for members only. Cost: \$1.00 each or 12 issues for \$10.00.

## 1991-92 Officers & Committee Chairpersons

President	Joy R. McFadden
Vice-President	Marybelle Moorehead
Secretary	David B. Rankin
Treasurer	David B. Rankin
Sergeant-at-Arms	Judy Momirov
Acquisitions	Joe Andrejak
Budget & Finance	David B. Rankin
By-Laws	Marybelle Moorehead
Convention Facilities	J.D. Hanes, Judy Momirov
Membership	Phyllis D. Smith
Museum--Facilities	Doyle Hanes
Museum--Interior	J.D. Hanes
Non-Glass Items	J.D. Hanes
Nominating	Mark A. Nye
Program	Cynthia A. Arent
Project	R. Clarke West
Publications	Mark A. Nye
Public Relations	Phyllis D. Smith
Publicity	Cynthia A. Arent
Study Group Advisor	Judy Momirov
1992 Auction	Lynn M. Welker
1992 Antique Show	Mary Beth Hackett
1992 Convention	Marybelle Moorehead
1992 Flea Market	Marlene & Harold Snyder
Crystal Ball Editor	Phyllis D. Smith

## Classified Advertising Rates

10 cents per word \$2.00 Minimum

We cannot mix type size in classified advertisements. Abbreviations and initials will count as words. Payment in full must accompany all ads.

## Display Advertising Rates

(Camera-ready ads preferred)	Members	Non-Members
1/8 page	\$6.00	\$10.00
1/4 page	10.00	15.00
1/2 page	18.00	25.00
3/4 page	25.00	35.00
Full page	33.00	45.00

## Dealers Directory

Five-line maximum \$18.00 for 12 months

Cambridge *Crystal Ball* assumes no responsibility for items advertised and will not be responsible for errors in price, description or other information.

Advertising copy, articles, club news and notices must be in our hand by the 10th of each month to assure publication in our next issue.

Paid advertisements containing reproductions or new glass will not knowingly be accepted for publication.

Opinions or information stated in any signed article or letter printed in the *Crystal Ball* are those of the authors and may or may not agree with National Cambridge Collectors, Inc. The Editor reserves the right to refuse and to edit any material submitted for publication to conform with the editorial style of the *Crystal Ball*.

## Please Address All Correspondence to:

National Cambridge Collectors, Inc.  
P.O. Box 416, Cambridge, Ohio 43725

President — Joy R. McFadden, 614/885-2726

Secretary — David B. Rankin, 513/833-4626

Editor — Phyllis Smith, 513/323-3888

N.C.C. Museum — 614/432-4245

Please notify us immediately of any change in your address.

Please enclose an SASE when requesting information.

# CAMBRIDGE GLASS BOOKS FOR SALE

By National Cambridge Collectors, Inc.

- **Colors in Cambridge Glass\***  
128 pages, 60 color plates, fully indexed  
Hardbound with price guide ..... \$19.95
  - **1930-34 Cambridge Glass Company Catalog Reprint\***  
250-page reprint of original catalog  
Paperback with price guide ..... \$14.95
  - **1949-53 Cambridge Glass Company Catalog Reprint\***  
300-page reprint of original catalog  
Paperback with price guide ..... \$14.95
  - **1956-58 Cambridge Glass Company Catalog Reprint\***  
164-page reprint of original catalog  
Paperback ..... \$6.95
- \*For NCC members only, the above publications are available at a 10 percent discount.

By Bill and Phyllis Smith

- **Cambridge Glass 1927-1929**  
66-page reprint of original catalog  
Paperback w/identification guide ..... \$7.95

By Cambridge Buffs Study Group

- **Nearcut**  
108-page reprint of 1910 Cambridge catalog  
Paperback with price guide ..... \$9.95

By Mark A. Nye

- **Cambridge Rose Point**  
94 pages, fully indexed  
Paperback with value guide ..... \$12.95

By Mary, Lyle and Lynn Welker

- **Cambridge Glass Company**  
120 pages of reprints from eight old catalogs  
Paperback ..... \$10.00
- **Cambridge, Ohio Glass in Color II**  
Spiralbound ..... \$5.95

By Harold and Judy Bennett

- **1903 Cambridge Glass Company Catalog Reprint**  
106-page reprint of an original catalog  
Paperback ..... \$7.50

## Address your orders to:

Books  
National Cambridge Collectors, Inc.  
P.O. Box 416  
Cambridge, OH 43725

Please add postage and handling to your order (first book, \$2.00; each additional book, 50 cents). Ohio residents add 6 percent state sales tax.

Dealer discounts available—please write!

## MOTEL INFORMATION

### CAMBRIDGE FAIRDALE INN

6405 Glenn Highway, Cambridge, Ohio 43725. 614-432-2304. Located at the intersection of Interstate 70, Exit 176 and U.S. Routes 22 and 40, two miles west of the Courthouse. Clean comfortable rooms at reasonable rates. Close to The Living Word Outdoor Drama. AAA and Mobile rated, senior citizen rates.

\$25.00 Single, \$30.00 Double. No extra for children. One week cancellation notice. Approximately 6 rooms available.

### DEER CREEK MOTEL AND RESTAURANT

2325 Southgate Parkway, Cambridge, Ohio 43725. 614-432-6391. Located at Exit 178 off of Interstate 70, State Route 209 south. Also Exit 44B on Interstate 77. Pool, color TV, air conditioning and waterbeds. For reservations, call 1-800-637-2917.

\$27.95 Single, \$33.95 Double. \$5.00 extra per person. 24 hour cancellation notice. Approximately 80 rooms available.

### EL RANCHO

6653 Glenn Highway, Cambridge, Ohio 43725. 614-432-2373. Located at Interstate 70, Exit 176, turn right. Five minutes from The Living Word Outdoor Drama. In-room coffee, color cable TV, direct dial telephone. Walking distance to restaurant. AAA, senior citizen and commercial rates.

\$32.50 Single, \$39.50 Double. Over age 12 \$3.00 extra. One week cancellation notice. Additional discount for Thursday-Saturday stay. Approximately 30 rooms available.

### BEST WESTERN CAMBRIDGE

1945 Southgate Parkway, Cambridge, Ohio 43725. 614-439-3581. Located at Exit 178 off Interstate 70. Two story wood constructed building with exterior corridors and entrances. 95 guest rooms, cocktail lounge, 24-hour restaurant, outdoor pool, playground, complimentary morning coffee, free HBO, ESPN and ample parking.

\$49.00 Single or Double. No extra for children. One week cancellation notice. Approximately 50 rooms available.

### HOLIDAY INN-CAMBRIDGE

P.O.Box 1270, Cambridge, Ohio 43725. 614-432-7313. Located at Interstate 70, Exit 178, travel north on State Route 209, 1/16th of a mile to the west side of State Route 209. The Landing Restaurant, The Dockside Lounge, meeting and banquet facilities with seating from 140-240 persons. 107 newly remodeled sleeping rooms. Free Showtime, ESPN, CNN and WTBS.

\$49.00 Single, \$53.00 Double. No extra for children. One week cancellation notice. Approximately 25 rooms available.

### CAMBRIDGE TRAVELODGE

P.O.Box 158, Southgate Parkway, Cambridge, Ohio 43725. 614-432-7375. Exit 178 off of Interstate 70, 48 newly renovated rooms, heated pool, whirlpool, sauna, HBO, ESPN, senior citizen rates, AAA three-diamond rating. Complimentary coffee and doughnuts, restaurants nearby.

10% off prevailing rate. One week cancellation notice. Approximately 15 rooms available.

### DAYS INN CAMBRIDGE

2328 Southgate Parkway, Cambridge, Ohio 43725. 614-432-5691. Located at Exit 178 off of Interstate 70. 103 guest rooms, complimentary continental breakfast. Pool, meeting rooms, king suites, HBO, ESPN, restaurant and lounge adjacent.

\$53.00 Single, Double, Triple or Quad occupancy. Children free. Cancellation policy depends on type of reservation. Approximately 45 rooms available.

Rates do not include 12% sales and bed tax. Remember to mention National Cambridge Collectors for the special rate.

**GUERNSEY COUNTY VISITORS & CONVENTION BUREAU  
2250 SOUTHGATE PARKWAY  
P.O. BOX 427  
CAMBRIDGE, OHIO 43725  
614-432-2022**

# Northwood's Crystal Queen and the Cambridge Connection

by Dr. James S. Measell

Over the past three years, I have been studying the glassmaking career of Harry Northwood, trying to put the finishing touches on the research begun by Bill Heacock about a decade ago. Now that the first book is on the market and the second soon to be published, I am pleased to report on Northwood's Crystal Queen pattern and its relationship to the Cambridge Glass Company.

This rather ornate pressed pattern was first made at the Northwood Glass Company in Indiana, Penna., in early 1897. By this time, Harry Northwood was well-established as an American glassmaker. He emigrated to the United States in 1881, and, after working at three different plants -- Hobbs-Brockunier, the LaBelle Glass Co., and the Phoenix Glass Co. -- he established a firm at Martins Ferry in 1888. This enterprise flourished, and Northwood and his fellow investors relocated to larger quarters in the burgeoning town of Ellwood City, Penna., to reopen a glass factory there which had been idle for several years.

Northwood's Indiana based plant soon made its mark in the tableware industry, both financially and artistically. Northwood made opalescent glass in several colors, and he developed Ivory glass (collectors call this "custard" today). A number of interesting patterns were

developed: ruby opalescent glass was popular in the Opaline Brocade (Spanish Lace) motif, and Ivory glass was made in patterns such as Intaglio, Louis XV, Nautilus (Argonaut Shell) and Pagoda (Chrysanthemum Sprig).

The Crystal Queen pattern was Northwood's first venture into pressed glass at Indiana, and it was introduced with considerable fanfare. A January 1897 issue of "China, Glass and Lamps" carried this report: "In pressed crystal tableware, which is a new departure with this company, the new pattern is an imitation cut line, made in excellent metal, which is well shown by the light in-cut lines of the pattern. The Crystal Queen, as the new line was called, has been decorated in gold, and shows off royally, as becomes her imperial majesty." The year 1897 was, of course, the 60th anniversary of Queen Victoria's ascension to the throne, so there is little doubt about the line's namesake.

The new Crystal Queen line, which was said to embrace some 125 pieces, was touted with full page advertisements in three consecutive issues of "China, Glass and Lamps" (January 13, 20 and 27, 1897), and ads were carried in "Glass and Pottery World." The February 10, 1897 issue of "China, Glass and Lamps" devoted considerable column space to extolling the  
continued on page 7

HARRY NORTHWOOD, MANAGER.

## The Northwood Company

— Manufacturers of —

Fine Pressed Glass  
Tableware and Colored  
Blown Goods in

Lemonade  
Sets

and Tableware.

New Shapes, Enamel and  
Gold Decorations,  
Opalescent Patterns and  
General Line of Novelties.



"Crystal Queen" Tumbler No. 1.  
Made in two shapes.



"Crystal Queen," 8-inch, No. 2 Shape Berry. Made in six shapes.

INDIANA, PENNSYLVANIA.

ALEX MENZIES, 46 WEST BROADWAY, NEW YORK.  
FITZPATRICK & PASCOE, 930 ARCH ST., PHILADELPHIA.  
J. BEISWANGER, JR. & CO., BALTIMORE.

CARL NORTHWOOD, General Traveling Salesman.

Ad from Glass and Pottery World, February, 1897.

No. 2589 Ware.



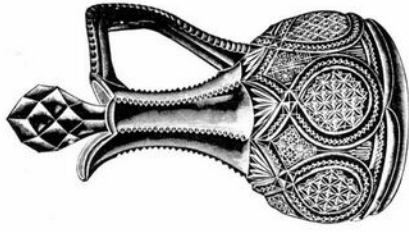
Tureen.  
Packs 20 doz. to barrel.



6 in. Bon Bon.  
Packs 7 doz. to barrel.



5 in. Rose Bowl.  
Packs 9 doz. to barrel.



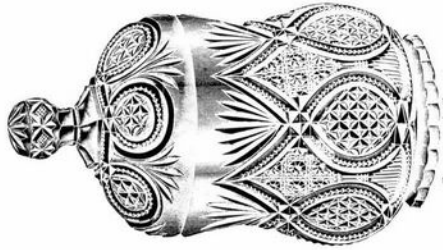
Oil, D. S.  
Packs 10 doz. to barrel.



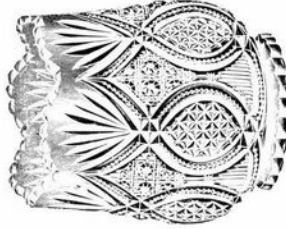
Molasses Can, N. T.  
Packs 10 doz. to barrel.



Cruget.  
Packs 8 doz. to barrel.



Sugar and Cover.  
Packs 5 doz. to barrel.



Spoon.  
Packs 8 1/2 doz. to barrel.

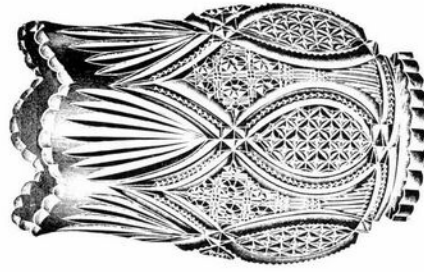
Set Packs 1-2 Dozen to Barrel.



Butter and Cover.  
Packs 1 doz. to barrel.



Celery Tray.  
Packs 4 doz. to barrel.



Tall Colory.  
Packs 3 doz. to barrel.



4 1/2 in. Sugar.  
Packs 20 doz. to barrel.

No. 2589 Ware.



6 in. Berry, A Shape.  
Packs 5 1/2 doz. to dbl.



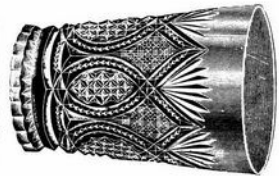
7 in. Berry, A Shape.  
Packs 1 1/2 doz. to dbl.



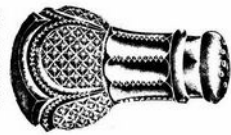
8 in. Berry, A Shape.  
Packs 3 doz. to dbl.



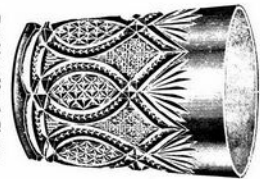
9 in. Oval.  
Packs 3 doz. to dbl.



Tumbler, No. 2 Shape.  
Packs 18 doz. to dbl.



Salt and Pepper.  
Packs 36 doz. to dbl.



Tumbler, No. 1 Shape.  
Packs 18 doz. to dbl.



1/2 Gallon Pitcher.  
Packs 1 1/2 doz. to dbl.



7 in. Berry, B Shape.  
Packs 4 1/2 doz. to dbl.



8 in. Berry, B Shape.  
Packs 3 doz. to dbl.



10 in. Cherry Tray.  
Packs 6 doz. to dbl.



6 in. Berry, B Shape.  
Packs, 5 1/2 doz. to dbl.



5 in.Handled Oiler.  
Packs 8 doz. to dbl.

CRYSTAL QUEEN. . . continued from page 4

factory's virtues, complete with a thorough description and several illustrations of the Crystal Queen:

"The Northwood Co., which has been operating their fine new works at Indiana, Pa., since last spring, and took up the lines of fine blown colored art glass, plain and in decorations. Added to the large lines of artistic blown goods, in the manufacture of which Mr. Harry Northwood has always stood in the front rank, pressed tableware has been taken hold of with a vim.

Samples of the Crystal Queen, their new tableware pattern, are herewith shown. The fan shaped cut lines filling in the spaces between the main lines of the design. The main lines cross and interlap, the fields between being filled in with faceted squares which bring out the clear brilliant crystal very strongly. The large nappies and berry bowls of the set show off the pattern to very excellent advantage, and the line ranks among the best, not only because of its design and clear metal, but the variety of the shapes the various pieces are finished in. The Northwood Co. will hereafter be among those who will have to be reckoned with as makers of pressed ware of the medium and high grades, and new designs for another set are now being prepared, so as to round out their assortment of pressed goods, and cover a wide range of trade requirement."

Despite the positive editorial comment and the wealth of advertising, this was to be the last mention of Northwood's Crystal Queen in the trade press. The pattern probably did not sell well, and the company redirected its efforts when this fact became apparent.

Of interest to collectors today is the fact that the pattern was made by the Cambridge Glass Company several years later. It was called simply #2589 in the 1903 Cambridge catalog, where 25 different articles were shown. At this time, both the Northwood plant at Indiana and the Cambridge works were controlled by the National Glass Company, so the old Northwood moulds were probably transferred to Cambridge.

There is no mention of gold decoration in the 1903 Cambridge catalog, so this may have been an exclusive feature of Northwood's production of this short-lived pattern line.

Editor's note: Antique Publications has published Dr. Measell's "Harry Northwood: The Early Years, 1881-1901" (\$21.95) and "Harry Northwood: The Wheeling Years, 1901-1925" (\$32.95). For information or a complete catalog, write: Antique Publications, Box 533, Marietta, OH 45750. Their toll-free number for book orders is: 1-800-533-3433.

---

---

## Study Club News

---

---

### STUDY GROUP #11 - ILLINOIS "THE CAMBRIDGE NUDES"

The Cambridge Nudes November meeting was held at the home of B.J. and Jane Kersey. Two of our members have moved to Columbus, Ohio. They are Brian and Linda Roberts. They will be missed. We also had a guest who was brought by Mary Sue Lyons.

Since we had so much "Show & Tell" there was no formal meeting conducted. As we discussed the various items we also began to realize, like others, how much Bill Smith will be missed. The comment "Bill would have known" was made on several items that we were unsure about. We truly have lost a good friend and a wealth of knowledge. Our deep sympathy is extended to Phyllis and family.

"Show & Tell" items included: #1320 decanter red stained grey engraved Grape pattern; #1236 crown tuscan ivy ball; SS11 7" comport forest green; #3400/59 9" celery tray Rosepoint; #881 tumbler 5 oz. peachblo etched Golf Scene; #842 12" console bowl ebony, one pair D & M candlesticks, all pieces decorated in sterling Lola pattern by Lotus; P-436 13" Pristine bowl with well base for Cambridge arms w/#1563 candlestick (4) arms and 3 epergnes #1633.

A 10" vase light emerald #274 etched #713 gold decorated; #2899 3" extra high dome flower frog, light emerald; #1953 Cathedral goblet engraved Silver Wheat, original price label \$48.00 reduced to \$39.00 per dozen. #1299 vase lamp engraved Lucia, vase by St. Clair, we think; #600/8 vase lamp engraved Lucia by St. Clair, we think. #3790 Simplicity low sherbet engraved Starburst with foil labels; pair #1617 Martha candlesticks etched Chantilly, gold decorated; #615 individual ash tray intaglio engraved Hunt Scene, peachblo.

continued on page 8

STUDY CLUBS. . . . . continued from page 7

Gold krystal candy without cover in Moderne line; crystal Caprice mustard with cover and spoon; crystal Nearcut Inverted Strawberry basket; crystal Mt. Vernon covered candy, footed, w/Sterling pattern rim near top of candy; crystal 10" serving plate etched Diane, w/Sterling pattern rim; Gadroon favor small handled basket in royal blue; crystal Cambridge egg separator; Tally-Ho royal blue top hat; amber sugar shaker, etched Cleo; and #511 Tombstone bookends, amber, etched Cleo.

In addition, there were nine pieces of Fostoria and a couple of unknowns.

submitted by Jane Kersey

**STUDY GROUP #13 - SOUTH WEST OHIO  
"MIAMI VALLEY, OHIO"**

The Miami Valley (Ohio) Study Group held their meeting November 12th at the Huber Heights Public Library. There were 13 members present.

Officers for 1992 were elected. President, Norma Hufford; Vice-President, Dave Rankin; Secretary, Sue Rankin; and Treasurer, Clarke West.

Our Christmas party will be a joint dinner, with the Fostoria Study Group, on Tuesday, December 10th and will include our usual \$10 gift exchange.

"Show & Tell" produced the following pieces: emerald green Sea Shell #35 cigarette box with enamel and gold decoration; carmen #3400/646 candlestick; crystal #1917/86 8" bowl, frosted w/decal decoration; crystal #2780 Strawberry handled and footed Berry sugar bowl; carmen #3797/26 Cambridge Square 11½" plate; light emerald #523 1-bun Geisha on screw base.

An ivory dresser box w/enamel flower decoration; royal blue Caprice #337 vase with unflared top; crystal Caprice #249 3½" blown vase; crystal Buzz Saw vase with screw together top and bottom; crystal #1012 Near Cut salt and pepper with original tops; ebony basket; crystal Gadroon 8½" square Ram's Head bowl E. Valencia; crystal Rose Lady; crystal #3121 7½" comport engraved #1064; pistachio Caprice #300 sherbet; heatherbloom #3126 tall goblet and low sherbet, both E. Portia;

carmen #1066 comport; crystal #2699 Buzz Saw 32 oz. tankard; and a Willow blue 2-lite ring-stem candlestick.

## WE GET LETTERS

Last summer, in New York State, far from home, I bought a bogus Bashful Charlotte with no holes and a strange mark. When I read the article in the CRYSTAL BALL, I knew immediately what you were talking about. This week I saw another one in Muscatine, Iowa. This one, however, had a sticker that said "W.E. Rhyne Co., Made in Taiwan R.O.C." The first one was pink and this one was cobalt.

Now that I am retired we are travelling more. Would it be of interest to anyone if I reported on the prices we see.

Mary Ann Johnson, Iowa

Dear Mary Ann,

Thank you for your letter and the information on the Bashful Charlotte. We are always happy to pass this kind of information on to our members.

We would be very interested in having you send us Cambridge prices that you see during your travels. Thanks for the offer. We will be looking for your letters.

Phyllis D. Smith, Editor

### 1906 CAMBRIDGE CATALOG

The next four pages are being reprinted here from the 1906 Cambridge Glass Co. catalog. We have been reprinting this catalog, as space permits. When we have run the entire catalog, we will list the issue numbers so you may order any issues you may have missed.

### DATES TO REMEMBER

**1992 ALL-CAMBRIDGE AUCTION**  
Saturday, February 29th

**FEBRUARY QUARTERLY MEETING**  
Friday, February 28th  
(see Auction insert for details)



# Pressed Wines and Cordials, Cup Foot.

173

SCALE, FULL SIZE.



No. 935  $\frac{3}{4}$  ounce Cordial, Cup Foot.  
Packed 70 dozen in a barrel.



No. 847 2 ounce Wine.  
Packed 35 dozen in a barrel.



No. 936  $\frac{3}{4}$  ounce Cordial, Cup Foot.  
Packed 65 dozen in a barrel.  
Also made straight.



No. 680  $1\frac{1}{4}$  ounce Cordial, Cup Foot.  
Packed 75 dozen in a barrel.



No. 848 2 ounce Wine.  
Packed 35 dozen in a barrel.



No. 937 1 ounce Cordial, Cup Foot.  
Packed 65 dozen in a barrel.

# Pressed Wines and Cordials Flat Foot.

SCALE, FULL SIZE.



No. 671 1½ ounce Wine.  
Packed 50 dozen in a barrel.



No. 671 1 ounce Cordial, Flat Foot.  
Packed 100 dozen in a barrel.



No. 668 ¾ ounce Cordial, Flat Foot.  
Packed 100 dozen in a barrel.



No. 668 2 ounce Wine.  
Packed 45 dozen in a barrel.



No. 669 2 ounce Wine.  
Packed 40 dozen in a barrel.



No. 669 ¾ ounce Cordial, Flat Foot.  
Packed 80 dozen in a barrel.



No. 670 1 ounce Cordial, Flat Foot.  
Packed 100 dozen in a barrel.



No. 670 2 ounce Wine.  
Packed 50 dozen in a barrel.

# Pressed Wines and Cordials, Flat Foot.

175

SCALE, FULL SIZE.



No. 666  $2\frac{1}{4}$  ounce Wine.  
Packed 42 dozen in a barrel.



No. 865  $2\frac{1}{4}$  ounce Wine.  
Packed 40 dozen in a barrel.



No. 866  $2\frac{1}{4}$  ounce Wine.  
Packed 40 dozen in a barrel.



No. 867  $3\frac{1}{4}$  ounce Wine.  
Packed 21 dozen in a barrel.



No. 950 1 ounce Cordial, Flat Foot.  
Packed 80 dozen in a barrel.



No. 868  $1\frac{1}{4}$  ounce Wine.  
Packed 30 dozen in a barrel.

176 No. 667 Line Stemware, Flat Foot.

SCALE, FULL SIZE.



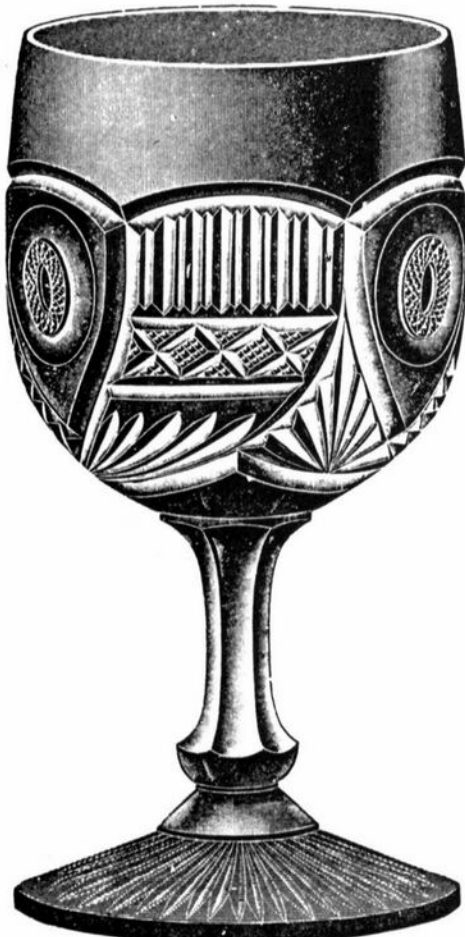
No. 667 2½ ounce Wine.  
Packed 45 dozen in a barrel.



No. 667 5 ounce Champagne.  
Packed 18 dozen in a barrel.



No. 667 1 ounce Cordial, Flat Foot.  
Packed 100 dozen in a barrel.



No. 671 8 ounce Goblet.  
Packed 10 dozen in a barrel.



No. 667 9 ounce Goblet.  
Packed 9 dozen in a barrel.

**— Classified —**

**FOR SALE:** Cambridge Glass. Etched Hunt Scene. Light emerald green. Goblets, sherbets, cocktails, fingerbowls, plates. 59 pieces perfect, 24 pieces imperfect. Make offer. Sylvia Huelsman, 1358 Goldsmith Drive., Westerville, OH 43081. 614/891-1076.

**WANTED:** Cambridge Arms units: 1 Cambridge arm; 1 vase arm; 2 epergne vases; and 1 peg vase. Faye Bartlett, 7501 Democracy Blvd., Bethesda, MD 20817. Phone 301/365-1962.

\* \* \*  
*Happy New Year*  
 May the coming year bring you  
 joy, happiness and success.



*Aladdin*  
**ELECTRIC LAMPS, 1930-1956**

ALADIX • VELVEX • OPALIQUE • ALACITE  
 Deluxe Hardbound - Color - 229 pages  
 \$24.95 ppd. - Add \$3 for first class

Order your Book from the Author:  
 J.W. COURTER  
 R-1 • Simpson, IL 62985

**L. A. MANESS**

RT. 1, BOX 552, ASHLAND, VA 23005  
 (804) 798-1825

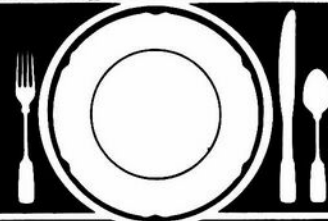
C = MARKED                      P & I \$3.50 CTN

- Round 13" bowl w/#725 etch,  
     pink C.....\$ 45
- Round #138 cream & sugar,  
     etched, pink, set.....\$ 50
- Round 9½" plate w/#520 etch,  
     green C (8) each.....\$ 17
- Star 4" candleholder (2) each...\$ 16
- Star 2" indiv. candleholders  
     (5) each.....\$ 7

MT. VERNON - Crystal

- 2 oz. wine (8) each.....\$ 15
- 1-1/2 pint pitcher C.....\$ 60
- 10 oz. ftd. tumbler (8) each...\$ 18
- Indiv. 2-handle salt C.....\$ 20
  
- Amber 14 oz stein w/crystal  
     applied handle C.....\$ 50

VISA/MASTERCARD WELCOME



**How to Find Those Missing Pieces.**

The world's largest source of discontinued and obsolete crystal -- as well as china and flatware -- Replacements, Ltd., buys and sells over 36,000 different patterns.

If you need a piece or several pieces to add to your collection ... or if you'd like to sell some unneeded extras ... call or write us. We can provide you with a complete printout of available pieces in your pattern. Or we'll let you know our prices for the pieces you wish to sell.

Replacements, Ltd.: a 100,000 square foot facility; 1.4 million pieces; over 600,000 satisfied customers. Contact us, or come see our showroom. Let us help you complete your collection ... or maybe you'll help add to ours.

**REPLACEMENTS, LTD.**

Call (919) 697-3000, FAX (919) 697-3100, or write:  
 1099 Knox Road • P. O. Box 26029, Dept. C • Greensboro, NC 27420

OVER 6800 CAMBRIDGE PIECES

# COLUMBUS ANTIQUE FLEA MARKET

11th  
Year

(ANTIQUES AND COLLECTIBLES)

11th  
Year

## JANUARY 12th

Ohio State Fairgrounds - Lausche Building - Off I-71 Exit 17th Ave.

SUNDAY ONLY - 7 am-4 pm

Early buyers welcome 4 AM

### 1992 SCHEDULE 1992

MARCH 1st \* APRIL 5th \* SEPTEMBER 6th \* OCTOBER 11th \* NOVEMBER 8th \* DECEMBER 13th

150 Quality Dealers

SELLING: Advertising, Art Deco, books, Cambridge, clocks, coins, collectibles, depression glass, dolls, Fiesta, fine early furniture, Heisey, jewelry, lamps, oak furn., postcards, pottery, good primitives, tools, toys.

Show admission \$1.50 \* Children under 12 free

Heated/Air Conditioned \* Concession



*"The Friendly  
Family Business"*

4214 North High Street, Columbus, Ohio 43214  
(614) 267-8163 (614) 263-6830 (614) 885-2352

The

## DAZE

\*SPECIAL OFFER  
to NCC friends \$2. off  
the 1 year subscription  
price when on this form  
or copy of.

The Original National monthly newspaper dedicated to the buying, selling & collecting of colored glassware and china including Depression Glass and the Elegant Glass (Cambridge, Heisey, Fostoria, etc.) We educate and inform you each month with feature articles by top notch columnists, readers "finds", club happenings, show news and a multitude of ads. Find those missing pieces to your 30s, 40s or 50s pattern. Can't identify it? Perhaps we can help "Keep up with what's happening with a subscription to the DAZE. Buy, sell or trade from the convenience of your easy chair.

Name \_\_\_\_\_ Street \_\_\_\_\_

City \_\_\_\_\_ State \_\_\_\_\_ Zip \_\_\_\_\_

1 yr \$19 2 yrs \$37 \$2. Single Current Copy

Exp date \_\_\_\_\_ Card No. \_\_\_\_\_

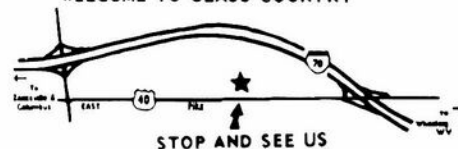
Signature \_\_\_\_\_

Orders to D.G.D., Box 57NC, Otisville, MI 48463

Please allow 30 days for your first issue - Canadian subscribers, add \$1. per year and subscribe by charge card only! This Special Offer may not be combined with any other special offer.

## Stage Coach Antique Mall

WELCOME TO GLASS COUNTRY



RT. 40 ONE-HALF MILE WEST OF I-70 EXIT #164  
MANY DEALERS - WIDE SELECTION - PLENTY PARKING

WE FEATURE GLASSWARE OF:  
CAMBRIDGE, HEISEY, FENTON & FOSTORIA  
Plus Art Pottery & a General Line of Antiques

**DORIS AND ROY ISAACS**  
BUY AND SELL  
614-872-3720



7525 EAST PIKE  
NORWICH, OHIO 43767

MON THRU SAT 10-5:30 SUN 12-5:30  
SUMMER EVENING HOURS BY CHANCE

# DEALERS



# DIRECTORY

NOTE: When writing to the Dealers listed here, please enclose a SASE!

<p><b>SANDY'S ANTIQUE MALL</b> 617 Wheeling Ave. Cambridge, OH 43725 Phone 614-432-2570</p> <p><b>COLLECTOR'S ITEMS</b></p> <p>Summer 9-6 Daily * Winter 9-4:30 Mon-Sat</p>	<p><b>BENICIA ANTIQUE SHOP</b> 305 First Street Benicia, California 94510</p> <p><b>OPEN 11 AM - 5 PM</b> Closed Monday</p> <p>Z. E. LOPES 707-745-0978</p> <p><b>VISIT HISTORIC BENICIA</b> and its 28 shops Off Interstate 80 North of San Francisco</p>	<p><b>THE MUTED SWAN ANTIQUES</b> 5486 Peachtree Rd. Chamblee, GA 30341 Heart of Camblee Antique Row Specializing in Cambridge, Heisey and Fostoria</p> <p>Bill &amp; Pat Miller 404-451-7620</p>
<p><b>MILBRA'S MATCHING SERVICE</b> P.O. Box 363, Rio Vista, TX 76093 Milbra Long 817-645-6066 FOSTORIA * CAMBRIDGE * HEISEY DEPRESSION ERA GLASSWARE BUY AND SELL</p>	<p><b>ANTIQUE'S ON THE MALL</b> SPECIALIZING IN CAMBRIDGE GLASS Stagecoach Mall - Bldg 3 - Norwich, OH Virginia Bennett 614-432-4483 64183 Wayne Drive, Cambridge, OH 43725</p>	<p>Elegant Depression Era Glassware</p> <p><b>ABBA ANTIQUES</b> 1157 Charlie Lane Liburn, GA 30247 Bill &amp; Barbara Adt 404-279-1942 Shows, Mail Order &amp; by Appointment</p>
<p><b>THE GLASS URN</b> 456 West Main Street, Suite G Mesa, AZ 85201 602-833-2702</p> <p>Mail Order Shows Open Shop</p> <p><b>CAMBRIDGE, FOSTORIA, HEISEY, ETC.</b></p>	<p><b>ANTIQUE'S ON THE MALL</b> SPECIALIZING IN CAMBRIDGE GLASS Stagecoach Mall - Bldg 3 - Norwich, OH Virginia Bennett 614-432-4483 64183 Wayne Drive, Cambridge, OH 43725</p>	<p><b>GATEWAY ANTIQUE MALL</b> 21122-134th Avenue North, Rogers, MN 55374 1-94 &amp; 101 (Exit #207, Turn North) Open 10-6, 7 Days 612-428-8286 Elaine Storck, Proprietor* Diane Overson, Manager</p>
<p><b>ETTELMAN'S DISCONTINUED CHINA &amp; CRYSTAL</b> Cambridge a Speciality</p> <p>P.O.Box 6491-CB Corpus Christi TX 78466 Phone 512-888-8391 Include S.A.S.E.</p>	<p><b>D &amp; D ANTIQUES</b> Columbus, Ohio</p> <p>Dick Slifko SHOWS ONLY</p>	<p><b>DEER TRAIL ANTIQUES RONI SIONAKIDES</b> 517-669-5981 6565 W. Herbison Rd. DeWitt, MI 48820 Fostoria, Tiffin, Duncan, Cambridge</p>
<p><b>THE GLASS CUPBOARD</b> 39 Shire Oaks Drive Pittsford, New York 14534</p> <p>Marcia Ellis Cambridge, Duncan Miller 716-586-7596 Shows, Mail Order, Appt.</p>	<p><b>JUDY'S ANTIQUES</b> Judy Bennett 422 S. Ninth Street (Corner of Jefferson) Cambridge, Ohio 43725 BUYING Ph.614-432-5855 SELLING <b>CAMBRIDGE GLASS MY SPECIALTY</b></p>	<p><b>"HAPPINESS IS"</b> Buddy and Kathy Stultz 3106 Warren Court, Glen Allen, VA 23060 804-672-8102</p> <p>Write or Call Us ----- We Do Ship</p>
<p><b>ELEGANT GLASSWARE</b> Barbara Brock 26 Fayette St. Martinsville, VA 24112 804-724-6762</p> <p>Cambridge - Heisey - Duncan - Fostoria</p>	<p><b>GREEN ACRES FARM</b> 2678 Hazelton Etna Rd., Pataskala, OH 43062 (State Route 310 North)</p> <p>Sat &amp; Sun 1-7 PM 614-927-1882 Antiques, Crystal Glass and Collectibles</p>	<p><b>CROW'S NEST ANTIQUES</b> Constance Crow Buying &amp; Selling Elegant Depression Era Glassware</p> <p>Austin Antique Mall 8822 McCann Austin, TX 78758 512-371-0244</p>
<p><b>YOU CAN ADVERTISE YOUR ANTIQUe SHOP HERE!</b></p>	<p><b>PATCHES OF VIRGINIA</b> Specializing in China and Glass Virginia T. Houston</p> <p>34116 Roberts Rd., Eastlake, OH 44095 Phone: 216-975-8315</p>	<p><b>CRYSTAL LADY</b> 1817 Vinton St., Omaha, NE 68108 Joann D. Hagerty</p> <p>Bus. 402-341-0643 Res. 402-391-6730 Specializing in Elegant Glass &amp; Collectibles</p>
<p><b>YOU CAN ADVERTISE YOUR ANTIQUe SHOP HERE!</b></p>	<p><b>REMEMBRANCES</b> 7597 Daphne Dr., No. Syracuse NY 13212 Shirley S. Ladouceur 315-458-5297</p> <p>ANTIQUES and COLLECTIBLES MAIL ORDER SHOWS APPOINTMENTS</p>	<p><b>MARGARET LANE ANTIQUES</b> 2 E. Main St., New Concord, OH 43762 Lynn Welker 614-826-4418</p> <p>Cambridge Glass Matching Service Hours Mon-Fri 1-5 PM or by Appointment</p>
<p><b>GLASS RESTORATION</b></p> <p>BRILLIANT DON &amp; LYNNE CRYSTAL WORMLAND ELEGANT MT. CLEMENS, MICH DEPRESSION 313-468-3519</p>	<p><b>WATKINS</b> (Fine Quality) <b>CAMBRIDGE GLASS SHOP</b> 1429 Marquand Ave. (Corner of Woodlawn) Cambridge, OH 614-432-4460 Lana Watkins</p>	<p><b>HELEN &amp; JIM KENNON</b> Heisey, Cambridge, Fostoria, Duncan, Imperial, Fenton, Tiffin</p> <p>P.O. Box 114, Brookville, OH 45309 PH: 513-833-5406 SHOWS ONLY</p>



**National Cambridge Collectors, Inc.**

P. O. Box 416, Cambridge, Ohio 43725

*A nonprofit organization dedicated to the preservation and study of Cambridge Glass*

You Are Cordially Invited  
To Become A Member Of The

NATIONAL CAMBRIDGE COLLECTORS, INC.

Benefits derived from membership include: receipt of our club publication, The Cambridge CRYSTAL BALL; informative Quarterly Meetings; Antique Shows; Auctions; other special events; and unlimited admission to the museum.

The Cambridge CRYSTAL BALL is published the first of each month. This newsletter contains educational and interesting articles, questions and answers, information on reproductions and reissues, notices of all club functions, classified advertisements, dealers directory, and many other features of interest to collectors of Cambridge Glass.

Yearly dues are \$15.00 for Individual Members and \$3.00 for each Associate Member. All members have voting rights, but only one issue of the CRYSTAL BALL will be mailed per household.

Name (please print) \_\_\_\_\_ \$15.00

Mailing Address \_\_\_\_\_

City \_\_\_\_\_ State \_\_\_\_\_ Zip \_\_\_\_\_

Associate Members: (Must be at least 12 years of age and living in the same household.)

1. Name \_\_\_\_\_
  2. Name \_\_\_\_\_
  3. Name \_\_\_\_\_
- Total number of Associate Members \_\_\_\_\_ @ \$3.00 each ..... \$ \_\_\_\_\_

TOTAL AMOUNT ENCLOSED: \$ \_\_\_\_\_

Please make check payable to: NATIONAL CAMBRIDGE COLLECTORS, INC.

Recommended by \_\_\_\_\_

WITH ALL BEST WISHES  
FOR A PROSPEROUS AND  
HAPPY NEW YEAR!!



**NCC Museum of Cambridge Glass**

The museum is located on U.S. Route 40, one-eighth mile east of 1-77 near Cambridge. Hours: 10 a.m. to 4 p.m., Wednesday through Saturday; noon to 4 p.m., Sunday (March through October). Phone 614/432-4245.  
**Closed Mondays, Tuesdays, Easter and the Fourth of July.**

National Cambridge Collectors, Inc.

P. O. Box 416, Cambridge, Ohio 43725

FIRST-CLASS MAIL  
U.S. POSTAGE  
PAID  
So. Vienna, Ohio  
45369  
Permit No. 15

**FIRST CLASS MAIL**

**Membership Renewal Notice**

This is your last issue of the *Crystal Ball*—if the date on your address label reads 1-92.

*Please renew now!*



**1992  
NATIONAL CAMBRIDGE COLLECTORS, INC.  
AUCTION INFORMATION**

**AUCTIONEER:** CRAIG CONNELLY

**ADMISSION:** \$1.00

**LOCATION:** Shenandoah Inn

Intersection of Interstate 70 and State Route 285  
Old Washington, Ohio (6 miles east of Cambridge)

**DATE:** February 29, 1992 **PREVIEW:** 9:00 AM **AUCTION:** 10:00 AM

All glass guaranteed to be Cambridge. The auction committee has checked all glass to be auctioned. All pieces should be examined immediately and returned before five items are sold if the article is not as represented. Any damage is indicated in this Catalog. If no color is indicated, the item is Crystal.

**TERMS:** Cash or check with proper identification, day of sale. All sales are subject to 6% Ohio Sales Tax. Dealers may sign an exemption form if the items purchased are for resale, in which case, no tax will be charged.

**CATALOG INSTRUCTIONS:** The number in parenthesis () at the end of each listing indicates the amount of items to be sold. Bidding will be by the piece if a number occurs at the end or as a lot if pair, set or lot is indicated. You may buy any number of an item if a number appears at the end of an item description. Colors refers to Colors in Cambridge by NCC for reference.

**MAIL BIDS:** All bids must be accompanied by a check for each lot. Bids will be executed secretly, and the bidder will pay only the final auction price. Please include a stamped, self-addressed envelope with bids. You will be notified if you are not the successful bidder, and your check(s) will be returned and the final selling price will be noted. Ohio residents, please include 6% Ohio Sales tax or your Vendor's number. If you wish to have the pieces shipped to you, please include a separate check for adequate postage. All pieces will be shipped via UPS the week immediately following the auction. Please include your UPS delivery address (not a P. O. box). All items are sold in perfect condition unless noted, and you may expect to receive them that way if you mail bid. All items will be carefully checked again before they are shipped. Refund checks for bid overages will be returned immediately. For additional information phone (614) 826-7414.

Bids must be received by February 28 to be eligible. Mail bids to: Lynn Welker, 2 East Main, New Concord, Ohio 43762. Make checks payable to: National Cambridge Collectors, Inc.

**MOTEL RESERVATIONS:** Phone (614) 489-5511. Mention NCC for reasonable rates. Food available on premises.

**QUARTERLY MEETING:** Friday February 28 at 8:00 PM. An informative meeting and preview of the auction glass will be presented. Bring a friend and your Show and Tell glass to the meeting.

Additional auction catalogs are \$1.00 postpaid or at the door.

1. \_\_\_\_\_ #42 Crown Tuscan 12" Urn, Charleton Enamel & gold (worn)
2. \_\_\_\_\_ #66 Crown Tuscan, 4" Dolphin candlestick
3. \_\_\_\_\_ #47 Crown Tuscan 9 1/2" Cornucopia vase, shell foot
4. \_\_\_\_\_ #3400/114 Peachblo 64 oz. ball jug & 4, 3400/38 tumblers (set)
5. \_\_\_\_\_ #3797/54 Ebon Cambridge Square 6" Comport, gold birds decor
6. \_\_\_\_\_ #3400/1240 Gold Krystol, Appleblossom, 12" oval 4 ftd. bowl, edge roughness
7. \_\_\_\_\_ #95 Azurite 1 pound covered candy jar
8. \_\_\_\_\_ #3 Moonlight Blue 5" star candlestick made into lamp (metal damage)
9. \_\_\_\_\_ #440 10" Star bowl (scratches & 2 nicks)
10. \_\_\_\_\_ #3 5" Star candlesticks (match above) (pair)
11. \_\_\_\_\_ #1380 Scotch etch 26 oz. decanter, chrome pump top (slight stain)
12. \_\_\_\_\_ #516 Crystal 10 1/2" Draped Lady figurine
13. \_\_\_\_\_ #512 Crystal Rose Lady flower figure (chips 2 holes)
14. \_\_\_\_\_ #512 Amber Rose Lady Flower Figure, early tall base (cut down bottom)
15. \_\_\_\_\_ #870 Light Emerald Decagon 11" center handled tray
16. \_\_\_\_\_ Amber Farberware jug salt & pepper (pair)
17. \_\_\_\_\_ Peachblo 6" 3 part relish, Farber edge & bail
18. \_\_\_\_\_ #1620 Crown Tuscan 11 1/2" vase, (cracked connector) label
19. \_\_\_\_\_ Royal Blue Farber stem cocktail
20. \_\_\_\_\_ #96 Old Cobalt 1/2 pound candy jar base, gold trim
21. \_\_\_\_\_ #3400/38 Royal Blue 12 oz. (ball top) tumbler
22. \_\_\_\_\_ #319 Mulberry 9 oz. Georgian tumbler, unusual
23. \_\_\_\_\_ #319 Bluebell 9 oz. Georgian tumbler, (chips) rare
24. \_\_\_\_\_ #319 Royal Blue 9 oz. Georgian tumbler
25. \_\_\_\_\_ #319 Carmen 9 oz. Georgian Tumbler (4)
26. \_\_\_\_\_ #319 Emerald 12. oz Georgian tumbler (2)
27. \_\_\_\_\_ #319 Amber 12 oz. Georgian tumbler (2)
28. \_\_\_\_\_ #319 Amethyst 12 oz. Georgian tumbler (2)
29. \_\_\_\_\_ #317 Carmen 5 oz. Georgian tumbler
30. \_\_\_\_\_ #317 Emerald 5 oz. Georgian tumbler, original label
31. \_\_\_\_\_ #1201 Amber 2 1/2 oz. Georgian tumbler, signed
32. \_\_\_\_\_ #1201 Mocha 2 1/2 oz. Georgian tumbler, signed
33. \_\_\_\_\_ #1201 Light Emerald 2 1/2 oz. Georgian tumbler, signed
34. \_\_\_\_\_ #1201 Crystal 2 1/2 oz Georgian tumbler
35. \_\_\_\_\_ #3175 Carmen Georgian sherbet, original label
36. \_\_\_\_\_ #3175 Mandarin Gold Georgian sherbet
37. \_\_\_\_\_ #319C Smoke Georgian candy box & cover
38. \_\_\_\_\_ #319C Pink Georgian candy box & cover
39. \_\_\_\_\_ #1 Amber 2 1/2" Star candlesticks, hard to find, (pair)
40. \_\_\_\_\_ W93 Milkglass Everglades 12 oz. mug
41. \_\_\_\_\_ #3400/156 Royal Blue 12 oz cordial decanter, crystal stopper
42. \_\_\_\_\_ #3104 Royal Blue 5 oz. roemer, crystal stem and foot
43. \_\_\_\_\_ Opaque Yardley jar, roughness under glass lid
44. \_\_\_\_\_ Opaque Yardley jar, original plastic lid
45. \_\_\_\_\_ Ivory Wetherford berry dish
46. \_\_\_\_\_ #3135 Royal Blue 5 oz. ftd. tumbler, crystal foot
47. \_\_\_\_\_ Mulberry lemonade mug, wide optic, gold encrusted trim
48. \_\_\_\_\_ #3500 Amethyst oval butter in Farber holder
49. \_\_\_\_\_ #SS7 Crown Tuscan 14" plate, Charleton florals & gold (edge wear)
50. \_\_\_\_\_ #509 Light Emerald 8 3/4" Two Kid flower figure
51. \_\_\_\_\_ #1242 Royal Blue 11" vase, Sterling Vintage overlay
52. \_\_\_\_\_ #1402/77 Tally-Ho punch bowl (some scratches), 17 1/2" tray, and  
10 Carmen handled cups (set)
53. \_\_\_\_\_ #84 Peachblo 12" ftd. vase, etch #724 (Betty)
54. \_\_\_\_\_ #71 Primrose 8 1/2" candlesticks (pair)
55. \_\_\_\_\_ #842 Amber Decagon 12" bowl, Lorna etch, gold trim, signed
56. \_\_\_\_\_ #627 Amber Decagon 4" candlestick, Lorna etch, gold trim (1)
57. \_\_\_\_\_ #3500/57 Crown Tuscan 8" 3 part candy box and cover
58. \_\_\_\_\_ #1238 Amber 12" vase, Crystal keyhole stem and foot
59. \_\_\_\_\_ #278 11" ftd. vase, Feather cut (small chip at top)
60. \_\_\_\_\_ #3400/1180 Light Emerald 5 1/4" handled. bon-bon, signed
61. \_\_\_\_\_ #279 Peachblo 13" ftd. vase, etch #717, gold trim, rare
62. \_\_\_\_\_ #1542 Lifesaver 20 oz. decanter & stopper, hard to find
63. \_\_\_\_\_ P733/4/5 3 pc. ashtray set, Crystal, Mandarin Gold, Moonlight Blue, (set)
64. \_\_\_\_\_ #9 Arcadia iced teas (6)
65. \_\_\_\_\_ #248 Gold Krystol Appleblossom etch 11" celery
66. \_\_\_\_\_ W103 Milkglass Seashell 4" ashtray
67. \_\_\_\_\_ #511 Crystal tombstone bookends, (minor base chips) (pair)
68. \_\_\_\_\_ #7966 2 oz. claret, gold Lily of the Valley, (D/1064)

69. \_\_\_\_\_ #3121 7" candlesticks with bobeches & prisms (pair)
70. \_\_\_\_\_ #2636 Nearcut 6" bouquet holder, (large base chip)
71. \_\_\_\_\_ #2760 Daisy Nearcut 2 handled celery vase
72. \_\_\_\_\_ #2760 Archfoot Daisy Nearcut salt & pepper, no lids, chipped feet (pr)
73. \_\_\_\_\_ #2760 Archfoot Daisy Nearcut 5 1/2" handled. olive, signed
74. \_\_\_\_\_ #2631 Marjorie Nearcut 12" punch bowl & foot, signed
75. \_\_\_\_\_ #2631 Marjorie Nearcut 6" rosebowl, signed, rare
76. \_\_\_\_\_ #2631 Marjorie Nearcut individual creamer and sugar, signed (pair)
77. \_\_\_\_\_ #2631 Marjorie Nearcut berry creamer & sugar, signed
78. \_\_\_\_\_ The Duchess Nearcut miniature lamp, complete w/chimney, rare
79. \_\_\_\_\_ #2658 Nearcut Green 4 oz. toy mug, gold "Flora 1912", unusual
80. \_\_\_\_\_ #2651 Feather Nearcut Marigold Carnival sundae
81. \_\_\_\_\_ #2651 Feather Nearcut 10" cake salver, signed
82. \_\_\_\_\_ #2651 Feather Nearcut wine
83. \_\_\_\_\_ #2635 Fernland Nearcut 6 1/4" vase, signed
84. \_\_\_\_\_ #2351 Nearcut punch bowl, (no base) & 6 cups (set)
85. \_\_\_\_\_ #2630 Plymouth Nearcut 7" handled basket, signed
86. \_\_\_\_\_ #2696 Nearcut 2 1/2 oz. whiskey tumblers (2)
87. \_\_\_\_\_ #2696 Nearcut Cracker jar & cover, 2 handled
88. \_\_\_\_\_ #2766 Thistle Nearcut Emerald 9" bowl, signed, (base chip)
89. \_\_\_\_\_ #2699 Buzz Saw Nearcut ruffled jelly compote, signed
90. \_\_\_\_\_ #2699/112 Buzz Saw Nearcut 6" flared jelly compote, signed
91. \_\_\_\_\_ #2660 Wheat Sheaf Nearcut tumbler, signed
92. \_\_\_\_\_ #2660 Wheat Sheaf Nearcut 5" jelly & cover, faintly signed
93. \_\_\_\_\_ #3450 Carmen Nautilus 28 oz. decanter & 6, 2 1/2 oz. tumblers (set)
94. \_\_\_\_\_ #69 Primrose 7 1/2" candlesticks (pair)
95. \_\_\_\_\_ #91 Primrose 10" stick vase, footed
96. \_\_\_\_\_ #1070 Royal Blue 36 oz. pinch decanter & 6 matching 2 oz. whiskeys (set)
97. \_\_\_\_\_ #15 Windsor Blue 6" Seashell comport, signed (hard color)
98. \_\_\_\_\_ #15 Crown Tuscan 6" Seashell comport
99. \_\_\_\_\_ #3725 Star Cut 7 oz. tall sherbet
100. \_\_\_\_\_ #1957 Sonata tall sherbet, original label
101. \_\_\_\_\_ #1953 5 oz. ftd. tumbler, original label
102. \_\_\_\_\_ P101 Manor cut 32 oz. cocktail shaker, ground in stopper
103. \_\_\_\_\_ #7966 4 oz. claret, gold encrusted Wheat
104. \_\_\_\_\_ Blue I, 5 1/2" basket, (rope type handle), rare in color
105. \_\_\_\_\_ #104 Mt. Vernon 12", 5 part celery & relish
106. \_\_\_\_\_ #3011 Carmen Nude 3 oz. cocktail
107. \_\_\_\_\_ #1043 Crown Tuscan 8 1/2" swan, style III (outside wing chip)
108. \_\_\_\_\_ #1236 Forest Green 7 1/2" ivy ball, crystal keyhole stem
109. \_\_\_\_\_ #20 Avocado ftd. creamer & sugar, rare color, (pair)
110. \_\_\_\_\_ #1380 Bourbon etch 26 oz. decanter, chrome pump top (slight stain)
111. \_\_\_\_\_ #23 Violet Everglades 5" (leaves) vase
112. \_\_\_\_\_ #29 Ivory 12" bowl, enamel Basket of Flowers, beautiful
113. \_\_\_\_\_ #1402/116 Royal Blue Tally-Ho salt shaker, glass top (1)
114. \_\_\_\_\_ #1402/116 Carmen Tally-Ho salt shaker, glass top (1)
115. \_\_\_\_\_ "Stackaway" ashtray set (Amber,Amethyst,Forest Green,Royal Blue) (set)
116. \_\_\_\_\_ #1321 Forest Green 28 oz. ftd. decanter, stopper damage
117. \_\_\_\_\_ #3400/92 Forest Green 2 1/2 oz. barrels, Farber holders (4)
118. \_\_\_\_\_ #3400/92 Amethyst 32 oz. decanter & 6, 2 1/2 oz barrels (set)
119. \_\_\_\_\_ 8 1/2" Silverplate swan with Light Emerald #231 insert, rare
120. \_\_\_\_\_ Brass plated dog with pink #387 ashtray insert, signed
121. \_\_\_\_\_ Helio 9 1/2" candlesticks (pair)
122. \_\_\_\_\_ #845 Dianthus Pink Oaken Bucket (ice) platinum trim, signed
123. \_\_\_\_\_ Stradivarius Tahoe Blue 3 oz. cocktail, crystal stem
124. \_\_\_\_\_ Krystolshell sugar and creamer, original labels (pair)
125. \_\_\_\_\_ #577 Moonlight Blue 8" "Horn of Plenty"
126. \_\_\_\_\_ #1 Crown Tuscan 5" Seashell plate, Charleton roses & gold
127. \_\_\_\_\_ #31 Everglades 16" Tulip plate
128. \_\_\_\_\_ W120 Milkglass Dresden Lady figurine
129. \_\_\_\_\_ #1042 Light Emerald 6 1/2" Swan Style I, signed
130. \_\_\_\_\_ #1636 Crystal peg Bluejay for Cambridge Arms
131. \_\_\_\_\_ #3500/90 Willow Blue cigarette holder (no ashtray foot), all blue, unusual
132. \_\_\_\_\_ Mardi Gras 5 1/2" ball vase, fine color, rare
133. \_\_\_\_\_ #3400/150 Amethyst 12 oz. stein
134. \_\_\_\_\_ #710 Light Emerald 9" pen tray, gold encrusted. Basket of Flowers, rare shape
135. \_\_\_\_\_ Peachblo 8 oz. Cat bottle with original whiskey cap
136. \_\_\_\_\_ Twist Stem lamp, 14 1/2" tall plus fittings, rare
137. \_\_\_\_\_ #1256 Amber everglades 11" Tulip bowl, satin background, unusual

138. \_\_\_\_\_ #1956/7 Smoke ashtray, (slight stain)
139. \_\_\_\_\_ #628 Cambridge Arms 3 1/2" candlestick base
140. \_\_\_\_\_ #119 Primrose 7" basket, black enamel trim, rare
141. \_\_\_\_\_ #96 Azurite 1/2 pound candy jar & cover
142. \_\_\_\_\_ Stratford (Mt. Vernon) 6 1/2" rose bowl, signed, unusual
143. \_\_\_\_\_ #163 Forest Green 8 1/2" asparagus plate, scratched
144. \_\_\_\_\_ #512 Light Emerald 8 1/4" Rose Lady flower figure
145. \_\_\_\_\_ #3500/15 Forest Green individual sugar & creamer (pair)
146. \_\_\_\_\_ #606 Peachblo 2 1/2" oval celery dips, faintly signed (6)
147. \_\_\_\_\_ W81 Milkglass Mt. Vernon 2 handled, footed, individual salt (2)
148. \_\_\_\_\_ #102 Mt. Vernon 2 handled, footed individual salt, signed
149. \_\_\_\_\_ #3400/71 Forest Green 3", 4 footed nutcup, signed
150. \_\_\_\_\_ #3400/71 Gold Krystol 3", 4 footed nutcup, signed
151. \_\_\_\_\_ #3126 Amber 1 oz. cordial, optic bowl, crystal stem
152. \_\_\_\_\_ #7966 1 oz. cordial, unknown gray cutting
153. \_\_\_\_\_ #3775 1 oz. cordial
154. \_\_\_\_\_ #3120 Achilles cut 1 oz. cordial
155. \_\_\_\_\_ #1401 Jefferson 1 oz. cordial
156. \_\_\_\_\_ #1327 Mandarin Gold 1 oz. favor vase/cordial
157. \_\_\_\_\_ #1327 Amethyst 1 oz. favor vase/cordial (2)
158. \_\_\_\_\_ #7966 Rondo 1 oz. cordial (low stem) (1 nick) (2)
159. \_\_\_\_\_ #7966 Amethyst 1 oz. cordial (high stem)
160. \_\_\_\_\_ #7967 Melody 1 oz. cordial, Dawn etch
161. \_\_\_\_\_ #1 Carmen muddler
162. \_\_\_\_\_ #1 Crystal muddlers (2)
163. \_\_\_\_\_ #925 Light Emerald after dinner cup & saucer, etch #703, signed
164. \_\_\_\_\_ #925 Peachblo after dinner cup & saucer, signed (2)
165. \_\_\_\_\_ #925 Crystal after dinner cup, gold rings decor, signed
166. \_\_\_\_\_ #1371 Ebony bridge hound, original label
167. \_\_\_\_\_ #3130 Amber 10 oz. goblet, Appleblossom etch
168. \_\_\_\_\_ #3130 Gold Krystol 10 oz. goblet, Gloria etch, gold encrusted
169. \_\_\_\_\_ #3143/51 Sunset 12 oz ranch tumbler, gyro optic, superb color
170. \_\_\_\_\_ #1043 Emerald 8 1/2" swan style III
171. \_\_\_\_\_ #1321 Amber 28 oz. footed decanter, no stopper
172. \_\_\_\_\_ #7966 Amber 2 oz. sherries (2)
173. \_\_\_\_\_ #45 Primrose 9 1/2" comport
174. \_\_\_\_\_ #3700 Tempo cut tall sherbets (4)
175. \_\_\_\_\_ Crystal patent lemon squeezer, usual roughness
176. \_\_\_\_\_ #3400/68 Cream and sugar, Sterling overlay florals (pr)
177. \_\_\_\_\_ #1307 Forest Green 5", 3 lite candlesticks (pr)
178. \_\_\_\_\_ #1402/67 Forest Green Tally-Ho 6 1/2" tall comport
179. \_\_\_\_\_ Carmen "Top Hat" ashtray
180. \_\_\_\_\_ #438 Rubina 8 1/2" candlestick (1)
181. \_\_\_\_\_ #3400/646 Amber Diane etch Decagon candlesticks (pr)
182. \_\_\_\_\_ #1040 Mocha 3" swan, style II, signed, hard to find
183. \_\_\_\_\_ #1040 Light Emerald 3" swan, style I, signed
184. \_\_\_\_\_ #1040 Peachblo 3" swan, Style I, signed
185. \_\_\_\_\_ #1040 Emerald 3" swan, Style III
186. \_\_\_\_\_ #1040 Crown Tuscan 3" swan, Style III
187. \_\_\_\_\_ #1041 Crystal 4 1/2" swan, Style I, signed
188. \_\_\_\_\_ #1043 Ebony 8 1/2" swan, Style I, signed, mint
189. \_\_\_\_\_ #52 Carmen Mt. Vernon 40 oz. decanter, original stopper
190. \_\_\_\_\_ #22 Carmen Mt. Vernon 3 oz. ftd. tumblers (4)
191. \_\_\_\_\_ #1236 Amber 7 1/2" ivy ball, crystal keyhole stem
192. \_\_\_\_\_ #3126 Royal Blue 9 oz. goblets, crystal stem and foot (4)
193. \_\_\_\_\_ #1238 Crown Tuscan 12" footed vase, keyhole stem
194. \_\_\_\_\_ #3011 Smoke Nude stem comport, (short stem)
195. \_\_\_\_\_ #3011 Pink (reopening) Nude Champagne, rare
196. \_\_\_\_\_ #522 Crystal Geisha (2 Bun) lamp, metal base damage
197. \_\_\_\_\_ #585 Bluebell 1/2 oz. perfume, early label, no dauber
198. \_\_\_\_\_ #212 Ebony match holder, gold trim, unusual
199. \_\_\_\_\_ #1953 Silver Wheat cut goblet
200. \_\_\_\_\_ #1402/100 Royal Blue Tally-Ho sherbet, gold encrusted D1007/8
201. \_\_\_\_\_ #4000/9 Cascade 12 oz. footed iced tea
203. \_\_\_\_\_ #1070 Royal Blue 36 oz. pinch decanter, original stopper
203. \_\_\_\_\_ #3400/38 Royal Blue 80 oz. ball jug, (scratched)
204. \_\_\_\_\_ #7606 Light emerald low sherbet, etch Martha (grapes)
205. \_\_\_\_\_ #P500 Pristine 6 1/2" candlesticks (pair)
206. \_\_\_\_\_ #701 Amber Laurel Wreath place card

207. \_\_\_\_\_ W105 Milkglass 9" Seashell, 3 footed bowl
208. \_\_\_\_\_ Glassworker's Portiere, (glass chains for doorframe) 12 sections, 36" wide,  
7 Cambridge colors and crystal, very rare
209. \_\_\_\_\_ 13" Bent glass tray, Dorothy Thorpe hadpainted roses, rare
210. \_\_\_\_\_ Moonlight Blue controlled bubble paperweight with 7 1/2" applied bud vase,  
Cambridge label, rare
211. \_\_\_\_\_ #1130 Carmen Nautilus lamp, brass fittings, gold D1007/8 silk screen, wear  
on one side, rare
212. \_\_\_\_\_ #1402/37 Amethyst Tally-Ho 2 1/2 oz. handled tumbler
213. \_\_\_\_\_ #1050 4 1/2" swan with attached candlecup, Style III
214. \_\_\_\_\_ #3077 Peachblo Cleo etch 6 oz. tall sherbets (4)
215. \_\_\_\_\_ #3400/92 Amethyst 32 oz. decanter, Sterling tavern scene, handle crack
216. \_\_\_\_\_ #3400/92 Amethyst 2 1/2 oz. barrels, Sterling "Just a Swallow", (2 stained)(4)
217. \_\_\_\_\_ #3797 Smoke Cambridge Square sherbet, crystal foot
218. \_\_\_\_\_ #1138 Crystal 8 1/2" Sea Gull flower frog
219. \_\_\_\_\_ #509 Amber (medium) 8 3/4" Two Kid flower frog
220. \_\_\_\_\_ #3011 Forest Green Nude candlestick (off color tinge to stem & foot)
221. \_\_\_\_\_ #1237 Amethyst 10" vase, Crystal keyhole stem
222. \_\_\_\_\_ #726 Light Emerald 8" vase, spiral optic, gold Roses etch, trim wear
223. \_\_\_\_\_ #170 Caprice 6 1/2" club dish
224. \_\_\_\_\_ #17 Caprice cups and saucers (4)
225. \_\_\_\_\_ #154 Caprice 6", 2 handled bonbon, square (scratched)
226. \_\_\_\_\_ #70 Caprice Alpine 7" candlesticks (pair)
227. \_\_\_\_\_ #22 Caprice 8 1/2" plates, minor scratches (6)
228. \_\_\_\_\_ #124 Caprice 8 1/2" 3 part celery and relish
229. \_\_\_\_\_ #310 Caprice 5 1/4" 12 oz. tall tumbler, chip on top
230. \_\_\_\_\_ #76 Caprice 9 1/2" 3 lite epergne base
231. \_\_\_\_\_ #130 Caprice 6" tall comport
232. \_\_\_\_\_ #122 Caprice 8" 3 part relish
233. \_\_\_\_\_ #165 Caprice 6" 3 footed candy box & cover
234. \_\_\_\_\_ #300 Caprice 3 oz. cocktails (2)
235. \_\_\_\_\_ #144 Caprice 4 1/2" 2 handled jelly
236. \_\_\_\_\_ #235 Caprice 6" rose bowl, 4 footed
237. \_\_\_\_\_ #74 Caprice 9 1/2" long 3 lite candlestick
238. \_\_\_\_\_ #22 Caprice 8 1/2" plates, scratches (8)
239. \_\_\_\_\_ #57 Caprice 10" salad bowl, (chip on outside 1 foot)
240. \_\_\_\_\_ #125 Caprice 12" 3 part celery and relish, plain bottom
241. \_\_\_\_\_ #126 Caprice 12" 4 part celery and relish, rare
242. \_\_\_\_\_ #339 Caprice 8 1/2" vase, ground top, slightly cloudy
243. \_\_\_\_\_ #169 Caprice 6" Heart dish
244. \_\_\_\_\_ #300 Caprice goblets, (chips) (2)
245. \_\_\_\_\_ #124 Caprice 7" 3 toed sauce dish, 2 pour spouts
246. \_\_\_\_\_ Caprice 14" 4 footed flat handled banana dish, rare
247. \_\_\_\_\_ Caprice goblet, possibly #400 line, rare
248. \_\_\_\_\_ #38 La Rosa Pink Caprice sugar
249. \_\_\_\_\_ #17 Mocha Caprice cups and saucers (4)
250. \_\_\_\_\_ #26 Moonlight Blue Caprice 11 1/2" footed plate, scratched
251. \_\_\_\_\_ #249 Moonlight Blue Caprice 3 3/4" vase, rare
252. \_\_\_\_\_ #22 Moonlight Blue Caprice 8 1/2" plates (scratched) (6)
253. \_\_\_\_\_ #82 Moonlight Blue Caprice 13" 4 footed shallow bowl (scratched)
254. \_\_\_\_\_ #173 Moonlight Blue Caprice Alpine 6 1/2" cloverleaf
255. \_\_\_\_\_ #35 Moonlight Blue Caprice 16" cabaret plate (scratched)
256. \_\_\_\_\_ #1338 Moonlight Blue Caprice 6", 3 lite candlesticks (pair)
257. \_\_\_\_\_ #337 Royal Blue 4 1/2" vase, polished top
258. \_\_\_\_\_ #28 Topaz (Vaseline) 14" footed plate, light scratches, extremely rare
259. \_\_\_\_\_ W125 Milkglass Caprice 3 1/2" vase
260. \_\_\_\_\_ #87 Mt. Vernon 1 oz. cordials (6)
261. \_\_\_\_\_ #55 Mt. Vernon 2 oz. whiskey (1)
262. \_\_\_\_\_ #56 Mt. Vernon 5 oz. juice (1)
263. \_\_\_\_\_ #130 Mt. Vernon 4 1/2" candlesticks (pair)
264. \_\_\_\_\_ #46 Crown Tuscan Seashell 7 1/2" flower holder (snail)
265. \_\_\_\_\_ #3400/1 Gold Krystol 13" Appleblossom etch bowl (scratched)
266. \_\_\_\_\_ #1337 Cigarette holder with ashtray foot
267. \_\_\_\_\_ #34 Moonlight Blue 3 " Seashell 3 toed ashtrays (6)
268. \_\_\_\_\_ #34 Mandarin Gold 3" Seashell 3 toed ashtrays (7)
269. \_\_\_\_\_ #3400/121 royal Blue 38 oz. cocktail shaker, handle crack
270. \_\_\_\_\_ #3450 Amethyst Nautilus individual oil
271. \_\_\_\_\_ #14 Jade 9 1/2" bowl
272. \_\_\_\_\_ Chantilly clarets in Farber Duchess Lace holders (8)

273. \_\_\_\_\_ #469 Chantilly (Martha) 7 1/2" comport
274. \_\_\_\_\_ Chantilly original Cambridge pamphlet
275. \_\_\_\_\_ #1327 Chantilly 1 oz. favor vase/cordial
276. \_\_\_\_\_ #3500 Chintz (#955) 7 oz. tall sherbet
277. \_\_\_\_\_ #385 Cleo 8 1/2" 3 part relish
278. \_\_\_\_\_ #3122 Diane 1 oz. cordial
279. \_\_\_\_\_ Stradivarius Diane 10 oz. goblet, (chip)
280. \_\_\_\_\_ Diane 7 oz. blown marmalade, Sterling base, lid and spoon
281. \_\_\_\_\_ #3500/57 Elaine 8" 3 part covered candy, gold trim, signed
282. \_\_\_\_\_ #3500/21 Elaine 12" footed, handled oval bowl, gold trim, worn
283. \_\_\_\_\_ #3500 Elaine 10 oz. goblets (long bowl) (3)
284. \_\_\_\_\_ #3500 Elaine 7 oz. tall sherbet, platinum trim
285. \_\_\_\_\_ #1402/23 Elaine Tally-Ho 8" plate, gold trim
286. \_\_\_\_\_ #869 Lorna Decagon 5 3/4" comport
287. \_\_\_\_\_ #842 Lorna Decagon 12" bowl, slight scratches, signed
288. \_\_\_\_\_ #3500 Minerva 7 oz. tall sherbet
289. \_\_\_\_\_ #3121 Portia 7 oz. tall sherbet
290. \_\_\_\_\_ #3130 Portia 6 oz. tall sherbet
291. \_\_\_\_\_ #3400/62 Portia 8 1/2 " plates, 5 scratched, 1 signed (lot-6)
292. \_\_\_\_\_ #3900/54 Rosepoint 9 1/2", 3 toed bowl
293. \_\_\_\_\_ #3500/64 Rosepoint 12", 3 part celery and relish
294. \_\_\_\_\_ #3500/139 Rosepoint honey dish and cover, hard to find
295. \_\_\_\_\_ #3121 Rosepoint 7 oz tall sherbets, gold encrusted (2)
296. \_\_\_\_\_ #3500/39 Rosepoint 12" footed plate
297. \_\_\_\_\_ #3400/141 Rosepoint 76 oz. Doulton jug, low style handle
298. \_\_\_\_\_ #3400/851 Rosepoint ice bucket, original chrome handle
299. \_\_\_\_\_ #3500/54 Rosepoint 6 1/2" 2 handled low footed comport
300. \_\_\_\_\_ #3500/148 Rosepoint 6" comport
301. \_\_\_\_\_ #3900/166 Rosepoint 14" plate, gold encrusted, scratched
302. \_\_\_\_\_ #3900/167 Rosepoint 14" plate, badly scratched
303. \_\_\_\_\_ #3500/56 Valencia 7" 2 handled basket
304. \_\_\_\_\_ #170 Wildflower 13" (Martha) footed cake salver, scratched
305. \_\_\_\_\_ #930 Peachblo covered sugar (lid does not fit) signed
306. \_\_\_\_\_ #4000/41 Emerald Cascade cream and sugar (pair)
307. \_\_\_\_\_ #300 Amber 6" covered candy, 3 footed, etch #704
308. \_\_\_\_\_ M156 Crystal 10" oyster plate
309. \_\_\_\_\_ M158 Crystal 9" artichoke plate (scratched)
310. \_\_\_\_\_ #3500/62 Crystal 7 1/2" 4. part relish, Forest Green handles
311. \_\_\_\_\_ #1401 Mandarin Gold Jefferson 10 oz. low goblet, original label
312. \_\_\_\_\_ #1 Ebony log base for keg set
313. \_\_\_\_\_ #3400/91 Amber 8", 3 handled, 3 part relish
314. \_\_\_\_\_ #84 Ebony 12" footed vase
315. \_\_\_\_\_ #3797/126 Cambridge Square 10" 3 part celery and relish
316. \_\_\_\_\_ #7 Royal Blue Mt. Vernon cup and saucer, signed
317. \_\_\_\_\_ #3121/1 Amethyst 5 3/8" tall comport, crystal stem
318. \_\_\_\_\_ #94 ebony 7" X 8 1/4" sweet pea vase, gold trim
319. \_\_\_\_\_ Blue Lady Leg bookends, NCC 1977 (2)
320. \_\_\_\_\_ Amber Lion Bookends, NCC 1978 (2)
321. \_\_\_\_\_ Crystal NCC 1973 Collector's Plate (1st edition)
322. \_\_\_\_\_ Blue NCC 1974 Collector's Plate (2nd edition)
323. \_\_\_\_\_ Blue I Honeycomb 9 1/2" bowl, signed (base chips)
324. \_\_\_\_\_ #391 Light Emerald 8 " ashtray (scratched)
325. \_\_\_\_\_ P724 Pristine 2 1/2" X 3 1/2" rectangular ashtray, original label
326. \_\_\_\_\_ #1626 Crystal large cigarette lighter
327. \_\_\_\_\_ #17 Krystolshell 9" 3 footed bowl, (bruise inside)
328. \_\_\_\_\_ #3400/61 Crystal 7 1/2" plates (slight scratches) (4)
329. \_\_\_\_\_ #603 Crystal Coaster plate
330. \_\_\_\_\_ #3051 10 oz. tumbler, etch #272
331. \_\_\_\_\_ #33 Crown Tuscan 4", 3 toed ashtrays (1 chipped) (4)
332. \_\_\_\_\_ #1401 Emerald Jefferson 12oz. iced teas (scratched) (6)
333. \_\_\_\_\_ #102 Amber Wetherford 12" celery, #639 line etch
334. \_\_\_\_\_ #732 Light emerald 12", 4 footed oblong bowl
335. \_\_\_\_\_ #1402/19 Forest Green Tally-Ho cup and saucers (scratches) (4)
336. \_\_\_\_\_ P101 Pristine 32 oz. cocktail shaker (scratched, chips)
337. \_\_\_\_\_ Amber Community puff box, celluloid lid, signed
338. \_\_\_\_\_ #1215/619 Amber 3 piece oil & vinegar with tray, signed (set)
339. \_\_\_\_\_ #647 Light Emerald Decagon 6" 2 lite candlestick (1)