



Cambridge Crystal Ball

Published monthly by the National Cambridge Collectors, Inc.
to encourage and report the discovery of the elegant and boundless product
of the Cambridge Glass Company of Cambridge, Ohio

Issue No. 226

February 1992

Quarterly Meeting and Auction Preview by Lynn Welker, Auction Chairman

FEBRUARY QUARTERLY MEETING
Friday, February 28, 1992 - 8 PM
Shenandoah Inn, Old Washington, Ohio
(I-70 & SR 286 - 6 mile east of Cambridge)

If you plan to attend the Auction, why not come a day early and attend our Quarterly meeting. An informative meeting and preview of the Auction glass will be presented. Be sure to bring your "Show & Tell" glass for identification.

1992 ALL-CAMBRIDGE GLASS AUCTION
Saturday, February 29, 1992
Preview 9 AM - Auction 10 AM
Shenandoah Inn, Old Washington, Ohio

This year's Auction contains a wide variety of patterns, colors, and shapes. Please refer to the Auction Catalog, included in the January CRYSTAL BALL, for the lot numbers referred to in this article. Full instructions for bidding procedures are included on the cover page of the catalog.

Several rare and hard to find Cambridge colors are represented this year. Among them are: Lot #97 Windsor Blue Seashell comport; #109 Avocado sugar and cream; #111 Violet Everglade vase; and #169 Sunset Ranch tumbler. The #132 Mardi Gras Ball vase is an ideal opportunity to own a piece from one of Cambridge's rarest production lines.

Lot #45 Ivory Wetherford berry dish and #104 Blue I basket, are shapes that are hard to find in these colors. #22 Mulberry and #23 Bluebell Georgian tumblers are both very hard colors to find in the Georgian Line. Star candlesticks are seldom seen in colors such as the #39 Amber pair in this year's Auction.

Various shapes seldom seen in Cambridge collections include: the #62 Lifesaver decanter; #67 Tombstone bookends; #137 Amber Everglade bowl; and the #198 Ebony matchbook holder. #136 is a most unusual example of a Cambridge twist stem lamp which is very tall and high quality crystal.

The #208 glass portiere chains (to hang in a doorway and make an arch out of a square door frame) are an extreme rarity, made as a whimsey by Cambridge workers for use in their own homes. A number of unusual Cambridge colors are represented in this chain. #210 Moonlight Blue Controlled Bubble paperweight vase is another excellent example of a worker's whimsey.

The #209 Dorothy Thorpe rose decorated bent glass tray is an opportunity to own a rare shape, as well as an unusual decoration. #51 Royal Blue vase with Sterling Vintage (grapes) decoration is a stunning combination of color and silver.

continued on page 3

Cambridge Crystal Ball

Official Publication of National Cambridge Collectors, Inc. a non-profit corporation with tax exempt status. Published once a month for the benefit of its members.

Membership is available for individual members at \$15 per year and additional members (12 years of age and residing in household) at \$3 each. All members have voting rights, but only one *Crystal Ball* will be mailed per household.

Back issues of the *Crystal Ball* are available (beginning with Issue No. 1, May 1973) for members only. Cost: \$1.00 each or 12 issues for \$10.00.

1991-92 Officers & Committee Chairpersons

President	Joy R. McFadden
Vice-President	Marybelle Moorehead
Secretary	David B. Rankin
Treasurer	David B. Rankin
Sergeant-at-Arms	Judy Momirov
Acquisitions	Joe Andrejcek
Budget & Finance	David B. Rankin
By-Laws	Marybelle Moorehead
Convention Facilities	J.D. Hanes, Judy Momirov
Membership	Phyllis D. Smith
Museum---Facilities	Doyle Hanes
Museum---Interior	J.D. Hanes
Non-Glass Items	J.D. Hanes
Nominating	Mark A. Nye
Program	Cynthia A. Arent
Project	R. Clarke West
Publications	Mark A. Nye
Public Relations	Phyllis D. Smith
Publicity	Cynthia A. Arent
Study Group Advisor	Judy Momirov
1992 Auction	Lynn M. Welker
1992 Antique Show	Mary Beth Hackett
1992 Convention	Marybelle Moorehead
1992 Flea Market	Marlene & Harold Snyder
Crystal Ball Editor	Phyllis D. Smith

Classified Advertising Rates

10 cents per word \$2.00 Minimum

We cannot mix type size in classified advertisements. Abbreviations and initials will count as words. Payment in full must accompany all ads.

Display Advertising Rates

(Camera-ready ads preferred)	Members	Non-Members
1/8 page	\$6.00	\$10.00
1/4 page	10.00	15.00
1/2 page	18.00	25.00
3/4 page	25.00	35.00
Full page	33.00	45.00

Dealers Directory

Five-line maximum \$18.00 for 12 months

Cambridge *Crystal Ball* assumes no responsibility for items advertised and will not be responsible for errors in price, description or other information.

Advertising copy, articles, club news and notices must be in our hand by the 10th of each month to assure publication in our next issue.

Paid advertisements containing reproductions or new glass will not knowingly be accepted for publication.

Opinions or information stated in any signed article or letter printed in the *Crystal Ball* are those of the authors and may or may not agree with National Cambridge Collectors, Inc. The Editor reserves the right to refuse and to edit any material submitted for publication to conform with the editorial style of the *Crystal Ball*.

Please Address All Correspondence to:

National Cambridge Collectors, Inc.
P.O. Box 416, Cambridge, Ohio 43725

President — Joy R. McFadden, 614/885-2726

Secretary — David B. Rankin, 513/833-4626

Editor — Phyllis Smith, 513/323-3888

N.C.C. Museum — 614/432-4245

Please notify us immediately of any change in your address.

Please enclose an SASE when requesting information.

CAMBRIDGE GLASS BOOKS FOR SALE

By National Cambridge Collectors, Inc.

- **Colors in Cambridge Glass***
128 pages, 60 color plates, fully indexed
Hardbound with price guide \$19.95
- **1930-34 Cambridge Glass Company Catalog Reprint***
250-page reprint of original catalog
Paperback with price guide \$14.95
- **1949-53 Cambridge Glass Company Catalog Reprint***
300-page reprint of original catalog
Paperback with price guide \$14.95
- **1956-58 Cambridge Glass Company Catalog Reprint***
164-page reprint of original catalog
Paperback \$6.95

*For NCC members only, the above publications are available at a 10 percent discount.

By Bill and Phyllis Smith

- **Cambridge Glass 1927-1929**
66-page reprint of original catalog
Paperback w/identification guide \$7.95

By Cambridge Buffs Study Group

- **Nearcut**
108-page reprint of 1910 Cambridge catalog
Paperback with price guide \$9.95

By Mark A. Nye

- **Cambridge Rose Point**
94 pages, fully indexed
Paperback with value guide \$12.95

By Mary, Lyle and Lynn Welker

- **Cambridge Glass Company**
120 pages of reprints from eight old catalogs
Paperback \$10.00
- **Cambridge, Ohio Glass in Color II**
Spiralbound \$5.95

By Harold and Judy Bennett

- **1903 Cambridge Glass Company Catalog Reprint**
106-page reprint of an original catalog
Paperback \$7.50

Address your orders to:

Books
National Cambridge Collectors, Inc.
P.O. Box 416
Cambridge, OH 43725

Please add postage and handling to your order (first book, \$2.00; each additional book, 50 cents). Ohio residents add 6 percent state sales tax.

Dealer discounts available—please write!



President's Message

Christmas rushed by and 1992 is already one month old!

HAPPY NEW YEAR!

Did you make any resolutions for 1992? Could you make a late addition to your list and resolve to do a little something extra to help N.C.C. this year?

I know! You live across the country and can't help with all the hands-on work at the museum and storage building, But there are ways you can help.

(1) Tell your glass collecting friends and acquaintances about N.C.C. That will help boost membership rolls.

(2) Donations of Cambridge glass or dollars to boost the Museum fund are always welcome and genuinely appreciated. How about your income tax refund?

(3) During your next trip to Cambridge, think about calling J.D. if you have some spare hours to donate. He could probably put your talents to work. J.D. and his committee spend countless hours to keep the Museum in order (Thanks J.D. for all those hours.)

(4) Attend Quarterly meetings and special N.C.C. functions as often as possible. The fellowship is special and I guarantee you will add to your knowledge of Cambridge glass.

Enough of my soapbox. Now some business items.

Attend the N.C.C. Annual Auction. Quarterly meeting is Friday, February 28th and Auction is Saturday morning, February 29th. It is a well planned, well run event and you can add something to your collection. (Thanks Lynn for all your hard work to make the Auction such a great success each year.)

Committees responsible for Convention planning indicate everything is progressing. First mailing of Show contracts in done. Advertising has been ordered. A Flea Market site has been secured in Cambridge. Schedule your vacation and plan to attend the Antique Show & Sale and Convention June 25, 26, 27 and 28.

Lastly, don't be shut out with no place to stay when you attend Convention in June. Run to the phone and make your motel reserva-

tions now. Rooms are filling fast! (Motel listings are in your January issue of the CRYSTAL BALL.)

See you at the Auction!

JOY



AUCTION continued from page 1

Lot #112 Ivory bowl has a beautiful enamel encrusted etching of a basket of flowers. The same decor is gold encrusted on #134 Light Emerald pen tray which is an unusual shape in itself.

The #140 Primrose basket is seldom seen in this color and size and also sports back enamel trim.

A Carmen Nautilus lamp, #211, with D1007/8 gold silk screen decoration rounds out the list of unusual decorations in the Auction.

This year's Nearcut listings are highlighted by three unusual pieces: #75 Marjorie large rose bowl; #78 Duchess miniature lamp; and #79 Nearcut toy mug in hard to find early Emerald green color.

A wide variety of figurals are to be found, among them: #135 Peachblo Cat bottle; #194 Smoke Nude comport; and #195 Pink Nude champagne.

A nice group of Cambridge swans are offered in Lots #107, #129, #182 to #188, and #213. A very unusual related item is the #119 silverplate 8½" swan, an old duplication of the Cambridge Style I swan with the original Cambridge insert.

A nice group of etchings: Lots #273 thru #304 feature #294 Rosepoint honey dish and #297 Rosepoint Doulton pitcher.

An exceptional group of Caprice includes #240 celery and relish; #241 celery and relish; #245 sauce dish; #246 banana dish; and #247 goblet. An extremely scarce example of Topaz (vaseline) Caprice is Lot #258 14" footed plate.

This article has highlighted only a few of the wonderful pieces in the Auction.

Plan to attend or mail bid. Auction profits support the Museum Fund. See you there!

EPERGNES & EPERGNETTES

PART III

by MARK A. NYE

In Part II of this series on Epergnes, published in the November 1991 issue of the Cambridge CRYSTAL BALL, the vase and candleholder arms #1436, #1437 and #1438 were discussed, as was the vase holder arm #1435. Mention was made of two other vase holder arms, but no specifics were given. Corresponding in size to the three vase and candle arms, the vase holder arms differ in that they lack the center candleholder; instead each of the three has a different style center knob.

Vase holder arm #1433, the smallest of the three with a width of 7 $\frac{1}{4}$ ", has a round knob in the center and corresponds to vase and candle arm #1436. (I hope to have an illustration of this arm available for reprint within the next few months.)

Vase holder arm #1434, corresponding in size to vase and candle arm #1437, is 9" wide and can be seen on page 6, top row, as a part of the #1402/81-1434 and #1402/80-1434 epergnes.

The width of the #1435 vase holder arm is 10 $\frac{1}{2}$ ", making it the largest of the three, and it is equivalent in size to the #1438 vase and candleholder arm. There are several examples of epergnes using this arm, shown on the next two reprinted catalog pages, and all are identified by the presence of the number "1435" at the end of the item number that indicates the arm used. This same format holds true for all the epergnes shown with this article.

Use of vase holder arms #1433 and #1434 apparently ceased sometime between 1935, the year the catalog pages shown here were probably issued, and 1940, as they do not appear in the catalog issued that year.

Looking carefully at those epergnes with bobèches, pictured here, the observer will note that the bobèches appear to be reversed or upside down. The reason or reasons why Cambridge used the bobèches in this manner is not clear. One possible reason is that when the bobèche is used in the upright position in conjunction with certain candleholders, such as the #3011 or Nude candleholder, the arms would not fit properly. Another reason is that

perhaps whoever was assembling the other epergnes prior to their use in preparing the catalog illustrations (and an illustration in a national magazine) saw those that required the reversed bobèche and set them all up that way.

It does appear that the bobèche used in the inverted position is the regular #19. The #1441/8 epergne shown in the 1940 catalog (refer to the November 1991 issue for an illustration of this epergne) has reversed bobèches and in the price list are stated to be #19 bobèches. The #19 bobèche is shown extensively elsewhere in the upright position, thus demonstrating it can be used in either manner. However, used in the inverted position does require the prisms to be rehung.

The top four epergnes on page 5 have as their base the Martha Washington #3 candlestick. (Note: The Martha Washington line was brought out in the mid-to-late 1920s as the Centennial line and in 1931 was known as the Victorian line. It wasn't until 1932 that it became known as Martha Washington.) With the addition of the bobèche collar, bobèche and prisms, this candlestick is known as the #1269. The Martha Washington #3 candlestick and its associated epergnes were discontinued prior to 1946.

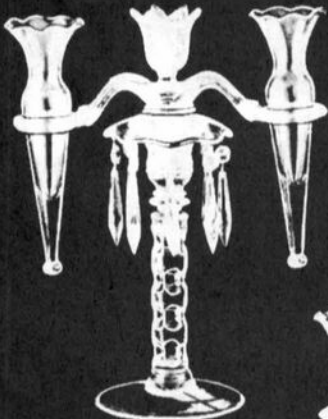
Epergnes #1358-1438 and #1358-1435, shown in the middle of page 5, were discussed in Part II. There, they were referred to by their later item numbers, #1358/8 and #1358/5, and were illustrated with the bobèche in an upright position. The #1357-1435 and #1357-1438 epergnes lack bobèches and prisms, but otherwise are the same as the preceding two. All four epergnes use the #1357 3-light candle stick, dating to the early 1930s, as their base. (Remember that when bobèches were to be used, a collar was added to the basic candlestick.)

At the bottom of page 5 are seen four items that use the Mt. Vernon #35 8" candlestick as the basic unit. The Mt. Vernon #36 is simply the #35 with the addition of a bobèche collar, bobèche and prisms. The Mt. Vernon line was

continued on page 7



THE CAMBRIDGE GLASS COMPANY



1269-1438
w/bobeche & prisms
\$77.50 Doz.



1269-1435
w/bobeche & prisms
\$77.50 Doz.



3-1435
\$46.50 Doz.



3-1438
\$46.50 Doz.



1357-1435
\$70.00 Doz.



1358-1438
w/bobeche & prisms
\$112.50 Doz.



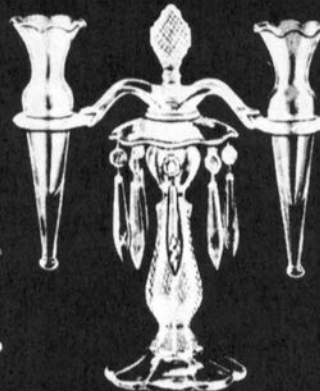
1357-1438
\$70.00 Doz.



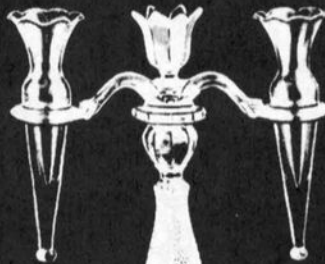
1358-1435
w/bobeche & prisms
\$112.50 Doz.



36-1438
w/bobeche & prisms
\$77.50 Doz.



36-1435
w/bobeche & prisms
\$77.50 Doz.



35-1438
\$45.80 Doz.



35-1435
\$45.80 Doz.



1402/81-1434
w/bobeche & prisms
\$62.00 Doz.



1402/81-1437
w/bobeche & prisms
\$62.00 Doz.



1402/80-1434
\$39.00 Doz.



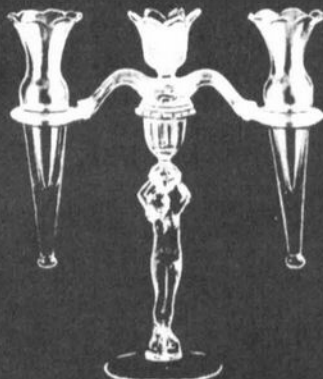
1402/80-1437
\$39.00 Doz.



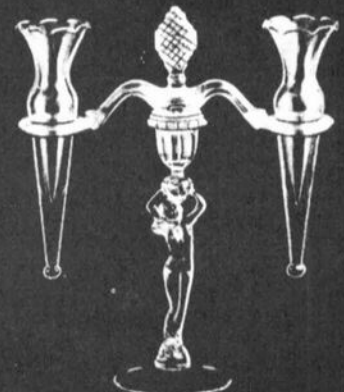
3011-1435
w/bobeche & prisms
\$86.25 Doz.



3011-1438
w/bobeche & prisms
\$86.25 Doz.



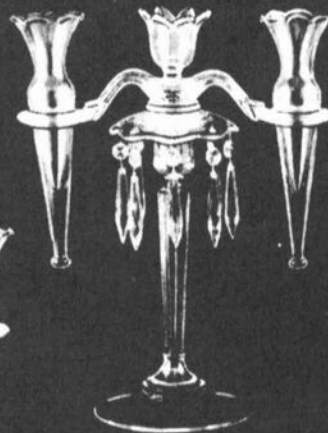
3011-1438
\$54.75 Doz.



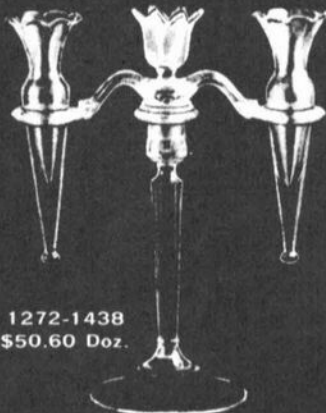
3011-1435
\$54.75 Doz.



1272-1435
w/bobeche & prisms
\$77.50 Doz.



1272-1438
w/bobeche & prisms
\$77.50 Doz.



1272-1438
\$50.60 Doz.



1272-1435
\$50.60 Doz.

EPERGNES continued from page 4

brought out in 1932 and by 1946 the bulk of the line, including the four epergnes shown here, had been discontinued.

Seen in the top row of page 6 are four Tally-Ho epergnes based on the 6½" #1402/80 candlestick. In these illustrations, the #1402/81 candelabrum appears to differ from the #1402/80; however, the only difference is the addition of the bobèche collar, bobèche and prisms.

The #3011 Nude Figure Stem line candlesticks, complete with bobèche and prisms, was shown in the October 1934 trade advertisement announcing the line's introduction. It is seen here, forming the basis for four epergnes, using arms #1435 and #1438.

The basic unit for the four epergnes whose numbers being with #1272 is the #636 9½" candlestick, first seen as early as 1927. Addition of collar, bobèche and prisms turns this item into the #1272 10½" candlestick with lustre cut prisms. As such, it was pictured on a supplemental page, issued in late 1930, to the 1930 catalog. At that time, the bobèche was shown upright and carried 10 prisms, thus being the #20 bobèche.

It is impossible to tell from these catalog reprints how many prisms there are on any of the items shown; and, unlike some other catalog pages Cambridge issued, the identity and quantity of the bobèche and prisms is not provided.

All twelve epergnes seen on page 6, as well as the basic candlesticks, were out of the Cambridge line prior to 1946.

With Best Wishes for
A Happy and Prosperous 1992.



HAPPY VALENTINE'S DAY!

Study Club News

STUDY GROUP #7 - EASTERN OHIO
"THE CAMBRIDGE BUFFS"
Phone: 416/432-5230

The Cambridge Buffs Study Group held their meeting November 30th at the home of Rich and Sally Bennett. There were 11 members present.

Rich Bennett showed a Video the Cambridge Cordials Study Group taped of former Cambridge Factory workers who had worked in the Mold, Cutting, Etching and Tour departments.

"Show & Tell" items were red & green Cambridge glass, in keeping with the Holiday season. Pieces in emerald or forest green were: Georgian basket; #1066 bowl; 2½, 7, 9, and 12 oz. Georgian tumblers; Martha Washington pretzel jar w/lid; 4-ftd. Dolphin cigarette box with Charleton and gold decoration; Inverted Thistle berry dish w/gold decoration; Everglade footed vase; demitasse cup & saucer with gold inside cup; and a Pressed Rosepoint cordial.

In light emerald green was a sundae and ice cream tray with gold decoration; decanter w/blown stopper, etched Hunt Scene; nut cup w/Gloria etching; a cordial etched Apple Blossom; and a #3400 ftd. sugar shaker.

Carmen pieces included: a #3900 flared salad bowl; Georgian basket w/crystal handle; Tally-Ho cordial; 2-hld. dish with silver overlay; #3500 cordial w/gold etched Rosepoint; 2½, 5½, 9 and 12 oz. Georgian tumblers, and a sundae, sherbet and candy dish w/lid, all in the Georgian pattern. A Nude stem cordial; Tally-Ho cordial with silver overlay; and a 4-ftd. #3400 bowl with Sterling Silver overlay.

The December 15th meeting of the Cambridge Buffs Study Group was held in the home of Roy and Doris Isaacs. There were ten members present.

Doris led the discussion on "Gas, Electric and Oil Cambridge lamps." There were several lamps on display and they included: a Duchess night lamp; Countess night lamp; #2660 Near

continued on page 15

WORKER OF THE MONTH

EDNA STEVENS NICHOLSON

by Lorraine Weinman

As a former packer and selector at the Cambridge Glass Company, Edna Stevens Nicholson recently shared some of her memories with us. Having worked there from 1929 to 1933 in these two very different positions, she was able to give us an idea of some of the responsibilities which she had.

At age 16, Edna had to get a work certificate in order to be employed at the Glass Company. She recalled that her mother went with her to sign up and that she was quickly hired.

Edna worked in the packing room preparing orders for shipment. Order boys brought the glass in to them on carts. There were benches on which the order boys would place the glass. At this point the orders were packed in boxes. The girls would then tape and stencil the boxes for shipment. They were responsible for cutting their own stencils and used a brush and ink to apply them to the boxes. Finally the boxes were sent down the chute to be loaded for delivery.



EDNA STEVENS NICHOLSON

Edna was a fast worker. Her department packed mainly dinnerware in the boxes. The glass was generally crystal. She recalled big orders such as 200 sets of dinnerware. Vases, goblets, etc., usually were packed in straw in barrels or wood crates. This was done by men in another section nearby.

When they weren't busy in the packing room, Edna would work in the front sample room. She found this to be an interesting job to do. In this position, she would select the ware to be displayed. There were several things that she had to check. The glass could have no bubbles and the pieces had to be perfect to display for the salesmen and buyers. For ex-

ample, the top edge of sherbets had to be smooth to the touch with no rough places. The stem had to be perfectly straight and the glass had to sit flat when placed on a table.

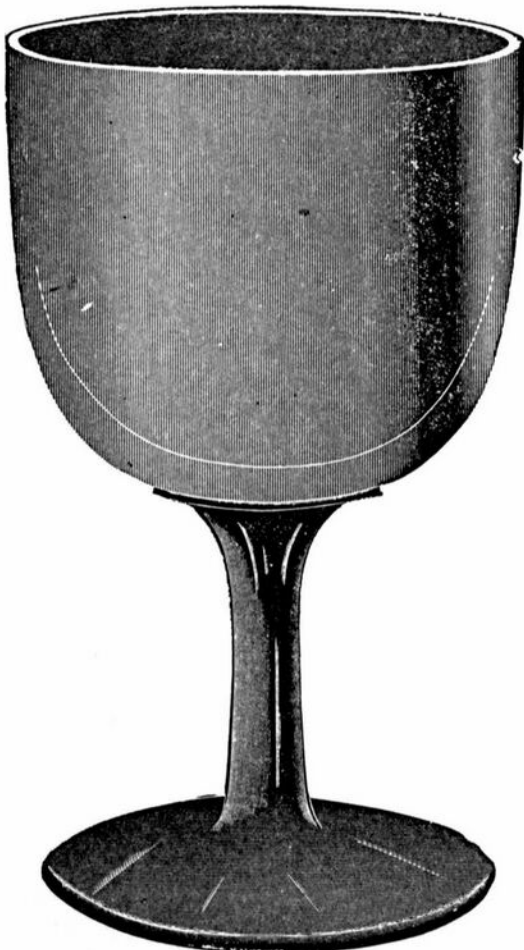
The front sample room was on the first floor by the office and displayed a piece of each item of glassware that the Cambridge Glass Company made. These samples were on shelves, which Edna stated had to be dusted every day. There also were approximately a half dozen round tables which were set with complete service. Table cloths were put on and a whole setting of a line and color, such as peach-blo or emerald, was set out along with silverware and other touches to make the table complete. Everything had to match. Colored table cloths were used with crystal, and white cloths were used with the colored glass. The settings on the tables were rotated every few days. Edna emphasized that the gold Cambridge stickers were put on all of the pieces of glass.

Edna Nicholson was both informative and interesting and it was obvious that she truly enjoyed working at the Cambridge Glass Company. We appreciate her taking the time to share this experience with us.

NOTE: The following six pages (9 thru 14) are reprinted here from the 1906 Cambridge Glass Company catalog.

Pressed Beer Goblets, Cup Foot.

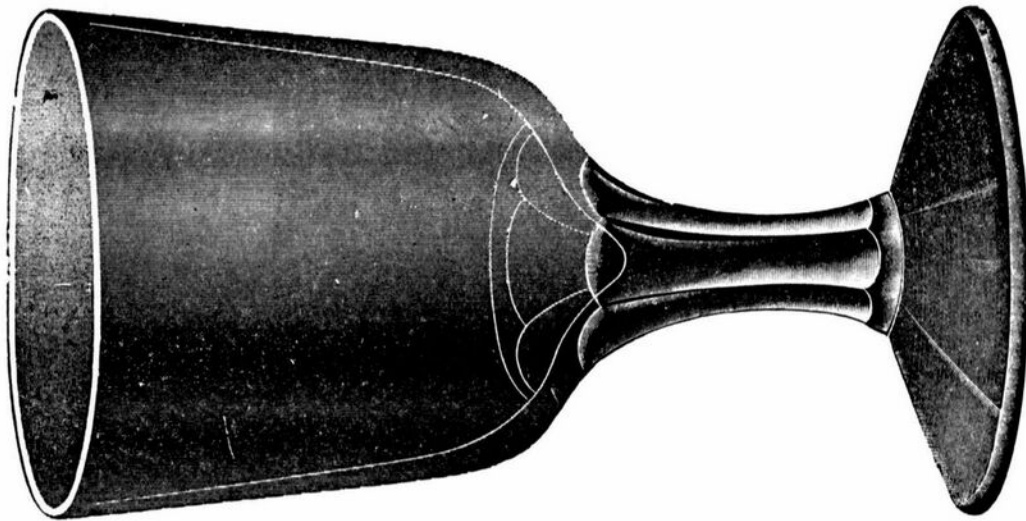
SCALE, FULL SIZE.



No. 980 11 ounce Goblet.
Packed 9 dozen in a barrel.



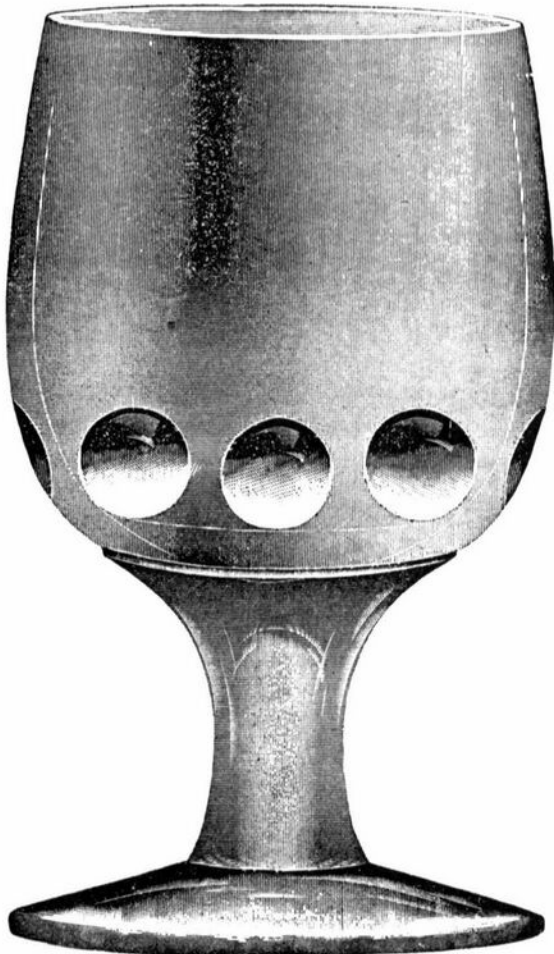
No. 700 11 ounce Medium Hotel,
Cup Foot.
Packed 9 dozen in a barrel.



No. 701 11 ounce Goblet,
Cup Foot.
Packed 8 dozen in a barrel.

Pressed Beer Goblets, Cup Foot.

SCALE, FULL SIZE



No. 707 13 ounce Heavy Hotel Goblet.
Packed 8 dozen in a barrel.



No. 984 10 ounce Special Beer Goblet.
Packed 9 dozen in a barrel.

Pressed Cocktails, Cup Foot.

169

SCALE, FULL SIZE.



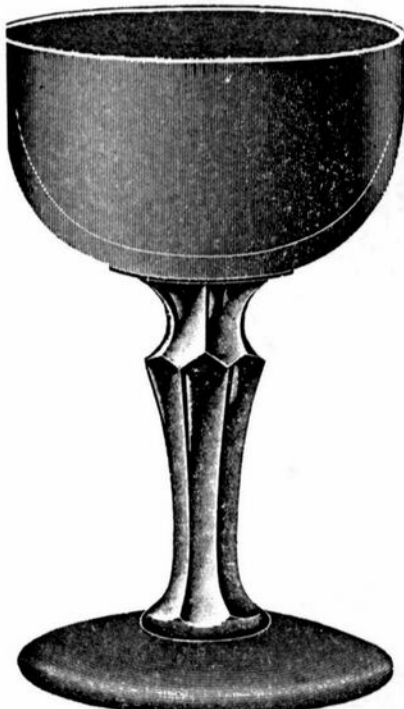
No. 760 2 1/4 ounce Cocktail.
Packed 20 dozen in a barrel.



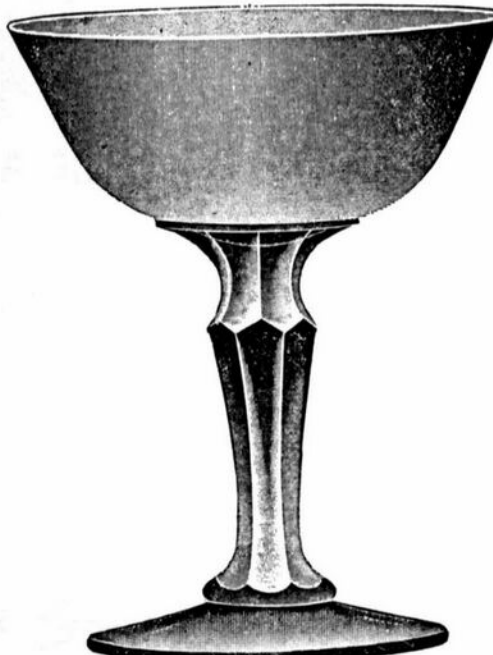
No. 761 3 ounce Cocktail.
Packed 28 dozen in a barrel.



No. 762 3 ounce Cocktail.
Packed 20 dozen in a barrel.



No. 763 3 1/4 ounce Cocktail.
Packed 20 dozen in a barrel.



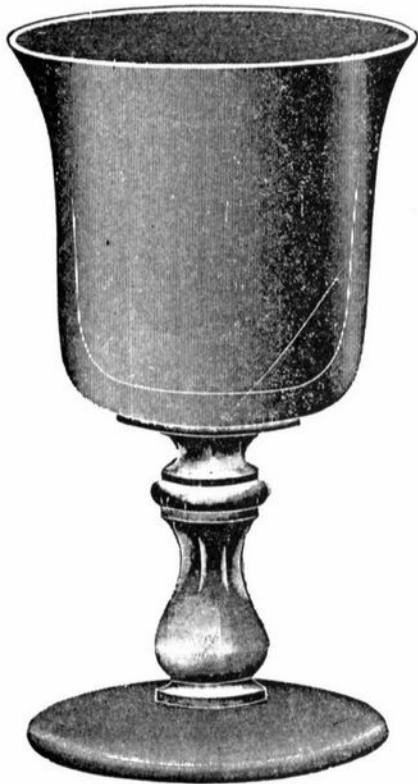
No. 763 1/2 3 1/4 ounce Cocktail
Packed 20 dozen in a barrel.



No. 764 3 1/4 ounce Cocktail.
Packed 20 dozen in a barrel.

Pressed Hot Whiskies, Cup Foot.

SCALE, FULL SIZE.



No. 825 4 ounce Hot Whiskey.
Packed 20 dozen in a barrel.



No. 826 5 1/4 ounce Hot Whiskey.
Packed 18 dozen in a barrel.



No. 827 5 ounce Hot Whiskey.
Packed 18 dozen in a barrel.



No. 829 4 1/4 ounce Hot Whiskey.
Packed 22 dozen in a barrel.



No. 828 4 3/4 ounce Hot Whiskey.
Packed 18 dozen in a barrel.

Pressed Rhine Wines and Claret, Cup Foot.

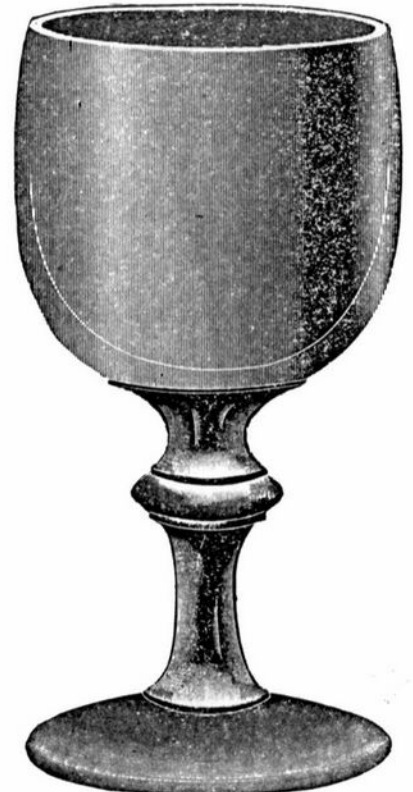
SCALE, FULL SIZE.



No. 900 4½ ounce Rhine Wine.
Packed 20 dozen in a barrel.



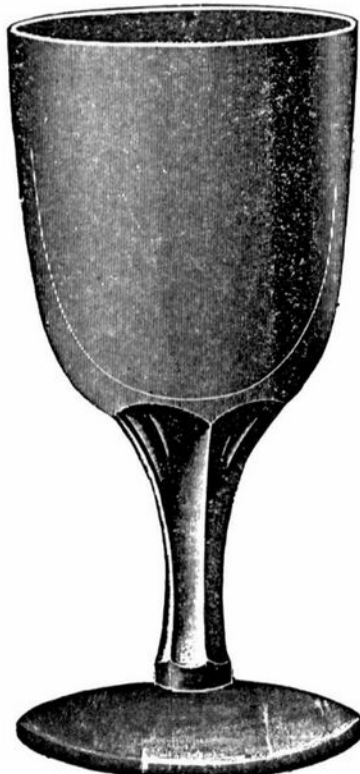
No. 901 4½ ounce Rhine Wine.
Packed 20 dozen in a barrel.



No. 902 4½ ounce Rhine Wine.
Packed 20 dozen in a barrel.



No. 845 4 ounce Wine, Cup Foot.
Packed 25 dozen in a barrel.



No. 679 4 ounce Claret, (Mitchel).
Cup Foot.
Packed 23 dozen in a barrel.



No. 903 4 ounce Rhine Wine.
Packed 20 dozen in a barrel.

Pressed Sherries and High Balls, Cup Foot

SCALE, FULL SIZE.



No. 920 2 ounce Sherry.
Packed 22 dozen in a barrel



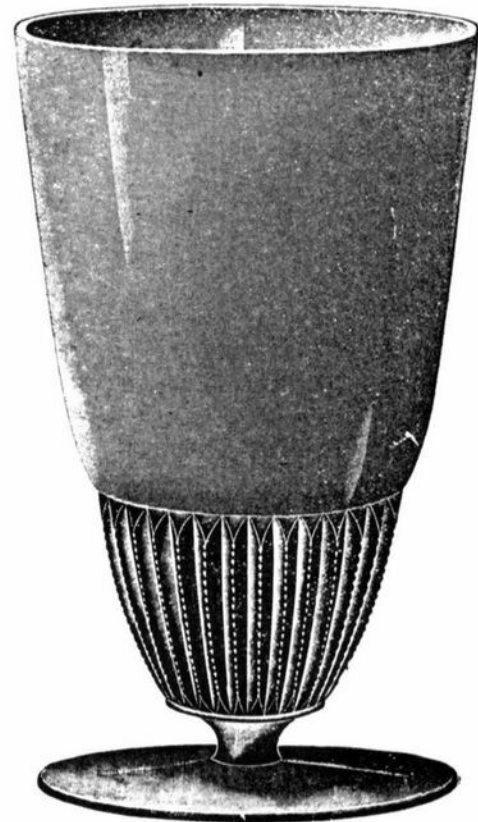
No. 921 1½ ounce Sherry.
Packed 22 dozen in a barrel.



No. 922 2¾ ounce Sherry.
Packed 30 dozen in a barrel.



No. 846 6¾ ounce High Ball.
Packed 17 dozen in a barrel.



No. 758 Scotch High Ball, Straight
Capacity, 9 ounce.
Packed 10 dozen in a barrel.

Cut base for a lamp; #2340 Oil lamp shade. Two #2531C Stand lamps in amber and frosted amber. Doris talked about the alcohol lamps that are very rare to find. Other lamps included: the frosted Dresden Lady; crystal Draped Lady; Buddha in ivory, made around 1924-1926; ebony lamp with gold Rosepoint; and a crown tuscan vase bottom w/cut off top.

Games were led by Charles Upton, winners were Rich Bennett, Sally Bennett, Deanne Gray, and Mary Alice Upton. Christmas gift exchange of Cambridge glass was followed by a Buffet dinner served by our hostess.

submitted by Deanne Gray

**STUDY GROUP #11 - ILLINOIS
"THE CAMBRIDGE NUDES"**

Our Christmas meeting was held December 14th. Beginning with hors d'oeuvres served at the home of Mary Sue Lyon, and the main course served at the home of Toby Macks. There were 11 members and 4 guests present.

Glass, in general, was discussed, followed by "Show & Tell." Many beautiful items were shown.

Glass items shared included: a light emerald cruet etched Gloria; #3400/1185 gold krystal console bowl etched Apple Blossom w/gold rim; light emerald 13" vase etched Chrysanthemum.

A Near Cut inverted Strawberry basket; a Yardley jar; light emerald 8" pedestal vase etched Martha; Cambridge 3" crystal bird; and a light emerald square cigarette box with intaglio etch Hunt Scene.

A light emerald Eagle flower holder on #1 base; #3400 7" light emerald vase etched Apple Blossom; carmen 8" plate w/Sterling decoration; carmen Pinch decanter w/Silver overlay decoration; and a crystal paperweight with Cambridge factory.

A 13" Draped Lady flower holder, tahoe blue #1 base; 13" Draped Lady flower holder, willow blue #1 base; 13" Draped Lady flower holder, alpine #3 base; and a carrara perfume, enamel butterfly decoration by Imperial. Also several other pieces of non-Cambridge.

submitted by Jane Kersey

GLASS THEFT REPORTED

During the month of December, N.C.C. member Melinda Thaxton had a quantity of Cambridge glass and other items stolen from her Fort Wayne, Indiana, storage garage. At the time of this printing a complete list of the stolen items is not available. However, a majority of the glass consisted of pieces from a Royal Blue dinner set and a box of Smoke glass. Also stolen were boxes of toys and several saddles.

If anyone has any information which may help to locate these missing items, please call Melinda's sister, Cindy Arent at 614/432-4582 (collect).

A partial listing of the stolen glass includes: in Royal Blue, #3122 7 oz. tall sherbets (8), 9 oz. goblets (8), and 12 oz. ftd. tumblers (8). A large Smoke bowl and underplate in the Modern line from the reopened period; Modern Smoke candlesticks; and an unknown quantity of Jefferson stemware in Smoke.

**NOTES FROM A PENNSYLVANIA STUDY
GROUP - STUDYING CAMBRIDGE GLASS!**

Our November 10th meeting in Lansdale, Pennsylvania was a great hit! We chose a new name, outlined our objectives, saw a color which had been elusive to all members (even after ten years of collecting).

The members have voted in the name of "Elegant Glass Collectors Club." All members collect Cambridge and that will continue to be the majority of topics discussed. A number of the members collect other manufacturers of elegant glass. We realized we needed to address these other glass companies in an effort to specify what was truly Cambridge glass or another glass manufacturer.

The Elegant Glass Collectors Club would like to welcome Steve Taylor and his friend, Amy, to our meeting. All are welcome - especially if they have objects to show such as Steve. He brought to the meeting a beautiful Nautilus shell in the color Bluebell. If you have never seen this color, look it up. This color is beautiful in any piece, but was intensified in an object larger than 10". All jaws dropped to the floor when this beauty was unwrapped. Unfortunately (but very wisely) Steve did not succumb to the numerous bids for his glass.

continued on page 16

— Classified —

FOR SALE: Cambridge Glass, etched Hunt Scene. Light emerald green, goblets, sherbets, cocktails, finger bowls, plates. 59 pieces perfect, 24 pieces imperfect. Make offer. Sylvia Huelman, 1358 Goldsmith Dr., Westerville, OH 43081. Phone: 614/891-1076.

WANTED: Cambridge Rosepoint. Mint condition. Stem #3121. Send price list to: Jay Choquette, RR 1, Box 51, Upland, NE 68981.

PA. STUDY CLUB . . . continued from page 15

Our next meeting will be at the home of Diane and Ed Chamberlain on March 15, 1992. A suggestion brought up was to meet at an outside Flea Market that most members attend anyway. We will let you know when we are meeting, and if it is at Shupp's Grove, the Extravaganza, or another spot. This presents the opportunity to look at a wide array of glass, discuss its origin and price. We need this kind of input in the field. All are welcome to attend these meetings.

We also discussed having a Flea Market for those items we are willing to part with. This will include items bought years ago and changing tastes have ruled them out of our permanent collections, and items bought mistakenly, identified as Cambridge.

We look at this club as an opportunity to forge friendship with those who have a common interest (no matter what age). To see and appreciate glass that we may not be able to afford to collect (price & display space are both limiting factors), and to make a network of people who are on the lookout for patterns we collect. We can't go to every glass show or flea market, but if we have five friends who are looking for our particular design, then we've increased our possibilities for a full collection fivefold. We are also looking for their items, so this becomes a symbiotic relationship.

Considering the contacts we've made, friendships and knowledge we've gained, joining a Glass Club has been a fun way to learn and collect Cambridge glass.

submitted by Laura & Windsor Tracy

NEIL ROSS

P.O. BOX 485
MONTVALE, VA 24122

(703) 947-2399

(Call between 8 am and 10 pm, EST)

FOR SALE

#1066

Royal blue sherbets (6).....\$ 23
Royal blue cocktails (8).....\$ 22
Amethyst cocktails (12).....\$ 14
Mandarin gold goblets (9).....\$ 14

#3500

Carmen low sherbets (12).....\$ 30
Carmen goblets (4).....\$ 38
Amber tall sherbets (7).....\$ 18

#3077

Cobalt II ftd. ice teas (5).....\$ 25
Cobalt II sherbets (2).....\$ 23

Rosepoint

#3400/4 12" bowl.....\$ 60
#3121 low sherbets (4).....\$ 20
#3900/126 3-part, 12", celery
relish.....\$ 50

Chantilly

#3900/24 10½" dinners (4).....\$ 115
#3779 sherbets (11).....\$ 16

Wildflower

#968 2-piece cocktail icers
(4).....\$ 62.50
#3400/4 12" bowl.....\$ 60

Royal Blue

#3400/152 Doulton Jug with 5
barrel tumblers, set.....\$ 295

Regency - Stradivarius

Goblets (3).....\$ 23
Sherbets (12).....\$ 22
Cocktails (4).....\$ 15

Rondo

Goblets (10).....\$ 16
Sherbets (10).....\$ 13

PRICES EACH, EXCEPT AS NOTED
SHIPPING, HANDLING & INSURANCE EXTRA

L. A. MANESS

RT. 1, BOX 552, ASHLAND, VA 23005
(804) 798-1825

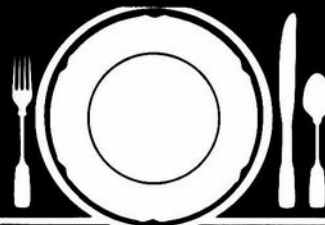
C = MARKED P & I \$3.50 CTN

#1321 amethyst 28 oz. decanter w/crystal stopper.....\$	49
#138 light emerald cream & sugar w/#520 etch C.....\$	50
#3400 crystal 3-part relish, w/#615 cutting.....\$	47
Decagon Blue Willow flat cream & sugar set.....\$	35
Decagon Blue Willow cup & saucer C (3) set.....\$	17

CRYSTAL CAPRICE

Comport 7" ftd. w/Silver decor..\$	25
Bon Bon 7" hld. w/Silver decor.\$	25
Goblet #1 10 oz. (6) each.....\$	27
Cabaret 4 ftd. 14" Plate.....\$	35
Mayo 5½" w/liner.....\$	25

VISA/MASTERCARD WELCOME



How to Find Those Missing Pieces.

The world's largest source of discontinued and obsolete crystal -- as well as china and flatware -- Replacements, Ltd., buys and sells over 36,000 different patterns.

If you need a piece or several pieces to add to your collection ... or if you'd like to sell some unneeded extras ... call or write us. We can provide you with a complete printout of available pieces in your pattern. Or we'll let you know our prices for the pieces you wish to sell.

Replacements, Ltd.: a 100,000 square foot facility; 1.4 million pieces; over 600,000 satisfied customers. Contact us, or come see our showroom. Let us help you complete your collection ... or maybe you'll help add to ours.

REPLACEMENTS, LTD.

Call (919) 697-3000, FAX (919) 697-3100, or write:
1069 Knox Road • P. O. Box 26029, Dept. C • Greensboro, NC 27420

OVER 6800 CAMBRIDGE PIECES

Aladdin

ELECTRIC LAMPS, 1930-1956

ALADEX • VELEX • OPALIQUE • ALACITE

Deluxe Hardbound - Color - 229 pages
\$24.95 ppd. - Add \$3 for first class

Order your Book from the Author:
J.W. COURTER
R-1 • Simpson, IL 62985

FOR SALE

#3900/114, 14 oz. Martini Jug

Etched WILDFLOWER

\$ 300

MICHAEL KRUMME
P.O. Box 5542
Santa Monica, CA 90409-5542
(213) 936-4214

CLASSIQUE GLASS CO.

P.O. Box 52572, Tulsa, OK 74152
(918) 744-5409

CAPRICE IN COLOR

13" Torte plate, blue alpine...\$	75
8½" plate, blue alpine (7).....\$	40
8½" plate, pistachio (2).....\$	40
Cup & saucer, pistachio.....\$	45
Cup (no saucer) pink (2).....\$	36
4" Shell bon bon 3-ftd., blue	

alpine.....\$ 26

Tall sherbet #2 molded blue (4)\$	36
Low sherbet old design blue (2)\$	30

REGENCY (STRADIVARIUS) STEMS

Goblets (11) \$24; Ice teas (4) \$	23
Champagne (12) \$21; Sherbet (4)\$	18

TALLY-HO

Crystal punch ladle.....\$	37
Carmen 5" jar/metal lid.....\$	28

Elaine, E/gold, 24 pcs., call/write
Yellow Apple Blossom....call/write

Mint Unless Noted - UPS & INS. Extra
If we're out, please leave word on
machine. We will return your call!

COLUMBUS ANTIQUE FLEA MARKET

11th
Year

(ANTIQUES AND COLLECTIBLES)

11th
Year

MARCH 1st

Ohio State Fairgrounds - Lausche Building - Off I-71 Exit 17th Ave.

SUNDAY ONLY - 7 am-4 pm

Early buyers welcome 4 AM

1992 SCHEDULE 1992

APRIL 5th * SEPTEMBER 6th * OCTOBER 11th * NOVEMBER 8th * DECEMBER 13th

150 Quality Dealers

SELLING: Advertising, Art Deco, books, Cambridge, clocks, coins, collectibles, depression glass, dolls, Fiesta, fine early furniture, Heisey, jewelry, lamps, oak furn., postcards, pottery, good primitives, tools, toys.

Show admission \$1.50 * Children under 12 free

Heated/Air Conditioned * Concession



*"The Friendly
Family Business"*

4214 North High Street, Columbus, Ohio 43214
(614) 267-8163 (614) 263-6830 (614) 885-2352

The

DAZE

***SPECIAL OFFER**
to NCC friends \$2. off
the 1 year subscription
price when on this form
or copy of.

The Original National monthly newspaper dedicated to the buying, selling & collecting of colored glassware and china including Depression Glass and the Elegant Glass (Cambridge, Heisey, Fostoria, etc.) We educate and inform you each month with feature articles by top notch columnists, readers "finds", club happenings, show news and a multitude of ads. Find those missing pieces to your 30s, 40s or 50s pattern. Can't identify it? Perhaps we can help "Keep up with what's happening with a subscription to the DAZE. Buy, sell or trade from the convenience of your easy chair.

Name _____ Street _____

City _____ State _____ Zip _____

1 yr \$19 2 yrs \$37 \$2. Single Current Copy

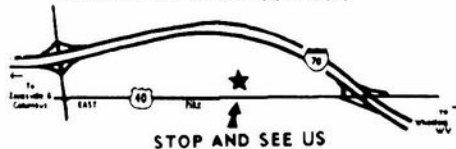
Exp date _____ Card No. _____

Signature _____

Orders to D.G.D., Box 57NC, Otisville, MI 48463
Please allow 30 days for your first issue. Canadian subscribers, add \$1.
per year and subscribe by charge card only! This Special Offer may not be
combined with any other special offer.

Stage Coach Antique Mall

WELCOME TO GLASS COUNTRY



STOP AND SEE US

RT. 40 ONE-HALF MILE WEST OF I-70 EXIT #164
MANY DEALERS - WIDE SELECTION - PLENTY PARKING

WE FEATURE GLASSWARE OF:
CAMBRIDGE, HEISEY, FENTON & FOSTORIA
Plus Art Pottery & a General Line of Antiques

DORIS AND ROY ISAACS
BUY AND SELL
614-872-3720



7525 EAST PIKE
NORWICH, OHIO 43767

MON THRU SAT 10-5:30 SUN 12-5:30
SUMMER EVENING HOURS BY CHANCE

DEALERS



DIRECTORY

NOTE: When writing to the Dealers listed here, please enclose a SASE!

<p>SANDY'S ANTIQUE MALL 617 Wheeling Ave. Cambridge, OH 43725 Phone 614-432-2570</p> <p>COLLECTOR'S ITEMS</p> <p>Summer 9-6 Daily * Winter 9-4:30 Mon-Sat</p>	<p>BENICIA ANTIQUE SHOP 305 First Street Benicia, California 94510</p> <p>OPEN 11 AM - 5 PM Closed Monday</p> <p>Z. E. LOPES 707-745-0978</p> <p>VISIT HISTORIC BENICIA and its 28 shops Off Interstate 80 North of San Francisco</p>	<p>THE MUTED SWAN ANTIQUES 5486 Peachtree Rd. Chamblee, GA 30341 Heart of Camblee Antique Row Specializing in Cambridge, Heisey and Fostoria</p> <p>Bill & Pat Miller 404-451-7620</p>
<p>MILBRA'S MATCHING SERVICE P.O. Box 363, Rio Vista, TX 76093 Milbra Long 817-645-6066 FOSTORIA * CAMBRIDGE * HEISEY DEPRESSION ERA GLASSWARE BUY AND SELL</p>	<p>ANTIQUE'S ON THE MALL SPECIALIZING IN CAMBRIDGE GLASS Stagecoach Mall - Bldg 3 - Norwich, OH Virginia Bennett 614-432-4483 64183 Warne Drive, Cambridge, OH 43725</p>	<p>YOU CAN ADVERTISE YOUR ANTIQUE SHOP HERE!</p>
<p>THE GLASS URN 456 West Main Street, Suite G Mesa, AZ 85201 602-833-2702</p> <p>Mail Order Shows Open Shop</p> <p>CAMBRIDGE, FOSTORIA, HEISEY, ETC.</p>	<p>D & D ANTIQUES Columbus, Ohio</p> <p>Dick Slifko SHOWS ONLY</p>	<p>GATEWAY ANTIQUE MALL 21122-134th Avenue North, Rogers, MN 55374 I-94 & 101 (Exit #207, Turn North) Open 10-6, 7 Days 612-428-8286 Elaine Storck, Proprietor* Diane Overson, Manager</p>
<p>ETTELMAN'S DISCONTINUED CHINA & CRYSTAL Cambridge a Speciality</p> <p>P.O.Box 6491-CB Corpus Christi TX 78466 Phone 512-888-8391 Include S.A.S.E.</p>	<p>JUDY'S ANTIQUES Judy Bennett 422 S. Ninth Street (Corner of Jefferson) Cambridge, Ohio 43725 BUYING Ph.614-432-5855 SELLING CAMBRIDGE GLASS MY SPECIALTY</p>	<p>DEER TRAIL ANTIQUES RONI SIONAKIDES 517-669-5981 6565 W. Herbison Rd. DeWitt, MI 48820 Fostoria, Tiffin, Duncan, Cambridge</p>
<p>THE GLASS CUPBOARD 39 Shire Oaks Drive Pittsford, New York 14534</p> <p>Marcia Ellis Cambridge, Duncan Miller 716-586-7596 Shows, Mail Order, Appt.</p>	<p>GREEN ACRES FARM 2678 Hazelton Etna Rd., Pataskala, OH 43062 (State Route 310 North)</p> <p>Sat & Sun 1-7 PM 614-927-1882 Antiques, Crystal Glass and Collectibles</p>	<p>"HAPPINESS IS" Buddy and Kathy Stultz 3106 Warren Court, Glen Allen, VA 23060 804-672-8102</p> <p>Write or Call Us ----- We Do Ship</p>
<p>ELEGANT GLASSWARE Barbara Brock 26 Fayette St. Martinsville, VA 24112 804-724-6762</p> <p>Cambridge - Heisey - Duncan - Fostoria</p>	<p>REMEMBRANCES 7597 Daphne Dr., No. Syracuse NY 13212 Shirley S. Ladouceur 315-458-5297</p> <p>ANTIQUES and COLLECTIBLES MAIL ORDER SHOWS APPOINTMENTS</p>	<p>CROW'S NEST ANTIQUES Constance Crow Buying & Selling Elegant Depression Era Glassware</p> <p>Austin Antique Mall 8822 McCann Austin, TX 78758 512-371-0244</p>
<p>YOU CAN ADVERTISE YOUR ANTIQUE SHOP HERE!</p>	<p>PATCHES OF VIRGINIA Specializing in China and Glass Virginia T. Houston</p> <p>34116 Roberts Rd., Eastlake, OH 44095 Phone: 216-975-8315</p>	<p>CRYSTAL LADY 1817 Vinton St., Omaha, NE 68108 Joann D. Hagerty</p> <p>Bus. 402-341-0643 Res. 402-391-6730 Specializing in Elegant Glass & Collectibles</p>
<p>YOU CAN ADVERTISE YOUR ANTIQUE SHOP HERE!</p>	<p>GLASS RESTORATION BRILLIANT CRYSTAL ELEGANT DEPRESSION</p> <p>DON & LYNNE WORMLAND MT. CLEMENS, MICH 313-468-3519</p>	<p>MARGARET LANE ANTIQUES 2 E. Main St., New Concord, OH 43762 Lynn Welker 614-826-4418</p> <p>Cambridge Glass Matching Service Hours Mon-Fri 1-5 PM or by Appointment</p>
<p>GLASS RESTORATION BRILLIANT CRYSTAL ELEGANT DEPRESSION</p> <p>DON & LYNNE WORMLAND MT. CLEMENS, MICH 313-468-3519</p>	<p>WATKINS (Fine Quality) CAMBRIDGE GLASS SHOP 1429 Marquand Ave. (Corner of Woodlawn) Cambridge, OH 614-432-4460 Lana Watkins</p>	<p>HELEN & JIM KENNON Heisey, Cambridge, Fostoria, Duncan, Imperial, Fenton, Tiffin</p> <p>P.O. Box 114, Brookville, OH 45309 PH: 513-833-5406 SHOWS ONLY</p>



National Cambridge Collectors, Inc.

P. O. Box 416, Cambridge, Ohio 43725

A nonprofit organization dedicated to the preservation and study of Cambridge Glass

You Are Cordially Invited
To Become A Member Of The

NATIONAL CAMBRIDGE COLLECTORS, INC.

Benefits derived from membership include: receipt of our club publication, The Cambridge CRYSTAL BALL; informative Quarterly Meetings; Antique Shows; Auctions; other special events; and unlimited admission to the museum.

The Cambridge CRYSTAL BALL is published the first of each month. This newsletter contains educational and interesting articles, questions and answers, information on reproductions and reissues, notices of all club functions, classified advertisements, dealers directory, and many other features of interest to collectors of Cambridge Glass. Yearly dues are \$15.00 for Individual Members and \$3.00 for each Associate Member. All members have voting rights, but only one issue of the CRYSTAL BALL will be mailed per household.

Name (please print) _____ \$15.00

Mailing Address _____

City _____ State _____ Zip _____

Associate Members: (Must be at least 12 years of age and living in the same household.)

1. Name _____

2. Name _____

3. Name _____

Total number of Associate Members _____ @ \$3.00 each

TOTAL AMOUNT ENCLOSED: \$ _____

Please make check payable to: NATIONAL CAMBRIDGE COLLECTORS, INC.

Recommended by _____



VALENTINE'S DAY

by Paul E. White

Pick yourself a Valentine,
One that has lots of heart,
A true one that beats in rhythm
With yours, and makes yours start.
The one with staying power,
That one you can't forget,
The old one who never changes
Year in, year out. And yet
If full of exciting surprises
A new thrill for Valentine
Someone familiar but ever new,
Like that favorite one of mine!

NCC Museum of Cambridge Glass

The museum is located on U.S. Route 40, one-eighth mile east of I-77 near Cambridge. Hours: 10 a.m. to 4 p.m., Wednesday through Saturday; noon to 4 p.m., Sunday (March through October). Phone 614/432-4245. Closed Mondays, Tuesdays, Easter and the Fourth of July.

National Cambridge Collectors, Inc.
P. O. Box 416, Cambridge, Ohio 43725

FIRST CLASS MAIL

FIRST-CLASS MAIL
U.S. POSTAGE
PAID
So. Vienna, Ohio
45369
Permit No. 15

Membership Renewal Notice

This is your last issue of the *Crystal Ball*—if the date on your address label reads 2-92.

Please renew now!