



Cambridge Crystal Ball

Published monthly by the National Cambridge Collectors, Inc.
to encourage and report the discovery of the elegant and boundless product
of the Cambridge Glass Company of Cambridge, Ohio

Issue No. 234

October 1992

MUSEUM MOMENTS

by J. D. Hanes

As I write this in early September, we all send our hopes and prayers that all of our members in Florida and Louisiana survived hurricane Andrew's fury. I did get a phone call through to Mark Nye on the Monday night that the hurricane hit his area. I'm sure he will tell more in his article, but he did make it through relatively unharmed.

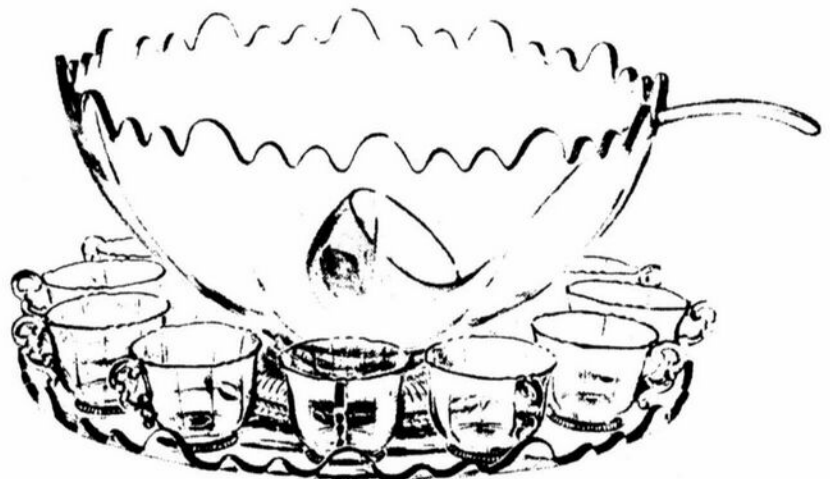
On to what is happening with the Museum. July and August were both great months for visitors. We had a bus group from Mansfield. They had read about the museum in the Ohio Pass magazine, and they had very kind words for the museum and all the displays.

In August I also had some "non-human" visitors. The one that I see all the time I have named A.J. I think you can guess after whom. He (or she) is a rather large ground hog who has a large hole, and apparently a series of tunnels, under the storage building. Many times he sits and watches me as I go to get items for the museum. But, he never lets me get too near before he takes off into his hole. The other one is a beautiful deer. It looks to be about an 8 point buck. The last one, that I hope is gone, is a snake. Snakes are one thing that I cannot stand. Needless to say, I am very aware of looking down on the way to the storage building anymore.

In last month's article I promised to write more about the Martha punch bowl set that Peg and Dale Gotschall donated at the Convention. This set has a very interesting history. According to Peg, she was given this set by William Booth who was an employee at the factory.

He worked until the contents of the factory were sent to Imperial. This punch set was a "loaner." The factory would loan it to civic groups and apparently private individuals for use at receptions, etc. When the last group who had borrowed it returned it, there was no one at the factory, so they took it to Mr. Booth.

continued on page 3



Martha—15 pc. Punch Set
1—478 15 in. Bowl (10 qts.)
12—488 5 oz. Cups
1—111 ladle
1—129 18 in. Tray

Cambridge Crystal Ball

Official Publication of National Cambridge Collectors, Inc. a non-profit corporation with tax exempt status. Published once a month for the benefit of its members. All rights reserved; reproduction in whole or in part without written permission of NCC and the author is prohibited.

Membership is available for individual members at \$15 per year and additional members (12 years of age and residing in household) at \$3 each. All members have voting rights, but only one *Crystal Ball* will be mailed per household.

Back issues of the *Crystal Ball* are available (beginning with Issue No. 1, May 1973) for members only. Cost: \$1.00 each or 12 issues for \$10.00.

1992-93 Officers & Committee Chairpersons

President	Joy R. McFadden
Vice-President	Marybelle Moorehead
Secretary	Joe Andrejcek
Treasurer	David B. Rankin
Sergeant-at-Arms	Cynthia A. Arent
Acquisitions	Joe Andrejcek
Budget & Finance	David B. Rankin
By-Laws	Tarzan Deel
Membership	J. D. Hanes
Museum--Facilities	Doyle Hanes
Museum--Interior	J. D. Hanes
Non-Glass Items	Judy Momirov, Tarzan Deel
Nominating	Mark A. Nye
Program	Willard Kolb
Project	Tarzan Deel
Publications	Mark A. Nye
Public Relations	Mark A. Nye
Publicity	Cynthia A. Arent
Study Group Advisor	Judy Momirov
1993 Auction	Lynn M. Welker
1993 Antique Show	Mary Beth Hackett
1993 Convention	Marybelle Moorehead
1993 Flea Market	Marlene & Harold Snyder
Crystal Ball Editor	Sue Rankin

Classified Advertising Rates

10 cents per word \$2.00 Minimum
We cannot mix type size in classified advertisements. Abbreviations and initials will count as words. Payment in full must accompany all ads.

Display Advertising Rates

(Camera-ready ads preferred)	Members	Non-Members
1/8 page	\$6.00	\$10.00
1/4 page	10.00	15.00
1/2 page	18.00	25.00
3/4 page	25.00	35.00
Full page	33.00	45.00

Dealers Directory

Six-line maximum \$18.00 for 12 months

Cambridge *Crystal Ball* assumes no responsibility for items advertised and will not be responsible for errors in price, description or other information.

Advertising copy, articles, club news and notices must be in our P.O. Box by the 5th of each month to assure publication in our next issue.

Paid advertisements containing reproductions or new glass will not knowingly be accepted for publication.

Opinions or information stated in any signed article or letter printed in the *Crystal Ball* are those of the authors and may or may not agree with National Cambridge Collectors, Inc. The Editor reserves the right to refuse and to edit any material submitted for publication to conform with the editorial style of the *Crystal Ball*.

Please Address All Correspondence to:

National Cambridge Collectors, Inc.
P.O. Box 416, Cambridge, Ohio 43725-0416
President -- Joy R. McFadden 614/885-2726
Secretary -- Joe Andrejcek 216/226-3417
Editor -- Sue Rankin 513/833-4626
N.C.C. Museum -- 614/432-4245

Please notify us immediately of any change in your address.

Please enclose an SASE when requesting information.

CAMBRIDGE GLASS BOOKS FOR SALE

By National Cambridge Collectors, Inc.

- **Colors in Cambridge Glass ***
128 pages, 60 color plates, fully indexed
Hardbound with price guide. \$19.95
 - **1930-34 Cambridge Glass Company Catalog Reprint ***
250-page reprint of original catalog
Paperback with price guide. \$14.95
 - **1949-53 Cambridge Glass Company Catalog Reprint ***
300-page reprint of original catalog
Paperback with price guide. \$14.95
 - **1956-58 Cambridge Glass Company Catalog Reprint ***
164-page reprint of original catalog
Paperback. \$6.95
- * For NCC members only, the above publications are available at a 10 percent discount.

By Bill and Phyllis Smith

- **Cambridge Glass 1927-1929**
60-page reprint of original catalog
Paperback w/identification guide. \$7.95

By Cambridge Buffs Study Group

- **Nearcut**
108-page reprint of 1910 Cambridge catalog
Paperback with price guide. \$9.95
- **Price Guide**
Updated price guide for Nearcut Catalog reprint (including postage). \$3.00

By Mark A. Nye

- **Cambridge Rose Point**
94 pages, fully indexed
Paperback with value guide. \$12.95
- **Value Guide**
Updated value guide for Rose Point book (including postage). \$5.00

By Mary, Lyle and Lynn Welker

- **Cambridge Glass Company**
120 pages of reprints from eight old catalogs
Paperback. \$10.00
- **Cambridge, Ohio Glass in Color II**
Spiralbound. \$5.95

By Harold and Judy Bennett

- **1903 Cambridge Glass Company Catalog Reprint**
106-page reprint of an original catalog
Paperback. \$7.50

Address your orders to:

Books
National Cambridge Collectors, Inc.
P.O. Box 416
Cambridge, OH 43725-0416

Please add postage and handling to your order (first book, \$2.00; each additional book, 50 cents), Ohio residents add 6 percent state sales tax.

Dealer discounts available - please write!

MUSEUM MOMENTS - continued from page 1

At this time, Peg and Dale were neighbors of Mr. & Mrs. Booth. Mrs. Booth had health problems and Peg Gotschall helped in caring for her. During the years, the friendship grew and so did the Gotschall's love of Cambridge Glass. One day, in appreciation of the Gotschall's friendship and help with Mrs. Booth during her illness, Mr. Booth gave this punch set to the Gotschall's. The set consisted of the punch bowl and 46 punch cups. Mr. Booth said that it probably had 48 to begin with and an under plate but two cups and the under plate had been broken.

In later years, the Gotschall's used this set and went to the trouble of finding an under plate for it. When the Gotschall's donated this to the Museum, they said for us to put it on display or use it at club functions or both. The opinion of the Museum Committee is to do both. We hope to have a special case for it and use it at club functions such as the November Quarterly Meeting and the Former Workers Reunion. We are also going to have the history of this punch set printed and placed in the case with the set. I hope to have a picture of this set for the Crystal Ball in an upcoming issue.

I should also remind you that the museum will be closing for the season on October 31. We will reopen on March 1, 1993. If you are thinking of a nice weekend "getaway" type trip, southeastern Ohio is beautiful in the fall. (See map on page 20).

I hope to see many of you at the November Quarterly meeting. Until next month, take care!

1949-53 Catalog

by Mark A. Nye

National Cambridge Collectors, Inc., in conjunction with Collectors Books, in 1978 published a reprint of the 1949 Cambridge Glass Company catalog. This reprint contains the original 1949 catalog and all of the then known supplements issued between June 1949 and the initial plant closing in 1954. Thus it has been designated the 1949-53 catalog reprint. A great deal of effort went into the preparation of this reprint, especially when it came to determining the existence of supplemental pages, approximating the dates they were issued, and locating copies suitable for reprinting. The NCC members involved in this work are to be commended.

Recently, a previously unknown catalog page, issued as a supplement to the 1949 Cambridge catalog, was found. Numbered 154-C, this page shows No. 3796 Cambridge Circle and No. 3797 Cambridge Square stemware. It was probably issued during the summer of 1951 as this is when these two lines were first advertised in trade journals. While no new information is gained from this page, one more small piece to the giant puzzle that is the history of Cambridge falls into place. A reprint of the page accompanies this article.

The catalog in which the new page was found also contained a copy of Cambridge Circular Letter # 13 issued January 3, 1951. The first sentence of the letter is somewhat ambiguous: "We are sending with this letter a new index for catalog dated September 1950 and the following new illustrated pages: ". The index is dated September 1950 and there is no question about that, but one can also interpret the sentence to mean there is a catalog dated September 1950. At this point, the assumption is that the sentence was poorly constructed and that the new index was intended for the catalog issued June 1949 combined with its subsequent supplements. Reprints of the letter, the original June 1949 catalog index and the September 1950 index accompany this article.

From the contents of the letter, we now have an accurate date for the actual issuance of the listed catalog pages. We also now know that while the index is dated September 1950 it was probably not issued until January 1951.

The items shown on the supplemental catalog pages issued in January 1951 may have already been in the Cambridge line for several months. A price list dated September 1950 has been known for a number of years. It contains listings for the items illustrated on the pages listed in the January 3, 1951, Circular Letter #13. Since Circular Letter #13 did not mention the September 1950 price list, it is probably a safe assumption that the price list had already been distributed. Items often appeared on price lists before their appearance on catalog pages.

In a future issue, a revised FOREWORD to the 1949-53 catalog reprint will be published.

I thank Mary Martha Mitchell for sharing the catalog page and circular letter with us.

[The next five pages show the new catalog page; Circular Letter #13 dated January 3, 1951; the original June 1949 index; and the September 1950 index.]



Cambridge Circle



3796
Goblet



3796
Sherbet



3796
Cocktail



3796
5 oz. Ftd. Tumbler

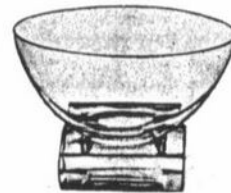


3796
1 oz. Cordial

Cambridge Square



3797
Goblet



3797
Sherbet



3797
Cocktail



3797
Cordial



3797
5 oz. Ftd. Tumbler

January 3, 1951

CIRCULAR LETTER #13
TO ALL AGENTS

We are sending with this letter a new index for catalog dated September 1950 and the following new illustrated pages:

2-A - Caprice
8-E-F - Pristine
50-D - Rose Point
90-A-B)
90-C-D) Roselyn
90-E)
106-A - Festoon
114-A-B - Lily of the Valley-Lynbrook
146-J-K - Misl. and Granada
146-L - Granada
152-B-C - Emer and MG - Carmen
152-D - Carmen
154-A - Simplicity Stemware
157-A-B - 1401 Stemware - Game Sets
157-C-D - Misl.- D/1063
157-E - D/1063
158)
159-160)
161-162) Cambridge Arms
163-164)
165-166)
167)

This now completes all illustrations of everything in the line except the new items just brought out for January 1951.

Complete supplement with the new index is now in the process of being mailed to all accounts that have had our catalog and a complete catalog is being mailed to all that had not had a catalog.

Yours truly,
THE CAMBRIDGE GLASS COMPANY
H.A.Lovelady

mj

INDEX

June 1949

PRESSED WARE

	Page
Caprice.....	1-2-3
Cascade.....	41-42-43-44
Corinth.....	37-38-39-40
Crown Tuscan.....	30-31-32
Mount Vernon.....	4-16-25
Pristine.....	5-6-7-8
3400.....	9
3500 (Gadron).....	10

MISCELLANEOUS

Candlesticks.....	11
Candelabra.....	12-13
Decanters.....	16
Epergnes.....	14
Flower Arrangers.....	17
Hurricane Lamps.....	15
Punch Sets.....	18-19
Salt and Pepper Shakers.....	20
Smokers' Items.....	21-22
Swans.....	23
Tumblers.....	24-25
Vases.....	26-27
Other Miscellaneous Items.....	28-29

PLATE ETCHINGS

Goblets.....	33
Candlelight.....	52-53-54-55-56
Chantilly.....	57-58-59-60-61-62-63
Diane.....	64-65-66-67-68-69
Elaine.....	70-71-72-73-74-75-76
Portia.....	77-78-79-80-81-82-83-84
Rose Point.....	45-46-47-48-49-50-51
Wildflower.....	85-86-87-88-89-90

Continued

INDEX

June 1949

ROCK CRYSTAL

	Page
Goblets.....	34-35-36
Achilles (698).....	91-92-93
Adonis (720).....	94-95-96-97
Ardsley (1005).....	98
Belfast (942).....	136-137
Bexley (1014).....	99
Bijou (1011).....	100
Cadet.....	101
Carnation (732).....	138
Celestial (600).....	139-140
Cordelia (812).....	102
Croesus (722).....	103
Deerfield (1033).....	104
Euclid (1017).....	105
Fuchsia (1019).....	106
Glendale (1028).....	107
Hanover (1015).....	108
Harvest (1053).....	109
Juliana (997).....	110
Kimberly (1043).....	145
King Edward (821).....	111-112-113
King George (1027).....	114
Ivy (1059).....	143
Landsdowne (1049).....	145
Larchmont (1036).....	115
Laurel Wreath.....	116-117
Lexington (758).....	118
Lucia (824).....	119-120-121
Manor (1003).....	122-123-124
Maryland (985).....	125-126-127
Maywood (1058).....	144
Minton Wreath (1012).....	128
Minuet (990).....	129
Montrose (1004).....	130
Norwood (1041).....	146
Plaza (1018).....	131
Roxbury (1030).....	132
Star (1016).....	133
Tempo (1029).....	134
Wedding Rose (998).....	135
Windsor (500).....	141-142
Miscellaneous.....	144-145-146-147-148

INDEX

September, 1950

PRESSED WARE

	Page
Caprice	1-2-2A-3
Cascade	41-42-43-44
Corinth	37-38-39-40-40A-40B-40C-40D
Crown Tuscan	30-31-32
Mount Vernon	4-16-25
Pristine	5-6-7-8-8A-8B-8C-8D-8E-8F
3400	9
3500 (Gadroon)	10

MISCELLANEOUS

Cambridge Arms	158-159-160-161-162-163-164-165-166-167
Cambridge Game Set.....	157B
Candlesticks	11
Candelabra	12-13
Carmen	152C-152D
Decanters	16
Ebony	148C-148D
Emerald	149-150-151-152-152A-152B
Epergnes	14
Flower Arrangers	17
Hurricane Lamps	15
Mandarin Gold	149-150-151-152-152A-152B
Punch Sets	18-19
Salt and Pepper Shakers.....	20
Smokers' Items	21-22
Stemware—1066	153
Stemware—1401	157A
Stemware—Regency	154
Stemware—3109	155
Stemware—3790	154A
Stemware—7966	156
Stemware—Tuxedo	157
Swans	23
Tumblers	24-25
Vases	26-27
Other Miscellaneous Items.....	28-29-148A-148B-157C

PLATE ETCHINGS

Goblets	33
Candlelight	52-52A-53-54-55-56
Chantilly	56A-57-58-59-60-61-62-63
Diane	64-65-66-67-68-69
Elaine	70-71-72-73-74-75-76
Portia	77-78-79-80-81-82-83-84
Roselyn	90A-90B-90C-90D-90E
Rose Point	45-46-47-48-49-50-50A-50B-50C-50D-51
Wildflower	85-86-87-88-89-90

GOLD DECORATION

D/1063 (Talisman Rose).....	157D-157E
Continued	

INDEX

September, 1950

ROCK CRYSTAL

	Page
Goblets	34-35-36
Achilles (698)	91-92-93
Adonis (720)	94-95-96-97
Ardsley (1005)	98
Belfast (942)	136-137
Bexley (1014)	99
Bijou (1011)	100
Cadet	101
Carnation (732)	138
Celestial (600)	139-140
Cordelia (812)	102
Croesus (722)	103
Deerfield (1033)	104
Euclid (1017)	105
Festoon (1071)	106A
Fuchsia (1019)	106
Glendale (1028)	107
Granada (1068)	146K-146L
Hanover (1015)	108
Harvest (1053)	108A-108B-109
Juliana (997)	110
Kimberly (1043)	145
King Edward (821).....	111-112-113
King George (1027).....	114
Ivy (1059)	142A-143
Landsdowne (1049)	145
Larchmont (1036)	115
Laurel Wreath	116-116A-117
Lexington (758)	118
Lily of the Valley (1069).....	114A
Lucia (824)	119-120-121
Lynbrook (1070)	114B
Manor (1003)	122-123-124
Maryland (985)	125-126-127
Maywood (1058)	144
Minton Wreath (1012).....	128
Minuet (990)	129
Montrose (1004)	130
Norwood (1041)	146
Plaza (1018)	131
Roxbury (1030)	132
Star (1016)	133
Tempo (1029)	134
Wedding Rose (998).....	135
Windsor (500)	141-142
Miscellaneous	144-145-146-146I-146J-147-148
1064	146A-146B
1065	146C-146D
Thistle (1066)	146E-146F
Silver Maple (1067).....	146G-146H

INTERESTING HAPPENINGS IN THE LIFE OF A. J. BENNETT

(as told to me by W. L. (Wib) Orme, Jr.)
by Bud Walker

According to Wib, even though busy running the Cambridge Glass Company, his grandfather never forgot his homeland. About every five years, Mr. A. J. Bennett would return to his place of birth, London, England, to visit his family who remained in England. Upon returning from one of his visits, he let it be known that he had hired a builder who was instructed to build two identical homes. When asked why they were identical, his reply was that, I have two sisters and they are never going to be able to say that I gave one more than the other.

Another time Wib told me that when his grandfather was working in New York as a china importer, he met a young man who wanted him to go into partnership with him in a new type of store. Mr. Bennett would only have had to invest three hundred dollars to become a partner with Mr. F. W. Woolworth when he opened his five and dime store. Mr. Bennett claimed that he knew nothing about that type of store and declined to invest in it. Lucky for us. If he had invested, there probably would have been no Cambridge Glass for us to collect. Mr. Bennett and Mr. Woolworth remained friends for the rest of their lives. Whenever A. J. was in New York, he would either have dinner or stay at Mr. Woolworth's home. Wib told me that his grandfather had a dollar bill that F. W. had given him, and that it hung on the wall behind his desk at the plant.

Now that my friend, Wib, is gone, I truly miss the first hand stories about the plant and the people that made it the success that it was.

President's Message

OCTOBER!

Football, leaves change colors, Halloween and there is a chill in the air. The outdoor yard sales and flea markets decrease in number. How do you occupy your time until Spring?

Please make necessary reservations now to attend the November quarterly meeting. Information can be

found on page 20 for selecting your dinner entree. You will enjoy our entertaining speaker.

After the November meeting, Thanksgiving and Christmas will be upon us before we know it.

After New Year's Day dishes are washed and put away, mark your 1993 calendar for the first NCC event of the year. The auction is always a bright spot at the end of the long winter. Lynn always compiles a really nice assortment of items for the auction. It is a time to see old friends and, perhaps, add a nice item to your collection. If you are unable to attend in person, exercise your option to offer a mail bid. Many of these bidders are successful as evidenced by the number of boxes I helped Lynn pack after the last auction.

I have transported you right back to Spring in just 3 paragraphs. The older I get, the faster time flies.

I look forward to seeing many of you in November. Until then, continue collecting Cambridge glass and may you find a rare collectible just around the next corner.



Club News

On August 13, 1992, at the Ocean City (New Jersey) Civic Center Summer Lecture Series, Bud Walker, of Egg Harbor, New Jersey, gave a talk on the History and Colors of the Cambridge Glass Company.

Bud had approximately one hundred pieces of Cambridge Glass on display. The pieces covered nearly the entire span of production from the early years to the final closing in 1958. More than forty of the colors that Cambridge produced were included in the display.

The color and variety of pieces made by the Cambridge Glass Company created much interest among those present for the final lecture of the 1992 summer season.

Submitted by
Bud Walker

Study Club News

Study Group #15 - Cambridge Collectors of North Texas

The Cambridge Collectors of North Texas met on May 17 at the home of Mary Pfanensteil. Fourteen members and 1 guest were present.

Because the slide show shipped by NCC did not arrive, each member brought several favorite or unusual pieces for a "Show and Tell" discussion. Mary Pfanensteil showed her entire Willow Blue Cleo collection and gave a history on how and where she found the more unusual pieces.

We had no trouble filling time during a very rainy Sunday afternoon.

Submitted by
Margaret Bowman

Study Group #13 - Southwest Ohio "Miami Valley, Ohio"

The Miami Valley (Ohio) Study Group held their meeting September 8 at the Huber Heights Public Library. There were 11 members present and three guests.

Various items of business were discussed including the results of our very successful money raising project held at the convention which netted the group \$616.00 toward the cost of publishing the Etching Book.

Dave Rankin provided an update on the Etching Book project. Jim Kennon and Mac Otten provided an update on the proposed Combined Study Clubs Show with the Heisey and Fostoria study groups.

The Christmas party will be held at the home of Phyllis Smith with our usual gift exchange taking place.

The program consisted of a large "Show and Tell" we entitled Summer Finds. The following items were shown: Crystal Caprice #36 13" cake plate; Ebony Special Articles #14 10" bowl with red-orange enamel decoration; Crystal Caprice #136 7" tall comport; Pistachio Caprice #38 cream and sugar; Crystal Ca-

price powder box and cover; Crystal Everglade #19 12" footed oval bowl, frosted; Crystal Everglade #2 candlestick, frosted; Forest Green Everglade #24 sherbet; Light Emerald frosted Everglade 3 footed nappy; Amber twist candlestick; Crown Tuscan #274 10" footed bud vase; Emerald Green #1401 goblet; Peach Blo #8701 juice E. 726 Poppy; Crystal #7606 6 oz. tall sherbet E. Marjorie; Crystal #532 6" tall comport D/1063 Talisman Rose; Crystal #3725 cocktail Rock Crystal engraved #1011 Bijou; Light Emerald 10 1/2" plate E. 715 Willow with gold encrusted border; Crystal #1195 bathroom bottle E. ALCOHOL; Crystal #2970 Gothic tall crushed fruit jar and cover; Emerald Green #1070 36 oz. pinch bottle with crystal stopper; Milk glass W87 12" covered urn; Crystal #1542 20 oz. Life Saver bottle with enamel and gold decoration; Crystal P.290 6 oz. oil Rock Crystal engraved Rondo; Blue 2 #1917 Plain Ware #20 6 oz. sugar and creamer; Helio #2800 Community 15 1/2" basin; Crystal #3200 Cut Wild Rose 1/2 gal tankard; Crystal #2656 Star 1/2 gal water pitcher; Yardley cold cream jar; Crystal #1263 French Dressing bottle engraved "Oil and Vinegar"; Carmen #1311 4" footed ash tray; Crystal #628 3 1/2" candlestick E. Rose Point; Crystal #1324 decanter, enameled "Here's Looking at You" with golf ball stopper; Milk glass Mt. Vernon W85 4 1/2" puff box and cover with Charleton decoration; Crystal #2860 Lexington 8" footed vase, A shape; Paperweight with hand painted upper portion of Crown Tuscan nude inside; Carmen #3797 Cambridge Square #150 6 1/2" ash tray; Crystal flower pot insert for 10" swan; Emerald Green Caprice #66 13" oval bowl, crimped and 4 footed; Carmen #1408 60 oz. cocktail mixer with chrome churner; Blue Bell #1222 turkey; Amethyst #2651 Feather covered butter - carnival; Moonlight Blue #2 Star 4" candleholders; Moonlight Blue #1327 1 oz. cordial/favor vase; Crystal Tally Ho cordial with engraving; Mulberry #1 4 1/2" muddler; Amber #1 4 1/2" muddler; Forest Green #1330 5" Sweet Potato vase; Crystal #3200 Cut Wild Rose 5 oz. punch cup; Mandarin Gold #1237 9" vase - all one color; Light Emerald #3120 cocktail with crystal stem and foot; Crystal #1041/1050 swan candleholders; Crystal #1043 8 1/2" swan; Willow Blue #647 6" 2-lite candlesticks - pair; Willow Blue #647 6" 2-lite candlestick - same as previous but with holes on outer portion filled in; Crystal #1 Star 2 1/2" candleholder; Moonlight Blue Caprice #62 12 1/2" belled bowl, 4 footed; Willow Blue #513 13" draped lady; Peach Blo #820 serving tray; and Amber #820 serving tray.

Submitted by
Sue Rankin

Hurricane Andrew

by Mark A. Nye

My usual article this month is somewhat shorter than normal since Miami had a most unwanted visitor early Monday morning August 24. I came through with only minor damage to my house but did lose several trees. Surprisingly, I never lost telephone service but was without electricity for seven days. I had stored water prior to the storm and thus was not really affected by the fact that water had to be boiled or purified by some other means before it could be drunk. Water service to my area was maintained and since my hot water heater is gas, I always had hot showers available.

I also have a gas cook stove and for about ten days was cooking not only for myself but a number of other people who were not as fortunate. Until electric power was restored, some of the cooking was done in the evening by candlelight. (A Cambridge candelabra no less!)

While I suffered little damage, some friends and their neighbors living farther south were not so fortunate. I spent most of the two weeks following the storm helping them remove trees, obtaining supplies, and making emergency roof repairs. Never in my wildest dreams did I ever expect to be a roofer!

Besides the damage to homes, businesses and the human suffering well documented in the news media, the storm also had a disastrous effect on all types of wildlife. Birds and tree lizards have lost their homes and many still appear dazed and confused. Yesterday I saw a large tree lizard on a tree stump that ended just above its head. One could imagine the confusion in its brain; it was on a tree but there was no tree except for the stump.

Our local zoo suffered major damage to its landscaping and buildings but the animals were not harmed. They had been locked in their night pens, most of which are made of concrete. The aviary was destroyed and many birds killed or lost. Already some animals have been moved to other locations and unofficial reports that the zoo will never reopen have been heard. It is expected new species of birds will become established in the wild as a result of birds escaping not only from the zoo but also from private aviaries.

Credit has to be given to our newspaper "The Miami Herald" and its delivery people. A street edition was

published Monday after the storm had subsided and in some areas home delivery resumed the next day. The often berated postal service resumed limited delivery within two days and they are to be praised for their fast recovery. By the end of the first week, delivery service in those areas not heavily damaged was almost back to normal.

For the most part, people pulled together and cooperated in a manner that benefited all. One of the problems encountered was the lack of functioning stop lights. Many people failed to recall Florida law requires that drivers coming to an intersection normally controlled by traffic lights must treat the intersection as a four way stop when the lights are not working.

The word "shade" has all but vanished from the vocabulary of people living in much of Dade County. In some areas only a few trees of any size remain and in others not a tree is left standing. It is surprising how fast nature attempts to recover from such damage. Those trees, shrubs and bushes that lost their leaves or were otherwise damaged are already sprouting new leaves and, in some instances, new branches.

We will recover. The cities of Homestead and Florida City along with smaller municipalities to the north of them will be rebuilt; perhaps slowly but they will arise from the "ashes." Electricity and telephone service will someday again be available in places where today not a pole stands. Trees will be replanted and wildlife will return to make them their home. The South Florida we knew on Sunday, August 23, 1992, is gone and it will be years before anything resembling it exists again. Someday traces of the storm will be hard to find and it will be nothing but a bitter memory.

-- Classified --

WANTED TO BUY: Rosepoint #3016 stems. Write price and description. **Nancy & Jim Finley**, 816 South Barrett, Sedalia, MO 65301. Phone: (816) 826-5032 or 827-0101.

Collecting Cambridge Ivy Balls, Flying Lady bowls, Perfume bottles. **Susan Davis**, 12840 Oakknoll Dr, Palm Beach Gardens, FL 33418. 407-622-3664.

FOR SALE: (6) Georgian tumblers, Crystal, 9 oz. ground bottoms - \$10 each ppd. **Steven Weinberg**, 73 Winding Wood Rd, Rye Brook, NY 10573.

RANDOM THOUGHTS FROM YOUR EDITOR

by Sue Rankin

As I sit down to begin preparation of my third issue as Editor of the Cambridge Crystal Ball, I must take a moment to thank Phyllis Smith for all of her hard work and dedication during her 15 years as Editor. I have known Phyllis since 1973, and knew how hard she worked and how conscientiously she always took her duties as Editor, but until I took over the job, I never really knew how much she did for us - the collectors of Cambridge Glass.

Phyllis, THANK YOU!!

Like Phyllis, I too need help. If you have questions, please drop me a note and we will include the answer in the Crystal Ball. If you have information, please share. If you have ideas for improvement, please let me know. And, of course, if you have wants or glass for sale, please send ads.

Now that the kids are back in school, they have probably written their first composition usually entitled "How I Spent My Summer Vacation". Herewith is mine:

HOW I SPENT MY SUMMER VACATION

Shortly after mailing the September issue of the Crystal Ball, Dave and I left for a 10 day vacation. We visited the St. Louis Science Center, Colorado National Monument, Arches National Park and Canyonlands National Park in Utah, Mesa Verde National Park, Four Corners, Chaco Canyon and the Cowboy Hall of Fame in Oklahoma City.

We feel that we pretty well covered the spectrum from the geology of pre-history to the astronauts, from the indians to the cowboys.

But, along the way, we stopped at flea markets, shops and antique malls. Some observations follow:

There is Cambridge glass out there; 24 pieces less now. Many reproductions, reissues and confusing items are encountered. Some dealers know what they have, others don't, especially the dealer selling a reissue which the dealer labeled "Chambridge".

Many dealers don't know what they have; therefore, much of the pricing is either very high or very low.

At every stop that included a book dealer, I looked for the NCC books, and didn't find one. WE STILL HAVE A LOT OF EDUCATION TO DO AND A LOT OF BOOKS TO SELL.

Antique Malls take all the fun out of bargaining.

In Memoriam

**Vivian Gragg
Ypsilanti, Michigan**

Word has been received that longtime member, Vivian Gragg, passed away January 11, 1992, in Boca Raton, Florida.

Our deepest sympathy is extended to her husband Howard, family and many friends.

**Mary Lucille Kolb
Maynard, Ohio**

Mary Lucille Kolb, mother of past-president Willard Kolb, passed away September 5, 1992, in Wheeling, West Virginia.

Our deepest sympathy is extended to Willard and his family.

**Gladys P. Meighen
Cambridge, Ohio**

Gladys P. Meighen, the oldest former employee of The Cambridge Glass Company, passed away August 26, 1992, in Zanesville, Ohio.

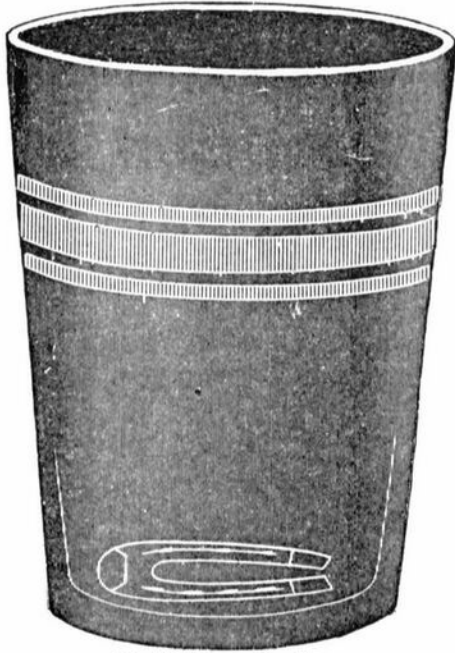
Our deepest sympathy is extended to her family and many friends.

1906 Catalog Pages

The following three pages are the continuation of reprinting of the 1906 Nearcut Catalog. They are pages 93 thru 95.

Common Tumblers.

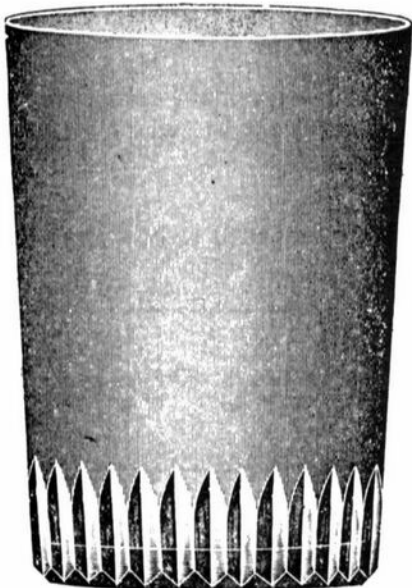
SCALE, FULL SIZE.



No. 185 9 ounce Tumbler.
Packed 23 dozen in a barrel.



No. 186 9 ounce Tumbler.
Packed 23 dozen in a barrel.



No. 187 8 ounce Tumbler.
Packed 21 dozen in a barrel.



No. 188 9 ounce Tumbler.
Packed 25 dozen in a barrel.

Table Tumblers.

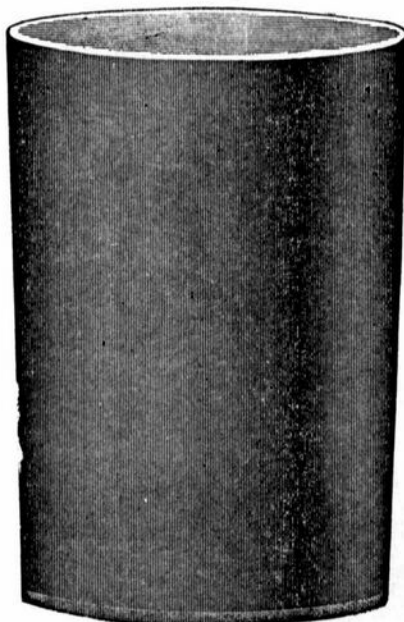
SCALE, FULL SIZE.



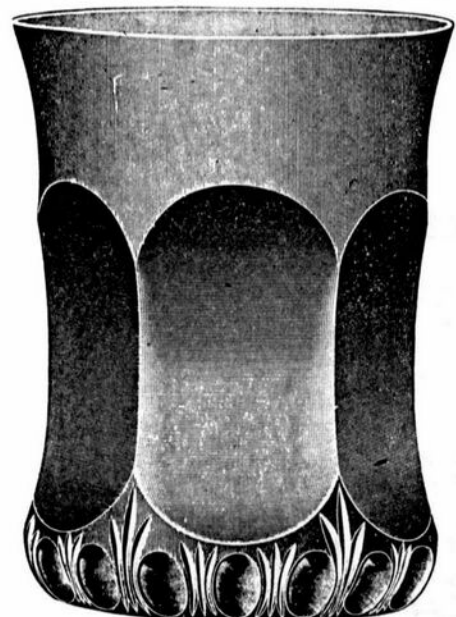
No. 62 8¼ ounce Tumbler, Band No. 3.
Packed 20 dozen in a barrel.



No. 65 9¼ ounce Tumbler, Band D.
Packed 18 dozen in a barrel.



No. 71 9 ounce Light Table Tumbler.
Packed 20 dozen in a barrel.



No. 75 8 ounce Old English Tumbler.
Packed 18 dozen in a barrel.

Table and Hotel Tumblers.

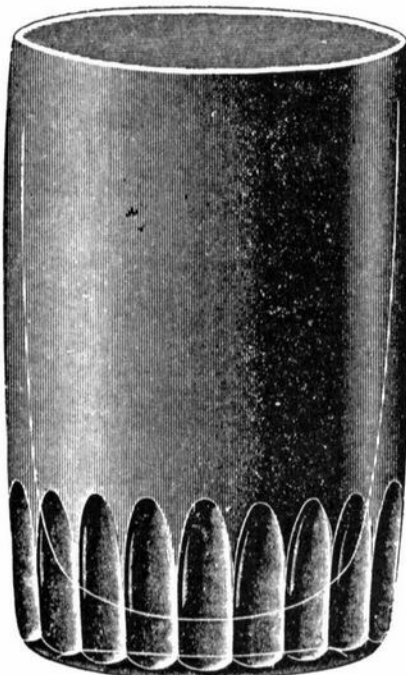
SCALE, FULL SIZE.



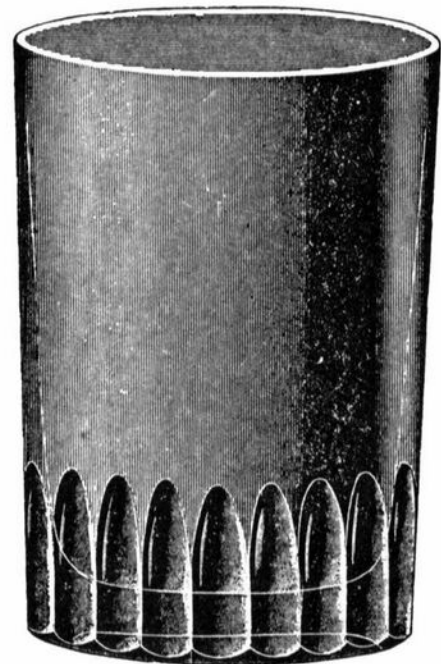
No. 73 8 ounce Tumbler.
Packed 17 dozen in a barrel.



No. 2628 8 ounce Tumbler.
Packed 17 dozen in a barrel.



No. 52 8 1/4 ounce Tumbler.
Packed 18 dozen in a barrel.



No. 53 8 1/4 ounce Tumbler.
Packed 18 dozen in a barrel.

SPECIAL AUCTION: JAS. YODER COLLECTION



This will be a separate mail-in auction of 146 American elegant and depression whiskey tumblers and shot glasses, conducted at the same time, and under the same general terms as the regularly scheduled SHOT GLASS EXCHANGE fall auction. The 146 lots consist of:

27 Cambridge (Caprice, etc.)
23 Duncan Miller (Cobalt Chanticleer, etc.)
33 Fostoria (June, etc.)
63 Imperial, Westmoreland, Fenton, New Martinsville, and misc. depression glass, incl. the extremely rare blue "Ships" or "Sailboat."

Bids will be accepted only from holders of bid books at \$3 each. Please send check to:

SHOT GLASS EXCHANGE
P.O. Box 219
Western Springs, IL 60558
708-246-1559 (Mon-Wed)

The
DAZE
Inc.

SPECIAL OFFER
to NCC friends
\$2.00 OFF
the 1 year subscription price
when on this form or copy of it.

The Original National monthly newspaper dedicated to the buying, selling and collecting of colored glassware and china including Depression Glass and the Elegant Glass (Cambridge, Heisey, Fostoria, etc.) We educate and inform you each month with feature articles by top notch columnists, readers "finds", club happenings, show news and a multitude of ads. Find those missing pieces to your 30s, 40s, or 50s pattern. Can't identify it? Perhaps we can help "keep up with what's happening" with a subscription to the DAZE. Buy, sell or trade from the convenience of your easy chair.

Name _____

Street _____

City _____

State _____ Zip _____

1 year \$19.00 2 years \$37.00 \$2.00 Single Copy

Exp. Date _____ Card No. _____

Signature _____

Orders to The Daze, Inc., Box 57, Otisville, MI 48463

Please allow 30 days for your first issue - Canadian Subscribers, add \$1.00 per year and subscribe by charge card only! This Special Offer may not be combined with any other special offer.
Offer Expires December 31, 1992



BOX 52572 • TULSA, OK 74152
918 744-5409

CAPRICE EXOTICS

MILK GL W90 3 OZ OIL ORIG STOP \$225
PINK CUPS(2)- NO SAUCERS \$ 38
8 1/2" BLUE ALPINE PLATE5 (7) \$ 39

SWANS (ALL ARE "3RD GENERATION"):

DEEP EMERALD GREEN 8 1/2" \$145
LIGHT GOLD 8 1/2" \$145
MILK GLASS 6 1/2" \$200

EVERGLADE #18 14" BLUE SWAN PLT \$175

FIGURAL FLOWER FROGS:

MOONL.BLUE 8 1/2" DRAPED LADY \$295
FROSTED AMBER 13" DRAPED LADY \$275
PEACHGLO 13" DRAPED LADY \$275
FRSTD CRYSTAL 8 1/2" 2 KIDS \$ 95

ELAINE GOLD ETCH 3500 STEM:

GOBLET(6); CHAMPAGNE(6) ALL \$275

ROSEPOINT ETCH 3121 STEM:

GOBLET(12) \$ 35
ICE TEA(12) \$ 33
CHAMP (12) \$ 31
FTD JUICE(5) \$ 33
#3400/90 6" 2 PART RELISH \$ 35

WANT FOR RESALE GOLD ROSEPOINT ETCH
3121 STEMWARE AND UNUSUAL SRVG PCS.
ROSEPOINT ETCH 3500 STEM PLS CALL.

APPLE BLOSSOM ETCH YELLOW:

8 1/2" PLATES 3400 (16) \$18
MOUNT VERNON FOOTED JUICES (3 EACH)
ROY. BLUE \$33
CARMEN \$26
CRY \$15
MT VERNON 12" #104 5 COMP RELISH \$39
REGENCY/ STRADIVARIUS STEMS
GOBLETS(12) \$23
ICE TEAS(5) \$23
CHAMPAGNE/ SHERBETS(24) \$19

MINT UNLESS NOTED/ UPS & INS. EXTRA

ISAACS ANTIQUES



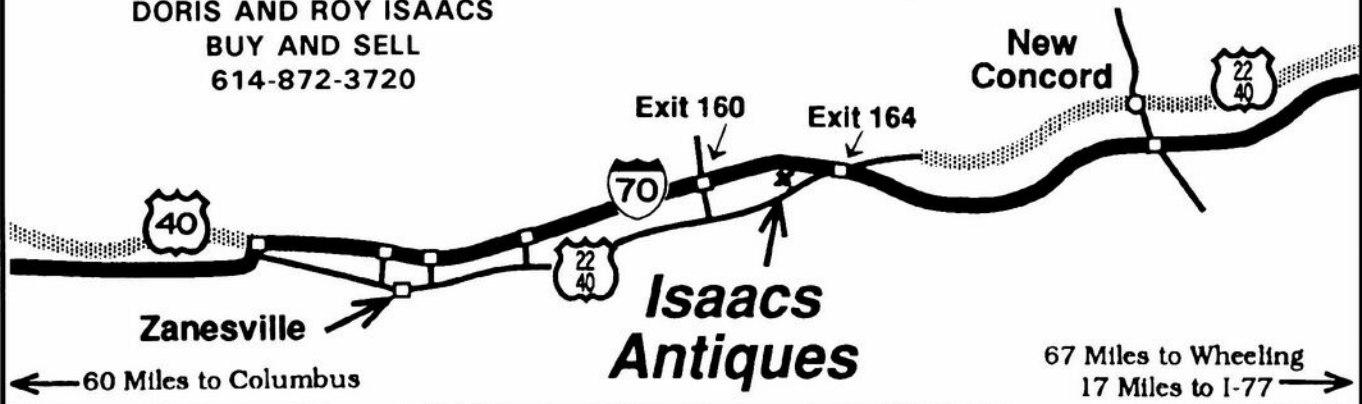
7525 East Pike
Norwich, Ohio 43767
614-872-3720

In East Pike Antique Complex - Rt. 40,
One Mile West of I-70 Norwich Exit #164

Hours 10 - 5:30 Mon. - Sat.
12 - 5:30 Sun.
Open Year Round

WE FEATURE GLASSWARE OF: CAMBRIDGE,
HEISEY, FENTON & FOSTORIA
Plus Art Pottery & a General Line of Antiques

DORIS AND ROY ISAACS
BUY AND SELL
614-872-3720



COLUMBUS ANTIQUE FLEA MARKET

11th
Year

(ANTIQUES AND COLLECTIBLES)

11th
Year

October 11th

Ohio State Fairgrounds - Lausche Building - Off I-71 Exit 17th Ave.

SUNDAY ONLY - 7 am-4 pm

Early buyers welcome 4 AM

1992 SCHEDULE 1992

NOVEMBER 8th * DECEMBER 13th

150 Quality Dealers

SELLING: Advertising, Art Deco, books, Cambridge, clocks, coins, collectibles, depression glass, dolls, Fiesta, fine early furniture, Heisey, jewelry, lamps, oak furn., postcards, pottery, good primitives, tools, toys.

Show admission \$1.50 * Children under 12 free

Heated/Air Conditioned * Concession



*"The Friendly
Family Business"*

4214 North High Street, Columbus, Ohio 43214
(614) 267-8163 (614) 263-6830 (614) 885-2352

DEALERS



DIRECTORY

NOTE: When writing to the Dealers listed here, please enclose a SASE!

<p>YOU CAN ADVERTISE YOUR ANTIQUE SHOP HERE!</p>	<p>BENICIA ANTIQUE SHOP 305 First Street Benicia, California 94510</p> <p>OPEN 11 AM - 5 PM Closed Monday</p> <p>Z. E. LOPES 707-745-0978</p> <p>VISIT HISTORIC BENICIA and its 28 shops Off Interstate 80 North of San Francisco</p>	<p>THE MUTED SWAN ANTIQUES 5486 Peachtree Rd. Chamblee, GA 30341 Heart of Chamblee Antique Row Specializing in Cambridge, Heisey and Fostoria</p> <p>Bill & Pat Miller 404-451-7620</p>
<p>MILBRA'S MATCHING SERVICE P.O. Box 363, Rio Vista, TX 76093 Milbra Long 817-645-6066 FOSTORIA * CAMBRIDGE * HEISEY DEPRESSION ERA GLASSWARE BUY AND SELL</p>	<p>ANTIQUES ON THE MALL SPECIALIZING IN CAMBRIDGE GLASS Stagecoach Mall - Bldg 3 - Norwich, OH Virginia Bennett 614-432-4483 64183 Warne Drive, Cambridge, OH 43725</p>	<p>ARMORY ANTIQUES 168 West Main Street Plain City, OH 43064</p> <p>QUALITY THINGS Heisey, China, Silver, Furniture Mon-Sat 10-5 VISA/MC 614-873-4890</p>
<p>THE GLASS URN 456 West Main Street, Suite G Mesa, AZ 85201 602-833-2702 Mail Order Shows Open Shop</p> <p>CAMBRIDGE, FOSTORIA, HEISEY, ETC.</p>	<p>D & D ANTIQUES Columbus, Ohio</p> <p>Dick Slifko SHOWS ONLY</p>	<p>GATEWAY ANTIQUE MALL JUST NW OF MINNEAPOLIS-ST PAUL, MN Intersection of I-94 & 101/NORTH (Look for our 75' High Sign) 7 Days/10-6 612-428-8286 ELAINE STORCK, PROPRIETOR</p>
<p>ETTELMAN'S DISCONTINUED CHINA & CRYSTAL Cambridge a Speciality P.O.Box 6491-CB Corpus Christi TX 78466 Phone 512-888-8391 Include S.A.S.E.</p>	<p>JUDY'S ANTIQUES Judy Bennett 422 S. Ninth Street (Corner of Jefferson) Cambridge, Ohio 43725 BUYING Ph.614-432-5855 SELLING CAMBRIDGE GLASS MY SPECIALTY</p>	<p>RONI SIONAKIDES 6565 W. Herbison Rd. DeWitt, MI 48820 517-669-5981 Fostoria, Tiffin, Duncan, Cambridge</p>
<p>THE GLASS CUPBOARD 39 Shire Oaks Drive Pittsford, New York 14534 Marcia Ellis Cambridge, Duncan Miller 716-586-7596 Shows, Mail Order, Appt.</p>	<p>GREEN ACRES FARM 2678 Hazelton Etna Rd., Pataskala, OH 43062 (State Route 310 North) Sat & Sun 1-7 PM 614-927-1882 Antiques, Crystal Glass and Collectibles</p>	<p>"HAPPINESS IS" Buddy and Kathy Stultz 3106 Warren Court, Glen Allen, VA 23060 804-672-8102 Specializing in American Made Glass We Buy & Sell, Shows & Mail Order</p>
<p>ELEGANT GLASSWARE Barbara Brock 26 Fayette St. Martinsville, VA 24112 804-724-6762 Cambridge - Heisey - Duncan - Fostoria</p>	<p>HERITAGE ANTIQUES 5485 Manchester Rd. (Rt. 93) Akron, Ohio 44319 Rosemary DePue Open Tues-Sat 12-5</p>	<p>CROW'S NEST ANTIQUES Constance Crow Buying & Selling Elegant Depression Era Glassware Austin Antique Mall 8822 McCann Austin, TX 78758 512-371-0244</p>
<p>YOU CAN ADVERTISE YOUR ANTIQUE SHOP HERE!</p>	<p>REMEMBRANCES 7597 Daphne Dr., No. Syracuse NY 13212 Shirley S. Ladouceur 315-458-5297 ANTIQUES and COLLECTIBLES MAIL ORDER SHOWS APPOINTMENTS</p>	<p>CRYSTAL LADY 1817 Vinton St., Omaha, NE 68108 Joann D. Hagerty Bus. 402-341-0643 Res. 402-391-6730 Specializing in Elegant Glass & Collectibles</p>
<p>GLASS RESTORATION BRILLIANT CRYSTAL ELEGANT DEPRESSION DON & LYNNE WORMLAND MT. CLEMENS, MICH 313-468-3519</p>	<p>WATKINS (Fine Quality) CAMBRIDGE GLASS SHOP 1429 Marquand Ave. (Corner of Woodlawn) Cambridge, OH 614-432-4460 Lana Watkins</p>	<p>MARGARET LANE ANTIQUES 2 E. Main St., New Concord, OH 43762 Lynn Welker 614-826-4418 Cambridge Glass Matching Service Hours Mon-Fri 1-5 PM or by Appointment</p>
<p>HELEN & JIM KENNON Heisey, Cambridge, Fostoria, Duncan, Imperial, Fenton, Tiffin P.O. Box 114, Brookville, OH 45309 PH: 513-833-5406 SHOWS ONLY</p>		

Quarterly Meeting

November 7, 1992

Theo's Coney Island Upstairs

632 Wheeling Avenue - - - Cambridge, Ohio

SOCIAL HOUR - Pay Bar.....6:00 P.M.

DINNER (sit down)7:00 P.M.

BUSINESS MEETING.....8:00 P.M.

PROGRAM (to follow meeting):
Speaker: Willard Kolb
Topic: "Imperial and Cambridge
and the What Ifs"

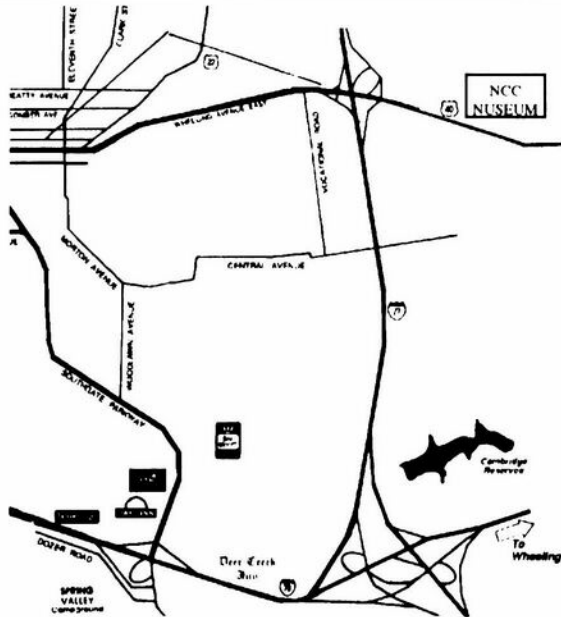
DINNER \$11.50 EA. Choice of the following:
Please indicate your choice(s)

Baked Chicken Breast..... _____

Roast Top Round of Beef..... _____

Names(s): _____ Total Reservations _____

Return this form or reproduction thereof to: NCC, Inc., PO Box 416, Cambridge, OH 43725.
Reservations must be received by October 25.



National Cambridge Collectors, Inc.
P.O. Box 416, Cambridge, Ohio 43725-0416

NON PROFIT
ORGANIZATION
U. S. POSTAGE
PAID
Dayton, OH
Permit #974

Please deliver promptly, dated material.

NCC Museum of Cambridge Glass

The museum is located on U.S. Route 40, one-eight mile east of I-77 near Cambridge. Hours: 10 a.m. to 4 p.m., Wednesday through Saturday; noon to 4 p.m., Sunday (March through October). Phone 614-432-4245.
Closed Mondays, Tuesdays, Easter and the 4th of July.

Membership Renewal Notice

This is your last issue of the *Crystal Ball*, if the date on your address label reads 10-92.
Please renew now!