



# Cambridge Crystal Ball

Published monthly by National Cambridge Collectors, Inc.  
to encourage and report the discovery of the elegant and boundless product of the  
Cambridge Glass Company of Cambridge, Ohio

Issue No. 245

September 1993

## President's Message

Greetings,

September is here. School is starting and the outdoor flea market rush is beginning to slow.

As you probably know by now, I have the honor of serving as President of NCC for another year.

The Board of Directors recently had a lengthy meeting to organize for the 1993-94 year. Committee appointments were made for the coming year. Please refer to page 2 of the CRYSTAL BALL for committee chairpersons.

This is your organization. What is your area of interest? Is there a committee you can serve on even if you are a distance away? Please drop me a note at the club address and make your wishes known.

We need some help with outside landscaping and yard work at the Museum. Information appears on page 8 about the Auction. Consignments and especially donations are welcomed and proceeds benefit the Museum.

Sue always welcomes any articles or letters you contribute for publication in the CRYSTAL BALL.

The Study Group Advisor will help you develop interest in and organize a study club in your area. Please refer to Judy Momirov's article on page 13.

I have listed a few of the ways you might help the

club. There are more. Mark your calendar and plan to attend the quarterly meetings. The November meeting will be Saturday evening, November 6. Further details appear on page 20.

Friday, March 4, 1994, is the date of the spring quarterly meeting. The program will be a preview of the Auction. The Auction will be held Saturday, March 5, 1994, at the Pritchard Laughlin Civic Center.

Last, but not least! Convention dates for 1994 are June 23, 24, 25 and 26. Make your plans. We miss you when you are not present.

### MARK YOUR CALENDAR!

NOVEMBER QUARTERLY MEETING  
SATURDAY, NOVEMBER 6, 1993

FEBRUARY QUARTERLY MEETING  
FRIDAY, MARCH 4, 1994  
AUCTION 94  
SATURDAY, MARCH 5, 1994

1994 CONVENTION  
JUNE 23, 24, 25, 26, 1994

## Cambridge Crystal Ball

Official Publication of National Cambridge Collectors, Inc. a non-profit corporation with tax exempt status. Published once a month for the benefit of its members. All rights reserved; reproduction in whole or in part without written permission of NCC and the author is prohibited. Membership is available for individual members at \$15 per year and additional members (12 years of age and residing in household) at \$3 each. \$12.00 of the \$15.00 annual dues is for a 1 year subscription to the Cambridge CRYSTAL BALL. All members have voting rights, but only one CRYSTAL BALL will be mailed per household. Foreign mailings subject to a postage surcharge. Back issues of the CRYSTAL BALL are available (beginning with Issue No. 1, May 1973) for members only. Cost: \$1.00 each or 12 issues for \$10.00.

### 1993-94 Officers & Committee Chairpersons

President	Joy R. McFadden
Vice-President	Mark A. Nye
Secretary	Richard Jones
Treasurer	David B. Rankin
Sergeant-at-Arms	Cynthia A. Arent
Acquisitions	Joe Andrejcek
Budget & Finance	David B. Rankin
By-Laws	Charles Upton
Membership	Jeff Ross
Museum Expansion/Relocation	
Museum--Facilities	Doyle Hanes
Museum--Interior	J. D. Hanes
Non-Glass Items	Judy Momirov, Tarzan Deel
Nominating	Mark A. Nye
Program	Willard Kolb
Project	Tarzan Deel
Publications	Mark A. Nye
Public Relations	Mark A. Nye
Publicity	Cynthia A. Arent
Study Group Advisor	Judy Momirov
1994 Auction	Lynn M. Welker
1994 Antique Show	Mary Beth Hackett
1994 Convention	Mark A. Nye
1994 Flea Market	Mike Arent
Crystal Ball Editor	Sue Rankin

### Classified Advertising Rates

10 cents per word \$2.00 Minimum  
We cannot mix type size in classified advertisements. Abbreviations and initials will count as words. Payment in full must accompany all ads.

### Display Advertising Rates

(Camera-ready ads preferred)	Members	Non-Members
1/8 page	\$6.00	\$10.00
1/4 page	10.00	15.00
1/2 page	18.00	25.00
3/4 page	25.00	35.00
Full page	33.00	45.00

### Dealers Directory

Six-line maximum \$18.00 for 12 months

Cambridge Crystal Ball assumes no responsibility for items advertised and will not be responsible for errors in price, description or other information.

Advertising copy, articles, club news and notices must be in our P.O. Box by the 5th of each month to assure publication in our next issue.

Paid advertisements containing reproductions or new glass will not knowingly be accepted for publication.

Opinions or information stated in any signed article or letter printed in the Crystal Ball are those of the authors and may or may not agree with National Cambridge Collectors, Inc. The Editor reserves the right to refuse and to edit any material submitted for publication to conform with the editorial style of the Crystal Ball.

### Please Address All Correspondence to:

National Cambridge Collectors, Inc.  
P.O. Box 416, Cambridge, Ohio 43725-0416  
President -- Joy R. McFadden 614/885-2726  
Secretary -- Richard Jones 914/631-1656  
Editor -- Sue Rankin 513/833-4626  
NCC Museum /J. D. Hanes -- 614/432-4245

Please notify us immediately of any change in your address.

Please enclose an SASE when requesting information.

# CAMBRIDGE GLASS BOOKS FOR SALE

By National Cambridge Collectors, Inc.

- **Colors in Cambridge Glass \***  
128 pages, 60 color plates, fully indexed  
Hardbound with price guide. . . . . \$19.95
- **1930-34 Cambridge Glass Company Catalog Reprint \***  
250-page reprint of original catalog  
Paperback with price guide. . . . . \$14.95
- **1949-53 Cambridge Glass Company Catalog Reprint \***  
300-page reprint of original catalog  
Paperback with price guide. . . . . \$14.95
- **1956-58 Cambridge Glass Company Catalog Reprint \***  
164-page reprint of original catalog  
Paperback. . . . . \$6.95

\* For NCC members only, the above publications are available at a 10 percent discount.

By Bill and Phyllis Smith

- **Cambridge Glass 1927-1929**  
66-page reprint of original catalog  
Paperback w/identification guide. . . . . \$7.95

By Cambridge Buffs Study Group

- **Nearcut**  
108-page reprint of 1910 Cambridge catalog  
Paperback with price guide. . . . . \$9.95
- **Price Guide**  
Updated price guide for Nearcut Catalog  
reprint (including postage). . . . . \$3.00

By Mark A. Nye

- **Cambridge Rose Point**  
94 pages, fully indexed  
Paperback with value guide. . . . . \$12.95
- **Value Guide**  
Updated value guide for Rose Point book  
(including postage). . . . . \$5.00

By Mary, Lyle and Lynn Welker

- **Cambridge Glass Company**  
120 pages of reprints from eight old catalogs  
Paperback. . . . . \$10.00
- **Cambridge, Ohio Glass in Color II**  
Spiralbound. . . . . \$5.95

By Harold and Judy Bennett

- **1903 Cambridge Glass Company Catalog Reprint**  
106-page reprint of an original catalog  
Paperback. . . . . \$7.50

### Address your orders to:

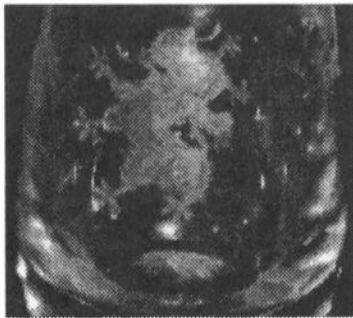
Books  
National Cambridge Collectors, Inc.  
P.O. Box 416  
Cambridge, OH 43725-0416  
Please add postage and handling to your order (first book, \$2.00; each additional book, 50 cents). Ohio residents add 6½ percent state sales tax.

Dealer discounts available - please write!

# The Regal Lion

by Dave Rankin

Many interesting items can be seen during the events at an NCC Convention; at the Show and Sale, the Show and Tell program, and during other programs. One such item appeared during the Former Workers' Reunion. One worker brought a #1528 vase in Mandarin Gold with an unusual etching. Being involved in the Miami Valley (Ohio) Study Group's etching book project, several of us studied the piece with much interest.



Etching on #1528 Vase



Etching from Etching Book Project

It had been suggested that this is the Lion etching. The Lion etching has not been seen in any catalog. The only reference seen so far was in a Cambridge price list dated October 1, 1956 on a #1528 vase. It seemed like a possible match but it did not look much like a lion. How did they come up with that name?

After careful examination of the grotesque little figure, it was suggested that it was a Griffin, not a Lion. Was this really the Lion etching? What is a Griffin? These questions remained unanswered until I got home from the Convention. Buoyed by a recent success on Mah-Jongg tiles, I reached for the Encyclopaedia Britannica.

Griffin (Griffon, Gryphon), a composite creature with lion body, winged or wingless, and bird (usually eagle) head.

Our little figure had no wings, no bird head. After excursions into articles on Greek art, Pre-Hellenic architecture, and jewelry, I gave up looking for a picture of a griffin that matched our etching sample.

An article on Heraldry finally ended the search. One sentence summed it up. "The regality which is sup-

posed to reside in the Leo of astrology, prominent in all ancient lore, must have been a powerful inducement to monarchs to assume the lion as a device." The article illustrated 14 color examples of royal arms in the first two pages, nine of them used the lion in one form or another. The arms of Philip I of Flanders, 1164, was the earliest example shown. What a remarkable similarity to the etching on the



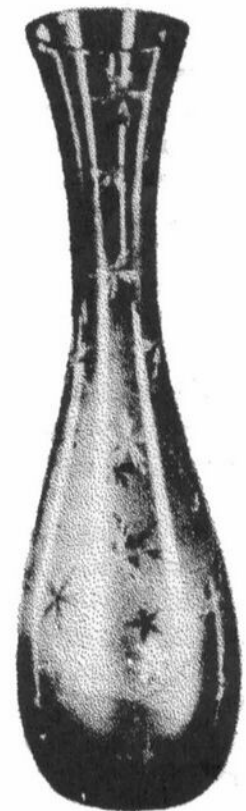
Arms of Norway



Lion,  
Rampant

#1528 vase. Five other arms also used the Lion in substantially the same shape. I can no longer doubt that this is the Lion etching.

This story is a long way from being complete. The 1956 price list also references two gold decorates, Star and Moon, and two other unidentified etchings. The etching book project is again seeking your assistance in identifying these two etchings. If you have an etching on the #1528 vase, other than those discussed here, please send a rubbing and/or picture to the Miami Valley Study Group, c/o Frank Wollenhaupt, PO Box 303, Dayton, OH 45401.



#1528 with  
D/Star



# SMOKERS ITEMS

by Mark A. Nye

Tobacco has played an important role in the history and the economy of this country and the world since early explorers found the native population using it. During the hundreds of years since its discovery, controversy has surrounded its use and this controversy continues today. The purpose of these articles is not to discuss the pros and cons of tobacco. Its use by smoking became very popular during the first half of the twentieth century. Consequently, many glass companies, including Cambridge, cashed in on the habit by making and selling a wide range of ash trays and cigarette holders. In addition, Cambridge also made items for other tobacco users, items such as tobacco jars.

The Community or No. 2800 line, from the Nearcut era, contained a tobacco jar and cover. The handles of this jar also served as pipe holders. One piece in the No. 2630 or Plymouth line is a covered jar Cambridge described as "Cigar or Tobacco Jar Fitted with Patented Sponge for Moistener." On a catalog page captioned "Near Cut Novelties and Kitchen Utensils," and dating to circa 1916, is seen the 2641 Cigar Band, Ash or Stamp Tray in five different sizes and the 0141 Ash Tray. From the same Cambridge catalog comes a page that featured an additional four tobacco or cigar jars. Another item from the same period is the 071 Cigarette Box and Cover. The cover, as seen in the catalog illustration, apparently served as an ashtray as well.

While primarily made in Crystal, at least three of the above mentioned items will also be found in Ebony. These three are the Community Line tobacco jar, the 071 cigarette box and the 0141 ash tray. The later two can also be found in other opaque colors such as Jade and Azurite.

Cambridge Catalog #10, dating to about 1920, contained illustrations of four tobacco jars, numbers 2748, 2746, 2630 and 2745, previously pictured in the circa 1916 catalog. Six ash trays, numbers 27, 28, 29, 30, 31, and 32, were shown with the No. 1917 Plain Ware Line as was the 107 Cigarette Box and Cover, a new number for the old 071 Cigarette Box and Cover.

One complete page from the 34 page 1927 Cambridge catalog showed nothing but smokers items.

On this page are four cigarette boxes, two tobacco jars, both round and square trays for cigar bands, ash wells or receivers, cigarette holders and more. On a 1929 supplemental catalog page is illustrated what appears to be an Ebony 1025 Cigar Humidor etched 718 Imperial Hunt Scene and probably gold encrusted. Pictured next to it is the 882 Tobacco Humidor, also in Ebony, etched Golf Scene and gold encrusted, or so it appears. Also, on this page is the Community Line 127 Tobacco Jar and Cover with its pipe holder handles.

The 1930 Cambridge catalog also devoted a page to "Smokers Articles." The illustration located in the center on the left-hand side is deceiving. What you are looking at is a top view of four nested ash trays, numbers 387, 388, 390 and 391. The designs on the 607 Cigarette Box, the 883 Ash Tray and the 605 Cigarette Box are cut into the surface of the glass. The 883 Ash Tray and its companion 885 Cigarette Holder were previously shown on a supplemental page to the 1927 catalog, probably issued in the fall of 1927.

A 1931 supplemental catalog page captioned "Business Stimulators" had on it pictures of the 1025 Cigar Humidor, the 882 Tobacco Humidor and the 607 Cigarette Box and Cover. Unlike their appearance on the 1930 catalog page, this time all three are in Ebony. On another 1931 catalog page one finds the 1230 Cigarette Box and Ash Tray, first seen in the fall of 1927. Shown then in Crystal, and probably color as well, here it is seen in Ebony.

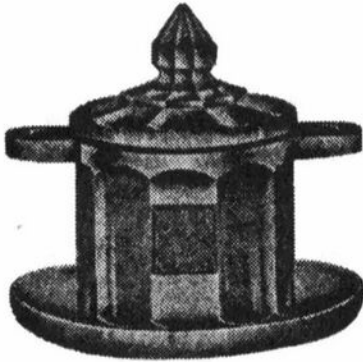
Still another 1931 catalog page was used for smokers articles. This one pictured nothing but Ebony items decorated in silver. These are not silver encrusted etchings, they are transfer designs and will be found in colored enamels as well as silver. Production of silver decorated Ebony smokers items stopped before 1940.

On this page one can get a better view of the 388, 391 and 390 ash trays mentioned earlier. The 1940 catalog included a 386 Ash Tray of the same design but half an inch larger than 387. Because of its size, it did not nest with the other four.

To be continued

CIGAR OR TOBACCO JARS

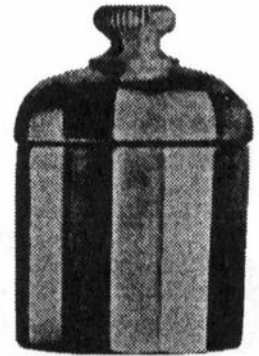
TRADE  
"Nearcut"  
MARK



2800/127 Tobacco Jar and Cover.



No. 0244  
For metal Cover.



No. 2630  
Ground on Stopper.



No. 2745  
Ground in Stopper.

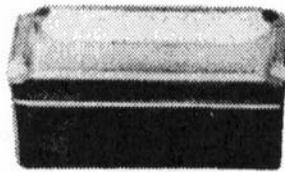


No. 2746  
Ground in Stopper.



No. 2748  
Ground in Stopper.

CIGARETTE BOX AND ASH TRAYS



071. Cigarette Box and Cover.



Special Article No. 113  
Ash Tray with  
Cigarette Snuffer.



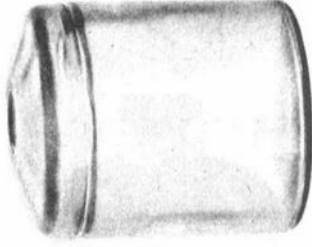
0141  
Ash Tray.



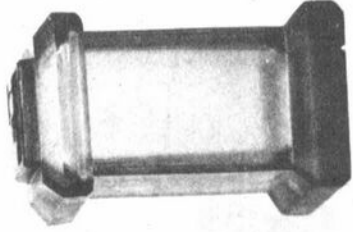
Special Article No. 114  
Ash Tray.



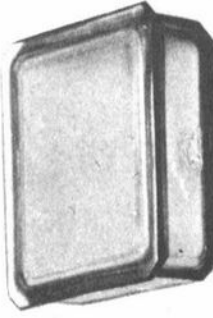
0134  
Ash Tray.



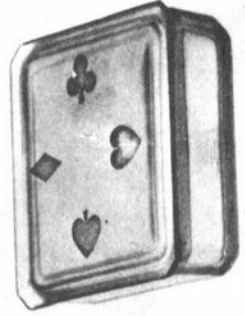
617 Cigarette Jar



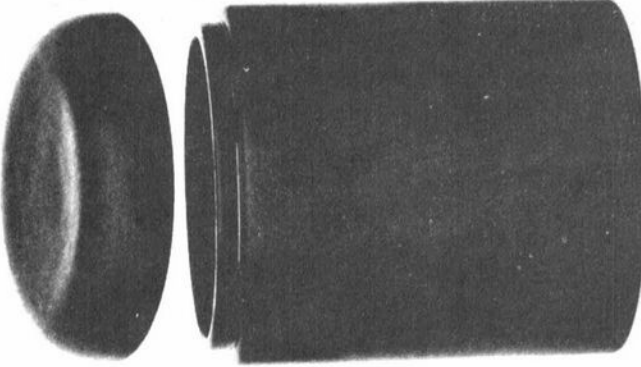
885 Cigarette Jar  
Ash Tray Cover



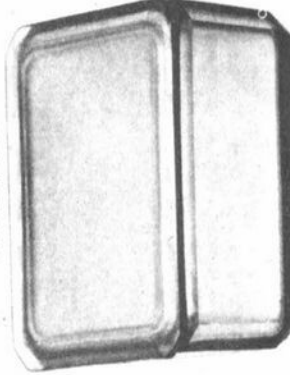
615 Cigarette Box



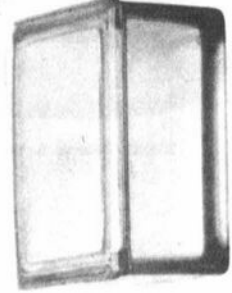
605 Cigarette Box



1025 Cigar Humidor  
Ash Tray Cover



616 Cigarette Box



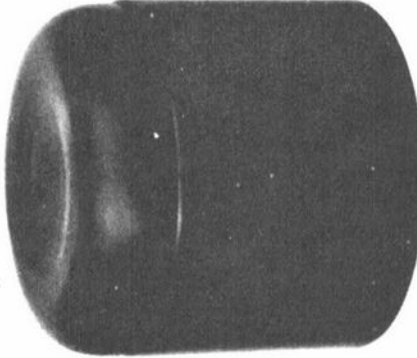
430 Cigarette Box



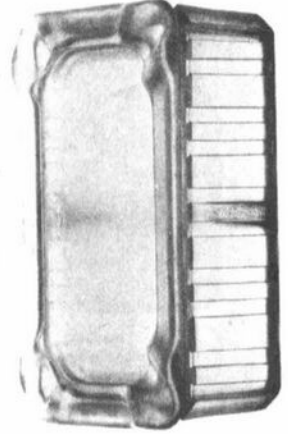
Moistener for Humidor



130 Ind. Ash Tray



882 Tobacco Humidor  
Ash Tray Cover



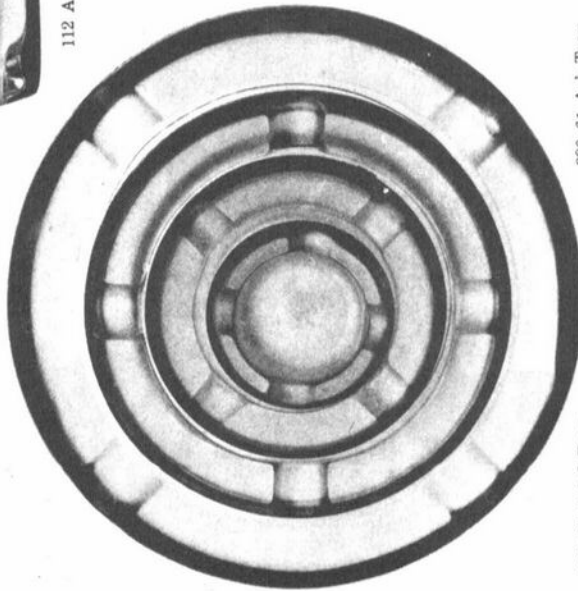
1208 Cigarette Box  
2 Compartment



117 Ash Tray "Oval"



112 Ash Tray



390-6" Ash Tray  
391-8" " "

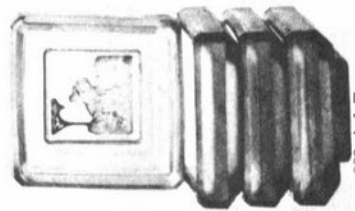


607 Cigarette Box



212 Match Holder

387-2½" Ash Tray  
388-4" " "



883 Ash Tray  
Use in sets with 885 Jar



# MUSEUM MOMENTS

by J. D. Hanes

Where has the summer gone? By the time you read this, school will have started again. Of course, the best part of fall is that football season begins.

Now, let us go on to more important things. As the old saying goes "no good deed goes unpunished." I have a few corrections to make to last month's article. The #1042 Gold Krystol Swan, which is irridized and was donated by Kelvin and Sharon Moore, was given by them in memory of Jane Kersey. I am sorry Kel and Sharon! Again, being in a hurry, I simply overlooked what I had written down!

Also, I said that we hoped to have all of the "thank you" letters for donations made at Convention to you by the end of July. I am going to have to amend that to the end of August, as the computer printer had other ideas. It must not have liked all of the work I was having it do, so it committed suicide. It is an older printer and it is going to take a while to get it fixed. However, Mike Arent was kind enough to lend us a printer from his company to use for a while. Thanks a lot Mike!

Apparently in sympathy with the printer, the next day, the hot water tank decided to start leaking and quit working. So, we had another unexpected expense. I feel sorry for Dave Rankin, our Treasurer and Budget and Finance Committee Chairman. I am sure that this is really fouling up the projected figures for the year.

A big THANK YOU goes to Marybelle Moorehead and Cindy Arent. These two ladies became my volunteer "Administrative Assistants" after Convention. There was much paperwork to be done, and my office looked like a war zone. Marybelle and Cindy both gave many hours assisting visitors; stuffing, sealing and stamping envelopes; and doing other tasks as needed. Thanks again Marybelle and Cindy!

We received some donations during July and the beginning of August that I want to tell you about. We had a cash donation from Willard Kolb and one from Pam Earussi in honor of W. T. Dawson and Clarke West, who helped Pam pack after the closing of the Antique Show at Convention. Bob and Marcia Ellis donated two magazine ads from the late 1940s, highlighting the Cascade line. Mike Arent donated a W82 Marmalade and Cover in Milk Glass. And finally, on a sad note, the Cambridge Buffs Study Group has decided to disband. They donated the

money in their treasury and their inventory of Nearcut Books and Price guides to the Museum. I want to thank all these people for their continued support of the Museum.

In last month's article, I mentioned a "fun item" that raised \$1200.00 for the Museum, and promised to explain more about it. For those of you who are new members of the organization, our mini-auctions are always fun events that raise money for the Museum. In the past we have had large sums of money raised on such items as a bag of Oreo™ cookies; an empty Pepsi™ can; and other empty "beverage" bottles. Saturday night, our "Twenty Dollar Tulsa" bidder asked for another item to be auctioned. Thoughts were running to an empty bottle of some sort. Caroline Pierson of the Pritchard Laughlin Civic Center gave us a large empty wine bottle. The bidding started slow, then gained momentum. When the smoke had cleared, 12 different bidders had formed a consortium each paying \$100.00 for the bottle. It was decided to have all of the bidders sign a sheet of paper to be placed in the bottle that will be auctioned again next year, and hopefully raise more money. The bottle was entrusted to Mary Martha Mitchell of Cambridge. Again, for those who are new members, Mary Martha was a long time employee of the Cambridge Glass Company and was its last President. I think that we need to come up with a name for this bottle. If anyone has an idea, write to me at the club post office box.

July was a very good month for visitors to the Museum. Many visitors had used the AAA book for Ohio to learn about us. Others had called the 1-800-BUCKEYE tourism number to get the OhioPass Book that we advertise in.

In closing, let me extend another thank you, to Shirley Beynon, Marybelle Moorehead, Jeff Ross and Lynn Welker. This is the time of year when new committee chairpersons are appointed by the President. I do not know if I will be appointed Museum Interior Committee Chairman again. [Ed. Note: J. D. has been reappointed.] These four, hard working, people comprised the rest of the Museum Interior Committee during the past year. I have been blessed to have these fine people to work with. When any of you have given me compliments on the Museum, it is due in large part to the work of these four people. I just want to let them know how much I appreciate all of their hard work and dedication to making our Museum as great as it is.

Until next month, happy Cambridge hunting!



# ***AUCTION 94*** ***March 5, 1994***

## **Consignments & Donations Needed**

**by Lynn Welker, Auction Chairman**

If you have never participated in our Annual Auction, perhaps this is the year for you to do so.

Consignment lists will be accepted September 1, 1993, through October 1, 1993. **DO NOT SEND THE GLASS**, please send lists only at this time.

Forward lists to:

**LYNN WELKER  
2 EAST MAIN STREET  
NEW CONCORD, OH 43762**

Your list will be reviewed by the Auction Committee. Accepted items will be noted and the list returned to you before November 1, 1993. All glass must be received by the committee by December 1, 1993. You may bring your glass to the November Quarterly Meeting. The consignment fee will be 20% as in previous years.

You can also make an outright donation of a piece or pieces of Cambridge glass or related paper material. When the item is auctioned, 100% of the price realized goes to the Museum Fund. Our Auctioneer doesn't even include these items in his fee. Of course, your donation is 100% tax deductible by you.

Proceeds from the commission charged benefit the Museum Fund.

The Auction will be held Saturday, March 5, 1994, at the Pritchard Laughlin Civic Center in Cambridge, Ohio. This is a new location for the Auction, but is the site of the 1992 and 1993 Conventions. Even if you cannot consign or donate glass, please plan now to attend as a buyer.

Thank you for your support.

If you have any questions, please call Lynn Welker at (614)826-7414 or J. D. Hanes at (614)432-6794.

---

---

## ***WE GET LETTERS***

---

---

Dear Sue:

Thanks for the clarification re: P. 569. I did see the "toes" as "projections" but did not realize the vase base was ground flat, which would indeed create the "star footprint." I am sure I haven't "seen" the P. 569 because I wasn't looking for the correct item!!

I found the Bridge Hound in my book. Thanks. I am constantly going to my books; just had not noticed that little fellow.

I bought a Bitters Bottle, at Augusta, Kansas last time we went to Wichita. The Bitters Bottle had a Cambridge label. In researching its identity (a no. 1217 4 oz) I did not see the Bridge Hound on the same page as the 1121 Bitters Bottle! One track mind at the time, I guess.

You note that Guernsey Glass is reproducing or re-issuing the Bridge hound. I always wonder who is remaking what from the old molds of Cambridge, Fostoria, Heisey and now Imperial and Westmoreland. Will we ever have a comprehensive list?

Vivian Dorsett  
Oklahoma

---

Dear Vivian:

Your letter vividly reminds me of my own experiences. After more than 20 years of collecting Cambridge glass, I still see things in the catalogs that I swear I have never seen before.

I can't speak for the other glass companies, but we are working on a listing of Cambridge Reproductions and Reissues. By the time the listing is complete, it will probably need to be updated. Once we have the initial list, we are hoping that all of our members will help us keep it current by notifying us of any new items that should be included.

Thank you for your letter, and keep learning about Cambridge glass.

Sue



# Pressed Soda and Weiss Beer Tumblers.

SCALE, FULL SIZE.



No. 495 11 1/2 ounce Bell Tumbler.  
Packed 12 dozen in a barrel.



No. 496 8 ounce Bell Tumbler.  
Packed 17 dozen in a barrel.



No. 434 13 ounce Tumbler.  
Packed 11 dozen in a barrel.

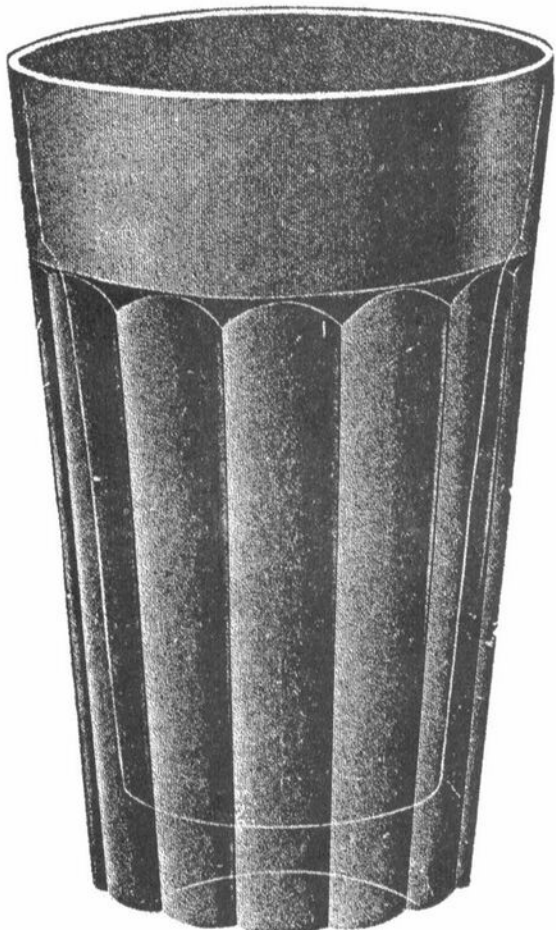


No. 431 9 ounce Tumbler.  
Packed 13 dozen in a barrel.

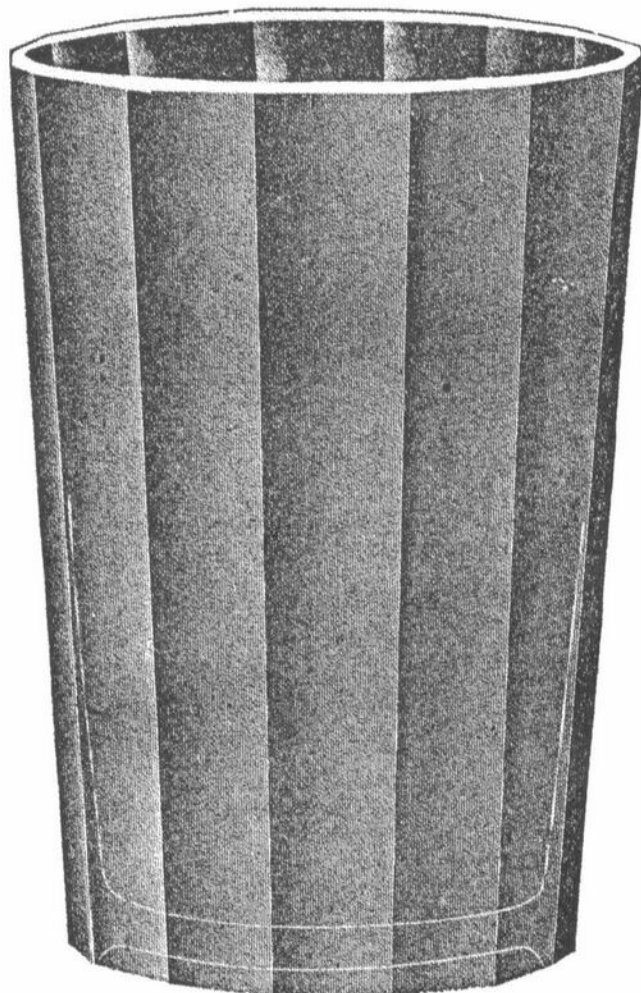
# Pressed Soda and Weiss Beer Tumblers.

121

SCALE FULL SIZE



No. 433 14 ounce Tumbler  
Packed 8 dozen in a barrel.



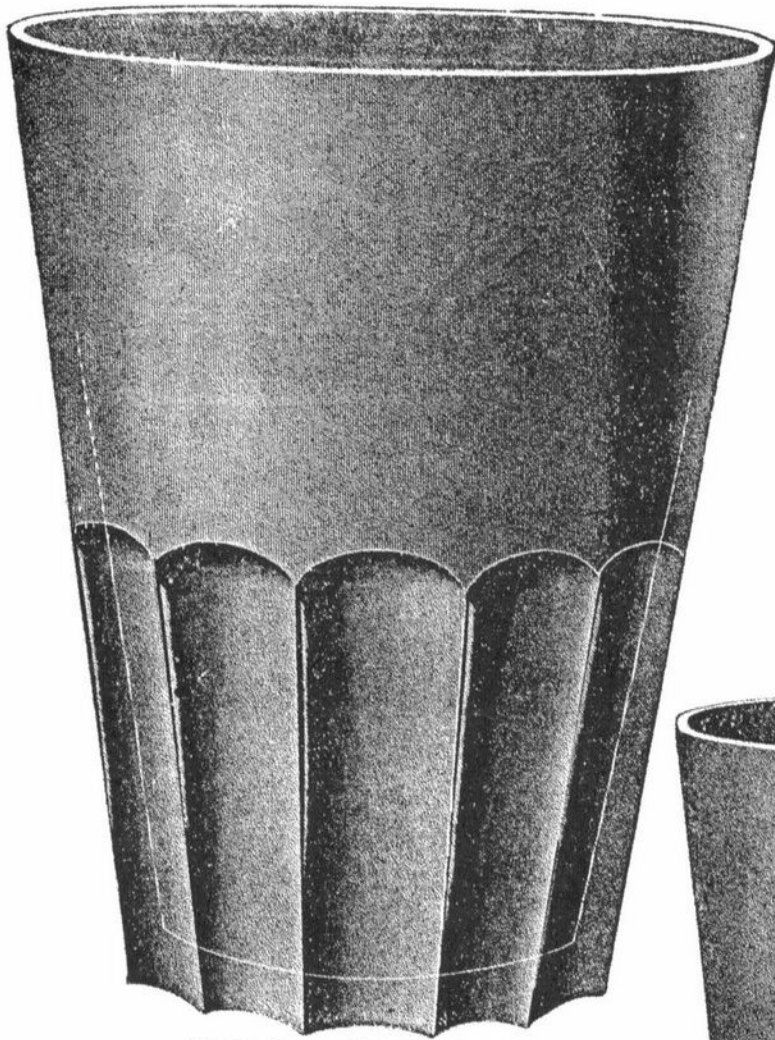
No. 435 26 ounce Tumbler.  
Packed 6 $\frac{1}{4}$  dozen in a barrel.



No. 432 11 ounce 6-Flute Soda Tumbler.  
Packed 10 $\frac{1}{4}$  dozen in a barrel.

# Pressed Soda and Weiss Beer Tumblers.

SCALE, FULL SIZE.



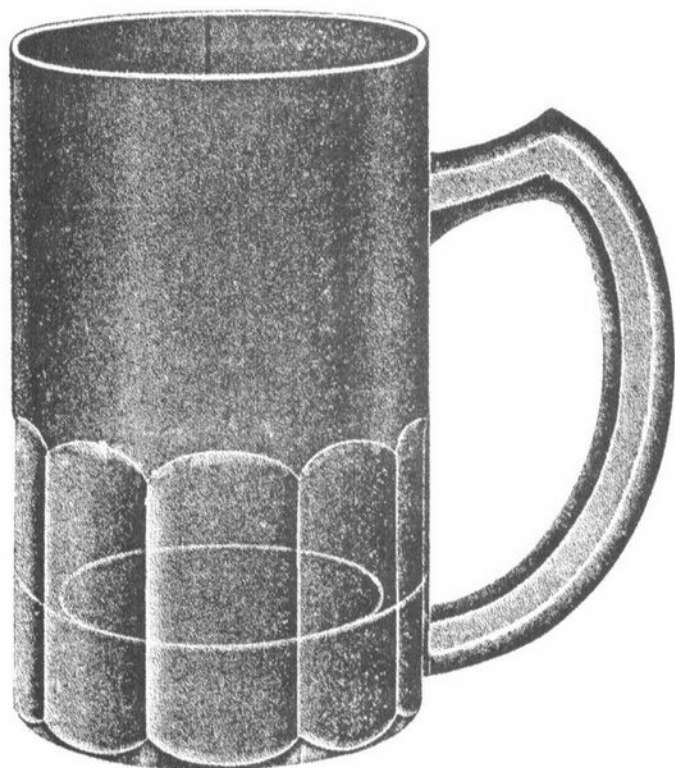
No. 573 34 ounce Weiss Beer Tumbler.  
Also made Sham.  
Capacity, 28 ounce.  
Packed 5 dozen in a barrel.



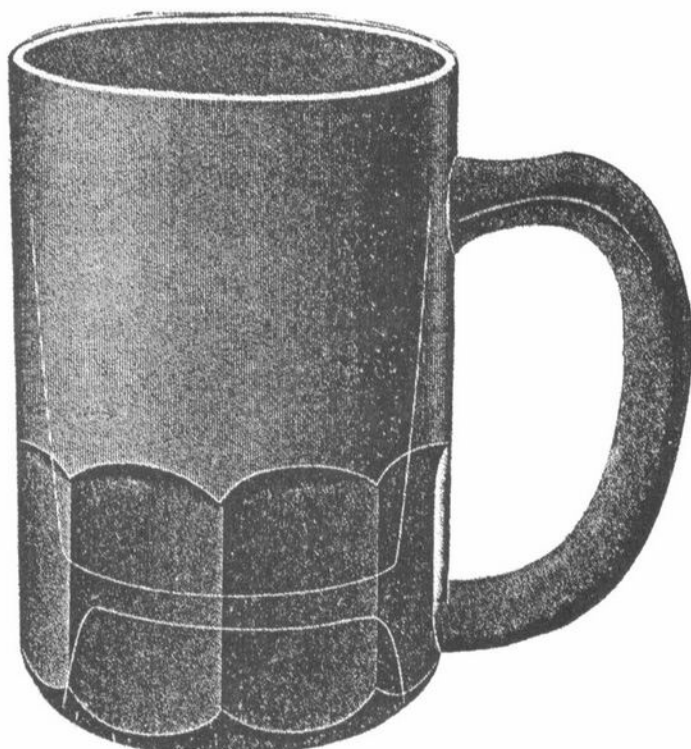
No. 576 Weiss Beer Tumbler.  
Capacity, 24 ounce.  
Packed 6 dozen in a barrel.

# St. Louis Beer Mugs.

SCALE, FULL SIZE.



No. 593 8 ounce Beer Mug.  
Packed 14 dozen in a barrel.



No. 606 8 ounce Beer Mug.  
Packed 14 dozen in a barrel.



No. 607 10 ounce Beer Mug.  
Packed 11 dozen in a barrel.



No. 605 5 ounce Beer Mug.  
Packed 21 dozen in a barrel.



---

---

# Study Club News

---

---

At this year's Convention, several members from the Columbus, Ohio area expressed an interest in joining a study club if one is formed in that area. NCC policy does not allow me to give out names, numbers or addresses of members to others due to the "right to privacy." Therefore, it is difficult to match people up to start new groups. People are often reluctant to be listed in the CRYSTAL BALL as a contact person because they feel that they will be responsible for handling all the details involved in starting a study group (actually, there aren't that many, and it isn't that difficult).

Joy McFadden, our President, has offered to help in organizing a Columbus group. She is willing to help those of you who are interested meet to get started. If you are interested in joining this group, please write to me in care of NCC or give me a call at (614)432-2896.

Study groups are an important extension of the national organization. We would love to see more clubs started throughout the country. The Elegant Glass Collectors, our East Coast study group, is a good example of people overcoming distance problems to create a successful study group. Pam Earussi reported on their creative meeting scheduling at the Convention. Another relatively new group, The Cambridge Collectors of North Texas, has also been meeting successfully this year. I'm sure there are many members throughout the country who would enjoy the chance to meet with other Cambridge collectors and learn more about Cambridge glass. If you would like to have a study group in your area, drop me a line or give me a call at the phone number listed above.

Judy Momirov, Chairperson  
Study Group Advisory Committee

---

## **Study Group #11 - Chicago Area "Cambridge Nudes"**

Saturday, June 26, 1993, the convention attendees of the Nudes had an informal meeting in Room 133 of the Best Western in Cambridge, Ohio. It was a festive occasion where we imbibed White Chardonnay served in plastic glasses and goldfish crackers served

in a recent purchase of a Royal Blue #1402 Tally-Ho 14 1/4 inch pan bowl. There were 11 members present.

The Convention events, Antique Show, Flea Market and banquet were discussed. Views were shared and everyone admitted to near exhaustion due to the hectic pace and the race to find that "rare" Cambridge treasure.

Show-and-tell was held and the following is a partial list of the items displayed on a mauve floral bedspread that served the purpose beautifully: #3011 3 oz cocktail with Crown Tuscan stem and Royal Blue bowl; #3011 saucer champagne with Royal Blue bowl; #234 Community brush vase in Primrose; #81 12" vase in Helio with nouveau Sterling Silver overlay and an Ivory paste mold vase with enamel flowers. Mary Scharf and Mary Sue Lyon exhibited a matching collection of Fostoria cordials they purchased while shopping together.

Our next meeting will take place at the home of Jim and Rose Curnutt on August 12. We cordially invite potential new members to attend. For directions call (708)246-3394.

Submitted by  
Rose Curnutt

---

## **Study Group #16 - Mid-Atlantic "Elegant Glass Collectors"**

The Elegant Glass Collectors met at the Deer Creek Inn in Cambridge, Ohio Wednesday, June 23 before the start of the NCC Convention. Five members and three guests were present.

A show-and-tell of recent purchases was held. On display were a Carmen swan, a Windsor Blue shell footed tall vase and some items that were later identified by Lynn Welker at the Saturday afternoon Bring-and-Brag session.

We discussed the activities our club would take part in, and a suggestion for a fund raising activity was presented.

A good time was had by all. We also want to say how much we enjoyed the Convention, the Antique Show and the Flea Market.

Our next meeting will be held at Renninger's in

Adamstown, PA Sunday, September 6. We will meet at the coffee stand at 7:00 a.m. and at noon at the refreshment stand at Shupp's Grove. We would be delighted for others to join us. If you have any questions or need directions call Pam Earussi at (215)855-5423.

Submitted by  
Pam Earussi

---

Editor's Note: The following article was sent to us by NCC member Elva Brodnick. Classic Glass Collectors of NE Ohio is a Depression Glass Club and not a study group affiliated with NCC.

Virginia Houston is a long-time member of NCC holding membership #433. She has always been generous with her knowledge, and her enthusiasm for Cambridge Glass is contagious. Over the years she has contributed much to both NCC and the CRYSTAL BALL.

## Classic Glass Collectors of NE Ohio - Eastlake, OH

It took several months of planning--and everyone keeping the secret--but we did it! Our June 15 meeting was a surprise "Thank You" party for one of our Club's founding members, (and our own special "Glass Lady") Virginia Houston. She started so many of us collecting glass, and helped so many of us along the way.

This took some doing, as you can imagine, if you know Virginia! We'd been thinking about "doing something for Virginia," when we realized that June was the Club's 12th Anniversary and would be a perfect time to surprise her.

And surprise her we did! Virginia's first love is Cambridge Glass. What better way to make sure she came to the meeting than to announce she'd "be doing our June program on Cambridge Arms"? That Tuesday evening, club members arrived early to help set everything up. Jerry & Effie Goodnight brought along more than half a dozen of their Cambridge Swans, Frank Brodnick brought his Cambridge Marjorie punch bowl (which Kirk & Jackie Glauser filled with their famous "Glass Party Punch," a local glass club tradition), and yes, we even had Cambridge Arms set up, including Virginia's Willow Blue set. We'd also asked everyone to bring their

favorite stemware, with which to toast Virginia. Everything looked wonderful. Imagine our surprise, then, when someone happened to look out the window, and spotted Virginia arriving--15 minutes early. Thank goodness we'd all gotten there early ourselves; when Virginia came in, we all shouted "'Surprise!" -- and we had!

What a wonderful party! The Club presented Virginia with a beautiful stained-glass panel showing the Cambridge "Triangle C," especially designed & made for her by our own Marc McCamey. In addition, she was given a lovely Cambridge Azurite 10" Flower Bowl, with gold decoration, and a "Thank You" card signed by everyone there. Toasts were offered by Jerry Goodnight, Carl Wehn, and Morris Becker (and didn't all that elegant glass look lovely, as we saluted Virginia?) Virginia thanked us all, and cut the cake, while everyone seemed to have a "Virginia Story" to share, not to mention the stories Virginia herself told.

Thanks to everyone in the Club, this was a great way to say:

"Thanks, Virginia!"

<b>The</b> <b>DAZE</b> <b>Inc.</b>	<b>SPECIAL OFFER</b> to NCC friends <b>\$2.00 OFF</b> the 1 year subscription price when on this form or copy of it.
The Original National monthly newspaper dedicated to the buying, selling and collecting of colored glassware and china including Depression Glass and the Elegant Glass (Cambridge, Heisey, Fostoria, etc.) We educate and inform you each month with feature articles by top notch columnists, readers "finds", club happenings, show news and a multitude of ads. Find those missing pieces to your 30s, 40s, or 50s pattern. Can't identify it? Perhaps we can help "keep up with what's happening" with a subscription to the DAZE. Buy, sell or trade from the convenience of your easy chair.	
Name _____	
Street _____	
City _____	
State _____	Zip _____
<b>1 year \$21.00 2 years \$41.00 \$2.00 Single Copy</b>	
Exp. Date _____	Card No. _____
Signature _____	
<b>Orders to The Daze, Inc., Box 57, Otisville, MI 48463</b>	
<small>Please allow 30 days for your first issue. Canadian Subscribers, add \$1.00 per year and subscribe by charge card only! This Special Offer may not be combined with any other special offer. Offer Expires December 31, 1993</small>	

## INVENTORY CLEARANCE SALE

Cup Plates - Crystal, Cobalt, Amethyst or Teal	4.00
Scotty Dog Book Ends - Ebony Frosted, marked '1979 NCC':	
Firsts	15.00
Seconds	5.00
Eagle Book Ends - Cobalt Blue	30.00
NCC Convention Favors:	
1979 Amber Paperweight	5.00
1980 Windsor Paperweight	5.00
1981 Tomato Paperweight	5.00
1982 Gold Paperweight	5.00
1983 Blue Georgian Tumbler	5.00
1984 Amber Georgian Tumbler	5.00
1985 Pink Georgian Tumbler	5.00
1986 Gold Georgian Tumbler	5.00
1987 Light Blue Nearcut Martha Punch Cup	5.00
1988 Cobalt Cambridge Square Cigarette Holder	8.00
1989 Teal Mt. Vernon Cordial	8.00
1990 Pink Mt. Vernon Cordial	8.00
1991 Cobalt Mt. Vernon Cordial	8.00
1992 Ebony Mt. Vernon Cordial	8.00
1993 Light Green Caprice Ash Tray	7.00

**Postage & Insurance Extra**  
Ohio Residents Add 6½% Sales Tax

**National Cambridge Collectors, Inc.**  
**PO Box 416**  
**Cambridge, OH 43725-0416**

## Help!

The NCC Museum Committee needs volunteers to help clean up the flower beds around the Museum. The beds have not been adequately maintained and thistles and other weeds have invaded. The beds need to be cleaned up and reworked into low maintenance landscaping.

If you are willing to help with this project or have particular ideas on low maintenance landscaping, please contact Doyle Hanes, chairman of the Museum Facilities Committee. Phone: 614-432-6794.

## NCC EDUCATIONAL PROGRAMS

### FOR RENT and FOR SALE

National Cambridge Collectors, Inc., has several educational programs available for rent. These programs are in one of two formats: 35mm slides or 8½" x 11" transparencies (for use with an overhead projector). All come with a written narrative and all, except the Caprice program, have a cassette recording of the narrative available.

---

FOR RENT ONLY - The programs currently available are as follows:

<u>TOPIC</u>	<u>FORMAT</u>
Cambridge Etchings	Slides
Cambridge Colors	Slides
Cambridge Stemware	Slides
Caprice	Slides
Cambridge History 1901-1954	Transparencies
Cambridge - The Reopen Years	Transparencies
Cambridge Arms	Transparencies
Cambridge in the 1940s	Transparencies
Cambridge Engravings	Transparencies

Each of these is suitable for use as a program at any type of Club meeting where a program on Cambridge Glass is desired. The average length of these programs, when using the pre-recorded narrative, is approximately 30 minutes.

The fee for renting each of these programs is \$15.

\$25 Deposit REQUIRED for each.  
\$10 will be refunded when the program is returned to NCC.

---

### FOR SALE- VCR Movie "The Crystal Lady"

Includes pictures of factory and workers  
made from old 16mm film - 40 minutes.  
\$15 each - plus \$2 P&I

---

Inquiries regarding the rental & purchase of these programs should be sent to:

**NCC, Inc. Program Rentals**  
**PO Box 416**  
**Cambridge, OH 43725-0416**

# ROBERT W. RILEY

PO Box 4180

Springfield, MA 01101

8-12 PM EDT (413) 739-3669 P & I Extra

<b>Clear</b>		Wetherford Dianthus Pink tall covered candy w/line etch	45
Arcadia Everglades candy box & cover	60		
1115 13" Bashful Charlotte	110		
Mt. Vernon #66 cigarette holder w/ash tray foot on 1066 stem	30	<b>Nearcut</b>	
1009 Everglades 6" vase	40	2695 Deep oval orange bowl	45
Mt. Vernon #27 3 oz wines (7)	ea 6	2500 6" square bowl	25
1136 9" Heron flower frog	65	2636 Spoon holder	22
Caprice #38 creamer & sugar	25	Emerald Colonial toy creamer & spooner	ea 30
1108 Mandolin lady, bent at waist	110	Ferland toy butter & cover	20
<b>Decorated/Etched</b>		<b>Colors</b>	
1381 28 oz decanter w/gold bands decor., octagonal stopper	30	1327 Ebony 1 oz cordial/favor vase	30
Pristine #575 9" cornucopia, w/ruffled edge etch Blossomtime	75	1330 Amethyst 5" sweet potato vase	35
439 7½" candlesticks, painted orange enamel	30	Heirloom #48 Carmen 8 oz footed tumbler (6)	ea 12
3 pc. console set, etch Lily of the Valley and frosted (993 bowl and 628 candlesticks)	80	119 7" wide Forest Green 12" high basket	80
7966 Talisman Rose 1 oz cordials (4)	set 160	441 Dianthus Pink 10" comport	25
7966 Talisman Rose 9 oz goblets (7)	set 140	1299 12" Amber vase w/clear foot	30
7966 Talisman Rose 4 oz clarets (5)	set 100	1325 Forest Green 30 oz decanter w/prism stopper	30
3075 Peach-Blo 12 oz footed tumblers, etch Hunt Scene (6)	ea 25	1506/1 Crown Tuscan 4" novelty basket, signed	50
		2560 Opal Hatchet w/painted flowers	55
		W81 Milk Mt. Vernon salt, signed	20
		Stradivari Regency 1 oz cordials (4) (Mocha, Moonlight, Pistachio, LaRosa)	set 160

## Classified

**WANTED TO BUY:** Rose Point #3106 stems. Write price and description. **Nancy & Jim Finley**, 711 West Broadway, Sedalia, MO 65301. Phone: (816) 826-5032 or 827-0101.

**PLEASE HELP ME:** Looking for Plain Crystal lids and spoons to fit #157 ftd. marmalade jar and two #147 marmalade jars. Write and include price to: **Virginia Sullivan**, 183 Chestnut Neck Road, Port Republic, NJ 08241.



# COLUMBUS ANTIQUE FLEA MARKET

12th  
Year

(ANTIQUES AND COLLECTIBLES)

12th  
Year

## September 5th

Ohio State Fairgrounds - Lausche Building - Off I-71 Exit 17th Ave.

SUNDAY ONLY - 7 am-4 pm

Early buyers welcome 4 AM

### 1993 SCHEDULE 1993

OCTOBER 10th \* NOVEMBER 14th \* DECEMBER 12th

150 Quality Dealers

SELLING: Advertising, Art Deco, books, Cambridge, clocks, coins, collectibles, depression glass, dolls, Fiesta, fine early furniture, Heisey, jewelry, lamps, oak furn., postcards, pottery, good primitives, tools, toys.

Show admission \$1.50 \* Children under 12 free

Heated/Air Conditioned \* Concession



*"The Friendly  
Family Business"*

4214 North High Street, Columbus, Ohio 43214  
(614) 267-8163 (614) 263-6830 (614) 885-2352



**National Cambridge Collectors, Inc.**  
P. O. Box 416,  
CAMBRIDGE, OHIO 43725-0416

*A nonprofit organization dedicated to the preservation and study of Cambridge Glass*

You Are Cordially Invited  
To Become A Member of

NATIONAL CAMBRIDGE COLLECTORS, INC.

Benefits derived from membership include: receipt of our club publication, The Cambridge CRYSTAL BALL; informative Quarterly Meetings; Antique shows; Auctions; other special events; and unlimited admission to the museum.

The Cambridge CRYSTAL BALL is published the first of each month. This newsletter contains educational and interesting articles, questions and answers, information on reproductions and reissues, notices of all club functions, classified advertisements, dealers directory, and many other features of interest to collectors of Cambridge Glass.

Yearly dues are \$15.00 for individual Members and \$3.00 for each Associate Member. \$12.00 of the \$15.00 annual dues is for a subscription to the Cambridge CRYSTAL BALL for 1 year. All members have voting rights, but only one issue of the CRYSTAL BALL will be mailed per household.

Name (please print) \_\_\_\_\_ \$15.00

Mailing Address \_\_\_\_\_

City \_\_\_\_\_ State \_\_\_\_\_ Zip + 4 \_\_\_\_\_

Associate Members: (Must be at least 12 years of age and living in the same household.)

1. Name \_\_\_\_\_

2. Name \_\_\_\_\_

3. Name \_\_\_\_\_

Total number of Associate Members \_\_\_\_\_ @ \$3.00 each ..... \$ \_\_\_\_\_

TOTAL AMOUNT ENCLOSED: \$ \_\_\_\_\_

Please make check payable to: NATIONAL CAMBRIDGE COLLECTORS, INC.

Recommended by \_\_\_\_\_

# ISAACS ANTIQUES



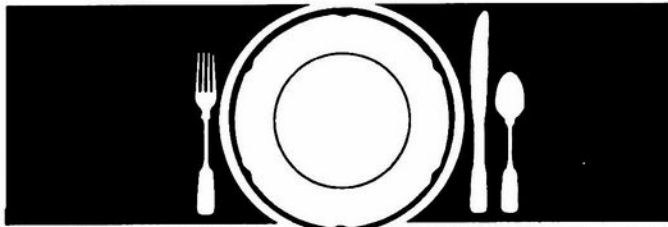
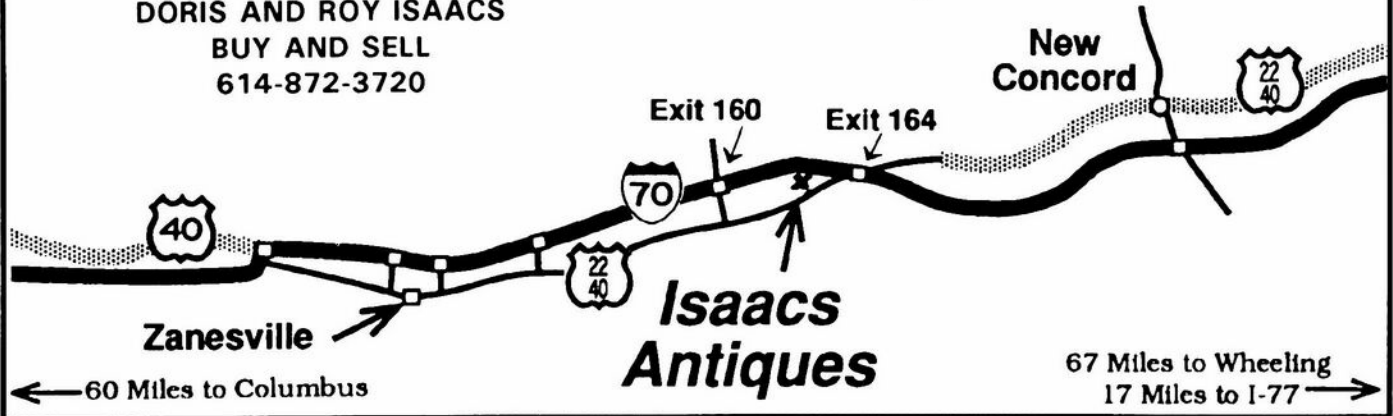
WE FEATURE GLASSWARE OF: CAMBRIDGE,  
HEISEY, FENTON & FOSTORIA  
Plus Art Pottery & a General Line of Antiques

**DORIS AND ROY ISAACS**  
BUY AND SELL  
614-872-3720

**7525 East Pike**  
**Norwich, Ohio 43767**  
**614-872-3720**

In East Pike Antique Complex - Rt. 40,  
One Mile West of I-70 Norwich Exit #164

**Hours 10 - 5:30 Mon. - Sat.**  
**12 - 5:30 Sun.**  
**Open Year Round**



## How to Find Those Missing Pieces.

The world's largest source of discontinued china, crystal and flatware. Replacements, Ltd., buys and sells over 45,000 different patterns.

If you need a piece, or several pieces to add to your collection ... or if you'd like to sell some unneeded extras ... call or write us. We can provide you with a complete printout of available pieces in your pattern. Or we'll let you know our prices for the pieces you wish to sell.

Replacements, Ltd. — a 100,000 square foot facility; 1.5 million pieces; over 500,000 satisfied customers. Contact us, or come see our showroom. Let us help you complete your collection ... or maybe you'll help add to ours.

## REPLACEMENTS, LTD.

Call 1-800-562-4462. Or write:  
1089 Knox Road • P. O. Box 28029 • Dept. CB  
Greensboro, NC 27420

**OVER 7000 CAMBRIDGE PIECES**

## WE CLEAN CLOUDY GLASS!

**\*\* SATISFACTION GUARANTEED \*\***

YES, IT IS TRUE THAT WE REALLY CAN RESTORE THE INTERIOR OF YOUR CRUET, VASE, DECANTER AND MOST OTHER INTERNALLY ETCHED ITEMS BACK TO NEAR ORIGINAL CONDITION!

WE DO NOT OIL, WAX OR COVER UP THE SICKNESS IN ANY WAY! WE ACTUALLY REMOVE IT.

NO ITEMS ARE TOO SICK TO CLEAN! IF WE CANNOT CLEAN YOUR ITEM TO MEET YOUR SATISFACTION, THE CLEANING IS FREE!

WE ARE SO CONFIDENT IN OUR SERVICE THAT WE ASK THAT YOU SEND NO MONEY. WHEN WE RETURN YOUR ITEM A BILL WILL BE ENCLOSED FOR THE POSTAGE & CLEANING. IF YOU ARE HAPPY, PLEASE SEND PAYMENT; IF NOT, RETURN THE BILL MARKED "NOT SATISFIED".

PLEASE ALLOW 6-8 WEEKS FOR REDELIVERY OF MOST ITEMS. ALL GLASS IS HANDLED AND CLEANED AT YOUR RISK. SOME VERY CLOUDY ITEMS MAY TAKE SEVERAL ADDITIONAL WEEKS.

CRUET	\$20.00	COCKTAIL SHAKER	\$30.00
COLOGNE	\$20.00	SALT SHAKER (SINGLE)	\$15.00
WATER BOTTLE	\$30.00	SALT SHAKER (PAIR)	\$25.00
DECANTER	\$30.00	CRUSHED FRUIT JAR	\$30.00
VASES (UNDER 12 IN.)	\$25.00	LAVENDER JAR	\$20-30.00

ALL OTHERS WRITE FOR QUOTE

SHIP TO: CARLISLE & ASSOCIATES  
28220 LAMONG ROAD, DEPT. C  
SHERIDAN IN 46069  
(317) 758-5767 AFTER 6:00 P.M.

# DEALERS



# DIRECTORY

NOTE: When writing to the Dealers listed here, please enclose a SASE!

<p><b>DAUGHERTY'S ANTIQUES</b>  <b>Jerry and Shirley</b>                      Antiques and Collectibles * Mostly Glass                      Shows &amp; Mail Orders 2515 Cheshire No.                      402-423-7426 Evenings Lincoln NE 68512</p>	<p><b>BENICIA ANTIQUE SHOP</b>                      305 First Street                      Benicia, California 94510  <b>OPEN 11 AM - 5 PM</b>                      Closed Monday                      Z. E. LOPES 707-745-0978</p>	<p><b>THE MUTED SWAN ANTIQUES</b>                      5486 Peachtree Rd. Chamblee, GA 30341                      Heart of Chamblee Antique Row                      Specializing in                      Cambridge, Heisey and Fostoria                      Bill &amp; Pat Miller 404-451-7620</p>
<p><b>MILBRA'S CRYSTAL MATCHING</b>                      P.O. Box 363, Rio Vista, TX 76093                      Milbra Long 817-645-6066                      FOSTORIA * CAMBRIDGE * HEISEY                      TIFFIN, LENOX, OTHERS  <b>BUY AND SELL</b></p>	<p><b>VISIT HISTORIC BENICIA</b>                      and its 28 shops                      Off Interstate 80 North of San Francisco</p>	<p><b>ARMORY ANTIQUES</b>                      168 West Main Street                      Plain City, OH 43064  <b>QUALITY THINGS</b>                      Cambridge, Heisey, China, Silver, Furniture                      Mon-Sat 10-5 VISA/MC 614-873-4890</p>
<p><b>THE GLASS URN</b>                      456 West Main Street, Suite G                      Mesa, AZ 85201 602-833-2702                      Mail Order Shows Open Shop                      CAMBRIDGE, FOSTORIA, HEISEY, ETC.</p>	<p><b>ANTIQUES ON THE MALL</b>  <b>SPECIALIZING IN CAMBRIDGE GLASS</b>                      Bogart's - Bldg #3 - Norwich, OH                      Virginia Bennett 614-432-4483                      64183 Warne Drive, Cambridge, OH 43725</p>	<p><b>GATEWAY ANTIQUE MALL, INC.</b>                      JUST NW OF MINNEAPOLIS-ST PAUL, MN                      NE Corner Intersection of I-94/101, Rogers, MN                      (Look for our High Sign)                      50 Dealers 7 Days, 10-6 612-428-8286                      ELAINE STORCK, DIRECTOR</p>
<p><b>ETTELMAN'S DISCONTINUED                      CHINA &amp; CRYSTAL</b>                      Cambridge a Speciality                      P.O.Box 6491-CB Corpus Christi TX 78466                      Phone 512-888-8391 Include S.A.S.E.</p>	<p><b>D &amp; D ANTIQUES</b>                      Columbus, Ohio                      Dick Slifko SHOWS ONLY</p>	<p><b>RONI SIONAKIDES</b>                      6565 W. Herbison Rd. DeWitt, MI 48820                      517-669-5981                      Fostoria, Tiffin, Duncan, Cambridge</p>
<p><b>THE GLASS CUPBOARD</b>                      P. O. Box 652                      West End, North Carolina 27376                      Marcia Ellis Cambridge, Duncan, Heisey                      919-673-2884 Shows, Mail Order</p>	<p><b>JUDY'S ANTIQUES</b>                      Judy Bennett                      422 S. Ninth Street (Corner of Jefferson)                      Cambridge, Ohio 43725                      BUYING Ph.614-432-5855 SELLING  <b>CAMBRIDGE GLASS MY SPECIALTY</b></p>	<p><b>"HAPPINESS IS"</b>                      Buddy and Kathy Stultz                      3106 Warren Court, Glen Allen, VA 23060                      804-672-8102                      Specializing in American Made Glass                      We Buy &amp; Sell, Shows &amp; Mail Order</p>
<p><b>ELEGANT GLASSWARE</b>                      Barbara &amp; Cindy Brock                      Rt. 1, Box 66AC, Callands, VA 24530                      804-724-6762                      Cambridge - Heisey - Duncan - Fostoria</p>	<p><b>GREEN ACRES FARM</b>                      2678 Hazelton Etna Rd., Pataskala, OH 43062                      (State Route 310 North)                      Sat &amp; Sun 1-7 PM 614-927-1882                      Antiques, Crystal Glass and Collectibles</p>	<p><b>CROW'S NEST ANTIQUES</b>                      Constance Crow Buying &amp; Selling                      Elegant Depression Era Glassware                      Austin Antique Mall 8822 McCann                      Austin, TX 78758 512-371-0244</p>
<p><b>YOU CAN ADVERTISE YOUR                      ANTIQUE SHOP HERE!</b></p>	<p><b>YOU CAN ADVERTISE YOUR                      ANTIQUE SHOP HERE!</b></p>	<p><b>CRYSTAL LADY</b>                      1817 Vinton St., Omaha, NE 68108                      Joann D. Hagerty                      Bus. 402-341-0643 Res. 402-391-6730                      Specializing in Elegant Glass &amp; Collectibles</p>
<p><b>YOU CAN ADVERTISE YOUR                      ANTIQUE SHOP HERE!</b></p>	<p><b>REMEMBRANCES</b>                      7597 Daphne Dr., No. Syracuse NY 13212                      Shirley S. Ladouceur 315-458-5297                      ANTIQUES and COLLECTIBLES                      MAIL ORDER SHOWS APPOINTMENTS</p>	<p><b>MARGARET LANE ANTIQUES</b>                      2 E. Main St., New Concord, OH 43762                      Lynn Welker 614-826-7414                      Cambridge Glass Matching Service                      Hours Mon-Fri 10-12AM, 1-5PM or by Appointment</p>
<p><b>GLASS RESTORATION</b>                      BRILLIANT DON &amp; LYNNE                      CRYSTAL WORMLAND                      ELEGANT MT. CLEMENS, MICH                      DEPRESSION 313-468-3519</p>	<p><b>WATKINS</b>                      (Fine Quality)  <b>CAMBRIDGE GLASS SHOP</b>                      1429 Marquand Ave. (Corner of Woodlawn)                      Cambridge, OH 614-432-4460 Lana Watkins</p>	<p><b>HELEN &amp; JIM KENNON</b>                      Heisey, Cambridge, Fostoria, Duncan,                      Imperial, Fenton, Tiffin                      P.O. Box 114, Brookville, OH 45309                      PH: 513-833-5406 SHOWS ONLY</p>

# Quarterly Meeting

November 6, 1993

Theo's Coney Island Upstairs

632 Wheeling Avenue - - - Cambridge, Ohio

SOCIAL HOUR - Pay Bar.....6:00 P.M.

DINNER (sit down) .....7:00 P.M.

BUSINESS MEETING.....8:00 P.M.

PROGRAM (to follow meeting):  
Speaker: To Be Announced  
Topic: To Be Announced

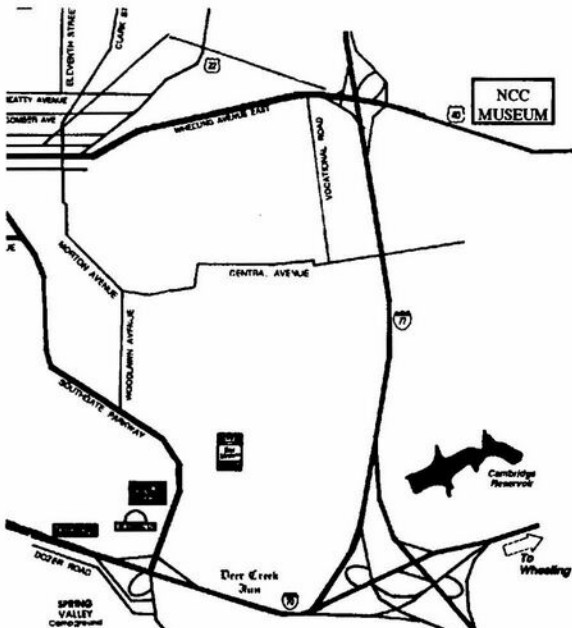
DINNER \$11.50 EA. Choice of the following:  
Please indicate your choice(s)

Baked Chicken Breast..... \_\_\_\_\_

Roast Top Round of Beef..... \_\_\_\_\_

Name(s): \_\_\_\_\_ Total Reservations \_\_\_\_\_

Return this form or reproduction thereof to: NCC, Inc., PO Box 416, Cambridge, OH 43725.  
Reservations must be received by October 23.



## NCC Museum of Cambridge Glass

The museum is located on U.S. Route 40, one-eight mile east of I-77 near Cambridge. Hours: 10 a.m. to 4 p.m., Wednesday through Saturday; noon to 4 p.m., Sunday (March through October). Phone 614-432-4245. Closed Mondays, Tuesdays, Easter and the 4th of July.

## Membership Renewal Notice

This is your last issue of the *Crystal Ball*, if the date on your address label reads 9/93.

*Please renew now!*

National Cambridge Collectors, Inc.  
P.O. Box 416, Cambridge, Ohio 43725-0416

NON PROFIT  
ORGANIZATION  
U. S. POSTAGE  
PAID

Dayton, OH  
Permit #974

FORWARDING AND RETURN  
POSTAGE GUARANTEED

PLEASE DELIVER PROMPTLY, DATED MATERIAL.