



# Cambridge Crystal Ball

Published monthly by National Cambridge Collector  
to encourage and report the discovery of the elegant and boundless product  
of the Cambridge Glass Company of Cambridge, Ohio

Issue No. 252

April 1994

## 1994 AUCTION REPORT

by Cindy Arent

It's a yearly ritual without end. In it's 21st year, the Annual Auction grows more spectacular each year. When you enter the room and see over five hundred pieces of beautifully displayed Cambridge Glass, you get a feeling that is hard to describe.

The first time that I saw a large display of Cambridge Glass was when I was four years old. My mother and I had stopped by the Cambridge Glass Company sample room to visit my Aunt Betty. Most people usually do not remember much from that early age, however, the Cambridge showroom left a vivid image in my mind. This year's display of auction glass at the Pritchard Laughlin Civic Center again left me with the same feeling of awe.



Lynn Welker, his auction committee, and many helpers, deserve congratulations for a job well done. Auctioneer Craig Connelly and his staff also deserve credit for running a smooth and entertaining auction. It takes much planning and effort to make the NCC auction a success year after year.

This year's auction attendance was 188, with bidders attending from as far away as Missouri, Kansas, Flor-

ida, New York, New Jersey, Virginia, Michigan and Minnesota. Of course, our mail bidders stretched from coast to coast.

As usual, the 1994 auction contained an excellent representation of the expansive line of glassware produced by the Cambridge Glass Company. All lots in the auction were sold to the highest bidder, with fierce competition occurring for some of the more unusual items.

Prices ranged from a high of \$1,550 for an Amethyst Japonica Urn Vase, to a mere \$2 for a Milk Glass Martha Washington Sugar. Other interesting items included a 3400 line 28 piece luncheon set in Ebony and Crystal etched

Appleblossom - \$450, a 3011 Heatherbloom Nude Brandy - \$200, a single Crystal Caprice Reflector Candlestick - \$200, a Moonlight Blue 10 inch Star Bowl - \$210, and a Crystal Apple Candy Box and Cover etched Blossomtime - \$475. (For complete auction results see page 4.)

Continued on page 3

## Cambridge CRYSTAL BALL

Official Publication of National Cambridge Collectors, Inc. a non-profit corporation with tax exempt status. Published once a month for the benefit of its members. All rights reserved; reproduction in whole or in part without written permission of NCC and the author is prohibited. Membership is available for individual members at \$17 per year and additional members (12 years of age and residing in household) at \$3 each. \$12.00 of the \$17.00 annual dues is for a 1 year subscription to the Cambridge CRYSTAL BALL. All members have voting rights, but only one CRYSTAL BALL will be mailed per household. Foreign mailings subject to a postage surcharge. Back issues of the CRYSTAL BALL are available (beginning with Issue No. 1, May 1973) for members only. Cost: \$1.00 each or 12 issues for \$10.00.

### 1993-94 Officers & Committee Chairpersons

President	Joy R. McFadden
Vice-President	Mark A. Nye
Secretary	Richard Jones
Treasurer	David B. Rankin
Sergeant-at-Arms	Cynthia A. Arent
Acquisitions	Joe Andrejcek
Budget & Finance	David B. Rankin
By-Laws	Charles Upton
Membership	Jeff Ross
Museum Expansion/Relocation	Willard Kolb, J. D. Hanes
Museum--Facilities	Doyle Hanes
Museum--Interior	J. D. Hanes
Non-Glass Items	Judy Momirov, Tarzan Deel
Nominating	Mark A. Nye
Program	Willard Kolb
Project	Tarzan Deel
Publications	Mark A. Nye
Public Relations	Mark A. Nye
Publicity	Cynthia A. Arent
Study Group Advisor	Judy Momirov
1994 Auction	Lynn M. Welker
1994 Antique Show	Mary Beth Hackett
1994 Convention	Mark A. Nye
1994 Flea Market	Mike Arent
CRYSTAL BALL Editor	Sue Rankin

### Classified Advertising Rates

10 cents per word \$2.00 Minimum  
We cannot mix type size in classified advertisements. Abbreviations and initials will count as words. Payment in full must accompany all ads.

### Display Advertising Rates

(Camera-ready ads preferred)	Members	Non-Members
1/8 page	\$10.00	\$15.00
1/4 page	15.00	25.00
1/2 page	25.00	35.00
3/4 page	35.00	50.00
Full page	45.00	60.00

### Dealers Directory

Six-line maximum \$24.00 for 12 months

Cambridge CRYSTAL BALL assumes no responsibility for items advertised and will not be responsible for errors in price, description or other information.

Advertising copy, articles, club news and notices must be in our P.O.Box by the 5th of each month to assure publication in our next issue.

Paid advertisements containing reproductions or new glass will not knowingly be accepted for publication.

Opinions or information stated in any signed article or letter printed in the CRYSTAL BALL are those of the authors and may or may not agree with National Cambridge Collectors, Inc. The Editor reserves the right to refuse and to edit any material submitted for publication to conform with the editorial style of the CRYSTAL BALL.

### Please Address All Correspondence to:

National Cambridge Collectors, Inc.  
P.O. Box 416, Cambridge, Ohio 43725-0416  
President -- Joy R. McFadden 614/885-2726  
Secretary -- Richard Jones 914/631-1656  
Editor -- Sue Rankin 513/833-4626  
NCC Museum /J. D. Hanes -- 614/432-4245

Please notify us immediately of any change in your address.

Please enclose an SASE when requesting information.

# CAMBRIDGE GLASS BOOKS FOR SALE

By National Cambridge Collectors, Inc.

- **Colors in Cambridge Glass \***  
128 pages, 60 color plates, fully indexed  
Hardbound with price guide. . . . . \$19.95
  - **1930-34 Cambridge Glass Company Catalog Reprint \***  
250-page reprint of original catalog  
Paperback with price guide. . . . . \$14.95
  - **1949-53 Cambridge Glass Company Catalog Reprint \***  
300-page reprint of original catalog  
Paperback with price guide. . . . . \$14.95
  - **1956-58 Cambridge Glass Company Catalog Reprint \***  
164-page reprint of original catalog  
Paperback. . . . . \$6.95
- \* For NCC members only, the above publications are available at a 10 percent discount.

By Bill and Phyllis Smith

- **Cambridge Glass 1927-1929**  
66-page reprint of original catalog  
Paperback w/identification guide. . . . . \$7.95

By Cambridge Buffs Study Group

- **Nearcut**  
108-page reprint of 1910 Cambridge catalog  
Paperback with price guide. . . . . \$9.95
- **Price Guide**  
Updated price guide for Nearcut Catalog  
reprint (including postage). . . . . \$3.00

By Mark A. Nye

- **Cambridge Rose Point**  
94 pages, fully indexed  
Paperback with updated value guide. . . . . \$12.95
- **Value Guide**  
Updated value guide for Rose Point book  
(including postage). . . . . \$5.00

By Mary, Lyle and Lynn Welker

- **Cambridge Glass Company**  
120 pages of reprints from eight old catalogs  
Paperback. . . . . \$10.00
- **Cambridge, Ohio Glass in Color II**  
Spiralbound. . . . . \$5.95

By Harold and Judy Bennett

- **1903 Cambridge Glass Company Catalog Reprint**  
106-page reprint of an original catalog  
Paperback. . . . . \$7.50

### Address your orders to:

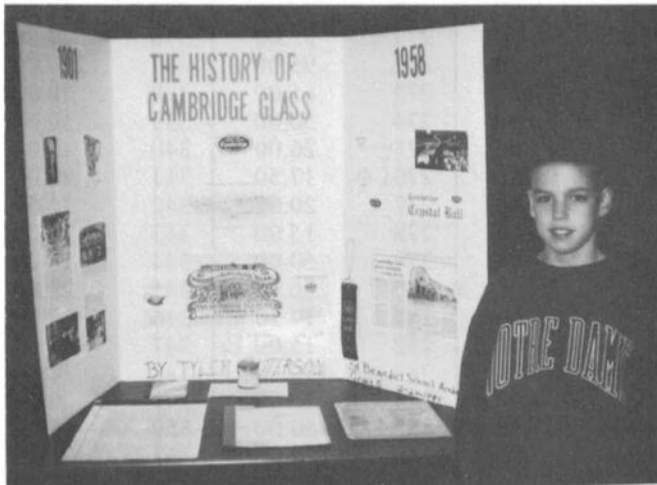
Books  
National Cambridge Collectors, Inc.  
P.O. Box 416  
Cambridge, OH 43725-0416

Please add postage and handling to your order (first book, \$2.00; each additional book, 50 cents). Ohio residents add 6½ percent state sales tax.

Dealer discounts available - please write!

## AUCTION - Continued from page 1

During the Friday evening Quarterly Meeting, Tyler Patterson, grandson of members Everett and Shirley Patterson, displayed a project that he had done about The Cambridge Glass Company for an academic fair at school. Tyler is a 5th grade student at St. Benedict Elementary school in Cambridge and did an outstanding job on the project. We would like to thank Tyler for donating his project to the museum.



Membership Chairman, Jeff Ross, announced that we now have 1,426 members. Convention Chairman, Mark Nye, reported that the theme for the 1994 Convention will be "The Roaring 20s" as they relate to the glassware produced during that period. He also said that the long awaited Caprice Book will be ready by Convention.

The program Friday evening was a preview of the Auction, with pieces of particular interest being pointed out by Auction Chairman, Lynn Welker. Besides the



program, Lynn also conducted the Show and Tell portion of the evening. Show and Tell further illustrated the rich bounty of the Cambridge Glass Company, since the items shown in no way duplicated the wide variety of pieces in the Auction. A most unusual find was a pin with a glass bell attached, a souvenir of the Ameri-

can Flint Glass Workers convention in Bellaire. This was not manufactured by the Cambridge Glass Company, but was unusual nevertheless. The most unusual



piece of Cambridge glass was the 8" Swan done in orange, blue and green sprayed enamels. Or was the most unusual the #3011 Nude cocktail with Topaz bowl and Crown Tuscan stem and foot? Or perhaps the #3011 Pink Crackle ivy ball on Crystal nude stem and foot was most unusual? There were over 30 items in the Show and Tell, and each was unusual.

If you missed the Quarterly meeting and Auction, you missed a wonderful opportunity to see and perhaps acquire a special piece of Cambridge glass. We can now all begin looking forward to June and the Convention and Show. Make your plans now to attend since you will have another opportunity to see, and perhaps find, that one special piece that you covet.

[See related article on the President's Circle on page 20.]

### 1994 Auction List Corrections

(indicated on the Auction Results with an \*)

- 26 - #98 Amber 5" 3 compartment candy box and cover, etched #731
- 53A - (added) #3 bird
- 53B - (added) #3011 nude 4½ oz claret, optic
- 89 - #97 Amber 6" candy box & cover, etched #725, gold trim wear
- 216 - quantity 2
- 217 - some chips
- 286 - one vase chipped
- 302 - quantity 2
- 320 - sun colored
- 356 - quantity 1, not pair
- 376A - (added) P101 34 oz cocktail shaker, etched Wildflower





# Flower Vase Inserts

by Mark A. Nye

On March 12, 1924, an application for a design patent to cover the design of a flower vase insert was filed by Arthur J. Bennett. On the same day, another patent application was filed, this one for a method of making flower vase inserts. Fifteen days later, on March 27, 1924 a third application was filed, this one seeking a patent for the flower vase insert.

The design patent was granted on May 20, 1924. The patent for the flower vase insert was issued just over a year later, May 26, 1925. For an unknown reason or reasons, patent protection for the method Cambridge had devised for making the inserts was not granted until November 9, 1926. (This patent appeared in the March 1994 CRYSTAL BALL) The balance of this article consists of the text of the flower vase insert patent and the drawing that accompanied it.

## FLOWER-VASE INSERT PATENTED MAY 26, 1925 1,539,153

To all whom it may concern:

Be it known that I, Arthur J. Bennett, citizen of the United States, residing at Cambridge, in the county of Guernsey and State of Ohio, have invented certain new and useful Improvements in Flower-Vase Inserts, of which the following is a specification.

This invention relates to certain new and useful improvements in flower vase inserts, and the primary object thereof is to provide an insert which is removably placed in the top of a vase and which is formed so as to receive and vertically hold the stems of a comparatively few flowers in regulable spaced order so as to present the same mass appearance as would be presented were a considerably greater number of flowers arranged in a vase and directly supported by or against the mouth or top of the latter.

A further object of the invention is to provide a device of this character which is attractive and ornamental, which contributes to and enhances the appearance of not only the vase, but the flowers as well; which provides an article top for the vase; which can be economically produced, and which holds the flowers to the best advantage and in an artistic manner.

A still further object of the invention is to provide an insert which can be easily removed from the vase and which accordingly is formed so as to prevent any binding of the insert in the vase.

The invention has still further and other objects which

will be later herein set forth and of themselves manifested in the course of the following description.

In the drawings:--

Figure 1, is a side elevation of a vase showing the present invention applied thereto;

Figure 2, is an enlarged top plan view of the insert, and

Figure 3, is a section on line 3---3 of Figure 1.

In proceeding in accordance with the present invention, a body 1 is provided, preferably of glass, although the invention is not limited in regard to the material of which the insert is formed. The body is formed with spaced upper and lower circumferential beads 2 and with vertical or axially disposed ribs 3, the lower bead and ribs affording projections which engage the interior of the top or mouth portion of the vase and prevent binding of the insert in the vase 5, thereby permitting of easy removal of the insert without danger of breakage of the parts. The body 1 is of downwardly tapering formation in order to generally conform to the upwardly flaring formation of the mouth of vases, conventional to the latter.

The body 1 is of hollow formation so as to permit the stems of the flowers to extend through the central portion of the insert. The top portion of the body 1 is formed with a series of spaced inwardly extending spikes or fingers 4, which latter extend toward the axis of the insert or toward the center of the hollow interior thereof. The adjacent spikes or fingers 4 form seats or pockets 6 in which the individual flower stems are received

and held being confined thereby against lateral movement, so that the buds or flowers are held in spaced and regulable order about the circumference of the insert and vase mouth.

The seats 6 prevent drooping of the buds or flowers, such as occurs in the instance of flowers placed in vases and engaged with the circumferential wall defining the mouth of the same, since in the latter circumstance, the flower heads, due to their weight, droop downwardly and outwardly over and beyond the vase exterior, with the result that unless a large number of flowers are used, the center of the vase is rendered bare of flowers. With the present invention, the buds or flowers are held closely adjacent to the center or axis of the vase, with the result that not only the same mass effect can be obtained with the use of a materially less number of flowers, but also a more artistic appearance and arrangement of the flowers is had.

In addition, it will be noted that the spikes or fingers form a novel and attractive closure for the upper end of the vase, and the spacing of their inner ends at the center of the insert, enables the flower stems to be easily inserted through the insert and freely moved from one seat to another in arranging the flowers to the best advantage without removal of the stems from the insert and replacement therein. The seats hold the flower stems inwardly of the mouth or top portion of the vase, and afford a contracted mouth for the latter having a common central opening into or with which a series of seats open or communicate.

What is claimed is:--

1. A flower holding insert for vases including a hollow body open at its top and bottom, a plurality of circumferential beads and vertical ribs on the body projecting outwardly therefrom and formed to engage the wall defining the mouth of a vase, and a series of fingers carried by the top of the body and extending inwardly toward the axis of the insert, said fingers being spaced to form flower stem receiving seats between adjacent fingers and the inner ends of the fingers terminating in spaced relation from each other to provide a common opening at the center of the top of the insert into which opening the seats open.

2. A flower holding insert for vases, including a body having spaced vertical and horizontal projections on its exterior to engage the vase and prevent binding of the body in the vase, and flower stem supporting means carried by the body.

3. A flower holding insert for vases composed of a substantially cylindrical tubular body the upper end of which extends inwardly and is provided with a series of extensions, the extensions being extended inwardly and arranged in spaced relation to form a series of seats having bottoms formed by the said inwardly extending upper end of the body and having sides formed by the adjacent sides of the extensions.

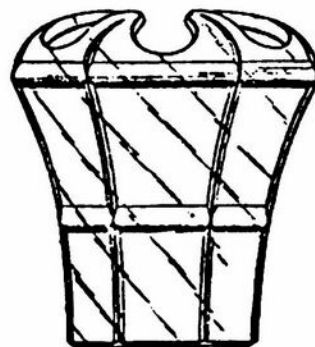
4. A flower holding insert for vases composed of substantially cylindrical tubular body of relatively long and thin formation having its upper end formed with a series of solid spaced fingers that project beyond the upper end edge of the body and extend inwardly to form flower-stem receiving seats.

5. A flower holding insert for vases composed of a substantially cylindrical tubular body of relatively long and thin formation having its upper end formed with a series of solid spaced fingers that project beyond the upper end edge of the body and extend inwardly to form flower-stem receiving seats, said body having spaced rib-like projections on its exterior to engage the vase interior so as to prevent binding of the body in the vase.

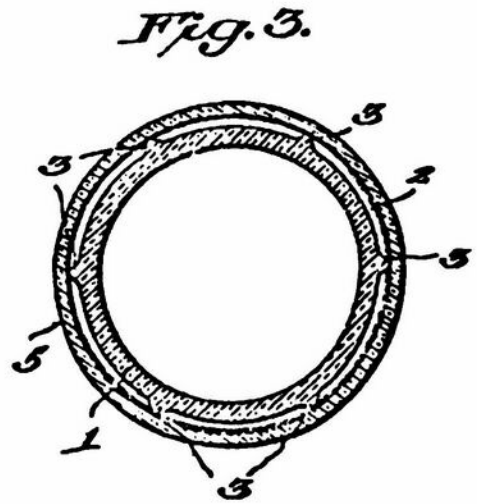
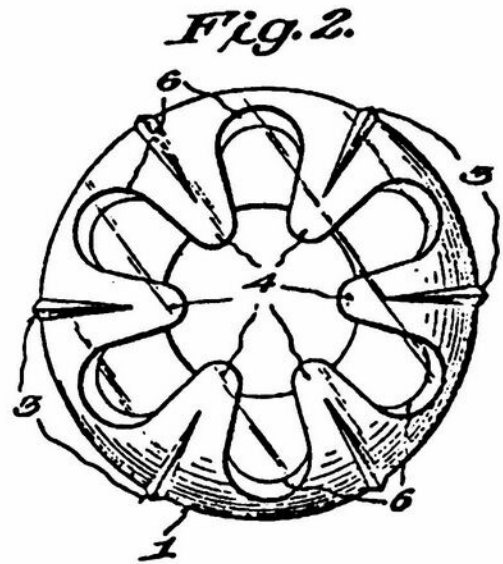
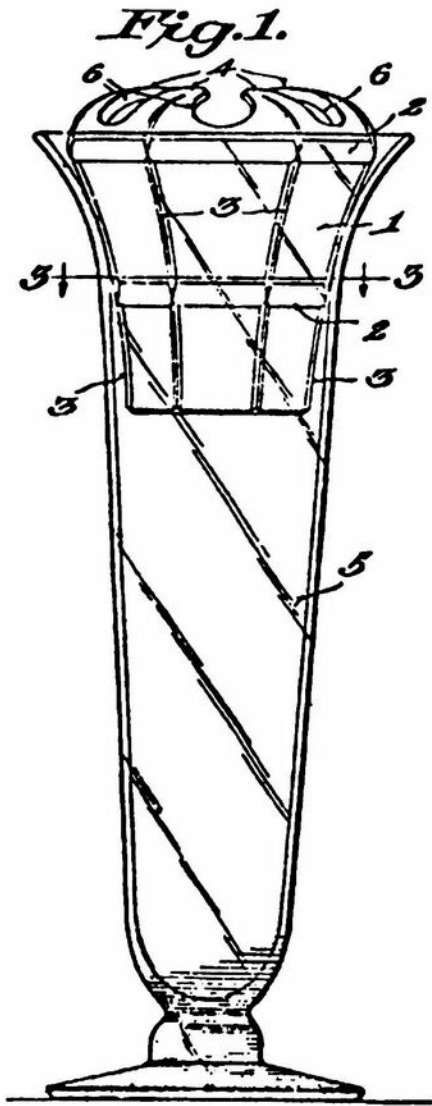
6. A flower holding insert for vases composed of a substantially cylindrical tubular body having its upper end formed with a series of solid spaced fingers that project beyond the upper end edge of the body and extend inwardly to form flower-stem receiving seats.

7. A flower holding insert for vases composed of a substantially cylindrical tubular body having its upper end formed with a series of solid spaced fingers that project beyond the upper end edge of the body and extend inwardly to form flower-stem receiving seats, the lower end of the body providing a continuous substantially circular edge against which the flower-stems may engage.

In testimony whereof I affix my signature  
ARTHUR J. BENNETT



**A. J. BENNETT**  
FLOWER VASE INSERT  
Filed March 27, 1924



Inventor  
Arthur J. Bennett  
284  
Attorney

---

---

# Club News

---

---

National Cambridge Collectors Inc.  
Quarterly Meeting  
Pritchard Laughlin Civic Center, Cambridge, Ohio  
March 4, 1994

The meeting was called to order at 7:45 p.m. by President Joy McFadden. The minutes of the November 6, 1993, meeting were read by Secretary Rick Jones. Treasurer Dave Rankin reported the following:

<u>CASH:</u>	
Checking account as of 3/2/94	\$25,682.47
Money Market as of 12/31/93	<u>\$53,620.54</u>
Total cash	\$79,303.01
<u>1993 NET INCOME - Unaudited:</u>	
Operating	\$5,151
Museum	<u>\$1,316</u>
Total	\$6,467

## COMMITTEE REPORTS

**ACQUISITIONS** - Joe Andrejcek reported that three shelves in the Museum are now devoted to recent Club acquisitions including a 5" Crown Tuscan vase etched Portia.

**MEMBERSHIP** - Jeff Ross reported that we now have 1,426 members, including 1,038 master members, 380 associates, 3 life and 5 honorary. He asked if any member has a mailing response problem due to the difficult winter, please recontact the Club through the post office box or Museum.

**MUSEUM INTERIOR** - J. D. Hanes announced today's reopening of the Museum and the new museum hours for 1994. The severe winter delayed many of the off season cleanup projects but they are now in progress. New for 1994 are a special display of 20s items per this year's Convention theme and a new stemware display as suggested by a member. Also, an educational display has been created to show various production phases like etching, cutting and gold encrusting. The club is updating the inventory of donated items. Due to prior year gaps in paperwork, please bring to the club's attention any donation you've made that has not been acknowledged in the Museum display. J. D. also announced a donation of a complete line of Moonlight Blue Caprice stemware from Cindy and Rick Jones. They will be announcing a matching challenge to other Caprice collectors in conjunction with the June release of the Caprice book.

**NON-GLASS ITEMS** - Tarzan Deel updated the membership on the involved process of inventory and requested volunteers to assist in the process.

**PROJECTS** - Tarzan reported that the Prism sign project was successful and sold out on March 1. Members asked several good questions about the planning of the promotion. Tarzan indicated that final income information for the Museum fund raiser was not yet known.

**PUBLICATIONS** - Mark Nye said the Caprice book will go to the printer this month and totals nearly 200 pages. A retail price decision will be made based on the printing cost but could be \$21.95. A member suggested a higher price as the end product will be of great value to collectors. Mark said that the Stemware book would follow the Caprice book later in 1994.

**CONVENTION** - Mark gave an update of Convention planning. The speaker at Saturday night's banquet will be J. W. Courter. Friday night's dinner will now be a "sit-down" instead of a buffet and will begin at 8:00 (new show hours are 4:30 to 7:30). A souvenir booklet will be provided in the Convention package and is a donation. The Best Western will be the headquarters motel and members are encouraged to make reservations NOW. Mike Arent is coordinating a Thursday golf scramble and needs 12 players. There will be prizes for the winning team. There will be a car caravan to Fenton. Frank and Vicki Wollenhaupt agreed to lead the caravan.

**NOMINATING** - The committee nominated a slate of five for the three available Board of Director positions. They are: Mark Nye, Joe Andrejcek, Charlie Upton, Mary Beth Hackett and Bill Hagerty.

**PUBLICITY** - Chairperson Cindy Arent updated the Club on co-op advertising that is being prepared in conjunction with 4 other museums. Also Convention advertising has been prepared and is ready for distribution.

**ANTIQUÉ SHOW** - Mary Beth Hackett reported that dealer contracts have been mailed. She confirmed the new Friday show hours and welcomed other suggestions and comments.

**FLEA MARKET** - Mike Arent reported that the Main Pavilion at City Park will again be the venue but the new starting time is 5:30 a.m. for everyone. Dealer setup will be at that time and early buyers will be



admitted then for a \$10 fee. Anyone wishing to set up at the Flea Market should contact Mike at the number provided in the CRYSTAL BALL, and he will send you a contract.

CRYSTAL BALL - Editor Sue Rankin indicated the March issue mailed on February 23 and there appeared to be no major problems with delivery. She encouraged members to send letters and article ideas and to also encourage dealer friends to use our Dealer Directory. It's a good deal.

#### OLD BUSINESS

None.

#### NEW BUSINESS

Anyone who has not yet received a thank you (tax) letter for 1993 donations should contact J. D. Hanes. He also asked that if inquiry letters are sent to the Museum (ala the 288 responses from a recent "Ask Anne and Nan" column), that an SASE be included.

President Joy McFadden recognized the inaugural members of the President's Circle who provided glass for the auction with 100% of the proceeds dedicated to the Museum Fund. Each of the following was presented with a custom certificate of appreciation: Frank and Vicki Wollenhaupt, Tarzan Deel, Kelvin Moore, Herman Clark and Don Matchett.

The meeting was adjourned at 8:45 p.m. to be followed by Show and Tell and an Auction Preview led by Committee Chairman Lynn Welker.

Respectfully submitted,  
Richard D. Jones, Recording Secretary

---

---

## *Study Club News*

---

---

### **Study Group #11 - Chicago Area "Cambridge Nudes"**

The December 19, 1992, meeting opened at Mary Sue Lyon's with hors d'oeuvres, sparkling and seasonal liquid refreshments. Here eleven members including one new member (Heather Moore) and seven guests mingled and discussed their favorite type of glass collecting. After approximately two hours of getting in the mood and honing our appetites, we proceeded to the home of the Toby Macks for the remainder of the evening. Here we were treated to an exquisite holiday dinner.

Following dinner we had a show and tell session followed by an exchange of grab bag gifts. The following is a listing of the items from the show and tell portion of the program:

#3011 Crystal optic cordial  
Seven #928 Crystal fruit saucers etched Gloria  
#1020 Amber cocktail shaker etched 310  
Special Article #248 10-inch low footed comport in Ivory with black edging  
Three Libbey Crystal cocktails with one each Kangaroo, Bear and Cat stems  
Tiffin Orchid cocktail etched El Dorado  
#1206 Jade perfume  
Imperial candlestick in Crystal and orange  
#3400/45 11-inch Crystal bowl "Lotus" five petal rock crystal cutting  
#119 Crystal Caprice two part relish gold decorated  
Special Article #39 11-1/2" bowl in Primrose with black edging and "Lotus" eight petal Daisy etching  
#3797/164 Carmen Cambridge Square 7 inch bonbon  
#3797 Cambridge Square Crystal crackle cocktail with paper label  
#3797 Cambridge Square Crystal crackle tumbler with paper label  
Near Cut "520" six inch bowl in Crystal, signed  
#957 Light Emerald ice pail "Lotus" grape gray engraving  
Flint glass three oz. shot glass in Crystal two rows printies with ground pontil circa 1865  
Sunset 1-1/2 oz. shot glass  
1-1/2 oz. Crystal cut shot glass, manufacturer unknown  
#693/3000 Crystal Canape Set three oz. gold encrusted Imperial Hunt Scene etching  
Ivory perfume etched Dragonflies and Butterflies enameled in greens and reds  
Tiffin green 1-1/2 oz. shot glass - optic

Our next meeting is tentatively scheduled for early February 1994 (already!) at the home of the Larry Powers.

Submitted by  
B. J. Kersey

---

### **Study Group #11 - Chicago Area "Cambridge Nudes"**

Ten members gathered at the home of the Larry Powers for our first meeting of 1994. Following a delightful dinner featuring beef brisket, cheese grits and a dessert of feather light cheesecake we had a lengthy discussion on black glass.

Following this discussion, we conducted a show and tell session that included the following items:

Paneled Tiffin Crystal shot glass etched Pig underlined, Gents underlined and Ladies underlined  
Fostoria "Spool" covered Azure powder jar with paper label

Fostoria "Spool" Azure ashtray

A plethora of shot glasses in various colors by various manufacturers etched Pig, Gents and Ladies

Crystal whiskey glass decorated with a rock crystal cutting of unknown origin

#3150 Crystal goblet etched Lorna

#3400 Ebony well type ashtray

#3500 Crystal stem and Royal Blue bowl goblet and wine

#343 Caprice Royal Blue eight inch vase

Pair M495 Crystal two light candlesticks etched Rose Point

Submitted by

B. J. Kersey

---

### **Study Group #13 - Southwest Ohio "Miami Valley, Ohio"**

The Miami Valley Study Group held their meeting on January 4, 1994, at the Huber Heights Public Library. There were eleven members present.

During the business meeting we discussed the work on the etching book, our participation in the March Benefit Auction, and fund raising at Convention. Programs for future meetings include reproductions and reissues by other glass companies, glass made during the reopened period, tumblers, and smoking items. We have been videotaping these programs so that they will be available for future reference.

Show and Tell items included: Blue Caprice individual sugar and creamer; etched Wildflower sherbet with Mandarin Gold bowl; Amber Decagon cups and saucers; Amber #3400 cream, sugar, and relish; Amber #1176 8" salad plates, 6 1/2" Milk swan; and a #101 Pristine 32 oz. cocktail shaker, etched Chantilly.

Georgia Otten gave an informative presentation on Imperial reissues from Cambridge molds. The program was videotaped.

Submitted by

Judy Rhoads

## **Projects Committee Report**

**Tarzan Deel, Jr. Chairman**

Some of you have asked several good questions as to why the "Prism Sign" project was run a particular way. I will try to answer your questions in this article.

This project is the first NCC project since the Eagle Bookends were done in 1986. We had no idea what reception the signs would receive and could only proceed with our "feelings" about the project. After reviewing the problems and successes in NCC's project history, the one thing we did not want to do was add to our already bloated inventory. This was the basic reason for limiting the run to 250 signs. The other reason for the limit was to maintain an interest in the project by the membership. Since the sale is limited to the membership this was thought not to be a problem.

As I am writing this article, we have just exceeded the 250 sign allotment. We will be returning the excess orders and checks with appropriate explanations.

One complaint has been that limiting the number is unfair, they want to help the Museum too. To this I simply say, if you got your CRYSTAL BALL in time to place an order and didn't, you missed the boat. If your goal is to help the museum, send the check as a donation or buy items out of our inventory.

The question has been raised "why can't we sell the signs in the museum?" The problem is price, the average price of an item that sells at the Museum is \$6.00. This would mean that we would be selling the signs below the price we are paying for them, not a good prospect for fund raising.

The question of distribution of the signs is not as simple as it sounds, but essentially is as follows. The post box is emptied every day, the letters are dated with the day received and are separated by postmark date. The allocation is by postmark date. For those who think they will not be able to get a sign due to the postal service problems, I sent my order by Express Mail. We have received orders from across the country without difficulty.

I appreciate all of your orders and it is reassuring to know that this effort is appreciated. Your letters indicate that this is a project the membership supports. We are currently looking into the next color that the sign will be made in, which will be announced in the CRYSTAL BALL. Additional projects will be discussed in future issues of the CRYSTAL BALL. One such project

will be in support of the Relocation/Expansion Committee recommendations.

We can always use help. If you are going to be in the area and want to help out for a day or two, drop us a line at the P.O. Box or call J. D. Hanes at the Museum.

If you have any questions, please contact me through the Museum.

---

---

## THE MORE I LEARN, THE LESS I SEEM TO KNOW

by R. F. "Bud" Walker

Many of us who collect Cambridge glass think of A. J. Bennett and his accomplishments as the head and later the owner of the Cambridge Glass Company. We tend to forget that the National Glass Company purchased the land and raised the money to construct the Cambridge Glass factory. According to all that I have read and heard, this was the only new factory that The National Glass Company ever constructed.

In reading books about glass companies of the Ohio Valley area, we learn that the new Cambridge plant caused a great deal of concern and anxiety among those members of the National Glass organization who were having problems in keeping their operations profitable. One of the companies that was subject to much of the speculation was the Findlay Glass Company of Findlay, Ohio. There were rumors that the plant was to be closed, and much of the equipment such as presses and moulds would be moved to the new plant in Cambridge. As history shows, many of the rumors turned out to be true.

I have always heard that glass companies often lent and borrowed moulds, so it is easy to believe that the National Glass Company would move moulds among their member companies.

Due to the ice and snow this winter, which has been the worst we have had in years, I have been catching up on my reading. One book I read was "Dugan/Diamond The Story of Indiana Pennsylvania Glass" by William Heacock, James Measell and Berry Wiggins. It is an outstanding book on the history of this glass company.

You can imagine my surprise when I turned to page 15 of this book and saw a picture of the Northwood company's "Crystal Queen Pattern." The picture showed a bowl and tumbler that could be had in several sizes.

The pattern looked so familiar; I started looking through the Cambridge 1903 catalog. On page 26 there it was. Cambridge pattern number 2589. This is Northwood's "Crystal Queen Line." The pieces are identical, which would lead one to believe that the Northwood moulds went to the new factory at Cambridge when it opened.

One has to wonder how many other patterns are out there waiting to be discovered? So much of the history of these glass companies has been obscured by time, that it gives one a thrill to find the smallest piece of new information that can help increase our knowledge of the glass companies we collect.

[Editor's Note: Bud added a P.S. pointing out that Dr. James Measell wrote an article addressing this very subject that was published in the January 1992 CRYSTAL BALL on pages 4 through 7. Bud found Jim Measell's article after having finished writing this article. The information about mold swapping does bear repeating.]

---

---

## We Get Letters

Dear Sue:

I am writing to let you know that I also own two cornucopias with sterling silver bases. Mine are done in the Chantilly pattern but bear the same mark described by Kathy and Glenn Corbett in your "We Get Letters" column, December 1993 issue page 7.

Sincerely,

Marilyn Hayes  
New York

---

Dear Marilyn:

Thank you so much for your nice letter. Each bit of information we receive adds to our knowledge of Cambridge glass production. The Cambridge Glass Company had an extensive product line. Adding the decorations done by Cambridge and others, makes the possible combinations seem limitless. It is a daunting task to attempt to learn but a fraction.

Sue

---

Dear Sue:

On Sunday, February 6, 1994, while walking through a local antique show, I found a 10 inch footed bowl marked Nearcut. Upon arriving home, I looked through the 1910 Nearcut catalog reprint. On page 73, I found the pattern listed as a Nearcut Special 2588. The pat-

tern of the bowl was the same as the one that I had purchased. The size of the bowl and the base were different.

On page 30 of the 1903 Catalog, I found the shape and size of the bowl. The shape of my bowl is the same as the one in the lower left-hand corner, except it has a base like the one in the center of the page. I was surprised to see the pattern number was 2588. It is totally different from the 2588 in the 1910 Nearcut catalog. I wonder how this came about? Did they change the mould without changing the number? Can anyone shed some light on this? I would be anxious to learn about how this came about.

Bud Walker  
New Jersey

---

Dear Bud:

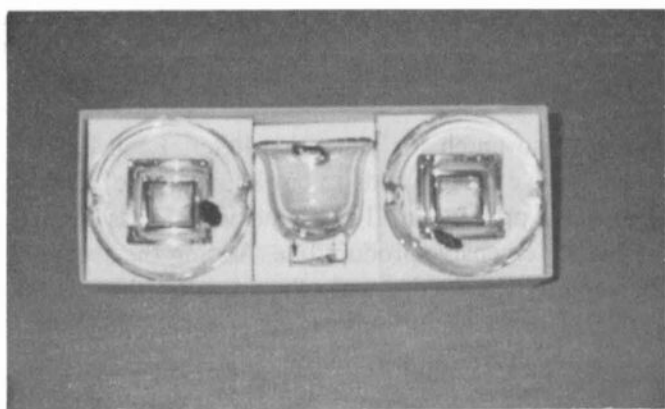
I just took a trip down to my glass room to look at my 2588 Nearcut bowl. Although mine is shaped differently, I also have one with a base and top which are a combination of those pictured. I have no idea how this came about. Perhaps this is a copy of another company's mold or a reworked mold from another National Glass factory. Does anyone out there know?

Suc

---

Dear Suc:

Enclosed is a picture of a 3797/152 three piece Smoker Set in the original display box. The price marked on the box was \$2.50.



Along with the Cambridge labels on each piece is a little label which says Patent Pending.

The set was found last fall in an antique shop at Yankton, South Dakota.

We plan on donating the set to the Cambridge Museum.

Very sincerely,

Winnie and Harold Osbon  
Nebraska

---

Dear Winnie and Harold:

What a wonderful find! We appreciate your generosity in giving it to the Museum. It's members like you that assure a fine variety in the displays, and allow all of us to see and appreciate the wonderful bounty of the Cambridge Glass Company.

Suc

---

HELP!

Can anyone help me? I was asked over the phone if I would be interested in purchasing a Cambridge "Sequoia" comport. I told the dealer I had never seen or heard of "Sequoia" and had no idea that Cambridge ever produced such a line. I was assured that they had and he would guarantee it to be what he said.

Does anyone have information or photos of this elusive line?

Thanks,

Bud Walker  
New Jersey

---

Dear Bud:

This was one name I had never heard. I made some inquiries and Lynn Welker suggested that "Sequoia" is the original name for "Arcadia." He indicated that he would provide more details.

Preliminary research indicates that there is an interesting background story associated with the name "Arcadia." Space does not permit a complete discussion in this issue. I will follow up.

Suc

---

Dear Suc:

In the December, 93 issue of the CRYSTAL BALL, I came across a fascinating article by Rich Bennett on page 6. He told about the Cambridge Glass dump and the thousands of pieces of glass. I think those pieces of glass should be packaged for sale to Cambridge Glass collectors as examples and specimens of color glass.



They indeed bear their own historic point of interest and they've survived the demolition of the factory.

I for one would love to have many of these specimens to display in small boxes or whatever size in my cabinets.

Stationary notes could also be sold bearing an etching or sketch of the Cambridge Glass factory. A local museum in our area here in California does this.

T-shirts could be made available - lettering of - "Cambridge Glass Collector," etc. and aprons and hot pads with stitching on - "Cambridge Glass Collector." Yearly calendars with pictorial views of Cambridge Glass and what have you, coasters and placemats a good item.

I'm sure many Cambridge Glass Collectors would be interested in such items.

Thousands and thousands of pieces of Cambridge Glass - "Hidden Treasure" as Rich Bennett's article stated - and a revenue as specimens and collector items for the Cambridge Glass Museum, \$1 for sm., \$2 or \$2.50 for med. and larger pieces a little more. I'll be first in line.

Bonnie J. Quaintance  
California

---

Dear Bonnie

Thank you for your suggestions for raising more funds for the operation of the museum. Over the years, many different fund raising projects have been attempted including the T-shirts. The really successful projects have a common theme. They involve the selling of Cambridge Glass (Auction, Antique show and Flea Market) or information about the glass (books). These efforts have appealed to thousands of buyers in and outside NCC. All other projects, like the current prism sign, seem to be of interest to only a few hundred of the most ardent NCC supporters. Chairman, Tarzan Deel indicates that your suggestions will be considered by the Projects committee.

Also, see Willard Kolb letter, following, for additional discussion of the many factors to be considered when undertaking such projects.

Sue

---

Dear Sue:

I read with interest the letter in the March issue of the CRYSTAL BALL by Mac and Georgia Otten. On the

surface it would seem that they have a very good idea. I note, however, that they were the only ones who were willing to express their feelings publicly. According to a note at the bottom of the letter "others have expressed similar thoughts." Were these other "thoughts" conveyed to the Board and Project Chairman by letter through the Club office or through our medium, the CRYSTAL BALL? These are the two avenues that the Board has in helping them to make proper decisions.

I would like to take this opportunity to express my thoughts on projects of this nature and perhaps clear up a few of the misunderstandings. First of all I think the Project Chairman and the Board made the right decision in limiting the amount of items produced to 250 pieces. If you look at the number of members in the organization this translates into approximately 10% participation by the membership. This is the normal average for projects in all Clubs that I am associated with, which is seven. Only on rare occasions does membership participation exceed this. In cases where initial sales exceed this percentage two things have to happen. The initial sales are open to members and non-members alike or the previous item has increased in value prior to the issue of the following item. I realize that to limit an item for the express purpose of increasing its value is not an easy pill to swallow and shouldn't be done for individual benefit. The facts are, that is the nature of the beast.

Pre-selling an item for a certain period of time and then only producing what you have orders for will not translate into more than 10% of the membership ordering the item. It will not increase the value of the previous item since it does not create a demand for that item and therefore sales of the next offering will decrease. It may be in some ways a more sensible way of doing business, however. This is a business by the way.

I served on the Board of Directors for almost 14 years, served as President for eight of those years and as Project Chairman for six or seven years. We finally had to give up projects of this type for several years because as time went on we weren't able to recover our costs immediately. Money that could be used for other purposes or invested in an interest-bearing account was tied up in inventory. On all of these projects, and I am talking about the cup plates and bookends, we took the minimum amount of ware that the companies would produce for us, except for the Lady Leg and Eagle bookends. At the time no one thought the production amounts were excessive. We know now that these were excessive amounts and still can't move these items out at a very reduced price. This has reduced the value of

the items that dedicated members bought during the original issues. Of course it should not work this way, but it does. There is no doubt in my mind that members who participate in these projects do it to benefit the organization. Somewhere along the line though even the most dedicated member does not want to see their purchase depreciate in value. They are human.

I do not have the proper records available to me at this time, but I do remember that we saw a trend developing several years ago when we decided to discontinue projects of this type for a while. At first we thought that members were becoming uninterested in reproductions, even though the Club always marked what they had produced so they couldn't be mistaken for the original. It then dawned on us that this wasn't the case at all.

The Lady Leg bookends had sold out almost immediately and a secondary market was created increasing their value. We next had the Lion bookend produced and it sold out in a very short time. The Club kept fifteen, I believe, to be sold at certain intervals during the annual auction, to set a value. Unfortunately they never did that well during the auction and I know of some of these being sold at other auctions that only brought half of their original value. Next we brought out the Scotty Dog and this is where we should have gotten our first clue. The Lions weren't bringing an increase on the secondary market and the Scotty Dog was a disaster. It was a long time before we were able to recover our initial investment and in fact haven't been able to sell off all the Scotty Dogs since they were produced in 1979. My memory may be playing games with me but I think there were less than 400 firsts to be sold.

In 1986, after we had acquired the moulds from Imperial, we decided to have the Eagle bookend produced in cobalt blue in a very limited quantity. Less than 250, I believe. This was one of the nicer and more attractive of the bookends that were previously produced. What we didn't recognize at the time was that the Scotty Dog had been a flop and therefore would determine the sales of the Eagles. We are still trying to sell the Eagles. (Note that the Membership at this time was within about 150 members of what it is now.)

The cup plate project followed the same trend. As the value of the previous issue failed to increase, the sales of the following issue decreased. It finally had to be abandoned also. These are still available in large quantities at about half the price of the original issues.

All of these previously mentioned things happened with the membership steadily increasing. The sale price of these inventory items has dropped drastically. They are now a very good bargain. Why aren't they being bought by a membership of about 1400? The Club needs to recover the money tied up in this inventory and put it to good use. No one needed 32 more Scotty Dog bookends, but they made nice gifts for friends. Let's all work together and try to solve this dilemma so we can get on with other projects. If you have a suggestion as to how these projects should be handled, write to your Board of Directors or Project Chairman. The Board of Directors is the governing body of this organization and I am sure they are interested in suggestions you may have. The Board must act in the best interest of the organization. When they are right there is seldom any credit given, but when they are wrong, I can tell you who is going to get the heat.

The creation of a "limited issue" was not at any time the consideration of the Board of Directors when I served on the Board. I don't believe it was a consideration in this case either. It was simply a matter of good business practices, something they are entrusted with and a decision they no doubt made after reviewing the prior projects.

I know of no one who has ever written their State Lottery complaining that they bought tickets for the purpose of becoming an instant millionaire, only to lose, and demand their money back. This investment doesn't go to a good cause even though they indicate that it does. I seldom read a newspaper in which some State lottery official isn't being indicted for robbery. Therein lies a solution to the problem we think "We" have. I solved my problem with the way the "Board and Project Chairman handled this situation." I was away on a trip during the time the orders for this project were to be postmarked. I arrived home ten days later, on 02/20/94, wrote my check and submitted my order for two Prism Signs with the understanding that if they were already sold out, the \$32.00 was to go to the Museum Fund. This is two weeks and one day since the postmark of 02/10/94 would be honored. Without having any knowledge as to how many of the Prism Signs have already been ordered, I will bet another \$32.00 that I will have my order honored because they are not sold out yet. That will also go to the Museum if I lose.

Much ado about nothing.

Respectfully,  
Willard P. Kolb

# **A MUSEUM CLOSE CALL**

by J. D. Hanes

[Author's note: This article was prepared for the March issue, but was temporarily lost by the U.S. Postal Service - routed through Minnesota.]

January 29 and 30 were tense days for your Museum and Museum Interior Committee.

After having about 18 inches of snow on the ground, Mother Nature decided we needed to thaw out. The warmer temperatures were appreciated by people in the area. But, the rains that accompanied the melting were not as appreciated. This meant flooding!

As some of you know, in 1980 the current Museum building was the State of Ohio License Bureau for Guernsey County. During the flood of August 1980 this building had three feet of water inside it. This was an unusual occurrence according to "old timers" in the county.

On the evening of January 29 several of us on the Interior Committee were leaving the Museum after working on a display. We noticed that the water across Route 40 was high. Upon further inspection, we found it was about one foot from coming across the road. Now, the question was, "How much higher will it go?" Upon checking with the Sheriff's department, we were informed that the Army Corps of Engineers that monitors such things does not monitor Leatherwood Creek which is the one along Route 40.

After conferring with our President, Joy McFadden, as to the plan of action I had in mind, a group met at the Museum at 9:00 p.m.. Our plan was to move everything off the floor or in the bottom drawers of file cabinets. This included all of the boxes containing the glass for the Auction. We knew that, since it had stopped raining early Saturday morning, the water would not rise quickly; therefore, if it did get near the Museum we could move more things as needed. The Sheriff's department was to call me in the night if the water started to cross Route 40. Thank goodness the call never came. However, the water did get to within three inches of Route 40. Needless to say this was a rather sleepless night for me.

I want to say a BIG THANK YOU to Cindy Arent, Mike Arent, Carl Beynon, Shirley Beynon, Cathy Chester, Doyle Hanes, Judy Momirov, Marybelle Moorehead, and Jeff Ross. All it took was one phone

call and they were there to help do the work.

This was an exercise that I hope and pray we will never have to do ever, ever again. When you see these people, please express your appreciation to them for their dedication.

---

---

## **MUSEUM MOMENTS**

by J. D. Hanes

Hello again after a two-month absence. I wrote most of this article for the last issue of the CRYSTAL BALL, however, my plans were changed due to the Postal Service not getting the packet to Sue for inclusion in the last issue.

Also I had problems that made it impossible to write an article for the February issue. From the middle of December through the end of January, I was under the weather - first with a cold, then respiratory flu. If you have not had this, I hope you do not get it. I finally got rid of the bad cough that accompanied this on January 28, six weeks after it started.

March was a real problem too. Not only did we have the extra mail for the Prism Sign orders, but my dad, Doyle, was in the hospital for a few days. He is on the mend as I write this. He and I both want to thank all of the local members who knew of his illness for all of your thoughts, prayers, visits, calls and cards. As I have told many people, there are no better people than glass collectors.

My problems are very small compared to our friends who live in the area of the California earthquake. My thoughts and prayers are with all of you who have been affected. From those I have talked to, the devastation is almost too much to believe. However, those I have talked to report that although there was damage to their collections and property, they were all right physically.

I also have the same concerns for all of those in this area of the United States who, simultaneously, were suffering with the huge snowfall and severe deep freeze. I hope that all of you survived intact. Our low in Cambridge during the deep freeze was -32 degrees with a wind chill around -60 degrees.

The Museum survived intact, with no furnace problems or frozen pipes. The only problem was that I could not get to the Museum on a regular schedule to work on all of the transmittals and correspondence. So,



if you have written a letter to us and have not received a reply, please be patient. This also applies to any delays in getting your membership renewals; book orders and the like. With the snow plows creating 4 to 5 foot drifts in front of the Museum gate and our neighbor Don Conkle, who usually plows the entrance for me, suffering with the gout, January was not very productive. However, spring is hopefully on the way and I can get all of this work caught up!

Along the same lines, if any of you have not received a tax letter for any of your donations to the Museum in 1993, would you please either call me or send me a post card. We are still having some problems with outgoing mail and we want to make sure that you are all properly acknowledged for your donations. You are very important to us.

I have another note about letters being sent to the club. There is a nationally syndicated column called "Ask Anne and Nan." In one of their columns in November, a writer asked about Cambridge Crystal. These ladies listed our address and told a little bit about us. They asked their readers to write to us with questions and to enclose a self addressed stamped envelope. I did not realize how many readers that this column has. As I rewrite this article on March 1, we have so far received 288 letters from people who either want more information about the organization or want questions answered. Needless to say, I am still trying to get caught up on all these. In case you didn't know, if a person writes with a question, I answer each with a personal letter. I know that this is more time consuming, however, I detest form letters. So as I said, I ask for your patience with me if you are waiting for an answer.

I have one last thing to say about the mail for the Museum. We appreciate all of you who tell people to write to the post office box about the organization. However, if you could ask those people to please enclose a self addressed stamped envelope, it would be greatly appreciated. If we can save the cost of the postage and the envelope, it helps keep our operating costs down and we can do more for you, our members, with the available funds.

Here is a list of the donations that we received near the end of 1993 and in January and February 1994. I am sorry that these are so late in being recognized.

From Don and Arlene Matchett, W81 2 handled open salt in Milk Glass. (This is the Mt. Vernon pattern)

From the collection of the late Evelyn Allen, a Rubina #1630 12 ounce tumbler with optic.

From Norma and Don Oliver a cash donation.

From the 20-30-40 Society a donation for Museum glass purchases.

From Tom and Harriette Bond a cash donation in memory of Ed Trindle.

Again, we do want to thank all of you for remembering your Museum. All these items help to keep the Museum displays growing for the benefit of all of you, and the other glass enthusiasts that visit the Museum. I hope that all of you were successful in ordering the Prism Sign. These are very nice items and the color is really great. They should make a nice fund raising item to help the Museum.

Your Museum is now open. With all of the bad weather, ailing committee members, and other problems that were unforeseen, the museum still needs to have some work finished on the displays. We always try to take any suggestions for changes in the displays and use them. One of these suggestions is a major change that we started in the back room of the Museum. Although not completed as I write this, we hope to have it finished by April. We will also work on a display for the "Roaring 20s" Convention Theme. We are also trying to finish a "physical" inventory of the collection. I will write more on this next month.

Remember that we do value all of your ideas about the Museum. As this article is extra long, I will end this so that the whole newsletter is not taken up by my article.

Until next month, Happy Cambridge Hunting!

---

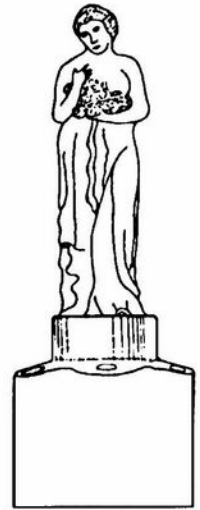
---

## **CALL FOR VOLUNTEERS**

Your Museum Exterior Committee is asking for more volunteers to join their committee. Most of the work occurs during the warmer months with grass needing to be mowed, flower beds weeded and minor repair work taking place. If you are handy and can volunteer a couple of hours a month, please contact J. D. Hanes at the Museum.



**NATIONAL CAMBRIDGE COLLECTORS, INC.  
21st ANNUAL CONVENTION  
JUNE 23 - JUNE 26, 1994  
PRELIMINARY SCHEDULE**



**THURSDAY, JUNE 23**

9:00 a.m.	Registration Desk opens	Best Western Motel
9:00	Golf Tournament	Salt Fork State Park
9:30	Fenton Tour	Departs from Best Western Motel
1:00 p.m.	Audio Program	Conference Room - Pritchard Laughlin Civic Center
7:00	Pool Party	Best Western Motel

**FRIDAY, JUNE 24**

8:30 a.m.	Coffee With Cambridge	National Cambridge Collectors, Inc. Museum
10:30	Boyd Crystal Art Glass Factory Tour	
10:30	Mosser Glass Co. Tour	
Noon	Cambridge & the 1920s - Mark Nye	Conference Room - Pritchard Laughlin Civic Center
1:30 p.m.	Slide Program - Cambridge Etchings	Conference Room - Pritchard Laughlin Civic Center
2:30	Slide Program - Cambridge Figurals	Conference Room - Pritchard Laughlin Civic Center
3:30	Slide Program - Cambridge Colors	Conference Room - Pritchard Laughlin Civic Center
4:00	Book Sales Table Opens	Galleria - Pritchard Laughlin Civic Center
4:30	Antique Show Opens	Exhibit Hall - Pritchard Laughlin Civic Center
7:30	Convention Chairman's Reception - Cash Bar	Galleria - Pritchard Laughlin Civic Center
8:00	Friday Night Supper	Galleria - Pritchard Laughlin Civic Center
9:00	Mini-Auction	Galleria - Pritchard Laughlin Civic Center

**SATURDAY, JUNE 25**

5:30 a.m.	Flea Market Opens to Early Buyers	City Park Pavilion
7:00	Flea Market Opens	City Park Pavilion
11:00	Antique Show Opens	Exhibit Hall - Pritchard Laughlin Civic Center
12:30 p.m.	Cambridge by Imperial - Willard Kolb	Conference Room - Pritchard Laughlin Civic Center
3:00	Glass Identification - Lynn Welker	Conference Room - Pritchard Laughlin Civic Center
4:00	Bring & Brag - Lynn Welker	Conference Room - Pritchard Laughlin Civic Center
6:30	President's Reception - Cash Bar	Galleria - Pritchard Laughlin Civic Center
7:00	Annual Banquet	Galleria - Pritchard Laughlin Civic Center
	Post Banquet Get-together	Best Western Motel

**SUNDAY, JUNE 26**

8:30 a.m.	Buffet Breakfast	Galleria - Pritchard Laughlin Civic Center
9:30	Annual Meeting	Galleria - Pritchard Laughlin Civic Center
11:00	Antique Show	Exhibit Hall - Pritchard Laughlin Civic Center
1:30 p.m.	Cambridge Glass Co. Workers Reunion	National Cambridge Collectors, Inc. Museum

# CONVENTION 1994

by Mark A. Nye, Convention Chairman

The Convention Registration Desk will open Thursday morning, June 23, at the Best Western Motel. The 1994 Convention will begin that day, June 23, with the First Annual NCC Golf Tournament, the Fenton Tour and, in the evening, the Pool Party. Printed elsewhere in this issue is a preliminary schedule of all Convention events. It is a tentative schedule and subject to change; however, any changes would probably be in event times. The final schedule will be in the Convention Registration Packet.

Our banquet speaker this year will be Mr. J. W. Courter. He is a noted authority on Aladdin lamps and on the inventor of Crown Tuscan and similar colors for other companies, Henry T. Hellmers. Mr. Courter's topic will be "The Colorful Career of Henry Hellmers."

While there will be no NCC charge for the golf tournament, there will be a greens fee of \$25 that includes your cart. However, the winner will receive a piece of Cambridge glass worth at least \$25.

The Saturday Morning Continental Breakfast has been eliminated. Only a few people attended this function last year, and therefore the decision was made to drop it. As in the past, there will be coffee available at the Flea Market and we are hoping to have coffee available at the Best Western Saturday morning between 8:00 and 9:00 a.m.

The Fenton Tour will not be a formal bus type tour. The cost of renting a bus prevents such an outing. Members wishing to tour Fenton as a group will be asked to car pool and there will be a designated group leader. Arrangements will be made with Fenton Art Glass Company to receive the group and conduct the tour. We will also arrange for a Dutch treat lunch. Adequate time will be allowed for the factory tour, browsing in the gift shop, lunch, (not necessarily in that order) and returning to Cambridge in time for dinner and the pool party.

Similar arrangements will be made for the Friday tours of the Boyd Crystal Art Glass and Mosser factories in Cambridge.

It is the plan to have an audio program Thursday afternoon consisting of at least one or two tapes of previous Convention speakers. Final plans for this are pending awaiting a review of the available tapes. Watch for

details of this event next month.

Friday afternoon, there will be a program presented by Mark Nye dealing with Cambridge trade journal advertising during the 1920s. Saturday afternoon, Willard Kolb will present a seminar on Cambridge by Imperial. Willard is quite knowledgeable about both companies and this seminar is a "Don't Miss" event. More on these programs next month.

The Souvenir Booklet will definitely be a part of the Convention Registration Packet. It will also be available for purchase after the Convention by members unable to attend but who would like a copy nevertheless. Money realized from the sale of the Souvenir Booklet will go into the Museum Operating Fund. We will provide more information on this in the next issue.

As I write this (late February), there has been no response regarding the possibility of a Roaring Twenties Costume Party Friday Night nor have I heard from any Charleston dancers. Surely someone who is coming to Convention can dance the Charleston and would give us a demonstration Friday Evening.

See you in June.

## CONTACT PERSONS

In the months ahead, many members will wish to contact various Chairmen of Convention related activities. We include a list of the Chairpersons, all of whom may be contacted through the NCC PO Box or by calling the numbers provided.

### Convention Chairman

Mark Nye  
(517) 592-6200

### Antique Show Chairman

Mary Beth Hackett  
(614) 885-2726

### Flea Market Chairman & Golf Tournament Coordinator

Mike Arent  
(614) 439-4582

# COFFEE WITH CAMBRIDGE AT THE CONVENTION

by J. D. Hanes

The Museum Interior Committee has agreed to again host the Coffee with Cambridge at this year's Convention. As most of you know, last year we did not have this event due to the road construction. Many of you seemed to have missed it, so it is back by popular request.

For those of you who have not attended the Convention, Coffee with Cambridge is a light breakfast of donuts, coffee and orange juice held at the Museum. It gives you a chance to visit the Museum and see our wonderful displays. All of the members of the Museum Interior Committee as well as others who are knowledgeable about Cambridge Glass will be on hand to answer your questions. It is a very informal event.

The Museum Interior Committee is asking for your help. We have a very limited budget. This is an event we do not charge for in the Convention package. Therefore, we would gladly accept donations of cash to help

defray the cost. \$100.00 would really help. Of course if we get more than that, we could have a wider selection of pastries. We will note in the Convention packet the name of the donor or donors who wish to help underwrite this. Please send a letter to the club post office box if you can help us with this event.

## MARK YOUR CALENDAR!

**Saturday, April 30**

We will have a Work Day in the Paper Room at the Museum. If you can be in the Cambridge area that weekend and donate time to this effort, please contact J. D. Hanes at the Museum and let him know. WE WILL TRAIN!

**Saturday, May 7**

(Rain date May 14)

We need people to help rework the flower beds at the Museum. If you can help with this project, wear old clothes and come prepared for a day of work and fellowship with your fellow members. NO EXPERIENCE NECESSARY!

## ROBERT W. RILEY

PO Box 4180

Springfield, MA 01101

8-12 PM EST (413) 739-3669 P & I Extra

### CLEAR/ETCHED

C90 Individual salt & pepper	45
P1937 Pristine 10 oz goblets (set of 4)	48
Arcadia 3 footed covered candy	55
#3 Mount Vernon 10 oz footed tumbler (set of 6)	50
#27 Mount Vernon 3 oz wine (set of 6)	45
#2 Mount Vernon 6½ oz tall sherbet (set of 4)	25
1402/17 Tally-Ho sauce boat w/ladle, etch Ye Olde Ivy	22
3121 Rose Point 5½" blown comport	50
1009 6" Everglade vase	35

### NEARCUT

2635 9" Fernland bowl, D shape	25
2636 9" sunflower bowl, E shape	25
2636 sunflower spooner	22
2695 deep oval orange bowl	40
2699 8" Buzz Saw bowl, C shape	25
2760 Daisy 6½" footed banana	22

2760 Daisy 24 oz decanter & stopper	75
2834 5½ oz bottle horn	45
2860 Lexington 8" banquet bowl	30

### COLORS

3400/93 Amethyst 5¼" ivy ball	45
119 Amethyst 7" basket	75
317 Amethyst 5 oz Georgian tumbler (4)	ea 10
1066 Amber 5½" comport, optic bowl, clear stem & foot	35
317 Emerald 5 oz Georgian tumbler (4)	ea 10
119 Forest Green 7" basket	75
Community/2800 Helio 8½" candlesticks	90
1066 Royal Blue 3½ oz cocktail, clear stem & foot (set of 4)	80
1337 Royal Blue cigarette holder	60
319/B/2 Smoke Georgian basket, clear handle	75

---

---

# Classified

---

---

**WANTED TO BUY:** Rose Point #3106 stems and swans. Write price and description. **Nancy & Jim Finley**, 711 West Broadway, Sedalia, MO 65301. Phone: (816) 826-5032 or 827-0101.

**GLASS EPERGNES WANTED:** New York City epergne collector seeking epergnes of any origin. Particularly desirous of unusual shapes, colors, those with hanging baskets or tulips, and any which are of definite American manufacture. Send photos only: **Ann Aikens**, 810 7th Ave, 36th floor, New York, NY 10019. Phone (212) 830-2072. Fax (212) 830-5199.

**FOR SALE:** Cambridge Rosepoint #3500 stems: (5) 1 oz cordials, \$60 each; (4) 2½ oz wines, \$55 each; (7) oyster cocktails, \$32 each. (3) #3121 6 oz tall sherberts, \$25 each. Items in mint condition. VISA/MC welcome. Postage & insurance extra. **Table Top Shoppe**, 509 Bres, Monroec, LA 71201. Phone (318) 388-2605.

**WANTED:** 3" swans. Any kind. Will buy, or swap for your wants. **Joe Bourque**, PO Box 1524, Salem, NH 03079-1146.

**FOR SALE:** Rose Point #3121 stems: (9) 10 oz water (2 chipped), (8) 3 oz cocktails, (9) 6 oz tall sherberts (2 chipped), (1) 12 oz water. \$610 for all. Ivy balls Amythest balls #1066 stems \$50 each. Diane (4) cups (3) saucers, #147 marmalade sterling lid base, #3400/1240 bowl, (8) 8½" plates, (1) 6" plate, (2) sm plates scratched, Portia (3) cups (4) saucers. \$295 for all. Chantilly #98 cocktail shaker metal top \$90, Lorna Amber gold trim with tongs ice bucket \$85. Royal Blue #3500/57 candy with lid \$125, (1) #188 Caprice 2 oz tumbler \$60. Call **Ginny** (609) 652-9579 after 5 PM EST. P&I extra.

**CAMBRIDGE BLUE CAPRICE FOR SALE:** (8) cups, (2) saucers, (3) sets individual creamers & sugars, (1) large set creamer & sugar, (1) medium set of creamer & sugar, (2) oval trays for creamer & sugar, (3) 5" ashtrays, (1) large triangular ashtray with (2) smaller, (1) handled tray for salt & pepper, (8) #300

low sherberts (1 nicked). \$650 for all. PIX, Check held. After 5 PM, (609) 652-9579.

**FOR SALE:** (2) booklets given away & about Cambridge Glassware. 1953 35 pages mint condition \$10 each. **J. Murray**, 4 Chapel St, Union Springs, NY. Phone (315) 889-5156.

**FOR SALE:** (12) each goblets, iced teas, sherberts, wine, cordial - 1942 Belfast rock crystal. Make offer: **L. Kahn**, 34 Saddle Ln, Roslyn Heights, NY 11577. UPS & insurance extra.

---

---

## ADDITIONAL MOTEL INFORMATION

Clare Inn - Bed & Breakfast, 633 Upland Road, Cambridge, OH 43725 (614) 439-1178. 11 rooms available prices range from \$55-85, depending upon type of room, single or master suite.

---

---

## President's Circle

---

---

In appreciation for and in recognition of their contribution of glassware to the National Cambridge Collector's Annual Auction, the first members of the President's Circle were presented with their certificates at the Quarterly Meeting, Friday, March 4.

Frank and Vicki Wollenhaupt, Kelvin Moore, Tarzan Decl and Herman Clark were present to receive their certificates, while Don Matchett was presented with his on Saturday.

You can join this select group by donating glass for the Mini-auction at the Convention.



President Joy McAdden presents President's Circle certificate to Herman Clark (left) while certificate designer, Rick Jones, looks on.



## INVENTORY CLEARANCE SALE

(All Prices Each)

Cup Plates - Crystal, Cobalt, Amethyst or Teal	4.00
Scotty Dog Book Ends - Ebony Frosted, marked '1979 NCC'	15.00
Eagle Book Ends - Cobalt Blue	30.00
NCC Convention Favors:	
1980 Windsor Paperweight	5.00
1982 Gold Paperweight	5.00
1983 Blue Georgian Tumbler	5.00
1984 Amber Georgian Tumbler	5.00
1985 Pink Georgian Tumbler	5.00
1986 Gold Georgian Tumbler	5.00
1987 Light Blue Nearcut Martha Punch Cup	5.00
1988 Cobalt Cambridge Square Cigarette Holder	8.00
1989 Teal Mt. Vernon Cordial	8.00
1990 Pink Mt. Vernon Cordial	8.00
1991 Cobalt Mt. Vernon Cordial	8.00
1992 Ebony Mt. Vernon Cordial	8.00
1993 Light Green Caprice Ash Tray	7.00

Items by Cambridge Buff's Study Group:	
Lapel pins, black & gold	1.00
Tie tacks, black & gold	1.00

**Postage & Insurance Extra**  
Ohio Residents Add 6½% Sales Tax

**National Cambridge Collectors, Inc.**  
PO Box 416  
Cambridge, OH 43725-0416

## ADDITIONAL BOOKS FOR SALE

*By the Degenhart Paperweight and Glass Museum*

- **Reflections**  
45 pages, histories of all glass factories in  
Guernsey County, Ohio  
Paperback (includes postage) . . . . . \$5.00

*By Hector Bolitho  
& the Jamestown Glasshouse Foundation*

- **The Glass House - Jamestown Virginia**  
32 pages giving history and restoration of the  
first glasshouse in America  
Paperback (includes postage) . . . . . \$1.50

## The **DAZE** Inc.

**SPECIAL OFFER**  
to NCC friends  
**\$2.00 OFF**  
the 1 year subscription price  
when on this form or copy of it.

The Original National monthly newspaper dedicated to the buying, selling and collecting of colored glassware and china including Depression Glass and the Elegant Glass (Cambridge, Heisey, Fostoria, etc.) We educate and inform you each month with feature articles by top notch columnists, readers "finds", club happenings, show news and a multitude of ads. Find those missing pieces to your 30s, 40s, or 50s pattern. Can't identify it? Perhaps we can help "keep up with what's happening" with a subscription to the DAZE. Buy, sell or trade from the convenience of your easy chair.

Name \_\_\_\_\_  
Street \_\_\_\_\_  
City \_\_\_\_\_  
State \_\_\_\_\_ Zip \_\_\_\_\_  
[ ] 1 year \$21.00 [ ] 2 years \$40.00 [ ] \$2.00 Single Copy

Exp. Date \_\_\_\_\_ Card No. \_\_\_\_\_  
Signature \_\_\_\_\_

**Orders to:**  
**The Daze, Inc., Box 57, Otisville, MI 48463**  
Please allow 30 days for your first issue - Canadian Subscribers, add \$1 00 per year and subscribe by charge card only! This Special Offer may not be combined with any other special offer  
Offer Expires December 31, 1994

## 1994 FOURTEENTH ANNUAL *Fostoria Glass* Society CONVENTION SHOW & SALE "Fostoria: The Early Years" DELF NORONA MUSEUM Eighth Street & Jefferson Avenue Moundsville, West Virginia

<b>Friday, June 3, 1994</b>	<b>Premiere Admission \$6.00</b>
Premiere Show and Sale	6:00 P.M. - 9:00 P.M.
<b>Saturday, June 4, 1994</b>	<b>General Admission \$3.00</b>
Show and Sale	11:00 A.M. - 5:00 P.M.
Glass Auction	6:00 P.M.
Marshall County Fairgrounds 12th Street, Moundsville, W. Va.	
<b>Sunday, June 5, 1994</b>	
Flea Market	10:00 A.M. - 2:00 P.M.
Show and Sale	11:00 A.M. - 4:00 P.M.

### Moundsville Chapter Flea Market June 5, 1994

Set-Up 8:00 A.M. \$15 Per Couple Fee  
Early Buyer Fee \$15 Per Couple  
Free Admission at 10:00 A.M.  
Contact Ralph Wright — (304) 845-2748 or  
Jim Robinson — (304) 845-6085



For More Information Contact:  
**Fostoria Glass Society of America, Inc.**  
P.O. Box 826 Moundsville, W. Va. 26041  
or Call (304) 737-2006



# ISAACS ANTIQUES



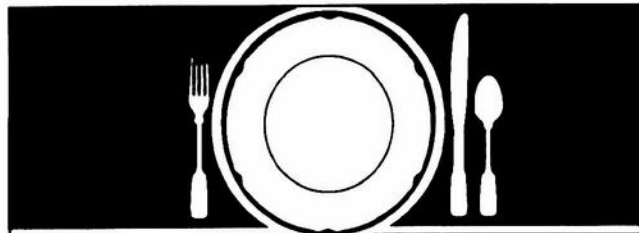
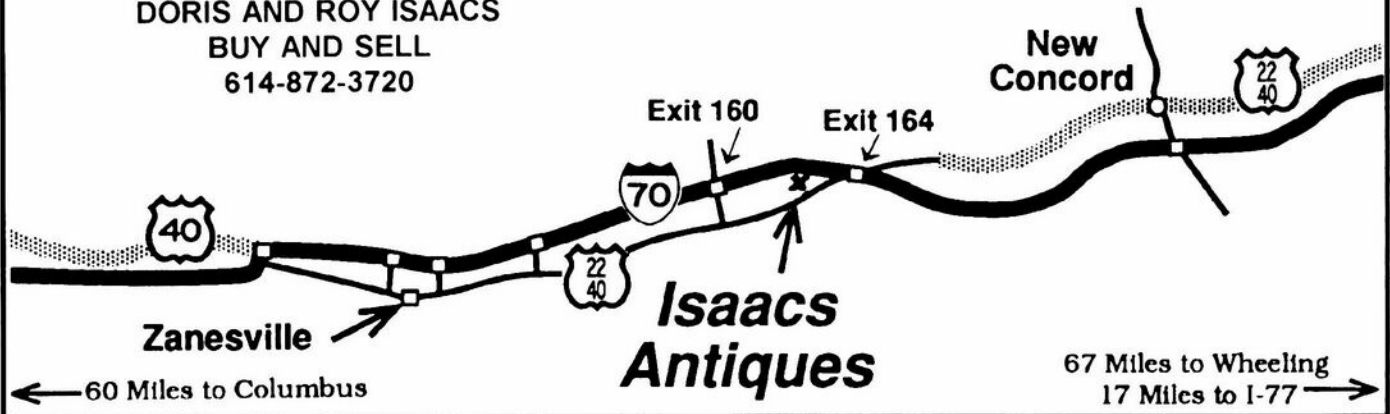
WE FEATURE GLASSWARE OF: CAMBRIDGE,  
HEISEY, FENTON & FOSTORIA  
Plus Art Pottery & a General Line of Antiques

DORIS AND ROY ISAACS  
BUY AND SELL  
614-872-3720

7525 East Pike  
Norwich, Ohio 43767  
614-872-3720

In East Pike Antique Complex - Rt. 40,  
One Mile West of I-70 Norwich Exit #164

Hours 10 - 5:30 Mon. - Sat.  
12 - 5:30 Sun.  
Open Year Round



## How to Find Those Missing Pieces.

The world's largest source of discontinued and obsolete crystal -- as well as china and flatware -- Replacements, Ltd., buys and sells over 36,000 different patterns.

If you need a piece or several pieces to add to your collection ... or if you'd like to sell some unneeded extras ... call or write us. We can provide you with a complete printout of available pieces in your pattern. Or we'll let you know our prices for the pieces you wish to sell.

Replacements, Ltd.: a 100,000 square foot facility; 1.4 million pieces; over 600,000 satisfied customers. Contact us, or come see our showroom. Let us help you complete your collection ... or maybe you'll help add to ours.

## REPLACEMENTS, LTD.

Call (919) 697-3000, FAX (919) 697-3100, or write:  
1089 Knox Road • P. O. Box 26029, Dept. C • Greensboro, NC 27420

OVER 6800 CAMBRIDGE PIECES

## WE CLEAN CLOUDY GLASS!

### \*\* SATISFACTION GUARANTEED \*\*

YES, IT IS TRUE THAT WE REALLY CAN RESTORE THE INTERIOR OF YOUR CRUET, VASE, DECANTER AND MOST OTHER INTERNALLY ETCHED ITEMS BACK TO NEAR ORIGINAL CONDITION!

WE DO NOT OIL, WAX OR COVER UP THE SICKNESS IN ANY WAY! WE ACTUALLY REMOVE IT.

NO ITEMS ARE TOO SICK TO CLEAN! IF WE CANNOT CLEAN YOUR ITEM TO MEET YOUR SATISFACTION, THE CLEANING IS FREE!

WE ARE SO CONFIDENT IN OUR SERVICE THAT WE ASK THAT YOU SEND NO MONEY. WHEN WE RETURN YOUR ITEM A BILL WILL BE ENCLOSED FOR THE POSTAGE & CLEANING. IF YOU ARE HAPPY, PLEASE SEND PAYMENT; IF NOT, RETURN THE BILL MARKED "NOT SATISFIED".

PLEASE ALLOW 6-8 WEEKS FOR REDELIVERY OF MOST ITEMS. ALL GLASS IS HANDLED AND CLEANED AT YOUR RISK. SOME VERY CLOUDY ITEMS MAY TAKE SEVERAL ADDITIONAL WEEKS.

CRUET	\$20.00	COCKTAIL SHAKER	\$30.00
COLOGNE	\$20.00	SALT SHAKER (SINGLE)	\$15.00
WATER BOTTLE	\$30.00	SALT SHAKER (PAIR)	\$25.00
DECANTER	\$30.00	CRUSHED FRUIT JAR	\$30.00
VASES (UNDER 12 IN.)	\$25.00	LAVENDER JAR	\$20-30.00

ALL OTHERS WRITE FOR QUOTE

SHIP TO: CARLISLE & ASSOCIATES  
28220 LAMONG ROAD, DEPT. C  
SHERIDAN IN 46069  
(317) 758-5767 AFTER 6:00 P.M.

# DEALERS



# DIRECTORY

NOTE: When writing to the Dealers listed here, please enclose a SASE!

<p><b>DAUGHERTY'S ANTIQUES</b>  <b>Jerry and Shirley</b>                      Antiques and Collectibles * Mostly Glass                      Shows &amp; Mail Orders 2515 Cheshire No.                      402-423-7426 Evenings Lincoln NE 68512</p>	<p><b>"HAPPINESS IS"</b>  <b>Buddy and Kathy Stultz</b>                      3106 Warren Court, Glen Allen, VA 23060                      804-672-8102                      Specializing in American Made Glass                      We Buy &amp; Sell, Shows &amp; Mail Order</p>	<p><b>THE MUTED SWAN ANTIQUES</b>                      5486 Peachtree Rd. Chamblee, GA 30341                      Heart of Chamblee Antique Row                      Specializing in                      Cambridge, Heisey and Fostoria                      Bill &amp; Pat Miller 404-451-7620</p>
<p><b>MILBRA'S CRYSTAL MATCHING</b>                      P.O. Box 363, Rio Vista, TX 76093                      Milbra Long 817-645-6066                      FOSTORIA * CAMBRIDGE * HEISEY                      TIFFIN, LENOX, OTHERS  <b>BUY AND SELL</b></p>	<p><b>WATKINS</b>                      (Fine Quality)  <b>CAMBRIDGE GLASS SHOP</b>                      1429 Marquand Ave. (Corner of Woodlawn)                      Cambridge, OH 614-432-4460 Lana Watkins</p>	<p><b>ARMORY ANTIQUES</b>                      168 West Main Street                      Plain City, OH 43064  <b>QUALITY THINGS</b>                      Cambridge, Heisey, China, Silver, Furniture                      Mon-Sat 10-5 VISA/MC 614-873-4890</p>
<p><b>THE GLASS URN</b>                      456 West Main Street, Suite G                      Mesa, AZ 85201 602-833-2702                      Mail Order Shows Open Shop                      CAMBRIDGE, FOSTORIA, HEISEY, ETC.</p>	<p><b>ANTIQUES ON THE MALL</b>  <b>SPECIALIZING IN CAMBRIDGE GLASS</b>                      Bogart's - Bldg #3 - Norwich, OH                      Virginia Bennett 614-432-4483                      64183 Warne Drive, Cambridge, OH 43725</p>	<p><b>GATEWAY ANTIQUE MALL, INC.</b>                      JUST NW OF MINNEAPOLIS-ST PAUL, MN                      NE Corner Intersection of I-94/101, Rogers, MN                      (Look for our High Sign)                      50 Dealers 7 Days, 10-6 612-428-8286                      ELAINE STORCK, DIRECTOR</p>
<p><b>ETTELMAN'S DISCONTINUED                      CHINA &amp; CRYSTAL</b>                      Cambridge a Speciality                      P.O.Box 6491-CB Corpus Christi TX 78466                      Phone 512-888-8391 Include S.A.S.E.</p>	<p><b>D &amp; D ANTIQUES</b>                      Columbus, Ohio                      Dick Slifko SHOWS ONLY</p>	<p><b>RONI SIONAKIDES</b>                      6565 W. Herbison Rd. DeWitt, MI 48820                      517-669-5981                      Fostoria, Tiffin, Duncan, Cambridge</p>
<p><b>THE GLASS CUPBOARD</b>                      P. O. Box 652                      West End, North Carolina 27376                      Marcia Ellis Cambridge, Duncan, Heisey                      910-673-2884 Shows, Mail Order</p>	<p><b>JUDY'S ANTIQUES</b>                      Judy Bennett                      422 S. Ninth Street (Corner of Jefferson)                      Cambridge, Ohio 43725                      BUYING Ph.614-432-5855 SELLING  <b>CAMBRIDGE GLASS MY SPECIALTY</b></p>	<p><i><b>YOU CAN ADVERTISE YOUR                      ANTIQUE SHOP HERE!</b></i></p>
<p><b>ELEGANT GLASSWARE</b>  <b>Barbara &amp; Cindy Brock</b>                      Rt. 1, Box 66AC, Callands, VA 24530                      804-724-6762                      Cambridge - Heisey - Duncan - Fostoria</p>	<p><b>GREEN ACRES FARM</b>                      2678 Hazelton Etna Rd., Pataskala, OH 43062                      (State Route 310 North)                      Sat &amp; Sun 1-7 PM 614-927-1882                      Antiques, Crystal Glass and Collectibles</p>	<p><b>CRYSTAL LADY</b>                      1817 Vinton St., Omaha, NE 68108  <b>Joann D. Hagerty</b>                      Bus. 402-341-0643 Res. 402-391-6730                      Specializing in Elegant Glass &amp; Collectibles</p>
<p><i><b>YOU CAN ADVERTISE YOUR                      ANTIQUE SHOP HERE!</b></i></p>	<p><b>FLORENCE SOLITO</b>                      54 Old Stafford Rd, Tolland CT 06084                      Stock All Elegant Glassware                      Mail Order Since 1978                      Send Wants                      203-872-3294 Satisfaction Guaranteed</p>	<p><i><b>YOU CAN ADVERTISE YOUR                      ANTIQUE SHOP HERE!</b></i></p>
<p><i><b>YOU CAN ADVERTISE YOUR                      ANTIQUE SHOP HERE!</b></i></p>	<p><b>REMEMBRANCES</b>                      7597 Daphne Dr., No. Syracuse NY 13212                      Shirley S. Ladouceur 315-458-5297                      ANTIQUES and COLLECTIBLES                      MAIL ORDER SHOWS APPOINTMENTS</p>	<p><b>MARGARET LANE ANTIQUES</b>                      2 E. Main St., New Concord, OH 43762                      Lynn Welker 614-826-7414                      Cambridge Glass Matching Service                      Hours Mon-Fri 10-12AM, 1-5PM or by Appointment</p>
<p><b>GLASS RESTORATION</b>                      BRILLIANT DON &amp; LYNNE                      CRYSTAL WORMLAND                      ELEGANT MT. CLEMENS, MICH                      DEPRESSION 313-468-3519</p>	<p><i><b>YOU CAN ADVERTISE YOUR                      ANTIQUE SHOP HERE!</b></i></p>	<p><b>HELEN &amp; JIM KENNON</b>                      Heisey, Cambridge, Fostoria, Duncan,                      Imperial, Fenton, Tiffin                      P.O. Box 114, Brookville, OH 45309                      PH: 513-833-5406 SHOWS ONLY</p>



June 24, 25, 26, 1994



### The National Cambridge Collectors

Present their 19th Annual  
Antique Show and Sale  
& 21st Annual NCC Convention

**Pritchard Laughlin Civic Center**  
Interstate 70- Exit 176 --1/2 Mile East on Route 40  
Cambridge, Ohio

#### New Hours for 1994

**Friday June 24 - PREVIEW - 4:30 PM to 7:30 PM**

Admission \$5.00

**Saturday June 25 - 11:00 AM to 5:30 PM**

Admission \$2.50

**Sunday June 26 - 11:00 AM to 4:00 PM**

Admission \$2.50

Featuring Cambridge and other fine glassware including Heisey, Imperial,  
Fenton, Duncan, Tiffin and others.

All proceeds benefit the National Cambridge Collectors Museum of Cambridge Glass

Other events open to the public include seminars,  
a glass identification session, and a flea market.

For more information telephone the  
Museum of Cambridge Glass at (614) 432-4245



### 18th ANNUAL NATIONAL IMPERIAL GLASS COLLECTORS' SOCIETY, INC. CONVENTION

**BELMONT TECHNICAL COLLEGE**  
(Four miles west of Hampton Inn - I-70 Exit 213)

#### SHOW & SALE - - Slag Displays Open to Public

Saturday, June 4 1:00 p.m. to 5:00 p.m.

Sunday, June 5 12:00 p.m. to 4:00 p.m.

Admission: \$2.00 Donation

#### SEMINARS - - Open to Public

"Glass of Yesteryears" - Slag Glass by Imperial

Presented by DON JENNINGS - Saturday, June 4 - 9 a.m. to 10 a.m.

Former Imperial Glass Employees

Sunday, June 5, 10 a.m. to 11:30 a.m.

Glass I.D. - Sunday, June 5 - 12:30 p.m. to 1:30 p.m.

Guest: Teri Steel, Editor/Publisher "THE DAZE"

**HAMPTON INN/STONE CRAB RESTAURANT**  
St. Clairsville, Ohio

#### BANQUET - - Open to Public

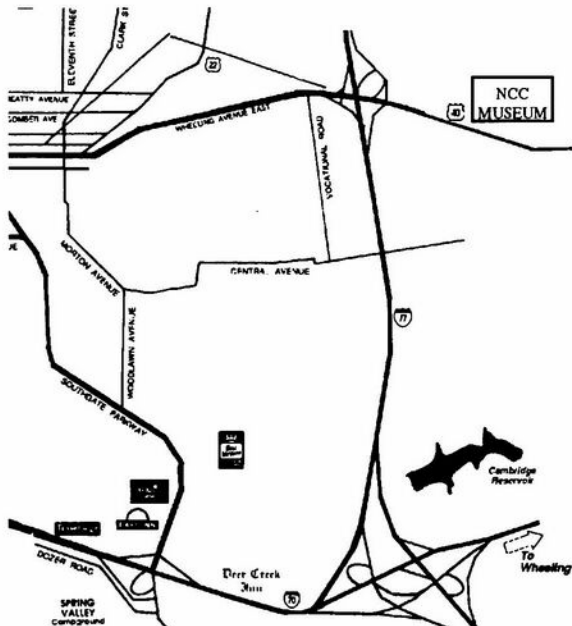
Must have reservations! Saturday, June 5 - 6:30 p.m.

Speaker: Mr. E. Ward Russell

1st President & President Emeritus of N.I.G.C.S.

\*\*\*\*\*

P.O. BOX 534 - BELLAIRE, OHIO 43906  
(410) 995-1254 • (216) 442-0279 • (703) 430-5460



#### NCC Museum of Cambridge Glass

The museum is located on U.S. Route 40, one-eight mile east of I-77 near Cambridge. Hours: 9 a.m. to 4 p.m., Wednesday through Saturday; noon to 4 p.m., Sunday (March through October). Phone 614-432-4245.

Closed Mondays, Tuesdays, Easter and the 4th of July.

#### Membership Renewal Notice

This is your last issue of the *CRYSTAL BALL*, if the date on your address label reads 4/94.

*Please renew now!*

National Cambridge Collectors, Inc.  
P.O. Box 416, Cambridge, Ohio 43725-0416

NON PROFIT  
ORGANIZATION  
U. S. POSTAGE  
PAID  
Dayton, OH  
Permit #974

FORWARDING AND RETURN  
POSTAGE GUARANTEED

PLEASE DELIVER PROMPTLY, DATED MATERIAL.

