



Cambridge Crystal Ball

Published monthly by National Cambridge Collectors, Inc.
to encourage and report the discovery of the elegant and boundless product of the
Cambridge Glass Company of Cambridge, Ohio

Issue No. 257

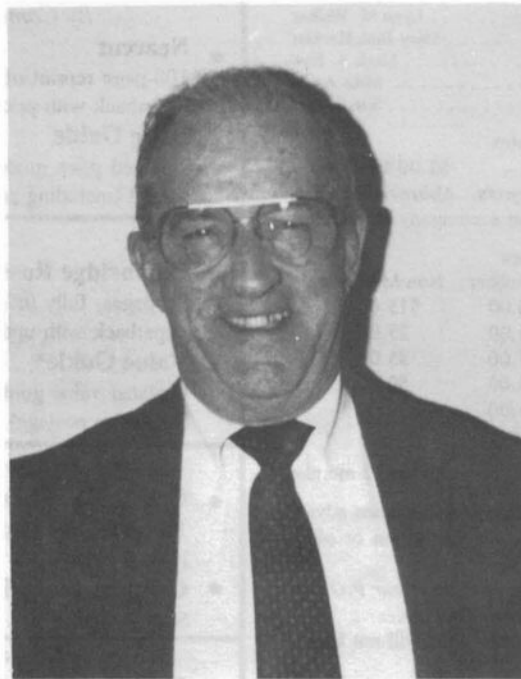
September 1994

NCC Members Lose Good Friend Doyle C. Hanes

Doyle C. Hanes, 72, of Cambridge, Ohio died unexpectedly Friday, August 5, 1994 at Guernsey Memorial Hospital.

He was born October 23, 1921 at Barnesville, son of the late Dempsey P. and Mary C. Hanes.

He was a former employee of the former Darby Oil Co., Law Tractor Sales and retired from the Bureau of Motor Vehicles. He was a member of the First United Methodist Church and a World War II Army veteran. He was a member of American Legion Post No. 84, the Odd Fellows, Lodge #632 of the Free and Accepted Masons, past Wing II chairman of GMH Auxiliary and a member of National Imperial Glass Collectors.



He leaves a stepmother, Mildred Hanes of Florida; a son, Jeffrey "J. D." Hanes of Cambridge, NCC Corresponding Secretary, Museum Interior Chairman and Co-Chair of the Museum Expansion/Relocation Committee; three sisters, Ann Burgess of Cambridge, Ruth Crabtree of Barnesville and Martha Wetstone of Pittsburgh, Pennsylvania; four brothers, Tom Hanes and Dutch Hanes, both of Cambridge, Dennis Hanes of Lake Worth, Florida, and Larry Hanes of Miami, Florida; and several nieces and nephews.

Mr. Hanes was preceded in death by his wife, Geraldine "Gerry" E. Hanes, in 1986; and three brothers.

He was a Board member of National Cambridge Collectors and served on the Nominating, Auction, Convention, Flea Market and Non-Glass committees and as Chairman of the Museum Exterior Committee to which he devoted many hours.

ers.

Visitation was from 2 to 4 p.m. and 7 to 9 p.m. Sunday, August 7 at Bundy-Law Funeral Home where services were held at 11 a.m. Monday, August 8 with Dr. Terry Litton officiating. Burial was at Northwood Cemetery with military graveside rites by the Guernsey County Veterans Council.

Cambridge CRYSTAL BALL

Official Publication of National Cambridge Collectors, Inc. a nonprofit corporation with tax exempt status. Published once a month for the benefit of its members. All rights reserved; reproduction in whole or in part without written permission of NCC and the author is prohibited. Membership is available for individual members at \$17 per year and additional members (12 years of age and residing in household) at \$3 each. \$12.00 of the \$17.00 annual dues is for a 1 year subscription to the Cambridge CRYSTAL BALL. All members have voting rights, but only one CRYSTAL BALL will be mailed per household. Foreign mailings subject to a postage surcharge. Back issues of the CRYSTAL BALL are available (beginning with Issue No. 1, May 1973) for members only. Cost: \$1.00 each or 12 issues for \$10.00.

1993-94 Officers & Committee Chairpersons

President	Joy R. McFadden
Vice-President	Mark A. Nye
Secretary	Richard Jones
Treasurer	David B. Rankin
Sergeant-at-Arms	Cynthia A. Arent
Acquisitions	Joe Andrejcek
Budget & Finance	David B. Rankin
By-Laws	Charles Upton
Membership	Jeff Ross
Museum Expansion/Relocation	Willard Kolb, J. D. Hanes
Museum--Facilities	Doyle Hanes
Museum--Interior	J. D. Hanes
Non-Glass Items	Judy Momirov, Tarzan Deel
Nominating	Mark A. Nye
Program	Willard Kolb
Project	Tarzan Deel
Publications	Mark A. Nye
Public Relations	Mark A. Nye
Publicity	Cynthia A. Arent
Study Group Advisor	Judy Momirov
1994 Auction	Lynn M. Welker
1994 Antique Show	Mary Beth Hackett
1994 Convention	Mark A. Nye
1994 Flea Market	Mike Arent
CRYSTAL BALL Editor	Sue Rankin

Classified Advertising Rates

10 cents per word \$2.00 Minimum
We cannot mix type size in classified advertisements. Abbreviations and initials will count as words. Payment in full must accompany all ads.

Display Advertising Rates

(Camera-ready ads preferred)	Members	Non-Members
1/8 page	\$10.00	\$15.00
1/4 page	15.00	25.00
1/2 page	25.00	35.00
3/4 page	35.00	50.00
Full page	45.00	60.00

Dealers Directory

Six-line maximum \$24.00 for 12 months

Cambridge CRYSTAL BALL assumes no responsibility for items advertised and will not be responsible for errors in price, description or other information.

Advertising copy, articles, club news and notices must be in our P.O. Box by the 5th of each month to assure publication in our next issue.

Paid advertisements containing reproductions or new glass will not knowingly be accepted for publication.

Opinions or information stated in any signed article or letter printed in the CRYSTAL BALL are those of the authors and may or may not agree with National Cambridge Collectors, Inc. The Editor reserves the right to refuse and to edit any material submitted for publication to conform with the editorial style of the CRYSTAL BALL.

Please Address All Correspondence to:

National Cambridge Collectors, Inc.
P.O. Box 416, Cambridge, Ohio 43725-0416
President -- Joy R. McFadden 614/885-2726
Secretary -- Richard Jones 914/631-1656
Editor -- Sue Rankin 513/833-4626 Phone & Fax
NCC Museum /J. D. Hanes -- 614/432-4245 Phone & Fax

Please notify us immediately of any change in your address.

Please enclose an SASE when requesting information.

CAMBRIDGE GLASS BOOKS FOR SALE

By National Cambridge Collectors, Inc.

- **Colors in Cambridge Glass ***
128 pages, 60 color plates, fully indexed
Hardbound with price guide. \$19.95
 - **1930-34 Cambridge Glass Company Catalog Reprint ***
250-page reprint of original catalog
Paperback with price guide. \$14.95
 - **1949-53 Cambridge Glass Company Catalog Reprint ***
300-page reprint of original catalog
Paperback with price guide. \$14.95
 - **1956-58 Cambridge Glass Company Catalog Reprint ***
164-page reprint of original catalog
Paperback. \$6.95
- * For NCC members only, the above publications are available at a 10 percent discount.

By Bill and Phyllis Smith

- **Cambridge Glass 1927-1929**
66-page reprint of original catalog
Paperback w/identification guide. \$7.95

By Cambridge Buffs Study Group

- **Nearcut**
108-page reprint of 1910 Cambridge catalog
Paperback with price guide. \$9.95
- **Price Guide**
Updated price guide for Nearcut Catalog reprint (including postage). \$3.00

By Mark A. Nye

- **Cambridge Rose Point**
94 pages, fully indexed
Paperback with updated value guide. \$12.95
- **Value Guide**
Updated value guide for Rose Point book (including postage). \$5.00

By Mary, Lyle and Lynn Welker

- **Cambridge Glass Company**
120 pages of reprints from eight old catalogs
Paperback. \$10.00
- **Cambridge, Ohio Glass in Color II**
Spiralbound. \$5.95

By Harold and Judy Bennett

- **1903 Cambridge Glass Company Catalog Reprint**
106-page reprint of an original catalog
Paperback. \$7.50

Address your orders to:

Books
National Cambridge Collectors, Inc.
P.O. Box 416
Cambridge, OH 43725-0416
Please add postage and handling to your order (first book, \$2.00; each additional book, 50 cents). Ohio residents add 6½ percent state sales tax.

Dealer discounts available - please write!

A FRIEND

Every club member is precious to this organization. Some days that fact comes into focus more clearly than at other times. Today, is one of those days as we've just learned of the passing of long-time member and Director Doyle Hanes, a true friend to NCC. Doyle was member #3450, he joined the Club in 1986 and was first elected to the board in 1989.

Doyle Hanes was Chairman of the Museum Exterior Committee, an often thankless position. Faced with limited financial resources for professional help and quality equipment; Doyle found ways to keep up our Museum property. He often toiled outside on the hot summer days and recruited friends to help with mowing, exterior landscaping and rubbish removal. Finding recruits was not always easy.

"A gentle man with a heart of gold," that's how I'd describe Doyle Hanes. He took pride in helping with glass mold organization, the building of the paper room, getting the tables from the Storage Building to the Civic Center at Convention time, getting the place in order for our August Quarterly Meeting and Picnic, and dozens of things I'm sure I don't even know about. He treated the Storage Building as though it was his baby.

"Unsung hero." I'm not sure I know what that term means, but I know one when I see one. I'd put Doyle Hanes high on that list. In his own quiet way, he has touched my life as he has so many other members of NCC. He was ALWAYS there to lend a helping hand, no conditions, no complaints, always a smile on his face and a kind and friendly remark. What more can we ask for in life? I don't know. Perhaps more time with Doyle Hanes. Sadly, that's not possible now.

Our August meeting at the Museum just won't be the same. I can't imagine entering the Storage Building and not seeing Doyle there. Life goes on. Our Club goes on. But, let's pause for an extra moment at the Picnic and take time to remember a very special member, a very special man, a very special friend . . . Doyle Hanes.

Respectfully submitted,
Richard D. Jones
Recording Secretary for the Board of Directors
August 5, 1994

President's Message

It is with a great deal of sadness that I inform you of the death of Board member, Doyle Hanes. Doyle passed away Friday, August 5.

The words "good and decent man" come to mind when thinking of Doyle.

Doyle was the kind of man whose many contributions to this club often went unnoticed because Doyle worked quietly and wholeheartedly behind the scenes.

I speak for all the board members when I say he will be sorely missed. My deepest sympathies to J. D., Doyle's immediate family, as I feel we have lost a member of our family also.

Best wishes to three other club members who are hopefully on the mend, Mike Arent, Tony Allen and Willard Kolb. I wish for all, speedy recoveries.

Please forgive the briefness of my article, hope to see you all at the picnic.



IN MEMORIAM

JACOB STREBLER

Our deepest sympathy is extended to members Mike and Lisa Strebler and daughter, Sarah, of Columbia, South Carolina, on the death of their 5 year old son and brother, Jacob.

Virginia Houston called with word of this tragedy on July 14, 1994 just as the August issue of the CRYSTAL BALL was completed. The funeral was held Saturday, July 16, 1994 with burial in Tallmadge, Ohio.

Smokers' Items

by Mark A. Nye
Part IV

On August 1, 1940, Cambridge issued a revised index to the January 1940 catalog. This index included references to pages not in the original catalog. Sometimes the additional pages were numbered in numerical order. At other times, Cambridge found it necessary to add a letter suffix to the existing number of the preceding page. The latter occurred in the Smokers' Items section. Issued between January 1940 and August 1940 was one new page with the number 426A. Sometime later, possibly in early 1941, another new page, this one designated 426B, was issued.

Most of the items on these pages were new ones; that is, they had not appeared in previous catalogs and were placed in production shortly before the issuance of the new pages. Previously seen items are the P.721 ash tray and the 1456 ash tray.

Two ash trays, Pristine 717 and Pristine 716 appear for the first time on a page captioned "MISCELLANEOUS" issued in June 1941

A supplemental page to the 1940 price list says the items on page 426A came in Crystal only. No price list for page 426B is known nor is one for the June 1941 Miscellaneous page. However, the items on these two pages were probably not made in color.

The balance of this article consists of the mold order log book entries for many of the items seen on the two Smokers' Items pages.

"Pristine 726 - 5 inch star ash tray approximately the size of the #3 star candlestick. With groove on each point to hold cigarette. Make plaster model."

"Pristine 729 - 4 inch ash tray. Make new ring and plunger to fit 388 ash tray. Sides to be 1/8" thicker. To be made with four cigar rests with three cigarette rests between the cigar rests. Depth of cigarette rests to be half the thickness of a cigarette."

"1625 - 1-3/4 inch cigarette lighter. Make new plunger and bottom plate for the #6 1-3/4 inch lamp break ball mold to fit metal cigarette lighter. Two molds."

"1626 - 1-3/4 inch cigarette lighter. Make new plunger and bottom plates for the #1 1-3/4 inch lamp break ball mold to fit metal cigarette lighter. Two molds."

"Pristine 731 - 6-1/2 inch star ash tray, as per wood model. Cigar rests to be shallow like the one filled in with modelers wax."

"1720 - 3 inch ash tray, made from the 1457 - 3 inch, 2 compartment. Change the 1457 plunger to make a grooved partition to serve as cigarette rest."

"1721 - 4 inch ash tray, 4 compartment. Make from the 1458 - 4 inch. Change the 1458 plunger to make 4 partitions to act as cigarette rests."

"Pristine 716 - 5 inch oval ash tray. 4 cigar rests. Make from old 127 oval. Remove star from bottom and make plain ring bottom. Get mold into shop and see Mr. Orme for height." Author's Note: While there is no other entry for this item, the final product as seen in the catalog is a combined ash tray and cigarette lighter. One of the cigar rests was replaced with a hole for a metal lighter. Therefore the mold was different from what this entry states.

"Pristine 717 - 4-3/4 inch round ash tray. Make from the old #32 ash tray. (4 cigar rests as is.) Remove star from bottom and make plain ring bottom. Plunger to be made square. See Mr. Orme."

"Pristine 745 - 3-3/4 inch by 4-3/4 inch by 1-3/4 inch deep cigarette box and cover, like model. Bead around bottom edge. Interior of box to be rounded. See W. L. Orme. [Deadline January 1941]"

"Pristine 746 - 5-1/2 inch oval cigarette box and cover. Like plaster model. [Deadline January 1941]"

"1676 eagle ash tray. New plunger for the #730 ash tray with raised place in the center to stick the eagle figure."

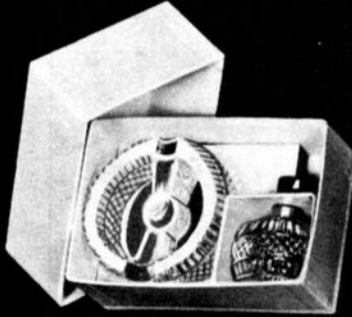
Continued on Page 14 - NYE



The Cambridge Glass Company



SMOKERS ITEMS



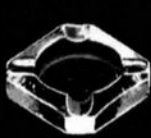
1625/1624—2 pc. Cigarette Lighter Set
(in Display Box)



1624—3½ in. Ash Tray



1626/722—2 pc. Cigarette Lighter Set
(in Display Box)



P. 721—2½ in.
Ash Tray



1626

Cigarette Lighter



P. 721—2½ in.
Ash Tray

1626/721—3 pc. Lighter Set
(Packed in Display Box)



1456—2½ in.
Ash Tray



1625

Cigarette Lighter



1456—2½ in.
Ash Tray

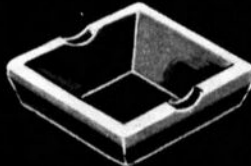
1625/1456—3 pc. Lighter Set
(Packed in Display Box)



P. 731—6½ in. Star Ash Tray



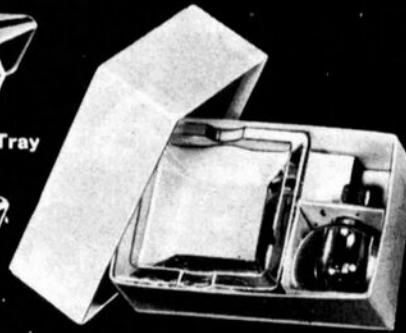
P. 726—5 in. Star Ash Tray



P. 725—3½ in. Ash Tray



P. 727—4 in.
Star Ash Tray



1626/725—2 pc. Cigarette Lighter Set
(in Display Box)



P. 722—3½ in. Ash Tray



P. 729—4 in. Ash Tray



P. 724 Ash Tray
2½ x 3½ in.



1720—3 in.
Ash Tray



1721—4 in.
Ash Tray



P. 730—6 in. Ash Tray



643—2 pc. Ash Receiver



643—2 pc. Ash Receiver (showing parts)



Cambridge, Ohio - - - U. S. A.



SMOKERS ITEMS



P735—6 in. Ash Tray



P734—4½ in. Ash Tray



P733—3 in. Ash Tray



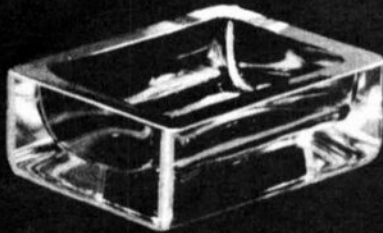
P732—3½ in. Sq. Ash Tray



Mt. Vernon 69
Cigarette Box & Cover
6 in. Oval



P733/734/735 Ash Tray Nest



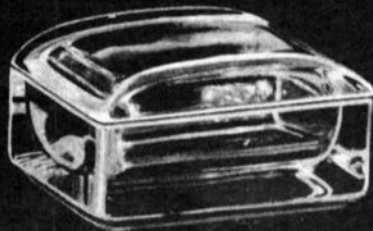
P745—3½ x 4½ in. Ash Tray, Cut Top



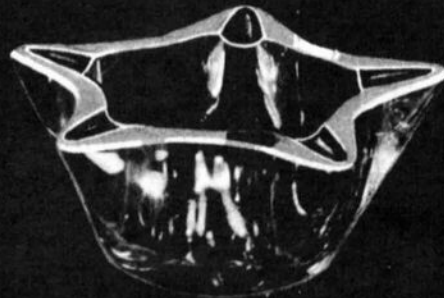
1676—6 in. Ash Tray
Eagle Handle



P746—4 x 5 in. Cigaret Box & Cover
(Heavy Weight)



P745—3½ x 4½ in Cigaret Box & Cover
(Heavy Weight)



P736—7 in. Star Ash Tray, Cut Top

June 1941



MISCELLANEOUS



1476—Salt & Pepper Shaker W/ Glass Top Cut Flower



1476—Salt & Pepper Shaker W/ Glass Top



1680—Salt & Pepper Shaker W/ Glass Top Cut all over or uncut



P.717—5 In. Ash Tray



1627—3 In Coaster also 1628—3 1/2 In Coaster (Made to Stack)



P.716—5 In. Oval Ash Tray with Cigarette Lighter



3775—Goblet Etched Chantilly



3725—Goblet Etched Wildflower



12 oz. Zombie Glass



P.75—54 oz. Jug (Revised Top)



400—14 oz. Tumbler (Solid Ball Bottom)



400—12 oz. Tumbler (Solid Ball Bottom)



400—9 oz. Tumbler (Solid Ball Bottom)



400—5 oz. Tumbler (Solid Ball Bottom)



400—3 oz. Cocktail (Solid Ball Bottom)



400—6 oz. Fruit Salad (Solid Ball Bottom)

Cambridge History From News Articles

by Kurt Tostenson

CAMBRIDGE GLASS CO. SHOW ROOMS HIGHLY PRAISED

[From The Cambridge Daily Jeffersonian April 14, 1917]

"After many weeks of arduous toil the Cambridge Glass Company has its new show room at 49 West Twenty-Third Street in readiness and it not only ranks among the handmade glass display rooms in America, but also reflects great credit on President Arthur J. Bennett and local manager D. King Irwin.

The general decorative scheme is Italian Renaissance, the woodwork being weathered oak. The wall fixtures are all mirror backed and fitted with plate glass shelves on oxidized supports. The wall tables under those fixtures, as well as the separate tables on the floor have legs beautifully carved in Italian Renaissance style. The wall fixtures are somewhat over 7 feet in height. Above the wall is done in a rich cream tone, with the ceiling in white. The floor is of hardwood. A few of the table fixtures are cloth covered, while two beautiful round tables are entirely in weathered oak finish.

The samples are most attractively and systematically arranged to show them off to best advantage and for the buyer's convenience. Pressed ware, blown ware and fancy specialties are kept entirely separate, while in the rear a separate room, are the druggist sundries samples, etc. A packing room is also walled off close to the freight elevators.

In one corner of the show room on the Twenty-Third street front is Mr. Irwin's private office, next to which is the general office. Both of these are fitted with mahogany furniture. The show rooms which are located on the fifth floor of the building have a frontage on Twenty-third street of 50 feet, and a depth of 86 feet, the exceptional width providing splendid natural illumination. Artificial illumination is furnished by celestial globes etched to correspond with the show room fixtures. These are hung from the ceiling by handsome oxidized chains."

The above is a clipping from the "Pottery Glass and Brass Salesman" magazine of New York City in April issue, which speaks well for the New York office of the Cambridge Glass Company.

RECOGNIZED LONG SERVICE

[From The Daily Jeffersonian March 27, 1954]

W. L. Orme, Sr., president of the Cambridge Glass Co., is shown presenting Friday a wrist watch to Orie J. Mosser, 700 Highland Ave., factory manager, in observance of his long tenure of service to the company. Mr. Mosser completed 50 years service with the company on Jan. 1.

Mr. Mosser, who is 68, started work at the Cambridge plant on New Year's day of 1904 as a skilled tradesman. He began learning the "gathering" trade when but 12 years old in a Marietta glass company.

Employed at the Cambridge Glass as a "gather," Mr. Mosser worked his way through several departments, and was subsequently made night foreman. He has been plant manager of the hot metal department for the past 36 years.

Official recognition of his long tenure of service was made by company officials Friday when they presented him with the watch. The glass company, which is one of the oldest manufacturing firms in Cambridge, has similarly honored eight other employees since 1951 in recognition of half a century of service.

CAMBRIDGE GLASS ENDS SALES MEETING IN CITY

Luncheon is held At Beverly Hills

[From The Daily Jeffersonian June 2, 1956]

The Cambridge Glass Co. closed Saturday its annual sales meeting with a luncheon at the Beverly Hills Restaurant. The meeting which had been in progress since Wednesday, ended with a note of much enthusiasm about the immediate, as well as long range, future of the company and its position in the field of domestic homemade glass.

Theodore Korn, president of the company, reviewed the past years' activities critically and outlined a broad program particularly regarding the aggressive and courageous development of new methods of merchandising, and additional avenues of distribution. The pro-

gram was received by the company's representatives wholeheartedly, and all pledged to perform their assigned parts forcefully to insure its success.

President Korn announced to his organization at the sales meeting the just completed merger of the Cambridge Glass Co., major stockholder in the company, into the Morrison Brass Corp., Ltd., of Toronto, Canada, where four companies were joined together into one organization. He stressed that each will lend the other further strength in many areas. The Morrison Brass Corp. has for many years been listed on the Toronto Stock Exchange and is a well reputed financially strong corporation, Mr. Korn pointed out.

While it is too early to make any sort of prediction, Mr. Korn pointed out the favorable effect this merger may prove to have upon the value of Cambridge Glass Corporation stock. He stated, "I will not be surprised if in time our stockholders will benefit by this merger through considerable term capital gains on their investment in the stock of our company." He emphasized that this change will have no affect upon the operations of the Cambridge Glass Company, and will cause no change in operating policy or operating management personal, and he looks forward to the future with a great deal of enhanced confidence.

The meeting continued through Friday and Saturday morning and wound up with this noon's luncheon, at which time representative Ralph Cross of Columbus, Ga., was present with a gold watch as the salesman who has opened the largest number of new accounts in 1956. At the same time, Mr. Korn announced that another watch will be given for the same achievement at the next annual sales meeting.

The sales meeting was run on the keynote that no member of this organization minimizes the problems which a domestic hand glass company faces, but also that the teamwork, deep understanding, and sincerity, coupled with the will-to-do which so strongly exists in this organization continues to provide a rich source of further creative development of an old industry and will insure continued growth. "The success of the Cambridge Glass Company," stated Mr. Korn, "will further focus national attention upon our All-American City."

GLASS COMPANY NAMES HOSPITAL

[From The Daily Jeffersonian April 1, 1957]

St. Francis Hospital has been selected by the Cam-

bridge Glass Co. for hospitalization of its patients, it was announced by Theodore Korn, company president.

Mr. Korn stated that Dr. Paul O. Huth has been designated as physician for glass company employes and E. J. Alexander as chiropodist. He pointed out that use of St. Francis Hospital will be made in all emergency cases in which the glass company is involved.

PLANT MANAGER RESIGNS AT CAMBRIDGE GLASS CO.

[From The Daily Jeffersonian April 3, 1957]

Resignation of O. J. Mosser as plant manager of the Cambridge Glass Co. after 53 years continuous service with the company was announced Wednesday. His successor is his son, Thomas Mosser.

The resignation became effective last Saturday. He had served as plant manager since shortly after World War I.

Mr. Mosser is recognized as one of the most experienced men in the Ohio glassware industry. The Cambridge Glass Co. was formed in 1902 and he became employed by the company two years later in the capacity of gathering boy.

He received numerous promotions and his first executive position was night foreman, which he held five years. When the company operated a glass plant at Byesville during World War I, he became its manager. Following the war, Mr. Mosser became manager of the Cambridge plant when the two operations were combined in this city. He had continuously held that position until his retirement from association with the company.

During his over a half-century of work in the glassware industry, he became experienced in all phases of production and Cambridge glassware gained a worldwide reputation for extraordinary and expert workmanship.

"I have no intention of retiring as long as my health is as good as it is at present," Mr. Mosser declared Wednesday. "I have several propositions under consideration, however, I have not yet made a decision."

Thomas Mosser has been associated with the Cambridge Glass Co. 12 years. Under his father's guidance, he has received experience invaluable to him in his new position.

REORGANIZATION OF CAMBRIDGE GLASS CO. PROPOSED IN COURT ACTION AT COLUMBUS

Trustee Is Appointed For Plant

[From The Daily Jeffersonian July 31, 1958]

Reorganization of the Cambridge Glass Co. to force a showdown with figures federal authorities charge are involved in the nation's underworld syndicate was proposed in an application filed in U. S. district court at Columbus Wednesday afternoon.

As a result of the court action, the Cambridge Glass Co. is expected to resume early operations. It was reliably reported Thursday to have a backlog of \$65,000 in orders and the plan is to get the plant back into operation and fill these orders as quickly as possible.

Judge Mel Underwood considered the application and appointed Atty. Clarence Graham of Zanesville as trustee. Under the latter's supervision, efforts were started Thursday to get the Cambridge plant back into production without delay.

The alleged underworld syndicate figure involved is said by federal officers to be Larry Knohl of Long Beach, L.I., New York, who was a grand jury witness in the notorious gangland chief slaying of Anastasia in a New York barbershop several months ago. He claims to control a majority of the Cambridge Glass Co. stock.

The reorganization application was filed in U. S. court by five Cambridge directors of the company, Miss Martha Mitchell, acting president, Walter O'Malley, Thomas Walshe Jr., W. H. Driggs and Atty. Frank C. Leyshon. Atty. Leyshon represented them in court Wednesday afternoon at Columbus.

Cambridge Glass Co. has had a hectic career since it was acquired in the fall of 1954 by Sidney Albert, Akron super industrial stock manipulator. Albert has been under investigation in stock transactions in numerous industrial companies which he acquired title to.

The methods used in the stock transactions have been a closely guarded secret, however, just before creditors closed in on Albert, control of the Cambridge Glass Co., was reputedly transferred to Morrison Brass Corp. of Canada. Just how Larry Knohl got mixed up in the deal and the manner in which he gained control of a majority of Cambridge Glass Co. stock is not clear to investigators, however, he has represented himself as

the person to make all decisions concerning matters of the company.

The local directors of the company charge that, because of the questionable character of Knohl, financial assistance could not be obtained except from him and that was extremely difficult. He would not provide the funds to meet the demands of creditors and there were times when the payrolls were unpaid, directors of the company charge. The climax that precipitated the court action came when he failed to carry out his promise to make \$20,000 available to the company several days ago.

Knohl visited Cambridge some months ago and rode around in a big automobile equipped with a telephone. It was reliably reported his chauffeur served as body-guard. He took over by ousting Theodore Korn as president and general manager of the company.

The Ohio Fuel Gas Co. shut off the gas at the plant some time ago because of unpaid bills, however, sufficient gas was obtained from local production sources to protect the plant equipment. Telephone service to the plant was also cut off for similar reasons. An effort was made Thursday to have both services restored at once.

Atty. Charles Moore, Cambridge, will represent the trustees and Atty. Leyshon the company.

Judge Underwood referred the case to special master Gail H. Butt, referee in bankruptcy, Columbus.

Picnic

by Paul White

They call it a quarterly meeting
An excuse to sit and talk
And roll out all the memories
of Convention with the flock.
What we got at the Auction -
Bargains at the show
and those hellacious prices!!!
Now a picnic. Let's go.

We Get Letters

Dear Sue:

My grandmother's punch bowl set is Near Cut, the Buzz Saw pattern. I also have her covered Buss Saw patterned butter dish and name cup, as well as my Mother's and aunt's Near Cut name cups. When I look at these exquisite old treasures, I'm just amazed how truly beautiful they are and how old and how rare. I could never consider selling these pieces at some future time and I feel the best thing to do with any Near Cut and Rare piece of Cambridge Glass, is to place it in the safekeeping of the Cambridge Glass Museum.

It is indeed heartwarming as a Cambridge Glass enthusiast and collector to see all the recent donations and acquisitions listed in the August issue. It is my feeling we must become "diligent" in efforts of Cambridge Glass preservation particularly in Rarities and Near Cut. There is so much of Cambridge Glass that is unique and special as well. I know all are doing a marvelous job, but I feel a "concern" in regard to preservation. No doubt many, many pieces were made but "time" is fleeting and glass is breakable and chipable. It might be wise to have numerous duplicates of more common and/or "available" examples and items as well for assurance sake so to speak

A great deal of Cambridge Glass belongs in the Museum for preservation sake and that is why I will give my collection to the Museum at a future time. In my collection are pieces belonging to my cousin, my mother, aunt and grandmother. I will place them with the Museum in their names so that they may be represented. I read of so many interesting and unique discoveries via the CRYSTAL BALL, and perhaps at some future time they will find their new home in the Cambridge Glass Museum.

I would like to suggest that a fund be activated and built for the purpose of purchasing Near Cut pieces and Rares when they are made available, to be placed in the Cambridge Glass Museum.

When the committee was formed for the discussion of Re-location and a New Museum, I asked to be a part of it and sent them my input. I felt grants might be a possibility. The Smithsonian Institute often features Cambridge Glass and other glass reproductions in their catalog. I had thought perhaps they could be of help as well as other such avenues. I also felt the State of Ohio

might offer some assistance in these matters. I would have thought they might have helped save the famous factory. It is so sad the factory itself is gone.

I feel a larger Museum for a growing collection and "preservation" of Cambridge Glass is a must. Cambridge Glass is an "art form" and can be displayed to a considerable advantage with "display and lighting techniques." We might consider a new Museum of modern contemporary architecture as well. Mountains have been climbed before. We can refer to the old adage, "Where there is a will there is a way." Pulling and working together this inspiration can indeed become a reality.

The famous Huntington Library, Museums and Gardens are located in San Marino, Calif. The Huntington offers for sale a catalog showing the paintings, sculptures, etc., and the benefactors' names. A good idea for Cambridge Glass. The Huntington is a "centre" and our future Cambridge Glass Museum can be a "centre" for the State of Ohio. It will take more work and a great deal of funding, but when that goal is reached we can all have a tremendous amount of satisfaction that our time and effort and money was well spent, for we have left a "legacy" for mankind. And in the rolling, green hills of Ohio.

Future docents might be heard to say "We will take you on a journey through a kaleidoscope of color. Colors, displays, form and design, to capture and fill your imagination for all time. From beginning to end, from Near Cut to Rose Point and so much more. You will see glass, handmade glass as the true art form it is and was meant to be, come into its own. Cambridge Glass is indeed the finest glass ever made. Enjoy your journey."

Bonnie J. Quaintance
California

Dear Bonnie:

The two letters that you sent which I have combined above, raise some pertinent issues. Many members are not aware that much of the glass displayed in the Museum is on loan from private collections. I know of several people who have remembered National Cambridge Collectors in their wills. Many loaned pieces, and others, will in time become the property of NCC. The Museum does own a small but important collection that has either been donated by members or purchased by the Acquisitions Committee.

The Acquisitions Committee, chaired by Joe Andrej-

cak, is constantly on the lookout for pieces to add to the Museum collection. Their efforts are funded by contributions from members and others interested in adding to our collection. Many of these contributions are earmarked by the donors specifically for the acquisition of glass and/or other Cambridge memorabilia. In addition, the Board at its discretion, may add to this fund.

Each year the committee spends less than authorized. The reasons being that members do not contact the committee when they see something that they think the Museum might want, or if they do contact the committee, the seller is asking too much for the piece. If you or any member sees a piece of Cambridge glass for sale that you think should be in the Museum, please contact the Acquisitions committee. The committee members are Joe Andrejcek, Lynn Welker and J.D. Hanes. J.D. can be contacted at the Museum and the phone number is included in every CRYSTAL BALL.

Your remarks, about the possibilities and opportunities provided by a new and/or expanded Museum, echo the sentiments of many members. Space has always been a problem. The Museum Expansion/Relocation committee is diligently exploring several possibilities. I'm certain that in time they will be able to present to the Board and membership a plan to expand or acquire more space. But, in all fairness, most museums, even the richest, have space problems and I'm certain that we will never have too much. Unfortunately, it is also true that Museums do not make money. They always need to be subsidized. A larger museum will also require a larger subsidy.

The possibility of obtaining State or Federal funding for our efforts is impossibly slim. Cambridge is located in a part of the State that is considered economically depressed and any government funds available are targeted toward jobs, education, health and human services. Therefore, this is something that we must undertake on our own, relying in most part on the generosity, hard work and talents of our members. Private grants cannot be sought until specific plans are on the table.

We currently have some funds earmarked for expansion or relocation, due largely to the two year "Committed to Cambridge" campaign launched in February 1989. These funds are also augmented by profits from our book sales, auction, antique show and sale, mini-auction at Convention and any other fund raising projects undertaken by the Projects Committee, such as the Prism Sign project.

Donations from members are always welcome and every effort is made to acknowledge them.

Letters are sent to each donor. Donations are listed in the CRYSTAL BALL. For donations of glass, a card is placed along with the piece giving information about the item as well as the name of the donor. Donations given in memory of others are similarly noted.

Remember, National Cambridge Collectors is a (501)(c)(3) organization and contributions are fully tax deductible.

Sue

Dear Sue,

Thanks for addressing our questions in the July newsletter. We took a photo of the "acid" etch signature that you requested, along with some photo's of other unusual finds from our vacation.

One item that we didn't get a chance to photo was a Topaz beverage urn, plate etch 695. It's missing the lid, valve, handles and the base is without the feet. The owners didn't know what it was, but for \$32.00, we couldn't pass it by.

We have enclosed two photos that we have questions on. The first is a signed piece, with an odd gold and enamel treatment. Would you know what the treatment was called? The second is an unsigned center handled sandwich tray. Would you know if it is truly Cambridge, and if so, what the pattern is?

Please thank J. D. Hanes for his information on Imperial's Rose Point etch. We were a bit nervous about our Rose Point finds until he cleared our minds. Thank you and all of the Cambridge newsletter staff for answering all of our questions, no matter how small.

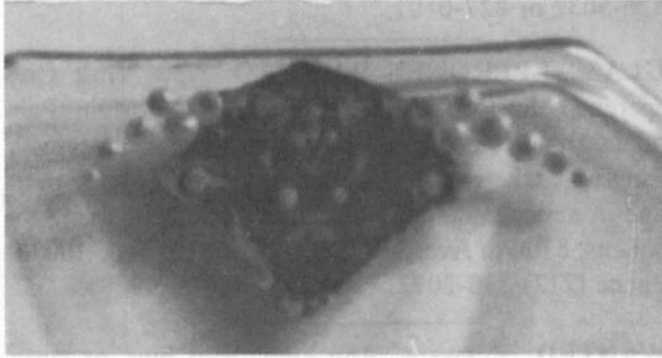
Kathy and Glenn Corbett
California

Dear Kathy and Glenn:

Thank you for sending the photograph of the "acid" signature. We are including a drawing so other members can see what it looks like. Unfortunately, the photo did not have enough contrast to reproduce well. This often happens when photographing glass.



On your first question, we do not recognize this decoration. This may have been done by a decorating company. We have attempted to produce a blow up of one of the five medallions that appear on your Decagon plate. Since it is very hard to see, a verbal description may be in order. Perhaps someone will recognize it and drop us a note.



From the picture it appears to be a completely hand-painted decoration with a black background. It consists of red, blue and gold enamel with light blue dots. The only recognizable feature appears to be a harlequin mask in the top center.

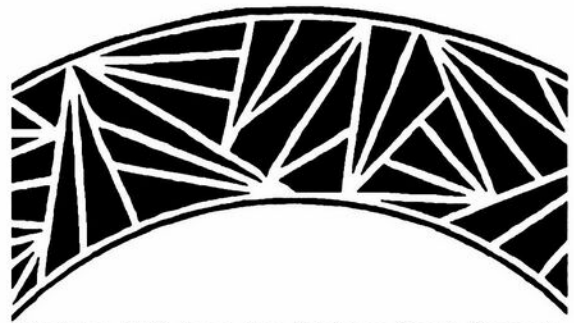
On your second question, we can identify this etching as etching number 729 and the center handled tray is a Cambridge pattern. Coincidentally, had you been able



to attend the Convention this year, you would have seen a print of the original etching plate that was used in a display highlighting etchings of the 1920s.

Thank you for your kind remarks.

Sue



Etching 729 from the Etching Book Project

Dear Sue:

I find I must write a second letter to the column and on a separate subject.

I came across a lamp like the one Ken Rhoads wrote about in the July issue. I found the oriental figure lamp in the fall of 1993 here in California. I fell in love with it and purchased it on the spot.

I feel it is a rare item and it is topaz. Mine too has COPYRIGHT embossed in the glass below the geometric design of base on the figure itself. I just discovered it, thanks to your letter Ken, and then I knew where to look. Before, I had looked underneath the base of lamp and on the metal portion of lamp - but indeed it is on the glass portion in the back.

I also misread the label printed upside down on the "old" light bulb socket. What I took to be universal is actually "Underwriters" upon closer examination. It also says "Portable Lamp" - Inspected - Issue 13578. After "Underwriters" there is a part of label gone and label itself appears to be printed on after missing portion it says "ries, Inc." Part of the wording before "ries" is gone. One might presume it reads "Underwriters Industries, Inc." Issue 13578 might be a good clue, I don't know.

Maybe you can help out?

Bonnie J. Quaintance
California

Dear Bonnie:

We are always delighted when some bit of information published in the CRYSTAL BALL is of help to our members in identifying previously unidentified glass. Since publishing Ken's letter, I was told that one of these lamps was seen with a Gillinder label on the figure. I have not seen the label.

The label you found on the socket is probably that of the "Underwriters Laboratories, Inc." Underwriters Laboratories is still in business inspecting electrical equipment for safety. Their label relates to the electrical parts of the lamp - not the oriental figure.

Sue

Dear NCC Officers and Committee Members:

Thanks to those members who work so hard to make things run so smoothly at the Annual Convention. A special thanks to Mike Arent, who did a wonderful job of seeing to it that the Flea Market vendors were well taken care of. His thoughtfulness and kind attention to our needs was really appreciated. In spite of the weather and a minor altercation with the wind, it was a good market with many buyers. Thanks again, Mike.

Sincerely,
Janice Applegate

UPDATE

Three days after the August issue of the CRYSTAL BALL was mailed, I received a telephone call from Mary Martha Mitchell. She called to provide information to expand our answer to Daniel Miecznikowski's letter regarding the small glass spoons he had purchased along with pieces of Cambridge.

Mary Martha confirmed that the spoons were indeed imported. They were purchased by Cambridge in April 1949 from the Laregsam-Billig Co., 135 West 20th Street, New York City. [Note: She indicated that the spelling of the first word of the company name may be wrong as the handwriting was unclear.]

Cambridge purchased three types of spoons from this company: (1) #626 Marmalade for \$4.80 per gross; (2) #487 Mustard for \$4.20 per gross; and (3) #400 Salt Spoon for \$2.20 per gross. Evidently they came in various colors and many were in two colors.

I want to thank Mary Martha for taking the time to provide this information. I also want to encourage all of you to let us know when you can expand on either an article or an answer to a letter.

Classified

WANTED TO BUY: Hard to find Rose Point, Rose Point #3106 stems, Nude stems and novelty items. Write price and description. **Nancy & Jim Finley**, 711 West Broadway, Sedalia, MO 65301. Phone: (816) 826-5032 or 827-0101.

GLASS EPERGNES WANTED: New York City epergne collector seeking epergnes of any origin. Particularly desirous of unusual shapes, colors, those with hanging baskets or tulips, and any which are of definite American manufacture. Send photos only: **Ann Aikens**, 810 7th Ave, 36th floor, New York, NY 10019. Phone (212) 830-2072. Fax (212) 830-5199.

WANTED: 3" swans. Any kind. Will buy, or swap for your wants. **Joe Bourque**, PO Box 1524, Salem, NH 03079-1146.

Rosepoint #3121 stems, 8 cocktails, 7 water, 7 tall sherbets, ALL \$455.00, all perfect. Pair Rosepoint #1617 Hurricane Lamps, small chip on side at very bottom of each shade. \$285.00 pr. Prices firm. Call **Ginny** after 5 p.m. EST. (609) 652-9579, P.I.X.

Twenty pieces Cambridge. Stemware, plates, bowls; Wildflower pattern. Would like to sell for the best offer, but with the right to refuse. **Altheda** (216) 929-3506.

Caprice Mocha - 4 cups & saucers, 4 luncheon plates, creamer, sugar & 11" footed plate that is scratched. \$215.00 for all. Firm. Call **Ginny** after 5 p.m. EST. (609) 652-9579. P.I.X.

NYE - continued from page 4

"Mount Vernon #69 cigarette box and cover, like plaster model."

"Pristine 736 - 7 inch star ash tray. Make new ring with cigarette rests to fit the #308 candy box bottom. See cut sample. See Orme for depth of rests."

"Mount Vernon 71 - 6 inch oval ash tray. Note: Make new ring with four cigarette rests to fit the Mount Vernon 69 cigarette box."

These entries cover the period from October 1939 for the first to February 1941 for the last.

NATIONAL CAMBRIDGE COLLECTORS, INC.

PRESENTS

Caprice

Just Released. Orders are now being taken. List price is \$19.95 plus \$2.00 for shipping and handling. NCC members may deduct \$2.00 from the book price.

Address your orders to:

National Cambridge Collectors, Inc.
P.O. Box 416
Cambridge, OH 43725-0416

(May be combined with other books order from page 2)

The **DAZE** Inc.

SPECIAL OFFER
to NCC friends
\$2.00 OFF
the 1 year subscription price
when on this form or copy of it.

The Original National monthly newspaper dedicated to the buying, selling and collecting of colored glassware and china including Depression Glass and the Elegant Glass (Cambridge, Heisey, Fostoria, etc.) We educate and inform you each month with feature articles by top notch columnists, readers "finds", club happenings, show news and a multitude of ads. Find those missing pieces to your 30s, 40s, or 50s pattern. Can't identify it? Perhaps we can help "keep up with what's happening" with a subscription to the DAZE. Buy, sell or trade from the convenience of your easy chair.

Name _____
Street _____
City _____
State _____ Zip _____
[] 1 year \$21.00 [] 2 years \$40.00 [] \$2.00 Single Copy

Exp. Date _____ Card No. _____
Signature _____

Orders to:

The Daze, Inc., Box 57, Otisville, MI 48463

Please allow 30 days for your first issue - Canadian Subscribers, add \$1.00 per year and subscribe by charge card only! This Special Offer may not be combined with any other special offer
Offer Expires December 31, 1994

Julie Opack
1815 Berwick Circle
Duluth, Minnesota 55811
(218) 728-5410

Cambridge 3450 Nautilus

Red - 40 oz. Decanter with six	
12 oz. glasses	\$ 250.00
Salt and Pepper	\$ 70.00
Cream	\$ 35.00
Blue - Pitcher	\$ 200.00
Salt and Pepper	\$ 70.00
Green - Salt and Pepper	\$ 45.00
Amethyst - Pitcher	\$ 135.00
14 oz. Decanter	\$ 50.00
Single Shaker	\$ 12.00
Amber - Pitcher	\$ 90.00
28 oz. Decanter	\$ 50.00
Creamer and Sugar	\$ 45.00

3400 Ball Shaped

3400/38 Green Pitcher	\$ 60.00
3400/119 Amber 12 oz. Decanter	\$ 15.00
(2) 3400/99 Amber 6 oz. Oil	\$ 14.00

3400/99 Light Blue	\$ 16.00
3400/96 Crystal 2 oz. Oil	\$ 12.00
(2) 3400/96 Crystal 2 oz. Oil	
with tray	\$ 35.00
3400/92 Amethyst 32 oz. Decanter	\$ 45.00

Rosepoint

Creamer and Sugar with worn	
gold trim	\$ 25.00
(8) 8 inch Salad Plates 3400/62 ea	\$ 18.00
or	all \$ 100.00

Caprice

Crystal small bowl	\$ 12.00
Crystal medium bowl	\$ 15.00
Crystal three part bowl	\$ 18.00

Shipping extra
Call or write

ETTELMAN'S DISCONTINUED CHINA AND CRYSTAL

P. O. Box 6491, Corpus Christi, Texas 78466-6491, (512) 888-8391

Clearance Sale - 10% Off Orders Over \$500.00

Adonis, Tall Sherbet, (4) each	\$ 25.00	Chantilly, # 3625, Cocktail, 3 oz, (14) each	\$ 30.00
Adonis, Low Sherbet, (14) each	\$ 20.00	Chantilly, # 3775, Low Sherbet, 4 1/4", (16) each	\$ 20.00
Adonis, Plate, 8", (1) each	\$ 14.00	Chantilly, # 3775, Tall Sherbet, 5 1/2", (6) each	\$ 20.00
Ambassador, Water, (5); Iced Tea, (3); Sherbet, (14)	\$ 10.00	Chantilly, # 3775, Footed Juice, (2) each	\$ 27.50
Ambassador, Oyster Cocktail, (16) each	\$ 10.00	Chantilly, # 3779, Water, (12) each	\$ 25.00
Ardley, Claret, 4 1/2 oz, (10) each	\$ 20.00	Chantilly, # 3779, Iced Tea, (6) each	\$ 25.00
Ardley, Oyster Cocktail, (1) each	\$ 20.00	Chantilly, # 3779, Sherbet, 6", (14) each	\$ 25.00
Arlington, Water, (1); Ftd. Juice, (4) each	\$ 15.00	Chantilly, # 3779 Footed Tumbler, 5 oz, (4) each	\$ 25.00
Arlington, Oyster Cocktail, (6) each	\$ 15.00	Chantilly, Plate, 6 1/2", No Design in Cnt. (1) each	\$ 18.00
Aurora, Iced Tea, (1) Gold, (1) Clear each	\$ 12.00	Chantilly, Saucer, (5) each	\$ 10.00
Aurora, Sherbet, (1) Yellow each	\$ 12.00	Charm, Water, (7) each	\$ 18.00
Bexley, Water, (4); Iced Tea, (11) each	\$ 15.00	Charmaline, Water, (13); Iced Tea, (14) each	\$ 15.00
Bexley, Tall Sherbet, 5 1/8", (10); Oys. Cock. (12)	\$ 15.00	Charmaline, Tall Sherbet, 5", (16) each	\$ 15.00
Bijou, Water, (10), Sherbet, 5 3/4", (2); 8" Plate	\$ 10.00	Charmaline, Low Sherbet, 4", (8) each	\$ 15.00
Cadet, Sherbet, 5 1/4", (3) each	\$ 10.00	Charmaline, Wine, (5) each	\$ 20.00
Cambridge Rose, Iced Tea, (8) each	\$ 25.00	Charmaline, Plate, 8", (3) each	\$ 8.00
Cambridge Rose, Low Sherbet, 3 3/4", (1) each	\$ 25.00	Cordelia, Iced Tea, (1); Cocktail, 3 oz, (5) each	\$ 25.00
Cambridge Rose, Ftd. Ju., 5 oz, (4); O. C., (7) each	\$ 25.00	Cordelia, Footed Juice, 5 oz, (9) each	\$ 15.00
Cambridge Square, # 3798, Sherbet, (14) each	\$ 17.50	Cordelia, Plate, 7 1/2", (3) each	\$ 10.00
Cambridge Square, # 3798, Cups, (3) each	\$ 15.00	Corinth, Water, (1); Iced Tea, (1) each	\$ 15.00
Cambridge Square, # 3798, Cocktail, (2) each	\$ 17.50	Corinth, Sherbet, (4); Oyster Cocktail, (8) each	\$ 10.00
Cambridge Square, # 3797, Goblet, (16) each	\$ 15.00	Corinth, Plate, 8", (1); 6 1/2", each	\$ 8.00
Cambridge Square, # 3797, Iced Tea, (3) each	\$ 15.00	Daffodil, Sherbet, 6", (3); Sherbet, 4 1/2", (4) each	\$ 27.50
Cambridge Square, # 3797, Sherbet, (2) each	\$ 15.00	Daffodil, Oyster Cocktail, (12) each	\$ 27.50
Caprice, # 300, Water, (4); Sherbet, (14) each	\$ 17.50	Diane, Sherbet, 6 1/4", (8) each	\$ 22.50
Caprice, # 300, Oyster Cocktail, (14) each	\$ 17.50	Diane, Cocktail, 3 oz, 5 7/8", (5) each	\$ 25.00
Caprice, # 300, Wine, (3) each	\$ 32.50	Diane, Underplate, 8" (1) each	\$ 10.00
Caprice, # 301, Water, (5) ea; Juice, (7) each	\$ 20.00	Diane, Plate, 8", (1) each	\$ 16.00
Caprice, # 301, Sherbet, 4 1/2", (7) each	\$ 20.00	Diane, Plate, 6 1/2", Etched Center, (1) each	\$ 14.00
Cascade, Sherbet, (16) each	\$ 15.00	Diane, Plate, 7 1/2", Etched Center, (3) each	\$ 16.00
Cascade, Cocktail, (4) each	\$ 25.00	Doric, Water, (8); Iced Tea, (7); Sherbet, 5", (6)	\$ 20.00
Cascade, Cup & Saucer, (14) each set	\$ 25.00	Dunkirk, Iced Tea, (5) each	\$ 20.00
Castleton, Water, (3); Iced Tea, (6) each	\$ 15.00	Dunkirk, Tall Sherbet, 4 3/4", (1) each	\$ 20.00
Castleton, Sherbet, (4); Ftd. Tumb., 5 oz, (1) each	\$ 20.00	Dunkirk, Low Sherbet, 3 1/2", (3) each	\$ 20.00
Cathedral, Sherbet, (7) each	\$ 15.00	Dunkirk, Footed Tumbler, 10 oz, 5 3/4", (2) each	\$ 20.00
Candlelight, # 3776, Iced Tea, (1) each	\$ 27.50	Dunkirk, Footed Juice, 5 oz, (3) each	\$ 20.00
Candlelight, # 3776, Tall Sherbet, (14) each	\$ 25.00	Festoon, Water, (8); Iced Tea, (14); Sherbet, (14)	\$ 15.00
Candlelight, # 3776, Footed Juice, (4) each	\$ 20.00	Festoon, Plate, 7 1/2", (1) each	\$ 12.00
Candlelight, # 3776, Cocktail, 3 oz, (4) each	\$ 30.00	Flame, Iced Tea, (1) each	\$ 15.00
Candlelight, # 3111, Low Sherbet, (1) each	\$ 25.00	Granada, Water, (5); Iced Tea, (6) each	\$ 20.00
Candlelight, # 3111, Wine, 2 1/2 oz, (14) each	\$ 60.00	Granada, Sherbet, (6); Ftd. Juice, 5 oz, (7) each	\$ 20.00
Candlelight, # 3111, Footed Juice, (14) each	\$ 25.00	Granada, Cocktail, 2 1/2 oz, (6) each	\$ 25.00
Candlelight, # 3111, Oyster Cocktail, (11) each	\$ 25.00	Hanover, Tall Sherbet, 5 1/4", 6 oz, (9) each	\$ 15.00
Candlelight, # 3111, Cocktail, 3 oz, (3) each	\$ 30.00	Heirloom, Sherbet, 6 oz, (15) each	\$ 15.00
Chantilly, # 3600, Water, (12) each	\$ 27.50	Invitation, Goblet, 4 1/2", (17) each	\$ 15.00
Chantilly, # 3600, Tall Sherbet, 6", (10) each	\$ 25.00	Invitation, Footed Tumbler, 3 3/4", (15) each	\$ 15.00
Chantilly, # 3600, Cocktail, 2 1/2 oz, (9)	\$ 32.50	Ivy, Iced Tea, 6", (3); Ftd. Tumbler, 4 1/4" (10) each	\$ 15.00
Chantilly, # 3600, 5 oz Tumbler, 5 oz, (14) each	\$ 27.50	Ivy, Tall Sherbet, 5 1/8", (8) each	\$ 20.00
Chantilly, # 3600, Oyster Cocktail, (11) each	\$ 25.00	Ivy, Plate, 7 1/2", (1) each	\$ 12.00
Chantilly, # 3625, Sherbet, (1) each	\$ 25.00	Jefferson, Clear, Water, (4); Iced Tea, (4) each	\$ 15.00
Chantilly, # 3625, Wine, 2 1/2 oz, (1) each	\$ 35.00	Jefferson, Clear, Sherbet, (11) each	\$ 15.00
Chantilly, # 3625, Footed Tumbler, 5 oz, (16) each	\$ 22.50	Jefferson, Green, Sherbet, (3) each	\$ 18.00

Shipping Charges Additional - VISA and Master Card Accepted

ETTELMAN'S DISCONTINUED CHINA AND CRYSTAL

P. O. Box 6491, Corpus Christi, Texas 78466-6491, (512) 888-8391

Clearance Sale - 10% Off Orders Over \$500.00

Jefferson, Green, Wine, (4) each	\$ 20.00	Rosepoint, # 3121, Low Sherbet, 4 7/8", (2) each	\$ 25.00
Jefferson, Green, Plate, 8", (21) each	\$ 12.00	Rosepoint, # 3500, Tall Sherbet, 6 1/2", (7) each	\$ 32.50
Julliana, Sherbet, (1) each	\$ 15.00	Rosepoint, # 3500, Footed Tumbler, 5 oz, (2) each	\$ 32.50
King Edward, Plate, 8", (1) each	\$ 15.00	Rosepoint, Underplate for Mayo Set, (5) each	\$ 10.00
King George, Footed Tumbler, (13) each	\$ 22.50	Rosepoint by Imperial, # 3121, Iced Tea, (12) each	\$ 27.50
King George, Tall Sherbet, (14) each	\$ 20.00	Rosepoint by Imperial, # 3121, Tall Sherbet, (12) each	\$ 22.50
King George, Plate, 7 1/2", (2) each	\$ 14.00	Roses, Water, (12) each	\$ 12.00
Laurel Wreath, # 3139, Water, (14) each	\$ 18.00	Roses, Iced Tea, (12) each	\$ 12.00
Laurel Wreath, # 3139, Iced Tea, (16) each	\$ 10.00	Roses, Plate, 8", (8) each	\$ 8.00
Laurel Wreath, # 3139, Sherbet, (16) each	\$ 10.00	Roxbury, Low Sherbet, (6) each	\$ 15.00
Laurel Wreath, # 3139, Cocktail, 2 1/2 oz, (2) each	\$ 15.00	Roxbury, Tall Sherbet, (3) each	\$ 15.00
Laurel Wreath, # 3700, Iced Tea, (14) each	\$ 15.00	Roxbury, Cocktail, 3 oz, (7) each	\$ 15.00
Laurel Wreath, # 3700, Sherbet, (16) each	\$ 15.00	Simplicity, Water, (16); Iced Tea, (16) each	\$ 15.00
Laurel Wreath, # 3700, Ftd Tumbler, 10 oz, (8) each	\$ 15.00	Simplicity, Sherbet, (18); Ftd. Juice, 5 oz, (8) each	\$ 15.00
Lexington, Wine, 5 3/4" Tall, 3 1/4" Bowl Dia, (1)	\$ 20.00	Simplicity Shape and Stem - has design of single leaf repeated 3 times - Water, (3); Ftd. Tea, 12 oz, (4); Sherbet, (5) ea \$ 12.00 - Plates, 7 1/2", (3) ea	\$ 8.00
Lily of the Valley, Water, (16) each	\$ 15.00	Sonata, Water, (2); Iced Tea, (12) each	\$ 15.00
Lily of the Valley, Iced Tea, (10) each	\$ 15.00	Sonata, Sherbet, 5 1/4", (13); Sherbet, 4", (8) each	\$ 15.00
Lily of the Valley, Sherbet, (13) each	\$ 15.00	Star, Water, (11); Tall Sherbet, (12) each	\$ 15.00
Lily of the Valley, Footed Juice, 5 oz, (2) each	\$ 15.00	Starlight, Water, (5); Iced Tea, (10) each	\$ 12.00
Lily of the Valley, Oyster Cocktail, (9) each	\$ 15.00	Starlight, Sherbet, (16) each	\$ 12.00
Lynbrook, Water, (16); Iced Tea, (16) each	\$ 15.00	Sweetheart, Water, (8); Iced Tea, (8); Sherbet (3) each	\$ 17.50
Lynbrook, Sherbet, (18); each	\$ 15.00	Tempo, Iced Tea, (9) each	\$ 15.00
Lynbrook, Oyster Cocktail, 3 1/2", (10) each	\$ 15.00	Tempo, Tall Sherbet, 4 3/4", (7) each	\$ 15.00
Lynbrook, Footed Juice, 5 oz, (10) each	\$ 15.00	Tempo, Low Sherbet, (7); Oyster Cocktail, (8) each	\$ 15.00
Magnolia, Sherbet, (5); Cocktail, (13) each	\$ 15.00	Tempo, Footed Tumbler, 5 oz, (8) each	\$ 15.00
Manor, Water, (7); Sherbet, 5", (13) each	\$ 15.00	Tempo, Cocktail, 3 oz, (3) each	\$ 20.00
Manor, Sherbet, 3 1/2", (2); Ftd Juice, 5 oz, (8) each	\$ 15.00	Strathmore, Iced Tea, (4); Oyster Cocktail, (1) each	\$ 15.00
Manor, Cocktail, 3 oz, (3) each	\$ 15.00	Trumpet, Tall Sherbet, 5 3/4", (1) each	\$ 15.00
Manor, Footed Juice, 5 oz, (8) each	\$ 15.00	Trumpet, Cocktail, 5 1/2", (4); Goblet, 6 1/4", (5)	\$ 20.00
Manor, Plate, 8", Scall, (1) each	\$ 10.00	Triumph, Goblet, (16) each	\$ 17.50
Maryland, Sherbet, (18) each	\$ 10.00	Triumph, Footed Tumbler, 12 oz, (1) each	\$ 20.00
Maryland, Sherbet, (7) each	\$ 22.50	Triumph, Sherbet, (16) each	\$ 15.00
Mount Vernon, Water, (1) each	\$ 12.00	Triumph, Wine, (4) each	\$ 25.00
Plaza, Tall Sherbet, (1) each	\$ 10.00	Victory, Water, (6); Sherbet, (4) each	\$ 17.50
Pristine, Water, (4); Sherbet, (2) each	\$ 20.00	Victory, Footed Juice, 6 oz, (3) each	\$ 17.50
Pristine, Footed Juice, 5 oz, (11) each	\$ 15.00	Wedding Band, # 3139, Sherbet, 4 3/4", (9) each	\$ 20.00
Queen Mary, Water, (9); Iced Tea, (8) each	\$ 20.00	Wedding Band, # 3139, Wine, (4) each	\$ 25.00
Queen Mary, Sherbet, (9) each	\$ 20.00	Wedding Band, # 7966, Water, (6) each	\$ 17.50
Radiant Rose, Iced Tea, (9) each	\$ 16.00	Wedding Band, # 7966, Iced Tea, (3) each	\$ 17.50
Radiant Rose, Tall Sherbet, 4 3/4", (17) each	\$ 16.00	Wedding Band, # 7966, Sherbet, 5 3/4", (6) each	\$ 17.50
Radiant Rose, Wine, 3 1/2 oz, (1) each	\$ 25.00	Wedding Band, # 3109, Sherbet, 4 3/4", (5) each	\$ 20.00
Radiant Rose, Plate, 8", (4) each	\$ 10.00	Wedding Band, # 3109, Oys, Cocktail, 3 5/8", (5) each	\$ 20.00
Regency, Tall Sherbet, 7 oz, (7) each	\$ 15.00	Wedding Band, # 3109, Ftd. Tum, 3 3/8", 5 oz, (16) each	\$ 20.00
Regency, Water, (1) each	\$ 22.50	Wedding Band, # 3109, Cocktail, 3 1/2 oz, (4) each	\$ 20.00
Regency, Claret, 4 1/2 oz, 7 3/4", (1) each	\$ 30.00	Wedding Rose, Water, (5) each	\$ 20.00
Rondo, Low Goblet, 6 3/4", (1) each	\$ 20.00	Wedding Rose, Plate, 7 1/2", (1) each	\$ 14.00
Rondo, Sherbet, 4 3/4" (11) each	\$ 25.00	Wheat, Water, (10); Sherbet, (8) each	\$ 20.00
Rondo, Juice/Claret, 5 oz, (12) each	\$ 20.00	Wildflower, Footed Juice, (16) each	\$ 20.00
Rondo, Low Cocktail, 3 3/4", (16) each	\$ 15.00	Wildflower, Oyster Cocktail, (2) each	\$ 25.00
Rosepoint, # 3121, Iced Tea, (5) each	\$ 32.50		
Rosepoint, # 3121, Tall Sherbet, 6 1/4", (12) each	\$ 30.00		
Rosepoint, # 3121, Footed Tumbler, 10 oz, (5) each	\$ 30.00		

Shipping Charges Additional - VISA and Master Card Accepted

ISAACS ANTIQUES



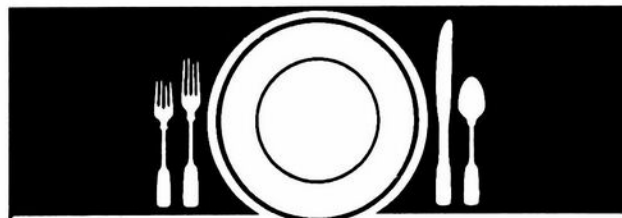
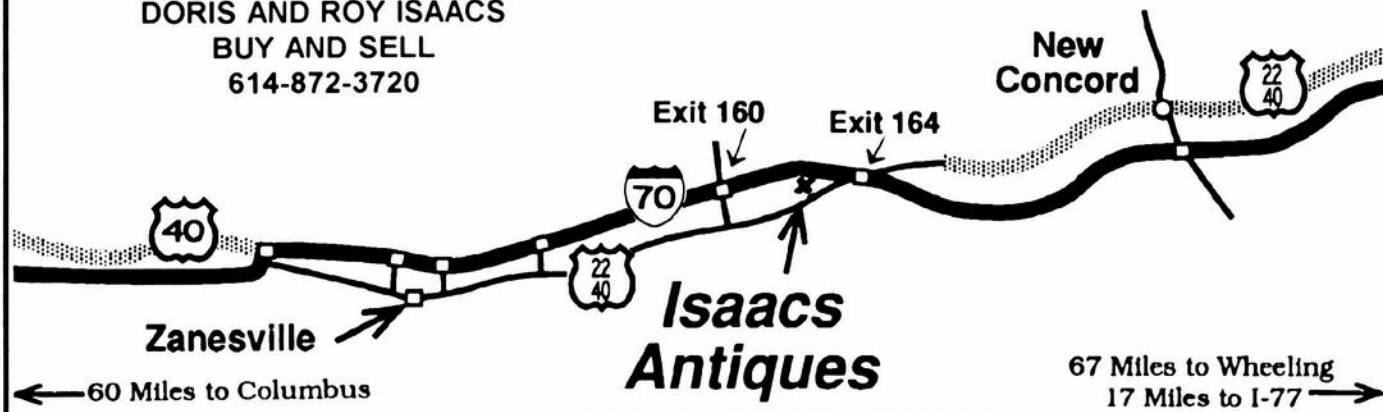
WE FEATURE GLASSWARE OF: CAMBRIDGE,
HEISEY, FENTON & FOSTORIA
Plus Art Pottery & a General Line of Antiques

DORIS AND ROY ISAACS
BUY AND SELL
614-872-3720

7525 East Pike
Norwich, Ohio 43767
614-872-3720

In East Pike Antique Complex - Rt. 40,
One Mile West of I-70 Norwich Exit #164

Hours 10 - 5:30 Mon. - Sat.
12 - 5:30 Sun.
Open Year Round



Are You At Your Wits End?

Can't find the missing pieces
to fill out your pattern?

As the world's largest supplier
of discontinued china, crystal and
flatware, Replacements, Ltd. has
48,000 patterns and 1.5 million pieces.

So don't let it get to you.
Call us or visit our showroom.
Chances are pretty good
we can help you out.

REPLACEMENTS, LTD.

Call 1-800-562-4462 or FAX (910) 697-3100, or write:
1089 Knox Road • PO Box 26029, Dept CB
Greensboro, NC 27420

OVER 6800 CAMBRIDGE PIECES

WE CLEAN CLOUDY GLASS!

** SATISFACTION GUARANTEED **

YES, IT IS TRUE THAT WE REALLY CAN RESTORE THE INTERIOR
OF YOUR CRUET, VASE, DECANTER AND MOST OTHER
INTERNALLY ETCHED ITEMS BACK TO NEAR ORIGINAL
CONDITION!

WE DO NOT OIL, WAX OR COVER UP THE SICKNESS IN ANY WAY!
WE ACTUALLY REMOVE IT.

NO ITEMS ARE TOO SICK TO CLEAN! IF WE CANNOT CLEAN YOUR
ITEM TO MEET YOUR SATISFACTION, THE CLEANING IS FREE!

WE ARE SO CONFIDENT IN OUR SERVICE THAT WE ASK THAT
YOU SEND NO MONEY. WHEN WE RETURN YOUR ITEM A BILL
WILL BE ENCLOSED FOR THE POSTAGE & CLEANING. IF YOU ARE
HAPPY, PLEASE SEND PAYMENT; IF NOT, RETURN THE BILL
MARKED "NOT SATISFIED".

PLEASE ALLOW 6-8 WEEKS FOR REDELIVERY OF MOST ITEMS. ALL
GLASS IS HANDLED AND CLEANED AT YOUR RISK. SOME VERY
CLOUDY ITEMS MAY TAKE SEVERAL ADDITIONAL WEEKS.

CRUET	\$20.00	COCKTAIL SHAKER	\$30.00
COLOGNE	\$20.00	SALT SHAKER (SINGLE)	\$15.00
WATER BOTTLE	\$30.00	SALT SHAKER (PAIR)	\$25.00
DECANTER	\$30.00	CRUSHED FRUIT JAR	\$30.00
VASES (UNDER 12 IN.)	\$25.00	LAVENDER JAR	\$20-30.00

ALL OTHERS WRITE FOR QUOTE

SHIP TO: CARLISLE & ASSOCIATES
28220 LAMONG ROAD, DEPT. C
SHERIDAN IN 46069
(317) 758-5767 AFTER 6:00 P.M.

DEALERS



DIRECTORY

NOTE: When writing to the Dealers listed here, please enclose a SASE!

<p>DAUGHERTY'S ANTIQUES Jerry and Shirley Antiques and Collectibles * Mostly Glass Shows & Mail Orders 2515 Cheshire No. 402-423-7426 Evenings Lincoln NE 68512</p>	<p>"HAPPINESS IS" Buddy and Kathy Stultz 3106 Warren Court, Glen Allen, VA 23060 804-672-8102 Specializing in American Made Glass We Buy & Sell, Shows & Mail Order</p>	<p>THE MUTED SWAN ANTIQUES 5486 Peachtree Rd. Chamblee, GA 30341 Heart of Chamblee Antique Row Specializing in Cambridge, Heisey and Fostoria Bill & Pat Miller 404-451-7620</p>
<p>Milbra's Crystal Buy & Sell Replacement and Matching Specializing in: Cambridge Milbra Long (817) 645-6066 Fostoria Emily Seate (817) 294-9837 Heisey PO Box 363, Rio Vista, TX 76093 and others</p>	<p>WATKINS (Fine Quality) CAMBRIDGE GLASS SHOP 1429 Marquand Ave. (Corner of Woodlawn) Cambridge, OH 614-432-4460 Lana Watkins</p>	<p>ARMORY ANTIQUES 168 West Main Street Plain City, OH 43064 QUALITY THINGS Cambridge, Heisey, China, Silver, Furniture Mon-Sat 10-5 VISA/MC 614-873-4890</p>
<p>THE GLASS URN 456 West Main Street, Suite G Mesa, AZ 85201 602-833-2702 Mail Order Shows Open Shop CAMBRIDGE, FOSTORIA, HEISEY, ETC.</p>	<p>ANTIQUES ON THE MALL SPECIALIZING IN CAMBRIDGE GLASS Bogart's - Bldg #3 - Norwich, OH Virginia Bennett 614-432-4483 64183 Warne Drive, Cambridge, OH 43725</p>	<p>GATEWAY ANTIQUE MALL, INC. JUST NW OF MINNEAPOLIS-ST PAUL, MN Next to Super 8 in Rogers, MN (I-94/101 Intersection) 85 Dealers 7 Days, 10-6 612-428-8286 ELAINE STORCK, DIRECTOR</p>
<p>ETTELMAN'S DISCONTINUED CHINA & CRYSTAL Cambridge a Speciality P.O.Box 6491-CB Corpus Christi TX 78466 Phone 512-888-8391 Include S.A.S.E.</p>	<p>D & D ANTIQUES Columbus, Ohio Dick Slifko SHOWS ONLY</p>	<p>RONI SIONAKIDES 6565 W. Herbison Rd. DeWitt, MI 48820 517-669-5981 Fostoria, Tiffin, Duncan, Cambridge</p>
<p>THE GLASS CUPBOARD P. O. Box 652 West End, North Carolina 27376 Marcia Ellis Cambridge, Duncan, Heisey 910-673-2884 Shows, Mail Order</p>	<p>JUDY'S ANTIQUES Judy Bennett 422 S. Ninth Street (Corner of Jefferson) Cambridge, Ohio 43725 BUYING Ph.614-432-5855 SELLING CAMBRIDGE GLASS MY SPECIALTY</p>	<p>MCKENZIE'S ANTIQUES & COLLECTIBLES 14700 Detroit Avenue Lakewood, Ohio 44107 (216) 521-2652 (216) 221-9862 (216) 348-3127</p>
<p>ELEGANT GLASSWARE Barbara & Cindy Brock Rt. 1, Box 66AC, Callands, VA 24530 804-724-6762 Cambridge - Heisey - Duncan - Fostoria</p>	<p>GREEN ACRES FARM 2678 Hazelton Etna Rd., Pataskala, OH 43062 (State Route 310 North) Sat & Sun 1-7 PM 614-927-1882 Antiques, Crystal Glass and Collectibles</p>	<p>CRYSTAL LADY 1817 Vinton St., Omaha, NE 68108 Joann D. Hagerty Bus. 402-341-0643 Res. 402-391-6730 Specializing in Elegant Glass & Collectibles</p>
<p>ASK Specializing in Cambridge. Wide variety. Booth #14 in the Antique Mall of Boswell 90 Miles south Chicago, right on U.S. 41. 7 days a week 10-5, except Sun. 12-5 (317) 869-5525</p>	<p>FLORENCE SOLITO 54 Old Stafford Rd, Tolland CT 06084 Stock All Elegant Glassware Mail Order Since 1978 Send Wants 203-872-3294 Satisfaction Guaranteed</p>	<p>YOU CAN ADVERTISE YOUR ANTIQUe SHOP HERE!</p>
<p>MICHAEL KRUMME Cambridge * Heisey * Fostoria * Duncan Miller * Paden City New Martinsville * Fenton * Tiffin * Imperial * Morgantown I search - Send detailed want list - all are kept on file PO Box 5542 Santa Monica, CA 90409</p>	<p>REMEMBRANCES 7597 Daphne Dr., No. Syracuse NY 13212 Shirley S. Ladouceur 315-458-5297 ANTIQUES and COLLECTIBLES MAIL ORDER SHOWS APPOINTMENTS</p>	<p>MARGARET LANE ANTIQUES 2 E. Main St., New Concord, OH 43762 Lynn Welker 614-826-7414 Cambridge Glass Matching Service Hours Mon-Fri 10-12AM, 1-5PM or by Appointment</p>
<p>GLASS RESTORATION BRILLIANT DON & LYNNE CRYSTAL WORMLAND ELEGANT MT. CLEMENS, MICH DEPRESSION 810-468-3519</p>	<p>YOU CAN ADVERTISE YOUR ANTIQUe SHOP HERE!</p>	<p>HELEN & JIM KENNON Heisey, Cambridge, Fostoria, Duncan, Imperial, Fenton, Tiffin P.O. Box 114, Brookville, OH 45309 PH: 513-833-5406 SHOWS ONLY</p>



National Cambridge Collectors, Inc.
P. O. Box 416,
CAMBRIDGE, OHIO 43725-0416

A nonprofit organization dedicated to the preservation and study of Cambridge Glass

You Are Cordially Invited
To Become A Member of

NATIONAL CAMBRIDGE COLLECTORS, INC.

Benefits derived from membership include: receipt of our club publication, The Cambridge CRYSTAL BALL; Informative Quarterly Meetings; Antique shows; Auctions; other special events; and unlimited admission to the museum.

The Cambridge CRYSTAL BALL is published the first of each month. This newsletter contains educational and interesting articles, questions and answers, information on reproductions and reissues, notices of all club functions, classified advertisements, dealers directory, and many other features of interest to collectors of Cambridge Glass.

Yearly dues are \$17.00 for individual Members and \$3.00 for each Associate Member. \$12.00 of the \$17.00 annual dues is for a 1 year subscription to the Cambridge CRYSTAL BALL. All members have voting rights, but only one issue of the CRYSTAL BALL will be mailed per household. Foreign mailings are subject to a postage surcharge.

Name (please print) _____ \$17.00

Mailing Address _____

City _____ State _____ Zip+4 _____

Associate Members: (Must be at least 12 years of age and living in the same household.)

1. Name _____

2. Name _____

3. Name _____

Total number of Associate Members _____ @ \$3.00 each \$ _____

TOTAL AMOUNT ENCLOSED: \$ _____

Please make check payable to: NATIONAL CAMBRIDGE COLLECTORS, INC.

Recommended by _____

Membership Renewal Notice

This is your last issue of the *CRYSTAL BALL*, if the date on your address label reads 9/94.

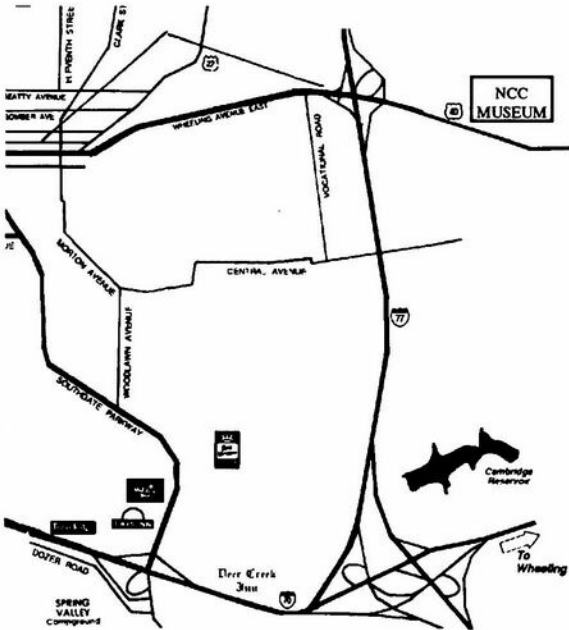
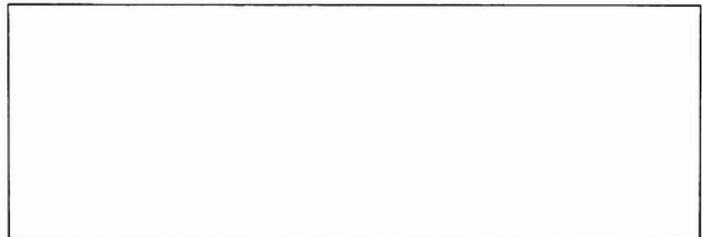
Please renew now!

National Cambridge Collectors, Inc.
P.O.Box 416, Cambridge, Ohio 43725-0416

NON PROFIT ORGANIZATION
U. S. POSTAGE PAID
Dayton, OH Permit #974

FORWARDING AND RETURN POSTAGE GUARANTEED

PLEASE DELIVER PROMPTLY, DATED MATERIAL.



NCC Museum of Cambridge Glass

The museum is located on U.S. Route 40, one-eight mile east of I-77 near Cambridge. Hours: 9 a.m. to 4 p.m., Wednesday through Saturday; noon to 4 p.m., Sunday (March, through October). Phone 614-432-4245.

Closed Mondays, Tuesdays, Easter and the 4th of July.