



Cambridge Crystal Ball

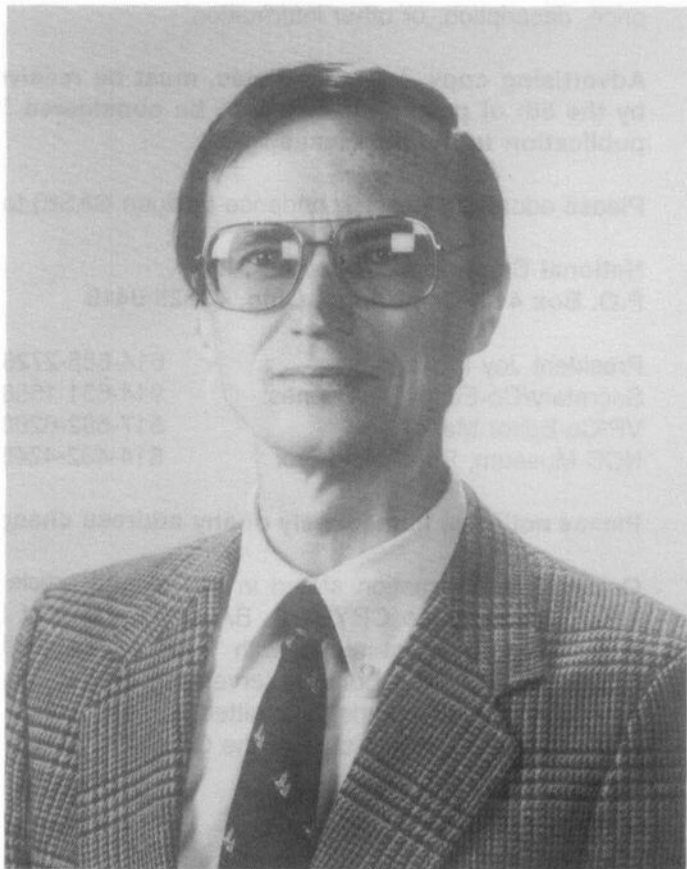
Published monthly by National Cambridge Collectors, Inc.
to encourage and report the discovery of the elegant and boundless product of the
Cambridge Glass Company of Cambridge, Ohio

Issue No. 265

May, 1995

GLASS COLLECTOR'S DIGEST EDITOR NAMED CONVENTION SPEAKER

D. (Don) Thomas O'Connor, Editor of Glass Collector's Digest, has been named as the 1995 Convention Banquet speaker on June 24, 1995. Mr. O'Connor was born in 1942 and grew up in Duluth, Minnesota. He received a B.A. from Gustavus Adolphus College in St. Peter, Minnesota (1964), an M.Div. from the Lutheran School of Theology at Chicago (1988), and a Ph.D. in "Religion and Society: Social Ethics" from the Claremont Graduate School in California (1972).



Tom was an Assistant Professor of Religion at Marietta College from 1972-75. He then served as a full-time parish minister in the Presbyterian Church for ten years. After a short pastorage in Pennsylvania, he began working for the Richardson Printing Corp. in 1986. When David Richardson left his family business to form The Glass Press, Inc. in May 1994, O'Connor continued his editorial work with the new company.

Tom has been editor of Glass Collector's Digest since its beginning in June 1987. He is also co-author of Lotton Art Glass, a book published by Antique Publications, and he is presently working on a book on Kemple Glass.

O'Connor is a certified high school basketball official, and he enjoys golf, swimming, running, and other sports. He also likes to sing, play guitar, and perform in community theater productions. Tom remains a Presbyterian minister in good standing, and he fills pulpits on a part-time basis as needed.

Married for 28 years, he and his wife, Vivian, live in Marietta, Ohio. They have two children: Mark, 22, and Christine, 17.

Cambridge CRYSTAL BALL

Official Publication of National Cambridge Collectors Inc., a non-profit corporation with tax exempt status. Published once a month for the benefit of its members. All rights reserved; reproduction in whole or in part without written permission of NCC and the author is prohibited.

Membership is available for individual members at \$17.00 per year and an additional \$3.00 for associate members (12 years of age and older, residing in the same household). Of the master member dues, \$12.00 is credited to a one-year subscription to The Crystal Ball. All members have voting rights, but only one Crystal Ball per household. Back issues of the CRYSTAL BALL are available for \$1.00 each or 12 issues for \$10.00.

1994-1995

OFFICERS AND COMMITTEE CHAIRPERSONS

President.....	Joy R. McFadden
Vice-President.....	Mark A. Nye
Secretary.....	Richard D. Jones
Treasurer.....	Charles Upton
Sergeant-at-Arms.....	Cynthia A. Arent
Acquisitions.....	Joe Andrecjak
Budget & Finance.....	Mark A. Nye
By-Laws.....	Charles Upton
Long-Range Planning.....	Rick Jones, Tarzan Deel Mike Arent
Membership.....	Jeff Ross
Museum Expansion/Relocation.....	Willard Kolb J.D. Hanes
Museum Facilities.....	Carl Beynon, Joe Miller
Museum Interior.....	J.D. Hanes
Non-Glass Items.....	Tarzan Deel
Nominating.....	Mark A. Nye
Program.....	Open
Projects.....	Tarzan Deel
Publications.....	Mark A. Nye
Publicity.....	Cynthia A. Arent
Study Group Advisor.....	Marybelle Moorehead
1995 Auction.....	Lynn M. Welker
1995 Antique Show.....	Mary Beth Hackett, Charles Upton
1995 Flea Market.....	Marybelle Moorehead
CRYSTAL BALL Editors.....	Rick Jones, Mark Nye

National Cambridge Collectors, Inc. owns and operates the **Museum of Cambridge Glass** at 9931 E. Pike Road Cambridge, Ohio. Open April through October 9AM-4PM Wednesday through Saturday and Noon-4pm on Sunday. March open Friday-Sunday. Closed November-February, Easter, July 4th.

ADVERTISING RATES

Display Rates (camera ready ads preferred)

Unit	Members	Non-Members
Full Page	\$45.00	\$60.00
3/4 page	\$35.00	\$50.00
1/2 page	\$25.00	\$35.00
1/4 page	\$15.00	\$25.00
1/8 page	\$10.00	\$15.00

Classified Rates

10 cents a word \$2.00 minimum

Abbreviations and initials count as words. Type sizes cannot be mixed in classified ads. Payment in full must accompany all ad copy. Contact Editor for copy assistance

Dealer Directory

Six Line Maximum \$24.00 for 12 month contract

Cambridge CRYSTAL BALL assumes no responsibility for items advertised and will not be responsible for errors in price, description, or other information.

Advertising copy, letters, articles, must be received by the 5th of preceding month to be considered for publication in the next issue.

Please address all correspondence (include SASE) to:

National Cambridge Collectors, Inc.
P.O. Box 416, Cambridge, Ohio, 43725-0416

President Joy McFadden:	614-885-2726
Secretary/Co-Editor Rick Jones:	914-631-1656
VP/Co-Editor Mark Nye	517-592-6200
NCC Museum, Phone and Fax	614-432-4245

Please notify us immediately of any address change.

Opinions or information stated in any signed article or letter printed in the CRYSTAL BALL are those of the author and may not agree with National Cambridge Collectors, Inc. The Editor reserves the right to refuse and to edit any material submitted for publication to conform to the editorial style of the CRYSTAL BALL.

President's Message

Time to Pack, to Prepare, to Wish

I have spoken by telephone with several NCC members since the Auction. To me, these calls indicate that members are starting to build momentum looking toward Convention. A great deal of time and energy goes into planning the Convention and Mark Nye is a master at making these plans. He has many interesting things in store, both fun and educational.

It is *your* Convention and you can do your part to help, no matter how far away you live from Cambridge. If you have a free hour the weekend of Convention, please volunteer. We have many ways you can help to make your Convention a success.

The Antique Show dealers are packing their quality Cambridge Glass which will be for sale in their booths. There will be some new dealers and many of your favorites are returning. Bring your wish list.

You will probably cross several items off that list.

You will also enjoy the flea market, the mini-auction, speakers, seminars, Show and Tell, the Cambridge Glass Workers reunion and plenty of old fashioned gabfests about our favorite subject: CAMBRIDGE GLASS!

By the time the weekend is over, you'll need another vacation to recuperate.

There is plenty of other information about the Convention in this issue. Request your vacation, make motel reservations, buy plane tickets or tune-up the car. Don't miss it or we'll miss you. You really got to be there!



Collector's Corner: Top Shows in Midwest and East

CHICAGO GLASS SHOW - MARCH 11, 1994 By Fred Lovejoy

With several major glass shows being held in California, Texas and elsewhere this weekend, I was a little concerned about the quality and quantity of Cambridge Glass that would be offered at the Chicago show.

A warm, sunny spring day greeted well over a thousand glass enthusiasts who were waiting for the doors to open. The line moved quickly and I was inside in less than half an hour. I must give credit where credit is due. The Chicago 20-30-40 Depression Glass Club did a fabulous job of sponsoring and organizing the show.

I was pleasantly surprised to see many familiar faces as dealers were set up from all over the eastern United States. Since my particular interest is Caprice, I spent my first trip through the show checking Caprice prices and availability. Some of the best Caprice I've seen in years was available.

There were Caprice decanter sets in Amethyst and Green in the \$350.00 range, a Crystal Doulton pitcher for \$850.00, and several Moonlight Blue marmalades and mustards at prices ranging from \$150.00 to \$250.00 for the marmalades. There was a wide variety of Caprice vases and an extraordinary display of Cambridge glass in Farber.

I noticed two "Flying Lady" bowls, one in Amber and another in Crown Tuscan with matching candles. There was also a generous amount of Nude stem ware in various colors and types. Many of the dealers offered Cambridge Swans in most styles, sizes and colors. Rosepoint was plentiful and several punch bowl sets, one in Carmen, were represented.

There was a beautiful pair of nude Aladdin Electric Lamps in the "crown tuscan" color for \$165.00. (Editors note: the correct name for the color is Alacite) I made a mental note to return later and make an offer, as I was on my Caprice sweep at the time.

(continued on page 18)

CONVENTION UPDATE

By Mark A. Nye

Tentatively scheduled for the Saturday afternoon is a talk on the process of mold making. Details are still being worked out and more information will be available in the June issue. This program will be presented prior to the Bring and Brag and Glass Identification sessions.

The title of Mr. Tom O'Connor's talk and slide presentation following the Saturday night banquet is "New Life for Old Moulds: The Kemple Glass Story."

A volunteer is needed to act as tour guide for the Dazell-Viking tour. If you would be interested in acting in this capacity, please contact me as soon as possible.

Golfers interested in playing in the Second Annual NCC Gold Outing should contact Mike Arent, if you haven't already done so, at (614) 432-4245 or (614) 432-6383 as soon as you finish reading this.

As of this writing, nothing new to report on the status of I-70 and its rerouting on Route 40 past the Museum. How this will affect Convention activities is unknown at this time. We will keep you posted.

The convention registration form is in this month's issue. Advance registration is necessary for planning purposes. Once again, we will have an early registration prize. Everyone registering by May 31 will be eligible for a drawing to determine the winner. Registration forms must be received in Cambridge by June 12. So we are able to plan for the correct number of participants, you must register for all of the events listed on the registration form that you plan to attend, even those offered at no charge. No registration is required for the programs, Bring & Brag and Glass Identification.

Anyone interested in helping the Convention Committee during the Convention should indicate this on their registration form.

Don't forget to bring your items for the mini-auction. See you in Cambridge June 22 - June 25.

P.S. No article this month. Instead, there are two patent drawings showing items from the ball shape

portion of the 3400 line. As witnessed by the filing dates, this line was brought out during the 1930s.

MINI-AUCTION PREVIEW

One of each year's convention highlights is the mini-auction held Friday evening following supper. It is a fun auction whose sole purpose is to raise money for the Museum. Once in a while, unusual events occur during this auction. The following is part of a description of last year's auction written by Karen Boyd for the August 1994 Crystal Ball.

"Keeping with tradition, following Friday evening's supper,....Willard Kolb from St. Clairsville conducted the unorthodox auction. Respected for his knowledge and expertise of glass, Kolb is equally revered for his irreverent auctioning style. This year, \$7,600 was raised to benefit the NCC Museum....

To first time attendees Kathryn and James Hetherwick....Kolb's antics were a bit of a surprise. They admitted the auction was unlike others they have attended, but Hetherwick joined in the fun and purchased an overpriced NCC baseball cap for \$35. Throughout the evening, Kolb auctioned 20 caps which raised close to \$1000. Doris and Roy Isaacs kept the bidding going on a 'created' Cambridge glass piece. It is not uncommon to see a 'worthless' piece of glass go for several hundred dollars.

As the lights flickered, Kolb joked, 'Is someone trying to contact us?' Moments later a voice was heard. 'This is Arthur J. Bennett' he intoned from the beyond. He had been watching Kolb and his helpers conduct the auction and Bennett, late president of Cambridge Glass, wanted to add three pieces to the auction block to help boost the bottom." The three put-to-gather hodgepodge pieces "donated" by Mr. Bennett raised a total of \$3500!

We do need donations for this auction. Bring your items to convention and leave them at the registration desk or at the museum.

June 23, 1931

J. C. KELLY

Des. 84,482

WATER JUG OR SIMILAR ARTICLE

Filed April 21, 1931

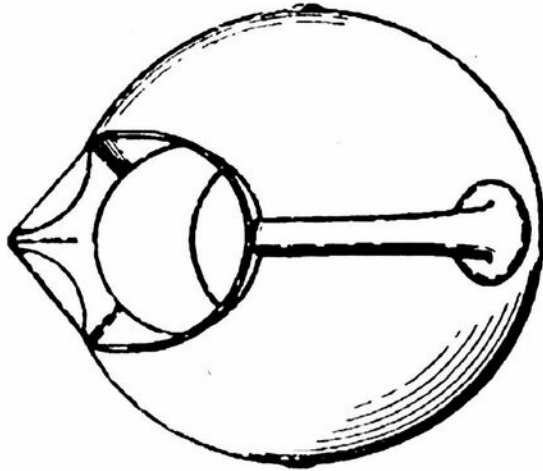


FIG 1

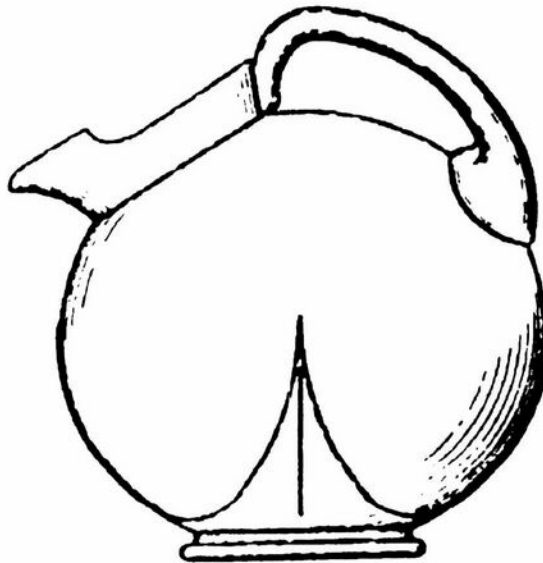


FIG 2

INVENTOR
Jessie Clark Kelly
BY *A. E. Dunlap*
ATTORNEY

Sept. 27, 1932

W.C. McCARTNEY

Des. 97,846

DECANTER OR SIMILAR ARTICLE

Filed Aug. 12, 1932

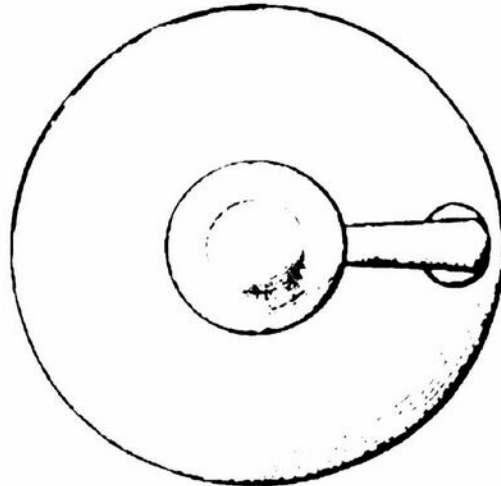


FIG 1



FIG 2

INVENTOR
W.C. McCartney
BY *M.S. Mason*
ATTORNEY

March Quarterly Meeting Pritchard Laughlin Civic Center March 3, 1995

The meeting was called to order by President Joy McFadden at 7:45 p.m. Ninety members present.

The secretary read the November minutes. Mac Otten amended the minutes to include "decorations" in addition to etchings in the Miami Valley Study Group's publications effort.

Charles Upton read highlights from the 1994 Financial Statement for the Club.

It was moved by Charles Upton to amend the By-Laws to change the winter meeting timing from February to March. It was seconded by Mac Otten and approved by acclamation. Also, it was moved to amend the financial review from "an audit" to "a review by a licensed Certified Public Accountant. It was seconded and carried after discussion. Members asked for clarification between an audit and a review. Other members with financial expertise confirmed that this was standard procedure.

Rick Jones gave an update on the Long-Range Planning Committee's desire to improve the technology in the Museum. Members were discouraged from donating obsolete technology and encouraged to provide contemporary software and hardware that could truly update our systems.

Jeff Ross reported that Membership now totaled 1427 (master 1035, associate 384, lifetime 3, honorary 5). This is nearly equal to 1994 levels.

J.D. Hanes reported the Museum opened the 1995 season today. Museum donations were up 60% in the past year. The ultimate goal is to have all owned, not loaned inventory. The Interior Committee is working on the physical inventory to resolve any discrepancies, insuring all donations are properly denoted.

Tarzan Deel said the Non-Glass Committee was trying to get the Storage Building in order and reduce non-Cambridge items like Molds. Also, a sale of back issues of the Crystal Ball was announced, helping to lighten clutter. The Projects Committee is talking to Boyd's about future Prism colors. He welcomed member suggestions on other

fund-raising ideas.

The Nominating Committee presented the 1995 slate for the three open Board of Directors positions: Lynn Welker, Ed Chamberlain, Bud Walker, and J.D. Hanes.

Mark Nye (publications) reported that reprints of the 1940 catalog would be available by Convention. The Rosepoint Price Guide has been updated. The Caprice book is on its second printing. Mark solicited member assistance on updating other price guides: Nearcut, 1930-34 catalog, 1949-53 catalog. The Miami Valley Study Group is making good strides on the Etchings book.

Cindy Arent said the Publicity Committee has sent out a Calendar of Events for our upcoming Convention. Mark Nye, Convention Chairperson, announced Tom O'Connor will be the Banquet Speaker. This year there will be a tour of Dalzell Viking ... need a leader for the Car Caravan! On Friday, there will be Coffee with Cambridge and a tour of the Bennett Museum. Thursday night will be a Picnic in the Park and Band Concert, a good way to give us some positive visibility in the community. Also, the Dexter City Antique Mall will be inviting convention registrants for an Open House. Mark needs volunteers for: book sales, registration, and sponsors for parties. He secured sponsorships for the Souvenir booklet from the Cambridge Nudes, Willard Kolb, and Bill Hagerty.

Joy reported that the Antique Show contracts had gone out, and advertising is almost finished. A list of dealers will be in the registration packet.

Rick Jones the Crystal Ball report and thanked members for their good suggestions/input.

There were no committee reports from: acquisitions, budget and finance, museum facilities, museum expansion, or study group advisory. Lynn Welker's report for the Auction Committee was one word ... "tomorrow". With no Old Business or New Business, the meeting was adjourned at 8:45 p.m. for Lynn's Auction preview.

Respectfully submitted,

Richard D. Jones
Recording Secretary

MUSEUM MOMENTS

I-70 Set to Open by Convention

By J.D. Hanes

Trucks and cars and vans, oh my! Okay, maybe I'm not a great writer or an original thinker. But with the Interstate 70 detour that I told you about last month, it has been interesting at the museum.

Saying that we have heavy traffic on Route 40 is an understatement. However, it hasn't affected us all that much. Some people are visiting, just because they are going by and need a break. Others had made plans to visit and were surprised to find the detour. The state Department of Transportation is saying that they will have the interstate reopened by mid-June. Now, I don't know what's its like in the states that you all live in, but usually in Ohio it's never finished when they estimate.

All of us on the Museum Interior Committee have been busy working on making changes and improvements to the displays in the museum. I think that you will all be pleased with the changes.

Donations received since last month are:

From *Joan Bond* of Ohio a monetary donation.

From *Bud Walker* of New Jersey a monetary donation. This was a fee paid to Bud for an article that he wrote for *Glass Collectors Digest*. Bud, it was very nice for you to do this.

From *The Chicago Nudes Study Group* a large donation from an auction that they held at their group meeting. Those who participated in the auction were: Mary Sue Lyon; Kelvin Moore; B.J. Cars; Don Sobolewski; Sharon Moore; Heather Moore; Mary Kreitling; Walt Kreitling; James Curnutt and Rose Curnutt. They specified that the money be used exclusively for the purchase of glass for the museum. I know that these funds will be used well by the Acquisitions Committee.

From *John and Karen Boyd* of Ohio a monetary donation in memory of Doyle Hanes.

We want to thank all of the above people for these generous donations.

In this issue you will find your registration form for the convention. Don't forget to send it in, and plan on a fun and informative weekend.

As I know there are many things to be in this issue, I will close now. Until next month, Happy Cambridge Hunting!

A NOTE FROM THE "MANAGING EDITOR"

As Willard Kolb used to say, when he was President of this organization, "don't go to sleep at a Board meeting or they will elect you President". Well Willard, I guess that also goes for being late to a Board meeting. I was late to the March meeting and as you read last month the above title was "bestowed" upon me. Oh well, live and learn!

This month's Crystal Ball is being handled differently due to the Board of Directors elections. Usually I am the one that does the preparation for the mailing of the Crystal Balls. This includes taking them to and picking them up from the printers, placing the address labels on and mailing them. A problem became apparent when I decided to accept running for re-election to the Board of Directors. I could not do the "mail prep" for this issue due to the ballots being included. Therefore your President, (no not Hillary), Joy McFadden, formed a temporary committee to do this work for the May issue.

Those she appointed are: Jeff Ross, Marybelle Moorehead, and Sharon Miller. Jeff was a natural selection as he is the Membership Chairman and that is who I always get the mailing labels from. He also must check that each household gets the proper number of ballots. Marybelle has been involved many times through the years in being on the Elections Committee that counts and verifies the ballots. Sharon has also served on the Elections Committee, and has aided the organization in other things, like being the coordinator for the Club Sales Table at the Convention.

- **J.D. Hanes**

BOARD OF DIRECTORS NOMINEES

The 1995 Nominating Committee presents for the Memberships' consideration, the following biographies of the nominees seeking election to the NCC Board of Directors. The three (3) available seats are for a four-year term through 1999. Please follow the instructions on the Ballot attached to this issue to cast your vote.

Jeffery D. (J.D.) Hanes Born and raised in Cambridge, Ohio, J.D. didn't start collecting Cambridge glass until 1982 at the age of 20. His collecting started, with the glass that his parents and grandmother had, as well as a set given to him by a second cousin in 1982. From this grew a love for this fine glassware and his collection now includes Crystal Caprice, Crystal etched Marjorie, Smokers Items, Crown Tuscan, and unusual items.

He joined N.C.C. in February 1984, and was elected to the Board of Directors in 1987 and again in 1991. He served as Secretary from June of 1988 until March of 1991. He currently serves as the Chairman of the Museum Interior Committee and Co-Chairman of the Museum Expansion/Relocation Committee. He also serves on the Membership, Acquisitions, Non-Glass Items, Auction and Committees and has contributed many articles to the Crystal Ball and is a founding member of the Cambridge Cordials Study Group.

J.D. is single and shares a home with his two dogs. A 1980 graduate of Cambridge High School, J.D. attended Muskingum Area Technical College. J.D. is currently employed by N.C.C., Inc as the Museum Attendant and Corresponding Secretary. He also does some management consulting.

J.D. is a member of the First United Methodist Church and serves on the Administrative Board, Worship Committee, Chairman of the Music Committee and Pictorial Directory Committee. He also sang in the Chancel Choir, directed the Children's Choir, and was Assistant Director of the Children's Handbell Choir. He is member of Lodge #66 F&AM and is a member of the National Imperial Glass Collectors. In his spare time, he enjoys reading, looking for glass, (Cambridge as well as other companies of the upper Ohio valley), collecting Universal Pottery, and other varied interests.

Lynn M. Welker A lifelong resident of New Concord, Ohio, Lynn is the co- owner/manager of Margaret Lane Antiques. He has been collecting Cambridge Glass for many years and has a wonderful collection of rare and unusual pieces. Many of these pieces he shares with the public by loaning them to the N.C.C. Museum of Cambridge Glass.

Lynn is a 1970 graduate of Muskingum College with a degree in Music and History. Lynn, along with his parents, have authored four books on the subject of Cambridge Glass.

Lynn became a member of the N.C.C. in 1975. He was elected to the Board for the first time in the spring of 1975, and has been re-elected in 1979, 1983, 1987 and 1991. He has served as the Chairman of the Annual Benefit Auction committee for the past 19 years. He has also served on numerous committees including: Acquisitions; Convention; Antique Show; Projects; Program; and Museum Interior. He also conducts the Show and Tell program at our Quarterly Meetings, and the Glass Identification session and "Bring and Brag" session at the Annual Convention. Lynn has written many articles for the Crystal Ball and has also been a speaker several times at the Annual Convention.

Lynn is single and lives with his dog Brittany. He is an advisor to the Kappa Sigma Fraternity at Muskingum College. He belongs to the New Concord United Methodist Church, where he sings in the choir and has served on the Administrative Board.

In addition to the above Lynn somehow finds time to have other interests. Some of these are playing golf, traveling and running.

F. R. (Bud) Walker Bud had a very interesting start in his Cambridge Glass collecting. He was friends with Wilbur Orme, who was the grandson of

A. J. Bennett, owner of the Cambridge Glass Company. The late Mr. Orme gave Bud a mug in Carmen with a Crystal handle. Mr. Orme also gave Bud the encouragement to join the N.C.C.

Bud was born in Somers Point, New Jersey. He graduated from Hammonton High School and Malvern Prep. He also served in the United States Army as a Tank mechanic in the Panama Canal Zone from 1952 to 1954. Later Bud was employed for more the 35 years by the Atlantic Electric Company in the Marketing and Engineering departments. Retired from Atlantic Electric, Bud and his wife Anna now run a 50 acre blueberry farm, in Egg Harbor, New Jersey. Bud has also done some work in a glass making operation. A friend of his had a small glasshouse in his back yard and Bud was the mould boy. This gives him a unique insight into the glass making process.

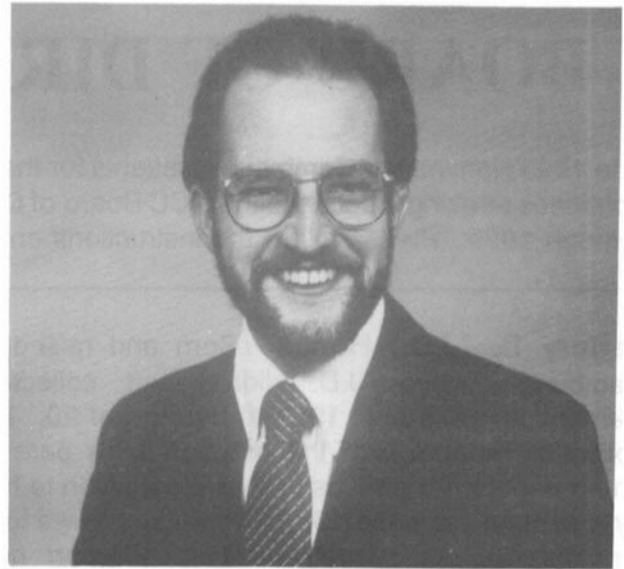
Bud and Anna have three children. Their daughter is an attorney with the Casino Control Commission of New Jersey. One son is a detective with the New Jersey State Police and their other son is a partner in M & R Soil Investigation Company.

Bud is a member of the Egg Harbor Historical Society, of which he has served as President, a member and former Vice President of the Glass Research Society of New Jersey and a member of the Mullica Township Planning Board.

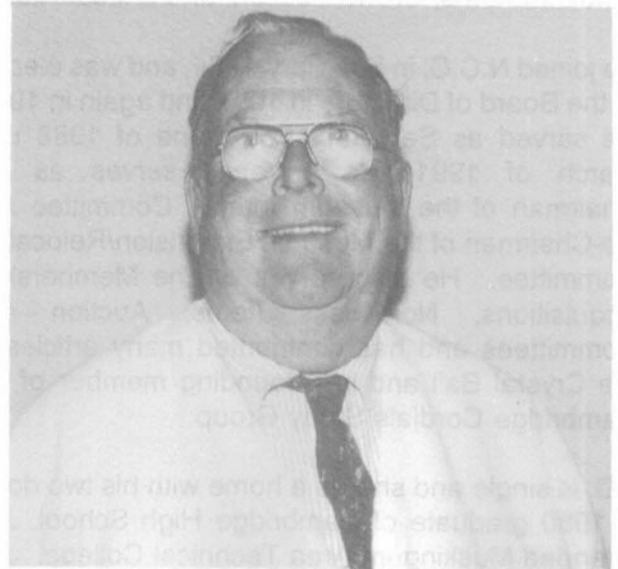
Bud was appointed to the Board of Directors of N.C.C. in November of 1994 to fill the unexpired term of David Rankin. He has assisted various committees of the N.C.C. including the Publications committee, By-Laws committee, Museum Expansion/Relocation committee, Glass Show and Sale, Auction, and Flea Market. At Convention time Bud can usually be found bidding furiously at the mini-auction and helping out with anything that is asked of him.

ED CHAMBERLAIN WITHDRAWS

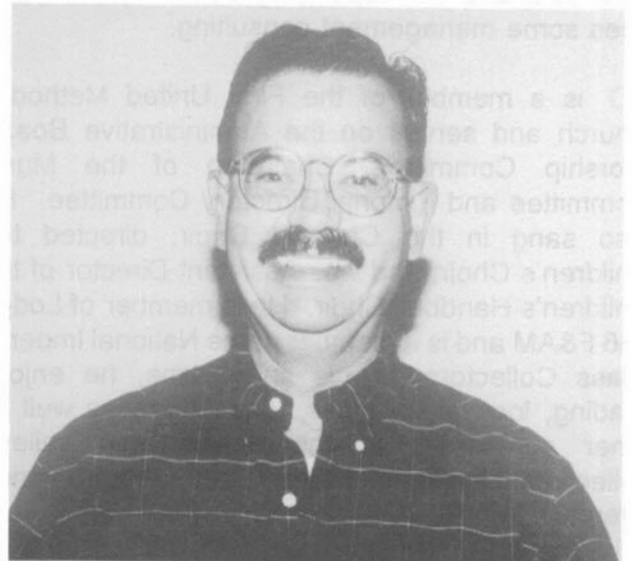
At the March Quarterly Meeting, it was announced that Ed Chamberlain had been nominated to run for the NCC Board of Directors. Subsequent to that, Mr. Chamberlain asked to have his name withdrawn for personal reasons. Thus, as presently stands, just three official nominees remain on the slate for the three available Board seats.



Jeffery D. (J.D.) Hanes



F.R. (Bud) Walker



Lynn M. Welker

***YOUR BALLOT(S) ARE ON THE
REVERSE SIDE OF THIS PAGE.***

Instructions:

Cut out ballot (photocopies not acceptable), mark the ballot, and return in A SEPARATE ENVELOPE to:

**BOARD BALLOT
NATIONAL CAMBRIDGE COLLECTORS, INC.
P.O. BOX 416
CAMBRIDGE, OHIO 43725-0416**

BALLOTS MUST BE RECEIVED BY JUNE 15, 1995

DO NOT INCLUDE OTHER ITEMS, LIKE CONVENTION REGISTRATION IN YOUR BALLOT ENVELOPE. THEY WILL NOT BE OPENED UNTIL JUST PRIOR TO CONVENTION.

REVERSE

OF

BALLOT

BALLOT(S)

National Cambridge Collectors, Inc.



Below is your ballot and slate of Nominees presented for election to the NCC Board of Directors. Positions are for four year terms to expire in 1999. Biographies for each of the nominees may be found in the May issue of the Cambridge CRYSTAL BALL.

Please mark you ballot and return to: BOARD BALLOT, National Cambridge Collectors, Inc., P.O. Box 416, Cambridge, Ohio, 43725-0416. Ballots must be returned by June 15, 1995.

OFFICIAL BALLOT

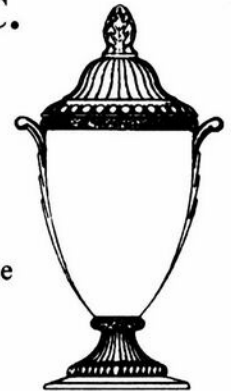
Vote for no more than three (3)
(terms will expire in 1999)

_____ Jeffery (J.D.) Hanes

_____ F. R. (Bud) Walker

_____ Lynn M. Welker

**NATIONAL CAMBRIDGE COLLECTORS, INC.
 22ND ANNUAL CONVENTION
 JUNE 22 - JUNE 25, 1995
 ADVANCE REGISTRATION FORM**



Please complete this form and return it to be received no later than June 12, 1995. To be eligible for the early registration prize drawing your form must be received by May 31. Make your check payable to National Cambridge Collectors, Inc. and mail completed form and check to:

National Cambridge Collectors, Inc.
 Convention Registration
 P.O. Box 416
 Cambridge, OH 43725-0416

Each person registering for the convention must pay the registration fee of \$18.00 regardless of the number of events you plan to attend. The registration fee includes unlimited admission to the NCC Inc. Antique Show, the Thursday Night Picnic, Friday Morning Coffee with Cambridge, all educational events and entitles you to receive the Convention Booklet and the Convention Souvenir. For dealers in the NCC Inc. Antique Show attending other convention activities, the registration fee is \$13.00 (regular registration fee less show admission charge). The benefits are the same. You must register for all events you wish to attend, including those offered at no charge.

Please list separately each person registering. Name should be given exactly as wanted on your name tag. Please provide your NCC, Inc. membership number and indicate if this is your first convention by writing yes or no under the "1st Conv." heading. If registering more than 3, list additional members of your party on the reverse.

NAME - PLEASE PRINT OR TYPE	MEMBER#	1ST CONV.
1. _____		
2. _____		
3. _____		

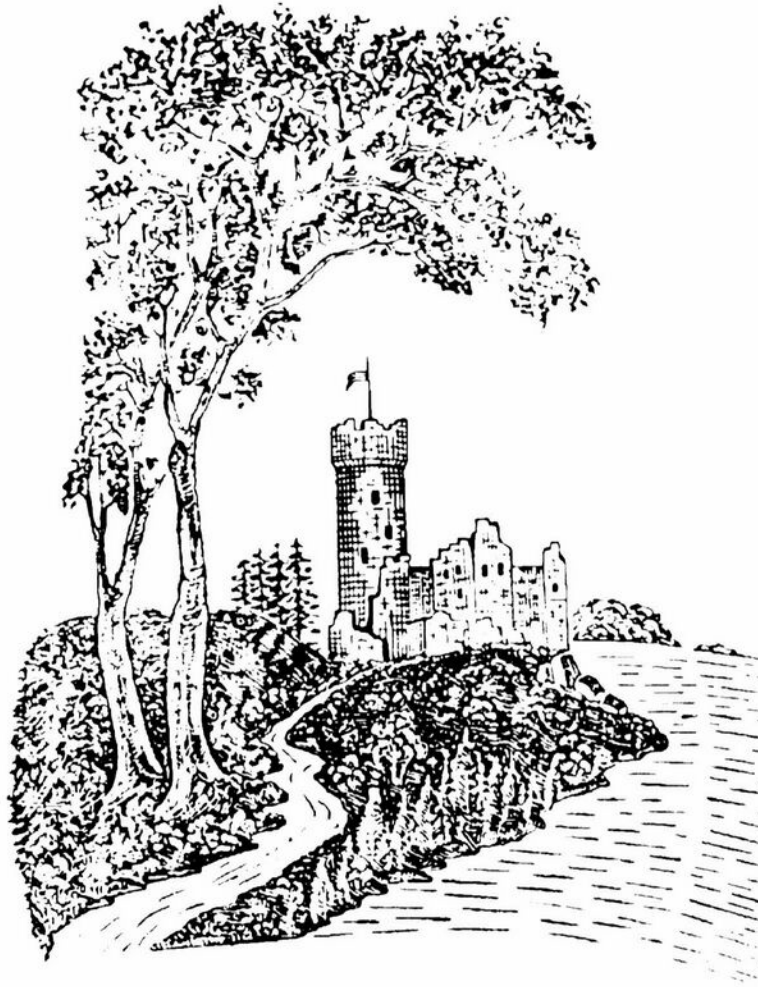
Address: _____

Street/P.O. Box	City	State	Zip
-----------------	------	-------	-----

<u>Activity</u>	<u>Fee</u>	<u>How Many</u>	<u>Total</u>
Registration	\$18.00	_____	_____
Registration (Show Dealers)	\$13.00	_____	_____
Golf Tournament	n/c*	_____	n/c
Dazell Viking Factory Tour	n/c	_____	n/c
Thursday Evening Picnic & Band Concert	n/c	_____	n/c
Coffee with Cambridge	n/c	_____	n/c
Bennett Museum Tour	n/c	_____	n/c
Friday Night Supper	\$ 9.00	_____	_____
Saturday Night Banquet	\$16.00	_____	_____
Sunday Morning Buffet Breakfast	\$ 7.00	_____	_____

Total _____

*Participants will be required to pay greens fee directly to the Course.



"Among the many new things in CAMBRIDGE wares for 1931 is the beautiful etching which we have named 'Windsor.'"

ADDITIONAL REGISTRATIONS

NAME - PLEASE PRINT OR TYPE

MEMBER# 1ST CONV.

4. _____

5. _____

6. _____

7. _____

1995 CONVENTION MOTEL INFORMATION

Cambridge: Exit 178 off of Interstate 70, Rt. 209.

DEER CREEK MOTEL & RESTAURANT

2325 Southgate Parkway
614-432-6391.

For reservations call 1-800-637-2917. 24 hour cancellation notice.
Approximately 50 rms available. \$45.45 single or double.

BEST WESTERN CAMBRIDGE

1945 Southgate Parkway
614-439-3581

No extra for children
One week cancellation notice.
Approximately 50 rms available. \$55 single or double.

HOLIDAY INN CAMBRIDGE

2248 Southgate Parkway
614-432-7313

One week cancellation notice. Approximately 30 rms available. \$75
single or double.

TRAVELODGE OF CAMBRIDGE

State Rt. 209 South
614-432-7375

One week cancellation notice.
Approximately 15 rms available. \$50 single, \$55 double with 1 bed, \$59
double 2 queen size beds. NCC members with ID get 15% off.

DAYS INN CAMBRIDGE

2328 Southgate Parkway
Children free.

Approximately 45 rms available.
\$89 single or double

CAMBRIDGE FAIRDALE INN

6405 Glenn Highway, Cambridge
614-432-2304

Located at the intersection of Interstate 70, Exit 176 and U.S. Routes
22 and 40. No extra for children. One week cancellation notice.
Approximately 6 rms available.
No rate available.

Zanesville: 23 miles west, off Interstate 70.

Holiday Inn, I-70 at Exit 160
614-453-0771

Comfort Inn, I-70 at Exit 155
614-454-4144

Best Western, I-70 at Exit 155
614-452-4511

Days Inn, I-70 at Exit 160
614-453-3400

Fairfield Inn by Marriott, I-70 at Exit 155
614-453-8770

Members and friends are encouraged to book their reservations NOW.
The most affordable rooms fill up quickly. Save your money to buy
glass!

CAMBRIDGE GLASS BOOKS FOR SALE

By National Cambridge Collectors, Inc.

Colors in Cambridge Glass

128 pages, 60 color plates, fully indexed, Hardbound with price
guide \$19.95

1930-1934 Cambridge Glass Company Catalog Reprint

250 page reprint of original catalog, Paperback with price guide
\$14.95

1949-1953 Cambridge Glass Company Catalog Reprint

300 page reprint of original catalog, Paperback with price guide
\$14.95

1956-1958 Cambridge Glass Company Catalog Reprint

164 page reprint of original catalog, Paperback \$12.95

Cambridge Caprice

200 page book illustrating the most popular line of Cambridge
Glass. Lists color, decorations, reproductions and rare pieces.
Paperback with value guide \$19.95

**For NCC Members Only, the above publications are available at
a 10 percent discount.**

By Bill & Phyllis Smith

Cambridge Glass 1927-1929

66 page reprint of original catalog, Paperback with identification
guide \$7.95

By Cambridge Buffs Study Group

Nearcut (Temporarily Out-of-Stock)

108 page reprint of 1910 Cambridge Catalog, Paperback with price
guide \$9.95

Price Guide, Price alone, includes postage \$3.00

By Mark A. Nye

Cambridge Rose Point

94 Pages, fully indexed, Paperback with Value Guide \$12.95

Value Guide

Updated value guide for Rose Point Book, Included with above.
Price alone, includes postage \$5.00

Cambridge Stemware NEW. 2nd edition. Same format as
original. \$19.95

By Mary, Lyle and Lynn Welker

Cambridge Glass Company

120 pages of reprints from eight old catalogs, Paperback \$10.00

Cambridge, Ohio Glass in Color II, Spiralbound \$5.95

By Harold and Judy Bennett

1903 Cambridge Glass Company Catalog Reprint

106 page reprint of an original catalog, Paperback \$7.50

By Degenhart Paperweight and Glass Museum

Reflections, 45 page book giving a history of all 18 glass
companies in Guernsey County. Paperback, with pictures. \$5.00
including postage

**Address orders to: Books, National Cambridge
Collectors, Inc., PO Box 416,
Cambridge OH 43725-0416**

Please add postage and handling to your order (first book, \$2.00
each additional book, 50 cents), Ohio residents add 6 1/2% state
sales tax. Please send only check or money order, NO CASH, NO
CHARGE CARDS. *Dealer Discounts Available - Please Write!*

NATIONAL STUDY GROUP REPORTS

The Cambridge Cordials Study Group #14

The Cambridge Cordials met March 18 at the home of Cindy and Mike Arent. Nine members were present. The topic for the evening was Cordials group projects: past, present and future. Several projects were discussed with evaluations and suggestions regarding their progress.

Show and Tell presented many wonderful treasures, including the following: an Everglades Milk Glass Mug; #3011 Nude Claret in Crystal etched Chintz; a 4 1/2" Light Emerald Swan, signed, with candle cup insert; an 8 1/2" Crystal swan with blue and amber spray treatment; a Windsor Blue Flying Lady Bowl; and a #3400 12 oz. cordial decanter in Heatherbloom, etched Gloria.

- **Lorraine Weinman**

North Texas Study Group #15

The Cambridge Collectors of North Texas held their first meeting for 1995 on February 19, with 13 members and guests present. After the rather disappointing showing of Dallas in this year's Super Bowl (as in "did not show at all"), we concentrated on "glass collections" rather than "pass completions".

The February meeting was hosted by Don and Nedra Tinney at their new home. Everyone got so involved in Don and Nedra's Cambridge collection that we almost forgot to compliment and congratulate them on the new digs. Many thanks!

Don presented a short program on Cambridge Arms, showing examples from his collection and that of Geri Cook, who courageously brought several pieces with her. I'm happy to report a safe meeting, no drops, chips, or cracks! We also viewed the Cambridge Caprice and Cambridge Stemware books. Both are EXCELLENT references,

if you haven't seen one yet.

The Cambridge Collectors of North Texas will change our regular meetings to the fourth Sunday of the month beginning in March.

- **Scott Pierce**

Miami Valley of Ohio Study Group #13

The Miami Valley Study Group held their monthly meeting on February 14, 1995 at the Huber Heights Library. Nine members were in attendance.

During the business meeting, it was announced that the Quarterly Meeting would be on March 3, in conjunction with the Benefit Auction. Several members indicated their intention of attending. Our program for March will be on Candy items, led by Fred Schaefer. Information on the Convention of the National Depression Glass Association in July in Tulsa, Oklahoma was given. It was announced that Helen Kennon passed away on February 13. It was decided that flowers would be sent or an appropriate donation would be made. Dave Rankin led a lengthy discussion of the etchings book. 41% of the etchings are now ready. The discussion included the title, the importance of indexing, table of contents, format and level of detail on information to be included in the book. Assignments were given to all families present to begin work on indexing the etching plates to information in all the available Cambridge resource books.

Items brought for show and tell included: #525 beverage set in Amber that includes a cocktail shaker with metal lid and strainer and 6 glasses; #3400/133 11" corner vase in Forest Green; Crystal #7390 1 1/2 oz. narrow optic pousse cafe etched Marjorie; Crystal #7606 2 1/2 oz. wine, optic, etched Cleo; Milk Glass seashell #80 5" mayonnaise bowl, four footed with foil label.

- **Judy Rhoads**

**Miami Valley of Ohio
Study Group #13**

The Miami Valley Study Group held their monthly meeting on March 14, 1995 at the Huber Heights Library. Nine members were present.

During the business meeting, there was discussion of assignments for the indexing of the etchings book, and an announcement that flowers had been sent for the funeral of Helen Kennon. Seven of our members were in attendance as observers at the meeting of the Board of Directors that was held prior to the March Quarterly Meeting and a report was made about that meeting. We discussed the Board's decision that NCC would co-sponsor a glass show in New York that would involve the use of the NCC mailing list.

Fred Schaefer led an informative program on candy boxes. Many beautiful examples and a well researched hand-out contributed to a very informative program. Next month's program will be on glass blowing, led by the Wollenhaupts and the Huffords.

Items brought for Show and Tell included: a pair of Ebony 4 1/2" #1 swans, signed, with candleholder inserts; #3400/225 13 oz. Amber tumbler, wide optic, etched Diane; #606 Light Emerald oval individual salt, signed; Amber Community powder box bottom; Moonlight Blue #3500 Gadroon 3 part relish; Mandarin Gold shell ashtray; compote etched Rose Chintz; Amber Tally Ho cup, saucer and salad plate; Amber Nautilus water glass; crystal Doulton pitcher, etched Daffodil.

- **Judy Rhoads**

**Chicago Area Cambridge Nudes
Study Group #11**

The "Green Glass Bash" hosted by Kel and Sharon Moore at their Lansing, Illinois home the evening of March 18 was a smashing (fortunately no glass) success. Green, green everywhere and a wee dram to sip including a luscious home made Sangria. How did the Spanish get in on an Irish gig?

The evenings program was led by "Auctioneer

Colonel Walt Kreitling". Two Fostoria pieces, seven Cambridge pieces, one six piece Cambridge set and the highlight of the auction, a green shot gun decanter with two shell shots with wood holder. Hopefully, the spouse of the buyer didn't use this item in anger. Auction proceeds of \$386.50 are being donated to the N.C.C. Museum for the sole purpose of acquisitions.

At the conclusion of the auction a session of show and tell was held with the following items in evidence: CAMBRIDGE ITEMS: #110 Sea Shell 4 1/2 oz. Crown Tuscan seafood cocktail; #1226 10" Gold Krystal two handled plate, etched Lorna, signed; Caprice #214 Gold Krystal 3" ashtray; #2368 Crystal 10" vase etched Betty; #3900/124 Crystal 7" two part relish etched Rose Point; #782 Ebony 8 1/2" vase etched Peacock; #227 1/2 pair of 1 1/2" candlesticks in Cobalt Blue I etched #704; #3121 Crystal 5 oz. juice, gold decorated etched Wildflower, with original black and gold Wildflower label; #7606 Crystal 10 oz. goblet etched Cleo; #3500 Crystal 3 oz. cocktail with Rock Crystal Engraving Adonis; #851 Crystal ice pail with black enamel mallards, signed; #13 Martha Washington Crystal 7 1/2" bowl in red enameling with black enamel "Three Canny Scots" decoration; Custom piece for Wallace Sterling, a 5" diameter, 1/2" thick, beveled edges Crystal plate etched Rose Point, insert for 7" diameter, 3/4" deep sterling container, (waiter/lemon server), sterling piece marked "Wallace Sterling 4041; #1341 Blue Bell 1 oz. cordial; #3693/3000 Crystal two piece canape set, gold silk screen golfer; #3011 Statuesque Gold Krystal and Crown Tuscan 3 oz. cocktail; #1402 Tally Ho Forest Green decanter, Crystal applied handle and stopper with four handled 2 1/2 oz. cups; #897 Peach Blo dresser jar and top etched Boric Acid.

MISCELLANEOUS: Imperial #3551 18 oz. Green decanter Crystal ball stopper; Crystal tumbler Crystal trailed three car train decoration, possibly European; Optic Light Blue jigger gold decorated unknown manufacturer; Crystal satin jigger, unknown manufacturer; Crystal 10 ga. shot gun shell jigger, unknown manufacturer; Tiffin Black satin two piece ash receiver.

The next muster of the Nudes will probably be at the NCC Convention. Until the we bid you adieu.

- **B.J. Kersey**

COLLECTORS (continued from page 3)

I later saw similar lamps in two other booths. One booth was asking \$750.00 for one or \$1,300.00 for the pair. I immediately back tracked through those one thousand people that were behind me in line to locate the lamps. Two trips through produced nothing...they had been sold!

After over twenty years of hitting every show that I can humanly attend, I know better than to make a mental note to return later. I'm sure that by interrupting my Caprice sweep I missed those few Caprice items that continue to escape me. But as Scarlet so aptly put it, "tomorrow is another day".

ATLANTIQUE CITY SHOW, N.J. Brimfield Asso. By Bud Walker

My wife being an avid collector of Morgantown Glass, received an invitation to preview the Brimfield Associates Antique and Collectible Fair, held in the Convention Hall in Atlantic City, New Jersey. In previous years we had attended the show, and were rather disappointed in the quality and types of material for sale, most of it was not in keeping with what we collect. Knowing this, and all the traffic in Atlantic City on weekends, I was reluctant to go.

This year's show was outstanding, there was something for everyone. I felt that the quality was much improved. Being a Cambridge collector I was on the lookout for rare and unusual pieces. My first big find was a console set in Helio. This set had the nine inch candle holders with the ball in the center. Our next find was an elegant Farberware set. I'm so glad we stopped to purchase it, because it gave us a chance to see a pitcher and bowl that the dealer had. She claimed that an auction house had appraised it as European. It was Cambridge. After a call to our Cambridge expert, Lynn Welker to verify that the color was made by Cambridge, we are now the proud owners of a Mulberry Community pitcher and bowl. It almost killed us both lugging it to our car. I never realized how heavy a pitcher and bowl can be.

In addition, we found three Carnival glass tumblers in Water Lily and Cattails. One is marked Northwood and we believe the other two are early Fenton. Several weeks ago, I purchased pencil drawings of Water Lily and Cattails that were done

for the mould shop and are dated November, 1906.

Brimfield Associates are to be congratulated for bringing Atlantic City the largest indoor show in the country. With Atlantic City's new convention center under construction, I'm sure the show will continue to grow and the problem of parking will be alleviated. The new convention center will be more than twice as large, with direct access from the rail terminal. For collectors, this has become a show that you can't afford to miss.

RECENT FINDS

- Pair of Windsor Blue Sea Shell ashtray/card holder/cigarette snuffer
- Rubina covered candy jar
- #68 10" candlesticks, Primrose with black enamel and gold trim
- Primrose #1917/256 mayonnaise
- Nude stem Farber comport with an Amber insert, engraved as a commemorative piece to the death of a Reverend on November 23, 1935
- #47 Sea Shell 9 1/2" Cornucopia vase in Crown Tuscan with the Rockwell Sterling Sea Horse decoration.

Limited Promotion

\$49 Crystal Ball Back Issue Sale

Our backlog is your benefit! The Paper Room at the NCC Museum is overflowing with back issues of our Club Newsletter. We need to clear room to store more of the historical documents regarding the Cambridge Glass Company. We want this room accessible to members.

From April through June, we are offering *complete sets* of the Crystal Ball from the start of the Club for the incredible price of \$49 (plus shipping). Most newsletters will be the original, some may be photocopies.

All proceeds from this sale benefit the NCC Museum Fund. **Call or write the Museum. Act now and pick them up at the Convention.**

ASK NCC: LETTERS FROM MEMBERS AND FRIENDS

(Ed. Note: This is our winning response to the NCC Photo Quiz created by Bud Walker and published in our March issue.)

Dear Bud,

Seeing the lovely girl in your Photo Quiz, I immediately said Mrs. Orme, the name I had always called her. When this picture was taken, I believe she was Marjorie Bennett. Of course I could be mistaken. Probably I am.

The Orme's had twin sons, Wib and Bill, named for their Father and Uncle, who also were twins. Young Bill Orme looked exactly like this picture in the 1940's.

We were neighbors and lived directly across the street from the Orme's. Mrs. Orme and my Mother were in the same Bridge Club many years ago.

She was much older than this picture as I remember her, but remembering Bill Orme, the resemblance is unbelievable. The eyes and mouth are identical.

Her age - how about 18 years old?

Sincerely,
Virginia Bennett

P.S. Enjoyed the picture. Wasn't she beautiful!

Dear Virginia:

Congratulations. The young lady is Marjorie Bennett. Born in 1894, she was fourteen years old at the time this picture was taken. The picture was taken in 1908.

Bud Walker

Dear Editors,

For cloudiness in salt and peppers, add some water and white sand and shake vigorously. Learned this working some with Nellie Walker who did this job for Mike and Bud Powell after the shaker tops had been ground at polished. Hope it helps.

Respectfully,
M.J. (Stewart) Rochford
Florida

Dear Ms. Rochford:

Thanks for your reply to Dan Miecznikowski's letter in the March issue. FYI, Mike Powell was the head of the Grinding Department at the factory. Bud was Mike's son. We thank Mary Martha Mitchell for providing this information. Are we correct Mrs. Rochford? How about letting us know more about the work you did at the factory?

Rick

The DAZE Inc.	SPECIAL OFFER to NCC friends \$2.00 OFF the 1 year subscription price when on this form or copy of it.
The Original National monthly newspaper dedicated to the buying, selling and collecting of colored glassware and china including Depression Glass and the Elegant Glass (Cambridge, Heisey, Fostoria, etc.) We educate and inform you each month with feature articles by top notch columnists, readers "finds", club happenings, show news and a multitude of ads. Find those missing pieces to your American-made glass, china and pottery collection. Can't identify it? Perhaps we can help "keep up with what's happening" with a subscription to the DAZE. Buy, sell or trade from the convenience of your easy chair.	
Name _____	
Street _____	
City _____	
State _____ Zip _____	
[] 1 year \$21.00 [] 2 years \$40.00 [] \$2.00 Single Copy	
Subscription Hot Line: 1-800-336-9927	
Exp. Date _____ Card No. _____	
Signature _____	
Orders to: The Daze, Inc., Box 57, Otisville, MI 48463 Please allow 30 days for your first issue - Canadian Subscribers, add \$1.00 per year and subscribe by charge card only! This Special Offer may not be combined with any other special offer. Offer Expires December 31, 1995	



Where to Find Cambridge Is Now Crystal Clear.

If you're searching for that one elusive piece of Cambridge Crystal, call Replacements, Ltd. With close to 300 different patterns of Cambridge in stock, chances are very good that we can help.

With over 3,000,000 total pieces in over 58,000 patterns, Replacements, Ltd. is the largest buyer and seller of obsolete, inactive and active china, crystal and flatware in the world. So if you're looking to buy or sell Cambridge Crystal, call us. We're happy to help.

REPLACEMENTS, LTD.

China, Crystal & Flatware (obsolete, inactive & active)

1089 Knox Road, P.O. Box 26029, Dept. CB, Greensboro, NC 27420

Call Toll Free Daily, including Saturday
and Sunday, 8 am - 10 pm EST

1-800-REPLACE
(1-800-737-5223)

WE CLEAN CLOUDY GLASS!

** SATISFACTION GUARANTEED **

YES, IT IS TRUE THAT WE REALLY CAN RESTORE THE INTERIOR OF YOUR CRUET, VASE, DECANTER AND MOST OTHER INTERNALLY ETCHED ITEMS BACK TO NEAR ORIGINAL CONDITION!

WE DO NOT OIL, WAX OR COVER UP THE SICKNESS IN ANY WAY! WE ACTUALLY REMOVE IT.

NO ITEMS ARE TOO SICK TO CLEAN! IF WE CANNOT CLEAN YOUR ITEM TO MEET YOUR SATISFACTION, THE CLEANING IS FREE!

WE ARE SO CONFIDENT IN OUR SERVICE THAT WE ASK THAT YOU SEND NO MONEY. WHEN WE RETURN YOUR ITEM A BILL WILL BE ENCLOSED FOR THE POSTAGE & CLEANING. IF YOU ARE HAPPY, PLEASE SEND PAYMENT; IF NOT, RETURN THE BILL MARKED "NOT SATISFIED".

PLEASE ALLOW 6-8 WEEKS FOR REDELIVERY OF MOST ITEMS. ALL GLASS IS HANDLED AND CLEANED AT YOUR RISK. SOME VERY CLOUDY ITEMS MAY TAKE SEVERAL ADDITIONAL WEEKS.

CRUET	\$20.00	COCKTAIL SHAKER	\$30.00
COLOGNE	\$20.00	SALT SHAKER (SINGLE)	\$15.00
WATER BOTTLE	\$30.00	SALT SHAKER (PAIR)	\$25.00
DECANTER	\$30.00	CRUSHED FRUIT JAR	\$30.00
VASES (UNDER 12 IN.)	\$25.00	LAVENDER JAR	\$20-30.00

ALL OTHERS WRITE FOR QUOTE

SHIP TO: CARLISLE & ASSOCIATES
28220 LAMONG ROAD, DEPT. C
SHERIDAN IN 46069
(317) 758-5767 AFTER 6:00 P.M.

ISAACS ANTIQUES



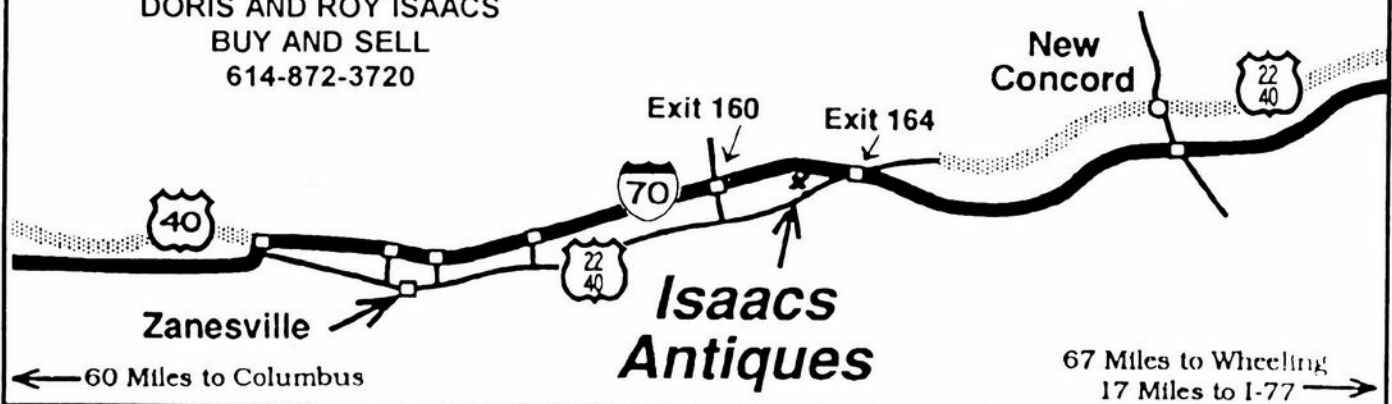
WE FEATURE GLASSWARE OF: CAMBRIDGE,
HEISEY, FENTON & FOSTORIA
Plus Art Pottery & a General Line of Antiques

DORIS AND ROY ISAACS
BUY AND SELL
614-872-3720

7525 East Pike
Norwich, Ohio 43767
614-872-3720

In East Pike Antique Complex - Rt. 40,
One Mile West of I-70 Norwich Exit #164

Hours 10 - 5:30 Mon. - Sat.
12 - 5:30 Sun.
Open Year Round



~ GLASS MARKETPLACE ~

Classifieds

FOR SALE: LaRosa Caprice 16" Plate (item #30). Some scratches from use, no chips or cracks. Best offer accepted. Please contact Susan Mills, 2777 Mission Road, Nashotah, WI 53058 or call (414) 646-2806.

FOR SALE: Crystal Apple Blossom cup & saucers, plates, stemware and more. Also few pieces in the following patterns Chantilly, Gloria, Gadroon, Wildflower, Caprice, Apple Blossom colors. SASE for list. **Dana Stephens, 45 Windsor Dr., Belleville, IL 62223.**

WANTED: Cambridge Arms Accessory Pieces. Vases #2355 any size, Peg Nappy #1537, and bobeches #27. **Jody Stacken, 3022 Quail**

Willow Reflections

(703) 684-1541

#300 CAPRICE cocktail, Moonlight Blue	65.00
#3130 GLORIA goblet (4)	40.00
#3011 NUDE candlestick, Crown Tuscan	200.00
#533 mayo with gold encl. BLUE WILLOW border, Amber	80.00
BLUE WILLOW 8½" plate, green enamel (3)	100.00
#1401 JEFFERSON 10 oz. tall goblet, Emerald (2)	12.00
#92 MT. VERNON ice bucket with handle	50.00
#26 MT. VERNON cocktail (2)	18.00
#3400/30 keyhole stem bowl, Peach-blo	185.00
#1532 WILDFLOWER mayo & liner, gold encrusted	50.00
CAMBRIDGE ARMS: #628 candlestick, #1536 peg nappy (3), #1563 arm, and #1636 peg bluejay (5 pieces)	225.00
#1 MARTHA WASHINGTON sugar	20.00
#2 STAR 4" candlesticks, Moonlight Blue (pair)	50.00
#3035 champagne, Amber bowl (3)	21.25

prices are each and all items are crystal unless otherwise indicated; shipping is extra; phone number is EST; a recorder is provided

Creek Dr, Topeka KS 66614. (913) 272-7118

WANTED: 6 small size, clear glass, Cambridge Glass Company Star Candlesticks. Please write to Norma Spong, 106 Kenwood Ct., Thief River Falls, MN 56701

WANTED: Hard to find Rose Point, Rose Point #3106 stems, Nude stems, and novelty items. Write price and description. **Nancy and Jim Finley, 711 West Broadway, Sedalia, MO 65301. Phone 816-826-5032 or 827-0101.**

WANTED: #2800 Community Crystal Basin, 15 1/2" in diameter. Pictured on page 107 of Welker Reprint Book One. **Bud Walker, (609)-965-2413.**

Donna McLendon

Route 1 Box 95A
Greenville GA 30222
Phone 1-706-672-4779
Fax 1-706-672-0469
Shipping and Insurance Extra

Rose Point - all mint

#3121 5 oz. footed tumbler (7) \$32.00 each
#3121 6 oz. tall sherbet (12) \$26.00 each
#3121 10 oz. Goblet (16) \$32.00 each
#3121 12 oz. footed Ice Tea (9) \$32.00 each
#3121 3 oz. Cocktail (7) \$35.00 each

WILDFLOWER - all mint

#3121 1 oz. Cordials (6) \$65.00 each
#3121 6 oz. Tall Sherbet (6) \$22.50 each
#3121 4 1/2 oz. Claret (5) \$45.00 each
#3121 10 oz. Goblet (6) \$25.00 each
#3121 12 oz. ftd. Ice Tea (5) \$30.00 each

**TIFFIN GLASS COLLECTORS CLUB
10th ANNUAL SHOW & SALE**

SCHOOL OF OPPORTUNITY

780 E. Seneca Co. Rd. #20 Tiffin, Ohio

Friday, June 23, 1995 - 7 PM - 9 PM

Premier Admission \$5.00

Saturday, June 24, 1995 - 10 AM - 5 PM

Sunday, June 25 1995 - 11 AM - 4 PM

General Admission \$2.00 (Good Both Days)

BANQUET & GLASS AUCTION

SATURDAY, JUNE 24, 1995 - 6:30 PM

Guest Speaker:

Paul Stankard, Internationally Known Paperweight Artist

(Banquet Reservations Required)

GUEST AUTHORS:

Fred Bickenheuser, Tom & Neila Bredehoft

For More Information, Call 419-447-4452



**19th ANNUAL
NIGCS CONVENTION**

JUNE 2, 3 and 4, 1995
ST. CLAIRSVILLE, OHIO

Belmont Technical College
(Four miles west of Hampton Inn - I-70 Exit 213)

GLASS SHOW AND SALE

Saturday, June 3 • 1-5 p.m. Sunday, June 4 • 12-4 p.m.
Admission: \$2.00 Donation

CAPE COD DISPLAYS OPEN TO THE PUBLIC

FREE PUBLIC SEMINARS

Saturday, June 3 • 10-11:30 a.m. Sunday, June 4 • 10-11:30 a.m.
Question & Answer Session "Cape Cod by Imperial"

With Former

by Authors

Imperial Employees

Myrna & Bob Garrison

GLASS ID • Sunday, June 4 • 1:00-2:30 p.m.

Open to the Public • BANQUET • Hampton Inn/Undo's West

Saturday June 3 at 6:30 p.m. - Must have reservations

Speakers: David Richardson, Publisher and

Dr. James Measell, Author of the upcoming series of books

"Imperial Glass, A to Z"

National Imperial Glass Collectors' Society, Inc.

P.O. BOX 534 - BELLAIRE, OHIO 43906

(410) 995-1254 • (216) 442-0279 • (703) 430-5460



1995 FIFTEENTH ANNUAL

**Fostoria Glass
Society CONVENTION
SHOW & SALE**

DELFT NORONA MUSEUM

Eighth Street & Jefferson Avenue
Moundsville, West Virginia

Friday, June 9, 1995	Premiere Admission \$6.00
Premiere Show and Sale	6:00 P.M. - 9:00 P.M.
Saturday, June 10, 1995	General Admission \$3.00
Show and Sale	11:00 A.M. - 5:00 P.M.
Glass Auction	6:00 P.M.
Marshall County Fairgrounds 12th Street, Moundsville, W. Va.	
Sunday, June 11, 1995	General Admission \$3.00
Flea Market - Free Admission	10:00 A.M. - 2:00 P.M.
Show and Sale	11:00 A.M. - 4:00 P.M.

Moundsville Chapter Flea Market

June 11, 1995

Set-Up 8:00 A.M. \$15 Per Couple Fee

Early Buyer Fee \$15 Per Couple

Free Admission at 10:00 A.M.

Contact Clara Robinson - (304) 845-3897

For More Information Contact:

Fostoria Glass Society of America, Inc.

P.O. Box 826, Moundsville, W. Va. 26041

or Call (304) 737-2006



HEISEY COLLECTORS OF AMERICA, INC.

25th Annual

GLASS SHOW AND SALE

*Celebrate the Kickoff of our Centennial Celebration with
50 PROMINENT DEALERS FROM ACROSS THE US*

—Preview—

Wednesday, June 14, 1995, 5 to 8 p.m.

—\$10 Admission—

Thursday, June 15, 1995 12 noon to 5 p.m.

Wednesday, June 16, 1995 12 noon to 5 p.m.

\$4 Admission (50-cent discount with card)

Saturday, June 17, 1995 12 noon to 5 p.m.

FREE Admission

Featuring Free All-Heisey Glass Display

OSUN-COTC Campus, Country Club Dr.,

Newark, Ohio

30 miles east of Columbus on I-70, exit St. Rt. 37

To St. Rt. 16, exit Country Club Drive, go 1 mile north

For more information call (614) 345-2932

Proceeds Benefit The National Heisey Glass Museum

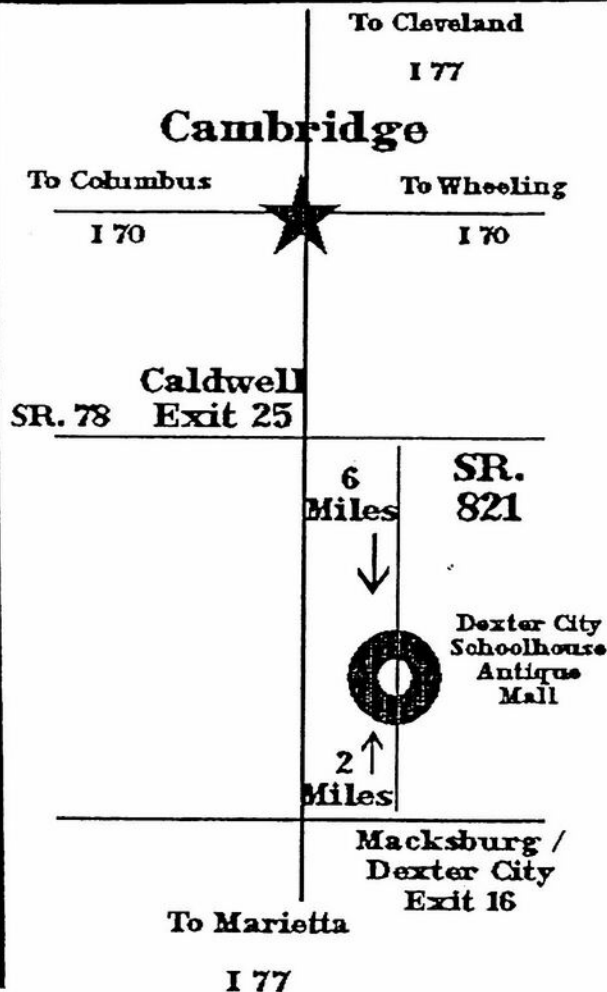
DEALERS



DIRECTORY

NOTE: When writing to the Dealers listed here, please enclose a SASE!

<p>DAUGHERTY'S ANTIQUES Jerry and Shirley Antiques and Collectibles • Mostly Glass Shows & Mail Orders 2515 Cheshire No. 402-423-7426 Evenings Lincoln NE 68512</p>	<p>"HAPPINESS IS" Buddy and Kathy Stultz 3106 Warren Court, Glen Allen, VA 23060 804-672-8102 Specializing in American Made Glass We Buy & Sell, Shows & Mail Order</p>	<p>THE MUTED SWAN ANTIQUES 5486 Peachtree Rd. Chamblee, GA 30341 Heart of Chamblee Antique Row Specializing in Cambridge, Heisey and Fostoria Bill & Pat Miller 404-451-7620</p>
<p>Milbra's Crystal Buy & Sell Replacement and Matching Specializing in: Cambridge Milbra Long (817) 645-6066 Fostoria Emily Seate (817) 294-9837 Heisey PO Box 363, Rio Vista, TX 76093 and others</p>	<p>BUY-SELL (513) 390-3617 Taste of Honey Glassware - Collectibles Clarke West 4888 Brannan Dr. E. Carole West Springfield, OH 45502</p>	<p>ARMORY ANTIQUES 168 West Main Street Plain City, OH 43064 QUALITY THINGS Cambridge, Heisey, China, Silver, Furniture Mon-Sat 10-5 VISA/MC 614-873-4890</p>
<p>THE GLASS URN 456 West Main Street, Suite G Mesa, AZ 85201 602-833-2702 Mail Order Shows Open Shop CAMBRIDGE, FOSTORIA, HEISEY, ETC.</p>	<p>ANTIQUES ON THE MALL SPECIALIZING IN CAMBRIDGE GLASS Bogart's - Bldg #3 - Norwich, OH Virginia Bennett 614-432-4483 64183 Warne Drive, Cambridge, OH 43725</p>	<p>GATEWAY ANTIQUE MALL, INC. JUST NW OF MINNEAPOLIS-ST PAUL, MN Next to Super 8 in Rogers, MN (I-94/I01 Intersection) 85 Dealers 7 Days, 10-6 612-428-8286 ELAINE STORCK, DIRECTOR</p>
<p>ETTELMAN'S DISCONTINUED CHINA & CRYSTAL Cambridge a Speciality P.O.Box 6491-CB Corpus Christi TX 78466 Phone 512-888-8391 Include S.A.S.E.</p>	<p>D & D ANTIQUES Columbus, Ohio Dick Slifko SHOWS ONLY</p>	<p>RONI SIONAKIDES 6565 W. Herbison Rd. DeWitt, MI 48820 517-669-5981 Fostoria, Tiffin, Duncan, Cambridge</p>
<p>THE GLASS CUPBOARD P. O. Box 652 West End, North Carolina 27376 Marcia Ellis Cambridge, Duncan, Heisey 910-673-2884 Shows, Mail Order</p>	<p>JUDY'S ANTIQUES Judy Bennett 422 S. Ninth Street (Corner of Jefferson) Cambridge, Ohio 43725 BUYING Ph.614-432-5855 SELLING CAMBRIDGE GLASS MY SPECIALTY</p>	<p>MCKENZIE'S ANTIQUES & COLLECTIBLES 14700 Detroit Avenue Lakewood, Ohio 44107 (216) 521-2652 (216) 221-9862 (216) 348-3127</p>
<p>ELEGANT GLASSWARE Barbara & Cindy Brock Rt. 1, Box 66AC, Callands, VA 24530 804-724-6762 Cambridge - Heisey - Duncan - Fostoria</p>	<p>GREEN ACRES FARM 2678 Hazelton Etna Rd., Pataskala, OH 43062 (State Route 310 North) Sat & Sun 1-7 PM 614-927-1882 Antiques, Crystal Glass and Collectibles</p>	<p>CRYSTAL LADY 1817 Vinton St., Omaha, NE 68108 Joann D. Hagerty Bus. 402-341-0643 Res. 402-391-6730 Specializing in Elegant Glass & Collectibles</p>
<p>ASK Specializing in Cambridge. Wide variety. Booth #14 in the Antique Mall of Boswell 90 Miles south Chicago, right on U.S. 41. 7 days a week 10-5, except Sun. 12-5 (317) 869-5525</p>	<p>FLORENCE SOLITO 54 Old Stafford Rd, Tolland CT 06084 Stock All Elegant Glassware Mail Order Since 1978 Send Wants 203-872-3294 Satisfaction Guaranteed</p>	<p>YOU CAN ADVERTISE YOUR ANTIQUE SHOP HERE!</p>
<p>MICHAEL KRUMME Cambridge • Heisey • Fostoria • Duncan Miller • Paden City New Martinsville • Fenton • Tiffin • Imperial • Morgantown I search - Send detailed want list - all are kept on file PO Box 5542 Santa Monica, CA 90409</p>	<p>REMEMBRANCES 7597 Daphne Dr., No. Syracuse NY 13212 Shirley S. Ladouceur 315-458-5297 ANTIQUES and COLLECTIBLES MAIL ORDER SHOWS APPOINTMENTS</p>	<p>MARGARET LANE ANTIQUES 2 E. Main St., New Concord, OH 43762 Lynn Welker 614-826-7414 Cambridge Glass Matching Service Hours Mon-Fri 10-12AM, 1-5PM or by Appointment</p>
<p>GLASS RESTORATION BRILLIANT DON & LYNNE CRYSTAL WORMLAND ELEGANT MT. CLEMENS, MICH DEPRESSION 810-468-3519</p>	<p>YOU CAN ADVERTISE YOUR ANTIQUE SHOP HERE!</p>	<p>YOU CAN ADVERTISE YOUR ANTIQUE SHOP HERE!</p>



THE
DEXTER CITY ANTIQUE MALL
WELCOMES
THE
1995 NATIONAL CAMBRIDGE GLASS
CONVENTIONEERS!

IN APPRECIATION FOR YOUR PREVIOUS
SUPPORT
WE WILL BE HOLDING AN
OPEN HOUSE
ON
FRIDAY, JUNE 23, 1995
FROM
8:30 A.M. TO 6:00 P.M.

WE HAVE REQUESTED OUR DEALERS
BE
PRESENT TO ENHANCE YOUR SHOPPING
PLEASURE.

REFRESHMENTS WILL BE SERVED. . .
(OPENING EARLY FOR YOUR
CONVENIENCE.)

THANK YOU FOR YOUR
CONTINUED PATRONAGE.

Limited Promotion

\$49 Crystal Ball Back Issue Sale

Our backlog is your benefit! The Paper Room at the NCC Museum is overflowing with back issues of our Club Newsletter. We need to clear room to store more of the historical documents regarding the Cambridge Glass Company. We want this room accessible to members.

From April through June, we are offering *complete sets* of the Crystal Ball from the start of the Club for the incredible price of \$49 (plus shipping). Most newsletters will be the original, some may be photocopies.

All proceeds from this sale benefit the NCC Museum Fund. **Call or write the Museum. Act now and pick them up at the Convention.**

Membership Renewal Notice
This is your last issue of the CRYSTAL BALL, if the date on your address label reads 5-95.
Please renew now!

National Cambridge Collectors, Inc.
PO Box 416
Cambridge, Ohio 43725-0416

**Forwarding and Return
Postage Guaranteed**

FIRST CLASS MAIL
U.S. POSTAGE
PAID
Cambridge, Ohio
43725
Permit No. 1

**Please deliver promptly, dated material.
FIRST CLASS MAIL**