

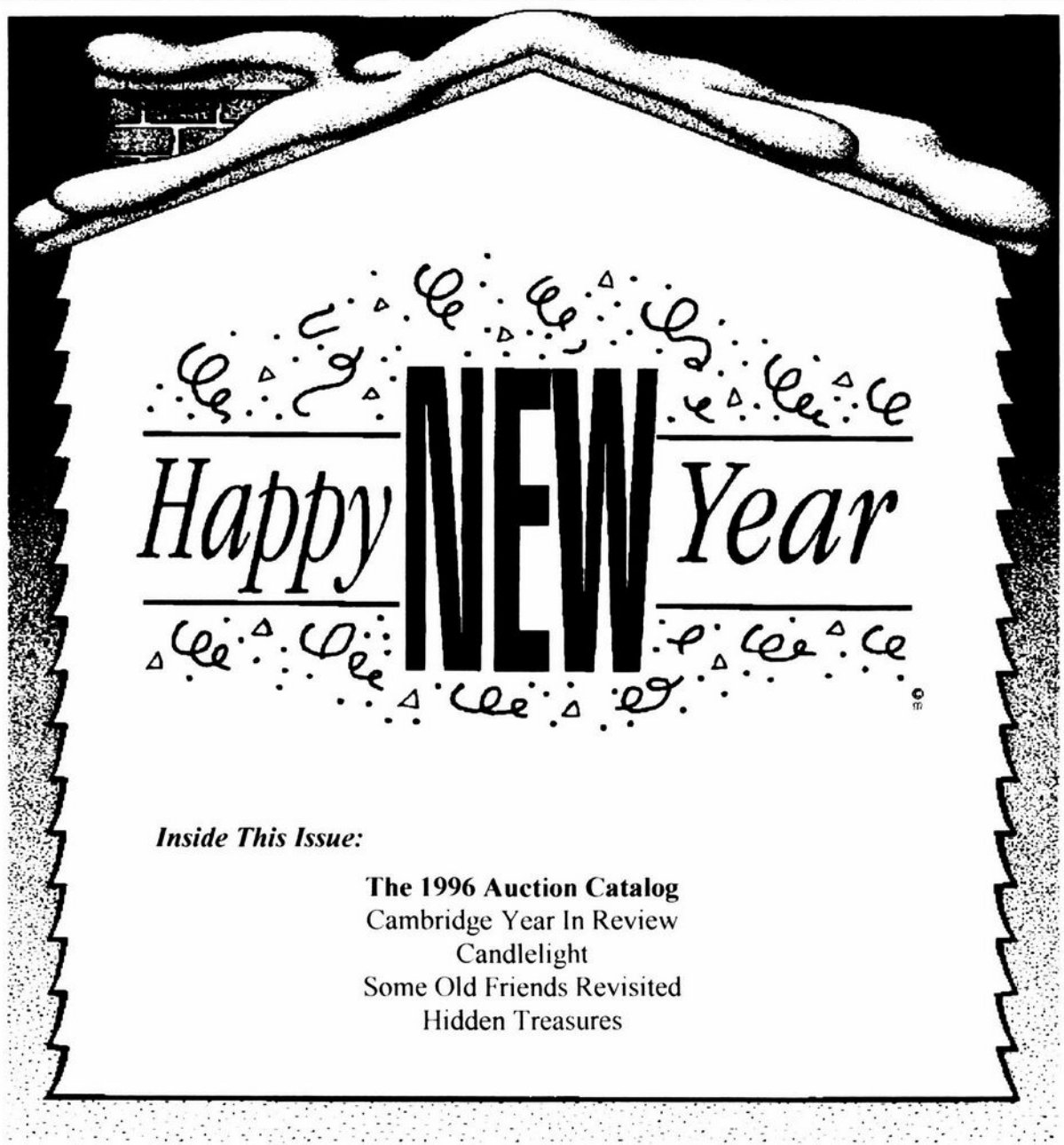


Cambridge Crystal Ball

Published monthly by National Cambridge Collectors, Inc.
to encourage and report the discovery of the elegant and boundless product of the
Cambridge Glass Company of Cambridge, Ohio

Issue No. 273

January 1996



Inside This Issue:

- The 1996 Auction Catalog**
- Cambridge Year In Review
- Candlelight
- Some Old Friends Revisited
- Hidden Treasures

Cambridge CRYSTAL BALL

Official publication of National Cambridge Collectors Inc., a non-profit corporation with tax exempt status. Published once a month for the benefit of its members. All rights reserved; reproduction in whole or in part without written permission of NCC and the author is prohibited.

Membership is available for individual members at \$17.00 per year and an additional \$3.00 for associate members (12 years of age and older, residing in the same household). Of the master member dues, \$12.00 is credited to a one-year subscription to The Crystal Ball. All members have voting rights, but only one Crystal Ball per household. **Effective 1/1/96, multi-year memberships are available: 2 years for \$33.00, 3 years for \$49.00.** Back issues of the CRYSTAL BALL are available for \$1.00 each or 12 issues for \$10.00. Complete sets for \$79.00.

1995-1996

OFFICERS AND COMMITTEE CHAIRPERSONS

President	Richard D. Jones
Vice President	Mark A. Nye
Secretary	Bud Walker
Treasurer	Charles Upton
Sergeant-at-Arms	Tarzan Deel
Acquisitions	Joe Andrecjak
Budget & Finance	Mark A. Nye
By-Laws	Charles Upton
Long-Range Planning	Tarzan Deel
Membership	Jeff Ross
Museum Expansion/Relocation ..	Willard Kolb, J.D. Hanes
Museum Facilities	Carl Beynon, Joe Miller
Museum Interior	J.D. Hanes
Non-Glass Items	Tarzan Deel
Nominating	Joy McFadden
Program	Open
Projects	Tarzan Deel
Publications	Mark A. Nye
Publicity	Cynthia A. Arent
Study Group Advisor	Marybelle Moorehead
1996 Convention	Mark A. Nye, Bud Walker
1996 Auction	Lynn M. Welker
1996 Antique Show	Mary Beth Hackett, Joy McFadden
1996 Flea Market	Mike Arent
CRYSTAL BALL Editor	Lorraine Weinman
Managing Editor	J.D. Hanes

National Cambridge Collectors Inc. owns and operates the **Museum of Cambridge Glass** at 9931 E. Pike Road, Cambridge, Ohio. Open April through October 9AM-4PM Wednesday through Saturday and Noon-4PM on Sunday. March open Friday-Sunday. Closed November-February, Easter, July 4th.

ADVERTISING RATES

Display Rates (camera ready ads preferred)

<u>Unit</u>	<u>Members</u>	<u>Non-Members</u>
Full Page	\$45.00	\$60.00
3/4 Page	\$35.00	\$50.00
1/2 Page	\$25.00	\$35.00
1/4 Page	\$15.00	\$25.00
1/8 Page	\$10.00	\$15.00

Classified Rates

10 cents a word \$2.00 minimum

Abbreviations and initials count as words. Type sizes cannot be mixed in classified ads. **Payment in full must accompany all ad copy.** Contact Editor for copy assistance.

Dealer Directory

Six Line Maximum \$24.00 for 12 month contract

Cambridge CRYSTAL BALL assumes no responsibility for items advertised and will not be responsible for errors in price, description, or other information.

Advertising copy, letters, articles, must be received by the 5th of preceding month to be considered for publication in the next issue.

Please address all correspondence (include SASE) to:

National Cambridge Collectors, Inc.
P.O. Box 416
Cambridge, OH 43725-0416

President Rick Jones	914-631-1656
Vice President Mark Nye	517-592-6200
Secretary Bud Walker	609-965-2413
NCC Museum: Phone and Fax	614-432-4245

Please notify us immediately of any address change.

Opinions or information stated in any signed article or letter printed in the CRYSTAL BALL are those of the author and may not agree with National Cambridge Collectors, Inc. The Editor reserves the right to refuse and to edit any material submitted for publication to conform to the editorial style of the CRYSTAL BALL. Members are encouraged to write to NCC and the CRYSTAL BALL sharing their knowledge and questions!

President's Message

Cambridge Year In Review

I know. I know. January columns seem to always be devoted to making resolutions for the New Year. However, since I'm writing this in early December and have barely started Christmas shopping, its very difficult to think about new resolutions. I'd be too likely to dredge up the old ones I said I'd do and still haven't! Maybe next month.

Instead, I thought it timely to take pause and reflect on all this Club has accomplished in the past year.

Our membership remains a little over 1400. We've initiated several new programs targeted to new members and many more are on the drawing board.

We established a special building fund at members' request and are starting to get in dedicated donations. We'll want to make a big push in this area in 1996 so that we can make our dream of a new museum a reality.

New investments are in place to get our current club funds to work harder for us. Treasurer Charles Upton set up a Templeton World Fund account for our building fund and has increased our Money Market Fund yield significantly through longer-term, yet flexible CD's.

We began examining our insurance coverage and increased our liability for the Convention and Auction. We continue to seek ways to save the members money while increasing protection.

We took inventory problems and turned them into assets. Specifically, our Museum Paper Room was overflowing with back Crystal Balls. We created a Back Issue sale and sold over 70 sets, raising in excess of \$3,000 for the Museum Fund. Also, we reduced prices on several resale items like old convention favors, and started a Museum Mart in the Crystal Ball. Sales in just two months have been terrific!

Our club made it through another year convincing J.D. Hanes to stay on as Museum Docent. He also handled extra responsibilities with the Crystal Ball.

We introduced the second in our series of Prism

sign projects, Mint Julep. As of this writing we are near a sell-out. Congrats and thanks to Tarzan Deel and the others who helped on this project.

Our 1995 Auction was one of the best, if not the best, ever. That is, until the 1996 Auction. Check out the auction catalog in this issue. Lynn Welker is very pleased about the selections and will have a more detailed preview in the February issue.

We welcomed a new Crystal Ball Editor in Lorraine Weinman. My thanks to Mark Nye and J.D. Hanes for their help in this transition year. Many members have commented on the nice fresh look. It will get even better in 1996.

Speaking of Mark, he introduced the 1940 catalog reprint and continued to get phenomenal sales of the Caprice book, launched in 1994. Our Rose Point book is also now in another printing.

We said our thanks to Joy McFadden for four fabulous years as President of this Club. She helped bring great stability to this organization and set in motion many new initiatives.

We asked you to take a greater role. We wanted this club to be more inclusive. And, you responded. We have many new volunteers and continue to get great suggestions. Please keep it up!

N.C.C. hit the road ... promoting our club at the Great Northeast Glass Show in White Plains N.Y. We signed up new members, sold books, created goodwill, and met new friends. We are very open to more ideas like this in 1996.

And, sadly, we said goodbye to too many members, friends, and family who passed on in 1995. Their thoughts will always be with us and their dreams live on.

Let us never stop dreaming. For that elusive piece of glass, the enhanced knowledge, the new museum. And for all the good things you're dreaming of, I say good luck and Happy New Year.



CANDLELIGHT

By Mark A. Nye



We continue with the series of articles that are revisiting topics covered in previous columns. As is true for other columns in this series, various versions of this article on Candlelight have previously appeared in the Crystal Ball, The DAZE and the now defunct Glass Review.

Candlelight was one of the eight plate etchings in the Cambridge line at the time the January 1, 1940 catalog was issued. Its first documented appearance is on a drawing that accompanied an application for a design patent covering No.3114 stemware submitted in January 1936. It was probably introduced to the buying public in 1936 and then remained in the Cambridge line until the early 1950s. The last Cambridge price list to include Candlelight was issued in September 1950. The next known price list is dated February 1953 and it makes no mention of Candlelight. Hence the line might have been discontinued anytime during the period between September 1950 and February 1953. After the company was sold in 1954 and the new owners resumed production in 1955, Candlelight was available on No. 3776 stemware through special order only; no open stock of the etching was offered.

From circa 1936-37 comes this text for a Cambridge advertisement:

"Modern table linens, china and silver require glassware that blends into the general motif of the new fashions. Candlelight does that perfectly, it is modern without being modernistic and classic without being entirely Grecian. Its thin but sturdy stem, flared brim, delicate etching and long curving lines, are all created in the new spirit of modern table settings. Candlelight also represents a new treatment in etching, lightly done, it gives a polished appearance, very different and delightful. A complete table service or a single decorative or useful piece will be highly cherished. This pattern will be available in open stock for many years, affording opportunity for additions and replacements."

The description is that of the etching on No.3114 stemware, and not the etching alone.

Sometime after January 1937 seven catalog pages illustrating Candlelight were issued. Later, with some minor reworking these same pages became the Candlelight section of the January 1940 Cambridge catalog. The 1940 price list has a total of 128 listings for Candlelight on crystal blanks and 99 listings for gold encrusted Candlelight. The June 1949 catalog and price list has a combined total of 89 listings for Candlelight on crystal blanks but none for gold encrusted Candlelight on crystal blanks.

This writer is not aware of Candlelight on colored blanks other than Crown Tuscan. The January 1940 price list offered 22 items in Crown Tuscan etched Candlelight. Of these, 15 were vases, three were candlesticks, the other four were a bowl, covered candy dish, relish and covered urn. By 1949 the number of pieces Crown Tuscan etched Candlelight had been reduced to seven vases, two candlesticks, bowl, relish and covered candy box.

From the time of its introduction in the 1930s until the late 1940s, the primary blank used for Candlelight was the No. 3400 line. When the 3400 line was replaced by the Corinth or 3900 line during the 1940s, it became the blank of choice for Candlelight. Blanks from the 3400 line etched Candlelight include two salad plates, bread and butter plate, cup and saucer, sugar and cream, salt and pepper shakers, a number of serving bowls and plates. However, there is not a dinner or service plate from the 3400 line etched Candlelight but one was produced when the Corinth or 3900 line replaced the 3400 line. Listed in the June 1949 price list, the Candlelight dinner continued to be offered until the line itself was discontinued as was the Corinth cup & saucer, bread & butter and salad plates.

(Continued on Page 5)

During the 1940s, blanks from the Pristine, Gadroon and Tally Ho lines were etched Candlelight. However, the number of blanks from these lines never equaled the amount of 3400 blanks used.

Candlelight is found on three stemware lines, Nos. 3111, 3114 and 3776. The latter line was introduced circa 1941 and no doubt was first etched Candlelight at that time. Introduced in the 1930s, Nos. 3111 and 3114 stemware were probably first etched Candlelight at the time of the etching's debut. No. 3114 stemware was discontinued during the 1940s while the other two lines continued until the etching itself disappeared from the Cambridge catalog.

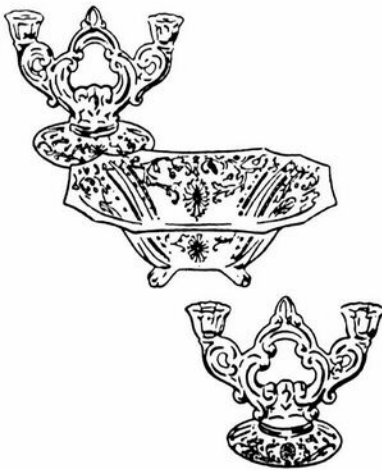
Other items of interest to Candlelight collectors are the true doulton jug, footed decanter, 2 ounce sherry, cigarette holder, 11 flat tumblers, icers, cocktail shaker, hurricane lamps as well as miscellaneous bowls, plates and vases. Just to accumulate one each of the flat tumblers, much less any type of a service, will change the patience of most collectors.

Illustrating this article are: an advertising mat from 1936, a segment from a Candlelight etching plate and several pages from the 1949 Cambridge catalog showing, among other items, Candlelight on Corinth blanks.



ETCHED CANDLELIGHT

3114—Goblet



ETCHED CANDLELIGHT

3400/4/647—Console Set



ETCHED APPLE BLOSSOM



Candlelight



3900/54
10 in. 4 Ftd. Bowl, flared



3900/62
12 in. Ftd. Bowl, flared



3900/67
5 in. Candlestick



3900/65
12 in. 4 Ftd. Oval Bowl



3900/72
6 in. 2 lite Candlestick



3900/74
6 in. 3 lite Candlestick



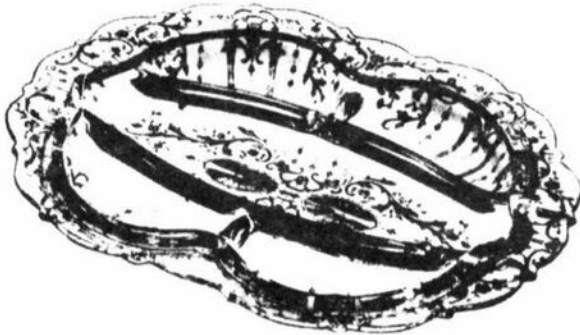
3900/100
6 oz. Oil, g. s.



3900/111
4 pc. Mayonnaise Set



3900/115
13 oz. Tumbler



3900/120
12 in. 5 part Celery & Relish

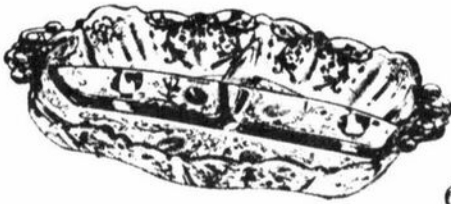


3900/123
7 in. Relish or Pickle

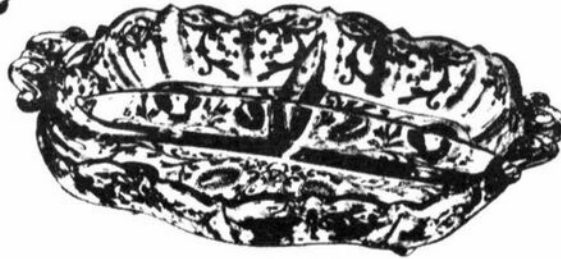


3900/124
7 in. 2 part Relish

Candlelight



3900/125
9 in. 3 part Celery & Relish



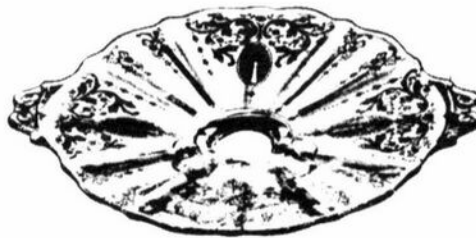
3900/126
12 in. 3 part Celery & Relish



3900/129
3 pc. Mayonnaise Set



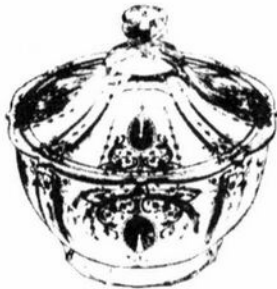
3900/130
7 in. 2 handled Ftd. Bonbon



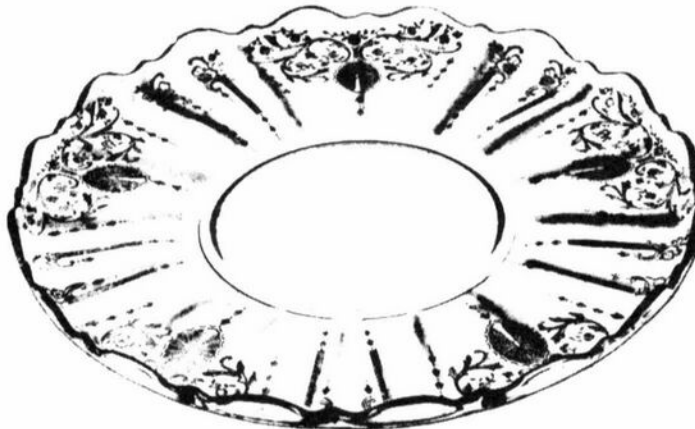
3900/131
8 in. 2 handled Ftd. Bonbon Plate



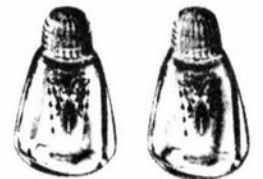
3900/136
5 1/2 in. Comport



3900/165
Candy Box & Cover



3900/166
14 in. Plate, r. e.



3900/1177
Salt & Pepper Shaker (doz. pr.)



3900/671
Ice Bucket with Chrome Handle



968
2 pc. Cocktail Icer



3121
5 1/2 in. Blown Comport



274
10 in. Bud Flower Holder

Some Old Friends Revisited

By Neil Unger

Have you ever run up behind a friend, tapped them on the shoulder and guess what??? "Excuse me; I thought you were somebody else." You walk or slink away, very embarrassed. But you say ... they looked like - a copy? A reissue? A look-alike, well, whatever.

The world of glass imitates life - with the advent of reissues/reproductions, in my case, copies of the Cambridge Flower Frogs. At this time, there are three on the market: the 6 1/2" and 11 1/2" Bashful Charlotte and the 8 1/2" Draped Lady. The Bashful Charlotte is bent over as if having a gas attack; differing from the Draped Lady that stands erect and has no such "discomfort."

Our story begins sometime after World War II when Cambridge decided to change the bases of three popular flower frogs. The reason for the change was probably due to excessive wear, but nobody knows for sure. The bases were originally smooth around the edge. The base was then re-tooled, making a ribbed style around the edge.

There are some glass "historians" that might indicate that Imperial Glass also changed some of the molds. That is, changed the edge from smooth to the ribbed style. They did, however, redesign the little 6 1/2" Bashful Charlotte for a company called Mirror Images out of the state of Michigan. Imperial took the mold and bore out the entire base, leaving it hollow, no holes to put the flowers into. They made it in a multitude of colors and gave it a new name; forever to be known as Venus Rising. Her "sex" change was complete and final.

Her big sister took a different route as she was reproduced by the Summit Art Glass Co. in Vaseline, Cobalt and an opaque blue in the same mold with the existing ribbed base. These are the only colors that I'm personally aware of. However, I can't be at every mall or antique show, so there could have been more colors made. I had not seen an 11 1/2" Bashful in a long time until yesterday when I was surprised to see a very light blue with a hollowed out base just like her 6 1/2" sister. With that change, the original reproduction becomes an oddity, a rarity, if you will. Think about it, a reproduction that could be worth as much as an original or close to it. Unless of course, there are *two* molds and the change was only made to one "twin." It could get to be very confusing and at this hour I can't take anymore confusion. Maybe a phone call to the Summit Art

Glass Co. might help to clear all this up? The bottom line is: Assuming there is only one mold, the 11 1/2" Bashful Charlotte is now in the same condition as her little sister, the 6 1/2". Good Luck!

The 8 1/2" Draped Lady was reproduced a few years ago by the Viking Glass Co., in Cobalt, Ruby, and a Lavender-type. None of these colors were ever made by the Cambridge Glass Co. They are pretty to look at, but lack the elegance, maturity and the rarity of the original ladies. So, if your taste runs to the young, pretty, and perky ... these girls are just for you and your collection. However, if you prefer elegance, maturity and the generations of experience, plus, the factor of built-in rarity, then be patient; the right lady will eventually pass by and you will be rewarded with an everlasting pride of ownership, friendship, and be happy to add her to your collection of ladies.

A glance at the clock reminds me it is now quite late in the evening as I finish this article. The house is very quiet and the "ladies" might be listening as they are all residing in the next room. So, I must not talk too loud when I proofread this:

As always, when glass collectors gather and spin their tall tales of what, when, how old, and how much, you can't help but catch the excitement. The "I" wonders: How many were made? How many in *that* color? Did they make *that* shape? Is it a one of a kind? A sample? So many unanswered colors, but, if you remember two "ungerisms": never say never, and the only thing for sure about this "business" is there is nothing for sure about this "business," you'll be OK.

And finally, the glass itself - our ladies - Who were the past owners? What part of the country did they come from? What style house did they live in? What kind of families? *Their* secrets - the good times, the sad times. Yes, there are extraordinary stories that our ladies "whisper" in the still of the night and, if you are very quiet, you too can hear them, unless you're a cynic or a skeptic. They will not communicate unless you are a true believer.

You have a very limited amount of time, so make good use of it. Sit back, relax, close your eyes and listen. Let your imagination take over and repeat: I believe, I believe, and PRESTO! For after you depart this good earth (or just decide to sell them), they will move on to another owner and will continue to whisper their stories in the still of the night.

Good night,

Neil Unger

**1996
NATIONAL CAMBRIDGE COLLECTORS, INC.
BENEFIT AUCTION INFORMATION**

AUCTIONEER: Craig Connelly **ADMISSION:** \$2.00

LOCATION: Pritchard Laughlin Civic Center
Glenn Highway (U.S. 40 West at I-70)
Cambridge, Ohio

DATE: March 2, 1996 **PREVIEW:** 9:00 AM **AUCTION:** 10:00 AM

All glass guaranteed to be Cambridge. The auction committee has checked all glass to be auctioned. All pieces should be examined immediately and returned before five items are sold if the article is not as represented. Any damage is indicated in this Catalog. If no color is indicated, the item is Crystal.

TERMS: Cash or check with proper identification, day of sale. All sales are subject to 6 1/2% Ohio Sales Tax. Dealers may sign an exemption form if the items purchased are for resale, in which case, no tax will be charged.

CATALOG INSTRUCTIONS: The number in parenthesis () at the end of each listing indicates the amount of items to be sold. Bidding will be by the piece if a number occurs at the end or as a lot if pair, set or lot is indicated. You may buy any number of an item if a number appears at the end of an item description. Colors refers to Colors in Cambridge by NCC for reference.

MAIL BIDS: All bids must be accompanied by a check for each lot. Bids will be executed secretly, and the bidder will pay only the final auction price. Please include a stamped, self-addressed envelope with bids. You will be notified if you are not the successful bidder, and your check(s) will be returned and the final selling price will be noted. Ohio residents, please include 6 1/2% Ohio Sales tax or your Vendor's number. If you wish to have the pieces shipped to you, please include a separate check for adequate postage. All pieces will be shipped via UPS the week immediately following the auction. Please include your UPS delivery address(not a P.O. box). All items are sold in perfect condition unless noted, and you may expect to receive them that way if you mail bid. All items will be carefully checked again before they are shipped. Refund checks for bid overages will be returned immediately. For additional information phone (614) 826-7414.

Bids must be received by March 1 to be eligible. Mail bids to: Lynn Welker, 2 East Main, New Concord, Ohio 43762. Make checks payable to: National Cambridge Collectors, Inc.

MOTEL RESERVATIONS: Phone the Cambridge/Guernsey County Visitors & Conventions Bureau at 1-800-933-5480 for a listing of motels. Food will be available on the premises the day of the auction. **QUARTERLY MEETING:** Friday March 1, at 7:30 PM. An informative meeting and preview of the auction glass will be presented. Bring a friend and your Show and Tell glass to the meeting.

Additional auction catalogs are \$1.00 postpaid or included with your admission.

1. _____ #1066 Amber 7" ivy bowl, Crystal stem & foot (stain ring inside)
2. _____ #1137 Bluejay 5 1/2" flower figure
3. _____ #510/1537/1633 3 pc. vase set (vase, nappy, ball) (2 sets)
4. _____ #842 Amber Cleo etch 12" Decagon bowl, #627 matching 4" candlesticks and #2899 Amber 5" flower block (set)
5. _____ Topaz Satin Wetherford 7 pc. berry set, enamelled, petal edge (set)
6. _____ #3400/100 76 oz. jug, Sterling Appleblossoms decoration
7. _____ #315 Light Emerald 28 oz. decanter & stopper
8. _____ 6 Farber 3 oz. cocktails (2-Amethyst, 2-Amber, 2-Forest Green), Farber cocktail shaker and tray (set)
9. _____ #1431 Amber 8" bulb vase
10. _____ #119 Amber 7" basket (11" to top of handle) Amber handle, signed
11. _____ #1402/100 Tally-Ho goblet, Platinum bands trim
12. _____ #3121 10 oz. goblet, unknown floral etch & wide gold decor
13. _____ #1070 Amber 36 oz. pinch decanter (golf ball stopper) & 6 matching 2 oz. tumblers (set)
14. _____ #24 Everglades satin finish sherbets (2)
15. _____ #1236 Ebony 8" keyhole ivy ball, Crystal keyhole stem, (1 small chip at top)
16. _____ #1236 Crown Tuscan 8" keyhole ivy ball
17. _____ #1236 Crystal 8" keyhole ivy ball (chip on top)
18. _____ #1066 Amethyst 3 1/2 oz. tall cocktails (4)
19. _____ #1066 Amethyst 3 oz. low cocktails (1 small foot chip) (4)
20. _____ #31 Mandarin Gold 8" oval shell bowl, 4 footed
21. _____ #3400/119 Amber 12 oz. ball decanter & (6) #1341 Amber cordials (set)
22. _____ #1401 Mandarin Gold 3 1/2 oz. Jefferson cocktails, Cambridge labels (6)
23. _____ #647 Gold Krystal Decagon 2 light candlestick (1)
24. _____ #21 Crown Tuscan Seashell 6" ftd. candy and cover
25. _____ #577 Crystal 8" Horn of Plenty
26. _____ #3400 Forest Green 4" bitters bottle, Farber holder, Cambridge label, no tube
27. _____ #3400/92 Amber 2 1/2 oz. barrels (6)
28. _____ #3400/646 Amber Decagon 5" candlesticks, etch Diane (pair)
29. _____ #3500/15 Crystal individual sugar and creamer (2 pair)
30. _____ #3011 Amber 9" Nude candlestick (chip on candlecup)
31. _____ #3400/156 Royal Blue 12 oz. cordial decanter, Crystal stopper
32. _____ #647 Light Emerald Decagon 2 light candlestick (1)
33. _____ #1066 oval cigarette holder with ashtray foot, cut Achilles
34. _____ #3400/100 76 oz. jug, Sterling Mums decor
35. _____ #4000 Cascade 15" punch bowl, 21" underplate and 12- 5 oz. punch cups, original box (set)
36. _____ #3121/1 Forest Green 5 3/8" tall comport, Crystal stem & foot
37. _____ #17 Dianthus Pink Martha Washington 7 1/2" ftd. fan vase
38. _____ #110 Crown Tuscan 4 1/2 oz. seafood cocktail, dolphin stem
39. _____ #2 Moonlight Blue 4" star candlesticks (pair)
40. _____ #7967 Melody cocktail, cut Rondo
41. _____ #518 Mandarin Gold 8 1/2" Draped Lady flower figure
42. _____ #1321 Forest Green 28 oz. ftd. decanter and stopper
43. _____ #77 Mt. Vernon 6" 2 handled tall comport
44. _____ #3400 Emerald juice pitcher, Farber holder
45. _____ #3 Tuxedo 2 1/2 oz. cocktails, Carmen foot (5)
46. _____ #43 Amber Martha Washington 7 1/2" 3 compt. candy box & cover
47. _____ #3135 Forest Green 2 1/2 oz. ftd. tumbler, etched Appleblossom
48. _____ #1402 Tally-Ho 2 part salad dressing bowl & liner, elaborate Sterling overlay design (set)
49. _____ #3450 Forest Green Nautilus shaker (1) and Crystal center handled tray
50. _____ #3500/108 Ebony 2 1/2" candlesticks, Cambridge label (pair)
51. _____ #1321 Amber decanter, Farber Duchess Lace holder (stopper lavender tinge) and 4-#7966 Amber 2 oz. sherries (set)
52. _____ Moonlight Blue Modern 5 1/2" candy box (spot in lid & bottom)
53. _____ W95 Milkglass 4 1/2" swan, style III
54. _____ #47 Crown Tuscan 9 1/2" Seashell cornucopia vase
55. _____ #317 5 oz. Georgian tumblers: Amber, Peachblo, Carmen, Amethyst, Moonlight, Gold, Royal Blue (flake), Emerald (crack) (1 each)

56. _____ #319 Bluebell 9 oz. Georgian tumbler
57. _____ #319 Moonlight Blue 9 oz. Georgian tumbler
58. _____ #319 Light Emerald 9 oz. Georgian tumbler
59. _____ #319 Peachblo 9 oz. Georgian tumbler
60. _____ #319 Carmen 9 oz. Georgian tumblers (2)
61. _____ #319 Mandarin Gold 9 oz. Georgian tumbler
62. _____ #319/B/2 Smoke Georgian basket (Smoke handle)
63. _____ #319/B/3 Emerald Georgian basket (Crystal handle)
64. _____ #319/B/2 Mandarin Gold Georgian basket (Gold handle)
65. _____ P306 Pristine 6" candy box, satin inside, gold trim & gold stars decor, unusual
66. _____ #3797/67 Cambridge Square 4 1/2" cupped candlesticks, sandblasted finish, gold star decor, unusual
67. _____ #15 Mt. Vernon 4 1/2" toilet box and cover, round
68. _____ #1330 Carmen 5" Sweet Potato vase
69. _____ #279 Amethyst 13 1/2" ftd. vase (very large)
70. _____ #3450/1130 Ebony 12" Nautilus ftd. vase
71. _____ #61 Everglades 10" bowl & (2) #3-6", 2 light candelabrum (1 leaf chipped)(set)
72. _____ #12 Everglades 13" Tulips bowl & #2 1 light candlesticks (all satin finish)(set)
73. _____ #1095 Ebony Decagon sugar & creamer on center handled tray (set)
74. _____ P499 Ebony Calla Lily candlestick (1)
75. _____ #8 Crown Tuscan 11" Seashell salad bowl, exceptional color
76. _____ Primrose 4" ball ivy vase
77. _____ #3790 Lily of the Valley cut (2) goblets, (1) iced tea, (2) sherbets
78. _____ #124 Martha 10" dinner plates, scratched (12)
79. _____ #1044 Light Emerald 10 1/2" swan, Style I, signed
80. _____ #1040 Light Emerald 3" swans, Style I, (minor chip on 1), signed, (4)
81. _____ #31 Heatherbloom Mt. Vernon 4 1/2" fruit saucer (scratched) & #19 plate (set)
82. _____ #3011/12 Nude stem 3 oz. wine, etched Vichy, chip on base, VERY RARE
83. _____ #7 Forest Green Mt. Vernon cups & saucers, signed (6)
84. _____ #5 Forest Green Mr. Vernon 8 1/2" plates (scratched) (6)
85. _____ Cambridge glass doorknob set with original brass fittings
86. _____ #3500 Gadroon dessert set: (8) #3500/1 footed cups and saucers, (8) #3500/4 7 1/2" plates (set)
87. _____ #496 Mocha 12 oz. Tall Joe glass, shammed
88. _____ #1110 Light Emerald Jello mold
89. _____ Cambridge glass 2 oz. measure
90. _____ #3750 Rock Crystal cut 5 oz. oyster cocktail
91. _____ #96 Mulberry half pound ftd. candy jar & cover, signed
92. _____ #3400/48 Mandarin Gold 13" bowl, 4 ftd., crimped shallow
93. _____ #1203 Heatherbloom 7 oz. old fashioned, shammed, signed (2)
94. _____ #1630 Amber 12 oz. wide optic tumblers (2)
95. _____ SS#15 Milkglass 6" Seashell comport, mint gold trim
96. _____ SS#30 Crown Tuscan 9" Seashell roses.(slight gold wear)
97. _____ #1237 Carmen 10" vase, Crystal keyhole stem & foot
98. _____ #498 Moonlight Blue Crackle 12 oz. tumbler
99. _____ #1 Carmen jigger stopper, RARE
100. _____ #880/8701 Light Emerald 5 pc. game set, card suits on holder (set)
101. _____ #146 Peachblo Wetherford covered comport
102. _____ #274 Ebony 10" bud vase, etch #742, beautiful gold border decor
103. _____ Rubina 10" Honeycomb cupped bowl, signed
104. _____ #1236 Forest Green 8" ivy ball, Crystal keyhole stem and foot
105. _____ #3011 Crown Tuscan 9" Nude candlestick
106. _____ #3500/26 Peachblo Ram's Head fruit basket
107. _____ Primrose perfume lamp, unusual plated cast base, original fittings & Colonial Quality box
108. _____ Rubina 10 1/4" Block Optic vase (mostly blue & red color)
109. _____ #1 Light Emerald Keg Set w/5 tumblers, Ebony tray & base (chip inside keg top)
110. _____ #2500 Chesterfield 8" square nappy
111. _____ #2631 Marjorie Nearcut water carafe

112. _____ #2631 Marjorie Nearcut 12" across, deep punch bowl, very unusual shape (minor pattern flake)
113. _____ #2631 Marjorie Nearcut sherbets (2)
114. _____ #2631 Marjorie signed Nearcut 6" plate
115. _____ #2631 Marjorie signed Nearcut 6 1/4" club dish (edge rough)
116. _____ #2635 Fernland Nearcut 6" tall flared vase
117. _____ #2635 Fernland Nearcut 8" ftd. comport, "D" shape
118. _____ #2635 Cobalt Fernland Nearcut toy creamer
119. _____ #2651 Feather Nearcut wines (2)
120. _____ #2651 Feather Nearcut cracker jar and cover
121. _____ #2651 Feather signed Nearcut 6 oz. cruet
122. _____ #2660 Wheat Sheaf 7 piece toy punch set (usual mold rough inside cups)
123. _____ #2660 Wheat Sheaf signed Nearcut tumbler
124. _____ #2699 Green Carnival Buzz Saw signed Nearcut water pitcher (2 lg. base chips)
125. _____ #2699 Green Carnival Buzz Saw Nearcut tumblers, (1 base chip)(1 top nicks)(2)
126. _____ #2780 Emerald Inverted Strawberry signed Nearcut tumblers, good gold decor (2)
127. _____ #3200 Cut Wild Rose deep punch bowl, foot & 13 matching 5 oz. punch cups (set)
128. _____ #15 Peachblo Narrow Optic decanter & (6) 3 oz. matching ftd. whiskies, etch #703, gold encrusted (set)
129. _____ Light Emerald Wide Optic ftd. lemonade pitcher & (6) matching mugs, sponged acid and gold trim (slight wear) (set)
130. _____ #3011 Forest Green 4 1/2 oz. Nude claret
131. _____ #1402/100 Carmen Tally-Ho cocktail, gold silk screen D/1007
132. _____ Cambridge Glass Co. Old Home Week paperweight, dated 1921
133. _____ Rubina Honeycomb 8" tall comport, 8 1/4" across wide flat edge, exceptional color
134. _____ #39 Rubina 11" wide optic bowl, super color
135. _____ #1044 Crystal 10 1/2" swan, Style I, signed
136. _____ #1138 Seagull 8 1/2" flower figure
137. _____ #1203 Forest Green 7 oz. old fashioned, signed, with #1 muddlers (4 sets)
138. _____ Moonlight Blue Modern 10 1/2" flat bowl and candlesticks (set)
139. _____ #1236 Amber 8" ivy ball, Crystal keyhole stem and foot
140. _____ #119 Ebony 7" across basket, 11" to top of handle
141. _____ #1955 Sunset 14 oz. flared tumblers, hard to find color (2)
142. _____ #129 Emerald Cascade 3 piece mayo set (crystal ladle)
143. _____ #3400 Amethyst 64 oz. jug, early label, acorn finial, RARE
144. _____ #1675 Eagle handle 8" 3 part relish, unusual Cranberry flashed trim in ridges
145. _____ #1956/1 Moonlight Blue 10" hambone ashtray (use marks on bottom)
146. _____ W131 Milkglass 7 1/2" Seashell vase (Snail)
147. _____ #1043 Crown Tuscan 8 1/2" swan, Charleton Gardenia decoration & mint gold, RARE
148. _____ #1040 Ebony 3" swan, Style II, signed
149. _____ #16 Windsor Blue 7" Seashell comport, signed
150. _____ W120 Milkglass Dresden figure (chip inside under base)
151. _____ #3011/25 Crown Tuscan Nude ivy bowl, very fine color
152. _____ #9 Pearl Mist Seashell 13" salad bowl, shallow
153. _____ #15 Pearl Mist Seashell 6" comport
154. _____ #17 Pearl Mist Seashell 9" 3 toed bowl (small foot flakes)
155. _____ #3400/91 Crown Tuscan 8" 3 pt. relish, gold encrusted Portia
156. _____ #3011/25 Carmen Nude stem ivy ball (stain at mouth)
157. _____ #3011/25 Amber Nude stem ivy ball
158. _____ #1222 Gold Krystol Turkey and cover, RARE
159. _____ #518 Mandarin Gold 8 1/2" Draped Lady flower figure
160. _____ #1715 Mandarin Gold reversible ashtray/candlesticks (2 pair)
161. _____ #3400/2 Gold Krystol 12 1/2" flip bowl, signed (scratched)
162. _____ #3121 9" candlesticks, Sterling weighted bases (pair)
163. _____ #169 Azurite mayo comport, underliner and ladle (set)
164. _____ #104 Carmen 12" Mt. Vernon 5 part celery & relish
165. _____ #35 Crystal Mt. Vernon 8" candlesticks (pair)
166. _____ #1402/1 Carmen Tally-Ho 18 oz. goblets (2)
167. _____ #518 Peachblo (satin finish) 8 1/2" Draped Lady flower figure
168. _____ #3900/129 Smoke Corinth mayo set with Crystal ladle, unusual

169. _____ #82 Ivory 10" vase, handpainted decor
170. _____ #107 Peachblo 76 oz. covered pitcher & (4) #1630 Peachblo 12 oz. tumblers, gold encrusted floral bands (nick inside lid) (set)
171. _____ #637 Satin 3 1/2" candlestick, Decalware floral decoration (1)
172. _____ #1042 Crystal 6 1/2" swan, Style III
173. _____ #3078 Forest Green 32 oz. decanter (stain) Crystal stopper
174. _____ #680 Crystal covered dresser compact & cover
175. _____ #676 Peachblo 11 1/2" flip bowl, etch #725 (1 acid slip), signed
176. _____ #3797 Cambridge Square 9 1/2" across, deep bowl Vanadium Corp. advertising deep plate etched
177. _____ #156 Martha 10 1/2" oyster plate
178. _____ #168 Crystal 8 1/2" asparagus plates (2)
179. _____ #3400/78 Amber pitcher cocktail shaker (no lid)
180. _____ #441 Light Emerald 10 1/2" lg. compote, etched "Hunt Scene" (acid slip on foot)
181. _____ #3400/65 Gold Krystol 14" chop plate etched Gloria, (scratched), hard to find, signed
182. _____ #3450 Amber Nautilus 12 oz. tumblers (6)
183. _____ #1525 Salt dip in original box with Westmoreland Sterling spoon (3 sets)
184. _____ #3400/71 Amethyst 3" 4 ftd. nutcups (4)
185. _____ #3797 Cambridge Square 1 oz. cordials (6)
186. _____ #1327 Chantilly etch 1 oz. cordial
187. _____ #1341 Royal Blue 1 oz. flat cordial
188. _____ #1341 Ebony 1 oz. flat cordial
189. _____ #3775 Roxbury cut 1 oz. cordials (2)
190. _____ #3126 Amethyst 1 oz. cordial, Crystal stem & foot
191. _____ Emerald cordials in low Farber holders (4)
192. _____ #7966 Lexington cut tall 1 oz. cordial
193. _____ #3085 Bluebell 1 oz. cordial, optic, hard to find
194. _____ #3085 Light Emerald 2 1/2 oz. wine, etch Hunt Scene, unusual
195. _____ #925 Peachblo after dinner cup and saucer
196. _____ #925 Light Emerald after dinner cup and saucer, etch #703, signed
197. _____ #1371 Amethyst Bridge Hound
198. _____ #2 Crystal (satin finish) Butterfly, hard to find
199. _____ #3 Crystal Butterfly, hard to find
200. _____ #3 Bird (satin finish), hard to find, mint
201. _____ Frog (satin finish)
202. _____ #2800/234 Primrose Community covered soap dish (minor inside chip) RARE
203. _____ Helio 8" Laurel Wreath plate, heavy gold trim (edge wear)
204. _____ #95 Azurite one pound ftd. candy jar & cover
205. _____ Primrose stemmed atomizer, black enamel & gold trim, original fittings
206. _____ #1043 Crown Tuscan 8 1/2" swan, Style III, mint gold trim, Cambridge label
207. _____ #1040 Crown Tuscan 3" swan, Style III, mint gold trim, Cambridge label
208. _____ #1043 Light Emerald 8 1/2" swan, Style I, signed (extra glass on base)
209. _____ #76 Azurite 10" blown vase, gold encrusted border trim
210. _____ #111 Azurite 6" 3 ftd. sweetmeat, gold encrusted border trim
211. _____ #1136 Heron 9" flower figure
212. _____ #1114 Bashful Charlotte 6" flower figure
213. _____ #1114 Moonlight Blue Bashful Charlotte 6" flower figure (roughness on chin)
214. _____ #3011 Forest Green Nude 7" cupped comport
215. _____ #3011/13 Gold Krystol Nude 1 oz. brandy, optic bowl
216. _____ #3011/9 Peachblo Nude 3 oz. cocktail
217. _____ #3011/9 Mandarin Gold Nude 3 oz. cocktail
218. _____ #3011/9 Emerald Nude 3 oz. cocktail
219. _____ #3011/9 Royal Blue Nude 3 oz. cocktail
220. _____ #3011/9 Carmen Nude 3 oz. cocktail
221. _____ #3011/9 Amber Nude 3 oz. cocktail
222. _____ #3011/9 Amethyst Nude 3 oz. cocktail
223. _____ #3011/9 Ebony Nude stem 3 oz. cocktail, Crystal bowl and foot
224. _____ #85 Primrose 10 1/4" ftd. cylinder vase
225. _____ #1337 Cigarette holder with ashtray foot, cut Manor
226. _____ "Stackaway" Amethyst, Royal Blue, Emerald, Amber ashtrays on Farber holder (set)

227. #107 Mulberry 22 oz. overnight pitcher and cover, beautiful gold trim
228. #229 Topaz 5" candy and cover, 3 ftd.
229. #1402/35 Royal Blue Tally-Ho 12 oz. hld. stein
230. #16 Amber Everglades Swans 12 1/2" bowl (small inside foot flakes)
231. Blue II Honeycomb 3 pc. mayo compote, liner & blue ladle (set)
232. #702 Crown Tuscan miniature cornucopia, Cambridge label
233. #32 Helio 11" bowl, rolled rim, #703 border etch, slight wear to white gold trim
234. #63 Ivory 6" tall comport, 6 1/2" across
235. #74 Ebony 7" candlestick, irridized & gold seaweed decor
236. #1066 oval cigarette holder with ashtray foot
237. #3130 Gold Krystol 6 oz. tall sherbets, etch Appleblossom (4)
238. P499 Emerald Calla Lily candlesticks (pair)
239. #2 Avocado 10 1/2" round center handled tray
240. #3400/28 Forest Green 7" low comport, Crystal keyhole stem & foot
241. #2800/235 Azurite Community puff box, gold band trim (small chip inside cover)
242. #2 Crown Tuscan Seashell 7" plate, Charleton enamel roses & gold, Charleton label
243. #1 Crown Tuscan Seashell 5" plate, Charleton enamel roses, gold worn
244. #3500/42 Crown Tuscan 12" urn & cover, gold encrusted Diane, acid signature
245. #937 Willow Blue Aero Optic 68 oz. pitcher & (4) #9430 matching 12 oz. tumblers (set)
246. W60 Milkglass Martha Washington 32 oz. jug, hard to find
247. #1402/52 Forest Green Tally-Ho ice bucket, Farber holder
248. #68 Primrose 10" candlesticks, iridescent, black & gold decor (pair)
249. #5 Primrose 7 3/4" bowl, matches above, iridescence worn
250. #518 Light Emerald 8 1/2" Draped Lady flower figure (chip under base) and #676 Light Emerald 11 1/2" flip bowl, etch #704 (set)
251. #52 Forest Green Mt. Vernon 40 oz. decanter (large chip-stopper) & (4) matching #22 2 oz. ftd. tumblers (set)
252. #3400/113 Amber 35 oz. decanter & (4) matching #3400/127 2 1/2 oz. hld. tumblers (set)
253. #3500/41 Crown Tuscan 10" urn and cover
254. #1066 Peachblo 5 oz. oyster cocktails, Crystal stem & foot (6)
255. #1402/100 Tally-Ho cocktail, cut #690, blue & lavender flashed, unusual
256. #1337 Royal Blue cigarette holder, Crystal stem & ashtray foot
257. #2354 Peachblo Aero Optic 10" ftd. vase
258. #638 Amber Decagon 6" 3 light candlesticks (pair)
259. #3500/79 Amethyst Gadroon 3" across, ftd. basket
260. #3143/39 Gyro Optic pitcher (scratched) & (5) 13 oz. tumblers (set)
261. #34 Seashell 3" ftd. ashtrays (4) Moonlight (4) Gold (4 chip foot) (8)
262. #3500/57 Crown Tuscan 8" 3 pt. covered candy, gold encrusted Portia
263. #847 Amber Decagon ice tub, etch Cleo, signed
264. #3400/10 Peachblo 11" center hld. tray, etch Diane, unusual
265. #933 Light Emerald cup & saucer, etch #520, signed
266. #693/3000 2 pc. canape set, platinum & red band decor (2 sets)
267. #1407 Carmen 7 oz. old fashioned, shammed
268. #1458 7 1/2" 3 light candelabra base, no bobeches
269. #68 Azurite 10" candlesticks, worn trim (pair)
270. #3500/57 3 part candy lid, unknown cut
271. Jade 8 1/2" Twist candlesticks, fine color (pair)
272. Royal Blue pressed Rosepoint 5 oz. low ftd. tumbler
273. Carmen pressed Rosepoint goblet, Satin base, RARE
274. Forest Green pressed Rosepoint Goblet, Satin base, RARE
275. Amber pressed Rosepoint goblet, Satin base, RARE
276. Crystal pressed Rosepoint goblet, Satin base, RARE
277. #3116 Goblet, engraved Cambridge Glass Co., advertising piece, EXTREMELY RARE
278. #882 Ebony humidor, gold encrusted Hunt Scene, hard to find
279. Owl Lamp, brown enamel over Ivory, original Ebony base & fittings (usual minor chips base of owl) RARE
280. Monkeys lamp, brown enamel over Ivory, original Ebony base & fittings (crack in lamp) RARE
281. #1636 Peg Bluejay (for Cambridge arms)
282. #1563 Cambridge Arms 4 candle arm (1)
283. #628 Cambridge Arms 3 1/2" low candlestick (1)

284. _____ #1536 Cambridge Arms 5" peg nappies (2)
 285. _____ #1633 Cambridge Arms 5" peg vases (2)
 286. _____ #1562 Cambridge Arms vase arm (1)
 287. _____ #2355 8" ruffled epergne vases (6)
 288. _____ #3400/60 Carmen 6 1/2" bread & butter plates, signed (2)
 289. _____ #1715 Emerald reversible ashtray/candlesticks (pair)
 290. _____ P733-4-5 Moonlight, Crystal, Gold 3 size stack ashtrays (set)
 291. _____ #1 Moonlight Blue 2 1/2" Star candlesticks (pair)
 292. _____ W108 Milkglass 8" Seashell oval dish, 4 toed
 293. _____ #385 Cleo etch 8" 3 part relish, metal carrier frame
 294. _____ #758 Willow Blue Decagon 5 1/2" hdd. bonbon, signed
 295. _____ #855 Ebony Decagon 11 1/2" flip bowl, signed
 296. _____ #674 Amber 13" bowl, etch #725 border, slight gold wear
 297. _____ #41 Amber Everglades 6 1/2" comport
 298. _____ #59 Amber Wetherford 4 1/2" mayo bowl (#39 line cut)
 299. _____ #437 Amber 9 1/2" candlesticks (pair)
 300. _____ #1358/8 Caprice epergne w/bobeche, arm & vase (base bruised)
 301. _____ #105 Caprice 6" ftd. mayo and ladle
 302. _____ #70 Caprice 7" candlesticks with prism (chip 1 candlecup) (pair)
 303. _____ #74 Caprice 10" oval 3 light candlestick
 304. _____ #1358/8 Caprice epergne w/bobeche, arm, & vases (chip on arm)
 305. _____ #13 Caprice 3 1/2" coasters (6)
 306. _____ #62 Caprice 12 1/2" 4 ftd. belled bowl
 307. _____ #57 Caprice 10" 4 ftd. salad bowl (very light scratches)
 308. _____ #31 Caprice 2 pc. cake salver (some use marks) hard to find
 309. _____ #111 Caprice 8" 4 pc. salad dressing set
 310. _____ #87 Caprice mustard & cover, hard to find
 311. _____ #300 Caprice 6 oz. tall sherbets, (6)
 312. _____ #300 Caprice 6 oz. low sherbets (7)
 313. _____ #300 Caprice 1 oz. cordials (6)
 314. _____ #82 Caprice 13 1/2" 3 ftd. shallow bowl (large foot chip)
 315. _____ #110 Caprice 6" 2 pat. salad dressing bowl, Sterling fruit decor
 316. _____ #40 Caprice individual sugar & creamer with #36 6" oval tray (set)
 317. _____ #1338 Moonlight Blue Caprice 6" 3 light candlesticks (2 pair)
 318. _____ #82 Moonlight Blue Caprice Alpine 13 1/2" 4 ftd. bowl, shallow, cupped (scratched)
 319. _____ #122 Moonlight Blue Caprice 8" 3 part relish
 320. _____ #128 Moonlight Blue Caprice Alpine mayo set
 321. _____ #207 Moonlight Blue Caprice 3 1/2" x 2 1/2" cigarette box (small edge chip)
 322. _____ #53 Moonlight Blue Caprice 10 1/2" 4 ftd. bowl, crimped
 323. _____ #67 Moonlight Blue Caprice 2 1/2" candlesticks (pair)
 324. _____ #101 Moonlight Blue Caprice 3 oz. cruet
 325. _____ #207 Moonlight Blue Caprice 3 1/2" x 2 1/2" cigarette box
 326. _____ #204 Moonlight Blue Caprice 3" x 3" cigarette holder
 327. _____ #106 Moonlight Blue Caprice 8" mayo liner, scratched
 328. _____ #66 Mandarin Gold Caprice 13" bowl, crimped, 4 ftd.
 329. _____ #1338 Mandarin Gold Caprice 6" 3 light candlestick (1)
 330. _____ #120 LaRosa Pink Caprice 6 3/4" 2 pt. relish
 331. _____ #22 Pistachio Caprice 8 1/2" plates (very light use) (3)
 332. _____ #245 Amber Caprice 5 1/2" vase, plain top

The remaining lots are all etched patterns.

333. _____ #3400/54 Appleblossom cups, signed (2)
 334. _____ #3400/62 Appleblossom 8 1/2" plates, scratches (6)
 335. _____ #3400 Blossomtime 4 toed mayo
 336. _____ #3035 Candlelight 9 oz. goblet, gold encrusted
 337. _____ #3400/47 Chantilly 13" narrow, crimped bowl, 4 ftd., RARE
 338. _____ #3900/117 Chantilly 20 oz. milk pitcher (fracture handle)
 339. _____ #285 Chantilly 5 1/2" 2 pt. salad dressing bowl, Sterling foot
 340. _____ Chantilly tulip wines, Farber Duchess Lace stem holders (1 chip) (5)
 341. _____ #1176 Daffodil 8 1/2" square plates, Cambridge labels (8)
 342. _____ P306 Daffodil 6" candy box and cover

343. _____ P533 Daffodil 3 pc. mayonnaise set
344. _____ #3400/67 Diane 12" 5 part celery & relish
345. _____ #3400/74 Diane 5" 4 ftd. comport, signed
346. _____ #3500/64 Elaine 12" 3 pt. celery & relish, gold encrusted
347. _____ P233 Firenze Pristine 10" 3 part bowl, unusual
348. _____ #869 Lorna Decagon 5 3/4" cheese compote
349. _____ #3400/14 Portia 7" tall comport, gold edge wear
350. _____ #3400/55 Portia 2 hldd. cream soups & liners, signed (6 sets)
351. _____ #393 Rose Point 10" 5 part celery & relish
352. _____ #3121 Rose Point 4 1/2 oz. oyster cocktails, Cambridge labels (8)
353. _____ #3121 Rose Point 10 oz. goblets (8)
354. _____ #3121 Rose Point 2 1/2 oz. wines (4)
355. _____ #3121 Rose Point 6 oz. low sherbets (pin head nick on 1) (8)
356. _____ #3121 Rose Point 4 3/8" blown candy & cover, gold encrusted (2 chips inside rim)
357. _____ #3400/6 Rose Point 11 1/2" 2 pc. cheese & cracker, gold encrusted (gold edge wear)
358. _____ #3400/1186 Rose Point 12 1/2" 2 hldd. cake plate (minor scratches)
359. _____ #3500/28 Rose Point 10" ftd. bowl, 2 hldd.
360. _____ #3500/67 Rose Point 6 piece lazy susan relish set, gold encrusted, slight gold wear
361. _____ #3900/17 Rose Point cups & saucers (8)
362. _____ #3900/20 Rose Point 6 1/2" bread & butter plates (8)
363. _____ #3900/22 Rose Point 8" plates (2 scratches) (8)
364. _____ #3500/55 Rose Point 6" 2 hldd. square basket
365. _____ #3500/54 Rose Point 6 1/2" 2 hldd. low comport
366. _____ #3500/161 Rose Point 8" low ftd. plate
367. _____ #3500/57 Rose Point 8" 3 pt. candy & cover, gold encrusted
368. _____ P506 Rose Point 5" butter tub & cover (repaired)
369. _____ #477 Rose Point 9 1/2" pickle or corn dish
370. _____ #3900/68 Rose Point 5" candlestick (1)
371. _____ #274 Rose Point 10" ftd. bud vase
372. _____ #1402/100 Vichy Tally-Ho 12 1/2" pan bowl, signed
373. _____ #3900/115 Wildflower 76 oz. pitcher (cracked in bottom)
374. _____ #3900/166 Wildflower 14" torte plate, worn gold trim, use marks

CAMBRIDGE PRISM SIGN ORDER FORM

MINT JULEP by Boyd's Art Glass

Limit two per member, subject to availability.

Name: _____

Address: _____

ordered @ \$25/each: _____

Postage @ \$4/order: _____

Ohio sales tax @ \$1.04/each: _____
 (Ohio residents only)

Total cost of order: _____

Please make checks payable to NCC, Inc.
 NCC, P.O. Box 416, Cambridge, OH 43725

Hidden Treasures

by Rich Bennett

It's been since December 1993 that I've written an article about something I truly enjoy doing: digging in the Cambridge Glass Dump.

No one can imagine what I feel when walking the area where this most famous glass factory once stood. One must realize that digging is not a "walk in the park." It has taken many hours to accumulate the amount of glass that I have found. In the beginning, I was very anxious and picked up almost anything that resembled a piece of ware. Now, I've become very selective. I look for unusual colors and shapes and possibly experimental pieces (which I HAVE found).

The glass in the dump is laid out the way it was made. Most of the earlier pieces, such as Nearcut, are at the south end of the grounds, which is the farthest away from the factory. As the years went by, the glassware would inch its way closer to the factory. There have been some exceptions. Near the front fence line (north), I've found a few pieces of Helio Community pattern, which was made in the early '20s. Another exception is Mardi Gras. Here is a color that was the very last to be made; yet, the only place I've found it is on the south end. But there was very little digging, because most of it was laying on top of the ground. The shapes of these are all very familiar, except for part of a decanter.

One particular day I remember digging in an area where I had found many pieces of carmen swans. The sizes were 3 1/2" and 6 1/2". This was, and is, a very popular spot for me to dig, considering carmen is one of my favorite colors. While I was digging here, many different thoughts went through my head, such as: Wouldn't it be nice to find a 16 1/2" carmen swan punch bowl or even a cover for an 8 1/2" carmen swan (which I know exist in crystal, moonlight blue and light emerald).

After digging this area, I was walking along, looking at the ground, hoping for something to catch my eye. To my amazement, I found something I had been looking for for almost five years. It was a prism sign in amber, only partially buried. As I started to dig it out, I noticed it was only two-thirds intact. But it did have gold letters! This, for me, was a great find, because I had a feeling there would be more to come. Unfortunately, it was late in the afternoon and I had to leave. I marked the area where I had found the prism sign and went home to tell my wife and kids about my fantastic finds.

More to come ... "A dream come true."

Bogart's Bed & Breakfast

62 W. Main Street, New Concord
 New Concord lodging in 1830 Federal
 Style home, decorated with
 antiques throughout.



Bogart's Antiques

7527 E. Pike, Norwich OH
Quality Antiques Bought & Sold

OWNERS: Jack & Sharon Bogart
872-3514 or 826-7439

1996 Calendar Planning

The following are tentative dates for major club activities during 1996:

March 1	Quarterly meeting/auction preview
March 2	All Cambridge Glass Auction
May	Board of Directors elections
June 20-23	1996 Convention
August 3	Quarterly meeting/picnic
November 2	Quarterly meeting/program

MUSEUM SPECIAL SALE MART

The Museum Interior Committee, at the direction of the Board of Directors, offers these great values to you, our faithful members. The following items are on special sale. The sale price listed is 50% off the regular price. Due to limited numbers of some of these items, we cannot guarantee that you will get all the items that you have ordered. If you order an item and it is sold out, we will refund your money.

Shipping charges are \$3.00 on the first item and 50 cents for each additional item. This applies only to glass items. Shipping is included in the booklets, leaflets and pamphlets. Ohio residents must include 6 1/2% sales tax.

ALL PRICES ARE EACH UNLESS OTHERWISE NOTED.

CONVENTION FAVORS

Year	Description	Regular Price	Sale Price
1982	Paperweight, Gold Krystol, Factory	\$4.00	\$2.00
1983	3 oz. Georgian, Cobalt Blue NCC 10th Anniv.	\$4.00	\$2.00
1984	3 oz. Georgian, Pink	\$4.00	\$2.00
1985	3 oz. Georgian, Amber	\$4.00	\$2.00
1986	3 oz. Georgian, Gold Krystol	\$4.00	\$2.00
1987	Marjorie Punch Cup, Moonlight Blue	\$4.00	\$2.00
1988	Square Cigarette Holder, Cobalt Blue	\$4.00	\$2.00
1989	Mt. Vernon Cordial, Teal	\$4.00	\$2.00
1990	Mt. Vernon Cordial, Pink	\$4.00	\$2.00
1991	Mt. Vernon Cordial, Cobalt Blue	\$4.00	\$2.00

CUP PLATES

These were made by Pairpoint Glass for NCC. The cup plates feature a bulldog, similar to the Bridge Hound, in the center, and "National Cambridge Collectors" on the outer edge.

	Regular	Sale
Crystal Cup Plate	\$4.00	\$2.00
Teal Cup Plate	\$4.00	\$2.00
Amethyst Cup Plate	\$4.00	\$2.00

BOOKLETS, PAMPHLETS AND LEAFLET REPRINTS

These are reprints of the original Cambridge advertising.

	Regular	Sale
Cambridge Arms Booklet	\$1.00	\$.50
Rose Point Pamphlet	\$.50	\$.25
Regency Stem Pamphlet	\$.50	\$.25
Blossom Time Pamphlet	\$.50	\$.25
Star Cut Leaflet	\$.20	\$.10
Rondo Cut Leaflet	\$.20	\$.10
Roxbury Cut Leaflet	\$.20	\$.10
Laurel Wreath Cut Leaflet	\$.20	\$.10

SEND ORDERS TO:

National Cambridge Collectors Inc.
Attn: Museum Mart
PO Box 416
Cambridge, Ohio 43725-0416

Please include a street address for all glass item orders as these are shipped UPS and cannot be delivered to a post office box.

MUSEUM MART

THESE ITEMS ARE NOT ON SPECIAL SALE. Many of these items are of a limited number also, and may be sold out by the time we receive your order. The same rule applies on refunding your money if we are out of an item. The same shipping applies of \$3.00 for the first item and 50 cents for each additional item on glass items. Ohio residents must include 6 1/2% sales tax on the price of the items. ALL PRICES ARE EACH UNLESS OTHERWISE NOTED.

CONVENTION FAVORS

1994 Cascade Goblet in Iridized Crystal	\$5.00
1995 Cascade Goblet in Cranberry Ice	\$5.00

MUSEUM REISSUE

Eagle Bookend in Cobalt Blue, dated 1986 with "N.C.C." and the Mosser Glass Company Logo on the base. \$30.00 each

CONVENTION SOUVENIR BOOKLETS

These were produced for the last two conventions. They contain information on Cambridge, OH; the glass industry today in Cambridge; articles on the topic of the convention; and other information. Price includes shipping.

1994 Convention Souvenir Booklet (1920s Theme)	\$5.00
1995 Convention Souvenir Booklet (1930s Theme)	\$5.00

OTHER GIFT GIVING IDEAS

Membership in the National Cambridge Collectors is a wonderful gift. You can give it as a new membership or renew the membership of a current member. The cost is only \$17.00.

The Back Issues of the Crystal Ball are a great gift also. The price is only \$79.00 for current members and only \$49.00 for new members. (New members are those who have joined since November 1, 1994.) Please indicate what issue we should stop with on these orders, as we know you do not want duplicates of issues. Please include \$15.00 shipping for these orders.

NATIONAL STUDY GROUP REPORTS

Study Group #14 Miami Valley of Ohio

The meeting was called to order at 6:58 p.m. by President Georgia Otten at the Huber Heights Library, on October 10, 1995.

There were eleven members present: Vicki and Frank Wollenhaupt, Ron and Norma Hufford, Mac and Georgia Otten, Fred Schaefer, Ken and Judy Rhoads, Sue and Dave Rankin.

During our business meeting, an updated membership list was distributed, and we discussed the Christmas party plans, the Etchings Book and work session planned for the November meeting, and changing our Study Group's year to September to September, which is more in line with the way we actually plan and function.

Program: Fred Schaefer led an informative discussion of bathroom and bedroom glass and perfumes.

Show and Tell: Colonial #2630 Toy Tea Set; #1043 8 1/2" Light Emerald Green Swan; Azurite flared 11 1/4" bowl with green enamel decoration around edge, signed, and with a flower etched into the bottom of the bowl; Helio tall compote with gold decor; #7600 1 1/2 oz. tumbler, etched Marjorie; #973 Peachblo 8 oz. tumbler, etch #732; #532 Ebony 6" comport with gold decor; #1115 11" Bashful Charlotte; Willow Blue Aero Optic Cheese and Cracker; #108 Windsor Blue 8" oval dish; #1242 Royal Blue 10" vase, #3400/193 6 oz. oil, Satin with Gold Wildflower; #3400/67 12" Ebony 5-compartment Celery and Relish with Silver Gloria; #3500 Finger Bowl, etched Portia, with Wallace Sterling Rosepoint edge; #1312 3" x 3 1/2" x 2" Royal Blue Cigarette Box; Caprice #204 Moonlight Blue Triangle Cigarette Holder; #116 Azurite Ash Tray; #2651 Feather Marigold Carnival Sundae; glass clock - Nearcut; #2693 Crystal Basket; #2660 Wheat Sheaf Pitcher (similar to #423 vase); #2651 Feather Tankard; #876 pair of Willow Blue candlesticks, etched #727.

Submitted by
Judy Rhoads, Secretary

Study Group #14 Miami Valley of Ohio

The meeting of November 15, 1995 was called to order at 7:03 p.m. by President Georgia Otten at the home of Sue and Dave Rankin.

There were thirteen members present: Sue and Dave Rankin, Ken and Judy Rhoads, Frank and Vicki Wollenhaupt, Ron and Norma Hufford, Fred Schaefer, George and Beverly Stamper, Mac and Georgia Otten.

Discussed at our business meeting were our Christmas Party at Phyllis Smith's, future programs, and the Quarterly Meeting on November 4. Sue and Dave Rankin, Ken and Judy Rhoads, Mac and Georgia Otten sat in on the Board of Directors meeting, and attended the Quarterly Meeting as did Al Tuttle.

Show and Tell: #1327 Frosted 1 oz. cordial with silver decoration; #3400/156 Frosted 12 oz. decanter with silver decoration; #7 Coral Sea Shell 14" sandwich plate with gold decoration; #8 Coral Sea Shell 11" salad bowl with gold decoration; #3500/74 Ebony Gadroon 4" candlesticks made by Fenton; #3400 Crystal shaker with chrome lid; #1066 Gold Krystal ash tray with Crystal stem; Royal Blue 2 oz. tumbler with applied Crystal Handle; Arms vase etched Chantilly; Azurite Community berry; sugar and creamer; paste mold blown round Helio vase; Azurite small basket; Carmen Nautilus 28 oz. decanter with Crystal handle and stopper, Moderne re-opened Moonlight Blue salad bowl and underplate; Mt. Vernon rectangular ashtray with cigarette holder insert.

Program: The remainder of the evening was spent in reviewing, discussing, problem solving, and hands-on work with the indexing and computer painting of the etchings for the etchings book.

Submitted by
Judy Rhoads, Secretary

(Continued on Page 21)

CAMBRIDGE GLASS BOOKS FOR SALE

By National Cambridge Collectors, Inc.

Colors in Cambridge Glass

128 pages, 60 color plates, fully indexed, Hardbound with price guide \$19.95

1930-1934 Cambridge Glass Company Catalog Reprint

250 page reprint of original catalog, Paperback with price guide \$14.95

1949-1953 Cambridge Glass Company Catalog Reprint

300 page reprint of original catalog, Paperback with price guide \$14.95

1956-1958 Cambridge Glass Company Catalog Reprint

164 page reprint of original catalog, Paperback \$12.95

Cambridge Caprice

200 page book illustrating the most popular line of Cambridge Glass. Lists color, decorations, reproductions and rare pieces. Paperback with value guide \$19.95

For NCC Members, these publications at a 10 percent discount.

By Bill & Phyllis Smith

Cambridge Glass 1927-1929

66 page reprint of original catalog, Paperback with identification guide \$7.95

By Cambridge Buffs Study Group

Nearcut (New printing in progress)

108 page reprint of 1910 Cambridge Catalog, Paperback with price guide \$9.95

Price Guide, Price alone, includes postage \$3.00

By Mark A. Nye

Cambridge Rose Point

94 Pages, fully indexed, Paperback with Value Guide \$12.95

Value Guide

Updated value guide for Rose Point Book, Included with above. Price alone, includes postage \$5.00

Cambridge Stemware NEW, 2nd edition. Same format as original. \$19.95

By Mary, Lyle and Lynn Welker

Cambridge Glass Company

120 pages of reprints from eight old catalogs, Paperback \$10.00

Cambridge, Ohio Glass in Color II, Spiralbound \$5.95

By Harold and Judy Bennett

1903 Cambridge Glass Company Catalog Reprint

106 page reprint of an original catalog, Paperback \$7.50

By Degenhart Paperweight and Glass Museum

Reflections, 45 page book giving a history of all 18 glass companies in Guernsey County. Paperback, with pictures. \$5.00 including postage

Address orders to: Books, National Cambridge Collectors, Inc., PO Box 416, Cambridge OH 43725-0416

Please add postage and handling to your order (first book, \$2.00; each additional book, 50 cents), Ohio residents add 6 1/2% state sales tax.

Please send only check or money order, NO CASH, NO CHARGE CARDS. Dealer Discounts Available - Please Write!

The
DAZE Inc.

SPECIAL OFFER
to NCC Friends
\$2.00 OFF
the 1 year subscription price
when on this form or copy of it

The Original National monthly newspaper dedicated to the buying, selling and collecting of colored glassware and china including Depression Glass and the Elegant Glass (Cambridge, Heisey, Fostoria, etc.) We educate and inform you each month with feature articles by top notch columnists, readers "finds", club happenings, show news and a multitude of ads. Find those missing pieces to your American-made glass, china and pottery collection. Can't identify it? Perhaps we can help "keep up with what's happening" with a subscription to the DAZE. Buy, sell or trade from the convenience of your easy chair.

Name _____
Street _____
City _____
State _____ Zip _____

1 year \$21.00 2 years \$40.00 \$2.00 Single Copy

Subscription Hot Line: 1-800-336-9927

Exp. Date _____ Card No. _____

Signature _____

Orders to:

The Daze, Inc., Box 57, Otisville, MI 48463

Please allow 30 days for your first issue - Canadian Subscribers, add \$1.00 per year and subscribe by charge card only! This Special Offer may not be combined with any other special offer.

Offer Expires December 31, 1995

WE CLEAN CLOUDY GLASS!

** SATISFACTION GUARANTEED **

YES, IT IS TRUE THAT WE REALLY CAN RESTORE THE INTERIOR OF YOUR CRUET, VASE, DECANTER AND MOST OTHER INTERNALLY ETCHED ITEMS BACK TO NEAR ORIGINAL CONDITION!

WE DO NOT OIL, WAX OR COVER UP THE SICKNESS IN ANY WAY! WE ACTUALLY REMOVE IT.

NO ITEMS ARE TOO SICK TO CLEAN! IF WE CANNOT CLEAN YOUR ITEM TO MEET YOUR SATISFACTION, THE CLEANING IS FREE!

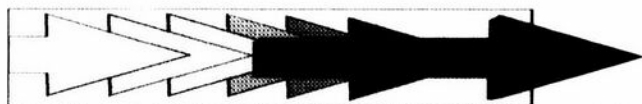
WE ARE SO CONFIDENT IN OUR SERVICE THAT WE ASK THAT YOU SEND NO MONEY. WHEN WE RETURN YOUR ITEM A BILL WILL BE ENCLOSED FOR THE POSTAGE & CLEANING. IF YOU ARE HAPPY, PLEASE SEND PAYMENT; IF NOT, RETURN THE BILL MARKED "NOT SATISFIED".

PLEASE ALLOW 6-8 WEEKS FOR REDELIVERY OF MOST ITEMS. ALL GLASS IS HANDLED AND CLEANED AT YOUR RISK. SOME VERY CLOUDY ITEMS MAY TAKE SEVERAL ADDITIONAL WEEKS.

CRUET	\$20.00	COCKTAIL SHAKER	\$30.00
COLOGNE	\$20.00	SALT SHAKER (SINGLE)	\$15.00
WATER BOTTLE	\$30.00	SALT SHAKER (PAIR)	\$25.00
DECANTER	\$30.00	CRUSHED FRUIT JAR	\$30.00
VASES (UNDER 12 IN.)	\$25.00	LAVENDER JAR	\$20-30.00

ALL OTHERS WRITE FOR QUOTE

SHIP TO: CARLISLE & ASSOCIATES
28220 LAMONG ROAD, DEPT. C
SHERIDAN IN 46069
(317) 758-5767 AFTER 6:00 P.M.



NATIONAL STUDY GROUP REPORTS

(Continued from Page 19)

Study Group #16 The Elegant Glass Collectors

We met on November 19, 1995 at the 40th Annual Fall Eastern National Antiques Show and Sale in Harrisburg, PA. Those in attendance were Bill and Pam Earussi, Eloise Lytle, John Corl, Frances Whitemore, Gene Bender. Bud and Anna Walker had been to the show on the 18th since they could not attend on the 19th.

We toured the show. We saw Jim and Leora Leasure. They had the largest selection of Cambridge Glass, and are familiar to NCC members from Cambridge Shows and the Westchester Show. There were many pieces of Crown Tuscan, quite a few Epergnes shown very nicely and various Rose Point pieces. A crystal Flying Lady bowl was seen, as were a Peachblo footed vase with flower and bird etching, a #3400 footed Martha bowl, and a few Azurite pieces. Some Apple Blossom and Gloria were also seen. A new dealer who specialized in "Sporting Antiques" displayed a Fish Tankard Pitcher. An unusually large Marjorie Nearcut footed comport was there. In Azurite, two sets of candlesticks could be had, one which could also be used as a vase, and the other pair was shown with a footed comport. In Carnival, a Strawberry covered powder jar was seen, and a Feather covered cracker jar was seen.

Following the show, we went to John's apartment and saw his collection of Cambridge Cobalt, including Nautilus, Tally Ho, Mt. Vernon and Caprice. After an excellent repast with homemade breads and cake, we departed.

Our next scheduled meeting will be at the Wheaton Village, Route 55, Exit 26 - Millville, NJ on Sunday February 4, 1996. I hope this year the weather is more cooperative. We will meet inside the museum at 10:00 a.m., and probably eat at a local restaurant after the show. This is an antique and collectibles show right in the museum, and well worth seeing.

Merry Christmas to all!

Submitted by
Pam Earussi

~ GLASS ~ MARKETPLACE

FOR SALE: Cleo, Willow Blue, 8-cup/saucer - \$55.00; 8-Luncheon Plate - \$65.00; 12-9oz. #3077 Goblet - \$75.00; 1-Center Handle Plate - \$150.00. \$1,800.00 for all. **Phil Cole, (219) 627-2349 after 6:00 PM.**

WANTED: Cambridge Arms, Epergnes plus Accessory Pieces. Vases #2355 any size and bobeches #327. Looking for a 10" or 12" Everglades Bowl and Candlesticks to buy. **Jody Stacken, 3022 Quail Creek Dr., Topeka, KS 66614. (913) 272-7118.**

WANTED: #1573 Arm for Candelabrum, Crystal; #628 3 1/2" candlestick, Crystal; #1211 Everglades candelabra in Dianthus Pink. **Anne S. Kinsell, 2000 Indian Trail Dr., West Lafayette, IN 47906. (317) 463-9724.**

WANTED: #1327 Favor Vase in Carmen, Gold Krystal, Crystal (no etch). REALLY NEED #1711 2 1/4" x 3 1/2" rectangular Ebony ashtray. **Call Dawn Castle after 6:00 PM Eastern, Monday through Friday at (810) 294-7190.**

WANTED: Hard to find Rose Point, Rose Point #3106 stems, Nude stems, and novelty items. Write price and description. **Nancy and Jim Finley, 711 West Broadway, Sedalia, MO 65301. Phone (816) 826-5023 or 827-0101.**



RECENT FINDS

- #2651 Feather Carnival cracker jar and lid, Emerald
- #274 10" Ebony vase, border etch, gold trim
- 6 1/2" Amber Bashful Charlotte
- 8" Azurite stick vase
- 10" Ivory stick vase, with enamel decoration

(8) #3500 Amber/Crystal Tall Goblet & (6) Tall Sherbet & (2) 6 #7801 Crystal hollow champagnes	\$125.00
#3500 Tall sherbets professionally repaired	\$450.00 all
(6) Amber #1066 clarets	\$195.00
1-pair Everglade Single Leaf Candlesticks, Amber, original labels	\$175.00
Crystal 80 oz. Ball jug, Optic & 5 large tumblers	\$185.00
Pink etch #520 26 pieces	\$525.00
8 Pink etch #520 low sherbets	\$325.00
Green etch #520 15 pieces	\$335.00
Green etch #520 (2) 8" plates & (2) cups & saucers	\$110.00

ROSE POINT

4 #3500 Footed tumblers	\$150.00
3 #3500 tall sherbets	\$110.00

CAPRICE

4 Blue footed 9 oz. tumblers	\$200.00
2 Blue footed 9 oz. tumblers professional repaired	\$85.00
1 pair Crystal #91 salt and pepper	\$85.00
1 large cigarette box lid, Crystal	\$25.00

CAPRICE (continued)

1 large cigarette box lid, M. Gold	\$30.00
2 extra #91, large hole	\$45.00 each
6 Sicily cocktails, labels & original company wrap	\$150.00

YELLOW APPLEBLOSSOM

1 2 hdd. 12" plate	\$65.00
6 low sherbets	\$150.00
12" bowl	\$90.00
1 pair single keyhole candlesticks	\$95.00

WEDDING BAND

8 #3109 tall goblets	\$150.00
7 #3109 tall sherbets	\$100.00
5 #3109 wines	\$100.00
3 #3750 wines	\$45.00
4 #3109 cordials	\$85.00
4 flat water tumblers	\$100.00
2 shots	\$35.00

B.J. Hanson
4730 Rim Rock
Oceanside, CA 92056
619-945-4290 UPS and Insurance Extra

THINGS WORTH REMEMBERING. . .

The Value of Time
 The Success of Perseverance
 The Pleasure of Working
 The Dignity of Simplicity
 The Worth of Character
 The Improvement of Talent
 The Influence of Example
 The Obligation of Duty
 The Wisdom of Economy
 The Virtue of Patience
 The Joy of Originality
 The Power of Kindness

WHEN ONE DOOR OF HAPPINESS CLOSES,
 ANOTHER OPENS; BUT OFTEN WE LOOK SO
 LONG AT THE CLOSED DOOR, WE DO NOT SEE
 THE ONE WHICH HAS BEEN OPENED FOR US.

.....HELEN KELLER

**Our Stems****Don't Have Thorns**

As the world's largest supplier
 of discontinued china, crystal
 and flatware, Replacements, Ltd.
 has 54,000 different patterns
 and 2.1 million pieces.

We have Rosepoint, Rambling Rose,
 Midnight Rose, Rosebud,
 Rosechintz, . . .

And these stems don't have thorns.

REPLACEMENTS, LTD.

1089 Knox Road • PO Box 26029
 Greensboro, NC 27420 • Dept CB

Everyday 8am-10pm

Call 1-800-562-4462



NOTE: When writing to the dealers listed here, please enclose a SASE!

<p>DAUGHERTY'S ANTIQUES Jerry and Shirley</p> <p>Antiques and Collectibles * Mostly Glass</p> <p>Shows & Mail Orders 2515 Cheshire No 402-423-7426 Evenings Lincoln NE 68512</p>	<p>"HAPPINESS IS" Buddy and Kathy Stultz</p> <p>3106 Warren Court, Glen Allen, VA 23060 804-672-8102</p> <p>Specializing in American Made Glass We Buy & Sell, Shows & Mail Order</p>	<p>THE MUTED SWAN ANTIQUES</p> <p>5486 Peachtree Rd. Chamblee, GA 30341 Heart of Chamblee Antique Row Specializing in Cambridge, Heisey and Fostoria</p> <p>Bill & Pat Miller 404-451-7620</p>
<p>Milbra's Crystal Buy & Sell Replacement and Matching Specializing in Cambridge Fostoria Heisey and others</p> <p>Milbra Long (817) 645-6066 Emily Seate (817) 294-9837 PO Box 363, Rio Vista, TX 76093</p>	<p>BUY-SELL (513) 390-3617</p> <p>Taste of Honey Glassware - Collectibles</p> <p>Clarke West 4888 Brannan Dr. E. Carole West Springfield, OH 45502</p>	<p>ARMORY ANTIQUES 168 West Main Street Plain City, OH 43064</p> <p>QUALITY THINGS Cambridge, Heisey, China, Silver, Furniture Mon-Sat 10-5 VISA/MC 614-873-4890</p>
<p>THE GLASS URN 456 West Main Street, Suite G Mesa, AZ 85201 602-833-2702</p> <p>Mail Order Shows Open Shop</p> <p>CAMBRIDGE, FOSTORIA, HEISEY, ETC</p>	<p>ANTIQUES ON THE MALL SPECIALIZING IN CAMBRIDGE GLASS</p> <p>Bogart's - Bldg. #3 - Norwich, OH</p> <p>Virginia Bennett 614-432-4483 64183 Warne Drive, Cambridge, OH 43725</p>	<p>GATEWAY ANTIQUE MALL, INC. JUST NW OF MINNEAPOLIS-ST. PAUL, MN Next to Super 8 in Rogers, MN (I-94/101 Intersection)</p> <p>85 Dealers 7 Days, 10-6 612-428-8286 ELAINE STORCK, DIRECTOR</p>
<p>ETTELMAN'S DISCONTINUED CHINA & CRYSTAL Cambridge a Specialty</p> <p>PO Box 6491-CB Corpus Christi TX 78466 Phone 512-888-8391 Include S A S E</p>	<p>D & D ANTIQUES Columbus, Ohio</p> <p>Dick Sifko SHOWS ONLY</p>	<p>RONI SIONAKIDES 6565 W. Herbison Rd. DeWitt, MI 48820 517-669-5981 Fostoria, Tiffin, Duncan, Cambridge</p>
<p>THE GLASS CUPBOARD P O Box 652 West End, North Carolina 27376</p> <p>Marcia Ellis Cambridge, Duncan, Heisey 910-673-2884 Shows, Mail Order</p>	<p>JUDY'S ANTIQUES Judy Bennett 422 S Ninth Street (Corner of Jefferson) Cambridge, Ohio 43725 BUYING Ph 614-432-5855 SELLING</p> <p>CAMBRIDGE GLASS MY SPECIALTY</p>	<p>YOU CAN ADVERTISE YOUR ANTIQUe SHOP HERE!</p>
<p>FINDER'S ANTIQUE HOUSE New Home of Elegant Glassware 1169 Piney Forest Rd. Danville, VA 24540 (804) 836-6782 Cambridge-Heisey-Duncan-Fostoria</p>	<p>GREEN ACRES FARM 2678 Hazelton Etna Rd., Pataskala, OH 43062 (State Route 310 North)</p> <p>Sat & Sun 1-7 PM 614-927-1882 Antiques, Crystal Glass and Collectibles</p>	<p>CRYSTAL LADY 1817 Vinton St., Omaha, NE 68108 Joann D. Hagerty Bus 402-341-0643 Res 402-391-6730 Specializing in Elegant Glass & Collectibles</p>
<p>ASK Specializing in Cambridge. Wide variety</p> <p>Booth #14 in the Antique Mall of Boswell 90 miles south Chicago, right on U.S. 41. 7 days a week 10-5, except Sun. 12-5 (317) 869-5525</p>	<p>FLORENCE SOLITO 54 Old Stafford Rd., Tolland CT 06084</p> <p>Stock All Elegant Glassware Mail Order Since 1978 Send Wants</p> <p>203-872-3294 Satisfaction Guaranteed</p>	<p>YOU CAN ADVERTISE YOUR ANTIQUe SHOP HERE!</p>
<p>MICHAEL KRUMME Cambridge*Heisey*Fostoria*Duncan*Miller*Paden City New Martinsville*Fenton*Tiffin*Imperial*Morgantown</p> <p>I search - Send detailed want list - all kept on file PO Box 5542 Santa Monica, CA 90409</p>	<p>YOU CAN ADVERTISE YOUR ANTIQUe SHOP HERE!</p>	<p>MARGARET LANE ANTIQUES 2 E. Main St., New Concord, OH 43762 Lynn Welker 614-826-7414</p> <p>Cambridge Glass Matching Service Hours Mon-Fri 10-12 AM, 1-5 PM or by Appointment</p>
<p>GLASS RESTORATION</p> <p>BRILLIANT DON & LYNNE CRYSTAL WORMLAND ELEGANT MT. CLEMENS, MICH DEPRESSION 810-468-3519</p>	<p>ALADDIN LAMP BOOKS Free List Figurine Lamps Wanted Bill & Treva Courter 3935 Kelley Rd. Kevill, KY 42053 Phone/FAX 502-488-2116</p>	<p>YOU CAN ADVERTISE YOUR ANTIQUe SHOP HERE!</p>

ISAACS ANTIQUES



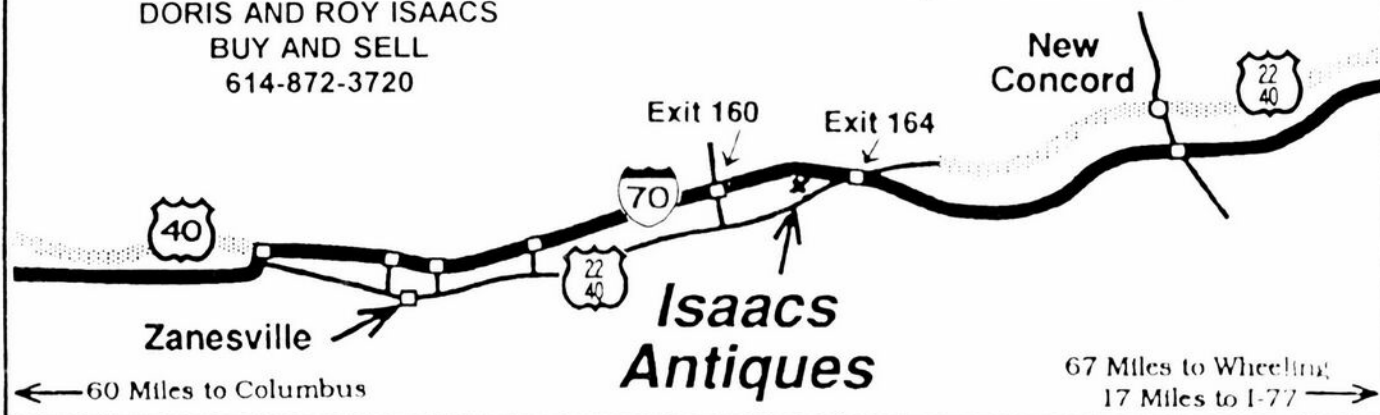
WE FEATURE GLASSWARE OF: CAMBRIDGE,
HEISEY, FENTON & FOSTORIA
Plus Art Pottery & a General Line of Antiques

DORIS AND ROY ISAACS
BUY AND SELL
614-872-3720

7525 East Pike
Norwich, Ohio 43767
614-872-3720

In East Pike Antique Complex - Rt. 40,
One Mile West of I-70 Norwich Exit #164

Hours 10 - 5:30 Mon. - Sat.
12 - 5:30 Sun.
Open Year Round



National Cambridge Collectors, Inc.
PO Box 416
Cambridge, OH 43725-0416

FIRST CLASS MAIL
U.S. POSTAGE
PAID
PERMIT NO. 1
CAMBRIDGE, OH

FIRST CLASS MAIL

Membership Renewal Notice

**If the date on your address label is 1-96,
this is your LAST ISSUE of the Crystal Ball.**
Please take a moment and renew now. Thank you!