



Cambridge Crystal Ball

Published monthly by National Cambridge Collectors, Inc.
to encourage and report the discovery of the elegant and boundless product of the
Cambridge Glass Company of Cambridge, Ohio

Issue No. 276

April 1996

1996 AUCTION: FUND-RAISING SUCCESS

by Cindy Arent

When it comes to auctions, no one does it better than auction chairman Lynn Welker and auctioneer Craig Connelly! This was an auction to banish the winter "blahs" for those of us in the snow belt. The 1996 auction scored another huge success as a fund-raising event for the National Cambridge Collectors.

The weekend began Friday evening with the NCC quarterly meeting. Following the meeting, auction chairman Lynn Welker conducted a Show and Tell session and answered questions about the glassware that members had displayed for show and identification. Some of the items were: a Crown Tuscan 8 1/2" draped lady, a tombstone bookend with the Knight etching, a shot glass etched Vichy, an Azurite Community cream and sugar, a Crown Tuscan ruffled urn vase, a Bluebell 13" draped lady, a late Mulberry ivy ball, a Rubina blown aero optic goblet, an Azurite perfume lamp, an Ebony relish with white gold Gloria, an Ebony Style 2 swan with Rockwell silver overlay, a blown finger bowl etched Portia with silver edge, and two Ebon Pristine vases decorated with gold swallows.

During the auction preview, Lynn highlighted various pieces of auction glass and answered questions from the audience. Members were then able to view

their anticipated acquisitions one more time. As usual, the 1996 auction contained an excellent representation of the many lines and colors produced by the Cambridge Glass Company.

On Saturday morning, bidders began arriving from as far away as California and Florida. We really appreciate the effort of members that travel many miles to attend!

Prior to the beginning of the auction, the Cordials Study Group held a fund-raising raffle of a Moonlight

(Continued on page 4)

Inside This Issue:

The First Sign of Spring

Flea Market Update

Sea Shell Line

Convention 1996 Update
and Schedule

1996 Benefit Auction
Results

Cambridge Crystal Ball

Official publication of National Cambridge Collectors Inc., a non-profit corporation with tax exempt status. Published once a month for the benefit of its members. All rights reserved; reproduction in whole or in part without written permission of NCC and the author is prohibited.

Membership is available for individual members at \$17.00 per year and an additional \$3.00 for associate members (12 years of age and older, residing in the same household). Of the master member dues, \$12.00 is credited to a one-year subscription to the *Crystal Ball*. All members have voting rights, but only one *Crystal Ball* per household. **Effective 1/1/96, multi-year memberships are available: 2 years for \$33.00, 3 years for \$49.00.** Back issues of the *Crystal Ball* are available for \$1.00 each or 12 issues for \$10.00. Complete sets for \$79.00.

1995-1996

OFFICERS AND COMMITTEE CHAIRPERSONS

President	Richard D. Jones
Vice President	Mark A. Nye
Secretary	Bud Walker
Treasurer	Charles Upton
Sergeant-at-Arms	Tarzan Deel
Acquisitions	Joe Andrecjak
Budget & Finance	Mark A. Nye
By-Laws	Charles Upton
Long-Range Planning	Tarzan Deel
Membership	Jeff Ross
Museum Expansion/Relocation	Willard Kolb, J.D. Hanes
Museum Facilities	Carl Beynon, Joe Miller
Museum Interior	J.D. Hanes
Non-Glass Items	Tarzan Deel
Nominating	Joy McFadden
Program	Open
Projects	Tarzan Deel
Publications	Mark A. Nye
Publicity	Cynthia A. Arent
Study Group Advisor	Marybelle Moorehead
1996 Convention	Mark A. Nye, Bud Walker
1996 Auction	Lynn M. Welker
1996 Antique Show	Mary Beth Hackett, Joy McFadden
1996 Flea Market	Mike Arent
<i>Crystal Ball</i> Editor	Lorraine Weinman

National Cambridge Collectors Inc. owns and operates the **Museum of Cambridge Glass** at 9931 E. Pike Road, Cambridge, Ohio. Open April through October 9AM-4PM Wednesday through Saturday and Noon-4PM on Sunday. March open Friday-Sunday. Closed November-February, Easter, July 4th.

ADVERTISING RATES

Display Rates (camera ready ads preferred)

<u>Unit</u>	<u>Members</u>	<u>Non-Members</u>
Full Page	\$45.00	\$60.00
3/4 Page	\$35.00	\$50.00
1/2 Page	\$25.00	\$35.00
1/4 Page	\$15.00	\$25.00
1/8 Page	\$10.00	\$15.00

Classified Rates

10 cents a word \$2.00 minimum

Abbreviations and initials count as words. Type sizes cannot be mixed in classified ads. **Payment in full must accompany all ad copy.** Contact Editor for copy assistance.

Dealer Directory

Six Line Maximum \$24.00 for 12 month contract

Cambridge Crystal Ball assumes no responsibility for items advertised and will not be responsible for errors in price, description, or other information.

Advertising copy, letters, articles, must be received by the 5th of preceding month to be considered for publication in the next issue.

Please address all correspondence (include SASE) to:

**National Cambridge Collectors, Inc.
P.O. Box 416
Cambridge, OH 43725-0416**

President Rick Jones	914-631-1656
Vice President Mark Nye	517-592-6200
Secretary Bud Walker	609-965-2413
NCC Museum: Phone and Fax	614-432-4245

Please notify us immediately of any address change.

Opinions or information stated in any signed article or letter printed in the *Crystal Ball* are those of the author and may not agree with National Cambridge Collectors, Inc. The Editor reserves the right to refuse and to edit any material submitted for publication to conform to the editorial style of the *Crystal Ball*. Members are encouraged to write to NCC and the *Crystal Ball* sharing their knowledge and questions!

President's Message

The First Sign of Spring

For many people, it's the proverbial robin singing; for some, it is Spring Training and Opening Day; for others, it's the golf course opening. For me, strange puppy that I am, it's the Annual All Cambridge Glass Auction. I know that once the auction is over, spring is just around the corner.

I look forward to the auction with great anticipation and with some trepidation. The discomfort is thinking about what type of weather I'll have to endure in my drive from New York City to Cambridge. (Two years ago, I encountered a raging blizzard.) The joy comes from thinking about the glass available for auction (that's the "collector" in me) and about what an important fund-raiser it is for the Cambridge Museum (that's the board director in me).

As I write to you here in the middle of March, I am delighted to say that spring is off to a wonderful start in all regards. The flurries were relatively minor on the drive out (although the road conditions could have been a little better), the glass display put on by Lynn Welker and his team was glorious, and the proceeds from the sale will be of great benefit to all members...we raised well over \$4,000 to help meet our operating expenses.

To all successful bidders I say congratulations; to all consignors I say thank you; and to those who were not successful in their bidding I say thanks for trying and please keep up your support to N.C.C. and your love for Cambridge glass.

As I wrote in a previous column, winter always seems to slow things down. Spring represents a chance to turn up the dial, get re-energized. It's the return of flea markets, outdoor shows, and time for planning for the Annual Cambridge Convention.

This year's convention could be our very best ever. A number of new programs are being planned for first-time attendees to help you enjoy your visit. We want you to quickly become a friend and not a stranger. In the next month or two, you'll be learning more about the things in store, including special savings and get togethers. We want you to feel welcome.

Our membership is our lifeblood. We need it to achieve our mission and keep the club's solvency. At the the last board meeting, we reviewed our 1996 budget in depth. One board member said it was the most open discussion he could ever remember. What was clear to all of us is that we operate on a shoestring.

As we enter this year, we stare at a slightly negative cash flow given the increased paper costs for our monthly newsletter. Without our annual June mini-auction and various donations throughout the year, we would not make up this shortfall. However, we are very optimistic we will. In this "era of inclusion" the board has established, we welcome any of your questions and any suggestions you might have.

More good news. We continue to get more new volunteers. Member Tom Burske has expressed interest in helping the club with an Internet Home Page. This could be great and we look forward to hearing more about this in the months ahead. Also, we got our first two volunteers for the "Emergency" Committee. My thanks to Clarke West and Linda Roberts. Can we hear from more of you within a two-hour drive of Cambridge?

Charles Upton, our dedicated treasurer, reported at the March Quarterly Meeting that our Building Fund is doing great. In less than four months, we have already recouped our "load-in fee" and are three percent to the good in interest. That's about as much as this account earned all of last year!

My personal thanks to Lynn Welker for another fabulous job as auction chairman. Given his travel schedule, we'll need more volunteer help next year to pull off this crucial event. If you're interested in giving a hand, please drop us a note at the Museum.

And finally, as another sure first sign of spring, our museum is open for the season. Our interior committee, led by J.D. Hanes, has the Museum in great shape. We hope you can visit soon! Spring is a great time for a trip to Cambridge.

Pick

(AUCTION - Continued from page 1)

Blue Alpine Caprice platter. The winner was NCC member Squeek Rieker, who donated the plate to be auctioned. Kelvin Moore then purchased the piece and donated it to the museum.

During the day, 374 lots of Cambridge glass were sold. Again this year, Craig Connelly of Granville, Ohio, served as auctioneer. Craig, along with his assistant, John Kennard, motivated eager bidders throughout the day to compete for their favorite piece. They combine a talent for selling Cambridge glass with an excellent audience rapport to make the auction a pleasure to attend.

A few of the rare and unusual items sold were: a Carmen jigger stopper, \$120; a 3400 Amethyst 64 oz. jug with acorn finial, \$175; a Crown Tuscan 8 1/2" swan with Charleton Gardenia decoration, \$650; a Gold Krystol turkey, \$775; a 3116 goblet engraved Cambridge Glass Company, \$675; an Owl lamp, \$700; and a Crown Tuscan 12" urn and cover gold encrusted Diane with the acid signature, \$775.

The auction marks the reopening of the National Cambridge Collectors' Museum on Rt. 40 East in Cambridge, Ohio. The next major event will be the annual convention and antique show and sale June 21 - 23. We hope to see you there!

Museum Moments

by J.D. Hanes

Will spring ever get here? Mother Nature has teased us with some nice days, but as I write this we are having another snowstorm.

The museum opened for the season on the weekend of the annual auction. We are open for weekends only during March. We then start our regular hours of 10:00 a.m. to 4:00 p.m., Wednesday through Saturday, and noon to 4:00 p.m. on Sunday in April.

It was wonderful to see so many of you at the annual auction. However, as with most events, there is never enough time to visit with all of the people that you want to. The auction was another great success. Thanks need to go to: those who consigned and donated glass; those who bid and bought glass, whether you were at the auction or participated by mail; and of course, Lynn Welker, chairman, and the members of his auction committee. You will find the list of prices on Page 14 of this issue.

At the museum, we have made some changes to the displays and are working on more. One problem that we are facing, and it is a nice problem, is having so many donations and acquisitions to put away. The cases are becoming crowded and we will be having to return some loaned items to their owners. Along this line of thinking, this organization owes a great deal of thanks to the approximately 35 people who loan glass for display in the museum. They are to be commended for their generosity in aiding the museum in its educational endeavors.

As there has not been too much else going on, I'll keep this short. Until next month, Happy Cambridge Hunting!

1996 Flea Market Update

The 1996 NCC Flea Market will be held at the same facility as last year. The Beech Grove Family Center is located on Rt. 209, 1 1/2 miles south of the motels and restaurants. The hours will be:

early bird 7:00 a.m. - 8:00 a.m.
admission \$10

8:00 a.m. - noon
admission \$2

Chairman Mike Arent has already sent out the dealer contracts. If you did not receive one or are interested in setting up this year, please call Mike at (614) 439-4582 or send a note to the NCC address.

1996 Calendar Planning

The following are tentative dates for major club activities during 1996:

May	Board of Directors Elections
June 20-23	1996 Convention
August 3	Quarterly Meeting/Picnic
November 2	Quarterly Meeting/Program

Auction 1996 Photo View

Photographs by Mike Neilson



Left to right, Anna Walker and Cindy Arent discuss the beautiful Show and Tell glass.



Left to right, Roger Hawk, Floyd Ham, Jack Smith, and Suzanne Smith preview the auction glass.



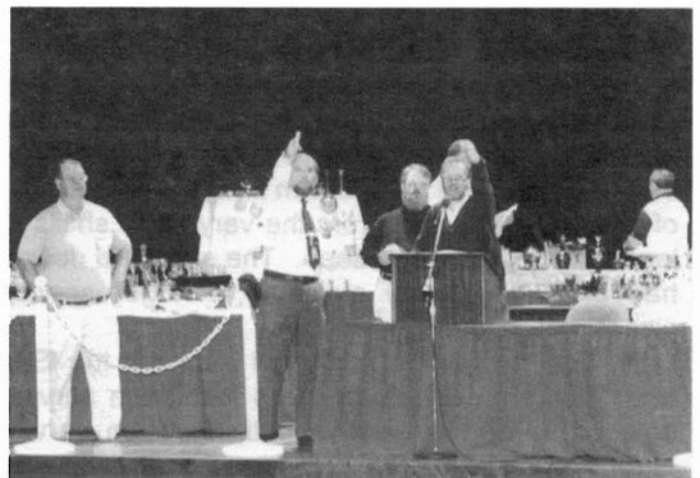
Auction glass included an Owl Lamp and a Monkey Lamp surrounded by Amber pieces.



Pieces of Crown Tuscan with Charleton decoration and gold encrusting were found among the auction glass.



Auction chairman, Lynn Welker, holds an Ebony humidor/gold encrusted Hunt Scene, which sold for \$525.



Auctioneers John Kennard (left) and Craig Connelly motion to bidders. Bill Hagarty, Tarzan Deel and Joy McFadden look on.

Sea Shell Line

by Mark Nye

In 1935 Cambridge introduced what was to become its signature etching, Rose Point. Making its debut that same year was the Sea Shell line, an apt description of this pressed pattern with its varied selection of pieces.

The first trade journal reference to Sea Shell appeared in the February 1935 issue of CHINA, GLASS AND LAMPS. "Sea-Shell is a new Cambridge Glass Co. creation, marine motifs with the shell predominating...produced in new translucent coral color and also in carmen, amber, royal blue, forest green and amethyst. Bowls, plates, fish platter, sea-food cocktails, compotes, centerpieces, relishes, vases and other items in sea-shell design, candlesticks, candelabra, and epergnes with dolphin and shell or sea-maiden motifs."

Cambridge featured what we now call the "flying lady bowl" and 3011 or Nude candlesticks with bobeches and prisms in a full page advertisement published in the March 1935 issue of CHINA, GLASS AND LAMPS. The text read: "As refreshing as May breeze is this new and delightful 'Sea Shell' line decorated with the modeled figure of a sea maid. Embracing such items as compotes, candlesticks, centerpieces, sea-food cocktails, bowls, plates, vases and relishes, its colors of Amber, Carmen, Royal Blue, Coral, Amethyst, and Forest Green present a variety of the widest range. Shells, dolphins and sea maid motifs have inspired these shapes. You will be delighted to sell them."

An unknown writer had this to say about the Sea Shell line in a short article, headlined "Seafood Service In Sea Shell," published in the April 1935 CHINA, GLASS AND LAMPS:

"In distinctive variety, the new glassware line called 'Sea Shell' from the Cambridge Glass Co., is one of the outstanding developments thus far in 1935. Motifs have been drawn from the many kinds of dwellers in the sea, from the very small shells to legendary maids of the deep. The sea maid design has been used very strikingly in larger service pieces, bowls and candlesticks.

"It was natural that additional pieces in the 'Sea Shell' line should include items for use in serving seafood. Food is more appetizing when served attractively and what could add more to the enjoyment of a shrimp or lobster meat cocktail than the unique seafood cocktail glass shown in the

illustration? This piece is highly reminiscent of the sea.

"With the cocktail is shown the salad plate in the 'Sea Shell' line. This design also has a tang of the seashore to it and like the others of the seafood items should be very welcome along the seashore and at summer resorts generally as warm weather comes.

"The seafood cocktail and salad plate are shown in the new Coral color, a new glass shade with a tinting of coral on bluish white. The 'Sea Shell' line also is made in amber, carmen, royal blue, amethyst, green and crystal."

The following month, May 1935, the first mention of the color Moonstone appears in an advertisement featuring several pieces from the Sea Shell line.

In the July 1935 CHINA, GLASS AND LAMPS issue appeared a picture of three Sea Shell line vases, nos. 46, 47 and 49 with this caption: "In the photograph...you will see three new items recently added by the Cambridge Glass Co. to the much liked Sea-Shell line, and they are obtainable in either coral or moonstone. This line, introduced last January, has proved to be among the most popular of the Cambridge creations."

Then in October 1935, this text accompanied an illustration of the Sea Shell (aka Caprice) dolphin-footed covered cigarette box and ashtrays: "Smokers' articles always are leading sellers during the Winter season and for the approaching Holiday season there are many new and unusual things being offered. The illustration shows a covered cigarette box and ash trays to match from the popular Sea Shell line of the Cambridge Glass Co., Cambridge, Ohio...The Sea Shell smokers ware comes in a choice of crystal, moonstone and coral. The ware is hand made and finely finished."

There has been much debate regarding the color name "Coral." This color name first appeared in February 1935 as one of the colors in which the Sea Shell line was available. This color name was never used for anything other than the Sea Shell line. It is generally believed it does not differ from Crown Tuscan and the name Coral was coined for sales purposes. There are significant variations in Crown Tuscan. Primarily it is an opaque pinkish color that will range from the opaque to near translucent and in

(Continued on page 9)



The Cambridge Glass Company



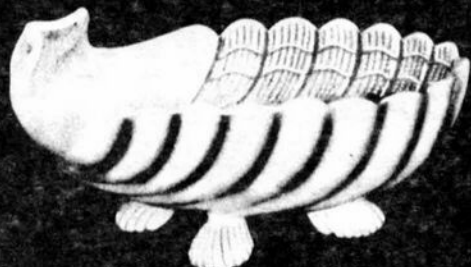
Seashell



15-6 in. Comport



21-6 in. Ftd. Candy Box & Cover



31-8 in. Oval Dish



16-7 in. Comport



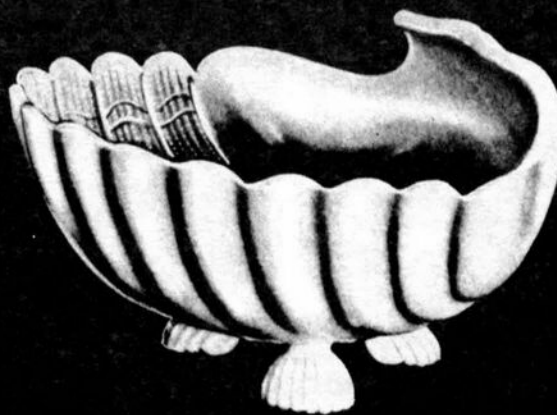
12-8 in. Comport



14-9 in. Comport



18-10 in. 3 Toed Bowl



17-9 in. 3 Toed Bowl

JANUARY 1, 1940

Cambridge, Ohio - - - U. S. A.



The Cambridge Glass Company



Seashell



61-9 in. Candelabrum (3011)



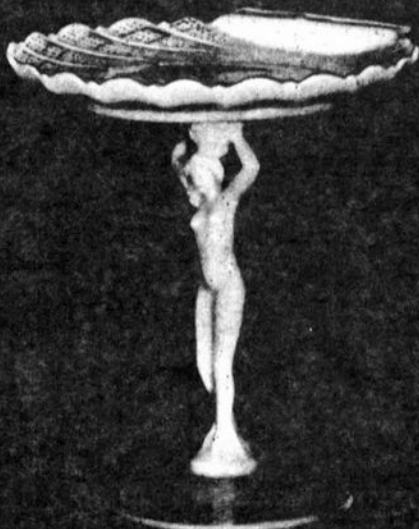
110-4 oz.
Sea Food Cocktail



66-4 in. Ftd. Candlestick



60-9 in. Candlestick



11-7 in. Comport (figure)



647-6 in. 2 Holder Candlestick



10-5 in. Comport (figure)

JANUARY 1, 1940

(SEA SHELL - Continued from page 6)

shades that range from near tan to almost white. These variations will be encountered when collecting Sea Shell.

Moonstone is not really a distinct color; rather it is frosted Crystal and the name was apparently not used outside the Sea Shell line. Although not often seen today, most Sea Shell items were made with the Moonstone finish, as it is properly known.

Originally Sea Shell was written as two words but by the time the 1940 Cambridge catalog was issued, it was being written as Seashell.

Production of the Sea Shell line in colors other than Crystal and Coral ceased prior to 1940. The 1940 Cambridge catalog offered the Seashell line in Coral only while the same pieces, plus others, in Crystal were being sold as the Krystalshell line. More on the Krystalshell line next month.

The Sea Shell No. 2 seven-inch salad plate was also produced in a nine-inch version and listed as a dinner or fish plate. Discontinued by 1940 and not shown in the 1940 catalog was a different style of bread and butter plate and salad plate. This second style was completely round, that is it did not have the flat side that resembles a shell's hinge, and had a scalloped edge similar to the salad bowls. There was no nine-inch plate in this style.

With the exception of cups and saucers, a table setting in Sea Shell was available. It consisted of bread and butter plate, salad plate, dinner plate, 4 oz. seafood cocktail, and a 6 oz. sherbet. Serving pieces consisted of bowls, comports, and a 14-inch plate. The table could be accessorized with flower centers and candlesticks.

Most of the Shell line was discontinued during the 1940s with just a few pieces appearing in the 1949 Cambridge catalog. When Mandarin Gold and Emerald (dark) were brought out in late 1949, three pieces from the Sea Shell (SS) line were made in these colors: the SS 31 eight-inch oval dish, the SS 35 cigarette box and cover, and the SS 33 four-inch three-footed ashtray.

The Cambridge Milk Glass line was introduced in late 1953 and early 1954, just months before the factory closed for the first time. In the Milk Glass line were a number of Sea Shell items. Rarely seen today, these included the dolphin candlestick, a sugar and cream, seven-inch salad plate, the eight-inch oval dish and more. Based on existing catalogs, it appears the sugar and cream were not in the original Shell line. They were most likely produced by

modifying molds for pieces such as the seafood cocktail and/or sherbet. The Milk Glass Shell line is pictured in the 1949-53 catalog reprint available through NCC.

Bogart's
Bed & Breakfast

62 W. Main Street, New Concord
New Concord lodging in 1830 Federal
Style home, decorated with
antiques throughout.



Bogart's Antiques
7527 E. Pike, Norwich OH
Quality Antiques Bought & Sold

OWNERS: Jack & Sharon Bogart
872-3514 or 826-7439

1996 SIXTEENTH ANNUAL
Fostoria Glass
Society CONVENTION
SHOW & SALE



"Fostoria: By Candlelight"
DELF NORONA MUSEUM
Eighth Street & Jefferson Avenue
Moundsville, West Virginia

Friday, June 7, 1996 Premiere Show and Sale	Premiere Admission \$8.00 6:00 P.M. - 9:00 P.M.
Saturday, June 8, 1996 Show and Sale Glass Auction Marshall County Fairgrounds 12th Street, Moundsville, W. Va.	General Admission \$3.00 11:00 A.M. - 5:00 P.M. 6:00 P.M.
Sunday, June 9, 1996 Flea Market - Free Admission Show and Sale	General Admission \$3.00 10:00 A.M. - 2:00 P.M. 11:00 A.M. - 4:00 P.M.

Moundsville Chapter Flea Market
June 9, 1996

Set-Up 8:00 A.M. \$15 Per Couple Fee
Early Buyer Fee \$15 Per Couple
Free Admission at 10:00 A.M.
Contact Clara Robinson - (304) 845-3897

For More Information Contact:
Fostoria Glass Society of America, Inc.
P.O. Box 826, Moundsville, W. Va. 26041
Call (304) 845-9188 or (304) 737-2006

CONVENTION 1996 UPDATE

by Mark Nye, Convention Chairman

CONVENTION 1996 CAMBRIDGE IN THE 1940s

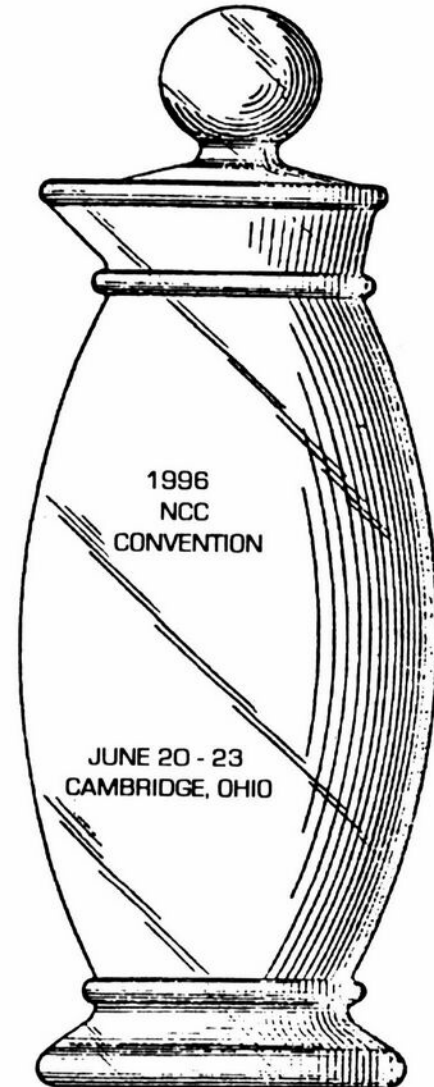
If you haven't already done so, now is the time to make plans to attend the 1996 NCC Inc. Convention, June 20 - 23. Motel reservations should be made as soon as possible to assure getting into your first choice of motels. The most affordable rooms are booked quickly. All of the Cambridge motels are in the same general area and routes to all convention events are the same from any of the motels.

A preliminary event schedule is located on the next page in this issue. No major changes are anticipated in the schedule but starting times for some events may change slightly between now and convention time. Another schedule will be published in the June issue and the final schedule will be in the convention registration packet.

The convention registration form will be published in the May issue and the deadline for receiving the completed forms in Cambridge will be June 15. There will be NO increase in convention fees this year. Any changes to the convention schedule that are known by the time the May issue goes to press will be included in a Convention Update article.

New this year will be an Orientation/Get Acquainted Session(s) for those attending their first convention. One such gathering will be on Thursday afternoon and a second one will be held sometime on Friday. First time attendees will have the opportunity to meet officers and board members, as well as learn more about how the convention "works" and the various events, plus how to find their way around Cambridge.

In last month's Convention Update, the possibility of changing the time for the annual meeting was mentioned. After much discussion at the March meeting of the NCC Board of Directors, it was decided not to move the meeting from its current time, Sunday morning. The basic reason for not making the change is the lack of any other open time slot. Moving it to any other time would have meant changing or eliminating other events and the board



agreed this would not be beneficial. It is the desire of the board that as many members as possible make plans to remain in Cambridge until after the annual meeting concludes around 11:00 a.m.

The subject of Willard Kolb's post banquet speech is the Rodefor Glass Company of Bellaire, Ohio. This little-known company was a neighbor of Imperial Glass Corporation and attendees will be surprised when they hear more about it and its products from Willard.

NATIONAL CAMBRIDGE COLLECTORS, INC.
23rd ANNUAL CONVENTION
JUNE 1996
PRELIMINARY EVENT SCHEDULE

THURSDAY, JUNE 20

9:00 a.m.	Registration Desk Opens	Pritchard Laughlin Civic Center
9:30 a.m.	Fenton Factory Tour Departs	Pritchard Laughlin Civic Center
9:30 a.m.	Snap Identification/Sorting Session	NCC Museum Storage Building
3:00 p.m.	Orientation Session - First Timers	Conference Room - Pritchard Laughlin Civic Center
7:00 p.m.	Picnic	Site to be announced

FRIDAY, JUNE 21

8:30 a.m.	Coffee With Cambridge	National Cambridge Collectors, Inc. Museum
9:00 a.m.	Registration Desk Opens	Pritchard Laughlin Civic Center
1:30 p.m.	Cambridge & The 1940s - Mark Nye	Conference Room - Pritchard Laughlin Civic Center
2:30 p.m.	1940s Rock Crystal Engravings	Conference Room - Pritchard Laughlin Civic Center
4:30 p.m.	Antique Show Opens	Exhibit Hall - Pritchard Laughlin Civic Center
7:30 p.m.	Convention Chairman's Reception - Cash Bar	Galleria - Pritchard Laughlin Civic Center
8:00 p.m.	Friday Night Supper	Galleria - Pritchard Laughlin Civic Center
9:00 p.m.	Mini-Auction	Galleria - Pritchard Laughlin Civic Center

SATURDAY, JUNE 22

7:00 a.m.	Flea Market Opens	Beech Grove Family Development Center
11:00 a.m.	Antique Show Opens	Exhibit Hall - Pritchard Laughlin Civic Center
1:00 p.m.	To Be Announced	Conf. Room - Pritchard Laughlin Civic Center
3:00 p.m.	Glass Identification - Lynn Welker	Conference Room - Pritchard Laughlin Civic Center
4:00 p.m.	Bring & Brag - Lynn Welker	Conference Room - Pritchard Laughlin Civic Center
6:30 p.m.	President's Reception - Cash Bar	Galleria - Pritchard Laughlin Civic Center
7:00 p.m.	Annual Banquet	Galleria - Pritchard Laughlin Civic Center

SUNDAY, JUNE 23

8:30 a.m.	Buffet Breakfast	Galleria - Pritchard Laughlin Civic Center
9:30 a.m.	Annual Meeting	Galleria - Pritchard Laughlin Civic Center
11:00 a.m.	Antique Show Opens	Exhibit Hall - Pritchard Laughlin Civic Center
1:30 p.m.	Cambridge Glass Co. Workers Reunion	Pritchard Laughlin Civic Center

1996 CONVENTION BRIEF MOTEL INFORMATION

The following motels are all located in Cambridge at Exit 178, Ohio Rt. 209, off of Interstate 70.

BEST WESTERN CAMBRIDGE

1945 Southgate Parkway
614-439-3581
No extra for children
One week cancellation notice
Approximately 50 rms available \$55 single or double

DEER CREEK MOTEL

2325 Southgate Parkway
614-432-6391 For reservations call 800-637-2917.
24 hour cancellation notice. Approximately 50 rms available. \$45.95 single or double. \$49.95 3-4 per room.

TRAVELODGE OF CAMBRIDGE

State Rt. 209 North
614-432-7375
One week cancellation notice.
Approximately 15 rms available. \$50 single, \$55 double with 1 bed, \$61 double 2 queen size beds.

HOLIDAY INN CAMBRIDGE

2248 Southgate Parkway
614-432-7313
One week cancellation notice. Approximately 30 rms available. \$79 single or double.

DAYS INN CAMBRIDGE

2328 Southgate Parkway
Children free.
Approximately 45 rms available.
614-432-5691
\$65 single or double weekdays
\$89 single or double weekends

The following motels are located in or near Zanesville which is approximately 23 miles west of Cambridge. All are conveniently located near to Interstate 70.

Holiday Inn
I-70 at Exit 160
614-453-0771

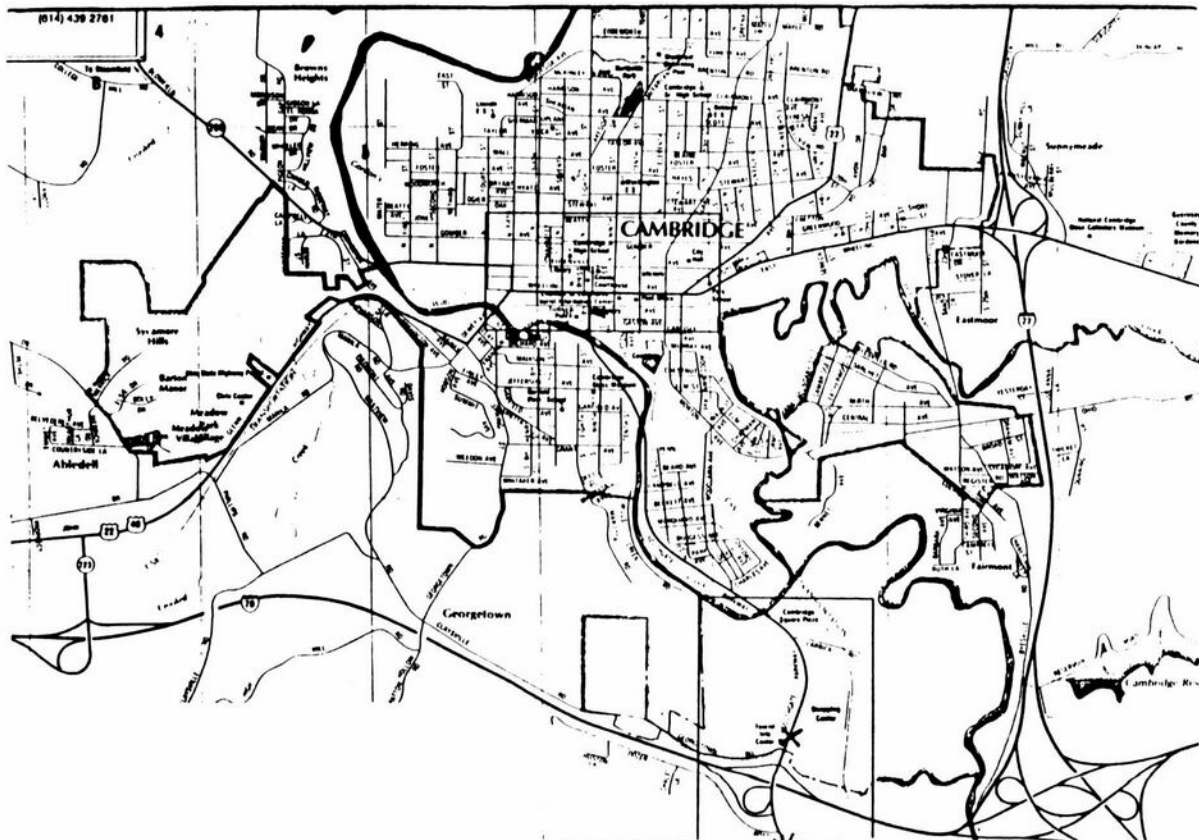
Days Inn
I-70 at Exit 160
614-453-3400

Comfort Inn
I-70 at Exit 155
614-454-4144

Fairfield Inn by Marriott
I-70 at Exit 155
614-453-8770

Best Western
I-70 at Exit 155
614-452-4511

It is strongly recommended that NCC members and friends book their reservations NOW or as soon as possible. The most affordable rooms fill up quickly. To obtain the special rates at Best Western, Deer Creek, and Travelodge motels, you must specify you are attending the NCC Convention.



↓ To Flea Market
X = MOTELS

NATIONAL STUDY GROUP REPORTS

Study Group #13 The Miami Valley (Ohio) Study Club

The monthly meeting of the Miami Valley Study Club was called to order at 6:58 p.m. on February 13, 1996 at the Huber Heights Library by President Georgia Otten. Sixteen members were present: Ron and Norma Hufford, Ken and Judy Rhoads, Frank and Vicki Wollenhaupt, George and Beverly Stamper, Dave and Sue Rankin, Al Tuttle, Fred Schaefer, John and Helen Wilt, Mac and Georgia Otten. We are so pleased to have added new members to our club.

Since our January meeting was canceled because of the blizzard, our programs for the rest of the year have been realigned: March 12 - "Stemware," led by Mac and Georgia Otten; April 9 - "Oglebay Museum," led by Norma and Ron Hufford; May 14 - "Caprice," led by Ken and Judy Rhoads and George and Bev Stamper. Other business discussed concerned the Quarterly Meeting and Benefit Auction, our etchings book, and correspondence.

Our program was led by Frank and Vicki Wollenhaupt. Between 1974 and the mid-1980s, Frank took detailed photographs of the glass displays at Cambridge shows and sales during annual conventions. The program consisted of a showing and discussion of these slides. Seeing these slides was a real treat as we were able to see many rare and unusual pieces of Cambridge glass that had been displayed in years past.

Study Club members displayed their recent finds during Show and Tell: #3121 Rosepoint bell; #1321 Amber decanter and #7966 glasses; Moonlight Blue Caprice 13 1/2" shallow bowl; #3500 Gadroon individual creamer; #3500/28 Gadroon 12" fruit basket with cutting; Windsor Blue #647 2-lite candelabrum; Amber ink bottle with stopper; #3400/646 Carmen 5" keyhole candlestick; Saratoga Hat toothpick or matchholder; #1917/256 Avocado Plainware mayonnaise and underplate; Royal Blue #2 muddler; #605 Pink cigarette box; #1358 Caprice 3-holder candelabrum with #19

bobeches and #1 prisms; #968 cocktail and liner, etched Wildflower (or "Early Wildflower"?); #168 Dianthus Pink center-handled sandwich tray, satin finish with decalware; #3051 Light Emerald Green narrow optic cordial, etched #740; #502 2-lite Pristine candlestick with cutting; Pristine cheese and cracker, etched Firenza; #3400/92 32 oz. decanter, decorated with D987; #3500/79 3" Royal Blue basket; #138 Light Emerald Round Line cream and sugar, etched #703; #94 Jade Sweet Pea vase, UE-88; Peachblo cologne with stopper, etched #704.

-Submitted by Judy Rhoads, Secretary

(Continued on page 16)



Our dealers are constantly restocking their shelves at the . . .

DEXTER CITY ANTIQUe MALL

P.O. Box 70
Dexter City, Ohio 45727

. . . Come in and see what's new - or call (614) 783-5921 if there's something special you're looking for. We'll do our BEST to help!

1996 Benefit Auction Results - Prices Per Lot

1. 15.00	52. 70.00	104. 45.00	156. 150.00	207. 45.00	259. 55.00
2. 105.00	53. 100.00	105. 210.00	157. 155.00	208. 150.00	260. 30.00
3. 60.00	54. 70.00	106. 175.00	158. 775.00	209. 75.00	261. 20.00
4. 115.00	55. 112.50	107. 200.00	159. 145.00	210. 25.00	262. 80.00
5. 35.00	56. 50.00	108. 275.00	160. 20.00	211. 60.00	263. 50.00
6. 65.00	57. 17.50	109. 170.00	160. 20.00	212. 55.00	264. 75.00
7. 30.00	58. 20.00	110. 45.00	161. 30.00	213. 105.00	265. 20.00
8. 100.00	59. 17.50	111. 35.00	162. 115.00	214. 175.00	266. 35.00
9. 70.00	60. 25.00	112. 200.00	163. 85.00	215. 80.00	267. 15.00
10. 65.00	61. 12.50	113. 15.00	164. 130.00	216. 110.00	268. 50.00
11. 32.50	62. 75.00	114. 15.00	165. 110.00	217. 105.00	269. 40.00
12. 105.00	63. 40.00	115. 15.00	166. 70.00	218. 80.00	270. 7.50
13. 55.00	64. 45.00	116. 25.00	167. 100.00	219. 150.00	271. 60.00
14. 50.00	65. 170.00	117. 25.00	168. 115.00	220. 115.00	272. 75.00
15. 75.00	66. 170.00	118. 40.00	169. 125.00	221. 75.00	273. 100.00
16. 55.00	67. 50.00	119. 30.00	170. 115.00	222. 105.00	274. 80.00
17. 30.00	68. 100.00	120. 65.00	171. 20.00	223. 95.00	275. 80.00
18. 40.00	69. 150.00	121. 50.00	172. 45.00	224. 65.00	276. 115.00
19. 20.00	70. 65.00	122. 55.00	173. 35.00	225. 30.00	277. 675.00
20. 20.00	71. 300.00	123. 7.50	174. 35.00	226. 70.00	278. 525.00
21. 115.00	72. 195.00	124. 35.00	175. 45.00	227. 130.00	279. 700.00
22. 30.00	73. 55.00	125. 25.00	176. 135.00	228. 85.00	280. 325.00
23. 25.00	74. 45.00	126. 105.00	177. 25.00	229. 95.00	281. 90.00
24. 55.00	75. 80.00	127. 400.00	178. 70.00	230. 65.00	282. 15.00
25. 45.00	76. 75.00	128. 75.00	179. 17.50	231. 75.00	283. 15.00
26. 20.00	77. 50.00	129. 160.00	180. 100.00	232. 20.00	284. 15.00
27. 30.00	78. 90.00	130. 90.00	181. 60.00	233. 45.00	285. 60.00
28. 90.00	79. 300.00	131. 70.00	182. 30.00	234. 40.00	286. 25.00
29. 10.00	80. 115.00	132. 80.00	183. 37.50	235. 35.00	287. 90.00
29. 10.00	81. 70.00	133. 175.00	184. 110.00	236. 35.00	288. 30.00
30. 65.00	82. 170.00	134. 115.00	185. 90.00	237. 40.00	289. 15.00
31. 70.00	83. 84.00	135. 130.00	186. 40.00	238. 65.00	290. 25.00
32. 40.00	84. 12.00	136. 55.00	187. 20.00	239. 55.00	291. 17.50
33. 90.00	85. 60.00	137. 100.00	188. 16.00	240. 45.00	292. 25.00
34. 105.00	86. 55.00	138. 75.00	189. 50.00	241. 60.00	293. 50.00
35. 475.00	87. 15.00	139. 35.00	190. 45.00	242. 35.00	294. 25.00
36. 30.00	88. 40.00	140. 90.00	191. 40.00	243. 15.00	295. 40.00
37. 55.00	89. 45.00	141. 120.00	192. 35.00	244. 775.00	296. 10.00
38. 55.00	90. 15.00	142. 45.00	193. 90.00	245. 75.00	297. 35.00
39. 45.00	91. 40.00	143. 175.00	194. 100.00	246. 65.00	298. 15.00
40. 7.50	92. 25.00	144. 80.00	195. 25.00	247. 50.00	299. 50.00
41. 160.00	93. 105.00	145. 25.00	196. 35.00	248. 160.00	300. 100.00
42. 55.00	94. 20.00	146. 105.00	197. 40.00	249. 155.00	301. 20.00
43. 50.00	95. 50.00	147. 650.00	198. 95.00	250. 80.00	302. 25.00
44. 55.00	96. 75.00	148. 55.00	199. 75.00	251. 50.00	303. 35.00
45. 100.00	97. 145.00	149. 140.00	200. 80.00	252. 100.00	304. 130.00
46. 40.00	98. 55.00	150. 85.00	201. 55.00	253. 65.00	305. 60.00
47. 55.00	99. 120.00	151. 200.00	202. 245.00	254. 75.00	306. 25.00
48. 45.00	100. 95.00	152. 65.00	203. 50.00	255. 85.00	307. 60.00
49. 35.00	101. 95.00	153. 45.00	204. 60.00	256. 75.00	308. 80.00
50. 25.00	102. 80.00	154. 95.00	205. 295.00	257. 25.00	309. 65.00
51. 65.00	103. 125.00	155. 50.00	206. 140.00	258. 55.00	

(Continued on page 15)

310. 105.00	332. 70.00	355. 105.00
311. 54.00	333. 12.50	356. 110.00
312. 49.00	334. 10.00	357. 95.00
313. 150.00	335. 15.00	358. 70.00
314. 25.00	336. 60.00	359. 90.00
315. 45.00	337. 130.00	360. 225.00
316. 25.00	338. 25.00	361. 280.00
317. 162.50	339. 35.00	362. 80.00
317. 162.50	340. 100.00	363. 80.00
318. 40.00	341. 80.00	364. 40.00
319. 40.00	342. 55.00	365. 35.00
320. 50.00	343. 25.00	366. 30.00
321. 25.00	344. 55.00	367. 95.00
322. 70.00	345. 45.00	368. 20.00
323. 50.00	346. 170.00	369. 55.00
324. 100.00	347. 85.00	370. 47.50
325. 50.00	348. 17.50	371. 65.00
326. 50.00	349. 35.00	372. 125.00
327. 9.00	350. 510.00	373. 25.00
328. 60.00	351. 65.00	374. 35.00
329. 50.00	352. 320.00	375. 50.00
330. 50.00	353. 200.00	
331. 45.00	354. 180.00	

CORRECTIONS TO 1996 BENEFIT AUCTION CATALOG LIST

- # 5 one chipped inside
- #82 small chip on the breast
- #375 addition #28 Moonlight Blue Caprice Alpine 14" footed plate, scratched

Project Committee Report

by Tarzan Deel, Jr.

A lot has been going on and communications have not been one of our strong points this last quarter. I reported that we had sold out of the Cambridge prism signs at the March Quarterly Meeting. I was incorrect. We still have a limited quantity available. These signs will be issued on a first come basis. Please use the order form below. Please remember all proceeds go to the museum operating fund.

Bill Hagerty has been investigating the possibility of making a non-glass item. Bill has found the plastic mold for salt shakers, and it may be available soon. A lot of work still remains to be done, so stay tuned. Good luck, Bill.

Charles Upton had postcards produced for the museum which show the Cambridge Glass Co. factory as it appears in the Near Cut book. These are available at the museum for 50 cents each.

If you have any ideas for projects, please feel free to let us know by dropping us a line at the NCC post office box.

The **DAZE** Inc.

SPECIAL OFFER
to NCC friends
\$2.00 OFF
the 1 year subscription price
when on this form or copy of it.

The Original National monthly newspaper dedicated to the buying, selling and collecting of American made glassware china, and pottery from this century. We educate and inform you each month with feature articles by top notch writers, readers letters, club happenings, reproduction news, show reports and there are hundreds of dealers to help you fill in the missing pieces of your collection. "Keep up with what's happening" . . . Subscribe today!

Name _____
Street _____
City _____
State _____ Zip _____

1 year \$21.00 2 years \$40.00 \$2.00 Single Copy
Subscription Hot Line: 1-800-336-9927

Exp. Date _____ Card No. _____
Signature _____

Orders to:

The Daze, Inc., Box 57, Otisville, MI 48463

Please allow 30 days for your first issue - Canadian Subscribers, add \$1.00 per year and subscribe by charge card only! This Special Offer may not be combined with any other special offer.

Offer Expires December 31, 1995

CAMBRIDGE PRISM SIGN ORDER FORM

MINT JULEP by Boyd's Art Glass

Subject to availability

Name: _____

Address: _____

ordered @ \$25/each: _____

Postage @ \$4/order: _____

Ohio sales tax @ \$1.63/each: _____
(Ohio residents only)

Total cost of order: _____

Please make checks payable to NCC Inc.
NCC, P.O. Box 416, Cambridge, Ohio 43725

ASK NCC: LETTERS FROM MEMBERS AND FRIENDS

Dear Cindy,

Re: Publicity Update in Issue #274

My. What a time saving suggestion.

We have been inventorying the candleholder collection, adding correct etch numbers, mold numbers and colors. A big problem with them is the space they each require. So, some things are being designated for being boxed, for garage sale or give-away to make room for candleholders on display.

My "choose to buy" decisions are not always understood by my "one-track-mind" husband. He says they are not decisions; they are whims. Oh, well. Some of "those" are offered to the club for your "ready-to-go" package.

1. Sherbet - Martha Washington - Crystal #45 7 oz. tall
(A few use scratches. Didn't see for dust!)
2. 2 Sherbets - Apple Blossom - Gold Krystal Stem #3130 Etch #744 6 oz. low
(Repaired rims - done nicely.)
3. Stemmed Tumbler/Ftd. Ice Tea - Caprice Crystal - Blown - #300/2 12 oz. 6 1/8"
(1/4" crack at rim - Be careful!!)
4. Tumbler - Caprice - Moonlight Blue #180 5 oz.
(Tiny flake-chips on rim. Just a couple.)
5. Sherbet - Caprice - Alpine (Crystal) #300 6 oz. low
(1 tiny, tiny nick at rim. Keep searching.)

I hope you get a good response from others. Keep up the good work.

Vivian Dorsett

P.S. Let me know if and when you want these items - I'll UPS them whenever you want. Also when we get into the "glass" part, maybe I'll find some pink and green items. Amber, Ebony? But you can't have my Carmen!

(Continued on page 18)

(STUDY GROUP - Continued from page 13)

Study Group # 14 The Cambridge Cordials

The Cambridge Cordials met February 17 at the Museum. Ten members were present. The group identified and discussed the glass on display.

On March 23, the Cordials met at the home of Rich and Sally Bennett. Twelve members were present. One of the topics of the evening was what glass is being found by the members. A discussion followed regarding the auction list; what the group had discussed previously as expected prices for the pieces of glass in the auction and what were the actual successful bids. Also discussed were the continuing study group projects. A brief Show and Tell session rounded out the evening.

The next meeting will be April 27 at the Museum.



The Bay State Heisey Club

Eighteenth Annual Show & Sale

April 27 & 28, 1996



Nationally Prominent Dealers Featuring: Depression, Elegant, Early American, and European Glassware China, Pottery, Kitchenware & Collectibles of all Types

- View a special exhibit of birds in glass •
- Glassware for identification Sunday 12:00 to 2:00 •
bring along your unknown pieces

admission includes: exhibit, sales area, & glass I.D.

Saturday
10:00 to 5:00

Sunday
10:00 to 4:00

Admission
\$3.00
--
with this ad
\$2.50

**John F. Kennedy Memorial
Junior High School**
Lexington Street, Waltham



Sponsored for the benefit of the National Heisey Glass Museum, Newark, OH. For information call 508.256.5418

CAMBRIDGE GLASS BOOKS FOR SALE

By National Cambridge Collectors, Inc.

Colors in Cambridge Glass

128 pages, 60 color plates, fully indexed, Hardbound with price guide \$19.95

1930-1934 Cambridge Glass Company Catalog Reprint

250 page reprint of original catalog, Paperback with price guide \$14.95

1949-1953 Cambridge Glass Company Catalog Reprint

300 page reprint of original catalog, Paperback with price guide \$14.95

1956-1958 Cambridge Glass Company Catalog Reprint

164 page reprint of original catalog, Paperback \$12.95

Cambridge Caprice

200 page book illustrating the most popular line of Cambridge Glass. Lists color, decorations, reproductions and rare pieces. Paperback with value guide \$19.95

For NCC Members, these publications at a 10 percent discount.

By Bill & Phyllis Smith

Cambridge Glass 1927-1929

66 page reprint of original catalog, Paperback with identification guide \$7.95

By Cambridge Buffs Study Group

Nearcut (Temporarily Out-of-Stock)

108 page reprint of 1910 Cambridge Catalog, Paperback with price guide \$9.95

Price Guide, Price alone, includes postage \$3.00

By Mark A. Nye

Cambridge Rose Point

94 Pages, fully indexed, Paperback with Value Guide \$12.95

Value Guide

Updated value guide for Rose Point Book, Included with above. Price alone, includes postage \$5.00

Cambridge Stemware NEW. 2nd edition. Same format as original. \$19.95

By Mary, Lyle and Lynn Welker

Cambridge Glass Company

120 pages of reprints from eight old catalogs, Paperback \$10.00

Cambridge, Ohio Glass in Color II, Spiralbound \$5.95

By Harold and Judy Bennett

1903 Cambridge Glass Company Catalog Reprint

106 page reprint of an original catalog, Paperback \$7.50

By Degenhart Paperweight and Glass Museum

Reflections, 45 page book giving a history of all 18 glass companies in Guernsey County. Paperback, with pictures. \$5.00 including postage

Address orders to: Books, National Cambridge Collectors, Inc., PO Box 416, Cambridge OH 43725-0416

Please add postage and handling to your order (first book, \$2.00; each additional book, 50 cents), Ohio residents add 6 1/2% state sales tax. Please send only check or money order, NO CASH, NO CHARGE CARDS. *Dealer Discounts Available - Please Write!*

WE CLEAN CLOUDY GLASS!

**** SATISFACTION GUARANTEED ****

YES, IT IS TRUE THAT WE REALLY CAN RESTORE THE INTERIOR OF YOUR CRUET, VASE, DECANTER AND MOST OTHER INTERNALLY ETCHED ITEMS BACK TO NEAR ORIGINAL CONDITION!

WE DO NOT OIL, WAX OR COVER UP THE SICKNESS IN ANY WAY! WE ACTUALLY REMOVE IT.

NO ITEMS ARE TOO SICK TO CLEAN! IF WE CANNOT CLEAN YOUR ITEM TO MEET YOUR SATISFACTION, THE CLEANING IS FREE!

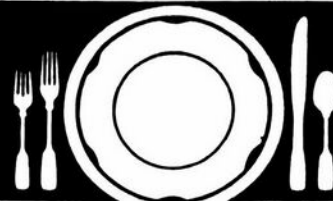
WE ARE SO CONFIDENT IN OUR SERVICE THAT WE ASK THAT YOU SEND NO MONEY. WHEN WE RETURN YOUR ITEM A BILL WILL BE ENCLOSED FOR THE POSTAGE & CLEANING. IF YOU ARE HAPPY, PLEASE SEND PAYMENT; IF NOT, RETURN THE BILL MARKED "NOT SATISFIED".

PLEASE ALLOW 6-8 WEEKS FOR REDELIVERY OF MOST ITEMS. ALL GLASS IS HANDLED AND CLEANED AT YOUR RISK. SOME VERY CLOUDY ITEMS MAY TAKE SEVERAL ADDITIONAL WEEKS.

CRUET	\$20.00	COCKTAIL SHAKER	\$30.00
COLOGNE	\$20.00	SALT SHAKER (SINGLE)	\$15.00
WATER BOTTLE	\$30.00	SALT SHAKER (PAIR)	\$25.00
DECANTER	\$30.00	CRUSHED FRUIT JAR	\$30.00
VASES (UNDER 12 IN.)	\$25.00	LAVENDER JAR	\$20-30.00

ALL OTHERS WRITE FOR QUOTE

SHIP TO: CARLISLE & ASSOCIATES
28220 LAMONG ROAD, DEPT. C
SHERIDAN IN 46069
(317) 758-5767 AFTER 6:00 P.M.



Our Stems Don't Have Thorns

As the world's largest supplier of discontinued china, crystal and flatware, Replacements, Ltd. has 54,000 different patterns and 2.1 million pieces.

We have Rosepoint, Rambling Rose, Midnight Rose, Rosebud, Rosechintz, . . .

And these stems don't have thorns.

REPLACEMENTS, LTD.

1089 Knox Road • PO Box 26029
Greensboro, NC 27420 • Dept CB

Everyday 8am-10pm
Call 1-800-562-4462

RECENT FINDS



- 12" Emerald Green Gadroon urn
- 10" wide-mouth vase with Pomona decoration
- #789 Light Emerald vase with the Dragon etch

Editor's Note: In the future, we would like to publish more pictures of the unusual finds. So, dear contributors, please take a snapshot of some of your treasures and we'll do our best to include them in a future *Crystal Ball*.

Please send photos to the NCC P.O. box. Sorry, but they can't be returned, however, we'll think about building a scrapbook of them for display in the Museum. We really appreciate your sharing your finds with all of us. Thank you.

(LETTERS - Continued from page 16)

RESPONSE:

Dear Vivian,

Thank you very much for your letter and donation. Your pieces will be a wonderful addition to our ready-to-go "traveling display." Our Cambridge glass display at the Ohio Travel Association show drew a lot of attention!

Thank you for your generosity,

Cindy Arent

[NOTE: More information about the ready-to-go "traveling display" can be found on Page 9 of the February 1996 issue of the *Crystal Ball*.]

~ GLASS ~ MARKETPLACE

Classifieds

WANTED: Tally Ho flat punch cups in crystal, any number; one #3500 Gadroon individual creamer, Diane etch; ebony #1228 9" pillow vase, no decoration. **Michael Krumme, P.O. Box 5542, Santa Monica, CA 90409-5542 (213) 936-4214.**

WANTED: Two Monkeys Lamp - Crown Tuscan Scottie or Pouter Pigeon - Also looking for #2800/234 Crystal Community Wash Basin. **If you have or find, call collect 1-609-965-2413.**

WANTED: Cambridge Arms, Epergnes plus Accessory Pieces. Vases #2355 any size and bobeches #327. Looking for a 10" or 12" Everglades Bowl and Candlesticks to buy. **Jody Stacken, 3022 Quail Creek Dr., Topeka, KS 66614. (913) 272-7118.**

WANTED: Hard to find Rose Point, Rose Point #3106 stems, Nude stems, and novelty items. Write price and description. **Nancy and Jim Finley, 711 West Broadway, Sedalia, MO 65301. Phone (816) 826-5032 or 827-0101.**

WANTED: Stopper for Nautilus Crown Tuscan 14 oz. decanter. Must be Crown Tuscan, not Crystal. Also, Carmen 14 oz. decanter. **Mike or Julie. 1815 Berwick Circle, Duluth, MN 55811. Phone: (218) 728-5410.**



DEALERS



DIRECTORY

NOTE: When writing to the dealers listed here, please enclose a SASE!

<p>DAUGHERTY'S ANTIQUES Jerry and Shirley</p> <p>Antiques and Collectibles * Mostly Glass</p> <p>Shows & Mail Orders 2515 Cheshire No. 402-423-7426 Evenings Lincoln NE 68512</p>	<p>"HAPPINESS IS" Buddy and Kathy Stultz 3106 Warren Court, Glen Allen, VA 23060 804-672-8102</p> <p>Specializing in American Made Glass We Buy & Sell, Shows & Mail Order</p>	<p>THE MUTED SWAN ANTIQUES 5486 Peachtree Rd. Chamblee, GA 30341 Heart of Chamblee Antique Row Specializing in Cambridge, Heisey and Fostoria</p> <p>Bill & Pat Miller 404-451-7620</p>
<p>Milbra's Crystal Buy & Sell Replacement and Matching Specializing in: Cambridge Fostoria Heisey and others</p> <p>Milbra Long (817) 645-6066 Emily Seate (817) 294-9837 PO Box 363, Rio Vista, TX 76093</p>	<p>BUY-SELL (513) 390-3617</p> <p>Taste of Honey Glassware - Collectibles</p> <p>Clarke West 4888 Brannan Dr. E. Carole West Springfield, OH 45502</p>	<p>ARMORY ANTIQUES 168 West Main Street Plain City, OH 43064</p> <p>QUALITY THINGS Cambridge, Heisey, China, Silver, Furniture Mon-Sat 10-5 VISA/MC 614-873-4890</p>
<p>THE GLASS URN 456 West Main Street, Suite G Mesa, AZ 85201 602-833-2702</p> <p>Mail Order Shows Open Shop</p> <p>CAMBRIDGE, FOSTORIA, HEISEY, ETC.</p>	<p>ANTIQUES ON THE MALL SPECIALIZING IN CAMBRIDGE GLASS</p> <p>Bogart's - Bldg. #3 - Norwich, OH</p> <p>Virginia Bennett 614-432-4483 64183 Warne Drive, Cambridge, OH 43725</p>	<p>GATEWAY ANTIQUE MALL, INC. JUST NW OF MINNEAPOLIS-ST. PAUL, MN Next to Super 8 in Rogers, MN (I-94/101 Intersection)</p> <p>85 Dealers 7 Days, 10-6 612-428-8286 ELAINE STORCK, DIRECTOR</p>
<p>ETTELMAN'S DISCONTINUED CHINA & CRYSTAL Cambridge a Specialty</p> <p>PO Box 6491-CB Corpus Christi TX 78466</p> <p>Phone 512-888-8391 Include S.A.S.E</p>	<p>D & D ANTIQUES Columbus, Ohio</p> <p>Dick Slifko SHOWS ONLY</p>	<p>RONI SIONAKIDES 6565 W. Herbison Rd. DeWitt, MI 48820</p> <p>517-669-5981</p> <p>Fostoria, Tiffin, Duncan, Cambridge</p>
<p>THE GLASS CUPBOARD P.O. Box 652 West End, North Carolina 27376</p> <p>Marcia Ellis Cambridge, Duncan, Heisey 910-673-2884 Shows, Mail Order</p>	<p>JUDY'S ANTIQUES Judy Bennett 422 S. Ninth Street (Corner of Jefferson) Cambridge, Ohio 43725</p> <p>BUYING Ph. 614-432-5855 SELLING</p> <p>CAMBRIDGE GLASS MY SPECIALTY</p>	<p>YOU CAN ADVERTISE YOUR ANTIQUÉ SHOP HERE!</p>
<p>FINDER'S ANTIQUE HOUSE New Home of Elegant Glassware 1169 Piney Forest Rd. Danville, VA 24540 (804) 836-6782 Cambridge-Heisey-Duncan-Fostoria</p>	<p>GREEN ACRES FARM 2678 Hazelton Etna Rd., Pataskala, OH 43062 (State Route 310 North)</p> <p>Sat & Sun 1-7 PM 614-927-1882 Antiques, Crystal Glass and Collectibles</p>	<p>CRYSTAL LADY 1817 Vinton St., Omaha, NE 68108</p> <p>Joann D. Hagerty Bus. 402-341-0643 Res. 402-391-6730 Specializing in Elegant Glass & Collectibles</p>
<p>ASK Specializing in Cambridge Wide variety.</p> <p>Booth #14 in the Antique Mall of Boswell 90 miles south Chicago, right on U.S. 41. 7 days a week 10-5, except Sun. 12-5 (317) 869-5525</p>	<p>FLORENCE SOLITO 54 Old Stafford Rd., Tolland CT 06084</p> <p>Stock All Elegant Glassware Mail Order Since 1978 Send Wants</p> <p>203-872-3294 Satisfaction Guaranteed</p>	<p>YOU CAN ADVERTISE YOUR ANTIQUÉ SHOP HERE!</p>
<p>MICHAEL KRUMME Cambridge*Heisey*Fostoria*Duncan Miller*Paden City New Martinsville*Fenton*Tiffin*Imperial*Morgantown</p> <p>I search - Send detailed want list - all kept on file PO Box 5542 Santa Monica, CA 90409</p>	<p>YOU CAN ADVERTISE YOUR ANTIQUÉ SHOP HERE!</p>	<p>MARGARET LANE ANTIQUES 2 E. Main St., New Concord, OH 43762 Lynn Welker 614-826-7414</p> <p>Cambridge Glass Matching Service Hours Mon-Fri 10-12 AM, 1-5 PM or by Appointment</p>
<p>GLASS RESTORATION</p> <p>BRILLIANT DON & LYNNE CRYSTAL WORMLAND ELEGANT MT. CLEMENS, MICH DEPRESSION 810-468-3519</p>	<p>ALADDIN LAMP BOOKS Free List Figurine Lamps Wanted Bill & Treva Courter</p> <p>3935 Kelley Rd. Kevil, KY 42053 Phone/FAX 502-488-2116</p>	<p>DEXTER CITY ANTIQUE MALL P. O. Box 70, Dexter City, Ohio 45727 (614) 783-5921</p> <p>Located on Ohio St. Rt. 821 Between Exits 16 & 25 off I-77 Just 30 min. South of Cambridge, Ohio</p>

ISAACS ANTIQUES



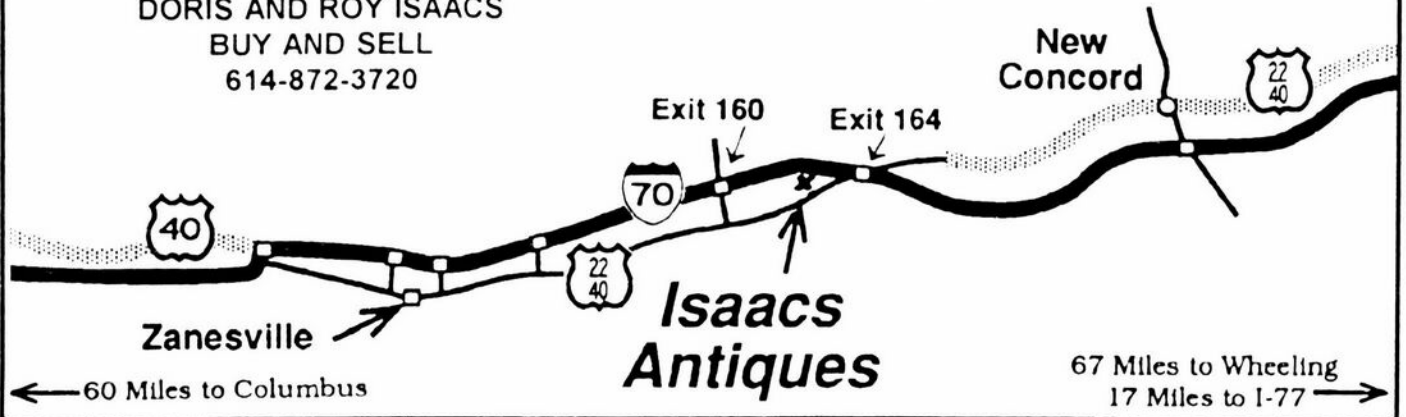
WE FEATURE GLASSWARE OF: CAMBRIDGE,
HEISEY, FENTON & FOSTORIA
Plus Art Pottery & a General Line of Antiques

DORIS AND ROY ISAACS
BUY AND SELL
614-872-3720

7525 East Pike
Norwich, Ohio 43767
614-872-3720

In East Pike Antique Complex - Rt. 40,
One Mile West of I-70 Norwich Exit #164

Hours 10 - 5:30 Mon. - Sat.
12 - 5:30 Sun.
Open Year Round



National Cambridge Collectors Inc
PO Box 416
Cambridge OH 43725-0416

FIRST CLASS MAIL
U.S. POSTAGE
PAID
PERMIT NO. 1
CAMBRIDGE, OH

FIRST CLASS MAIL

Membership Renewal Notice

**If the date on your address label is 4-96,
this is your LAST ISSUE of the Crystal Ball.**
Please take a moment and renew now. Thank you!