



Cambridge Crystal Ball

Published monthly by National Cambridge Collectors, Inc.
to encourage and report the discovery of the elegant and boundless product of the
Cambridge Glass Company of Cambridge, Ohio

Issue No. 278

June 1996

Kolb to Speak at Annual Convention Banquet

The featured speaker at this year's convention will be Willard P. Kolb who will give a presentation on the Rodefer Glass Co., formerly of Bellaire, Ohio.

Willard has been a member of NCC since 1977 and was appointed to the board of directors to fill a vacancy in 1979. He served continuously on the board until 1993, having served as president from 1980 through 1988. He served as both chairman and member of several committees.

Willard is a member of several other glass collecting societies and collects glass from many different glass companies, especially unusual and little-known pieces. Along with his interest in glass collecting, most of his efforts for the past several years have been in acquiring records, memorabilia and historic facts about glass companies, including Rodefer and Imperial.

He speaks to several different groups each year about specific glass company histories, provides historic information to nonprofit groups and provides information to persons promoting the history of the glass industry.

He is retired and finds, as most people do when they retire, that they don't have enough time to

(Continued on page 10)



Willard P. Kolb

Inside This Issue:

Transition Timing to Have Effect

Krystolshell

Convention 1996 Update

1996 Convention Schedule

Quarterly Meeting Minutes

Cambridge Crystal Ball

Official publication of National Cambridge Collectors Inc., a non-profit corporation with tax exempt status. Published once a month for the benefit of its members. All rights reserved; reproduction in whole or in part without written permission of NCC and the author is prohibited.

Membership is available for individual members at \$17.00 per year and an additional \$3.00 for associate members (12 years of age and older, residing in the same household). Of the master member dues, \$12.00 is credited to a one-year subscription to the *Crystal Ball*. All members have voting rights, but only one *Crystal Ball* per household. **Effective 1/1/96, multi-year memberships are available: 2 years for \$33.00, 3 years for \$49.00.** Back issues of the *Crystal Ball* are available for \$1.00 each or 12 issues for \$10.00. Complete sets for \$79.00.

1995-1996

OFFICERS AND COMMITTEE CHAIRPERSONS

| | |
|-----------------------------------|---------------------------------|
| President | Richard D. Jones |
| Vice President | Mark A. Nye |
| Secretary | Bud Walker |
| Treasurer | Charles Upton |
| Sergeant-at-Arms | Tarzan Deel |
| Acquisitions | Joe Andrecjak |
| Budget & Finance | Mark A. Nye |
| By-Laws | Charles Upton |
| Long-Range Planning | Tarzan Deel |
| Membership | Jeff Ross |
| Museum Expansion/Relocation | Willard Kolb |
| Museum Facilities | Carl Beynon, Joe Miller |
| Museum Interior | J.D. Hanes |
| Non-Glass Items | Tarzan Deel |
| Nominating | Joy McFadden |
| Program | Bill Hagerty |
| Projects | Tarzan Deel |
| Publications | Mark A. Nye |
| Publicity | Cynthia A. Arent |
| Study Group Advisor | Marybelle Moorehead |
| 1996 Convention | Mark A. Nye, Bud Walker |
| 1996 Auction | Lynn M. Welker |
| 1996 Antique Show | Mary Beth Hackett, Joy McFadden |
| 1996 Flea Market | Mike Arent |
| <i>Crystal Ball</i> Editor | Lorraine Weinman |

National Cambridge Collectors Inc. owns and operates the **Museum of Cambridge Glass** at 9931 East Pike Road, Cambridge, Ohio. Open April through October 9AM-4PM Wednesday through Saturday and Noon-4PM on Sunday. March open Friday-Sunday. Closed November-February, Easter, July 4th.

ADVERTISING RATES

Display Rates (camera ready ads preferred)

| <u>Unit</u> | <u>Members</u> | <u>Non-Members</u> |
|-------------|----------------|--------------------|
| Full Page | \$45.00 | \$60.00 |
| 3/4 Page | \$35.00 | \$50.00 |
| 1/2 Page | \$25.00 | \$35.00 |
| 1/4 Page | \$15.00 | \$25.00 |
| 1/8 Page | \$10.00 | \$15.00 |

Classified Rates

10 cents a word \$2.00 minimum

Abbreviations and initials count as words. Type sizes cannot be mixed in classified ads. **Payment in full must accompany all ad copy.** Contact Editor for copy assistance

Dealer Directory

Six Line Maximum \$24.00 for 12 month contract

Cambridge Crystal Ball assumes no responsibility for items advertised and will not be responsible for errors in price, description, or other information.

Advertising copy, letters, articles, must be received by the 5th of preceding month to be considered for publication in the next issue.

Please address all correspondence (include SASE) to:

National Cambridge Collectors, Inc.
P.O. Box 416
Cambridge, OH 43725-0416

| | |
|---------------------------|--------------|
| President Rick Jones | 914-631-1656 |
| Vice President Mark Nye | 517-592-6200 |
| Secretary Bud Walker | 609-965-2413 |
| NCC Museum: Phone and Fax | 614-432-4245 |

Please notify us immediately of any address change.

Opinions or information stated in any signed article or letter printed in the *Crystal Ball* are those of the author and may not agree with National Cambridge Collectors, Inc. The Editor reserves the right to refuse and to edit any material submitted for publication to conform to the editorial style of the *Crystal Ball*. Members are encouraged to write to NCC and the *Crystal Ball* sharing their knowledge and questions!

President's Message

Transition Timing to Have Effect

It is with very mixed emotions that I inform the membership that we will be undergoing a transition in the staffing of our NCC Museum. J.D. Hanes will be leaving his position as museum docent this month.

This has been coming for some time. Several months ago, J.D. took a second job in Cambridge that would afford him health coverage benefits. As a small, nonprofit organization, we could not provide that benefit. As many of us know, affordable health care coverage is a major issue in this country, both personally and among small businesses.

The good news for J.D. is that he has been able to take a growing role in a family retail business. The long-range benefits to him could be significant. On the bad news side, he has been forced to work more hours than planned due to some illnesses among the management team. His ability to meet those obligations and maintain his high level of involvement with NCC has been strained for several months.

J.D. remains an enthused and active contributor to our club. His wise counsel is something I have come to rely on. Time permitting, we hope he is able to maintain his spot as chairman of our museum interior committee. However, he is giving up his job as museum worker, his seat on the board of directors, his co-chairmanship on our expansion and relocation committee, and, most likely his position as corresponding secretary.

I will wait to appoint a replacement for J.D. on our board of directors until after the results of this month's election for the three available seats. If you have any recommendations, please let me know.

We all owe J.D. a tremendous amount of thanks for all the contributions he has made to this club over the last several years. We could not have gotten by without him. If you feel so moved, please drop him a line care of the Museum, or hopefully, say something personally when you come to this year's Convention.

Speaking of the Convention, I hope by now you have sent in your registration packet for this year's

convention. If not, why not do it now? You're guaranteed to have one of the best times of the year.

In last month's issue, we didn't mention one of the absolute highlights of this year's convention, our banquet speaker, Willard Kolb. He is one of the most knowledgeable people on glass in the entire country. He also happens to be one of the nicest people you'll ever meet and has been a long-time supporter of the Cambridge club. Willard is a past NCC president and has been instrumental in getting us to the good position we are in now.

Willard also performs one of the most critical functions in the club by serving as the auctioneer for our Friday night mini-auction. As I mentioned in a column a couple months ago, the mini-auction this year, more than any recent year, is vital to our meeting our operating budget. This fund-raiser is handled with aplomb and humor by Willard.

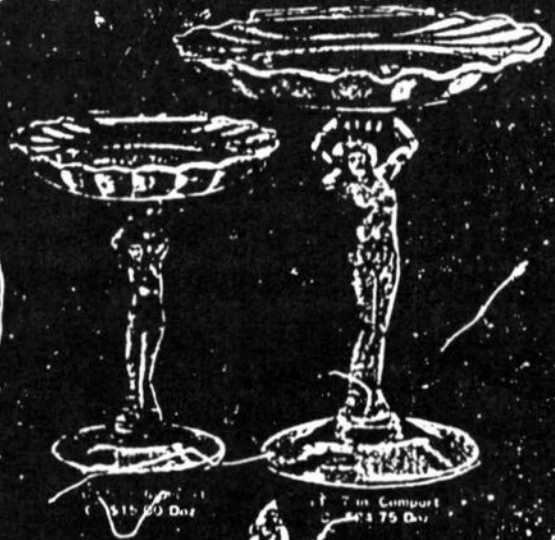
You are strongly encouraged to bring an item or items to be auctioned off this year. It could be glass (hopefully in good condition, not AS IS) or something fun that could have value. Last year, we had a number of special pieces, including a hand-sewn NCC sign and a graphic of a Flying Lady Bowl. I let the donors stay anonymous, but you know who you are and I say thank you!

Regarding last month's column, which was not underwritten by the Ohio tourism board despite some popular opinion, I have to comment on some of the reaction. I appreciate the very positive feedback from many of you and would like to salute in particular our members from Oregon who are coming to Convention this year and are setting up a tour similar to the one described in the column. That is great and I look forward to meeting you.

On the flip side, I must note the feedback I've heard that some Heisey collectors were offended by my description of them as "fanatics." You should be pleased to note that many of our NCC members who have heard this gladly will also refer to themselves as "fanatic." It is a term of endearment and should be worn proudly as a badge. Collecting is fun and

(Continued on page 15)

KRYSTOLSHELL



11 1/2 in. Sherbet
C \$7.50 Duz.

11 1/2 in. Sherbet
C \$7.50 Duz.

7 in. Compout
C \$4.75 Duz.



11 1/2 in. Sherbet
C \$7.50 Duz.

11 1/2 in. Sherbet
C \$7.50 Duz.

26 1/2 in. Fld. Candy Dish & Cover
C \$20.00 Duz.



11 1/2 in. Sherbet
C \$7.50 Duz.

11 1/2 in. Sherbet
C \$7.50 Duz.

19 10 in. 3 Towel Bowl
C \$33.75 Duz.

7 9 in. 3 Towel Bowl
C \$33.75 Duz.

** See Krystolshell article on page 5 regarding illustration above

Krystolshell

by Mark Nye

Shortly after the introduction of the Sea Shell line in 1935, someone at Cambridge got the idea that by producing Sea Shell in Crystal and giving it a different name, a new line could be created and sales increased. The name Krystolshell was devised and a "new" line brought out. Catalog pages dating to around 1937 included four pages that illustrated and priced Krystolshell. The available copy is not good and much of the pricing information is not legible. However, due to their historical significance, they are reprinted here. Three of the pages with the pricing information and stylized heading removed were later used for the 1940 catalog and they are also being reprinted this month or next, as space permits. The fourth page (which was actually the third page in the sequence) showing candleholders was extensively revised prior to its inclusion in the 1940 Cambridge catalog. It too is reprinted here in its original form and the 1940 page will be reprinted as space allows.

The page of candleholders illustrated items that were, with one exception, not from the Sea Shell line. The one exception being the Sea Shell 66 4-inch footed candlestick seen in the upper right-hand corner. Cambridge included the candleholders seen on this page in several different lines as well as selling them as individual items. This was a marketing method to increase sales.

Seven of the nine items pictured on the last of the four Krystolshell pages (in both the late 1930s catalog and the 1940 catalog) often cause problems for Cambridge collectors and especially Caprice collectors. (The No. 31 8-inch oval dish and the No. 30 9-inch 4-toed, 3-compt. relish at the bottom of the page are quite clearly from the Shell line.) These pieces, the first four rows of illustrations, have a pattern, most evident in the 3-footed plate seen at the top left corner, that is very similar to Caprice but nonetheless is different. There is no evidence Cambridge ever considered the seven items to be part of the Caprice line and the pieces are properly called Krystolshell. The first six items plus the candy box bottom appear to have been made from the

same mold; the different pieces created by hand-shaping the basic piece into different shapes while the glass was still hot.

Even though the Krystolshell covered candy box appears in the illustration to be identical to the Caprice covered candy, the bottom does have the Krystolshell pattern. The lid, however, is the same as used for the Caprice line.

The Krystolshell line did not survive the 1940s. When the 1949 Cambridge catalog was issued, the line was not included.



| | |
|--|---|
| <p>The DAZE Inc.</p> | <p>SPECIAL OFFER to NCC friends \$2.00 OFF the 1 year subscription price when on this form or copy of it.</p> |
| <p>The Original National monthly newspaper dedicated to the buying, selling and collecting of American made glassware china, and pottery from this century. We educate and inform you each month with feature articles by top notch writers, readers letters, club happenings, reproduction news, show reports and there are hundreds of dealers to help you fill in the missing pieces of your collection. "Keep up with what's happening" . . . Subscribe today!</p> | |
| <p>Name _____ Street _____ City _____ State _____ Zip _____ [] 1 year \$21.00 [] 2 years \$40.00 [] \$2.00 Single Copy Subscription Hot Line: 1-800-336-9927 Exp. Date _____ Card No. _____ Signature _____</p> | |
| <p>Orders to: The Daze, Inc., Box 57, Otisville, MI 48463 Please allow 30 days for your first issue - Canadian Subscribers, add \$1.00 per year and subscribe by charge card only! This Special Offer may not be combined with any other special offer. Offer Expires December 31, 1997</p> | |

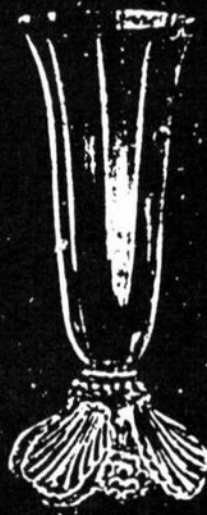
The Cambridge Glass Company



47 14 in. Cornucopia Vase
C-\$30.00 Doz.



49 10 in. Bell Vase
C-\$22.50 Doz.



48 10 in. Bell Vase
C-\$15.00 Doz.



35 4 in. 3 Toed Box & Cover
C-\$7.50 Doz.



36 4 in. 3 Toed Box & Cover
C-\$15.00 Doz.



34 4 in. 3 Toed Ash Tray
C-\$3.15 Doz.



46 7 in. Shell Flower Holder
C-\$22.50 Doz.



44 6 in. Flower Center
C-\$18.75 Doz.



32 4 in. 3 Toed Nap Dish
C-\$3.15 Doz.



38 4 in. 3 Toed Bun Bon
C-\$5.60 Doz.



37 4 in. 3 Toed Ash Tray
C-\$5.60 Doz.



33 4 in. 3 Toed Ash Tray
C-\$5.60 Doz.



43 10 in. Flower or Fruit Center
C-\$45.00 Doz.



42 8 in. Flower Center
C-\$40.00 Doz.

** See Krystalshell article on page 5 regarding illustration above

Cambridge, Ohio - - - U. S. A.



50 in. Dolphin Candlestick
C-518.75 Doz



66 in. Flower Block
C-53.60 Doz



73 in. Turtle Flower Block
C-515.00 Doz



66 in. 4 in. Ftd. Candlestick
C-58.75 Doz



67 in. 3 Holder Candlestick
C-22.50 Doz



73 in. Candlestick
w Prism
C-515.00 Doz



67 in. 5 in. 2 Holder Candlestick
C-510.00 Doz



66 in. 3 Holder Candlestick
C-563.15 Doz



1357 in. 7 in. 3 Holder Candlestick
C-540.00 Doz



647 in. 2 Holder Candlestick
C-520.00 Doz



1358 in. 7 in. 3 Holder Candlestick
w Prisms
C-282.50 Doz

** See Krystolshell article on page 5 regarding illustration above



The Cambridge Glass Company



117 7 in. Flat Bowl
C. \$7.00 D. 7



118 7 in. Flat Bowl
C. \$7.50 D. 7



119 7 in. Flat Bowl
C. \$7.50 D. 7



120 7 in. Flat Bowl
C. \$7.50 D. 7



121 7 in. Flat Crimped Bowl
C. \$7.50 D. 7



122 7 in. Flat Oval Bowl
C. \$7.50 D. 7



162 6 in. 3 Tier Candy Box & Cover
C. \$15.00 D. 7



118 7 in. Flat Bowl
C. \$7.50 D. 7



118 7 in. Flat Bowl
C. \$7.50 D. 7

** See Krystolshell article on page 5 regarding illustration above

Convention 1996 Update

by Mark Nye

Although the 1996 convention begins within the month, you still have time to make plans to attend. If you have not already done so and are planning to attend, fill out and mail your registration form today. Remember to register for all events you plan on attending, even those offered at No Charge. All registration forms must be received in Cambridge by June 12.

I hope everyone has made their motel reservations by now. If you are unable to obtain lodging of your choice in Cambridge, the Zanesville motels are an alternative. Motel lists were provided in the March, April and May issues of the *Crystal Ball*.

Included in this issue is the tentative Events Schedule. The final schedule will be in your Convention packet. I do not expect any major changes in the schedule between now and Convention. However, please use the schedule in your convention registration packet just in case a last minute change is necessary.

If you arrive Thursday after the registration desk closes, you can still attend the picnic that evening and Coffee with Cambridge the next morning. Registration lists and temporary name tags will be available at the functions.

At the time this is being written, the picnic site has not been finalized. At this time it appears it will not be at the park but instead at one of the motels. The site will be posted at the Civic Center, Best Western Motel and Deer Creek Motel, as well as in your registration packet.

In addition to the group Fenton Tour, it is possible to tour the Boyd and Mosser factories as an individual activity. Located in Cambridge, both companies manufacture glassware seen in gift shops. Using some old Cambridge molds, as well as many of their own design, each company takes great pride in their work and for the most part sign their products.

Please bring donations for the mini-auction. Donated items need not be museum-quality pieces, just something with which we can raise money for the Museum. Remember the mini-auction is a fun auction, selling everything from a good Cambridge piece to empty bottles, and is not a scaled-down version of the All Cambridge Auction held in March. All items auctioned are donated and all proceeds go to the Museum.

If possible, plan on attending the Former Workers Reunion Sunday afternoon. It is an opportunity to meet some of the people who made the glass we collect and get some first-hand history.

See you in Cambridge.



**Antiques • Crafts
Collectibles**
100 Booths • Dealers Welcome
"Near I-70/I-77 Interchange"
637 Wheeling Ave.
In Downtown Historic District
Cambridge, OH 43725
614/432-4369
Open Daily 10-6, Sunday 12-5

(KOLB - Continued from page 1)

accomplish everything they wish to accomplish. Fortunately his wife, Norma, and his three grown children seem to understand his interests, although at times they question his sanity.

Willard says, "I give credit to Dr. James S. Measell for my interest in glass companies' histories and the collection of glass company memorabilia from a presentation he made at our annual banquet in 1982 entitled 'There's More to Glass Collecting Than Just Collecting Glass.' "

NATIONAL CAMBRIDGE COLLECTORS, INC.
23rd ANNUAL CONVENTION
JUNE 1996
TENTATIVE EVENT SCHEDULE

THURSDAY, JUNE 20

| | | |
|-----------|-------------------------------------|---|
| 9:00 a.m. | Registration Desk Opens | Pritchard Laughlin Civic Center |
| 9:30 a.m. | Fenton Factory Tour Departs | Pritchard Laughlin Civic Center |
| 9:30 a.m. | Snap Identification/Sorting Session | NCC Museum Storage Building |
| 3:00 p.m. | Orientation Session - First Timers | Conference Room - Pritchard Laughlin Civic Center |
| 7:00 p.m. | Picnic | Site to be announced |

FRIDAY, JUNE 21

| | | |
|-----------|--|---|
| 9:00 a.m. | Coffee With Cambridge | National Cambridge Collectors, Inc. Museum |
| 9:00 a.m. | Registration Desk Opens | Pritchard Laughlin Civic Center |
| 1:30 p.m. | Cambridge & The 1940s - Mark Nye | Conference Room - Pritchard Laughlin Civic Center |
| 2:30 p.m. | Film - Crystal Lady | Conference Room - Pritchard Laughlin Civic Center |
| 4:30 p.m. | Antique Show Opens | Exhibit Hall - Pritchard Laughlin Civic Center |
| 7:30 p.m. | Convention Chairman's Reception - Cash Bar | Galleria - Pritchard Laughlin Civic Center |
| 8:00 p.m. | Friday Night Supper | Galleria - Pritchard Laughlin Civic Center |
| 9:00 p.m. | Mini-Auction | Galleria - Pritchard Laughlin Civic Center |

SATURDAY, JUNE 22

| | | |
|------------|---------------------------------------|---|
| 7:00 a.m. | Flea Market Opens | Beech Grove Family Development Center |
| 11:00 a.m. | Antique Show Opens | Exhibit Hall - Pritchard Laughlin Civic Center |
| 1:00 p.m. | Rock Crystal Engravings - 1940s | Conf. Room - Pritchard Laughlin Civic Center |
| 3:00 p.m. | Glass Identification - Lynn Welker | Conference Room - Pritchard Laughlin Civic Center |
| 4:00 p.m. | Bring & Brag - Lynn Welker | Conference Room - Pritchard Laughlin Civic Center |
| 6:30 p.m. | President's Reception - Cash Bar | Galleria - Pritchard Laughlin Civic Center |
| 7:00 p.m. | Annual Banquet Speaker - Willard Kolb | Galleria - Pritchard Laughlin Civic Center |

SUNDAY, JUNE 23

| | | |
|------------|-------------------------------------|--|
| 8:30 a.m. | Buffet Breakfast | Galleria - Pritchard Laughlin Civic Center |
| 9:30 a.m. | Annual Meeting | Galleria - Pritchard Laughlin Civic Center |
| 11:00 a.m. | Antique Show Opens | Exhibit Hall - Pritchard Laughlin Civic Center |
| 1:30 p.m. | Cambridge Glass Co. Workers Reunion | Pritchard Laughlin Civic Center |

**ASK NCC:
LETTERS
FROM
MEMBERS AND
FRIENDS**

LETTER TO THE EDITOR:

I just received the *Crystal Ball* here in California, and the President's Message in regard to a glass tour was indeed informative. As a former resident of Cambridge and the great state of Ohio, I would like to add to that tour some other high points I am familiar with. Ohio is indeed a lovely state and there are many pleasant surprises for those who can spend some time there either before or after the Convention.

Dayton, Ohio, is home to the famous Wright-Patterson Air Base and the Museum. The Museum is well worth the time and plan to spend a day. They have a cafeteria and a shop. The planes and displays will take you back in time and project you to the present and future. My uncle was a member of the World War II Flying Skulls Squadron and their memorial is located outside in the front. He is a frequent visitor there. In Columbus, the capital, there is much to see including German Village which was restored. Many shops and restaurants including famous Schmidt's, famous for their sausage and pastries. The buffet is excellent. They do a brisk business and are very popular.

Cumberland is known for the "Wilds," a wildlife habitat including many exotic species. They just introduced the Trumpeter Swans to the state once again. They have everything including white rhino, giraffe, zebra, red-crested cranes from Japan, etc. They are at 14000 International Road. Off to the side of Zanesville, home of the famous "Y" bridge, is Dresden, Ohio, home of the famous Longaberger handmade baskets and their factories. They have a wonderful tour and the town of Dresden is a

pleasant surprise with the largest basket in the world displayed and many shops and good restaurants.

Up north is Middlefield, home of the famous Middlefield Cheese House and the annual cheese festival. It is wonderful cheese and Amish country as well. In Akron it is famous Quaker Square and the unusual Hilton Hotel site of a former mill. They kept portions of the silos and the rooms have the curved area of those. Huge gears from the mill are displayed in downstairs corridors and areas. A very modern hotel. Schumacher's restaurant is a must. Large portions and wonderful and many shops are in the same area. In Chardon, Ohio, it is Fowler's Milling Co., pancake mixes, maple syrup, cake and muffin and cookie mixes, scratch baking, spreads, spices, jams, pickles, etc. No preservatives. A really nice discovery Fowler's Milling Co.

So that those of you coming to the Cambridge glass convention might want to expand your visit and get to know our great state. I'm sure if you do, you will come again and again. And as you know, in a future when you come, there will be a new Cambridge glass museum and I know it will be very exciting and the most illustrious glass museum in the nation. We can all be a part of that. I bid you "good journey" and a "great 1996 Cambridge glass convention."


Sincerely,
Bonnie J. Quaintance

Thank you for sharing some other interesting Ohio places with us. Ohio has a lot to offer besides wonderful glass and antiques. Another interesting place in this part of the state is Lehman's Hardware store in Kidron which offers something for everyone. It is a an unusual experience and a surprise. There are so many great trips that can be made from the Cambridge area and combining that with Convention is ideal.

Lorraine

Bogart's
Bed & Breakfast

62 W. Main Street, New Concord
New Concord lodging in 1830 Federal
Style home, decorated with
antiques throughout.



Bogart's Antiques
7527 E. Pike, Norwich OH
Quality Antiques Bought & Sold

OWNERS: Jack & Sharon Bogart
872-3514 or 826-7439

NATIONAL STUDY GROUP REPORTS

Study Group # 16 Elegant Glass Collectors

The February monthly meeting was held at the Wheaton Museum at Wheaton Village, Millville, NJ. Eight members were present: Bud Walker, Anna Walker, Pam Earussi, Bill Earussi, Windsor Tracy, Laura Tracy, Don Stevens, Bonnie Stevens.

We toured the antique show held in the Wheaton Museum of Glass. Displayed in the cases is the lovely Walker Collection of Cambridge glass. The antique show was held right in the Museum. Seen were an unusual Crystal Cleo syrup, a Rosepoint cruet, unusual candleholders in Alpine, a most unusual Amber Everglades bowl, along with other Cambridge pieces. Someone took home an Amber tall basket, larger than what is normally seen, and a Betty Amber vase. After touring the show, we adjourned to the restaurant, enjoying a delicious lunch. We saw pictures of the Stevens' collection, and had an impromptu Show and Tell. Plans were made to meet at Shupps' Grove on April 28th.

-Submitted by Pam Earussi



Study Group #13 The Miami Valley (Ohio) Study Club

The monthly meeting of the Miami Valley Study Club was held at the Huber Heights Library on Tuesday, April 9, 1996. Fourteen members were present: Helen and John Wilt, Dave and Sue Rankin, Frank and Vicki Wollenhaupt, George and Beverly Stamper, Ron and Norma Hufford, Ken and Judy Rhoads, Mac and Georgia Otten.

Items discussed during our business meeting were the receipt of the board of directors' meeting minutes, the May meeting's program on Caprice, emphasizing colors, the moving of the Huber

Heights Library (and thus our meeting place) to a new location this fall, and election of officers. Our new officers are:

President - George Stamper
Vice President - Ron Hufford
Secretary - Dave Rankin
Treasurer - Mac Otten

The program was presented by Ron and Norma Hufford, who have visited the Oglebay Museum and have taken glass blowing classes there. They narrated a videotape they had made showing some of the fine glass being displayed there.

Members displayed a variety of items for Show and Tell: #3400/62 Carmen 8 1/2" salad plate; #3400/103 Royal Blue 6 1/2" globe vase; #279 Martha 2 pc. mayo, etched Chantilly; #3500 Carmen 10 oz. footed tumbler; #3400 salt and pepper with sterling lids, etched Chantilly; #797 8" vase, etched Wildflower; #3143/30 5" footed ivy ball, gyro optic, Mocha with Crystal foot; Chelsea comport; #2131 tall sherbet etched Wildflower w/gold rim; Seashell #11 Coral 7" footed comport; Seashell #21 Coral 6" box and cover.

-Submitted by Judy Rhoads, Secretary



Study Group #16 Elegant Glass Collectors

The monthly meeting was held at Shupp's Grove, Adamstown, PA, on April 28, 1996. Eight members were present: Bud Walker, Anna Walker, Steve Taylor, Amy Weinstein, Bill Earussi, and Pam Earussi. Also present were guests Brad and Denise Bernstein of Wilmington, DE.

We toured the grounds of Shupp's Grove, and met for lunch at the refreshment stand. Among the

(Continued on page 14)

Quarterly Meeting Minutes

Friday Evening, March 1, 1996

Rick Jones called the Quarterly Meeting to order. The meeting was held in the auditorium of the Pritchard Laughlin Civic Center. Rick informed the membership that the budget for 1996 was completed. This budget has a shortfall of about six thousand dollars, which was no cause for alarm as more than six thousand dollars is raised from our mini-auction and other non-calculated income. As long as membership remains at present levels, our budget should be balanced.

Rick asked those in attendance to come up with ideas that could help in increasing our membership. Without new members we cannot achieve our long-range goals. The board is open to any suggestions that will help us grow. One suggestion under consideration for possible change was a change in time for our June meeting. After due consideration, it was decided the 1996 meeting will be held Sunday morning.

Rick reported that after lengthy discussion the board has decided that the time has come to have the 40s catalog corrected. Due to the poor quality of the printing, many of the pages need to be replaced. After much discussion with the printer, it was decided to have another printing company do the work. If all goes as planned, the 40s catalog with the bad pages replaced will go on sale at our annual convention.

President Jones wished all those in attendance good luck in tomorrow's auction. He then turned the membership over to Lynn Welker, who did an excellent job with Show and Tell. This was followed by a preview of the glass that was to be sold the following day. There was something there for everyone.

Bud Walker
Secretary

(STUDY GROUPS - Continued from page 13)

things displayed for Show and Tell were: a carved silver/chrome basketholder with knobbed feet which held a two-part Emerald Green relish dish with flower design etch, a Cobalt/Royal Blue Nautilus cream and sugar, a Milk glass Nautilus footed shell dish, an individual Moderne/Cadet pink cream and sugar, two Azurite bowls, and a cruet with no stopper which will become a flowerholder in someone's kitchen. Even though items may not be perfect, they can be well-loved for their design and function. This was a very busy weekend, with the Harrisburg Show at the same time. Other commitments kept people from attending. Our next meeting will be at the Cambridge Convention in June.

-Submitted by Pam Earussi

1996 SIXTEENTH ANNUAL *F*ostoria Glass *S*ociety CONVENTION SHOW & SALE

"Fostoria: By Candlelight"
DEL F NORONA MUSEUM

Eighth Street & Jefferson Avenue
Moundsville, West Virginia

| | |
|---|----------------------------------|
| Friday, June 7, 1996 | Premiere Admission \$8.00 |
| Premiere Show and Sale | 6:00 P.M. - 9:00 P.M. |
| Saturday, June 8, 1996 | General Admission \$3.00 |
| Show and Sale | 11:00 A.M. - 5:00 P.M. |
| Glass Auction | 6:00 P.M. |
| Marshall County Fairgrounds 12th Street, Moundsville, W. Va. | |
| Sunday, June 9, 1996 | General Admission \$3.00 |
| Flea Market - Free Admission | 10:00 A.M. - 2:00 P.M. |
| Show and Sale | 11:00 A.M. - 4:00 P.M. |

Moundsville Chapter Flea Market June 9, 1996

Set-Up 8:00 A.M. \$15 Per Couple Fee
Early Buyer Fee \$15 Per Couple
Free Admission at 10:00 A.M.
Contact Clara Robinson - (304) 845-3897



For More Information Contact:
Fostoria Glass Society of America, Inc.
P.O. Box 826, Moundsville, W. Va. 26041
Call (304) 845-9188 or (304) 737-2006



**TIFFIN GLASS COLLECTORS CLUB
11th ANNUAL SHOW AND SALE**

SCHOOL OF OPPORTUNITY

780 E. Seneca Co. Rd. #20, Tiffin, Ohio

Friday, June 28, 1996 - 7:30 PM - 9:30 PM
Premier Admission \$5.00

Saturday, June 29, 1996 - 10 AM - 5 PM
Sunday, June 30, 1996 - 11 AM - 4 PM
General Admission \$2.00 (Good Both Days)

BANQUET

SATURDAY, JUNE 29, 1996
QUALITY INN
US 224 & St. Rt. 53
Tiffin, Ohio

GUEST SPEAKER:

Neila Bredehoft, Noted glass researcher and author

Cash Bar 6:30 PM Dinner 7:00 PM

Please send check for \$18.00 for Dinner to Tiffin Glass Collectors,
c/o Bill Reyer, P.O. Box 554, Tiffin, Ohio 44883
Reservations Required Call 419-447-4452

Tiffin Elegance in Glass

WE CLEAN CLOUDY GLASS!

**** SATISFACTION GUARANTEED ****

YES, IT IS TRUE THAT WE REALLY CAN RESTORE THE INTERIOR OF YOUR CRUET, VASE, DECANTER AND MOST OTHER INTERNALLY ETCHED ITEMS BACK TO NEAR ORIGINAL CONDITION!

WE DO NOT OIL, WAX OR COVER UP THE SICKNESS IN ANY WAY! WE ACTUALLY REMOVE IT.

NO ITEMS ARE TOO SICK TO CLEAN! IF WE CANNOT CLEAN YOUR ITEM TO MEET YOUR SATISFACTION, THE CLEANING IS FREE!

WE ARE SO CONFIDENT IN OUR SERVICE THAT WE ASK THAT YOU SEND NO MONEY. WHEN WE RETURN YOUR ITEM A BILL WILL BE ENCLOSED FOR THE POSTAGE & CLEANING. IF YOU ARE HAPPY, PLEASE SEND PAYMENT; IF NOT, RETURN THE BILL MARKED "NOT SATISFIED".

PLEASE ALLOW 6-8 WEEKS FOR REDELIVERY OF MOST ITEMS. ALL GLASS IS HANDLED AND CLEANED AT YOUR RISK. SOME VERY CLOUDY ITEMS MAY TAKE SEVERAL ADDITIONAL WEEKS.

| | | | |
|----------------------|---------|----------------------|------------|
| CRUET | \$20.00 | COCKTAIL SHAKER | \$30.00 |
| COLOGNE | \$20.00 | SALT SHAKER (SINGLE) | \$15.00 |
| WATER BOTTLE | \$30.00 | SALT SHAKER (PAIR) | \$25.00 |
| DECANTER | \$30.00 | CRUSHED FRUIT JAR | \$30.00 |
| VASES (UNDER 12 IN.) | \$25.00 | LAVENDER JAR | \$20-30.00 |

ALL OTHERS WRITE FOR QUOTE

SHIP TO: CARLISLE & ASSOCIATES
28220 LAMONG ROAD, DEPT. C
SHERIDAN IN 46069
(317) 758-5767 AFTER 6:00 P.M.

(PRESIDENT'S MESSAGE - Continued from page 3)

many of us can build strong allegiances to our organizations. I submit myself as Exhibit #1. However, many of our members collect patterns from multiple glass companies. They describe themselves as *fanatic* about all of them. So what.

If I offended anyone, I'm sorry. But, get real. This is not life or death here. It's fun and fulfilling. There is no desire to create rivalries among glass clubs. There are enough clubs that have huge factions among themselves that have led to split-ups of the club. We at NCC are not immune to this but we are in a strong position today and are working hard to meet the many challenges in front of us. We are healthy and poised for a bright future. More than anything, let's not forget that this should be fun!

I began this column by talking about J.D.'s departure. We are sure that things will be different during the transition. We have scrambled a bit to make sure we have staffing to keep our museum open during our published hours. I know that a few days were missed and I'm sorry if this inconvenienced anyone. However, we seem to be in good shape thanks to some quick scrambling in Cambridge, led notably by board member Cindy Arent. Thanks Cindy for your quick action and for caring.

Some members have experienced delays in receiving book orders or replies to correspondence. As I write this in mid-May, we are trying to construct new systems so that we can minimize these situations. If you experience problems, please give me a call. We will do our best to get you a rapid answer. I thank you in advance for your patience during this transition.

In closing, I once again invite you to our 1996 Annual Convention. We are trying to arrange a special reception for first-time attendees Thursday night at 6 p.m. just before the picnic. It is likely to be at the Best Western, but I can't confirm anything at this time. If we are able to pull this off, we will try to have an announcement in your convention registration packet or we'll just "spread the word" the old-fashioned way.

If you are coming to the Convention, we wish you a safe trip and good weather. See you there!

Rick



20th ANNUAL
NIGCS CONVENTION

"Our Quest for an Imperial Museum"

MAY 31, JUNE 1 and 2, 1996
ST. CLAIRSVILLE, OHIO

Belmont Technical College
(Four miles west of Hampton Inn - I-70 Exit 213)

GLASS SHOW AND SALE

Saturday, June 1 • 1-5 p.m. Sunday, June 2 • 11-3 p.m.
Admission: \$2.00 Donation

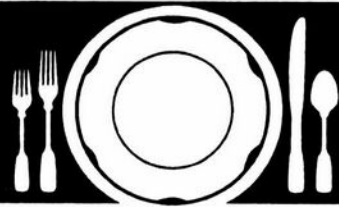
FREE PUBLIC SEMINARS

Saturday, June 1 • 10-11:30 a.m. Sunday, June 2 • 10-11 a.m.
Question & Answer Session **"Moulds and Mould Making"**
With Former **John and Tom Weishar**
Imperial Employees **Island Mould & Machine Co.**

GLASS ID • Sunday, June 2 • 12:30-2 p.m.

Open to the Public • **BANQUET** • Hampton Inn/Undo's West
Saturday, June 1 at 6:30 p.m. - Must have reservations
Speakers: George Fogg and Frank Maloney
"Authors, Lecturers and Collectors"

National Imperial Glass Collectors' Society, Inc.
P.O. BOX 534 - BELLAIRE, OHIO 43906
(410) 995-1254 • (216) 442-0279 • (703) 556-4301



Our Stems

Don't Have Thorns

As the world's largest supplier
of discontinued china, crystal
and flatware, Replacements, Ltd.
has 54,000 different patterns
and 2.1 million pieces.

We have Rosepoint, Rambling Rose,
Midnight Rose, Rosebud,
Rosechintz. . . .

And these stems don't have thorns.

REPLACEMENTS, LTD.

1089 Knox Road • PO Box 26029
Greensboro, NC 27420 • Dept CB

Everyday 8am-10pm
Call 1-800-562-4462

• TIFFIN • DUNCAN MILLER • FENTON • HEISEY •

Duncan-Miller
Glass Show & Sale

Sponsored By

The National Duncan Glass Society

July 27 & 28, —11:00 A.M. to 5:00 P.M.

Alpine Club

735 Jefferson Avenue, Washington, PA
I-70 Exit 6 1/2 Mile

Admission \$3.00

\$.50 Discount With This Card/Ad

Auction Saturday, July 27, 1996—6:30 P.M.

Thistlecrest Auction House, Rt. 40 E.

For Information Call:
(412) 225-9950

• NEW MARTINSVILLE • PADEN CITY • MORGANTOWN •

CAMBRIDGE • FRY • FOSTORIA

IMPERIAL • OLD PRESSED GLASS



ISAACS ANTIQUES

We are taking this opportunity to thank you
for your past patronage.

We invite you to attend our
retirement sale to liquidate the entire inventory.

Thanks to All of You,
Doris and Roy

ISAACS ANTIQUES



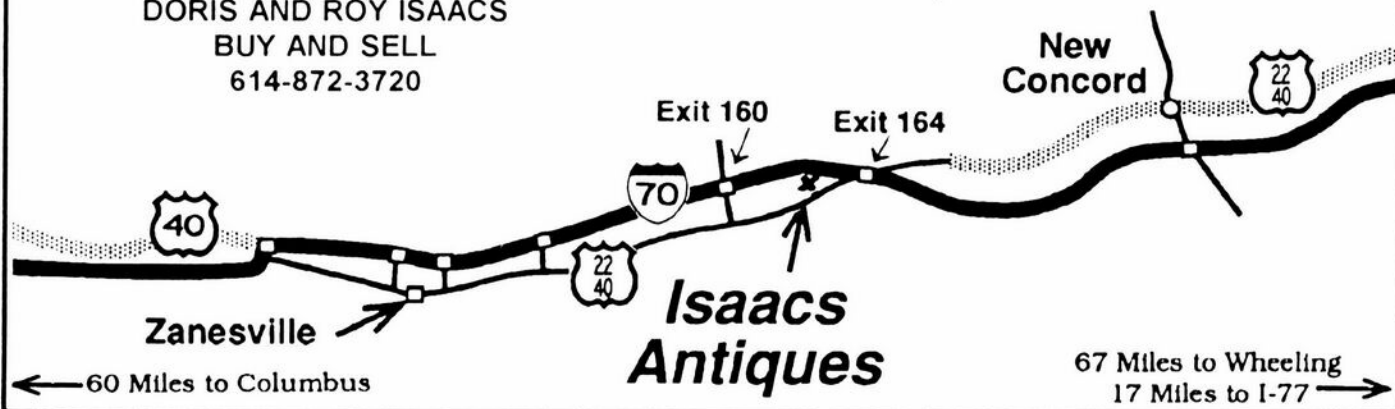
7525 East Pike
Norwich, Ohio 43767
614-872-3720

In East Pike Antique Complex - Rt. 40,
One Mile West of I-70 Norwich Exit #164

Hours 10 - 5:30 Mon. - Sat.
12 - 5:30 Sun.
Open Year Round

WE FEATURE GLASSWARE OF: CAMBRIDGE,
HEISEY, FENTON & FOSTORIA
Plus Art Pottery & a General Line of Antiques

DORIS AND ROY ISAACS
BUY AND SELL
614-872-3720



~ GLASS ~ MARKETPLACE

Classifieds

WANTED: Tally Ho flat punch cups in crystal, any number; one #3500 Gadroon individual creamer, Diane etch; ebony #1228 9" pillow vase, no decoration. **Michael Krumme, P.O. Box 5542, Santa Monica, CA 90409-5542 (213) 936-4214.**

WANTED: Two Monkeys Lamp - Crown Tuscan Scottie or Pouter Pigeon - Also looking for #2800/234 Crystal Community Wash Basin. **If you have or find, call collect 1-609-965-2413.**

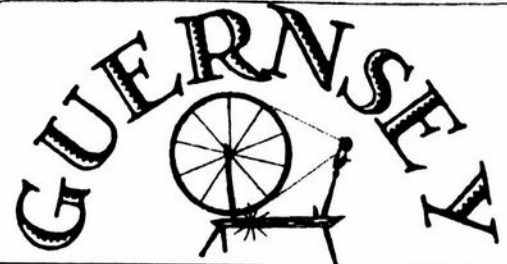
WANTED: Cambridge Arms, Epergnes plus Accessory Pieces. Vases #2355 any size and bobeches #327. **Jody Stacken, 3022 Quail Creek Dr., Topeka, KS 66614. (913) 272-7118.**

WANTED: Hard to find Rose Point, Rose Point #3106 stems, Nude stems, and novelty items. Write price and description. **Nancy and Jim Finley, 711 West Broadway, Sedalia, MO 65301. Phone (816) 826-5032 or 827-0101.**

WANTED: HUNTING FOR HO. Tally-Ho; cocktail shakers, jugs, candlesticks and vases in colors. Please call me if you have any to sell. Thanks! **Cindy Jones (914) 631-1656.**

WANTED: Cambridge Bridge Hounds (Pencil Dogs) - Interested in all colors (**except** Amber, Amethyst, Crown Tuscan, Forest Green, Emerald, Ebony, Mocha, Smoke and Tahoe Blue). **Contact Lorraine Weinman at (614) 594-3305 or bring them to Convention and contact Lorraine, Cindy Arent or Rich Bennett.**

FOR SALE: Cambridge "Euclid" on #1017 stem: 4 goblets, 6 ice teas, 5 champagnes @ \$25 each; 6 plates @ \$15 each or \$400 for all pieces plus shipping. Cambridge "Adonis" on #3500: 10 goblets @ \$45 each; 8 champagnes @ \$38 each; 9 seafood icers and liners @ \$68 each; 3 8-inch plates @ \$22 each. Visa. Mastercard. Shipping added. **Milbra's Crystal, P.O. Box 363, Rio Vista, TX 76093. (817) 645-6066.**

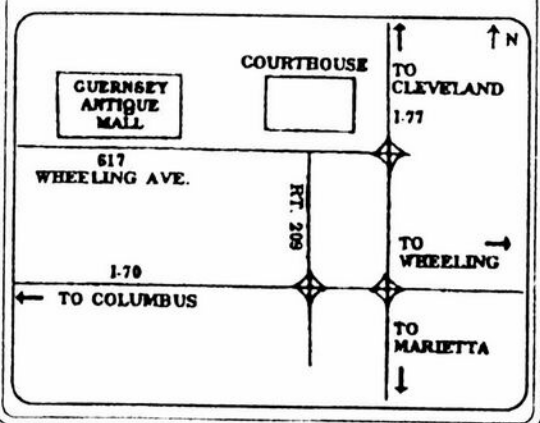


ANTIQUE MALL

**617 Wheeling Ave.
Cambridge, Ohio 43725
614-432-2570**



**Quality Dealers
General Line Of Antiques
Open Mon. Thru Sat. 10:00 - 5:00**



DEALERS



DIRECTORY

NOTE: When writing to the dealers listed here, please enclose a SASE!

| | | |
|--|--|---|
| <p>DAUGHERTY'S ANTIQUES Jerry and Shirley</p> <p>Antiques and Collectibles * Mostly Glass</p> <p>Shows & Mail Orders 2515 Cheshire No. 402-423-7426 Evenings Lincoln NE 68512</p> | <p>"HAPPINESS IS" Buddy and Kathy Stultz</p> <p>3106 Warren Court, Glen Allen, VA 23060 804-672-8102</p> <p>Specializing in American Made Glass We Buy & Sell, Shows & Mail Order</p> | <p>THE MUTED SWAN ANTIQUES</p> <p>5486 Peachtree Rd. Chamblee, GA 30341 Heart of Chamblee Antique Row Specializing in Cambridge, Heisey and Fostoria</p> <p>Bill & Pat Miller 404-451-7620</p> |
| <p>Milbra's Crystal Buy & Sell</p> <p>Replacement and Matching Specializing in: Cambridge</p> <p>Milbra Long (817) 645-6066 Fostoria Emily Seate (817) 294-9837 Heisey PO Box 363, Rio Vista, TX 76093 and others</p> | <p>BUY-SELL (513) 390-3617</p> <p>Taste of Honey Glassware - Collectibles</p> <p>Clarke West 4888 Brannan Dr. E. Carole West Springfield, OH 45502</p> | <p>ARMORY ANTIQUES</p> <p>168 West Main Street Plain City, OH 43064</p> <p>QUALITY THINGS Cambridge, Heisey, China, Silver, Furniture Mon-Sat 10-5 VISA/MC 614-873-4890</p> |
| <p>THE GLASS URN</p> <p>456 West Main Street, Suite G Mesa, AZ 85201 602-833-2702</p> <p>Mail Order Shows Open Shop</p> <p>CAMBRIDGE, FOSTORIA, HEISEY, ETC.</p> | <p>ANTIQUES ON THE MALL SPECIALIZING IN CAMBRIDGE GLASS</p> <p>Bogart's - Bldg. #3 - Norwich, OH</p> <p>Virginia Bennett 614-432-4483 64183 Warne Drive, Cambridge, OH 43725</p> | <p>GATEWAY ANTIQUE MALL, INC. JUST NW OF MINNEAPOLIS-ST. PAUL, MN Next to Super 8 in Rogers, MN (I-94/101 Intersection)</p> <p>85 Dealers 7 Days, 10-6 612-428-8286 ELAINE STORCK, DIRECTOR</p> |
| <p>ETTELMAN'S DISCONTINUED CHINA & CRYSTAL Cambridge a Specialty</p> <p>PO Box 6491-CB Corpus Christi TX 78466 Phone 512-888-8391 Include S.A.S.E</p> | <p>D & D ANTIQUES</p> <p>Columbus, Ohio</p> <p>Dick Sifko SHOWS ONLY</p> | <p>RONI SIONAKIDES</p> <p>6565 W. Herbison Rd. DeWitt, MI 48820 517-669-5981</p> <p>Fostoria, Tiffin, Duncan, Cambridge</p> |
| <p>THE GLASS CUPBOARD</p> <p>P.O. Box 652 West End, North Carolina 27376</p> <p>Marcia Ellis Cambridge, Duncan, Heisey 910-673-2884 Shows, Mail Order</p> | <p>JUDY'S ANTIQUES Judy Bennett</p> <p>422 S. Ninth Street (Corner of Jefferson) Cambridge, Ohio 43725</p> <p>BUYING Ph. 614-432-5855 SELLING</p> <p>CAMBRIDGE GLASS MY SPECIALTY</p> | <p>YOU CAN ADVERTISE YOUR ANTIQUESHOP HERE!</p> |
| <p>FINDER'S ANTIQUE HOUSE New Home of Elegant Glassware</p> <p>1169 Piney Forest Rd. Danville, VA 24540 (804) 836-6782</p> <p>Cambridge-Heisey-Duncan-Fostoria</p> | <p>GREEN ACRES FARM</p> <p>2678 Hazelton Etna Rd., Pataskalia, OH 43062 (State Route 310 North)</p> <p>Sat & Sun 1-7 PM 614-927-1882 Antiques, Crystal Glass and Collectibles</p> | <p>CRYSTAL LADY</p> <p>1817 Vinton St., Omaha, NE 68108 Joann D. Hagerty</p> <p>Bus. 402-341-0643 Res. 402-391-6730 Specializing in Elegant Glass & Collectibles</p> |
| <p>ASK</p> <p>Specializing in Cambridge. Wide variety.</p> <p>Booth #14 in the Antique Mall of Boswell 90 miles south Chicago, right on U.S. 41. 7 days a week 10-5, except Sun. 12-5 (317) 869-5525</p> | <p>FLORENCE SOLITO</p> <p>54 Old Stafford Rd., Tolland CT 06084</p> <p>Stock All Elegant Glassware Mail Order Since 1978 Send Wlists</p> <p>203-872-3294 Satisfaction Guaranteed</p> | <p>YOU CAN ADVERTISE YOUR ANTIQUESHOP HERE!</p> |
| <p>MICHAEL KRUMME Cambridge*Heisey*Fostoria*Duncan Miller*Paden City New Martinsville*Fenton*Tiffin*Imperial*Morgantown</p> <p>I search - Send detailed want list - all kept on file PO Box 5542 Santa Monica, CA 90409</p> | <p>YOU CAN ADVERTISE YOUR ANTIQUESHOP HERE!</p> | <p>MARGARET LANE ANTIQUES</p> <p>2 E. Main St., New Concord, OH 43762 Lynn Welker 614-826-7414</p> <p>Cambridge Glass Matching Service Hours Mon-Fri 10-12 AM, 1-5 PM or by Appointment</p> |
| <p>GLASS RESTORATION</p> <p>BRILLIANT DON & LYNNE CRYSTAL WORMLAND ELEGANT MT. CLEMENS, MICH DEPRESSION 810-468-3519</p> | <p>ALADDIN LAMP BOOKS Free List</p> <p>Figurine Lamps Wanted Bill & Treva Courter</p> <p>3935 Kelley Rd. Kevil, KY 42053 Phone/FAX 502-488-2116</p> | <p>DEXTER CITY ANTIQUE MALL</p> <p>P. O. Box 70, Dexter City, Ohio 45727 (614) 783-5921</p> <p>Located on Ohio St. Rt 821 Between Exits 16 & 25 off I-77 Just 30 min. South of Cambridge, Ohio</p> |

ONCE AGAIN
THE

DEXTER CITY ANTIQUE MALL

INVITES YOU TO ATTEND AN

OPEN HOUSE

IN HONOR OF ALL

CAMBRIDGE GLASS

LOVERS OF THE WORLD

THURSDAY - JUNE 20TH.
9:AM - 6:PM

EXTENDED HOURS.

WE HAVE ASKED
THAT OUR
DEALERS BE
PRESENT TO
ENHANCE YOUR
SHOPPING
PLEASURE.



THOUSANDS OF
GLASSWARE
ITEMS.

REFRESHMENTS SERVED.

THE DEXTER CITY ANTIQUE MALL IS ONLY
30 MINUTES FROM CAMBRIDGE, OHIO.
LOCATED ON OHIO ST., RT. 821 - BETWEEN
EXITS 16 & 25 OFF I-77.

National Cambridge Collectors Inc
PO Box 416
Cambridge OH 43725-0416

FIRST CLASS MAIL
U.S. POSTAGE
PAID
PERMIT NO. 1
CAMBRIDGE, OH

FIRST CLASS MAIL

Membership Renewal Notice

If the date on your address label is 6-96,
this is your LAST ISSUE of the Crystal Ball.

Please take a moment and renew now. Thank you!
