



Cambridge Crystal Ball

Published monthly by National Cambridge Collectors, Inc.
to encourage and report the discovery of the elegant and boundless product of the
Cambridge Glass Company of Cambridge, Ohio

Issue No. 282

October 1996

1996 August Quarterly Meeting

by Cindy Arent

The National Cambridge Collectors' August Quarterly Meeting was held Saturday, August 24 at the non-glass storage building.

In the early morning, several members worked on collating the 1940 catalog reprint pages. Anyone interested in donating time to help with this project should write a note to Charles Upton at the club address.

At noon everyone enjoyed a delicious covered-dish picnic. Following lunch, President Rick Jones called the meeting to order and various committee reports were given.

Acquisitions Chairman Joe Andrejcek reported on both donated and purchased glass that has been acquired this summer for the museum.

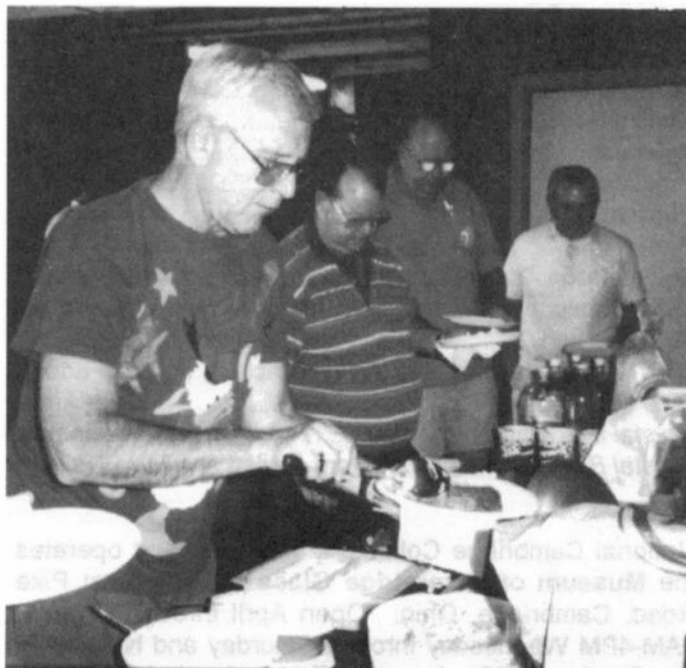
Jeff Ross, membership chairman, stated that we currently have 1377 members. The new multiyear memberships have become a popular method to renew memberships and we have signed up several new members this summer.

Program Chairman Bill Hagerty reported that the

November Quarterly Meeting will be held Saturday, November 2, at the Cambridge Country Club. (The dates and registration information can be found on Page 20 of this issue.)

Rick Jones reported that the club table at the Great Northeast Glass Show did very well. Tarzan Deel and Lydia McNeil set up a beautiful display of

(Continued on page 7)



Lining up for lunch at the Quarterly Meeting picnic are: Joe Andrejcek, Bill Hagerty, Bud Walker, and Willard Kolb.

Inside This Issue:

How It All Began - Part III (Near Cut)

August Quarterly Meeting Minutes

Building Fund

November Quarterly Meeting Registration

Cambridge Crystal Ball

Official publication of National Cambridge Collectors Inc., a non-profit corporation with tax exempt status. Published once a month for the benefit of its members. All rights reserved; reproduction in whole or in part without written permission of NCC and the author is prohibited.

Membership is available for individual members at \$17.00 per year and an additional \$3.00 for associate members (12 years of age and older, residing in the same household). Of the master member dues, \$12.00 is credited to a one-year subscription to the *Crystal Ball*. All members have voting rights, but only one *Crystal Ball* per household. **Effective 1/1/96, multi-year memberships are available: 2 years for \$33.00, 3 years for \$49.00.** Back issues of the *Crystal Ball* are available for \$1.00 each or 12 issues for \$10.00. Complete sets for \$79.00.

1996-1997

OFFICERS AND COMMITTEE CHAIRPERSONS

President	Richard D. Jones
Vice President	Mark A. Nye
Secretary	Bud Walker
Treasurer	Charles Upton
Sergeant-at-Arms	Tarzan Deel
Acquisitions	Joe Andrejcek
Budget & Finance	Dennis Snyder
By-Laws	Bud Walker
Corresponding Secretary	Charles Upton
Long-Range Planning	Tarzan Deel
Membership	Jeff Ross
Museum Expansion/Relocation	Willard Kolb
Museum Facilities	Carl Beynon, Joe Miller
Museum Interior	J.D. Hanes, Marybelle Moorehead
Non-Glass Items	Tarzan Deel
Nominating	Joy McFadden
Program	Bill Hagerty
Projects	Tarzan Deel
Publications	Mark A. Nye
Publicity	Cynthia A. Arent
Study Group Advisor	Marybelle Moorehead
1997 Convention	Mark A. Nye, Bud Walker
1997 Auction	Lynn M. Welker, Joe Andrejcek
1997 Glass Show	Mary Beth Hackett, Joy McFadden
1997 Flea Market	Mike Arent
<i>Crystal Ball</i> Editor	Lorraine Weinman
<i>Crystal Ball</i> Circulation Directors ...	Lisa and Mike Neilson

National Cambridge Collectors Inc. owns and operates the **Museum of Cambridge Glass** at 9931 East Pike Road, Cambridge, Ohio. Open April through October 9AM-4PM Wednesday through Saturday and Noon-4PM on Sunday. March open Friday-Sunday. Closed November-February, Easter, July 4th.

ADVERTISING RATES

Display Rates (camera ready ads preferred)

<u>Unit</u>	<u>Members</u>	<u>Non-Members</u>
Full Page	\$45.00	\$60.00
3/4 Page	\$35.00	\$50.00
1/2 Page	\$25.00	\$35.00
1/4 Page	\$15.00	\$25.00
1/8 Page	\$10.00	\$15.00

Classified Rates

10 cents a word \$2.00 minimum

Abbreviations and initials count as words. Type sizes cannot be mixed in classified ads. **Payment in full must accompany all ad copy.** Contact Editor for copy assistance.

Dealer Directory

Six Line Maximum \$24.00 for 12 month contract

Cambridge *Crystal Ball* assumes no responsibility for items advertised and will not be responsible for errors in price, description, or other information.

Advertising copy, letters, articles, must be received by the 5th of preceding month to be considered for publication in the next issue.

Please address all correspondence (include SASE) to:

**National Cambridge Collectors, Inc.
P.O. Box 416
Cambridge, OH 43725-0416**

President Rick Jones	914-631-1656
Vice President Mark Nye	517-592-3578
Secretary Bud Walker	609-965-2413
NCC Museum: Phone and Fax	614-432-4245

Please notify us immediately of any address change.

Opinions or information stated in any signed article or letter printed in the *Crystal Ball* are those of the author and may not agree with National Cambridge Collectors, Inc. The Editor reserves the right to refuse and to edit any material submitted for publication to conform to the editorial style of the *Crystal Ball*. Members are encouraged to write to NCC and the *Crystal Ball* sharing their knowledge and questions!

President's Message

Multi-Club Program is a Must

The topic of last month's column was that a major mission of this club is to promote education. It is a hallmark of NCC, we want our members and our friends to enhance their knowledge about Cambridge Glass.

Additionally, it is important that we recognize that true collectors may very well be interested in the works of other quality glass companies of the depression era. To that end, our program committee chair, Bill Hagerty, has put together an exceptional program for our November Quarterly Meeting.

We will have a four-person panel moderated by the knowledgeable Mac Otten. Members will have a chance to expand their knowledge not only of Cambridge but Heisey, Fostoria, and other glass companies as well. It is a program I am very much looking forward to and I think you should as well.

There should be more cooperation between glass clubs. We share common goals and a common affection for handmade elegant (and other) depression glass. A strong spirit of cooperation would serve us all well.

The November meeting will be held at the Cambridge Country Club. It was a terrific location for last November's meeting and we received great feedback from the attendees on our program on Rose Point. I know this year will be even better.

I highly encourage all members to attend. For those of you who have not had a chance to join us for an event in Cambridge, this will be a wonderful opportunity. Additionally, I'm checking into having the Museum open from 12 to 4 that day. Normally we close at the end of October, but it seems silly to attract a crowd of Cambridge-lovers and not have a chance to visit our exceptional Museum. We are also inviting the three Museum workers to the Saturday night dinner, as the guests of the board of directors, in appreciation for their work this year during a transition period.

I'm very pleased that our network of volunteers continues to grow. In particular, I'd like to thank

Clarke West for his efforts in investigating the creation of an endowment fund for NCC. This is an important step in assuring our long-term prosperity. At this point, our lawyer is reviewing this initiative and we may have news to report at the November Quarterly Meeting.

Also, Dennis and Mike Snyder have built a very strong financial system for the club and Charles Upton has quite seamlessly integrated correspondence with finance. We are saving several steps in the process and will save members money as well.

At the August meeting, we discussed establishing a technology committee to continue to track how we can improve not only operations, but be well-positioned for an Internet world. If you have interest and expertise in this area, would you please drop a note care of the P.O. box?

Finally, my thanks to Joe Andrejcek for volunteering to help Lynn Welker with our March auction. Lynn will be traveling quite a bit this winter, and Joe has agreed to field member phone calls and inquiries about the auction. It's a big job. Thanks, Joe.

We look forward to seeing you in November. The multi-glass company program is a must!

Rick

VISIT YOUR MUSEUM NCC Museum of Cambridge Glass

The museum is located on U.S. Route 40, one-eighth of a mile east of I-77 near Cambridge. Open April through October, 9 a.m. to 4 p.m., Wednesday through Saturday, and noon to 4 p.m. on Sunday. During March, open Friday through Sunday. Closed November through February, Easter, and July 4th.

Phone: (614) 432-4245.



Half Gallon Water Pitcher,
Pressed Handle.



Tall Handled Celery Holder.



Toilet Bottle
for Dressing Table.



Half Gallon Tankard,
Hand Made Stuck Handle.



Water Bottle.

How It All Began

Part III

by Mark Nye

"...There is no man, however, that judges what is wanted closer, and while giving something different in pressed glassware yet hits the popular idea, than A.J. Bennett of the Cambridge Glass Co. As told in these columns before, he has an original way of getting his designs. Instead of utilizing a piece of cut glass and making his imitation from that, he makes his own designs in cut glass and then produces his imitation, copying no one and having a distinct and different line when completed. 'Nearcut' glass has an enviable reputation. It received the highest award at the Louisiana Purchase Exposition <1904> and on several occasions has received even higher awards when judged by buyers. This year's productions will certainly sustain that reputation. The most massive and brilliant addition to 'Nearcut' productions is the Dorothy line. As stated, the design is original and its facsimile does not exist in cut glass. The beautiful metal so prominent a feature in the lines of this company is again to the fore. We've had several popular Dorothy's in days gone by, but they promise to be eclipsed by this one. The 'Fern' design is also an addition. It is a lighter weight line, and, of course, lower priced. It is an extensive one and contains a great number of pieces. For those who like the colonial, there is the Paul Revere. This is old English style and is a combination blown and pressed line. It has the wide panel effect and its massiveness gives it a very handsome appearance. The toy tea sets, which have become a fad, are produced by Cambridge in pleasing array. These are in imitation cut and are bound to delight the younger generation to the extreme. In display jars, Mr. Bennett has a line that is not equaled by any. The Roman and Venetian show jars with imitation cut glass foot and stoppers will be an adorning feature of any establishment as well as being very useful. The grocery display jars which have made such a decided hit are still there and promise to be in wider demand than ever before. Something entirely new is the glass rolling pin. This is very light and is easily kept clean, as the pin is a hollow glass cylinder, into which is fitted a wooden ring, which protruding at both ends makes handles." CHINA, GLASS AND LAMPS, January 12, 1907.

This was taken from a report of the 1907 Pittsburg Glass Exhibition.

One of the problems researchers encounter with trade journal reports is that more often than not line numbers or other definitive identifiers are not given. Another is the use of common names that may or may not appear in company catalogs, Cambridge being no exception. Sometimes common names will be used in a catalog for one year or one edition only. After that or perhaps even before, only the line number appears. Further complicating matters is the fact it appears Cambridge issued a number of catalogs during the Nearcut era and researchers have no sure way of knowing if we have copies of all or if there are still more to be found. A Cambridge advertisement published in the December 29, 1906 issue of CGL made mention of several Nearcut designs, including Sunburst and Paul Revere. The latter design was also cited in the preceding trade journal report. Yet, none of the known catalogs make mention of Paul Revere or Sunburst.

The October 26, 1907 issue of CGL carried an advertisement for "The NEW CIGAR JAR. Colonial Design." In fine print under the illustration of the jar is a line number, barely legible and the words Cigar Jar, Paul Revere design. The number may be 2360. This same jar turns up in the 2630 line. The 1910 Cambridge catalog had this to say about the 2630 line: "A very sensible plain cut fluted pattern that is of colonial effect, but low in price. When finished it is extremely bright and makes a good stock pattern." The listing includes at least three blown items, thus matching the description provided in the report of the 1907 Pittsburg show. Thus Paul Revere may very well be the 2630 line.

One candidate for Sunburst is the 2656 line even though most people would describe it as a star pattern. In fact it is known to Pattern Glass collectors as Star of Bethlehem. The 1910 Cambridge catalog had this to say about the line: "Cut Sunburst very clear, fine in shape and most desirable for the trade

(Continued on page 7)



No. 1.
Round Corner
Square Candy Jar



No. 2.
Bevel Corner
Square Candy Jar



No. 3.
Round Candy Jar



No. 4.
Egyptian Candy Jar



No. 6. 10 lb.
Square Show Jar



No. 7.
Round Candy Jar
and Cover



No. 8.
2 lb. Squat
Candy Jar
Tall Shape



No. 9.
4 lb. Octagon
Candy Jar



No. 11.
2 lb. Chewing
Gum Jar and
Cover



No. 17. Round
Chewing Gum Jar
and Cover



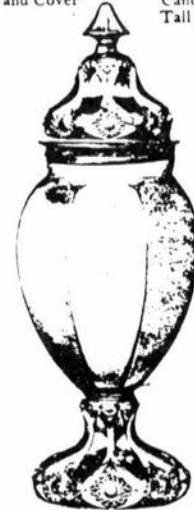
No. 19.
Tall Ring
Jar and Cover



No. 25.
Squat Ring Jar and Cover



French Jar and Cover



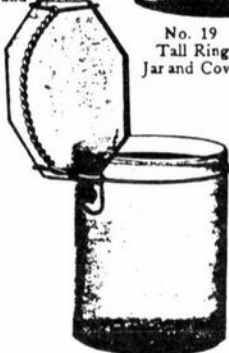
Venetian Jar and Cover



Roman Jar and Cover



No. 18. Patented
Hinge Cover Jar
(Closed)



No. 18. Patented
Hinge Cover Jar
(Open)



No. 14. Tall Display
Jar and Cover



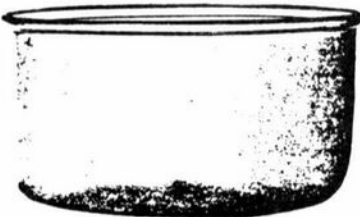
No. 15.
Inverted Show Jar



No. 25. 1 Gal. Display
Globe and Cover



No. 25. Iron Mould
Fish Globe, Ground Top



No. 40.
Shallow Aquaria or Lemonade Jar



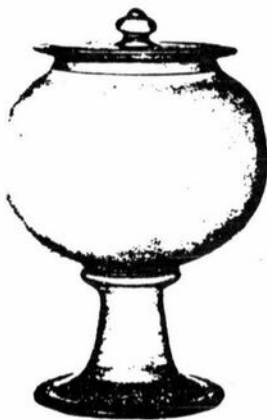
No. 20.
Hand Made Fish Globe
Fire Finished Top



No. 20.
Display Globe and Cover



No. 45. Tall Display Jar and Cover



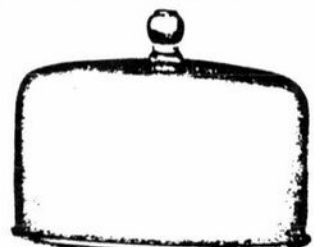
No. 14.
Footed Display Globe and Cover



No. 34.
Footed Fish Globe
Hand Made, Fire Finished Top



No. 45.
Tall Aquaria or Lemonade Jar



Cake or Cheese Cover

(HOW IT ALL BEGAN - Continued from page 5)

where a clean, attractive pattern is wanted at a reasonable price."

Dorothy is 2647, Fern or Fernland (its correct name) is 2635, and Feather is 2651.

The only listing available for the Dorothy line is from the 1910 Cambridge catalog and it lists some 30 pieces, including a number of nappies and the four-piece table set, spooner, butter and cover, sugar and cover, and cream. The Feather listing is more extensive, with over 70 pieces offered in the 1910 catalog, the same for 2630. Fernland, illustrated in a Cambridge catalog dated 1906 on the cover, consists of at least 46 pieces. The 2656 line, Sunburst or Star of Bethlehem, was made up of some 50 items. By 1913-1914, these lines, for the most part, had been discontinued. A few items remained available, but the complete sets were no longer being offered.

The catalog page captioned DISPLAY JARS AND FISH GLOBES comes from a Cambridge catalog issued circa 1916. This same page was used several years later in Catalog No. 10, issued circa 1920.

Willard Kolb to be Guest Speaker

Willard Kolb, noted glass researcher, of St. Clairsville, Ohio, will be the guest speaker at a joint meeting of the Glass Research Society of New Jersey and the Friends of Wheaton. The talk will be in the Wheaton Museum, Millville, New Jersey, on November 13, 1996 at 7:30 p.m.

Willard will talk about the little-known Rodefer Glass Company that was located in Bellaire, Ohio.

There will be light refreshments after Willard's talk. The public is invited. For additional information, call 609-965-2413.

Bud Walker
President Glass Research
Society of New Jersey

(QUARTERLY MEETING - Continued from page 1)

Cambridge glass at the NCC booth. Many books were sold and several new members were enrolled.

The next quarterly meeting of the National Cambridge Collectors will be November 2, 1996. The evening will consist of social hour, dinner, quarterly meeting, show and tell, and an educational program. We hope to have many members in attendance.

Corresponding Secretary Comments

by Charles A. Upton

We have had quite a few people writing to us, asking how they can sell, and buy, different pieces of Cambridge Glass. As you may know, or may not know, we are not permitted to appraise glassware for anyone. We are also not permitted to recommend anyone that could be contacted to buy glassware.

My first suggestion to these people is to place an advertisement in the Crystal Ball, listing the items that they want to buy or sell. This way they are delivering their advertisement to a lot of interested people.

Another suggestion is, if the item is something that the Acquisitions Committee feels is something that the Museum needs, we will contact them to buy the item or items for the Museum.

If this is not the case, I send these people a copy of the dealer directory, which appears in the Crystal Ball. We suggest that they contact the people, of their choice, listed in this dealer directory if they wish to have their glassware appraised, or if they wish to sell their glassware. We also send any other Classified listings of people wishing to buy certain things. This has been the practice in the past and if you were one of the lucky ones that received contact with any of these people, you had the chance to buy some very nice items.

So! If you are interested in buying or selling glassware, we suggest an advertisement in the Crystal Ball. I will send the most recent advertisement copy to these people when they inquire about selling their collections or pieces of Cambridge Glass. We want to make the Crystal Ball a marketplace for buying and selling glassware, and this is a good way to start.



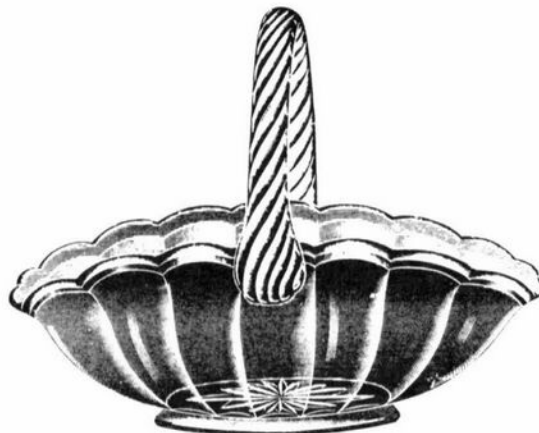
Half Gallon Blown Tankard,
Hand Made Handle.



Blown Water Bottle.



Pickle Jar.



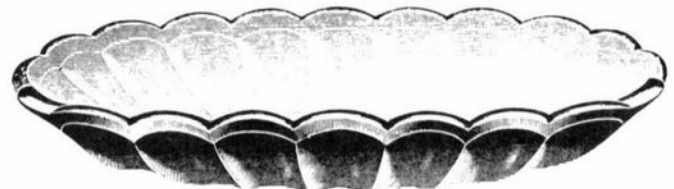
Handled Basket.



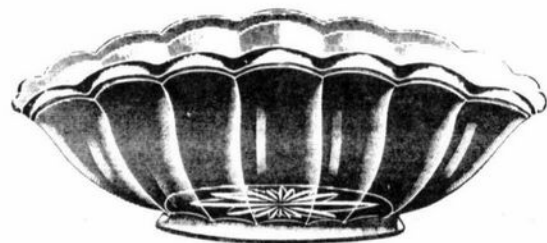
Sugar Sifter.



Blown Molasses Can.



Pickle Tray.



Deep Oval Olive.



Special Vase.



10 Inch Low Foot Bowl.



Silver.



Footed Bowl.



Comport E Shape.



Nappy A Shape



Low Footed Bon Bon.



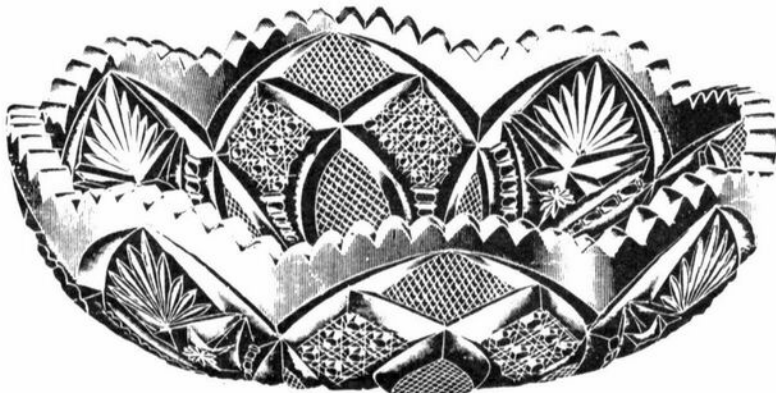
Oil Bottle.



Shaker.



Regular Nappy C Shape.



Shallow Preserve Nappy.



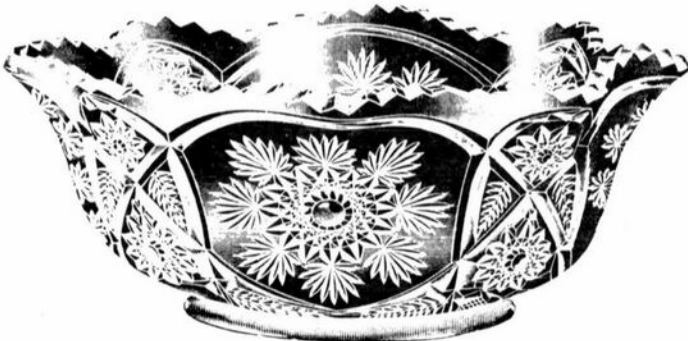
Footed Jelly Bowl.



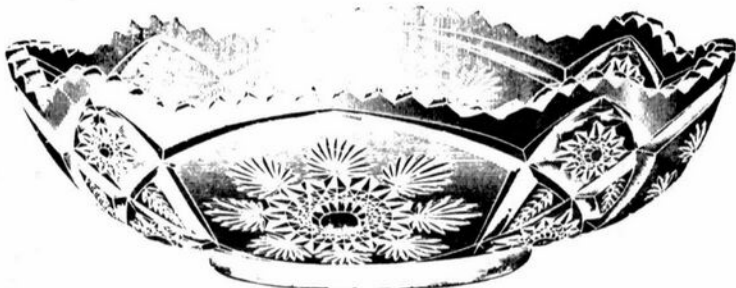
Nappy A Shape.



Nappy E Shape.



Nappy C Shape.



Nappy D Shape.



Pickle and Celery Tray.



Quart Jug.



Tall Celery.



Tall Vase.

August Quarterly Meeting Minutes

by Bud Walker, Secretary

August 24, 1996

After spending a busy morning making up additional packets of replacement pages for the '40s catalog, all the members present were treated to a delicious lunch. As an out-of-towner, I can vouch for the fact that Ohio ladies are excellent cooks, and Willard Kolb's yellow tomatoes were so large they covered your entire plate. If anyone went away hungry, it was their own fault as there was more food than we could possibly eat.

After lunch, President Rick Jones called the meeting to order. The first order of business was the treasurer's report. Charles Upton reported that there was \$15,782.68 in the checking account. In addition, he reported that we have \$61,000 in a CD. Charles also reported that our museum expansion fund, which is invested in the Templeton Fund, has grown from \$23,615 to \$26,950.88.

Acquisitions: Joe Andrejcek reported that he was thrilled to finally have a budget, as it makes it much easier when you know what you can spend. Some of the purchases are: a Martha Washington punch bowl, a three-part relish and a Portia ice bucket.

Bylaws: Bud Walker and Charles Upton to cooperate on any changes that might be required. Copy of existing bylaws will be published in a future Crystal Ball.

Planning: It was reported that Tarzan Deel is preparing a questionnaire to aid in long-range planning that will go out to all members.

Membership: Jeff Ross reported that membership was 1,377.

Expansion: Willard Kolb made known his feelings on the subject. After a lively discussion, most of those present agreed that purchasing additional acreage behind the storage building would be the most economical way to proceed. Willard is going to investigate this option.

Facilities: There had been a request for a dehumidifier. After checking, it was found that the heat pump needed to be switched to cooling in order to reduce the humidity.

Interior: Marybelle reported that now that she has retired, her plans are to clean the museum from top to bottom once it closes for the winter.

Program: Bill Hagerty reported that everything is set for November 2 at the Country Club. There will be a presentation on three of the local glass companies. The board has invited the three ladies, who have been responsible for the museum, as their guests.

Projects: Bill Hagerty reported that the shaker top mold is in the shop being repaired, and production will commence when the mold is completed.

Publicity: Cindy Arent reported that everything has been taken care of.

President Jones reported that from the White Plains show, NCC gained four new members and sold nearly \$1,000's worth of books.

Western Reserve Show: It was reported that Mark Nye would be unable to attend the show due to a previous commitment.

Crystal Ball: Lisa and Mike Neilson will assume responsibility for circulation. This should relieve Charles. As photographer for the company that prints the Crystal Ball, Mike will be able to keep an eye on things.

Convention: 1997 Convention is set for the fourth weekend in June. The theme will be "The '50s."

Being no further business, the meeting was adjourned.

Comment: This was by far the nicest August meeting I have ever attended. The weather was cool, the food was excellent, and those in attendance were truly interested in improving our convention, museum expansion, and making NCC more responsive to the membership.

Bogart's Bed & Breakfast

62 W. Main Street, New Concord
New Concord lodging in 1830 Federal
Style home, decorated with
antiques throughout.



Bogart's Antiques

7527 E. Pike, Norwich OH
Quality Antiques Bought & Sold

OWNERS: Jack & Sharon Bogart
872-3514 or 826-7439

Building Fund

by Charles A. Upton, Treasurer

As you probably already know, we established a Building Fund last year. This fund is to be used exclusively for building or remodeling only. The board of directors put \$25,000 of the club's money into this fund to get it started. It was invested in the Templeton/Franklin World Fund (Mutual Fund). This was done in October of 1995.

There is a "front end load" fee charged to buy into this fund, as there is with most other funds. The fee for buying into this fund was \$1,437.50. Combine this with the \$1,950.88 which the fund has gained, you come up with a net gain of \$3,388.38 since it was purchased. This represents a 13.55% gain in 11 months. We feel that this is a fair investment and one that represents growth for the Building Fund.

Despite this fund being established at members' request, we had just one dedicated donation in its first six months.

I came up with an idea, at the close of the 1996 convention, to see if I could get people to buy a share of the Templeton/Franklin mutual fund for the Building Fund. In a matter of 15 to 20 minutes I collected \$250 from the few people that were there when I suggested this idea. At the August board of director's meeting and at the quarterly meeting the next day, I made the suggestion again and collected another \$224.

Recently I mentioned this to a member through the mail and she sent enough money to buy two shares. She felt it was a terrific idea and thought that each and every member should buy a share each month of the year if they were really dedicated to seeing that this building fund will grow in the future. She also suggested that I write an article and put the idea before the membership and remind them in each issue of the Crystal Ball. I presented her suggestion to the board of directors and they gave me their blessings to see where it would go.

I've put the cost for one share at \$16 per share, even though the fund is listed at \$16.39 per share as of August 24, 1996.

Why don't you commit yourself, each and every member, associates included, to buying at least one share of the fund per year or month. That is only \$16 per year and we have approximately 1,400

members. $1,400 \times \$16 = \$22,400$. If you choose to buy a share each month, that would equal \$268,800 a year. Now with that kind of Building Fund, we would realize a nice fund in a short time, wouldn't we? I don't envision that to come true, but I believe we could commit ourselves to one share a year. Some have done much better than that. You be the judge as to what you feel you can afford. We can't do it on membership dues alone, because none of us will ever live long enough to see it come true.

Think about it! Are we, as a club or as members, really interested in seeing this club grow, or are we in it just for our personal gain and enjoyment? It's up to you!!!!

If you have read this through, we thank you for doing so. And if you respond, we all thank you from the bottom of our hearts because it is from dedicated people like you that we will all realize our goal, and that is to have a more beautiful and larger museum, here in Cambridge where the glass was born and produced, to give justice to the many artisans that produced this glass that we all like so much. If it were not for them, we would not be collectors and dealers, and we would not have this beautiful glassware to buy, collect, and sell. We can't do it without the help of many people like you!

Please mark your donations as "Building Fund."

On another note... It was suggested that we set up an Endowment Fund. Clarke West agreed to take on that job and has, in a short time, submitted his report. The report is presently in the hands of our corporate attorney. We should have this fund in place by the November meeting. We have had two inquiries about this already. We will have more information in a future issue of the Crystal Ball.

We all hope you had a great summer and look forward to seeing a lot of you at the November Quarterly Meeting. Let us hear from you!

***Why wait?
Buy your Mutual Fund shares
NOW!!***

~ NATIONAL STUDY GROUP REPORTS ~

Study Group #11 The Cambridge Nudes

The afternoon of August 17, 1996 The Cambridge Nudes congregated at the home of the Curnutts in Western Springs, Illinois. There we were treated to barbeque ribs and all the fixin's. The sated group of 10 Nudes and five guests lazily gathered in the Curnutts' dining room for our program.

Jim Curnutt enlivened the group with a very colorful program with great examples of the Cambridge opaque colors. Following the program we conducted our show and tell with the following in evidence:

- P-306 Pristine frosted 6" candy box and cover with gold band and gold cut stars
- Two 3797/67 Cambridge Square candlesticks, frosted Crystal with gold applied stars
- A 1931 Fostoria brochure "The Glass of Fashion" by Helen Ufford
- Fostoria 2375 (Fairfax) rose three-part relish, gold decorated
- 663 Crystal three-lite epergne with original paper label
- Fostoria 2639 9 3/4" Ivy duo candlestick in Crystal
- Atterbury & Co. Swan mid Greenery (Kamm) blue 3" two-hdl. mustard jar sans lid
- Fostoria 4121 rose 5" vase with gold decoration
- Old Morgantown 6080 Crystal 5 oz. wine etched Drake Basket
- Fostoria? 16" Regal Blue vase, twist design

Members present were: Jim and Rose Curnutt, Bob Cole, B.J. Kersey, Tony Vimmer, Mary Sue Lyon, Heather Moore, Sharon Moore, Don Sobolewski, and Mary Kreitling.

Guests were: Jean Vimmer, daughter Samantha and niece Jenny, and Norm and Barb Balliet.

- Submitted by B.J. Kersey

**Make Your Reservations
NOW
for the November Quarterly
Meeting**

Study Group #16 Elegant Glass Collectors

The Elegant Glass Collectors met on August 11, 1996 at the Westchester County Center, White Plains, New York, Parking Lot. Members attending were: Bill and Pam Earussi, John Corl, Gene Bender (new Cambridge member), Laura and Windsor Tracy, Brad Bernstein, and Charles and Loretta Weeks.

A picnic lunch was eaten while planning for the next meeting and subsequent meetings/host and hostesses. Our next meeting will be September 29 at the Extravaganza, and following we will be hosted by Loretta and Charlie Weeks. In October, the Atlantic City Show will be October 19 and 20, and will be hosted by Anna and Bud Walker. On November 24, we will meet at the Harrisburg Show, and be hosted by John Corl. The Great Northeast Depression Era Glass and Pottery Show is a beautiful glass show with a lot of Cambridge Glass to be seen and bought. The Cambridge table was manned by Tarzan Deel with some assistance from Study Group #16 members, especially Bonnie and Don Stevens on August 10.

- Submitted by Pam Earussi

*An early start means little
If you plan too much to do.
Everything gets only half done
If you rush to see it through.
Life is a series of puddles
In a reign that's watered down,
Pictures in a sepia finish
Instead of natural tint and tone,
Poems rushed to completion -
An idea only half thought out -
A deadline assayed yesterday -
Only a vague one tossed about.
It is good to top off softly
Anything worth doing at all
But the bulk that overthrew me
Needs be cut to twenty-four hours.
Small.*

Paul E. White 5/22/96

ISAACS ANTIQUES

We are taking this opportunity to thank you
for your past patronage.

We invite you to attend our
retirement sale to liquidate the entire inventory.

Thanks to All of You,
Doris and Roy

ISAACS ANTIQUES



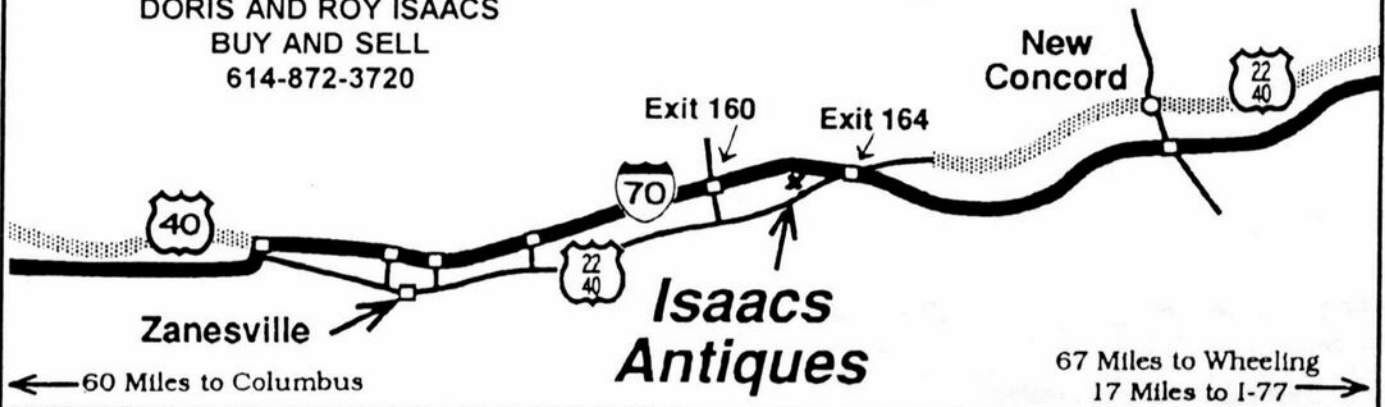
7525 East Pike
Norwich, Ohio 43767
614-872-3720

In East Pike Antique Complex - Rt. 40,
One Mile West of I-70 Norwich Exit #164

Hours 10 - 5:30 Mon. - Sat.
12 - 5:30 Sun.
Open Year Round

WE FEATURE GLASSWARE OF: CAMBRIDGE,
HEISEY, FENTON & FOSTORIA
Plus Art Pottery & a General Line of Antiques

DORIS AND ROY ISAACS
BUY AND SELL
614-872-3720



**Isaacs
Antiques**

67 Miles to Wheeling
17 Miles to I-77

WE CLEAN CLOUDY GLASS! SATISFACTION GUARANTEED

Yes, it is true that we really can restore the interior of your **cruet, vase, decanter** and other **internally etched** items back to near original condition!

We do not oil, wax or cover up the sickness in any way! We actually **remove** it.

No items are too sick to clean! If we cannot clean an item to meet your satisfaction, the cleaning is **FREE!**

Send no money up front. When we return your item a bill will be enclosed for the postage and cleaning. If you are not satisfied, only the return postage is requested.

Most items clean in 6-8 weeks. All glass is handled and cleaned at your risk. Some very cloudy items may take several additional weeks.

Cruet	\$20.00	Cocktail Shaker	\$30.00
Vinegar & Oil	\$25.00	Salt Shaker (one)	\$15.00
Cologne	\$20.00	Salt Shaker (pair)	\$25.00
Decanter	\$30.00	Water Bottle	\$30.00
Vases (under 12")	\$25.00	Lavender Jar	\$20-30.00

Ship to: **Kim Carlisle & Associates**
28220 Lamong Road, Dept. C
Sheridan, IN 46069
(317) 758-5767

The **DAZE** Inc.

SPECIAL OFFER
to NCC friends
\$2.00 OFF
the 1 year subscription price
when on this form or copy of it.

The Original National monthly newspaper dedicated to the buying, selling and collecting of American made glassware china, and pottery from this century. We educate and inform you each month with feature articles by top notch writers, readers letters, club happenings, reproduction news, show reports and there are hundreds of dealers to help you fill in the missing pieces of your collection. "Keep up with what's happening" . . . Subscribe today!

Name _____
Street _____
City _____
State _____ Zip _____
[] 1 year \$21.00 [] 2 years \$40.00 [] \$2.00 Single Copy
Subscription Hot Line: 1-800-336-9927
Exp. Date _____ Card No. _____
Signature _____

Orders to:

The Daze, Inc., Box 57, Otisville, MI 48463

Please allow 30 days for your first issue - Canadian Subscribers, add \$1.00 per year and subscribe by charge card only! This Special Offer may not be combined with any other special offer.
Offer Expires December 31, 1997



Stems Without Thorns

As the world's largest supplier of discontinued and active china, crystal, flatware and collectibles, Replacements, Ltd. has over 325 different patterns of Cambridge crystal.

And however much we enjoy selling pieces which were once thought irreplaceable, we love buying them as well. Thanks to people like you, our crystal inventory currently numbers in the hundreds of thousands, and the numbers keep growing every year.

So, if you've been unsuccessfully searching for that elusive piece of Cambridge - or any other type of fine crystal - call us for a free list of pieces available in your pattern. And, if you're looking to sell pieces you currently have, we can help you there, too.

REPLACEMENTS, LTD.

China, Crystal & Flatware • Discontinued & Active

1-800-REPLACE
(1-800-737-5223)

1089 Knox Road,
PO Box 26029, Dept. CB,
Greensboro, NC 27420

Extravaganza VII

GLASS FAIRE

WITH

**GLASS AUCTION, DISPLAYS AND
GLASS IDENTIFICATION**

Saturday, November 2, 1996

Glass Sale 9 AM to 5 PM

Seminars All Day

Auction 6 PM

Only \$5 for all events

King Richard's Antique Mall

12301 E. Whittier Blvd., Whittier, CA

SPONSORED BY

FOSTORIA GLASS COLLECTORS, INC.

A nonprofit organization dedicated to the study of Fostoria glass and the preservation of handmade American glassware.

Membership \$18 per year includes 16-page newsletter.

For more information call
310-410-1179

Proceeds benefit various museums and glass organizations
Present this flyer for \$1 off admission

PL



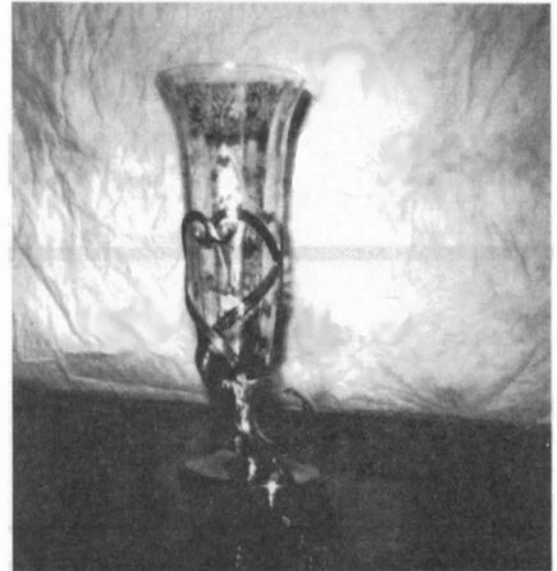
RECENT FINDS

- 10 1/2" Crown Tuscan swan, Style I
- 80 oz. Crystal ball jug with Sterling swan decoration
- Rose Point oil and vinegar

Editor's Note:

Thank you for sending your recent finds. Please keep sending snapshots too. We all appreciate hearing and seeing what other people are finding.

Thank You!



Rare Vase with Diane Etching



Crystal Ball Jug w/Sterling and Rose Point Vinegar



Mike and Lisa Neilson (new Crystal Ball circulation directors) holding their new 10 1/2" Crown Tuscan Style I swan



Rubina Pitcher and Glasses

~ GLASS ~ MARKETPLACE

Classifieds

WANTED: Two Monkeys Lamp - Crown Tuscan Scottie or Pouter Pigeon - Also looking for #2800/234 Crystal Community Wash Basin. **If you have or find, call collect 1-609-965-2413.**

WANTED: Cambridge Arms, Epergnes plus Accessory Pieces. Vases #2355 any size and bobeches #327. **Jody Stacken, 3022 Quail Creek Dr., Topeka, KS 66614. (913) 272-7118.**

WANTED: Hard to find Rose Point, Rose Point #3106 stems, Nude stems, and novelty items. Write price and description. **Nancy and Jim Finley, 711 West Broadway, Sedalia, MO 65301. Phone (816) 826-5032 or 827-0101.**

FOR SALE: #3011/9 Figure Stem Line, 3 oz. cocktail/w Crown Tuscan stem and foot, Mandarin Gold "Nude" stem, \$150. **P.O. Box 4062, Traverse City, MI 49685**

NOTICE

It has been more than five years since we have last raised postage rates. Since then we all know that mailing costs have continued to rise. Therefore, it is with regret that we find it is absolutely necessary for us to pass these costs that we have been absorbing along to members and other users of our mailing services.

The new rates, effective November 1, 1996, will be raised to \$3 for the first book sent in one mailing, and \$1 for each additional book sent in the same mailing. Furthermore, at the present time we are not increasing mailing costs on the Crystal Ball. However, we may have to address that issue in the future.

We hope you will be understanding of our efforts and continue to support book sales. The income from book sales is a vital part of funding operations at our Cambridge Glass museum.

Thank you for understanding and accepting this increase in postage rates.

from the Board of Directors of NCC
By: Marybelle Moorehead

CAMBRIDGE GLASS BOOKS FOR SALE

by National Cambridge Collectors, Inc.

Colors in Cambridge Glass

128 pages, 60 color plates, fully indexed. Hardbound with price guide \$19.95

1930-1934 Cambridge Glass Company Catalog Reprint *(temporarily Out of Print)*

250 page reprint of original catalog. Paperback with price guide \$14.95

1949-1953 Cambridge Glass Company Catalog Reprint

300 page reprint of original catalog. Paperback with price guide \$14.95

1956-1958 Cambridge Glass Company Catalog Reprint

164 page reprint of original catalog. Paperback \$12.95

Cambridge Caprice

200 page book illustrating the most popular line of Cambridge Glass. Lists color, decorations, reproductions and rare pieces. Paperback with value guide. \$19.95

The Home of "Near-Cut" Factory Post Card

50 cents each

Crystal Lady Video

\$15.00 each.

*For NCC Members, these publications at a 10 percent discount.
by Bill and Phyllis Smith*

Cambridge Glass 1927-1929

66 page reprint of original catalog with updated price guide. Paperback with identification guide \$7.95

by Mark A. Nye

Cambridge Rose Point

94 pages, fully indexed. Paperback with value guide \$12.95

Value Guide

Updated value guide for Rose Point Book. Included with above. Price alone, includes postage \$5.00

Cambridge Stemware NEW. 2nd edition. Same format as original. \$19.95

by Mary, Lyle and Lynn Welker

Cambridge Glass Company

120 pages of reprints from eight old catalogs. Paperback \$10.00

Cambridge, Ohio Glass in Color II, Spiralbound \$5.95
by Harold and Judy Bennett

1903 Cambridge Glass Company Catalog Reprint

106 page reprint of an original catalog. Paperback \$7.50

by Degenhart Paperweight and Glass Museum

Reflections, 45 page book giving a history of all 18 glass companies in Guernsey County. Paperback, with pictures. \$5.00 including postage.

Address orders to:

Books

**National Cambridge Collectors, Inc.
P.O. Box 416
Cambridge, OH 43725-0416**

Please add postage and handling to your order (first book, \$3.00; each additional book, \$1.00). Ohio residents add 6 1/2% state sales tax. Please send only check or money order, NO CASH, NO CHARGE CARDS. Dealer Discounts Available - Please Write!

DEALERS



DIRECTORY

NOTE: When writing to the dealers listed here, please enclose a SASE!

<p>DAUGHERTY'S ANTIQUES Jerry and Shirley</p> <p>Antiques and Collectibles * Mostly Glass</p> <p>Shows & Mail Orders 2515 Cheshire No. 402-423-7426 Evenings Lincoln NE 68512</p>	<p>"HAPPINESS IS" Buddy and Kathy Stultz 3106 Warren Court, Glen Allen, VA 23080 804-672-8102</p> <p>Specializing in American Made Glass We Buy & Sell, Shows & Mail Order</p>	<p>THE MUTED SWAN ANTIQUES 5486 Peachtree Rd. Chamblee, GA 30341 Heart of Chamblee Antique Row Specializing in Cambridge, Heisey and Fostoria</p> <p>Bill & Pat Miller 404-451-7620</p>
<p>Milbra's Crystal Buy & Sell Replacement and Matching Specializing in: Cambridge Milbra Long (817) 645-8066 Fostoria Emily Seate (817) 294-9837 Heisey PO Box 363, Rio Vista, TX 76093 and others</p>	<p>BUY-SELL (513) 390-3617</p> <p>Taste of Honey Glassware - Collectibles</p> <p>Clarke West 4888 Brannan Dr. E. Carole West Springfield, OH 45502</p>	<p>ARMORY ANTIQUES 188 West Main Street Plain City, OH 43064</p> <p>QUALITY THINGS Cambridge, Heisey, China, Silver, Furniture Mon-Sat 10-5 VISA/MC 614-873-4890</p>
<p>THE GLASS URN 456 West Main Street, Suite G Mesa, AZ 85201 602-833-2702</p> <p>Mail Order Shows Open Shop</p> <p>CAMBRIDGE, FOSTORIA, HEISEY, ETC.</p>	<p>ANTIQUES ON THE MALL SPECIALIZING IN CAMBRIDGE GLASS</p> <p>Bogart's - Bldg. #3 - Norwich, OH</p> <p>Virginia Bennett 614-432-4483 64183 Warne Drive, Cambridge, OH 43725</p>	<p>GATEWAY ANTIQUE MALL, INC. JUST NW OF MINNEAPOLIS-ST. PAUL, MN Next to Super 8 in Rogers, MN (I-94/101 Intersection)</p> <p>85 Dealers 7 Days, 10-6 612-428-8286 ELAINE STORCK, DIRECTOR</p>
<p>ETTELMAN'S DISCONTINUED CHINA & CRYSTAL Cambridge a Specialty</p> <p>PO Box 6491-CB Corpus Christi TX 78466 Phone 512-888-8391 Include S.A.S.E</p>	<p>D & D ANTIQUES Columbus, Ohio</p> <p>Dick Slifko SHOWS ONLY</p>	<p>RONI SIONAKIDES 6565 W. Herbison Rd. DeWitt, MI 48820 517-869-5981 Fostoria, Tiffin, Duncan, Cambridge</p>
<p>THE GLASS CUPBOARD P.O. Box 852 West End, North Carolina 27376</p> <p>Marcia Ellie Cambridge, Duncan, Heisey 910-673-2884 Shows, Mail Order</p>	<p>JUDY'S ANTIQUES Judy Bennett 422 S. Ninth Street (Corner of Jefferson) Cambridge, Ohio 43725 BUYING Ph. 614-432-5855 SELLING</p> <p>CAMBRIDGE GLASS MY SPECIALTY</p>	<p>YOU CAN ADVERTISE YOUR ANTIQUe SHOP HERE!</p>
<p>FINDER'S ANTIQUE HOUSE New Home of Elegant Glassware 1169 Piney Forest Rd. Danville, VA 24540 (804) 836-6782 Cambridge-Heisey-Duncan-Fostoria</p>	<p>GREEN ACRES FARM 2678 Hazelton Etna Rd., Pataskala, OH 43062 (State Route 310 North)</p> <p>Sat & Sun 1-7 PM 614-927-1882 Antiques, Crystal Glass and Collectibles</p>	<p>CRYSTAL LADY 1817 Vinton St., Omaha, NE 68108 Joann D. Hagerty Bus. 402-341-0843 Res. 402-391-6730 Specializing in Elegant Glass & Collectibles</p>
<p>ASK Specializing in Cambridge. Wide variety.</p> <p>Booth #14 in the Antique Mall of Boswell 90 miles south Chicago, right on U.S. 41. 7 days a week 10-5, except Sun. 12-5 (317) 869-5525</p>	<p>FLORENCE SOLITO 54 Old Stafford Rd., Tolland CT 06084</p> <p>Stock All Elegant Glassware Mail Order Since 1978 Send Wants</p> <p>203-872-3294 Satisfaction Guaranteed</p>	<p>YOU CAN ADVERTISE YOUR ANTIQUe SHOP HERE!</p>
<p>MICHAEL KRUMME Cambridge*Heisey*Fostoria*Duncan Miller*Paden City New Martinsville*Fenton*Tiffin*Imperial*Morgantown</p> <p>I search - Send detailed want list - all kept on file PO Box 5542 Santa Monica, CA 90409</p>	<p>YOU CAN ADVERTISE YOUR ANTIQUe SHOP HERE!</p>	<p>MARGARET LANE ANTIQUES 2 E. Main St., New Concord, OH 43762 Lynn Welker 614-826-7414</p> <p>Cambridge Glass Matching Service Hours Mon-Fri 10-12 AM, 1-5 PM or by Appointment</p>
<p>GLASS RESTORATION</p> <p>BRILLIANT DON & LYNNE CRYSTAL WORMLAND ELEGANT MT. CLEMENS, MICH DEPRESSION 810-468-3519</p>	<p>ALADDIN LAMP BOOKS Free List Figurine Lamps Wanted Bill & Treva Courter 3935 Kelley Rd. Kevill, KY 42053 Phone/FAX 502-488-2116</p>	<p>DEXTER CITY ANTIQUE MALL P. O. Box 70, Dexter City, Ohio 45727 (614) 783-5921</p> <p>Located on Ohio St. Rt. 821 Between Exits 16 & 25 off I-77 Just 30 min. South of Cambridge, Ohio</p>

National Cambridge Collectors, Inc.
NOVEMBER QUARTERLY MEETING

Saturday, November 2, 1996
Cambridge Country Club

COCKTAILS - Cash Bar at 5:30 p.m.
DINNER at 6:00 p.m.
QUARTERLY MEETING at 7:30 p.m.

**PROGRAM: SPEAKERS TO TALK OF PAST YEARS OF
CAMBRIDGE, HEISEY, FOSTORIA, AND IMPERIAL.
SHOW AND TELL**

Cambridge Country Club, Route 209, 2 1/2 miles south of I-70.
Buffet dinner: Sliced roast beef au jus or baked chicken, California medley
of vegetables, potatoes au gratin, salad and dessert bar

\$12.50 per member (includes tax and gratuity)

PLEASE MAKE YOUR RESERVATIONS EARLY!

**RESERVATIONS MUST BE RECEIVED AT THE NCC POST
OFFICE BOX BEFORE OCTOBER 28**

**NOVEMBER
QUARTERLY MEETING**

Saturday, November 2, 1996
Cambridge Country Club

Name(s) _____

Number Attending _____

Amount Enclosed _____
(\$12.50 per member)

Mail to:

National Cambridge Collectors, Inc.
P.O. Box 416
Cambridge, OH 43725-0416

**RESERVATIONS MUST BE
MADE BEFORE OCTOBER 28**

National Cambridge Collectors Inc
PO Box 416
Cambridge OH 43725-0416

FIRST CLASS MAIL
U.S. POSTAGE
PAID
PERMIT NO. 1
CAMBRIDGE, OH

FIRST CLASS MAIL

Membership Renewal Notice

**If the date on your address label is 10-96,
this is your LAST ISSUE of the Crystal Ball.**
Please take a moment and renew now. Thank you!