



Cambridge Crystal Ball

Published monthly by National Cambridge Collectors, Inc.
to encourage and report the discovery of the elegant and boundless product of the
Cambridge Glass Company of Cambridge, Ohio

Issue No. 301

May 1998

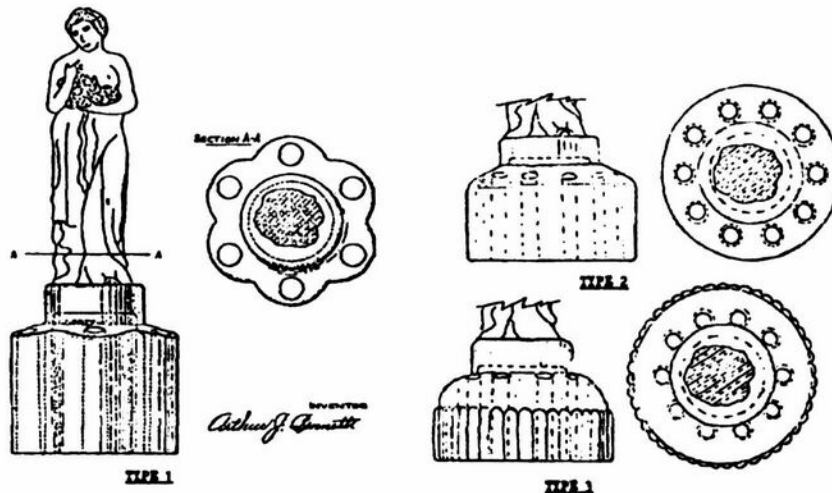
This is a Fine Arrangement!

by Georgia G. Otten

The spring flowers abound and summer flowers are coming soon. Time to bring some inside for the table. Want to make it perfect? Need some help? Well, the answer could be to use one of the numerous Cambridge flower arrangers. Cambridge made many different styles of arrangers, but I would like to write about the figurals. The Miami Valley Study Club used this as a topic for one of their monthly meetings.

I believe patent number 1,645,577 resulted in one of the most recognizable Cambridge production items. The patent application for a "flower holder" was made by A.J. Bennett on January 23, 1926. The patent was granted on October 18, 1927.

Below is a copy from the patent application. Also shown are three base types.



Inside This Issue:

- Your Board Vote Really Counts!
- March Quarterly Meeting Minutes
- The Opal Novelty Decanter No. 308
- NCC Convention Update
- NCC Convention Schedule
- Convention Registration
- Nominees for Board of Directors

Type 1 has the longer vertical flutes and is the base shown on the original application.

Type 2 has no flutes. It is a smooth-sided base.

Type 3 represents the latest of the bases. It has short flutes which are close together.

(Continued on page 4)

Cambridge Crystal Ball

Official publication of National Cambridge Collectors Inc., a non-profit corporation with tax exempt status. Published once a month for the benefit of its members. All rights reserved; reproduction in whole or in part without written permission of NCC and the author is prohibited.

Membership is available for individual members at \$17.00 per year and an additional \$3.00 for associate members (12 years of age and older, residing in the same household). Of the master member dues, \$12.00 is credited to a one-year subscription to the *Crystal Ball*. All members have voting rights, but only one *Crystal Ball* per household. **Multi-year memberships are available: 2 years for \$33.00, 3 years for \$49.00.**

1997-1998

OFFICERS AND COMMITTEE CHAIRPERSONS

President	Richard D. Jones
Vice President	Mark A. Nye
Secretary	Lynne Verbsky
Treasurer	Charles Upton
Sergeant-at-Arms	Tarzan Deel
Acquisitions	Kelvin Moore
Budget & Finance	Dennis Snyder
By-Laws	Bud Walker
Corresponding Secretary	Charles Upton
Technology	Tarzan Deel
Membership	Jeff Ross
Museum Expansion/Relocation	Willard Kolb
Museum Facilities	Carl Beynon, Joe Miller
Museum Interior	J.D. Hanes, Marybelle Teters
Non-Glass Items	Tarzan Deel
Nominating	Joy McFadden
Program	Bill Hagerty
Projects	Bill Hagerty
Publications	Mark A. Nye
Publicity	Cynthia A. Arent
Study Group Advisor	Marybelle Teters
1998 Convention	Mark A. Nye, Bud Walker
1998 Auction	Lynn M. Welker
1998 Glass Show	Mary Beth Hackett, Joy McFadden
1998 Flea Market	Bud Walker
<i>Crystal Ball</i> Editor	Lorraine Weinman
<i>Crystal Ball</i> Circulation Directors ...	Lisa and Mike Neilson
WebMaster	Don Stevens

Internet website: www.cambridgeglass.org

National Cambridge Collectors Inc. owns and operates the **Museum of Cambridge Glass** at 9931 East Pike Road, Cambridge, Ohio. Open April through October 9AM-4PM Wednesday through Saturday and Noon-4PM on Sunday. March open Friday-Sunday. Closed November-February, Easter, July 4th.

ADVERTISING RATES

Display Rates (camera ready ads preferred)

Unit	Members	Non-Members
Full Page	\$45.00	\$60.00
3/4 Page	\$35.00	\$50.00
1/2 Page	\$25.00	\$35.00
1/4 Page	\$15.00	\$25.00
1/8 Page	\$10.00	\$15.00

Classified Rates

10 cents a word \$2.00 minimum

Abbreviations and initials count as words. Type sizes cannot be mixed in classified ads. **Payment in full must accompany all ad copy.** Contact Editor for copy assistance.

Dealer Directory

Six Line Maximum \$24.00 for 12 month contract
Also included - Listing on our Internet site at:
www.cambridgeglass.org

Cambridge *Crystal Ball* assumes no responsibility for items advertised and will not be responsible for errors in price, description, or other information.

Advertising copy, letters, articles, must be received by the 5th of preceding month to be considered for publication in the next issue.

Please address all correspondence (include SASE) to:
(or E-Mail NCC_Crystal_Ball@compuserve.com)

National Cambridge Collectors, Inc.
P.O. Box 416
Cambridge, OH 43725-0416

President Rick Jones	914-631-1656
	or E-Mail Caprice0@aol.com
Vice President Mark Nye	517-592-3578
Secretary Lynne Verbsky	216-661-7382
NCC Museum: Phone and Fax	740-432-4245

Please notify us immediately of any address change.

Opinions or information stated in any signed article or letter printed in the *Crystal Ball* are those of the author and may not agree with National Cambridge Collectors, Inc. The Editor reserves the right to refuse and to edit any material submitted for publication to conform to the editorial style of the *Crystal Ball*. Members are encouraged to write to NCC and the *Crystal Ball* sharing their knowledge and questions!

President's Message



Your Board Vote Really Counts!

Every May in the *Crystal Ball* your ballots for that year's election to the NCC Board of Directors appears as well as registration packets for the annual NCC Convention.

What you may not know is that each year a minority of the membership takes the time to fill out the board ballots. Last year, out of our 1300+ members, fewer than 250 were returned.

So why is it important to vote? Other than all the classic reasons to vote in any election, maybe we should recap what the board of directors does in a national collectors club like ours.

Virtually every decision on how to structure, maintain, and invest in the club goes through the board of directors. Any allocation of money requires a roll-call vote of the board. The decision on how to handle our financial and physical assets is a board discussion. By-law revisions require board approval.

The board is just 12 people out of our membership. Thus, each of their votes represents over 100 members. They are trying to act in your interest and need to know your opinions to insure that they are being responsive to member needs.

Being a board member is a major responsibility. It involves attending a quarterly meeting in Cambridge. At this time, six board members live in the state of Ohio and six don't. They must travel from Virginia, New Jersey, Michigan, Illinois, New York, and either Nebraska or Florida (Bill Hagerty). It is a considerable investment of time and money, none of which is reimbursed. It is all volunteer.

Thus, to be a board member you must really love Cambridge Glass and the club. It is a tremendous commitment. Each year we look for three more committed people. (Or is that people who should be "committed"?) Each board term is for four years and three seats are up for reelection each year.

Usually there has been a bit of an advantage for incumbents running for reelection. One year in the recent past, in fact, only the three incumbents were even nominated. Given that the election was hardly in doubt, we had even fewer people vote than normal.

This year is VERY DIFFERENT. Two of our long-term board members - Joe Andrejcek and Mark Nye - have decided not to pursue reelection. Thus, this year is likely to be one of the most "wide-open" elections we have ever seen.

That's why I think it is paramount for you to vote. Read the biographies of the candidates who have been nominated. Each is a valued member who has made important contributions to the club, and each of whom is highly committed to making even more contributions of time and energy if elected to the board. Please take a minute now and vote. Thanks!

We should all thank Mark and Joe for their many years of service to the board. They have assured us that they wish to remain very active in the club.

Mark is currently our vice president. He is a past president of NCC and is currently our convention chairman and head of the Publications Committee. Mark has represented NCC in so many ways from his monthly articles in the *Crystal Ball* and *The Daze* to his appearances at many glass shows all around the country. He authored the *Rose Point* and *Caprice* books for NCC and labored to get help to maintain up-to-date value guides for our other publications. Where would we be without him?

The same can be said of Joe. He has helped this club in so many positions over the years. Most recently he was chairperson of our Acquisitions Committee and fought to get a healthy and fair budget to add to the NCC Museum's permanent collection. (He got it!) He also recently served as secretary and worked with Lynn Welker on the auction. Joe has the distinction of being one of the first 30 members to join NCC.

I owe a big "thank you" to both of them for helping me understand what it meant to be a board member and truly work hard for a club you believe in. I also thank the other nine board members for their fine and hard work. We wouldn't have a club without all of their contributions. Please take a minute now to read about the 1998 board slate and then vote. Help keep our board and club strong and vibrant. We need your support.

Pete

**VOTE
FOR
JOHN CORL
for
Board of Directors**

- A Dedicated Member Who WILL WORK To Help Strengthen Our Club Today, and Build on This Foundation for Tomorrow, thus Insuring a Strong and Successful Future for NCC.
- A Qualified Member Who WILL WORK To Help other Members Achieve and Grow With and For NCC, The Best Glass Collectors Club on Earth.
- Paid for by the committee to elect John Corl.
- Co-chairpersons Bud and Ana Walker, and other members of the Elegant Glass Collectors club and study group.



1998 Calendar Planning

Mark your calendars now with these important events during NCC's 25th Anniversary Year:

June 24-28

Silver Anniversary Cambridge Convention
Pritchard Laughlin Civic Center

June 26-28

NCC Glass Show and Sale
Pritchard Laughlin Civic Center

June 27

"NCC Saturday Glass Dash"
Beech Grove Family Development Center
Cambridge, Ohio

June 28

NCC Annual Meeting
Pritchard Laughlin Civic Center

August 22

August Quarterly Meeting and Work Session
NCC Museum
Cambridge, Ohio

November 7

November Quarterly Meeting and
Education Program
Cambridge Country Club (tentative)



**TIFFIN GLASS
COLLECTORS CLUB**

13TH ANNUAL SHOW & SALE

Featuring *TIFFIN GLASS*
& Other Fine Glassware

SCHOOL OF OPPORTUNITY
780 E. Co. Rd. 20, Tiffin, Ohio

Sat., June 27, 1998 10 AM - 5 PM
Sun., June 28, 1998 11 AM - 4 PM

ADMISSION \$3.00

Saturday Banquet - 7 PM
Reservations Required

Speaker: Leslie Piña, Glass Author

Information: 419-447-5505 or 419-447-4452

(FINE ARRANGEMENT - Continued from page 1)

Although the patent application shows a figure similar to what we know as "Rose Lady," The Cambridge Glass Company had already advertised the innovation in CHINA, GLASS, AND LAMPS. The cover March 29, 1926, featured Geisha Girl (One Bun), and the May 17, 1926, edition featured a 13" Draped Lady on Style 1 base. Rose Lady appeared on the cover November 21, 1927. It is not clear which figural came first without documentation, but the fact is that the patent was for the base idea and not the figural. For example, the number 1,645,577 appears on the OVAL BASE of a TWO KID; on a STYLE 2 base on an 8 1/2" DRAPED LADY; and on a 6" BASHFUL CHARLOTTE. I have not seen the patent number on a Style 1 base.

(Continued on page 8)

March Quarterly Meeting Minutes

Pritchard Laughlin Civic Center, Cambridge, Ohio

March 6, 1998

by Lynne R. Verbsky, Secretary

Prior to the official opening of the meeting, President Rick Jones reminded us that 20% of the Cambridge Glass Auction money will go to benefit the NCC. He also thanked Lynn Welker and the group of volunteers who worked very hard to put the auction together.

President Rick Jones called the meeting to order at 7:50 p.m. The members voted to waive the reading of the November Quarterly Meeting Minutes and to accept them as published in the *Crystal Ball*.

Charles Upton presented the treasurer's report as of December 31, 1997, and gave us comparisons between 1997 and 1996. Total Net Income was \$56,932 in 1997 and \$48,902 in 1996. Total Direct Costs were \$27,864 in 1997 and \$29,498 in 1996, which is a decrease by almost 6%. Net Cash Operating Income in 1997 was \$22,020 compared to \$11,614 in 1996. Net Investment Income was \$10,425 in 1997 and \$8,026 in 1996. Net Income for the Period was \$26,448 in 1997 compared to \$13,655 in 1996, an increase of 93.69%. Net Change in Working Capital was \$29,698.50 in 1997 and \$17,966.91 in 1996. Fund Equity from Liquid Assets went from \$131,392 in 1996 up to \$162,899 in 1997; and Fund Equity from Non-Liquid Assets was \$107,955 in 1996 and \$106,054 in 1997. Retained Working Capital went from \$17,967 in 1996 up to \$29,698 in 1997. Our Total Funds as of March 5, 1998, are \$145,835.18, broken out by Operating Fund, \$56,539.64, Museum Fund, \$47,097.54, Building Fund, \$41,037.00, and Endowment Fund, \$1,161.00. Charles also stated that if anyone wants to see details of the reports, you're welcome to ask him. To summarize, it was a very good year and we are in much better financial health with the additional \$30,000 in growth.

President Rick Jones announced that we received a donation of \$300 from the Fostoria Glass Collectors of California. They would like for us to use the donation for acquisitions and to send them pictures of the glass, to be published in their newsletter.

The following committees had reports or discussion:

Acquisitions: Kelvin Moore reported on some wonderful new Cambridge glass that he has purchased for the NCC Museum: a relish with the four pelicans, a Windsor Blue flying nude bowl, a 3400 cocktail shaker, and several stems. Please let him know if you see any great pieces that he could purchase for our Museum.

President Rick asked for a show of hands on who has Internet access, and the number has easily doubled from last year. There is an auction site on the Internet, and if

you see HMOORE@MIDWEST.NET, it would be nice if you asked Kelvin if he's bidding for the Museum. Last week, Kelvin purchased a Rondo vase with the Cambridge sticker for only \$30, being the only bidder.

Budget and Finance: We have a budget to operate by this year. The board approved a budget of approximately \$26-27,000, and since the forecast had been \$41,000, this leaves us with a surplus of \$15,000 which will give us some flexibility. It could be used for repair work for the Museum or it could be directed toward the Building Fund at the annual meeting. Rick mentioned that we appreciate Dennis' work in building the database.

By-Laws: Bud Walker reported one proposed change to be published in the next issue of the *Crystal Ball*. It is a one-word change at the request of our accountant, from a financial "review" to "compilation." This is a level down in terms of scrutiny and a review would cost more. If anyone has any questions, Dennis would be willing to talk to you.

Corresponding Secretary: Charlie Upton asked that we please use our membership cards when renewing so that he doesn't have to look up the membership number and expiration date.

Membership: Jeff Ross reported that the membership is stable, approximately the same number as we had in November. He would like to accomplish two items by June. The first item is to get the permanent membership cards out. The second item is to put "National" back into the NCC. Jeff is working on getting a regional network of people to coordinate study groups and glass shows. Rick Jones reported that the board authorized a budget for a video of an overview of the NCC. We will be able to review the video at Convention, and its first road show will be at the N.D.G.A in July in San Antonio. Jeff also mentioned that he stopped sending out surveys on late renewals, which he has done for three years. The two main reasons for not renewing were: everything is centered around Cambridge and the member did not live close enough, and that the member wanted more information on glass shows and similar events. Rick also mentioned that people want to see information on reproductions, and thanks to Georgia Otten, Bill Hagerty, Mark Nye, and others, articles were published in the *Crystal Ball*. If anyone else is interested and has knowledge to contribute, please let them know.

Museum Facilities: Carl Beynon said that now that we have a budget to live by, we will be able to purchase

(Continued on page 15)

Triangle-C Finds

The Opal Novelty Decanter No. 308

by Joseph A.A. Bourque Sr.

While attending a local country auction I spotted an old "milk glass" decanter with stopper inside a box lot. Upon examining it, my heart skipped a beat. I recognized a certain design I had been seeking for over 20 years. I immediately replaced it as gingerly as I had picked it up. I showed absolutely no interest in it by moving right along to the next box lot.

The local auction crowds are mostly antique and/or collectible dealers and get to know each other. Very few of them can identify Cambridge glass. Those that know me realize I'm a student of glass and know I collect Cambridge. The last thing I want my competitors to know is that I'm interested in a certain piece of Cambridge. This way it keeps the bidding down for me.

As casually as I could gather myself to do, I walked to the rear of the hall and sat down. I had a bad case of Triangle-C Jitters, and not only because I knew that beautiful old white glass decanter was Cambridge. What I also knew was that on the bottom of that box lot I had seen, there was another identical decanter! After searching 20 years and never seeing one, then suddenly seeing a pair within a few seconds was quite a surprise to me.

As I sat back in my chair thinking about the two white glass decanters, I wondered whether or not they were damaged; I wondered how much I was willing to pay for them; I wondered how long I would have to wait for them before they were put up for sale. As I was having this latter thought, let me tell you that all this anxiety ended about one minute later.

Just about the moment I sat down, the auction started. The very first item to go up for sale was the box lot containing the two decanters. My Triangle-C Jitters doubled, but I came out a winner. I was able to purchase the box lot. I became the proud owner of those two No. 308 decanters depicted in Figure No. 1.

Both decanters are perfect, as is one stopper, the other having been damaged at the bottom, but was repaired. My joy does not stop here. I had purchased an exact stopper about ten years back, which is a perfect fit and match.

(Continued on page 7)

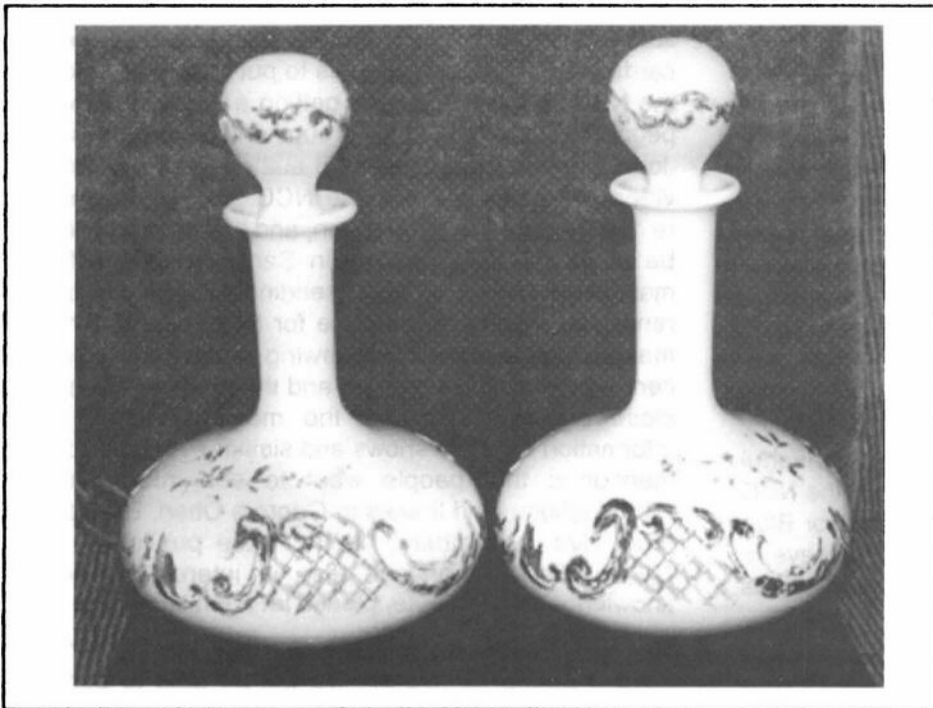


FIGURE 1

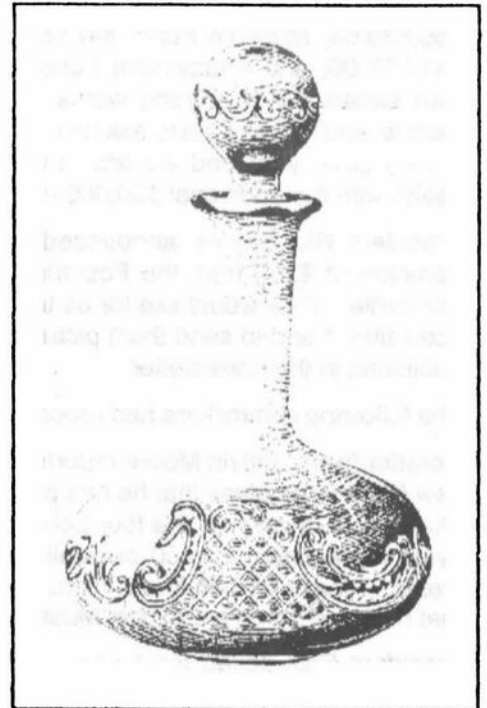


FIGURE 2

(OPAL NOVELTY DECANTER - Continued from page 6)

DESCRIPTION: Decanter and Stopper No. 308; vessel capacity, 30 ounces; vessel is three blown mold and the stopper is four blown mold; type of decoration, embossed; design, vessel - crosshatched medallion w/ "C" scroll designs on either side, one complete design in each of three sections separated by the three equidistant mold marks; design, stopper - single band of "C" scrolls; color, white; type of bottle, squat with long neck having inner grind for stopper; type of stopper, ball type with cut-shut style bottom (usual small nub protruding). Most of the embossing design was gilded, and they each have a painting in oils of flowers and sprigs, probably forget-me-nots.

The Mysterious Mark To Look For:

Dear Readers, as a sequel to my article, I'm going to share the mysterious design to look for with you. Once you know it, you should never forget it. I remembered it for 21 years. (Bear in mind that there are plenty of these look-alike milk glass type of decanters around, at least in the different shops I go through, and unless they have the embossing from a Cambridge catalog, they may be difficult to identify.)

Look at Figure No. 2. and note the large cross-hatching (or trellis-type) design. Touching the left side of this trellis design is a rather large inverted "C" scroll design. Using the tip of your left index finger, cover the bottom curl of this "C" scroll design. Your left index finger is now pointing at the **HEAD AND NECK OF A SWAN** (a Cambridge Swan, that is). If you can't find it, look at Figure No. 3 where it is pointed out.

I hope you each find a Triangle-C Swan Decanter in opal glass.

Figures No. 2 and 3 come from a 1903 Cambridge Glass catalog. For a reprint of this catalog by Harold and Judy Bennett, see the book ad in last month's *Crystal Ball* on page 16.

Until next time,

Joe

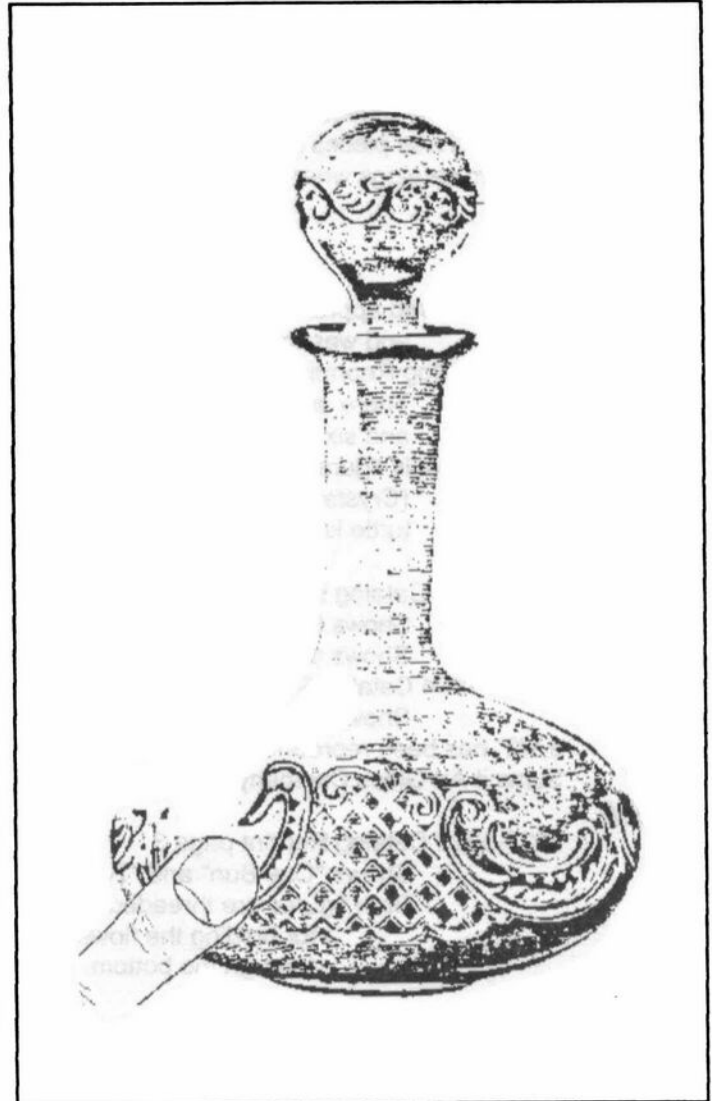



FIGURE 3

Bogart's
Bed & Breakfast
 62 W. Main Street, New Concord
 New Concord lodging in 1830 Federal
 Style home, decorated with
 antiques throughout.



Bogart's Antiques
 7527 E. Pike, Norwich OH
Quality Antiques Bought & Sold

OWNERS: Jack & Sharon Bogart
872-3514 or 826-7439

Fostoria Glass Society Presents
 18th Annual
FOSTORIA CONVENTION
"Fostoria in the 1950's"
 June 12, 13 & 14, 1998
 DELF NORONA MUSEUM
 Eighth Street & Jefferson Avenue
 Moundsville, West Virginia

Show and Sale
 Friday, June 12 - Premier - 6:00 to 9:00 p.m.
 Admission \$8.00
 Saturday, June 13 - 11:00 a.m. to 5:00 p.m.
 Sunday, June 14 - 11:00 a.m. to 4:00 p.m.
 Admission \$3.00
 for more information, contact: Trun (304) 737-2006

Glass Auction
 Saturday, June 13 - 6:00 p.m. (Preview 5:00 p.m.)
 for more information, contact: Larry (304) 845-3711

Glass Flea Market
 Sunday, June 14 - 8:00 a.m. - Admission \$7.50
 FREE admission - 10:00 a.m.
 for more information, contact: Clara (304) 845-3897

Benefiting the Fostoria Glass Museum
 Moundsville, WV (304) 845-9188

(FINE ARRANGEMENT - Continued from page 4)

At our meeting we had 26 examples on display. These represented 12 of the 13 figurals. (The "Eagle" owned by one of our members was in the museum.) The figurals were in Crystal and 13 different colors, and all three base styles were shown. We had all these pieces in front of us and that is so educational. Here is some information about the figures and page numbers from catalogs where you can see each one. Examples can also be found on various pages in "Colors by Cambridge."

TURTLE

First appeared approximately 1914 in a Nearcut catalog with other Ebony glass and was the flat design. (See *Crystal Ball* 101, page 8, for copy)
1940 Catalog Reprint page 408 - Shows dome back style.
There are 19 holes: 13 are large and are bored completely through and six are small and do not go completely through.
This is the only figural I found with a mention of being known in Royal Blue. (*Crystal Ball* issue No. 101, page 9), and mention of a dark green turtle known in California (*Crystal Ball* Issue 98, page 7).

DRAPED LADY

1927-1929 Catalog Reprint page 3
Shows 8 1/2" with Style 2 base
Shows 13" with Style 1 base
1930 - 1934 Catalog Reprint page 49
Shows 8 1/2" with Oval base (a smooth-sided base like Style 2)
8 1/2" has been reproduced by Imperial and Mirror Images
Summit Art Glass Company now owns this 8 1/2" mold with the oval base

GEISHA

1927-1929 Catalog Reprint page 3
Shows "One Bun" and "Two Bun" figures
Both figures are threaded at the bottom for screwing into a glass base that is bored for holding the flowers. The base has a metal retaining ring inserted into the center through the bottom. Both figures use the same base.

ROSELADY

1927-1929 Catalog Reprint page 3
Shows Style 2 base

EAGLE

1927-1929 Catalog Reprint page 3
There are 10 holes in the base for flowers and the figure is 5 5/8" tall

TWO - KID

1927 - 1929 Catalog Reprint page 37
Shows oval base (a smooth-sided base like Style 2)
1930 - 1934 Catalog Reprint page 49
Shows Style 2 base

BASHFUL CHARLOTTE

1930 - 1934 Catalog Reprint page 49
Shows 6" and 11" with Style 2 base. These sizes are taken from mold information
The actual measurement may vary because of sagging or settling during cooling
6" reproduced by Mirror Images. Ribbed base and no holes. (no longer a flower holder)
11" reproduced by Summit Art Glass Company

BIRD ON A STUMP

Appears to be the same Style 2 base as the Eagle.
Unable to locate information to confirm as Cambridge

MANDOLIN LADY

1927 - 1929 Catalog Reprint page 59
Has Style 2 base
The figure can be straight up; straight up with head turned;
and bent over with head turned.

Convention 1998

SILVER ANNIVERSARY

by Mark Nye, Convention Chairman

The convention registration form is on page 11 in this issue. Advance registration is necessary for planning purposes. As in previous years, there will be an early-registration prize drawing. To be eligible, your registration must be received in Cambridge by June 1. The deadline for receiving all registration forms is June 15. Due to price increases by our caterer, it was necessary to raise the cost of two events this year, the Friday Night Supper and the Saturday Annual Banquet.



In order that we can accurately plan to accommodate all participants, preregistration is required for all events listed on the registration form, even those offered at no charge. As in the past, registration is not required for education programs, Bring & Brag, Glass Identification, and the Annual Meeting held following Breakfast on Sunday. Registration for the breakfast is required.

There is no registration fee for children under 10 years of age; however, they will not receive a registration packet or souvenir. Once again we are offering children's meals. Registration and prices for these are listed on the reverse side of the registration form.

If you wish a vegetarian meal or other special meal for medical reasons on Friday and Saturday nights, please make this known at the time you pick up your registration packet.

When completing your registration form, please indicate whether or not this is your first convention. The convention committee knows most members who regularly attend conventions but for infrequent attendees we do not want to guess. We do publish a list of attendees by city and state (no street address is given) and if you don't complete the address portion of the form, you may not be listed in your state.

It is strongly suggested that if you haven't already done so, make your motel reservations at once. The most affordable rooms are booked quickly. Motel information can be found in last month's *Crystal Ball*.

The golf outings are still tentative. Final word on this will appear in the June issue. Interested parties can call me during May for an update on this activity. Also note that the luncheon tentatively scheduled for Wednesday noon has been canceled.

The location for the Tuesday night dinner will be announced in the June issue.

Refer to your April issue for additional information on convention activities.

Cambridge or Bust - June 1998

Register NOW - Due by June 15
(To be eligible for Early-Registration Prize Drawing
- Registration must be received by June 1)

NATIONAL CAMBRIDGE COLLECTORS, INC.
25th ANNUAL CONVENTION - JUNE 1998
SILVER ANNIVERSARY
EVENT SCHEDULE - PRELIMINARY

TUESDAY, JUNE 23

9:00 a.m.	Golf Outing	Site to be announced
12:00 p.m.	Registration Desk Opens	Pritchard Laughlin Civic Center
6:30 p.m.	Founders' Dinner	Site to be announced

WEDNESDAY, JUNE 24

9:00 a.m.	Registration Desk Opens	Pritchard Laughlin Civic Center
9:00 a.m.	Golf Outing	Site to be announced
9:30 a.m.	Fenton Factory Tour Departs	Pritchard Laughlin Civic Center
11:30 a.m.	Fenton Factory Tour	Fenton Art Glass Co. Williamstown, WV
4:00 p.m.	Orientation Session - First Timers	Site to be announced
7:00 p.m.	Dessert Party/Reception - The First 100	Galleria - Pritchard Laughlin Civic Center
7:00 p.m.	Smith Auction Preview (Not sponsored by NCC)	Galleria - Pritchard Laughlin Civic Center

THURSDAY, JUNE 25

9:00 a.m.	Registration Desk Opens	Pritchard Laughlin Civic Center
10:00 a.m.	Smith Auction (Not sponsored by NCC)	Pritchard Laughlin Civic Center Galleria
4:00 p.m.	Orientation Session - First Timers	Conference Room - Pritchard Laughlin Civic Center
7:00 p.m.	Get Acquainted Picnic (full picnic meal served) Cash Bar	Pool Side - Best Western Motel

FRIDAY, JUNE 26

9:00 a.m.	Coffee With Cambridge	National Cambridge Collectors, Inc. Museum
9:00 a.m.	Registration Desk Opens	Pritchard Laughlin Civic Center
11:00 a.m.	Cambridge Glass Museum Tour	Bennett Cambridge Glass Museum
12:30 p.m.	Lunch With Cambridge	Bennett Cambridge Glass Museum Parking Lot
4:30 p.m.	Antique Show Opens	Exhibit Hall - Pritchard Laughlin Civic Center
7:30 p.m.	Convention Chairman's Reception - Cash Bar	Galleria - Pritchard Laughlin Civic Center
8:00 p.m.	Friday Night Supper	Galleria - Pritchard Laughlin Civic Center
9:00 p.m.	Mini-Auction	Galleria - Pritchard Laughlin Civic Center
TF	Pool Side Party	Deer Creek Motel

SATURDAY, JUNE 27

7:00 a.m.	Flea Market Opens	Beech Grove Family Development Center
11:00 a.m.	Antique Show Opens	Exhibit Hall - Pritchard Laughlin Civic Center
1:00 p.m.	Silver Overlay - David Fairbrothers	Conference Room - Pritchard Laughlin Civic Center
3:00 p.m.	Glass Identification - Lynn Welker	Conference Room - Pritchard Laughlin Civic Center
4:00 p.m.	Bring & Brag - Lynn Welker	Conference Room - Pritchard Laughlin Civic Center
6:30 p.m.	President's Reception - Cash Bar	Galleria - Pritchard Laughlin Civic Center
7:00 p.m.	Annual Banquet	Galleria - Pritchard Laughlin Civic Center
8:30 p.m.	NCC, This is Your Life	Theater - Pritchard Laughlin Civic Center
TF	Pool Side Party	Deer Creek Motel Pool

SUNDAY, JUNE 28

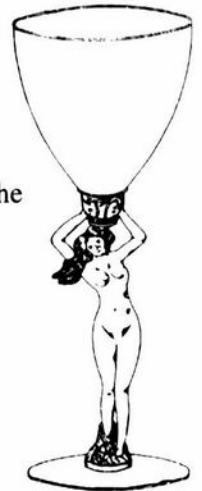
8:30 a.m.	Buffet Breakfast	Galleria - Pritchard Laughlin Civic Center
9:30 a.m.	25th Annual NCC, Inc. Meeting	Galleria - Pritchard Laughlin Civic Center
11:00 a.m.	Antique Show Opens	Exhibit Hall - Pritchard Laughlin Civic Center
1:30 p.m.	Cambridge Glass Co. Workers Reunion	Pritchard Laughlin Civic Center

NATIONAL CAMBRIDGE COLLECTORS, INC.

25th ANNUAL CONVENTION

JUNE 23 - JUNE 28, 1998

ADVANCE REGISTRATION FORM



Please complete this form and return it to be received no later than June 15, 1998. To be eligible for the early registration prize drawing your form must be received by June 1. Make your check payable to National Cambridge Collectors, Inc. and mail completed form and check to:

National Cambridge Collectors, Inc.
 Convention Registration
 P.O. Box 416
 Cambridge, OH 43725-0416

Each person registering for the convention must pay the registration fee of \$18.00 regardless of the number of events you plan to attend. The registration fee includes weekend admission to the NCC Inc. Glass Show, all of the no charge events, all educational events and entitles you to receive the Convention Booklet and the Convention Souvenir. You must register for all events you wish to attend, including those offered at no charge. For dealers in the NCC Inc. For Glass Show dealers participating in other convention activities, the registration fee is \$13.00 (regular registration fee less show admission charge). The benefits are the same.

Please list separately each person registering. Names should be given exactly as wanted on your name tags. Please provide your NCC, Inc. membership number and indicate if this is your first convention by writing yes or no under the "1st Conv." heading. If registering more than 3, list additional members of your party on the reverse.

NAME - PLEASE PRINT OR TYPE	MEMBER#	1ST CONV.
1. _____		
2. _____		
3. _____		

Address: _____

Street/P.O. Box	City	State	Zip
_____	_____	_____	_____

<u>Activity</u>	<u>Fee</u>	<u>How Many</u>	<u>Total</u>
Registration	\$18.00	_____	_____
Registration (Show Dealers)	\$13.00	_____	_____
Founders' Dinner	\$12.00	_____	_____
Fenton Art Glass Factory Tour	n/c	_____	n/c
Dessert Party/Reception - The 1st 100	n/c	_____	n/c
Thursday Evening Picnic	n/c	_____	n/c
Coffee with Cambridge	n/c	_____	n/c
Lunch with Cambridge	n/c	_____	n/c
Friday Night Supper	\$10.00	_____	_____
Saturday Night Banquet	\$19.00	_____	_____
Sunday Morning Buffet Breakfast	\$ 7.00	_____	_____
Total			_____

1998 CONVENTION REGISTRATION FORM - PAGE 2

ADDITIONAL REGISTRANTS

NAME - PLEASE PRINT OR TYPE

MEMBER #

1ST CONV.

4. _____

5. _____

6. _____

REGISTRATION - CHILDREN UNDER TEN

No. for Friday Supper: _____ @ \$5.00 _____

No. for Banquet: _____ @ \$10.00 _____

No. for Sunday Breakfast: _____ @ \$4.00 _____

Total _____

If you would like to assist the Convention Committee during Convention, check here, _____

For Information Purposes Only

I plan on attending the Smith Auction: Yes _____ No _____

SENECA MORGANTOWN BEAUMONT

9th Annual Convention

Old Morgantown Glass
Show & Sale

Featuring "Morgantown" & Other Glassware of A Bye-Gone Era

June 12, 13, & 14, 1998
St. Mary's Peace Hall, Star City
Morgantown, West Virginia
(I-79 Exit 155 1 mile)

Friday 6 pm -9 pm — Premier Show & Sale
\$10.00 Special Admission

Saturday 9 am - 5 pm — Show & Sale
10 am - 12 pm — Former Workers Reception
1 pm — Educational Seminar
6:30 pm — Convention Banquet*
*Advance Reservations Required at
P. O. Box 894, Morgantown, WV 26507-0894
or phone (304) 292-9400

Sunday 12 noon - 4 pm — Show & Sale

Dealer Inquiries: Jim Leasure, (412) 225-8445

\$3.00 General Admission (Good Sat. & Sun.)

Public Invited To All Events *Parking At Door*

PHOENIX CONSOLIDATED LOUISIANA



Stems Without Thorns

As the world's largest supplier of discontinued and active china, crystal, flatware and collectibles, Replacements, Ltd. has over 325 different patterns of Cambridge crystal.

And however much we enjoy selling pieces which were once thought irreplaceable, we love buying them as well. Thanks to people like you, our crystal inventory currently numbers in the hundreds of thousands, and the numbers keep growing every year.

So, if you've been unsuccessfully searching for that elusive piece of Cambridge - or any other type of fine crystal - call us for a free list of pieces available in your pattern. And, if you're looking to sell pieces you currently have, we can help you there, too.

REPLACEMENTS, LTD.

China, Crystal & Flatware • Discontinued & Active

1-800-REPLACE
(1-800-737-5223)

1089 Knox Road,
PO Box 26029, Dept. CB,
Greensboro, NC 27420

The **DAZE** Inc.

SPECIAL OFFER
to NCC friends
\$2.00 OFF
the 1 year subscription price
when on this form or copy of it.

The Original National monthly newspaper dedicated to the buying, selling and collecting of American made glassware china, and pottery from this century. We educate and inform you each month with feature articles by top notch writers, readers letters, club happenings, reproduction news, show reports and there are hundreds of dealers to help you fill in the missing pieces of your collection. "Keep up with what's happening" . . . Subscribe today!

Name _____
Street _____
City _____
State _____ Zip _____

1 year \$21.00 2 years \$40.00 \$2.00 Single Copy

Subscription Hot Line: 1-800-336-9927

Exp. Date _____ Card No. _____
Signature _____

Orders to:
The Daze, Inc., Box 57, Otisville, MI 48463

Please allow 30 days for your first issue - Canadian Subscribers, add \$1.00 per year and subscribe by charge card only! This Special Offer may not be combined with any other special offer
Offer Expires December 31, 1998

BALLOT ON THE BACK

PLEASE VOTE NOW!!

(FINE ARRANGEMENT - Continued from page 8)

HERON

- 1930 - 1934 Catalog Reprint page 94 (page J)
Shows the 12" with Style 2 base
 - 1940 Catalog Reprint page 455
Shows 9" with Style 3 base
 - 1949 - 1953 Catalog Reprint
Shows 9" Milk with Style 3 base
- (Unable to locate a catalog picture of 12" Heron with Style 3 base)

BLUEJAY

- 1940 Catalog Reprint page 455
Shows Style 3 base

SEA GULL

- 1940 Catalog Reprint page 455
Shows Style 2 base
Reproduced by Imperial

MELON BOY

Unable to locate any printed information to confirm this as Cambridge;
however, the colors and base shape would likely make this Cambridge.
Examples seen have a Style 2 base

Having looked at some patent information, then feasted our eyes on our display, we went from the specs to the spectacular! The flower arrangers are most elegant and would add beauty and originality to any table. Our club display was grand to say the least. A program cannot be put together without everyone's contribution and so I say "bouquets to the members for helping." Then we'll take those bouquets, choose a Cambridge flower holder and say:

"This is a Fine Arrangement"

National Cambridge Collectors, Inc.

Below is your ballot and slate of nominees presented for election to the NCC Board of Directors. Positions are being made vacant by expiration of terms. Biographies may be found on pages 14 and 15 in this issue (the May 1998 issue) of the *Crystal Ball*.

Please mark your ballot and return it to: **BALLOT, National Cambridge Collectors, Inc., PO Box 416, Cambridge, OH 43725-0416.** Ballots must be received by June 15, 1998.

OFFICIAL BALLOT
Vote for no more than three (3)
(terms will expire in 2002)

- ___ John Corl
- ___ Michael G. Neilson
- ___ George Stamper
- ___ Charles A. Upton
- ___ Lorraine Weinman

VALIDATION # _____

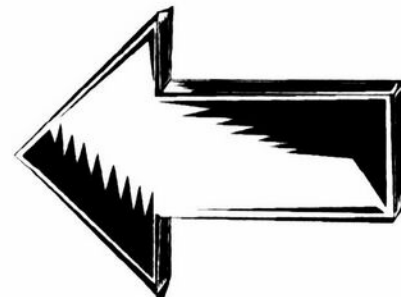
CUT OUT BALLOT (PHOTOCOPIES ARE NOT ACCEPTABLE). MARK THE BALLOT AND RETURN IT TO:

BALLOT
NATIONAL CAMBRIDGE COLLECTORS INC
PO BOX 416
CAMBRIDGE OH 43725-0416

BALLOTS MUST BE RECEIVED BY JUNE 15.

DO NOT INCLUDE OTHER ITEMS IN YOUR BALLOT ENVELOPE. THEY WILL NOT BE OPENED UNTIL JUST PRIOR TO THE CONVENTION.

BALLOT



(QUARTERLY MEETING MINUTES - Continued from page 5)
cabinets and supplies. Carl also mentioned that money was saved in the snow-plowing budget this season.

Museum Interior: Marybelle Teters reported that all of the glass is cleaned except for two cases. All the donation paperwork is done, and the cash donation letters went out on January 31. The glass donation letters will be out soon.

Non-Glass Items: Tarzan Deel reported that he has been working on the accounts payable records and that Kelvin Moore has been working on journal books from the paper room and putting the information into a spreadsheet. They are going through tons of large bound ledgers to do this.

Nominating: Joy McFadden reported that the three terms which will expire are for Charles Upton, Mark Nye, and Joe Andrejcek, and that both Mark and Joe will not be running. Five names have been selected to run: John Corl, Mike Neilson, George Stamper, Charles Upton, and Lorraine Weinman. The floor was opened for additional nominations, but there were none. A motion was passed to approve the slate offered by the Nominating Committee. Those selected were asked to put together a brief biography to be published in the May issue of the *Crystal Ball* along with the ballot. Ballots will not be counted until Convention week and the results will be announced Friday evening. New officers elected will become active immediately after the conclusion of the Sunday morning quarterly meeting. Everyone is encouraged to get their ballots in!

Projects: Bill Hagerty reported that 375 pairs of salt and pepper tops have been sold, out of the 500, and they are prepared to make more. An ad had been placed in *The Daze* but had no response. Bill plans to put an ad in the *Heisey News* since the tops will fit some Heisey salt and pepper shakers.

The members present were polled for input on a new project for a poster of the Cambridge factory layout. It would be from the one that is mounted in the Museum that looks like a floor plan. Mark Nye pointed out that it is actually the insurance plan or fire-fighting plan. It will cost us \$1,150 to print 250 copies. Each copy would be numbered and would be labeled as a Silver Anniversary promotion, and would be priced around \$20-30 each. The first 10 will be signed by Mary Martha Mitchell and will be auctioned off. (The first five at this year's mini-auction.)

Publications: Mark Nye reported that he is about finished with pricing the *1949-1953 Catalog Reprint*. Please see Mark if you can help with prices for *Cambridge Rose Point*, and the *Cambridge Caprice* book will be next. Members do not have to buy a new book to get a price guide. We are allowed to sell the updated price guides to members, and they are available at the Museum or through the mail. Mark also reported that book sales have been very good.

Publicity: Cindy Arent announced that show cards and posters are available, and she requested that we please distribute them at antique malls.

Technology: Tarzan Deel reported that he will soon have a comprehensive plan for software that will fit more of our needs.

Study Groups: Pam Earussi of the Elegant Glass Collectors, study group of the NCC, had asked the promoter of the Harrisburg, PA, Eastern National Antiques Show and Sale if the NCC could do something at the show, and he gave us a free booth with two tables and showcases! A team led by John Corl of Harrisburg is looking for volunteers. This is a three-day show, April 24-26.

1998 Convention: Mark Nye had a lot of good things to say about our 1998 Convention. This will be our 25th Convention, and the theme will be Silver. A tentative schedule will be in the next issue of the *Crystal Ball*. Mark is planning for golf on Tuesday and maybe Wednesday. On Tuesday there will also be a dinner honoring the founders of the NCC. Wednesday will have a Fenton Factory tour and possibly a luncheon. On Wednesday night there will be a dessert party at the Pritchard Laughlin Civic Center, Cambridge, Ohio, with a reception honoring lifetime members and the first 100 members. Phyllis Smith will have an auction preview. Thursday will be Phyllis' auction of part of her and her late husband Bill's collection of Cambridge glass. Thursday night will also be the usual get-together at the Best Western pool with a full picnic meal. Friday will feature Coffee with Cambridge at the NCC Museum in the morning, and Lunch with Cambridge at the Bennett Museum. Harold and Judy Bennett are opening their Museum to NCC members at no charge. On Friday the NCC Glass Show and Sale opens. Friday evening will have a dinner, the mini-auction, and a new Poolside at Deer Creek, like we used to do at the Shenandoah. On Saturday afternoon, David Fairbrothers, from New Jersey, will speak on silver overlay. Saturday evening, the annual banquet will feature "NCC, This is Your Life," an overview of the first 25 years. Mark will be asking a number of people to speak for 3-5 minutes each. Willard Kolb brought up the subject of donations for the souvenir booklet. Can anyone donate \$100 to cover expenses? Anyone who donates will get credit in the booklet. The Convention is Tuesday, June 23, through Sunday, June 28. Make reservations now! The *Crystal Ball* lists motels and rates.

1998 Auction: Lynn Welker said, "Tomorrow!"

1998 Glass Show: Mary Beth Hackett and Joy McFadden reported that the contracts were out and a dozen have already come back. Rick Jones wondered why he had just received his on Wednesday, but they were all mailed on the same day.

1998 Flea Market: Bud Walker reported that it is no

(Continued on page 18)

NOMINEES FOR BOARD

Your 1998 Nominating Committee presents for your consideration the following biographies for each nominee seeking to be elected to the NCC Board of Directors. The three (3) elected will serve on this board for the next four (4) years, until 2002. They are listed alphabetically here. Please follow the instructions on your **ballot** (attached on **page 14** of this issue of the *Crystal Ball*).



John Corl: John was born and has lived his entire life in Harrisburg, PA. He is single and presently shares an apartment with his Cambridge glass collection and his "Guard Cat," Growtigger. He attended Harrisburg Community College, majoring in business administration and retail management. John is presently employed as a sales and customer service rep. for a construction equipment company, Ingersoll-Rand Equipment, in the Harrisburg area.

John became a member of NCC in 1994. Since then, he has attended every NCC convention and the annual glass auctions. John says, "I have met the most wonderful group of people directly through attending these NCC sponsored events."

John is currently a member of the Elegant Glass Club study group, helping to coordinate NCC glass and book displays at the Great Eastern Antique Show held twice a year in Harrisburg. It was at one of those shows where he first fell in love with Cambridge glass. He purchased a Royal Blue with Crystal keyhole-stem comport. "The dealer suggested I purchase a few of the books offered by the club for future reference. These books and my newly acquired membership in NCC started

me well on my way to a collection of Royal Blue pieces. Later, I started branching off into the other "Blues" that were manufactured by the Cambridge Glass Co." Moonlight Caprice, Willow Blue Decagon, and the early Cobalt Blue colors are of particular interest as well.

Joining NCC has meant quite a bit to him. "My membership in NCC has offered me the opportunity to develop, to nurture, and to maintain the most wonderful and true friendships a person could ever hope to have in his lifetime! I consider it a great honor to be nominated. NCC has a great membership that has a large storehouse of information, knowledge, and camaraderie to offer. One of my goals will be to reach out to new members, as well as to potential new members, and make them feel that they are a significant part of NCC. After all, we all have one important interest in common, 'Our love of the glass that was produced by the Cambridge Glass Co.'

"I would like to throw out a challenge to my fellow co-members. Let's keep Jeff Ross so busy with processing new memberships, he'll be begging for an assistant to help him keep up. NCC has a wonderful potential through its membership. I consider this nomination to be an opportunity to give something back to NCC for NCC has given so much to me in the last five years."



Michael G. Neilson: Since the wee age of 10, Michael has been involved in the admiration and collection of Cambridge Glass. His mother and grandmother would take him along to auctions where he collected pencil dogs, while they collected other Cambridge Glass items. His interest in Cambridge Glass heightened while covering the annual convention for the *Daily Jeffersonian* newspaper. In 1994 the admiration, like for so many others, became an "addiction" and an ongoing fascination.

Michael was born in Cambridge, Ohio, and graduated from Cambridge High School. His love of photography landed him a job as chief photographer at *The Daily Jeffersonian* during the 1980s. Michael has won numerous awards for his photography from The Associated Press as well as many private organizations. He is a current board member of The Degenhart Paperweight and Glass Museum, a member of the Cambridge Lions Club, a member of the Cambridge Cordials study group, attends Second Presbyterian Church, and a past member of the Ohio Newspaper Photographers Association. Michael, along with his wife, Lisa, joined NCC in 1994. Together they

serve as circulation directors for the *Crystal Ball* newsletter. Michael also takes photos of club events for publication in the *Crystal Ball*.

Since joining the NCC, Michael has attended numerous glass shows across the country talking with others and promoting Cambridge Glass and the NCC. He has encouraged many friends to become members and appreciate the world-famous Cambridge Glass Company. A thank you to Lynn Welker and Rich Bennett. Their friendships have taught him valuable essentials about the many patterns, colors, shapes, and history of Cambridge Glass. Rarely does a day go by in Michael's life when a conversation about Cambridge Glass doesn't arise. All his family has to do to get his attention is to mention the words Cambridge Glass.

Michael resides in Cambridge with his wife, Lisa, and their children, Tiffani and Eric.

As a board member, Michael would like to help add to the continued success of the club, its members, and its future. Nomination for this position is an honor.

(Continued on page 17)

(NOMINEES - Continued from page 16)



George Stamper: George is "hooked on Cambridge," and as Georgia Otten said in a recent *Crystal Ball* article, he "talks 'Cambridge' to anyone and everyone who will listen."

Having four grown children and four grandchildren, George and wife Bev found themselves wanting something to do to replace attending their children's band concerts, drill team competitions, and softball, basketball, and volleyball games. Bev started collecting cream and sugars on trays and found her favorite to be something called "Cambridge Caprice." George said, "Why just cream and sugars? Let's collect all of those 'Caprice' pieces!"

Now they are hooked ... Attending their first "Show and Sale" in Cambridge, they met Phyllis Smith who talked to them about NCC membership. Phyllis later insisted they visit the Miami Valley Study Group meetings where they found that there was so much to learn, and they knew so little. George joined the NCC in 1992 and has been president of the Miami Valley Study Group for the past two years.

Highlights for George have been the experience of being on the editing staff for the *Etchings by Cambridge* book, meeting NCC members from all over the United States, and the growth of their study group. George feels that the growth of the NCC means increasing the national membership and that he and all members need to promote the NCC by "talking 'Cambridge' to anyone who will listen." Serving on the NCC Board of Directors would be George's way of thanking all of the NCC members who have been so helpful to him.

George is a tool room supervisor with a Springfield, Ohio, firm. He and his wife Bev reside in West Milton, Ohio.



Charles A. Upton: Charles and his wife, Mary Alice, live about six miles north of Cambridge. They have three married daughters and six grandchildren. He is a high school graduate and served in the U.S. Army three years during the Korean Conflict.

He is a retired grocery store manager and in his retirement has become an advanced collector of Cambridge Glass, collecting the unusual and different production items. Charles is also interested in genealogy and collecting old pictures and history of Guemsey County, Ohio, where he lives. He is an active member of the Mt. Hermon Presbyterian Church near his home and a member of the Lodge #66 F. & A.M. and Scottish Rite 32 degree.

Charles is a co-founder of NCC and served as the first president, board of directors, and as vice president. A member for 25 years (Membership # 2), he served on the original Museum Committee and served on the Ballot Committee several years, also served as Antique Show chairman in 1981, Program and Entertainment Committee chairman several years, By-laws Committee, Budget and Finance Committee, and more recently has served as treasurer since November 1994, and as corresponding secretary since July of 1995. Charles has attended every NCC Convention except one.

Charles says, "I feel that I would like to serve on the NCC Board of Directors again to give continued, positive insight into the future of the NCC. I want to continue helping develop a sound financial base for this organization. I feel that I have helped contribute to better investing and have helped develop a diversified portfolio of our members' contributions."



Lorraine Weinman: Originally from western Pennsylvania, Lorraine now makes her home in Cambridge, Ohio, with her very active 7-year-old son, Chase. A graduate of Edinboro University of PA and California University of PA, she is now teaching high school Spanish and has previously taught as a reading specialist. Lorraine has also worked as a freelance proofreader for several court reporters and an advertising agency, and as a freelance editor. At one time she worked for a public relations firm where she did radio and newspaper advertising for several malls and four state pageants, preliminaries to the Miss USA pageant.

Lorraine is currently the editor of the NCC *Crystal Ball*. She is also a member of the Cambridge Cordials study group.

Lorraine's appreciation of Cambridge Glass was first realized at an auction. Although she did not have the winning bid on the pair of Cambridge candlesticks, she soon received a similar pair as a housewarming gift. A collection was begun! A new collector was born! In the late '80s, Lorraine joined NCC and found a mission ... to locate Cambridge "bargains" and bring them "home" to

Cambridge, Ohio.

In her 10 years of NCC membership, Lorraine has enjoyed watching, learning, and growing. There is so much to learn about Cambridge Glass. "I have met so many wonderful people, and have learned so much from them about Cambridge Glass. NCC has a lot to offer to everyone and each member has so much knowledge to share. I hope and try to share with others my love of Cambridge Glass."

Wanting to contribute even more as a board member, Lorraine is honored to have been nominated.

~ GLASS ~ MARKETPLACE

Classifieds

WANTED: Rare or unusual pieces of Cambridge Glass especially Opaques or Carnival. Also Cambridge Art Pottery. Top prices for outstanding pieces. **Call collect 609-965-2413.**

WANTED: Pink Cambridge Etching #703, stemware, plates, cups, tumblers, etc. **Linda Kaiser, 158 Pointe Vintage Drive, Rochester, NY 14626-1759, 716-227-2991.**

(QUARTERLY MEETING MINUTES - Continued from page 15)
longer a flea market. The two finalists for the new name were: "NCC Saturday Glass Scramble" and "NCC Glass Dash." Club members present at the meeting voted for "NCC Saturday Glass Dash." Many contracts have come in, we are filled up and there will probably be some dealers in the hall.

Webmaster: Don Stevens as our Webmaster has been added as a new committee/person. We are approaching close to 2000 visits to our site, and our website has been rated as one of the best websites out there.

With no old or new business to discuss, the meeting was adjourned at 8:35 p.m. so we could move on to the nice Show and Tell and Auction Preview.

Salt & Pepper Tops For Sale

Plastic tops to fit most Cambridge, such as Rosepoint ftd. and flat-bottom shakers. Also fit Heisey Rose, Saturn, Plantation, Crystalite and some Orchid.

Fit some Anchor Hocking and Candlewick.
(CAUTION - do not force on as they will crack)
Made of polycarbon, the same material used to make taillight lenses for autos.

Price: 1 to 9 pairs @ \$6 per pair
10 or more @ \$5 per pair

ON SALE NOW AT THE NCC MUSEUM
Please add \$3.00 for shipping & handling.

Attention NCC Convention Visitors



The Degenhart Paperweight and Glass Museum features numerous rare pieces of Cambridge Glass as well as other companies. Stop by for a tour while you're in Cambridge. Located at the intersection of U.S. 22 and I-77. Open daily.

WE CLEAN CLOUDY GLASS! SATISFACTION GUARANTEED

Yes, it is true that we really can restore the interior of your cruet, vase, decanter and other internally etched items back to near original condition!

We do not oil, wax or cover up the sickness in any way! We actually remove it.

No items are too sick to clean! If we cannot clean an item to meet your satisfaction, the cleaning is FREE!

Send no money up front. When we return your item a bill will be enclosed for the postage and cleaning. If you are not satisfied, only the return postage is requested.

Most items clean in 6-8 weeks. All glass is handled and cleaned at your risk. Some very cloudy items may take several additional weeks.

Cruet	\$20.00	Cocktail Shaker	\$30.00
Vinegar & Oil	\$25.00	Salt Shaker (one)	\$25.00
Cologne	\$20.00	Salt Shaker (pair)	\$35.00
Decanter	\$30.00	Water Bottle	\$30.00
Vases (under 12")	\$25.00	Lavender Jar	\$20-30.00

Ship to: **Kim Carlisle & Associates**
28220 Lamong Road, Dept. C
Sheridan, IN 46069
(317) 758-5767

DEALERS



DIRECTORY

NOTE: When writing to the dealers listed here, please enclose a SASE!

<p>DAUGHERTY'S ANTIQUES Jerry and Shirley</p> <p>Antiques and Collectibles * Mostly Glass</p> <p>Shows & Mail Orders 2515 Cheshire No. 402-423-7426 Evenings Lincoln NE 68512</p>	<p>"HAPPINESS IS" Buddy and Kathy Stultz</p> <p>3106 Warren Court, Glen Allen, VA 23060 804-672-8102</p> <p>Specializing in American Made Glass We Buy & Sell, Shows & Mail Order</p>	<p>THE JONES GROUP Cindy Jones</p> <p>Buy and Sell Cambridge Glass</p> <p>650 Riverside Drive Sleepy Hollow, NY 10591 914-631-1656 or E-Mail Caprice0@aol.com</p>
<p>Milbra's Crystal Buy & Sell Replacement and Matching Specializing in Cambridge Milbra Long (817) 645-6066 Fostoria Emily Seate (817) 294-9837 Heisey PO Box 784, Cleburne, TX 76033 and others E-mail: longseat@flash.net</p>	<p>YOU CAN ADVERTISE YOUR ANTIQUe SHOP HERE!</p>	<p>YOU CAN ADVERTISE YOUR ANTIQUe SHOP HERE!</p>
<p>THE GLASS URN 456 West Main Street, Suite G Mesa, AZ 85201 602-833-2702</p> <p>Mail Order Shows Open Shop</p> <p>CAMBRIDGE, FOSTORIA, HEISEY, ETC.</p>	<p>ANTIQUES ON THE MALL SPECIALIZING IN CAMBRIDGE GLASS</p> <p>Bogart's - Bldg #3 - Norwich, OH</p> <p>Virginia Bennett 740-432-4483 64183 Warne Drive, Cambridge, OH 43725</p>	<p>GATEWAY ANTIQUE MALL, INC. JUST NW OF MINNEAPOLIS-ST PAUL, MN Next to Super 8 in Rogers, MN (I-94/101 Intersection)</p> <p>85 Dealers 7 Days, 10-6 612-428-8286 ELAINE STORCK, OWNER/DIRECTOR</p>
<p>THE DEGENHART PAPERWEIGHT AND GLASS MUSEUM, INC.</p> <p>P O Box 186 Cambridge, Ohio 43725-0186 Intersection of US 22 & I 77 Phone 614-432-2626</p>	<p>D & D ANTIQUES</p> <p>Columbus, Ohio</p> <p>Dick Slifko SHOWS ONLY</p>	<p>JAMESTOWN ANTIQUES 16 E. Washington St., Jamestown, OH 45335</p> <p>Rosepoint and Cambridge our Specialty Shows and Shop (chance or appt.)</p> <p>Buy (937) 675-6491 Sell Susan and Larry Everett</p>
<p>THE GLASS CUPBOARD</p> <p>P O Box 652 West End, North Carolina 27376</p> <p>Marcia Ellis Cambridge, Heisey 910-673-2884 Shows, Mail Order</p>	<p>JUDY'S ANTIQUES Judy Bennett 422 S Ninth Street (Corner of Jefferson) Cambridge, Ohio 43725 Bus 740-432-5855 Res 740-432-3045</p> <p>CAMBRIDGE GLASS MY SPECIALTY</p>	<p>We Buy Cambridge</p> <p>Kelvin and Heather Moore</p> <p>810 Red Mill Drive Tecumseh, MI 49286 Phone 517-423-0993</p>
<p>FINDER'S ANTIQUE HOUSE 3769 Highway 29 North Danville, VA 24540 (804) 836-6782 Cambridge-Heisey-Duncan-Fostoria</p>	<p>GREEN ACRES FARM 2678 Hazelton Etna Rd., Pataskala, OH 43062 (State Route 310 North)</p> <p>Sat & Sun 1-7 PM 614-927-1882 Antiques, Crystal Glass and Collectibles</p>	<p>CRYSTAL LADY 1817 Vinton St., Omaha, NE 68108</p> <p>Bill, Joann, and Marcie Hagerty</p> <p>Bus 402-341-0643 Res 402-391-6730 Specializing in Elegant Glass & Collectibles</p>
<p>YOU CAN ADVERTISE YOUR ANTIQUe SHOP HERE!</p>	<p>YOU CAN ADVERTISE YOUR ANTIQUe SHOP HERE!</p>	<p>PENNY COURT MALL 637 Wheeling Avenue Cambridge, Ohio</p> <p>100 Booths 15,000 sq. ft.</p> <p>HOURS: Daily 10-6 Sunday Noon-5 Closed: Easter, Thanksgiving, Christmas Call for Other Holiday Hours 740-432-4369</p>
<p>MICHAEL KRUMME Cambridge and other elegant glassware</p> <p>(213) 874-GLASS e-mail: mkrumme@pacbell.net website: http://www.glassshow.com</p> <p>PO Box 48225 Los Angeles CA 90048-0225 Send your want list</p>	<p>Warren and Mary Welsh Cambridge & Other Elegant Glassware</p> <p>3635 Saddle Rock Rd., Colorado Springs, CO 80918 (719) 531-5866 WELS@EARTHLINK.NET</p> <p>MAIL ORDER SHOWS</p>	<p>MARGARET LANE ANTIQUES</p> <p>2 E. Main St., New Concord, OH 43762 Lynn Welker 740-826-7414</p> <p>Cambridge Glass Matching Service Hours Mon-Fri 10-12 AM, 1-5 PM or by Appointment</p>
<p>ISAACS ANTIQUES (740) 826-4015</p> <p>See our booths in Penny Court Mall in Cambridge and East Pike Antique Mall at Rt. 40, one mile west of I-70 Norwich Exit #164</p>	<p>ALADDIN LAMP BOOKS Free List Figurine Lamps Wanted Bill & Treva Courter</p> <p>3935 Kelley Rd. Kevil, KY 42053 Phone/FAX 502-488-2116</p>	<p>DEXTER CITY ANTIQUE MALL</p> <p>P. O. Box 70, Dexter City, Ohio 45727 (740) 783-5921</p> <p>Located on Ohio St. Rt 821 Between Exits 16 & 25 off I-77 Just 30 min. South of Cambridge, Ohio</p>

AUCTION

All Cambridge Glass and Related Items

from the Private Collection of

Phyllis and (the late) Bill Smith

Thursday, June 25th - 10:00 a.m.

Doors Will Open at 9:00 a.m.

Pritchard Laughlin Civic Center — In the Galleria
Glenn Highway (US 40 W at I-70) Cambridge, OH

FOOD WILL BE AVAILABLE

Auctioneer: Craig Connelly

Owner: Phyllis Smith

Auction Catalogs will be available on or before May 1st - Send large, 55-cent SASE
Phyllis D. Smith, 4003 Old Columbus Road, Springfield, OH 45502-8802
Phone: (937) 323-3888

National Cambridge Collectors Inc

PO Box 416

Cambridge OH 43725-0416

<http://www.cambridgeglass.org>

e-mail: NCC_Crystal_Ball@compuserve.com

FIRST CLASS MAIL

U.S. POSTAGE

PAID

PERMIT NO. 1

CAMBRIDGE, OH

FIRST CLASS MAIL

Membership Renewal Notice

If the date on your address label is 5-98,

this is your LAST ISSUE of the Crystal Ball.

Please take a moment and renew now. Thank you!