

Cambridge Crystal Ball



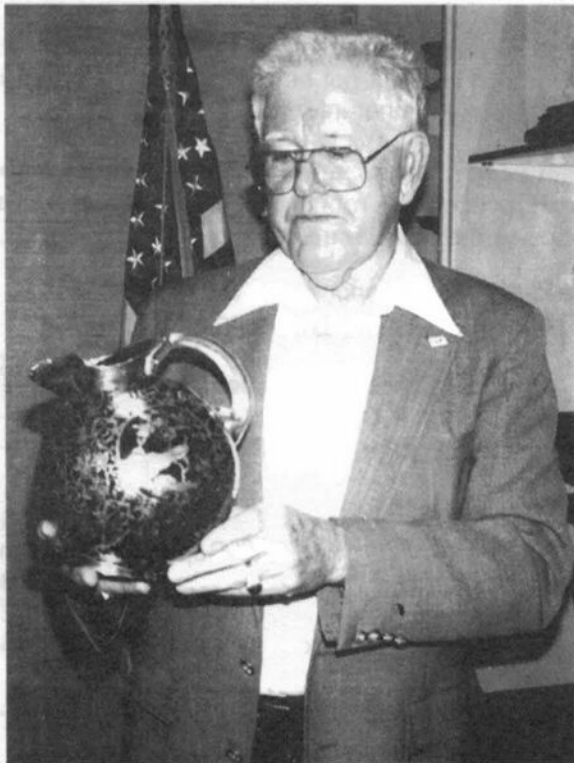
Published monthly by National Cambridge Collectors, Inc.
to encourage and report the discovery of the elegant and boundless product of the
Cambridge Glass Company of Cambridge, Ohio

Issue No. 302

June 1998

NCC "Silver Anniversary" Convention Speaker Dr. David E. Fairbrothers

by Mark Nye, Convention Chairman



David E. Fairbrothers was born and raised in Absecon, New Jersey. He graduated from Pleasantville High School and after a tour of Army duty, obtained his undergraduate degree from Syracuse University. Mr. Fairbrothers then went to Cornell where he earned his master of science and Ph.D. degrees. Dr. Fairbrothers obtained a teaching position at Rutgers University, became a professor of biological sciences and retired from this institution after 40 years of service. Dr. Fairbrothers' professional field of expertise was and continues to be botany. Even in retirement he continues to research early writings pertaining to the flora of colonial times.

An ancestor of Dr. Fairbrothers on his mother's side, Jacob Freas (also spelled Freis), came from Heidelberg, Germany, in the middle 1700s to work at Caspar Wistar's glassworks in Alloway Township, Salem County, New Jersey. Founded in 1739, the Wistar glassworks was the first in America to operate successfully over a long span of years.

Dr. David Fairbrothers' study of silver overlay on glass had its roots some 12 years ago in silver decoration on hat pins, his initial interest. He soon began studying silver on perfume bottles and atomizers. This led to a general interest in silver overlay on all types of glass objects and today he has become a recognized authority in this field.

Inside This Issue:

25th Celebration of Community
Directions Around Cambridge, Ohio
Diane, A Second Look
Repros & Logos
Convention 1998 Silver Anniversary Update
The Controversial Near Cut Water Set

**Register NOW ...
Convention Registrations Must Be
Received In Cambridge By June 15 !**

Cambridge Crystal Ball

Official publication of National Cambridge Collectors Inc., a non-profit corporation with tax exempt status. Published once a month for the benefit of its members. All rights reserved; reproduction in whole or in part without written permission of NCC and the author is prohibited.

Membership is available for individual members at \$17.00 per year and an additional \$3.00 for associate members (12 years of age and older, residing in the same household). Of the master member dues, \$12.00 is credited to a one-year subscription to the *Crystal Ball*. All members have voting rights, but only one *Crystal Ball* per household. **Multi-year memberships are available: 2 years for \$33.00, 3 years for \$49.00.**

1997-1998

OFFICERS AND COMMITTEE CHAIRPERSONS

President	Richard D. Jones
Vice President	Mark A. Nye
Secretary	Lynne Verbsky
Treasurer	Charles Upton
Sergeant-at-Arms	Tarzan Deel
Acquisitions	Kelvin Moore
Budget & Finance	Dennis Snyder
By-Laws	Bud Walker
Corresponding Secretary	Charles Upton
Technology	Tarzan Deel
Membership	Jeff Ross
Museum Expansion/Relocation	Willard Kolb
Museum Facilities	Carl Beynon, Joe Miller
Museum Interior	J.D. Hanes, Marybelle Teters
Non-Glass Items	Tarzan Deel
Nominating	Joy McFadden
Program	Bill Hagerty
Projects	Bill Hagerty
Publications	Mark A. Nye
Publicity	Cynthia A. Arent
Study Group Advisor	Marybelle Teters
1998 Convention	Mark A. Nye, Bud Walker
1998 Auction	Lynn M. Welker
1998 Glass Show	Mary Beth Hackett, Joy McFadden
1998 Glass Dash	Bud Walker
<i>Crystal Ball</i> Editor	Lorraine Weinman
<i>Crystal Ball</i> Circulation Directors	Lisa and Mike Neilson
WebMaster	Don Stevens

Internet website: www.cambridgeglass.org

National Cambridge Collectors Inc. owns and operates the **Museum of Cambridge Glass** at 9931 East Pike Road, Cambridge, Ohio. Open April through October 9AM-4PM Wednesday through Saturday and Noon-4PM on Sunday. March open Friday-Sunday. Closed November-February, Easter, July 4th.

ADVERTISING RATES

Display Rates (camera ready ads preferred)

Unit	Members	Non-Members
Full Page	\$45.00	\$60.00
3/4 Page	\$35.00	\$50.00
1/2 Page	\$25.00	\$35.00
1/4 Page	\$15.00	\$25.00
1/8 Page	\$10.00	\$15.00

Classified Rates

10 cents a word \$2.00 minimum

Abbreviations and initials count as words. Type sizes cannot be mixed in classified ads. **Payment in full must accompany all ad copy.** Contact Editor for copy assistance.

Dealer Directory

Six Line Maximum \$24.00 for 12 month contract

Also included - Listing on our Internet site at:

www.cambridgeglass.org

Cambridge *Crystal Ball* assumes no responsibility for items advertised and will not be responsible for errors in price, description, or other information.

Advertising copy, letters, articles, must be received by the 5th of preceding month to be considered for publication in the next issue.

Please address all correspondence (include SASE) to:
(or E-Mail NCC_Crystal_Ball@compuserve.com)

National Cambridge Collectors, Inc.
P.O. Box 416
Cambridge, OH 43725-0416

President Rick Jones	914-631-1656
	or E-Mail Caprice0@aol.com
Vice President Mark Nye	517-592-3578
Secretary Lynne Verbsky	216-661-7382
NCC Museum: Phone and Fax	740-432-4245

Please notify us immediately of any address change.

Opinions or information stated in any signed article or letter printed in the *Crystal Ball* are those of the author and may not agree with National Cambridge Collectors, Inc. The Editor reserves the right to refuse and to edit any material submitted for publication to conform to the editorial style of the *Crystal Ball*. Members are encouraged to write to NCC and the *Crystal Ball* sharing their knowledge and questions!

President's Message



25th Celebration of Community

This month marks the 25th gathering of Cambridge collectors at an annual convention. The founders of the club began this tradition in the first year of the club's existence and it has continued every year since. A remarkable achievement.

A respect for our history and the hard work of our early members is important as we face this milestone. I say this as a "second" or "third" generation member having joined NCC in the mid-'80s. It is also with the knowledge that in the past few months NCC has welcomed many new members.

Recruiting and maintaining members are both critical to insuring the health of our organization. It is very pleasing that we are seen as a club with momentum and have a new and eager membership coming onboard at the very time we salute those who have built the club and stayed with the club.

Over the last few years, Jeff Ross has spent a lot of time surveying people who let their membership lapse. It's important to know why expectations were not met so that we may continue to add member benefits while achieving our goals of fellowship and preservation.

More times than not, the results to the surveys said people didn't learn enough about their specific pattern or they were too far away from Cambridge to derive the benefits of Convention or the Museum. These are very real and important concerns.

So as we prepare to celebrate our past this month, it is also important to bear in mind our future and officially welcome all of you who have joined our organization since our last convention. It continues to come into sharper focus that our club is a living, breathing organism that is only as good as the sum of our parts.

It begins and ends with the heart and soul of our membership. What do they look to the club to do for them and what in turn can they do to make the experience fulfilling and beneficial to all.

There are many benefits of membership. It starts with what we might call the "hard" benefits: the monthly *Crystal Ball*, the discount on books, free passes to the Museum, the Website, study groups, annual Auction, and the Convention among other things.

It also contains what could be called "soft" benefits: the fellowship, the networking, making new friends, finding answers to questions, learning from those members so free to give of their vast knowledge, getting better senses of value for pieces you might collect, being inspired to collect new things, respect for the preservation mission and museum knowing that it helps protect the value of your investment.

There is another benefit for which I have deep respect, that for lack of a better term, I'll call "The Legacy." When we first joined the club as avid Caprice collectors, there was no Caprice book. We relied heavily on the NCC catalog reprints to help ID pieces. We shouldn't forget that volunteers created these books and we owe them a lasting debt.

There would be no 30-34 or 49-53 catalog; no Caprice, Colors, Near Cut, Rose Point, Etchings books; no '40 catalog. There'd be no NCC Museum in Cambridge without the hard work of volunteers who made it possible or the persons who donated or loaned glass. These are benefits of membership that we get today, and are of enduring value.

And, finally, there is "The Future" ... what we can all do together? One example is taking advantage of new technology such as the Internet. If you haven't seen it lately, Don Stevens has done another really outstanding update of our Website. Today's search engines will soften those persons who said they can't find enough about their pattern. Our reservoir of historical knowledge is now often a key stroke away.

The club is becoming more mobile. Our Harrisburg effort (Thanks John Corl, Pam, and the others!) attracted hundreds of people and helped sell over \$600 in books and we welcomed 10 new members. There will be more of these as our regional membership program is announced at Convention.

There is a lot to be excited about and many ways to understand and fully take advantage of the benefits of membership. Welcome to the family!

Bill

Directions Around Cambridge

For the benefit of those members attending their first NCC Convention and thus most likely visiting Cambridge, Ohio, for the first time, we provide the following easy directions to find your way from the motels to the Pritchard Laughlin Civic Center and the NCC Museum. Alternate directions will be in the Convention registration packet.

To get to the **Pritchard Laughlin Civic Center** from the motels on Southgate Parkway, enter I-70 West toward Columbus. Take the next exit which is #176 for U.S. 40. At the traffic light at the end of the exit road, turn right and go east. It is approximately 1/2 mile to the Civic Center which is located on the north side of the road.

To travel to the **NCC Museum**, take I-70 East towards Wheeling, WV, off of Southgate Parkway. Then take the I-77 North exit to Cleveland. Exit from I-77 onto U.S. 40 East to Old Washington. The Museum is located on your left shortly after you exit from I-77.

Alternate routes to both sites require you to follow Southgate Parkway North into downtown Cambridge, Ohio. It dead ends at U.S. 40 in front of the Guernsey County Courthouse. Turn left and follow the signs for U.S. 40 West to go to the Civic Center or turn right and follow the signs for U.S. 40 East to go to the Museum.



1998 Calendar Planning

Mark your calendars now with these important events during **NCC's 25th Anniversary Year**:

June 24-28
Silver Anniversary Cambridge Convention
Pritchard Laughlin Civic Center

June 26-28
NCC Glass Show and Sale
Pritchard Laughlin Civic Center

June 27
"NCC Saturday Glass Dash"
Beech Grove Family Development Center
Cambridge, Ohio

June 28
NCC Annual Meeting
Pritchard Laughlin Civic Center

August 22
August Quarterly Meeting and Work Session
NCC Museum
Cambridge, Ohio

November 7
November Quarterly Meeting and
Education Program
Cambridge Country Club (tentative)

SENECA	MORGANTOWN	BEAUMONT	
Tiffin	<p style="text-align: center;">9th Annual Convention</p> <p style="text-align: center;">Old Morgantown Glass</p> <p style="text-align: center;">Show & Sale</p> <p style="text-align: center;"><i>Featuring "Morgantown" & Other Glassware of A Bye-Gone Era</i></p> <p style="text-align: center;">June 12, 13, & 14, 1998</p> <p style="text-align: center;">St. Mary's Peace Hall, Star City</p> <p style="text-align: center;">Morgantown, West Virginia</p> <p style="text-align: center;">(I-79 Exit 155 1 mile)</p>		Cambridge
Fostoria	<p>Friday 6 pm - 9 pm — Premier Show & Sale \$10.00 Special Admission</p> <p>Saturday 9 am - 5 pm — Show & Sale 10 am - 12 pm — Former Workers Reception 1 pm — Educational Seminar 6:30 pm — Convention Banquet*</p> <p style="text-align: center;">*Advance Reservations Required at P.O. Box 894, Morgantown, WV 26507-0894 or phone (304) 292-9400</p> <p>Sunday 12 noon - 4 pm — Show & Sale</p>		Hessley
Westmoreland	<p style="text-align: center;">Dealer Inquiries: Jim Leasure, (412) 225-8445</p> <p style="text-align: center;">\$3.00 General Admission (Good Sat. & Sun.)</p> <p style="text-align: center;">Public Invited To All Events Parking At Door</p>		Petersen
Erie	Phoenix	Consolidated	Lough

Crystal Ball Pages Missing??

Have you ever received a *Crystal Ball* and discovered that some of the pages are missing? Or have there been times that you have not received an issue or it was severely damaged? Please let us know if this does happen ... we want to know.

DIANE

A Second Look

by Mark Nye

The October 1931 issue of CHINA, GLASS & LAMPS introduced Diane to the trade. Described in the initial advertisement as "an exquisite glass line of domestic manufacture made in full stemware, flatware, and dinnerware, Diane was to remain in the Cambridge line until 1954 and the initial factory closure. This initial advertisement featured Diane on a 3122 goblet.

During its early years, Diane, also known as plate etching 752, was placed on colored blanks using many of the popular Cambridge colors of the era: Willow Blue, Amber, Peach-Blo, Gold Krystol, Forest Green, Heatherbloom, Carmen, and Crown Tuscan. This was, of course, in addition to its use on Crystal ware. On colored blanks, Diane ranged from a dinnerware service (Willow Blue) to just a few pieces of Carmen where it was gold encrusted. Special treatments included gold encrustation on Crystal, Crown Tuscan, and the just mentioned Carmen. From 1940 on, Diane came only on Crystal blanks, plain and to some extent, gold encrusted, and gold encrusted on selected Crown Tuscan pieces. By the late 1940s and continuing to the end in 1954, production of Diane was limited to Crystal. Little Diane in any color is found today, indicating limited production, while Crystal Diane is readily available to collectors.

During the almost quarter of a century it was a part of the Cambridge line, Diane was used on four complete stemware lines; these being 3122, 1066, 3106, and Stradivari. Only one of these, 3122, carried the Diane etching for the entire time it was in the Cambridge catalog. Stradivari stemware etched Diane dates to the



late 1930s and early 1940s, while Diane etched 1066, including tumblers from the 3135 line, was shown in the 1931 Cambridge catalog supplement and on 3106 stemware, it was illustrated in the 1934 supplement.

In addition to the four complete lines, Diane etched pieces are known from several other stemware lines; 3500, 3120, 3104, 7801, and 7966. There are cocktails from the 3104 line; sherries and cordials from 7966, and 6 oz. hollow stem saucer champagnes from 7801. A 3120 cordial etched Diane is in a private collection and there is documentation indicating Gadroon or 3500 stemware was also etched Diane. This author has not seen a piece of the latter.

Besides the stemware lines and their associated tumblers, assorted other tumblers were etched Diane. From the 3400 line, there is the 3400-41 three-piece frappe set, consisting of a bowl and one each of 4-oz. and 5-oz. cocktail tumblers; however, only the bowl is etched. A number of other tumblers from the 3400 line were also etched Diane: 3400/100 13 oz., 3400/115 13 oz., 3400/38 12 oz., 3400/38 5 oz., 3400/92 2-1/2 oz., 3400/1341 1 oz., and the 3400/1344 1-oz. cordial tumbler. Three blown tumbler lines, Nos. 498 with five sizes, 497 with three sizes, and 321 with three sizes also came etched Diane. Two 5-oz. footed tumblers Nos. 7801 and 3000 were included in the Diane line as were two flat tumblers from the late line Corinth, 13- and 5-oz. sizes.

Collectors of etched jugs have 10 Diane etched items to seek out. From the 3400 line come the 3400/100 76-oz.

(Continued on page 7)





The Cambridge Glass Company



DIANE



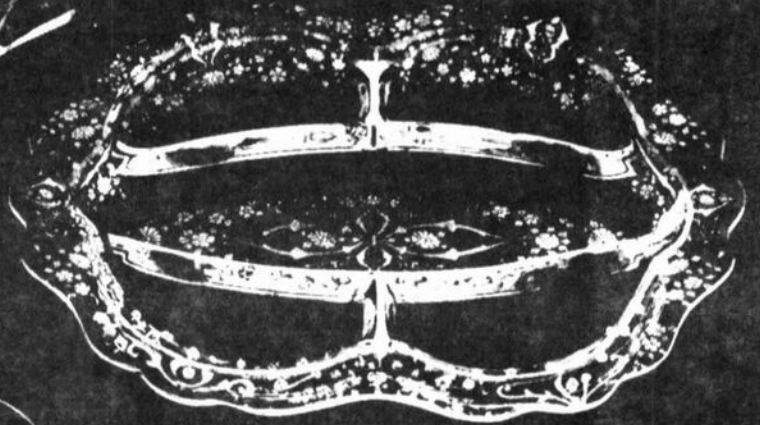
3400/62



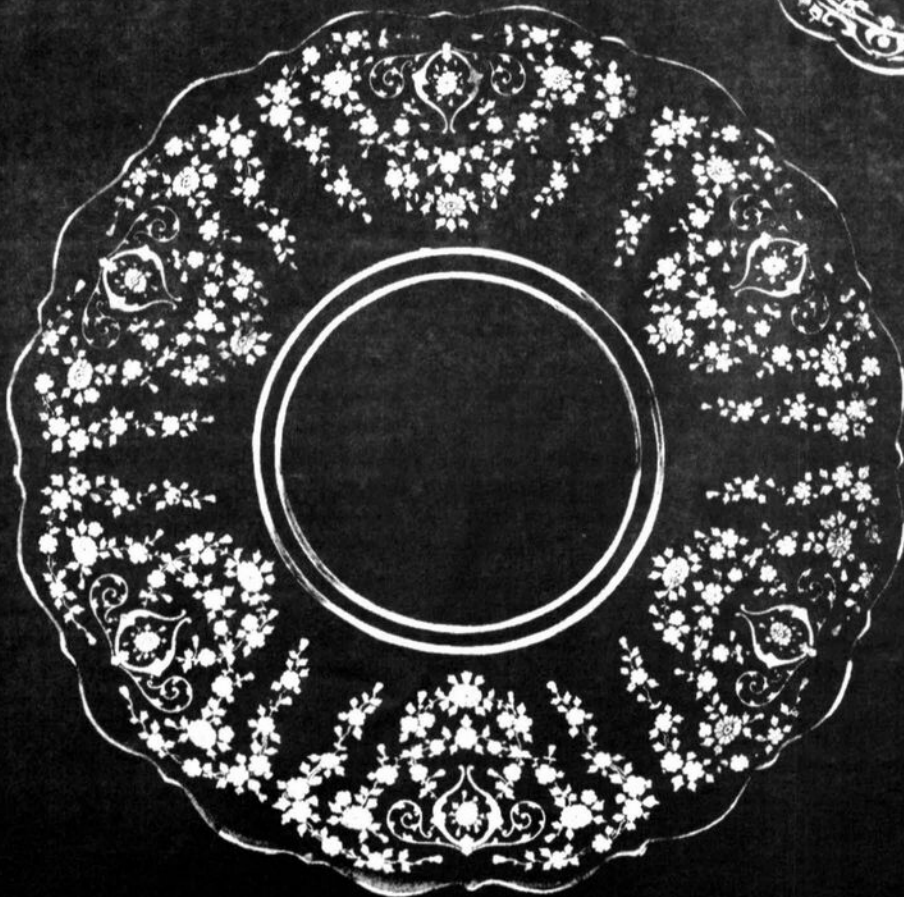
1066 4



3400/4



3400/67



1396



1233



3122

(DIANE - Continued from page 5)

jug with ice lip, 3400/38 80-oz. ball-shaped jug, 3400/141 80-oz. jug, 3400/152 76-oz. jug and the No. 103 two-piece night set, composed of a pitcher and tumbler. With the advent of the Corinth line in the late 1940s, five more pitchers or jugs joined the Diane family. These are the 3900/114 Martini jug, 3900/115 76-oz. jug, 3900/116 80-oz. ball jug, 3900/117 20-oz. jug, and the 3900/118 32-oz. jug.

Not to be overlooked are Diane etched decanters, cordial bottles, and cocktail shakers. The former includes Nos. 3400/92 32-oz. decanter, 3400/113 35-oz. handled decanter, and the 3400/119 12-oz. cordial bottle or decanter. Other Diane decanters are the 1321 28-oz. footed, the 1320 14-oz. footed, the 1372 28-oz. with cut stopper polished in, and the 1380 26-oz. square decanter. In the group of Diane etched cocktail shakers and mixers are six items: 1395 cocktail mixer with top and No. 2 spoon; Pristine No. 99 shaker with chrome top; Pristine No. 101 cocktail shaker with glass top; Nos. 98 and 99 cocktail shakers with chrome tops; and the previously mentioned 1408 martini pitcher or cocktail churn.

The original Diane etched dinnerware utilized 3400-line blanks and there was a rather impressive number of place-setting pieces available; bread & butter plate, two styles of salad plates, dinner plate, service plate, cup/saucer, after dinner cup/saucer, cranberry, fruit saucer, cereal, cocktail icers, finger bowls, canape set, corn dish, rim soup, and more. Complimenting the place-setting pieces are a wide assortment of serving, condiment, and decorative items. Included in the Diane line were five styles of salt and pepper shakers, four styles of oil bottles, six candlesticks or candelabra, nine candy boxes and 23 vases.

Diane etched vases range in size from the 6004 five-inch footed vase to the 1336 18-inch floor vase. Excluding gold encrusted pieces, the 18-inch vase was the most expensive single piece of Diane offered in January 1940, listing at \$12.50 each. On the same price list stemware was priced at \$1.13 a stem and ball jugs at \$3.75 each.

Just to collect all the Diane etched candy boxes would be a challenge. The nine candy boxes include three from the Gadroon line: the 3500/103 tall-stemmed blown candy box and cover, the 3500/78 rams head candy box and cover, and the 3500/57 3-compartment candy and cover; and three other blown candy boxes with lids with etched Diane: both the tall and short 3121 boxes and the 1066 low candy box and cover. Rounding out the nine boxes are the 3400/9 and two from the Corinth line, 3900/138 and 3900/165.

The 1940 price list offered 161 Crystal items with gold encrusted Diane, also known as D/1012. These included the complete 3122 stemware, 22 vases. A gold encrusted luncheon set was available but not a dinner set as neither

the dinner or service plate was offered with gold encrustation.

Various Crown Tuscan pieces are to be found with D/1012. Eight such items are pictured in the 1930-34 catalog reprint and include three vases, a console bowl, three compartment relish, and more. The 1940 price list contained a listing of 22 items in Crown Tuscan with gold encrusted Diane. Of these 22 pieces, 15 are vases and one, the 3500/42 covered urn. Making up the remaining items are a console bowl, three candlesticks, a three-part relish, and the 3500/78 three-part candy box and cover.

By 1949 the 3400 line had been replaced by the 3900 or Corinth line. A dinnerware service was still available but nowhere near the same number of items were being produced. The 1949 price list had some 71 Diane catalog items, none of which were available in Crystal, gold encrusted. On Crown Tuscan blanks, there were 12 items etched Diane and gold encrusted, of which seven were vases. As the 1950s progressed, additional pieces were added to the etched-ware lines. The final price list for Diane in 1953 had almost 100 listings.

Regular production of Diane ceased in 1954 with the initial plant closing. Catalogs and price lists from the reopen period do not list Diane as an open stock line. The 1956 price list does state that Diane was available on No. 3122 stemware through a replacement service. The final Cambridge price list, dated 1958, omitted any reference to the replacement service or to Diane. Thus the Diane story closes as it opened, with 3122 stemware.

WE CLEAN CLOUDY GLASS! SATISFACTION GUARANTEED

Yes, it is true that we really can restore the interior of your cruet, vase, decanter and other *internally* etched items back to near original condition!

We do not oil, wax or cover up the sickness in any way! We actually *remove* it.

No items are too sick to clean! If we cannot clean an item to meet your satisfaction, the cleaning is **FREE!**

Send no money up front. When we return your item a bill will be enclosed for the postage and cleaning. If you are not satisfied, only the return postage is requested.

Most items clean in 6-8 weeks. All glass is handled and cleaned at your risk. Some very cloudy items may take several additional weeks.

Cruet	\$20.00	Cocktail Shaker	\$30.00
Vinegar & Oil	\$25.00	Salt Shaker (one)	\$25.00
Cologne	\$20.00	Salt Shaker (pair)	\$35.00
Decanter	\$30.00	Water Bottle	\$30.00
Vases (under 12")	\$25.00	Lavender Jar	\$20-30.00

Ship to: **Kim Carlisle & Associates**
28220 Lamong Road, Dept. C
Sheridan, IN 46069
(317) 758-6767

Repros & Logos

by Bill Hagerty

How many of you collect CROWN TUSCAN? Out on the collector's trail there are a few new pieces made from the original Cambridge Glass formula and called Crown Tuscon. Most of the pieces are being made in the molds of other companies such as Westmoreland.

I talked with P.J. Rosso Jr. of Wholesale Glass Dealers in Portvue, PA, for permission to publish what he sells. I explained that we are just trying to keep the Cambridge collectors informed as to what is being made. The following is a list of what is being sold in Crown Tuscon.

- 5" cat on ribbed base
- 5" chicken with split tail on woven nest
- 3 1/4" bottoms up whiskey glass with coaster
- 2 1/2" John Bull style eyecup
- 2 1/2" solid glass bulldog
- 5" rooster with split tail on ribbed base
- 9" standing rooster
- 7 pc. fan & file miniature punch set
- 2" raised ribbed style eyecup (also made in Vaseline)
- 5" standing rooster
- 3" covered chicken
- 4 1/2" rose slipper
- 5" chicken on wide rim base
- 1 1/2" round English hobnail salt
- 5" ring and petal butterdish

Next time, a logo most of you haven't seen.

Please share your finds with us.



Convention 1998 SILVER ANNIVERSARY Update

by Mark Nye, Convention Chairman

Even though the 1998 NCC, Inc. Convention, our 25th, begins within the month, you still have time to make plans to attend. If you are planning to attend and have not yet mailed in your registration form, do so today! They must be received in Cambridge by June 15. Remember, you must register for all of the events you plan on attending even if there is no charge for the event. We do not mail out registration confirmations. There has never been a problem with registrations not being received and hence we have never seen a need for doing so.

I hope everyone has made their motel reservations. If you are unable to obtain lodging of your choice in Cambridge, the Zanesville motels are an alternative and are not a great distance away. Motel lists were in the April issue.

The tentative Events Schedule was published in the *May Crystal Ball*. The final schedule will be in your convention packet and should be used at convention since last minute changes, although not anticipated, might occur. A copy of the schedule will be posted at the Best Western Motel, Deer Creek Motel, the NCC Museum, and at the Civic Center. If you should arrive after the Registration desk has closed on Thursday afternoon, you can still attend the Thursday evening picnic and the Friday activities. Registration lists and temporary name tags will be available at the functions.

Please bring donations for the mini-auction. Donated items need not be museum-quality pieces, just something with which we can raise money for the Museum and have some fun doing it. Remember, the mini-auction is a fun auction, selling everything from Cambridge to empty bottles, "Cheers" T-shirts, and cookies. It is not a scaled-down version of the All Cambridge Auction held in March. Rather, it is a fun way to support the Museum. All items sold are donated and all proceeds go directly to the Museum.

As of May 3, I have not heard from any golfers, so I guess there may not be a formal golf outing. If anyone is interested, please let me know as soon as possible.

The location for the Tuesday night dinner has yet to be determined. Those signing up for it will be contacted directly.

On Saturday night, bring that special Cambridge goblet or glass from which to drink your favorite beverage.

The Friday and Saturday night get-togethers at the Deer Creek Pool will be BYOB.

NCC, Inc. is 25 years old this year and the 1998 Convention is the organization's 25th birthday party. Why not bring a gift of glass for the Museum. All such gifts will be put on display at the Civic Center during Convention.

See You Soon.



REGISTER NOW!
REGISTRATIONS MUST BE RECEIVED IN CAMBRIDGE
BY JUNE 15

Triangle-C/Near Cut Finds

The Controversial Near Cut Water Set

by Joseph A.A. Bourque Sr.

The year was c. 1975. While browsing through one of the better antique shops in my area, I greeted the owner who was a friend of mine. I asked him: "Anything new Guillaume?" "Joe," he retorted, "You know that everything I have in my shop is old. I don't deal in new stuff!" This was a standard joke with us.

I asked him if he had any recent finds that would interest me. He then informed me that he had just received a water set in Pink Slag that he wanted me to look at, adding, "The woman who sold it to me told me that it had 'some age.'"

As he was unwrapping this beautiful jug set with six matching Pink Slag tumblers, I informed him that the water set was not old and was relatively new. My friend, the shopkeeper, was taken somewhat aback by my opinion, and told me that if I could convince him that the set was new, he would give it to me free of charge.

The set was, simply put, gorgeous. I knew which glass firm had made it and when it was made (See Figure 1). Without even picking up a single piece of the set, I asked my friend to examine any of the six tumblers closely. He

did, but failed to notice what I had intended for him to see. So, at this point I asked him if he thought that this was a matching set. He replied in effect that it was, that the coloration was the same, the sunken strawberry motifs on the sides of all seven items were a match, the embossed strawberry flowers and sprigs on the base motifs matched (See Figures 2 & 3), and that all seven items were signed NEAR CUT (See Figure 5 for a true rubbing). We both knew that this trademark was the Cambridge Glass Company trademark.

At this point, I picked up one of the tumblers, found a barely visible "B" signature and pointed this out to him. He became a bit perplexed at this point and asked me what the "B" stood for. The "B" stands for Bennett, I informed him; Harold Bennett of the Guernsey Glass Company, Cambridge, Ohio. I told my friend that, like other proud manufacturers of their ware, he (Bennett), had placed his initial on these tumblers.

The way it worked out between Guillaume and me was that I ended up "bailing him out" of his dilemma by paying him his cost. It worked out quite well this way for both of us.

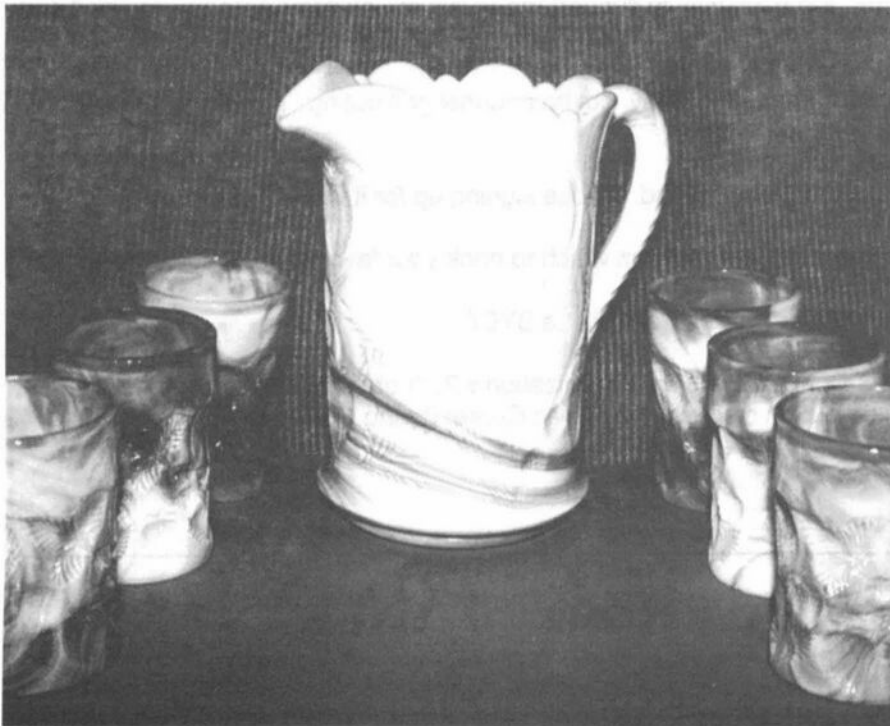


FIGURE 1

So much for the opening part of this article. Following are paragraphs and/or excerpts from existing articles which were written about 24 years ago by members of our own National Cambridge Collectors, Inc. (NCC), in our official organ, *Cambridge Crystal Ball*. These are reprinted verbatim.

[A] Issue No. 3, page 5 (July 1, 1973): Patterns by Ruth Forsythe. INVERTED STRAWBERRY has been reproduced and yet it has not been reproduced. This statement does not seem to make sense, but as in most reproductions, a new mold was made of the pattern. Also, very few pieces have been made. Actually, the only ones are the tumbler and toothpick holder. A water pitcher in a size that was never made by Cambridge in the first place in this particular pattern were never made originally by Cambridge in the Inverted

(Continued on page 11)



FIGURE 2

(CONTROVERSIAL SET - Continued from page 10)

Strawberry pattern [See Figure 6 for the pitcher Forsythe presents]. These new pieces do bear the NEAR CUT mark. In the new Inverted Strawberry, the strawberry and flower are coarser and there are no mold marks on the pieces. Remember !!! the Cambridge INVERTED STRAWBERRY had definite mold marks."

[B] Issue No. 4, page 4: Patterns by Ruth Forsythe. "Had an interesting experience recently in an Antique shop in Brazil, Indiana, regarding some Inverted Strawberry pink slag tumblers. The shop owner told me that they were not very old, but were made from an old mold of the now defunct Cambridge Glass Company. I tried to explain that the mold was not original, but that a new mold had been made. Believe it or not, he showed me a recent issue of a very well known price guide from which he had obtained the information. So-o-o it's in the book. Right or wrong, it's in the book, and I feel certain the gentleman believed the book and not a complete stranger who walked into his shop."

[C] Issue No. 5, page 5: Collectors Corner by Bob Coyle. "Collector from Shelby, Ohio asks about glass companies in the Cambridge area reproducing glass from the original Cambridge moulds. The Imperial Glass Co. of Bellaire, Ohio purchased the existing moulds from the Cambridge factory when they closed, and to the best of our knowledge, they are the only company that have used the original moulds. We are aware of some Inverted Strawberry pieces being produced with the Near Cut mark, but these are made from new moulds and with careful examination, the detail is obviously not as fine as the original Cambridge pieces."

[D] Issue No. 16, page 5: Collectors Corner by Frank Wollenhaupt. "I do know that one woman from Florida was really upset about reproductions, especially the Inverted Strawberry. I happened to be talking to her

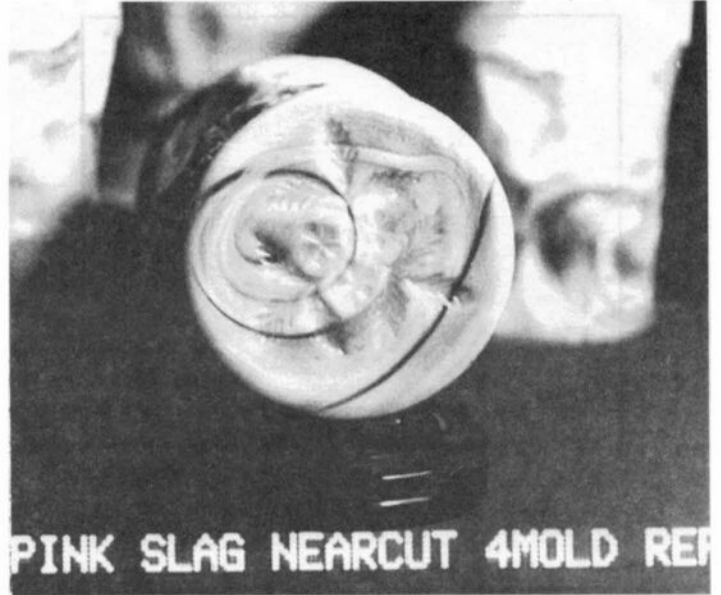


FIGURE 3

at the Cambridge Show. I asked her to follow up our little conversation with a letter when she made it back home. I still haven't received her letter."

[E] Issue No. 17, page 8: "IS IT CAMBRIDGE?" by David McFadden. "As collectors of Cambridge Glass, my wife and I are interested in the existence of reproductions and re-issues. (A reproduction is an article

(Continued on page 12)

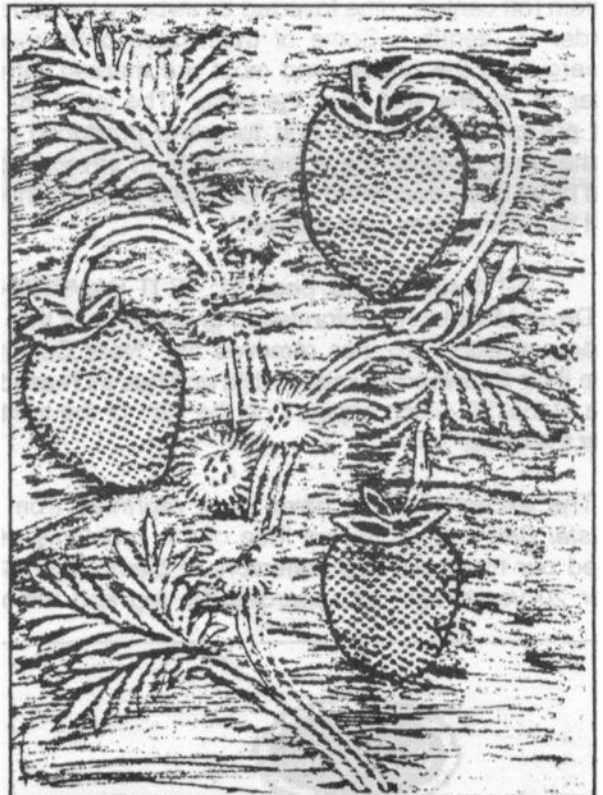


FIGURE 4

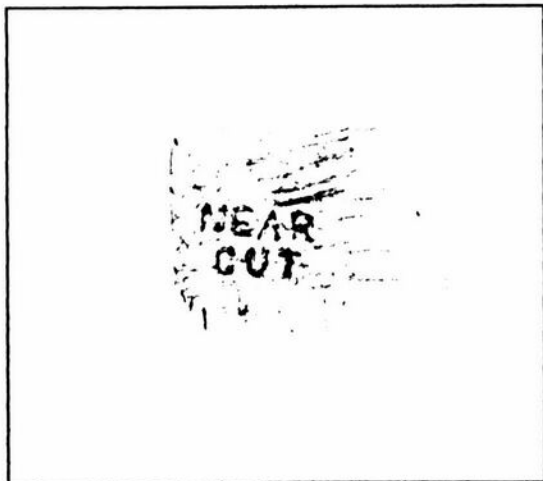


FIGURE 5

(**CONTROVERSIAL SET** - Continued from page 11)
resembling Cambridge which has been made from a new mold. A re-issue is an article made by another company using an original Cambridge mold.)"

[F] Issue No. 22, page 9: **IS IT CAMBRIDGE?** by David McFadden. "The Inverted Strawberry pitcher and tumblers have caused much concern. The Inverted Strawberry pitcher by Guernsey Glass is made on the Inverted Thistle pattern pitcher (See Figure 7) with the Inverted Strawberry design, therefore it is not the same as the original Inverted Strawberry by Cambridge. The Guernsey Glass pitcher is marked with a honey bee in the bottom (off center). The Inverted Strawberry tumblers are harder to identify. Some of them have been marked "Nearcut" in the bottom and most are marked with the letter "B" on the side near the base. (The letter "B" was not put on some of the first tumblers produced.) The pitcher and tumblers have been made in several colors and have been decorated with Gold and Red Flashed as well as having been carnivalized."

[G] Issue No. 33, page 11: **IS IT CAMBRIDGE?** by David Mcfadden. "Information given to us is that The Guernsey Glass Co. has removed the "Near Cut" mark from their Strawberry tumbler mold and has increased the size of the "B" which appears on the side of the tumbler, near the base."

The excerpts above have been reprinted from our *Crystal Ball* to give you an idea of the problems which faced our members and collectors of Cambridge Glass over 20 years ago, as regarded the jug and tumblers

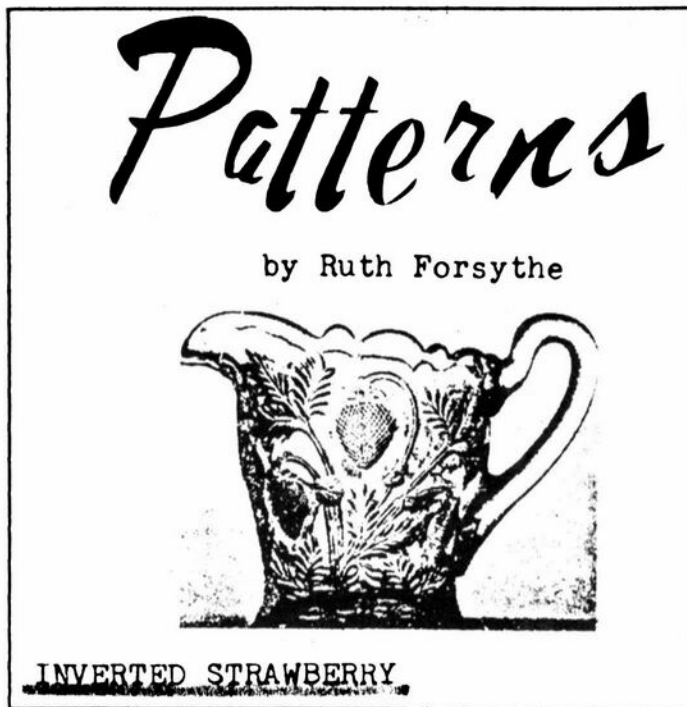


FIGURE 6

made outside of the Cambridge Glass Company in "Inverted Strawberry." Take a close look at Figure 1 which you can only see in black-and-white and visualize it in a beautiful pink slag color. Look good at the actual rubbing of the jug (See Figure 4) so you can identify it should you run across it in the future. See also the **NEAR CUT** trademark as it appears inside the base of the jug and tumblers (Figure 5).



FIGURE 7

To be continued...

Until next time,

Joe



**VISIT THE NCC WEBSITE
TODAY**

WWW.CAMBRIDGEGLASS.ORG

NATIONAL STUDY GROUP REPORTS

Study Group #13 The Miami Valley (Ohio) Study Club

The meeting of the Miami Valley Study Club was held on Tuesday, January 13. President George Stamper presided, and 18 members were present.

During our business meeting, we discussed the etchings book and the Endowment Fund. We presented a copy of our etchings book to the Huber Heights Public Library, where we have held our meetings for many years. We have been requested to make a presentation on Cambridge Glass to a church group in St. Paris, Ohio, in the spring. Working on that presentation will be Georgia and Mac Otten, Fred Schaefer, Frank Wollenhaupt, Ron Hufford, and George Stamper.

Future programs:

February: Items in transparent colors

- led by Georgia Otten

March: Cups and saucers

- led by Ron and Norma Hufford

April: Perfumes and powder boxes

- led by Ellen Teller

May: Overview of Nearcut

- led by Dave and Sue Rankin and Vicki and Frank Wollenhaupt

The program, led by Frank Wollenhaupt, featured slides of early Cambridge convention glass displays.

Many beautiful pieces of Cambridge appeared for Show and Tell: Goblet, etched Marjorie; #27 Syrup, gold key band D618; Nude Stem Cocktail, Emerald Green with frosted stem; Nude Stem Ivy Ball Vase, Amethyst; Nude Stem Comport, Amethyst; Keyhole Stem Ivy Ball Vase, Forest Green; #661 Tray, Peachblo, with 3 retaining rings; # 1025 Cigar Humidor, D990 in black with yellow rings; a lampshade in "Caprice"-like pattern marked "copyright L.D. Kichler Co. 1990; # 1066 oval Cigarette Holder and Ashtray Foot, gold encrusted D1041 Rosepoint and D1051 gold edge; #882 Tobacco Humidor with moistener, Ebony, gold encrusted etch #739 Hunt Scene; #98 5" 3-compartment Rose Knob Light Emerald Box, knob Peachblo; #52 Quarter Pound Butter Dish; Crown Tuscan Lamp made from #6004 1 0" Vase, with enameled roses and leaf decoration; Heirloom Sherbet; #3400 Amber Handled Relish, #1400/100 Tally Ho Wine; #3400/113 35 oz. Decanter, Forest Green, etch Portia; #30 9", 4-toed, 3-compartment Relish, Coral; Special

Article 6" Candy with cover, Jade, etch #703 Florentine; Strawberry Covered Butter.

- Submitted by Judy Rhoads, Secretary

~~~~~

## **Study Group #16 Elegant Glass Collectors**

On February 7, 1998, eight members of the Elegant Glass Collectors study group met. We attended the Mid-Winter Antiques and Collectibles Show and Sale, toured the Museum, admiring the Museum's collection of Cambridge Glass, and the Walker Collection on loan/display. Following that, we adjourned to the restaurant at the Millville Motor Inn, having late lunch, early dinner, and discussed what was available. Show and Tell included a Cobalt Doulton pitcher, a Marigold inverted strawberry open sugar, a Corinth blank, Wildflower etched oval console bowl. Plans for the Cambridge display at the Eastern National Antiques Show and Sale at the State Farm Show Building, Harrisburg, PA, for April 24, 25, and 26th continue to be discussed. We want to have at least two if not more members there at all times to discuss Cambridge Glass and to sell the books. Our theme for display is Colors of Cambridge, a most fitting theme for spring. Our next meeting will be a planning meeting to be held at my house on Saturday, March 21, 1998, at 1:30 p.m.

- Submitted by Pam Earussi

~~~~~

Study Group #13 The Miami Valley (Ohio) Study Club

The meeting of the Miami Valley Study Club was held at the Huber Heights Public Library on Tuesday, February 10, 1998, with President George Stamper presiding. Eighteen members and one guest were present. Among the business items discussed were: helping Phyllis Smith prepare her Cambridge items for the June auction, our plans to make a presentation on Cambridge Glass to the Champaign County Antique Club in May, our Third Annual Pig Roast in September, the upcoming Quarterly

(Continued on page 14)

(STUDY GROUP REPORTS - Continued from page 13)

meeting and Auction in March, the new NCC website, and rave reviews for Les Hanson's appearance on "Collectible Treasures."

Show and Tell: Stradivari 7 oz. tall champagne, etched Portia; #805 syrup and cover; #2631 Marjorie salt and pepper, toothpick, footed sherbet; 9" perfume, Helio; #400 Caprice 12 oz. goblet; #33 Seashell 4", 3-ftd. ashtray, Violet; #737 Pristine canoe ashtray, Ebon.

Program: The program, led by Georgia Otten, was on the transparent colors. Many examples, a helpful description sheet, and demonstrations of fluorescence with a black light added to a very informative presentation.

- Submitted by Judy Rhoads, Secretary



**Study Group #13
The Miami Valley (Ohio) Study Club**

The meeting of the Miami Valley (Ohio) Study Club was held on Tuesday, March 10, at the Huber Heights Public Library.

Twenty-one members were present. Our club membership and attendance has been growing! We welcome all interested glass collectors in the Southwest Ohio area to come to our meetings!

During our business meeting, we discussed the Endowment Fund, a study club project, and Phyllis Smith's auction. The dates for two important social events were set: our Annual Picnic on July 18, and our Christmas Party on December 11. Both of these events occur at Phyllis Smith's home in Springfield.

Show and Tell: #3775 1 oz. Cordial, cut Roxbury; #848 Two Kid Flower Holder; Light Emerald Cologne, etched #704 with gold encrusted border; 11" Type I Swan; #668 Epergne; Crown Tuscan #3500/42 Gadroon Urn Lamp; Gold Krystal Swan; Emerald #3900/37 Martha Individual Cream and Sugar on Tray; Nearcut #2631 Marjorie Handled Cracker Jar; #577 8" Horn of Plenty; Willow Blue #3500/28 10" Footed Bowl; #1111 Heron 12" Flower Frog; Nearcut #2651 Inverted Feather Goblet, Tumbler, and Footed Comport; Chantilly Candy in silver holder; Chantilly Coaster in silver holder.

Program: Our program was on cups and saucers, led by the Wollenhaupts and the Huffords.

- Submitted by Judy Rhoads, Secretary



Elegant Glass Collectors study group members enjoy gathering in March: (l. to r.) Don Stevens, Anna and Bud Walker, Windsor Tracy, Bill and Leslie Connor, and John Corl.

**Study Group #16
Elegant Glass Collectors**

Nine members of the Elegant Glass Collectors study group met at the home of Pam Earussi on March 21, 1998. The meeting focused on the Cambridge display to be held at the Eastern National Antiques Show and Sale in Harrisburg, PA, April 24, 25, and 26. We went through the Colors of Cambridge, our theme, and volunteered from our collections those pieces which would show the various colors. Bud and Anna Walker will be there for setup on Thursday, along with John Corl. I will be there on Saturday and Sunday, along with Don and Bonnie Stevens, Windsor and Laura Tracy. We are expecting several Cambridge NCC members at different times, as well as our president Rick Jones. And Willard Kolb is

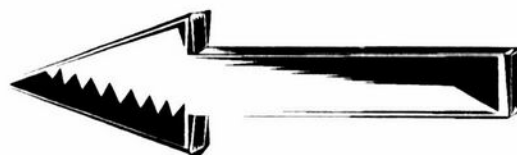
(Continued on page 15)



Elegant Glass Collectors Laura Tracy (left) and Pam Earussi (right) pause for a moment for the camera during an evening of "Cambridge discussion" and plans.

WANTED - WANTED - WANTED - WANTED - WANTED -

1069 - Goblet - Apple Blossom
 1400 - Martha Washington - Any Stem
 1402/150 - Tally Ho - Any Stem - Elaine
 1402/200 - Tally Ho - Any Stem - Chintz, Vichy
 3011/1 - Banquet Goblet - Plain - Etched - Crystal - Color
 3011/2 - Table Goblet - Plain - Etched - Crystal - Color
 3011/3 - Saucer Champagne - Etched - Crystal - Color
 3011/5 - Hock - Plain - Vichy - Crystal - Color
 3011/6 - Roemer - Plain - Vichy - Crystal - Color
 3011/7 - Claret - Plain Vichy, No. 758 - Color
 3011/8 - Sauterne - Plain - Vichy - Color
 3011/11 - Tulip Cocktail - Plain - Vichy - Crystal - Color
 3011/12 - Wine - Plain - Vichy - Crystal - Color
 3011/13 - Brandy - Plain - Vichy - No. 758 - Crystal - Color
 3011/14 - Cordial - Plain - Vichy - Crystal - Color
 3015 - Goblet - Loma
 3050 - Goblet - Any
 3070 - Goblet - Any
 3081 - Goblet - Springtime, La Fleur
 3102 - Goblet - Marlene
 3105 - Any - Rosepoint
 3110 - Goblet - Etch 285
 3117 - Goblet - Loma
 3118 - Goblet - Any
 3143 - Gyro Optic - Goblet - Any - Crystal - Color
 3151 - Goblet - Any
 3650 - Goblet - Any - Blossom Time - Crystal - Color
 3777 - Goblet - Any
 7605 - Goblet - Any - Strawberry, No 407, N/E 311
 7858 - Goblet - Any - Grape, Martha, N/E 319
 Arcadia - Goblet - Any
 Caprice 3550/400 - Goblet - Any - Crystal - Moonlight
 Connoisseur - Goblet - Any - Leaf, Mimosa, Woodland
 Everglade - Tumbler - Crystal - Color
 Touraine - Goblet - Any - Grape, Strawberry, N/E 288,
 Tuxedo - Goblet - Any - Crystal - Color
 1088? - Any



**Ever wonder what the
NCC Museum
might need/want on its shelves ??**

People have asked what is needed. This is a start. Do you have any of these items that you would like to donate to the Museum or that you think the Museum might want to purchase?

Here is yet another way
to help NCC grow
and to share with others
at the same time!

**WANTED - WANTED - WANTED - WANTED - WANTED -**

(STUDY GROUP REPORTS - Continued from page 14)

planning to attend. John is coordinating the display in the two cabinets, and he is planning to display Blue Caprice on the table. Books will be sold, and it is hoped, general information about Cambridge Glass will be shared. This will help our membership to grow. Bill and Leslie Connor displayed some of their unusual collection of Scotty Dogs. Boyd Scotties are half-scale of the Cambridge Scotty Dogs, and we saw examples in Cobalt, Rubina, and Ruby. We saw one Scotty in caramel slag by Imperial, one Ebon by Imperial in the Cambridge mold marked NCC, and two Crystal Scotties, one base was solid, and one base was hollow. We also saw a metal bookend Scotty, made in the '20s.

We saw a Nearcut Marigold carnival souvenir tumbler, marked Truro, Nova Scotia, of special interest because it was not known to have been produced for souvenir trade outside the United States. We saw a Marigold strawberry covered sugar. A Crystal cruet, 3400 Line, footed,

purchased in a flea market for a flower vase was identified as having an ecclesiastical etching from the new etchings book. Bud and Anna recalled seeing the proper stopper, and efforts are in progress to purchase the stopper. Thus, the resources of the study group may lead to an ecclesiastical marriage of cruet and cross stopper.

Also displayed were a Ruby flashed toothpick holder marked Cambridge Glass Co., 1901, made by Harold Bennett, Guernsey Glass Co., and an opaque ivory handled mug, also by Guernsey Glass, marked Cambridge Glass Co., 1901.

Following the meeting, we enjoyed a turkey dinner and then departed in rain and sleet.

- Submitted by Pam Earussi

The **DAZE** Inc.

SPECIAL OFFER
to NCC friends
\$2.00 OFF
the 1 year subscription price
when on this form or copy of it.

The Original National monthly newspaper dedicated to the buying, selling and collecting of American made glassware china, and pottery from this century. We educate and inform you each month with feature articles by top notch writers, readers letters, club happenings, reproduction news, show reports and there are hundreds of dealers to help you fill in the missing pieces of your collection. "Keep up with what's happening" . . . Subscribe today!

Name _____
 Street _____
 City _____
 State _____ Zip _____
 || 1 year \$21.00 || 2 years \$40.00 || \$2.00 Single Copy
Subscription Hot Line: 1-800-336-9927
 Exp. Date _____ Card No. _____
 Signature _____

Orders to:

The Daze, Inc., Box 57, Otisville, MI 48463

Please allow 30 days for your first issue - Canadian Subscribers add \$1.00 per year and subscribe by charge card only! This Special Offer may not be combined with any other special offer
 Offer Expires December 31, 1998



Stems Without Thorns

As the world's largest supplier of discontinued and active china, crystal, flatware and collectibles, Replacements, Ltd. has over 325 different patterns of Cambridge crystal.

And however much we enjoy selling pieces which were once thought irreplaceable, we love buying them as well. Thanks to people like you, our crystal inventory currently numbers in the hundreds of thousands, and the numbers keep growing every year.

So, if you've been unsuccessfully searching for that elusive piece of Cambridge - or any other type of fine crystal - call us for a free list of pieces available in your pattern. And, if you're looking to sell pieces you currently have, we can help you there, too.

REPLACEMENTS, LTD.

China, Crystal & Flatware • Discontinued & Active

1-800-REPLACE
(1-800-737-5223)

1089 Knox Road,
PO Box 26029 Dept CB,
Greensboro, NC 27420

• TIFFIN • DUNCAN MILLER • FENTON • HEISEY •

**23rd Annual Duncan Miller Convention
Glass Show & Sale**

Sponsored By



The National Duncan Glass Society
July 25, 26, -- 11:00 A.M. to 5:00 P.M.



Alpine Club

735 Jefferson Avenue, Washington, PA
 I-70 Exit 6 1/2 Mile

Admission \$3.00

\$.50 Discount With This Card/Ad

Auction Saturday, July 25, 1998 -- 6:30 P.M.

Thistlecrest Auction House, Rt. 40 E.

For Information Call:

(724) 225-9950

• NEW MARTINSVILLE • PADEN CITY • MORGANTOWN •

CAMBRIDGE • FRY • FOSTORIA

IMPERIAL • OLD PRESSED GLASS

HEISEY COLLECTORS OF AMERICA, INC.
27th Annual National Convention
"TABLETOPS FOR THE TABLES"
Featuring the 28th Annual
PREMIERE GLASS SHOW
50 prominent dealers from across the U.S.
June 17-20, 1998

—*Special Preview*—
 Wednesday, June 17
 5-8 p.m.
 —\$20 admission—

◆ ◆ ◆

Thursday, June 18
 Noon - 5 p.m.
 —\$4 admission—

◆ ◆ ◆

Friday, June 19
 Noon - 5 p.m.
 —\$4 admission—

◆ ◆ ◆

Saturday, June 20
 Noon - 5 p.m.
 —Free admission—

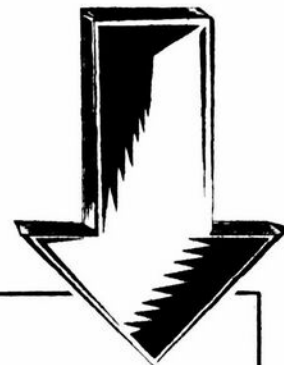
◆ ◆ ◆

Visit the free
HEISEY GLASS DISPLAY
Hopewell Hall

OSUN-COTC Campus, Country Club Drive, Newark, OH
 30 miles east of Columbus off Ohio St. Rt. 16
 For more information call (614) 345-2932
Proceeds benefit the National Heisey Glass Museum

Cliff McNeil
To Present Seminar
at the
24th Annual National
Depression Glass
Convention

**"Cambridge: Rosepoint,
 Statuesque Line and Flying
 Nude Bowls"**



**24TH ANNUAL NATIONAL DEPRESSION GLASS
 CONVENTION & SHOW**

Sat., July 11, 1998, 10:00-5:00
Sun., July 12, 1998, 11:00-4:00

Live Oak Civic Center
8101 Pat Booker Rd.
Live Oak, TX 78233-2600 (San Antonio)

Depression, Elegant and Other Collectible Glass

Admission \$4.50 - Good Both Days
(\$1.00 Off With This Card)

For Information:
Kent Washburn
(210)599-0635/WashburnK@aol.com
NDGA
P. O. Box 8264
Wichita, KS 67208-0264

Friday, July 10 - 6:00p.m.
Membership Meeting & Preview
Members Only @ \$8.50 per person
Membership Dues @ \$15.00 per couple

~ GLASS ~ MARKETPLACE

Classifieds

WANTED: Rare or unusual pieces of Cambridge Glass especially Opaques or Carnival. Also Cambridge Art Pottery. Top prices for outstanding pieces. Call collect **609-965-2413**.



Bogart's Bed & Breakfast

62 W. Main Street, New Concord
New Concord lodging in 1830 Federal
Style home, decorated with
antiques throughout.



Bogart's Antiques

7527 E. Pike, Norwich OH
Quality Antiques Bought & Sold

OWNERS: Jack & Sharon Bogart
872-3514 or 826-7439



Salt & Pepper Tops For Sale

Plastic tops to fit most Cambridge, such as Rosepoint ftd. and flat-bottom shakers. Also fit Heisey Rose, Saturn, Plantation, Crystalite and some Orchid.

Fit some Anchor Hocking and Candlewick. (CAUTION - do not force on as they will crack) Made of polycarbon, the same material used to make taillight lenses for autos.

Price: 1 to 9 pairs @ \$6 per pair
10 or more @ \$5 per pair

ON SALE NOW AT THE NCC MUSEUM
Please add \$3.00 for shipping & handling.



TIFFIN GLASS
COLLECTORS CLUB

13TH ANNUAL SHOW & SALE

Featuring *TIFFIN GLASS*
& Other Fine Glassware

SCHOOL OF OPPORTUNITY

780 E. Co. Rd. 20, Tiffin, Ohio

Sat., June 27, 1998 10 AM - 5 PM
Sun., June 28, 1998 11 AM - 4 PM

ADMISSION \$3.00

Saturday Banquet - 7 PM
Reservations Required
Speaker: Leslie Piña, Glass Author

Information: 419-447-5505 or 419-447-4452

Fostoria Glass Society Presents 18th Annual

FOSTORIA CONVENTION

"Fostoria in the 1950's"
June 12, 13 & 14, 1998
DELF NORONA MUSEUM
Eighth Street & Jefferson Avenue
Moundsville, West Virginia

Show and Sale
Friday, June 12 - Premier - 6:00 to 9:00 p.m.
Admission \$8.00
Saturday, June 13 - 11:00 a.m. to 5:00 p.m.
Sunday, June 14 - 11:00 a.m. to 4:00 p.m.
Admission \$3.00
for more information, contact: Tom (304) 737-2006

Glass Auction
Saturday, June 13 - 6:00 p.m. (Preview 5:00 p.m.)
for more information, contact: Larry (304) 845-3711

Glass Flea Market
Sunday, June 14 - 8:00 a.m. - Admission \$7.50
FREE admission - 10:00 a.m.
for more information, contact: Clara (304) 845-3897

Benefiting the Fostoria Glass Museum
Moundsville, WV (304) 845-9188

DEALERS



DIRECTORY

NOTE: When writing to the dealers listed here, please enclose a SASE!

<p>DAUGHERTY'S ANTIQUES Jerry and Shirley Antiques and Collectibles * Mostly Glass Shows & Mail Orders 2515 Cheshire No 402-423-7426 Evenings Lincoln NE 68512</p>	<p>"HAPPINESS IS" Buddy and Kathy Stultz 3106 Warren Court, Glen Allen, VA 23060 804-672-8102 Specializing in American Made Glass We Buy & Sell, Shows & Mail Order</p>	<p>THE JONES GROUP Cindy Jones Buy and Sell Cambridge Glass 650 Riverside Drive Sleepy Hollow, NY 10591 914-631-1656 or E-Mail Caprice0@aol.com</p>
<p>Milbra's Crystal Buy & Sell Replacement and Matching Specializing in Cambridge Milbra Long (817) 645-6066 Fostoria Emily Seate (817) 294-9837 Heisey PO Box 784, Cleburne, TX 76033 and others E-mail: longseat@flash.net</p>	<p>YOU CAN ADVERTISE YOUR ANTIQUE SHOP HERE!</p>	
<p>THE GLASS URN 456 West Main Street, Suite G Mesa, AZ 85201 602-833-2702 Mail Order Shows Open Shop CAMBRIDGE, FOSTORIA, HEISEY, ETC.</p>	<p>ANTIQUES ON THE MALL SPECIALIZING IN CAMBRIDGE GLASS Bogart's - Bldg #3 - Norwich, OH Virginia Bennett 740-432-4483 64183 Warne Drive, Cambridge, OH 43725</p>	<p>GATEWAY ANTIQUE MALL, INC. JUST NW OF MINNEAPOLIS-ST. PAUL, MN Next to Super 8 in Rogers, MN (I-94/101 Intersection) 85 Dealers 7 Days, 10-6 612-428-8286 ELAINE STORCK, OWNER/DIRECTOR</p>
<p>THE DEGENHART PAPERWEIGHT AND GLASS MUSEUM, INC. P.O. Box 186 Cambridge, Ohio 43725-0186 Intersection of US 22 & I 77 Phone 614-432-2626</p>	<p>D & D ANTIQUES Columbus, Ohio Dick Slifko SHOWS ONLY</p>	<p>JAMESTOWN ANTIQUES 16 E. Washington St., Jamestown, OH 45335 Rosepoint and Cambridge our Specialty Shows and Shop (chance or appt.) Buy (937) 675-6491 Sell Susan and Larry Everett</p>
<p>THE GLASS CUPBOARD P.O. Box 652 West End, North Carolina 27376 Marcia Ellis Cambridge, Heisey 910-673-2884 Shows, Mail Order</p>	<p>JUDY'S ANTIQUES Judy Bennett 422 S. Ninth Street (Corner of Jefferson) Cambridge, Ohio 43725 Bus. 740-432-5855 Res 740-432-3045 CAMBRIDGE GLASS MY SPECIALTY</p>	<p>We Buy Cambridge Kelvin and Heather Moore 810 Red Mill Drive Tecumseh, MI 49286 Phone 517-423-0993</p>
<p>FINDER'S ANTIQUE HOUSE 3769 Highway 29 North Danville, VA 24540 (804) 836-6782 Cambridge-Heisey-Duncan-Fostoria</p>	<p>GREEN ACRES FARM 2678 Hazelton Etna Rd., Pataskala, OH 43062 (State Route 310 North) Sat & Sun 1-7 PM 614-927-1882 Antiques, Crystal Glass and Collectibles</p>	<p>CRYSTAL LADY 1817 Vinton St., Omaha, NE 68108 Bill, Joann, and Marcie Hagerty Bus. 402-341-0643 Res. 402-391-6730 Specializing in Elegant Glass & Collectibles</p>
<p>YOU CAN ADVERTISE YOUR ANTIQUE SHOP HERE!</p>	<p>YOU CAN ADVERTISE YOUR ANTIQUE SHOP HERE!</p>	
<p>MICHAEL KRUMME Cambridge and other elegant glassware (213) 874-GLASS e-mail mkrumme@pacbell.net website http://www.glassshow.com PO Box 48225 Los Angeles CA 90048-0225 Send your want list</p>	<p>Warren and Mary Welsh Cambridge & Other Elegant Glassware 3635 Saddle Rock Rd., Colorado Springs, CO 80918 (719) 531-5866 WELS@EARTHLINK.NET MAIL ORDER SHOWS</p>	<p>MARGARET LANE ANTIQUES 2 E. Main St., New Concord, OH 43762 Lynn Welker 740-826-7414 Cambridge Glass Matching Service Hours Mon-Fri 10-12 AM, 1-5 PM or by Appointment</p>
<p>ISAACS ANTIQUES (740) 826-4015 See our booths in Penny Court Mall in Cambridge and East Pike Antique Mall at Rt. 40, one mile west of I-70 Norwich Exit #164</p>	<p>ALADDIN LAMP BOOKS Free List Figurine Lamps Wanted Bill & Treva Courter 3935 Kelley Rd. Kevil, KY 42053 Phone/FAX 502-488-2116</p>	<p>DEXTER CITY ANTIQUE MALL P. O. Box 70, Dexter City, Ohio 45727 (740) 783-5921 Located on Ohio St. Rt. 821 Between Exits 16 & 25 off I-77 Just 30 min. South of Cambridge, Ohio</p>

AUCTION

All Cambridge Glass and Related Items

from the Private Collection of

Phyllis and (the late) Bill Smith

Thursday, June 25th - 10:00 a.m.

Doors Will Open at 9:00 a.m.

Pritchard Laughlin Civic Center — In the Galleria
Glenn Highway (US 40 W at I-70) Cambridge, OH

FOOD WILL BE AVAILABLE

Auctioneer: Craig Connelly

Owner: Phyllis Smith

Auction Catalogs will be available on or before May 1st - Send large, 55-cent SASE
Phyllis D. Smith, 4003 Old Columbus Road, Springfield, OH 45502-8802
Phone: (937) 323-3888

National Cambridge Collectors Inc
PO Box 416
Cambridge OH 43725-0416

<http://www.cambridgeglass.org>
e-mail: NCC_Crystal_Ball@compuserve.com

FIRST CLASS MAIL
U.S. POSTAGE
PAID
PERMIT NO. 1
CAMBRIDGE, OH

FIRST CLASS MAIL

Membership Renewal Notice

**If the date on your address label is 6-98,
this is your LAST ISSUE of the Crystal Ball.
Please take a moment and renew now. Thank you!**
