



Cambridge Crystal Ball

Published monthly by National Cambridge Collectors, Inc.
to encourage and report the discovery of the elegant and boundless product of the
Cambridge Glass Company of Cambridge, Ohio

Issue No. 305

September 1998

Hard Work and Hope...

Progress in the Flood Recovery Continues

The National Cambridge Collectors' Museum of Cambridge Glass on U.S. 40 east is closed for the season due to the severe flooding that could be seen in the last issue of the *Crystal Ball*. A total depth of 65 inches of floodwater filled the museum. The building incurred extensive damage and will never be used again to display glass. Establishing a museum once again may require a new location and will take much time and extensive preparation.

The club thanks all the members and friends for their assistance and contributions throughout this flood recovery period. Many people volunteered countless hours under extreme conditions.

(Continued on page 8)

Inside This Issue:

Thanks for All the Help!
Pioneering in Quality Glassware at Cambridge
June Annual Meeting Minutes
The Silver Figurehead - Part II
A Convention to Remember



ABOVE: John Corl (left) and Tarzan Deel (right) at the Great Northeast Show. News and photographs of the Cambridge flood and the NCC Museum was spread at the Cambridge booth. Donations and book sales were great!



ABOVE: Mike Neilson (left), Cindy Arent, and Charles Upton (right) select NCC Museum glass to display in the temporary "mini" Museum set up in Penny Court Antique Mall in Cambridge, OH.

Cambridge Crystal Ball

Official publication of National Cambridge Collectors Inc., a non-profit corporation with tax exempt status. Published once a month for the benefit of its members. All rights reserved; reproduction in whole or in part without written permission of NCC and the author is prohibited.

Membership is available for individual members at \$17.00 per year and an additional \$3.00 for associate members (12 years of age and older, residing in the same household). Of the master member dues, \$12.00 is credited to a one-year subscription to the *Crystal Ball*. All members have voting rights, but only one *Crystal Ball* per household. **Multi-year memberships are available: 2 years for \$33.00, 3 years for \$49.00.**

1997-1998

OFFICERS AND COMMITTEE CHAIRPERSONS

President	Richard D. Jones
Vice President	Tarzan Deel
Secretary	Lynne Verbsky
Treasurer	Charles Upton
Sergeant-at-Arms	Tarzan Deel
Acquisitions	Kelvin Moore
Budget & Finance	Dennis Snyder
By-Laws	Bud Walker
Corresponding Secretary	Charles Upton
Technology	Tarzan Deel
Membership	Jeff Ross
Museum Expansion/Relocation	Willard Kolb
Museum Facilities	Carl Beynon, Joe Miller
Museum Interior	J.D. Hanes, Marybelle Teters
Non-Glass Items	Tarzan Deel
Nominating	Joy McFadden
Program	Bill Hagerty
Projects	Bill Hagerty
Publications	Mark A. Nye
Publicity	Cynthia A. Arent
Study Group Advisor	Marybelle Teters
1998 Convention	Mark A. Nye, Bud Walker
1998 Auction	Lynn M. Welker
1998 Glass Show	Mary Beth Hackett, Joy McFadden
1998 Glass Dash	Bud Walker
<i>Crystal Ball</i> Editor	Lorraine Weinman
<i>Crystal Ball</i> Circulation Directors	Lisa and Mike Neilson
WebMaster	Don Stevens

Internet website: www.cambridgeglass.org

DUE TO THE RECENT FLOODING IN CAMBRIDGE, OHIO, THE NATIONAL CAMBRIDGE COLLECTORS' MUSEUM OF CAMBRIDGE GLASS AT 9931 EAST PIKE ROAD WILL NOT BE OPEN UNTIL FURTHER NOTICE.

ADVERTISING RATES

Display Rates (camera ready ads preferred)

Unit	Members	Non-Members
Full Page	\$45.00	\$60.00
3/4 Page	\$35.00	\$50.00
1/2 Page	\$25.00	\$35.00
1/4 Page	\$15.00	\$25.00
1/8 Page	\$10.00	\$15.00

(\$5.00 additional if a photograph is included in display ad)

Classified Rates

10 cents a word \$2.00 minimum

Abbreviations and initials count as words. Type sizes cannot be mixed in classified ads. **Payment in full must accompany all ad copy.** Contact Editor for copy assistance.

Dealer Directory

Six Line Maximum \$24.00 for 12 month contract

Also included - Listing on our Internet site at:

www.cambridgeglass.org

Cambridge *Crystal Ball* assumes no responsibility for items advertised and will not be responsible for errors in price, description, or other information.

Advertising copy, letters, articles, must be received by the 5th of preceding month to be considered for publication in the next issue.

Please address all correspondence (include SASE) to:
(or E-Mail NCC_Crystal_Ball@compuserve.com)

National Cambridge Collectors, Inc.

P.O. Box 416

Cambridge, OH 43725-0416

President Rick Jones 914-631-1656

or E-Mail Caprice0@aol.com

Vice President Tarzan Deel 540-869-3949

Secretary Lynne Verbsky 216-661-7382

NCC Museum: Phone and Fax 740-432-4245

Please notify us immediately of any address change.

Opinions or information stated in any signed article or letter printed in the *Crystal Ball* are those of the author and may not agree with National Cambridge Collectors, Inc. The Editor reserves the right to refuse and to edit any material submitted for publication to conform to the editorial style of the *Crystal Ball*. Members are encouraged to write to NCC and the *Crystal Ball* sharing their knowledge and questions!

President's Message



Thanks for All the Help!

Since we wrote the last *Crystal Ball* exactly four weeks ago, a lot has transpired and a lot of people have been giving their best for NCC.

First, I'd like to thank everyone for their nice comments about the August issue and the coverage of our flood misfortune. Particular kudos to Lorraine Weinman for putting together such an engrossing issue. Also, thanks to Mike Neilson, Mike and Cindy Arent (and Lorraine again), for their pictures of the museum situation ... pre, during, and after.

A picture does tell a thousand words and the pictures in this issue painted a vivid picture of a time of crisis, of people who risked everything to minimize the damage and save our museum, and of those, who immediately jumped in to begin the long, tedious, and painstaking process of recovery.

Immediately, volunteers came in from all over to help the clean up and inventory process. Members from the Dayton and Columbus areas were there when we needed them and offered to provide even more help. Then, as the weeks settled in, the brunt of the work was largely done by our members in the Cambridge area. There are many of them who made museum reclamation almost a daily event; from Marybelle Teters to Charlie Upton to Cindy Arent to Lynn Welker to J.D. Hanes. There were many others too numerous to name here, but on behalf of the entire membership, I'd like to thank ALL OF YOU for everything you have done.

Special note should be made of Bud Walker, who made a special trip from New Jersey and spent about 10 days working to dismantle shelf units and disinfect mold that was growing in the museum; and, of Janice and Larry Hughes, who were there at crucial times and helped in so many ways.

Many others of you have shown your support in various ways. From those of you who shared your thoughts about the museum on our website, to those who shared fundraising ideas and those who volunteered to contact government and charitable organizations to educate them about our plight and start the process for a new capital program. All of these efforts are very much appreciated.

We have heard from many local depression glass clubs

volunteering help. We owe you a "media kit" to help you educate your members and friends and will be working on that right away. Show promoters have volunteered to make the NCC Museum a focal point of their promotion and fundraising. The N.D.G.A. show resulted in over \$1,500 in donations and the Great Northeast Show over \$2,000. This help is greatly appreciated.

This month, the club set up temporary quarters for our museum in the Penny Court Antique Mall. Our thanks to Fran, Dick, and Anna Pavlov for being so supportive in so many ways. The Penny Court display sends a strong signal that we remain very much "in business" and remain ever more committed to our preservation and education mission.

We know that we could be taking even better advantage of all the persons who have volunteered to help. It's something we'll discuss at the August 21 NCC Board meeting and try to build a stronger plan.

This Board meeting is our most crucial in recent memory. The 12 people you elected to the Board are entrusted with helping to set the direction for where we go next. It is not an easy process and must be thoroughly discussed and planned. Further, we need and want the input from the membership on our plans for the future.

We are a national club but much of the responsibility for getting work done always falls on our Cambridge area members. Those of us who live "out of town" need to find ways we can help with the workload and create a proper balance. This is not me trying to sermonize; just a reality. Additionally, many people have volunteered to help and haven't been called. We need to do a better job in that area.

At our silver anniversary convention, we celebrated the accomplishments of those people so instrumental in building NCC and those with the vision and resolve to create a first-class museum. It is essential that we continue this tradition with respect for those who have helped build the club. And, it's only proper that we honor the legacy of the Cambridge Glass workers and their leadership, like Mary Martha Mitchell, who gave so much to all of us.

Bill



**SEND
AUCTION
LISTS
NOW!!**

Now is the time to send your
auction lists.
(DO NOT SEND GLASS)

Send your lists to:

AUCTION
c/o National Cambridge Collectors
P.O. Box 416
Cambridge, OH 43725-0416

**LISTS WILL BE ACCEPTED
SEPTEMBER 1 to OCTOBER 1, 1998**



1998 Calendar Planning

Mark your calendars now with these important events
during **NCC's 25th Anniversary Year**:

November 7

November Quarterly Meeting and
Education Program
Cambridge Country Club (tentative)
Cambridge, Ohio

Ladies In Distress!!

by Georgia Otten

Sometime during convention the following
Cambridge ladies were lost!
Can you find them?

They can be found across, backwards, up, down, and
diagonally. (Solution next month)

**CLEO
ETTA
MARTHA
ROSELYN
BETTY
GLORIA
LORNA
ROSALIE**

**DIANE
PORTIA
ROSE MARIE
ELAINE
MINERVA
MARJORIE
MARLENE**

D	I	A	A	H	T	R	A	M
I	V	R	E	M	J	O	S	A
N	A	J	R	Y	T	T	E	R
I	G	L	O	R	I	A	N	Y
G	L	C	S	E	N	V	I	L
P	I	O	E	L	T	T	A	C
O	M	C	L	E	O	D	L	B
R	J	P	Y	A	T	L	E	O
O	B	O	N	E	G	T	R	M
S	E	R	O	S	T	R	A	M
A	O	T	T	Y	P	O	R	E
L	M	I	R	M	I	S	O	L
I	I	A	C	A	M	E	L	A
E	N	E	L	R	A	M	G	V
T	E	C	A	J	R	A	M	N
T	R	T	G	O	T	R	O	S
E	V	A	C	R	A	I	D	Y
M	A	R	J	I	G	E	M	E
D	I	A	N	E	J	E	N	A

Pioneering in Quality Glassware at Cambridge

by Mark Nye

"Courage, Fundamental Factor In Progress of 25 Years at Cambridge, is Not Lacking Where New and Quality Wares Are Concerned.

Arthur J. Bennett's Inspiring Leadership Has Prevailed Through Stress and Tumult.

Improved Factory Equipment and New Fuel Supply To Help Better Wares.

Just what factor stands out in carrying a glassware factory through nearly 25 years of growth, helping it overcome great difficulties and enabling it to improve steadily its product, in short, what makes it successful, perhaps often has aroused interest and speculation.

That factor is courage when The Cambridge Glass Co. is considered.

Twenty-five years ago The Cambridge Glass Co. was founded in a period of overgrowth in the glassware industry. Its first operation was imperiled by failure of its natural gas supply. Today it is again using its own gas, but with sufficient quantity apparent assured.

It took courage to overcome those first difficulties as it did to live through and carry on in the financial troubles which came later. Also it took courage a few years ago to discontinue lines which meant \$100,000 worth of orders a year to the factory and substitute better wares for a different market.

Looking into the progress of The Cambridge Glass Co. in the years of struggle as well as in recent 12 months, we find the guiding and inspiring figure of Arthur J. Bennett. His boys, Bennett's Boys, he says, helped him and are his reliance today. But the boys who have been associated with Mr. Bennett in the valley and on the hilltop declare it was his leadership.

To the fundamental quality of courage in the history of The Cambridge Glass Co. must be added the grace of cooperation between leader and lieutenants. The leader gave of his best and his utmost inspired his associates.

Today, The Cambridge Glass Co. is preparing to celebrate the 25th anniversary of its first piece of glassware. A quarter of a century has Arthur J. Bennett guided his factory at Cambridge in Guernsey County, Ohio. It has grown steadily, its products have a worldwide market and yet the ideal of the best quality in glass still

holds sway. Recent improvements in equipment are counted upon to still further facilitate the manufacture of glassware of ever increasing quality.

Early in the month of May, 1902, The Cambridge Glass Co. made its first piece of glassware. That jug or pitcher is still in existence... It was the forerunner of a great production in gold-encrusted glassware in the present day.

And yet the man who has guided The Cambridge Glass Co. over the last 25 years was not a manufacturer by training or experience. He who had been a buyer and importer of china and glass proved his ability in the field of production and there are few in any industrial endeavor in these United States who have carried on to a greater vision than Arthur J. Bennett.

Some there are in the glassware trade of today who will recall the activities of the National Glass Co., planned as a countrywide and all embracing combine of glassware factories. The only factory erected by the National Glass Co. was that at Cambridge, Ohio. In the latter part of 1901, The Cambridge Glass Co. was incorporated under the laws of Ohio as the operating company for the factory at Cambridge. Arthur J. Bennett was called from New York to take charge.

It was planned to have three melting furnaces of 14 pots each in the Cambridge factory but only one was completed when the first piece of glassware was made in May 1902. The first product was common pressed ware. The moulds available were those gathered from other factories of the National Glass Co.

One of the reasons for the location of the factory in Cambridge was that there was reported to be a good supply of natural gas. It is true there were gas wells but they were shallow. However, when the first fires were lighted and operations began, it was found the supply of gas was not sufficient. There was not enough gas to supply furnace, lehrs and equipment. A real problem for the new factory manager, but a few months before an importer of china and glass.

We have stressed the fundamental factor of courage. Determined not to be overwhelmed by this unsuspected development, Mr. Bennett obtained a supply of gas from a commercial company. As soon as the new source of

(Continued on page 6)

(PIONEERING IN QUALITY - Continued from page 5)

supply was assured, a gang of men was rushed into the field to make the necessary connections and before few realized what had happened, the Cambridge factory was launched insofar as a supply of fuel was concerned.

Came the panic year of 1907 and financial difficulties for the National Glass Co., resulting in its bankruptcy. For three years the position and future of the Cambridge factory was uncertain.

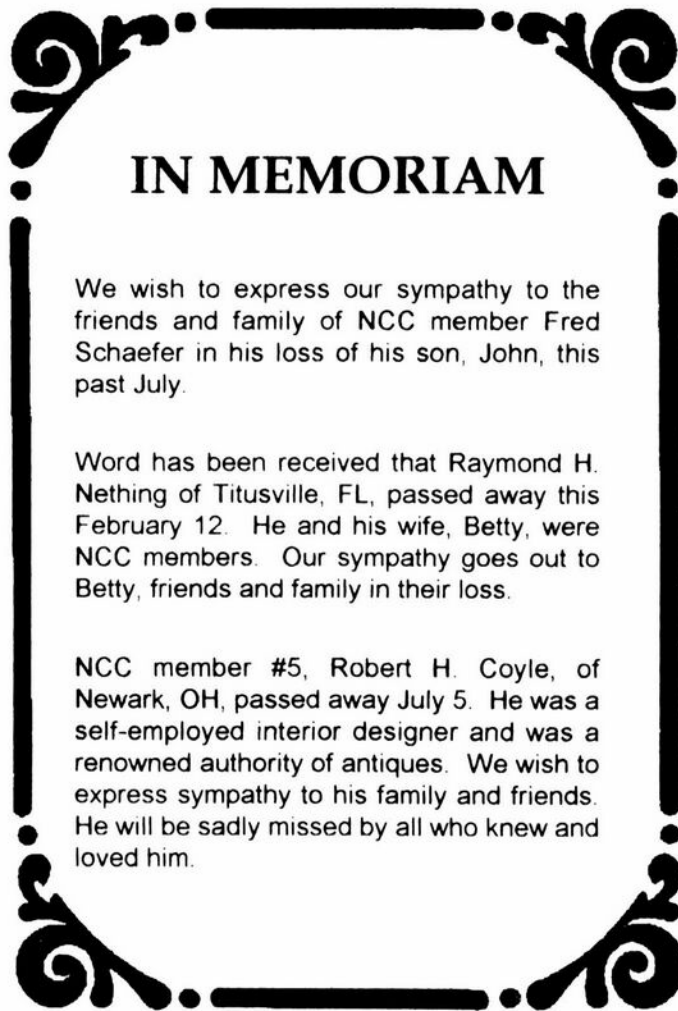
Courageously, Mr. Bennett continued operations. Conditions were adverse, the future of the plant in doubt, but the operating company, represented in Mr. Bennett, carried on. In the scrambled financial troubles of the National Glass Co., it appeared at one time that The Cambridge Glass Co. would lose its factory. Mr. Bennett went to Byesville, three miles from Cambridge, and with the assistance of the townspeople got control of a small plant there. It was smaller than the plant at Cambridge, but it was a factory where Mr. Bennett was safe from the financial alarms surrounding the closing days of the National Glass Co. debacle.

After a long drawn-out fight with the receivers and bond holders of the National Glass Co. an arrangement was finally effected whereby Mr. Bennett purchased the factory with all the machinery and personal property of The Cambridge Glass Co. This was a real burden to assume for any one individual, the total amount being well under \$400,000, of which \$50,000 was paid in cash and the balance carried about 50% in notes and mortgage bonds, maturing over a period of 10 to 15 years. This was an individual transaction on the part of Mr. Bennett and as accepted by the bankers, who had confidence in him, without any outside endorsement.

In reply to an inquiry as to why Mr. Bennett carried this proposition through as an individual and never attempted to sell stock, he stated he had a well defined idea of what he wanted to do and the policy outlined might not be satisfactory to outside stockholders and capitalist. Therefore, he preferred to take the entire risk and if it was success the profits accrued would help retire the obligations that much sooner. His prediction on this was sound for all of the obligations, including the mortgage bonds, were retired several years ahead of the time limit. And when all of these burdens were removed, then came the opportunity for a complete rearrangement of the capital structure, and the putting into effect the plans for the perpetuation of the business."

To be continued

The preceding, written by J.M. Hammer, was originally published in the December 27, 1926, issue of "CHINA, GLASS & LAMPS." It was first reprinted in the "Crystal Ball" during 1975 and 1976. It is reprinted here as part of the National Cambridge Collectors, Inc. 25th Anniversary Celebration as it was originally written in celebration of the Cambridge Glass Co.'s first 25 years.



IN MEMORIAM

We wish to express our sympathy to the friends and family of NCC member Fred Schaefer in his loss of his son, John, this past July.

Word has been received that Raymond H. Nething of Titusville, FL, passed away this February 12. He and his wife, Betty, were NCC members. Our sympathy goes out to Betty, friends and family in their loss.

NCC member #5, Robert H. Coyle, of Newark, OH, passed away July 5. He was a self-employed interior designer and was a renowned authority of antiques. We wish to express sympathy to his family and friends. He will be sadly missed by all who knew and loved him.

WE CLEAN CLOUDY GLASS! SATISFACTION GUARANTEED

Yes, it is true that we really can restore the interior of your cruet, vase, decanter and other internally etched items back to near original condition!

We do not oil, wax or cover up the sickness in any way! We actually remove it.

No items are too sick to clean! If we cannot clean an item to meet your satisfaction, the cleaning is FREE!

Send no money up front. When we return your item a bill will be enclosed for the postage and cleaning. If you are not satisfied, only the return postage is requested.

Most items clean in 6-8 weeks. All glass is handled and cleaned at your risk. Some very cloudy items may take several additional weeks.

Cruet	\$20.00	Cocktail Shaker	\$30.00
Vinegar & Oil	\$25.00	Salt Shaker (one)	\$25.00
Cologne	\$20.00	Salt Shaker (pair)	\$35.00
Decanter	\$30.00	Water Bottle	\$30.00
Vases (under 12")	\$25.00	Lavender Jar	\$20-30.00

Ship to: **Kim Carlisle & Associates**
28220 Lamong Road, Dept. C
Sheridan, IN 46068
(317) 758-5767

NATIONAL STUDY GROUP REPORTS

Study Group #16 Elegant Glass Collectors

The Elegant Glass Collectors met June 24, 25, and 26, 1998, at the Budget Host/Deer Creek Inn in Cambridge, Ohio. Members attending were: Pam Earussi, John Corl, Laura Tracy, Bud Walker, Anna Walker, Ed Chamberlain, Diane Chamberlain, Bonnie Stevens, Don Stevens, Charles Weeks, Loretta Weeks, Lewis Elford, and Carol Elford. Guests were: Lynne Verbsky, Cliff and Lydia McNeill, Willard Kolb, Dick Stark, Kelvin Moore, and Ginnie Griffith.

We met to renew friendships, admire Cambridge Glass and discuss - What Else - Cambridge Glass. At a magnificent Show & Tell in the lobby of the Budget Host, we were treated to Silver Overlay articles to be displayed at the Dave Fairbrothers seminar. Kelvin showed a rare Ebony vase, handpainted with roses by Ms. Prettiman. This ware only produced for one year. A Peachblo cocktail shaker and small footed glasses, etched Hunt Scene, were displayed. Much conversation was generated that evening, and the following evenings, around the table. Also, early morning coffee was available for two mornings in John Corl's room for "Early Birds." What a Silver Convention, only marred by the rain and destruction.

Upcoming Meetings:

- Sept. 27 - Extravaganza/
Charles and Loretta Weeks' Home
- Oct. 25 - Laura and Windsor Tracy's Home
Subject: Etchings
- Nov. 20-22 - Eastern National Antiques Show,
Harrisburg, PA
Etchings Display

— submitted by Pam Earussi

To accomplish great things,
we must not only act, but also dream,
not only plan but also believe.

—ANATOLE FRANCE

Study Group #16 Elegant Glass Collectors

On August 8, 1998, members of the Elegant Glass Collectors met at the Great Northeast Depression Era Glass and China Show, Westchester County Center, White Plains, NY. Members attending were: Pam Earussi, Charles and Loretta Weeks (who had to stay in their booth), John Corl, Sharon Renz, Brad and Denise Bernstein, Ken and Jane Filippini, Leslie and Bill Connors, and Diane and Don LaTourette. Guests present were: Marge and Emil Kleeman.

After a brown-bag lunch in the parking lot, of course the discussion centered on the Cambridge flood, and what can be done for the Museum. Leslie and Bill recommended a new Scotty bookend be put out by the club, and it would appeal to NCC members as well as to Scotty Collectors. She estimated 300-400 in the Wee Scotty Collectors would be interested in purchasing. Suggested colors were red, carnival, and slag. Leslie then showed two bookends she had purchased just that day at the show; one with an original Cambridge sticker in Crystal and the other in Frosted Crystal.

John reported he'd sent \$50 in memory of Mary Martha Mitchell from our study group.

Charlie invited everyone to his "bungalow" after Extravaganza on Sunday, September 27. He asks that we each bring a piece of glass for an auction to help raise money. The price is to be around \$6 or \$7 in cost. We could use Willard to boost our tally.

Many people stopped by the Cambridge Display Table and remarked on the devastation and the work involved so that glass would survive. Contributions were made by concerned glass lovers and members.

Our meeting in October will be at the home of Windsor and Laura Tracy. We will see their collection of Portia, as well as be planning for the display at Harrisburg, PA, November 20-22. We hope to see you there. Our theme will be Etchings of Cambridge.

— submitted by Pam Earussi

June Annual Meeting Minutes

Pritchard Laughlin Civic Center
Cambridge, Ohio
June 28, 1998

President Rick Jones called the meeting to order at 9:43 a.m. The members voted to waive the reading of the March Quarterly Meeting Minutes and to approve them as published in the *Crystal Ball*.

Charles Upton presented the Treasurer's Report and gave us the balances of our funds as of April 30, 1998: Operating Fund, \$63,667.96; Museum Fund, \$52,579.82; Building Fund, \$42,915.41; and Endowment Fund, \$1,198.98, which will jump after today. These total up to \$160,362.17.

Dennis Snyder added to Charlie's report by stating that the fund totals represent cash and investments only and do not include the other assets. This is our really liquid position. Our overall net income in 1997 was \$26,400 as compared to \$13,650 in 1996. This is almost doubled, making it quite an accomplishment. This year so far, our net income is \$12,636 as compared to last year's net income through April, \$7,045. Our financial health is very strong and it is the strongest that it's ever been. Our challenge is to manage this amount of money. Dennis reviewed the goals which he had presented to us last year: (1) All liquid assets are in a sweep account, bringing them all under one roof. (2) The membership is being kept informed of our financial position. (3) We have a working budget in place.

We have engaged the services of a local brokerage firm, Edward Jones, and our investment broker, Pete Mikula, spoke to us next. He displayed a pyramid chart and distributed a similar handout showing five categories in which investments should be divided. This showed the recommended percentages along with the actual percentages that the NCC has invested in each category. Our total portfolio has increased by 10% since we started in October of 1997.

The following committees had reports or discussion:

Acquisitions: Kelvin Moore would like you to send him e-mail if you see glass for sale or if you want to sell glass. Lynn has given Kelvin an updated list of what is in the Museum. We will continue to publish a "Want List" in the *Crystal Ball*.

Ken Rhoads mentioned a large collection going up for sale in the near future, and he asked if the club would be prepared to do anything if such a situation did occur. Rick Jones stated that it will be discussed at the NCC Board meeting, and that we could maybe do a feasibility study to see if there was any way possible for us to purchase a large collection.

(Continued on page 16)

(HARD WORK AND HOPE - Continued from page 1)

NCC, Inc. is dedicated to the preservation and study of Cambridge Glass and as the president, Rick Jones, stated in his message last month, "A museum is a cornerstone to a collector's club." Our "club" must remain open and accessible to the community. Therefore, a temporary museum has been established in a booth located at the Penny Court Antique Mall, 637 Wheeling Avenue, Cambridge, OH. Through the hard work of some of the local members, a colorful display of Cambridge glass has been arranged. Former museum items are available for sale such as: books about Cambridge glass, convention souvenirs made from Cambridge molds, copies of original glass company pamphlets, and membership forms. Many people are visiting the NCC Museum booth and are purchasing items. The club is remaining visible.

Cleanup work is still going on as can be seen in the photographs on page 9. Many people are still putting in long hours. We are thankful for their dedication and appreciate their time and effort.

Cambridge, OH, is not the only place where hard work is going on to help in this time of flood recovery. There have been two major shows (one in Texas and one in New York), so far, where word has been spread about our museum's plight. Photographic displays and numerous conversations have been helpful. Thanks to those individuals who have helped in that endeavor. See the President's Message on page 3 for more details on these efforts.

In the coming weeks and months there is much to be done. You will be getting regular updates in future issues of the *Crystal Ball*.

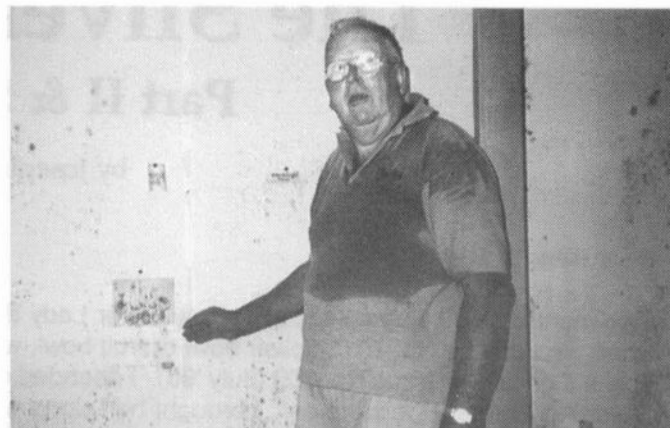
The club can be reached by calling (740) 432-4245, or by writing to NCC, Inc., P.O. Box 416, Cambridge, OH, 43725-0416.

**VISIT THE WEBSITE AT
www.cambridgeglass.org**

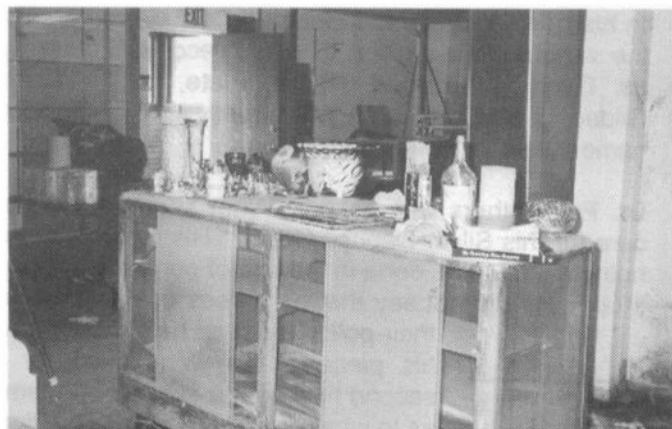
And the Work Continues at the Museum



Anyone working in the museum now needs to be aware of mold. Here J.D. Hanes wears his "mold mask." Fans have been running continuously in an attempt to dry and air out the museum.



Bud Walker, Carl Beynon, Marybelle Teters, and others worked for a full week removing cases. Here Bud stands by a molding wall where the Mardi Gras display previously had been.



View of the front room. Bud Walker dismantled this original sample room shelf and trucked it home to refinish



Just how muddy were the shelves? Marybelle Teters begins the cleaning process on one of many shelves.



Volunteers Doris Isaacs, Nancy Guegold, and Clarke West work diligently in the storage building.



Ward Teters works on cleaning and oiling the shelf brackets that once held our elegant glassware.

Triangle-C Finds

The Silver Figurehead

Part II & Silver Deposit

by Joseph A.A. Bourque Sr.

Dear Reader,

Two months ago I was able to share my Silver Lady Sea Shell, and/or Line No. 3011 flower bowl or fruit bowl, with you in *Crystal Ball* Issue No. 303 (July '98). I attended our Silver Anniversary Convention. I brought her along with me, as Chairman Mark Nye had requested members to bring along unusual silver decorated items needed for a display. Some members requested I bring along certain items I had written articles about so they could see them. Rather than just bring along certain pieces, I decided to bring along each piece that I had written an article on during the past year.

Upon arriving at the convention I left the Silver Lady with Chairman Nye, and he placed her on display. I received the Chairman's permission to display the other articles I had brought along on a table in front of my motel room during the picnic. They received a lot of attention and kept me busy for four hours.

My wife and I enjoyed the convention very much, and wish

to convey a heartfelt thank you from both of us to Chairman Mark Nye and his convention committee for a job well done. In spite of the unusual weather, Mr. Nye saw to it that each indoor event took place, and on time.

For those of you who were unable to attend the convention, I will try my best to relate the salient facts delivered to us by the most learned person on Silver Decorated Glass, doctor and professor David E. Fairbrothers, who was the Silver Anniversary Convention speaker.

In his opening statement, learned Dr. Fairbrothers listed the various names given to silver decorated glass such as: Overlay, Applique, Resist, Plate, Lustre, Coated, Gilded, Leafed, etc., none which really apply. The correct name to use is: **Silver Deposit**.

Dr. Fairbrothers was asked: "What should be done to care for this Silver Deposit Glass?" His reply: "They say nothing should be done in the line of polishing or shining it up." He did not say that he agrees or disagrees with their policy, but that he elects to polish his pieces. He was asked for the second time by the same NCC member as to what should be done in the line of care. Several people were speaking and asking questions at the same time and the question went on unanswered.

At this point, I got the doctor's attention and said: "Doctor, I own some Cambridge Silver Deposit items that have turned black-blue from years of oxidation. I am the type of collector who does not believe in taking away any of the old patina by polishing or shining it." His answer was delivered to me loud, clear, and very quickly as he said: "By all means, don't do anything to it if you wish to keep it that way." Then he added: "Understand, however, that it is not the oxygen in the atmosphere that darkens the silver, it is the sulfur in the air that causes silver to turn black." He went on to say: "To maintain the old look, wash it with a soft brush in a mild

(Continued on page 11)



FIGURE 1

(SILVER FIGUREHEAD - Continued from page 10)

detergent solution, rinse it off well, and pat it dry with a soft absorbent cloth.

My next statement/question to the college professor with the doctorate was: "I have been informed by more than one person that if I allow the age-old patina to remain, it will eventually become pitted. Could you please comment on this?" At this point dear readers, pay very close attention to this wise man's answer, as it is a classic. He said: "It is not leaving the tarnish on that will cause pitting on your silver, it is the process of using silver polish on your silver and not cleaning it off properly that will cause the pitting. Remember this: Silver polish contains acid, and acid causes pitting. After polishing, make sure that you remove all of the polish."

The doctor gave another bit of good advice. When polishing your Silver Deposit Glass (should you elect to do so), never polish it nor buff it off with cloth, as the threads of the cloth will get caught under the sharp or fine points of the silver design and will cause them to pull up and break. How true this is. I have noted this damage time and time again.

The doctor shared some more of his knowledge by explaining how Silver Deposit was placed on glass objects. This subject was most interesting, and I will make an attempt to explain the system strictly from a layman's viewpoint. Suffice it to say that a flux containing silver particles and a gluing agent is made that will allow electricity to flow through it. The design to be made is drawn or stenciled on the glass with the flux, and is allowed to dry and become glued to a glass item. A silver ingot is connected to the one electrical direct current anode that will flow to the other anode. A conduit wire is connected to the ingot and one end of the silver flux design. A conduit wire from the opposite end of the design is wired to the opposite DC anode. The item containing the silver flux design along with the silver ingot are completely submerged in an acid bath.

The electrolysis process then begins. The acid bath starts to eat into the silver ingot. The electrical flow carries the silver particles being discharged from the ingot to the silver flux design on the glass where they become attached to the silver in the flux or the design to be silvered. After approximately four hours, enough silver is taken from the silver ingot to become attached to the silver flux to form a choice Silver Deposit design.

The speaker also made mention of a special type of silvering to glass that never needs cleaning. The Silver Deposit is applied in the regular manner. The silver ingot is then replaced with a platinum ingot. This causes the Silver Deposit decoration to become coated or plated with PLATINUM, which will never tarnish. This process is rarely found, however, because it is quite expensive to make.

The doctor explained that before buying a piece of Silver Deposit, a close examination ought to be conducted paying close attention to the condition of all of the edges of the design, to ensure that none of the edges are "erode," a condition that shows edge damage because of improper workmanship. All edges of the silver should be tight and "glued" to the glass. He stated that he would never buy an "erode" piece of Silver Deposit, as the condition worsens with age.

The sage professor, when finished with his lecture, gave us some extra time by answering some of our personal questions. I showed him the front page of the July issue of the *Crystal Ball* depicting the Flying Silver Lady and one of the two Silver Deposit seahorse designs. (It may have been my imagination, but I felt he enjoyed being called professor as opposed to being addressed as a doctor). "Professor," I addressed him. "To whom do you attribute the making of this seahorse design?" (See Figure No. 1) I was as tense as the main mast of a triple-masted schooner in an Atlantic squall. Without hesitation he said: "Rockwell." "Thank you, Professor," said I. (He had agreed with my own personal silent opinion.)

I was elated. -- The Triangle-C jitters came and went, and I actually became thrilled to think that my Fathers' Day gift from my lovely daughter, Darlene, was a gem of gems in the 3011 Line or the Sea Shell Line, and that the maker of the Silver Deposit was the work of The Dean of Glass Silvering, namely ROCKWELL.

It was at this point that I heard a voice state: "The Doctor was correct. Those seahorse designs were made by Rockwell." I turned around to see the face of the voice that was speaking. It was that of an old acquaintance, Willard Kolb, whom I first met at an NCC convention in the mid-1970s. We greeted each other. I then asked him how he knew that this seahorse silver decoration was a Rockwell product. In his hands, he actually held two small Crown Tuscan Sea Shell plates with Charleton decorations bearing the **exact design of the seahorse decoration also in Silver Deposit**. He simply said, "Take a look," as he handed me one of the plates in an inverted position. **The base of the plate bore the Rockwell signature in acid etching**. At this point I cannot express my feeling how everything fell into place so perfectly.

Dear Readers, take a good look at the seahorse design and remember what it looks like. You too may become a proud owner of a Rockwell Silver Deposit Cambridge Glass item.

Until next time,

Joe

In Memoriam

Mary Martha Mitchell



Mary Martha Mitchell was known to many of the members of the National Cambridge Collectors. She touched many lives and will be long remembered.

Mary Martha was employed at the Cambridge Glass Company from 1927-1960. She served as secretary to A.J. Bennett and later served as the last president of the glass company. She was also the co-founder of Variety Glass of which she was president from 1960-1984.

Ms. Mitchell was a lifetime member of National Cambridge Collectors, Inc., and member of the Guernsey County Humane Society.

In addition, she was selected for inclusion in "Who's Who in the Midwest" (1970-1971) and "Who's Who of American Women" (1968-1969 and 1970-1971). Mary Martha also received an award from the American Association of University Women in 1977 for contributions to the community, and she gave several programs on the history of glassmaking in Guernsey County.

Mary Martha was born Feb. 22, 1908 and passed away

The Rose Still Grows Beyond the Wall

Near a shady wall a rose once grew,
Budded and blossomed in God's free light;
Watered and fed by morning dew,
Shedding its sweetness day and night.

As it grew and blossomed fair and tall,
Slowly rising to loftier height,
It came to a crevice in the wall
Through which there shone a beam of light.

Onward it crept with added strength,
With never a thought of fear or pride,
It followed the light through the crevice-length,
And unfolded itself on the other side.

The light, the dew, the broadening view,
Were found the same as they were before,
And it lost itself in beauties new,
Breathing its fragrance more and more.

Shall claim of death cause us to grieve,
And make our courage faint or fall?
Nay, let us faith and hope receive, —
The rose still grows beyond the wall. —

Scattering fragrance far and wide,
Just as it did in days of yore;
Just as it did on the other side;
Just as it will forevermore.

A.L. Frink

July 5, 1998, at Southeastern Ohio Regional Medical Center.

She was preceded in death by a brother, Charles; three sisters, Betty Mitchell, Gwendolyn Cortese, and Margaret Thaxton. She leaves four nieces: Mrs. Michael (Cynthia) Arent, of Cambridge; Melinda Thaxton, of Fort Wayne, IN; Lori and Lisa Mitchell, of Los Angeles, CA; a nephew: Charles Albert Cortese, of Phoenix, AZ; a sister-in-law: Carolyn Mitchell, of Bridgeton, NJ.

The poem above was read at her funeral.

We extend our deepest sympathies to Mary Martha Mitchell's family and friends. She was a great lady who will be missed. She led an interesting life and has left many memories with those whose lives she touched.

**LETTERS
FROM
MEMBERS AND
FRIENDS**

We would like to thank our NCC family and friends for the tremendous amount of support you gave to us during the passing of our Aunt Mary Martha Mitchell.

Without your kindness and caring it would have made this difficult period of our lives much worse.

Our Aunt Mary Martha so enjoyed attending NCC functions and was able to meet and speak with many of you over the years. She thought you were all wonderful people!

Aunt Mary always stated that "A.J. Bennett would have been proud of the National Cambridge Collectors, Inc. and its dedication to the preservation of the history and glassware of The Cambridge Glass Company."

We will certainly miss her.

Sincerely,

Cindy and Mike Arent
and Lindy Thaxton



A Marriage Not Made in Heaven, Nor in Cambridge

Last year I purchased a Crystal 3400 footed cruet with what looked like a dollar sign, but with two lines through the "S." At study group, from John Corl and Anna Walker, I learned that what I had was an Ecclesiastical Etched Cruet (shown in the new Etchings Book).

Anna Walker had thought that Charles Upton knew where some cross-shaped stoppers could be located. Well, Charles knew, but those were display stoppers still attached to a bar, and belonged to Doris Isaacs. Charles did have a stopper, and when he visited the Harrisburg Show, he told me to bring the cruet to Convention, and maybe we could have a "marriage."

Eagerly I awaited the "match." Charles produced his cross stopper and I the cruet. Alas, his cross stopper was too large to fit the cruet. We had thought to donate it to the Museum if it matched. So, our "marriage in Cambridge" was not to be. Although disappointed, we had a lot of fun anticipating it.

Pam Earussi



**VISIT THE NCC WEBSITE
TODAY**

WWW.CAMBRIDGEGLASS.ORG

Silver Anniversary Convention



NCC Founders present at the dinner were: (left to right) Ed Ruby, Dick Pavlov, Charles Upton, John Wolfe, Gary Campbell, Fran Pavlov, Dale Snode, and Harry Allen



Enjoying lunch at Harold and Judy Bennett's museum are: (left to right) Norma Oliver, Helen Wilt, and John Wilt. NCC, Inc. provided a picnic lunch for those who took this opportunity to enjoy the museum.



Willard Kolb conducts the annual mini-auction. This is a fun and ever popular auction that once again was a financial success.



Mark and Phyllis Smith at the dessert preview at the Pritchard Laughlin Civic Center.



First in line for the opening of the Show & Sale: (left to right) Robert Powell, Rich Bennett, Mike Neilson, Jim Finley, and Nancy Finley.



Show and Sale Co-Chairs Joy McFadden (left) and Mary Beth Hackett (right) shortly before the doors open for the mad dash.

A Convention to Remember



The calm before the storm! Twenty-five dealers were set up in the Pritchard Laughlin Civic Center.



Dr. David Fairbrothers spoke about Silver Overlay to full room of interested convention attendees.



The ever popular Show & Tell and Bring & Brag sessions led by Lynn Welker were as usual a standing-room-only event.



Discussing the Bring & Brag glassware are: (left to right) Joe Bourque, Bud Walker, John Wilt, and Ken Rhoads.



President Rick Jones and Convention Chairman Mark Nye led a toast at the 25th Anniversary Convention dinner.



Silver Overlay was the theme of the Convention. This is one of the displays of Cambridge Glass with Silver Overlay decoration.

(JUNE ANNUAL MEETING MINUTES - Continued from page 8)

Budget and Finance: Dennis Snyder's report was given earlier, following the Treasurer's Report.

By-Laws: Bud Walker mentioned that some cumulative voting took place on several ballots, where one person received more than one vote on the same ballot. A proposed by-laws change will be made to make it clear that each person is only allowed one vote.

Corresponding Secretary: Charlie Upton asked that we please send an SASE when we ask for a reply and that we use our membership number.

Membership: Jeff Ross reported membership totals of 956 master members, 376 associate, 4 honorary, and 4 lifetime, for a total of 1,340. Our membership total is holding steady, but we are seeing a more involved membership, which is very important. Jeff is also seeing memberships come in from the Internet. This has opened a new door for us. Jeff is working on getting our permanent membership cards done, and they should be out in the next 60 days. Jeff has also been working on the regional membership program, which involves working with study groups. The Mid-Atlantic group made outstanding contributions this year. A dozen memberships were brought in at the Harrisburg show. Jeff named those members who had passed away during the year, and we had a moment of silence for them. Those members are: Raymond Nething, Bill Harbaugh, Ronnie Borem, Ralph Leslie, Dorothy Oldham, Bill Frost, Mildred "Midge" Hughes.

Ken Rhoads asked if we could set up our website so people could join with charge cards. At this time, we are not taking charge cards for anything, but this is something we could consider for the future. More discussion on this topic is under the Webmaster's report. Jeff mentioned that we will be going back to using a letter asking why someone does not renew their membership. We had been getting answers that were mainly the same, but when the letter technique was dropped, our number of nonrenewals went up by six to eight per month. Mark Nye also mentioned that people collecting a certain pattern may not renew if they do not see their pattern in the *Crystal Ball*.

Special Announcement: At this point in our meeting, President Rick Jones announced that Guernsey County was under a State of Emergency due to the weather, and that the glass show dealers were packing out.

Webmaster: Don Stevens discussed using credit cards to join the NCC on the Web. In order to do so, our Internet provider would have to provide us with a secure site, and this would cost twice as much. Don also reported that we are averaging 250 hits per day. Our site count does not count the same person twice, so our total is the number of different people who have visited. 3,500

new people have hit our site. We gave Don a round of applause for all of the work he has done.

Museum Expansion and Relocation: Willard Kolb informed us that a set of plans has been drawn up for the property which he has been looking at. This is the property which is not for sale yet and still tied up in an estate.

Museum Facilities: Carl Beynon mentioned the dampness that he has to deal with.

Museum Interior: Marybelle Teters reported that all of the glass in the museum has been cleaned this year, and she is working on paperwork. She thanked Shirley Beynon, who was helping clean glass two days a week, and Marybelle also thanked Jeff Ross and Sharon Miller who helped. Marybelle thanked everyone who made donations. This year, 220 people have visited the museum, but we do not have an accurate count for June. Marybelle would like six strong guys to take the glass doors out of the cases so she can clean the inside of the doors.

Special Motion: At this point a motion was passed to dispense with the rest of the meeting unless someone really needed to communicate something of importance.

Publications: Mark Nye needs help with book value guides. This summer, we need to update value guides for "*Colors in Cambridge Glass*," "*Cambridge Rose Point*," and "*Cambridge Caprice*."

1998 Glass Dash: Bud Walker thanked all who helped and stated that the dealers did an outstanding job. A total of \$2,817.85 was made from the 1998 Glass Dash, which will go to the Museum Fund.

Program: Bill Hagerty informed us that the November 8 Quarterly Meeting at the Cambridge Country Club, Cambridge, OH, will feature a program on other glass companies.

Projects: Bill Hagerty reported that over 500 pair of salt and pepper tops have been sold, and that an ad has been placed in the *Heisey News*.

1998 Convention: Mark Nye clarified that the Friday lunch was provided by the NCC.

Old Business: None.

New Business: A suggestion was made to consider the length of our programs so they do not run too long for some people.

The meeting was adjourned at 10:29 a.m.

Respectfully submitted,
Lynne R. Verbsky, Secretary

CAMBRIDGE GLASS BOOKS FOR SALE

By National Cambridge Collectors, Inc.

Colors in Cambridge Glass

128 pages, 60 color plates, full index. Hardbound w/valueguide..... 19.95

1910 Nearcut

108-page reprint of original 1910 catalog. PB w/valueguide..... 14.95

1930-1934 Cambridge Glass Co. Catalog Reprint

250-page reprint of original catalog. PB w/value guide..... 14.95

1949-1953 Cambridge Glass Co. Catalog Reprint

300-page B&W reprint of original catalog. B&W paperback with value guide..... 14.95

1940's Cambridge Glass Co. Catalog Reprint

250-page reprint of original catalog and all well known supplemental pages. Drilled, ready for placement in your own three-ring binder. Due to its size, the reprint does not include a value guide B&W. 34.95

Cambridge Rose Point by Mark Nye

94-page book listing of Rose Point from several sources: catalogs, trade journals, price lists, etching plates, and other surviving company records. One of the most popular lines of The Cambridge Glass Company, showing the many blanks on which Rose Point might be found along with the history and production life of the line. B&W paperback with value guide..... 14.95

Etchings by Cambridge, Vol. 1 By the Miami Valley Study Group

84-page book showing samples of plate etchings applied by The Cambridge Glass Company. B&W paperback. Due to the style of publication this book does not have a value guide..... 14.95

The Home of "Near-Cut" Factory Post Card

B&W picture of The Cambridge Glass Company post card..... 50

Crystal Lady Video

Approximate 25 minute video copy of old Cambridge Glass Co. film showing the making of a goblet in the Cambridge factory..... 15.00

Rose Point Value Guide (Included with Rose Point Book purchase)

Updated value guide only, includes postage..... 5.00

For N. C. C. Members, the above publications at a 10% discount

Other books on Cambridge Glass

Cambridge Glass 1927-1929 by Bill and Phyllis Smith

66-page reprint of original catalog. B&W paperback with updated value guide..... 7.95

Cambridge Stemware by Mark A. Nye

167 page book showing as many known Cambridge stems known at the time of publication. B&W paperback. No value guide..... 19.95

Cambridge Glass Company by Mary, Lyle and Lynn Welker

120 pages of reprints from eight old catalogs. B&W paperback. No value guide..... 10.00

Cambridge, Ohio Glass in Color II by Mary, Lyle and Lynn Welker

15 Color plates showing choice pieces from their collection. Spiralbound. No value guide..... 5.95

Cambridge Glass Company 1903 by Harold & Judy Bennett

106-page reprint of original catalog. B&W paperback N/value guide 5.00

Reflections by the Degenhart Paperweight & Glass Museum

45-page book giving a history of all 18 glass companies in Guernsey County. B&W paperback with pictures..... 5.00 including postage

address orders to:

Books, National Cambridge Collectors, Inc.

P. O. Box 416

Cambridge, OH 43725-0416

Please add postage and handling to your order (first book, \$3.00; each additional book \$1.00). Ohio residents add 6 1/2% state sales tax.

Only check or money order. NO CASH, NO CHARGE CARDS.

Dealer Discounts Available. Please Write!

OTHER ITEMS FOR SALE FROM THE NATIONAL CAMBRIDGE COLLECTORS GLASS MUSEUM

Brochures:

Cambridge Arms.....	1.00
Cambridge Square.....	.25
Chantilly.....	.25
Laurel Wreath.....	.10
Lynbrook.....	.10
Martha.....	.25
Regency.....	.25
Rock Crystal.....	.10
Roxbury.....	.10
Star.....	.10

Please include SASE for above brochures

Cup Plates showing Cambridge Pencil dog in bottom. Made by Pairpoint in Crystal, Teal Green & Amethyst. Boxed..... ea. 2.00

Please include \$3.00 shipping & handling on each order

The following Convention Favors are marked with the N.C.C. name & yr

Convention favors

1984 Pink, 2 1/2 oz. Georgian Tumbler.....	2.00
1985 Amber, 2 1/2 oz. Georgian Tumbler.....	2.00
1986 Yellow, 2 1/2 oz. Georgian Tumbler.....	2.00
1987 Lt. Blue, Marjorie Punch Cup.....	2.00
1988 Cobalt, Cambridge Square Cigarette Holder.....	2.00
1989 Teal Green, Mt. Vernon Cordial.....	2.00
1991 Cobalt Blue, Mt. Vernon Cordial.....	2.00
1994 Crystal Iridized, Cascade Goblet.....	5.00
1995 Cranberry Ice, Cascade Goblet.....	5.00
1996 Carnival, Cascade Goblet.....	5.00
1997 Green, Opal Edge, Cascade Goblet.....	5.00
1998 Yellow Iridized, Cascade Goblet.....	5.00
Eagle book end, Fund raiser, Cobalt blue.....	30.00
Prism with "Cambridge" on one side. Fund raiser, Mint Julep.....	15.00

Please include \$3.00 shipping & handling on each order of 5 items

Books by Gene Florence

Hardbound color with value guides

Elegant Glassware of the Depression Era (Eighth Edition)..... 19.95

Shipping is \$3.00 for first book and \$1.00 for each additional book

Salt & Pepper tops, Polycarbon plastic, will fit most regular sized Cambridge shakers such as Rose Point fld and flat bottomed shakers. Also fit Heisey Rose, Saturn, Plantation, Crystalite and some Orchid. Fit some Anchor Hocking and Candlewick. made from the same material used to make taillight lenses for autos.

Price: 1 to 9 pairs @ \$6 per pair - 10 or more pairs @ \$5 per pair

Shipping & Handling is \$3.00 per order on S&P tops

Send all orders to:

National Cambridge Collectors, Inc.

P. O. Box 416

Cambridge, Ohio 43725-0416

~ GLASS ~ MARKETPLACE

Classifieds

WANTED: Rare or unusual pieces of Cambridge Glass especially Opaques or Carnival. Also Cambridge Art Pottery. Top prices for outstanding pieces. **Call collect 609-965-2413.**

WANTED: "Any piece of Cambridge Etch 520, in pink." Please e-mail at dhmjh@ibm.net or phone (714) 538-6656. Thanks. Mary Jane.

FOR SALE: Cambridge Nude 9 1/2" Ivy Bowl - Red. \$285.00. **Sam Miller, (626) 333-6250, 1021 N. Indian Summer Ave., Valinda, CA 91744.**

Bogart's Bed & Breakfast

62 W. Main Street, New Concord
New Concord lodging in 1830 Federal
Style home, decorated with
antiques throughout.



Bogart's Antiques

7527 E. Pike, Norwich OH
Quality Antiques Bought & Sold

OWNERS: Jack & Sharon Bogart
872-3514 or 826-7439

Salt & Pepper Tops For Sale

Plastic tops to fit most Cambridge,
such as Rosepoint ftd. and flat-bottom shakers.

Also fit Heisey Rose, Saturn, Plantation,
Crystalite and some Orchid.

Fit some Anchor Hocking and Candlewick.

(CAUTION - do not force on as they will crack)

Made of polycarbon, the same material used to make
taillight lenses for autos.

Price: 1 to 9 pairs @ \$6 per pair
10 or more @ \$5 per pair

ON SALE NOW THROUGH NCC, INC.
(see Page 17 for ordering information)

Please add \$3.00 for shipping & handling.

The DAZE Inc.

SPECIAL OFFER
to NCC Members
\$2.00 OFF
The 1 Year Subscription price
shown on this form or copy of it.

The Original National monthly newspaper dedicated to the buying, selling and collecting of American made glassware china, and pottery from this century. We educate and inform you each month with feature articles by top notch writers, readers letters, club happenings, reproduction news, show reports and there are hundreds of dealers to help you fill in the missing pieces of your collection. "Keep up with what's happening" . . . Subscribe today!

Name _____

Street _____

City _____

State _____ Zip _____

1 year \$21.00 2 years \$40.00 \$2.00 Single Copy

Subscription Hot Line: 1-800-338-9927

Exp. Date _____ Card No. _____

Signature _____

Orders to:

The Daze, Inc., Box 57, Otisville, MI 48463

Please allow 30 days for your first issue - Canadian Subscribers, add \$1.00 per year and subscribe by charge card only! This Special Offer may not be combined with any other special offer.

Offer Expires December 31, 1998



Stems Without Thorns

As the world's largest supplier of discontinued and active china, crystal, flatware and collectibles, Replacements, Ltd. has over 325 different patterns of Cambridge crystal.

And however much we enjoy selling pieces which were once thought irreplaceable, we love buying them as well. Thanks to people like you, our crystal inventory currently numbers in the hundreds of thousands, and the numbers keep growing every year.

So, if you've been unsuccessfully searching for that elusive piece of Cambridge - or any other type of fine crystal - call us for a free list of pieces available in your pattern. And, if you're looking to sell pieces you currently have, we can help you there, too.

REPLACEMENTS, LTD.

China, Crystal & Flatware • Discontinued & Active

1-800-REPLACE
(1-800-737-5223)

1089 Knox Road,
PO Box 26029, Dept. CB,
Greensboro, NC 27420

DEALERS



DIRECTORY

NOTE: When writing to the dealers listed here, please enclose a SASE!

<p>DAUGHERTY'S ANTIQUES Jerry and Shirley</p> <p>Antiques and Collectibles * Mostly Glass</p> <p>Shows & Mail Orders 2515 Cheshire No. 402-423-7426 Evenings Lincoln NE 68512</p>	<p>"HAPPINESS IS" Buddy and Kathy Stultz</p> <p>3106 Warren Court, Glen Allen, VA 23060 804-672-8102</p> <p>Specializing in American Made Glass We Buy & Sell, Shows & Mail Order</p>	<p>THE JONES GROUP Cindy Jones</p> <p>Buy and Sell Cambridge Glass 650 Riverside Drive Sleepy Hollow, NY 10591 914-631-1656 or E-Mail Caprice0@aol.com</p>
<p>Milbra's Crystal Buy & Sell Replacement and Matching Specializing in: Cambridge Fostoria Heisey and others</p> <p>Milbra Long (817) 645-6066 Emily Seate (817) 294-9837 PO Box 784, Cleburne, TX 76033 E-mail: longseat@flash.net</p>	<p>YOU CAN ADVERTISE YOUR ANTIQUE SHOP HERE!</p>	
<p>THE GLASS URN 456 West Main Street, Suite G Mesa, AZ 85201 602-833-2702</p> <p>Mail Order Shows Open Shop</p> <p>CAMBRIDGE, FOSTORIA, HEISEY, ETC.</p>	<p>ANTIQUES ON THE MALL SPECIALIZING IN CAMBRIDGE GLASS</p> <p>Bogart's - Bldg. #3 - Norwich, OH</p> <p>Virginia Bennett 740-432-4483 64183 Warne Drive, Cambridge, OH 43725</p>	<p>GATEWAY ANTIQUE MALL, INC. JUST NW OF MINNEAPOLIS-ST. PAUL, MN Next to Super 8 in Rogers, MN (I-94/101 Intersection)</p> <p>85 Dealers 7 Days, 10-6 612-428-8286 ELAINE STORCK, OWNER/DIRECTOR</p>
<p>THE DEGENHART PAPERWEIGHT AND GLASS MUSEUM, INC.</p> <p>P.O. Box 186 Cambridge, Ohio 43725-0186 Intersection of US 22 & I 77 Phone 740-432-2626</p>	<p>D & D ANTIQUES</p> <p>Columbus, Ohio</p> <p>Dick Slifko SHOWS ONLY</p>	<p>JAMESTOWN ANTIQUES 16 E. Washington St., Jamestown, OH 45335</p> <p>Rosepoint and Cambridge our Specialty Shows and Shop (chance or appt.)</p> <p>Buy (937) 675-6491 Sell Susan and Larry Everett</p>
<p>THE GLASS CUPBOARD</p> <p>P.O. Box 652 West End, North Carolina 27376</p> <p>Marcia Ellis Cambridge, Heisey 910-673-2884 Shows, Mail Order</p>	<p>JUDY'S ANTIQUES Judy Bennett 422 S. Ninth Street (Corner of Jefferson) Cambridge, Ohio 43725 Bus. 740-432-5855 Res. 740-432-3045</p> <p>CAMBRIDGE GLASS MY SPECIALTY</p>	<p>We Buy Cambridge</p> <p>Kelvin and Heather Moore 810 Red Mill Drive Tecumseh, MI 49286 Phone 517-423-0993</p>
<p>FINDER'S ANTIQUE HOUSE 3769 Highway 29 North Danville, VA 24540 (804) 836-6782 Cambridge-Heisey-Duncan-Fostoria</p>	<p>GREEN ACRES FARM 2678 Hazelton Etna Rd., Pataskala, OH 43062 (State Route 310 North)</p> <p>Sat & Sun 1-7 PM 740-927-1882 Antiques, Crystal Glass and Collectibles</p>	<p>CRYSTAL LADY 1817 Vinton St., Omaha, NE 68108</p> <p>Bill, Joann, and Marcie Hagerty Bus. 402-341-0643 Res. 402-391-6730 Specializing in Elegant Glass & Collectibles</p>
<p>YOU CAN ADVERTISE YOUR ANTIQUE SHOP HERE!</p>		<p>YOU CAN ADVERTISE YOUR ANTIQUE SHOP HERE!</p>
<p>MICHAEL KRUMME Cambridge and other elegant glassware</p> <p>(213) 874-GLASS e-mail: mkrumme@pacbell.net website: http://www.glassshow.com</p> <p>PO Box 48225 Los Angeles CA 90048-0225 Send your want list</p>	<p>Warren and Mary Welsh Cambridge & Other Elegant Glassware</p> <p>3635 Saddle Rock Rd., Colorado Springs, CO 80918 (719) 531-5866 WELS@EARTHLINK.NET</p> <p>MAIL ORDER SHOWS</p>	<p>MARGARET LANE ANTIQUES</p> <p>2 E. Main St., New Concord, OH 43762 Lynn Welker 740-826-7414</p> <p>Cambridge Glass Matching Service Hours Mon-Fri 10-12 AM, 1-5 PM or by Appointment</p>
<p>ISAACS ANTIQUES (740) 826-4015</p> <p>See our booths in Penny Court Mall in Cambridge and East Pike Antique Mall at Rt. 40, one mile west of I-70 Norwich Exit #164</p>	<p>ALADDIN LAMP BOOKS Free List Figurine Lamps Wanted Bill & Treva Courter</p> <p>3935 Kelley Rd. Kevill, KY 42053 Phone/FAX 502-488-2116</p>	<p>DEXTER CITY ANTIQUE MALL</p> <p>P. O. Box 70, Dexter City, Ohio 45727 (740) 783-5921</p> <p>Located on Ohio St. Rt. 821 Between Exits 16 & 25 off I-77 Just 30 min. South of Cambridge, Ohio</p>



**SEND
AUCTION
LISTS
NOW**

(SEE PAGE 4)



**PLAN NOW
to
Attend the
November
Quarterly
Meeting**

(SEE PAGE 4)

National Cambridge Collectors Inc
PO Box 416
Cambridge OH 43725-0416

<http://www.cambridgeglass.org>
e-mail: NCC_Crystal_Ball@compuserve.com

FIRST CLASS MAIL
U.S. POSTAGE
PAID
PERMIT NO. 1
CAMBRIDGE, OH

FIRST CLASS MAIL

Membership Renewal Notice

**If the date on your address label is 9-98,
this is your LAST ISSUE of the Crystal Ball.**

Please take a moment and renew now. Thank you!