



Cambridge Crystal Ball

Published monthly by National Cambridge Collectors, Inc.
to encourage and report the discovery of the elegant and boundless product of the
Cambridge Glass Company of Cambridge, Ohio

Issue No. 310

February 1999

1999 Auction Highlights

by Squeek and Dorothy Rieker



ABOVE: Amber Pitcher with six Tumblers

This promises to be another banner year for the Cambridge Glass Auction which benefits the Museum Fund. There is a wide variety of glassware to choose from, so we are sure everyone will find something to spark their interest! An overview of the more "unusual/desirable" items consigned to this year's auction follows.

If you are wanting to add some colored glass pieces to your collection (and who isn't), here are a few fine examples: 5. Crown Tuscan keyhole ivy ball; 37. Ebony 7" basket w/ crystal handle; 42. Forest Green cordial/favor vase w/ gold decorated foot; 76. Carnival Marigold inverted strawberry tumblers; 84. Primrose 5-1/2" basket; 92.-93.-94. "Cambridge Glass" advertising prisms in Amber, Pistachio, and Pink; 104. Violet Everglade 12" vase; 118. pair of Rubina 8" candlesticks; 121. Mulberry 1-lb. covered candy; 131. Bluebell turkey; 146. Milk Glass Martha Washington 32-oz. jug; 151. Heatherbloom Mt. Vernon comport; 154.-157. Forest Green, Carmen, and Royal Blue Pressed Rosepoint; 160. Amber perfume; 184. Opal decanter w/ stopper; 200. Mardi Gras 10" vase; 215. Azurite 4" ribbed nut dish; 228. Tahoe Blue bridge hound; 232. Windsor Blue 7-1/2" seashell flower holder; 247. Experimental Blue Opaque 5" seashell plate; 268. Amber shaded to Smoky Black Experimental Color 9-1/2" bowl; and 289. pair of Avocado 9" candlesticks.

(Continued on page 4)

Inside This Issue:

What a Great Country
"Glass Dash" News
It's a Small, Small World - Convention '99
Cambridge Confusion
Have A Heart
Scottie Dog Bookend Order Form

Cambridge Crystal Ball

Official publication of National Cambridge Collectors Inc., a non-profit corporation with tax exempt status. Published once a month for the benefit of its members. All rights reserved; reproduction in whole or in part without written permission of NCC and the author is prohibited.

Membership is available for individual members at \$17.00 per year and an additional \$3.00 for associate members (12 years of age and older, residing in the same household). Of the master member dues, \$12.00 is credited to a one-year subscription to the *Crystal Ball*. All members have voting rights, but only one *Crystal Ball* per household. **Multi-year memberships are available: 2 years for \$33.00, 3 years for \$49.00.**

1998-1999

OFFICERS AND COMMITTEE CHAIRPERSONS

President	Richard D. Jones
Vice President	Tarzan Deel
Secretary	Lynne Franks
Treasurer	Charles Upton
Sergeant-at-Arms	Michael Neilson
Acquisitions	Kevin Moore
Budget & Finance	Dennis Snyder
By-Laws	Bud Walker
Corresponding Secretary	Charles Upton
Technology	Tarzan Deel
Membership	Jeff Ross
Museum Relocation	Richard D. Jones
Museum Facilities	Carl Beynon, Joe Miller
Museum Interior	J.D. Hanes, Marybelle Teters
Non-Glass Items	Tarzan Deel
Nominating	Joy McFadden
Program	Bill Hagerty
Projects	Bill Hagerty
Publications	Mark A. Nye
Publicity	Cynthia A. Arent
Study Group Advisor	Marybelle Teters
1999 Convention	Mark A. Nye, Bud Walker
1999 Auction	Squeek and Dorothy Rieker, Tom and Noreen Kullman, Lynn Welker
1999 Glass Show	Mary Beth Hackett, Joy McFadden
1999 Glass Dash	Bud Walker, Mike Arent
<i>Crystal Ball</i> Editor	Lorraine Weinman
<i>Crystal Ball</i> Circulation Directors ...	Lisa and Mike Neilson
WebMaster	Don Stevens

Internet website: www.cambridgeglass.org

DUE TO FLOODING IN CAMBRIDGE, OHIO, THE NATIONAL CAMBRIDGE COLLECTORS' MUSEUM OF CAMBRIDGE GLASS AT 9931 EAST PIKE ROAD WILL NOT BE OPEN.

THE TEMPORARY NCC MUSEUM IS LOCATED IN PENNY COURT MALL IN DOWNTOWN CAMBRIDGE, OHIO.

ADVERTISING RATES

Display Rates (camera ready ads preferred)

<u>Unit</u>	<u>Members</u>	<u>Non-Members</u>
Full Page	\$45.00	\$60.00
3/4 Page	\$35.00	\$50.00
1/2 Page	\$25.00	\$35.00
1/4 Page	\$15.00	\$25.00
1/8 Page	\$10.00	\$15.00

(\$5.00 additional if a photograph is included in display ad)

Classified Rates

10 cents a word \$2.00 minimum

Abbreviations and initials count as words. Type sizes cannot be mixed in classified ads. **Payment in full must accompany all ad copy.** Contact Editor for copy assistance.

Dealer Directory

Six Line Maximum \$24.00 for 12 month contract

Also included - Listing on our Internet site at:

www.cambridgeglass.org

Cambridge *Crystal Ball* assumes no responsibility for items advertised and will not be responsible for errors in price, description, or other information.

Advertising copy, letters, articles, must be received by the 5th of preceding month to be considered for publication in the next issue.

Please address all correspondence (include SASE) to:
(or E-Mail NCC_Crystal_Ball@compuserve.com)

National Cambridge Collectors, Inc.

P.O. Box 416

Cambridge, OH 43725-0416

President Rick Jones	914-631-1656 or E-Mail Caprice0@aol.com
Vice President Tarzan Deel	540-869-3949
Secretary Lynne Franks	216-661-7382
NCC Museum: Phone	740-432-4245
Fax	740-439-9223

Please notify us immediately of any address change.

Opinions or information stated in any signed article or letter printed in the *Crystal Ball* are those of the author and may not agree with National Cambridge Collectors, Inc. The Editor reserves the right to refuse and to edit any material submitted for publication to conform to the editorial style of the *Crystal Ball*. Members are encouraged to write to NCC and the *Crystal Ball* sharing their knowledge and questions!

President's Message



What a Great Country

As is customary in December and January, we spend a lot of time writing acknowledgment, thanking those persons who have provided support, gifts and contributions to NCC over the past year. By the time you receive this issue, you should have received a letter from me if you were a 1998 donor. If not, please drop us a note c/o the museum post office box if your acknowledgment "slipped through the cracks." (And I apologize in advance for the oversight!)

This year, we have a marvelous new category of people who rallied around Cambridge, regional Depression Glass clubs and shows. Just after our flood, I was scheduled to attend the National Depression Glass Association Convention. It was a difficult decision, but at the urging of our Emergency Committee, I went ahead and made that trip to get the news out about the flood.

The courtesy shown Cambridge in San Antonio was exceptional, but it was nothing compared to what has happened since. Our Flood Relief and Building Fund projects had, by year's end, received over \$10,000 in contributions from Depression Glass clubs, both national and regional, and from glass shows.

I want to take some space to thank each and every club and all of their members:

Great Lakes Depression Glass Club
 The National Depression Glass Assn., Inc.
 Imperial Society
 Greater Tulsa Depression Era Glass Club, Inc.
 Arizona Depression Glass Club
 The Fenton Finders of Maryland.
 The Potomac Depression Glass Club
 Great Northeast Glass Show
 Fostoria Glass Society of North Texas
 Long Island Depression Glass Society
 Portland's Rain of Glass
 Depression Glass Club of Greater Rochester
 Valley Glasshoppers Depression Glass Club
 Houston Glass Club
 Valley Glasshoppers Depression Glass Club
 National Imperial Glass Collectors' Society Inc.
 Depression Era Glass Society of Wisconsin
 National Duncan Glass Society
 Michigan Depression Glass Society
 North Jersey Depression Glass Club
 Connecticut Cambridge Boosters

That is a total of 20 different organizations (yes, one did give twice, that wasn't a typo!) that to date have made contributions to our cause. Again, if I missed an organization we'll acknowledge them next month.

We understand that more groups are planning events or programs to benefit NCC. In particular, there is the Green River Show in Kent, Washington, in late February (thanks to Swede and Kay Larrison) and the Denver, Colorado Show in late April (thanks to Mike Horine, Tom Cotter, Don McLean and Tom Spencer). Cindy and I will be attending the Denver Show.

It is really special that so many people have looked for ways to help. It makes one proud to be part of our glass community. Even national organizations that want their own museum have helped us with ours. We look forward to the chance to reciprocate.

New NCC Board member, Mike Nielson, is spearheading an effort to raise money from local businesses. Congrats to Mike as he secured the first donation from Colgate Palmolive.

As of this writing in early January, we've received orders for 265 pairs of Scottie bookends. Our projects chairperson, Bill Hagerty, is placing our first order with Mosser and with any luck, we'll have them available for our annual auction the first weekend in March. If you haven't ordered yet, would you please consider it? You'll find an article from Bill and a Scottie dog order blank elsewhere in this issue. This program is well on its way to meeting and exceeding our goal.

There is nothing notable to report on the museum front as of now. We are still examining the finances to see if the Power Building option is feasible in the short and long term. We're sure there will be more news by auction time. We hope to see you that first weekend in March for our auction. Squeek, Dorothy, Tom, Noreen and Lynn have put together a first-rate program but it won't be complete without you there!

Bill



Variety! A Mardi Gras 10" vase, a Crystal centerpiece with prisms and an Amber Gloria cocktail shaker w/ crystal top are shown here



The opaques are well represented as can be seen by this display which includes Crown Tuscan, McBarlowe, Washburn Blue, etc.



Many stems are represented as can be seen in these items which include several pressed Rosepoint stems and a nude.

(AUCTION HIGHLIGHTS - Continued from page 1)

Some of the unusual decorated items available this year are: 46. Amber mayonnaise w/ gold-encrusted Blue Willow border; 55. Carmen Rosalie etch 8-oz. goblet w/ Crystal stem and foot; 79. Royal Blue goblet with gold silkscreen D1007-8 decor; 98.-99. toilet bottles, one etched Epsom Salts and one etched Boric Acid, with Ebony stoppers (these are hard to find); 109. Azurite 7-1/2" tall comport w/ #527 gold etching; 144. Amber etched Gloria cocktail shaker w/ Crystal top; 187. pair of Crown Tuscan gold-encrusted Rosepoint 6" 2-lite candlesticks; 191. Pink etched Hunt Scene 5-piece bridge set; 216. pair of Primrose 7" candleholders w/ gold sponge decoration; 219. gold-encrusted American Beauty etch tall sherbet, airtrap stem; 248. Bacchus etch 2-oz. sherry w/ unusual Amethyst flash decor; 258. Crown Tuscan gold-trimmed 3-part covered candy w/ painted chickens decoration; 266. Ham Bone 10" ashtray w/ "The Cambridge Glass Co." in gold on edge; 278. Ebony Decagon 2-handled bonbon w/ heavy gold-encrusted floral interior; 307.-308. Peach-Blo gold-encrusted Hunt Scene sherbet and goblet; and 319. Emerald Green gold-encrusted Hunt Scene 5-1/2 oz. cafe parfait.

Nude cocktails are available in a multitude of colors: Mandarin Gold, Forest Green, Moonlight Blue, Crystal w/ optic bowl, Amethyst, Pistachio, Mandarin Gold w/ Crown Tuscan stem, Mocha, Pink, and Tahoe Blue. Other nudes are represented by: 85. Forest Green brandy; 172. Crown Tuscan 5" shell comport w/ gold trim and Charleton decoration; 174. Crown Tuscan 7" shell comport; 252. Peach-Blo saucer champagne; 253. Forest Green claret; 254. Amethyst claret; and 255. Gold Krystol claret w/ optic bowl.

AUCTION NOTE
addition

There is an addition to the NCC Auction: a pair of **NCC Satin (Frosted) Ebony Scottie Dog Bookends**. This pair is from an earlier run made by National Cambridge Collectors, Inc. ALL proceeds for this item will go to the NCC Building Fund.

auction lists

If your *Crystal Ball* was damaged or incomplete, please let us know so that we can send you a complete list. Call Lynn Welker at (740) 826-7414, fax NCC at (740) 439-9223, or email NCC_Crystal_Ball@compuserve.com.

Crystal etched pieces are highlighted by: 28. Rosepoint 6" bread and butter plates; 49. Baroque etch 8-1/2" plates; 279. Diane hollow-stem champagne; 353. Apple Blossom 1-oz. cordials; 359. Stradivari/Regency Diane teas; 362. Minerva 2-handled 7" footed basket; 365. Portia 8-oz. marmalade and cover; 375. Rosepoint 13" bowl; 377. Rosepoint 80-oz. ball jug; 379. pair of Rosepoint 4" candlesticks w/ Ram's Head; and 382. gold-encrusted Wildflower 8" 3-compartment box w/ cover.

Other items of interest might be: 19. Bluebell dresser compact; 22. Topaz cat bottle; 73. Near Cut 11" 2-handled vase; 113. Windsor Rock Crystal cut 12" bowl; 115.-116.-117. Pouter Pigeon, Eagle, and Scotty Dog bookends; 123. "Blue" Everglade 10-1/2" vase made into lamp; 166. Crystal blue jay candle plug; 195. Crystal Geisha lamp on Ebony stand w/ shade; 209.-210. Apple Blossom after-dinner cups and saucers; 221. "Cambridge" oval sign; 249. Dianthus Pink 9-1/2" bowl w/ Crystal keyhole stem and handles; 271. Rubina 11-1/4" wide optic bowl; and 343. Crystal Caprice finger bowls.

As always, there are several pieces of Near Cut, an assortment of Georgian tumblers, swans in several sizes and colors, and a large group of Caprice. But, if you still haven't found that piece of glass you are looking for, how about that decorator's stool from the decorating department at the Cambridge Glass Company. As promised, there is something for everyone!

Make your plans now to attend this all-important benefit auction. Your support is needed now more than ever due to the devastating flood at the NCC Museum last summer. Please attend the auction or mail in your absentee bids (instructions are found on front of the auction catalog in your January *Crystal Ball*). COME EARLY, BID OFTEN, STAY LATE! We look forward to seeing you at the auction.



Carnival and Near Cut are shown here in a variety of colors and patterns.



The colorful opaques are found in many shapes and sizes.



Crystal Near Cut is also well represented above.



Here we see a Pink Hunt Scene Bridge Set, a Bluebell Turkey and a Pink Swan.

Convention Event

"Glass Dash" News

by Mike Arent

Each year as part of the standard convention activities, the NCC holds an all glass flea market which has recently become known as the "NCC Glass Dash." Plans for the 1999 Glass Dash are under way and for this year's attendees, the experience should be pleasantly familiar. The location will again be indoors at the Rolling Hills Family Center gymnasium on Route 209 South. This is the same location that has been used for the past several years. Early Bird admission will be \$10 and begin at 7:00 a.m. Regular admission will be \$2 and will cover from 8:00 a.m. until closing at 12:00 noon. And once again, the dealers will be required to wait until 7:00 a.m. before unpacking their wares. After all, this is what puts the dash in "Glass Dash."

Although we are striving to keep the experience the same for attendees, the increasing popularity of this event has dictated that we make some necessary changes for the dealers. Last year was the first year which we found it necessary to turn away dealers for lack of space. Briefly, the changes involve an increase in the cost of a dealer space, a limit on the number of tables per dealer, and the establishment of a "waiting list" for new dealers.

Dealer tables for the 1999 Glass Dash will be limited to a maximum of four tables per dealer with rates as follows:

1 table	-	\$40.00
2 tables	-	\$52.00
3 tables	-	\$64.00
4 tables	-	\$76.00

The initial waiting list will be created during the intermission of the 1999 NCC Auction from the list of dealers who have returned their applications. Dealers who participated in the 1998 Glass Dash will be put at the top of the list followed by dealers who participated in 1997 but not 1998. If necessary, a drawing will be held from the remaining applications to fill out the remainder of the list. If the list is not filled, the remaining spaces will be on a first-come-first-served basis.

At the time this appears in the *Crystal Ball*, dealers from previous years should already have their contract application. Anyone else wanting an application should contact Mike Arent at 740-439-4582 (e-mail: tuscan@clover.net) or Bud Walker at 609-965-2413 (e-mail: budw@bellatlantic.net). Complete rules for placing your name on the Glass Dash waiting list are detailed in the contract. Please follow the rules and do not assume that previous contacts have already placed your name on the list.

Make Plans Now



1999 Calendar Planning

Mark your calendars now with these important events during the coming year:

March 5

March Quarterly Meeting
Pritchard Laughlin Civic Center
Cambridge, Ohio

March 6

All Cambridge Glass Auction
Pritchard Laughlin Civic Center

June 24-27

1999 National Cambridge Collectors' Convention
Pritchard Laughlin Civic Center

June 25-27

NCC Glass Show and Sale
Pritchard Laughlin Civic Center

June 26

"Glass Dash" ("flea" market)
Beech Grove Family Development Center
Cambridge, Ohio

June 27

NCC Annual Meeting
Pritchard Laughlin Civic Center

August 28

August Quarterly Meeting and Work Session
To Be Announced
Cambridge, Ohio

November 6

November Quarterly Meeting and
Education Program
Cambridge Country Club (tentative)

NCC Convention 1999

It's A Small, Small World

by Mark A. Nye, Convention Chairman

Now is the time to make plans to attend the 1999 NCC, Inc. Convention. The dates are June 24-27 and once again most events will be held at the Pritchard Laughlin Civic Center in Cambridge, Ohio. The theme for the 1999 convention is "It's A Small, Small World" and we will feature the smaller items made by Cambridge, items such as shakers, perfumes, cordials, coasters, ashtrays, favor vases, etc.

While I do not have motel rates yet, it is strongly suggested reservations be made as soon as possible. The following motels are located in Cambridge at Interstate 70, Exit 178, Ohio Route 209. Don't forget the area code for Cambridge has changed to 740 when calling any of the following motels.

Best Western Cambridge	439-3581
Deer Creek Motel	432-6391
Travelodge of Cambridge	432-7375
Holiday Inn Cambridge	432-7313
Days Inn Cambridge	432-5691
Amerihost Cambridge	439-1505

Also available is Bogart's Bed & Breakfast in New Concord. Their telephone numbers are (740) 872-3514 or (740) 826-7439.

It is recommended that NCC members and friends attending the 1999 Convention make motel reservations as soon as possible since the most affordable rooms fill up quickly. Be sure to identify yourself as attending the NCC, Inc. Convention when making reservations.

Some of the activities scheduled for this year's convention are:

- Tours of Local Glass Factories
- Poolside Picnic
- Continental Breakfast Friday morning
- Glass Identification
- Bring & Brag
- Mini-Auction
- Glass Dash
- All Glass Show
- Friday Night Supper
- Annual Banquet
- Sunday Breakfast
- Annual Meeting
- Cambridge Glass Co. Employee Reunion

A schedule of events will appear in the March issue of the *Crystal Ball* and the registration form appears in the May issue with a registration due date of June 10.

Prior to the convention, Phyllis Smith will be holding another auction featuring glass from the Smith collection on Thursday, June 24. There are no plans for an auction preview on Wednesday night. There will probably be a "Dutch Treat" dinner at a local establishment Wednesday evening for those who are in town for the following day's auction.

Plan now to be in Cambridge June 24-27. Rain and survival gear not required.

Thank You, Thank You All ...

As of January 11, 1999, we have received orders for 265 pairs of the Scottie Dog Bookends. We have put in an order for 400 pairs to be made on the first run.
THANK YOU.

We are going to make extra pairs, so keep your orders coming to support a new NCC Museum. Please try to think of it as a donation for which you receive a pair of SPECIAL SCOTTIE DOG BOOKENDS.

Thank you again,
Bill Hagerty

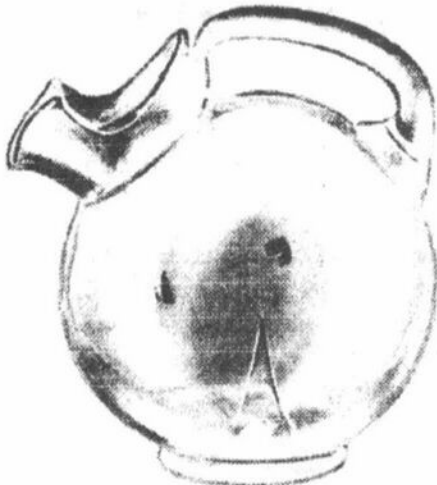
SCOTTIE DOG BOOKEND ORDER FORM - SEE PAGE 17



The Cambridge Glass Company



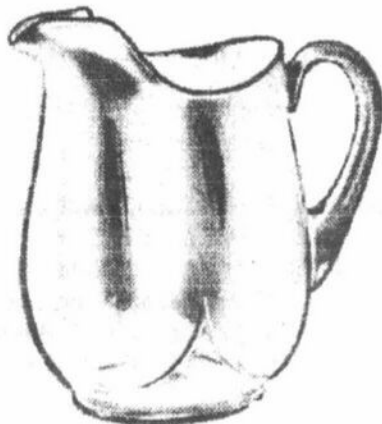
JUGS



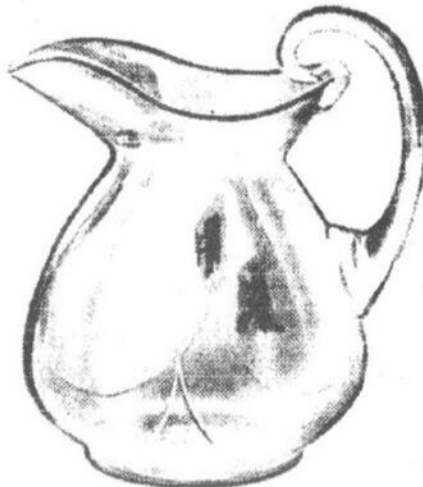
3400/38—80 oz., Ball, Ice Lipped
Also
3400/114—72 oz., Ball, Ice Lipped



3400/114—72 oz. Aero-Optic
Ice Lipped



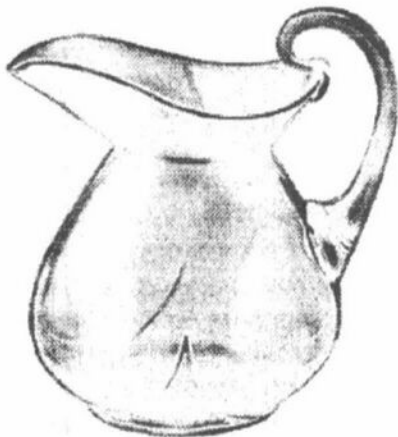
3400/100—76 oz. Ice Lipped



3400/141—80 oz.



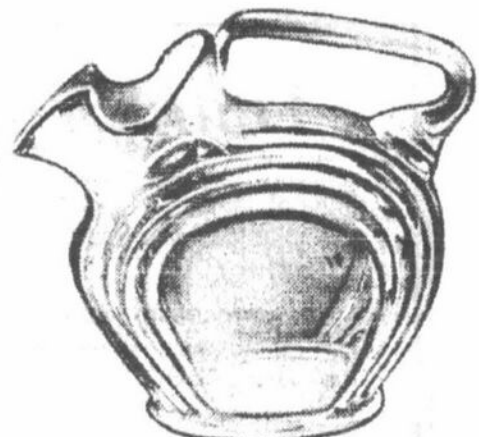
3400/152—76 oz. Doulton



3400/154—76 oz. Pinched



119—83 oz. Ice Lipped



3450—84 oz. Ice Lipped Nautilus

Cambridge Confusion

by Mark A. Nye

This month's column is the result of a couple of letters received and answered during the past year. The questions posed by the writers have probably arisen in the minds of others and the answers should receive a wider distribution.

One writer, a recent purchaser of the Rose Point book, asked about the two different pitchers (jugs) shown in the book, both with the designation 3400/141. This particular jug is shown on pages 57, 61, and 83 in the Rose Point book. Pages 57 and 61 are reprints of two pages from the January 1940 Cambridge catalog while page 83 is a reprint of a supplemental page to the 1949 catalog, issued in late 1949 or early 1950. Only pages 57, page 573 in the 1940 catalog, and 83, 50-D in the 1949-53 catalog, are reprinted here in their original form.

The 3400 line first appeared in 1930 and remained a mainstay of the Cambridge line until late in the 1940s, post World War II. It was an extensive line that included a number of jugs, one of which was designated 3400/141, 80 ounce. Exactly when this jug was introduced is not known. The first illustrations appear on catalog pages issued circa 1935-36 where it is listed as being available in Crystal, Amber, Dianthus Pink, Forest Green, Royal Blue, Amethyst, and Carmen. The identical jug with the caption 3400/141 80 ounce also appears on a catalog page issued in the late 1930s and again in the 1940 catalog.

The war years took a toll on Cambridge as well as other domestic glassmakers. Many lines were dropped or temporarily discontinued until raw materials and labor once again became available. Little specific information regarding what was being made during the middle 1940s and the first postwar years has survived. As the country returned to a peacetime mode, imports from a recovering Europe began to make inroads into the U.S. market. In addition, lifestyles were changing. To meet all these changes, Cambridge developed new lines, dropped old ones and revised some existing ones, all in the interest of meeting the changing market demands and to reduce costs. (The making of fine glass is very labor intensive.)

Making pieces easier to make was no doubt a goal of Cambridge management. Less labor meant less cost and a simpler to make piece usually resulted in less scrap and a reduction in losses. One of the pieces involved in this process was the 3400/141 jug. The handle was changed and the top finish was revised to a simpler shape. However, the catalog number was not changed and the restyled jug remained the 3400/141 80 ounce. Not a problem then but confusing today.

One possible solution for today's collectors would be to designate the original version as 3400/141 (early) and the revised as 3400/141 (late) or as original and revised.

Other examples of two different pieces have the same name or item number abound and a future article will discuss more of these.

The second question involved Doulton jugs and I will begin by saying that early on I adopted the policy I would only use descriptions, line names, piece names, etc., used by Cambridge and that I could document by means of actual Cambridge documents, catalogs, price lists, advertisements, etc. This policy has been used in all my articles and the several books I have either written or edited.

In just two instances in the reprinted Cambridge catalogs do you find a jug captioned "Doulton." One such designation occurs in the Caprice line where the 178 jug is captioned in the 1940 catalog as "178 90 ounce Doulton" and the second is in the jug section of the same catalog (page 412, reprinted here) where the 3400/152 76 ounce jug is also described as "Doulton." In that portion of the 1940 catalog devoted to showing the 3400 line, even though the 3400/152 jug is shown, the descriptive term "Doulton" is not used. Nor does it appear in the etchings section where it once again appears.

Prior to 1940, Cambridge catalog pages issued circa 1935-36 and again around 1938-39 also include "Doulton" in the caption beneath illustrations of the 3400/152 76 ounce jug. None of the other 3400 line jugs including the 3400/141, even though similar in appearance to the 3400/152, were captioned as "Doulton."

The 3400/152 jug and the 3400/141 jug were made using the same mold. The lip and top shape of each was hand formed, as was the handle, and then applied while hot to the jug. This hand finishing process reduced the stated capacity of the 3400/152 jug to 76 ounces versus the listed 80 ounce capacity of the 3400/141 jug. Since both jugs underwent extensive hand finishing, the differences between the two may have, at times, become a little blurred.

What is a Cambridge 3400 line Doulton jug? Based on existing Cambridge documentation, catalogs and price lists, the only 3400 line jug that should be designated Doulton is the 3400/152. Others, such as the 3400/141 and perhaps the 3400/154 (a pinched version of

(Continued on page 12)



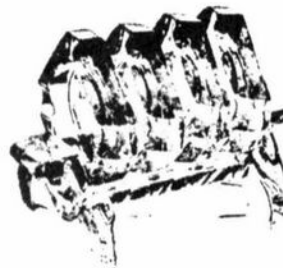
Rose Point



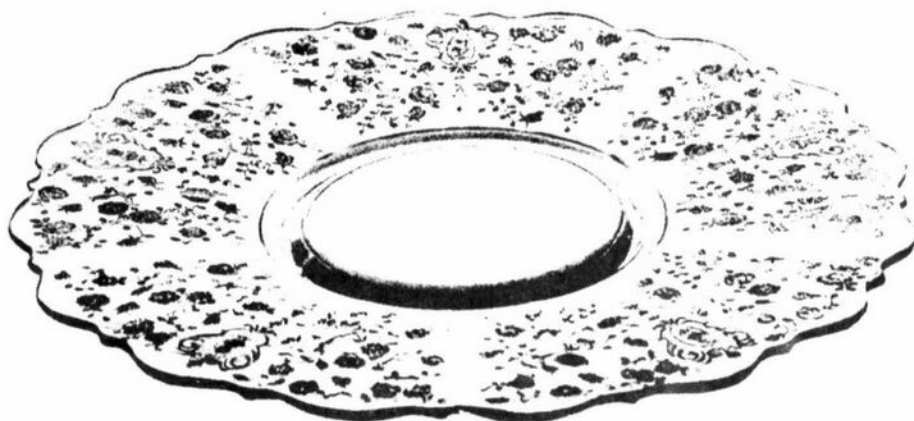
P. 721
2½ in. Ash Tray



P. 747
Cigarette Box & Cover



P. 728
5 pc. Ash Tray Set



3900/167
14 in. Plate



103
2 pc. Nite Set



3400/141
80 oz. Jug (not Optic)



1066
5½ in. Blown Candy Box & Cover



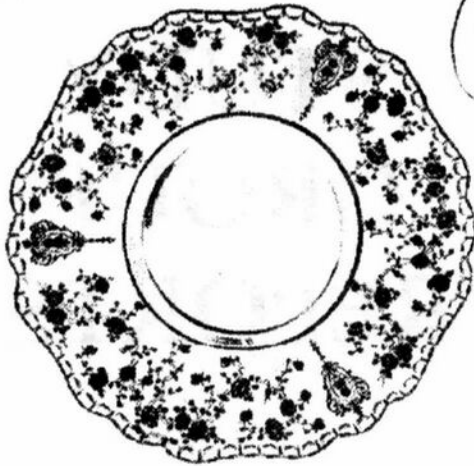
1066
5½ in. Blown Comport



The Cambridge Glass Company



Rose Point



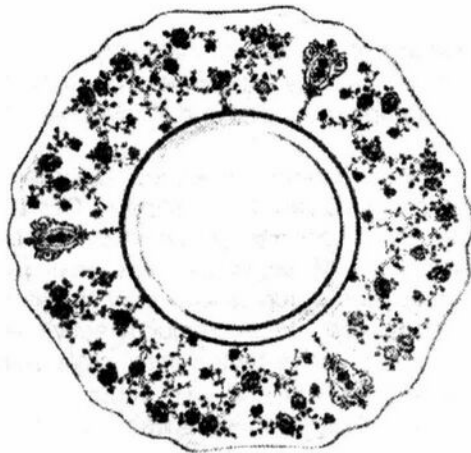
3500/3



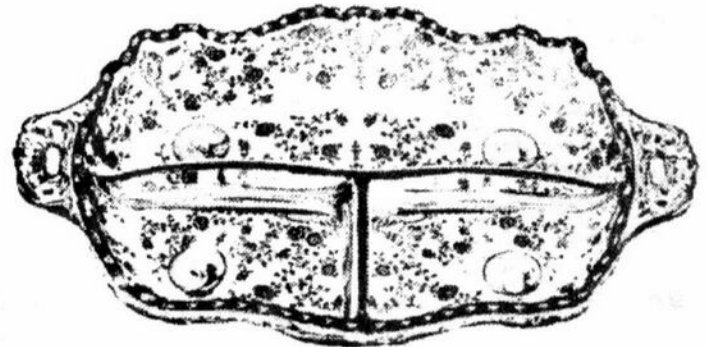
3121



3500



3400/62



3500 64



3400/141



3400/4

JANUARY 1, 1940



**LETTERS
FROM
MEMBERS AND
FRIENDS**

Re: Luene B. Brandt article in November '98 issue

Dear Lorraine,

Just a quick note to say how much I enjoyed the article by Luene Brandt. I have only one problem with her wonderful suggestion: "buy the house next door." Our neighbors also collect Cambridge glass ... does that mean that they are eye-balling our house? Perhaps we could build a connecting corridor and line it with shelves and share!

I hope more Cambridge collectors will write in with their stories about collecting and also share their storage solutions!

Best regards,

Georgia

Thanks for writing, Georgia. Many of us enjoy hearing these stories and ideas. It's also so refreshing to see new viewpoints. Everyone has something to add! Please share with us. Any articles, thoughts, or ideas can be sent to:
The Crystal Ball
c/o NCC, Inc.
P.O. Box 416
Cambridge, OH 43725-0416

(or email: NCC_Crystal_Ball@compuserve.com)

Lorraine

(CAMBRIDGE CONFUSION - Continued from page 9)
3400/141) could be referred to informally as Doulton style. Careful examination of the 1940 catalog page reprinted with this article will reveal the differences between the true Doulton jug, the 3400/152, and the other jugs in the 3400 line.

NATIONAL STUDY GROUP REPORTS

Study Group #13 The Miami Valley (Ohio) Study Club

The meeting of the Miami Valley (Ohio) Study Club was held on Tuesday, November 10, 1998. President George Stamper presided and 17 members attended.

During the business meeting, George Stamper reported on the Quarterly Meeting in Cambridge and all of the plans and projects that NCC is involved in to re-establish the Museum that was destroyed in the flood. Our study club is currently developing web pages to be placed on a community activities oriented website called activedayton.com. We hope it will attract new members and give people links to other Cambridge and glass oriented websites. Member Jim Barbian talked about an article by Harry Rinker in *AntiqueWeek* urging the development of standards for the condition of glass. Jim feels strongly about the importance of this project and believes that glass clubs should get behind this project.

An informative program on opaques was presented by Georgia Otten, with many pieces brought by club members to serve as illustrations.

Show and Tell: Azurite #206 perfume and dropper; Mandarin Gold #1191 Cherub candleholders; Ebony #3900/575 10" Cornucopia vase; Decalware special article candy box with cover; Jade special article bud vase candleholder with gold encrusted D/619 border; 8" salad plate with applied Sterling Silver edge, etched Elaine; #3500/112 15" 3-compartment celery and relish, cut Adonis; Frosted Peachblo #509 Two Kid.

— submitted by Judy Rhoads, Secretary

~~~~~  
(Continued on page 14)

# Where Is My Membership Card? ... And Other Related Issues

by Jeff Ross

I thought very seriously about titling this article "Come Hell or High Water" because, as we all know, since June we have had both. Personally, the flooding of the NCC Museum and two computer failures have created major havoc for me in trying to keep up with the database and mailing list for the *Crystal Ball*. This article's sole purpose is to make sure that you as an NCC member are receiving the service that you deserve from the Membership Committee. So let me tell you what we would like to accomplish in the next few months.

First, with the Museum office destruction and the move of the membership records to my house, you might find that you are missing an issue of the *Crystal Ball* from June or after. If you are, I need to know. Please drop a note to my attention in care of the NCC post office box, and I will attempt to get you what you are missing. Most TV offers say to allow four to six weeks for delivery, but I will try to do better.

The second thing that we need to talk about are the membership cards. As you remember, back in January 1998, we ceased issuing the annual renewal cards in place of a permanent card that remains in effect as long as dues are kept current. I had planned to roll these new cards out in June at the NCC Convention, but didn't make it. They will be ready soon. However, I hesitate to give you a definite date. Your continued patience is appreciated.

Also, it is a good idea to verify your renewal date after you have paid your dues. You can do this by checking the mailing label on your *Crystal Ball*. Be sure that the renewal year has been advanced for the number of years paid. With the multi-year plans, it is easy to make a mistake, especially with my typing skills.

In closing, I hope that we are maintaining satisfactory service to you in this difficult time. Certainly you all realize that your continued support has never been more appreciated. If you have any additional comments or questions, please drop me a line in care of the NCC post office box. Thank you.

*Special Offer to*

## NATIONAL CAMBRIDGE COLLECTORS MEMBERS

*The March 24th issue of Antique Trader will focus on Glass.  
Identify yourself as a member of the National Cambridge Collectors  
and receive 20% off any ad placed in this issue.*



**DEADLINE MARCH 12TH, 1999**

*Take advantage of:*

- ◆ 50,000 paid subscribers
- ◆ A large weekly readership of over 150,000 active buyers and sellers
- ◆ National distribution
- ◆ Extra distribution at glass shows and conventions
- ◆ Lowest cost per contact in the industry

*Call now to schedule your ad in this issue or any other!*

### ANTIQUETRADER

*America's Largest Antiques & Collectibles Marketplace*

Display advertising 1-800-482-0147 ◆ Classified advertising 1-800-531-0880 ◆ P.O. Box 1050 ◆ Dubuque, IA 52004

Receive  
a free issue of  
Antique Trader!  
CALL: 1-800  
334-7165

Source: ONC901

## IN MEMORIAM

We wish to express our sympathy to Marybelle and Ward Teters, their family, and friends in the loss of Marybelle's father, William B. Enos, on January 8, 1999.

Mr. Enos leaves his wife, Sarah L. Enos; a daughter Mrs. Ward (Marybelle) Teters; two sons, John C. Enos and William B. Enos, Jr.; four grandchildren; and five great-grandchildren.

May it comfort you to know that others do care and share in your loss.

(STUDY GROUPS - Continued from page 12)

### Study Group #16 Elegant Glass Collectors

The Elegant Glass Collectors study group met November 19-22, 1998, at the Eastern National Antiques Show and Sale in Harrisburg, PA, and at the home of John Corl. Members attending were: John Corl, Loretta and Charlie Weeks, Anna and Bud Walker, Laura and Windsor Tracy, Leslie and Bill Connor, and Pam Earussi. Guests of the study group were: Willard Kolb, Charles Upton, Kathy and Dean Stolberg, and Leslie and Richard Taylor.

We displayed two full cases of etched glassware to illustrate the new Etchings book. We spoke about Cambridge to many club members and other people interested in Cambridge Glass. We enlisted several new members and sold books. We also received donations for the new Museum and some deposits for the fundraiser bookends. A few people brought glass to be identified and happily we were able to identify some of it and refer to our fellow NCC club members who were dealers at the show (Leasures, Elford's, and Lynn Welker). Falira, of Falira's Antiques was also displaying and selling. We have been asked to do the Blues of Cambridge, which would look very nice with Nearcut. We were told that some of the Pattern Glass Collectors are buying Cambridge. A good time was had by all admiring the beautiful Cambridge Glass which indeed looked most elegant displayed in the cases.

— submitted by Pam Earussi

THEME: COLORS OF THE TWENTIES  
Sparkling Clearwater Depression Glass Club Inc.  
**20th Annual Show & Sale**  
**GLASS • CHINA • POTTERY**

FEBRUARY 13 AND 14, 1999

**BEST SHOW ON FLORIDA'S WEST  
COAST AT HARBOR VIEW CENTER**  
300 Cleveland St. (Rt. 60) Clearwater, FL

### Admission

Sat. 10 AM - 5 PM  
Sun. 10 AM - 4 PM  
Reg. Admission \$3.50  
Discount .50 with ad  
card or flyer TAX INCLUDED  
**Early Bird Sat. 9 AM-10 AM**  
Early Bird Admission \$5  
Admission good for both days

Books are  
donated to  
Pinellas County  
Libraries

**FREE PARKING**  
**FREE I.D.**  
**DOOR PRIZES**  
**SPECIAL DISPLAY**

### Special Guest

Teri Steele, Editor Daze



**INFORMATION (727) 442-4431**

### **WE CLEAN CLOUDY GLASS!** **SATISFACTION GUARANTEED**

*Yes, it is true that we really can restore the interior of your cruet, vase, decanter and other internally etched items back to near original condition.*

*We do not oil, wax or cover up the sickness in any way! We actually remove it.*

*No items are too sick to clean! If we cannot clean an item to meet your satisfaction, the cleaning is FREE!*

*Send no money up front. When we return your item a bill will be enclosed for the postage and cleaning. If you are not satisfied, only the return postage is requested.*

*Most items clean in 7-8 weeks. All glass is handled and cleaned at your risk. Some very cloudy items may take several additional weeks.*

|                 |              |                  |              |
|-----------------|--------------|------------------|--------------|
| Cocktail Shaker | \$35.00      | Salt Shaker(1)   | \$25.00      |
| Cologne         | \$27.50      | Salt Shaker(2)   | \$42.50      |
| Cruet           | \$27.50      | Vases(under 10") | \$30-\$35.00 |
| Decanter        | \$35-\$45.00 | Vinegar & Oil    | \$30.00      |
| Lavendar Jar    | \$25-\$35.00 | Water Bottle     | \$30-\$40.00 |

Ship to: Kim Carlisle & Associates  
28220 Lamong Road, Dept. C  
Sheridan, IN 46069  
(317) 758-5767

kcarlisl@indy.net

1999



# Have A Heart

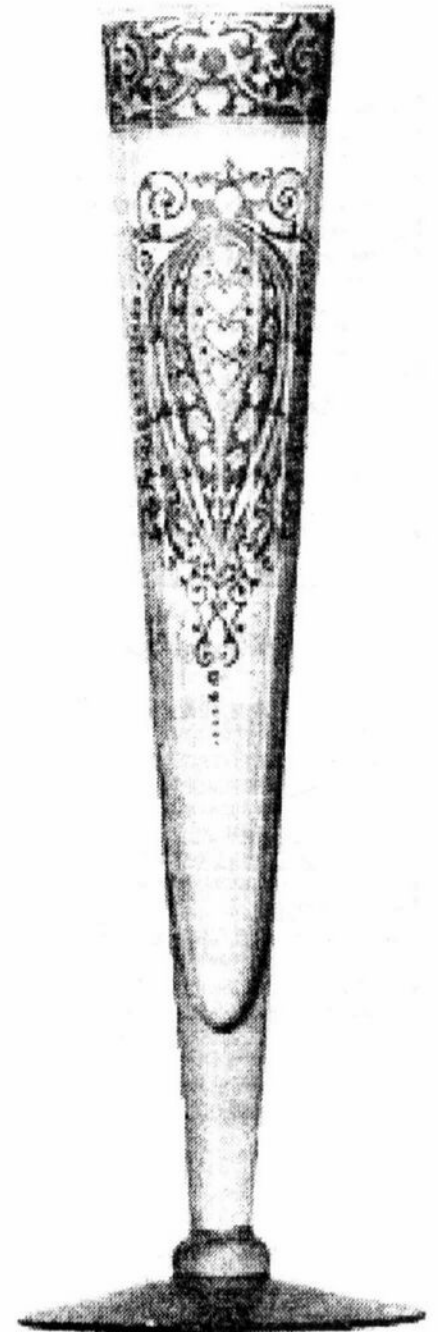
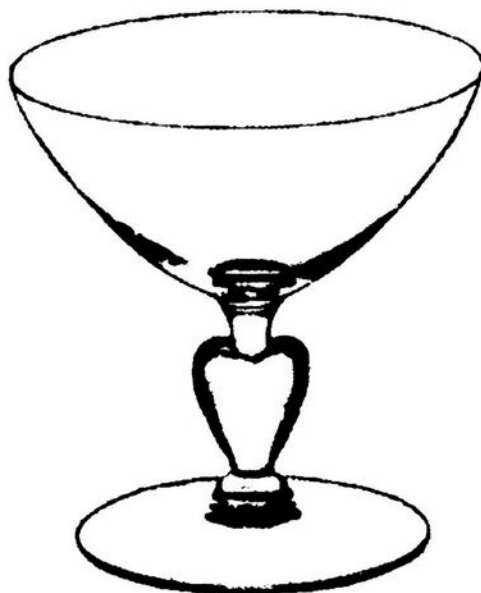
by Georgia G. Otten

In the world of collecting there are many double collectibles, some of which would apply to Cambridge glass. For the "Carnival Glass" collectors, elusive examples of Cambridge Carnival are sought. There are the "black glass" collectors for whom Cambridge glass could supply any number of wonderful examples. And there are enthusiastic collectors of golf related items who would be thrilled with a piece of Cambridge etched with the Golf Scene. So I thought, with Valentine's Day approaching, what about HEARTS? Sure, everyone has one, but what could we find in Cambridge for those collectors who love hearts?

My first choice for heart-hunting was the *Etchings by Cambridge* book. Being an optimist, I readied some paper to list all the etchings I could find with hearts. Ooops...not so many. Found one, E743! Looking into other sources I thought I would surely find a Rock Crystal engraving which included a heart...didn't see any! Okay, back to the etchings book, I decided to expand a bit and look for a "stylized" heart within an etch. With a little imagination, or maybe a lot, true lovers of hearts could see their passion in the Apple Blossom Etch #744, the Blackberry Etch #756, the Bordero Etch #744, and numbered Etch 741. (By now, all readers should have the etchings book in hand!) And where else did the Cambridge Glass Company offer a heart? For the "stem collector" of the world, your heart can be found in Line #3795, Sweetheart!

It is so much fun to consider the infinite possibilities to this collecting passion, so have a wonderful Valentine's Day and for your Cambridge collection, why not "Have a Heart."

## Sweetheart



274-10"  
Etched "743"

## CAMBRIDGE GLASS BOOKS FOR SALE

By National Cambridge Collectors, Inc.

### Colors in Cambridge Glass

128 pages, 60 color plates, full index. Hardbound w/valueguide..... 19 95

### 1910 Nearcut

108-page reprint of original 1910 catalog. PB w/valueguide..... 14 95

### 1930-1934 Cambridge Glass Co. Catalog Reprint

250-page reprint of original catalog. PB w/value guide..... 14 95

### 1949-1953 Cambridge Glass Co. Catalog Reprint

300-page B&W reprint of original catalog. B&W paperback with value guide..... 14 95

### 1940's Cambridge Glass Co. Catalog Reprint

250-page reprint of original catalog and all well known supplemental pages. Drilled, ready for placement in your own three-ring binder. Due to its size, the reprint does not include a value guide. B&W. 34.95

### Cambridge Rose Point by Mark Nye

94-page book listing of Rose Point from several sources: catalogs, trade journals, price lists, etching plates, and other surviving company records. One of the most popular lines of The Cambridge Glass Company, showing the many blanks on which Rose Point might be found along with the history and production life of the line. B&W paperback with value guide..... 14 95

### Etchings by Cambridge, Vol. 1 By the Miami Valley Study Group

84-page book showing samples of plate etchings applied by The Cambridge Glass Company. B&W paperback. Due to the style of publication this book does not have a value guide..... 14 95

### The Home of "Near-Cut" Factory Post Card

B&W picture of The Cambridge Glass Company post card..... 50

### Crystal Lady Video

Approximate 25 minute video copy of old Cambridge Glass Co. film showing the making of a goblet in the Cambridge factory..... 15 00

### Rose Point Value Guide (Included with Rose Point Book purchase)

Value guide only, includes postage..... 5 00

N. C. C. Members can purchase the above publications at a 10% discount

## Other books on Cambridge Glass

### Cambridge Glass 1927-1929 by Bill and Phyllis Smith

66-page reprint of original catalog. B&W paperback with updated value guide..... 7 95

### Cambridge Stemware by Mark A. Nye

167 page book showing as many known Cambridge stems known at the time of publication. B&W paperback. No value guide..... 19 95

### Cambridge Glass Company by Mary, Lyle and Lynn Welker

120 pages of reprints from eight old catalogs. B&W paperback. No value guide..... 10 00

### Cambridge, Ohio Glass in Color II by Mary, Lyle and Lynn Welker

15 Color plates showing choice pieces from their collection. Spiralbound. No value guide..... 5 95

### Cambridge Glass Company 1903 by Harold & Judy Bennett

106-page reprint of original catalog. B&W paperback N/value guide 5 00

### Reflections by the Degenhart Paperweight & Glass Museum

45-page book giving a history of all 18 glass companies in Guernsey County. B&W paperback with pictures..... 5 00 including postage

address orders to:

Books, National Cambridge Collectors, Inc.  
P. O. Box 416  
Cambridge, OH 43725-0416

Please add postage and handling to your order (first book, \$3.00; each additional book \$1.00). Ohio residents add 6 1/2% state sales tax.

Only check or money order. NO CASH, NO CHARGE CARDS  
Dealer Discounts Available. Please Write!

## OTHER ITEMS FOR SALE FROM THE NATIONAL CAMBRIDGE COLLECTORS GLASS MUSEUM

### Brochures:

|                       |      |
|-----------------------|------|
| Cambridge Arms.....   | 1 00 |
| Cambridge Square..... | 25   |
| Chantilly.....        | 25   |
| Laurel Wreath.....    | 10   |
| Lynbrook.....         | 10   |
| Martha.....           | 25   |
| Regency.....          | 25   |
| Rondo.....            | 10   |
| Roxbury.....          | 10   |
| Star.....             | 10   |

Please include SASE for above brochures

Cup Plates showing Cambridge Pencil dog motif in bottom. Made by Pairpoint in Crystal..... ea..... 2.00

Please include \$3.00 shipping & handling on each order

The following Convention Favors are marked with the N.C.C. name & yr.

### Convention favors

|                                                                       |       |
|-----------------------------------------------------------------------|-------|
| 1984 Pink, 2 1/2 oz. Georgian Tumbler.....                            | 2 00  |
| 1985 Amber, 2 1/2 oz. Georgian Tumbler.....                           | 2 00  |
| 1986 Yellow, 2 1/2 oz. Georgian Tumbler.....                          | 2 00  |
| 1988 Cobalt, Cambridge Square Cigarette Holder.....                   | 2 00  |
| 1989 Teal Green, Mt. Vernon Cordial.....                              | 2 00  |
| 1990 Pink, Mt. Vernon Cordial.....                                    | 2 00  |
| 1991 Cobalt Blue, Mt. Vernon Cordial.....                             | 2 00  |
| 1994 Crystal Iridized, Cascade Goblet.....                            | 5 00  |
| 1995 Cranberry Ice, Cascade Goblet.....                               | 5 00  |
| 1996 Carnival, Cascade Goblet.....                                    | 5 00  |
| 1997 Green, Opal Edge, Cascade Goblet.....                            | 5 00  |
| 1998 Yellow Iridized, Cascade Goblet.....                             | 5 00  |
| Eagle book end, Fund raiser, Cobalt blue. (only one single left)..... | 30 00 |
| Prism with "Cambridge" on one side. Fund raiser, Mint Julap.....      | 15 00 |

Please include \$3.00 shipping & handling on each order of 5 items

### Books by Gene Florence Hardbound color with value guides

Elegant Glassware of the Depression Era (Eighth Edition)..... 19 95  
Shipping is \$3.00 for first book and \$1.00 for each additional book

Salt & Pepper tops, Polycarbon plastic, will fit most regular sized Cambridge shakers such as Rose Point fld and flat bottomed shakers. Also fit Heisey Rose, Saturn, Plantation, Crystalite and some Orchid. Fit some Anchor Hocking and Candlewick made from the same material used to make taillight lenses for autos.

Price: 1 to 9 pairs @ \$6 per pair - 10 or more pairs @ \$5 per pair  
Shipping & Handling is \$3.00 per order on S&P tops

Send all orders to:

National Cambridge Collectors, Inc.  
P. O. Box 416  
Cambridge, Ohio 43725-0416





### WON'T YOU HELP?

The Ohio flood of 1998 destroyed the National Cambridge Collectors' Museum. Due to our great loss we are offering the public an opportunity to help us by purchasing a special edition of Scottie Dog bookends. These Scotties will be made from the original Cambridge Glass mold in a "Moonlight" blue color, and will be clearly marked with the N.C.C. name, date and Mosser logo. The cost will be \$100 per set. A \$25 dollar deposit will be required for each set ordered. Total cost including shipping, will be \$110 for each set ordered. All moneys raised will go toward a new Cambridge Glass Museum.

**Thank you!**

*(Order blank)*

Name: (please print) \_\_\_\_\_

Address: \_\_\_\_\_

City: \_\_\_\_\_ State: \_\_\_\_\_ Zip Code \_\_\_\_\_ - \_\_\_\_\_

No. of pairs: \_\_\_\_\_ X \$25.00 = \$ \_\_\_\_\_ Deposit - Check # \_\_\_\_\_

Will pick up at the Convention in June 1999 # of sets: \_\_\_\_\_ Ship # sets: \_\_\_\_\_

Make checks payable to **N.C.C., Inc.**

**Mail to: National Cambridge Collectors, Inc.  
P. O. Box 416  
Cambridge, OH 43725-0416**

Shipping charge is \$10 per set, unless picked up at the N.C.C. Convention in June 1999. If you pick up at the 1999 Convention, or are an Ohio resident, you will be subject to 6 1/2% sales tax (\$6.50 per set). Shipping charges will be paid with balance of order before being shipped. You will be notified of your balance due, including shipping charges and tax, (if applicable), when your order is ready to be shipped. Your canceled check will be your receipt. We will not mail out deposit confirmations.

Since this is a special edition, we must sell a minimum of 200 pair in order to proceed. If unable to reach this goal, all deposits will be refunded. We anticipate producing between 200 to 400 pair. Don't be left out - order today before this offer expires.

# ~ GLASS ~ MARKETPLACE

## Classifieds

**WANTED:** Rare or unusual pieces of Cambridge Glass especially Opaques or Carnival. Also Cambridge Art Pottery. Top prices for outstanding pieces. **Call collect 609-965-2413.**

**WANTED:** "Any piece of Cambridge Etch 520, in pink." Please e-mail at [dhmjh@ibm.net](mailto:dhmjh@ibm.net) or phone (714) 538-6656. Thanks. Mary Jane.

**WANTED:** Rare or unusual pieces of Cambridge Glass, Rose Point, 3106 Rose Point stems, Marjorie etched items, decorated opaques, Cambridge Art Pottery, nude stems, swans, and novelty items. **Contact Jim & Nancy Finley, 711 W Broadway, Sedalia, MO 65301, (660) 826-5032 or e-mail: nFinley@iland.net.**

**FOR SALE:** Swans (Porcelain collector bought small estate which also contained the following): Ebony 6 1/2" Type I, 4 1/2" Type I, 3" Type I, 3" Type II - Emerald 4 1/2" Type I - Gold Krystol 3" Type II. All mint, all marked. Sell all six for \$415. **Mark Stuart (573) 886-8774 or 731-A Demaret, Columbia, MO 65202.**

**ADVERTISE HERE NOW!**  
You never know who you are missing.

### Bogart's Bed & Breakfast

62 W Main Street, New Concord  
New Concord lodging in 1830 Federal  
Style home, decorated with  
antiques throughout.

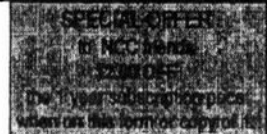


### Bogart's Antiques

7527 E. Pike, Norwich OH  
Quality Antiques Bought & Sold

OWNERS: Jack & Sharon Bogart  
872-3514 or 826-7439

## The DAZE Inc.



The Original National monthly newspaper dedicated to the buying, selling and collecting of American made glassware china, and pottery from this century. We educate and inform you each month with feature articles by top notch writers, readers letters, club happenings, reproduction news, show reports and there are hundreds of dealers to help you fill in the missing pieces of your collection. "Keep up with what's happening" . . . Subscribe today!

Name \_\_\_\_\_  
Street \_\_\_\_\_  
City \_\_\_\_\_  
State \_\_\_\_\_ Zip \_\_\_\_\_  
|| 1 year \$21.00 || 2 years \$40.00 || \$2.00 Single Copy  
Subscription Hot Line: 1-800-336-9927  
Exp. Date \_\_\_\_\_ Card No. \_\_\_\_\_  
Signature \_\_\_\_\_

**Orders to:**  
**The Daze, Inc., Box 57, Otisville, MI 48463**  
Please allow 30 days for your first issue - Canadian Subscribers, add \$1.00 per year and subscribe by charge card only! This Special Offer may not be combined with any other special offer.  
Offer Expires December 31, 1998



## Stems Without Thorns

As the world's largest supplier of discontinued and active china, crystal, flatware and collectibles, Replacements, Ltd. has over 325 different patterns of Cambridge crystal.

And however much we enjoy selling pieces which were once thought irreplaceable, we love buying them as well. Thanks to people like you, our crystal inventory currently numbers in the hundreds of thousands, and the numbers keep growing every year.

So, if you've been unsuccessfully searching for that elusive piece of Cambridge - or any other type of fine crystal - call us for a free list of pieces available in your pattern. And, if you're looking to sell pieces you currently have, we can help you there, too.

## REPLACEMENTS, LTD.

China, Crystal & Flatware • Discontinued & Active

1-800-REPLACE  
(1-800-737-5223)

1089 Knox Road  
PO Box 26029 Dept. CB  
Greensboro, NC 27420

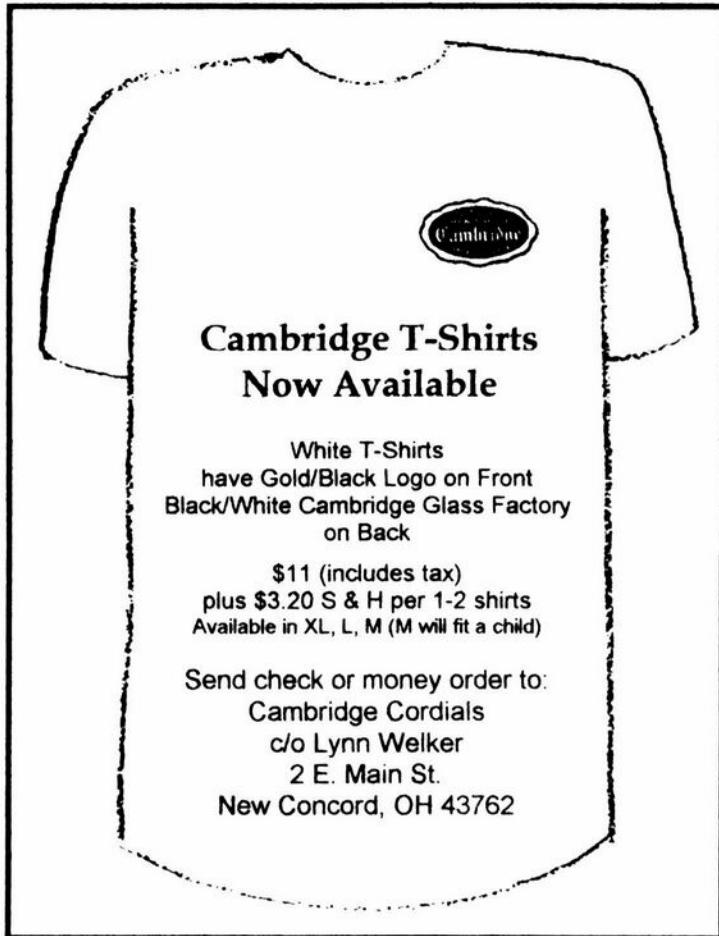
## DEALERS



## DIRECTORY

NOTE: When writing to the dealers listed here, please enclose a SASE!

|                                                                                                                                                                                                                                                                                    |                                                                                                                                                                                                                  |                                                                                                                                                                                                                                           |
|------------------------------------------------------------------------------------------------------------------------------------------------------------------------------------------------------------------------------------------------------------------------------------|------------------------------------------------------------------------------------------------------------------------------------------------------------------------------------------------------------------|-------------------------------------------------------------------------------------------------------------------------------------------------------------------------------------------------------------------------------------------|
| <p><b>DAUGHERTY'S ANTIQUES</b><br/>Jerry and Shirley</p> <p>Antiques and Collectibles * Mostly Glass</p> <p>Shows &amp; Mail Orders 2515 Cheshire No<br/>402-423-7426 Evenings Lincoln NE 68512</p>                                                                                | <p><b>"HAPPINESS IS"</b><br/>Buddy and Kathy Stultz</p> <p>3106 Warren Court, Glen Allen, VA 23060<br/>804-672-8102</p> <p>Specializing in American Made Glass<br/>We Buy &amp; Sell, Shows &amp; Mail Order</p> | <p><b>THE JONES GROUP</b><br/>Cindy Jones</p> <p>Buy and Sell Cambridge Glass<br/>650 Riverside Drive<br/>Sleepy Hollow, NY 10591<br/>914-631-1656 or E-Mail Caprice0@aol.com</p>                                                         |
| <p><b>Milbra's Crystal</b> Buy &amp; Sell<br/>Replacement and Matching Specializing in<br/>Cambridge<br/>Fostoria<br/>Heisey<br/>and others</p> <p>Milbra Long (817) 645-6066<br/>Emily Seate (817) 294-9837<br/>PO Box 784, Cleburne, TX 76033<br/>E-mail: longseat@flash.net</p> | <p><b>YOU CAN ADVERTISE YOUR<br/>ANTIQUÉ SHOP HERE!</b></p>                                                                                                                                                      | <p><b>MARY JANE'S ANTIQUES</b><br/>Mary Jane Humes</p> <p>2653 Burgener Dr., Decatur, IL 62521<br/>Depression Era Items<br/>Cambridge and Other Elegant Glass<br/>mjhumes@aol.com 217 422-5453</p>                                        |
| <p><b>THE GLASS URN</b><br/>456 West Main Street, Suite G<br/>Mesa, AZ 85201 602-833-2702</p> <p>Mail Order Shows Open Shop</p> <p>CAMBRIDGE, FOSTORIA, HEISEY, ETC.</p>                                                                                                           | <p><b>ANTIQUES ON THE MALL</b><br/>SPECIALIZING IN CAMBRIDGE GLASS</p> <p>Bogart's - Bldg. #3 - Norwich, OH</p> <p>Virginia Bennett 740-432-4483<br/>64183 Warne Drive, Cambridge, OH 43725</p>                  | <p><b>GATEWAY ANTIQUE MALL, INC.</b><br/>JUST NW OF MINNEAPOLIS-ST. PAUL, MN<br/>Next to Super 8 in Rogers, MN<br/>(I-94/101 Intersection)</p> <p>85 Dealers 7 Days, 10-6 612-428-8286<br/>ELAINE STORCK, OWNER/DIRECTOR</p>              |
| <p><b>THE DEGENHART PAPERWEIGHT<br/>AND GLASS MUSEUM, INC.</b></p> <p>P. O. Box 186<br/>Cambridge, Ohio 43725-0186<br/>Intersection of US 22 &amp; I 77<br/>Phone 740-432-2626</p>                                                                                                 | <p><b>D &amp; D ANTIQUES</b></p> <p>Columbus, Ohio</p> <p>Dick Slifko SHOWS ONLY</p>                                                                                                                             | <p><b>JAMESTOWN ANTIQUES</b><br/>16 E. Washington St., Jamestown, OH 45335</p> <p>Rosepoint and Cambridge our Specialty<br/>Shows and Shop (chance or appt.)</p> <p>Buy (937) 675-6491 Sell<br/>Susan and Larry Everett</p>               |
| <p><b>THE GLASS CUPBOARD</b></p> <p>P. O. Box 652<br/>West End, North Carolina 27376</p> <p>Marcia Ellis Cambridge, Heisey<br/>910-673-2884 Shows, Mail Order</p>                                                                                                                  | <p><b>JUDY'S ANTIQUES</b><br/>Judy Bennett</p> <p>422 S. Ninth Street (Corner of Jefferson)<br/>Cambridge, Ohio 43725<br/>Bus. 740-432-5855<br/>Res. 740-432-3045</p> <p>CAMBRIDGE GLASS MY SPECIALTY</p>        | <p><b>Horse'n Around Antiques</b><br/>Kelvin and Heather Moore</p> <p>Exit 69 on Interstate 64<br/>Woodlawn, IL 62898<br/>e-mail: hmoore@midwest.net<br/>TEL. 618-735-9114</p> <p>Specializing in Cambridge and other Elegant Glass</p>   |
| <p><b>FINDER'S ANTIQUE HOUSE</b><br/>3769 Highway 29 North<br/>Danville, VA 24540<br/>(804) 836-6782<br/>Cambridge-Heisey-Duncan-Fostoria</p>                                                                                                                                      | <p><b>GREEN ACRES FARM</b><br/>2678 Hazelton Etna Rd., Pataskala, OH 43062<br/>(State Route 310 North)</p> <p>Sat &amp; Sun 1-7 PM 740-927-1882<br/>Antiques, Crystal Glass and Collectibles</p>                 | <p><b>CRYSTAL LADY</b><br/>1817 Vinton St., Omaha, NE 68108</p> <p>Bill, Joann, and Marcie Hagerty</p> <p>Bus. 402-341-0643 Res. 402-391-6730<br/>Specializing in Elegant Glass &amp; Collectibles</p>                                    |
| <p><b>YOU CAN ADVERTISE YOUR<br/>ANTIQUÉ SHOP HERE!</b></p>                                                                                                                                                                                                                        | <p><b>YOU CAN ADVERTISE YOUR<br/>ANTIQUÉ SHOP HERE!</b></p>                                                                                                                                                      | <p><b>PENNY COURT MALL</b><br/>637 Wheeling Avenue<br/>Cambridge, Ohio</p> <p>100 Booths 15,000 sq. ft.<br/>HOURS: Daily 10-6 Sunday Noon-5<br/>Closed: Easter, Thanksgiving, Christmas<br/>Call for Other Holiday Hours 740-432-4369</p> |
| <p><b>MICHAEL KRUMME</b><br/>Cambridge and other elegant glassware</p> <p>(213) 874-GLASS e-mail: mikrumme@pacbell.net<br/>website: http://www.glassshow.com</p> <p>PO Box 48225<br/>Los Angeles CA 90048-0225 Send your want list</p>                                             | <p><b>Warren and Mary Welsh</b><br/>Cambridge &amp; Other Elegant Glassware</p> <p>3635 Saddle Rock Rd., Colorado Springs, CO 80918<br/>(719) 531-5866<br/>WELS@EARTHLINK.NET</p> <p>MAIL ORDER SHOWS</p>        | <p><b>MARGARET LANE ANTIQUES</b><br/>2 E. Main St., New Concord, OH 43762<br/>Lynn Welker 740-826-7414</p> <p>Cambridge Glass Matching Service<br/>Hours Mon-Fri 10-12 AM, 1-5 PM or by Appointment</p>                                   |
| <p><b>ISAACS ANTIQUES</b><br/>(740) 826-4015</p> <p>See our booths in Penny Court Mall in Cambridge<br/>and White Pillars Antique Mall at Rt. 40, one mile<br/>west of I-70 Norwich Exit #164</p>                                                                                  | <p><b>ALADDIN LAMP BOOKS</b><br/>Free List</p> <p>Figurine Lamps Wanted<br/>Bill &amp; Treva Courter</p> <p>3935 Kelley Rd Kevil, KY 42053<br/>Phone/FAX 502-488-2116</p>                                        | <p><b>DEXTER CITY ANTIQUE MALL</b><br/>P. O. Box 70, Dexter City, Ohio 45727<br/>(740) 783-5921</p> <p>Located on Ohio St. Rt. 821<br/>Between Exits 16 &amp; 25 off I-77<br/>Just 30 min. South of Cambridge, Ohio</p>                   |



**NOTICE:**

When you renew your  
membership,  
**PLEASE**  
return your cards.  
It is important that we  
have your:  
**membership #**  
**current mailing address**  
**date of renewal**

**National Cambridge Collectors Inc**  
**PO Box 416**  
**Cambridge OH 43725-0416**

<http://www.cambridgeglass.org>  
**e-mail: NCC\_Crystal\_Ball@compuserve.com**

---

FIRST CLASS MAIL  
U.S. POSTAGE  
PAID  
PERMIT NO. 1  
CAMBRIDGE, OH

---

# FIRST CLASS MAIL

---

*Membership Renewal Notice*  
**If the date on your address label is 2-99,**  
**this is your LAST ISSUE of the Crystal Ball.**  
Please take a moment and renew now. Thank you!

---