



Cambridge Crystal Ball

Published monthly by National Cambridge Collectors, Inc.
to encourage and report the discovery of the elegant and boundless product of the
Cambridge Glass Company of Cambridge, Ohio

Issue No. 312

April 1999

NCC Auction 1999

Excellent Opportunity for Collectors

by Cindy Arent



Larry and Susan Everett Enjoying the Auction

An unusual occurrence takes place every year on the first Saturday of March. Over 383 lots of sparkling Cambridge glassware appear in an elegant display, catalogued and ready for sale at the Pritchard Laughlin Civic Center in Cambridge, Ohio. This wonderful event does not magically appear. It takes a tremendous amount of work by many dedicated individuals.

The 1999 National Cambridge Collectors' Auction was organized with care by chairpersons Squeek and Dorothy Rieker, Tom and Noreen Kullman, and Lynn Welker. Without their tireless effort, the Auction would not be possible. However, an auction needs an auctioneer, and Craig Connelly of Granville, Ohio, once again provided his talent to make the day a great success. Thank you!

Inside This Issue:

Rambling Into Springtime
1999 Convention Update
"Nearcut" in Harrisburg
Reproductions, Reissues, Etc.
852. Who are You?
March Quarterly Meeting Minutes
1999 Benefit Auction Results

Year after year, the annual auction provides an excellent opportunity for members, collectors, and dealers to acquire a special piece. Those in attendance have a definite edge. Prior to the auction I always highlight several items on which to bid. Then, when I actually see the glassware on display, I am more impressed by certain items

(Continued on page 5)

Cambridge Crystal Ball

Official publication of National Cambridge Collectors Inc., a non-profit corporation with tax exempt status. Published once a month for the benefit of its members. All rights reserved; reproduction in whole or in part without written permission of NCC and the author is prohibited.

Membership is available for individual members at \$17.00 per year and an additional \$3.00 for associate members (12 years of age and older, residing in the same household). Of the master member dues, \$12.00 is credited to a one-year subscription to the *Crystal Ball*. All members have voting rights, but only one *Crystal Ball* per household. **Multi-year memberships are available: 2 years for \$33.00, 3 years for \$49.00.**

1998-1999

OFFICERS AND COMMITTEE CHAIRPERSONS

President	Richard D. Jones
Vice President	Tarzan Deel
Secretary	Lynne Franks
Treasurer	Charles Upton
Sergeant-at-Arms	Michael Neilson
Acquisitions	Kelvin Moore
Budget & Finance	Dennis Snyder
By-Laws	Bud Walker
Corresponding Secretary	Charles Upton
Technology	Tarzan Deel
Membership	Jeff Ross
Museum Relocation	Richard D. Jones
Museum Facilities	Carl Beynon, Joe Miller
Museum Interior	J.D. Hanes, Marybelle Teters
Non-Glass Items	Tarzan Deel
Nominating	Joy McFadden
Program	Bill Hagerty
Projects	Bill Hagerty
Publications	Mark A. Nye
Publicity	Cynthia A. Arent
Study Group Advisor	Marybelle Teters
1999 Convention	Mark A. Nye, Bud Walker
1999 Auction	Squeek and Dorothy Rieker, Tom and Noreen Kullman, Lynn Welker
1999 Glass Show	Mary Beth Hackett, Joy McFadden
1999 Glass Dash	Bud Walker, Mike Arent
<i>Crystal Ball</i> Editor	Lorraine Weinman
<i>Crystal Ball</i> Circulation Directors ...	Lisa and Mike Neilson
WebMaster	Linda Roberts

Internet website: www.cambridgeglass.org

DUE TO FLOODING IN CAMBRIDGE, OHIO, THE NATIONAL CAMBRIDGE COLLECTORS' MUSEUM OF CAMBRIDGE GLASS AT 9931 EAST PIKE ROAD WILL NOT BE OPEN.

THE TEMPORARY NCC MUSEUM IS LOCATED IN PENNY COURT MALL IN DOWNTOWN CAMBRIDGE, OHIO.

ADVERTISING RATES

Display Rates (camera ready ads preferred)

Unit	Members	Non-Members
Full Page	\$45.00	\$60.00
3/4 Page	\$35.00	\$50.00
1/2 Page	\$25.00	\$35.00
1/4 Page	\$15.00	\$25.00
1/8 Page	\$10.00	\$15.00

(\$5.00 additional if a photograph is included in display ad)

Classified Rates

10 cents a word \$2.00 minimum

Abbreviations and initials count as words. Type sizes cannot be mixed in classified ads. **Payment in full must accompany all ad copy.** Contact Editor for copy assistance.

Dealer Directory

Six Line Maximum \$24.00 for 12 month contract

Also included - Listing on our Internet site at:

www.cambridgeglass.org

Cambridge *Crystal Ball* assumes no responsibility for items advertised and will not be responsible for errors in price, description, or other information.

Advertising copy, letters, articles, must be received by the 5th of preceding month to be considered for publication in the next issue.

Please address all correspondence (include SASE) to:
(or E-Mail NCC_Crystal_Ball@compuserve.com)

National Cambridge Collectors, Inc.

P.O. Box 416

Cambridge, OH 43725-0416

President Rick Jones 914-631-1656

or E-Mail Caprice0@aol.com

Vice President Tarzan Deel 540-869-3949

Secretary Lynne Franks 216-661-7382

NCC Museum: Phone 740-432-4245

Fax 740-439-9223

Please notify us immediately of any address change.

Opinions or information stated in any signed article or letter printed in the *Crystal Ball* are those of the author and may not agree with National Cambridge Collectors, Inc. The Editor reserves the right to refuse and to edit any material submitted for publication to conform to the editorial style of the *Crystal Ball*. Members are encouraged to write to NCC and the *Crystal Ball* sharing their knowledge and questions!

President's Message



Rambling Into Springtime

In most messages, I try to have a fun theme and follow it through in the article. This month, there were several things to discuss, so I thought I'd just ramble a touch.

Last week, we held our Annual Benefit Auction and it was extremely successful. We came surprisingly close to last year's record-breaking sales number. For those who don't know, 20% of a consignor's sale price goes to the club to help meet our expenses. The auction is one of the most important things we do each year.

We are extremely proud of the job done by Squeek and Dorothy Rieker and Tom and Noreen Kullman in coordinating this year's auction with Lynn Welker. They relieved a lot of the burden from him for which he, and the club, are much appreciative.

The prices at the auction (see page 13) continued to demonstrate the value of Cambridge Glass. Many categories of glass seemed to be impacted by the new national market created by the Internet.

While on the subject of the Internet, many of us are becoming extremely alarmed at the number of reproductions that are being represented as Cambridge Glass. I've spoken or corresponded with many collectors who are getting very timid about buying because they feel they are getting burned. This is a real travesty.

Sellers need to be more honest and buyers need to be wary of any item known to be reproduced. I'm afraid this situation is only going to get worse before it gets better. If you have a concern that you might be bidding on a repro, please contact a friend or dealer who may be somewhat more knowledgeable about Cambridge and ask the seller, before you bid, to guarantee the piece as original. Otherwise, you'd be wise to avoid bidding. Buyer beware.

There is always a value in going to glass shows to see items in person. It's easier to know the repros when you know the feel of the new stuff.

At our March Quarterly Club Meeting and at the preceding NCC Board meeting, there was considerable discussion about our Museum plans. The Board elected to no longer pursue the Power Building as an option. It was decided to be just a little rich for our current means

and ongoing operating expenses.

The discussion was among the finest I have heard in my six years on the Board. The talks were spirited, complete, and very thoughtful. The Board took their obligation as the membership's representatives very seriously. We know this is not our money we were investing, it is yours! I'm very proud of each and every one of the Board members and think you would have been too.

Then, at the general meeting when the membership met (perhaps some 100-150 members), the discussion took interesting turns. One member initiated a dialogue on what role does the museum play in the total membership experience. The sentiment was that it was just one part of the experience. Another member then asked if there was a way to get the membership's sentiment on how "urgent" it was to get a new museum quickly.

A question was framed... "I believe that it is imperative that we have a new museum by June 2000 (or in about a year and a half)." Members were then asked to vote by show of hands for one of four possible responses: Strongly Agreed, Agreed, Disagreed, or Strongly Disagreed with this previous statement. Overwhelmingly, the majority voted "Disagreed," meaning they did not feel an urgency need to be applied to our search. The follow-up discussion focused on how the Museum is just one part of the total membership experience.

It was a fascinating "conversation" and a very real demonstration of a vital membership that is sincerely interested in all facets of the club. My take-away was that we're all still vitally interested in a new museum. However, the search should be paced, smart, and not panicked. How do you feel?

The Board approved architectural renderings of what an economical but attractive and functional museum might look like. The search for available (and affordable) land goes on as does the continued efforts to raise funds and grant money to stay true to our goal of a lasting tribute and celebration of Cambridge Glass.

What a month!



Connecticut Show

At the December Connecticut Cambridge Boosters Show in Southington, CT, National Cambridge Collectors', Inc. had a display of Cambridge Etchings. Special thanks to the Boosters - the Marottos, Nussbaums, Thompsons, Fehers, and Kilborns among others, and to NCC members Marge and Emil Kleeman, who "manned" the booth most of the weekend.

We Get Mail

NCC Member Zeke Cunningham writes:

The Postal Service recently announced the future release of a 15-pane issue of stamps depicting various methods of glassmaking.

The release date is June 23 (sound familiar?), with first-day issue from the postmaster in Corning, NY 14830

Thought this might be of interest.

(Thanks, Zeke. Something like this is always of interest to members. - EDITOR)

Make 1999 Convention Plans Now

*and then look at what
else is ahead this year*



1999 Calendar Planning

Mark your calendars now with these important events during the coming year:

June 24-27

1999 National Cambridge Collectors' Convention
Pritchard Laughlin Civic Center

June 25-27

NCC Glass Show and Sale
Pritchard Laughlin Civic Center

June 26

"Glass Dash" ("flea" market)
Beech Grove Family Development Center
Cambridge, Ohio

June 27

NCC Annual Meeting
Pritchard Laughlin Civic Center

August 28

August Quarterly Meeting and Work Session
To Be Announced
Cambridge, Ohio

November 6

November Quarterly Meeting and
Education Program
Cambridge Country Club (tentative)

(NCC AUCTION - Continued from page 1)

after viewing them. This year I saw another piece that I just had to have. I purchased the #2750 Colonial punch bowl, underplate, and cups. Was this purchase planned? No! This is just one example of "when you actually see it – you must have it."

As usual, the 1999 Auction contained an excellent representation of the many types of elegant glassware produced by The Cambridge Glass Company. All of the favorites were present including Nearcut, nudes, Caprice, opaques, swans, Crown Tuscan, etchings, and more.

Many of the familiar faces were present in the crowd as well as some new ones that we hope will return in June for NCC Convention 1999.

The highest priced item of the day was the #1222 Bluebell turkey which sold for \$950. Other items that drew high prices were: a Mardi Gras 10-inch vase - \$750; a 623 Pink Hunt Scene bridge set - \$475; and the Rubina 8-inch candlesticks - \$425.

Advertising items seemed to be quite popular. A Pistachio advertising prism sold for \$325, a Pink prism for \$375, and the Cambridge oval sign for \$220.

This year the #3011 Nude or Statuesque line demanded some very good prices. A few of these were: an Amethyst 3-oz. cocktail - \$180; a Pistachio 3-oz. cocktail - \$210; a Pink 3-oz. cocktail - \$375; and a Tahoe Blue 3-oz. cocktail - \$570. A #3011/11 Peach Blo saucer champagne realized \$500.

Swans are always a favorite and this year was no exception. A #1040 Crystal 10-inch Style III swan went home with a happy bidder for \$200. The #1044 Pearl Mist 10-inch swan brought \$825 and the #1044 Peach Blo 10-inch Style I sold for \$400.

Prices for all auction items can be found on page 13 of this issue.

The Internet may be all right for a little daily thrill, but you can't actually examine the items, you don't hear the rhythmic chant of the auctioneer, and you can't look across the room and see your competition. There is nothing like a good old-fashioned auction.

We are now looking forward to the 1999 June Convention, Glass Show, and Glass Dash. Make your reservations now and plan to attend. See you there!



Shown above are some of the exceptional items sold: Cambridge oval sign, top left corner; to the right, advertising prisms; Mardi Gras 10-inch vase, bottom row; Bluebell turkey, highest-priced item of the day, in center; Tahoe Blue 3-oz. Nude cocktail, to the right of the turkey.

1999 NCC CONVENTION MOTEL INFORMATION

The following motels are all located in Cambridge at Exit 178, Ohio Route 209, off of Interstate 70:

BEST WESTERN CAMBRIDGE

1945 Southgate Parkway
740-439-3581
No extra for children
One week cancellation notice
Approximately 50 rooms available
\$55 single or double

DEER CREEK MOTEL

2325 Southgate Parkway
740-432-6391
Reservations 800-637-2917
24 hours cancellation notice
Approximately 50 rooms available
\$45.95 single / \$52.95 double

TRAVELODGE OF CAMBRIDGE

State Route 209 North
740-432-7375
One week cancellation notice
Approximately 15 rooms available
\$55 double 1 bed / \$59 double 2 beds

AMERIHOST CAMBRIDGE

State Route 209 South
740-439-1505
Reservations 800-434-5800
\$62 single or double (includes continental breakfast)

HOLIDAY INN CAMBRIDGE

2248 Southgate Parkway
740-432-7313
One week cancellation notice
Approximately 20 rooms available
\$65 (includes breakfast)

DAYS INN CAMBRIDGE

2328 Southgate Parkway
740-432-5691
\$69 (subject to availability)

BOGART'S BED & BREAKFAST

62 West Main Street
New Concord, OH
740-872-3514 / 740-826-7439
Call for rates

To obtain the quoted rate at any of the motels, you must specify you are attending the NCC, Inc. Convention. (Most places recognize "Cambridge Glass Convention" more than they do "NCC.") It is strongly recommended that NCC members and friends attending the 1999 Convention book their reservations as soon as possible. In every instance there are only a certain number of rooms available at the stated group rate. When these are booked, you may have to pay a higher rate.

*Plan now to attend NCC Convention 1999
Make your reservations early!*

1999 Convention Update

by Mark A. Nye, Convention Chairman

I am pleased to announce the 1999 Banquet speaker will be Marti De Graaf. In keeping with the theme of this year's convention, "It's A Small, Small World," Marti's topic will be "Perfumes." She and her husband, Toby Mack, live in Chicago, IL, and have been members of NCC for a number of years. More on Ms. De Graaf and her topic in a future issue.

The convention registration form will appear in next month's issue. The form must be completed and returned by June 10 if you are planning on attending the 1999 convention.

We are still planning on having a Dutch Treat get together on Wednesday night and a continental breakfast Friday morning. At this writing, the sites for these two events have not been determined. They will be announced in the May issue and listed on the registration form.

Plan on bringing your favorite "little piece" of Cambridge glass to Convention for display at Bring and Brag.

See you in June.

"Nearcut" in Harrisburg

by John E. Corl

Once again the Elegant Glass Collectors study group will be setting up a display and book sales table at the Eastern National Antiques Show and Sale in Harrisburg, PA. The show dates are April 23, 24, and 25.

We have been invited to join forces with the National Pattern Glass Collectors Club and participate in a program on pressed toy pattern glass. A few of our members, Charles Upton, Willard Kolb, and Bud Walker have volunteered their time and talents to present and represent The Cambridge Glass Company and share information and Show & Tell on the "toy" Nearcut pieces that were produced. We also plan to have an extensive display of the many patterns of the Nearcut line.

The second part of our Cambridge Glass Company display will be devoted to the many beautiful "blue" colors produced by the company. We will feature Royal Blue, Moonlight Blue, Eleanor/Willow Blue, and the early production "blues" such as Windsor, the "2" Cobalts, and Bluebell.

We would like to invite any and all members of NCC to stop by any of the days of the show. Bring a piece of any of the aforementioned lines of Cambridge glass to share. We are also looking for some volunteer help to man the table and simply converse and chat with people about Cambridge glass. No previous experience is required. Just bring yourself and your favorite stories about Cambridge glass.

Last, but not least, bring an extra \$10.00 along. Save it to "win" one of the new and beautiful tote bags with the NCC logo on it. Show everyone you are proud to be a member of NCC. A \$10.00 donation to the NCC Museum Fund will "win" you one of these canvas tote bags.

We all hope to see many of our friends and fellow members during the show. We also hope to make many new friends and members for NCC. Till we meet again, Happy Hunting and Best Wishes from the Elegant Glass Collectors study group.

Harrisburg Eastern National Antiques Show and Sale - April 23, 24, 25

March Auction Moments

BELOW: Tom and Norcen Kullman setting up glass .



ABOVE: Carl Beynon setting up and inspecting a display in preparation for the Friday evening preview.



ABOVE: Anna Walker doing a brisk business selling books and study group tote bags and T-shirts.



ABOVE: Bud Walker assisting onlookers at the Friday Auction preview.



TO THE LEFT: Lynn Welker studying a Show & Tell item at Friday evening meeting.



ABOVE: Auctioneer Craig Connelly conducting business with the help of Mary Beth Hackett (center) and Joy McFadden (right).

Reproductions, Reissues, Etc.

by Mark A. Nye

According to a Summit Art Glass flyer dated July 1997, they were at that time offering two swans from Cambridge molds in plain or irridized Cobalt Blue, the 1042 six-and-one-half inch and the 1043 eight-and-one-half inch. Also offered in this same color, plain or irridized, was the Caprice quarter-pound butter dish and the Everglades Buffalo Bowl. The latter comes from the mold designed to produce the Everglade #28 shallow buffalo bowl and was never sold as this shape bowl by Cambridge in any color, much less Royal Blue, the Cambridge equivalent of Summit's Cobalt Blue. (Many people don't realize that most, if not all plates and shallow bowls, are formed from bowls or nappies, as they were called. The piece is pressed and removed from the mold as a nappy. After reheating in the glory hole, a handfinisher flares out the bowl into a shallow bowl or plate.) The Summitt buffalo bowl was previously made at least once before, in the late 1980s, not long after the mold was acquired from Imperial.

There were two miniature sets based on Cambridge molds listed in the July 1997 Summit Art Glass flyer. Using the molds for Caprice 93 nut dish and a small nappy, a Caprice pattern berry set has been offered for a number of years. In this flyer it was available in Cobalt Blue, plain or irridized. These pieces were never made by Cambridge in Royal Blue and are sold by Summit as they come from the mold. Hence, the pieces do not resemble the original Cambridge items. A similar set, called a "5 pc. 4 toed Ice Cream set" utilizes molds from the 3400 line. Again, the pieces have received no hand finishing and differ from the Cambridge originals.

During the summer of 1998, Summit produced a color called Princess Purple in honor of the late Diana, Princess of Wales, and was offered plain or irridized. Two "Caprice" pieces were made in this color: the quarter-pound butter and a tray, probably the 37 six-inch oval tray. The previously described miniature sets were also pressed in Princess Purple. Additional items offered in Princess Purple were a "Virginian Open Candy" and the Mt. Vernon 2-handled salt dip. Just remember, Virginian was made only in Crystal. The Summit flyer indicated that only 200 pieces of each item were to be made in Princess Purple. It was not clear if this meant 200 plain and 200 irridized or just 200 pieces total, plain and irridized.

The Summer 1998 Summit Art Glass flyer listed several items that were available in Cobalt Slag, including two made from Cambridge molds: a Shell pin tray and a Shell soap dish. If you are aware Cambridge never made a Cobalt Slag, you will not mistake these pieces for Cambridge. These same two pieces were also offered in Cobalt Blue (similar to Cambridge's Royal Blue) and thus a color Cambridge did use for a few pieces in the Shell line. In these instances, know your dealer and pay attention to the quality of the glass. The pin tray is probably the piece Cambridge sold as a seven-inch plate. However, I am not sure what the soap dish may be as I have not seen these pieces.

Also offered in the Summer 1998 Summit Art Glass flyer was a four-inch Shell mint and a "2 in. Shell" in a color designated Emerald Green. The mint is probably what Cambridge sold as the 4-inch Sea Shell ash tray. I am not sure what the origins of the 2-inch Shell are. Once again, this is an instance where it pays to know the dealer and to study the quality of the glass and the color.

The controversy of reproductions versus reissues and what to call pieces of glass made from original molds but not by the original owners of the mold will probably never be resolved to the satisfaction of all parties. My own interpretation of a "reproduction" is that the piece is a copy of the original but not made using the original mold. Reproductions sometimes differ from the original in varying degrees due to variations in the new mold but are intended to be copies of the original. A reissue involves the use of the original mold either by the original maker (which is not uncommon by long-running companies, Fenton for example) or by new owners of an old mold or piece of equipment. In these cases it is often difficult to distinguish between the original issue and the reissue unless there are color differences or the lack of hand finishing. In the later case, the piece is not really a reissue but rather a "new" piece since the original mold owner never sold a similar item. The buffalo bowl made using the Cambridge Everglade buffalo plate mold is a good example of such a piece.

852, Who are You?

by Georgia G. Otten

I have collected Rose Point etch forever! Well, not exactly, but a long time. There are thrills to be had when one collects. I can remember learning that Rose Point came on colors! Wow! Had to have it! I can recall being amazed to learn about and finally to see a piece of Pressed Rose Point. Had to have one, or two! And gold-encrusted Rose Point? A must for the collection! And an entire book about Rose Point? Outstanding, go get it! If all that wasn't quite good enough, I came across china by Pope-Gosser and Steubenville in a pattern named, you guessed it...Rose Point! Well, yes, I wanted some of that too! Do I need to mention Wallace Sterling? That company makes a Rose Point pattern. ? Yes. Probably a good thing that I did not hear any mention that the Belgium Rose Point lace wedding veil worn by Jacqueline Kennedy might be sold at auction...was it?



CUTTING # 852
CAMBRIDGE ROSE POINT

I know there are many Cambridge collectors who concentrate on Rose Point and that none of what I have mentioned is exactly news; however, perhaps this is: Cambridge cutting # 852 is ROSE POINT! Be still my heart! I have seen cut Candlelight and cut Wildflower and now I am looking for a piece of CUT ROSE POINT! You can see a picture of the Rose Point cutting which is provided herein. I admit it does not in any way resemble the etching of Rose Point, but Cambridge named it "Rose Point" so I will add it to my list of wants!

Okay #852, I know **WHO** you are. Now I want to know **WHERE** you are!

ANSWERS

Cambridge by the Numbers

(page 15, March issue)

KEY:

Sweetheart; Manor; Plaza; Silver Maple;
Ivy; Simplicity; Tempo; Trumpet; Cathedral;
Heirloom; Cascade; Lily of the Valley;
Wedding Rose; Melody; Cambridge Circle;
Classic

You are Invited to the 25th Annual Convention, Show & Sale

Friday, April 30

8 am - 7 pm

Saturday, May 1

7 am - 5 pm

See the RUBY STRETCH GLASS collection of nationally known dealer/collector, Bill Crowl and meet author-researchers John Madeley, Dave Shetlar, Berry Wiggins, and James Measell. See glass by Fenton, Imperial, Northwood, U.S. Glass and many more!

The Lafayette Hotel

101 Front Street

Marietta, Ohio

Sponsored by The Stretch Glass Society

March Quarterly Meeting Minutes

Pritchard Laughlin Civic Center

March 5, 1999



President Rick Jones called the meeting to order at 7:50 p.m. The members voted to dispense with the reading of the November Quarterly Meeting Minutes and to approve them as published in the *Crystal Ball*.

Charles Upton presented the **Treasurer's Report**. Fund balances as of February 28, 1999 are: Operating Fund, \$78,911; Museum Fund, \$64,135; Building Fund, \$48,994; and Endowment Fund, \$9,679; for a total of \$201,719. Charlie stated that if anyone would like detailed reports of the fund balances or the annual report, you may pick them up from him.

Committee reports were presented from the following committees:

Corresponding Secretary: Charles Upton reported that he has been receiving a lot of mail, mostly from orders for Scottie Dogs.

Technology: Tarzan Deel thanked Linda Roberts for working on accessing our Website, which she will be updating in the near future. Our previous Webmaster had been unable to continue his work, and for a time we did not have access to the Website. We have now changed our procedures so that multiple people have access with the appropriate securities.

Membership: Jeff Ross reported that our membership total has jumped in the last 90 days. We have 1,383 members as compared to 1,338 in November. The total of 1,383 is made up of 997 master members, 378 associates, four lifetime, and four honorary. Our new members have come in from the Website and from glass

shows. It is important that we continue to increase our number of committed members. Jeff is working on the permanent membership cards and he appreciates your patience. Jeff will also continue work on the regional program, and he is working with Marybelle Teters to generate study group interest. They are setting up a dedicated workshop session at the NCC Convention for the regional program and study groups. If you would like to help out with the regional program, you may contact Jeff at jaross@cambridgeoh.com.

Museum Facilities: Carl Beynon will continue to keep the grass cut at our property on Route 40.

Museum Interior: Marybelle Teters announced that she will be available this auction weekend if you would like to pick up glass which you had loaned to the Museum. She will be glad to meet you there.

Non-Glass Items: Tarzan Deel has been doing research on preserving our paper. He has received two bids and is waiting on a third. The committee will then decide which paper items are to be specially treated and which may be dried out and xeroxed.

Nominating: Joe Andrejcek reported for Joy McFadden. Members up for reelection this year are: Kelvin Moore, Bud Walker, and Lynn Welker. Joe thanked Kelvin for the work he has done since he will not be running for reelection. Besides Bud and Lynn, the nominating committee has selected John Corl, Dave "Squeek" Rieker, and Sharon Miller to complete the slate.

(Continued on page 12)

(MEETING MINUTES - Continued from page 11)

Projects: Bill Hagerty summed it up in one word - "THANKS!" 400 pair of Scottie Dog bookends will be made in a couple weeks. 315 pair have been ordered and will be shipped out. Bill showed us a special blue paper that will be attached to each Scottie Dog, with a picture of a Scottie Dog and some memorable words about our Scottie Dog project. Over \$23,000 has been raised so far!

Publications: Mark Nye was not present, so Rick reported on George Stamper's research on publishing a "rare Cambridge" book. This project could operate over time, such as *Colors in Cambridge Glass*. As a fundraiser, it would not be a quick way to raise money, but it would be a wonderful new addition to our list of available books.

Publicity: Cindy Arent reported that the show cards and posters were printed. She encouraged members to take them home and distribute them in antique shops and malls around the country. This is our best form of free publicity.

Study Group Advisor: Marybelle Teters will be working with Jeff Ross on a workshop session to be held during the Convention on study groups and the regional program.

1999 Convention: Rick Jones reported that the theme for this year's convention is "It's a Small, Small World," featuring smalls made by Cambridge. Last year's 25th Anniversary Convention was the most well-attended in the club's history. Rick encouraged all of us to start the year on a positive note by coming together for this year's convention and making it the most exciting that we've ever had. Although we have spent this year dealing with fallout from tragedy, we have remained strong as a people with a purpose and a passion. Make your reservations now!



President Rick Jones presiding over meeting as treasurer and corresponding secretary Charles Upton discusses the treasurer's report with the membership.

1999 Glass Show: Mary Beth Hackett and Joy McFadden, our co-chairs for the Glass Show, have sent the contracts out to the dealers and are anticipating a fantastic show.

1999 Glass Dash: Bud Walker reported that we already have a full house for the Glass Dash, with a waiting list.

Museum Relocation: Rick Jones reported on the progress of the committee and asked Charlie Upton to jump in at any time with additional comments. We had to review our assets and decide if we were prepared to make an offer on the Ohio Power Building which had been discussed at the November meeting, and for which the asking price was \$380,000. Out of our assets totaling approximately \$200,000, we could pull out \$150,000. This could be combined with pledges made and money raised from the Scottie Dog project. Dennis Snyder had made calculations to determine that we could take out a mortgage of \$150,000, which is a significant commitment to consider. Other money-making efforts are in progress, but have not reached a point where we could add to our total from these. After adding to the \$380,000 another \$50-100,000 for refitting expenses to the building, and considering the increase in operating expenses, the NCC Board decided not to pursue this opportunity any further. It is beyond our means at this time.

Out of this experience, we have learned where we stand financially today. The Board has authorized architectural drawings for a new structure, not site-specific. Club members present at the meeting discussed other opportunities, including doing something with the existing storage building. Last year in June, Dave Chorey made a set of drawings for this, with a front like the Cambridge Glass Factory. Bud Walker has done research on pre-fab buildings. The Museum Relocation committee will continue to look at new properties as they come on the market. Club members discussed our original museum building, and some reasons were given as to why the Board had decided not to use it. The two main reasons were flooding and the fact that the glass consignors did not want to put their glass back in.

Club members also discussed their feelings on whether or not they felt an urgency to have a museum again. A show of hands reflected that a majority of those present did not strongly feel that we had to get into a new museum by June of the year 2000. Until our goal of a new museum has been reached, we will continue our display at Penny Court to show the world how beautiful Cambridge Glass is. Members applauded those who put together the Penny Court display.

Old Business: None

New Business: John Corl announced that the Elegant

1999 Benefit Auction Results - Prices Per Lot

1. 10.00	53. 140.00	105. 65.00	157. 140.00	208. 30.00	260. 80.00
2. 17.50	54. 220.00	106. 40.00	158. 45.00	209. 70.00	261. 45.00
3. 20.00	55. 225.00	107. 150.00	159. 35.00	210. 100.00	262. 45.00
4. 80.00	56. 12.50	108. 30.00	160. 70.00	211. 40.00	263. 200.00
5. 55.00	57. 7.50	109. 65.00	161. 45.00	212. 260.00	264. 65.00
6. 45.00	58. 40.00	110. 160.00	162. 55.00	213. 80.00	265. 45.00
7. 50.00	59. 75.00	111. 180.00	163. 30.00	214. 95.00	266. 275.00
8. 65.00	60. 50.00	112. 210.00	164. 90.00	215. 150.00	267. 150.00
9. 10.00	61. 50.00	113. 75.00	165. 55.00	216. 95.00	268. 350.00
10. 100.00	62. 25.00	114. 60.00	166. 110.00	217. 100.00	269. 20.00
11. 50.00	63. 45.00	115. 100.00	167. 125.00	218. 67.50	270. 35.00
12. 30.00	64. 80.00	116. 105.00	168. 75.00	219. 95.00	271. 150.00
13. 30.00	65. 50.00	117. 95.00	169. 45.00	220. 65.00	272. 5.00
14. 90.00	66. 160.00	118. 425.00	170. 50.00	221. 220.00	273. 65.00
15. 295.00	67. 30.00	119. 40.00	171. 60.00	222. 95.00	274. 35.00
16. 20.00	68. 75.00	120. 100.00	172. 200.00	223. 55.00	275. 90.00
17. 75.00	69. 15.00	121. 70.00	173. 165.00	224. 120.00	276. 100.00
18. 25.00	70. 55.00	122. 20.00	174. 140.00	225. 45.00	277. 55.00
19. 75.00	71. 55.00	123. 275.00	175. 90.00	226. 120.00	278. 20.00
20. 50.00	72. 22.50	124. 45.00	176. 110.00	227. 200.00	279. 65.00
21. 35.00	73. 110.00	125. 65.00	177. 12.50	228. 115.00	280. 40.00
22. 60.00	74. 100.00	126. 60.00	178A. 100.00	229. 275.00	281. 350.00
23. 40.00	75. 35.00	127. 55.00	178. 170.00	230. 110.00	282. 125.00
24. 20.00	76. 185.00	128. 65.00	179. 40.00	231. 55.00	283. 200.00
25. 55.00	77. 25.00	129. 20.00	180. 160.00	232. 275.00	284. 100.00
26. 10.00	78. 65.00	130. 27.50	181. 10.00	233. 35.00	285. 65.00
27. 60.00	79. 115.00	131. 950.00	182. 12.50	234. 30.00	286. 65.00
28. 60.00	80. 80.00	132. 150.00	183. 10.00	235. 70.00	287. 50.00
29. 30.00	81. 60.00	133. 25.00	184. 95.00	236. 10.00	288. 50.00
30. 60.00	82. 45.00	134. 70.00	185. 25.00	237. 70.00	289. 85.00
31. 20.00	83. 35.00	135. 45.00	186. 70.00	238. 5.00	290. 35.00
32. 50.00	84. 125.00	136. 170.00	187. 275.00	239. 35.00	291. 10.00
33. 35.00	85. 175.00	137. 105.00	188. 25.00	240. 20.00	292. 45.00
34. 50.00	86. 150.00	138. 45.00	189. 7.50	241. 30.00	293. 320.00
35. 40.00	87. 55.00	139. 115.00	190. 35.00	242. 30.00	294. 375.00
36. 30.00	88. 40.00	140. 20.00	191. 475.00	243. 7.50	295. 570.00
37. 80.00	89. 25.00	141. 85.00	192. 40.00	244. 7.50	296. 55.00
38. 100.00	90. 15.00	142. 25.00	193. 27.50	245. 7.50	297. 65.00
39. 180.00	91. 25.00	143. 110.00	194. 80.00	246. 20.00	298. 400.00
40. 335.00	92. 260.00	144. 350.00	195. 190.00	247. 275.00	299. 135.00
41. 36.00	93. 325.00	145. 60.00	196. 35.00	248. 45.00	300. 70.00
42. 65.00	94. 375.00	146. 75.00	197. 155.00	249. 210.00	301. 15.00
43. 15.00	95. 67.50	147. 40.00	198. 60.00	250. 10.00	302. 65.00
44. 25.00	96. 20.00	148. 5.00	199. 20.00	251. 100.00	303. 65.00
45. 55.00	97. 70.00	149. 25.00	200. 750.00	252. 500.00	304. 65.00
46. 25.00	98. 155.00	150. 45.00	201. 75.00	253. 125.00	305. 50.00
47. 45.00	99. 155.00	151. 110.00	202. 40.00	254. 135.00	306. 110.00
48. 20.00	100. 30.00	152. 160.00	203. 30.00	255. 80.00	307. 55.00
49. 100.00	101. 30.00	153. 60.00	204. 80.00	256. 135.00	308. 80.00
50. 200.00	102. 40.00	154. 65.00	205. 12.50	257. 825.00	309. 100.00
51. 300.00	103. 150.00	155. 60.00	206. 25.00	258. 135.00	310. 50.00
52. 120.00	104. 425.00	156. 150.00	207. 75.00	259. 75.00	

(Continued on page 14)

NATIONAL STUDY GROUP REPORTS

Study Group #13

The Miami Valley (Ohio) Study Club

The meeting of the Miami Valley Study Club was held at the Huber Heights Public Library on February 9, 1999. President George Stamper presided and 20 members and two guests were in attendance.

During our business meeting, we discussed our study club's page on the *activedayton.com* website, Phyllis Smith's auction, and a revision of our program schedule since our January meeting was canceled due to bad weather. Our programs for the remainder of the year are:

- March: Figurals - led by the Huffords
- April: Heat Sensitive Glass - led by Ellen Teller
- May: Chantilly - led by Diane Gary

The program on Nearcut Marjorie was led by Celia and Bill Dear, who rounded out their presentation with a lovely display of glass, an original price list, an article on

child labor in the glass industry published in 1906, and delicious treats of brownies and pineapple sherbet made from vintage recipes of the Nearcut era.

Show and Tell: Members and guests brought the following items to show us: #441 10 1/2" Decalware comport; #410 5 1/4" x 6 1/4" Emerald fan vase, etched #731 Rosalie; #344 Moonlight Blue Alpine Caprice 4 1/2" vase with ruffled top; #1206 76 oz. Twisted Optic Carmen jug with ice lip; #617 Ebony cigarette holder; #3400/40 sugar shaker with glass top, with Rock Crystal engraving #560; #1233 9 1/2" vase, etched Rosepoint; #1066 ivy ball, etched Rosepoint; #P500 pair of candleholders, etched Rosepoint; #2651 Nearcut Inverted Feather cracker jar; #W125 Caprice Milk 3 1/2" vase; #3011 Pistachio ashtray; January 1, 1940 Catalog; price guides for January 1945 and June 1949.

— submitted by **Judy Rhoads, Secretary**

(Continued from page 13)

311. 60.00	336. 15.00	361. 35.00
312. 120.00	337. 10.00	362. 25.00
313. 35.00	338. 85.00	363. 30.00
314. 15.00	339. 10.00	364. 100.00
315. 65.00	340. 40.00	365. 125.00
316. 95.00	341. 35.00	366. 115.00
317. 55.00	342. 20.00	367. 55.00
318. 250.00	343. 30.00	368. 45.00
319. 75.00	344. 30.00	369. 45.00
320. 15.00	345. 45.00	370. 330.00
321. 80.00	346. 25.00	371. 15.00
322. 60.00	347. 20.00	372. 30.00
323. 28.00	348. 35.00	373. 20.00
324. 40.00	349. 175.00	374. 45.00
325. 50.00	350. 30.00	375. 45.00
326. 60.00	351. 35.00	376. 75.00
327. 15.00	352. 7.50	377. 200.00
328. 55.00	353. 110.00	378. 10.00
329. 25.00	354. 55.00	379. 150.00
330. 45.00	355. 110.00	380. 50.00
331. 10.00	356. 10.00	381. 20.00
332. 20.00	357. 45.00	382. 160.00
333. 35.00	358. 35.00	383. 40.00
334. 75.00	359. 60.00	
335. 55.00	360. 25.00	

WE CLEAN CLOUDY GLASS! **SATISFACTION GUARANTEED**

Yes, it is true that we really can restore the interior of your cruet, vase, decanter and other internally etched items back to near original condition.

We do not oil, wax or cover up the sickness in any way! We actually remove it.

No items are too sick to clean! If we cannot clean an item to meet your satisfaction, the cleaning is FREE!

Send no money up front. When we return your item a bill will be enclosed for the postage and cleaning. If you are not satisfied, only the return postage is requested.

Most items clean in 7-8 weeks. All glass is handled and cleaned at your risk. Some very cloudy items may take several additional weeks.

Cocktail Shaker	\$35.00	Salt Shaker (1)	\$25.00
Cologne	\$27.50	Salt Shaker (2)	\$42.50
Cruet	\$27.50	Vases (under 10")	\$30-\$35.00
Decanter	\$35-\$45.00	Vinegar & Oil	\$30.00
Lavendar Jar	\$25-\$35.00	Water Bottle	\$30-\$40.00

Ship to: Kim Carlisle & Associates
28220 Lamong Road, Dept. C
Sheridan, IN 46069
(317) 758-5767

kcarlisl@indy.net

1999

(MEETING MINUTES - Continued from page 12)

Glass Collectors study group will display a presentation of Cambridge Glass at the Harrisburg show, April 23-25. The National Pattern Glass Collectors Club has also asked them to join forces on a program and display Nearcut toy pieces. A presentation will also be done on blues.

Club members in Colorado are setting up a Cambridge Glass display at their local glass show.

Study groups are selling tote bags and t-shirts to raise money for the museum. These were for sale at the meeting and are for sale now, so please buy some. You can use more than one of each.

The meeting was adjourned until Joy McFadden arrived and explained that we did not follow parliamentary procedure when discussing the upcoming election. The meeting was reopened, the Nominating Committee presented the names of the five candidates and asked members for any other nominations. Les Hanson was nominated, he accepted the nomination, and was added to the slate. At this time a motion was passed that nominations be closed.

The meeting was then adjourned.

Respectfully submitted,

Lynne R. Franks
Secretary

An hour of concentrated work does more to kindle joy, to overcome sadness, and to set your ship afloat again than a month of gloomy brooding.

Benjamin Franklin



The Bay State Heisey Collectors Presents
21st Annual Show & Sale
Glassware of all Periods
April - 24th & 25th - 1999
Sat 10-5pm - Sun 11am-4pm
J. F. K. Junior High
Lexington St., Waltham, MA
Louis for info. t: 617.387.0017
e: louis@commcopy.com

"Almost before I knew it, we had a complete set of CRYSTOLITE"



Stems Without Thorns

As the world's largest supplier of discontinued and active china, crystal, flatware and collectibles, Replacements, Ltd. has over 325 different patterns of Cambridge crystal.

And however much we enjoy selling pieces which were once thought irreplaceable, we love buying them as well. Thanks to people like you, our crystal inventory currently numbers in the hundreds of thousands, and the numbers keep growing every year.

So, if you've been unsuccessfully searching for that elusive piece of Cambridge - or any other type of fine crystal - call us for a free list of pieces available in your pattern. And, if you're looking to sell pieces you currently have, we can help you there, too.

REPLACEMENTS, LTD.

China, Crystal & Flatware • Discontinued & Active

1-800-REPLACE 1089 Knox Road.
(1-800-737-5223) PO Box 26029, Dept. CB,
Greensboro, NC 27420



23rd ANNUAL NIGCS CONVENTION

"A Galaxy of Imperial Glass"
JUNE 4, 5 and 6, 1999
ST. CLAIRSVILLE, OHIO

Belmont Technical College
(Four miles west of Hampton Inn at I-70 Exit 213)

GLASS SHOW & SALE
Saturday, June 5 • 1-5 pm Sunday, June 6 • 11-3 pm
Admission: \$2.00 Donation

FREE PUBLIC SEMINARS

Saturday, June 5 • 8:30-10:00 am Coffee & Conversation With Former Imperial Employees	Sunday, June 6 • 9:30-11:00 am "Imperial Stretch Glass" Dave Shetlar & John Madeley
---	---

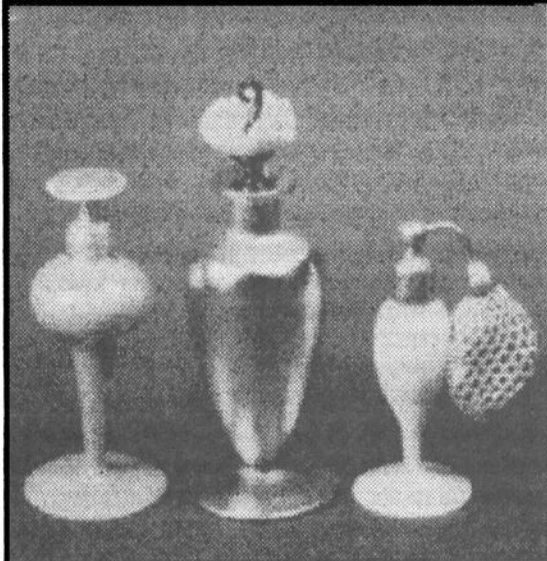
BANQUET Saturday, June 5 at 6:30 pm
Open to the Public • Reservations required
Undo's Restaurant • St. Clairsville, Ohio
Speakers: Dave Shetlar & John Madeley

GLASS I.D. Sunday, June 6 • 12:30-2 pm

National Imperial Glass Collectors' Society, Inc.
P.O. BOX 534 - BELLAIRE, OH 43906
(410) 995-1254 • (440) 442-0279 • (630) 556-4301



Perfume Bottles Highlight Annual Exhibition



The Museum of American Glass Annual Exhibition

"Vanity Vessels: The Story of the American Perfume Bottle"

April 10 - October 24, 1999

The exhibit of over 150 perfume bottles will trace the history of the earliest American examples of scent or pungent bottles up to contemporary designs created by studio glass artists.

Cut glass, Art glass, Art Nouveau, Art Deco and Commercial perfume bottles will also be included. Examples will be borrowed from institutions and private collections.

A catalog is planned to accompany the exhibition

And Anna Walker sends us:

Cambridge On Display

**Cambridge does it again!
Cambridge glass will be included in
this special exhibit.**

Secretary's Note...by Lynne Franks

After listening to the tape recordings of our March meeting, I noticed that we forgot to do something very important. We have cried over the loss of our Museum. We have worked hard to raise money for a new museum, and we have thanked those who have worked so hard on the fantastic money-raising projects that are such a success. We are teaching others by displaying beautiful Cambridge glass at shows across the country, at Penny Court Mall, and with our Website and the *Crystal Ball*. We are showing the world that we are still strong after a year of tragedy, and that Cambridge glass itself is strong! Other glass would never have survived such a flood. We have applauded those who work on making all of these things possible. We are dreaming of a new museum somewhere, somehow. But I miss the old Museum and I will never forget it. It will always be a very important place in my memory, and I wish it were still there as it was. Had I known it would be gone someday, I would have made a point to visit it more often. Can we thank the people who worked so hard on that very special place which added so much to our lives through all the years...those who raised the money, made plans, set up the interior, and those who did all the work inside and outside, year after year, to maintain such a beautiful, breathtaking display. Can you remember how you felt the first time you walked in and saw it all? If you were not a NCC club member at the time, I'll bet you joined shortly afterwards! Can you remember the excitement of going back and discovering that now you could actually identify the etchings, colors, and even some line numbers? And after you had visited the Museum so many times that you had lost count, you could still see pieces that somehow you had missed in all those other visits, and you could still learn even more, and "Wow, I didn't know Cambridge made that!" Remember the workers' reunions at the Museum when they would show you pieces they made and tell stories about making the glass and working at the factory? Thank you, all of you who worked so hard for so many years to give me this experience and such wonderful times!



**Don't Miss Your Chance
~ Limited Time Offer ~
Order NOW**

**Scottie Dog Book Ends
3" deep x 5" wide x 6 1/4" high**

WON'T YOU HELP?

The Ohio flood of 1998 destroyed the National Cambridge Collectors' Museum. Due to our great loss we are offering the public an opportunity to help by purchasing a special edition of Scottie Dog bookends. These Scotties will be made from the original Cambridge Glass mold in a "Moonlight" blue color, and will be clearly marked with the N.C.C. name, date and Mosser logo. The cost will be \$100 per set. Shipping charge is \$10 per set, unless picked up at the N.C.C. Convention in June 1999. If you pick up at the 1999 Convention, or are an Ohio resident, you will be subject to 6 1/2% sales tax (\$6.50 per set).

Thank you!

Order blank

Name: (please print) _____

Address: _____ Phone (____) _____ - _____
(UPS requires a street address) (Required if you give a P.O. Box)

City: _____ State: _____ Zip Code _____ - _____

No. of pairs: _____ X \$100.00 = \$ _____	Check number \$ _____
Shipping - \$10.00 per pair = \$ _____	Amount \$ _____
Sales tax if Ohio Resident = \$ _____	Date _____
Or picking up at Convention = \$ _____ (\$6.50 per pair)	
Total of order = \$ _____	

Will pick up at the Convention in June 1999. - # of sets: _____ Ship # sets: _____

Make checks payable to: **N.C.C., Inc.** Mail to: **National Cambridge Collectors, Inc.**
P. O. Box 416
Cambridge, OH 43725-0416

P.S. Those of you who are dealers and are buying the above Scotties for resale, and will not be paying the State of Ohio Tax, will have to sign a tax exempt form for such and all lines must be filled out completely to be exempt from paying the State of Ohio Sales Tax.

The undersigned hereby claims exemption to purchase of tangible personal property from the National Cambridge Collectors, Inc. on and after February 5, 1999 and certifies that this claim is based upon the purchaser's proposed use of the items purchased, the activity of the purchaser, or both as shown hereon: (Exemption Number from Rule #93.

(Purchaser's Name)

(Purchaser's Address)

(Purchaser's Activity)

(By - Signature and Title)

(Date Signed)

(Vendor's License Number)

~ GLASS ~ MARKETPLACE

Classifieds

WANTED: CAMBRIDGE SWANS, all types, sizes, and colors including Cambridge swan punch cups. **Contact:** Dale Nash, 1940 Barber Drive, Stoughton, WI 53589. Phone 608-873-9294.

WANTED: "Any piece of Cambridge Etch 520, in pink." Please e-mail at dhmjh@ibm.net or phone (714) 538-6656. Thanks. Mary Jane.

WANTED: Rare or unusual pieces of Cambridge Glass, Rose Point, 3106 Rose Point stems, Marjorie etched items, decorated opaques, Cambridge Art Pottery, nude stems, swans, and novelty items. **Contact Jim & Nancy Finley, 711 W Broadway, Sedalia, MO 65301, (660) 826-5032 or e-mail: nFinley@iland.net.**

WANTED: Pink Cambridge Etching #703, Florentine. Interested in any pieces. **Linda Kaiser, 158 Pointe Vintage Drive, Rochester, NY 14626-1759, e-mail VFKaiser@aol.com, 716-227-2991.**

WANTED: 3400/160, 12" 4-toed bowl, oblong, fancy edge. Pictured in Rose Point book, page 60, 3rd row from bottom left side. Please contact **Dorothy Murphy, 414 West Ave., Apt. G, Jenkintown, PA 19046 or phone 215-576-0655.**

(CONTINUED NEXT COLUMN)

Bogart's Bed & Breakfast

62 W. Main Street, New Concord
New Concord lodging in 1830 Federal
Style home, decorated with
antiques throughout.



Bogart's Antiques

7527 E. Pike, Norwich OH
Quality Antiques Bought & Sold

OWNERS: Jack & Sharon Bogart
872-3514 or 826-7439

The DAZE Inc.

SPECIAL OFFER
6-NOV-1998
\$2.00 OFF
the 1 year subscription price
when on this form or copy of it

The Original National monthly newspaper dedicated to the buying, selling and collecting of American made glassware china, and pottery from this century. We educate and inform you each month with feature articles by top notch writers, readers letters, club happenings, reproduction news, show reports and there are hundreds of dealers to help you fill in the missing pieces of your collection. "Keep up with what's happening" . . . Subscribe today!

Name _____
Street _____
City _____
State _____ Zip _____
[] 1 year \$21.00 [] 2 years \$40.00 [] \$2.00 Single Copy
Subscription Hot Line: 1-800-336-9927
Exp. Date _____ Card No. _____
Signature _____

Orders to:

The Daze, Inc., Box 57, Otisville, MI 48463

Please allow 30 days for your first issue - Canadian Subscribers, add \$1.00 per year and subscribe by charge card only! This Special Offer may not be combined with any other special offer.

Offer Expires December 31, 1998

FOR SALE: Swans (Porcelain collector bought small estate which also contained the following): Ebony 6 1/2" Type I, 4 1/2" Type I, 3" Type I, 3" Type II - Emerald 4 1/2" Type I - Gold Krystal 3" Type II. All mint, all marked. Sell all six for \$415. **Mark Stuart (573) 886-8774 or 731-A Demaret, Columbia, MO 65202.**

ADVERTISE HERE NOW !

You never know who you are missing.

Risks

There are essentially four kinds of risk:
the risk one must accept,
the risk one can afford to take,
the risk one can't afford to take,
and the risk one can't afford not to take.

DEALERS



DIRECTORY

NOTE: When writing to the dealers listed here, please enclose a SASE!

<p>DAUGHERTY'S ANTIQUES Jerry and Shirley</p> <p>Antiques and Collectibles * Mostly Glass</p> <p>Shows & Mail Orders 2515 Cheshire No. 402-423-7426 Evenings Lincoln NE 68512</p>	<p>"HAPPINESS IS" Buddy and Kathy Stultz</p> <p>3106 Warren Court, Glen Allen, VA 23060 804-672-8102</p> <p>Specializing in American Made Glass We Buy & Sell, Shows & Mail Order</p>	<p>THE JONES GROUP Cindy Jones</p> <p>Buy and Sell Cambridge Glass 650 Riverside Drive Sleepy Hollow, NY 10591 914-631-1656 or E-Mail Caprice0@aol.com</p>
<p>Milbra's Crystal Buy & Sell Replacement and Matching Specializing in: Cambridge Milbra Long (817) 645-6066 Fostoria Emily Seate (817) 294-9837 Heisey PO Box 784, Cleburne, TX 76033 and others E-mail: longseat@flash.net</p>	<p>CRYSTALLINE COLORS Buy, Sell, and Appreciate Cambridge and Other Elegant Glass I Love Cambridge</p> <p>Lynne R. Franks 216-661-7382 Ohio & Western PA Antique Malls</p>	<p>MARY JANE'S ANTIQUES Mary Jane Humes</p> <p>2653 Burgener Dr., Decatur, IL 62521 Depression Era Items Cambridge and Other Elegant Glass mjhumes@aol.com 217 422-5453</p>
<p>THE GLASS URN 456 West Main Street, Suite G Mesa, AZ 85201 602-833-2702</p> <p>Mail Order Shows Open Shop</p> <p>CAMBRIDGE, FOSTORIA, HEISEY, ETC.</p>	<p>YOU CAN ADVERTISE YOUR ANTIQUe SHOP HERE!</p>	<p>GATEWAY ANTIQUE MALL, INC. JUST NW OF MINNEAPOLIS-ST. PAUL, MN Next to Super 8 in Rogers, MN (I-94/101 Intersection)</p> <p>85 Dealers 7 Days, 10-6 612-428-8286 ELAINE STORCK, OWNER/DIRECTOR</p>
<p>THE DEGENHART PAPERWEIGHT AND GLASS MUSEUM, INC.</p> <p>P. O. Box 186 Cambridge, Ohio 43725-0186 Intersection of US 22 & I 77 Phone 740-432-2626</p>	<p>D & D ANTIQUES Columbus, Ohio</p> <p>Dick Slifko SHOWS ONLY</p>	<p>JAMESTOWN ANTIQUES 16 E. Washington St., Jamestown, OH 45335 Rosepoint and Cambridge our Specialty</p> <p>Buy (937) 675-6491 Sell Susan and Larry Everett</p>
<p>THE GLASS CUPBOARD</p> <p>P.O. Box 652 West End, North Carolina 27376</p> <p>Marcia Ellis Cambridge, Heisey 910-673-2884 Shows, Mail Order</p>	<p>JUDY'S ANTIQUES Judy Bennett 422 S. Ninth Street (Corner of Jefferson) Cambridge, Ohio 43725 Bus. 740-432-5855 Res. 740-432-3045</p> <p>CAMBRIDGE GLASS MY SPECIALTY</p>	<p>Horse'n Around Antiques Kelvin and Heather Moore Exit 69 on Interstate 64 Woodlawn, IL 62898 e-mail: hmoore@midwest.net TEL: 618-735-9114</p> <p>Specializing in Cambridge and other Elegant Glass</p>
<p>FINDER'S ANTIQUE HOUSE 3769 Highway 29 North Danville, VA 24540 (804) 836-6782 Cambridge-Heisey-Duncan-Fostoria</p>	<p>GREEN ACRES FARM 2678 Hazelton Etna Rd., Pataskala, OH 43062 (State Route 310 North)</p> <p>Sat & Sun 1-7 PM 740-927-1882 Antiques, Crystal Glass and Collectibles</p>	<p>CRYSTAL LADY 1817 Vinton St., Omaha, NE 68108</p> <p>Bill, Joann, and Marcie Hagerty Bus. 402-341-0643 Res. 402-391-6730 Specializing in Elegant Glass & Collectibles</p>
<p>YOU CAN ADVERTISE YOUR ANTIQUe SHOP HERE!</p>	<p>YOU CAN ADVERTISE YOUR ANTIQUe SHOP HERE!</p>	<p>PENNY COURT MALL 637 Wheeling Avenue Cambridge, Ohio 100 Booths 15,000 sq. ft. HOURS: Daily 10-6 Sunday Noon-5 Closed: Easter, Thanksgiving, Christmas Call for Other Holiday Hours 740-432-4369</p>
<p>MICHAEL KRUMME Cambridge and other elegant glassware</p> <p>(213) 874-GLASS e-mail mkrumme@pacbell.net website http://www.glassshow.com</p> <p>PO Box 48225 Los Angeles CA 90048-0225 Send your want list</p>	<p>Warren and Mary Welsh Cambridge & Other Elegant Glassware</p> <p>3635 Saddle Rock Rd., Colorado Springs, CO 80918 (719) 531-5866 WELS@EARTHLINK.NET</p> <p>MAIL ORDER SHOWS</p>	<p>MARGARET LANE ANTIQUES</p> <p>2 E. Main St., New Concord, OH 43762 Lynn Welker 740-826-7414</p> <p>Cambridge Glass Matching Service Hours Mon-Fri 10-12 AM, 1-5 PM or by Appointment</p>
<p>ISAACS ANTIQUES (740) 826-4015</p> <p>See our booths in Penny Court Mall in Cambridge and White Pillars Antique Mall at Rt. 40, one mile west of I-70 Norwich Exit #164</p>	<p>ALADDIN LAMP BOOKS Free List Figurine Lamps Wanted Bill & Treva Courter</p> <p>3935 Kelley Rd. Kevil, KY 42053 Phone/FAX 502-488-2116</p>	<p>DEXTER CITY ANTIQUE MALL</p> <p>P. O. Box 70, Dexter City, Ohio 45727 (740) 783-5921</p> <p>Located on Ohio St. Rt. 821 Between Exits 16 & 25 off I-77 Just 30 min. South of Cambridge, Ohio</p>

AUCTION

All Cambridge Glass and Related Items

from the Private Collection of

Phyllis and (the late) Bill Smith

Thursday, June 24 - 10:00 a.m.

Doors Will Open at 9:00 a.m.

Pritchard Laughlin Civic Center — In the Galleria
Glenn Highway (US 40 W at I-70) Cambridge, OH

FOOD WILL BE AVAILABLE

Auctioneer: Craig Connelly

Owner: Phyllis Smith

Auction Catalogs will be available - Send large 33-cent SASE
Phyllis D. Smith, 4003 Old Columbus Road, Springfield, OH 45502-8802
Phone: (937) 323-3888

National Cambridge Collectors Inc
PO Box 416
Cambridge OH 43725-0416

<http://www.cambridgeglass.org>
e-mail: NCC_Crystal_Ball@compuserve.com

FIRST CLASS MAIL
U.S. POSTAGE
PAID
PERMIT NO. 1
CAMBRIDGE, OH

FIRST CLASS MAIL

Membership Renewal Notice

**If the date on your address label is 4-99,
this is your LAST ISSUE of the Crystal Ball.**
Please take a moment and renew now. Thank you!