



# Cambridge Crystal Ball

Published monthly by National Cambridge Collectors, Inc.  
to encourage and report the discovery of the elegant and boundless product of the  
Cambridge Glass Company of Cambridge, Ohio

Issue No. 324

April 2000

## Auction 2000 - A Great Beginning for the New Millenium

by Cindy Arent



Potential Bidders Preview the Glass Prior to the Auction

Whenever you attend the NCC Annual Auction, you take a walk into the history of the glassmaking era of The Cambridge Glass Company. The various lines, decorations, etchings, engravings, and colors tell the wonderful story of the glassware produced by the company from 1901-1958. It has been almost a century since the first glassware was made and its popularity among collectors continues to increase each year.

This was evident as a larger than usual crowd filled the Pritchard Laughlin Civic Center with many attendees needing to stand. The auction committee was comprised of Lynn Welker, Squeek and Dorothy Rieker, and Tom and Noreen Kullman. They did a superb job in making this year's auction a fundraising success.

Auctioneer Craig Connelly, his associate John Kennard, and Lynn Connelly of Granville, Ohio, deserve a tremendous amount of credit for helping to make the day run smoothly. They have the ability to keep bidders entertained and alert, as well as demanding top dollar for each item.

On Saturday morning, bidders began arriving from many states and cities throughout Ohio. We really appreciate the efforts of members that travel many miles to attend club functions.

*(Continued on page 4)*

### **Inside This Issue:**

2000 Auction Results  
2000 NCC Convention Update  
Tentative Convention Schedule  
Convention Motel Information  
Cambridge Glass of the Roaring '20s  
Early Cuttings

## Cambridge Crystal Ball

Official publication of National Cambridge Collectors Inc., a non-profit corporation with tax exempt status. Published once a month for the benefit of its members. All rights reserved; reproduction in whole or in part without written permission of NCC and the author is prohibited

Membership is available for individual members at \$17.00 per year and an additional \$3.00 for associate members (12 years of age and older, residing in the same household). Of the master member dues, \$12.00 is credited to a one-year subscription to the *Crystal Ball*. All members have voting rights, but only one *Crystal Ball* per household. **Multi-year memberships are available: 2 years for \$33.00, 3 years for \$49.00.**

### 1999-2000

#### OFFICERS AND COMMITTEE CHAIRPERSONS

|   |   |
|---|---|
| President .....                               | Tarzan Deel   |
| Vice President .....                          | Richard D. Jones  |
| Secretary .....                               | Sharon Miller   |
| Treasurer .....                               | Charles Upton   |
| Sergeant-at-Arms .....                        | Michael Neilson   |
| Acquisitions .....                            | Lynn Welker, Lynne Franks   |
| Budget & Finance .....                        | Dennis Snyder   |
| By-Laws .....                                 | Bud Walker  |
| Corresponding Secretary .....                 | Charles Upton   |
| Technology .....                              | Linda Roberts   |
| Membership .....                              | Jeff Ross   |
| Museum Relocation .....                       | Richard D. Jones  |
| Museum Facilities .....                       | Carl Beynon, Joe Miller   |
| Museum Interior .....                         | Lynn Welker, J.D. Hanes,<br>Marybelle Teters                      |
| Non-Glass Items .....                         | Carl Beynon   |
| Nominating .....                              | Rick Jones  |
| Program .....                                 | Bill Hagerty  |
| Projects .....                                | Bill Hagerty  |
| Publications .....                            | Mark A. Nye   |
| Publicity .....                               | Cynthia A. Arent  |
| Study Group Advisor .....                     | Marybelle Teters  |
| 2000 Convention .....                         | Mark A. Nye   |
| 2000 Auction .....                            | Squeek and Dorothy Rieker,<br>Tom and Noreen Kullman, Lynn Welker |
| 2000 Glass Show ....                          | Mary Beth Hackett, Joy McFadden                                   |
| 2000 Glass Dash .....                         | Bud Walker  |
| <i>Crystal Ball</i> Editor .....              | Lorraine Weinman  |
| <i>Crystal Ball</i> Circulation Directors ... | Lisa and Mike Neilson   |
| WebMaster .....                               | Linda Roberts   |

Internet website: [www.cambridgeglass.org](http://www.cambridgeglass.org)

**DUE TO FLOODING IN CAMBRIDGE, OHIO, THE NATIONAL CAMBRIDGE COLLECTORS' MUSEUM OF CAMBRIDGE GLASS AT 9931 EAST PIKE ROAD WILL NOT BE OPEN.**

**THE TEMPORARY NCC MUSEUM IS LOCATED IN PENNY COURT MALL IN DOWNTOWN CAMBRIDGE, OHIO.**

## ADVERTISING RATES

### Display Rates (camera ready ads preferred)

| <u>Unit</u> | <u>Members</u> | <u>Non-Members</u> |
|-------------|----------------|--------------------|
| Full Page   | \$45.00        | \$60.00            |
| 3/4 Page    | \$35.00        | \$50.00            |
| 1/2 Page    | \$25.00        | \$35.00            |
| 1/4 Page    | \$15.00        | \$25.00            |
| 1/8 Page    | \$10.00        | \$15.00            |

(\$5.00 additional if a photograph is included in display ad)

### Classified Rates

10 cents a word \$2.00 minimum

Abbreviations and initials count as words. Type sizes cannot be mixed in classified ads. **Payment in full must accompany all ad copy.** Contact Editor for copy assistance.

### Dealer Directory

Six Line Maximum \$24.00 for 12 month contract

Also included - Listing on our Internet site at:

[www.cambridgeglass.org](http://www.cambridgeglass.org)

Cambridge *Crystal Ball* assumes no responsibility for items advertised and will not be responsible for errors in price, description, or other information.

**Advertising copy, letters, articles, must be received by the 5th of preceding month to be considered for publication in the next issue.**

Please address all correspondence (include SASE) to:  
(or E-Mail [NCC\\_Crystal\\_Ball@compuserve.com](mailto:NCC_Crystal_Ball@compuserve.com))

**National Cambridge Collectors, Inc.  
P.O. Box 416  
Cambridge, OH 43725-0416**

|                           |   |
|---------------------------|---|
| President Tarzan Deel     | 540-869-3949  |
| Vice President Rick Jones | 914-631-1656  |
| Secretary Sharon Miller   | 740-685-6513  |
| Membership                | email: <a href="mailto:jaross@cambridgeoh.com">jaross@cambridgeoh.com</a> |
| NCC Museum: Phone         | 740-432-4245  |
| Fax                       | 740-439-9223  |

**Please notify us immediately of any address change.**

Opinions or information stated in any signed article or letter printed in the *Crystal Ball* are those of the author and may not agree with National Cambridge Collectors, Inc. The Editor reserves the right to refuse and to edit any material submitted for publication to conform to the editorial style of the *Crystal Ball*. Members are encouraged to write to NCC and the *Crystal Ball* sharing their knowledge and questions!

## President's Message

# *Convention Time is Almost Here*

The auction is over and it was a big success, the biggest auction we have ever had. As usual some items brought big dollars and other items should have brought more, but at an auction you never know what will happen. A great time was had by all who attended this year. Thanks to the auction committee and all of the volunteers who make it possible. There will be an auction report in this *Crystal Ball*.

We need to track all hours of those who donate their time to NCC. This is to produce "in kind" dollars for the grant process. All hours that are donated to NCC have an "in kind" dollar value. While these dollars are not tax deductible, they do count toward matching dollar values in the grant process. If you are donating time to NCC, please report these hours to us at the NCC P.O. box. Please include dates, hours, expenses (miles and other costs), and subject so we can fix a dollar value to the work. This came as a result of a presentation Lana Watkins made to the board on March 3 discussing the grant process. Thanks Lana.

Mark Nye informed the board that the Rosepoint price guide has been completed and will be available at the 2000 Convention. If you have not participated in such an effort, you have no idea how much work it is. Sample prices from across the country are taken by major collectors and then averaged. Geographic cost differences make the job very hard since scarcity by region will drive prices higher. Thanks to everyone who made this possible.

Mark also said that three of the major etchings books will be available by Convention. These are Blossom Time, Candlelight, and Chantilly. The books are done in the same format as the Rosepoint book and should be of interest to collectors of these etchings. Other books are Wildflower, Elaine, Diane, and Portia, which should come out later this year.

The red Scotty Dog bookends made their debut at the Auction. They were a big hit. Have you ordered yours yet?

The Nominating Committee has done a great job. We have a good slate and it will be covered in the *Crystal Ball* with pictures and biographies on all nominated individuals. Thanks to Rick Jones and his committee for a job well done.

It's springtime and a time for renewal. Check your

membership and make sure yours is renewed. There are changes coming in how we notify you about membership renewals. Jeff Ross has asked for these changes to help curb costs. You will be notified in your *Crystal Ball* a month before your renewal and the month of your renewal. You will be notified with a *Crystal Ball* for a one-month grace period after which your *Crystal Ball* will stop. If you renew and want the back issues of the *Crystal Ball* you will have to request them. Please help us in this effort and renew with your first notice.

We are keeping an eye on the costs of publishing the *Crystal Ball*. Paper cost increases last year had us publishing at a deficit. For the moment, we are absorbing the cost overrun, but when we start operating a museum again we will have to find a way to make up the cost.

We have been reviewing with Dennis Snyder (Budget and Finance Committee chairman) to determine where we stand financially in regard to a new museum. Please read the minutes of the March quarterly meeting for more information. Thanks Dennis for your time and patience.

As you are visiting the spring shows, keep NCC in mind for ideas you may have for fundraising and display space. Sometimes you may see something that will invoke or provoke an idea. We may or may not be able to use it but let's hear it. As usual, drop us a line at the NCC P.O. box.

As usual, I hope everyone is making an effort at signing up a new member this year. I believe that anyone can benefit from joining a group like ours and we can certainly learn from new people too.

Until May,

Tarzan

Have you visited the NCC website lately?

**Come See What's New**

[www.cambridgeglass.org](http://www.cambridgeglass.org)

*(AUCTION 2000 - Continued from page 1)*

Prior to the beginning of the auction, the Cordials Study Group held a fundraising raffle of a Willow Blue etched basket. The winners were NCC members Lynn and Martha Swearingen from Richland, Iowa.

During the day, 396 lots of Cambridge glassware were sold. A few of the rare or unusual items were: a #693/3000 Crystal 2-piece canape set decorated with golfer in green and gold trim - \$375; #2631 Near Cut electric lamp - \$1250; #2718 Carmen Near Cut berry cream footed pitcher - \$725; #100 Cascade blown goblet with sample room label - \$135; Light Emerald frog figurine - \$185; #1402/100 Tally Ho goblet with Marigold colored flashing and cutting - \$245; small Ivory hour-glass shaped perfume with stopper - \$1050; and a #244 Hunt Scene 10 1/2 inch dinner plate mint gold encrusted with Cobalt enamel on the back - \$1050.

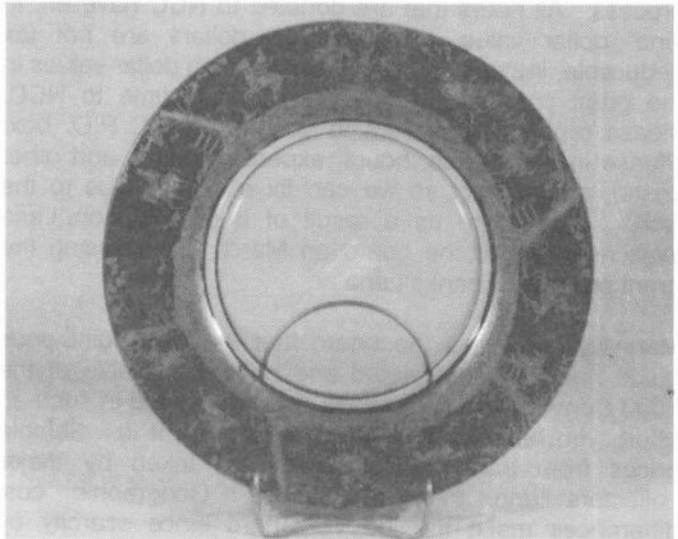
Cambridge swans are always a favorite. Some of the swans included this year were: a #1040 Crown Tuscan 3-inch Style III swan with gold decoration - \$(see #214); #1040 Carmen 3-inch Style III - \$130; and a #1042 Crystal 6 1/2-inch Style III - \$35.

The pair of NCC trial run Teal color Scottie Dogs sold for \$1200.

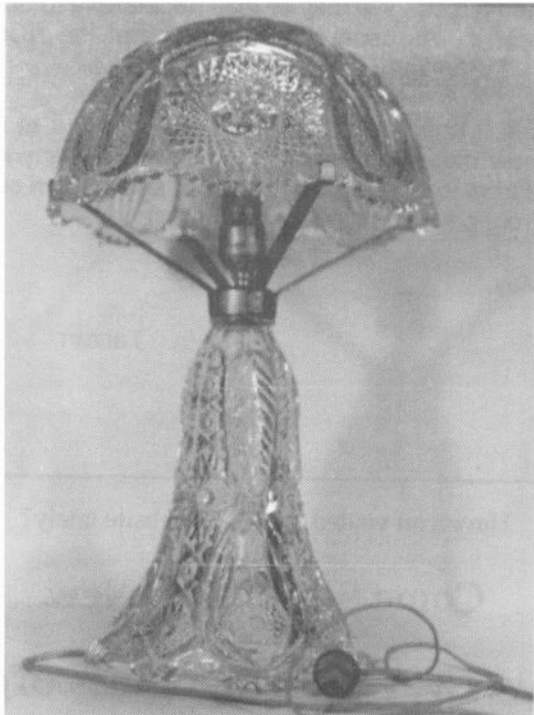
If you were unable to attend the auction, the annual convention and glass show & sale are just around the corner. Mark your calendar now and plan to attend this year's activities. Both events are located at the Pritchard Laughlin Civic Center in Cambridge, Ohio. We hope to see you in June!



The NCC Auction drew a large crowd anxious to bid



This #244 Hunt Scene dinner plate, mint gold encrusted with Cobalt enamel on the back, was one of the more desired pieces



Among the highest bid items was this 20" tall Near Cut electric lamp with a 12" diameter shade



Here (left to right) John Wolfe, Bud Walker, and Dennis Snyder discuss the beginning of the auction

## 2000 Benefit Auction Results - Prices Per Lot

|     |        |      |         |      |        |       |         |      |        |      |        |
|-----|--------|------|---------|------|--------|-------|---------|------|--------|------|--------|
| 1.  | 25.00  | 53.  | 5.00    | 105. | 75.00  | 157.  | 35.00   | 208. | 10.00  | 260. | 70.00  |
| 2.  | 15.00  | 54.  | 45.00   | 106. | 35.00  | 158.  | 60.00   | 209. | 30.00  | 261. | 15.00  |
| 3.  | 95.00  | 55.  | 45.00   | 107. | 40.00  | 159.  | 45.00   | 210. | 90.00  | 262. | 475.00 |
| 4.  | 15.00  | 56.  | 165.00  | 108. | 525.00 | 160.  | 185.00  | 211. | 45.00  | 263. | 24.00  |
| 5.  | 85.00  | 57.  | 20.00   | 109. | 155.00 | 161.  | 65.00   | 212. | 45.00  | 264. | 235.00 |
| 6.  | 20.00  | 58.  | 40.00   | 110. | 20.00  | 162.  | 45.00   | 213. | 65.00  | 265. | 25.00  |
| 7.  | 85.00  | 59.  | 30.00   | 111. | 35.00  | 163.  | 15.00   | 214. | 85.00  | 266. | 12.00  |
| 8.  | 15.00  | 60.  | 60.00   | 112. | 102.50 | 164.  | 245.00  | 215. | 45.00  | 267. | 100.00 |
| 9.  | 25.00  | 61.  | 85.00   | 113. | 15.00  | 165.  | 50.00   | 216. | 315.00 | 268. | 35.00  |
| 10. | 60.00  | 62.  | 45.00   | 114. | 35.00  | 166.  | 130.00  | 217. | 30.00  | 269. | 95.00  |
| 11. | 15.00  | 63.  | 15.00   | 115. | 40.00  | 167.  | 50.00   | 218. | 60.00  | 270. | 85.00  |
| 12. | 12.50  | 64.  | 85.00   | 116. | 25.00  | 168.  | 75.00   | 219. | 45.00  | 271. | 135.00 |
| 13. | 6.00   | 65.  | 37.50   | 117. | 190.00 | 169.  | 160.00  | 220. | 45.00  | 272. | 165.00 |
| 14. | 20.00  | 66.  | 17.50   | 118. | 300.00 | 170.  | 15.00   | 221. | 135.00 | 273. | 40.00  |
| 15. | 7.00   | 67.  | 75.00   | 119. | 40.00  | 171.  | 120.00  | 222. | 50.00  | 274. | 30.00  |
| 16. | 65.00  | 68.  | 30.00   | 120. | 185.00 | 172.  | 20.00   | 223. | 20.00  | 275. | 85.00  |
| 17. | 200.00 | 69.  | 40.00   | 121. | 250.00 | 173.  | 2.00    | 224. | 30.00  | 276. | 20.00  |
| 18. | 70.00  | 70.  | 1250.00 | 122. | 160.00 | 174.  | 22.50   | 225. | 20.00  | 277. | 75.00  |
| 19. | 110.00 | 71.  | 95.00   | 123. | 250.00 | 174A. | 1200.00 | 226. | 30.00  | 278. | 125.00 |
| 20. | 85.00  | 72.  | 25.00   | 124. | 25.00  | 175.  | 20.00   | 227. | 85.00  | 279. | 35.00  |
| 21. | 95.00  | 73.  | 725.00  | 125. | 130.00 | 176.  | 70.00   | 228. | 30.00  | 280. | 85.00  |
| 22. | 60.00  | 74.  | 25.00   | 126. | 65.00  | 177.  | 95.00   | 229. | 75.00  | 281. | 150.00 |
| 23. | 35.00  | 75.  | 120.00  | 127. | 110.00 | 178.  | 25.00   | 230. | 95.00  | 282. | 65.00  |
| 24. | 70.00  | 76.  | 50.00   | 128. | 65.00  | 179.  | 45.00   | 231. | 35.00  | 283. | 20.00  |
| 25. | 15.00  | 77.  | 9.00    | 129. | 75.00  | 180.  | 270.00  | 232. | 750.00 | 284. | 55.00  |
| 26. | 90.00  | 78.  | 205.00  | 130. | 125.00 | 181.  | 30.00   | 233. | 6.00   | 285. | 180.00 |
| 27. | 120.00 | 79.  | 70.00   | 131. | 105.00 | 182.  | 35.00   | 234. | 8.00   | 286. | 25.00  |
| 28. | 65.00  | 80.  | 130.00  | 132. | 270.00 | 183.  | 20.00   | 235. | 27.50  | 287. | 20.00  |
| 29. | 135.00 | 81.  | 50.00   | 133. | 25.00  | 184.  | 15.00   | 236. | 7.50   | 288. | 70.00  |
| 30. | 170.00 | 82.  | 50.00   | 134. | 45.00  | 185.  | 15.00   | 237. | 10.00  | 289. | 35.00  |
| 31. | 35.00  | 83.  | 70.00   | 135. | 55.00  | 186.  | 45.00   | 238. | 10.00  | 290. | 45.00  |
| 32. | 175.00 | 84.  | 300.00  | 136. | 35.00  | 187.  | 105.00  | 239. | 25.00  | 291. | 130.00 |
| 33. | 75.00  | 85.  | 75.00   | 137. | 80.00  | 188.  | 40.00   | 240. | 20.00  | 292. | 10.00  |
| 34. | 30.00  | 86.  | 40.00   | 138. | 290.00 | 189.  | 65.00   | 241. | 62.50  | 293. | 75.00  |
| 35. | 30.00  | 87.  | 65.00   | 139. | 135.00 | 190.  | 150.00  | 242. | 40.00  | 294. | 185.00 |
| 36. | 40.00  | 88.  | 50.00   | 140. | 30.00  | 191.  | 45.00   | 243. | 270.00 | 295. | 20.00  |
| 37. | 40.00  | 89.  | 90.00   | 141. | 35.00  | 192.  | 50.00   | 244. | 300.00 | 296. | 175.00 |
| 38. | 60.00  | 90.  | 250.00  | 142. | 55.00  | 193.  | 315.00  | 245. | 65.00  | 297. | 60.00  |
| 39. | 100.00 | 91.  | 25.00   | 143. | 115.00 | 194.  | 42.50   | 246. | 45.00  | 298. | 45.00  |
| 40. | 16.00  | 92.  | 45.00   | 144. | 200.00 | 195.  | 20.00   | 247. | 125.00 | 299. | 5.00   |
| 41. | 225.00 | 93.  | 95.00   | 145. | 35.00  | 196.  | 17.50   | 248. | 37.50  | 300. | 55.00  |
| 42. | 375.00 | 94.  | 65.00   | 146. | 50.00  | 197.  | 12.50   | 249. | 20.00  | 301. | 55.00  |
| 43. | 45.00  | 95.  | 44.00   | 147. | 100.00 | 198.  | 25.00   | 250. | 45.00  | 302. | 45.00  |
| 44. | 30.00  | 96.  | 25.00   | 148. | 15.00  | 199.  | 45.00   | 251. | 35.00  | 303. | 20.00  |
| 45. | 40.00  | 97.  | 40.00   | 149. | 70.00  | 200.  | 1050.00 | 252. | 25.00  | 304. | 160.00 |
| 46. | 215.00 | 98.  | 40.00   | 150. | 245.00 | 201.  | 40.00   | 253. | 55.00  | 305. | 7.50   |
| 47. | 72.50  | 99.  | 60.00   | 151. | 75.00  | 202.  | 10.00   | 254. | 135.00 | 306. | 55.00  |
| 48. | 145.00 | 100. | 40.00   | 152. | 50.00  | 203.  | 85.00   | 255. | 65.00  | 307. | 150.00 |
| 49. | 35.00  | 101. | 80.00   | 153. | 50.00  | 204.  | 65.00   | 256. | 85.00  | 308. | 80.00  |
| 50. | 30.00  | 102. | 45.00   | 154. | 10.00  | 205.  | 25.00   | 257. | 95.00  | 309. | 270.00 |
| 51. | 40.00  | 103. | 55.00   | 155. | 120.00 | 206.  | 7.00    | 258. | 135.00 | 310. | 500.00 |
| 52. | 12.50  | 104. | 140.00  | 156. | 375.00 | 207.  | 1050.00 | 259. | 25.00  | 311. | 500.00 |

(Continued on page 6)

# 2000 Convention Update

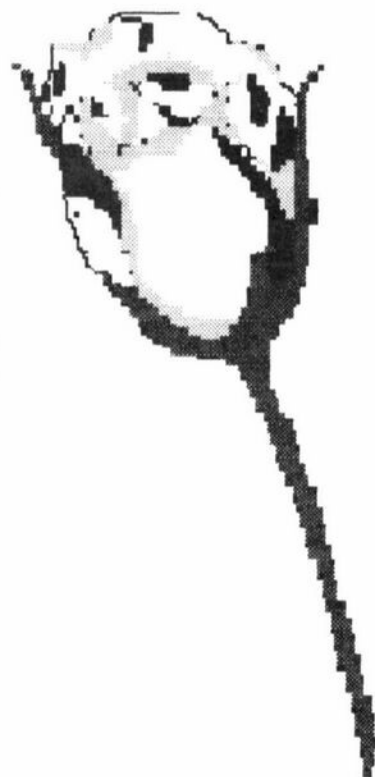
by Mark Nye, Convention Chairman

As announced in the March issue, the 2000 banquet speaker will be Gay LeCleire Taylor. Ms. Taylor is the curator at the Museum of American Glass at Wheaton Village, New Jersey. The topic of Ms. Taylor's talk will be glass manufacturing in the 19th, 20th, and 21st centuries. More on Ms. Taylor in the May issue.

A secondary theme has been added to this year's convention... Cambridge Roses. June is rose month and what would be more appropriate than to feature Cambridge Roses at our convention. A program covering the various Cambridge etchings, cuttings, and decorations that feature roses will be presented on Friday.

The convention registration form will appear in next month's *Crystal Ball*, the May issue. If you are planning on attending the 2000 convention, it must be returned by the date on the form.

Don't forget to select a goblet to bring and use at the banquet. Also, donations for the mini-auction are always appreciated.



(RESULTS—continued from page 5)

## 2000 Benefit Auction Results Continued- Prices Per Lot

|      |        |      |        |      |        |      |        |      |        |      |        |
|------|--------|------|--------|------|--------|------|--------|------|--------|------|--------|
| 312. | 220.00 | 326. | 25.00  | 340. | 60.00  | 354. | 40.00  | 368. | 15.00  | 382. | 800.00 |
| 313. | 7.00   | 327. | 180.00 | 341. | 50.00  | 355. | 70.00  | 369. | 35.00  | 383. | 45.00  |
| 314. | 12.50  | 328. | 35.00  | 342. | 30.00  | 356. | 4.00   | 370. | 25.00  | 384. | 55.00  |
| 315. | 25.00  | 329. | 40.00  | 343. | 35.00  | 357. | 12.50  | 371. | 50.00  | 385. | 40.00  |
| 316. | 145.00 | 330. | 30.00  | 344. | 30.00  | 358. | 25.00  | 372. | 10.00  | 386. | 45.00  |
| 317. | 60.00  | 331. | 90.00  | 345. | 125.00 | 359. | 20.00  | 373. | 60.00  | 387. | 120.00 |
| 318. | 80.00  | 332. | 70.00  | 346. | 5.00   | 360. | 45.00  | 374. | 140.00 | 388. | 50.00  |
| 319. | 140.00 | 333. | 55.00  | 347. | 10.00  | 361. | 155.00 | 375. | 25.00  | 389. | 95.00  |
| 320. | 40.00  | 334. | 25.00  | 348. | 25.00  | 362. | 85.00  | 376. | 40.00  | 390. | 170.00 |
| 321. | 25.00  | 335. | 45.00  | 349. | 35.00  | 363. | 17.50  | 377. | 45.00  | 391. | 115.00 |
| 322. | 65.00  | 336. | 80.00  | 350. | 65.00  | 364. | 87.50  | 378. | 30.00  | 392. | 270.00 |
| 323. | 60.00  | 337. | 65.00  | 351. | 30.00  | 365. | 30.00  | 379. | 60.00  | 393. | 320.00 |
| 324. | 65.00  | 338. | 18.00  | 352. | 20.00  | 366. | 55.00  | 380. | 65.00  | 394. | 50.00  |
| 325. | 35.00  | 339. | 55.00  | 353. | 20.00  | 367. | 25.00  | 381. | 80.00  | 395. | 50.00  |
|      |        |      |        |      |        |      |        |      |        | 396. | 45.00  |

**NATIONAL CAMBRIDGE COLLECTORS, INC.**  
**27th ANNUAL CONVENTION - JUNE 2000**  
**TENTATIVE EVENT SCHEDULE**

**WEDNESDAY, JUNE 21**

6:00 p.m. Dutch Treat Dinner Site to be announced

**THURSDAY, JUNE 22**

9:00 a.m. Registration Desk Opens Pritchard Laughlin Civic Center  
 10:00 a.m. Smith Auction (Not sponsored by NCC) Pritchard Laughlin Civic Center Galleria  
 4:00 p.m. Orientation Session - First Timers Conference Room - Pritchard Laughlin Civic Center  
 7:00 p.m. Get Acquainted Picnic (full picnic meal served) Cash Bar Pool Side - Best Western Motel

**FRIDAY, JUNE 23**

8:00 a.m. Continental Breakfast Pool Side Best Western Motel  
 8:30 a.m. Local Glass Factory Tours Boyd and Mosser Factories  
 9:00 a.m. Registration Desk Opens Pritchard Laughlin Civic Center  
 1:00 p.m. Program - Evolution of Cambridge Glass Conference Room - Pritchard Laughlin Civic Center  
 1:30 p.m. Program - Cambridge Roses Conference Room - Pritchard Laughlin Civic Center  
 4:30 p.m. Glass Show Opens Exhibit Hall - Pritchard Laughlin Civic Center  
 7:30 p.m. Convention Chairman's Reception - Cash Bar Galleria - Pritchard Laughlin Civic Center  
 8:00 p.m. Friday Night Supper Galleria - Pritchard Laughlin Civic Center  
 9:00 p.m. Mini-Auction Galleria - Pritchard Laughlin Civic Center  
 TF Pool Side Party (BYOB) Budget Host Deer Creek Motel

**SATURDAY, JUNE 24**

7:00 a.m. Glass Dash Opens Beech Grove Family Development Center  
 11:00 a.m. Glass Show Opens Exhibit Hall - Pritchard Laughlin Civic Center  
 1:00 p.m. Buying Glass-21st Century Style Conference Room - Pritchard Laughlin Civic Center  
 3:00 p.m. Glass Identification - Lynn Welker Conference Room - Pritchard Laughlin Civic Center  
 4:00 p.m. Bring & Brag - Lynn Welker Conference Room - Pritchard Laughlin Civic Center  
 6:30 p.m. President's Reception - Cash Bar Galleria - Pritchard Laughlin Civic Center  
 7:00 p.m. Annual Banquet Galleria - Pritchard Laughlin Civic Center  
 TF Speaker - Gay LeCleire Taylor Theater - Pritchard Laughlin Civic Center  
 TF Pool Side Party (BYOB) Budget Host Deer Creek Motel

**SUNDAY, JUNE 25**

8:30 a.m. Buffet Breakfast Galleria - Pritchard Laughlin Civic Center  
 9:30 a.m. 27th Annual Meeting NCC, Inc. Galleria - Pritchard Laughlin Civic Center  
 11:00 a.m. Glass Show Opens Exhibit Hall - Pritchard Laughlin Civic Center  
 1:30 p.m. Cambridge Glass Co. Workers Reunion Pritchard Laughlin Civic Center

# 2000 NCC CONVENTION MOTEL INFORMATION

The following motels are all located in Cambridge at Exit 178, Ohio Route 209, off of Interstate 70:

## **AMERIHOST CAMBRIDGE**

State Route 209 South  
740-439-1505  
Reservations 800-434-5800  
\$62 single or double (includes continental breakfast)

## **BEST WESTERN CAMBRIDGE**

1945 Southgate Parkway  
740-439-3581  
No extra for children  
One week cancellation notice  
Approximately 50 rooms available  
\$55 single or double

## **BUDGET HOST DEER CREEK MOTEL**

2325 Southgate Parkway  
740-432-6391  
Reservations 800-637-2917  
24 hours cancellation notice  
Approximately 50 rooms available  
\$45.95 single / \$52.95 double

## **COMFORT INN**

2327 Southgate Parkway  
740-435-3200  
\$55 single or double

## **DAYS INN CAMBRIDGE**

2328 Southgate Parkway  
740-432-5691  
\$63 (subject to availability)

## **HOLIDAY INN CAMBRIDGE**

2248 Southgate Parkway  
740-432-7313  
One week cancellation notice  
Approximately 20 rooms available  
\$65 (includes breakfast)

## **TRAVELODGE OF CAMBRIDGE**

State Route 209 North  
740-432-7375  
One week cancellation notice  
Approximately 15 rooms available  
Call for rates

...and west of Cambridge in nearby New Concord:

## **BOGART'S BED & BREAKFAST**

62 West Main Street  
New Concord, OH  
740-826-7439 or 740-872-3514  
Call for rates

To obtain the quoted rate at any of the motels, you must specify you are attending the NCC, Inc. Convention. (Most places recognize "Cambridge Glass Convention" more than they do "NCC.") It is strongly recommended that NCC members and friends attending the 2000 Convention book their reservations as soon as possible. In every instance there are only a certain number of rooms available at the stated group rate. When these are booked, you may have to pay a higher rate.

*Plan now to attend NCC Convention 2000  
Make your reservations early!*



# Cambridge Glass of the Roaring '20s

by John Corl



Once again, the Elegant Glass Collectors study group will be setting up a display of Cambridge glass at the Eastern National Antiques Show and Sale in Harrisburg, Pennsylvania. The dates for the spring show are April 28, 29, and 30. This will be the fifth time we have been invited by Mr. Jim Chambers, the show's organizer, to do so.

In keeping with the tradition, we have chosen the theme of "Cambridge Glass in the Roaring '20s" to build our exhibit of the glassware around, since the opaque colors of Cambridge were so successful for the company during this decade of American life. They also blend beautifully with this time of the year, spring. I'm sure the beautiful pastel opaque colors of Primrose, Helio, Azurite, Ivory, Jade, Carrara, and Avocado will attract many admirers from the show's attendees.

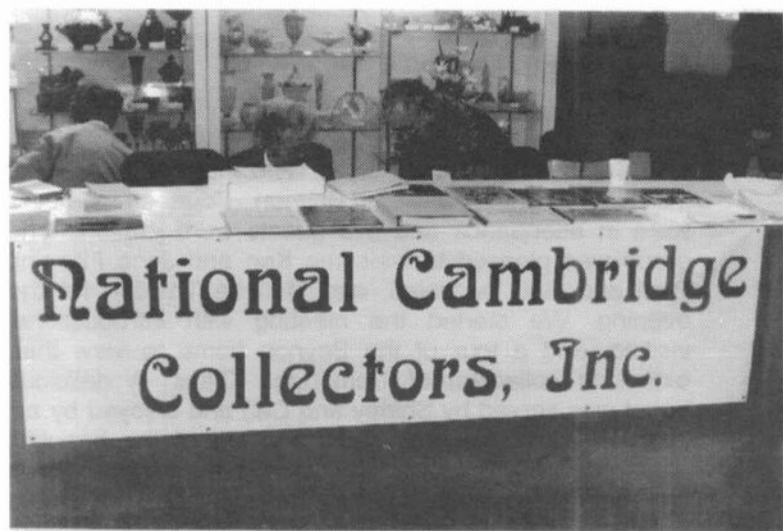
We also plan to have several additional displays of interest for collectors. We plan to display Ebony, another opaque of the 1920s, and have a display of Caprice, a very popular line for Cambridge since its introduction in 1936. We will have a display of Farber Bros. Pieces, a very successful "marriage" between that company with its beautiful chrome- and gold-colored holders, and the Cambridge Glass Company, with its many beautiful colors of glass that were used in these holders.

There will be something for everyone to see and admire, I assure you. We will have all the NCC books and publications for sale, and of course, the Scottie dog bookends will be available for purchase to help our ongoing effort to build a new museum.

Again, the dates for the spring show in Harrisburg are April 28, 29, and 30. The show is open from 10 a.m. until 6 p.m. April 28 and 29, and 11 a.m. to 5 p.m. April 30. It is held in the main exhibition hall of the Pennsylvania State Farm Show complex off of Route 81 in Harrisburg, PA.

All the members of the Elegant Glass Collectors study group are looking forward to seeing all our friends again, and of course, are anxious to make and meet new friends. All are invited to stop by and ask questions, look over the display, buy books and Scottie dogs, and of course, TALK and exchange stories about the fun and joys of collecting the beautiful glass manufactured by the Cambridge Glass Company.

Hope to see many of you there!



Past Display at Harrisburg Show and Sale  
and NCC Display Area

# NATIONAL STUDY GROUP REPORTS



## **Study Group #13 The Miami Valley (Ohio) Study Club**

The March meeting of the Miami Valley (Ohio) Study Club was called to order on March 14 at 7:00 p.m. by President George Stamper. Nineteen members were present. After a brief business meeting, we proceeded to Show and Tell. Among items brought were: #3778 Cordial, cut Larchmont; #1957 Sonata Smoke Decanter; Nearcut #2760 Daisy/Archfoot Tumblers; Nearcut #2631 Marjorie Berry Sugar; #1114 6" Bashful Charlotte, Style 3 Base; Large Dog Bottle; #3500 Carmen Low Sherbet; #16 Everglades 12" Console Bowl; 10" P427 Bowl, etched RosePoint on pierced Wallace Sterling RosePoint Foot; #3500/97 14" Oval Relish, etched RosePoint; #1307 3-lite candelabrum; #4 Moonlight Blue Caprice Claret; #71 Moonlight Blue Caprice Candlestick; Caprice Lamp; #3400 Forest Green Bowl with White Enamelled Diane Etch. The Program for the evening was on "Avocado", led by Mac and Georgia Otten. Members brought their pieces of Avocado to create an impressive display. Georgia, in her Martha Stewart mode, illustrated how pieces of Avocado can be used adventurously as accent pieces with other patterns and colors of Cambridge, such as: Avocado and Royal Blue; Avocado and Crown Tuscan (including pieces with Charleton decoration); Avocado with Decalware and frosted items; Avocado and Helio; Avocado and Pistachio. The door prize was won by Judy Rhoads. It was a ripe avocado, a ripe pear (a near match for the avocado color), and a recipe for Spinach Salad with Pear and Avocado. Coming meetings: April 11 - Ivy Ball Vases May 9, 6:00 p.m. - Caprice Submitted by Judy Rhoads Secretary

## **Study Group #14 The Cambridge Cordials**

On Saturday, December 18, 1999, the Cambridge Cordials study group had their annual Christmas meeting at the home of Mike and Cindy Arent. Members present were: Carl and Shirley Beynon, Mike and Lisa Neilson, Mike and Cindy Arent, Joe and Sharon Miller, Mary Welker, Lynn Welker, Kathy Chester, Jeff and Jill Ross, Judy Momirov, Rich Bennett, and Lorraine Weinman. Guests were: Lindy Thaxton and Mark Votaw.

A short meeting was held to discuss new and old business. The treasurers' report was given. Lynn Welker

reported on the progress of the T-shirt sales. It was also decided that a raffle would be held at the NCC auction. Other fundraising efforts were discussed.

At this point, Santa made his appearance and began the gift exchange. Among the glass gifts were: a Caprice footed plate with silver overlay; a covered cigarette box with gold Wood Lily; a Cambridge urinal; silver overlay salt and pepper shakers, cream and sugar; a RosePoint gadroon 3-part divided candy; an Amber gyro optic vase; a cut Bexley cream and sugar; an Amber narrow optic shot glass w/gold etching; a small Crown Tuscan swan in a basket; and an Emerald Green decorated shell and Amethyst pencil dog.

After a great Christmas spread of food and delights, more glass was discussed in a show & tell session. Some items shown were: a pressed Mardi Gras 4-inch shell; a Tally Ho pretzel jar, gold silk screen; an Ivory cylinder vase with gold Classic on it w/blue enamel trim; a Pamona "spittoon" vase; a large Carmen Japonica vase, signed; an Ivory blown bowl w/enamel basket of flowers; an Amber 3-part box w/gold Portia on top and bottom; and Milk Glass Pouter Pigeons.

Next meeting is scheduled for February 19, 2000, at the home of Shirley and Carl Beynon.

## **Study Group #14 The Cambridge Cordials**

The Cambridge Cordials Study Club met February 19 at the home of Shirley and Carl Beynon. Fourteen members were in attendance and five guests were present. The group was pleased to welcome Ken and Jane Filippini, Paul and Gail Duchamp, and Melinda Thaxton for the evening. We started the meeting with introductions, visiting, and a tour of the Beynon home to view their extensive collection of Cambridge Glass. A delicious buffet was served by Shirley and Carl and enjoyed by all. Lynn Welker conducted show and tell of the beautiful glassware displayed at the meeting by various group members. He identified a Yale humidor with blue trim; a Peachblo water pitcher etched Gloria and gold encrusted; an Azurite bowl with NanKing Green enamel; an Ivory flip bowl complete with an Ivory Rose Lady unusually decorated with gold trim, enamel painted flowers, and a silver band trim. Also showcased was an Ebony frog

## Early Cuttings

In the July 1999 issue, several pages from a 1913 Cambridge catalog were reproduced. These pages illustrated a number of early Cambridge cuttings, many of which are seldom seen today and without the catalog pages, virtually impossible to attribute to Cambridge. This month pages from Catalog No. 10, dating to circa 1920, are reprinted. Again, these pages show cuttings and while some of the blanks might be considered as possible Cambridge shapes, the cuttings are unfamiliar to most collectors. These cuttings are rarely seen today, possibly because they are not recognized as being Cambridge and are passed over at estate sales, flea markets, etc. It is also highly likely that original production quantities are a major factor in what survives today. Throughout the history of Cambridge cuttings were always produced in less volume than etchings, simply because they are labor intensive and time consuming to produce. Happy hunting.

(These reprints follow on pages 12 through 16)

Faith that the thing can be done is essential  
to any great achievement.

— Thomas N. Carruther



*(STUDY GROUPS—Continued from page 10)*

vase, a nude compote with gold etched Minerva decoration, a 3035 Heatherbloom cordial etched Gloria, a nude Chintz claret, a Heatherbloom ball jug cruet, and an Ivory compote with a gold cornucopia decoration with enameled flowers. Lynn Welker presided over the meeting in the absence of Lorraine Weinman. It was announced that the Miami Valley Study Group is extending an invitation to all to attend their upcoming meeting on Tuesday, May 9, at 6:00 p.m. A program on Caprice will be presented. Mike Arent gave an updated treasurer's report to the group. Cindy Arent made show cards and posters available for anyone who was available to help with dispersal for advertising convention. Details were finalized for the upcoming raffle fundraiser. Members discussed the list for the NCC auction on March 4. Lynn discussed the upcoming Roadshow to be held at Penny Court Antique Mall in downtown Cambridge in late October. He informed the club that the first Road show held at the Glass House was successful. Cordial members were asked to update an address and email list which will be dispersed at the next meeting on April 15, 2000. Members and guests worked together on a project set up by Carl Beynon to prepare the Scottie Dog tags for the new NCC Scottie Dogs. At the close of the meeting, members were reminded that the April meeting would be held at the home of Mike and Lisa Neilson, and the May meeting will be at the home of Sharon and Joe Miller.

—submitted by Judy Momirov, secretary

## NCC Golfers



If you are attending this year's convention and plan to arrive early in the week, you might want to bring your clubs and get in a round of golf before the convention officially begins. I will be happy to arrange tee times and fill out foursomes for anyone interested. For more details, please send an e-mail to [Tuscan@clover.net](mailto:Tuscan@clover.net) or call 740-439-4582. See you at convention.

Mike Arent



No. 7858. 10 oz.  
Goblet



No. 7858. 6 oz.  
Tall Ftdl  
Sherbet



No. 7858. 6 oz.  
Fruit Salad



No. 8858. 12 oz.  
Tumbler



No. 8858. 9 oz.  
Table Tumbler



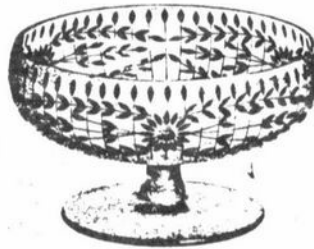
No. 8858. 5 oz.  
Tumbler



No. 4004. 5 in.  
Comport



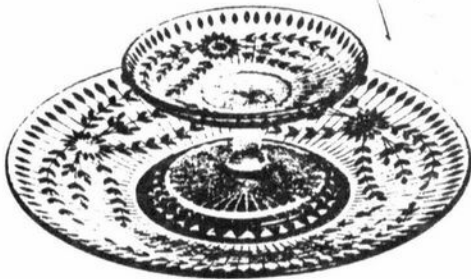
No. 2090. 5 in.  
Jelly Comport



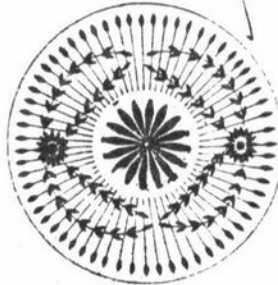
No. 5000. 7 in.  
Footed Nappy



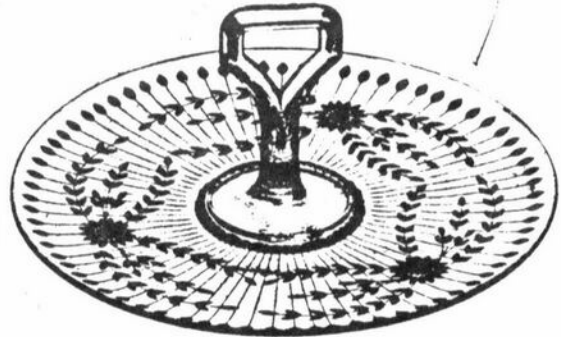
No. 2045. 8 in.  
Footed Nappy



No. 1917/105. 10 in.  
Cheese and Cracker



No. 1917/330. 6 in.  
Plate



No. 1917/361. 10 in.  
Sandwich Tray



No. 106. 66 oz.  
Jug and Cover



No. 106. 8 oz.  
Syrup and Cover



No. 106. 30 oz.  
Jug and Cover



No. 91. 3 Pint Jug



No. 7516. 10 oz.  
Goblet



No. 7516. 5 oz.  
Tall Footed Sherbet



No. 7516. 5 oz.  
Low Footed Sherbet



No. 8858. 12 oz.  
Tumbler



No. 8858. 9 oz.  
Table Tumbler



No. 8858. 5 oz.  
Tumbler



No. 4004. 5 in.  
Comport



No. 2090. 5 in.  
Jelly Comport



No. 5000. 7 in.  
Footed Nappy



No. 2045. 8 in.  
Footed Nappy



No. 152.  
Marmalade  
and Cover



No. 106. 8 oz.  
Syrup and Cover



No. 0214. 7 oz.  
Oil



No. 1917/8  
Butter Tub  
and Cover



No. 1917/10. Sugar & Cream



No. 105. 53 oz.  
Jug.



No. 106. 66 oz.  
Jug and Cover



No. 1917/330. 6 in.  
Plate



No. 106. 30 oz.  
Jug and Cover



No. 7516. 9 oz.  
Goblet



No. 7516. 5 oz.  
Tall Footed  
Sherbet



No. 7516. 5 oz.  
Low Footed  
Sherbet



No. 8858. 12 oz  
Tumbler



No. 8858. 9 oz.  
Table Tumbler



No. 9415. 9 oz.  
Table Tumbler



No. 147  
Marmalade  
and Cover



No. 4004. 6 in.  
Comport



No. 5000. 6 in.  
Footed Nappy



No. 2206  
3 Piece Mayonnaise Set



No. 1917/361. 10 inch  
Sandwich Tray



No. 20  
Fish Globe



No. 50  
Fish Globe



No. 110. 4 Pint  
Jug



No. 107. 66 oz.  
Jug and Cover





No. 4002 20 oz. Night Bottle and Tumbler

No. 1917/87 1 lb. Candy Jar

No. 1917/113 5 1/4 in. Comport

No. 1917/58 8 in. Footed Nappy

No. 1917/115 5 in. Comport

No. 111 3 1/2 Pint Jug



No. 106. 8 oz. Syrup and Cover

No. 1917/102 Marmalade and Cover

No. 1917/296 Oil

No. 200/6. 7 1/4 in. Candlestick

No. 200/24 7 in. Candlestick

No. 2357 8 in. Vase

No. 1917/384 Syrup and Cover



No. 1917/255 Mayonnaise Bowl and Ladle

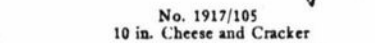
No. 1917/20 Sugar

No. 1917/16 Sugar

No. 1917/8 Butter Tub and Cover

No. 1917/20 Cream

No. 1917/16 Cream



No. 1917/105 10 in. Cheese and Cracker



No. 1917/29 Ash Tray



No. 1917/34 6 in. Baked Apple



No. 1917/284 6 in. Hld. Nappy



No. 1917/285 6 in. 2 Hld. Nappy



No. 1917/287 6 in. 3 Footed Nappy



No. 695. 5 oz. Footed Sherbet



No. 1917/361 10 in. Sandwich Tray



No. 1917/239. 8 in. Lily Bowl



No. 1917/268 7 and 8 in. Nappy



No. 1917/99 10 1/2 in. Celery Tray



No. 8858 9 oz. Table Tumbler



CUT AND COPPER WHEEL ENGRAVED  
STEMWARE AND TUMBLERS.

4074 CUTTING



No. 3020. 10 oz.  
Goblet



No. 3020. 6 oz.  
Tall Footed  
Sherbet



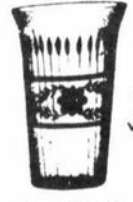
No. 3020. 6 1/2 oz.  
Low Footed  
Sherbet



No. 1630. 12 oz.  
Tumbler



No. 1630. 8 oz.  
Tumbler



No. 1630. 5 oz.  
Tumbler

4080 CUTTING



No. 7516. 10 oz. Goblet



No. 7516. 5 oz.  
Tall Footed Sherbet



No. 7516. 5 oz.  
Low Footed Sherbet



No. 8858. 12 oz.  
Tumbler



No. 8858. 9 oz.  
Table Tumbler



No. 8858. 5 oz.  
Tumbler

5000 COPPER WHEEL ENGRAVING



No. 7516. 10 oz. Goblet



No. 7516. 5 oz.  
Tall Footed  
Sherbet



No. 7516. 5 oz.  
Low Footed  
Sherbet



No. 1630. 12 oz.  
Tumbler



No. 1917. 4 1/2 oz.  
Tumbler Set



No. 1630. 5 oz.  
Tumbler

2097 CUTTING



No. 7516. 10 oz. Goblet



No. 7516. 5 oz.  
Tall Footed Sherbet



No. 7516. 5 oz.  
Low Footed Sherbet



No. 8858. 12 oz.  
Tumbler



No. 8858. 9 oz.  
Table Tumbler



No. 8858. 9 oz.  
Table Tumbler

4097 CUTTING



No. 7516. 10 oz.  
Goblet



No. 7516. 5 oz.  
Tall Footed Sherbet



No. 7516. 5 oz.  
Low Footed Sherbet



No. 8858. 12 oz.  
Tumbler



No. 8858. 9 oz.  
Table Tumbler



No. 8858. 5 oz.  
Tumbler







**NEW**

Now you can order a pair of Ruby (Red) Scotties!

The price is the same as the blue scotties.

You will have a pair (or more) of wonderful Ruby Scotties AND help with the NCC museum.

**ORDER NOW!**

**WON'T YOU HELP?**

The Ohio flood of 1998 destroyed the National Cambridge Collectors' Museum. Due to our great loss we are offering the public an opportunity to help by purchasing a special edition of Scottie Dog bookends. These Scotties will be made from the original Cambridge Glass mold in a "Ruby" (Red) color, and will be clearly marked with the N.C.C. name, date of 2000 and Mosser logo. This color will be limited to production during the year 2000. The cost will be \$100 per pair. Shipping charge is \$10 per pair. If you are an Ohio resident, you will be subject to 6 1/2% sales tax (\$6.50 per set)

THANKS!!!!

Order blank

Name: (please print) \_\_\_\_\_

Address: \_\_\_\_\_ Phone \_\_\_\_\_  
(UPS requires a street address) (Required if you give a P.O. Box)

City: \_\_\_\_\_ State: \_\_\_\_\_ Zip Code \_\_\_\_\_

|                                |       |   |          |          |                   |                  |
|--------------------------------|-------|---|----------|----------|-------------------|------------------|
| No. of pair FROSTED (Blue)     | _____ | X | \$100.00 | =        | \$ _____          |                  |
| No. of pair NON-FROSTED (Blue) | _____ | X | \$100.00 | =        | \$ _____          | Check # \$ _____ |
| No. of pair NON-FROSTED (Ruby) | _____ | X | \$100.00 | =        | \$ _____          |                  |
| Shipping - \$10.00 per pair    | _____ | X | \$10.00  | =        | \$ _____          | Amount \$ _____  |
| Sales tax (if Ohio Resident)   |       |   | \$ _____ |          | (\$6.50 per pair) | Date _____       |
| Total of order                 |       |   | =        | \$ _____ |                   |                  |

Make checks payable to: N.C.C., Inc.

Mail to: National Cambridge Collectors, Inc.  
**P. O. Box 416**  
**Cambridge, OH 43725-0416**

P.S. Those of you who are dealers and are buying the above Scotties for resale, and will not be paying the State of Ohio Tax, will have to sign a tax exempt form for such and all lines must be filled out completely to be exempt from paying the State of Ohio Sales Tax.

The undersigned hereby claims exemption to purchase of tangible personal property from the National Cambridge Collectors, Inc. on and after February 5, 1999 and certifies that this claim is based upon the purchaser's proposed use of the items purchased, the activity of the purchaser, or both as shown hereon: (Exemption Number from Rule #93.

|                                 |                                     |
|---------------------------------|-------------------------------------|
| -----<br>(Purchaser's Name)     | -----<br>(Purchaser's Address)      |
| -----<br>(Purchaser's Activity) | -----<br>(By - Signature and Title) |
| -----<br>(Date Signed)          | -----<br>(Vendor's License Number)  |

# ~ GLASS ~ MARKETPLACE

## Classifieds

**FOR SALE:** Assorted Cambridge Crystal and Candelabra, big footed bowls, plates, vases, candy dishes. **Helen Lenhart, 1531 Zener St., Pocatello, ID 83201.** Phone 208-237-0639.

**WANTED:** Pink Cambridge Etching #703, Florentine. **Linda Kaiser, 158 Pointe Vintage Drive, Rochester, NY 14626-1759,** e-mail [VKaiser1@rochester.rr.com](mailto:VKaiser1@rochester.rr.com), 716-227-2991.

### **WE CLEAN CLOUDY GLASS! SATISFACTION GUARANTEED**

*Yes, it is true that we really can restore the interior of your cruet, vase, decanter and other internally etched items back to near original condition.*

*We do not oil, wax or cover up the sickness in any way! We actually remove it.*

*No items are too sick to clean! If we cannot clean an item to meet your satisfaction, the cleaning is FREE!*

*Send no money up front. When we return your item a bill will be enclosed for the postage and cleaning. If you are not satisfied, only the return postage is requested.*

Most items clean in 7-8 weeks. All glass is handled and cleaned at your risk. Some very cloudy items may take several additional weeks.

|                 |              |                            |              |
|-----------------|--------------|----------------------------|--------------|
| Cocktail Shaker | \$35-\$40.00 | Salt Shaker (1)            | \$25.00      |
| Cologne         | \$27.50      | Salt Shaker (2)            | \$42.50      |
| Cruet           | \$27.50      | Vases (under 10")          | \$30-\$35.00 |
| Decanter        | \$35-\$45.00 | Vinegar & Oil Water Bottle | \$30.00      |
| Lavendar Jar    | \$25-\$35.00 |                            | \$35-\$40.00 |

Ship to: Kim Carlisle & Associates  
28220 Lamong Road, Dept. C  
Sheridan, IN 46069  
(317) 758-5767

Have you visited our website lately?

Come see the changes!

**There's often something new...**

<http://www.cambridgeglass.org>

## **Bogart's Bed & Breakfast**

62 W. Main Street, New Concord  
New Concord lodging in 1830 Federal  
Style home, decorated with  
antiques throughout.



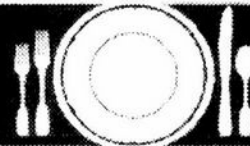
### **Bogart's Antiques**

7527 E. Pike, Norwich, OH  
Quality Antiques Bought & Sold

OWNERS: Jack & Sharon Bogart

740-826-7439 or 740-872-3514

[www.bedandbreakfastohio.com](http://www.bedandbreakfastohio.com) Reservations by phone



## **Stems Without Thorns**

As the world's largest supplier of old & new china, crystal, silver and collectibles, Replacements Ltd. has more than 700 different patterns of Cambridge crystal.

And however much we enjoy selling pieces that were once thought irreplaceable, we love buying them as well. Thanks to people like you, our crystal inventory currently numbers in the hundreds of thousands, and the numbers keep growing every year.

So, if you've been unsuccessfully searching for that elusive piece of Cambridge — or any other type of fine crystal — call us for a free list of pieces available in your pattern. And, if you're looking to sell pieces you currently have, we can help you there, too.

**REPLACEMENTS, LTD.**  
China, Crystal & Silver • Old & New

**1-800-REPLACE**  
(1-800-737-5223)

1089 Knox Road,  
PO Box 26029, Dept. CB,  
Greensboro, NC 27420  
[www.replacements.com](http://www.replacements.com)

## DEALERS



## DIRECTORY

NOTE: When writing to the dealers listed here, please enclose a SASE!

|  |   |  |
|--|---|--|
| <p><b>DAUGHERTY'S ANTIQUES</b><br/>Jerry and Shirley</p> <p>Antiques and Collectibles * Mostly Glass</p> <p>Shows &amp; Mail Orders 2515 Cheshire No.<br/>402-423-7426 Evenings Lincoln NE</p>   | <p><b>YOU CAN ADVERTISE YOUR ANTIQUE SHOP HERE!</b></p>   | <p><b>THE JONES GROUP</b><br/>Cindy Jones<br/>Buy and Sell Cambridge Glass<br/>650 Riverside Drive<br/>Sleepy Hollow, NY 10591<br/>914-631-1656 or E-Mail Caprice0@aol.com</p>   |
| <p><b>Milbra's Crystal</b> Buy &amp; Sell<br/>Replacement and Matching Specializing in:<br/>Cambridge<br/>Milbra Long (817) 645-6066 Fostoria<br/>Emily Seate (817) 294-9837 Heisey<br/>PO Box 784, Cleburne, TX 76033 and others<br/>E-mail: longseat@flash.net</p> | <p><b>CRYSTALLINE COLORS</b><br/>Buy, Sell, and Appreciate<br/>Cambridge and Other Elegant Glass<br/>I Love Cambridge<br/>Lynne R. Franks 216-661-7382<br/>Ohio &amp; Western PA Antque Malls</p>   | <p><b>Mary Jane's Antiques</b><br/>Mary Jane Humes<br/>2653 Burgener Dr., Decatur, IL 62521<br/>Glass: Cambridge, Fostoria,<br/>New Martinsville, Duncan Miller,<br/>Imperial and Early Pressed<br/>mjhumes@aol.com 217-422-5453</p>   |
| <p><b>THE GLASS URN</b><br/>456 West Main Street, Suite G<br/>Mesa, AZ 85201 602-833-2702<br/>Mail Order Shows Open Shop<br/>CAMBRIDGE, FOSTORIA, HEISEY, ETC.</p>   | <p><b>YOU CAN ADVERTISE YOUR ANTIQUE SHOP HERE!</b></p>   | <p><b>GATEWAY ANTIQUE MALL, INC.</b><br/>JUST NW OF MINNEAPOLIS-ST. PAUL, MN<br/>Next to Super 8 in Rogers, MN<br/>(I-94/101 Intersection)<br/>85 Dealers 7 Days, 10-6 612-428-8286<br/>ELAINE STORCK, OWNER/DIRECTOR</p>              |
| <p><b>THE DEGENHART PAPERWEIGHT AND GLASS MUSEUM, INC.</b><br/>P. O. Box 186<br/>Cambridge, Ohio 43725-0186<br/>Intersection of US 22 &amp; I 77<br/>Phone 740-432-2626</p>  | <p><b>D &amp; D ANTIQUES</b><br/>Columbus, Ohio<br/>Dick Slifko SHOWS ONLY</p>  | <p><b>JAMESTOWN ANTIQUES</b><br/>16 E. Washington St., Jamestown, OH 45335<br/>Rosepoint and Cambridge our Specialty<br/>Buy (937) 675-6491 Sell<br/>Susan and Larry Everett</p>   |
| <p><b>THE GLASS CUPBOARD</b><br/>P. O. Box 652<br/>West End, North Carolina 27376<br/>Marcia Ellis<br/>910-673-2884<br/>Show Cambridge</p>   | <p><b>JUDY'S ANTIQUES</b><br/>Judy Bennett<br/>422 S. Ninth Street (Corner of Jefferson)<br/>Cambridge, Ohio 43725<br/>Bus. 740-432-5855<br/>Res. 740-432-3045<br/>CAMBRIDGE GLASS MY SPECIALTY</p> | <p><b>Horse'n Around Antiques</b><br/>Kelvin and Heather Moore<br/>Exit 69 on Interstate 64<br/>Woodlawn, IL 62898<br/>e-mail: hmoore@midwest.net<br/>TEL: 618-735-9114<br/>Specializing in Cambridge and other Elegant Glass</p>      |
| <p><b>FINDER'S ANTIQUE HOUSE</b><br/>3769 Highway 29 North<br/>Danville, VA 24540<br/>(804) 836-6782<br/>Cambridge-Heisey-Duncan-Fostoria</p>  | <p><b>GREEN ACRES FARM</b><br/>2678 Hazelton Etna Rd., Pataskala, OH 43062<br/>(State Route 310 North)<br/>Sat &amp; Sun 1-7 PM 740-927-1882<br/>Antiques, Crystal Glass and Collectibles</p>       | <p><b>CRYSTAL LADY</b><br/>1817 Vinton St., Omaha, NE 68108<br/>Bill, Joann, and Marcie Hagerty<br/>Bus. 402-341-0643 Res. 402-391-6730<br/>Specializing in Elegant Glass &amp; Collectibles</p>                                       |
| <p><b>YOU CAN ADVERTISE YOUR ANTIQUE SHOP HERE!</b></p>  | <p><b>YOU CAN ADVERTISE YOUR ANTIQUE SHOP HERE!</b></p>   | <p><b>PENNY COURT MALL</b><br/>637 Wheeling Avenue<br/>Cambridge, Ohio<br/>100 Booths 15,000 sq. ft.<br/>HOURS: Daily 10-6 Sunday Noon-5<br/>Closed: Easter, Thanksgiving, Christmas<br/>Call for Other Holiday Hours 740-432-4369</p> |
| <p><b>MICHAEL KRUMME</b><br/>Cambridge and other elegant glassware<br/>(323) 857-0140 e-mail mkrumme@pacbell.net<br/>website http://www.glassshow.com<br/>PO Box 48225<br/>Los Angeles CA 90048-0225 Send your want list</p>   | <p><b>Warren and Mary Welsh</b><br/>Cambridge &amp; Other Elegant Glassware<br/>3635 Saddle Rock Rd., Colorado Springs, CO<br/>80918<br/>(719) 531-5866<br/>WELS@EARTHLINK.NET</p>                  | <p><b>MARGARET LANE ANTIQUES</b><br/>2 E. Main St., New Concord, OH 43762<br/>Lynn Welker 740-826-7414<br/>Cambridge Glass Matching Service<br/>Hours Mon-Fri 10-12 AM, 1-5 PM or by Appointment</p>                                   |
| <p><b>ISAACS ANTIQUES</b><br/>(740) 826-4015<br/>See our booths in Penny Court Mall in Cambridge and White Pillars Antique Mall at Rt. 40, one mile west of I-70 Norwich Exit #164</p>   | <p><b>ALADDIN LAMP BOOKS</b><br/>Free List<br/>Figurine Lamps Wanted<br/>Bill &amp; Treva Courter<br/>3935 Kelley Rd. Kevill, KY 42053<br/>Phone/FAX 502-488-2116</p>                               | <p><b>DEXTER CITY ANTIQUE MALL</b><br/>P. O. Box 70, Dexter City, Ohio 45727<br/>(740) 783-5921<br/>Located on Ohio St. Rt. 821<br/>Between Exits 16 &amp; 25 off I-77<br/>Just 30 min. South of Cambridge, Ohio</p>                   |

# AUCTION

All Cambridge Glass and Related Items

from the Private Collection of

***Phyllis and (the late) Bill Smith***

**Thursday, June 22, 2000**

**10:00 a.m.**

Doors Will Open at 9:00 a.m.

Pritchard Laughlin Civic Center — In the Galleria  
Glenn Highway (US 40 W at I-70) Cambridge, OH

**FOOD WILL BE AVAILABLE**

Auctioneer: Craig Connelly  
Smith

Owner: Phyllis

Auction Catalogs will be available - Send 33-cent SASE (#10 business envelope)  
Phyllis D. Smith, 4003 Old Columbus Road, Springfield, OH 45502-8802

National Cambridge Collectors Inc  
PO Box 416  
Cambridge OH 43725-0416  
<http://www.cambridgeglass.org>  
e-mail: [NCC\\_Crystal\\_Ball@compuserve.com](mailto:NCC_Crystal_Ball@compuserve.com)

---

FIRST CLASS MAIL  
U.S. POSTAGE  
PAID  
PERMIT NO. 1  
CAMBRIDGE, OH

---

## FIRST CLASS MAIL

*Membership Renewal Notice*

**If the date on your address label is 4-2000,  
this is your LAST ISSUE of the Crystal Ball.**

Please take a moment and renew now. Thank you!