



# Cambridge Crystal Ball

Published monthly by National Cambridge Collectors, Inc.  
to encourage and report the discovery of the elegant and boundless product of the  
Cambridge Glass Company of Cambridge, Ohio

Issue No. 326

June 2000

## Gay LeCleire Taylor to Speak At NCC Convention 2000

by Mark Nye



Gay LeCleire Taylor  
Curator, Museum of American Glass  
at Wheaton Village in Millville, NJ

Gay LeCleire Taylor, this year's NCC Inc. Convention Banquet speaker, has been curator, Museum of American Glass, Wheaton Village, Millville, NJ, since 1975. Prior to that she was registrar/librarian at the Wheaton Village Museum of American Glass. Ms. Taylor has a bachelor of science degree in art education from Kutztown State College, Kutztown, PA.

Ms. Taylor lectures frequently on a wide range of glass-related topics. Among other subjects, she has lectured on New Jersey Glassmaking, Durand Art Glass, American Pressed Glass, South Jersey Paperweights, Kemple Glass Company, Glass on the Victorian Table, The Quezal Art Glass and Decorating Company, and Contemporary Studio Glass. She has presented lectures at the Corning Museum of Glass; Explorers Hall, National Geographic Society; to the Historical Society of Western Pennsylvania, Paperweight Collectors Association, Inc., Friends of the Hermitage, and many others.

In addition to her duties at Wheaton Village, Gay is also active in a number of organizations. She is current Region I director, Paperweight Collectors Association; a member of the board of directors, National American Glass Club; trustee, New Jersey Association of Museums, and second vice president, The Glass Research Society of New Jersey.

### ***Inside This Issue:***

Convention Time is Here  
Convention 2000 Update  
Apple-Blossom, A Revisit  
Do Not Try This At Home  
RosePoint Update

As curator of the Museum of American Glass at Wheaton Village, Ms. Taylor has authored or contributed to a number of exhibition catalogs covering special exhibits at the museum. She has also been a frequent contributor to the Annual Bulletin of the Paperweight Collectors Association, Inc.

Ms. Taylor's topic for the annual NCC, Inc. Banquet lecture will be "Glass Making in Three Centuries, 19th, 20th and 21st."

## Cambridge Crystal Ball

Official publication of National Cambridge Collectors Inc., a non-profit corporation with tax exempt status. Published once a month for the benefit of its members. All rights reserved: reproduction in whole or in part without written permission of NCC and the author is prohibited.

Membership is available for individual members at \$17.00 per year and an additional \$3.00 for associate members (12 years of age and older, residing in the same household). Of the master member dues, \$12.00 is credited to a one-year subscription to the *Crystal Ball*. All members have voting rights, but only one *Crystal Ball* per household. **Multi-year memberships are available: 2 years for \$33.00, 3 years for \$49.00.**

### 1999-2000

#### OFFICERS AND COMMITTEE CHAIRPERSONS

President .....	Tarzan Deel
Vice President .....	Richard D. Jones
Secretary .....	Sharon Miller
Treasurer .....	Charles Upton
Sergeant-at-Arms .....	Michael Neilson
Acquisitions .....	Lynn Welker, Lynne Franks
Budget & Finance .....	Dennis Snyder
By-Laws .....	Bud Walker
Corresponding Secretary .....	Charles Upton
Technology .....	Linda Roberts
Membership .....	Jeff Ross
Museum Relocation .....	Richard D. Jones
Museum Facilities .....	Carl Beynon, Joe Miller
Museum Interior .....	Lynn Welker, J.D. Hanes, Marybelle Teters
Non-Glass Items .....	Carl Beynon
Nominating .....	Rick Jones
Program .....	Bill Hagerty
Projects .....	Bill Hagerty
Publications .....	Mark A. Nye
Publicity .....	Cynthia A. Arent
Study Group Advisor .....	Marybelle Teters
2000 Convention .....	Mark A. Nye
2000 Auction .....	Squeek and Dorothy Rieker, Tom and Noreen Kullman, Lynn Welker
2000 Glass Show .....	Mary Beth Hackett, Joy McFadden
2000 Glass Dash .....	Bud Walker
<i>Crystal Ball</i> Editor .....	Lorraine Weinman
<i>Crystal Ball</i> Circulation Directors .....	Lisa and Mike Neilson
WebMaster .....	Linda Roberts

Internet website: [www.cambridgeglass.org](http://www.cambridgeglass.org)

**DUE TO FLOODING IN CAMBRIDGE, OHIO, THE NATIONAL CAMBRIDGE COLLECTORS' MUSEUM OF CAMBRIDGE GLASS AT 9931 EAST PIKE ROAD WILL NOT BE OPEN.**

**THE TEMPORARY NCC MUSEUM IS LOCATED IN PENNY COURT MALL IN DOWNTOWN CAMBRIDGE, OHIO.**

## ADVERTISING RATES

### Display Rates (camera ready ads preferred)

Unit	Members	Non-Members
Full Page	\$45.00	\$60.00
3/4 Page	\$35.00	\$50.00
1/2 Page	\$25.00	\$35.00
1/4 Page	\$15.00	\$25.00
1/8 Page	\$10.00	\$15.00

(\$5.00 additional if a photograph is included in display ad)

### Classified Rates

10 cents a word \$2.00 minimum

Abbreviations and initials count as words. Type sizes cannot be mixed in classified ads. **Payment in full must accompany all ad copy.** Contact Editor for copy assistance.

### Dealer Directory

Six Line Maximum \$24.00 for 12 month contract  
Also included - Listing on our Internet site at:  
[www.cambridgeglass.org](http://www.cambridgeglass.org)

Cambridge *Crystal Ball* assumes no responsibility for items advertised and will not be responsible for errors in price, description, or other information.

**Advertising copy, letters, articles, must be received by the 5th of preceding month to be considered for publication in the next issue.**

Please address all correspondence (include SASE) to:  
(or E-Mail [NCC\\_Crystal\\_Ball@compuserve.com](mailto:NCC_Crystal_Ball@compuserve.com))

**National Cambridge Collectors, Inc.  
P.O. Box 416  
Cambridge, OH 43725-0416**

President Tarzan Deel	540-869-3949
Vice President Rick Jones	914-631-1656
Secretary Sharon Miller	740-685-6513
Membership	email: <a href="mailto:jaross@cambridgeoh.com">jaross@cambridgeoh.com</a>
NCC Museum: Phone	740-432-4245
Fax	740-439-9223

**Please notify us immediately of any address change.**

Opinions or information stated in any signed article or letter printed in the *Crystal Ball* are those of the author and may not agree with National Cambridge Collectors, Inc. The Editor reserves the right to refuse and to edit any material submitted for publication to conform to the editorial style of the *Crystal Ball*. Members are encouraged to write to NCC and the *Crystal Ball* sharing their knowledge and questions.

## President's Message

# *Convention Time is Here*

Can you believe that it is time for Convention already? It's hard to believe the year is going by so fast. So much is underway: looking for or building a new museum, planning an interior for it, projects to pay for a new museum, as well as a way to keep our organization in view of the public. It takes a lot of hard work by volunteers who are dedicated to our mission.

Convention should be interesting. Mark has always had the knack of making our convention one of the most interesting. He has a lot of different activities planned for Convention. I am sure we can all learn something at any of them. Thanks, Mark, for all of the hard work, and thanks to all of the people helping you with the preparations. Mark has received donations for the convention booklets. Many thanks to all of you who have stepped up and donated to this cause.

If you haven't made your hotel/motel reservations yet, you should do it soon. While there are new motels in Cambridge, they run at a high occupancy rate. The sooner you get your room, the better.

Jeff Ross, our membership committee chairman, has done a great job, but could use your help. When you get your renewal, don't wait. Send it in. It will reduce his workload, since his son has added to his workload. This is easy for all of us to help and make the organization

work more efficiently. As usual, I ask, have you signed up a new member?

I'd like to thank everyone working on the museum acquisition/relocation committee. These people have given up a great deal of their personal lives to take on this issue and we cannot thank them enough. I hope to be able to meet with this committee and thank each member for his or her efforts. We hope that by Convention we will have something of substance to report.

The Scotty Dogs are selling well. If you have not bought yours, order now and pick them up at convention. See page 17 for the order form.

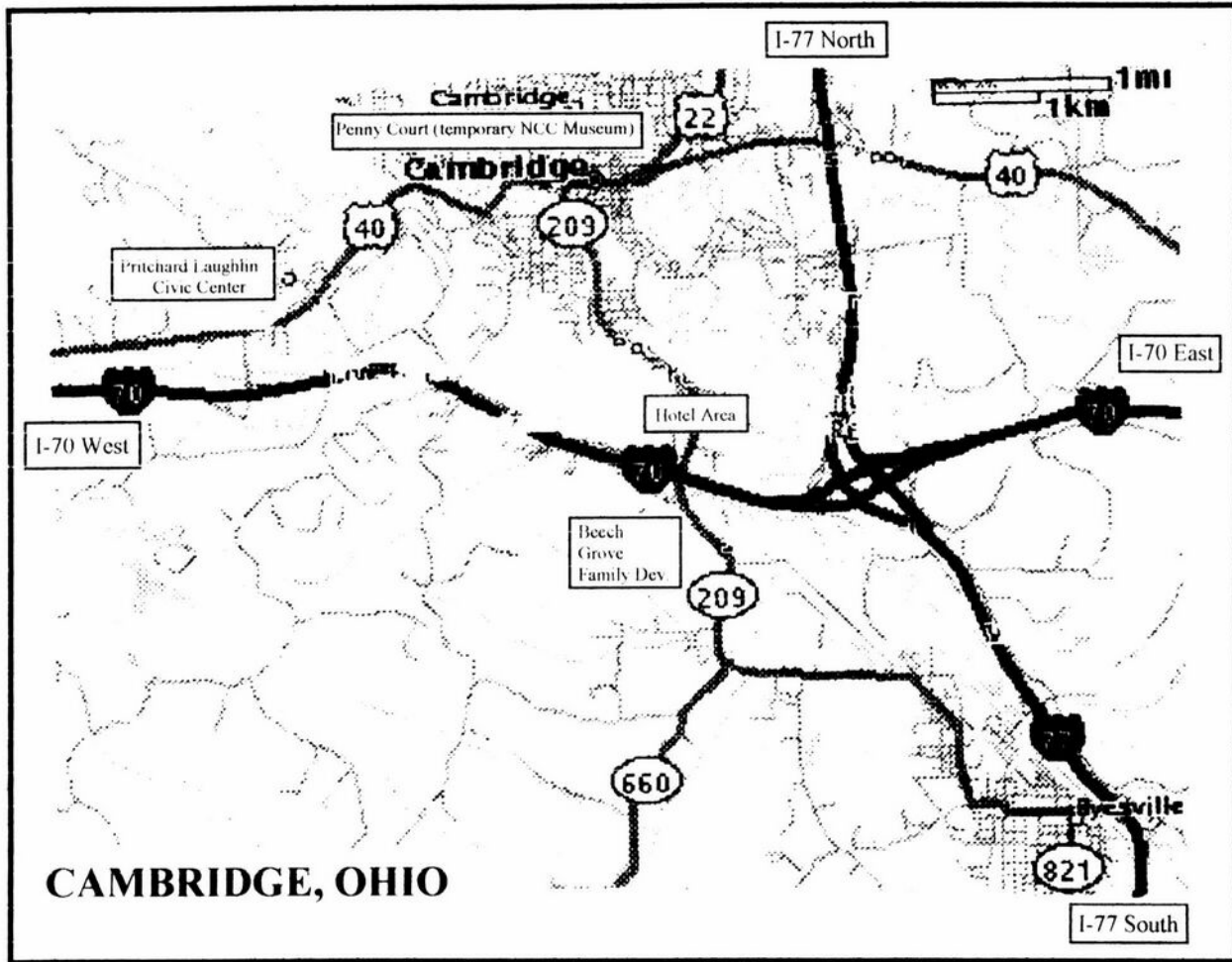
Mark said that he will have the new books on Candlelight, Blossom Time, and Chantilly at Convention. He also said that the Rosepoint price guide will be available at Convention. Thanks to everyone who has worked on it. If you have never worked on a price guide, you should help on one and you'd understand just how much work they are to do.

That's all I have to pass along for now. I hope to see everyone at the NCC Convention.

Tarzan



One of the newest additions to the Cambridge Glass family is Randall Ross, shown here at the NCC Auction with his (left to right) mother, Jill Ross; grandmother, Sharon Miller, and father, Jeff Ross (membership committee chairman). Wonder what Randall has decided to collect?



## Convention 2000 Directions Around Cambridge

For the benefit of those members attending their first NCC Convention and perhaps visiting Cambridge, Ohio, for the first time, we provide the following easy directions to find your way to the motels and from the motels to the Pritchard Laughlin Civic Center.

All of the major motels are located on state Route 209 South or state Route 209 North (aka Southgate Parkway) at Exit 178 off of Interstate 70. If you are coming north or south on Interstate 77, exit to I-70 West, Columbus and Cambridge, and then take the next exit off of I-70 which is #178.

To get to the Pritchard Laughlin Civic Center from state Route 209 (Southgate Parkway), take I-70 West toward Columbus. Take the next exit which is #176, US 40. At the traffic light at the end of the exit road, turn right and go east. It is approximately 1/2 mile to the Civic Center which is located on the north side of the road.

An alternate route to the Civic Center is to take state Route 209 into downtown Cambridge. It dead ends at US 40 in front of the Guernsey County Courthouse. Turn left and follow the signs for US 40 West. The Civic Center will be located on your right (North) side after you leave the city.

Penny Court Antique Mall, home of the temporary NCC Inc. Museum, is located at 637 Wheeling Avenue. Wheeling Avenue is the main east/west street in Cambridge and runs in front of the courthouse. Coming from the motels, take state Route 209 (Southgate Parkway) into downtown Cambridge. When it dead ends at the courthouse, turn left. Penny Court will be located on your right a couple of blocks from the courthouse.

# Convention 2000 Update

by Mark Nye, Convention Chairman

Even though the 2000 National Cambridge Collectors, Inc. Convention begins within the month, you still have time to make plans to attend. If you do wish to attend and have not yet returned your registration form, do so today. They must be received in Cambridge by June 8. We do not send out registration confirmations. You may contact me at (517) 592-3578, evenings only, if you have reason to question whether or not your registration was received. You may also call if you have convention-related questions.

I hope everyone has motel reservations made. With the number of motels that are now in Cambridge, lodging should not be a problem. An alternate location is Zanesville, just a short drive away.

We are pleased to announce that the Degenhart Paperweight & Glass Museum is offering free admission to NCC, Inc. members during our Convention. You must have or be wearing your NCC Convention name tag to take advantage of this offer. The museum has on display a variety of glass including Degenhart, Cambridge, and other Ohio Valley glass companies, as well as paperweights. It is located at the intersection of I-77 and US 22. Directions will be in your convention packet.

If you should arrive after the registration desk has closed on Thursday and you have signed up for the Picnic and early Friday morning activities, registration lists and temporary name tags will be available at the functions.

Please bring donations for the mini-auction. Remember, the mini-auction is a fun auction, any similarity to a real auction is, for the most part, purely coincidental. The function of the auction is to raise money to support the NCC Museum. All items sold are donated and all proceeds go directly to the Museum.

Don't forget to bring that special Cambridge goblet to use at the Saturday Evening Banquet.

NCC golfers arriving early in the week should take advantage of Mike Arent's offer in the April *Crystal Ball*.

See you in Cambridge.

Mark Nye  
Convention Chair

## UPCOMING EVENTS

- |               |   |
|---------------|---|
| July 22 & 23  | Depression Glass Show & Sale<br>Marietta, Georgia<br>770-528-8450                                     |
| July 29 & 30  | 25th Annual Duncan Miller Convention<br>Glass Show & Sale<br>Washington, Pennsylvania<br>724-225-9950 |
| Aug. 18-20    | Knife Rest Collectors Society<br>Second Annual Convention<br>Chicago, Illinois<br>734-485-1442        |
| Sept. 16 & 17 | Washburn's San Antonio Show<br>American Glass, China, & Pottery<br>Live Oak, Texas<br>210-599-0635    |

Know of any interesting events or shows coming up? Please let us know, and as space allows, we will print information about these events.

## New Rosepoint Price Guide Is NOW Available

\$5.00 including postage  
and handling

Send all orders to:

National Cambridge Collectors, Inc.  
P.O. Box 416  
Cambridge, Ohio 43725-0416

Have you visited the NCC website lately?

**Come See What's New**

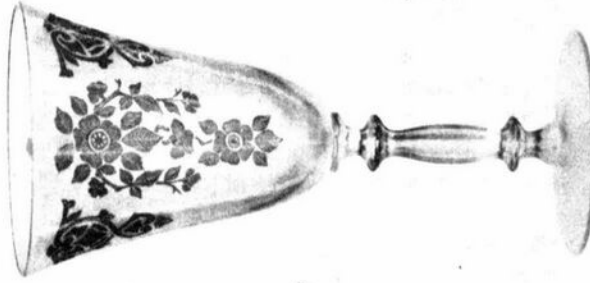
[www.cambridgeglass.org](http://www.cambridgeglass.org)

The Cambridge Glass Co.

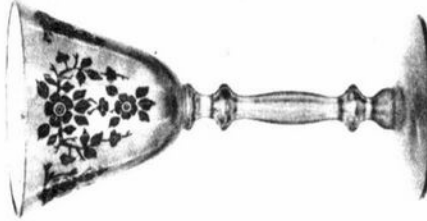
3130 Stemware Plate Etched "744" Apple-Blossom



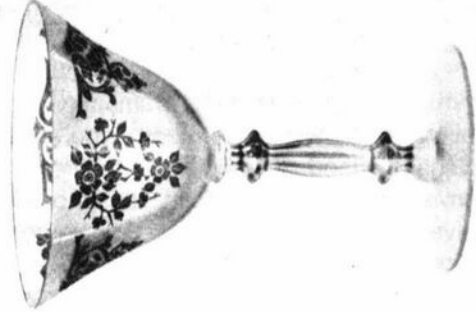
Finger Bowl and Plate



8 oz. Goblet



3 oz. Cocktail



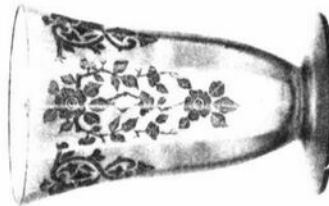
6 oz. Tall Sherbet



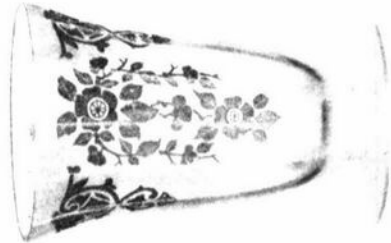
6 oz. Low Sherbet



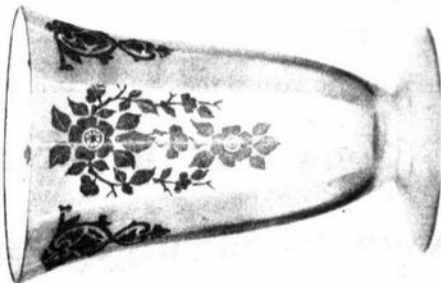
1205-64 oz. Jug



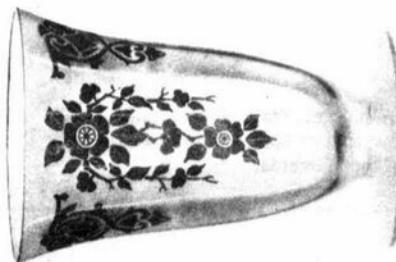
5 oz. Footed Tumbler



8 oz. Footed Tumbler



12 oz. Footed Tumbler



10 oz. Footed Tumbler



# Apple-Blossom

## A Revisit

by Mark Nye

I originally wrote about Apple-Blossom for the *Crystal Ball* issue dated August 1983. It doesn't seem possible it has been 17 years since it first appeared. During those years additional information has been obtained and it is shared here in this updated article. Much of the new information has to do with Apple-Blossom etched stemware.

Unlike the natural flower of the apple tree, the Cambridge etching Apple-Blossom comes in a wide range of colors and special treatments. Colors known to this writer are Crystal, Gold Krystal, Willow Blue, Amber, Emerald (light), Heatherbloom, Peach-Blo, Forest Green, Amethyst, Ebony, and Royal Blue. When placed on the last three colors, the etching was silver encrusted.

Silver-encrusted Apple-Blossom referred to as D/970-Sand is shown on Ebony ware on several pages of the 1931 Cambridge catalog supplement. Pictured are such items as the 3400/68 sugar and creamer, 1020 cocktail shaker, 1070 36-oz. pinch bottle, 1229 9-inch oval vase, and several bowls.

One page of the 1931 catalog supplement (reprinted as page 31-13 in the NCC reprint of the 1930-34 catalog) is entitled "Silver Decorated Ware." There is no mention of color but since there is duplication of items found on the Ebony/silver encrusted pages, items on this page were probably being offered in at least Amethyst and perhaps other colors, Royal Blue being a possibility. An advertisement in the August 1931 issue of "Crockery and Glass" promotes silver-encrusted Apple-Blossom as "offered in a wide selection of table pieces." I have in my collection a 646 5-inch keyhole candlestick in Royal Blue etched Apple-Blossom and silver encrusted. Unfortunately there is no known listing of what pieces were done in what colors.

Dinnerware and luncheon sets are known in all of the listed colors with the exception of Forest Green, Ebony, and Royal Blue. The pieces I have seen in Forest Green have been occasional, accessory or service items; for example, the 3400/94 puff box and the 3400/38 80-oz. ball jug. Ebony and Royal Blue Apple-Blossom was probably entirely silver encrusted, otherwise the etching would not be easily seen on the dark blanks. Production in these two colors was most likely limited to the items seen on the silver encrusted pages of the 1931 catalog supplement.

The 1930 Cambridge catalog devoted its first nine pages to showing Apple-Blossom. Seven of these show items from the 3400 line while the other two pictured two stemware lines, Nos. 3135 and 3130, and two jugs, Nos. 1205 and 711. From the 3400 line are shown various accessory pieces in addition to dinnerware. Both styles of the 3400 plates, round and square, are shown with the etching is the club luncheon plate, 3400/66. Other pieces shown include creams and sugars, butter and cover, serving bowls, cream soup, cereal and fruit bowls, and cup/saucer.

There are at least 10 Cambridge stemware lines that were etched Apple-Blossom. These are 1066, 1069, 3011, 3025, 3120, 3124, 3130, 3135, and 3400. Several are pictured in the 1930 catalog and its supplements etched Apple-Blossom while some are known etched Apple-Blossom only through a limited number of samples in private collections. One line, 1069, is pictured in a book dealing with Fostoria.

In one of the few photographs in the late Hazel Marie Weatherman's book "Fostoria Its First Fifty Years" is a 1069 goblet etched Apple-Blossom. The picture is in color, featuring Fostoria's pink, known as Rose, and in the back is a 1069 goblet etched Apple-Blossom. There is no question as to the identity of either the piece or the etching. Reportedly the pieces came out of the Fostoria morgue and at the time the book was published, 1972, no one recognized that the goblet was not Fostoria. This is the only piece of 1069 stemware this author is aware of.

Apple-blossom on 1066 blanks goes undocumented except for examples in private collections. Pieces are known in Crystal, Peach-Blo, and Forest Green. I have in my collection a Forest Green 1066 parfait etched Apple-Blossom.

(Continued on page 8)

**(APPLE-BLOSSOM—Continued from page 7)**

Illustrated in the 1931 Cambridge catalog supplement were five pieces from the 3011 line, four stemware pieces, and the 7-inch cupped comport. The stemware items shown are the banquet and table goblets, the tall sherbet or champagne, and the 3011/9 cocktail. No reference is made to color. The author does have a crystal table goblet etched Apple-Blossom in his collection.

A complete selection of 3130 stemware was produced etched Apple-Blossom in at least six colors, one color combination, and one decoration. The known colors are Crystal, Emerald (light), Gold Krystal, Peach-Blo, Willow Blue, and Amber. The color combination is Crystal bowl with Ebony stem and foot while the decoration consists of the medallion portion of the etching done in gold and black enamel.

Apple-Blossom etched 3135 stemware may be found in Crystal, Emerald (light), Peach-Blo, Willow Blue, Amber, and Gold Krystal. Pieces seen have been solid color (bowl, stem and foot), all Crystal, or Gold Krystal bowl, crystal stem and foot.

The 3400 stemware line etched Apple-Blossom came with colored bowl, stem and foot and is known in Amber, Emerald (light), Gold Krystal, Peach-Blo, and Willow Blue. This line was also produced in all Crystal and Crystal bowl with Ebony stem and foot.

Like many of the Cambridge lines from the early 1930s, there is little documentation as to color. What is known usually is through actual pieces now in collections. The stemware line is known in three color combinations: Crystal bowl with Ebony stem and foot, Crystal bowl with Emerald (light) stem and foot, and Gold Krystal bowl with Amber stem and foot. In the author's collection are Apple-Blossom pieces in the latter two color combinations. It is possible Apple-Blossom was placed on the Crystal/Ebony blanks as well.

Use of the Apple-Blossom etching on the 3120 and 3124 stemware lines was initially reported by a collector of this pattern who has examples. Since then, the author has found several examples of 3120 etched Apple-Blossom but 3124 remains illusive. The single known piece of 3124 stemware etched Apple-Blossom is a Gold Krystal bowl/Crystal stem and foot tall sherbet or champagne. Apple-Blossom is now known on Crystal 3120 blanks as well as Crystal bowl/Amber stem and foot and Gold Krystal bowl/Crystal stem and foot.

Six styles of Apple-Blossom etched jugs are shown in the 1930 catalog and its supplements. Those shown are the 711 76-ounce footed jug and cover, 1205 64-ounce jug, 3400 50-ounce footed jug, 935 64-ounce jug, 3400/38 80-ounce ball jug, and the 3400/27 67-ounce jug. All of these were probably made in Crystal and color.

The 693/300 two-piece canape set was etched Apple-Blossom. It is interesting to note that the canape plates in the author's collection have a Laurel Wreath band on the rims in addition to the Apple-Blossom etching in the center.

Some years ago, prior to the original article being written, a pair of boudoir lamps incorporating Amber 1309 vases etched Apple-Blossom as the main portion of the lamp base were offered by a dealer. These lamps were not assembled by Cambridge. The vases would have been purchased from Cambridge by an unidentified lamp maker and then made into the lamps. The current location of these lamps is not known.

A blown 3121/4 low candy box and cover, in Crystal, etched Apple-Blossom is in a private collection. This too was acquired a number of years ago.

Since Apple-Blossom was an important part of the Cambridge line during the early 1930s, a collector should not be surprised to find the etching on almost any piece from the 3400 line dating to the era.

First produced in 1930, Apple-Blossom was discontinued prior to 1940, most likely in the mid to late 1930s and perhaps gradually. A 3130 low sherbet with an original trademark label without the Triangle C is in the author's collection. It has been reported this label was first used in 1938. This indicates Apple-Blossom etched stemware was still available as late as 1938.

During the 1940s the name Apple Blossom was reused, this time for a gold transfer decoration also known as D/1036. Seldom seen today, this later design does not resemble the etching and will not cause any problems for the collector.



# Do Not Try This At Home

by Georgia G. Otten



**LEANING URN OF CAMBRIDGE**

I know you have all heard the phrase that beauty is in the eye of the beholder. Well, so is ugly! While it is difficult to imagine the word "ugly" in the same sentence with the word "Cambridge," I reiterate, ugly is also in the eye of the beholder. Our program for the evening [the January meeting of the Miami Valley Study Club] was for each person to bring two pieces of Cambridge glass from his or her collection. One piece was to be their most prized and the other to be a piece they thought was "ugly." My first thought that came to mind was to wonder if someone might bring their "ugly" piece and find that it is the same piece someone else brought as most prized! Risky business this program! I gladly report that no one was offended.

Our study club secretary, Judy Rhoads, has already submitted the news from our club about this program [see the February 2000 issue of the *Crystal Ball*] and reported on what each person brought. I wanted to give a little more detail about the "ugly" brought by Larry Everett. Apparently he came across this "fallen urn" and got into a conversation with the owner. It seems this person had acquired this piece and was hopeful to have the gold restored. That person thought that since the urn was wired and used as a lamp, the heat from the bulb had caused the gold to wear away over time. The urn was taken to a professional restorer in the Cincinnati area and the refurbishing was discussed. Seems there were two avenues of thought; touch up the gold with paint alone or touch up and re-fire. Wanting the best possible and longest lasting result the second option was chosen. The picture tells the story! Guess it was a little too hot for a little too long! Melt down at the ring and curl up on the foot!

While this story seems tragic, it was a windfall for Larry. He was only interested in the lid, which had not been subjected to re-firing! He was able to make the deal for the "fallen urn" and got his lid. Of course one could not dispose of a Crown Tuscan urn no matter what, so it was saved. And after all, you never know when the "ugly" will provide pleasure and be appreciated by someone else!

This was a fun meeting for our club. I believe everyone had a good time with the subject matter and with the story telling that accompanied many of the pieces. Oh, in the picture of Larry and the urn can you just see the edge of a wonderful Rose Point plate edged with Wallace Rose Point sterling? Now that is beautiful! Or so say some!

**There is certainly no absolute standard of beauty.  
That precisely is what makes its pursuit so interesting.**

*John Kenneth Galbraith*

**Tentative  
2000  
Calendar Planning**

Mark your calendars now with these important events during the coming year:

**June 21-25**

2000 National Cambridge Collectors' Convention  
Pritchard Laughlin Civic Center  
Cambridge, Ohio

**June 23-25**

NCC Glass Show and Sale  
Pritchard Laughlin Civic Center  
Cambridge, Ohio

**June 24**

"Glass Dash" ("flea" market)  
Beech Grove Family Development Center  
Cambridge, Ohio

**June 25**

NCC Annual Meeting  
Pritchard Laughlin Civic Center  
Cambridge, Ohio

**August 26**

August Quarterly Meeting  
Theo's Restaurant/Coney Island (tentative)  
Cambridge, Ohio

**Membership Benefit**

Another great benefit to your membership is access to a private "members only" website.

Copies of research articles from the back issues of the *Crystal Ball* are now available there. The old back issues were lost in the flood of 1998, but now the research materials contained in them are coming back to be shared with the entire membership.

To access the site, follow this URL:  
<http://www.cambridgeglass.org/NCCMembers>

You will be prompted for an ID and password. These are case sensitive. They will also change periodically, so keep reading your current issues of the *Crystal Ball*. Please do not share the passwords with non-members! The private site is intended to benefit you, and that benefit will be diluted if the ID and password is shared indiscriminately.

ID: NCC      Pswd: TriangleC

**THE PEACH STATE DEPRESSION  
GLASS CLUB PRESENTS  
THE 24TH ANNUAL**

**DEPRESSION GLASS  
SHOW & SALE**

**JULY 22 & 23, 2000**

SATURDAY 9 A.M. TIL 5 P.M. ● SUNDAY 10 A.M. TIL 4 P.M.

**COBB COUNTY CIVIC CENTER**

548 SOUTH MARIETTA PARKWAY ● MARIETTA, GEORGIA

TELEPHONE 770-528-8450

*Featuring*

**28  
OUTSTANDING  
DEALERS  
FROM  
FOURTEEN  
STATES**



**ADMISSION \$4.00 — GOOD FOR BOTH DAYS  
FREE PARKING**

# Rose Point Update

By Mark Nye

HEISEY COLLECTORS OF AMERICA, INC.  
NATIONAL CONVENTION

*Featuring the 30th Annual*

## PREMIERE GLASS SHOW

*50 prominent dealers from across the U.S.*

**JUNE 14 - 17, 2000**



*Visit the free*  
**HEISEY GLASS DISPLAY**  
*Hopewell Hall*

OSUN/COTC Campus, Country Club Drive,  
Newark OH, 30 miles east of Columbus off SR 16  
For more information call (740) 345-2932  
or visit us on the web at:  
[www.heiseymuseum.org](http://www.heiseymuseum.org).

*Proceeds benefit the*  
*National Heisey Glass Museum*

Research done during the preparation of booklets dealing with Chantilly, Blossom Time, and Candlelight plus inquiries from Rose Point collectors led to the realization that there were several additional pieces of Rose Point not listed in either the Rose Point book or the price guide.

A collector wrote to say what appeared to be the 3900/124 seven-inch, two-part relish but having the divider run crosswise rather than lengthwise had been found. Research in a copy of the mold order book turned up an order for a new plunger for the 3900/124 relish "so the partition will be crosswise" dated June 1, 1949. When the revised piece was first produced is not known. In all probability the revised piece was produced by the original Cambridge Glass Co. prior to its 1954 closing. It is shown in one of the few photographs used in the catalog issued by the reorganized Cambridge Glass Co. circa 1956.

In 1953, Cambridge price lists were describing several Corinth plates and bowls as "3 footed" while previous lists had described the same pieces as "4 footed." An examination of mold order records found entries dated 1948 for new molds for Corinth nappies (bowls) with three feet. (Not only is a bowl mold used to make a bowl but also, with hand finishing, to produce a plate.) Once again it has not been determined when the new molds actually were constructed and put into use!

The following items are now being added to the list of known Rose Point etched blanks. The latter four pieces will be virtually identical in shape to the 4-footed pieces. There may be a slight variation in size due to the fact these were new molds.

Item No.	Description
3900/124	7 in. 2 part relish, crosswise divider
3900/26	12 in. 3 ftd. plate
3900/33	13 in. 3 ftd. torte plate, r.e.
3900/54	10 in. 3 ftd. bowl, flared
3900/62	12 in. 3 ftd. bowl, flared

***Hoping to see YOU at Convention !***

# NATIONAL STUDY GROUP REPORTS



## **Study Group #13 The Miami Valley (Ohio) Study Club**

The meeting of the Miami Valley (Ohio) Study Club was held on Tuesday, May 9, 2000, at 6:00 p.m. at the Huber Heights Public Library. Twenty-two members and six guests were present. Our guests were Carl and Charlene Bowman of Clarksville, Ohio; Joanne Beekhuizen of West Milton, Ohio; Barbara Dixon of Loveland, Ohio; Joanna Jones of Cincinnati, Ohio; and Mary Jane Humes of Decatur, Illinois.

Our upcoming events include:

- Annual Picnic on Saturday, July 15, at 4:00 p.m. at Phyllis Smith's house in Springfield, Ohio
- Annual Pig Roast on Saturday, September 9, in Laura, Ohio

Program for the October meeting will be on Cambridge Arms, led by Frank and Vicki Wollenhaupt.

We dispensed with Show and Tell due to the size of the display and the length of the program on Caprice led by David Ray. The variety of pieces and colors, some of them extremely rare, was stunning. David had a helpful handout and a wealth of great information for the serious Caprice collector as well as for the novice. People who helped him with the program included Frank and Vicki Wollenhaupt, George and Bev Stamper, John and Helen Wilt, Fred Schaefer, Dave and Sue Rankin, and Mac and Georgia Otten.

—submitted by Judy Rhoads, secretary

## **Study Group #14 The Cambridge Cordials**

The Cambridge Cordials study group met April 8 at the home of Lisa and Mike Neilson. Fourteen members were in attendance (Carl and Shirley Beynon, Mike and Cindy Arent, Mike and Lisa Neilson, Judy Momirov, Rich Bennett, Jeff and Jill Ross, Mary Welker, Lynn Welker, Joe Miller, and Lorraine Weinman).

The meeting started informally with a wonderful buffet meal and conversation. The Cordials address list was updated. Marybelle and Ward Teters will be added to the list as our latest members. Additional membership information was discussed and updated. Future plans regarding fundraisers was a topic.

Cindy briefly reported on the Workers Reunion plans for Convention. We will work further on this at our May meeting.

Mike Neilson reported on the calendar project progress. After discussion, a plan for the calendar was mapped out and a calendar meeting was set up.

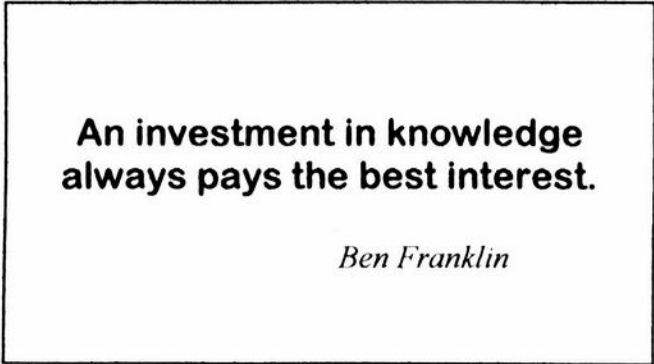
A Show & Tell Session followed. Included were: a Gloria Forest Green nude comport; a Carmen Crackle nude champagne; a Crown Tuscan 3500 cake plate in gold Minerva; an Amber 3400 demitasse cup and saucer, etched Portia; a Vaseline prism sign with the original knock-off; a gold Daffodil console set; and a 1242 vase collection, in a dozen assorted colors, with gold encrusted and silver overlay designs.

The next regular meeting will be May 20 at the home of Jeff and Jill Ross.

## **Study Group #14 The Cambridge Cordials**

On Wednesday, April 19, at 6 pm, the Cambridge Cordials had a short meeting to work on the new calendar project at the home of Mike and Lisa Neilson. This fundraising event is scheduled to begin at Convention in June.

Those present were: Mike and Lisa Neilson, Mike and Cindy Arent, Carl Beynon, Joe Miller, Rich Bennett, Lynn Welker, and Lorraine Weinman.



**\*\*\*NEW STUDY GROUP \*\*\***  
**The Cambridge Wildflowers**

On the third Thursday of every month, our brand new NCC Study Group, the Cambridge Wildflowers, has begun to meet. This month we met at the home of Joy McFadden and MaryBeth Hackett on Thursday evening, April 20, 2000. This was the third in our series of organizational meetings to form an active Columbus, Ohio, group of Cambridge Glass lovers. Members present were: MaryBeth Hackett, Rose MacConkey, Joy McFadden, David Ray, and Barbara Wyrick.

Delicious refreshments of crab toast, artichoke dip, turtle cake, and beverages were served.

A short business meeting was held to elect officers, and the following will initially serve: Linda Roberts, president; David Ray, treasurer; Barbara Wyrick, secretary.

Our theme for this meeting was Cambridge spring pastels and "Wildflowers," and members brought Show & Tell pieces relating to this theme. Among the items brought and discussed were: an Amber 10 1/2" round dinnerware service plate with gold-encrusted Wildflower; a Heatherbloom Mount Vernon cup and saucer set, signed; #3400 8" 2-part relish with sterling butterfly and flower design; a #1043 Type I, Gold Krystal 8 1/2" swan, signed; #1321 28-ounce footed cordial decanter with Lily of the Valley etching; #7966 9-ounce goblet with gold silk-screen Lily of the Valley; a Heatherbloom nude stem banquet goblet; #674 13" Crystal Satin bowl with

decalware floral design; and an 11" Crystal Satin Bashful Charlotte with label.

To date, our meetings have been informal and fun, and along with discussing the Cambridge pastels and flowers, a study was made of the three types of swans, with an example of each type. Other topics of discussion were the process of hand cutting; Cambridge Mardi Gras, Blue Sky and White Cloud; pencil dogs past and present; the upcoming convention; and online buying and selling.

Our previous meetings have focused on two areas: getting our group organized and the study of a Cambridge glass color theme. Our first February meeting took place at the home of Linda and Bryan Roberts and our theme was Cambridge red (for Valentine's Day). Beautiful items of Cambridge glass in Carmen or red highlighting were viewed. Our second, March, meeting took place at the home of Rose MacConkey with a theme of green for St. Patrick's Day, and a compilation of *Crystal Ball* articles was presented, with information on every shade of Cambridge green. Show and Tell items included a sample of every Cambridge shade of green except Avocado.

Our next meeting will be Thursday, May 18, 2000, at the home of Barbara Wyrick. New members are welcome, and if you are interested in joining, please contact Linda Roberts by email at [lrobert2@columbus.rr.com](mailto:lrobert2@columbus.rr.com) or Barbara Wyrick at [bwyr@ee.net](mailto:bwyr@ee.net).

—submitted by **Barbara Wyrick, secretary**

### **HCA Offers Monthly Paperweight Making Class**

The Heisey Collectors of America, Inc. (HCA) offers a paperweight making class the **second Saturday of every month from 9 a.m. – 12 p.m.** Class participants design and make their own paperweight, gathering molten glass from the furnace, adding color and shaping it themselves, with assistance from the instructor. Classes take place at the HCA Glass Studio in the Institute for Industrial Technology, located at 55 South First Street in Newark. Cost is \$40 per person. Reservations are required, and class space is limited. Private classes for groups of 5-8 people may also be arranged for other dates and times. For more information or to reserve a spot in an upcoming class, call Studio Supervisor Johanna Burgess at the National Heisey Glass Museum, (740) 345-2932.

# The Year In Poetry

## 1996

by

### Paul E. White

A book of poems celebrating the year 1996 written by the National Cambridge Collectors member and ardent supporter, Paul White. A number of Mr. White's poems have, over the years, appeared in the Crystal Ball. None of the poems in this book have previously appeared in print. Available from NCC for \$7.95 plus \$3.00 shipping and handling. All proceeds go to Mr. White. Send orders to NCC, Inc. P.O. Box 627, Cambridge, OH 43725

• TIFFIN • DUNCAN MILLER • FENTON • HEISEY •

CAMBRIDGE • FRY • FOSTORIA

IMPERIAL • OLD PRESSED GLASS

### 25th Annual Duncan Miller Convention Glass Show & Sale



Sponsored By  
*The National Duncan Glass Society*



**July 29-30, 2000**

**10:00 A.M. to 4:00 P.M.**

**Alpine Club**

Benefits  
Duncan Museum

735 Jefferson Avenue, Washington, PA  
I-70 Exit 6 1/2 Mile

**Auction Saturday, July 29, 2000 - 5:30 P.M.**

**Thistlecrest Auction House, Rt. 40 E.**

**\$.50 Discount With This Card/Ad**

Lunch  
Sponsored By  
Duncan Club

For Information Call:  
**(724) 225-9950**

**Admission  
\$3.50**

• NEW MARTINSVILLE • PADEN CITY • MORGANTOWN •

National Cambridge Collectors, Inc.  
Presents



*Blossom Time*

*Candlelight*

*Chantilly*

*Diane*

*Elaine*

*Portia*

*Wildflower*



Introducing a new series of booklets covering seven of the major Cambridge etchings. These booklets are similar in style to the Rose Point book. Compiled by Mark Nye, each contains an article about the etching, listings of all the known pieces, and an illustration of each item. Economically priced at \$7.95 each, collectors of these etchings cannot afford to be without a copy. Blossom Time, Candlelight and Chantilly will be introduced at this month's NCC, Inc. convention. Diane, Elaine, Portia and Wildflower will be available later this year.



## CAMBRIDGE GLASS BOOKS FOR SALE

By National Cambridge Collectors, Inc.

### Colors in Cambridge Glass

128 pages, 60 color plates, full index. Hardbound w/ value guide ..... 19.95

### 1910 Nearcut

108-page reprint of original 1910 catalog. PB w/ value guide ..... 14.95

### 1930-1934 Cambridge Glass Co. Catalog Reprint

250-page reprint of original catalog. PB w/ value guide ..... 14.95

### 1949-1953 Cambridge Glass Co. Catalog Reprint

300-page B&W reprint of original catalog. B&W PB  
w/ value guide ..... 14.95

### Cambridge Caprice

200-page book illustrating one of the most popular lines of Cambridge Glass. Lists color, decorations, reproductions and rare pieces. PB  
w/ value guide ..... 19.95

### 1940 - 1941 Cambridge Glass Co. Catalog Reprint

250-page reprint of original catalog and all well known supplemental pgs. Loose Leaf & Drilled, ready for placement in your own three-ring binder. Due to its size, the reprint does not have a value guide. B&W ..... 34.95

Binder for 1940/1941 catalog with logo on front... (no discount) ..... 5.00

### Cambridge Rose Point by Mark Nye

94-page book listing of Rose Point from several sources: catalogs, trade journals, price lists, etching plates, and other surviving company records. One of the most popular lines of The Cambridge Glass Company, showing the many blanks on which Rose Point might be found along with the history and production life of the line. B&W PB  
w/ value guide ..... 14.95

### Etchings by Cambridge, Vol. 1 By the Miami Valley Study Group

84-page book showing samples of plate etchings applied by The Cambridge Glass Company. B&W, PB. Due to the style of publication this book does not have a value guide. ..... 14.95

### The Home of "Near-Cut" Factory Post Card

B&W picture of The Cambridge Glass Company post card. .... 50

### Crystal Lady Video

Approximate 25 minute video copy of old Cambridge Glass Co. film showing the making of a goblet in the Cambridge factory. .... 15.00

### Rose Point Value Guide (Included with Rose Point Book purchase)

Value guide only, includes postage ..... 5.00

N. C. C. Members can purchase the above publications at a 10% off

Crystal Ball Table of Contents Issue #69, January 1979 thru Issue #320, December 1999 (no discount) ..... 2.00

### Other books on Cambridge Glass

#### Cambridge Glass 1927-1929 by Bill and Phyllis Smith

66-page reprint of original catalog. B&W paperback  
with updated value guide ..... 7.95

#### Cambridge Stemware by Mark A. Nye

167 page book showing as many known Cambridge stems known at the time of publication. B&W paperback. No value guide. ..... 19.95

#### Cambridge Glass Company by Mary, Lyle and Lynn Welker

120 pages of reprints from eight old catalogs. B&W paperback.  
No value guide. ..... 10.00

#### Cambridge, Ohio Glass in Color II by Mary, Lyle and Lynn Welker

15 Color plates showing choice pieces from their collection.  
Spiralbound. No value guide. ..... 5.95

#### Cambridge Glass Company 1903 by Harold & Judy Bennett

106-page reprint of original catalog. B&W, PB, no value guide. ..... 5.00

#### Reflections by the Degenhart Paperweight & Glass Museum

45-page book giving a history of all 18 glass companies in Guernsey County. B&W paperback with pictures. .... 5.00 including postage

address orders to:

Books, National Cambridge Collectors, Inc.

P. O. Box 416

Cambridge, OH 43725-0416

Please add postage and handling to your order (first book, \$3.00; each additional book \$1.00). Ohio residents add 6 1/2% state sales tax.

Only check or money order. NO CASH, NO CHARGE CARDS.

Dealer Discounts Available. Please Write!

## OTHER ITEMS FOR SALE FROM THE NATIONAL CAMBRIDGE COLLECTORS GLASS MUSEUM

### Brochures:

Chantilly	25
Laurel Wreath	10
Lynbrook	10
Martha	25
Rondo	10
Roxbury	10
Star	10

Please include SASE for above brochures

2000 Museum Fund Raising project - Scottie Dog Bookends made in original Cambridge Molds, by Mosser Glass. Made in Ruby (Red) Marked with N.C.C., the 2000 date and Mosser logo.

(Ea. pair) 100.00

Please include \$10.00 shipping and handling.

Ohio residents include \$6.50, per pair, for Ohio State Sales Tax

The following Convention Favors are marked with the N. C. C. name & yr  
Convention favors

1988 Cobalt, Cambridge Square Cigarette Holder	2.00
1994 Crystal Iridized, Cascade Goblet	5.00
1995 Cranberry Ice, Cascade Goblet	5.00
1996 Carnival, Cascade Goblet	5.00
1998 Yellow Iridized, Cascade Goblet	5.00
1999 Crystal, Opal Edge, Cascade Goblet	5.00
Prism with "Cambridge" on one side. Fund raiser, Mint Julep	15.00

Please include \$3.00 shipping & handling on each order of 5 items

Donate \$10.00 to the N. C. C. building fund and we will send you a nice, Yellow Canvas Tote Bag with N.C.C. logo on front

### Books by Gene Florence

Hardbound color with value guides

Very Rare Glassware of the Depression Years (Third Series)	24.95
Very Rare Glassware of the Depression Years (Fourth Series)	24.95
Very Rare Glassware of the Depression Years (Fifth Series)	24.95
Elegant Glassware of the Depression Era (Eighth Edition)	19.95
Collectible Glassware 40s50s60s (Fourth Edition)	19.95
Stemware Identification, featuring Cordials, 1920s-1960s	24.95

Shipping is \$3.00 for first book and \$1.00 for each additional book

Salt & Pepper tops, Polycarbon plastic, will fit most regular sized Cambridge shakers such as Rose Point ftd and flat bottomed shakers. Also fit Heisey Rose, Saturn, Plantation, Crystolite and some Orchid. Fit some Anchor Hocking and Candlewick made from the same material used to make taillight lenses for autos.

Price: 1 to 9 pairs @ \$6 per pair - 10 or more pairs @ \$5 per pair

Shipping & Handling is \$3.00 per order on S&P tops

The Year In Poetry - 1996 by Paul White \$7.50

Send all orders to:

National Cambridge Collectors, Inc.

P. O. Box 416

Cambridge, Ohio 43725-0416





# ORDER NOW!

Pick Your  
Bookends Up  
At Convention!

You Really Need  
At Least A  
Pair of Each Color ...

Or — Order a Pair Now!

The Ohio flood of 1998 destroyed the National Cambridge Collectors' Museum. Due to our great loss we are offering the public an opportunity to help by purchasing a special edition of Scottie Dog bookends. These Scotties will be made from the original Cambridge Glass mold in a "Ruby" (Red) color, and will be clearly marked with the N.C.C. name, date of 2000 and Mosser logo. This color will be limited to production during the year 2000. The cost will be \$100 per pair. Shipping charge is \$10 per pair. If you are an Ohio resident, you will be subject to 6 1/2% sales tax (\$6.50 per set).

THANKS!!!!

Order blank

Name: (please print) \_\_\_\_\_

Address: \_\_\_\_\_ Phone \_\_\_\_\_ (\_\_\_\_) \_\_\_\_\_ - \_\_\_\_\_  
(UPS requires a street address) (Required if you give a P.O. Box)

City: \_\_\_\_\_ State: \_\_\_\_\_ Zip Code \_\_\_\_\_ - \_\_\_\_\_

No. of pair FROSTED (Blue)	_____	X	\$100.00	=	\$ _____	
No. of pair NON-FROSTED (Blue)	_____	X	\$100.00	=	\$ _____	Check # \$ _____
No. of pair NON-FROSTED (Ruby)	_____	X	\$100.00	=	\$ _____	
Shipping - \$10.00 per pair	_____	X	\$10.00	=	\$ _____	Amount \$ _____
Sales tax (if Ohio Resident)					\$ _____ (\$6.50 per pair)	Date _____
Total of order				=	\$ _____	

Make checks payable to: N.C.C., Inc.

Mail to: National Cambridge Collectors, Inc.  
P. O. Box 416  
Cambridge, OH 43725-0416

P.S. Those of you who are dealers and are buying the above Scotties for resale, and will not be paying the State of Ohio Tax, will have to sign a tax exempt form for such and all lines must be filled out completely to be exempt from paying the State of Ohio Sales Tax.

The undersigned hereby claims exemption to purchase of tangible personal property from the National Cambridge Collectors, Inc. on and after February 5, 1999 and certifies that this claim is based upon the purchaser's proposed use of the items purchased, the activity of the purchaser, or both as shown hereon: (Exemption Number from Rule #93.

\_\_\_\_\_  
(Purchaser's Name)

\_\_\_\_\_  
(Purchaser's Address)

\_\_\_\_\_  
(Purchaser's Activity)

\_\_\_\_\_  
(By - Signature and Title)

\_\_\_\_\_  
(Date Signed)

\_\_\_\_\_  
(Vendor's License Number)

# ~ GLASS ~ MARKETPLACE

## Classifieds

Check out our great advertising rates now!

**YOU NEVER KNOW WHO  
YOU MIGHT BE MISSING...**

**(see page 2 for details)**

### **WE CLEAN CLOUDY GLASS! SATISFACTION GUARANTEED**

*Yes, it is true* that we really can restore the interior of your cruet, vase, decanter and other internally etched items back to near original condition.

*We do not oil, wax or cover up the sickness in any way!* We actually remove it.

*No items are too sick to clean!* If we cannot clean an item to meet your satisfaction, the cleaning is FREE!

*Send no money up front.* When we return your item a bill will be enclosed for the postage and cleaning. If you are not satisfied, only the return postage is requested.

Most items clean in 7-8 weeks. All glass is handled and cleaned at your risk. Some very cloudy items may take several additional weeks.

Cocktail Shaker	\$35-\$40.00	Salt Shaker (1)	\$25.00
Cologne	\$27.50	Salt Shaker (2)	\$42.50
Cruet	\$27.50	Vases (under	\$30-\$35.00
10")	\$35-\$45.00		\$30.00
Decanter	\$25-\$35.00	Vinegar & Oil	\$35-\$40.00
Lavendar Jar		Water Bottle	

Ship to: Kim Carlisle & Associates  
28220 Lamong Road, Dept. C  
Sheridan, IN 46069  
(317) 758-5767

Have you visited our website lately?

Come see the changes!

**There's often something new...**

<http://www.cambridgeglass.org>

## **Bogart's Bed & Breakfast**

62 W. Main Street, New Concord  
New Concord lodging in 1830 Federal  
Style home, decorated with  
antiques throughout.



### **Bogart's Antiques**

7527 E. Pike, Norwich, OH  
*Quality Antiques Bought & Sold*

OWNERS: Jack & Sharon Bogart

740-826-7439 or 740-872-3514

[www.bedandbreakfastohio.com](http://www.bedandbreakfastohio.com) Reservations by phone



## **Stems Without Thorns**

As the world's largest supplier of old & new china, crystal, silver and collectibles, Replacements, Ltd. has more than 700 different patterns of Cambridge crystal.

And however much we enjoy selling pieces that were once thought irreplaceable, we love buying them as well. Thanks to people like you, our crystal inventory currently numbers in the hundreds of thousands, and the numbers keep growing every year.

So, if you've been unsuccessfully searching for that elusive piece of Cambridge — or any other type of fine crystal — call us for a free list of pieces available in your pattern. And, if you're looking to sell pieces you currently have, we can help you there, too.

## **REPLACEMENTS, LTD.**

*China, Crystal & Silver • Old & New*

**1-800-REPLACE  
(1-800-737-5223)**

1089 KROX ROAD,  
PO Box 26029, Dept. CB  
Greensboro, NC 27420  
[www.replacements.com](http://www.replacements.com)

## DEALERS



## DIRECTORY

NOTE: When writing to the dealers listed here, please enclose a SASE!

<p><b>DAUGHERTY'S ANTIQUES</b> Jerry and Shirley</p> <p>Antiques and Collectibles * Mostly Glass</p> <p>Shows &amp; Mail Orders 2515 Cheshire No 402-423-7426 Evenings Lincoln NE</p>	<p><b>YOU CAN ADVERTISE YOUR ANTIQUE SHOP HERE!</b></p>	<p><b>THE JONES GROUP</b> Cindy Jones</p> <p>Buy and Sell Cambridge Glass 650 Riverside Drive Sleepy Hollow, NY 10591 914-631-1656 or E-Mail Caprice0@aol.com</p>
<p>Milbra's Crystal Buy &amp; Sell Replacement and Matching Specializing in Cambridge</p> <p>Milbra Long (817) 645-6066 Fostoria Emily Seate (817) 294-9837 Heisey PO Box 784, Cleburne, TX 76033 and others E-mail longseat@flash.net</p>	<p><b>CRYSTALLINE COLORS</b> Buy, Sell, and Appreciate Cambridge and Other Elegant Glass I Love Cambridge</p> <p>Lynne R. Franks 216-661-7382 Ohio &amp; Western PA Antique Malls</p>	<p><b>Mary Jane's Antiques</b> Mary Jane Humes</p> <p>2653 Burgener Dr., Decatur, IL 62521 Glass: Cambridge, Fostoria, New Martinsville, Duncan Miller, Imperial and Early Pressed mjhumes@aol.com 217-422-5453</p>
<p><b>THE GLASS URN</b> 456 West Main Street, Suite G Mesa, AZ 85201 602-833-2702</p> <p>Mail Order Shows Open Shop</p> <p>CAMBRIDGE, FOSTORIA, HEISEY, ETC</p>	<p><b>YOU CAN ADVERTISE YOUR ANTIQUE SHOP HERE!</b></p>	<p><b>GATEWAY ANTIQUE MALL, INC.</b> JUST NW OF MINNEAPOLIS-ST. PAUL, MN Next to Super 8 in Rogers, MN (I-94/101 Intersection)</p> <p>85 Dealers 7 Days, 10-6 612-428-8286 ELAINE STORCK, OWNER/DIRECTOR</p>
<p><b>THE DEGENHART PAPERWEIGHT AND GLASS MUSEUM, INC.</b></p> <p>P O Box 186 Cambridge, Ohio 43725-0186 Intersection of US 22 &amp; I 77 Phone 740-432-2626</p>	<p><b>D &amp; D ANTIQUES</b> Columbus, Ohio</p> <p>Dick Slifko SHOWS ONLY</p>	<p><b>JAMESTOWN ANTIQUES</b> 16 E. Washington St., Jamestown, OH 45335 Rosepoint and Cambridge our Specialty</p> <p>Buy (937) 675-6491 Sell Susan and Larry Everett</p>
<p><b>THE GLASS CUPBOARD</b> P O. Box 652 West End, North Carolina 27376</p> <p>Marcia Ellis Cambridge 910-673-2884 Show</p>	<p><b>JUDY'S ANTIQUES</b> Judy Bennett 422 S. Ninth Street (Corner of Jefferson) Cambridge Ohio 43725 Bus. 740-432-5855 Res 740-432-3045</p> <p>CAMBRIDGE GLASS MY SPECIALTY</p>	<p><b>Horse'n Around Antiques</b> Kelvin and Heather Moore Exit 69 on Interstate 64 Woodlawn, IL 62898 e-mail hmoore@midwest.net TEL 618-735-9114</p> <p>Specializing in Cambridge and other Elegant Glass</p>
<p><b>FINDER'S ANTIQUE HOUSE</b> 3769 Highway 29 North Danville, VA 24540 (804) 836-6782 Cambridge-Heisey-Duncan-Fostoria</p>	<p><b>GREEN ACRES FARM</b> 2678 Hazelton Etna Rd., Pataskala, OH 43062 (State Route 310 North)</p> <p>Sat &amp; Sun 1-7 PM 740-927-1882 Antiques, Crystal Glass and Collectibles</p>	<p><b>CRYSTAL LADY</b> 1817 Vinton St Omaha NE 68108</p> <p>Bill, Joann, and Marcie Hagerty Bus 402-341-0643 Res 402-391-6730 Specializing in Elegant Glass &amp; Collectibles</p>
<p><b>YOU CAN ADVERTISE YOUR ANTIQUE SHOP HERE!</b></p>	<p><b>YOU CAN ADVERTISE YOUR ANTIQUE SHOP HERE!</b></p>	<p><b>PENNY COURT MALL</b> 637 Wheeling Avenue Cambridge, Ohio 100 Booths 15,000 sq. ft.</p> <p>HOURS Daily 10-6 Sunday Noon-5 Closed Easter, Thanksgiving, Christmas Call for Other Holiday Hours 740-432-4369</p>
<p><b>MICHAEL KRUMME</b> Cambridge and other elegant glassware</p> <p>(323) 857-0140 e-mail mkrumme@pacbell.net website http://www.glassshow.com</p> <p>PO Box 48225 Los Angeles CA 90048-0225 Send your want list</p>	<p><b>YOU CAN ADVERTISE YOUR ANTIQUE SHOP HERE!</b></p>	<p><b>MARGARET LANE ANTIQUES</b> 2 E Main St New Concord, OH 43762 Lynn Welker 740-825-7414</p> <p>Cambridge Glass Matching Service Hours Mon-Fri 10-12 AM 1-5 PM or by Appointment</p>
<p><b>ISAACS ANTIQUES</b> (740) 826-4015</p> <p>See our booths in Penny Court Mall in Cambridge and White Pillars Antique Mall at Rt. 40, one mile west of I-70 Norwich Exit #164</p>	<p><b>ALADDIN LAMP BOOKS</b> Free List Figurine Lamps Wanted Bill &amp; Treva Courter 3935 Kelley Rd Kevil, KY 42053 Phone/FAX 502-488-2116</p>	<p><b>DEXTER CITY ANTIQUE MALL</b> P O Box 70, Dexter City, Ohio 45727 (740) 783-5921</p> <p>Located on Ohio St. Rt. 821 Between Exits 16 &amp; 25 off I-77 Just 30 min. South of Cambridge, Ohio</p>

# AUCTION

All Cambridge Glass and Related Items

from the Private Collection of

***Phyllis and (the late) Bill Smith***

**Thursday, June 22, 2000**

**10:00 a.m.**

Doors Will Open at 9:00 a.m.

Pritchard Laughlin Civic Center — In the Galleria  
Glenn Highway (US 40 W at I-70) Cambridge, OH

**FOOD WILL BE AVAILABLE**

Auctioneer: Craig Connelly

Owner: Phyllis Smith

Auction Catalogs will be available - Send 33-cent SASE (#10 business envelope)  
Phyllis D. Smith, 4003 Old Columbus Road, Springfield, OH 45502-8802  
Phone: (937) 323-3888

National Cambridge Collectors Inc  
PO Box 416  
Cambridge OH 43725-0416

<http://www.cambridgeglass.org>  
e-mail: [NCC\\_Crystal\\_Ball@compuserve.com](mailto:NCC_Crystal_Ball@compuserve.com)

FIRST CLASS MAIL  
U.S. POSTAGE  
PAID  
PERMIT NO. 1  
CAMBRIDGE, OH

## FIRST CLASS MAIL

*Membership Renewal Notice*

**If the date on your address label is 6-2000,  
this is your LAST ISSUE of the Crystal Ball.**  
Please take a moment and renew now. Thank you!