



Cambridge Crystal Ball

Published monthly by National Cambridge Collectors, Inc.
to encourage and report the discovery of the elegant and boundless product of the
Cambridge Glass Company of Cambridge, Ohio

Issue No. 336

April 2001

2001 NCC Auction a Success



The 2001 National Cambridge Collectors, Inc. Benefit Auction on March 3, 2001, at the Pritchard Laughlin Civic Center in Cambridge, Ohio was a success!

See the related story on page 5...

Inside This Issue:

Let's Catch Up!
2001 NCC Auction a Success
Museum Design & Display Committee Update
Convention Update and Event Schedule
Auction Results
"New for 1939"

Cambridge Crystal Ball

Official publication of National Cambridge Collectors Inc., a non-profit corporation with tax exempt status. Published once a month for the benefit of its members. All rights reserved; reproduction in whole or in part without written permission of NCC and the author is prohibited.

Membership is available for individual members at \$20.00 per year and an additional \$3.00 for associate members (12 years of age and older, residing in the same household). Of the master member dues, \$12.00 is credited to a one-year subscription to the *Crystal Ball*. All members have voting rights, but only one *Crystal Ball* per household. **Multi-year memberships are available: 2 years for \$38.00, 3 years for \$56.00.**

2000-2001

OFFICERS AND COMMITTEE CHAIRPERSONS

President	Richard D. Jones
Vice President	Tarzan Deel
Secretary	Sharon Miller
Treasurer	Charles Upton
Sergeant-at-Arms	Michael Neilson
Acquisitions	Lynn Welker
Budget & Finance	Dennis Snyder
By-Laws	Bud Walker
Corresponding Secretary	Charles Upton
Endowment	George Stamper
Facilities	Carl Beynon, Joe Miller
Grants and Fundraising	Sharon Miller
Long-Range Planning	Mike Strebler
Member Services	George Stamper
Membership	Jeff Ross
Museum	Cindy Arent
Nominating	Tarzan Deel
Non-Glass Items	Carl Beynon, Bill Hagerty
Program	David Ray
Projects	Bill Hagerty
Publications	Mark A. Nye
Publicity	Cynthia A. Arent
Study Group Advisor	Ken Filippini
Technology	Linda Roberts
WebMaster	Linda Roberts
2001 Convention	Mark A. Nye
2001 Auction	Squeek and Dorothy Rieker, Lynn Welker
2001 Glass Show	Mary Beth Hackett, Joy McFadden
2001 Glass Dash	Larry and Susan Everett
<i>Crystal Ball</i> Editor	Lorraine Weinman
<i>Crystal Ball</i> Circulation Directors ...	Lisa and Mike Neilson

Internet website: www.cambridgeglass.org

WATCH FOR THE OPENING OF THE NEW NATIONAL CAMBRIDGE COLLECTORS MUSEUM ON SOUTH NINTH STREET IN CAMBRIDGE, OHIO.

THE TEMPORARY NCC MUSEUM IS LOCATED ON WHEELING AVENUE IN PENNY COURT MALL IN DOWNTOWN CAMBRIDGE, OHIO.

ADVERTISING RATES

Display Rates (camera ready ads preferred)

Unit	Members	Non-Members
Full Page	\$45.00	\$60.00
3/4 Page	\$35.00	\$50.00
1/2 Page	\$25.00	\$35.00
1/4 Page	\$15.00	\$25.00
1/8 Page	\$10.00	\$15.00

(\$5.00 additional if a photograph is included in display ad)

Classified Rates

10 cents a word \$2.00 minimum

Abbreviations and initials count as words. Type sizes cannot be mixed in classified ads. **Payment in full must accompany all ad copy.** Contact Editor for copy assistance.

Dealer Directory

Six Line Maximum \$24.00 for 12 month contract
Also included - Listing on our Internet site at:
www.cambridgeglass.org

Cambridge *Crystal Ball* assumes no responsibility for items advertised and will not be responsible for errors in price, description, or other information.

Advertising copy, letters, articles, must be received by the 5th of preceding month to be considered for publication in the next issue.

Please address all correspondence (include SASE) to:
(or E-Mail NCC_CrystalBall@yahoo.com)

**National Cambridge Collectors, Inc.
P.O. Box 416
Cambridge, OH 43725-0416**

President Rick Jones	914-631-1656
Vice President Tarzan Deel	540-869-3949
Secretary Sharon Miller	740-685-6513
Membership	email: jaross@cambridgeoh.com
NCC Museum: Phone	740-432-4245
Fax	740-439-9223

Please notify us immediately of any address change.

Opinions or information stated in any signed article or letter printed in the *Crystal Ball* are those of the author and may not agree with National Cambridge Collectors, Inc. The Editor reserves the right to refuse and to edit any material submitted for publication to conform to the editorial style of the *Crystal Ball*. Members are encouraged to write to NCC and the *Crystal Ball* sharing their knowledge and questions.

President's Message



Let's Catch Up!

There's a lot to catch up on in Cambridge land. We are coming off what we believe to be the most successful Benefit Auction in the club's history. A typical sale generates \$34-36,000 in gross proceeds. This year's sale was \$42,000, based on the stats I heard that Saturday night.

Our thanks to all consignors, attendees, bidders, and the volunteers without whose help we could not pull off such a smooth event. Our auction chairs of Dorothy and Squeek Rieker, plus major domo Lynn Welker, coordinated a fine mix of interesting glass that featured something for everyone.

Our longtime auctioneer, Craig Connelly is the best! His wife, Lynn, and associate, John, ably assist him. They keep the auction entertaining and have the club's interest at heart.

It seemed to me that we had a lot of new faces at the auction this year including collectors from Texas and Florida. This is a great event that all of you should consider attending next year. It did seem like mail bidding was down a little this year. Please remember that you don't have to be at the auction to participate. Read your January *Crystal Ball* carefully to find out how you can submit mail bids on this great glass.

Speaking of great glass, plans proceed forward with our new Museum. The Design and Display Committee labored long and hard to develop a sensible phased-in plan. They listened to a lot of member feedback and submitted a responsible and balanced plan. This is a very tough job as everyone has an opinion and it is difficult to reach consensus. This national team is to be commended.

The NCC Board approved a Phase One cabinet plan along the perimeter of the building. They also approved carpeting the most public areas of the facility. We are still very hopeful to have at least a partial opening by Convention.

The response to our showcase-naming program has been nothing short of sensational. Out of what we believe to be a 40 showcase availability, we have as of this writing, in the neighborhood of 25 pledges. One couple pledged six showcases! Also, another couple has pledged \$5,000 that will be directed to our reception area/welcome center. Two of our study groups have made showcase gifts as

well as three regional depression glass clubs. We appreciate every gift, large or small. It takes a lot of effort, time, and money to realize our dream of a first-class museum. As plans proceed, we will turn our attention to the research area and our historical displays. There will be many more ways for members to make a difference!

Also at the March meeting, we had a terrific get together of multiple study groups, chaired by Ken Filippini. They shared many ideas on club affairs, information sharing, education, cooperation among study groups, and how to make "membership" a priority. It was a great first step and all attendees are eager to continue the dialogue.

We have a new Program Committee chairperson, David Ray. He succeeds Bill Hagerty who has done a great job over the last few years. Bill has organized wonderful November meeting programs including sessions on Cambridge animals, candy containers, swans, and glass companies. Our November meeting is one of the best kept secrets of NCC and should have much higher attendance. These programs are great! David will have news shortly about a great program for the first week in November this year. Mark it in your calendar now!

Mark Nye has been very busy. He's putting together the Convention plan and has still had time to finish more of his new series of '30s etching books like Elaine and Wildflower. Additionally, he just finished a new etchings book on the "uncatalogued etches." This new NCC book will be available at Convention time. Look for more news in the *Crystal Ball*.

We spent a lot of time talking about the *Crystal Ball* at our meetings. We want it to be of great value to you. To that end, we need your help with ideas and article submissions. This is *your* club, please help us make it as good as it can be!

As spring begins, let's all try to make plans to gather in Cambridge the fourth week in June. It is a great fellowship opportunity, a chance to make new friends, and a great learning experience. We've got a lot to catch up on!

Rieker

Learn the Art of Glass Making!

Heisey Collectors of America offers monthly paperweight making classes and two-day glass blowing workshops at the HCA Glass Studio, located within Newark's Institute of Industrial Technology.

Paperweight making classes take place the second Saturday of every month from 9 a.m. until 12 noon and allow each participant to design and create his/her own paperweight. Cost is \$40. Private classes for groups of 5-8 may also be arranged.

The two-day glass blowing workshops take place the fourth weekend of every month (third weekend in November and December) from 9 a.m. to about 1 p.m. and introduce participants to the basics of glassblowing and allow them to create simple vessels. Cost is \$135.

Space is limited, pre-registration and prepayment are required. To register or for more details, call (740) 345-2932.



Even with all the wonderful glass available at the NCC Auction, there was amazing glass in the Show & Tell session on Friday evening. Watch next month for some pictures and descriptions.

MAKE PLANS NOW!!

Tentative 2001 Calendar Planning

June 21-24

2001 National Cambridge Collectors' Convention
"Mardi Gras/Carnival"
Pritchard Laughlin Civic Center
Cambridge, Ohio

June 22-24

NCC Glass Show and Sale
Pritchard Laughlin Civic Center
Cambridge, Ohio

June 23

"Glass Dash" ("flea" market)
Beech Grove Family Development Center
Cambridge, Ohio

June 24

NCC Annual Meeting
Pritchard Laughlin Civic Center
Cambridge, Ohio

August 25 (tentative)

August Quarterly Meeting
To Be Announced
Cambridge, Ohio

November 3 (tentative)

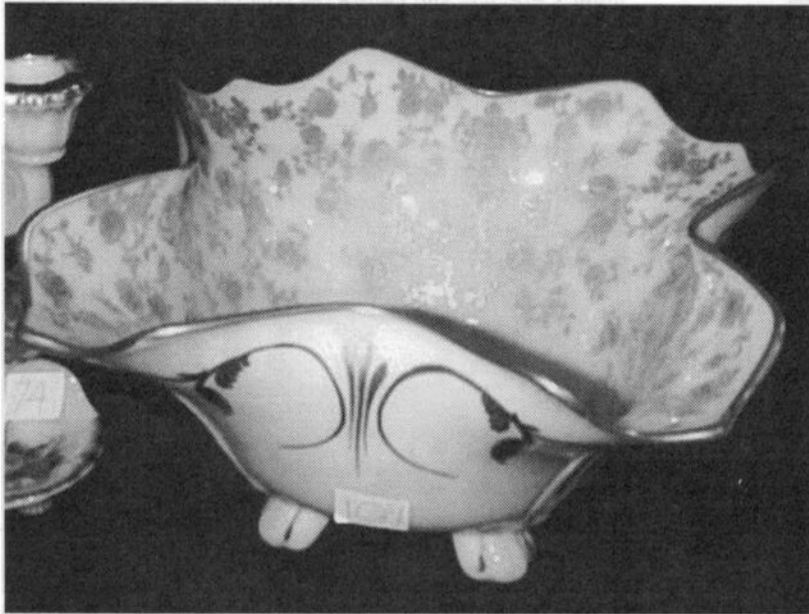
November Quarterly Meeting
Education Program
To Be Announced
Cambridge, Ohio

Please share your **RECENT FINDS** with us!
We would love to see your finds...and hear
about them as well.

Send photos and stories to:
Crystal Ball—Recent Finds
c/o NCC
PO Box 416
Cambridge, Ohio 43725-0416

2001 NCC Auction a Success

by Alex Citron



**PICTURED ABOVE IS A CROWN TUSCAN BOWL
WITH GOLD-ENCROUTE ROSEPOINT**

Nearly 200 eager Cambridge collectors gathered at the Pritchard Laughlin Civic Center on March 3 for the annual NCC Auction. Almost 400 lots of beautiful Cambridge glass were offered, including many unusual and hard-to-find pieces. The bidding was intense and the friendly competition spirited as auctioneer Craig Connelly and his staff netted sales of nearly \$42,000.

As in the past, a commission was collected on each lot sold, yielding about \$6,200 after expenses for the NCC. This year, an unprecedented number of lots had been donated to the NCC by the consigners. The auction prices of these lots went entirely to the NCC; a total of \$712.50 for the club.

As in years past, there were some bargains to be found, but clamoring for the more unusual pieces of Cambridge glass made for some big numbers. This year's champion was a fabulous gold-encrusted Portia etch Carmen sandwich plate (#3400/8), which sold for \$1,150. Other spectacular pieces included a Crystal Tally-Ho goblet with an unknown cutting, an Amber 13-inch draped lady flower frog, a Violet Mt. Vernon goblet, a Primrose console set with gold and black

decoration, a Royal Blue nude stem brandy, a very rare #1528 Mandarin Gold vase with the regal lion etch, a #1222 Amber turkey with cover, a #3065 Crystal goblet with blue enamel Willow scene etch, a #512 Ivory Rose Lady, and a #29 Crown Tuscan Everglades oval vase.

This year's auction featured a large number of nude stems – about two dozen in all – and many bidders were happy to see the prices a bit lower than in recent years. None of the nudes realized over \$500, for example, a level reached by nudes in both 1999 and 2000. Several nude stems, however, sold for well over \$300.

The 2001 Auction featured a fine array of silver-encrusted Ebony pieces, some beautiful and unusual Crown Tuscan, a large number of Moonlight Blue Caprice pieces and representations of at least 16 etches. Near Cut collectors also had many pieces from which to choose, including a rare Turquoise "Queen" salt and pepper with tray. Crystal Caprice was less well represented than at previous auctions.

The 2001 Auction committee, Squeek Rieker, Dorothy Rieker, and Lynn Welker, did an exceptional job as usual. Sensitive to some concerns about condition in last year's auction, the committee carefully selected from about 600 consigner submissions to make up this year's auction of 391 lots. This painstaking work resulted in a spectacular array of glass, which was displayed grandly. An impressive variety of Cambridge lines, etches, cuttings, and colors were represented. There was truly something for every collector.



Special Article # 62 Primrose 10" Tall Comport and Pair #70 8" Candlesticks Decorated with Black Design and Gold Trim.



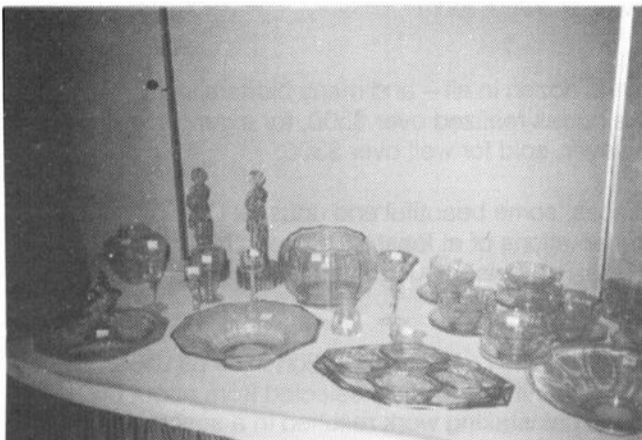
Prospective buyers were able to inspect the glass at Friday night's Preview and before the auction on Saturday morning.



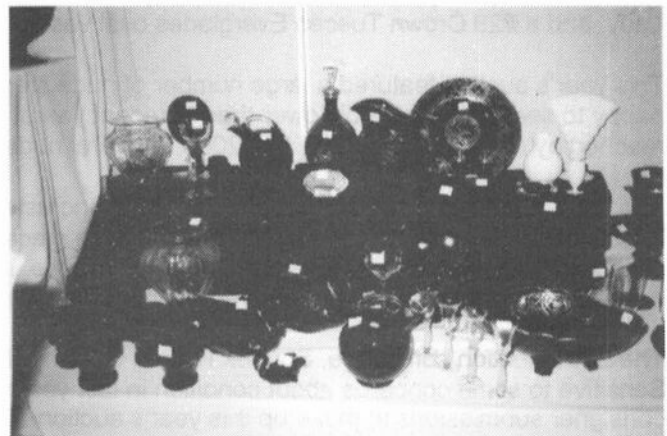
There was a good selection of items in Carmen, Rubina, and Royal Blue.



Crown Tuscan was well represented. Most were gold encrusted or had Charleton decoration.



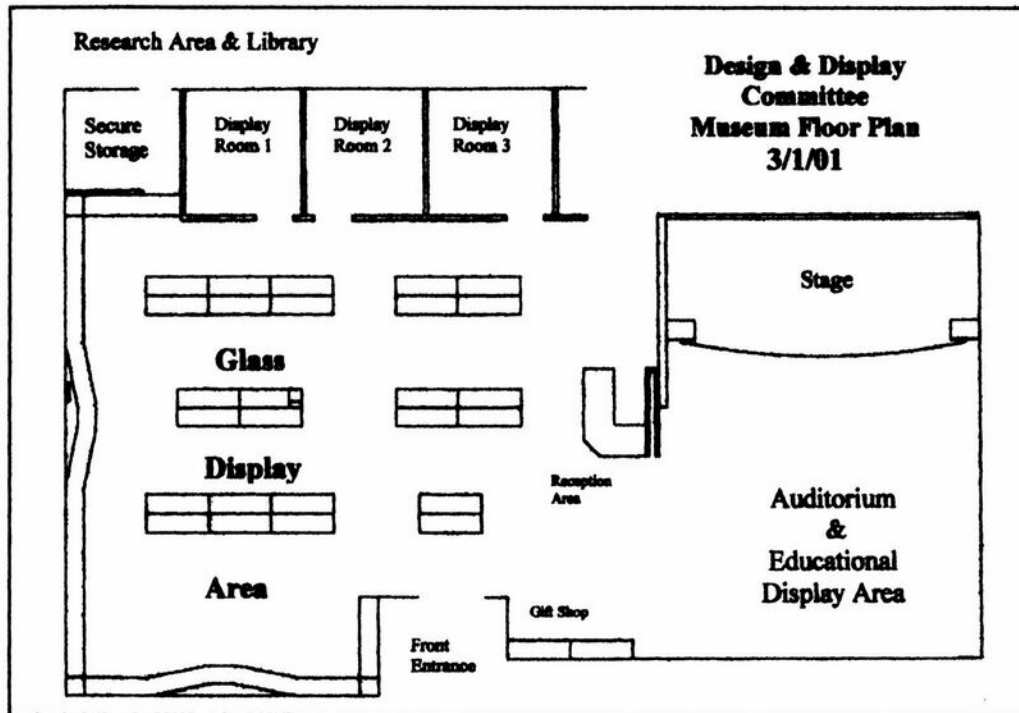
A good selection of Light Emerald glass was present.



Many pieces of Ebony were available...several pieces had beautiful silver overlay.

Museum Design & Display Committee Update

by Cindy Arent



The Design and Display Committee has met several times during the past months. At the January 27 meeting, the group developed a two-phase plan to present to the NCC Board of Directors for approval. The committee has made every effort to incorporate the many ideas voiced by the NCC membership.

The Board approved Phase I of the proposal at the March meeting. The following are included in this initial phase: built-in wall cases around the front and side walls, carpeting, and the reception and gift shop areas.

The committee recommended the built-in wall unit as opposed to lining the walls with individual cases. It was felt that the unit would compliment and add variety as well as texture to the display area. This option allows for the use of material from the previous museum. The unit will include:

- Height – 84 inches
- Depth – 18 inches (24 inches along the short wall)
- Xenon lighting in the top
- Vertical T6 slim fluorescent lighting with remote ballast
- Wood trim to match center cases
- Glass Shelving from the wall units at the Rte. 40 museum

Carpeting is also included in Phase I. The display area, education/auditorium, and hallways will be covered. Two estimates were evaluated by the committee for quality, cost, and service. It was found to be more cost effective to carpet the auditorium as well as the display area because of the significant discount provided when ordering a greater number of square yards.

The reception area and gift shop are the final portion of Phase I, but are still in the development phase. We want to be sure that we create a workable area that blends in with the design of the display area. The gift shop will be located between the display and educational areas.

Phase 2 will include the center display cases. The committee is working with Dave Desens of Showcase Designs to complete this area.

The museum owned glass collection will be moved from the storage building to the new museum as soon as the wall unit is finished and the carpeting has been installed. The inventory is presently listed on Microsoft Excel, however we are currently reviewing the Past Perfect Museum software package for possible use at the new facility.

The Design and Display Committee would like to thank all of you for your input and ideas. We are looking forward to seeing you in June!

2001 NCC CONVENTION MOTEL INFORMATION

All of the motels are located in Cambridge at Exit 178, Ohio Route 209, off of Interstate 70.

BEST WESTERN CAMBRIDGE

1945 Southgate Parkway
740-439-3581
Approximately 50 rooms available
\$55 single or double

BUDGET HOST—DEER CREEK

2325 Southgate Parkway
740-432-6391
Approximately 50 rooms available
\$45.95 single/\$52.95 double

TRAVELODGE OF CAMBRIDGE

State Route 209 North
740-432-7375
\$55 single or double

AMERIHOST CAMBRIDGE

State Route 209 South
740-439-1505
\$65 single or double
(includes continental breakfast)

HOLIDAY INN CAMBRIDGE

2248 Southgate Parkway
740-432-7313
\$79 (includes breakfast)

COMFORT INN CAMBRIDGE

Southgate Parkway
740-435-3200
\$55 single or double

DAYS INN CAMBRIDGE

2328 Southgate Parkway
740-432-5691
\$64/weekdays, \$81/weekends

BOGART'S BED & BREAKFAST

62 West Main Street
New Concord, OH
740-872-3514
740-826-7439
Call for rates

ATTENTION NCC MEMBERS

IMPORTANT CONVENTION UPDATE

OHIO CHAUTAUQUA

If you are planning on attending the 2001 National Cambridge Collectors, Inc Convention, **MAKE YOUR MOTEL RESERVATIONS NOW!**

There will be a very large festival in town the same week and hotels are filling up fast. Book your room now. Many people are expected to be in Cambridge during Convention week.

OHIO CHAUTAUQUA will be touring the state with the theme of "Buckeyes in the Civil War." It will feature living history presentations. The Chautauqua tent will be set up in Cambridge City Park. The community plans to host a Civil War Encampment throughout the week. In addition to the presentations of historical figures instrumental to the Civil War history, there will be special programs for people of all ages.

At their website (www.ohiohumanities.org/news/host.htm) they have listed the June 21-23 Cambridge Glass Show as an "added bonus" for their audiences.

Cambridge promises to be a very busy place at Convention time so

PLEASE MAKE YOUR RESERVATIONS NOW!!

To obtain the quoted rates, you must specify you are attending the National Cambridge Collectors Convention. Most places will recognize Cambridge Glass Convention faster than they will NCC Convention. As always, it is strongly recommended reservations be made as soon as possible. In every instance, there is a limited number of rooms available at the stated rate. When these are booked, you may have to pay a higher rate.

MAKE YOUR RESERVATIONS EARLY — SEE YOU IN JUNE

2001 Convention Update

by Mark Nye, Convention Chairman

If you have not already done so, make your motel reservations as soon as you finish reading this. There is a very good possibility there will be a shortage of motel rooms in Cambridge and the surrounding area during Convention week due to a Chautauqua festival taking place that week. [see page 8 for related article about Chautauqua Ohio] Don't wait any longer, make those reservations today.

Speaking following the annual banquet on Saturday night will be Bruce Dooley, a long time Carnival Glass collector, who will be presenting a program on Carnival Glass. More on Mr. Dooley and his program in a future issue.

The Miami Valley Study Group will be presenting a program on the Everglades pattern. There will also be a program on Nearcut, and tentatively, a follow-up seminar to last year's highly popular "Buying Glass in the 21st Century."

Mosser Glass and Boyd's Crystal Art Glass factories will be open for tours all week. Members are urged to visit the factories at their convenience any day during the week. For those attending their first convention, directions to the factories will be found in the registration packets as well as factory hours. Conventioneers arriving early are also urged to visit the Fenton factory, an easy drive from Cambridge.

As in the past, we are accepting donations to defray the cost of printing the Convention Souvenir Booklet. Names of groups and individuals making contributions are published on the reverse cover of the booklet.

The Convention Registration Form will be in the May issue. If you are planning to attend the 2001 Convention, it must be returned by the date specified on the form.

Printed on page 10 in this issue is a tentative event schedule. While no dramatic change is anticipated, times for some events may change. The final schedule will be in your convention packet and posted at the Civic Center. Leave the one in the *Crystal Ball* there and at home.

See you in June.



16th annual spring
EASTERN NATIONAL ANTIQUES SHOW & SALE

April 27, 28, 29, 2001
Friday 11 a.m.-7 p.m. • Saturday 11 a.m.-6 p.m. • Sunday 11 a.m.-5 p.m.
STATE FARM SHOW COMPLEX, EXIT 23, I-81 • HARRISBURG, PA

The Premiere Glass Show in America

• **FEATURING** •
CUT, ART & PRESSED GLASS • PORCELAINS • CHINA • POTTERY
Over 300 Booths of Quality Antiques & Selected Collectibles including:
Silver • Lamps • Antique & Estate Jewelry • Primitives • Folk Art
Toys & Dolls • Prints • Postcards • Books • Bronzes • Quilts • Linens

• **SPECIAL EXHIBITS & SERVICES** •
National Cambridge Collectors Club • Old Morgantown Glass Collectors
Festoria Glass Society of America, Inc.
Early American Pattern Glass Society • H.C. Fry Glass Society
Sylvio's Glass Repair • Collectibles Insurance Agency
Antiquet.com • Jewelry Cleaning • Metal Polish Clinic

ADMISSION \$6.00 (\$5.50 with card—good all 3 days) • FREE PARKING

**NATIONAL CAMBRIDGE COLLECTORS, INC.
28th ANNUAL CONVENTION - JUNE 2001
TENTATIVE EVENT SCHEDULE**



WEDNESDAY, JUNE 20

9:00 a.m.	Local Glass Factory Tours	Boyd and Mosser Factories
6:00 p.m.	Dutch Treat Dinner	Site to be announced

THURSDAY, JUNE 21

9:00 a.m.	Registration Desk Opens	Pritchard Laughlin Civic Center
10:00 a.m.	Local Glass Factory Tours	Boyd & Mosser Factories
10:00 a.m.	Smith Auction (Not sponsored by NCC)	Pritchard Laughlin Civic Center Galleria
4:00 p.m.	Orientation Session - First Timers	Conference Room - Pritchard Laughlin Civic Center
7:00 p.m.	Get Acquainted Picnic (full picnic meal served)	Cash Bar Pool Side - Best Western Motel

FRIDAY, JUNE 22

8:00 a.m.	Continental Breakfast	NCC Museum
8:30 a.m.	Local Glass Factory Tours	Boyd and Mosser Factories
9:00 a.m.	Registration Desk Opens	Pritchard Laughlin Civic Center
1:00 p.m.	Program -Everglades	Conference Room - Pritchard Laughlin Civic Center
2:00 p.m.	Program - NearCut	Conference Room - Pritchard Laughlin Civic Center
4:30 p.m.	Glass Show Opens	Exhibit Hall - Pritchard Laughlin Civic Center
7:30 p.m.	Convention Chairman's Reception - Cash Bar	Galleria - Pritchard Laughlin Civic Center
8:00 p.m.	Friday Night Supper/Costume Party	Galleria - Pritchard Laughlin Civic Center
9:00 p.m.	Mini-Auction	Galleria - Pritchard Laughlin Civic Center

SATURDAY, JUNE 23

7:00 a.m.	Glass Dash Opens	Beech Grove Family Development Center
11:00 a.m.	Glass Show Opens	Exhibit Hall - Pritchard Laughlin Civic Center
1:00 p.m.	Seminar	Conference Room - Pritchard Laughlin Civic Center
3:00 p.m.	Glass Identification - Lynn Welker	Conference Room - Pritchard Laughlin Civic Center
4:00 p.m.	Bring & Brag - Lynn Welker	Conference Room - Pritchard Laughlin Civic Center
6:30 p.m.	President's Reception - Cash Bar	Galleria - Pritchard Laughlin Civic Center
7:00 p.m.	Annual Banquet	Galleria - Pritchard Laughlin Civic Center
8:30 p.m.	Speaker - Bruce Dooley "Carnival Glass"	Theater - Pritchard Laughlin Civic Center
10:00 p.m.	Pool Side Party (BYOB)	Budget Host Deer Creek Motel

SUNDAY, JUNE 24

8:30 a.m.	Buffet Breakfast	Galleria - Pritchard Laughlin Civic Center
9:30 a.m.	28th Annual Meeting NCC, Inc.	Galleria - Pritchard Laughlin Civic Center
11:00 a.m.	Glass Show Opens	Exhibit Hall - Pritchard Laughlin Civic Center
1:30 p.m.	Cambridge Glass Co. Workers Reunion	Pritchard Laughlin Civic Center

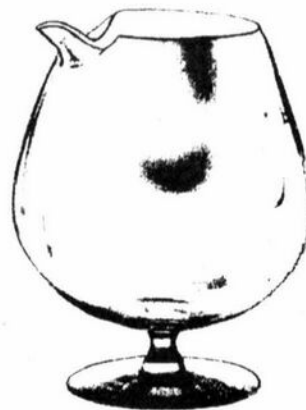
2001 Benefit Auction Results - Prices Per Lot

1.	30.00	53.	55.00	105.	80.00	156.	105.00	208.	300.00	260.	40.00
2.	25.00	54.	40.00	106.	50.00	157.	45.00	209.	50.00	261.	210.00
3.	25.00	55.	115.00	107.	30.00	158.	35.00	210.	20.00	262.	55.00
4.	25.00	56.	60.00	108.	75.00	159.	105.00	211.	410.00	263.	80.00
5.	12.50	57.	25.00	109.	200.00	160.	150.00	212.	145.00	264.	60.00
6.	50.00	58.	25.00	110.	50.00	161.	65.00	213.	100.00	265.	30.00
7.	70.00	59.	25.00	111.	65.00	162.	37.50	214.	350.00	266.	80.00
8.	45.00	60.	45.00	112.	25.00	163.	55.00	215.	70.00	267.	590.00
9.	60.00	61.	75.00	113.	50.00	164.	255.00	216.	125.00	268.	55.00
10.	105.00	62.	10.00	114.	215.00	165.	120.00	217.	95.00	269.	62.50
11.	85.00	63.	20.00	115.	130.00	166.	180.00	218.	75.00	270.	130.00
12.	20.00	64.	105.00	116.	92.50	167.	45.00	219.	85.00	271.	20.00
13.	60.00	65.	45.00	117.	145.00	168.	85.00	220.	65.00	272.	135.00
14.	105.00	66.	65.00	118.	75.00	169.	325.00	221.	125.00	273.	55.00
15.	20.00	67.	65.00	119.	45.00	170.	170.00	222.	50.00	274.	240.00
16.	45.00	68.	30.00	120.	75.00	171.	40.00	223.	50.00	275.	450.00
17.	55.00	69.	85.00	121.	45.00	172.	20.00	224.	65.00	276.	85.00
18.	50.00	70.	75.00	122.	25.00	173.	95.00	225.	110.00	277.	60.00
19.	75.00	71.	20.00	123.	65.00	174.	725.00	226.	510.00	278.	235.00
20.	25.00	72.	30.00	124.	35.00	175.	150.00	227.	65.00	279.	60.00
21.	210.00	73.	160.00	125.	70.00	176.	120.00	228.	60.00	280.	70.00
22.	50.00	74.	25.00	126.	350.00	177.	170.00	229.	285.00	281.	60.00
23.	20.00	75.	350.00	127.	75.00	178.	480.00	230.	1150.00	282.	185.00
24.	75.00	76.	65.00	128.	35.00	179.	310.00	231.	55.00	283.	110.00
25.	45.00	77.	7.50	129.	30.00	180.	250.00	232.	365.00	284.	25.00
26.	35.00	78.	80.00	130.	110.00	181.	140.00	233.	90.00	285.	200.00
27.	35.00	79.	70.00	131.	35.00	182.	50.00	234.	155.00	286.	350.00
28.	35.00	80.	90.00	132.	75.00	183.	25.00	235.	100.00	287.	210.00
29.	80.00	81.	45.00	133.	7.50	184.	115.00	236.	170.00	288.	450.00
30.	135.00	82.	85.00	134.	35.00	185.	215.00	237.	165.00	289.	275.00
31.	40.00	83.	65.00	135.	75.00	186.	85.00	238.	330.00	290.	105.00
32.	100.00	84.	700.00	136.	110.00	187.	65.00	239.	260.00	291.	225.00
33.	65.00	85.	20.00	137.	55.00	188.	17.50	240.	300.00	292.	75.00
34.	50.00	86.	125.00	138.	180.00	189.	85.00	241.	30.00	293.	100.00
35.	295.00	87.	75.00	139.	125.00	190.	270.00	242.	40.00	294.	55.00
36.	40.00	88.	35.00	140.	225.00	191.	210.00	243.	45.00	295.	75.00
37.	20.00	89.	40.00	141.	105.00	192.	50.00	244.	35.00	296.	135.00
38.	105.00	90.	195.00	142.	180.00	193.	45.00	245.	12.50	297.	65.00
39.	85.00	91.	50.00	143.	30.00	194.	60.00	246.	40.00	298.	60.00
40.	170.00	92.	35.00	144.	275.00	195.	75.00	247.	65.00	299.	135.00
41.	85.00	93.	70.00	145.	190.00	196.	35.00	248.	75.00	300.	85.00
42.	450.00	94.	310.00	146.	65.00	197.	35.00	249.	20.00	301.	40.00
43.	40.00	95.	205.00	147.	150.00	198.	145.00	250.	150.00	302.	70.00
44.	35.00	96.	275.00	148.	90.00	199.	45.00	251.	25.00	303.	95.00
45.	370.00	97.	145.00	149.	85.00	200.	195.00	252.	85.00	304.	55.00
46.	25.00	98.	230.00	150.	45.00	201.	95.00	253.	40.00	305.	65.00
47.	130.00	99.	115.00	150A.	37.50	202.	105.00	254.	65.00	306.	70.00
48.	95.00	100.	630.00	151.	45.00	203.	65.00	255.	90.00	307.	95.00
49.	20.00	101.	425.00	152.	55.00	204.	65.00	256.	375.00	308.	150.00
50.	10.00	102.	80.00	153.	165.00	205.	210.00	257.	42.50	309.	65.00
51.	195.00	103.	40.00	154.	105.00	206.	110.00	258.	45.00	310.	35.00
52.	105.00	104.	175.00	155.	85.00	207.	20.00	259.	205.00	311.	30.00

(Continued on page 12)



7801 64 oz.
Brandy Inhaler



1661 Martini
Cocktail Shaker



3600 2pc
Cocktail Icer



Pristine #18 2pc
Cocktail Icer

(RESULTS—continued from page 11)

2001 Benefit Auction Results Continued- Prices Per Lot

312.	30.00	326.	95.00	340.	105.00	354.	87.50	368.	15.00	382.	10.00
313.	60.00	327.	25.00	341.	105.00	355.	50.00	369.	15.00	383.	72.00
314.	135.00	328.	30.00	342.	45.00	356.	5.00	370.	52.50	384.	60.00
315.	160.00	329.	84.00	343.	12.50	357.	25.00	371.	45.00	385.	60.00
316.	395.00	330.	40.00	344.	55.00	358.	120.00	372.	45.00	386.	75.00
317.	40.00	331.	60.00	345.	20.00	359.	25.00	373.	15.00	387.	375.00
318.	70.00	332.	25.00	346.	60.00	360.	55.00	374.	67.50	388.	90.00
319.	50.00	333.	20.00	347.	40.00	361.	35.00	375.	20.00	389.	260.00
320.	35.00	334.	115.00	348.	35.00	362.	35.00	376.	45.00	390.	170.00
321.	80.00	335.	165.00	349.	50.00	363.	95.00	377.	45.00	391.	195.00
322.	7.50	336.	65.00	350.	87.50	364.	195.00	378.	25.00		
323.	85.00	337.	25.00	351.	15.00	365.	55.00	379.	122.50		
324.	35.00	338.	85.00	352.	40.00	366.	15.00	380.	15.00		
325.	150.00	339.	75.00	353.	30.00	367.	35.00	381.	10.00		

New for 1939

by Mark Nye

It appears the majority of communications known as Circular Letters used by the Cambridge Sales Department to communicate with its agents were lost, either through normal business practices or at the time the company closed. We do have a number from the late 1930s as well as a few from the late 1920s and early 1930s. Circular Letters were used primarily to inform the agents of price changes, specials, sales aids, and new items. Regrettably, many of those that do survive are missing the cover page, as it was on this page reasons for the price change, a description of the revised item, or other such information would have been provided. Fortunately for us today, some of the letters were just one page in length and thus we have all the information.

One such letter was originally distributed on March 2, 1939

"To All Agents:

Sample is being sent you of the new #3600 2 pc. Cocktail Icer.

This is the same shape as the Pristine #18 with the exception that it is made with the regular cast foot that is used on all lines of Stemware. By making it with this foot, instead of the heavy patented foot that is on the #18 you can now use it with any line of Stemware. There has been more or less objection to the heavy foot—the claim being that it does not match up correctly in other lines of stemware.

Add to 3600 and 3625 Stemware price list pages:

	Plain	E/Chantilly	
3600	2 pc. Cocktail Icer	15.00	22.50 per doz.

Add to 3675 Stemware price list page:

	Plain	E/Blossom Time	
3600	2 pc. Cocktail Icer	15.00	22.50 per doz.

Cancel from those three pages:

18 2 pc. Cocktail Icer, plain and etched, as it will not be furnished in Chantilly and Blossom Time.

Add to Unusual Service Accessories price list

3600 2 pc. Cocktail Icer @ \$15.00 doz."

Another 1939 letter, this one dated September 15, announced a new brandy inhaler.

"To All Agents:

We have produced a new Brandy Inhaler, larger than the one we made in the past. This will be known as the #7801 64 oz. The list price is \$26.25 per dozen. Add this to 7801 Stemware price list along with the two other Brandy Inhalers.

This will also be made into a Martini Cocktail Shaker #1661 in the same manner as the #1660 as per C/L #176, 1939. The list price will be \$26.25 per dozen as shown on the Cocktail Mixer and Shakers price list C/L #176.

Samples of each are being sent to you.

The large Brandy Inhaler #7801 64 oz. is correct to use as a flower vase. If you will present it in this way to the stores, we think you will be able to sell considerable of them."

Making the brandy inhaler into the Martini cocktail shaker was simply a matter of hand forming a spout on one side while the glass was still hot and soft. The older inhalers with capacities of 23 and 6 ounces are simply smaller versions of the new ones as was the 1660 cocktail shaker at 23 ounces.

Also from 1939 comes this announcement issued on August 29.

"To All Agents:

We have had a great many calls for Mustard and Marmalade Spoons. Therefore, we have decided to add one of each to the line. Crystal only.

Samples are being sent you and prices will be as follows:

Mustard Spoon	\$1.00 Dozen List
Marmalade Spoon	\$1.50 Dozen List

We believe these Spoons will greatly help the sale of the Marmalades and Mustards."

It is doubtful that Cambridge made these spoons; however, their source is not known. Due to the date, it is unlikely they were coming from Europe. Also not determined is how long these spoons remained available from Cambridge.

NATIONAL STUDY GROUP REPORTS



Study Group #13 The Miami Valley (Ohio) Study Club

Huber Heights Public Library
February 13, 2001

The meeting was called to order at 7:00 p.m. by Larry Everett. There were 16 members present. It was moved and seconded to dispense with the reading of the minutes since they had been mailed to each member. The treasurer presented the report and filed it with the secretary.

OLD BUSINESS:

The Rankins volunteered to host the May meeting since the meeting date is also election day and we cannot meet at the library.

Frank Wollenhaupt reported on the candlestick project. He has received the list of candlesticks from several members, and he is still waiting to hear from others. He will make the decision as to which candlesticks will be included in the slide presentation, and will come to each member's home to photograph the candlesticks.

If anyone is interested in running for the National Cambridge Collectors Board, please let Larry Everett know this week.

The cost to sponsor a showcase in the new museum will be \$1000. It was moved by Frank Wollenhaupt and seconded by Will Acord that the Miami Valley Study Club sponsor a showcase. The motion carried unanimously.

With the death of Jim Barbian, there is now a vacancy on the Program Committee. Interested members should contact Ron Hufford or Larry Everett.

NEW BUSINESS:

Larry and Susan Everett have been selected to chair the Glass Dash at the annual Convention. Any member that would be interested in helping, please let Larry know. Also regarding the convention, another group will be meeting in Cambridge the same weekend as the Cambridge Collectors. So it is imperative that room reservations be made as soon as possible.

The next meeting will be March 13, 2001. The program will be "Confessions of a 1940 Bride" by Larry Everett. This will be a program on stems of the '40s. Everyone should bring examples of stems of this period, including

non-Cambridge stems. The program will be very interactive and participatory. Larry is particularly interested in Rosepoint Carmen, Pristine, gold-encrusted Rosepoint, or gold-edge Rosepoint.

Meeting adjourned at 7:25 p.m.

SHOW AND TELL:

Rubina twist candlestick; Azurite candlestick/vase; Light Emerald Green plainware candlestick; #76 Moonlight Blue Caprice epergne; #253 Caprice vase; #1041 pink swan 4 1/2", Style 1; 10-oz Caprice ball-shaped tumbler; #3070 9-oz goblet in Gold Krystal with Cleo etch; #3020 10-oz gold-encrusted goblet with Bordeaux etch; #3450 Nautilus cream and sugar in Carmen; #1094 cream and sugar in Emerald, hand decorated with small flowers; #511 Pristine 2-light candleholder; #3900/138 candy box with cover etched in Rosepoint; #710 letter holder from the desk set in Light Emerald with gold-encrusted roses; #40 candlestick; #63 special article 6" comport w/green enamel trim in Primrose; pair of 9" candlesticks in Primrose; #1040 Crystal swan, 3" with unusual frosted body.

Frank Wollenhaupt and David Rankin presented a program on a virtual museum. This generated much discussion on the possibility of a complete on-line Cambridge catalog.

—submitted by Diane H. Gary

Study Group # 15 North Texas Cambridge Study Group

January 28, 2001

Yes, there really is a North Texas Study Group. We have been negligent in submitting recent minutes because of our changing membership. We are working on methods for improving our participation.

Bert and Donna Kennedy provided the house and snacks. We had eleven interested Cambridge collectors in attendance. Our first meeting of 2001 was on stems. Everyone was responsible for bringing some stems to the meeting. We had fun discussing the various pieces, even discussing the difference between blown and molded items. We made an interesting observation about the 3779 stem - the stem appears square when viewed

UPCOMING EVENTS

- April 6 & 7 Heisey Collectors of America, Inc.
All-Heisey Benefit Auction
740 345-2932

- June 13-16 Heisey Collectors Convention
740 345-2932

- July 14 & 15 National Depression Glass Association
Show & Sale
Jackman Long Building, State Fairgrounds
Salem, Oregon
503 774-1962 or 503 282-0608

Know of any interesting events or shows coming up? Please let us know, and as space allows, we will print information about these events.

Have you visited our website lately?

Come see the changes!

There's often something new...

<http://www.cambridgeglass.org>

through the base of the bowl.

After we shared thoughts about the stems, it was time for Show and Tell. The finds included: 3400/38 ball jug with Lucia cutting and matching 3121 stem; 3400/38 Pistachio ball jug with Diane etching; #175 8-oz syrup with Dresden etching; juice reamer; 3400/38 Ebony ball jug with original sticker; 40-oz Mt Vernon Amber decanter, and an 8-inch round plate etched Diane in the center and Portia along the outer edge.

We concluded our meeting with conversations about attending the San Antonio and Houston shows in February, while enjoying the snacks prepared by Donna Kennedy. Our next meeting will be in March, "Investigating the Keyhole."

—submitted by Freeman Moore

LETTERS FROM MEMBERS AND FRIENDS

Dear Crystal Ball,

I read the article about the Study Group #14, "the Cambridge Cordials." They mentioned a Baker Family Museum.

Could you please tell me and the other members what town they are in? Also give us their address, business hours, and admission fee. I am sure there are many people passing through the area that would love to stop and see the museum.

*Thank you,
Margaret J.
Wichita, KS*

Dear Margaret,

The Baker Family Museum is a collection of items collected by a brother and sister. There are over 100,000 pieces in the collection which includes glass from Cambridge, Heisey, Fenton, Wheeling, etc. All pottery manufacturers are represented as well.

The Museum is located in Caldwell, Ohio. Caldwell is approximately 25 miles south of Cambridge, Ohio, just off of I-77. Hours are: Wednesday & Thursday 9:00-4:00, Friday & Saturday 9:00-5:00, and Sunday 12:00- 5:00. Admission is on a donation basis only.

Thank you for asking. There have been several similar requests.

Have a question you would like answered? Is there something that you would like to share with fellow NCC members?

Send your correspondence to the *Crystal Ball* c/o the NCC address. We'd like to hear from you.

[NCC, P.O. Box 416, Cambridge, OH 43725]

National Cambridge Collectors, Inc.
Presents

Blossom Time

Candlelight

Chantilly

Diane

Elaine

Portia

Wildflower

Announcing the completion of the series of booklets covering seven of the major Cambridge etchings. These booklets are similar in style to the Rose Point book. Each contains an article about the etching, listings of all the known pieces, and illustrations of most items. Economically priced at \$7.95 each (Elaine \$9.95), collectors of these etchings cannot afford to be without a copy. Order your copies now. Value guides not available.





RUBY (RED) SCOTTIES CAN STILL BE ORDERED

HELP WITH THE NEW MUSEUM ORDER YOUR SCOTTIES TODAY

WON'T YOU HELP?

The Ohio flood of 1998 destroyed the National Cambridge Collectors' Museum. Due to our great loss we are offering the public an opportunity to help by purchasing a special edition of Scottie Dog bookends. These Scotties were made from the original Cambridge Glass mold in a "Ruby" (Red) color, and are clearly marked with the N.C.C. name, date of 2000 and Mosser logo. This color was limited to production during the year 2000 and no more will be made. The cost is \$100 per pair. Shipping charge is \$10 per pair. If you are an Ohio resident, you will be subject to 6 1/2% sales tax (\$6.50 per set).

THANKS!!!!

Order blank

Name: (please print) _____

Address: _____ Phone (____) _____ - _____
(UPS requires a street address) (Required if you give a P.O. Box)

City: _____ State: _____ Zip Code _____ - _____

Check # _____

No. of pair (Ruby)	_____ X \$100.00 = \$ _____	Amount \$ _____
Shipping - \$10.00 per pair	_____ X \$10.00 = \$ _____	
Sales tax (if Ohio Resident)	\$ _____ (\$6.50 per pair)	Date _____
Total of order	= \$ _____	

Make checks payable to: N.C.C., Inc.

Mail to: **National Cambridge Collectors, Inc.**
P. O. Box 416
Cambridge, OH 43725-0416

P.S. Those of you who are dealers and are buying the above Scotties for resale, and will not be paying the State of Ohio Tax, will have to sign a tax exempt form for such and all lines must be filled out completely to be exempt from paying the State of Ohio Sales Tax.

The undersigned hereby claims exemption to purchase of tangible personal property from the National Cambridge Collectors, Inc. on and after February 5, 1999 and certifies that this claim is based upon the purchaser's proposed use of the items purchased, the activity of the purchaser, or both as shown hereon: (Exemption Number from Rule #93.

(Purchaser's Name)

(Purchaser's Address)

(Purchaser's Activity)

(By - Signature and Title)

(Date Signed)

(Vendor's License Number)

~ GLASS ~ MARKETPLACE

WANTED: Crystal, 3500, Gadroon with gold stipling (gold icicle trim) on rim. Clarets, champagnes, and/or wines. No etching. **L. Groban (301) 530-6705.**

WANTED: Crystal, 3779, Cambridge—Roslyn Pattern: 10 9-oz. Tall Goblets, 4 9-oz. Low Goblets, 5 6-oz. Low Sherbets. Would consider Cambridge—Chantilly Pattern on 3779 stem, same items. Contact: **Jan & Jesse Adler**, 26738 York, Huntington Woods, MI 48070 **(248) 399-9295.**

FOR SALE: 4 2-oz. footed tumblers etch Rosalie Topaz top Willow Blue foot. \$49.00 each. Plus a little for shipping. Call **Clarke West (937) 390-3617.**

FOR SALE: 6 blue Decagon 7½ plts @ \$10.00. Round Emerald: Tid-bit \$22.50, #168; 6 8" plts @ \$6.00, #556; 4 c/s @ \$20.00, #933; 1 saucer \$5.00, #933. Round Ruby: 3 c/s @ \$15.00, #494; 1 cup \$10.00. Lynbrook Rock Crystal: 1 7½ plt w/sticker \$8.50. #620 cream & tray, rose/gold trim, #620, p. 17 bk. 1927-29, \$32.50. **Carol's Ant/Coll, P.O. Box 190977, Boise, ID 83719-0977.** Email: Caroanco@aol.com



Bogart's Bed & Breakfast

62 W. Main Street, New Concord
New Concord lodging in 1830 Federal
Style home, decorated with
antiques throughout.



Bogart's Antiques

7527 E. Pike, Norwich, OH
Quality Antiques Bought & Sold

OWNERS: Jack & Sharon Bogart

740-826-7439 or 740-872-3514

www.bedandbreakfastohio.com Reservations by phone

WE CLEAN CLOUDY GLASS! SATISFACTION GUARANTEED

Yes, it is true that we really can restore the interior of your cruet, vase, decanter and other internally etched items back to near original condition.

We do not oil, wax or cover up the sickness in any way! We actually remove it.

No items are too sick to clean! If we cannot clean an item to meet your satisfaction, the cleaning is FREE!

Send no money up front. When we return your item a bill will be enclosed for the postage and cleaning. If you are not satisfied, only the return postage is requested.

Most items clean in 7-8 weeks. All glass is handled and cleaned at your risk. Some very cloudy items may take several additional weeks.

Cocktail Shaker	\$35-\$40.00	Salt Shaker (1)	\$25.00
Cologne	\$30.00	Salt Shaker (2)	\$45.00
Cruet	\$30.00	Vases (under 10")	\$30-\$35.00
Decanter	\$35-\$45.00	Vinegar & Oil	\$30.00
Lavendar Jar	\$25-\$35.00	Water Bottle	\$35-\$40.00

Ship to: **Kim Carlisle & Associates**
28220 Lamong Road, Dept. C
Sheridan, IN 46069
(317) 758-5767

kcarlisl@indy.net

2001



Stems Without Thorns

As the world's largest supplier of old & new china, crystal, silver and collectibles, Replacements, Ltd. has more than 700 different patterns of Cambridge crystal.

And however much we enjoy selling pieces that were once thought irreplaceable, we love buying them as well. Thanks to people like you, our crystal inventory currently numbers in the hundreds of thousands, and the numbers keep growing every year.

So, if you've been unsuccessfully searching for that elusive piece of Cambridge — or any other type of fine crystal — call us for a free list of pieces available in your pattern. And, if you're looking to sell pieces you currently have, we can help you there, too.

REPLACEMENTS, LTD.

China, Crystal & Silver • Old & New

1-800-REPLACE
(1-800-737-5223)

1089 Knox Road,
PO Box 26029, Dept. CB
Greensboro, NC 27120
www.replacements.com

DEALERS



DIRECTORY

NOTE: When writing to the dealers listed here, please enclose a SASE!

<p>DAUGHERTY'S ANTIQUES Jerry and Shirley</p> <p>Antiques and Collectibles * Mostly Glass</p> <p>Shows & Mail Orders 2515 Cheshire No. 402-423-7426 Evenings Lincoln NE</p>	<p>YOU CAN ADVERTISE YOUR ANTIQUE SHOP HERE!</p>	<p>THE JONES GROUP Cindy Jones Buy and Sell Cambridge Glass 650 Riverside Drive Sleepy Hollow, NY 10591 914-631-1656 or E-Mail Caprice0@aol.com</p>
<p>Milbra's Crystal Buy & Sell Replacement and Matching Specializing in: Cambridge Fostoria Heisey and others</p> <p>Milbra Long (817) 645-6066 Emily Seate (817) 294-9837 PO Box 784, Cleburne, TX 76033 E-mail: longseat@flash.net</p>	<p>CRYSTALLINE COLORS Buy, Sell, and Appreciate Cambridge and Other Elegant Glass I Love Cambridge</p> <p>Lynne R. Franks 216-661-7382 Ohio & Western PA Antique Malls</p>	<p>Mary Jane's Antiques Mary Jane Humes 2653 Burgener Dr., Decatur, IL 62521 Glass Cambridge, Fostoria, New Martinsville, Duncan Miller, Imperial and Early Pressed mjhumes@aol.com 217-422-5453</p>
<p>THE GLASS URN 456 West Main Street, Suite G Mesa, AZ 85201 480-833-2702 480-838-5936</p> <p>Mail Order Shows Open Shop CAMBRIDGE, FOSTORIA, HEISEY, ETC.</p>	<p>YOU CAN ADVERTISE YOUR ANTIQUE SHOP HERE!</p>	<p>GATEWAY ANTIQUE MALL, INC. JUST NW OF MINNEAPOLIS-ST. PAUL, MN Next to Super 8 in Rogers, MN (I-94/101 Intersection) 85 Dealers 7 Days, 10-6 612-428-8286 ELAINE STORCK, OWNER/DIRECTOR</p>
<p>THE DEGENHART PAPERWEIGHT AND GLASS MUSEUM, INC. P. O. Box 186 Cambridge, Ohio 43725-0186 Intersection of US 22 & I 77 Phone 740-432-2626</p>	<p>D & D ANTIQUES Columbus, Ohio</p> <p>Dick Slifko SHOWS ONLY</p>	<p>JAMESTOWN ANTIQUES 16 E. Washington St., Jamestown, OH 45335 Rosepoint and Cambridge our Specialty</p> <p>Buy (937) 675-6491 Sell Susan and Larry Everett</p>
<p>THE GLASS CUPBOARD P.O. Box 652 West End, North Carolina 27376</p> <p>Marcia Ellis Cambridge Show 910-673-2884 and Mail Order</p>	<p>JUDY'S ANTIQUES Judy Bennett 422 S. Ninth Street (Corner of Jefferson) Cambridge, Ohio 43725 Bus 740-432-5855 Res 740-432-3045 CAMBRIDGE GLASS MY SPECIALTY</p>	<p>Horse'n Around Antiques Kelvin and Heather Moore Exit 69 on Interstate 64 Woodlawn, IL 62898 e-mail: hmoore@midwest.net TEL 618-735-9114 Specializing in Cambridge and other Elegant Glass</p>
<p>FINDER'S ANTIQUE HOUSE 3769 Highway 29 North Danville, VA 24540 (804) 836-6782 Cambridge-Heisey-Duncan-Fostoria</p>	<p>GREEN ACRES FARM 2678 Hazelton Etna Rd., Pataskala, OH 43062 (State Route 310 North)</p> <p>Sat & Sun 1-7 PM 740-927-1882 Antiques, Crystal Glass and Collectibles</p>	<p>CRYSTAL LADY 1817 Vinton St., Omaha, NE 68108</p> <p>Bill, Joann, and Marcie Hagerty Bus. 402-341-0643 Res 402-391-6730 Specializing in Elegant Glass & Collectibles</p>
<p>YOU CAN ADVERTISE YOUR ANTIQUE SHOP HERE!</p>	<p>YOU CAN ADVERTISE YOUR ANTIQUE SHOP HERE!</p>	<p>PENNY COURT MALL 637 Wheeling Avenue Cambridge, Ohio 100 Booths 15,000 sq. ft. HOURS: Daily 10-6 Sunday Noon-5 Closed: Easter, Thanksgiving, Christmas Call for Other Holiday Hours 740-432-4369</p>
<p>YOU CAN ADVERTISE YOUR ANTIQUE SHOP HERE!</p>	<p>YOU CAN ADVERTISE YOUR ANTIQUE SHOP HERE!</p>	<p>MARGARET LANE ANTIQUES 2 E. Main St., New Concord, OH 43762 Lynn Welker 740-826-7414</p> <p>Cambridge Glass Matching Service Hours Mon-Fri 10-12 AM, 1-5 PM or by Appointment</p>
<p>ISAACS ANTIQUES (740) 826-4015</p> <p>See our booths in Penny Court Mall in Cambridge and White Pillars Antique Mall at Rt. 40, one mile west of I-70 Norwich Exit #164</p>	<p>ALADDIN LAMP BOOKS Free List Figurine Lamps Wanted Bill & Treva Courter</p> <p>3935 Kelley Rd Kevil, KY 42053 Phone 270-488-2116 FAX 270-488-2055</p>	<p>DEXTER CITY ANTIQUE MALL P. O. Box 70, Dexter City, Ohio 45727 (740) 783-5921</p> <p>Located on Ohio St. Rt. 821 Between Exits 16 & 25 off I-77 Just 30 min. South of Cambridge, Ohio</p>

AUCTION

All Cambridge Glass and Related Items

from the Private Collection of

Phyllis and (the late) Bill Smith

Thursday, June 21, 2001

10:00 a.m.

Doors Will Open at 9:00 a.m.

Pritchard Laughlin Civic Center — In the Galleria
Glenn Highway (US 40 W at I-70) Cambridge, OH

FOOD WILL BE AVAILABLE

Auctioneer: Craig Connelly

Owner: Phyllis Smith

Auction Catalogs will be available—Send 34-cent SASE ((#10 business envelope)
Phyllis D. Smith, 4003 Old Columbus Road, Springfield, OH 45502-8802
Phone: (937) 323-3888

National Cambridge Collectors Inc
PO Box 416
Cambridge OH 43725-0416

<http://www.cambridgeglass.org>
e-mail: NCC_CrystalBall@yahoo.com

FIRST CLASS MAIL
U.S. POSTAGE
PAID
PERMIT NO. 1
CAMBRIDGE, OH

FIRST CLASS MAIL

Membership Renewal Notice

**If the date on your address label is 4-2001,
this is your LAST ISSUE of the Crystal Ball.**
Please take a moment and renew now. Thank you!
