



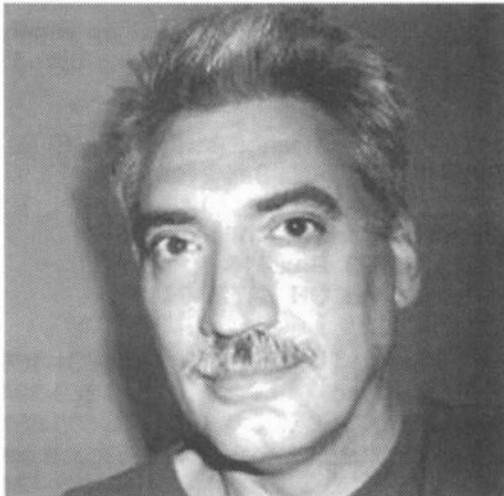
# Cambridge Crystal Ball

Published monthly by National Cambridge Collectors, Inc.  
to encourage and report the discovery of the elegant and boundless product of the  
Cambridge Glass Company of Cambridge, Ohio

Issue No. 338

June 2001

## Convention Speaker to Discuss Carnival Glass



Bruce Dooley, Convention 2001  
Banquet Speaker Saturday Night

Bruce Dooley, this year's National Cambridge Collectors, Inc. Convention banquet speaker is an avid collector and serious student of Carnival Glass. Mr. Dooley, a native of New Jersey, is a graduate of Richard Stockton College and has a bachelor of arts degree in accounting and business administration.

Since Mr. Dooley's interest in Carnival Glass began, he is or has been a member of eight major Carnival Glass collecting clubs including American Carnival Glass Association, Heart of America Carnival Glass Association, Keystone Carnival Glass Club, and Woodsland (World Wide Web Carnival Glass Club).

He is currently serving as a consultant for the Carnival Glass section of the "Antique Trader Antiques and Collectibles Price Guide" and the "Antique Trader American Pressed Glass and Bottles Price Guide." Bruce does Carnival Glass appraisals for private individuals as well as participating in "public appraisal days" for various local clubs.

Mr. Dooley maintains a website that includes an informational site with a column called "Ask Bruce" for anyone who is in need of glass information.

No novice to presenting programs on Carnival Glass, Bruce has appeared before both beginning and advanced Carnival collectors. To keep abreast of what is going on in the field of Carnival Glass collecting, Mr. Dooley, in the course of a year, attends at least seven regional and national Carnival Glass conventions as well as numerous auctions, shows, and markets.

Mr. Dooley's presentation following the annual NCC banquet will cover Carnival Glass in general, including our own Cambridge Carnival Glass.

### *Inside This Issue:*

Bloom Off the Rose?  
Convention 2001 Update  
New Museum Update  
March Quarterly Meeting Minutes  
Cambridge Glass with Silver Decoration

## Cambridge Crystal Ball

Official publication of National Cambridge Collectors Inc., a non-profit corporation with tax exempt status. Published once a month for the benefit of its members. All rights reserved; reproduction in whole or in part without written permission of NCC and the author is prohibited.

Membership is available for individual members at \$20.00 per year and an additional \$3.00 for associate members (12 years of age and older, residing in the same household). Of the master member dues, \$14.00 is credited to a one-year subscription to the *Crystal Ball*. All members have voting rights, but only one *Crystal Ball* per household. **Multi-year memberships are available: 2 years for \$38.00, 3 years for \$56.00.**

### 2000-2001

#### OFFICERS AND COMMITTEE CHAIRPERSONS

President .....	Richard D. Jones
Vice President .....	Tarzan Deel
Secretary .....	Sharon Miller
Treasurer .....	Charles Upton
Sergeant-at-Arms .....	Michael Neilson
Acquisitions .....	Lynn Welker
Budget & Finance .....	Dennis Snyder
By-Laws .....	Bud Walker
Corresponding Secretary .....	Charles Upton
Endowment .....	George Stamper
Facilities .....	Carl Beynon, Joe Miller
Grants and Fundraising .....	Sharon Miller
Long-Range Planning .....	Mike Strebler
Member Services .....	George Stamper
Membership .....	Jeff Ross
Museum .....	Cindy Arent
Nominating .....	Tarzan Deel
Non-Glass Items .....	Carl Beynon, Bill Hagerty
Program .....	David Ray
Projects .....	Bill Hagerty
Publications .....	Mark A. Nye
Publicity .....	Cynthia A. Arent
Study Group Advisor .....	Ken Filippini
Technology .....	Linda Roberts
WebMaster .....	Linda Roberts
2001 Convention .....	Mark A. Nye
2001 Auction .....	Squeek and Dorothy Rieker, Lynn Welker
2001 Glass Show ....	Mary Beth Hackett, Joy McFadden
2001 Glass Dash .....	Larry and Susan Everett
<i>Crystal Ball</i> Editor .....	Lorraine Weinman
<i>Crystal Ball</i> Circulation Directors ...	Lisa and Mike Neilson

Internet website: [www.cambridgeglass.org](http://www.cambridgeglass.org)

**WATCH FOR THE OPENING OF THE NEW NATIONAL CAMBRIDGE COLLECTORS MUSEUM ON SOUTH NINTH STREET IN CAMBRIDGE, OHIO.**

**THE TEMPORARY NCC MUSEUM IS LOCATED ON WHEELING AVENUE IN PENNY COURT MALL IN DOWNTOWN CAMBRIDGE, OHIO.**

## ADVERTISING RATES

### Display Rates (camera ready ads preferred)

Unit	Members	Non-Members
Full Page	\$45.00	\$60.00
3/4 Page	\$35.00	\$50.00
1/2 Page	\$25.00	\$35.00
1/4 Page	\$15.00	\$25.00
1/8 Page	\$10.00	\$15.00

(\$5.00 additional if a photograph is included in display ad)

### Classified Rates

10 cents a word \$2.00 minimum

Abbreviations and initials count as words. Type sizes cannot be mixed in classified ads. **Payment in full must accompany all ad copy.** Contact Editor for copy assistance.

### Dealer Directory

Six Line Maximum \$24.00 for 12 month contract  
Also included - Listing on our Internet site at:  
[www.cambridgeglass.org](http://www.cambridgeglass.org)

Cambridge *Crystal Ball* assumes no responsibility for items advertised and will not be responsible for errors in price, description, or other information.

**Advertising copy, letters, articles, must be received by the 5th of preceding month to be considered for publication in the next issue.**

Please address all correspondence (include SASE) to:  
(or E-Mail [NCC\\_CrystalBall@yahoo.com](mailto:NCC_CrystalBall@yahoo.com))

**National Cambridge Collectors, Inc.**  
**P.O. Box 416**  
**Cambridge, OH 43725-0416**

President Rick Jones	914-631-1656
Vice President Tarzan Deel	540-869-3949
Secretary Sharon Miller	740-685-6513
Membership	email: <a href="mailto:jaross@cambridgeoh.com">jaross@cambridgeoh.com</a>
NCC Museum: Phone	740-432-4245
Fax	740-439-9223

**Please notify us immediately of any address change.**

Opinions or information stated in any signed article or letter printed in the *Crystal Ball* are those of the author and may not agree with National Cambridge Collectors, Inc. The Editor reserves the right to refuse and to edit any material submitted for publication to conform to the editorial style of the *Crystal Ball*. Members are encouraged to write to NCC and the *Crystal Ball* sharing their knowledge and questions.

## President's Message



# *Bloom Off the Rose?*

As I've traveled around the country over the last couple of years to glass shows and talked to show promoters (either at the shows or via email), you get the general sense that attendance has been lagging. Various reports from promoters and dealers seems to be that they are down 10-15% at the gate.

It begs the question – Why is this happening and what can be done about it? I don't, by any means, have all the answers to this question or profess to be able to scratch the surface. However, I thought it to be an interesting thing to ponder and see if it is a logical follow-up to articles I've written in the last few years about how the Internet may change the ways of collecting and the role of national groups like ours.

Fortunately for NCC, our glass show has been very strong over the last couple of years. We hope it continues that way for many years to come, but there are many members I hear from who have concern that we too may be vulnerable. Time will tell, but like any important initiative for NCC, we need to think about how we keep our activities contemporary and appealing.

At many regional shows, the talk does fall squarely on the Internet. There was a time when collectors would save up for the one big show in the area and come prepared to add items to their collection that they couldn't find in local antique shops. Well now we can shop 24/7 and scour a national base of inventory.

People who formerly shopped garage sales, auctions, and may have been pickers for other regional or national specialists in Depression glass, now can take their merchandise to a national collector universe immediately. This has got to impact many glass dealers' ability to build and maintain stock.

The buyers who waited for shows, now can buy daily on eBay and MegaShow. Some who I talked to used to save "the big glass show weekend" on their calendars and not plan anything else. Now they are taking vacations or business trips and saying "it's no big deal, I can buy on the 'Net any day."

These are fundamental changes to the collecting process that are not likely to reverse themselves. As such, it's timely to ponder the future. It strikes me that glass shows need to offer consumers more than just a collection of booths to shop. They need to offer an "experience." The Internet, as we've said many times, cannot capture the

fellowship of collectors. With the exception of specialty sites like ours, the learning experience available on the 'Net is not as strong as the personal interaction one gets at a show from dealers and fellow glass enthusiasts.

NCC has had great results in the last few years by setting up education and information booths at shows (including Harrisburg, Hartford, White Plains, Sanford, and Denver, among others). Our chance to sell books, answer questions and just meet nice people, has to add to the collector experience as well as furthering our club's goals.

I'd encourage any member who has a show in their area to begin a dialogue with a show promoter. Most of them make their success based on the size of their gate, so I'd hope they'd be receptive to an NCC participation to add a dimension that might help them build attendance and customer satisfaction.

The National Depression Glass Association has the greatest focus of this kind, with collectors creating dozens of displays to help build education. The NDGA show changes location each year to help bring their message to various parts of the country. This year it heads to the Pacific Northwest (Portland, Oregon area) for the first time. I plan on going this year and hope they permit NCC book sales.

Over time, all the national collector clubs are going to need to cooperate more with themselves and with various show promoters, to help get the education and preservation message out. Collecting glass is a very personal activity, but has wonderful affiliation opportunities. National clubs and regional shows should work in closer partnership.

**Reminder-** Our *May Crystal Ball* had the registration forms for this year's Annual NCC Convention. PLEASE JOIN US! It is a great time to meet fellow collectors and this is a very dynamic year for us. In addition to our first class glass show and a chance to see our developing museum, you'll have a chance to dialogue in a workshop specifically focused on the future of the glass business. It will be a fascinating weekend! Also, please send in your NCC Board votes from the *May Crystal Ball*. We want more participation in this process. Could you take a minute now to have your voice heard? See you soon!

*Pete*

## CAMBRIDGE FOR SALE

### NUDE STEMS

Cocktail, Amethyst	\$125.00
Cocktail, Carmen	\$199.00
Cocktail, Mandarin Gold	\$125.00
Cocktail, Smoke	\$295.00
Brandy, Forest Green	\$175.00
Brandy, Heatherbloom Optic	\$295.00
Brandy, Moonlight Blue	\$450.00
Table Goblet, Forest Green	\$175.00
Ivy Ball, Forest Green	\$195.00
Comport, Farber w/Amethyst Bowl <i>missing chrome on knee</i>	\$65.00

### CAPRICE

#28 Platter, 14", Moonlight Alpine (some scratches)	\$65.00
#300 Blown Tumbler, 10 oz., Crystal (7)	\$20.00

### STEMWARE

Tall Sherbet, #3078, Amethyst (2)	\$20.00
Low Sherbet, #3095, Crystal w/Ebony Stem & Foot	\$20.00
Ice Tea, Tempo, Crystal (6)	\$12.00
Cordial, #3121, Gold Krystal, Optic	\$38.00
Cordial, #1066, Amber Optic (2)	\$35.00
Cocktail, Stradivari/Regency, Crystal (4)	\$18.00

### OTHER

Salad Plate, Martha, Chantilly Etch (8)	\$20.00
Tumbler, Tuxedo w/Carmen foot (6)	\$9.00
Candlesticks (pair), 3121 Stem, Crystal	\$95.00
#SS18 Shell Bowl, 10", Emerald (Dark)	\$90.00
#1412 Rose Bowl, 8", Amber	\$49.00
Ivy Ball, Keyhole Stem, Royal Blue	\$95.00
Ivy Ball, Keyhole Stem, Forest Green	\$79.00
Cream & Sugar, Decagon, Willow Blue	\$30.00
Relish, 6 part, Hexagonal, Amber w/gold trim (some wear)	\$45.00
Ice Pail, Tally Ho, Forest Green, frosted on inside	\$89.00
#3500/45 Urn, Ebony w/gold trim (some wear)	\$145.00
Bowl, Azurite, 8½", w/gold trim	\$133.00
#1917/256 Footed Mayo, Primrose (no spoon)	\$75.00
Covered Candy, 3 part, 3500, Willow Blue	\$79.00
Tumbler, 2½ oz., Georgian, Moonlight Blue	\$20.00
#3400/96 Cruet w/stopper, 2 oz., Forest Green	\$39.00
Candlestick, Keyhole, 2 light, Carmen	\$145.00
Basket, Georgian, Smoke	\$65.00
#30 Everglades Platter (Swan), Willow Blue	\$149.00
Tall Joe, Tahoe Blue (2) (slight variation in height)	\$20.00
#94 Vase, Sweet Pea, Helio w/gold trim (some wear)	\$60.00
Comport, Honeycomb 5", Rubina, excellent color	\$350.00
Decagon 11" Centerpiece bowl, etched 731 with Draped Lady Flower Frog, Frosted Crystal (prob. Imperial)	\$150.00

Prices are firm, shipping extra  
Pictures available via e-mail  
Condition excellent unless otherwise noted

**ALEX & SHELLEY CITRON**  
(804) 296-2531  
slunicorn@aol.com

## MAKE PLANS NOW!!

### Tentative 2001 Calendar Planning

#### June 21-24

2001 National Cambridge Collectors' Convention  
"Mardi Gras/Carnival"  
Pritchard Laughlin Civic Center  
Cambridge, Ohio

#### June 22-24

NCC Glass Show and Sale  
Pritchard Laughlin Civic Center  
Cambridge, Ohio

#### June 23

"Glass Dash" ("flea" market)  
Beech Grove Family Development Center  
Cambridge, Ohio

#### June 24

NCC Annual Meeting  
Pritchard Laughlin Civic Center  
Cambridge, Ohio

#### August 25 (tentative)

August Quarterly Meeting  
To Be Announced  
Cambridge, Ohio

#### November 3 (tentative)

November Quarterly Meeting  
Education Program  
To Be Announced  
Cambridge, Ohio

Please share your **RECENT FINDS** with us!  
We would love to see your finds...and hear  
about them as well.

Send photos and stories to:  
*Crystal Ball*—Recent Finds  
c/o NCC  
PO Box 416  
Cambridge, Ohio 43725-0416

# *Convention 2001 Update*

by Mark Nye, Convention Chairman

There may still be time to make the necessary arrangements to attend the 2001 NCC Inc. Convention but you have to act fast. Motel reservations should be made at once and registration forms must be received by June 5. As in previous years, we do not send out convention registration confirmations. If you have reason to question whether or not your registration was received, or have convention related questions, call me at (517) 782-1469 before June 17. I will be in Cambridge starting June 17, staying at the Best Western Motel and can be reached there.

If you are making your first visit to Cambridge or have not attended convention in a number of years, directions on how to find your way around Cambridge are provided elsewhere in this issue. These same instructions will be in your convention registration packet. I am not aware of any major road construction in the immediate area this year so travel around Cambridge should be easy.

Don't worry if you arrive in Cambridge after the registration desk has closed on Thursday and you plan on attending the Picnic that evening. Registration lists and temporary nametags will be available at the Picnic.

Just a reminder, if you like to create costumes, costumes are optional dress for the Friday night supper and prizes will be awarded. Also, there will be a contest to identify the source of a design pattern. Details will be in your convention packet.

Please bring donations for the mini-auction. For those attending their first convention, the Convention mini-auction is a fun auction whose function is to raise money to support the on-going activities of our museum. Any similarity between this auction and a real auction is, for the most part, purely coincidental. There is bidding and items are sold but beyond that, anything goes. All items are donated and need not be Cambridge glass. If the item will create interest and raise money, it is fair game for the mini-auction. Willard Kolb will once again be the auctioneer.

Don't forget to bring that special Cambridge goblet to use at the banquet Saturday evening.

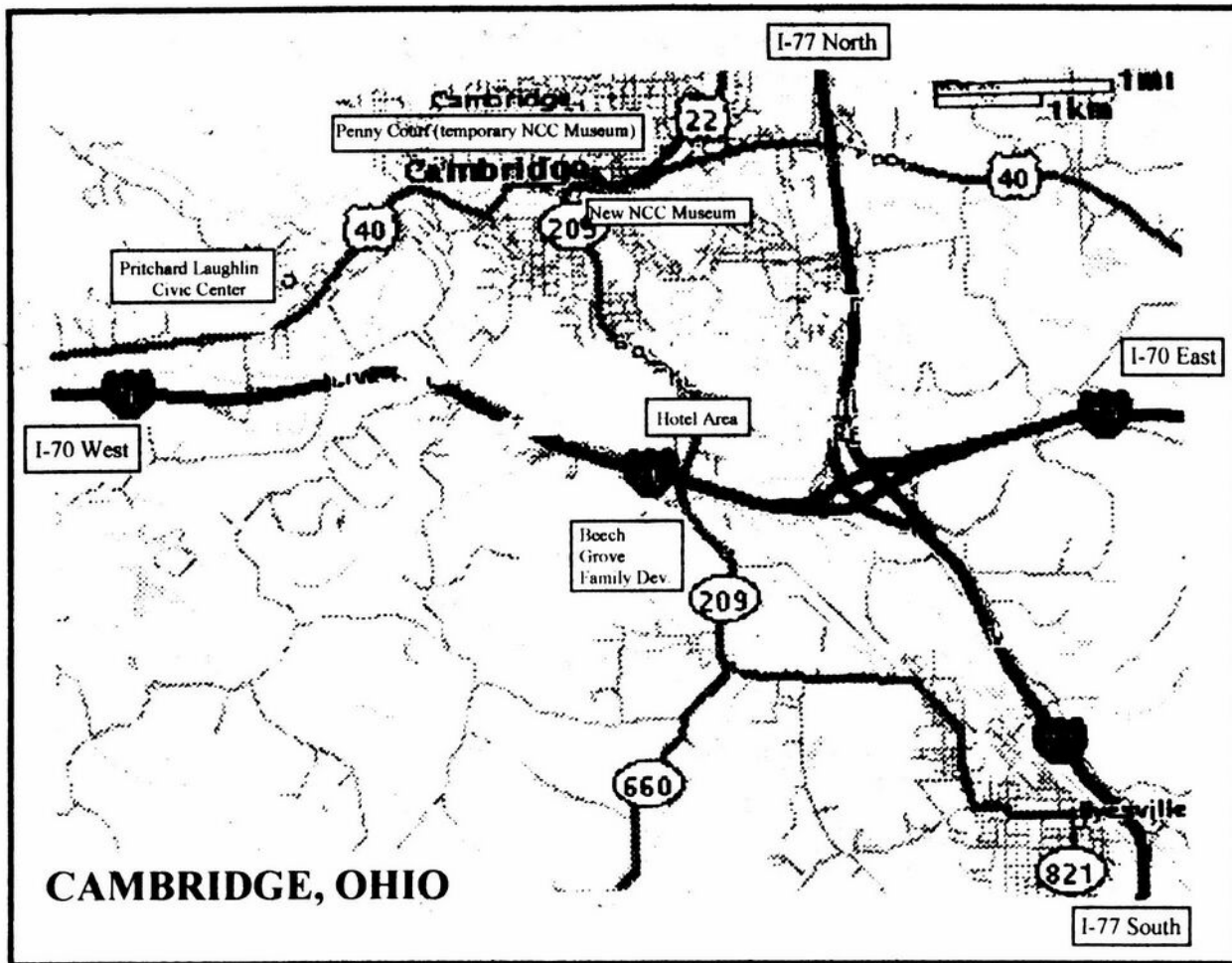
If you are in Cambridge Wednesday afternoon, do take advantage of the opportunity to visit Harold and Judy Bennett's Cambridge Glass Museum without an admission charge. Do have your membership card with you since nametags will not yet be available. The Bennett Museum will be open all week 1:00-4:00 p.m.

The Mosser and Boyd factories operate Monday through Friday and are open to tours during operating hours. Both are open early in the morning, shut down for lunch between 11:00 and 11:30 a.m. and close at 3:30 p.m. Breaks are taken around 9:00 a.m. and 1:30 p.m. Anyone planning on touring one or both of these factories should keep these times in mind. There are no convention organized factory tours this year, simply go to the factories at your convenience.

The Baker Family Museum is a unique and fascinating collection of various types of antiques. It is a private collection of over 100,000 pieces including items from many local glass companies including Cambridge, Heisey, Fenton, Westmoreland, and Degenhart. A vast array of pottery from such companies as Weller, Shawnee, Roseville, and McCoy is also on display as is one of the largest collections of very fine hand-painted porcelain china of R.S. Prussia. There is also an Americana collection ranging from items pertaining to cream processing to an old-time kitchen setting plus many other historical items. The Museum is open from 9:00 a.m. to 4:00 p.m. Wednesday and Thursday and 9:00 a.m. to 5:00 p.m. on Friday. There will not be a convention organized tour; directions are provided in your convention packet and feel free to visit the Museum at the time of your choice.

Don't forget the Dutch Treat Dinner at the China Village Wednesday evening at 6:00 p.m. The restaurant located at 1210 Southgate Parkway, in the same strip mall as Brighton's Old Fashioned Ice Cream parlor and restaurant but at the opposite end, features a buffet.

If at all possible please plan to attend the annual meeting Sunday morning. We realize many of you have to leave for home early Sunday morning but try delaying your departure a few hours so you can attend the meeting.



## Directions Around Cambridge

For the benefit of those members visiting Cambridge, Ohio, for the first time, we provide the following easy directions in order that you may find your way to your motel, the Pritchard Laughlin Civic Center, and other locations in Cambridge. These directions will also be in your convention packet.

All of the major motels are located on State Route 209, North or South, at Exit 178 off of Interstate 70. State Route 209 North is also known as Southgate Parkway. If you are traveling to Cambridge via I-77, exit to I-70 West, Columbus and Cambridge. The very next exit is #178, Cambridge.

To get to the Pritchard Laughlin Civic Center from SR 209, take I-70 West toward Columbus. Take the next exit, #176 - US40. At the traffic light at the end of the exit road, turn right and go east. It is approximately 1/2 mile to the Civic Center which is located on the north side of US 40.

An alternate route to the Civic Center is to take SR 209 into downtown Cambridge. It intersects US 40 in front of the Guernsey County Courthouse. Turn left and follow the signs for US 40 West. The Civic Center will be located on your right (north) side after you have left the city.

To get to the Mosser Glass Company from the motels on SR 209, go to downtown Cambridge and the courthouse. Turn right onto Wheeling Avenue, which is US 40, and follow it until you reach US 22, also known as Cadiz Road. Turn left onto US 22 toward Salt Fork and Cadiz. The Mosser Glass factory, located at 9279 Cadiz Road, will be on your left before you reach I-77. You can also take I-70 to I-77 and go north to the US 22 exit for Cambridge, Cadiz, and Salt Fork. Turn left onto US 22/Cadiz Road and follow it until you reach the Mosser factory, which will be on your right.

# New Museum Update

by Cindy Arent

There has been much activity at the new museum this month. On April 28, a group of members met and worked on spraying/cleaning the parking lot, painting, and removing the vinyl trim along the floor in preparation for the new carpet.

Other activity this month took place in the three display rooms. These rooms have had the paneling removed; dry wall installed and have been primed and painted. It was discovered that the dark marks on the paneling were caused by creosote covered furring strips which would have been very difficult to cover. This work was done to avoid construction dirt in the future once the display area had been established.

On May 6, the contractor began the construction of the wall units. Mr. Edwards and his team are doing excellent work. It is amazing to see the progress each day as the design develops.

The Design and Display Committee will meet May 26 to finalize the committee's Phase II recommendation to the National Cambridge Collectors Board. Phase II of the new museum project is the center display area. The group will review and discuss the options for this area.

We are doing our best to have the new museum partially ready for the June Convention. However, with each new day another detail develops which needs to be discussed and evaluated. We do not want to rush the creation of the museum because we only have one chance to do it correctly. We hope to see you all in June at Convention!

(SEE RELATED PHOTOS ON PAGE 8)

## **(DIRECTIONS—Continued from page 6)**

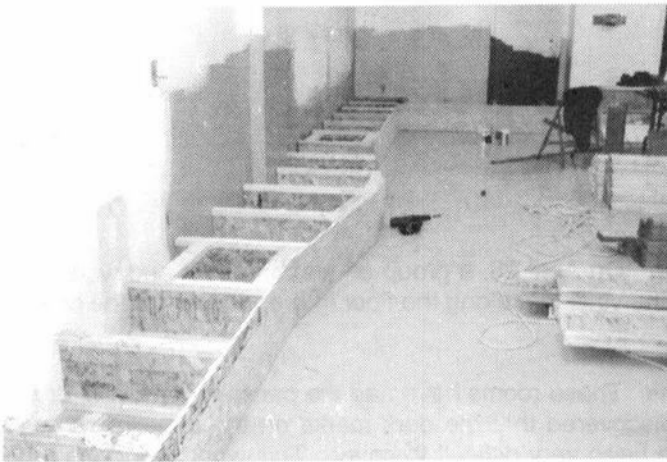
The Boyd Crystal Art Glass Company factory is reached by taking SR 209 into downtown Cambridge. Turn right onto Wheeling Avenue and go to the Elks Building at the corner of 11th Street and Wheeling Avenue. Turn right onto 11th Street and follow it. The street makes a turn and becomes Morton Avenue. The Boyd factory, located at 1203 Morton, will be on your left and is comparatively small. Their parking lot is just beyond the factory building.

Penny Court Antique Mall, home of the temporary NCC, Inc. Museum, is located at 637 Wheeling Avenue. Wheeling Avenue is the main east-west street in Cambridge and runs in front of the Courthouse. Coming from the motels, take SR 209 into downtown and at the Courthouse turn left. Penny Court will be located on your right, just a couple of blocks from the Courthouse, at 637 Wheeling Avenue.

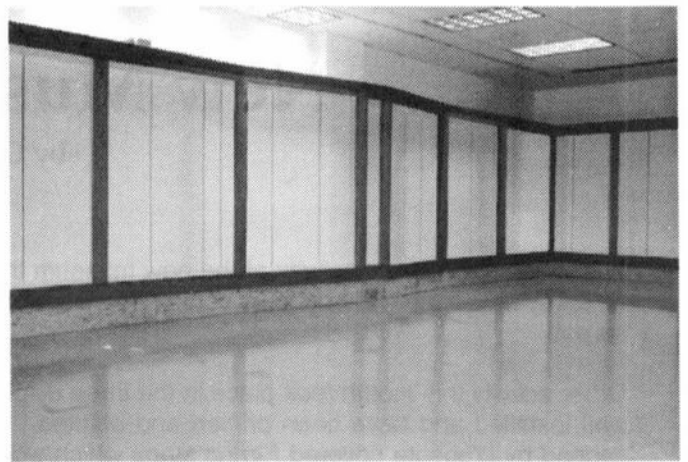
The new NCC Inc. Museum Building is located at 136 South 9th Street, just off of Wheeling Avenue. Coming from the motels, take SR 209 into downtown Cambridge and at the Courthouse turn right. Proceed East on Wheeling Avenue until you reach 9th Street, and turn right onto 9th Street. The Museum Building will be on your right with the parking lot just beyond the building.

The Cambridge Glass Museum, owned and operated by Harold and Judy Bennett, is located at 812 Jefferson Avenue, across the street from Judy's Antiques. Take SR 209 toward downtown Cambridge. Jefferson Avenue runs off of SR 209 to the left, at the foot of the viaduct. Judy's Antiques will be on your right at the first intersection and the Museum will be diagonally across the street with a gated parking lot in front.

To visit the Baker Family Museum, go south on I-77 to the Caldwell exit (Exit 25). Turn left onto SR 78, go to the second traffic light, and turn left onto SR 821. Follow this road through town, past the Courthouse, post office, and Gateway Market. This road ends at the intersection of Frazier Road. Turn right onto Frazier Road. Look for a 3-story, gray and white building. The Baker Family Museum is located in this building.



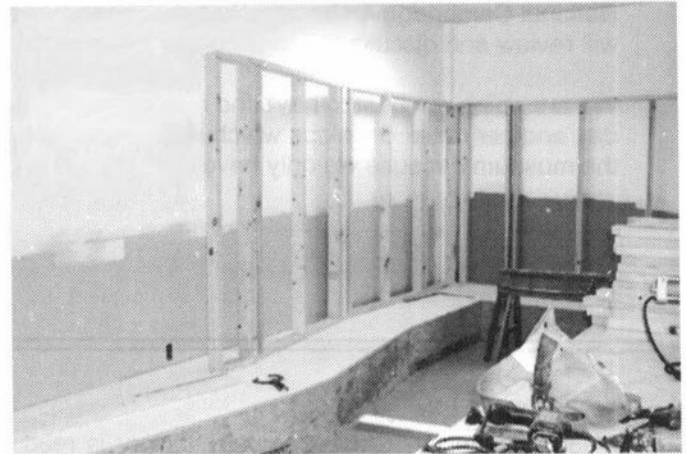
**MUSEUM: From the start ...**



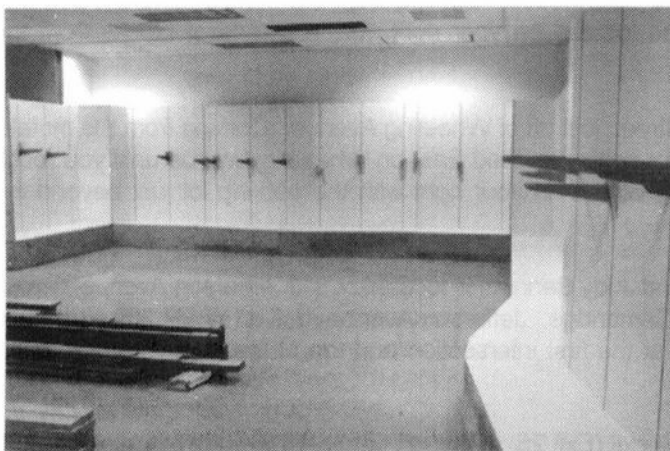
**... to almost finished!**



**Work was begun on the wall showcases.**



**It was exciting seeing the initial transformations.**



**As the backs and brackets went up, it was easier to visualize the final product.**



**Doris (on left) and Roy (second from right) Isaacs stopped by to see the progress of the work at the New Museum. Charles Upton (second from left) and Carl Beynon (right) have observed the changes daily.**

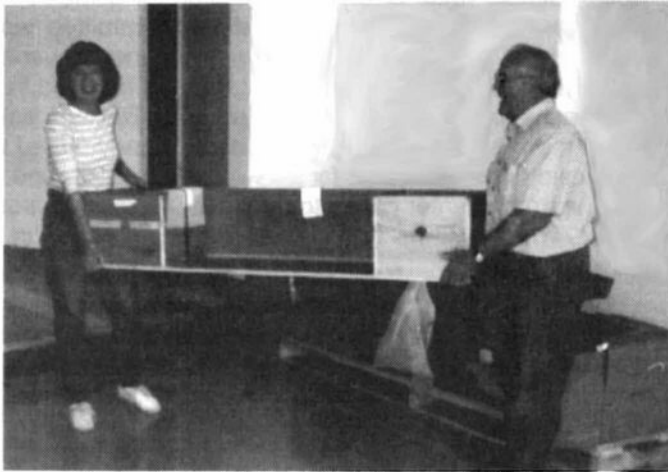




Mike Neilson, with the help of the Cambridge Fire Department to install it, added an American flag to the existing flag pole



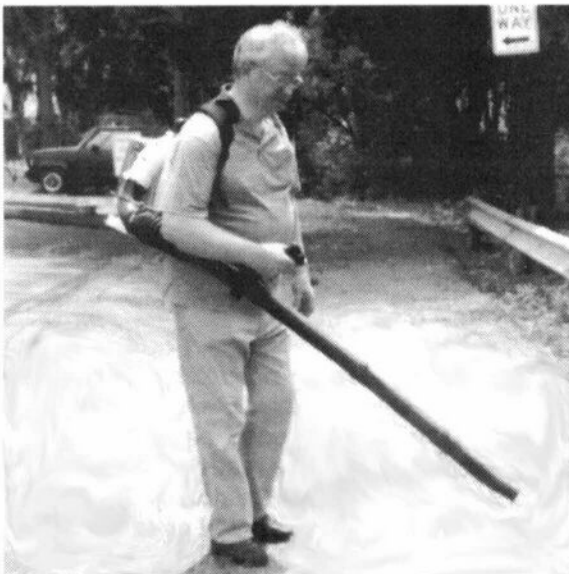
Rich Bennett busy painting one of the display rooms



Cindy Arent (left) and Carl Beynon (right) unpack the new reception desk



Rich Bennett (left) and Charles Upton (right) work at readying the room for the showcases



Charles Upton works at clearing the exterior of the Museum property



Dave Edwards (right) and Joe Endly (left) of Edwards Construction work on the crown moldings of the new showcases

# National Cambridge Collectors, Inc.

## March Quarterly Meeting Minutes

### March 2, 2001

The March Quarterly Meeting of the National Cambridge Collectors, Inc. was called to order at 7:45 p.m. at the Pritchard Laughlin Civic Center by president Rick Jones. A motion was made by Bud Walker and seconded by Ken Rhoads to dispense with the reading of the November minutes. Rick asked if there were any additions or corrections to the minutes.

Charles Upton gave the treasurer's report as of December 31, 2000. The following fund balances were reported: Operating Fund - \$171,586; Building and CP Fund - \$330,043; Endowment Fund - \$17,899 with an ending equity balance of \$519,528.

The following committee reports were given:

**Acquisitions** – Lynn Welker – No Report

**Budget & Finance** – Dennis Snyder

Dennis reported that the organization had had a basically good year. Dennis gave profit figures for the Scottie dog project. We have realized \$13,718 on the red dogs with 205 pairs remaining and \$53,000 on the blue dogs with 1 pair remaining. Dennis also reported that our rate of return from investments was 16.4% last year; however our stock value has dropped. Dennis stated that our diversified portfolio helps the club weather the market crisis and the market is still volatile.

**By-laws** – Bud Walker

Bud reported that he had received a FAX from a member suggesting a by-laws change.

**Corresponding Secretary** – Charles Upton – No Report

**Technology** – Linda Roberts

Linda reported that the website continues to get good hits. This should increase as we get closer to opening the new museum.

**Membership** – Jeff Ross

Master members – 938; Associate – 369; Honorary – 7; Lifetime – 4; Total 1318.

Jeff also reported that he and Ken Filippini had had a very productive, joint meeting of study group representatives and membership.

**Museum** – Cindy Arent

Cindy reported that the museum committee has met several times to discuss possibilities for museum design and display. The committee presented a two-phase plan to the board for approval. Showcases to be permanently installed around the interior walls, showcase lighting, carpet in the display area, auditorium, and hallways as well as the reception area were included in Phase I. The center, free-standing cases designed by Dave Desens will be the major part of Phase II. Cindy showed samples of the carpet and wood stain chosen by the committee. Shelly Citron asked Cindy for a timeline for completion of the phases. Cindy indicated that the committee would like to have Phase I completed by the June convention. Cindy mentioned that the brackets that will be used in the wall cases will be almost invisible. Ken Rhoads asked about the placement of the showcases. Cindy stated that the basic floor plan calls for showcases built around the walls with the center cases to be placed in rows in groups of six. There will be two smaller matching cases in the gift shop area.

**Facilities** – Carl Beynon

Carl reported that the roof of the museum building will need some repair. This will be done when the weather improves. The contractor will take a core sample of the roof. The door to the secure room has been sealed and relocated with the opening into the library area. Also the windows and drive-through have been re-bricked and sealed. The stage wall has been removed and the painting of the front display room and auditorium are complete. Jim Laver, one of our member volunteers, has cleaned debris off the roof. Carl has rented out 18 parking spaces to the bank for \$270 per month with three spaces remaining.

**Non-glass** – Bill Hagerty – No report

**Projects** – Bill Hagerty – No report

**Publications** – Mark Nye

The last four of the seven new etchings books are now finished and for sale, namely, Elaine, Diane, Portia, and Wildflower. The non-cataloged etching book that Mark has been working on will be ready by convention as well as the 1940 Rock Crystal Catalog and price list. The 1956-58 catalog is being re-printed as well.

*(Continued on page 12)*

## IN MEMORY OF DALE SNODE

On March 3, 2001, we lost another member of our original NCC Board of Directors, Dale Snode, Member #10. Dale died at the Southeastern Ohio Regional Medical Center, here in Cambridge, Ohio, after a long battle with cancer. He was born February 16, 1935, in Cambridge, son of the late Forest T. and Mary Elizabeth (Wilson) Snode. Dale was a former auctioneer having assisted Max Cater in holding some of our first annual auctions at the Holiday Inn, here in Cambridge. He was an agent for Grange Insurance and a former member of the Cambridge Police Department. Dale was a security guard for Buckeye Security prior to his death. Dale started guarding an antique show, here in Cambridge, back in 1961 and continued guarding this show for 13 years. When the National Cambridge Collectors started having glass shows, he was picked to guard their show as well and has done so for 25 years.



Dale was a member of Faith United Methodist Church, Guernsey Lodge 632 F&AM, Scottish Rite Valley of Cambridge, and the National Rifle Association. He was a life member of VFW Post 2901, Eagles and Moose, all of Cambridge. He was a 1954 graduate of Cambridge High School, and a U.S. Navy veteran, having served in the Korean War.

He leaves the mother of his children, Joan Boyd, of Cambridge; a daughter, Mrs. Rodney (Tammie) Anderson, of Minnesota; a son, David (Diane) Snode, of Cambridge; a sister, Mrs. Stan (Elizabeth Ann) Tackett, of Arizona; three grandchildren, Nathasha Snode, Ashley Snode, and Jefferey Anderson; a great-grandson, Tanner Snode; and several nieces and cousins.

Dale was buried in Guernsey Memory Gardens here in Cambridge. Very impressive military graveside services were conducted by the Guernsey County Veterans Council.

Most of you may not know Dale very well, but I am sure that the glass dealers that exhibited in the NCC glass shows knew of Dale. It is with this thought in mind that I am starting a memorial fund for Dale. I'm asking anyone to contribute to the Showcase Fund, which was recently set up to purchase showcases for our new museum. Any donations contributed in Dale's memory will go towards purchasing a showcase with Dale's name on it, much like the one set up for Cliff McNeil recently, which has accomplished purchasing a showcase in memory of Cliff. Please send your memorial donations to: National Cambridge Collectors, Inc., P.O. Box 416, Cambridge, OH 43725-9416 and indicate that the donation is in memory of Dale Snode.

Dale will be missed by many people in the NCC I am sure. His replacement will be a gentleman who worked with Dale in the security business for many years and I personally recommend him to all.

Charles A. Upton

(QUARTERLY MEETING MINUTES—Continued from page 10)

**Publicity** – Cindy Arent

The ads and calendar of events have been placed in several publications. The show cards and posters are printed and ready for distribution. Some have already been sent out. Cindy urged board members and committee chairs to take show cards with them this weekend and distribute them in antique malls and stores. Cindy also thanked Judy Rhoads for writing up the November quarterly meeting. She also recognized Alex Citron and stated that Alex will be writing up the auction.

**Study Group** – Ken Filippini

Ken Filippini reported that a good meeting of the study group representatives had been held earlier in the evening with another such meeting to be held in June. Ken also mentioned that two new study groups were being formed; one in the Tri-state area (Connecticut, New York, New Jersey) and one in the Virginia area.

**Convention** – Mark Nye

Mark reported that everything is going well for the convention. Bruce Dooley, a Carnival Glass collector will be presenting the Saturday evening program. Several other programs are being prepared as well. Miami Valley Study Group will be presenting a program about Everglades. Mark will present a program about Nearcut. Ken Filippini will be presenting a program about buying glass in the 21<sup>st</sup> century. It was also announced that Cambridge will be hosting a large community event the same weekend as the convention and reservations for hotel accommodations should be made soon.

**Auction** – Lynn Welker – We are ready.

**Glass Show** – Mary Beth Hackett and Joy McFadden – No report

**Glass Dash** – Larry and Susan Everett

Larry reported that the contracts have gone out. Larry believes that he can accommodate 21 dealers and has space for 71 tables. The hours will be 7:00 to 11:00 a.m.

**Crystal Ball** – Lorraine Weinman – Lorraine needs articles.

**Endowment** – George Stamper

George asked that members remember NCC, Inc. in their estate planning.

**Member Services** – George Stamper

George asked the question: "What can you do for NCC, Inc.?" He also announced that volunteers are needed for Saturday, March 10 to help move plate-glass shelving to the museum.

**Grants and Fundraising** – Sharon Miller

Sharon reported that the campaign is under way to secure showcase donations. There will be approximately 40–41 showcases available for naming at \$1,000 per case. At this time, 13 showcase donations have been secured. There are forms available for this purpose and several members have taken forms this weekend. Sharon also reported that all final grant reports have been completed and mailed to the appropriate funding sources as well as a personal thank you letter. There is \$240 remaining unspent from the \$6,000 received.

**Long Range Planning** – Mike Strebler, Les Hansen, Jim Finley

These members have been in contact with Rick Jones and are working on a draft copy of a long-range financial plan for NCC, Inc.

**Old Business** - None

**New Business**

Tarzan Deel, chairman of the Nominating Committee, introduced his committee members Freeman and Jeanie Moore, Mark Nye, and Larry Everett. A slate of nominees for the board was presented. Bill Hagerty, Rick Jones, and Dennis Snyder are running for re-election and Ken Filippini and Larry Everett are seeking election for the first time. Rick opened the floor for nominations. There being none, a motion was made by Ken Rhoads and seconded by Georgia Otten that the nominations be closed. The motion carried. The slate of nominees for the board will be: Larry Everett, Ken Filippini, Bill Hagerty, Rick Jones, and Dennis Snyder.

A motion to adjourn the meeting was made by Mary Jane Humes and seconded by Larry Everett. Motion carried. Following the meeting the members enjoyed Show and Tell with Lynn Welker and the auction preview.

Respectfully submitted,  
Sharon Miller, secretary

**NEW MUSEUM  
"WISH LIST"  
ITEM**

The new NCC Museum is in need of the following item. Is this something that you have and want to donate? Or, do you want to donate money toward the purchase? Needed: 30" Electric Range

Contact Sharon Miller: call (740) 685-6513 after 5:00 p.m. or by email at mbhs\_sm@omeresanet regarding donations.

# NATIONAL STUDY GROUP REPORTS



## Study Group #13 The Miami Valley (Ohio) Study Club

April 10, 2001: The meeting was called to order at 7:00 p.m. by the president, Larry Everett. There were 20 members present. The group welcomed Walt Welder as a new member.

It was moved and seconded to dispense with the reading of the minutes since they had been mailed to each member. There was no treasurer's report.

**OLD BUSINESS:** Anyone wishing to help with moving glass from the old storage building to the new museum can help on Thursday, April 12.

To date, 25 showcases have been sponsored for the new museum. The museum committee is calling for those sponsoring the showcases to remit the money. It was decided to label our showcase "Donated by the Miami Valley Study Group." There is still a need for funds to be donated for items such as files, shelving, or kitchen items. Donations of any amount will be accepted to aid in covering the many items needed for the new museum.

Larry has talked with Phyllis Smith, and she suggested dates of either July 28 or August 4 for the picnic, and December 8 for the Christmas party. There were some conflicts with the picnic dates, so Larry will talk with Phyllis again.

**NEW BUSINESS:** It was moved and seconded to renew the slate of officers for the next year. That slate would be president, Larry Everett; vice president, Ron Hufford; secretary, Diane Gary, and treasurer, Mac Otten.

Thanks to everyone who assisted Phyllis Smith with the washing, packing, and cataloging the items she will have in her auction at the convention.

The next meeting will be at the Rankins on May 8. For the meeting, Larry will review the "Everglades" program that will be presented at convention. If anyone has acquired new pieces of Everglades since the November meeting that could be used, let Larry know. David Rankin and Frank Wollenhaupt will also review the virtual museum.

The curator at the Columbus Museum of Art has contacted the Cambridge Club for pieces of glass to be used in a display of "Glass of Ohio" in the bicentennial year of 2003. The display will feature glass of Heisey, Libby, Tiffin, and Cambridge. The items requested by the curator are the Mardi Gras snail, a mannequin head, and

Pristine table architecture. Since these items are quite rare, it was suggested that a letter be written to the curator suggesting that each club in Ohio could design their own display for the museum. It was also suggested that perhaps the Dayton Art Institute would be interested in a glass display in 2003. Fred Schaefer will contact the Art Institute.

There being no further business, the meeting adjourned at 7:23 p.m.

**SHOW AND TELL:** #7801 hollow stem champagne with Chantilly etch; #1040 3" swan, Style 2; #3650 goblet, cut Meadow Rose; #3776 goblet, cut Maryland; #1066 ivy ball vase with Blossom Time etch; #1402/77 13" footed punch bowl with enamel Hunting scene; #1402/37 12 6-oz punch mugs with red enamel trim; #489 Pristine 1 3/4" round candlestick; #3625 bell with Chantilly etch; #1114 6 1/2" bashful Charlotte flower frog on #3 base in Moonlight Blue; #319 Crystal 9 oz. Georgian tumbler with grape etch; #170 Caprice club in Moonlight Blue; #200 Caprice 10 oz. tumbler in Moonlight Blue; unidentified 4" Rosepoint candlestick; Amber 9 1/2" candlestick; #1595 Amber 9" candlestick; Ivory 9 1/2" vase candlesticks; #68 10" candlestick in Helio; #68 10" candlestick in Ebony with #524 etch; #1044 10" swan, Style 1.

Will Acord presented a very interesting program on collecting via the Internet.

—Respectfully submitted by Diane H. Gary

## Study Group #16 Elegant Glass Collectors

On April 7, 2001, the Elegant Glass Collectors met at the Liberty Bell Depression Glass Club Show at Elverson Fire Hall in Elverson, PA. The March meeting was canceled due to other commitments. Members attending were: Bud and Anna Walker, Yvonne Dufft, Pam Earussi, and John Corl.

A discussion of Museum update was held. News of absentee members, and the upcoming Harrisburg Show. Anna displayed the artificial "chicanery" fruit that she had made for the display at Harrisburg in the booth. In addition to two lighted display cabinets, John usually has one or two tables displaying Cambridge Glass. This spring we will be featuring Nearcut, as well as some colors for spring. Place settings in blue, pink, and possibly others will be seen displayed most attractively.

*(Continued on page 14)*

(STUDY GROUPS—Continued from page 13)

We are looking forward to our new Museum. Harrisburg Show this year is April 26-29, 2001, at the Farm Show Complex, just off I-81 and Cameron Street Exit.

—submitted by Pam Earussi

### **Study Group #16 Elegant Glass Collectors**

On April 26-29, 2001, the Elegant Glass Collectors met at the Eastern National Antiques Show and Sale in Harrisburg, PA. Members attending were: Bud and Anna Walker, John Corl, Charles and Loretta Weeks, Pam Earussi, Bill and Yvonne Dufft. Williard Kolb was a guest of the group.

Our glasscase featured Nearcut and Crown Tuscan as well as Light Emerald, Dianthus/Peachblo. The bowls had flower frogs and floral arrangements, and a separate table was elegantly set with a place setting in Dianthus/Peachblo, Moonlight Blue, and Light Emerald in Decagon luncheon setting, complete with stemware. Many members stopped by the booth. Lynn Welker, Lynne Franks, Carol and Lewis Elford, and Jim and Leora Leasure were set up at the show. A picnic supper at Shupps Grove was enjoyed on Thursday evening. Breakfasts were thoroughly enjoyed at The Arches Restaurant prior to going to the show. Six pairs of Scotties were purchased, and numerous books. We had a great time talking Cambridge Glass.

—submitted by Pam Earussi

### **Study Group #17 The Cambridge Wildflowers**

On Thursday, April 19, 2001, the Wildflowers met at the home of Linda and Bryan Roberts at 7:30 p.m.

Refreshments of wings, a relish tray with dip, and homemade rhubarb/gingerbread upside-down cake were served.

The meeting was called to order by president Linda Roberts at 8:00 p.m. We dispensed with the reading of the minutes. Under Old Business we made a decision about what we will contribute to the new NCC museum. David Ray gave a museum update to the group, as well as informing us about ideas he has as the new Program Director for the November Quarterly Meeting programs.

Under New Business we set our summer meeting schedule. Next month our meeting will be on Wednesday, May 16, at the home of Rose MacConkey. For our June meeting, we will get together at the NCC Convention. In July, we have again been invited to

Phyllis Smith's annual picnic. We will take the month of August off, and meet on Thursday, September 20, at the home of Barbara Wyrick.

Program:

Our theme this time was Cambridge Smoker's Items, and we studied our Show and Tell items and discussed the time periods in which the items were made. Linda passed out some articles Mark Nye had written about Smoker's Items for the Daze. And a spirited discussion ensued about how the matches actually fit into an Azurite Community Match holder, which had a rough bottom. (possibly made for striking?)

Other Show and Tell smoker's items included: an Ebony #386 round ashtray with silver overlay dog; a 1931 World's Fair souvenir ashtray with Roosevelt's dog, Fella, and a green Cambridge ashtray Insert; three #3011 Nude Stem "Statuesque" ashtrays in Emerald Green, Amber, and Royal Blue; a #3011 Nude stem cigarette box and cover in Carmen and one in Crystal; a #607 Intaglio dog figure cigarette box and cover in Peachblo; an Ebon Canoe ashtray; a Pristine #728 five-piece ashtray set in Moonlight Blue with Crystal holder, and a second set in pastel colors of Mocha, Gold Krystol, Larosa, and Willow Blue with Crystal holder; Crystal and Moonlight Blue Caprice triangular ashtrays; a #3011 Nude stem Crystal cigarette holder; an Ebony humidior with silver overlay; a Crystal Caprice shell and Crown Tuscan shell ashtrays; an Ebony cigarette box with gold Lily of the Valley on the cover; an Emerald Green dolphin foot cigarette box with Charleton hand-painted rose design; and the small 3 1/2 inch Moonlight Blue Caprice cigarette box and cover.

Other bring and brag items included: a Peachblo Melon Boy; a Crystal gold-encrusted Blossomtime globe vase; and an Ebony ivy ball with gold-encrusted Blossomtime.

Our next meeting will be Wednesday, May 16, at the home of Rose MacConkey, and our theme will be Cambridge Candlesticks. We would love to have new members, and anyone in the Columbus area who is interested can contact either Linda Roberts at lrobert2@columbus.rr.com or Barbara Wyrick at bwyr@ee.net.

Our meeting adjourned at 10:15 p.m.

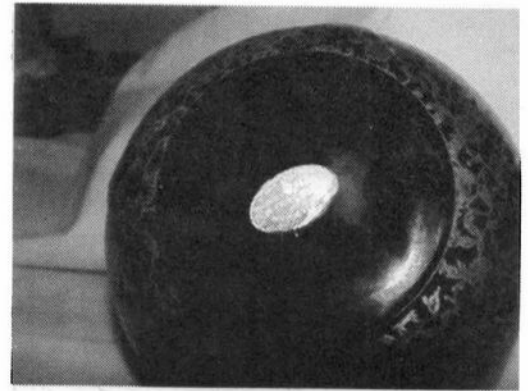
—submitted by Barbara Wyrick, secretary

"Don't hurry, don't worry.  
You're only here for a short  
visit. So be sure to stop and  
smell the flowers."

--Walter Hagen

# *Cambridge Glass with Silver Decoration*

by Bud Walker



When we started collecting Cambridge Glass many years ago, I was attracted to pieces with the silver decorations. Most of them were priced higher than I could afford. At convention time at the Shenandoah, I would talk to Bill Smith and others about the silver pieces. I learned that most if not all of the silver pieces were done by silver companies and not done at the factory. From Lynn Welker, Willard Kolb, and others we began to learn what companies did most of the silver resist commonly known as silver overlay. The company names mentioned were Silver City, Rockwell, and Lotus.

As the years went by and our finances improved, we started purchasing a few of the silver overlay pieces. All of the pieces that were marked would be Silver City or Rockwell and we like many others came to believe that they did most or all of the silver decorations on Cambridge Glass pieces. As it turns out, this assumption was incorrect.

Several months ago I purchased an Ebony ball jug with the silver peacock decoration. When I turned it over I was surprised to find a worn blue label from the decorating company. The label reads: Sterling Silver—Rhodiant Finish—Non Tarnishable—Depasse Pearsall. This is a company I had never even heard of. It almost sounds like a French decorating company. We would have to check with Dr. Fairbrothers who has made a study of silver resist and silver companies and hope he can provide some answers as to this company and where this company was located.

Thanks to Dr. Fairbrothers, we have gained in our knowledge of this little-known silver company. Though the name is French, the company was located in New York City. Depasse Pearsall Silver Company was the successor to Depasse Mfg. Co. which operated between 1915 and 1922. The last time Depasse Pearsall Company was mentioned in the trade papers was prior to 1935. In Dr. Fairbrothers' reply, he states that prior to late 1998 he had no hint that Depasse Pearsall did silver overlay. The non tarnish finish came into use about 1932 which helps date the age of the ball jugs. It would appear that most of the jugs were decorated in the 1933-1934 period as the company was no longer listed by 1935.

Due to a little blue paper label that was never washed off and the extensive knowledge of Dr. Fairbrothers who has spent many years researching the silver companies that did the beautiful silver overlay work, another small piece of history has come to light. We now know who did the lovely peacock decoration on the Cambridge ball jugs.

**WE ARE PLEASED TO ANNOUNCE  
THE ACQUISITION OF THE  
IMPORTANT 40-YEAR CAMBRIDGE  
BLUE CAPRICE COLLECTION OF  
DALE SHEPHERD**

Many pieces are currently on display in  
booths #805 and #812 at Riverfront Antique Mall  
in New Philadelphia, Ohio (Exit 81 off I-77)

Whether you are a collector or admirer of Blue Caprice,  
please stop by and view this wonderful collection.  
Due to the extensive quantity, we are only able to display a fraction of  
Mr. Shepherd's 40-year collection.

SOME OF THE ITEMS AVAILABLE ARE: 34 DIFFERENT GOBLETS,  
VARIOUS CANDELABRUMS WITH BLUE BOBECHE'S ARMS AND  
VASES, DOULTON JUG, BITTERS BOTTLE, TWO-PIECE CAKE SALVER,  
CRACKER JAR, BOTH LADIES' AND GENTLEMEN'S CUSPIDORS,  
COVERED TURKEY CANDY, MOONLIGHT BLUE TWO-KID FROG,  
VASES, PLATES, AND MANY SERVING PIECES.

ALL ARE IN MINT CONDITION.

**WE WILL BE DISPLAYING AT THE NATIONAL CAMBRIDGE  
COLLECTORS FLEA MARKET SATURDAY MORNING, June 23.  
WE LOOK FORWARD TO SEEING YOU THERE!**

**DEBBIE MAGGARD**  
**440-247-5632**  
[debmaggard@worldnet.att.net](mailto:debmaggard@worldnet.att.net)

**LORNE SHIELDS**  
**905-886-6911**  
[vintage-antique@home.com](mailto:vintage-antique@home.com)



# Announcing

# The Cambridge Glass Co.

## The Non-Cataloged Etchings



This long awaited book presents the etchings, found on Cambridge etching plates, that were not illustrated or listed in any of the known Cambridge catalogs, price lists or advertised in trade journals. Thus they are being referred to as the "non-cataloged etchings." This does not imply the etchings shown in this book were never put into commercial production. An unknown number probably were, perhaps for only a short time, and not long enough to appear in a catalog. Many were sample etchings, only put on a few pieces of a single item and never sold commercially.

Some of the etchings in this book are familiar to Cambridge collectors as pieces appear from time to time, indicating they were probably commercially produced. Another group of the etchings included in the book are familiar to the serious Cambridge student since at least one or two examples have been found and in many instances, displayed in the original NCC Museum or in the Bennett Museum. Many are being seen for the first time and altogether, over 230 etchings are illustrated.

Published by National Cambridge Collectors, Inc. and edited by Mark Nye, "The Cambridge Glass Co. The Non-Cataloged Etchings" will go on sale at the NCC Convention later this month and be available for mail orders after July 1. The book is priced at \$12.95. If ordered by mail, the usual shipping and handling charges will apply.

# ~ GLASS ~ MARKETPLACE

**WANTED:** Crystal, 3500, Gadroon with gold stippling (gold icicle trim) on rim. Clarets, champagnes, and/or wines. No etching. **L. Groban (301) 530-6705.**

**FOR SALE:** 3011 NUDE STEMS - Royal Blue blown candy (open), \$400; Green flared comport, \$150; Royal Blue table goblet, \$225; Carmen table goblet, \$225; Amethyst ivy ball, \$150; Amethyst cocktail, \$110; Forest Green cocktail, \$110; Emerald Green cocktail, \$110; Green Caprice #187 35-oz. decanter in Farberware with 6 #188 2-oz. tumblers on Farber tray (scratched), \$450; MUCH Crystal Caprice, Caprice vases, colors, pegged Blue jays, bookends, flower centers, candleholders, arms & nappies, Georgian, torchieres, twist muddlers, Crown Tuscan, Willow etched plates, Wheat Sheaf, Near Cut. Shipping & Insurance extra. **Lenora McNabb 417-329-5008**

## **WE CLEAN CLOUDY GLASS! SATISFACTION GUARANTEED**

*Yes, it is true that we really can restore the interior of your cruet, vase, decanter and other internally etched items back to near original condition.*

*We do not oil, wax or cover up the sickness in any way! We actually remove it.*

*No items are too sick to clean! If we cannot clean an item to meet your satisfaction, the cleaning is FREE!*

*Send no money up front. When we return your item a bill will be enclosed for the postage and cleaning. If you are not satisfied, only the return postage is requested.*

*Most items clean in 7-8 weeks. All glass is handled and cleaned at your risk. Some very cloudy items may take several additional weeks.*

Cocktail Shaker	\$35-\$40.00	Salt Shaker (1)	\$25.00
Cologne	\$30.00	Salt Shaker (2)	\$45.00
Cruet	\$30.00	Vases (under 10")	\$30-\$35.00
Decanter	\$35-\$45.00	Vinegar & Oil	\$30.00
Lavendar Jar	\$25-\$35.00	Water Bottle	\$35-\$40.00

Ship to: Kim Carlisle & Associates  
28220 Lamong Road, Dept. C  
Sheridan, IN 46069  
(317) 758-5767

kcarlisl@indy.net

2001

30<sup>th</sup> Annual  
**HEISEY COLLECTORS  
NATIONAL CONVENTION**  
**June 13 - 16, 2001**

Sponsored by Heisey Collectors of America, Inc.

Featuring:  
**PREMIERE GLASS SHOW**  
**Heisey Glass Display**

*over 40 prominent dealers from across the U.S.*

*Wine & Cheese Preview Wed., June 13, 5 - 8 p.m., \$20  
Thu., June 14 & Fri., June 15, 12 - 5 p.m., \$4  
Sat., June 16, 12 - 5 p.m., free*

OSUN/COTC Campus, Country Club Drive, Newark OH  
30 miles east of Columbus off St. Rt. 16

### **Seminars**

Thur. 2:00 - "Heisey Mustards" by Joe Lokay  
Fri. 2:00 - "Table Talk - Heisey's Magazine To The Trade" by Jay Martin

Other events to include ID breakfast, annual meeting, paperweight making classes, factory tours, swap & blind auction, former Heisey employees reception, banquet, Antiques & Collectibles in the Park flea market

For more info: (740) 345-2932, [www.heiseymuseum.org](http://www.heiseymuseum.org)

*Proceeds benefit the National Heisey Glass Museum*



## **Stems Without Thorns**

As the world's largest supplier of old & new china, crystal, silver and collectibles, Replacements, Ltd. has more than 700 different patterns of Cambridge crystal.

And however much we enjoy selling pieces that were once thought irreplaceable, we love buying them as well. Thanks to people like you, our crystal inventory currently numbers in the hundreds of thousands, and the numbers keep growing every year.

So, if you've been unsuccessfully searching for that elusive piece of Cambridge — or any other type of fine crystal — call us for a free list of pieces available in your pattern. And, if you're looking to sell pieces you currently have, we can help you there, too.

**REPLACEMENTS, LTD.**  
*China, Crystal & Silver • Old & New*

**1-800-REPLACE**  
**(1-800-737-5223)**


1089 Knox Road,  
PO Box 26029, Dept. CB,  
Greensboro, NC 27420  
[www.replacements.com](http://www.replacements.com)

## DEALERS



## DIRECTORY

NOTE: When writing to the dealers listed here, please enclose a SASE!

<p><b>DAUGHERTY'S ANTIQUES</b> Jerry and Shirley</p> <p>Antiques and Collectibles * Mostly Glass</p> <p>Shows &amp; Mail Orders 2515 Cheshire No 402-423-7426 Evenings Lincoln NE</p>	<p><b>BOOTHS #805 AND #812</b> Riverfront Antique Mall New Philadelphia, Ohio (Exit 81 off I-77)</p> <p><b>DEBBIE MAGGARD</b>      <b>LORNE SHIELDS</b> 440-247-5632      905-886-6911 debaggard@worldnet.att.net      vintage-antique@home.com</p>	<p><b>THE JONES GROUP</b> Cindy Jones Buy and Sell Cambridge Glass 650 Riverside Drive Sleepy Hollow, NY 10591 914-631-1656 or E-Mail Caprice0@aol.com</p>
<p><b>Milbra's Crystal</b>      Buy &amp; Sell Replacement and Matching      Specializing in: Cambridge Fostoria Heisey and others</p> <p>Milbra Long (817) 645-6066 Emily Seate (817) 294-9837 PO Box 784, Cleburne, TX 76033 E-mail: longseat@flash.net</p>	<p><b>CRYSTALLINE COLORS</b> Buy, Sell, and Appreciate Cambridge and Other Elegant Glass I Love Cambridge</p> <p>Lynne R. Franks 216-661-7382 Ohio &amp; Western PA Antique Malls</p>	<p><b>Mary Jane's Antiques</b> Mary Jane Humes 2653 Burgener Dr., Decatur, IL 62521 Glass: Cambridge, Fostoria, New Martinsville, Duncan Miller, Imperial and Early Pressed mjhumes@aol.com 217-422-5453</p>
<p><b>THE GLASS URN</b> 456 West Main Street, Suite G Mesa, AZ 85201      480-833-2702 480-838-5936</p> <p>Mail Order      Shows      Open Shop CAMBRIDGE, FOSTORIA, HEISEY, ETC.</p>	<p><b>YOU CAN ADVERTISE YOUR ANTIQUe SHOP HERE!</b></p>	<p><b>GATEWAY ANTIQUE MALL, INC.</b> JUST NW OF MINNEAPOLIS-ST PAUL, MN Next to Super 8 in Rogers, MN (I-94/101 Intersection) 85 Dealers      7 Days, 10-6      612-428-8286 ELAINE STORCK, OWNER/DIRECTOR</p>
<p><b>THE DEGENHART PAPERWEIGHT AND GLASS MUSEUM, INC.</b></p> <p>P O Box 186 Cambridge, Ohio 43725-0186 Intersection of US 22 &amp; I 77 Phone 740-432-2626</p>	<p><b>D &amp; D ANTIQUES</b> Columbus, Ohio</p> <p>Dick Slifko      SHOWS ONLY</p>	<p><b>JAMESTOWN ANTIQUES</b> 16 E. Washington St., Jamestown, OH 45335 Rosepoint and Cambridge our Specialty</p> <p>Buy      (937) 675-6491      Sell Susan and Larry Everett</p>
<p><b>THE GLASS CUPBOARD</b> P O Box 652 West End, North Carolina 27376</p> <p>Marcia Ellis      Cambridge Show 910-673-2884      and Mail Order</p>	<p><b>JUDY'S ANTIQUES</b> Judy Bennett 422 S. Ninth Street (Corner of Jefferson) Cambridge, Ohio 43725 Bus 740-432-5855 Res 740-432-3045 CAMBRIDGE GLASS MY SPECIALTY</p>	<p><b>Horse'n Around Antiques</b> Kelvin and Heather Moore Exit 69 on Interstate 64 Woodlawn, IL 62898 e-mail: hmoore@midwest.net TEL: 618-735-9114 Specializing in Cambridge and other Elegant Glass</p>
<p><b>FINDER'S ANTIQUE HOUSE</b> 3769 Highway 29 North Danville, VA 24540 (804) 836-6782 Cambridge-Heisey-Duncan-Fostoria</p>	<p><b>GREEN ACRES FARM</b> 2678 Hazelton Etna Rd., Pataskala, OH 43062 (State Route 310 North)</p> <p>Sat &amp; Sun 1-7 PM      740-927-1882 Antiques, Crystal Glass and Collectibles</p>	<p><b>CRYSTAL LADY</b> 1817 Vinton St., Omaha, NE 68108</p> <p>Bill, Joann, and Marcie Hagerty Bus. 402-341-0643      Res. 402-391-6730 Specializing in Elegant Glass &amp; Collectibles</p>
<p><b>YOU CAN ADVERTISE YOUR ANTIQUe SHOP HERE!</b></p>	<p><b>YOU CAN ADVERTISE YOUR ANTIQUe SHOP HERE!</b></p>	<p><b>PENNY COURT MALL</b> 637 Wheeling Avenue Cambridge, Ohio 100 Booths      15,000 sq. ft. HOURS: Daily 10-6      Sunday Noon-5 Closed: Easter, Thanksgiving, Christmas Call for Other Holiday Hours      740-432-4369</p>
<p>Mon. thru Sat. 10-5:30 Sunday 12-5:30</p> <p><b>Bogart's Antiques</b> </p> <p>BUY—SELL—APPRAISE—REFINISH CANE &amp; REED CHAIRS—CLOCK REPAIR</p> <p>Jack &amp; Sharon Bogart      St. Rte. 40 740-872-3514 Shop      7527 East Pike 740-826-7439 Home      Norwich, Ohio 43767</p>	<p><b>YOU CAN ADVERTISE YOUR ANTIQUe SHOP HERE!</b></p>	<p><b>MARGARET LANE ANTIQUES</b> 2 E. Main St., New Concord, OH 43762 Lynn Welker      740-826-7414</p> <p>Cambridge Glass Matching Service Hours Mon-Fri 10-12 AM, 1-5 PM or by Appointment</p>
<p><b>ISAACS ANTIQUES</b> (740) 826-4015</p> <p>See our booths in Penny Court Mall in Cambridge and White Pillars Antique Mall at Rt. 40, one mile west of I-70 Norwich Exit #164</p>	<p><b>ALADDIN LAMP BOOKS</b> Free List Figurine Lamps Wanted Bill &amp; Treva Courter</p> <p>3935 Kelley Rd      Keovil, KY 42053 Phone 270-488-2116      FAX 270-488-2055</p>	<p><b>DEXTER CITY ANTIQUE MALL</b> P. O. Box 70, Dexter City, Ohio 45727 (740) 783-5921</p> <p>Located on Ohio St. Rt. 821 Between Exits 16 &amp; 25 off I-77 Just 30 min. South of Cambridge, Ohio</p>

# AUCTION

All Cambridge Glass and Related Items

from the Private Collection of

***Phyllis and (the late) Bill Smith***

**Thursday, June 21, 2001**

**10:00 a.m.**

Doors Will Open at 9:00 a.m.

Pritchard Laughlin Civic Center — In the Galleria  
Glenn Highway (US 40 W at I-70) Cambridge, OH

**FOOD WILL BE AVAILABLE**

Auctioneer: Craig Connelly

Owner: Phyllis Smith

Auction Catalogs will be available—Send 34-cent SASE ((#10 business envelope)  
Phyllis D. Smith, 4003 Old Columbus Road, Springfield, OH 45502-8802  
Phone: (937) 323-3888

National Cambridge Collectors Inc  
PO Box 416  
Cambridge OH 43725-0416

<http://www.cambridgeglass.org>  
e-mail: [NCC\\_CrystalBall@yahoo.com](mailto:NCC_CrystalBall@yahoo.com)

---

FIRST CLASS MAIL  
U.S. POSTAGE  
PAID  
PERMIT NO. 1  
CAMBRIDGE, OH

---

## FIRST CLASS MAIL

*Membership Renewal Notice*

**If the date on your address label is 6-2001,  
this is your LAST ISSUE of the Crystal Ball.**  
Please take a moment and renew now. Thank you!